



Full wwPDB X-ray Structure Validation Report ⓘ

May 13, 2020 – 09:05 pm BST

PDB ID : 4MKC
Title : Crystal Structure of Anaplastic Lymphoma Kinase Complexed with LDK378
Authors : Lee, C.C.; Spraggon, G.
Deposited on : 2013-09-04
Resolution : 2.01 Å(reported)

This is a Full wwPDB X-ray Structure Validation Report for a publicly released PDB entry.

We welcome your comments at validation@mail.wwpdb.org

A user guide is available at

<https://www.wwpdb.org/validation/2017/XrayValidationReportHelp>

with specific help available everywhere you see the ⓘ symbol.

The following versions of software and data (see [references ⓘ](#)) were used in the production of this report:

MolProbity : 4.02b-467
Mogul : 1.8.5 (274361), CSD as541be (2020)
Xtriage (Phenix) : 1.13
EDS : 2.11
buster-report : 1.1.7 (2018)
Percentile statistics : 20191225.v01 (using entries in the PDB archive December 25th 2019)
Refmac : 5.8.0158
CCP4 : 7.0.044 (Gargrove)
Ideal geometry (proteins) : Engh & Huber (2001)
Ideal geometry (DNA, RNA) : Parkinson et al. (1996)
Validation Pipeline (wwPDB-VP) : 2.11

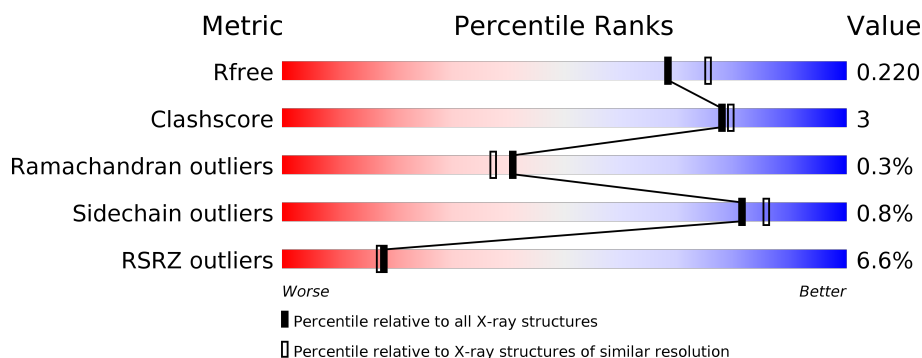
1 Overall quality at a glance

The following experimental techniques were used to determine the structure:

X-RAY DIFFRACTION

The reported resolution of this entry is 2.01 Å.

Percentile scores (ranging between 0-100) for global validation metrics of the entry are shown in the following graphic. The table shows the number of entries on which the scores are based.



Metric	Whole archive (#Entries)	Similar resolution (#Entries, resolution range(Å))
R_{free}	130704	8085 (2.00-2.00)
Clashscore	141614	9178 (2.00-2.00)
Ramachandran outliers	138981	9054 (2.00-2.00)
Sidechain outliers	138945	9053 (2.00-2.00)
RSRZ outliers	127900	7900 (2.00-2.00)

The table below summarises the geometric issues observed across the polymeric chains and their fit to the electron density. The red, orange, yellow and green segments on the lower bar indicate the fraction of residues that contain outliers for ≥ 3 , 2, 1 and 0 types of geometric quality criteria respectively. A grey segment represents the fraction of residues that are not modelled. The numeric value for each fraction is indicated below the corresponding segment, with a dot representing fractions $\leq 5\%$. The upper red bar (where present) indicates the fraction of residues that have poor fit to the electron density. The numeric value is given above the bar.

Mol	Chain	Length	Quality of chain
1	A	367	<div> <div>5%</div> <div> <div></div> <div>77%</div> <div>5%</div> <div>17%</div> </div> </div>

2 Entry composition

There are 4 unique types of molecules in this entry. The entry contains 2631 atoms, of which 0 are hydrogens and 0 are deuteriums.

In the tables below, the ZeroOcc column contains the number of atoms modelled with zero occupancy, the AltConf column contains the number of residues with at least one atom in alternate conformation and the Trace column contains the number of residues modelled with at most 2 atoms.

- Molecule 1 is a protein called ALK tyrosine kinase receptor.

Mol	Chain	Residues	Atoms					ZeroOcc	AltConf	Trace
1	A	303	Total	C	N	O	S	0	6	0
			2406	1536	406	440	24			

There are 29 discrepancies between the modelled and reference sequences:

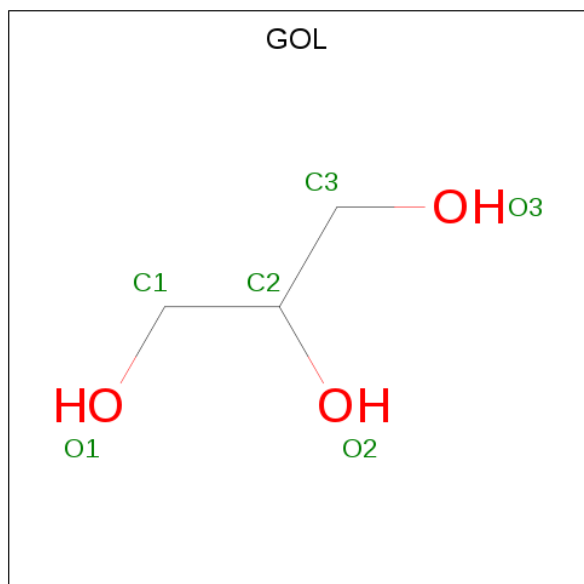
Chain	Residue	Modelled	Actual	Comment	Reference
A	1044	MET	-	EXPRESSION TAG	UNP Q9UM73
A	1045	SER	-	EXPRESSION TAG	UNP Q9UM73
A	1046	TYR	-	EXPRESSION TAG	UNP Q9UM73
A	1047	TYR	-	EXPRESSION TAG	UNP Q9UM73
A	1048	HIS	-	EXPRESSION TAG	UNP Q9UM73
A	1049	HIS	-	EXPRESSION TAG	UNP Q9UM73
A	1050	HIS	-	EXPRESSION TAG	UNP Q9UM73
A	1051	HIS	-	EXPRESSION TAG	UNP Q9UM73
A	1052	HIS	-	EXPRESSION TAG	UNP Q9UM73
A	1053	HIS	-	EXPRESSION TAG	UNP Q9UM73
A	1054	ASP	-	EXPRESSION TAG	UNP Q9UM73
A	1055	TYR	-	EXPRESSION TAG	UNP Q9UM73
A	1056	ASP	-	EXPRESSION TAG	UNP Q9UM73
A	1057	ILE	-	EXPRESSION TAG	UNP Q9UM73
A	1058	PRO	-	EXPRESSION TAG	UNP Q9UM73
A	1059	THR	-	EXPRESSION TAG	UNP Q9UM73
A	1060	THR	-	EXPRESSION TAG	UNP Q9UM73
A	1061	GLU	-	EXPRESSION TAG	UNP Q9UM73
A	1062	ASN	-	EXPRESSION TAG	UNP Q9UM73
A	1063	LEU	-	EXPRESSION TAG	UNP Q9UM73
A	1064	TYR	-	EXPRESSION TAG	UNP Q9UM73
A	1065	PHE	-	EXPRESSION TAG	UNP Q9UM73
A	1066	GLN	-	EXPRESSION TAG	UNP Q9UM73
A	1067	GLY	-	EXPRESSION TAG	UNP Q9UM73
A	1068	ALA	-	EXPRESSION TAG	UNP Q9UM73
A	1069	MET	-	EXPRESSION TAG	UNP Q9UM73
A	1070	GLY	-	EXPRESSION TAG	UNP Q9UM73

Continued on next page...

Continued from previous page...

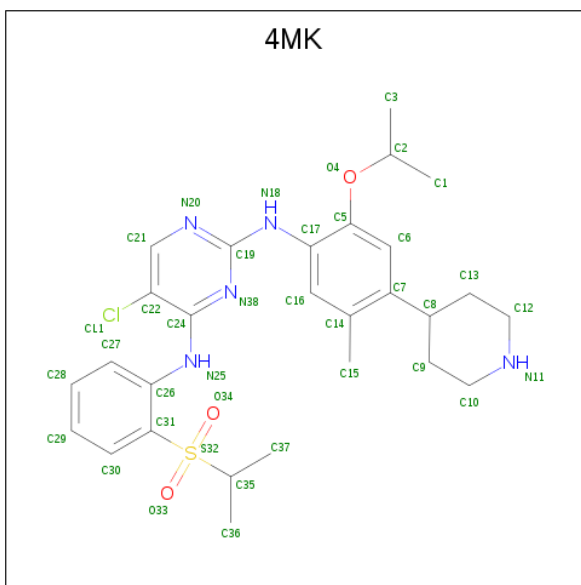
Chain	Residue	Modelled	Actual	Comment	Reference
A	1071	SER	-	EXPRESSION TAG	UNP Q9UM73
A	1281	GLY	SER	ENGINEERED MUTATION	UNP Q9UM73

- Molecule 2 is GLYCEROL (three-letter code: GOL) (formula: $C_3H_8O_3$).



Mol	Chain	Residues	Atoms			ZeroOcc	AltConf
2	A	1	Total	C	O	0	0
			6	3	3		
2	A	1	Total	C	O	0	0
			6	3	3		

- Molecule 3 is 5-chloro-N 2 -[5-methyl-4-(piperidin-4-yl)-2-(propan-2-yloxy)phenyl]-N 4 -[2-(propan-2-ylsulfonyl)phenyl]pyrimidine-2,4-diamine (three-letter code: 4MK) (formula: $C_{28}H_{36}ClN_5O_3S$).



Mol	Chain	Residues	Atoms						ZeroOcc	AltConf
3	A	1	Total	C	Cl	N	O	S	0	0
			38	28	1	5	3	1		

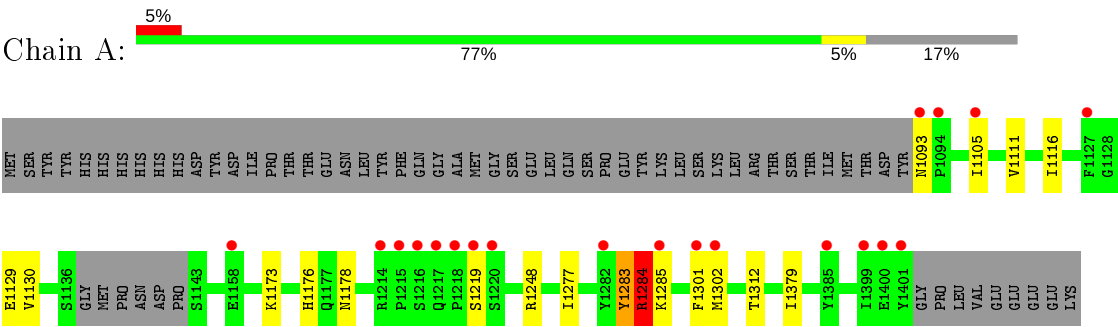
- Molecule 4 is water.

Mol	Chain	Residues	Atoms	ZeroOcc	AltConf
4	A	175	Total O 175 175	0	0

3 Residue-property plots i

These plots are drawn for all protein, RNA and DNA chains in the entry. The first graphic for a chain summarises the proportions of the various outlier classes displayed in the second graphic. The second graphic shows the sequence view annotated by issues in geometry and electron density. Residues are color-coded according to the number of geometric quality criteria for which they contain at least one outlier: green = 0, yellow = 1, orange = 2 and red = 3 or more. A red dot above a residue indicates a poor fit to the electron density ($RSRZ > 2$). Stretches of 2 or more consecutive residues without any outlier are shown as a green connector. Residues present in the sample, but not in the model, are shown in grey.

- Molecule 1: ALK tyrosine kinase receptor



4 Data and refinement statistics

Property	Value	Source
Space group	P 21 21 21	Depositor
Cell constants a, b, c, α , β , γ	51.64Å 57.65Å 105.99Å 90.00° 90.00° 90.00°	Depositor
Resolution (Å)	46.42 – 2.01 46.42 – 2.01	Depositor EDS
% Data completeness (in resolution range)	99.7 (46.42-2.01) 99.9 (46.42-2.01)	Depositor EDS
R_{merge}	(Not available)	Depositor
R_{sym}	0.09	Depositor
$\langle I/\sigma(I) \rangle$ ¹	1.91 (at 2.01Å)	Xtriage
Refinement program	BUSTER 2.11.2	Depositor
R, R_{free}	0.171 , 0.218 0.174 , 0.220	Depositor DCC
R_{free} test set	1108 reflections (5.11%)	wwPDB-VP
Wilson B-factor (Å ²)	30.1	Xtriage
Anisotropy	0.408	Xtriage
Bulk solvent k_{sol} (e/Å ³), B_{sol} (Å ²)	0.35 , 54.5	EDS
L-test for twinning ²	$\langle L \rangle = 0.49$, $\langle L^2 \rangle = 0.33$	Xtriage
Estimated twinning fraction	No twinning to report.	Xtriage
F_o, F_c correlation	0.96	EDS
Total number of atoms	2631	wwPDB-VP
Average B, all atoms (Å ²)	37.0	wwPDB-VP

Xtriage's analysis on translational NCS is as follows: *The largest off-origin peak in the Patterson function is 5.89% of the height of the origin peak. No significant pseudotranslation is detected.*

¹Intensities estimated from amplitudes.

²Theoretical values of $\langle |L| \rangle$, $\langle L^2 \rangle$ for acentric reflections are 0.5, 0.333 respectively for untwinned datasets, and 0.375, 0.2 for perfectly twinned datasets.

5 Model quality [i](#)

5.1 Standard geometry [i](#)

Bond lengths and bond angles in the following residue types are not validated in this section: GOL, 4MK

The Z score for a bond length (or angle) is the number of standard deviations the observed value is removed from the expected value. A bond length (or angle) with $|Z| > 5$ is considered an outlier worth inspection. RMSZ is the root-mean-square of all Z scores of the bond lengths (or angles).

Mol	Chain	Bond lengths		Bond angles	
		RMSZ	$\# Z > 5$	RMSZ	$\# Z > 5$
1	A	0.52	0/2484	0.63	1/3368 (0.0%)

There are no bond length outliers.

All (1) bond angle outliers are listed below:

Mol	Chain	Res	Type	Atoms	Z	Observed($^{\circ}$)	Ideal($^{\circ}$)
1	A	1283	TYR	C-N-CA	5.04	134.30	121.70

There are no chirality outliers.

There are no planarity outliers.

5.2 Too-close contacts [i](#)

In the following table, the Non-H and H(model) columns list the number of non-hydrogen atoms and hydrogen atoms in the chain respectively. The H(added) column lists the number of hydrogen atoms added and optimized by MolProbity. The Clashes column lists the number of clashes within the asymmetric unit, whereas Symm-Clashes lists symmetry related clashes.

Mol	Chain	Non-H	H(model)	H(added)	Clashes	Symm-Clashes
1	A	2406	0	2381	13	0
2	A	12	0	16	0	0
3	A	38	0	36	1	0
4	A	175	0	0	0	0
All	All	2631	0	2433	14	0

The all-atom clashscore is defined as the number of clashes found per 1000 atoms (including hydrogen atoms). The all-atom clashscore for this structure is 3.

All (14) close contacts within the same asymmetric unit are listed below, sorted by their clash

magnitude.

Atom-1	Atom-2	Interatomic distance (Å)	Clash overlap (Å)
1:A:1283:TYR:HA	1:A:1284:ARG:HB2	1.21	1.09
1:A:1283:TYR:CA	1:A:1284:ARG:HB2	2.10	0.74
1:A:1283:TYR:HA	1:A:1284:ARG:CB	2.13	0.63
1:A:1284:ARG:HD3	1:A:1285:LYS:N	2.27	0.49
1:A:1129[B]:GLU:HG3	1:A:1130:VAL:N	2.28	0.49
1:A:1248:ARG:CZ	1:A:1277:ILE:HG21	2.44	0.48
1:A:1312:THR:HG23	1:A:1379:ILE:HD11	1.96	0.47
1:A:1176:HIS:HE1	1:A:1178:ASN:HD22	1.61	0.47
3:A:1503:4MK:N38	3:A:1503:4MK:H27	2.30	0.47
1:A:1301:PHE:HD2	1:A:1302:MET:HE3	1.79	0.46
1:A:1248:ARG:NE	1:A:1277:ILE:HG13	2.31	0.46
1:A:1093:ASN:HD22	1:A:1105:ILE:HG22	1.82	0.45
1:A:1173:LYS:HD2	1:A:1173:LYS:HA	1.83	0.43
1:A:1111:VAL:HG22	1:A:1116:ILE:HD11	2.00	0.42

There are no symmetry-related clashes.

5.3 Torsion angles [i](#)

5.3.1 Protein backbone [i](#)

In the following table, the Percentiles column shows the percent Ramachandran outliers of the chain as a percentile score with respect to all X-ray entries followed by that with respect to entries of similar resolution.

The Analysed column shows the number of residues for which the backbone conformation was analysed, and the total number of residues.

Mol	Chain	Analysed	Favoured	Allowed	Outliers	Percentiles
1	A	305/367 (83%)	296 (97%)	8 (3%)	1 (0%)	41 37

All (1) Ramachandran outliers are listed below:

Mol	Chain	Res	Type
1	A	1284	ARG

5.3.2 Protein sidechains [i](#)

In the following table, the Percentiles column shows the percent sidechain outliers of the chain as a percentile score with respect to all X-ray entries followed by that with respect to entries of similar resolution.

The Analysed column shows the number of residues for which the sidechain conformation was analysed, and the total number of residues.

Mol	Chain	Analysed	Rotameric	Outliers	Percentiles	
1	A	267/322 (83%)	265 (99%)	2 (1%)	84	88

All (2) residues with a non-rotameric sidechain are listed below:

Mol	Chain	Res	Type
1	A	1219	SER
1	A	1284	ARG

Some sidechains can be flipped to improve hydrogen bonding and reduce clashes. All (9) such sidechains are listed below:

Mol	Chain	Res	Type
1	A	1093	ASN
1	A	1124	HIS
1	A	1134	GLN
1	A	1178	ASN
1	A	1243	ASN
1	A	1254	ASN
1	A	1369	GLN
1	A	1388	GLN
1	A	1394	ASN

5.3.3 RNA [i](#)

There are no RNA molecules in this entry.

5.4 Non-standard residues in protein, DNA, RNA chains [i](#)

There are no non-standard protein/DNA/RNA residues in this entry.

5.5 Carbohydrates [i](#)

There are no carbohydrates in this entry.

5.6 Ligand geometry

3 ligands are modelled in this entry.

In the following table, the Counts columns list the number of bonds (or angles) for which Mogul statistics could be retrieved, the number of bonds (or angles) that are observed in the model and the number of bonds (or angles) that are defined in the Chemical Component Dictionary. The Link column lists molecule types, if any, to which the group is linked. The Z score for a bond length (or angle) is the number of standard deviations the observed value is removed from the expected value. A bond length (or angle) with $|Z| > 2$ is considered an outlier worth inspection. RMSZ is the root-mean-square of all Z scores of the bond lengths (or angles).

Mol	Type	Chain	Res	Link	Bond lengths			Bond angles		
					Counts	RMSZ	$\# Z > 2$	Counts	RMSZ	$\# Z > 2$
2	GOL	A	1502	-	5,5,5	0.18	0	5,5,5	0.23	0
2	GOL	A	1501	-	5,5,5	0.07	0	5,5,5	0.11	0
3	4MK	A	1503	-	39,41,41	1.32	5 (12%)	51,59,59	2.01	8 (15%)

In the following table, the Chirals column lists the number of chiral outliers, the number of chiral centers analysed, the number of these observed in the model and the number defined in the Chemical Component Dictionary. Similar counts are reported in the Torsion and Rings columns. '-' means no outliers of that kind were identified.

Mol	Type	Chain	Res	Link	Chirals	Torsions	Rings
2	GOL	A	1502	-	-	2/4/4/4	-
2	GOL	A	1501	-	-	2/4/4/4	-
3	4MK	A	1503	-	-	2/28/36/36	0/4/4/4

All (5) bond length outliers are listed below:

Mol	Chain	Res	Type	Atoms	Z	Observed(Å)	Ideal(Å)
3	A	1503	4MK	C30-C31	2.42	1.42	1.39
3	A	1503	4MK	O34-S32	2.37	1.46	1.44
3	A	1503	4MK	C7-C8	2.30	1.56	1.52
3	A	1503	4MK	O33-S32	2.22	1.46	1.44
3	A	1503	4MK	O4-C5	2.14	1.41	1.37

All (8) bond angle outliers are listed below:

Mol	Chain	Res	Type	Atoms	Z	Observed(°)	Ideal(°)
3	A	1503	4MK	N20-C19-N38	-7.97	119.00	126.55
3	A	1503	4MK	O34-S32-O33	-5.67	113.51	118.71
3	A	1503	4MK	C22-C21-N20	-3.75	119.62	122.84
3	A	1503	4MK	C19-N38-C24	3.67	124.79	116.39

Continued on next page...

Continued from previous page...

Mol	Chain	Res	Type	Atoms	Z	Observed(°)	Ideal(°)
3	A	1503	4MK	O34-S32-C35	3.60	110.39	107.97
3	A	1503	4MK	C5-O4-C2	3.44	126.17	119.53
3	A	1503	4MK	C21-N20-C19	2.95	120.33	115.88
3	A	1503	4MK	C12-N11-C10	2.34	117.06	110.34

There are no chirality outliers.

All (6) torsion outliers are listed below:

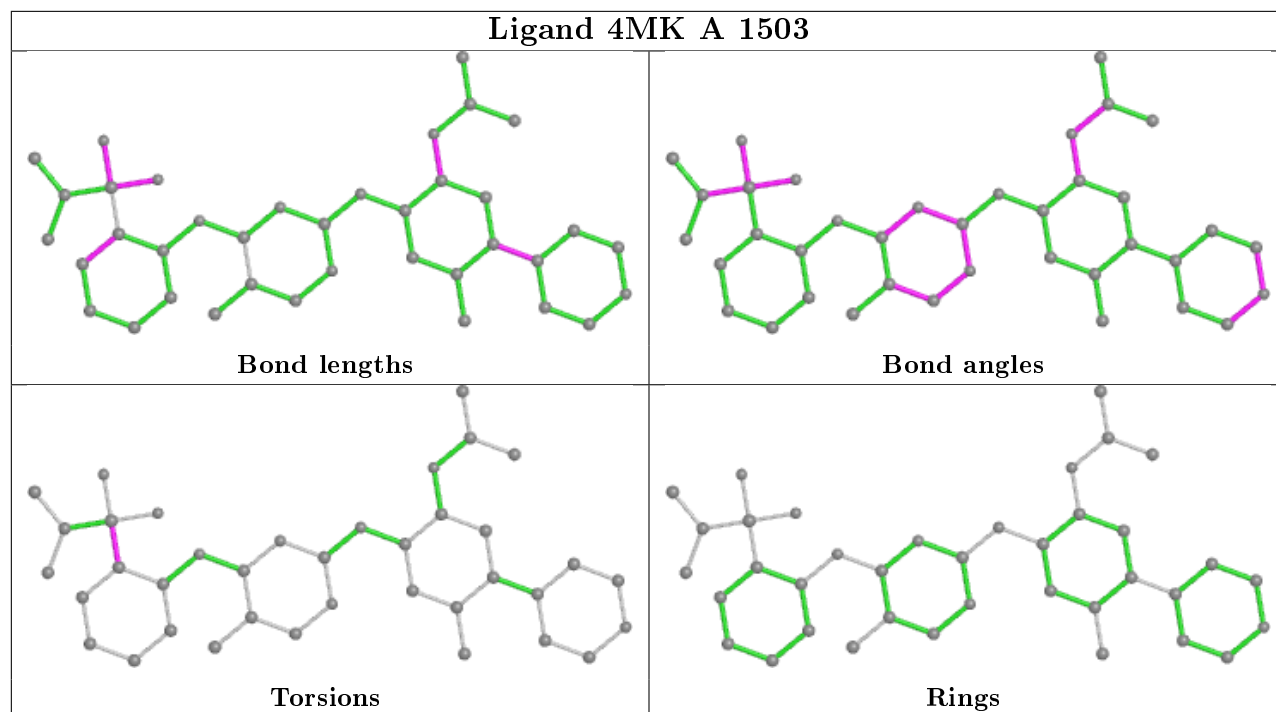
Mol	Chain	Res	Type	Atoms
2	A	1501	GOL	O1-C1-C2-O2
2	A	1502	GOL	O1-C1-C2-C3
2	A	1501	GOL	O1-C1-C2-C3
2	A	1502	GOL	O1-C1-C2-O2
3	A	1503	4MK	C30-C31-S32-O34
3	A	1503	4MK	C26-C31-S32-O34

There are no ring outliers.

1 monomer is involved in 1 short contact:

Mol	Chain	Res	Type	Clashes	Symm-Clashes
3	A	1503	4MK	1	0

The following is a two-dimensional graphical depiction of Mogul quality analysis of bond lengths, bond angles, torsion angles, and ring geometry for all instances of the Ligand of Interest. In addition, ligands with molecular weight > 250 and outliers as shown on the validation Tables will also be included. For torsion angles, if less than 5% of the Mogul distribution of torsion angles is within 10 degrees of the torsion angle in question, then that torsion angle is considered an outlier. Any bond that is central to one or more torsion angles identified as an outlier by Mogul will be highlighted in the graph. For rings, the root-mean-square deviation (RMSD) between the ring in question and similar rings identified by Mogul is calculated over all ring torsion angles. If the average RMSD is greater than 60 degrees and the minimal RMSD between the ring in question and any Mogul-identified rings is also greater than 60 degrees, then that ring is considered an outlier. The outliers are highlighted in purple. The color gray indicates Mogul did not find sufficient equivalents in the CSD to analyse the geometry.



5.7 Other polymers [i](#)

There are no such residues in this entry.

5.8 Polymer linkage issues [i](#)

There are no chain breaks in this entry.

6 Fit of model and data [i](#)

6.1 Protein, DNA and RNA chains [i](#)

In the following table, the column labelled ‘#RSRZ> 2’ contains the number (and percentage) of RSRZ outliers, followed by percent RSRZ outliers for the chain as percentile scores relative to all X-ray entries and entries of similar resolution. The OWAB column contains the minimum, median, 95th percentile and maximum values of the occupancy-weighted average B-factor per residue. The column labelled ‘Q< 0.9’ lists the number of (and percentage) of residues with an average occupancy less than 0.9.

Mol	Chain	Analysed	<RSRZ>	#RSRZ>2	OWAB(Å ²)	Q<0.9
1	A	303/367 (82%)	-0.02	20 (6%) 18 17	18, 33, 68, 92	0

All (20) RSRZ outliers are listed below:

Mol	Chain	Res	Type	RSRZ
1	A	1216	SER	8.3
1	A	1401	TYR	6.4
1	A	1094	PRO	5.5
1	A	1218	PRO	5.4
1	A	1217	GLN	4.0
1	A	1215	PRO	3.8
1	A	1093	ASN	3.5
1	A	1127	PHE	3.4
1	A	1399	ILE	3.4
1	A	1214	ARG	3.0
1	A	1282	TYR	2.8
1	A	1400	GLU	2.7
1	A	1105	ILE	2.6
1	A	1385	TYR	2.5
1	A	1220	SER	2.4
1	A	1219	SER	2.3
1	A	1285	LYS	2.2
1	A	1301	PHE	2.2
1	A	1302	MET	2.2
1	A	1158	GLU	2.1

6.2 Non-standard residues in protein, DNA, RNA chains [i](#)

There are no non-standard protein/DNA/RNA residues in this entry.

6.3 Carbohydrates [i](#)

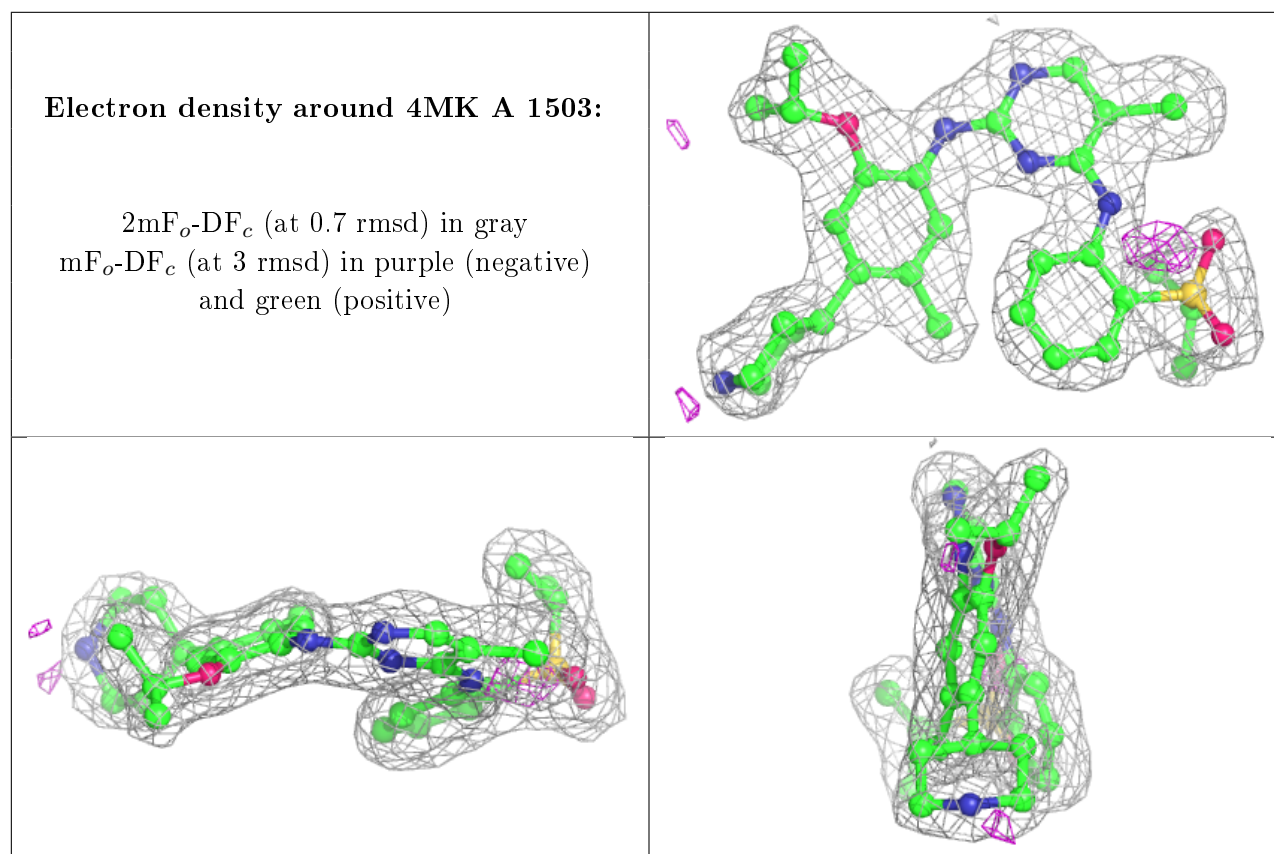
There are no carbohydrates in this entry.

6.4 Ligands [i](#)

In the following table, the Atoms column lists the number of modelled atoms in the group and the number defined in the chemical component dictionary. The B-factors column lists the minimum, median, 95th percentile and maximum values of B factors of atoms in the group. The column labelled 'Q< 0.9' lists the number of atoms with occupancy less than 0.9.

Mol	Type	Chain	Res	Atoms	RSCC	RSR	B-factors(\AA^2)	Q<0.9
2	GOL	A	1501	6/6	0.73	0.28	53,56,60,64	0
2	GOL	A	1502	6/6	0.87	0.21	35,42,48,55	0
3	4MK	A	1503	38/38	0.96	0.10	24,29,38,38	0

The following is a graphical depiction of the model fit to experimental electron density of all instances of the Ligand of Interest. In addition, ligands with molecular weight > 250 and outliers as shown on the geometry validation Tables will also be included. Each fit is shown from different orientation to approximate a three-dimensional view.



6.5 Other polymers

There are no such residues in this entry.