



# Full wwPDB X-ray Structure Validation Report ⓘ

May 13, 2020 – 01:57 am BST

PDB ID : 5MMR  
Title : Crystal Structure of CK2alpha with N-((2-chloro-[1,1'-biphenyl]-4-yl)methyl)butane-1,4-diamine bound  
Authors : Brear, P.; De Fusco, C.; Georgiou, K.; Iegre, J.; Sore, H.; Hyvonen, M.; Spring, D.  
Deposited on : 2016-12-12  
Resolution : 2.00 Å(reported)

This is a Full wwPDB X-ray Structure Validation Report for a publicly released PDB entry.

We welcome your comments at [validation@mail.wwpdb.org](mailto:validation@mail.wwpdb.org)

A user guide is available at

<https://www.wwpdb.org/validation/2017/XrayValidationReportHelp>

with specific help available everywhere you see the ⓘ symbol.

---

The following versions of software and data (see [references ⓘ](#)) were used in the production of this report:

MolProbity : 4.02b-467  
Mogul : 1.8.5 (274361), CSD as541be (2020)  
Xtriage (Phenix) : 1.13  
EDS : 2.11  
buster-report : 1.1.7 (2018)  
Percentile statistics : 20191225.v01 (using entries in the PDB archive December 25th 2019)  
Refmac : 5.8.0158  
CCP4 : 7.0.044 (Gargrove)  
Ideal geometry (proteins) : Engh & Huber (2001)  
Ideal geometry (DNA, RNA) : Parkinson et al. (1996)  
Validation Pipeline (wwPDB-VP) : 2.11

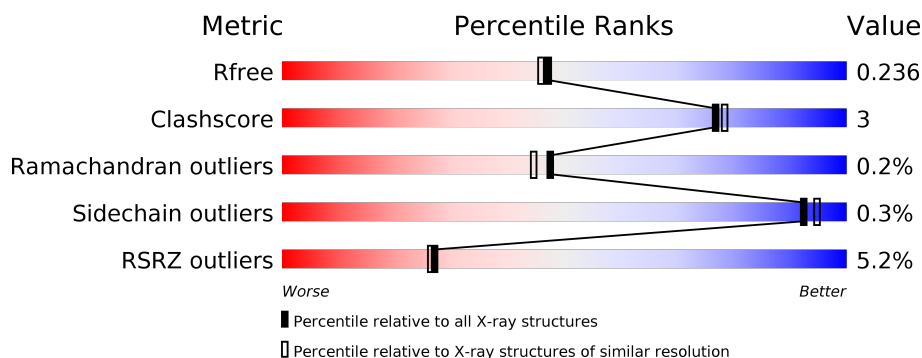
# 1 Overall quality at a glance

The following experimental techniques were used to determine the structure:

## *X-RAY DIFFRACTION*

The reported resolution of this entry is 2.00 Å.

Percentile scores (ranging between 0-100) for global validation metrics of the entry are shown in the following graphic. The table shows the number of entries on which the scores are based.



Metric	Whole archive (#Entries)	Similar resolution (#Entries, resolution range(Å))
$R_{free}$	130704	8085 (2.00-2.00)
Clashscore	141614	9178 (2.00-2.00)
Ramachandran outliers	138981	9054 (2.00-2.00)
Sidechain outliers	138945	9053 (2.00-2.00)
RSRZ outliers	127900	7900 (2.00-2.00)

The table below summarises the geometric issues observed across the polymeric chains and their fit to the electron density. The red, orange, yellow and green segments on the lower bar indicate the fraction of residues that contain outliers for  $\geq 3$ , 2, 1 and 0 types of geometric quality criteria respectively. A grey segment represents the fraction of residues that are not modelled. The numeric value for each fraction is indicated below the corresponding segment, with a dot representing fractions  $\leq 5\%$ . The upper red bar (where present) indicates the fraction of residues that have poor fit to the electron density. The numeric value is given above the bar.

Mol	Chain	Length	Quality of chain
1	A	352	<div> <div>3%</div> <div> <div></div> <div>85%</div> <div>8%</div> <div>7%</div> </div> </div>
1	B	352	<div> <div>7%</div> <div> <div></div> <div>85%</div> <div>7%</div> <div>8%</div> </div> </div>

## 2 Entry composition [i](#)

There are 5 unique types of molecules in this entry. The entry contains 5915 atoms, of which 0 are hydrogens and 0 are deuteriums.

In the tables below, the ZeroOcc column contains the number of atoms modelled with zero occupancy, the AltConf column contains the number of residues with at least one atom in alternate conformation and the Trace column contains the number of residues modelled with at most 2 atoms.

- Molecule 1 is a protein called Casein kinase II subunit alpha.

Mol	Chain	Residues	Atoms					ZeroOcc	AltConf	Trace
1	A	326	Total	C	N	O	S	0	4	0
			2778	1781	485	500	12			
1	B	325	Total	C	N	O	S	0	4	0
			2774	1777	488	498	11			

There are 50 discrepancies between the modelled and reference sequences:

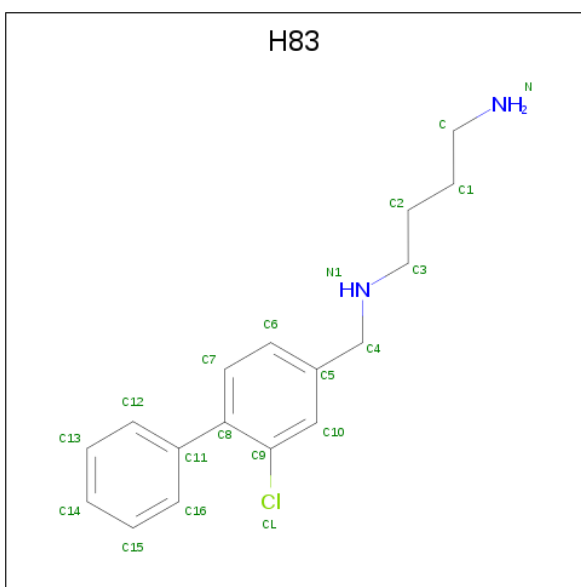
Chain	Residue	Modelled	Actual	Comment	Reference
A	-22	GLY	-	expression tag	UNP P68400
A	-21	SER	-	expression tag	UNP P68400
A	-20	MET	-	expression tag	UNP P68400
A	-19	ASP	-	expression tag	UNP P68400
A	-18	ILE	-	expression tag	UNP P68400
A	-17	GLU	-	expression tag	UNP P68400
A	-16	PHE	-	expression tag	UNP P68400
A	-15	ASP	-	expression tag	UNP P68400
A	-14	ASP	-	expression tag	UNP P68400
A	-13	ASP	-	expression tag	UNP P68400
A	-12	ALA	-	expression tag	UNP P68400
A	-11	ASP	-	expression tag	UNP P68400
A	-10	ASP	-	expression tag	UNP P68400
A	-9	ASP	-	expression tag	UNP P68400
A	-8	GLY	-	expression tag	UNP P68400
A	-7	SER	-	expression tag	UNP P68400
A	-6	GLY	-	expression tag	UNP P68400
A	-5	SER	-	expression tag	UNP P68400
A	-4	GLY	-	expression tag	UNP P68400
A	-3	SER	-	expression tag	UNP P68400
A	-2	GLY	-	expression tag	UNP P68400
A	-1	SER	-	expression tag	UNP P68400
A	0	GLY	-	expression tag	UNP P68400
A	1	SER	-	expression tag	UNP P68400
A	21	SER	ARG	engineered mutation	UNP P68400

*Continued on next page...*

*Continued from previous page...*

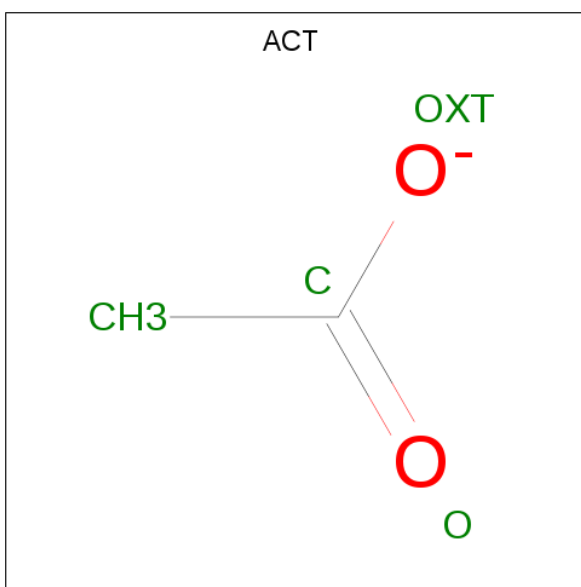
Chain	Residue	Modelled	Actual	Comment	Reference
B	-22	GLY	-	expression tag	UNP P68400
B	-21	SER	-	expression tag	UNP P68400
B	-20	MET	-	expression tag	UNP P68400
B	-19	ASP	-	expression tag	UNP P68400
B	-18	ILE	-	expression tag	UNP P68400
B	-17	GLU	-	expression tag	UNP P68400
B	-16	PHE	-	expression tag	UNP P68400
B	-15	ASP	-	expression tag	UNP P68400
B	-14	ASP	-	expression tag	UNP P68400
B	-13	ASP	-	expression tag	UNP P68400
B	-12	ALA	-	expression tag	UNP P68400
B	-11	ASP	-	expression tag	UNP P68400
B	-10	ASP	-	expression tag	UNP P68400
B	-9	ASP	-	expression tag	UNP P68400
B	-8	GLY	-	expression tag	UNP P68400
B	-7	SER	-	expression tag	UNP P68400
B	-6	GLY	-	expression tag	UNP P68400
B	-5	SER	-	expression tag	UNP P68400
B	-4	GLY	-	expression tag	UNP P68400
B	-3	SER	-	expression tag	UNP P68400
B	-2	GLY	-	expression tag	UNP P68400
B	-1	SER	-	expression tag	UNP P68400
B	0	GLY	-	expression tag	UNP P68400
B	1	SER	-	expression tag	UNP P68400
B	21	SER	ARG	engineered mutation	UNP P68400

- Molecule 2 is {N}'-[(3-chloranyl-4-phenyl-phenyl)methyl]butane-1,4-diamine (three-letter code: H83) (formula: C<sub>17</sub>H<sub>21</sub>ClN<sub>2</sub>).



Mol	Chain	Residues	Atoms				ZeroOcc	AltConf
2	A	1	Total	C	Cl	N	0	0
			20	17	1	2		
2	A	1	Total	C	Cl	N	0	0
			20	17	1	2		
2	B	1	Total	C	Cl	N	0	0
			20	17	1	2		

- Molecule 3 is ACETATE ION (three-letter code: ACT) (formula: C<sub>2</sub>H<sub>3</sub>O<sub>2</sub>).



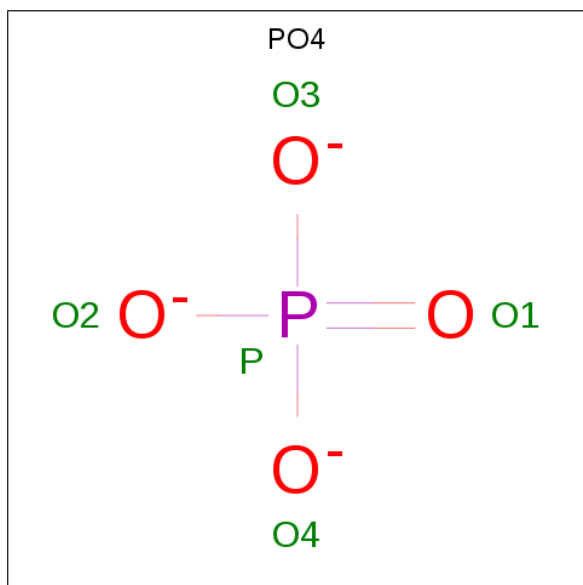
Mol	Chain	Residues	Atoms			ZeroOcc	AltConf
3	A	1	Total	C	O	0	0
			4	2	2		

*Continued on next page...*

Continued from previous page...

Mol	Chain	Residues	Atoms			ZeroOcc	AltConf
3	A	1	Total	C	O	0	0
			4	2	2		
3	A	1	Total	C	O	0	0
			4	2	2		
3	A	1	Total	C	O	0	0
			4	2	2		

- Molecule 4 is PHOSPHATE ION (three-letter code: PO4) (formula: O<sub>4</sub>P).



Mol	Chain	Residues	Atoms			ZeroOcc	AltConf
4	B	1	Total	O	P	0	0
			5	4	1		

- Molecule 5 is water.

Mol	Chain	Residues	Atoms		ZeroOcc	AltConf
5	A	191	Total	O	0	0
			191	191		
5	B	91	Total	O	0	0
			91	91		



## 4 Data and refinement statistics

Property	Value	Source
Space group	C 2 2 21	Depositor
Cell constants a, b, c, $\alpha$ , $\beta$ , $\gamma$	64.36 Å 67.72 Å 334.76 Å 90.00° 90.00° 90.00°	Depositor
Resolution (Å)	46.65 – 2.00 46.65 – 2.00	Depositor EDS
% Data completeness (in resolution range)	98.9 (46.65-2.00) 99.0 (46.65-2.00)	Depositor EDS
$R_{merge}$	0.15	Depositor
$R_{sym}$	0.15	Depositor
$\langle I/\sigma(I) \rangle$ <sup>1</sup>	2.44 (at 2.00 Å)	Xtriage
Refinement program	BUSTER	Depositor
R, $R_{free}$	0.196 , 0.226 0.206 , 0.236	Depositor DCC
$R_{free}$ test set	2553 reflections (5.11%)	wwPDB-VP
Wilson B-factor (Å <sup>2</sup> )	26.5	Xtriage
Anisotropy	0.677	Xtriage
Bulk solvent $k_{sol}$ (e/Å <sup>3</sup> ), $B_{sol}$ (Å <sup>2</sup> )	0.35 , 53.9	EDS
L-test for twinning <sup>2</sup>	$\langle  L  \rangle = 0.47$ , $\langle L^2 \rangle = 0.30$	Xtriage
Estimated twinning fraction	0.097 for -k,-h,-l	Xtriage
$F_o, F_c$ correlation	0.94	EDS
Total number of atoms	5915	wwPDB-VP
Average B, all atoms (Å <sup>2</sup> )	38.0	wwPDB-VP

Xtriage's analysis on translational NCS is as follows: *The largest off-origin peak in the Patterson function is 6.33% of the height of the origin peak. No significant pseudotranslation is detected.*

<sup>1</sup>Intensities estimated from amplitudes.

<sup>2</sup>Theoretical values of  $\langle |L| \rangle$ ,  $\langle L^2 \rangle$  for acentric reflections are 0.5, 0.333 respectively for untwinned datasets, and 0.375, 0.2 for perfectly twinned datasets.



## 5 Model quality [i](#)

### 5.1 Standard geometry [i](#)

Bond lengths and bond angles in the following residue types are not validated in this section: H83, PO4, ACT

The Z score for a bond length (or angle) is the number of standard deviations the observed value is removed from the expected value. A bond length (or angle) with  $|Z| > 5$  is considered an outlier worth inspection. RMSZ is the root-mean-square of all Z scores of the bond lengths (or angles).

Mol	Chain	Bond lengths		Bond angles	
		RMSZ	$\# Z  > 5$	RMSZ	$\# Z  > 5$
1	A	0.54	0/2853	0.62	0/3860
1	B	0.48	0/2853	0.64	2/3860 (0.1%)
All	All	0.51	0/5706	0.63	2/7720 (0.0%)

Chiral center outliers are detected by calculating the chiral volume of a chiral center and verifying if the center is modelled as a planar moiety or with the opposite hand. A planarity outlier is detected by checking planarity of atoms in a peptide group, atoms in a mainchain group or atoms of a sidechain that are expected to be planar.

Mol	Chain	#Chirality outliers	#Planarity outliers
1	B	0	1

There are no bond length outliers.

All (2) bond angle outliers are listed below:

Mol	Chain	Res	Type	Atoms	Z	Observed( $^{\circ}$ )	Ideal( $^{\circ}$ )
1	B	19[A]	ARG	NE-CZ-NH2	-6.08	117.26	120.30
1	B	19[B]	ARG	NE-CZ-NH2	-6.08	117.26	120.30

There are no chirality outliers.

All (1) planarity outliers are listed below:

Mol	Chain	Res	Type	Group
1	B	19[A]	ARG	Sidechain

### 5.2 Too-close contacts [i](#)

In the following table, the Non-H and H(model) columns list the number of non-hydrogen atoms and hydrogen atoms in the chain respectively. The H(added) column lists the number of hydrogen

atoms added and optimized by MolProbity. The Clashes column lists the number of clashes within the asymmetric unit, whereas Symm-Clashes lists symmetry related clashes.

Mol	Chain	Non-H	H(model)	H(added)	Clashes	Symm-Clashes
1	A	2778	0	2716	21	0
1	B	2774	0	2711	12	6
2	A	40	0	0	3	0
2	B	20	0	0	0	0
3	A	16	0	12	0	0
4	B	5	0	0	0	0
5	A	191	0	0	4	2
5	B	91	0	0	1	0
All	All	5915	0	5439	33	8

The all-atom clashscore is defined as the number of clashes found per 1000 atoms (including hydrogen atoms). The all-atom clashscore for this structure is 3.

All (33) close contacts within the same asymmetric unit are listed below, sorted by their clash magnitude.

Atom-1	Atom-2	Interatomic distance (Å)	Clash overlap (Å)
1:A:225[B]:MET:HG3	2:A:401:H83:C15	2.08	0.82
1:A:225[A]:MET:HG3	2:A:401:H83:C15	2.14	0.76
1:A:237:ASP:OD2	5:A:501:HOH:O	2.04	0.74
1:B:70:LEU:HD13	1:B:78:ILE:HD12	1.83	0.59
1:A:20:PRO:HG2	1:B:105:VAL:HG11	1.87	0.57
1:A:236:HIS:HE1	5:A:564:HOH:O	1.88	0.56
1:A:118:ASN:HD22	1:A:164:ILE:H	1.54	0.55
1:A:236:HIS:CE1	5:A:564:HOH:O	2.64	0.50
1:A:33:TRP:CZ3	1:A:100:ILE:HG22	2.47	0.49
1:A:5:VAL:HB	1:A:261:TYR:HA	1.96	0.48
1:B:33:TRP:CZ3	1:B:100:ILE:HG22	2.49	0.47
1:B:17:THR:HG22	5:B:534:HOH:O	2.13	0.47
1:A:72:PRO:HA	1:A:78:ILE:HD11	1.96	0.47
1:B:5:VAL:HB	1:B:261:TYR:HA	1.96	0.46
1:A:33:TRP:HZ3	1:A:100:ILE:HG22	1.81	0.45
1:A:134:ARG:HG2	1:A:323:TYR:CZ	2.52	0.45
1:B:33:TRP:HZ3	1:B:100:ILE:HG22	1.81	0.45
1:A:91:GLY:HA3	1:A:146:TYR:CE2	2.53	0.44
1:A:221:MET:HB2	1:A:221:MET:HE2	1.89	0.44
1:A:165:ASP:HB3	1:A:170:LYS:HB3	2.00	0.43
1:A:280:ARG:HB3	1:A:282:GLU:HG2	2.01	0.43
1:A:278:ARG:HD2	5:A:651:HOH:O	2.19	0.43
1:B:73:VAL:O	1:B:74:LYS:HD3	2.18	0.43

*Continued on next page...*

Continued from previous page...

Atom-1	Atom-2	Interatomic distance (Å)	Clash overlap (Å)
1:A:285:VAL:HG22	1:A:293:VAL:HG11	2.00	0.42
1:B:91:GLY:HA3	1:B:146:TYR:CE2	2.55	0.42
1:B:74:LYS:HB2	1:B:77:LYS:HD2	2.02	0.42
2:A:401:H83:C16	2:A:401:H83:CL	3.04	0.42
1:A:140:ILE:HD13	1:A:221:MET:HE1	2.02	0.42
1:B:293:VAL:HG13	1:B:298:LEU:HD21	2.02	0.41
1:A:125:TYR:CE1	1:A:225[B]:MET:CE	3.03	0.41
1:A:114:GLU:HG3	1:A:114:GLU:O	2.19	0.41
1:B:223:ALA:HB2	1:B:301:LEU:HD11	2.01	0.41
1:B:280:ARG:HB3	1:B:282:GLU:HG2	2.04	0.40

All (8) symmetry-related close contacts are listed below. The label for Atom-2 includes the symmetry operator and encoded unit-cell translations to be applied.

Atom-1	Atom-2	Interatomic distance (Å)	Clash overlap (Å)
1:B:268:ARG:NE	1:B:268:ARG:NH2[3_557]	1.64	0.56
1:B:268:ARG:NH2	1:B:268:ARG:NH2[3_557]	1.74	0.46
1:B:268:ARG:CZ	1:B:268:ARG:CZ[3_557]	1.75	0.45
1:B:268:ARG:NE	1:B:268:ARG:CZ[3_557]	1.86	0.34
1:B:268:ARG:CZ	1:B:268:ARG:NH2[3_557]	1.88	0.32
5:A:564:HOH:O	5:A:657:HOH:O[4_597]	2.03	0.17
5:A:501:HOH:O	5:A:501:HOH:O[4_597]	2.03	0.17
1:B:73:VAL:CG2	1:B:325:TYR:O[5_545]	2.09	0.11

## 5.3 Torsion angles [i](#)

### 5.3.1 Protein backbone [i](#)

In the following table, the Percentiles column shows the percent Ramachandran outliers of the chain as a percentile score with respect to all X-ray entries followed by that with respect to entries of similar resolution.

The Analysed column shows the number of residues for which the backbone conformation was analysed, and the total number of residues.

Mol	Chain	Analysed	Favoured	Allowed	Outliers	Percentiles	
1	A	328/352 (93%)	322 (98%)	6 (2%)	0	100	100
1	B	327/352 (93%)	316 (97%)	10 (3%)	1 (0%)	41	37
All	All	655/704 (93%)	638 (97%)	16 (2%)	1 (0%)	47	44

All (1) Ramachandran outliers are listed below:

Mol	Chain	Res	Type
1	B	72	PRO

### 5.3.2 Protein sidechains [i](#)

In the following table, the Percentiles column shows the percent sidechain outliers of the chain as a percentile score with respect to all X-ray entries followed by that with respect to entries of similar resolution.

The Analysed column shows the number of residues for which the sidechain conformation was analysed, and the total number of residues.

Mol	Chain	Analysed	Rotameric	Outliers	Percentiles	
1	A	304/319 (95%)	304 (100%)	0	100	100
1	B	303/319 (95%)	301 (99%)	2 (1%)	84	88
All	All	607/638 (95%)	605 (100%)	2 (0%)	92	95

All (2) residues with a non-rotameric sidechain are listed below:

Mol	Chain	Res	Type
1	B	21	SER
1	B	224	SER

Some sidechains can be flipped to improve hydrogen bonding and reduce clashes. All (8) such sidechains are listed below:

Mol	Chain	Res	Type
1	A	118	ASN
1	A	186	GLN
1	A	236	HIS
1	A	262	ASN
1	A	270	ASN
1	A	286	HIS
1	B	262	ASN
1	B	270	ASN

### 5.3.3 RNA [i](#)

There are no RNA molecules in this entry.

## 5.4 Non-standard residues in protein, DNA, RNA chains [i](#)

There are no non-standard protein/DNA/RNA residues in this entry.

## 5.5 Carbohydrates [i](#)

There are no carbohydrates in this entry.

## 5.6 Ligand geometry [i](#)

8 ligands are modelled in this entry.

In the following table, the Counts columns list the number of bonds (or angles) for which Mogul statistics could be retrieved, the number of bonds (or angles) that are observed in the model and the number of bonds (or angles) that are defined in the Chemical Component Dictionary. The Link column lists molecule types, if any, to which the group is linked. The Z score for a bond length (or angle) is the number of standard deviations the observed value is removed from the expected value. A bond length (or angle) with  $|Z| > 2$  is considered an outlier worth inspection. RMSZ is the root-mean-square of all Z scores of the bond lengths (or angles).

Mol	Type	Chain	Res	Link	Bond lengths			Bond angles		
					Counts	RMSZ	# Z  > 2	Counts	RMSZ	# Z  > 2
3	ACT	A	406	-	1,3,3	3.68	1 (100%)	0,3,3	0.00	-
2	H83	A	401	-	21,21,21	0.11	0	26,26,26	0.19	0
4	PO4	B	402	-	4,4,4	2.50	1 (25%)	6,6,6	0.70	0
3	ACT	A	405	-	1,3,3	4.75	1 (100%)	0,3,3	0.00	-
2	H83	B	401	-	21,21,21	0.21	0	26,26,26	0.24	0
2	H83	A	402	-	21,21,21	0.22	0	26,26,26	0.24	0
3	ACT	A	404	-	1,3,3	3.49	1 (100%)	0,3,3	0.00	-
3	ACT	A	403	-	1,3,3	6.93	1 (100%)	0,3,3	0.00	-

In the following table, the Chirals column lists the number of chiral outliers, the number of chiral centers analysed, the number of these observed in the model and the number defined in the Chemical Component Dictionary. Similar counts are reported in the Torsion and Rings columns. '-' means no outliers of that kind were identified.

Mol	Type	Chain	Res	Link	Chirals	Torsions	Rings
2	H83	A	401	-	-	2/11/11/11	0/2/2/2
2	H83	B	401	-	-	1/11/11/11	0/2/2/2
2	H83	A	402	-	-	3/11/11/11	0/2/2/2

All (5) bond length outliers are listed below:

Mol	Chain	Res	Type	Atoms	Z	Observed(Å)	Ideal(Å)
3	A	403	ACT	CH3-C	6.93	1.57	1.48
3	A	405	ACT	CH3-C	4.75	1.54	1.48
4	B	402	PO4	P-O1	4.15	1.60	1.50
3	A	406	ACT	CH3-C	3.68	1.53	1.48
3	A	404	ACT	CH3-C	3.49	1.53	1.48

There are no bond angle outliers.

There are no chirality outliers.

All (6) torsion outliers are listed below:

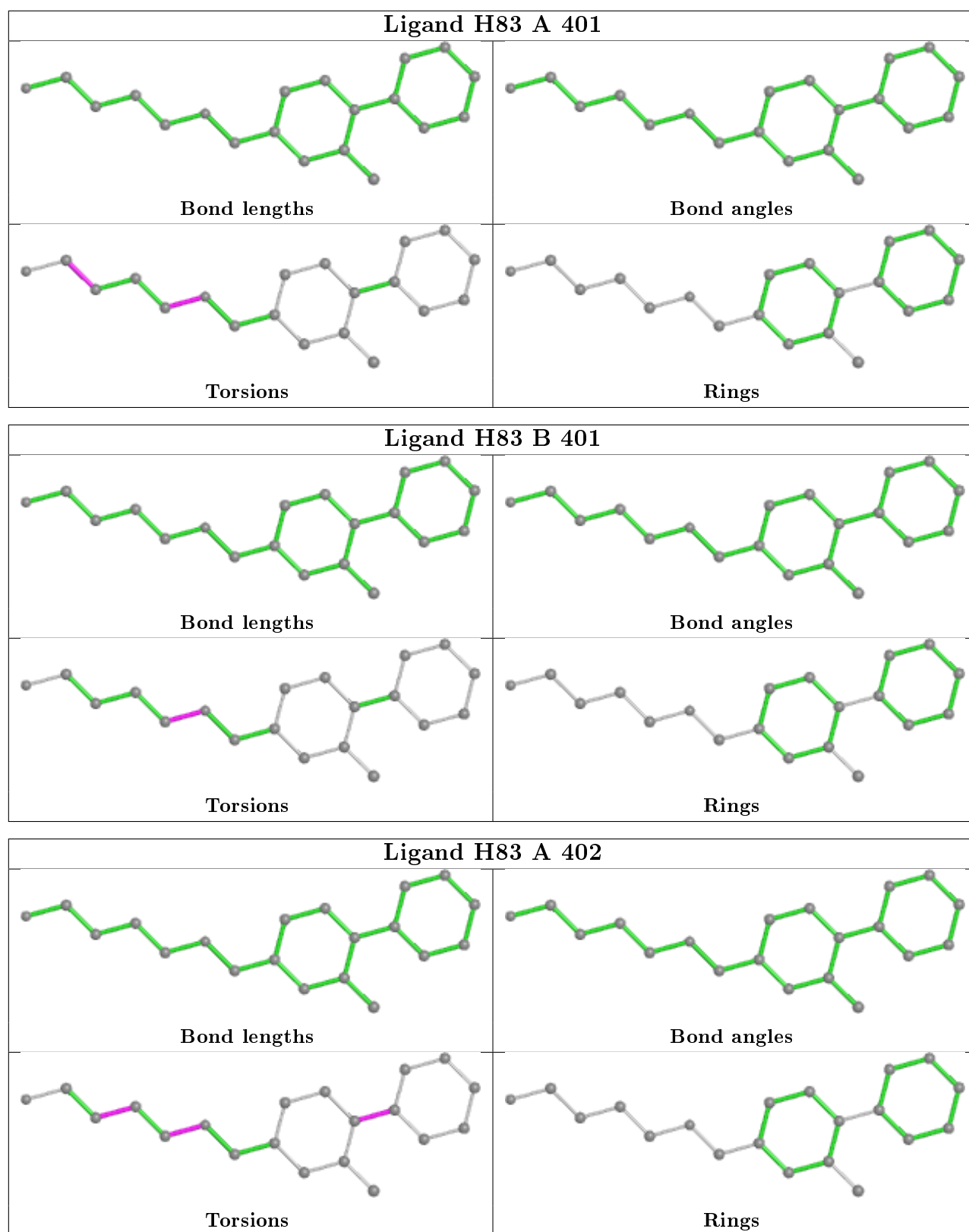
Mol	Chain	Res	Type	Atoms
2	A	401	H83	C2-C3-N1-C4
2	B	401	H83	C2-C3-N1-C4
2	A	402	H83	C2-C3-N1-C4
2	A	401	H83	N-C-C1-C2
2	A	402	H83	C16-C11-C8-C9
2	A	402	H83	C-C1-C2-C3

There are no ring outliers.

1 monomer is involved in 3 short contacts:

Mol	Chain	Res	Type	Clashes	Symm-Clashes
2	A	401	H83	3	0

The following is a two-dimensional graphical depiction of Mogul quality analysis of bond lengths, bond angles, torsion angles, and ring geometry for all instances of the Ligand of Interest. In addition, ligands with molecular weight > 250 and outliers as shown on the validation Tables will also be included. For torsion angles, if less than 5% of the Mogul distribution of torsion angles is within 10 degrees of the torsion angle in question, then that torsion angle is considered an outlier. Any bond that is central to one or more torsion angles identified as an outlier by Mogul will be highlighted in the graph. For rings, the root-mean-square deviation (RMSD) between the ring in question and similar rings identified by Mogul is calculated over all ring torsion angles. If the average RMSD is greater than 60 degrees and the minimal RMSD between the ring in question and any Mogul-identified rings is also greater than 60 degrees, then that ring is considered an outlier. The outliers are highlighted in purple. The color gray indicates Mogul did not find sufficient equivalents in the CSD to analyse the geometry.



## 5.7 Other polymers [i](#)

There are no such residues in this entry.

## 5.8 Polymer linkage issues ⓘ

There are no chain breaks in this entry.



## 6 Fit of model and data ⓘ

### 6.1 Protein, DNA and RNA chains ⓘ

In the following table, the column labelled ‘#RSRZ > 2’ contains the number (and percentage) of RSRZ outliers, followed by percent RSRZ outliers for the chain as percentile scores relative to all X-ray entries and entries of similar resolution. The OWAB column contains the minimum, median, 95<sup>th</sup> percentile and maximum values of the occupancy-weighted average B-factor per residue. The column labelled ‘Q < 0.9’ lists the number of (and percentage) of residues with an average occupancy less than 0.9.

Mol	Chain	Analysed	<RSRZ>	#RSRZ>2	OWAB(Å <sup>2</sup> )	Q<0.9
1	A	326/352 (92%)	0.02	9 (2%) 53 51	11, 24, 54, 103	0
1	B	325/352 (92%)	0.44	25 (7%) 13 12	17, 43, 84, 106	0
All	All	651/704 (92%)	0.23	34 (5%) 27 26	11, 33, 75, 106	0

All (34) RSRZ outliers are listed below:

Mol	Chain	Res	Type	RSRZ
1	A	121	PHE	11.2
1	B	50	TYR	7.4
1	A	125	TYR	7.2
1	A	124	LEU	6.8
1	A	122	LYS	5.5
1	B	123	GLN	5.5
1	B	125	TYR	5.4
1	B	282	GLU	5.0
1	B	270	ASN	4.7
1	B	122	LYS	4.7
1	B	268	ARG	4.5
1	B	128	LEU	4.5
1	B	124	LEU	4.4
1	B	121	PHE	4.3
1	B	49	LYS	4.0
1	A	50	TYR	3.9
1	B	267	PRO	3.6
1	A	126	GLN	2.9
1	B	126	GLN	2.7
1	B	48	GLY	2.6
1	A	123	GLN	2.6
1	B	257	TYR	2.5
1	B	271	ASP	2.5
1	B	119	THR	2.5

*Continued on next page...*

*Continued from previous page...*

Mol	Chain	Res	Type	RSRZ
1	A	268	ARG	2.4
1	B	73	VAL	2.3
1	B	120	ASP	2.2
1	B	283	ARG	2.2
1	B	127	THR	2.2
1	B	3	GLY	2.2
1	B	105	VAL	2.2
1	B	288	GLU	2.1
1	A	282	GLU	2.1
1	B	286	HIS	2.1

## 6.2 Non-standard residues in protein, DNA, RNA chains [i](#)

There are no non-standard protein/DNA/RNA residues in this entry.

## 6.3 Carbohydrates [i](#)

There are no carbohydrates in this entry.

## 6.4 Ligands [i](#)

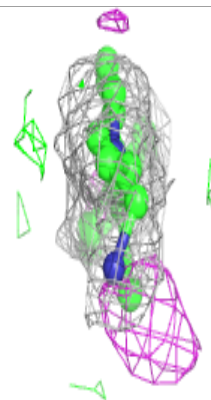
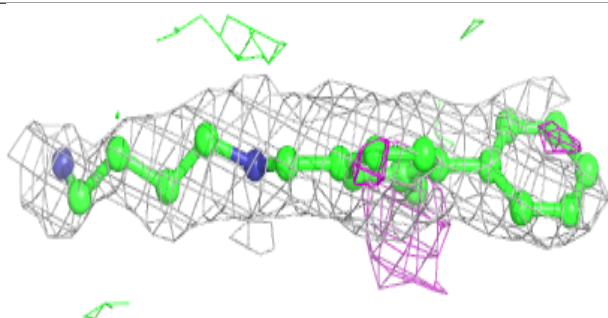
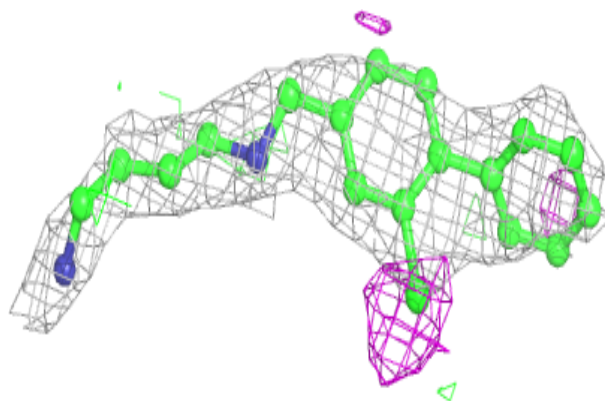
In the following table, the Atoms column lists the number of modelled atoms in the group and the number defined in the chemical component dictionary. The B-factors column lists the minimum, median, 95<sup>th</sup> percentile and maximum values of B factors of atoms in the group. The column labelled 'Q< 0.9' lists the number of atoms with occupancy less than 0.9.

Mol	Type	Chain	Res	Atoms	RSCC	RSR	B-factors(Å <sup>2</sup> )	Q<0.9
2	H83	A	401	20/20	0.80	0.24	37,49,54,65	0
2	H83	B	401	20/20	0.81	0.20	40,46,55,56	0
2	H83	A	402	20/20	0.86	0.19	33,40,55,55	0
3	ACT	A	406	4/4	0.89	0.21	40,41,42,43	0
3	ACT	A	403	4/4	0.89	0.16	22,25,28,32	0
4	PO4	B	402	5/5	0.92	0.12	57,58,59,60	0
3	ACT	A	404	4/4	0.94	0.21	40,42,44,46	0
3	ACT	A	405	4/4	0.98	0.14	34,35,35,39	0

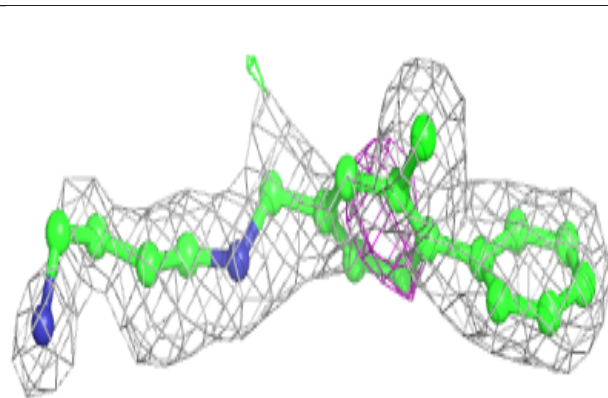
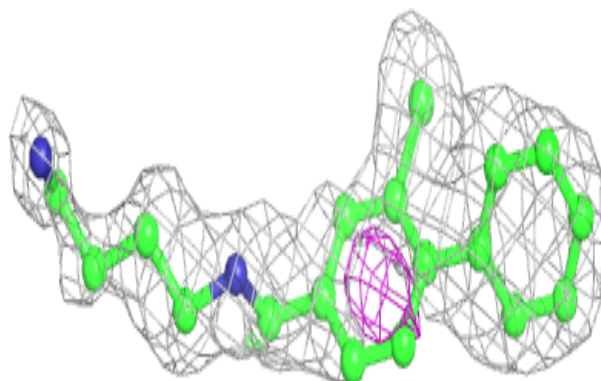
The following is a graphical depiction of the model fit to experimental electron density of all instances of the Ligand of Interest. In addition, ligands with molecular weight > 250 and outliers as shown on the geometry validation Tables will also be included. Each fit is shown from different orientation to approximate a three-dimensional view.

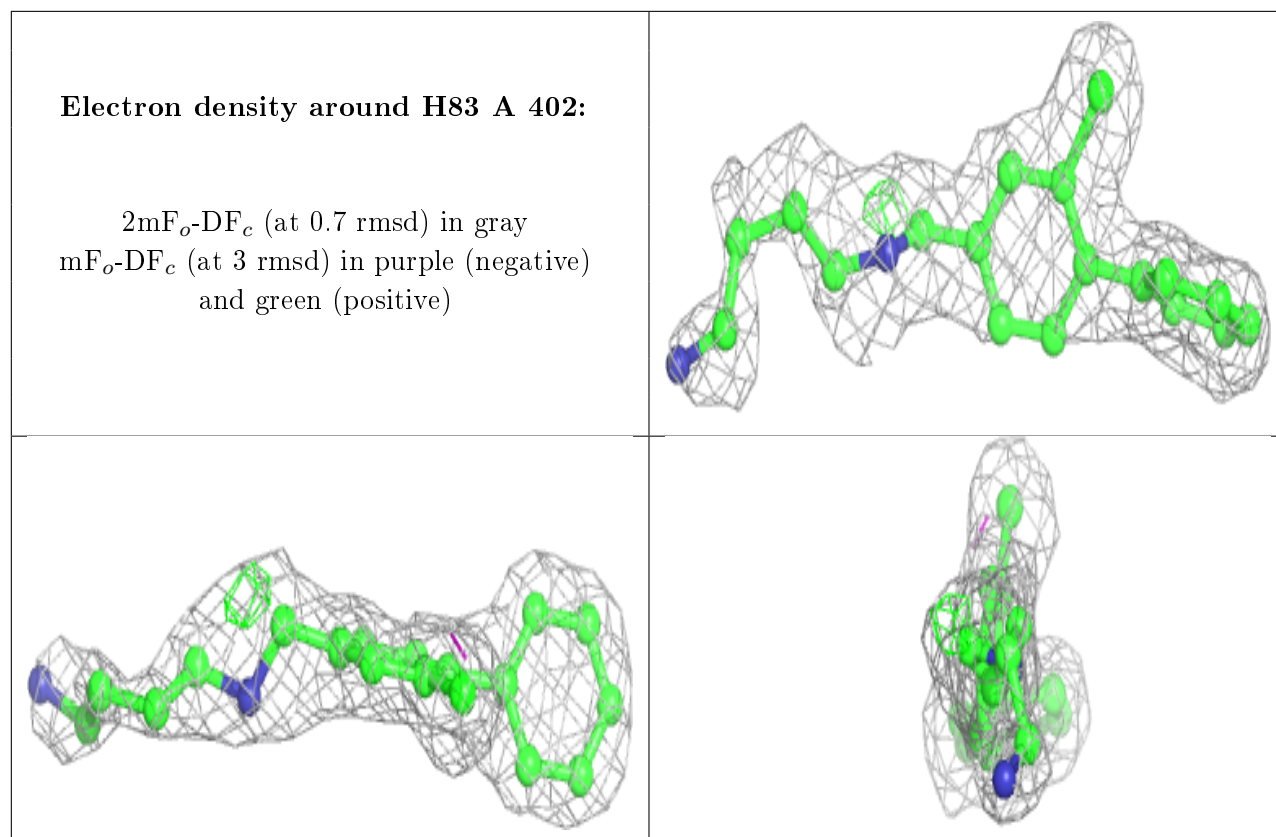
**Electron density around H83 A 401:**

$2mF_o-DF_c$  (at 0.7 rmsd) in gray  
 $mF_o-DF_c$  (at 3 rmsd) in purple (negative)  
and green (positive)

**Electron density around H83 B 401:**

$2mF_o-DF_c$  (at 0.7 rmsd) in gray  
 $mF_o-DF_c$  (at 3 rmsd) in purple (negative)  
and green (positive)





## 6.5 Other polymers [i](#)

There are no such residues in this entry.