



wwPDB X-ray Structure Validation Summary Report ⓘ

May 21, 2020 – 08:48 am BST

PDB ID : 3MNN
Title : A Ruthenium Antitumour Agent Forms Specific Histone Protein Adducts in the Nucleosome Core
Authors : Ong, M.S.; Davey, C.A.
Deposited on : 2010-04-22
Resolution : 2.50 Å(reported)

This is a wwPDB X-ray Structure Validation Summary Report for a publicly released PDB entry.

We welcome your comments at validation@mail.wwpdb.org

A user guide is available at

<https://www.wwpdb.org/validation/2017/XrayValidationReportHelp>

with specific help available everywhere you see the ⓘ symbol.

The following versions of software and data (see [references ⓘ](#)) were used in the production of this report:

MolProbity	:	4.02b-467
Mogul	:	1.8.5 (274361), CSD as541be (2020)
Xtriage (Phenix)	:	1.13
EDS	:	2.11
Percentile statistics	:	20191225.v01 (using entries in the PDB archive December 25th 2019)
Refmac	:	5.8.0158
CCP4	:	7.0.044 (Gargrove)
Ideal geometry (proteins)	:	Engh & Huber (2001)
Ideal geometry (DNA, RNA)	:	Parkinson et al. (1996)
Validation Pipeline (wwPDB-VP)	:	2.11

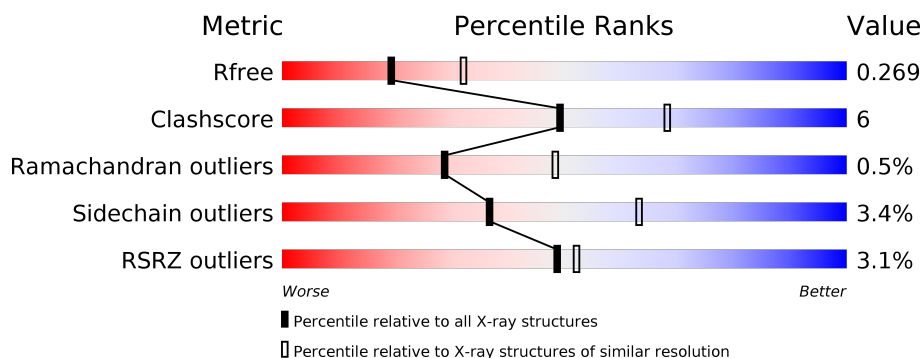
1 Overall quality at a glance

The following experimental techniques were used to determine the structure:

X-RAY DIFFRACTION

The reported resolution of this entry is 2.50 Å.

Percentile scores (ranging between 0-100) for global validation metrics of the entry are shown in the following graphic. The table shows the number of entries on which the scores are based.



Metric	Whole archive (#Entries)	Similar resolution (#Entries, resolution range(Å))
R_{free}	130704	4661 (2.50-2.50)
Clashscore	141614	5346 (2.50-2.50)
Ramachandran outliers	138981	5231 (2.50-2.50)
Sidechain outliers	138945	5233 (2.50-2.50)
RSRZ outliers	127900	4559 (2.50-2.50)

The table below summarises the geometric issues observed across the polymeric chains and their fit to the electron density. The red, orange, yellow and green segments on the lower bar indicate the fraction of residues that contain outliers for ≥ 3 , 2, 1 and 0 types of geometric quality criteria respectively. A grey segment represents the fraction of residues that are not modelled. The numeric value for each fraction is indicated below the corresponding segment, with a dot representing fractions $\leq 5\%$. The upper red bar (where present) indicates the fraction of residues that have poor fit to the electron density. The numeric value is given above the bar.

Mol	Chain	Length	Quality of chain
1	A	135	<div> <div>2%</div> <div> <div></div> <div>64%</div> <div>7%</div> <div>28%</div> </div> </div>
1	E	135	<div> <div>2%</div> <div> <div></div> <div>59%</div> <div>12%</div> <div>28%</div> </div> </div>
2	B	102	<div> <div>3%</div> <div> <div></div> <div>73%</div> <div>8%</div> <div>20%</div> </div> </div>
2	F	102	<div> <div>2%</div> <div> <div></div> <div>69%</div> <div>16%</div> <div>15%</div> </div> </div>
3	C	119	<div> <div>2%</div> <div> <div></div> <div>75%</div> <div>12%</div> <div>11%</div> </div> </div>
3	G	119	<div> <div>5%</div> <div> <div></div> <div>76%</div> <div>11%</div> <div>11%</div> </div> </div>

Continued on next page...

Continued from previous page...

Mol	Chain	Length	Quality of chain
4	D	125	
4	H	125	
5	I	145	
6	J	145	

The following table lists non-polymeric compounds, carbohydrate monomers and non-standard residues in protein, DNA, RNA chains that are outliers for geometric or electron-density-fit criteria:

Mol	Type	Chain	Res	Chirality	Geometry	Clashes	Electron density
10	MML	F	2002	-	-	X	-
11	PTW	F	2003	-	-	X	-

2 Entry composition [i](#)

There are 12 unique types of molecules in this entry. The entry contains 12126 atoms, of which 0 are hydrogens and 0 are deuteriums.

In the tables below, the ZeroOcc column contains the number of atoms modelled with zero occupancy, the AltConf column contains the number of residues with at least one atom in alternate conformation and the Trace column contains the number of residues modelled with at most 2 atoms.

- Molecule 1 is a protein called Histone H3.2.

Mol	Chain	Residues	Atoms					ZeroOcc	AltConf	Trace
1	A	97	Total	C	N	O	S	0	0	0
			802	506	155	138	3			
1	E	97	Total	C	N	O	S	0	0	0
			802	506	155	138	3			

There are 2 discrepancies between the modelled and reference sequences:

Chain	Residue	Modelled	Actual	Comment	Reference
A	102	ALA	GLY	SEE REMARK 999	UNP P84233
E	102	ALA	GLY	SEE REMARK 999	UNP P84233

- Molecule 2 is a protein called Histone H4.

Mol	Chain	Residues	Atoms					ZeroOcc	AltConf	Trace
2	B	82	Total	C	N	O	S	0	0	0
			653	412	127	113	1			
2	F	87	Total	C	N	O	S	0	0	0
			703	442	142	118	1			

- Molecule 3 is a protein called Histone H2A.

Mol	Chain	Residues	Atoms					ZeroOcc	AltConf	Trace
3	C	106	Total	C	N	O		0	0	0
			818	516	160	142				
3	G	106	Total	C	N	O		0	0	0
			818	516	160	142				

- Molecule 4 is a protein called Histone H2B 1.1.

Mol	Chain	Residues	Atoms					ZeroOcc	AltConf	Trace
4	D	95	Total	C	N	O	S	0	0	0
			745	469	134	140	2			

Continued on next page...

Continued from previous page...

Mol	Chain	Residues	Atoms					ZeroOcc	AltConf	Trace
4	H	95	Total	C	N	O	S	0	0	0
			745	469	134	140	2			

There are 2 discrepancies between the modelled and reference sequences:

Chain	Residue	Modelled	Actual	Comment	Reference
D	29	THR	SER	SEE REMARK 999	UNP P02281
H	29	THR	SER	SEE REMARK 999	UNP P02281

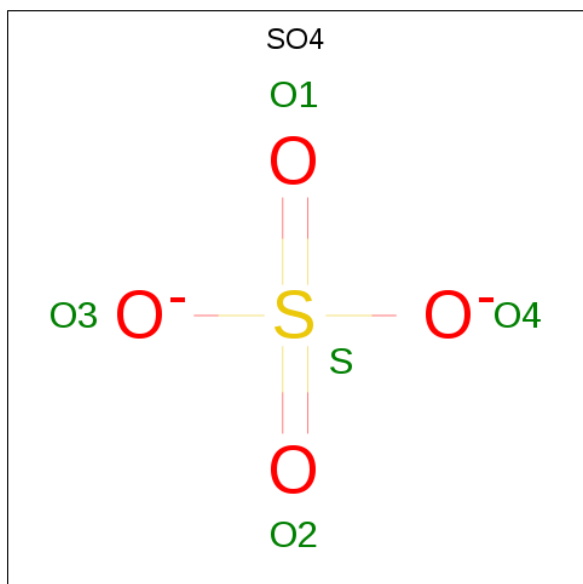
- Molecule 5 is a DNA chain called DNA (145-MER).

Mol	Chain	Residues	Atoms					ZeroOcc	AltConf	Trace
5	I	145	Total	C	N	O	P	0	0	0
			2970	1421	538	867	144			

- Molecule 6 is a DNA chain called DNA (145-MER).

Mol	Chain	Residues	Atoms					ZeroOcc	AltConf	Trace
6	J	145	Total	C	N	O	P	0	0	0
			2969	1421	535	869	144			

- Molecule 7 is SULFATE ION (three-letter code: SO₄) (formula: O₄S).



Mol	Chain	Residues	Atoms			ZeroOcc	AltConf
7	D	1	Total	O	S	0	0
			5	4	1		

Continued on next page...

Continued from previous page...

Mol	Chain	Residues	Atoms			ZeroOcc	AltConf
7	G	1	Total	O	S	0	0
			5	4	1		
7	H	1	Total	O	S	0	0
			5	4	1		

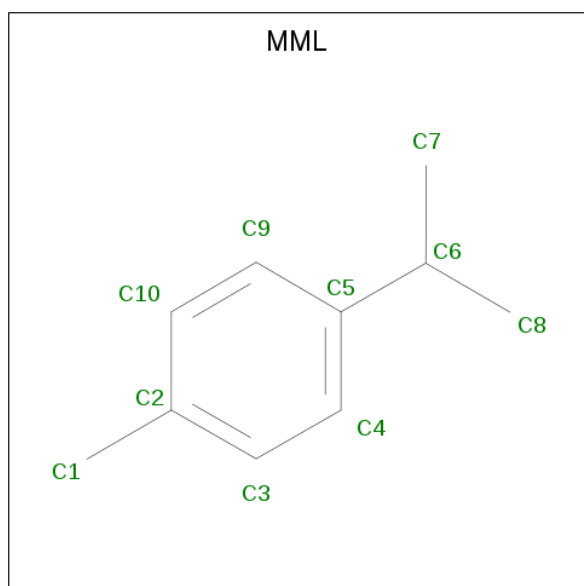
- Molecule 8 is MAGNESIUM ION (three-letter code: MG) (formula: Mg).

Mol	Chain	Residues	Atoms		ZeroOcc	AltConf
8	E	1	Total	Mg	0	0
			1	1		

- Molecule 9 is RUTHENIUM ION (three-letter code: RU) (formula: Ru).

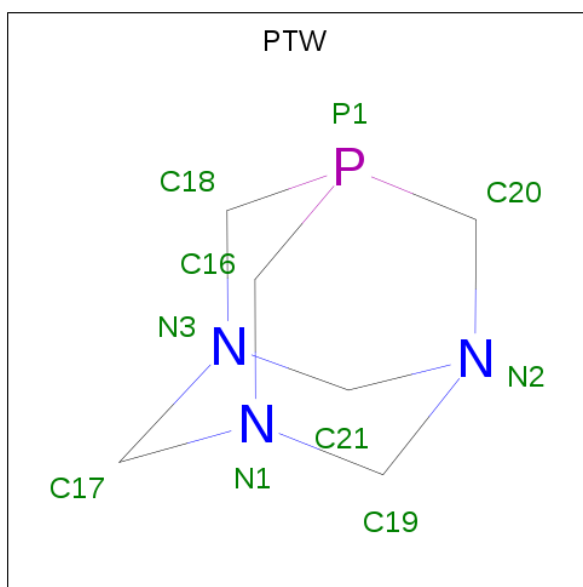
Mol	Chain	Residues	Atoms		ZeroOcc	AltConf
9	H	1	Total	Ru	0	0
			1	1		
9	G	1	Total	Ru	0	0
			1	1		
9	F	1	Total	Ru	0	0
			1	1		

- Molecule 10 is 1-methyl-4-(1-methylethyl)benzene (three-letter code: MML) (formula: C₁₀H₁₄).



Mol	Chain	Residues	Atoms	ZeroOcc	AltConf
10	F	1	Total C 10 10	0	0
10	G	1	Total C 10 10	0	0
10	H	1	Total C 10 10	0	0

- Molecule 11 is 1,3,5-triaza-7-phosphatricyclo[3.3.1.1^{3,7}]decane (three-letter code: PTW) (formula: C₆H₁₂N₃P).



Mol	Chain	Residues	Atoms	ZeroOcc	AltConf
11	F	1	Total C N P 10 6 3 1	0	0
11	G	1	Total C N P 10 6 3 1	0	0
11	H	1	Total C N P 10 6 3 1	0	0

- Molecule 12 is water.

Mol	Chain	Residues	Atoms	ZeroOcc	AltConf
12	A	2	Total O 2 2	0	0
12	B	1	Total O 1 1	0	0
12	C	2	Total O 2 2	0	0

Continued on next page...

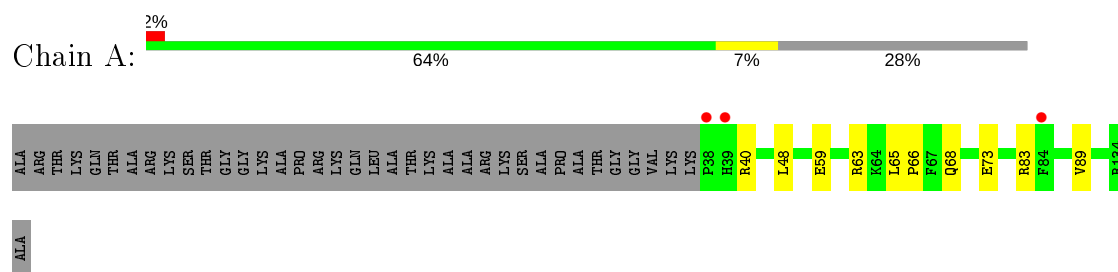
Continued from previous page...

Mol	Chain	Residues	Atoms		ZeroOcc	AltConf
12	E	7	Total 7	O 7	0	0
12	F	6	Total 6	O 6	0	0
12	G	2	Total 2	O 2	0	0
12	H	1	Total 1	O 1	0	0
12	J	1	Total 1	O 1	0	0

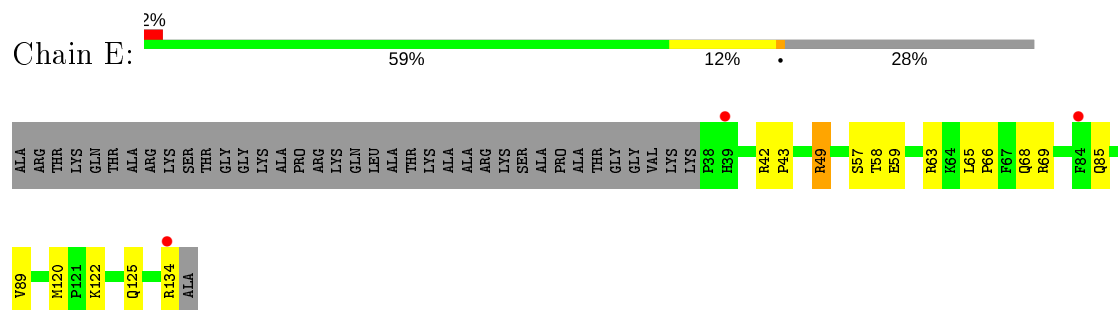
3 Residue-property plots [i](#)

These plots are drawn for all protein, RNA and DNA chains in the entry. The first graphic for a chain summarises the proportions of the various outlier classes displayed in the second graphic. The second graphic shows the sequence view annotated by issues in geometry and electron density. Residues are color-coded according to the number of geometric quality criteria for which they contain at least one outlier: green = 0, yellow = 1, orange = 2 and red = 3 or more. A red dot above a residue indicates a poor fit to the electron density ($RSRZ > 2$). Stretches of 2 or more consecutive residues without any outlier are shown as a green connector. Residues present in the sample, but not in the model, are shown in grey.

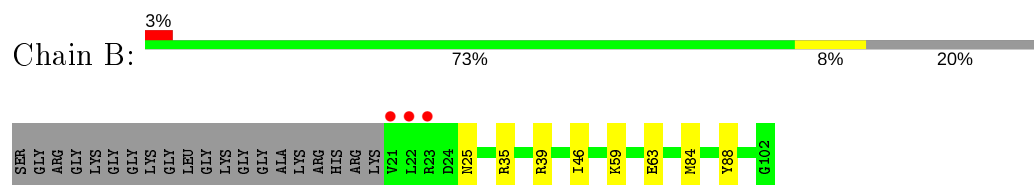
- Molecule 1: Histone H3.2



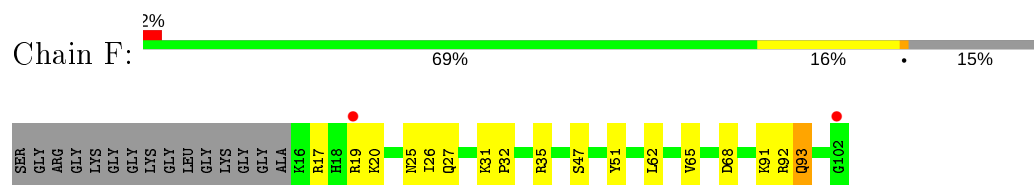
- Molecule 1: Histone H3.2



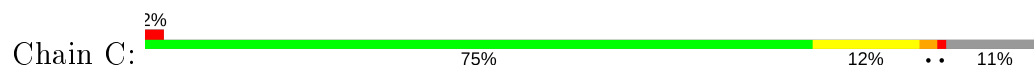
- Molecule 2: Histone H4

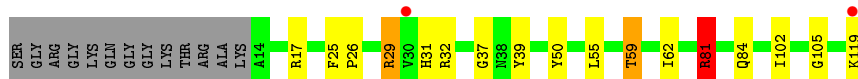


- Molecule 2: Histone H4

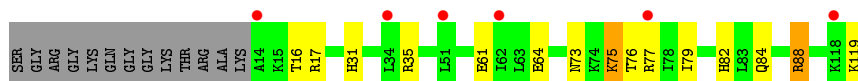
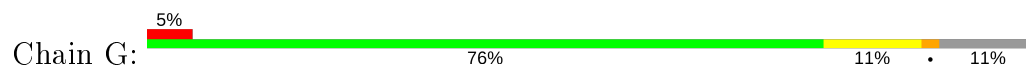


- Molecule 3: Histone H2A

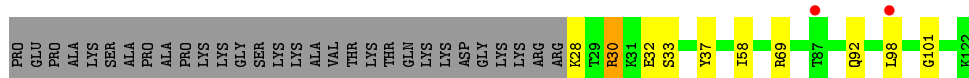




• Molecule 3: Histone H2A



• Molecule 4: Histone H2B 1.1



• Molecule 4: Histone H2B 1.1



• Molecule 5: DNA (145-MER)



• Molecule 6: DNA (145-MER)



4 Data and refinement statistics

Property	Value	Source
Space group	P 21 21 21	Depositor
Cell constants a, b, c, α , β , γ	106.35Å 109.86Å 182.59Å 90.00° 90.00° 90.00°	Depositor
Resolution (Å)	94.13 – 2.50 94.13 – 2.50	Depositor EDS
% Data completeness (in resolution range)	99.5 (94.13-2.50) 99.5 (94.13-2.50)	Depositor EDS
R_{merge}	0.06	Depositor
R_{sym}	(Not available)	Depositor
$\langle I/\sigma(I) \rangle$ ¹	1.82 (at 2.51Å)	Xtriage
Refinement program	REFMAC 5.2.0019	Depositor
R, R_{free}	0.247 , 0.277 0.240 , 0.269	Depositor DCC
R_{free} test set	1485 reflections (2.00%)	wwPDB-VP
Wilson B-factor (Å ²)	69.4	Xtriage
Anisotropy	0.160	Xtriage
Bulk solvent k_{sol} (e/Å ³), B_{sol} (Å ²)	0.30 , 49.5	EDS
L-test for twinning ²	$\langle L \rangle = 0.48$, $\langle L^2 \rangle = 0.31$	Xtriage
Estimated twinning fraction	0.018 for k,h,-l	Xtriage
F_o, F_c correlation	0.94	EDS
Total number of atoms	12126	wwPDB-VP
Average B, all atoms (Å ²)	85.0	wwPDB-VP

Xtriage's analysis on translational NCS is as follows: *The largest off-origin peak in the Patterson function is 2.84% of the height of the origin peak. No significant pseudotranslation is detected.*

¹Intensities estimated from amplitudes.

²Theoretical values of $\langle |L| \rangle$, $\langle L^2 \rangle$ for acentric reflections are 0.5, 0.333 respectively for untwinned datasets, and 0.375, 0.2 for perfectly twinned datasets.

5 Model quality [i](#)

5.1 Standard geometry [i](#)

Bond lengths and bond angles in the following residue types are not validated in this section: PTW, RU, MG, SO4, MML

The Z score for a bond length (or angle) is the number of standard deviations the observed value is removed from the expected value. A bond length (or angle) with $|Z| > 5$ is considered an outlier worth inspection. RMSZ is the root-mean-square of all Z scores of the bond lengths (or angles).

Mol	Chain	Bond lengths		Bond angles	
		RMSZ	$\# Z > 5$	RMSZ	$\# Z > 5$
1	A	0.42	0/814	0.57	0/1092
1	E	0.58	0/814	0.73	0/1092
2	B	0.47	0/660	0.60	0/883
2	F	0.63	0/711	0.73	0/948
3	C	0.56	0/828	0.70	2/1117 (0.2%)
3	G	0.44	0/828	0.59	0/1117
4	D	0.54	0/756	0.60	0/1015
4	H	0.45	0/756	0.58	0/1015
5	I	0.69	0/3332	1.37	33/5141 (0.6%)
6	J	0.67	0/3330	1.36	29/5138 (0.6%)
All	All	0.61	0/12829	1.10	64/18558 (0.3%)

There are no bond length outliers.

The worst 5 of 64 bond angle outliers are listed below:

Mol	Chain	Res	Type	Atoms	Z	Observed(°)	Ideal(°)
5	I	-45	DA	O4'-C1'-N9	8.62	114.03	108.00
6	J	64	DG	O4'-C1'-N9	8.29	113.81	108.00
6	J	53	DA	O4'-C1'-N9	7.86	113.50	108.00
6	J	-71	DT	O4'-C1'-N1	7.75	113.42	108.00
6	J	-61	DC	O4'-C1'-N1	6.80	112.76	108.00

There are no chirality outliers.

There are no planarity outliers.

5.2 Too-close contacts [i](#)

In the following table, the Non-H and H(model) columns list the number of non-hydrogen atoms and hydrogen atoms in the chain respectively. The H(added) column lists the number of hydrogen

atoms added and optimized by MolProbity. The Clashes column lists the number of clashes within the asymmetric unit, whereas Symm-Clashes lists symmetry related clashes.

Mol	Chain	Non-H	H(model)	H(added)	Clashes	Symm-Clashes
1	A	802	0	841	7	0
1	E	802	0	841	16	0
2	B	653	0	696	7	0
2	F	703	0	755	9	0
3	C	818	0	877	18	0
3	G	818	0	877	15	0
4	D	745	0	773	8	0
4	H	745	0	773	7	0
5	I	2970	0	1640	30	0
6	J	2969	0	1641	37	0
7	D	5	0	0	0	0
7	G	5	0	0	0	0
7	H	5	0	0	0	0
8	E	1	0	0	0	0
9	F	1	0	0	0	0
9	G	1	0	0	0	0
9	H	1	0	0	0	0
10	F	10	0	14	6	0
10	G	10	0	14	2	0
10	H	10	0	14	1	0
11	F	10	0	12	6	0
11	G	10	0	12	1	0
11	H	10	0	12	1	0
12	A	2	0	0	0	0
12	B	1	0	0	0	0
12	C	2	0	0	0	0
12	E	7	0	0	1	0
12	F	6	0	0	0	0
12	G	2	0	0	0	0
12	H	1	0	0	0	0
12	J	1	0	0	0	0
All	All	12126	0	9792	128	0

The all-atom clashscore is defined as the number of clashes found per 1000 atoms (including hydrogen atoms). The all-atom clashscore for this structure is 6.

The worst 5 of 128 close contacts within the same asymmetric unit are listed below, sorted by their clash magnitude.

Atom-1	Atom-2	Interatomic distance (Å)	Clash overlap (Å)
1:E:49:ARG:HG3	1:E:49:ARG:HH11	1.32	0.92
10:G:2002:MML:H1B	11:G:2003:PTW:H16A	1.62	0.82
1:E:49:ARG:HH11	1:E:49:ARG:CG	1.94	0.81
4:H:45:VAL:HG12	4:H:46:HIS:HD2	1.45	0.81
6:J:5:DC:H4'	6:J:6:DT:OP1	1.80	0.80

There are no symmetry-related clashes.

5.3 Torsion angles

5.3.1 Protein backbone

In the following table, the Percentiles column shows the percent Ramachandran outliers of the chain as a percentile score with respect to all X-ray entries followed by that with respect to entries of similar resolution.

The Analysed column shows the number of residues for which the backbone conformation was analysed, and the total number of residues.

Mol	Chain	Analysed	Favoured	Allowed	Outliers	Percentiles	
1	A	95/135 (70%)	95 (100%)	0	0	100	100
1	E	95/135 (70%)	94 (99%)	1 (1%)	0	100	100
2	B	80/102 (78%)	79 (99%)	1 (1%)	0	100	100
2	F	85/102 (83%)	78 (92%)	5 (6%)	2 (2%)	6	9
3	C	104/119 (87%)	99 (95%)	5 (5%)	0	100	100
3	G	104/119 (87%)	100 (96%)	4 (4%)	0	100	100
4	D	93/125 (74%)	92 (99%)	0	1 (1%)	14	26
4	H	93/125 (74%)	90 (97%)	2 (2%)	1 (1%)	14	26
All	All	749/962 (78%)	727 (97%)	18 (2%)	4 (0%)	29	48

All (4) Ramachandran outliers are listed below:

Mol	Chain	Res	Type
4	D	101	GLY
2	F	20	LYS
2	F	26	ILE
4	H	101	GLY

5.3.2 Protein sidechains ⓘ

In the following table, the Percentiles column shows the percent sidechain outliers of the chain as a percentile score with respect to all X-ray entries followed by that with respect to entries of similar resolution.

The Analysed column shows the number of residues for which the sidechain conformation was analysed, and the total number of residues.

Mol	Chain	Analysed	Rotameric	Outliers	Percentiles	
1	A	85/110 (77%)	83 (98%)	2 (2%)	49	74
1	E	85/110 (77%)	82 (96%)	3 (4%)	36	62
2	B	67/78 (86%)	67 (100%)	0	100	100
2	F	72/78 (92%)	67 (93%)	5 (7%)	15	30
3	C	84/92 (91%)	80 (95%)	4 (5%)	25	48
3	G	84/92 (91%)	80 (95%)	4 (5%)	25	48
4	D	81/105 (77%)	79 (98%)	2 (2%)	47	73
4	H	81/105 (77%)	79 (98%)	2 (2%)	47	73
All	All	639/770 (83%)	617 (97%)	22 (3%)	37	63

5 of 22 residues with a non-rotameric sidechain are listed below:

Mol	Chain	Res	Type
1	E	59	GLU
2	F	19	ARG
4	H	53	SER
1	E	63	ARG
2	F	17	ARG

Some sidechains can be flipped to improve hydrogen bonding and reduce clashes. All (5) such sidechains are listed below:

Mol	Chain	Res	Type
3	C	31	HIS
4	D	64	ASN
4	D	92	GLN
3	G	31	HIS
4	H	92	GLN

5.3.3 RNA ⓘ

There are no RNA molecules in this entry.

5.4 Non-standard residues in protein, DNA, RNA chains [i](#)

There are no non-standard protein/DNA/RNA residues in this entry.

5.5 Carbohydrates [i](#)

There are no carbohydrates in this entry.

5.6 Ligand geometry [i](#)

Of 13 ligands modelled in this entry, 4 are monoatomic - leaving 9 for Mogul analysis.

In the following table, the Counts columns list the number of bonds (or angles) for which Mogul statistics could be retrieved, the number of bonds (or angles) that are observed in the model and the number of bonds (or angles) that are defined in the Chemical Component Dictionary. The Link column lists molecule types, if any, to which the group is linked. The Z score for a bond length (or angle) is the number of standard deviations the observed value is removed from the expected value. A bond length (or angle) with $|Z| > 2$ is considered an outlier worth inspection. RMSZ is the root-mean-square of all Z scores of the bond lengths (or angles).

Mol	Type	Chain	Res	Link	Bond lengths			Bond angles		
					Counts	RMSZ	# $ Z > 2$	Counts	RMSZ	# $ Z > 2$
11	PTW	G	2003	9	12,12,12	0.62	0	18,18,18	2.50	4 (22%)
10	MML	H	2002	9	10,10,10	2.13	6 (60%)	13,13,13	1.11	1 (7%)
7	SO4	G	1102	-	4,4,4	0.13	0	6,6,6	0.21	0
11	PTW	H	2003	9	12,12,12	0.56	0	18,18,18	2.33	4 (22%)
7	SO4	H	1103	-	4,4,4	0.14	0	6,6,6	0.11	0
11	PTW	F	2003	9	12,12,12	0.59	0	18,18,18	2.19	4 (22%)
10	MML	F	2002	9	10,10,10	2.16	5 (50%)	13,13,13	0.93	1 (7%)
10	MML	G	2002	9	10,10,10	2.22	5 (50%)	13,13,13	0.90	0
7	SO4	D	1101	-	4,4,4	0.15	0	6,6,6	0.22	0

In the following table, the Chirals column lists the number of chiral outliers, the number of chiral centers analysed, the number of these observed in the model and the number defined in the Chemical Component Dictionary. Similar counts are reported in the Torsion and Rings columns. '-' means no outliers of that kind were identified.

Mol	Type	Chain	Res	Link	Chirals	Torsions	Rings
11	PTW	G	2003	9	-	-	0/4/3/3
10	MML	H	2002	9	-	0/4/4/4	0/1/1/1
11	PTW	H	2003	9	-	-	0/4/3/3
11	PTW	F	2003	9	-	-	0/4/3/3
10	MML	F	2002	9	-	0/4/4/4	0/1/1/1

Continued on next page...

Continued from previous page...

Mol	Type	Chain	Res	Link	Chirals	Torsions	Rings
10	MML	G	2002	9	-	2/4/4/4	0/1/1/1

The worst 5 of 16 bond length outliers are listed below:

Mol	Chain	Res	Type	Atoms	Z	Observed(Å)	Ideal(Å)
10	G	2002	MML	C9-C5	3.76	1.45	1.39
10	G	2002	MML	C4-C5	3.58	1.44	1.39
10	H	2002	MML	C4-C5	3.46	1.44	1.39
10	F	2002	MML	C4-C5	3.45	1.44	1.39
10	F	2002	MML	C9-C5	3.39	1.44	1.39

The worst 5 of 14 bond angle outliers are listed below:

Mol	Chain	Res	Type	Atoms	Z	Observed(°)	Ideal(°)
11	G	2003	PTW	P1-C20-N2	-5.77	104.15	114.82
11	G	2003	PTW	P1-C16-N1	-5.52	104.60	114.82
11	G	2003	PTW	P1-C18-N3	-5.48	104.68	114.82
11	H	2003	PTW	P1-C16-N1	-5.30	105.01	114.82
11	H	2003	PTW	P1-C18-N3	-5.28	105.05	114.82

There are no chirality outliers.

All (2) torsion outliers are listed below:

Mol	Chain	Res	Type	Atoms
10	G	2002	MML	C4-C5-C6-C8
10	G	2002	MML	C9-C5-C6-C8

There are no ring outliers.

6 monomers are involved in 9 short contacts:

Mol	Chain	Res	Type	Clashes	Symm-Clashes
11	G	2003	PTW	1	0
10	H	2002	MML	1	0
11	H	2003	PTW	1	0
11	F	2003	PTW	6	0
10	F	2002	MML	6	0
10	G	2002	MML	2	0

5.7 Other polymers [i](#)

There are no such residues in this entry.

5.8 Polymer linkage issues [i](#)

There are no chain breaks in this entry.

6 Fit of model and data ⓘ

6.1 Protein, DNA and RNA chains ⓘ

In the following table, the column labelled ‘#RSRZ> 2’ contains the number (and percentage) of RSRZ outliers, followed by percent RSRZ outliers for the chain as percentile scores relative to all X-ray entries and entries of similar resolution. The OWAB column contains the minimum, median, 95th percentile and maximum values of the occupancy-weighted average B-factor per residue. The column labelled ‘Q< 0.9’ lists the number of (and percentage) of residues with an average occupancy less than 0.9.

Mol	Chain	Analysed	<RSRZ>	#RSRZ>2	OWAB(Å ²)	Q<0.9
1	A	97/135 (71%)	0.56	3 (3%) 49 52	45, 63, 77, 92	0
1	E	97/135 (71%)	0.42	3 (3%) 49 52	33, 48, 68, 83	0
2	B	82/102 (80%)	0.43	3 (3%) 41 45	48, 57, 83, 103	0
2	F	87/102 (85%)	0.41	2 (2%) 60 63	37, 46, 70, 99	0
3	C	106/119 (89%)	0.40	2 (1%) 66 69	33, 54, 73, 88	0
3	G	106/119 (89%)	0.45	6 (5%) 23 25	50, 64, 85, 93	0
4	D	95/125 (76%)	0.43	2 (2%) 63 66	46, 58, 84, 95	0
4	H	95/125 (76%)	0.43	4 (4%) 36 39	50, 66, 95, 103	0
5	I	145/145 (100%)	-0.08	3 (2%) 63 66	59, 113, 142, 154	0
6	J	145/145 (100%)	0.02	5 (3%) 45 48	63, 111, 141, 161	0
All	All	1055/1252 (84%)	0.31	33 (3%) 49 52	33, 63, 134, 161	0

The worst 5 of 33 RSRZ outliers are listed below:

Mol	Chain	Res	Type	RSRZ
3	C	119	LYS	7.5
2	B	21	VAL	5.2
2	F	102	GLY	4.6
5	I	32	DT	4.2
1	A	84	PHE	3.7

6.2 Non-standard residues in protein, DNA, RNA chains ⓘ

There are no non-standard protein/DNA/RNA residues in this entry.

6.3 Carbohydrates [i](#)

There are no carbohydrates in this entry.

6.4 Ligands [i](#)

In the following table, the Atoms column lists the number of modelled atoms in the group and the number defined in the chemical component dictionary. The B-factors column lists the minimum, median, 95th percentile and maximum values of B factors of atoms in the group. The column labelled 'Q< 0.9' lists the number of atoms with occupancy less than 0.9.

Mol	Type	Chain	Res	Atoms	RSCC	RSR	B-factors(\AA^2)	Q<0.9
11	PTW	F	2003	10/10	0.81	0.29	129,129,129,129	0
7	SO4	G	1102	5/5	0.88	0.26	104,104,105,106	0
9	RU	H	2001	1/1	0.89	0.08	155,155,155,155	0
9	RU	F	2001	1/1	0.90	0.05	128,128,128,128	0
10	MML	F	2002	10/10	0.90	0.20	128,128,128,128	0
7	SO4	H	1103	5/5	0.91	0.09	132,132,132,132	0
11	PTW	H	2003	10/10	0.91	0.15	156,156,156,156	0
10	MML	H	2002	10/10	0.93	0.20	155,155,156,156	0
7	SO4	D	1101	5/5	0.94	0.18	95,96,97,97	0
11	PTW	G	2003	10/10	0.97	0.16	103,103,104,104	0
9	RU	G	2001	1/1	0.97	0.15	103,103,103,103	0
10	MML	G	2002	10/10	0.97	0.13	102,103,104,104	0
8	MG	E	1001	1/1	0.98	0.14	46,46,46,46	0

6.5 Other polymers [i](#)

There are no such residues in this entry.