



Full wwPDB X-ray Structure Validation Report ⓘ

May 16, 2020 – 07:20 pm BST

PDB ID : 3MNQ
Title : Crystal structure of myosin-2 motor domain in complex with ADP-metavanadate and resveratrol
Authors : Schneider, J.; Taft, M.; Backhaus, A.; Baruch, P.; Fedorov, R.; Manstein, D.J.
Deposited on : 2010-04-22
Resolution : 2.20 Å(reported)

This is a Full wwPDB X-ray Structure Validation Report for a publicly released PDB entry.

We welcome your comments at validation@mail.wwpdb.org

A user guide is available at

<https://www.wwpdb.org/validation/2017/XrayValidationReportHelp>

with specific help available everywhere you see the ⓘ symbol.

The following versions of software and data (see [references ⓘ](#)) were used in the production of this report:

MolProbity : 4.02b-467
Mogul : 1.8.5 (274361), CSD as541be (2020)
Xtriage (Phenix) : 1.13
EDS : 2.11
buster-report : 1.1.7 (2018)
Percentile statistics : 20191225.v01 (using entries in the PDB archive December 25th 2019)
Refmac : 5.8.0158
CCP4 : 7.0.044 (Gargrove)
Ideal geometry (proteins) : Engh & Huber (2001)
Ideal geometry (DNA, RNA) : Parkinson et al. (1996)
Validation Pipeline (wwPDB-VP) : 2.11

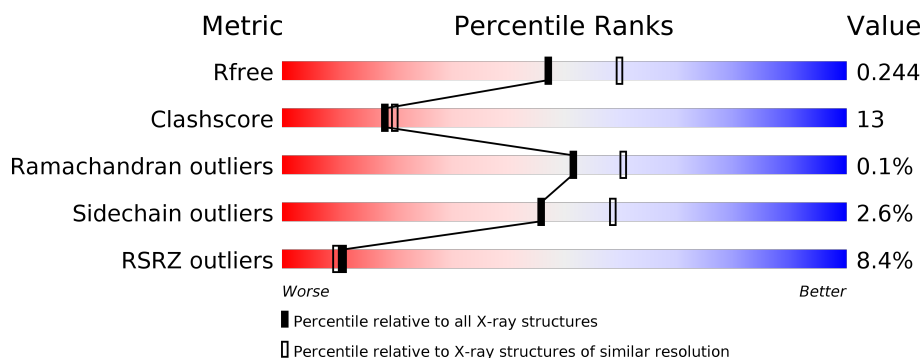
1 Overall quality at a glance

The following experimental techniques were used to determine the structure:

X-RAY DIFFRACTION

The reported resolution of this entry is 2.20 Å.

Percentile scores (ranging between 0-100) for global validation metrics of the entry are shown in the following graphic. The table shows the number of entries on which the scores are based.



Metric	Whole archive (#Entries)	Similar resolution (#Entries, resolution range(Å))
R_{free}	130704	4898 (2.20-2.20)
Clashscore	141614	5594 (2.20-2.20)
Ramachandran outliers	138981	5503 (2.20-2.20)
Sidechain outliers	138945	5504 (2.20-2.20)
RSRZ outliers	127900	4800 (2.20-2.20)

The table below summarises the geometric issues observed across the polymeric chains and their fit to the electron density. The red, orange, yellow and green segments on the lower bar indicate the fraction of residues that contain outliers for ≥ 3 , 2, 1 and 0 types of geometric quality criteria respectively. A grey segment represents the fraction of residues that are not modelled. The numeric value for each fraction is indicated below the corresponding segment, with a dot representing fractions $\leq 5\%$. The upper red bar (where present) indicates the fraction of residues that have poor fit to the electron density. The numeric value is given above the bar.

Mol	Chain	Length	Quality of chain
1	A	788	<div> <div>8%</div> <div>72%</div> <div>20%</div> <div>7%</div> </div>

The following table lists non-polymeric compounds, carbohydrate monomers and non-standard residues in protein, DNA, RNA chains that are outliers for geometric or electron-density-fit criteria:

Mol	Type	Chain	Res	Chirality	Geometry	Clashes	Electron density
4	STL	A	902	-	-	-	X
5	EDO	A	779	-	-	-	X

2 Entry composition

There are 6 unique types of molecules in this entry. The entry contains 6819 atoms, of which 0 are hydrogens and 0 are deuteriums.

In the tables below, the ZeroOcc column contains the number of atoms modelled with zero occupancy, the AltConf column contains the number of residues with at least one atom in alternate conformation and the Trace column contains the number of residues modelled with at most 2 atoms.

- Molecule 1 is a protein called Myosin-2 heavy chain.

Mol	Chain	Residues	Atoms					ZeroOcc	AltConf	Trace
1	A	735	Total	C	N	O	S	0	5	0
			5943	3769	1027	1130	17			

There are 28 discrepancies between the modelled and reference sequences:

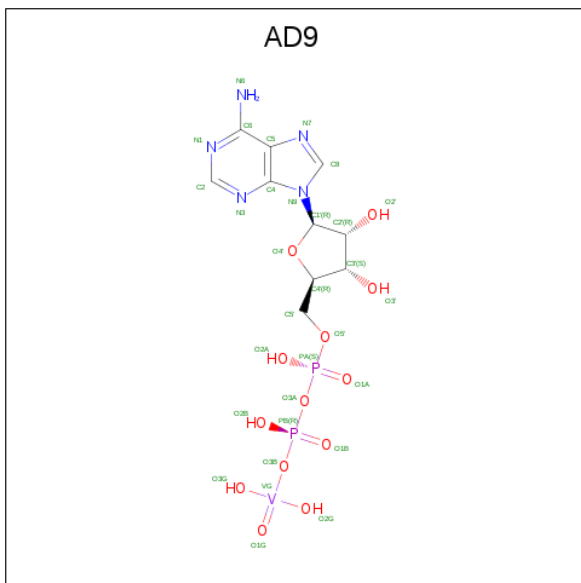
Chain	Residue	Modelled	Actual	Comment	Reference
A	-10	MET	-	EXPRESSION TAG	UNP P08799
A	-9	HIS	-	EXPRESSION TAG	UNP P08799
A	-8	HIS	-	EXPRESSION TAG	UNP P08799
A	-7	HIS	-	EXPRESSION TAG	UNP P08799
A	-6	HIS	-	EXPRESSION TAG	UNP P08799
A	-5	HIS	-	EXPRESSION TAG	UNP P08799
A	-4	HIS	-	EXPRESSION TAG	UNP P08799
A	-3	HIS	-	EXPRESSION TAG	UNP P08799
A	-2	ASP	-	EXPRESSION TAG	UNP P08799
A	-1	GLY	-	EXPRESSION TAG	UNP P08799
A	0	THR	-	EXPRESSION TAG	UNP P08799
A	1	GLU	-	EXPRESSION TAG	UNP P08799
A	2	ASP	-	EXPRESSION TAG	UNP P08799
A	762	LEU	-	EXPRESSION TAG	UNP P08799
A	763	GLU	-	EXPRESSION TAG	UNP P08799
A	764	SER	-	EXPRESSION TAG	UNP P08799
A	765	ASN	-	EXPRESSION TAG	UNP P08799
A	766	GLU	-	EXPRESSION TAG	UNP P08799
A	767	PRO	-	EXPRESSION TAG	UNP P08799
A	768	PRO	-	EXPRESSION TAG	UNP P08799
A	769	MET	-	EXPRESSION TAG	UNP P08799
A	770	ASP	-	EXPRESSION TAG	UNP P08799
A	771	PHE	-	EXPRESSION TAG	UNP P08799
A	772	ASP	-	EXPRESSION TAG	UNP P08799
A	773	ASP	-	EXPRESSION TAG	UNP P08799
A	774	ASP	-	EXPRESSION TAG	UNP P08799
A	776	PRO	-	EXPRESSION TAG	UNP P08799

Continued on next page...

Continued from previous page...

Chain	Residue	Modelled	Actual	Comment	Reference
A	777	PHE	-	EXPRESSION TAG	UNP P08799

- Molecule 2 is ADP METAVANADATE (three-letter code: AD9) (formula: $C_{10}H_{16}N_5O_{13}P_2V$).

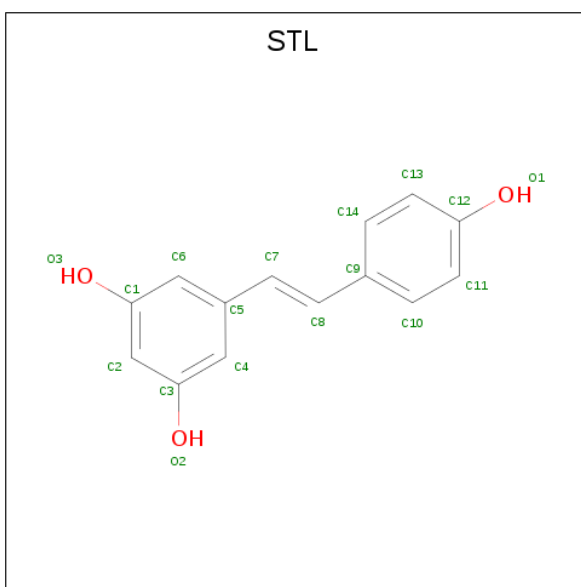


Mol	Chain	Residues	Atoms						ZeroOcc	AltConf
2	A	1	Total	C	N	O	P	V	0	0
			31	10	5	13	2	1		

- Molecule 3 is MAGNESIUM ION (three-letter code: MG) (formula: Mg).

Mol	Chain	Residues	Atoms		ZeroOcc	AltConf
3	A	1	Total	Mg	0	0
			1	1		

- Molecule 4 is RESVERATROL (three-letter code: STL) (formula: $C_{14}H_{12}O_3$).



Mol	Chain	Residues	Atoms			ZeroOcc	AltConf
4	A	1	Total	C	O	0	0
			17	14	3		

- Molecule 5 is 1,2-ETHANEDIOL (three-letter code: EDO) (formula: C₂H₆O₂).



Mol	Chain	Residues	Atoms			ZeroOcc	AltConf
5	A	1	Total	C	O	0	0
			4	2	2		
5	A	1	Total	C	O	0	0
			4	2	2		
5	A	1	Total	C	O	0	0
			4	2	2		

Continued on next page...

Continued from previous page...

Mol	Chain	Residues	Atoms			ZeroOcc	AltConf
5	A	1	Total	C	O	0	0
			4	2	2		

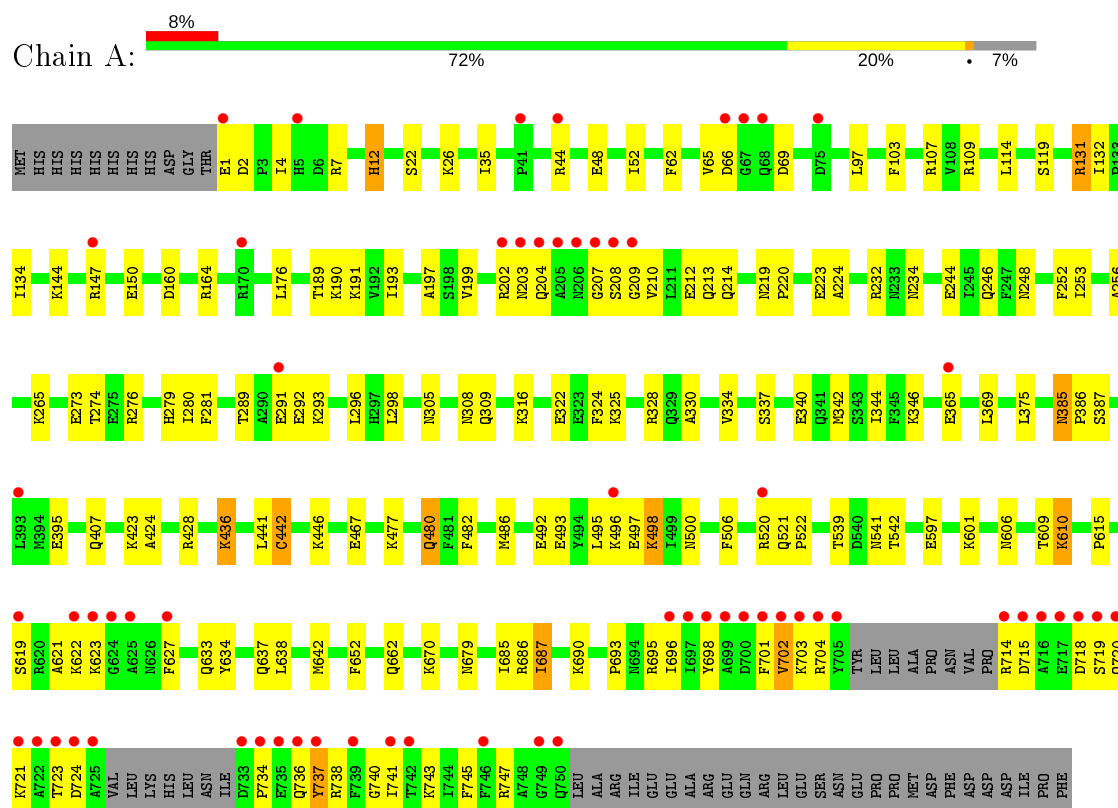
- Molecule 6 is water.

Mol	Chain	Residues	Atoms		ZeroOcc	AltConf
6	A	811	Total	O	0	0
			811	811		

3 Residue-property plots [i](#)

These plots are drawn for all protein, RNA and DNA chains in the entry. The first graphic for a chain summarises the proportions of the various outlier classes displayed in the second graphic. The second graphic shows the sequence view annotated by issues in geometry and electron density. Residues are color-coded according to the number of geometric quality criteria for which they contain at least one outlier: green = 0, yellow = 1, orange = 2 and red = 3 or more. A red dot above a residue indicates a poor fit to the electron density ($RSRZ > 2$). Stretches of 2 or more consecutive residues without any outlier are shown as a green connector. Residues present in the sample, but not in the model, are shown in grey.

- Molecule 1: Myosin-2 heavy chain



4 Data and refinement statistics

Property	Value	Source
Space group	C 2 2 21	Depositor
Cell constants a, b, c, α , β , γ	88.90Å 147.90Å 153.00Å 90.00° 90.00° 90.00°	Depositor
Resolution (Å)	19.64 – 2.20 19.64 – 2.20	Depositor EDS
% Data completeness (in resolution range)	99.5 (19.64-2.20) 99.7 (19.64-2.20)	Depositor EDS
R_{merge}	0.08	Depositor
R_{sym}	0.07	Depositor
$\langle I/\sigma(I) \rangle$ ¹	4.88 (at 2.19Å)	Xtriage
Refinement program	CNS	Depositor
R, R_{free}	0.201 , 0.250 0.200 , 0.244	Depositor DCC
R_{free} test set	2560 reflections (5.00%)	wwPDB-VP
Wilson B-factor (Å ²)	35.0	Xtriage
Anisotropy	0.537	Xtriage
Bulk solvent k_{sol} (e/Å ³), B_{sol} (Å ²)	0.35 , 65.7	EDS
L-test for twinning ²	$\langle L \rangle = 0.49$, $\langle L^2 \rangle = 0.32$	Xtriage
Estimated twinning fraction	0.016 for 1/2*h-1/2*k,-3/2*h-1/2*k,-l 0.026 for 1/2*h+1/2*k,3/2*h-1/2*k,-l	Xtriage
F_o, F_c correlation	0.95	EDS
Total number of atoms	6819	wwPDB-VP
Average B, all atoms (Å ²)	42.0	wwPDB-VP

Xtriage's analysis on translational NCS is as follows: *The largest off-origin peak in the Patterson function is 3.37% of the height of the origin peak. No significant pseudotranslation is detected.*

¹Intensities estimated from amplitudes.

²Theoretical values of $\langle |L| \rangle$, $\langle L^2 \rangle$ for acentric reflections are 0.5, 0.333 respectively for untwinned datasets, and 0.375, 0.2 for perfectly twinned datasets.

5 Model quality [i](#)

5.1 Standard geometry [i](#)

Bond lengths and bond angles in the following residue types are not validated in this section: STL, MG, EDO, AD9

The Z score for a bond length (or angle) is the number of standard deviations the observed value is removed from the expected value. A bond length (or angle) with $|Z| > 5$ is considered an outlier worth inspection. RMSZ is the root-mean-square of all Z scores of the bond lengths (or angles).

Mol	Chain	Bond lengths		Bond angles	
		RMSZ	$\# Z > 5$	RMSZ	$\# Z > 5$
1	A	0.34	0/6058	0.56	0/8168

There are no bond length outliers.

There are no bond angle outliers.

There are no chirality outliers.

There are no planarity outliers.

5.2 Too-close contacts [i](#)

In the following table, the Non-H and H(model) columns list the number of non-hydrogen atoms and hydrogen atoms in the chain respectively. The H(added) column lists the number of hydrogen atoms added and optimized by MolProbity. The Clashes column lists the number of clashes within the asymmetric unit, whereas Symm-Clashes lists symmetry related clashes.

Mol	Chain	Non-H	H(model)	H(added)	Clashes	Symm-Clashes
1	A	5943	0	5874	157	0
2	A	31	0	14	2	0
3	A	1	0	0	0	0
4	A	17	0	9	3	0
5	A	16	0	24	1	0
6	A	811	0	0	23	0
All	All	6819	0	5921	160	0

The all-atom clashscore is defined as the number of clashes found per 1000 atoms (including hydrogen atoms). The all-atom clashscore for this structure is 13.

All (160) close contacts within the same asymmetric unit are listed below, sorted by their clash magnitude.

Atom-1	Atom-2	Interatomic distance (Å)	Clash overlap (Å)
1:A:202:ARG:HB3	1:A:208:SER:HB3	1.37	1.06
1:A:442[A]:CYS:O	1:A:442[A]:CYS:SG	2.36	0.82
1:A:698:TYR:HD1	1:A:719:SER:HG	1.27	0.81
1:A:480:GLN:HE21	1:A:480:GLN:HA	1.46	0.81
1:A:704:ARG:O	1:A:704:ARG:HD2	1.82	0.80
1:A:291:GLU:HG3	6:A:1339:HOH:O	1.83	0.78
1:A:190:LYS:HE2	1:A:219:ASN:HD21	1.49	0.77
1:A:695:ARG:HD3	1:A:745:PHE:CE2	2.20	0.76
1:A:436:LYS:HA	1:A:436:LYS:NZ	2.01	0.76
1:A:97:LEU:HD23	1:A:686:ARG:HG2	1.68	0.74
1:A:342:MET:HG3	1:A:346:LYS:HE3	1.69	0.73
1:A:721:LYS:C	1:A:723:THR:H	1.91	0.72
1:A:234:ASN:HD21	4:A:902:STL:H10	1.54	0.72
1:A:289:THR:OG1	1:A:292:GLU:HG3	1.91	0.70
1:A:219:ASN:HB3	1:A:220:PRO:HD3	1.74	0.70
1:A:477:LYS:HD3	1:A:638:LEU:HD21	1.74	0.70
1:A:610:LYS:HD3	6:A:1808:HOH:O	1.93	0.69
1:A:492:GLU:O	1:A:496:LYS:HG2	1.96	0.66
1:A:248:ASN:HD21	1:A:252:PHE:HB2	1.63	0.64
1:A:493:GLU:HG2	1:A:695:ARG:NE	2.13	0.64
1:A:436:LYS:HA	1:A:436:LYS:HZ2	1.63	0.62
1:A:296:LEU:HB2	1:A:298:LEU:HG	1.81	0.62
1:A:385:ASN:ND2	1:A:387:SER:H	1.97	0.62
1:A:385:ASN:HD22	1:A:385:ASN:C	2.04	0.61
1:A:273:GLU:HG2	1:A:274:THR:HG23	1.83	0.61
1:A:736:GLN:HB3	6:A:1789:HOH:O	2.00	0.61
1:A:718:ASP:C	1:A:720:GLN:N	2.54	0.60
1:A:520:ARG:HD2	6:A:1338:HOH:O	2.01	0.60
1:A:322:GLU:HG3	6:A:1744:HOH:O	2.03	0.58
1:A:615:PRO:O	1:A:619:SER:HB2	2.02	0.58
2:A:900:AD9:O1G	2:A:900:AD9:VG	1.58	0.58
1:A:467:GLU:HG3	5:A:780:EDO:H12	1.86	0.57
1:A:633:GLN:O	1:A:637:GLN:HG3	2.04	0.57
1:A:202:ARG:CB	1:A:208:SER:HB3	2.24	0.56
1:A:369:LEU:HD23	1:A:375:LEU:HD22	1.88	0.56
1:A:385:ASN:HD22	1:A:386:PRO:N	2.04	0.56
1:A:714:ARG:HH21	1:A:714:ARG:HG2	1.71	0.56
1:A:365:GLU:H	1:A:365:GLU:CD	2.09	0.55
1:A:144:LYS:HG3	1:A:199:VAL:HG23	1.87	0.55
1:A:103:PHE:HE2	1:A:107:ARG:NH2	2.05	0.55
1:A:256:ALA:HB3	1:A:441[A]:LEU:HD13	1.88	0.55
1:A:687:ILE:HD13	1:A:687:ILE:O	2.07	0.54

Continued on next page...

Continued from previous page...

Atom-1	Atom-2	Interatomic distance (Å)	Clash overlap (Å)
1:A:48:GLU:OE1	1:A:65:VAL:HG21	2.08	0.54
1:A:234:ASN:H	1:A:662:GLN:HE22	1.55	0.54
1:A:498:LYS:HZ2	1:A:498:LYS:HB3	1.71	0.54
1:A:610:LYS:NZ	1:A:610:LYS:HB2	2.22	0.54
1:A:324:PHE:O	1:A:328:ARG:HG3	2.08	0.54
1:A:721:LYS:C	1:A:723:THR:N	2.61	0.54
1:A:482:PHE:CZ	1:A:486:MET:HG3	2.43	0.53
1:A:539:THR:OG1	1:A:542:THR:HG23	2.08	0.53
1:A:634:TYR:HA	1:A:637:GLN:HE21	1.72	0.53
1:A:506:PHE:HA	6:A:1319:HOH:O	2.08	0.53
1:A:35:ILE:HD11	1:A:62:PHE:CD2	2.43	0.53
1:A:498:LYS:HG3	1:A:741:ILE:HD11	1.90	0.53
1:A:204:GLN:HB2	1:A:208:SER:OG	2.09	0.52
1:A:541[B]:ASN:ND2	6:A:1708:HOH:O	2.42	0.52
1:A:436:LYS:HE3	6:A:1554:HOH:O	2.08	0.52
1:A:131:ARG:HH11	1:A:131:ARG:HG2	1.74	0.52
1:A:209:GLY:O	1:A:213:GLN:HB2	2.09	0.52
1:A:495:LEU:HA	6:A:1566:HOH:O	2.09	0.52
1:A:498:LYS:HE2	6:A:1566:HOH:O	2.10	0.52
1:A:210:VAL:O	1:A:214:GLN:HG3	2.10	0.52
1:A:2:ASP:OD1	1:A:4:ILE:HG12	2.08	0.52
1:A:204:GLN:NE2	1:A:208:SER:OG	2.42	0.52
1:A:131:ARG:HG2	1:A:131:ARG:NH1	2.25	0.52
1:A:189:THR:O	1:A:193:ILE:HG12	2.10	0.52
1:A:190:LYS:HE2	1:A:219:ASN:ND2	2.21	0.51
1:A:698:TYR:HD1	1:A:719:SER:OG	1.92	0.51
1:A:606:ASN:O	1:A:609:THR:HG22	2.10	0.51
1:A:693:PRO:HD2	1:A:747:ARG:O	2.11	0.51
1:A:248:ASN:ND2	1:A:252:PHE:HB2	2.24	0.51
1:A:293:LYS:HG2	1:A:298:LEU:HD12	1.92	0.51
1:A:160:ASP:O	1:A:164:ARG:HG2	2.11	0.50
1:A:734:PRO:HA	1:A:737:TYR:CE1	2.45	0.50
1:A:520:ARG:HB3	1:A:520:ARG:CZ	2.41	0.50
1:A:702:VAL:HG11	1:A:715:ASP:OD1	2.12	0.50
1:A:207:GLY:HA2	1:A:210:VAL:HG23	1.94	0.50
1:A:395:GLU:HA	1:A:407:GLN:O	2.11	0.49
1:A:477:LYS:HD3	1:A:638:LEU:CD2	2.41	0.49
1:A:204:GLN:HB2	1:A:208:SER:CB	2.41	0.49
1:A:212:GLU:CD	1:A:212:GLU:H	2.15	0.49
1:A:330:ALA:O	1:A:334:VAL:HG23	2.12	0.49
1:A:35:ILE:HG23	1:A:52:ILE:HD11	1.94	0.49

Continued on next page...

Continued from previous page...

Atom-1	Atom-2	Interatomic distance (Å)	Clash overlap (Å)
1:A:497:GLU:O	1:A:740:GLY:HA2	2.13	0.49
1:A:202:ARG:HB3	1:A:208:SER:CB	2.27	0.49
1:A:342:MET:HG2	6:A:1696:HOH:O	2.11	0.49
1:A:265:LYS:HE2	1:A:423:LYS:HB3	1.95	0.49
1:A:714:ARG:HG2	1:A:715:ASP:N	2.28	0.49
1:A:714:ARG:HG2	1:A:715:ASP:H	1.77	0.49
1:A:495:LEU:HD23	1:A:495:LEU:C	2.33	0.48
1:A:736:GLN:HA	1:A:747:ARG:HB2	1.94	0.48
1:A:701:PHE:O	1:A:701:PHE:CG	2.66	0.48
1:A:436:LYS:HA	1:A:436:LYS:HZ3	1.75	0.48
1:A:718:ASP:C	1:A:720:GLN:H	2.15	0.48
1:A:316:LYS:HB3	6:A:1772:HOH:O	2.14	0.47
1:A:244:GLU:O	1:A:256:ALA:HA	2.14	0.47
1:A:337:SER:OG	1:A:340:GLU:HG3	2.14	0.47
1:A:622:LYS:HG2	1:A:622:LYS:O	2.15	0.47
1:A:35:ILE:C	1:A:35:ILE:HD12	2.35	0.46
1:A:385:ASN:HD22	1:A:386:PRO:CD	2.28	0.46
1:A:690:LYS:HE3	6:A:1316:HOH:O	2.15	0.46
1:A:696:ILE:HD12	1:A:696:ILE:N	2.31	0.46
1:A:308:ASN:OD1	1:A:309:GLN:NE2	2.45	0.46
1:A:686:ARG:HD2	6:A:1575:HOH:O	2.15	0.46
1:A:97:LEU:HD23	1:A:686:ARG:CG	2.42	0.46
1:A:103:PHE:CE2	1:A:107:ARG:NH2	2.83	0.45
1:A:197:ALA:HA	1:A:253:ILE:CD1	2.46	0.45
1:A:497:GLU:HB3	1:A:740:GLY:HA3	1.97	0.45
1:A:638:LEU:O	1:A:642:MET:HG2	2.16	0.45
1:A:190:LYS:HE2	1:A:223:GLU:OE1	2.17	0.45
1:A:342:MET:O	1:A:346:LYS:HG3	2.17	0.45
1:A:385:ASN:ND2	1:A:385:ASN:C	2.69	0.45
1:A:621:ALA:HB1	1:A:623:LYS:HG3	1.98	0.45
1:A:718:ASP:CB	1:A:720:GLN:HB2	2.47	0.44
1:A:109:ARG:HB3	1:A:114:LEU:HB2	1.99	0.44
1:A:718:ASP:HB3	1:A:720:GLN:HB2	1.98	0.44
1:A:7:ARG:HH21	1:A:7:ARG:HG3	1.83	0.44
1:A:670:LYS:HB3	6:A:1334:HOH:O	2.18	0.44
1:A:737:TYR:O	1:A:738:ARG:HD3	2.17	0.44
1:A:35:ILE:O	1:A:35:ILE:HD12	2.16	0.44
2:A:900:AD9:H4'	6:A:1315:HOH:O	2.16	0.44
1:A:147:ARG:HB2	1:A:150:GLU:HG3	2.00	0.43
1:A:424:ALA:O	1:A:428:ARG:HG3	2.18	0.43
1:A:500:ASN:HB3	6:A:1569:HOH:O	2.19	0.43

Continued on next page...

Continued from previous page...

Atom-1	Atom-2	Interatomic distance (Å)	Clash overlap (Å)
1:A:521:GLN:HA	1:A:522:PRO:HA	1.94	0.43
1:A:316:LYS:HD2	6:A:1112:HOH:O	2.19	0.42
1:A:246:GLN:HB3	1:A:446:LYS:HB3	2.01	0.42
1:A:132:ILE:HG22	1:A:134:ILE:HG23	2.02	0.42
1:A:22:SER:O	1:A:26:LYS:HG3	2.19	0.42
1:A:493:GLU:HG2	1:A:695:ARG:HE	1.83	0.42
1:A:202:ARG:HB3	1:A:208:SER:O	2.20	0.42
1:A:203:ASN:HD22	1:A:203:ASN:N	2.18	0.42
1:A:276:ARG:HH21	1:A:279:HIS:HD1	1.68	0.42
1:A:325:LYS:HE3	6:A:1798:HOH:O	2.20	0.42
1:A:7:ARG:HA	1:A:12:HIS:CG	2.55	0.42
1:A:234:ASN:HD21	4:A:902:STL:C10	2.29	0.42
1:A:702:VAL:HG12	1:A:702:VAL:O	2.19	0.41
1:A:497:GLU:HG3	1:A:745:PHE:CZ	2.55	0.41
1:A:44:ARG:HH11	1:A:44:ARG:HG2	1.85	0.41
1:A:597:GLU:O	1:A:601:LYS:HG3	2.21	0.41
1:A:704:ARG:O	1:A:704:ARG:CD	2.61	0.41
1:A:203:ASN:ND2	1:A:203:ASN:N	2.69	0.41
1:A:289:THR:O	1:A:293:LYS:HG3	2.19	0.41
1:A:224:ALA:HB2	6:A:1483:HOH:O	2.20	0.41
1:A:246:GLN:HB3	1:A:446:LYS:CB	2.51	0.41
1:A:305:ASN:ND2	6:A:1740:HOH:O	2.53	0.41
1:A:745:PHE:N	1:A:745:PHE:CD1	2.89	0.41
1:A:197:ALA:HA	1:A:253:ILE:HD12	2.03	0.41
1:A:305:ASN:O	1:A:309:GLN:HG2	2.21	0.41
1:A:740:GLY:N	1:A:743:LYS:O	2.49	0.41
1:A:232:ARG:NH1	6:A:1324:HOH:O	2.53	0.41
1:A:340:GLU:O	1:A:344:ILE:HG13	2.20	0.41
1:A:176:LEU:HD12	1:A:652:PHE:CE1	2.56	0.41
1:A:273:GLU:C	1:A:274:THR:HG23	2.41	0.40
1:A:498:LYS:HA	1:A:498:LYS:HZ3	1.85	0.40
1:A:35:ILE:HD11	1:A:62:PHE:CE2	2.56	0.40
1:A:280:ILE:HG23	1:A:281:PHE:N	2.36	0.40
1:A:622:LYS:HA	1:A:627:PHE:HA	2.04	0.40
4:A:902:STL:H11	6:A:1772:HOH:O	2.21	0.40
1:A:119:SER:OG	1:A:685:ILE:HD11	2.21	0.40

There are no symmetry-related clashes.

5.3 Torsion angles [i](#)

5.3.1 Protein backbone [i](#)

In the following table, the Percentiles column shows the percent Ramachandran outliers of the chain as a percentile score with respect to all X-ray entries followed by that with respect to entries of similar resolution.

The Analysed column shows the number of residues for which the backbone conformation was analysed, and the total number of residues.

Mol	Chain	Analysed	Favoured	Allowed	Outliers	Percentiles	
1	A	734/788 (93%)	688 (94%)	45 (6%)	1 (0%)	51	60

All (1) Ramachandran outliers are listed below:

Mol	Chain	Res	Type
1	A	702	VAL

5.3.2 Protein sidechains [i](#)

In the following table, the Percentiles column shows the percent sidechain outliers of the chain as a percentile score with respect to all X-ray entries followed by that with respect to entries of similar resolution.

The Analysed column shows the number of residues for which the sidechain conformation was analysed, and the total number of residues.

Mol	Chain	Analysed	Rotameric	Outliers	Percentiles	
1	A	647/691 (94%)	629 (97%)	18 (3%)	43	56

All (18) residues with a non-rotameric sidechain are listed below:

Mol	Chain	Res	Type
1	A	1	GLU
1	A	12	HIS
1	A	66	ASP
1	A	69	ASP
1	A	131	ARG
1	A	191	LYS
1	A	385	ASN
1	A	436	LYS
1	A	442[A]	CYS
1	A	442[B]	CYS

Continued on next page...

Continued from previous page...

Mol	Chain	Res	Type
1	A	480	GLN
1	A	498	LYS
1	A	610	LYS
1	A	679	ASN
1	A	687	ILE
1	A	703	LYS
1	A	724	ASP
1	A	737	TYR

Some sidechains can be flipped to improve hydrogen bonding and reduce clashes. All (14) such sidechains are listed below:

Mol	Chain	Res	Type
1	A	171	GLN
1	A	203	ASN
1	A	204	GLN
1	A	219	ASN
1	A	235	ASN
1	A	305	ASN
1	A	338	GLN
1	A	385	ASN
1	A	480	GLN
1	A	511	GLN
1	A	613	ASN
1	A	637	GLN
1	A	662	GLN
1	A	679	ASN

5.3.3 RNA ⓘ

There are no RNA molecules in this entry.

5.4 Non-standard residues in protein, DNA, RNA chains ⓘ

There are no non-standard protein/DNA/RNA residues in this entry.

5.5 Carbohydrates ⓘ

There are no carbohydrates in this entry.

5.6 Ligand geometry

Of 7 ligands modelled in this entry, 1 is monoatomic - leaving 6 for Mogul analysis.

In the following table, the Counts columns list the number of bonds (or angles) for which Mogul statistics could be retrieved, the number of bonds (or angles) that are observed in the model and the number of bonds (or angles) that are defined in the Chemical Component Dictionary. The Link column lists molecule types, if any, to which the group is linked. The Z score for a bond length (or angle) is the number of standard deviations the observed value is removed from the expected value. A bond length (or angle) with $|Z| > 2$ is considered an outlier worth inspection. RMSZ is the root-mean-square of all Z scores of the bond lengths (or angles).

Mol	Type	Chain	Res	Link	Bond lengths			Bond angles		
					Counts	RMSZ	# Z > 2	Counts	RMSZ	# Z > 2
2	AD9	A	900	3,6	24,33,33	1.81	5 (20%)	26,52,52	1.26	3 (11%)
5	EDO	A	903	-	3,3,3	0.30	0	2,2,2	0.27	0
5	EDO	A	780	-	3,3,3	0.29	0	2,2,2	0.27	0
5	EDO	A	779	-	3,3,3	0.30	0	2,2,2	0.28	0
4	STL	A	902	-	18,18,18	1.66	4 (22%)	24,24,24	0.57	0
5	EDO	A	778	-	3,3,3	0.32	0	2,2,2	0.30	0

In the following table, the Chirals column lists the number of chiral outliers, the number of chiral centers analysed, the number of these observed in the model and the number defined in the Chemical Component Dictionary. Similar counts are reported in the Torsion and Rings columns. '-' means no outliers of that kind were identified.

Mol	Type	Chain	Res	Link	Chirals	Torsions	Rings
2	AD9	A	900	3,6	-	1/12/38/38	0/3/3/3
5	EDO	A	903	-	-	0/1/1/1	-
5	EDO	A	780	-	-	0/1/1/1	-
5	EDO	A	779	-	-	0/1/1/1	-
4	STL	A	902	-	-	4/5/5/5	0/2/2/2
5	EDO	A	778	-	-	0/1/1/1	-

All (9) bond length outliers are listed below:

Mol	Chain	Res	Type	Atoms	Z	Observed(Å)	Ideal(Å)
2	A	900	AD9	PB-O1B	5.10	1.69	1.50
2	A	900	AD9	O4'-C1'	3.96	1.46	1.41
2	A	900	AD9	PA-O2A	3.12	1.70	1.55
2	A	900	AD9	C2-N3	3.01	1.36	1.32
4	A	902	STL	C2-C1	2.42	1.42	1.39
4	A	902	STL	C2-C3	2.33	1.42	1.39
4	A	902	STL	C4-C3	2.26	1.42	1.39
4	A	902	STL	C9-C8	2.19	1.53	1.47

Continued on next page...

Continued from previous page...

Mol	Chain	Res	Type	Atoms	Z	Observed(Å)	Ideal(Å)
2	A	900	AD9	C2'-C1'	2.18	1.57	1.53

All (3) bond angle outliers are listed below:

Mol	Chain	Res	Type	Atoms	Z	Observed(°)	Ideal(°)
2	A	900	AD9	O3B-PB-O1B	-3.28	98.71	110.99
2	A	900	AD9	O2B-PB-O3B	2.70	116.95	107.52
2	A	900	AD9	O5'-PA-O1A	2.17	117.55	109.07

There are no chirality outliers.

All (5) torsion outliers are listed below:

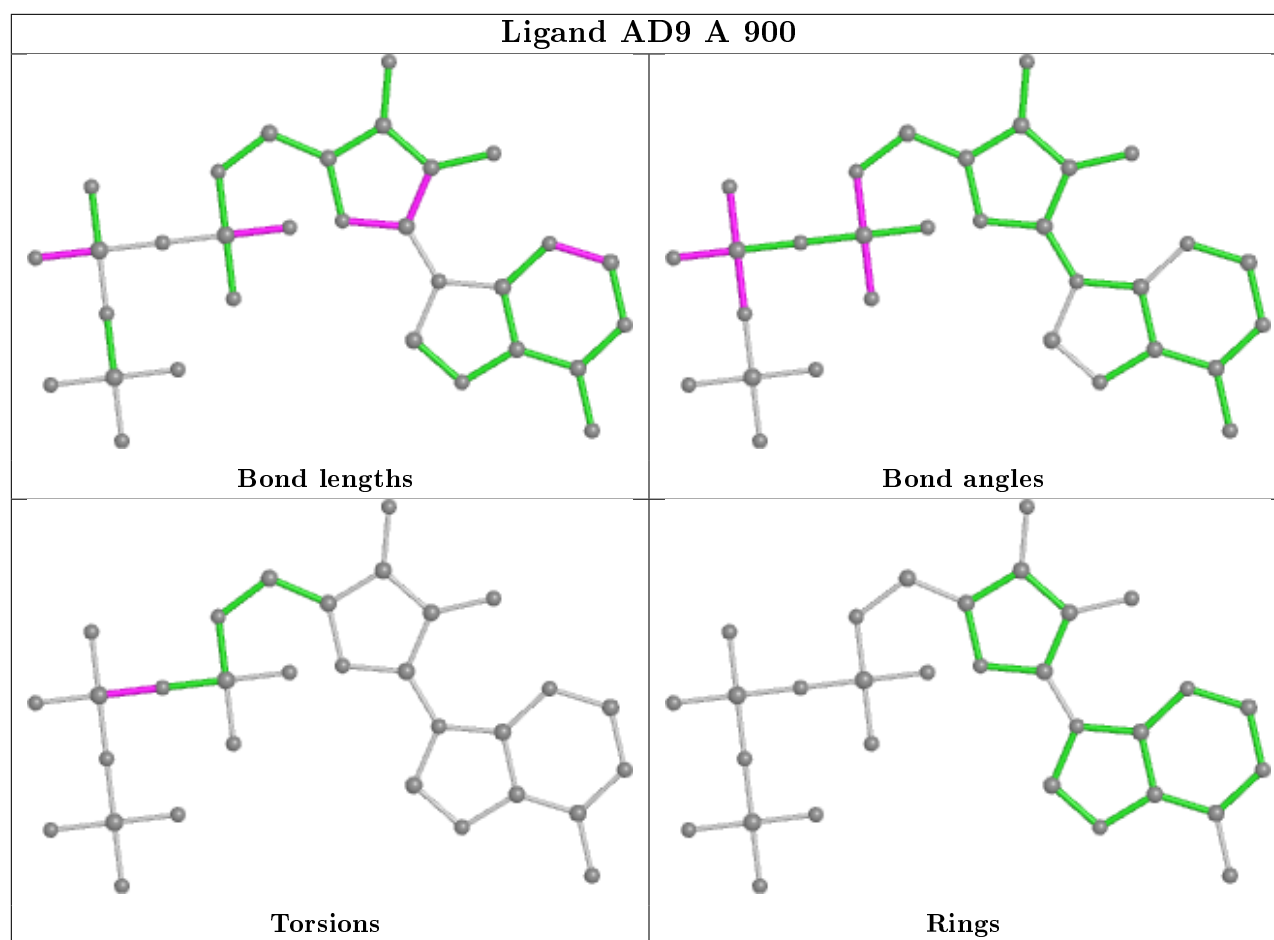
Mol	Chain	Res	Type	Atoms
4	A	902	STL	C6-C5-C7-C8
4	A	902	STL	C7-C8-C9-C10
4	A	902	STL	C4-C5-C7-C8
4	A	902	STL	C7-C8-C9-C14
2	A	900	AD9	PA-O3A-PB-O1B

There are no ring outliers.

3 monomers are involved in 6 short contacts:

Mol	Chain	Res	Type	Clashes	Symm-Clashes
2	A	900	AD9	2	0
5	A	780	EDO	1	0
4	A	902	STL	3	0

The following is a two-dimensional graphical depiction of Mogul quality analysis of bond lengths, bond angles, torsion angles, and ring geometry for all instances of the Ligand of Interest. In addition, ligands with molecular weight > 250 and outliers as shown on the validation Tables will also be included. For torsion angles, if less than 5% of the Mogul distribution of torsion angles is within 10 degrees of the torsion angle in question, then that torsion angle is considered an outlier. Any bond that is central to one or more torsion angles identified as an outlier by Mogul will be highlighted in the graph. For rings, the root-mean-square deviation (RMSD) between the ring in question and similar rings identified by Mogul is calculated over all ring torsion angles. If the average RMSD is greater than 60 degrees and the minimal RMSD between the ring in question and any Mogul-identified rings is also greater than 60 degrees, then that ring is considered an outlier. The outliers are highlighted in purple. The color gray indicates Mogul did not find sufficient equivalents in the CSD to analyse the geometry.



5.7 Other polymers [i](#)

There are no such residues in this entry.

5.8 Polymer linkage issues [i](#)

There are no chain breaks in this entry.

6 Fit of model and data

6.1 Protein, DNA and RNA chains

In the following table, the column labelled ‘#RSRZ> 2’ contains the number (and percentage) of RSRZ outliers, followed by percent RSRZ outliers for the chain as percentile scores relative to all X-ray entries and entries of similar resolution. The OWAB column contains the minimum, median, 95th percentile and maximum values of the occupancy-weighted average B-factor per residue. The column labelled ‘Q< 0.9’ lists the number of (and percentage) of residues with an average occupancy less than 0.9.

Mol	Chain	Analysed	<RSRZ>	#RSRZ>2	OWAB(Å ²)	Q<0.9
1	A	735/788 (93%)	0.26	62 (8%) 11 9	21, 39, 65, 73	0

All (62) RSRZ outliers are listed below:

Mol	Chain	Res	Type	RSRZ
1	A	705	TYR	8.9
1	A	205	ALA	8.0
1	A	206	ASN	7.8
1	A	207	GLY	7.4
1	A	716	ALA	6.7
1	A	699	ALA	6.7
1	A	208	SER	6.6
1	A	720	GLN	6.6
1	A	734	PRO	6.5
1	A	717	GLU	6.3
1	A	746	PHE	6.1
1	A	721	LYS	6.1
1	A	741	ILE	5.9
1	A	700	ASP	5.8
1	A	701	PHE	5.7
1	A	725	ALA	5.7
1	A	203	ASN	5.6
1	A	737	TYR	5.6
1	A	704	ARG	5.5
1	A	698	TYR	5.1
1	A	715	ASP	5.0
1	A	722	ALA	4.9
1	A	696	ILE	4.9
1	A	714	ARG	4.9
1	A	723	THR	4.8
1	A	724	ASP	4.5
1	A	702	VAL	4.3

Continued on next page...

Continued from previous page...

Mol	Chain	Res	Type	RSRZ
1	A	204	GLN	4.3
1	A	209	GLY	4.0
1	A	718	ASP	4.0
1	A	697	ILE	3.6
1	A	291	GLU	3.5
1	A	1	GLU	3.5
1	A	622	LYS	3.5
1	A	202	ARG	3.3
1	A	67	GLY	3.2
1	A	749	GLY	3.2
1	A	623	LYS	3.2
1	A	703	LYS	3.1
1	A	625	ALA	3.1
1	A	735	GLU	3.0
1	A	147	ARG	2.9
1	A	496	LYS	2.9
1	A	66	ASP	2.9
1	A	170	ARG	2.8
1	A	750	GLN	2.7
1	A	75	ASP	2.6
1	A	624	GLY	2.6
1	A	733	ASP	2.6
1	A	719	SER	2.5
1	A	365	GLU	2.5
1	A	393	LEU	2.5
1	A	41	PRO	2.5
1	A	5	HIS	2.4
1	A	736	GLN	2.4
1	A	44	ARG	2.3
1	A	68	GLN	2.3
1	A	742	THR	2.2
1	A	520	ARG	2.2
1	A	739	PHE	2.0
1	A	619	SER	2.0
1	A	627	PHE	2.0

6.2 Non-standard residues in protein, DNA, RNA chains ⓘ

There are no non-standard protein/DNA/RNA residues in this entry.

6.3 Carbohydrates ⓘ

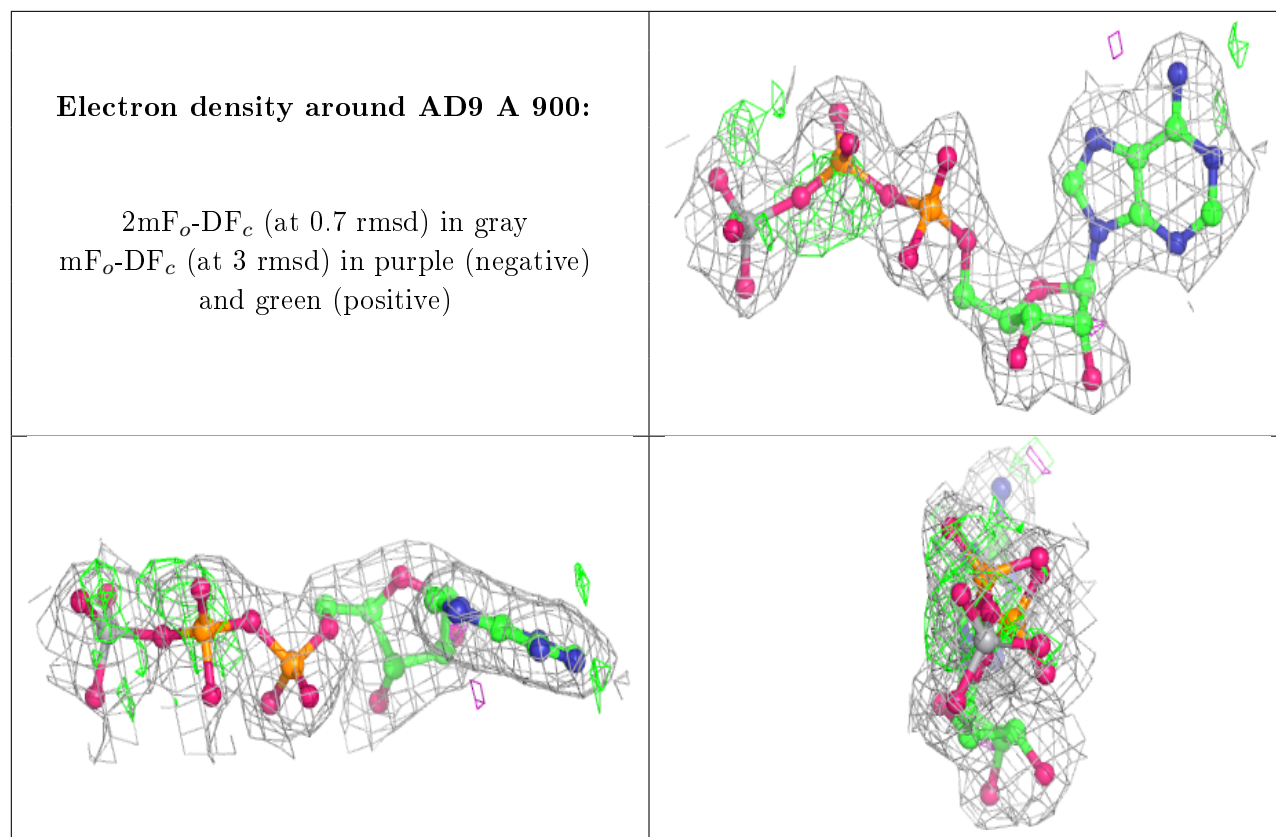
There are no carbohydrates in this entry.

6.4 Ligands ⓘ

In the following table, the Atoms column lists the number of modelled atoms in the group and the number defined in the chemical component dictionary. The B-factors column lists the minimum, median, 95th percentile and maximum values of B factors of atoms in the group. The column labelled 'Q< 0.9' lists the number of atoms with occupancy less than 0.9.

Mol	Type	Chain	Res	Atoms	RSCC	RSR	B-factors(Å ²)	Q<0.9
4	STL	A	902	17/17	0.71	0.47	64,64,65,65	0
5	EDO	A	779	4/4	0.74	0.56	62,62,63,64	0
5	EDO	A	903	4/4	0.84	0.24	66,67,67,67	0
5	EDO	A	780	4/4	0.86	0.30	68,69,69,69	0
2	AD9	A	900	31/31	0.97	0.13	26,29,32,42	0
3	MG	A	901	1/1	0.98	0.15	29,29,29,29	0
5	EDO	A	778	4/4	0.98	0.08	30,32,33,33	0

The following is a graphical depiction of the model fit to experimental electron density of all instances of the Ligand of Interest. In addition, ligands with molecular weight > 250 and outliers as shown on the geometry validation Tables will also be included. Each fit is shown from different orientation to approximate a three-dimensional view.



6.5 Other polymers [i](#)

There are no such residues in this entry.