



# Full wwPDB X-ray Structure Validation Report ⓘ

Aug 7, 2020 – 06:51 PM BST

PDB ID : 5MOI  
Title : Crystal structure of human IgE-Fc epsilon 3-4  
Authors : Dore, K.A.; Davies, A.M.; Drinkwater, N.; Beavil, A.J.; McDonnell, J.M.; Sutton, B.J.  
Deposited on : 2016-12-14  
Resolution : 2.20 Å(reported)

This is a Full wwPDB X-ray Structure Validation Report for a publicly released PDB entry.

We welcome your comments at [validation@mail.wwpdb.org](mailto:validation@mail.wwpdb.org)

A user guide is available at

<https://www.wwpdb.org/validation/2017/XrayValidationReportHelp>

with specific help available everywhere you see the ⓘ symbol.

---

The following versions of software and data (see [references ⓘ](#)) were used in the production of this report:

MolProbity : 4.02b-467  
Mogul : 1.8.5 (274361), CSD as541be (2020)  
Xtriage (Phenix) : 1.13  
EDS : 2.13.1  
Percentile statistics : 20191225.v01 (using entries in the PDB archive December 25th 2019)  
Refmac : 5.8.0158  
CCP4 : 7.0.044 (Gargrove)  
Ideal geometry (proteins) : Engh & Huber (2001)  
Ideal geometry (DNA, RNA) : Parkinson et al. (1996)  
Validation Pipeline (wwPDB-VP) : 2.13.1

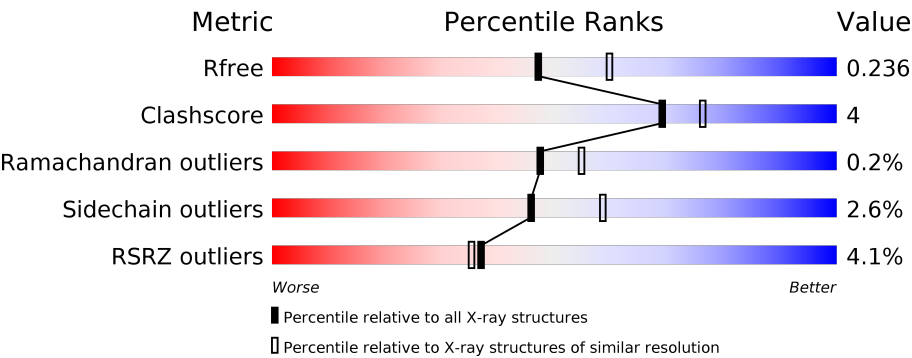
# 1 Overall quality at a glance i

The following experimental techniques were used to determine the structure:

*X-RAY DIFFRACTION*

The reported resolution of this entry is 2.20 Å.

Percentile scores (ranging between 0-100) for global validation metrics of the entry are shown in the following graphic. The table shows the number of entries on which the scores are based.




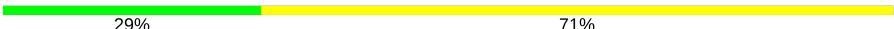
Metric	Whole archive (#Entries)	Similar resolution (#Entries, resolution range(Å))
$R_{free}$	130704	4898 (2.20-2.20)
Clashscore	141614	5594 (2.20-2.20)
Ramachandran outliers	138981	5503 (2.20-2.20)
Sidechain outliers	138945	5504 (2.20-2.20)
RSRZ outliers	127900	4800 (2.20-2.20)

The table below summarises the geometric issues observed across the polymeric chains and their fit to the electron density. The red, orange, yellow and green segments on the lower bar indicate the fraction of residues that contain outliers for  $\geq 3$ , 2, 1 and 0 types of geometric quality criteria respectively. A grey segment represents the fraction of residues that are not modelled. The numeric value for each fraction is indicated below the corresponding segment, with a dot representing fractions  $\leq 5\%$ . The upper red bar (where present) indicates the fraction of residues that have poor fit to the electron density. The numeric value is given above the bar.

Mol	Chain	Length	Quality of chain
1	A	223	<div><div>3%</div><div><div></div><div>74%</div><div>5%</div><div>21%</div></div></div>
1	B	223	<div><div>4%</div><div><div></div><div>74%</div><div>11%</div><div>14%</div></div></div>
1	C	223	<div><div>3%</div><div><div></div><div>83%</div><div>9%</div><div>7%</div></div></div>
1	D	223	<div><div>3%</div><div><div></div><div>77%</div><div>10%</div><div>13%</div></div></div>
1	E	223	<div><div>%</div><div><div></div><div>78%</div><div>11%</div><div>10%</div></div></div>
1	F	223	<div><div>9%</div><div><div></div><div>70%</div><div>9%</div><div>21%</div></div></div>

Continued on next page...

*Continued from previous page...*

Mol	Chain	Length	Quality of chain
2	G	4	 50% 50%
3	H	5	 60% 40%
3	I	5	 60% 40%
3	K	5	 40% 60%
4	J	7	 29% 71%
5	L	3	 33% 67%

## 2 Entry composition

There are 9 unique types of molecules in this entry. The entry contains 9364 atoms, of which 0 are hydrogens and 0 are deuteriums.

In the tables below, the ZeroOcc column contains the number of atoms modelled with zero occupancy, the AltConf column contains the number of residues with at least one atom in alternate conformation and the Trace column contains the number of residues modelled with at most 2 atoms.

- Molecule 1 is a protein called Ig epsilon chain C region.

Mol	Chain	Residues	Atoms					ZeroOcc	AltConf	Trace
1	A	177	Total	C	N	O	S	0	3	0
			1366	859	240	262	5			
1	B	191	Total	C	N	O	S	0	0	0
			1463	924	255	278	6			
1	C	208	Total	C	N	O	S	0	0	0
			1588	996	288	298	6			
1	D	193	Total	C	N	O	S	0	0	0
			1440	904	250	280	6			
1	E	200	Total	C	N	O	S	0	0	0
			1544	968	277	293	6			
1	F	176	Total	C	N	O	S	0	0	0
			1331	834	234	258	5			

There are 30 discrepancies between the modelled and reference sequences:

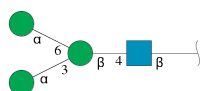
Chain	Residue	Modelled	Actual	Comment	Reference
A	325	ALA	-	expression tag	UNP P01854
A	326	ASP	-	expression tag	UNP P01854
A	327	PRO	-	expression tag	UNP P01854
A	371	GLN	ASN	conflict	UNP P01854
A	383	GLN	ASN	conflict	UNP P01854
B	325	ALA	-	expression tag	UNP P01854
B	326	ASP	-	expression tag	UNP P01854
B	327	PRO	-	expression tag	UNP P01854
B	371	GLN	ASN	conflict	UNP P01854
B	383	GLN	ASN	conflict	UNP P01854
C	325	ALA	-	expression tag	UNP P01854
C	326	ASP	-	expression tag	UNP P01854
C	327	PRO	-	expression tag	UNP P01854
C	371	GLN	ASN	conflict	UNP P01854
C	383	GLN	ASN	conflict	UNP P01854
D	325	ALA	-	expression tag	UNP P01854
D	326	ASP	-	expression tag	UNP P01854

*Continued on next page...*

Continued from previous page...

Chain	Residue	Modelled	Actual	Comment	Reference
D	327	PRO	-	expression tag	UNP P01854
D	371	GLN	ASN	conflict	UNP P01854
D	383	GLN	ASN	conflict	UNP P01854
E	325	ALA	-	expression tag	UNP P01854
E	326	ASP	-	expression tag	UNP P01854
E	327	PRO	-	expression tag	UNP P01854
E	371	GLN	ASN	conflict	UNP P01854
E	383	GLN	ASN	conflict	UNP P01854
F	325	ALA	-	expression tag	UNP P01854
F	326	ASP	-	expression tag	UNP P01854
F	327	PRO	-	expression tag	UNP P01854
F	371	GLN	ASN	conflict	UNP P01854
F	383	GLN	ASN	conflict	UNP P01854

- Molecule 2 is an oligosaccharide called alpha-D-mannopyranose-(1-3)-[alpha-D-mannopyranose-(1-6)]beta-D-mannopyranose-(1-4)-2-acetamido-2-deoxy-beta-D-glucopyranose.



Mol	Chain	Residues	Atoms				ZeroOcc	AltConf	Trace
2	G	4	Total	C	N	O	0	0	0
			47	26	1	20			

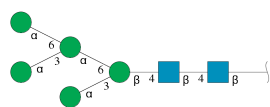
- Molecule 3 is an oligosaccharide called alpha-D-mannopyranose-(1-6)-alpha-D-mannopyranose-(1-6)-beta-D-mannopyranose-(1-4)-2-acetamido-2-deoxy-beta-D-glucopyranose-(1-4)-2-acetamido-2-deoxy-beta-D-glucopyranose.



Mol	Chain	Residues	Atoms				ZeroOcc	AltConf	Trace
3	H	5	Total	C	N	O	0	0	0
			61	34	2	25			
3	I	5	Total	C	N	O	0	0	0
			61	34	2	25			
3	K	5	Total	C	N	O	0	0	0
			61	34	2	25			

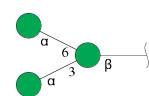
- Molecule 4 is an oligosaccharide called alpha-D-mannopyranose-(1-3)-[alpha-D-mannopyranose-(1-6)]beta-D-mannopyranose-(1-4)-2-acetamido-2-deoxy-beta-D-glucopyranose.

ose-(1-6)]alpha-D-mannopyranose-(1-6)-[alpha-D-mannopyranose-(1-3)]beta-D-mannopyranose-(1-4)-2-acetamido-2-deoxy-beta-D-glucopyranose-(1-4)-2-acetamido-2-deoxy-beta-D-glucopyranose.



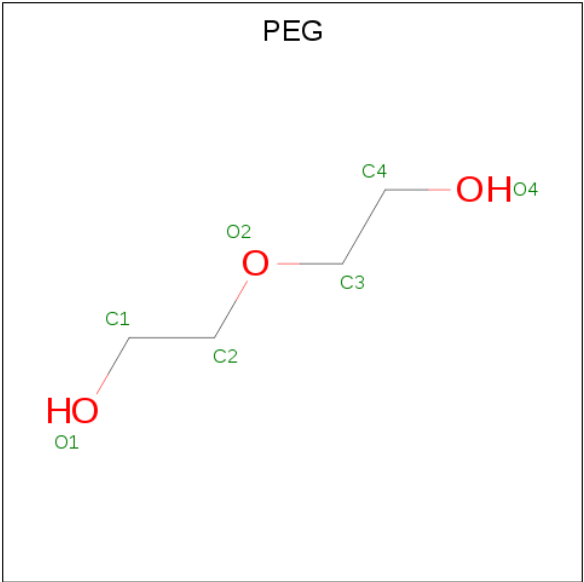
Mol	Chain	Residues	Atoms				ZeroOcc	AltConf	Trace
4	J	7	Total	C	N	O	0	0	0
			83	46	2	35			

- Molecule 5 is an oligosaccharide called alpha-D-mannopyranose-(1-3)-[alpha-D-mannopyranose-(1-6)]beta-D-mannopyranose.



Mol	Chain	Residues	Atoms			ZeroOcc	AltConf	Trace
5	L	3	Total	C	O	0	0	0
			33	18	15			

- Molecule 6 is DI(HYDROXYETHYL)ETHER (three-letter code: PEG) (formula: C<sub>4</sub>H<sub>10</sub>O<sub>3</sub>).



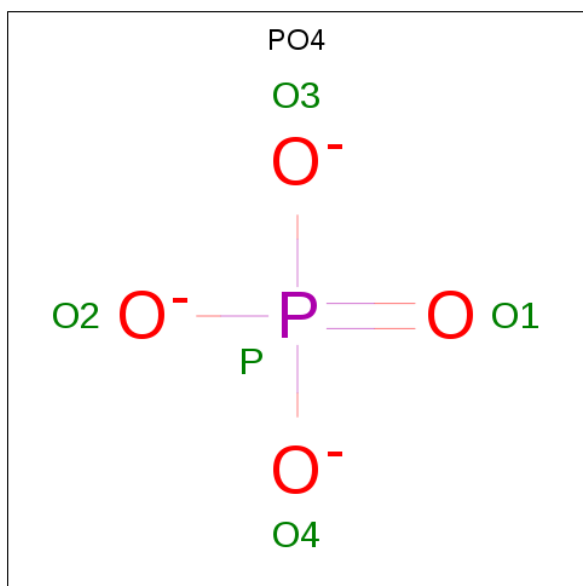
Mol	Chain	Residues	Atoms			ZeroOcc	AltConf
6	A	1	Total	C	O	0	0
			7	4	3		

Continued on next page...

Continued from previous page...

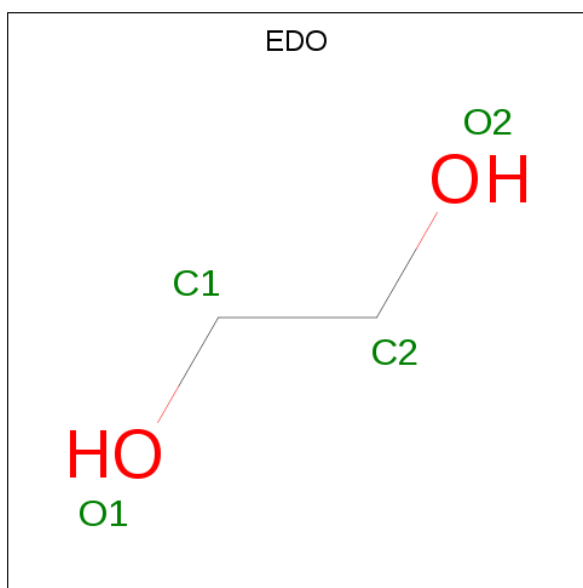
Mol	Chain	Residues	Atoms			ZeroOcc	AltConf
6	A	1	Total	C	O	0	0
			7	4	3		
6	B	1	Total	C	O	0	0
			7	4	3		
6	B	1	Total	C	O	0	0
			7	4	3		
6	B	1	Total	C	O	0	0
			6	4	2		
6	D	1	Total	C	O	0	0
			5	3	2		

- Molecule 7 is PHOSPHATE ION (three-letter code: PO4) (formula: O<sub>4</sub>P).



Mol	Chain	Residues	Atoms			ZeroOcc	AltConf
7	B	1	Total	O	P	0	0
			5	4	1		
7	C	1	Total	O	P	0	0
			5	4	1		
7	C	1	Total	O	P	0	0
			5	4	1		
7	D	1	Total	O	P	0	0
			5	4	1		
7	E	1	Total	O	P	0	0
			5	4	1		
7	F	1	Total	O	P	0	0
			5	4	1		

- Molecule 8 is 1,2-ETHANEDIOL (three-letter code: EDO) (formula:  $C_2H_6O_2$ ).



Mol	Chain	Residues	Atoms			ZeroOcc	AltConf
8	C	1	Total	C	O	0	0
			4	2	2		

- Molecule 9 is water.

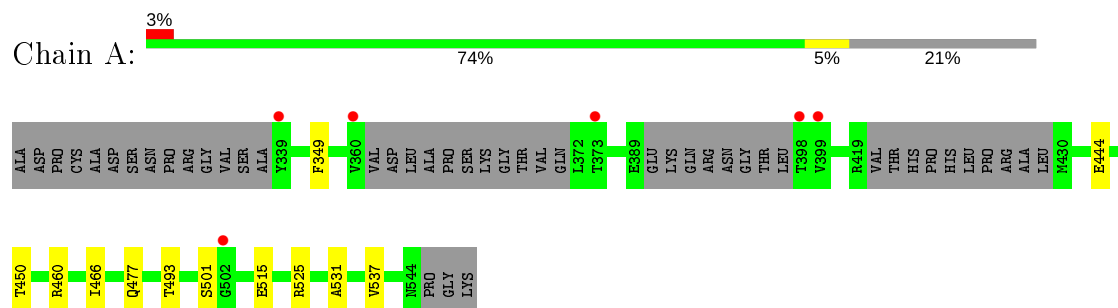
Mol	Chain	Residues	Atoms		ZeroOcc	AltConf
9	A	52	Total	O	0	0
			52	52		
9	B	51	Total	O	0	0
			51	51		
9	C	37	Total	O	0	0
			37	37		
9	D	11	Total	O	0	0
			11	11		
9	E	46	Total	O	0	0
			46	46		
9	F	16	Total	O	0	0
			16	16		



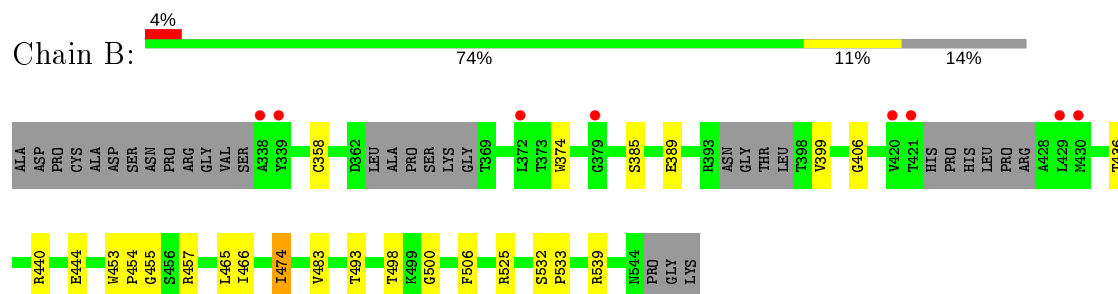
### 3 Residue-property plots [i](#)

These plots are drawn for all protein, RNA, DNA and oligosaccharide chains in the entry. The first graphic for a chain summarises the proportions of the various outlier classes displayed in the second graphic. The second graphic shows the sequence view annotated by issues in geometry and electron density. Residues are color-coded according to the number of geometric quality criteria for which they contain at least one outlier: green = 0, yellow = 1, orange = 2 and red = 3 or more. A red dot above a residue indicates a poor fit to the electron density ( $RSRZ > 2$ ). Stretches of 2 or more consecutive residues without any outlier are shown as a green connector. Residues present in the sample, but not in the model, are shown in grey.

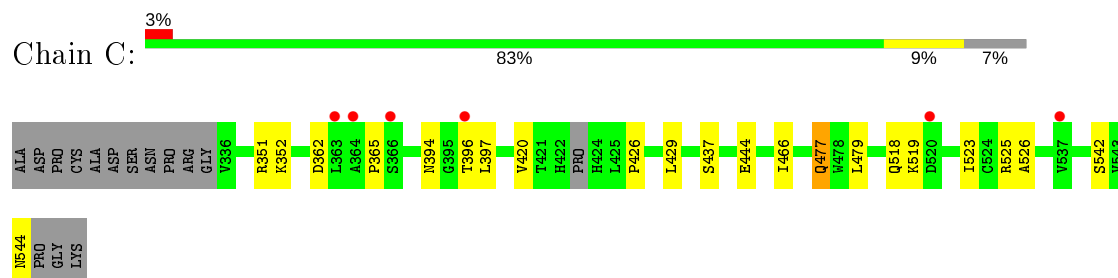
- Molecule 1: Ig epsilon chain C region



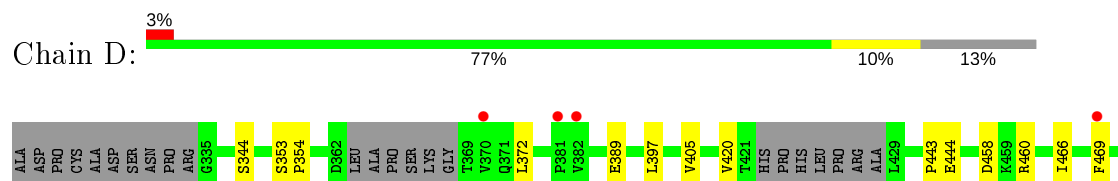
- Molecule 1: Ig epsilon chain C region

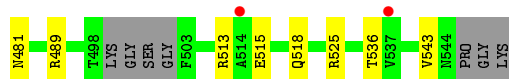


- Molecule 1: Ig epsilon chain C region

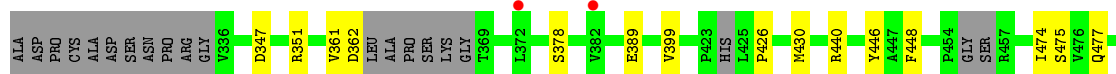
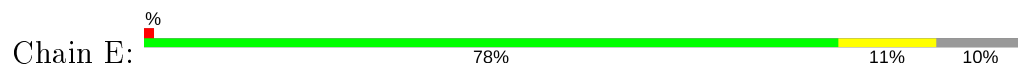


- Molecule 1: Ig epsilon chain C region

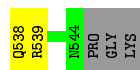
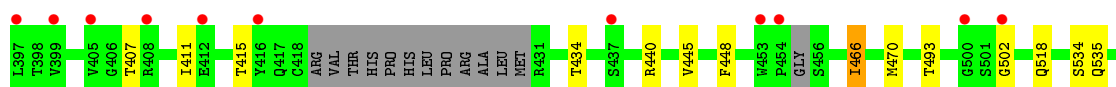
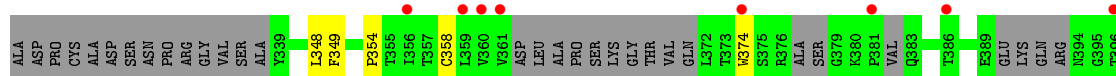




- Molecule 1: Ig epsilon chain C region



- Molecule 1: Ig epsilon chain C region



- Molecule 2: alpha-D-mannopyranose-(1-3)-[alpha-D-mannopyranose-(1-6)]beta-D-mannopyranose-(1-4)-2-acetamido-2-deoxy-beta-D-glucopyranose



- Molecule 3: alpha-D-mannopyranose-(1-6)-alpha-D-mannopyranose-(1-6)-beta-D-mannopyranose-(1-4)-2-acetamido-2-deoxy-beta-D-glucopyranose-(1-4)-2-acetamido-2-deoxy-beta-D-glucopyranose

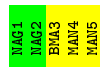


- Molecule 3: alpha-D-mannopyranose-(1-6)-alpha-D-mannopyranose-(1-6)-beta-D-mannopyranose-(1-4)-2-acetamido-2-deoxy-beta-D-glucopyranose-(1-4)-2-acetamido-2-deoxy-beta-D-glucopyranose





- Molecule 3: alpha-D-mannopyranose-(1-6)-alpha-D-mannopyranose-(1-6)-beta-D-mannopyranose-(1-4)-2-acetamido-2-deoxy-beta-D-glucopyranose-(1-4)-2-acetamido-2-deoxy-beta-D-glucopyranose



- Molecule 4: alpha-D-mannopyranose-(1-3)-[alpha-D-mannopyranose-(1-6)]alpha-D-mannopyranose-(1-6)-[alpha-D-mannopyranose-(1-3)]beta-D-mannopyranose-(1-4)-2-acetamido-2-deoxy-beta-D-glucopyranose-(1-4)-2-acetamido-2-deoxy-beta-D-glucopyranose



- Molecule 5: alpha-D-mannopyranose-(1-3)-[alpha-D-mannopyranose-(1-6)]beta-D-mannopyranose



## 4 Data and refinement statistics

Property	Value	Source
Space group	P 1	Depositor
Cell constants a, b, c, $\alpha$ , $\beta$ , $\gamma$	47.67Å 90.30Å 92.91Å 114.41° 90.63° 96.10°	Depositor
Resolution (Å)	42.22 – 2.20 76.83 – 2.20	Depositor EDS
% Data completeness (in resolution range)	84.5 (42.22-2.20) 84.6 (76.83-2.20)	Depositor EDS
$R_{merge}$	0.13	Depositor
$R_{sym}$	(Not available)	Depositor
$\langle I/\sigma(I) \rangle$ <sup>1</sup>	2.19 (at 2.20Å)	Xtriage
Refinement program	PHENIX (1.10_2155: ???)	Depositor
R, $R_{free}$	0.213 , 0.234 0.216 , 0.236	Depositor DCC
$R_{free}$ test set	2993 reflections (4.98%)	wwPDB-VP
Wilson B-factor (Å <sup>2</sup> )	43.6	Xtriage
Anisotropy	0.411	Xtriage
Bulk solvent $k_{sol}$ (e/Å <sup>3</sup> ), $B_{sol}$ (Å <sup>2</sup> )	0.28 , 46.7	EDS
L-test for twinning <sup>2</sup>	$\langle  L  \rangle = 0.49$ , $\langle L^2 \rangle = 0.32$	Xtriage
Estimated twinning fraction	No twinning to report.	Xtriage
$F_o, F_c$ correlation	0.94	EDS
Total number of atoms	9364	wwPDB-VP
Average B, all atoms (Å <sup>2</sup> )	68.0	wwPDB-VP

Xtriage's analysis on translational NCS is as follows: *The largest off-origin peak in the Patterson function is 5.32% of the height of the origin peak. No significant pseudotranslation is detected.*

<sup>1</sup>Intensities estimated from amplitudes.

<sup>2</sup>Theoretical values of  $\langle |L| \rangle$ ,  $\langle L^2 \rangle$  for acentric reflections are 0.5, 0.333 respectively for untwinned datasets, and 0.375, 0.2 for perfectly twinned datasets.

## 5 Model quality [i](#)

### 5.1 Standard geometry [i](#)

Bond lengths and bond angles in the following residue types are not validated in this section: BMA, NAG, PO4, EDO, PEG, MAN

The Z score for a bond length (or angle) is the number of standard deviations the observed value is removed from the expected value. A bond length (or angle) with  $|Z| > 5$  is considered an outlier worth inspection. RMSZ is the root-mean-square of all Z scores of the bond lengths (or angles).

Mol	Chain	Bond lengths		Bond angles	
		RMSZ	$\# Z  > 5$	RMSZ	$\# Z  > 5$
1	A	0.25	0/1408	0.46	0/1920
1	B	0.26	0/1497	0.46	0/2044
1	C	0.25	0/1625	0.45	0/2217
1	D	0.24	0/1470	0.44	0/2010
1	E	0.25	0/1577	0.46	0/2147
1	F	0.24	0/1359	0.44	0/1851
All	All	0.25	0/8936	0.45	0/12189

There are no bond length outliers.

There are no bond angle outliers.

There are no chirality outliers.

There are no planarity outliers.

### 5.2 Too-close contacts [i](#)

In the following table, the Non-H and H(model) columns list the number of non-hydrogen atoms and hydrogen atoms in the chain respectively. The H(added) column lists the number of hydrogen atoms added and optimized by MolProbity. The Clashes column lists the number of clashes within the asymmetric unit, whereas Symm-Clashes lists symmetry related clashes.

Mol	Chain	Non-H	H(model)	H(added)	Clashes	Symm-Clashes
1	A	1366	0	1279	8	0
1	B	1463	0	1367	16	0
1	C	1588	0	1516	11	0
1	D	1440	0	1299	11	0
1	E	1544	0	1468	16	0
1	F	1331	0	1213	11	0
2	G	47	0	40	0	0

*Continued on next page...*

*Continued from previous page...*

Mol	Chain	Non-H	H(model)	H(added)	Clashes	Symm-Clashes
3	H	61	0	52	2	0
3	I	61	0	52	0	0
3	K	61	0	52	0	0
4	J	83	0	70	0	0
5	L	33	0	28	0	0
6	A	14	0	20	2	0
6	B	20	0	27	2	0
6	D	5	0	5	0	0
7	B	5	0	0	0	0
7	C	10	0	0	0	0
7	D	5	0	0	0	0
7	E	5	0	0	0	0
7	F	5	0	0	0	0
8	C	4	0	6	0	0
9	A	52	0	0	0	0
9	B	51	0	0	1	0
9	C	37	0	0	0	0
9	D	11	0	0	0	0
9	E	46	0	0	1	0
9	F	16	0	0	0	0
All	All	9364	0	8494	65	0

The all-atom clashscore is defined as the number of clashes found per 1000 atoms (including hydrogen atoms). The all-atom clashscore for this structure is 4.

All (65) close contacts within the same asymmetric unit are listed below, sorted by their clash magnitude.

Atom-1	Atom-2	Interatomic distance (Å)	Clash overlap (Å)
1:B:436:THR:O	1:B:440:ARG:NH2	2.22	0.69
1:E:448:PHE:CZ	1:F:448:PHE:HB3	2.32	0.65
1:C:479:LEU:HB2	1:C:523:ILE:HB	1.79	0.64
1:D:481:ASN:OD1	1:D:518:GLN:NE2	2.24	0.61
1:C:466:ILE:HD13	1:C:526:ALA:HB2	1.83	0.59
1:B:455:GLY:H	1:C:437:SER:HB2	1.66	0.58
1:D:372:LEU:HD22	1:D:420:VAL:HG22	1.85	0.58
1:C:420:VAL:HB	1:C:429:LEU:HB2	1.87	0.57
1:A:525[B]:ARG:HH12	6:A:606:PEG:H12	1.68	0.57
1:B:389:GLU:HG2	1:B:399:VAL:HG22	1.88	0.55
1:C:365:PRO:HB3	1:C:397:LEU:HB2	1.89	0.55
1:E:487:ASP:OD1	9:E:701:HOH:O	2.18	0.55
1:D:444:GLU:O	1:D:466:ILE:HA	2.07	0.54

*Continued on next page...*

*Continued from previous page...*

Atom-1	Atom-2	Interatomic distance (Å)	Clash overlap (Å)
1:E:446:TYR:HE2	1:E:448:PHE:CE2	2.25	0.54
1:E:347:ASP:HA	1:E:351:ARG:HB2	1.90	0.54
1:C:352:LYS:HG3	1:E:378:SER:HB3	1.92	0.51
1:A:450:THR:O	1:A:460[A]:ARG:NH1	2.44	0.50
1:B:498:THR:HG23	1:B:500:GLY:N	2.26	0.49
1:F:538:GLN:O	1:F:539:ARG:NE	2.45	0.49
1:B:453:TRP:CG	1:B:454:PRO:HD2	2.48	0.49
1:E:440:ARG:HB2	1:E:530:ALA:HB2	1.95	0.49
1:A:349:PHE:HE1	1:E:533:PRO:HG3	1.78	0.49
1:B:385:SER:H	6:B:608:PEG:H41	1.77	0.49
1:F:348:LEU:HD23	1:F:349:PHE:CZ	2.47	0.49
1:C:477:GLN:HE22	1:C:525:ARG:HE	1.61	0.48
1:E:448:PHE:CE2	1:F:448:PHE:HB3	2.49	0.47
1:C:362:ASP:O	1:C:396:THR:HG23	2.14	0.47
1:E:474:ILE:HD11	1:E:526:ALA:HB1	1.97	0.46
1:D:525:ARG:HG3	1:D:536:THR:HG23	1.98	0.46
1:E:498:THR:HG22	1:E:504:PHE:HD2	1.80	0.46
1:E:475:SER:HB2	1:E:527:VAL:HB	1.98	0.46
1:E:389:GLU:HG2	1:E:399:VAL:HG22	1.97	0.46
1:E:446:TYR:HE2	1:E:448:PHE:CZ	2.35	0.45
1:E:493:THR:HG21	1:F:493:THR:HG21	1.98	0.44
1:B:406:GLY:HA2	6:B:607:PEG:H22	2.00	0.44
1:D:466:ILE:HG22	1:D:469:PHE:CE2	2.52	0.44
1:F:445:VAL:HG22	1:F:466:ILE:HG23	1.99	0.44
1:F:407:THR:O	1:F:411:ILE:HG12	2.18	0.44
1:B:532:SER:HA	1:B:533:PRO:HA	1.70	0.43
1:A:349:PHE:CE1	1:E:533:PRO:HG3	2.52	0.43
1:B:498:THR:HG23	1:B:500:GLY:H	1.84	0.43
1:B:454:PRO:HA	1:C:437:SER:CB	2.47	0.43
1:A:493:THR:HG21	1:B:493:THR:HG21	1.99	0.43
1:F:470:MET:HG2	1:F:502:GLY:HA2	2.00	0.43
1:D:354:PRO:HG2	1:D:405:VAL:HG23	2.01	0.43
1:A:515:GLU:OE2	6:A:605:PEG:H21	2.19	0.43
1:D:443:PRO:HB2	1:D:466:ILE:HG23	2.01	0.43
1:D:460:ARG:HG2	1:D:543:VAL:HG13	2.01	0.43
1:B:525:ARG:NH2	9:B:704:HOH:O	2.39	0.43
1:D:458:ASP:OD1	1:D:513:ARG:NE	2.50	0.43
1:F:348:LEU:HD12	1:F:354:PRO:HB3	2.01	0.42
3:H:4:MAN:H62	3:H:5:MAN:H2	1.74	0.42
1:B:444:GLU:O	1:B:466:ILE:HA	2.19	0.42
1:F:415:THR:HA	1:F:434:THR:HB	2.01	0.42

*Continued on next page...*

Continued from previous page...

Atom-1	Atom-2	Interatomic distance (Å)	Clash overlap (Å)
1:E:499:LYS:HA	1:E:499:LYS:HD3	1.71	0.42
1:A:531:ALA:HB1	1:A:537:VAL:HG23	2.01	0.42
1:B:465:LEU:HD13	1:B:506:PHE:CE1	2.55	0.42
1:B:474:ILE:O	3:H:5:MAN:H62	2.18	0.42
1:D:489:ARG:NH1	1:D:515:GLU:OE1	2.43	0.42
1:C:394:ASN:OD1	1:C:396:THR:HB	2.20	0.41
1:D:389:GLU:HG2	1:D:397:LEU:HD11	2.02	0.41
1:C:444:GLU:O	1:C:466:ILE:HA	2.20	0.41
1:F:358:CYS:HB2	1:F:374:TRP:CH2	2.56	0.41
1:A:444:GLU:O	1:A:466:ILE:HA	2.22	0.40
1:B:358:CYS:HB2	1:B:374:TRP:CH2	2.56	0.40

There are no symmetry-related clashes.

## 5.3 Torsion angles [i](#)

### 5.3.1 Protein backbone [i](#)

In the following table, the Percentiles column shows the percent Ramachandran outliers of the chain as a percentile score with respect to all X-ray entries followed by that with respect to entries of similar resolution.

The Analysed column shows the number of residues for which the backbone conformation was analysed, and the total number of residues.

Mol	Chain	Analysed	Favoured	Allowed	Outliers	Percentiles	
1	A	172/223 (77%)	171 (99%)	1 (1%)	0	100	100
1	B	183/223 (82%)	178 (97%)	5 (3%)	0	100	100
1	C	204/223 (92%)	200 (98%)	3 (2%)	1 (0%)	29	31
1	D	185/223 (83%)	183 (99%)	2 (1%)	0	100	100
1	E	192/223 (86%)	188 (98%)	3 (2%)	1 (0%)	29	31
1	F	162/223 (73%)	157 (97%)	5 (3%)	0	100	100
All	All	1098/1338 (82%)	1077 (98%)	19 (2%)	2 (0%)	47	55

All (2) Ramachandran outliers are listed below:

Mol	Chain	Res	Type
1	C	426	PRO
1	E	426	PRO



### 5.3.2 Protein sidechains ⓘ

In the following table, the Percentiles column shows the percent sidechain outliers of the chain as a percentile score with respect to all X-ray entries followed by that with respect to entries of similar resolution.

The Analysed column shows the number of residues for which the sidechain conformation was analysed, and the total number of residues.

Mol	Chain	Analysed	Rotameric	Outliers	Percentiles	
1	A	145/195 (74%)	143 (99%)	2 (1%)	67	80
1	B	152/195 (78%)	148 (97%)	4 (3%)	46	58
1	C	167/195 (86%)	161 (96%)	6 (4%)	35	45
1	D	145/195 (74%)	143 (99%)	2 (1%)	67	80
1	E	165/195 (85%)	160 (97%)	5 (3%)	41	53
1	F	137/195 (70%)	132 (96%)	5 (4%)	35	45
All	All	911/1170 (78%)	887 (97%)	24 (3%)	46	58

All (24) residues with a non-rotameric sidechain are listed below:

Mol	Chain	Res	Type
1	A	477	GLN
1	A	501	SER
1	B	457	ARG
1	B	474	ILE
1	B	483	VAL
1	B	539	ARG
1	C	351	ARG
1	C	477	GLN
1	C	518	GLN
1	C	519	LYS
1	C	542	SER
1	C	544	ASN
1	D	344	SER
1	D	353	SER
1	E	361	VAL
1	E	362	ASP
1	E	430	MET
1	E	477	GLN
1	E	518	GLN
1	F	440	ARG
1	F	466	ILE
1	F	518	GLN

*Continued on next page...*

*Continued from previous page...*

Mol	Chain	Res	Type
1	F	534	SER
1	F	535	GLN

Some sidechains can be flipped to improve hydrogen bonding and reduce clashes. There are no such sidechains identified.

### 5.3.3 RNA ⓘ

There are no RNA molecules in this entry.

## 5.4 Non-standard residues in protein, DNA, RNA chains ⓘ

There are no non-standard protein/DNA/RNA residues in this entry.

## 5.5 Carbohydrates ⓘ

29 monosaccharides are modelled in this entry.

In the following table, the Counts columns list the number of bonds (or angles) for which Mogul statistics could be retrieved, the number of bonds (or angles) that are observed in the model and the number of bonds (or angles) that are defined in the Chemical Component Dictionary. The Link column lists molecule types, if any, to which the group is linked. The Z score for a bond length (or angle) is the number of standard deviations the observed value is removed from the expected value. A bond length (or angle) with  $|Z| > 2$  is considered an outlier worth inspection. RMSZ is the root-mean-square of all Z scores of the bond lengths (or angles).

Mol	Type	Chain	Res	Link	Bond lengths			Bond angles		
					Counts	RMSZ	$\# Z  > 2$	Counts	RMSZ	$\# Z  > 2$
2	NAG	G	1	2	14,14,15	0.22	0	17,19,21	0.39	0
2	BMA	G	2	2	11,11,12	0.62	0	15,15,17	0.83	0
2	MAN	G	3	2	11,11,12	0.69	0	15,15,17	0.96	1 (6%)
2	MAN	G	4	2	11,11,12	0.67	0	15,15,17	1.02	2 (13%)
3	NAG	H	1	3	14,14,15	0.22	0	17,19,21	0.38	0
3	NAG	H	2	3	14,14,15	0.29	0	17,19,21	0.40	0
3	BMA	H	3	3	11,11,12	0.70	0	15,15,17	0.89	0
3	MAN	H	4	3	11,11,12	0.72	0	15,15,17	1.10	2 (13%)
3	MAN	H	5	3	11,11,12	0.66	0	15,15,17	1.04	2 (13%)
3	NAG	I	1	1,3	14,14,15	0.24	0	17,19,21	0.41	0
3	NAG	I	2	3	14,14,15	0.25	0	17,19,21	0.40	0
3	BMA	I	3	3	11,11,12	0.50	0	15,15,17	0.89	0

Mol	Type	Chain	Res	Link	Bond lengths			Bond angles		
					Counts	RMSZ	# Z  > 2	Counts	RMSZ	# Z  > 2
3	MAN	I	4	3	11,11,12	0.62	0	15,15,17	1.10	2 (13%)
3	MAN	I	5	3	11,11,12	0.75	0	15,15,17	0.86	1 (6%)
4	NAG	J	1	1,4	14,14,15	0.22	0	17,19,21	0.48	0
4	NAG	J	2	4	14,14,15	0.25	0	17,19,21	0.45	0
4	BMA	J	3	4	11,11,12	0.61	0	15,15,17	1.21	1 (6%)
4	MAN	J	4	4	11,11,12	0.71	0	15,15,17	1.14	2 (13%)
4	MAN	J	5	4	11,11,12	0.73	0	15,15,17	1.21	2 (13%)
4	MAN	J	6	4	11,11,12	0.60	0	15,15,17	1.09	2 (13%)
4	MAN	J	7	4	11,11,12	0.65	0	15,15,17	1.12	2 (13%)
3	NAG	K	1	1,3	14,14,15	0.15	0	17,19,21	0.40	0
3	NAG	K	2	3	14,14,15	0.17	0	17,19,21	0.44	0
3	BMA	K	3	3	11,11,12	0.72	0	15,15,17	1.24	1 (6%)
3	MAN	K	4	3	11,11,12	0.80	0	15,15,17	1.60	2 (13%)
3	MAN	K	5	3	11,11,12	0.61	0	15,15,17	0.96	2 (13%)
5	BMA	L	1	5	11,11,12	0.76	0	15,15,17	0.85	0
5	MAN	L	2	5	11,11,12	0.77	0	15,15,17	0.91	1 (6%)
5	MAN	L	3	5	11,11,12	0.70	0	15,15,17	0.94	2 (13%)

In the following table, the Chirals column lists the number of chiral outliers, the number of chiral centers analysed, the number of these observed in the model and the number defined in the Chemical Component Dictionary. Similar counts are reported in the Torsion and Rings columns. '-' means no outliers of that kind were identified.

Mol	Type	Chain	Res	Link	Chirals	Torsions	Rings
2	NAG	G	1	2	-	0/6/23/26	0/1/1/1
2	BMA	G	2	2	-	2/2/19/22	0/1/1/1
2	MAN	G	3	2	-	0/2/19/22	0/1/1/1
2	MAN	G	4	2	-	2/2/19/22	0/1/1/1
3	NAG	H	1	3	-	0/6/23/26	0/1/1/1
3	NAG	H	2	3	-	2/6/23/26	0/1/1/1
3	BMA	H	3	3	-	0/2/19/22	0/1/1/1
3	MAN	H	4	3	-	2/2/19/22	0/1/1/1
3	MAN	H	5	3	-	0/2/19/22	0/1/1/1
3	NAG	I	1	1,3	-	1/6/23/26	0/1/1/1
3	NAG	I	2	3	-	0/6/23/26	0/1/1/1
3	BMA	I	3	3	-	0/2/19/22	0/1/1/1
3	MAN	I	4	3	-	0/2/19/22	0/1/1/1
3	MAN	I	5	3	-	2/2/19/22	0/1/1/1
4	NAG	J	1	1,4	-	0/6/23/26	0/1/1/1

Continued on next page...

*Continued from previous page...*

Mol	Type	Chain	Res	Link	Chirals	Torsions	Rings
4	NAG	J	2	4	-	2/6/23/26	0/1/1/1
4	BMA	J	3	4	-	0/2/19/22	0/1/1/1
4	MAN	J	4	4	-	0/2/19/22	0/1/1/1
4	MAN	J	5	4	-	2/2/19/22	0/1/1/1
4	MAN	J	6	4	-	0/2/19/22	0/1/1/1
4	MAN	J	7	4	-	1/2/19/22	0/1/1/1
3	NAG	K	1	1,3	-	2/6/23/26	0/1/1/1
3	NAG	K	2	3	-	0/6/23/26	0/1/1/1
3	BMA	K	3	3	-	2/2/19/22	0/1/1/1
3	MAN	K	4	3	-	1/2/19/22	0/1/1/1
3	MAN	K	5	3	-	0/2/19/22	0/1/1/1
5	BMA	L	1	5	-	0/2/19/22	0/1/1/1
5	MAN	L	2	5	-	2/2/19/22	0/1/1/1
5	MAN	L	3	5	-	0/2/19/22	0/1/1/1

There are no bond length outliers.

All (27) bond angle outliers are listed below:

Mol	Chain	Res	Type	Atoms	Z	Observed(°)	Ideal(°)
3	K	4	MAN	C1-O5-C5	5.31	119.39	112.19
4	J	5	MAN	C1-O5-C5	3.43	116.84	112.19
3	I	4	MAN	C1-O5-C5	3.07	116.35	112.19
3	H	4	MAN	C1-O5-C5	2.95	116.18	112.19
4	J	7	MAN	C1-O5-C5	2.90	116.12	112.19
4	J	6	MAN	C1-O5-C5	2.90	116.12	112.19
3	K	3	BMA	C1-C2-C3	2.84	113.16	109.67
4	J	3	BMA	C1-C2-C3	2.71	113.00	109.67
3	H	5	MAN	C1-O5-C5	2.69	115.84	112.19
2	G	4	MAN	C1-O5-C5	2.61	115.72	112.19
4	J	4	MAN	C1-O5-C5	2.49	115.57	112.19
3	K	5	MAN	C1-O5-C5	2.45	115.51	112.19
3	H	5	MAN	O2-C2-C3	-2.32	105.50	110.14
4	J	6	MAN	O2-C2-C3	-2.29	105.56	110.14
4	J	4	MAN	O2-C2-C3	-2.28	105.58	110.14
3	I	4	MAN	O2-C2-C3	-2.25	105.64	110.14
4	J	5	MAN	O2-C2-C3	-2.24	105.64	110.14
5	L	3	MAN	C1-O5-C5	2.22	115.20	112.19
3	K	5	MAN	O2-C2-C3	-2.22	105.70	110.14
2	G	3	MAN	O2-C2-C3	-2.21	105.71	110.14
3	K	4	MAN	O2-C2-C3	-2.21	105.71	110.14
2	G	4	MAN	O2-C2-C3	-2.19	105.75	110.14

*Continued on next page...*

*Continued from previous page...*

Mol	Chain	Res	Type	Atoms	Z	Observed(°)	Ideal(°)
3	H	4	MAN	O2-C2-C3	-2.18	105.77	110.14
3	I	5	MAN	O2-C2-C3	-2.15	105.83	110.14
4	J	7	MAN	O2-C2-C3	-2.11	105.91	110.14
5	L	3	MAN	O2-C2-C3	-2.08	105.98	110.14
5	L	2	MAN	O2-C2-C3	-2.07	106.00	110.14

There are no chirality outliers.

All (23) torsion outliers are listed below:

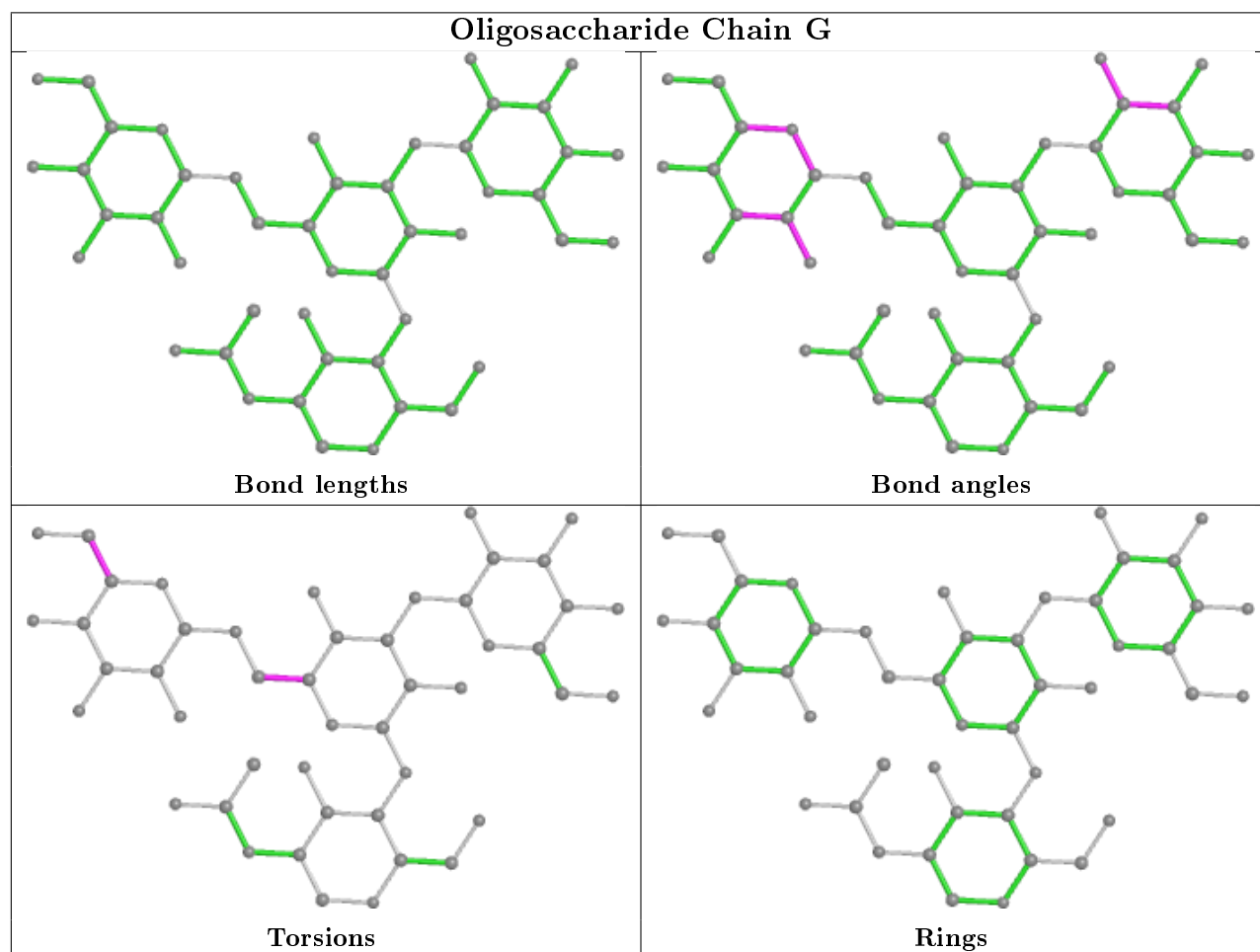
Mol	Chain	Res	Type	Atoms
3	I	5	MAN	O5-C5-C6-O6
3	H	4	MAN	O5-C5-C6-O6
3	I	5	MAN	C4-C5-C6-O6
3	H	2	NAG	O5-C5-C6-O6
3	H	2	NAG	C4-C5-C6-O6
4	J	2	NAG	O5-C5-C6-O6
3	H	4	MAN	C4-C5-C6-O6
4	J	2	NAG	C4-C5-C6-O6
3	K	3	BMA	C4-C5-C6-O6
2	G	2	BMA	C4-C5-C6-O6
3	K	4	MAN	O5-C5-C6-O6
5	L	2	MAN	C4-C5-C6-O6
3	K	1	NAG	C4-C5-C6-O6
4	J	5	MAN	C4-C5-C6-O6
2	G	2	BMA	O5-C5-C6-O6
3	K	3	BMA	O5-C5-C6-O6
3	K	1	NAG	O5-C5-C6-O6
4	J	7	MAN	C4-C5-C6-O6
5	L	2	MAN	O5-C5-C6-O6
2	G	4	MAN	C4-C5-C6-O6
2	G	4	MAN	O5-C5-C6-O6
4	J	5	MAN	O5-C5-C6-O6
3	I	1	NAG	C4-C5-C6-O6

There are no ring outliers.

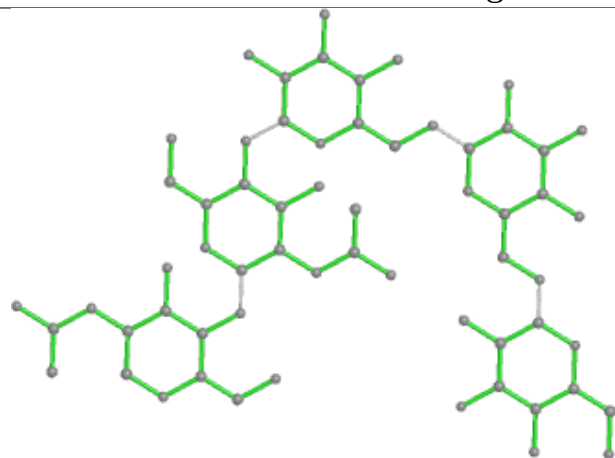
2 monomers are involved in 2 short contacts:

Mol	Chain	Res	Type	Clashes	Symm-Clashes
3	H	4	MAN	1	0
3	H	5	MAN	2	0

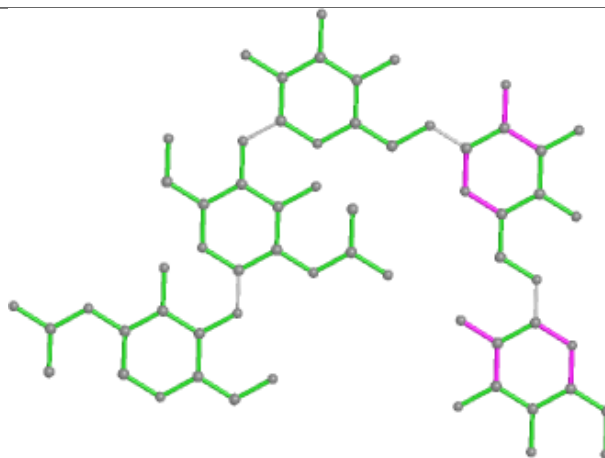
The following is a two-dimensional graphical depiction of Mogul quality analysis of bond lengths, bond angles, torsion angles, and ring geometry for oligosaccharide.



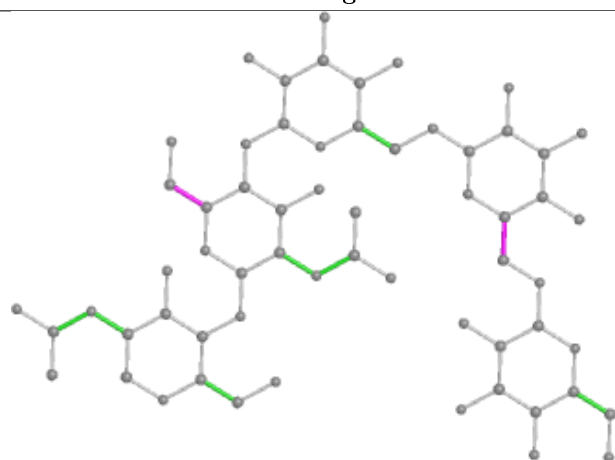
## Oligosaccharide Chain H



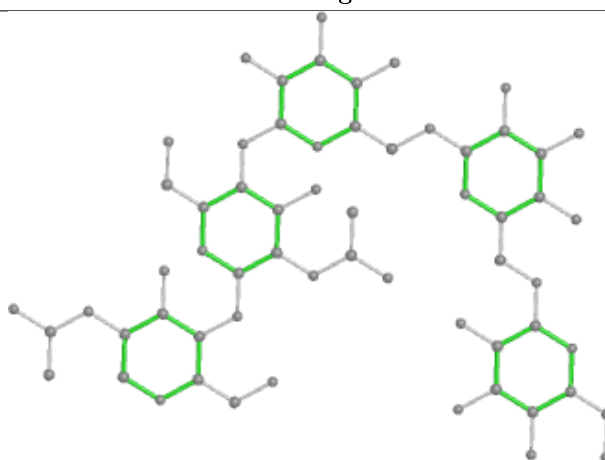
Bond lengths



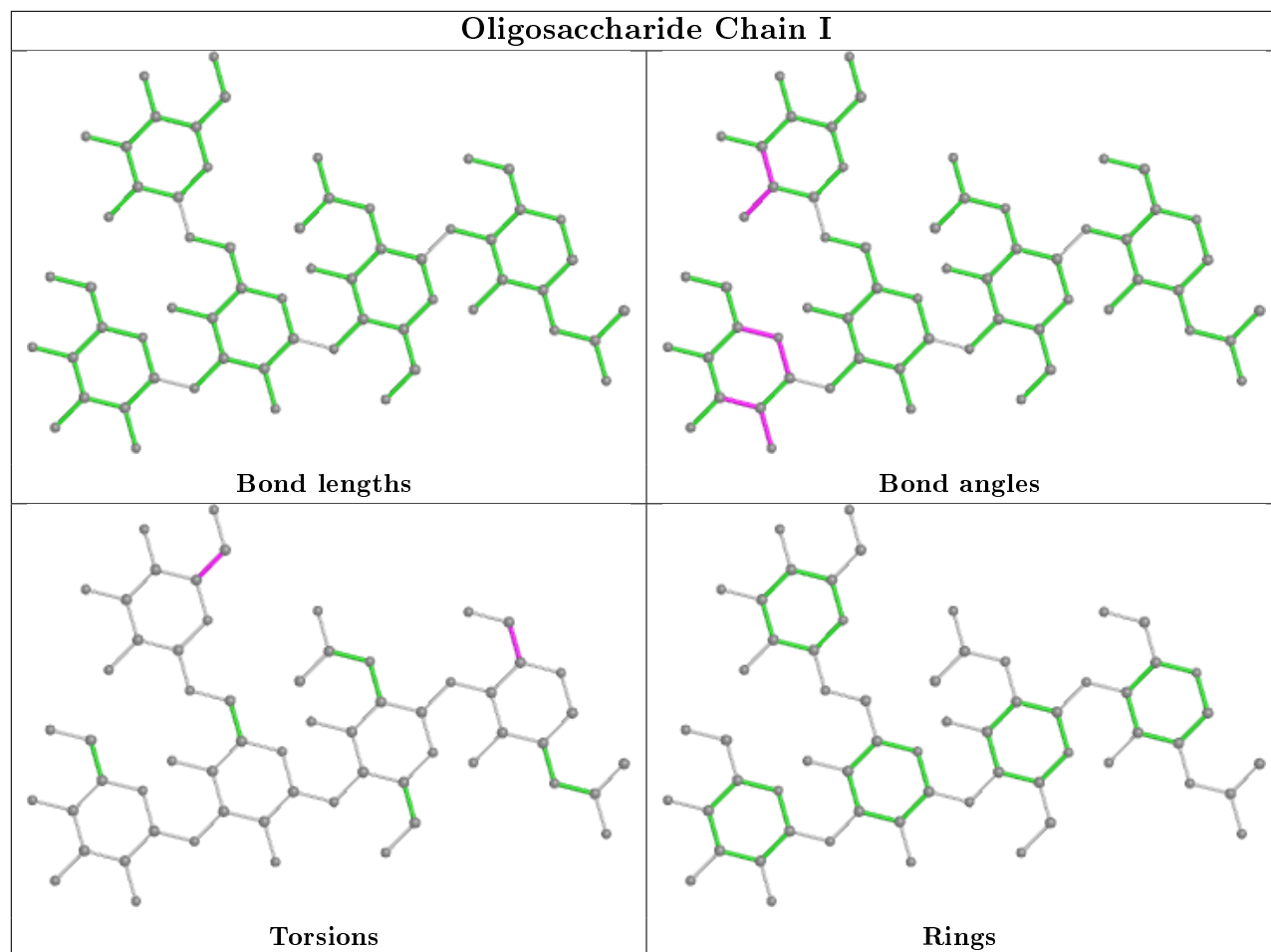
Bond angles



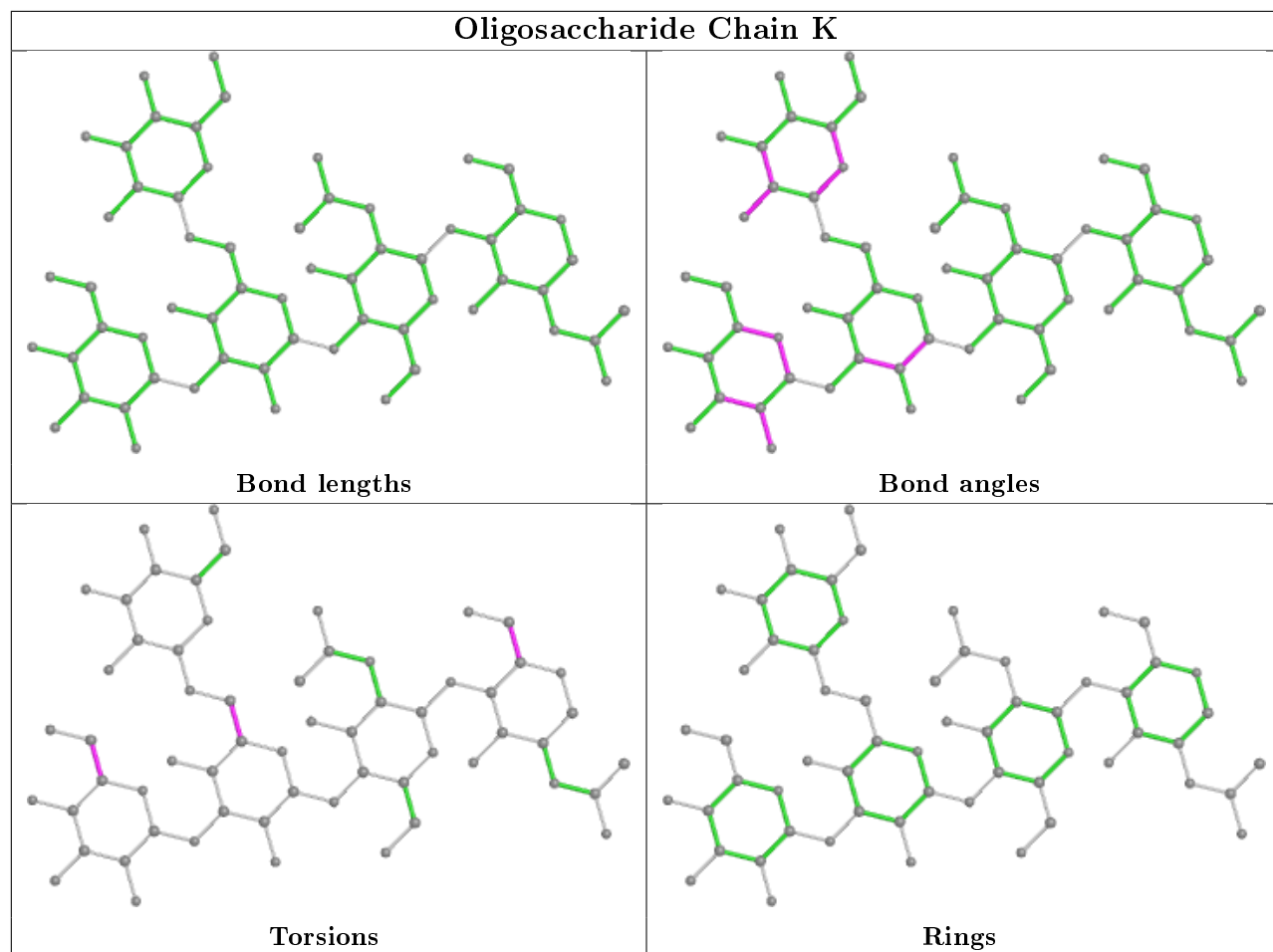
Torsions

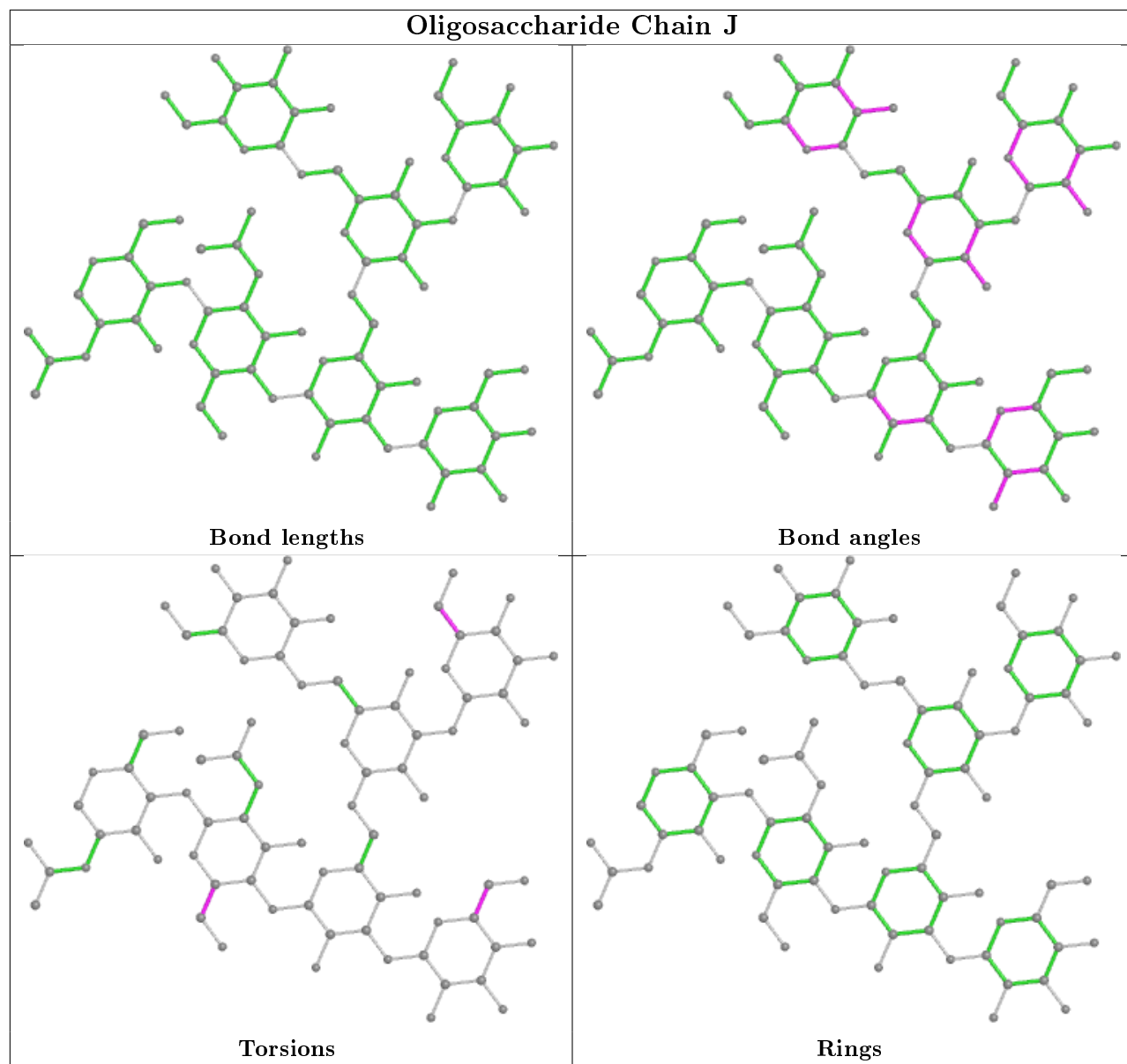


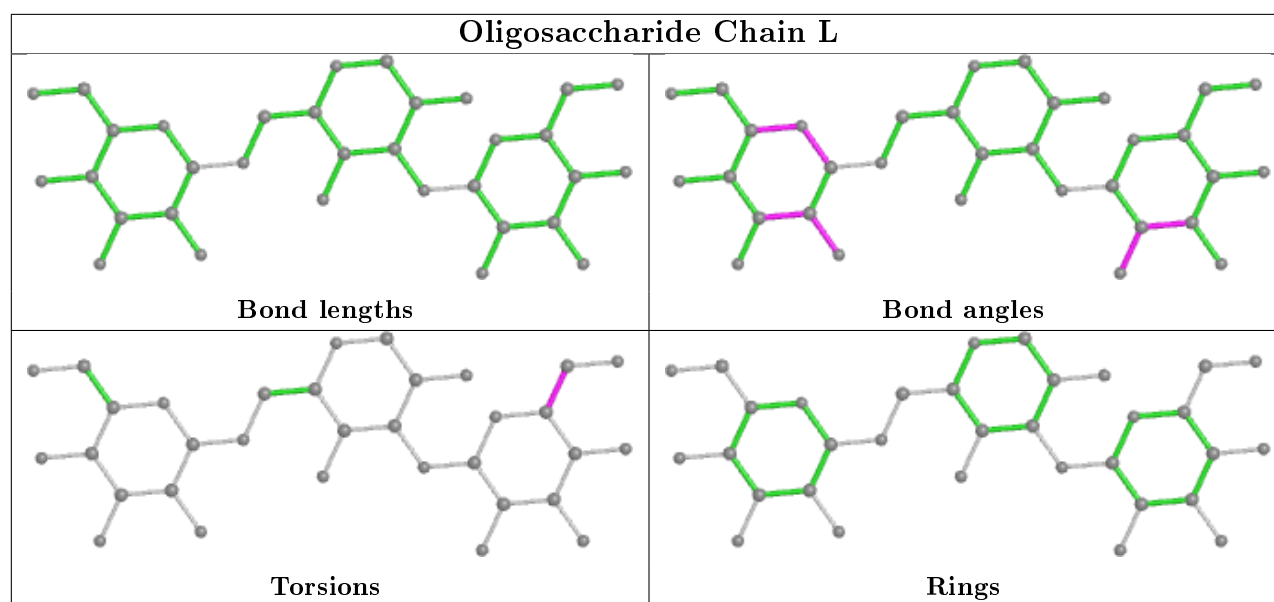
Rings











## 5.6 Ligand geometry [i](#)

13 ligands are modelled in this entry.

In the following table, the Counts columns list the number of bonds (or angles) for which Mogul statistics could be retrieved, the number of bonds (or angles) that are observed in the model and the number of bonds (or angles) that are defined in the Chemical Component Dictionary. The Link column lists molecule types, if any, to which the group is linked. The Z score for a bond length (or angle) is the number of standard deviations the observed value is removed from the expected value. A bond length (or angle) with  $|Z| > 2$  is considered an outlier worth inspection. RMSZ is the root-mean-square of all Z scores of the bond lengths (or angles).

Mol	Type	Chain	Res	Link	Bond lengths			Bond angles		
					Counts	RMSZ	$\# Z  > 2$	Counts	RMSZ	$\# Z  > 2$
6	PEG	B	606	-	6,6,6	0.83	0	5,5,5	0.27	0
6	PEG	B	607	-	6,6,6	0.82	0	5,5,5	0.25	0
7	PO4	E	606	-	4,4,4	0.98	0	6,6,6	0.48	0
8	EDO	C	606	-	3,3,3	0.47	0	2,2,2	0.34	0
7	PO4	C	608	-	4,4,4	1.02	0	6,6,6	0.43	0
6	PEG	A	606	-	6,6,6	0.83	0	5,5,5	0.21	0
7	PO4	C	607	-	4,4,4	0.91	0	6,6,6	0.41	0
7	PO4	B	609	-	4,4,4	0.95	0	6,6,6	0.38	0
7	PO4	D	609	-	4,4,4	0.91	0	6,6,6	0.44	0
6	PEG	D	608	-	4,4,6	0.81	0	3,3,5	0.29	0
6	PEG	A	605	-	6,6,6	0.82	0	5,5,5	0.22	0
7	PO4	F	604	-	4,4,4	0.93	0	6,6,6	0.43	0
6	PEG	B	608	-	5,5,6	0.84	0	4,4,5	0.27	0

In the following table, the Chirals column lists the number of chiral outliers, the number of chiral

centers analysed, the number of these observed in the model and the number defined in the Chemical Component Dictionary. Similar counts are reported in the Torsion and Rings columns. '-' means no outliers of that kind were identified.

Mol	Type	Chain	Res	Link	Chirals	Torsions	Rings
6	PEG	B	606	-	-	2/4/4/4	-
6	PEG	B	607	-	-	2/4/4/4	-
8	EDO	C	606	-	-	1/1/1/1	-
6	PEG	A	606	-	-	4/4/4/4	-
6	PEG	D	608	-	-	2/2/2/4	-
6	PEG	A	605	-	-	2/4/4/4	-
6	PEG	B	608	-	-	2/3/3/4	-

There are no bond length outliers.

There are no bond angle outliers.

There are no chirality outliers.

All (15) torsion outliers are listed below:

Mol	Chain	Res	Type	Atoms
6	D	608	PEG	O2-C3-C4-O4
8	C	606	EDO	O1-C1-C2-O2
6	B	608	PEG	O2-C3-C4-O4
6	A	606	PEG	O2-C3-C4-O4
6	D	608	PEG	C4-C3-O2-C2
6	B	606	PEG	C1-C2-O2-C3
6	A	606	PEG	C4-C3-O2-C2
6	B	607	PEG	C4-C3-O2-C2
6	B	606	PEG	O2-C3-C4-O4
6	A	605	PEG	O2-C3-C4-O4
6	A	605	PEG	C4-C3-O2-C2
6	B	607	PEG	O1-C1-C2-O2
6	A	606	PEG	O1-C1-C2-O2
6	A	606	PEG	C1-C2-O2-C3
6	B	608	PEG	C1-C2-O2-C3

There are no ring outliers.

4 monomers are involved in 4 short contacts:

Mol	Chain	Res	Type	Clashes	Symm-Clashes
6	B	607	PEG	1	0
6	A	606	PEG	1	0

*Continued on next page...*

*Continued from previous page...*

Mol	Chain	Res	Type	Clashes	Symm-Clashes
6	A	605	PEG	1	0
6	B	608	PEG	1	0

## 5.7 Other polymers [i](#)

There are no such residues in this entry.

## 5.8 Polymer linkage issues [i](#)

There are no chain breaks in this entry.

## 6 Fit of model and data

### 6.1 Protein, DNA and RNA chains

In the following table, the column labelled ‘#RSRZ> 2’ contains the number (and percentage) of RSRZ outliers, followed by percent RSRZ outliers for the chain as percentile scores relative to all X-ray entries and entries of similar resolution. The OWAB column contains the minimum, median, 95<sup>th</sup> percentile and maximum values of the occupancy-weighted average B-factor per residue. The column labelled ‘Q< 0.9’ lists the number of (and percentage) of residues with an average occupancy less than 0.9.

Mol	Chain	Analysed	<RSRZ>	#RSRZ>2			OWAB(Å <sup>2</sup> )	Q<0.9
1	A	177/223 (79%)	0.05	6 (3%)	45	43	24, 54, 104, 119	0
1	B	191/223 (85%)	0.03	8 (4%)	36	34	25, 54, 103, 130	0
1	C	208/223 (93%)	0.04	6 (2%)	51	49	36, 63, 113, 155	0
1	D	193/223 (86%)	0.30	6 (3%)	49	47	49, 79, 114, 133	0
1	E	200/223 (89%)	0.11	2 (1%)	82	81	32, 64, 112, 160	0
1	F	176/223 (78%)	0.56	19 (10%)	5	5	41, 77, 142, 157	0
All	All	1145/1338 (85%)	0.18	47 (4%)	37	35	24, 65, 118, 160	0

All (47) RSRZ outliers are listed below:

Mol	Chain	Res	Type	RSRZ
1	F	374	TRP	6.9
1	B	429	LEU	5.0
1	C	396	THR	4.7
1	C	363	LEU	4.7
1	F	397	LEU	4.2
1	A	398	THR	4.0
1	F	500	GLY	3.9
1	F	361	VAL	3.5
1	D	381	PRO	3.2
1	F	399	VAL	3.2
1	F	412	GLU	3.2
1	F	408	ARG	3.1
1	D	537	VAL	3.0
1	A	339	TYR	2.9
1	C	364	ALA	2.9
1	F	356	ILE	2.8
1	A	360	VAL	2.8
1	D	382	VAL	2.7
1	B	372	LEU	2.7

*Continued on next page...*

*Continued from previous page...*

Mol	Chain	Res	Type	RSRZ
1	F	416	TYR	2.6
1	F	453	TRP	2.6
1	C	366	SER	2.6
1	C	537	VAL	2.6
1	F	502	GLY	2.6
1	F	386	THR	2.5
1	D	370	VAL	2.5
1	D	469	PHE	2.4
1	D	514	ALA	2.4
1	B	379	GLY	2.4
1	B	338	ALA	2.4
1	B	421	THR	2.4
1	F	396	THR	2.4
1	F	381	PRO	2.3
1	F	360	VAL	2.3
1	A	502	GLY	2.3
1	F	359	LEU	2.3
1	B	430	MET	2.2
1	F	405	VAL	2.2
1	E	382	VAL	2.2
1	F	454	PRO	2.2
1	E	372	LEU	2.2
1	B	420	VAL	2.1
1	B	339	TYR	2.1
1	C	520	ASP	2.1
1	A	373	THR	2.1
1	F	437	SER	2.1
1	A	399	VAL	2.0

## 6.2 Non-standard residues in protein, DNA, RNA chains [i](#)

There are no non-standard protein/DNA/RNA residues in this entry.

## 6.3 Carbohydrates [i](#)

In the following table, the Atoms column lists the number of modelled atoms in the group and the number defined in the chemical component dictionary. The B-factors column lists the minimum, median, 95<sup>th</sup> percentile and maximum values of B factors of atoms in the group. The column labelled 'Q< 0.9' lists the number of atoms with occupancy less than 0.9.

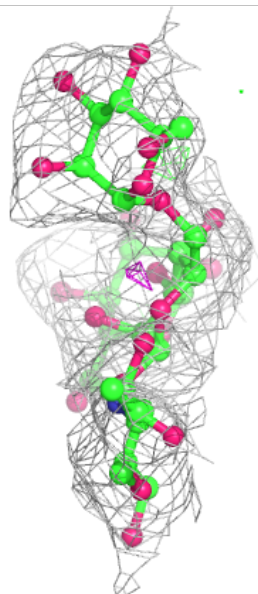
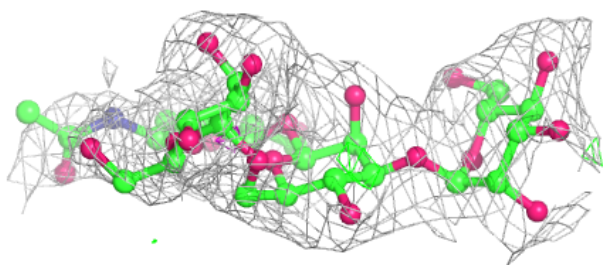
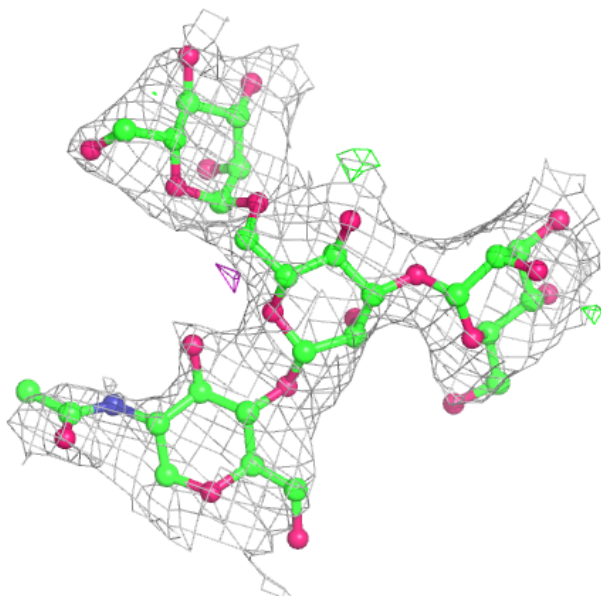
Mol	Type	Chain	Res	Atoms	RSCC	RSR	B-factors( $\text{\AA}^2$ )	Q<0.9
5	MAN	L	3	11/12	0.51	0.25	127,129,130,131	0
3	NAG	H	1	14/15	0.61	0.38	113,120,122,123	0
3	MAN	H	5	11/12	0.61	0.32	86,93,98,99	0
3	MAN	I	5	11/12	0.73	0.18	87,94,99,101	0
3	MAN	H	4	11/12	0.75	0.17	88,96,98,100	0
3	BMA	H	3	11/12	0.77	0.14	98,105,108,109	0
5	MAN	L	2	11/12	0.77	0.25	124,126,127,128	0
2	NAG	G	1	14/15	0.78	0.23	104,106,107,108	0
4	MAN	J	4	11/12	0.79	0.15	76,83,92,95	0
4	MAN	J	6	11/12	0.80	0.27	91,95,96,97	0
3	MAN	I	4	11/12	0.81	0.22	96,99,101,101	0
2	BMA	G	2	11/12	0.82	0.13	97,100,103,103	0
3	MAN	K	4	11/12	0.83	0.15	84,91,92,96	0
3	MAN	K	5	11/12	0.83	0.17	90,91,97,101	0
5	BMA	L	1	11/12	0.83	0.24	124,126,129,130	0
4	MAN	J	5	11/12	0.84	0.14	91,94,98,101	0
2	MAN	G	3	11/12	0.85	0.12	99,102,103,103	0
3	NAG	H	2	14/15	0.86	0.32	111,115,117,117	0
3	NAG	I	1	14/15	0.86	0.30	67,78,83,84	0
2	MAN	G	4	11/12	0.86	0.12	90,94,96,98	0
4	MAN	J	7	11/12	0.87	0.27	83,87,90,90	0
3	NAG	K	2	14/15	0.89	0.13	82,88,91,91	0
4	NAG	J	1	14/15	0.89	0.13	51,64,76,79	0
3	BMA	K	3	11/12	0.90	0.10	84,87,89,91	0
4	BMA	J	3	11/12	0.90	0.13	65,68,75,82	0
3	NAG	K	1	14/15	0.90	0.21	75,85,92,96	0
3	BMA	I	3	11/12	0.90	0.12	85,91,94,94	0
4	NAG	J	2	14/15	0.91	0.12	65,69,77,79	0
3	NAG	I	2	14/15	0.92	0.13	65,75,79,81	0

The following is a graphical depiction of the model fit to experimental electron density for oligosaccharide. Each fit is shown from different orientation to approximate a three-dimensional view.



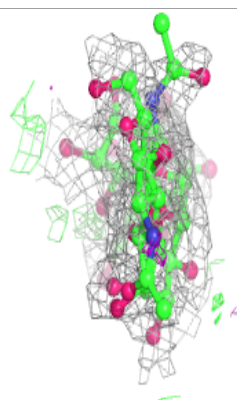
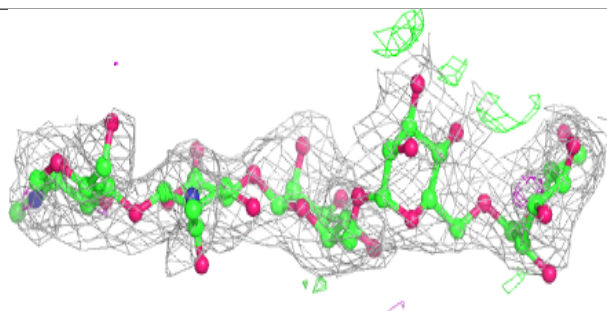
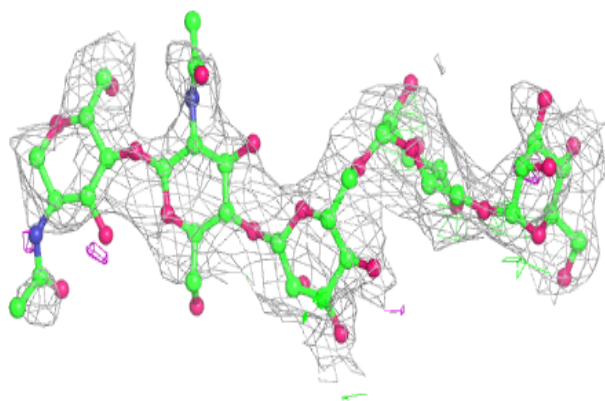
**Electron density around Chain G:**

$2mF_o-DF_c$  (at 0.7 rmsd) in gray  
 $mF_o-DF_c$  (at 3 rmsd) in purple (negative)  
and green (positive)



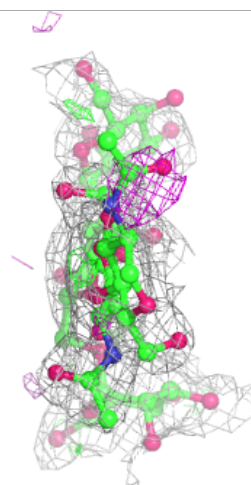
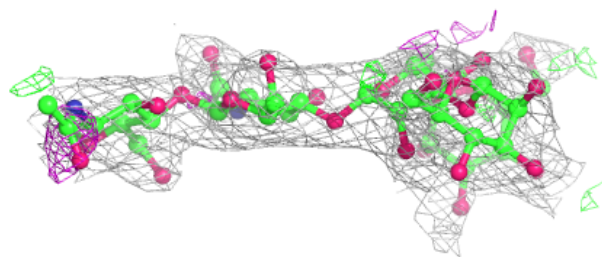
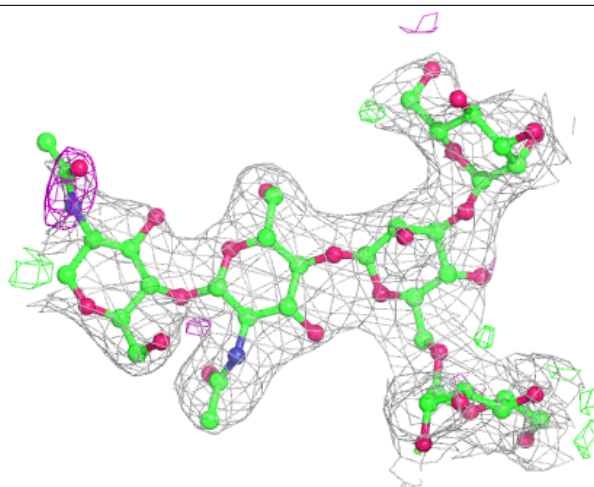
**Electron density around Chain H:**

$2mF_o - DF_c$  (at 0.7 rmsd) in gray  
 $mF_o - DF_c$  (at 3 rmsd) in purple (negative)  
and green (positive)



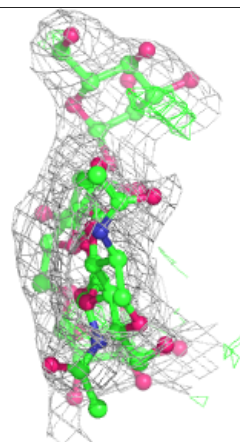
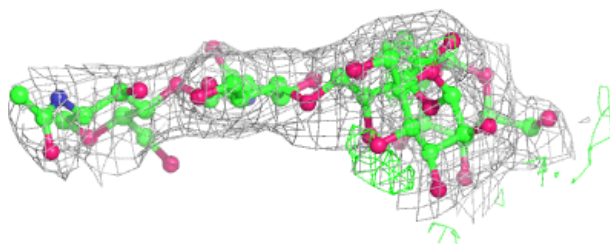
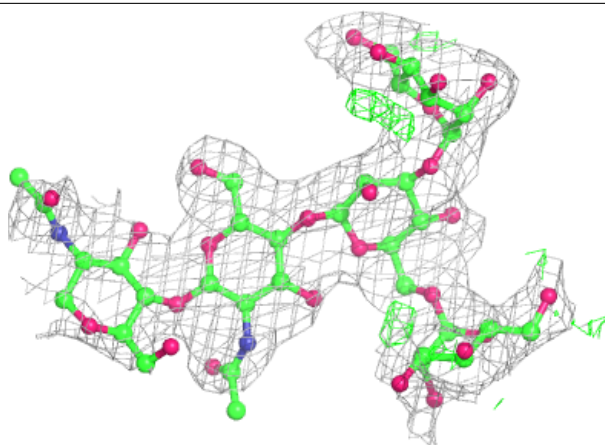
**Electron density around Chain I:**

$2mF_o-DF_c$  (at 0.7 rmsd) in gray  
 $mF_o-DF_c$  (at 3 rmsd) in purple (negative)  
and green (positive)

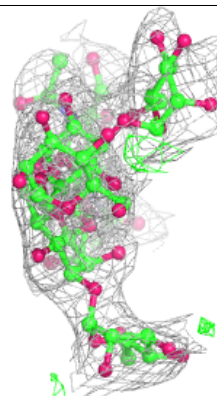
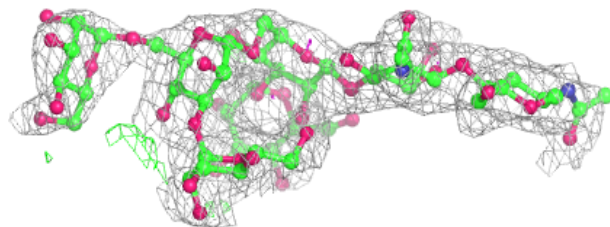
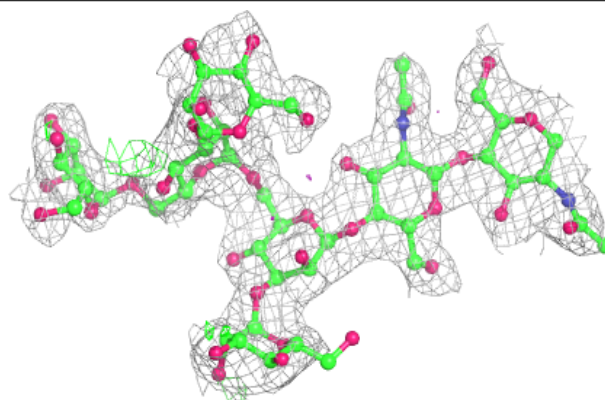


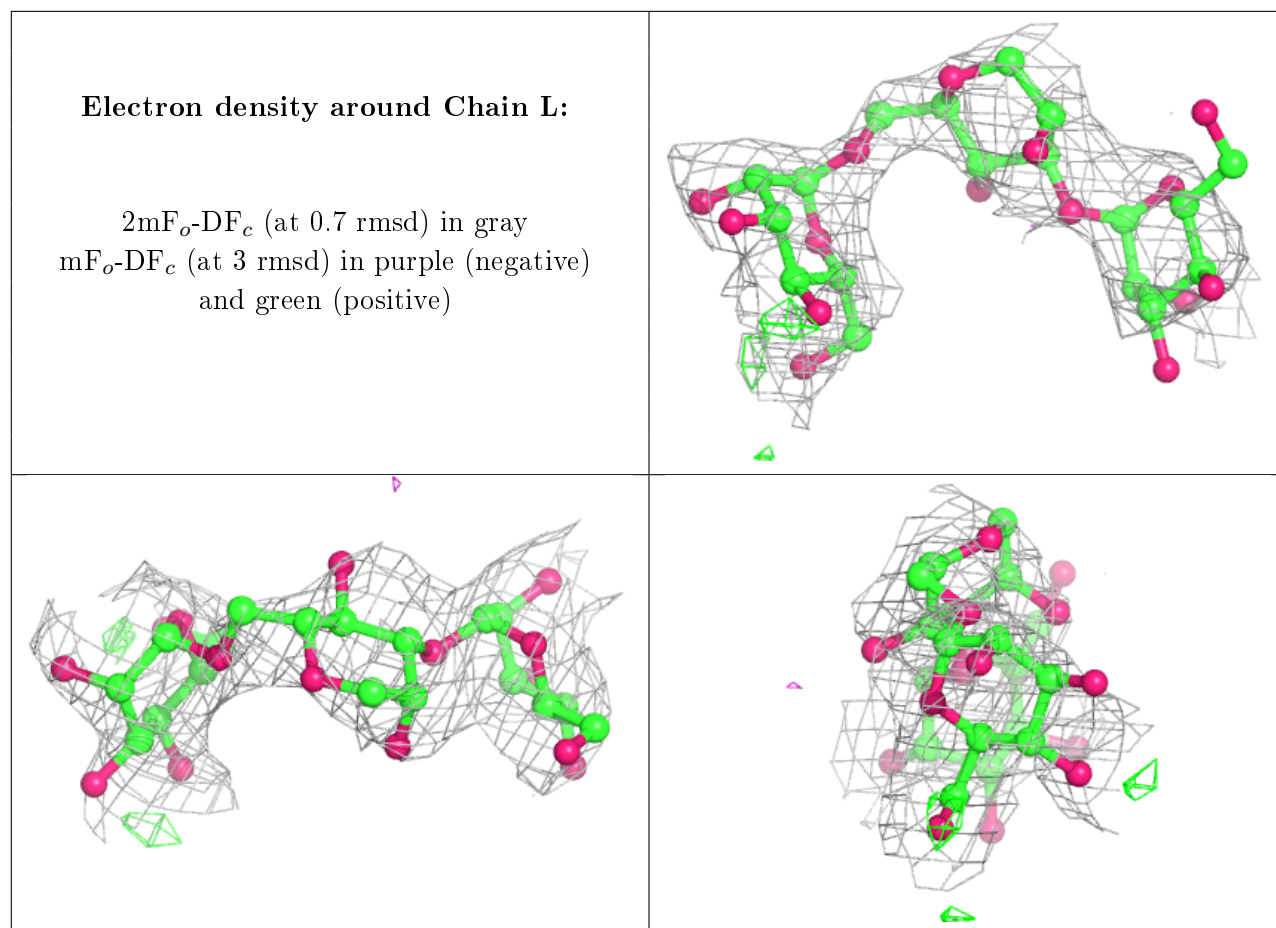
**Electron density around Chain K:**

$2mF_o-DF_c$  (at 0.7 rmsd) in gray  
 $mF_o-DF_c$  (at 3 rmsd) in purple (negative)  
and green (positive)

**Electron density around Chain J:**

$2mF_o-DF_c$  (at 0.7 rmsd) in gray  
 $mF_o-DF_c$  (at 3 rmsd) in purple (negative)  
and green (positive)





## 6.4 Ligands ⓘ

In the following table, the Atoms column lists the number of modelled atoms in the group and the number defined in the chemical component dictionary. The B-factors column lists the minimum, median, 95<sup>th</sup> percentile and maximum values of B factors of atoms in the group. The column labelled 'Q< 0.9' lists the number of atoms with occupancy less than 0.9.

Mol	Type	Chain	Res	Atoms	RSCC	RSR	B-factors(Å <sup>2</sup> )	Q<0.9
6	PEG	D	608	5/7	0.71	0.27	68,70,72,74	0
6	PEG	B	607	7/7	0.73	0.26	91,97,99,99	0
7	PO4	D	609	5/5	0.77	0.18	114,115,115,116	0
6	PEG	A	605	7/7	0.78	0.28	56,57,61,61	0
8	EDO	C	606	4/4	0.79	0.17	77,78,78,80	0
6	PEG	B	608	6/7	0.81	0.16	81,82,83,84	0
6	PEG	B	606	7/7	0.83	0.27	69,71,80,82	0
6	PEG	A	606	7/7	0.85	0.30	71,76,81,81	0
7	PO4	C	607	5/5	0.85	0.14	109,110,111,113	0
7	PO4	F	604	5/5	0.89	0.16	99,102,103,104	0
7	PO4	E	606	5/5	0.94	0.14	64,65,74,77	0
7	PO4	B	609	5/5	0.97	0.13	47,54,56,66	0

*Continued on next page...*

*Continued from previous page...*

Mol	Type	Chain	Res	Atoms	RSCC	RSR	B-factors( $\text{\AA}^2$ )	Q<0.9
7	PO4	C	608	5/5	0.97	0.13	76,77,78,78	0

## 6.5 Other polymers [i](#)

There are no such residues in this entry.