



# Full wwPDB X-ray Structure Validation Report ⓘ

May 16, 2020 – 06:22 am BST

PDB ID : 6MQQ  
Title : Citrobacter freundii F448A mutant tyrosine phenol-lyase complexed with 4-hydroxypyridine and aminoacrylate from S-ethyl-L-cysteine  
Authors : Phillips, R.S.  
Deposited on : 2018-10-10  
Resolution : 2.05 Å(reported)

This is a Full wwPDB X-ray Structure Validation Report for a publicly released PDB entry.

We welcome your comments at [validation@mail.wwpdb.org](mailto:validation@mail.wwpdb.org)

A user guide is available at

<https://www.wwpdb.org/validation/2017/XrayValidationReportHelp>

with specific help available everywhere you see the ⓘ symbol.

---

The following versions of software and data (see [references ⓘ](#)) were used in the production of this report:

MolProbity	:	4.02b-467
Mogul	:	1.8.5 (274361), CSD as541be (2020)
Xtriage (Phenix)	:	1.13
EDS	:	2.11
buster-report	:	1.1.7 (2018)
Percentile statistics	:	20191225.v01 (using entries in the PDB archive December 25th 2019)
Refmac	:	5.8.0158
CCP4	:	7.0.044 (Gargrove)
Ideal geometry (proteins)	:	Engh & Huber (2001)
Ideal geometry (DNA, RNA)	:	Parkinson et al. (1996)
Validation Pipeline (wwPDB-VP)	:	2.11

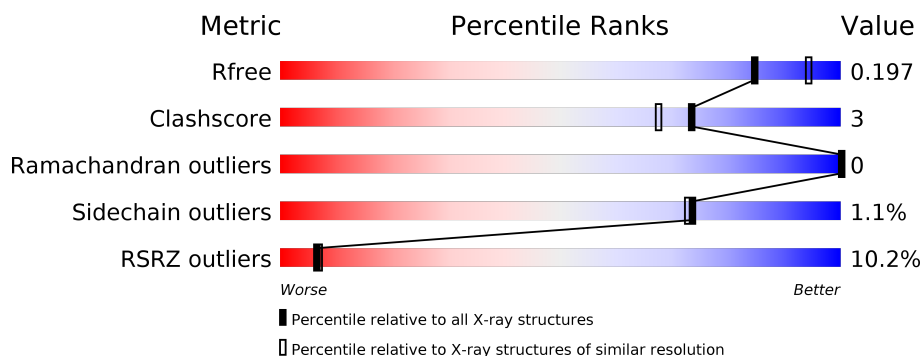
# 1 Overall quality at a glance

The following experimental techniques were used to determine the structure:

*X-RAY DIFFRACTION*

The reported resolution of this entry is 2.05 Å.

Percentile scores (ranging between 0-100) for global validation metrics of the entry are shown in the following graphic. The table shows the number of entries on which the scores are based.



Metric	Whole archive (#Entries)	Similar resolution (#Entries, resolution range(Å))
$R_{free}$	130704	1692 (2.04-2.04)
Clashscore	141614	1773 (2.04-2.04)
Ramachandran outliers	138981	1752 (2.04-2.04)
Sidechain outliers	138945	1752 (2.04-2.04)
RSRZ outliers	127900	1672 (2.04-2.04)

The table below summarises the geometric issues observed across the polymeric chains and their fit to the electron density. The red, orange, yellow and green segments on the lower bar indicate the fraction of residues that contain outliers for  $\geq 3$ , 2, 1 and 0 types of geometric quality criteria respectively. A grey segment represents the fraction of residues that are not modelled. The numeric value for each fraction is indicated below the corresponding segment, with a dot representing fractions  $\leq 5\%$ . The upper red bar (where present) indicates the fraction of residues that have poor fit to the electron density. The numeric value is given above the bar.

Mol	Chain	Length	Quality of chain
1	A	455	<div> <div>11%</div> <div> <div></div> <div>90%</div> <div>10%</div> </div> </div>
1	B	455	<div> <div>9%</div> <div> <div></div> <div>93%</div> <div>7%</div> </div> </div>

The following table lists non-polymeric compounds, carbohydrate monomers and non-standard residues in protein, DNA, RNA chains that are outliers for geometric or electron-density-fit criteria:

Mol	Type	Chain	Res	Chirality	Geometry	Clashes	Electron density
2	CQG	B	1602	-	-	-	X

## 2 Entry composition [i](#)

There are 6 unique types of molecules in this entry. The entry contains 7698 atoms, of which 0 are hydrogens and 0 are deuteriums.

In the tables below, the ZeroOcc column contains the number of atoms modelled with zero occupancy, the AltConf column contains the number of residues with at least one atom in alternate conformation and the Trace column contains the number of residues modelled with at most 2 atoms.

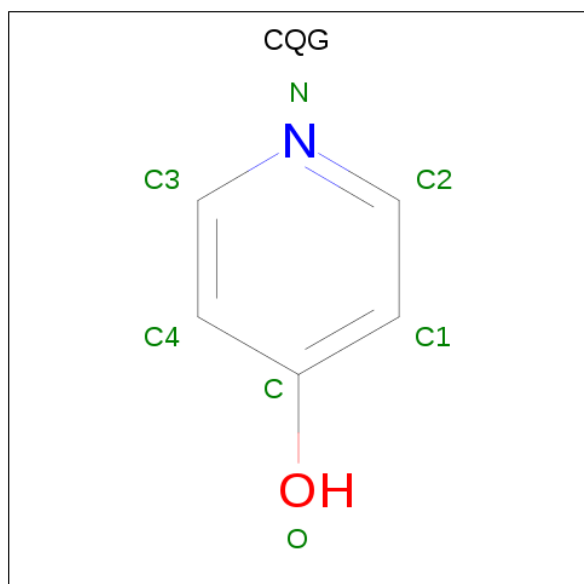
- Molecule 1 is a protein called Tyrosine phenol-lyase.

Mol	Chain	Residues	Atoms					ZeroOcc	AltConf	Trace
1	A	455	Total	C	N	O	S	0	3	0
			3615	2289	626	674	26			
1	B	455	Total	C	N	O	S	0	7	0
			3652	2307	634	684	27			

There are 4 discrepancies between the modelled and reference sequences:

Chain	Residue	Modelled	Actual	Comment	Reference
A	205	ALA	GLU	conflict	UNP P31013
A	448	ALA	PHE	engineered mutation	UNP P31013
B	205	ALA	GLU	conflict	UNP P31013
B	448	ALA	PHE	engineered mutation	UNP P31013

- Molecule 2 is pyridin-4-ol (three-letter code: CQG) (formula: C<sub>5</sub>H<sub>5</sub>NO).

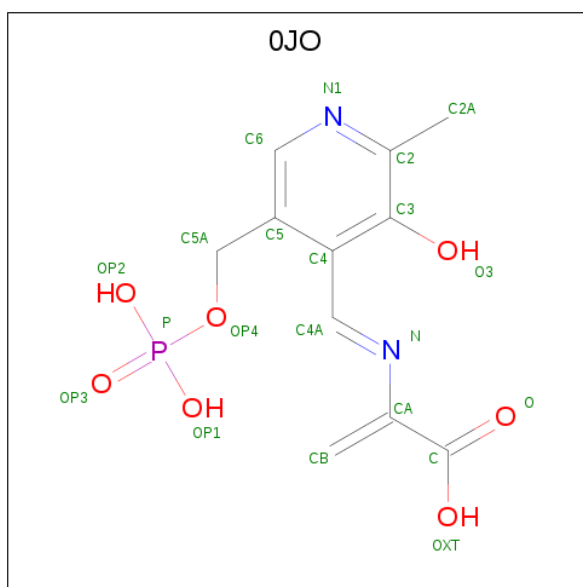


Mol	Chain	Residues	Atoms				ZeroOcc	AltConf
2	A	1	Total	C	N	O	0	0
			7	5	1	1		
2	B	1	Total	C	N	O	0	0
			7	5	1	1		
2	B	1	Total	C	N	O	0	0
			7	5	1	1		

- Molecule 3 is POTASSIUM ION (three-letter code: K) (formula: K).

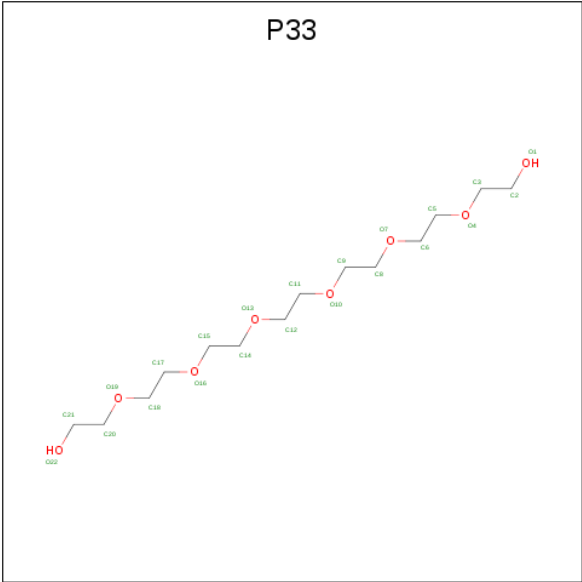
Mol	Chain	Residues	Atoms		ZeroOcc	AltConf
3	A	2	Total	K	0	0
			2	2		

- Molecule 4 is 2-[(E)-{3-hydroxy-2-methyl-5-[(phosphonooxy)methyl]pyridin-4-yl}methyldiene]amino}prop-2-enoic acid (three-letter code: OJO) (formula: C<sub>11</sub>H<sub>13</sub>N<sub>2</sub>O<sub>7</sub>P).



Mol	Chain	Residues	Atoms					ZeroOcc	AltConf
4	A	1	Total	C	N	O	P	0	0
			21	11	2	7	1		
4	B	1	Total	C	N	O	P	0	0
			21	11	2	7	1		

- Molecule 5 is 3,6,9,12,15,18-HEXAOSAICOSANE-1,20-DIOL (three-letter code: P33) (formula: C<sub>14</sub>H<sub>30</sub>O<sub>8</sub>).



Mol	Chain	Residues	Atoms			ZeroOcc	AltConf
5	B	1	Total	C	O	0	0
			22	14	8		

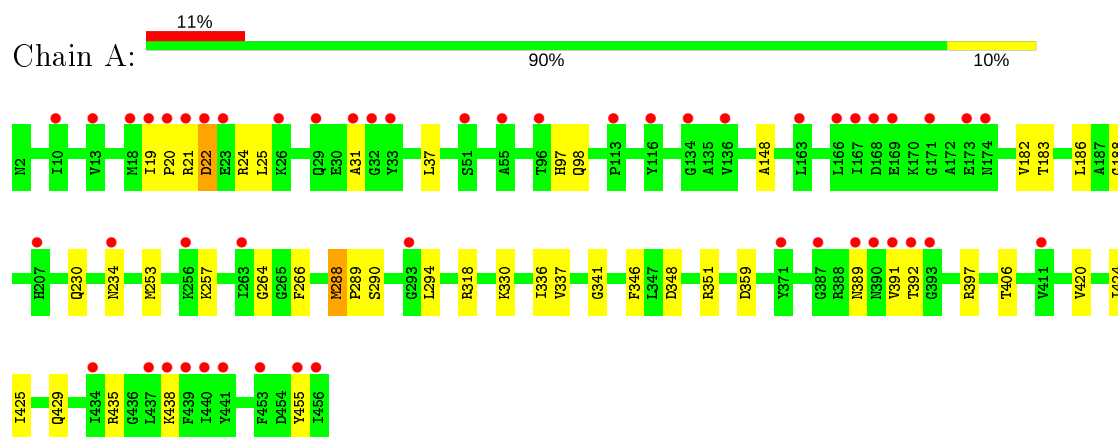
- Molecule 6 is water.

Mol	Chain	Residues	Atoms		ZeroOcc	AltConf
6	A	158	Total	O	0	1
			158	158		
6	B	186	Total	O	0	0
			186	186		

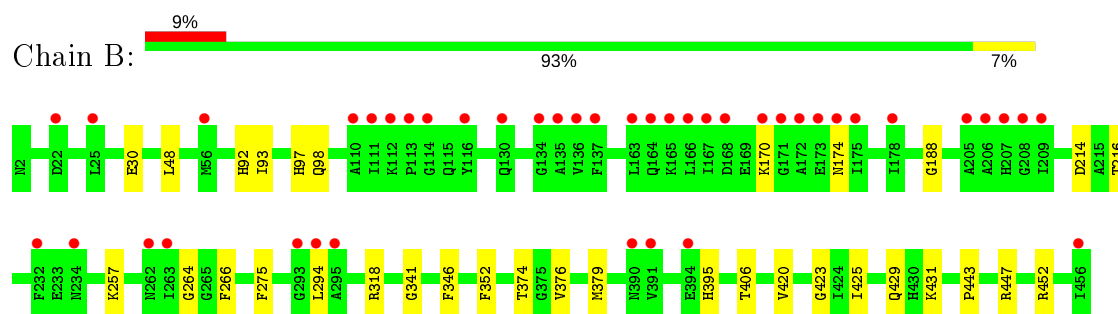
### 3 Residue-property plots [i](#)

These plots are drawn for all protein, RNA and DNA chains in the entry. The first graphic for a chain summarises the proportions of the various outlier classes displayed in the second graphic. The second graphic shows the sequence view annotated by issues in geometry and electron density. Residues are color-coded according to the number of geometric quality criteria for which they contain at least one outlier: green = 0, yellow = 1, orange = 2 and red = 3 or more. A red dot above a residue indicates a poor fit to the electron density ( $RSRZ > 2$ ). Stretches of 2 or more consecutive residues without any outlier are shown as a green connector. Residues present in the sample, but not in the model, are shown in grey.

- Molecule 1: Tyrosine phenol-lyase



- Molecule 1: Tyrosine phenol-lyase



## 4 Data and refinement statistics

Property	Value	Source
Space group	P 2 21 21	Depositor
Cell constants a, b, c, $\alpha$ , $\beta$ , $\gamma$	59.56Å 133.85Å 144.52Å 90.00° 90.00° 90.00°	Depositor
Resolution (Å)	45.96 – 2.05 45.96 – 2.05	Depositor EDS
% Data completeness (in resolution range)	99.8 (45.96-2.05) 99.8 (45.96-2.05)	Depositor EDS
$R_{merge}$	0.10	Depositor
$R_{sym}$	(Not available)	Depositor
$\langle I/\sigma(I) \rangle$ <sup>1</sup>	1.08 (at 2.05Å)	Xtriage
Refinement program	PHENIX 1.14 _3260	Depositor
R, $R_{free}$	0.176 , 0.197 0.176 , 0.197	Depositor DCC
$R_{free}$ test set	2000 reflections (2.73%)	wwPDB-VP
Wilson B-factor (Å <sup>2</sup> )	52.2	Xtriage
Anisotropy	0.143	Xtriage
Bulk solvent $k_{sol}$ (e/Å <sup>3</sup> ), $B_{sol}$ (Å <sup>2</sup> )	0.35 , 70.2	EDS
L-test for twinning <sup>2</sup>	$\langle  L  \rangle = 0.50$ , $\langle L^2 \rangle = 0.34$	Xtriage
Estimated twinning fraction	No twinning to report.	Xtriage
$F_o, F_c$ correlation	0.97	EDS
Total number of atoms	7698	wwPDB-VP
Average B, all atoms (Å <sup>2</sup> )	72.0	wwPDB-VP

Xtriage's analysis on translational NCS is as follows: *The largest off-origin peak in the Patterson function is 3.65% of the height of the origin peak. No significant pseudotranslation is detected.*

<sup>1</sup>Intensities estimated from amplitudes.

<sup>2</sup>Theoretical values of  $\langle |L| \rangle$ ,  $\langle L^2 \rangle$  for acentric reflections are 0.5, 0.333 respectively for untwinned datasets, and 0.375, 0.2 for perfectly twinned datasets.



## 5 Model quality

### 5.1 Standard geometry

Bond lengths and bond angles in the following residue types are not validated in this section: P33, 0JO, CQG, K

The Z score for a bond length (or angle) is the number of standard deviations the observed value is removed from the expected value. A bond length (or angle) with  $|Z| > 5$  is considered an outlier worth inspection. RMSZ is the root-mean-square of all Z scores of the bond lengths (or angles).

Mol	Chain	Bond lengths		Bond angles	
		RMSZ	# Z  >5	RMSZ	# Z  >5
1	A	0.28	0/3696	0.47	0/4978
1	B	0.28	0/3728	0.45	0/5020
All	All	0.28	0/7424	0.46	0/9998

There are no bond length outliers.

There are no bond angle outliers.

There are no chirality outliers.

There are no planarity outliers.

### 5.2 Too-close contacts

In the following table, the Non-H and H(model) columns list the number of non-hydrogen atoms and hydrogen atoms in the chain respectively. The H(added) column lists the number of hydrogen atoms added and optimized by MolProbity. The Clashes column lists the number of clashes within the asymmetric unit, whereas Symm-Clashes lists symmetry related clashes.

Mol	Chain	Non-H	H(model)	H(added)	Clashes	Symm-Clashes
1	A	3615	0	3572	29	0
1	B	3652	0	3587	18	0
2	A	7	0	0	0	0
2	B	14	0	0	0	0
3	A	2	0	0	0	0
4	A	21	0	9	4	0
4	B	21	0	9	2	0
5	B	22	0	30	0	0
6	A	158	0	0	2	0
6	B	186	0	0	0	0
All	All	7698	0	7207	48	0

The all-atom clashscore is defined as the number of clashes found per 1000 atoms (including hydrogen atoms). The all-atom clashscore for this structure is 3.

All (48) close contacts within the same asymmetric unit are listed below, sorted by their clash magnitude.

Atom-1	Atom-2	Interatomic distance (Å)	Clash overlap (Å)
1:A:391:VAL:HG23	1:A:392:THR:HG23	1.70	0.72
1:A:359:ASP:OD1	1:A:397:ARG:NH2	2.31	0.64
1:A:288:MET:HG3	1:A:289:PRO:HD2	1.80	0.63
1:A:22:ASP:HA	1:A:25:LEU:HD12	1.82	0.62
1:A:257:LYS:HZ3	4:A:603:OJO:H4	1.63	0.61
1:A:257:LYS:NZ	4:A:603:OJO:H4	2.18	0.59
1:A:435:ARG:HE	1:A:455:TYR:HB3	1.67	0.59
1:A:188:GLY:HA2	1:A:346:PHE:CE1	2.40	0.56
1:A:31:ALA:HB1	1:A:37:LEU:HB2	1.87	0.56
1:A:257:LYS:HZ3	4:A:603:OJO:C4A	2.18	0.56
1:B:93:ILE:HD11	1:B:266:PHE:HB2	1.88	0.56
1:B:48:LEU:HD12	1:B:379:MET:HB2	1.89	0.54
1:B:170:LYS:O	1:B:174:ASN:ND2	2.40	0.52
1:B:443:PRO:HG2	1:B:447:ARG:HA	1.91	0.51
1:B:425:ILE:O	1:B:429:GLN:HG3	2.11	0.51
1:A:21:ARG:NH1	1:A:25:LEU:HD11	2.27	0.50
1:A:19:ILE:HD12	6:A:793:HOH:O	2.11	0.50
1:A:257:LYS:NZ	4:A:603:OJO:C4A	2.74	0.50
1:B:395:HIS:CE1	1:B:447:ARG:HH12	2.29	0.50
1:A:253:MET:HG2	1:A:266:PHE:CZ	2.47	0.49
1:A:230:GLN:CD	1:A:230:GLN:H	2.16	0.48
1:A:97:HIS:CD2	1:A:98:GLN:HG2	2.49	0.48
1:B:376:VAL:HG21	1:B:420:VAL:HG22	1.95	0.48
1:B:264:GLY:HA2	1:B:294:LEU:HD21	1.95	0.47
1:A:148:ALA:HB1	1:A:337:VAL:HG22	1.97	0.47
1:A:438:LYS:HD2	1:A:438:LYS:HA	1.71	0.47
1:B:352:PHE:O	1:B:431:LYS:HD2	2.14	0.47
1:A:330:LYS:HG3	1:A:336:ILE:HD11	1.96	0.46
1:A:420:VAL:O	1:A:424[B]:ILE:HG12	2.15	0.46
1:B:97:HIS:CD2	1:B:98:GLN:HG2	2.49	0.46
1:B:92:HIS:HB3	1:B:275:PHE:CD1	2.52	0.45
1:B:214:ASP:OD1	1:B:216:THR:HG23	2.15	0.45
1:B:30:GLU:O	1:B:452:ARG:NH2	2.47	0.45
1:A:20:PRO:O	1:A:24:ARG:HG3	2.16	0.44
1:B:374:THR:CG2	1:B:423:GLY:HA3	2.48	0.43
1:A:182:VAL:HA	1:A:183:THR:HA	1.84	0.43
1:A:186:LEU:HD11	6:A:856:HOH:O	2.18	0.42

*Continued on next page...*

*Continued from previous page...*

Atom-1	Atom-2	Interatomic distance (Å)	Clash overlap (Å)
1:A:188:GLY:O	1:A:341:GLY:HA3	2.20	0.42
1:B:188:GLY:O	1:B:341:GLY:HA3	2.19	0.42
1:A:389:ASN:OD1	1:A:391:VAL:HG22	2.19	0.42
1:B:257:LYS:HZ1	4:B:1604:OJO:C4A	2.33	0.42
1:A:264:GLY:HA2	1:A:294:LEU:HD21	2.02	0.42
1:A:359:ASP:CG	1:A:397:ARG:HH22	2.23	0.41
1:A:348:ASP:OD2	1:A:351:ARG:HD3	2.20	0.41
1:B:188:GLY:HA2	1:B:346:PHE:CE1	2.56	0.41
1:A:425:ILE:O	1:A:429:GLN:HG2	2.21	0.41
4:B:1604:OJO:H3	4:B:1604:OJO:H4	1.79	0.40

There are no symmetry-related clashes.

## 5.3 Torsion angles [i](#)

### 5.3.1 Protein backbone [i](#)

In the following table, the Percentiles column shows the percent Ramachandran outliers of the chain as a percentile score with respect to all X-ray entries followed by that with respect to entries of similar resolution.

The Analysed column shows the number of residues for which the backbone conformation was analysed, and the total number of residues.

Mol	Chain	Analysed	Favoured	Allowed	Outliers	Percentiles	
1	A	456/455 (100%)	448 (98%)	8 (2%)	0	100	100
1	B	460/455 (101%)	451 (98%)	9 (2%)	0	100	100
All	All	916/910 (101%)	899 (98%)	17 (2%)	0	100	100

There are no Ramachandran outliers to report.

### 5.3.2 Protein sidechains [i](#)

In the following table, the Percentiles column shows the percent sidechain outliers of the chain as a percentile score with respect to all X-ray entries followed by that with respect to entries of similar resolution.

The Analysed column shows the number of residues for which the sidechain conformation was analysed, and the total number of residues.

Mol	Chain	Analysed	Rotameric	Outliers	Percentiles	
1	A	379/376 (101%)	373 (98%)	6 (2%)	62	59
1	B	383/376 (102%)	381 (100%)	2 (0%)	88	89
All	All	762/752 (101%)	754 (99%)	8 (1%)	73	75

All (8) residues with a non-rotameric sidechain are listed below:

Mol	Chain	Res	Type
1	A	22	ASP
1	A	234	ASN
1	A	288	MET
1	A	290	SER
1	A	318	ARG
1	A	406	THR
1	B	318	ARG
1	B	406	THR

Some sidechains can be flipped to improve hydrogen bonding and reduce clashes. There are no such sidechains identified.

### 5.3.3 RNA [i](#)

There are no RNA molecules in this entry.

## 5.4 Non-standard residues in protein, DNA, RNA chains [i](#)

There are no non-standard protein/DNA/RNA residues in this entry.

## 5.5 Carbohydrates [i](#)

There are no carbohydrates in this entry.

## 5.6 Ligand geometry [i](#)

Of 8 ligands modelled in this entry, 2 are monoatomic - leaving 6 for Mogul analysis.

In the following table, the Counts columns list the number of bonds (or angles) for which Mogul statistics could be retrieved, the number of bonds (or angles) that are observed in the model and the number of bonds (or angles) that are defined in the Chemical Component Dictionary. The Link column lists molecule types, if any, to which the group is linked. The Z score for a bond length (or angle) is the number of standard deviations the observed value is removed from the

expected value. A bond length (or angle) with  $|Z| > 2$  is considered an outlier worth inspection. RMSZ is the root-mean-square of all Z scores of the bond lengths (or angles).

Mol	Type	Chain	Res	Link	Bond lengths			Bond angles		
					Counts	RMSZ	$\# Z  > 2$	Counts	RMSZ	$\# Z  > 2$
2	CQG	A	601	-	7,7,7	3.85	5 (71%)	8,8,8	0.98	1 (12%)
4	OJO	B	1604	-	18,21,21	2.15	6 (33%)	21,30,30	1.57	3 (14%)
5	P33	B	1601	-	21,21,21	0.54	0	20,20,20	0.21	0
4	OJO	A	603	-	18,21,21	2.34	8 (44%)	21,30,30	1.60	4 (19%)
2	CQG	B	1603	-	7,7,7	3.90	5 (71%)	8,8,8	0.90	0
2	CQG	B	1602	-	7,7,7	3.88	5 (71%)	8,8,8	0.91	0

In the following table, the Chirals column lists the number of chiral outliers, the number of chiral centers analysed, the number of these observed in the model and the number defined in the Chemical Component Dictionary. Similar counts are reported in the Torsion and Rings columns. '-' means no outliers of that kind were identified.

Mol	Type	Chain	Res	Link	Chirals	Torsions	Rings
2	CQG	A	601	-	-	-	0/1/1/1
4	OJO	B	1604	-	-	2/9/15/15	0/1/1/1
4	OJO	A	603	-	-	0/9/15/15	0/1/1/1
5	P33	B	1601	-	-	9/19/19/19	-
2	CQG	B	1603	-	-	-	0/1/1/1
2	CQG	B	1602	-	-	-	0/1/1/1

All (29) bond length outliers are listed below:

Mol	Chain	Res	Type	Atoms	Z	Observed(Å)	Ideal(Å)
2	A	601	CQG	O-C	-6.81	1.21	1.37
2	B	1603	CQG	O-C	-5.92	1.23	1.37
2	B	1602	CQG	O-C	-5.90	1.23	1.37
2	B	1602	CQG	C4-C	5.50	1.49	1.38
2	B	1603	CQG	C1-C	5.48	1.49	1.38
2	B	1603	CQG	C4-C	5.47	1.49	1.38
2	B	1602	CQG	C1-C	5.38	1.49	1.38
2	A	601	CQG	C1-C	4.52	1.47	1.38
2	A	601	CQG	C4-C	4.44	1.47	1.38
4	A	603	OJO	C3-C2	-4.39	1.36	1.40
4	B	1604	OJO	OP4-C5A	-4.26	1.29	1.45
4	A	603	OJO	OP4-C5A	-4.18	1.29	1.45
4	B	1604	OJO	C4-C5	-3.79	1.37	1.42
4	B	1604	OJO	C3-C2	-3.67	1.37	1.40
4	A	603	OJO	C4-C5	-3.43	1.37	1.42

*Continued on next page...*

*Continued from previous page...*

Mol	Chain	Res	Type	Atoms	Z	Observed(Å)	Ideal(Å)
4	B	1604	OJO	C2A-C2	-3.24	1.44	1.50
4	A	603	OJO	C4-C3	-2.97	1.36	1.40
4	A	603	OJO	O3-C3	-2.96	1.30	1.37
2	A	601	CQG	C4-C3	-2.93	1.32	1.38
2	A	601	CQG	C1-C2	-2.77	1.32	1.38
4	B	1604	OJO	C4-C3	-2.72	1.36	1.40
4	A	603	OJO	C2A-C2	-2.63	1.45	1.50
4	A	603	OJO	C-CA	-2.45	1.48	1.52
4	B	1604	OJO	C5A-C5	-2.16	1.45	1.50
2	B	1602	CQG	C1-C2	-2.12	1.34	1.38
4	A	603	OJO	C4-C4A	-2.09	1.42	1.46
2	B	1603	CQG	C4-C3	-2.07	1.34	1.38
2	B	1602	CQG	C4-C3	-2.06	1.34	1.38
2	B	1603	CQG	C1-C2	-2.03	1.34	1.38

All (8) bond angle outliers are listed below:

Mol	Chain	Res	Type	Atoms	Z	Observed(°)	Ideal(°)
4	A	603	OJO	C4-C4A-N	-3.31	115.14	123.19
4	B	1604	OJO	OP4-P-OP3	-3.29	97.25	106.47
4	B	1604	OJO	OP1-P-OP4	-3.03	98.68	106.73
4	A	603	OJO	OP1-P-OP4	-3.01	98.72	106.73
4	B	1604	OJO	OP2-P-OP1	2.24	116.20	107.64
4	A	603	OJO	OP2-P-OP1	2.22	116.13	107.64
4	A	603	OJO	OP4-P-OP3	-2.11	100.56	106.47
2	A	601	CQG	C2-N-C3	2.10	121.80	116.85

There are no chirality outliers.

All (11) torsion outliers are listed below:

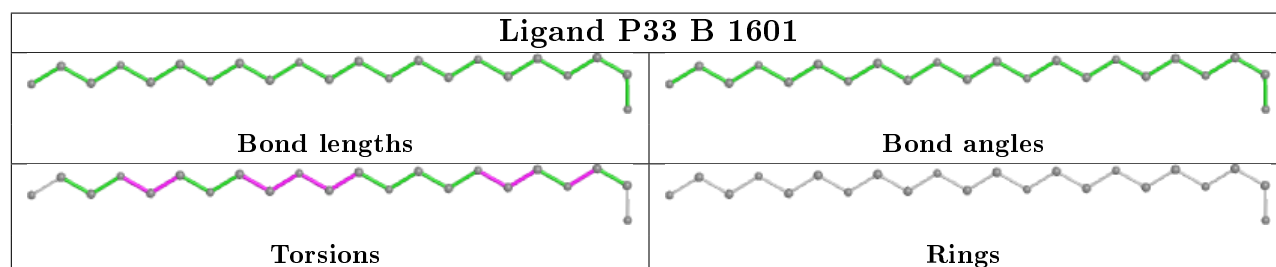
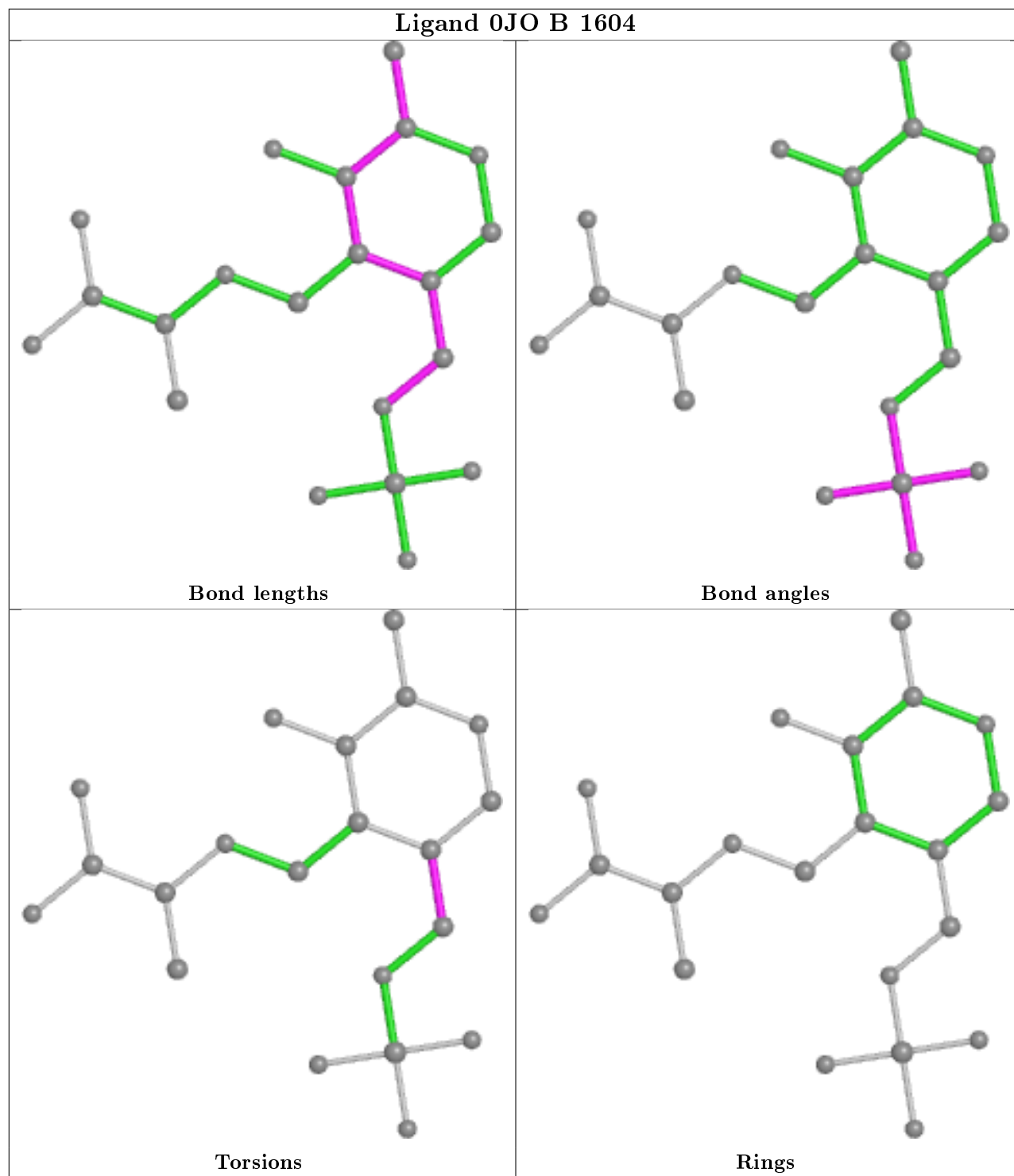
Mol	Chain	Res	Type	Atoms
5	B	1601	P33	O10-C11-C12-O13
5	B	1601	P33	O16-C17-C18-O19
4	B	1604	OJO	C6-C5-C5A-OP4
5	B	1601	P33	C18-C17-O16-C15
4	B	1604	OJO	C4-C5-C5A-OP4
5	B	1601	P33	C6-C5-O4-C3
5	B	1601	P33	O4-C5-C6-O7
5	B	1601	P33	C8-C9-O10-C11
5	B	1601	P33	C21-C20-O19-C18
5	B	1601	P33	C12-C11-O10-C9
5	B	1601	P33	O7-C8-C9-O10

There are no ring outliers.

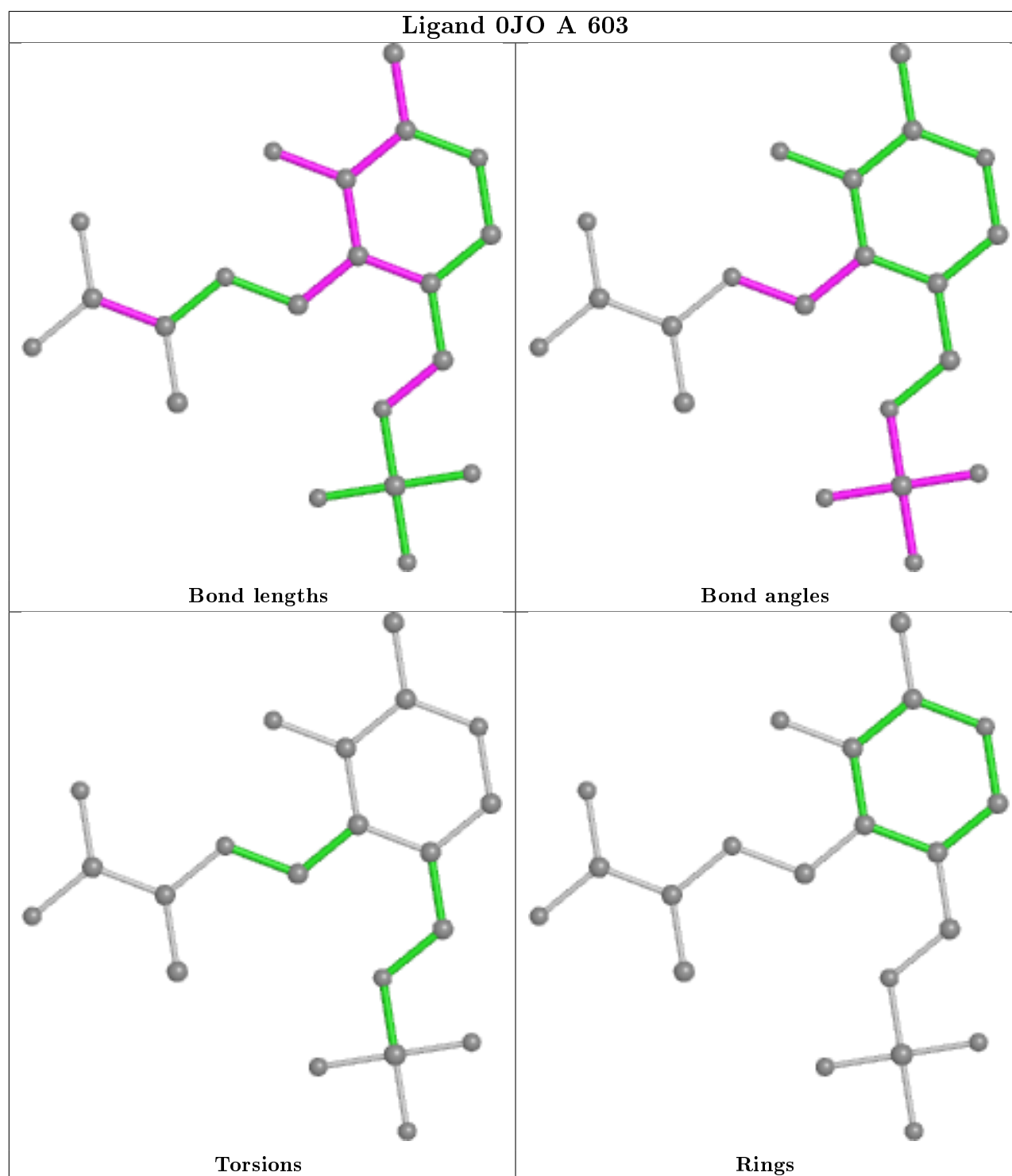
2 monomers are involved in 6 short contacts:

Mol	Chain	Res	Type	Clashes	Symm-Clashes
4	B	1604	OJO	2	0
4	A	603	OJO	4	0

The following is a two-dimensional graphical depiction of Mogul quality analysis of bond lengths, bond angles, torsion angles, and ring geometry for all instances of the Ligand of Interest. In addition, ligands with molecular weight > 250 and outliers as shown on the validation Tables will also be included. For torsion angles, if less than 5% of the Mogul distribution of torsion angles is within 10 degrees of the torsion angle in question, then that torsion angle is considered an outlier. Any bond that is central to one or more torsion angles identified as an outlier by Mogul will be highlighted in the graph. For rings, the root-mean-square deviation (RMSD) between the ring in question and similar rings identified by Mogul is calculated over all ring torsion angles. If the average RMSD is greater than 60 degrees and the minimal RMSD between the ring in question and any Mogul-identified rings is also greater than 60 degrees, then that ring is considered an outlier. The outliers are highlighted in purple. The color gray indicates Mogul did not find sufficient equivalents in the CSD to analyse the geometry.







## 5.7 Other polymers [i](#)

There are no such residues in this entry.

## 5.8 Polymer linkage issues ⓘ

There are no chain breaks in this entry.

## 6 Fit of model and data ⓘ

### 6.1 Protein, DNA and RNA chains ⓘ

In the following table, the column labelled ‘#RSRZ> 2’ contains the number (and percentage) of RSRZ outliers, followed by percent RSRZ outliers for the chain as percentile scores relative to all X-ray entries and entries of similar resolution. The OWAB column contains the minimum, median, 95<sup>th</sup> percentile and maximum values of the occupancy-weighted average B-factor per residue. The column labelled ‘Q< 0.9’ lists the number of (and percentage) of residues with an average occupancy less than 0.9.

Mol	Chain	Analysed	<RSRZ>	#RSRZ>2	OWAB(Å <sup>2</sup> )	Q<0.9
1	A	455/455 (100%)	0.41	50 (10%) 5 5	39, 68, 120, 180	0
1	B	455/455 (100%)	0.37	43 (9%) 8 9	36, 66, 111, 145	0
All	All	910/910 (100%)	0.39	93 (10%) 6 7	36, 67, 116, 180	0

All (93) RSRZ outliers are listed below:

Mol	Chain	Res	Type	RSRZ
1	A	391	VAL	10.4
1	A	456	ILE	8.2
1	A	390	ASN	6.7
1	B	172	ALA	6.4
1	B	390	ASN	5.9
1	A	389	ASN	5.0
1	A	437	LEU	4.9
1	B	173	GLU	4.8
1	B	391	VAL	4.7
1	B	165	LYS	4.3
1	A	33	TYR	4.3
1	B	456	ILE	4.2
1	B	263	ILE	4.1
1	B	130	GLN	4.0
1	B	209	ILE	4.0
1	B	166	LEU	4.0
1	A	20	PRO	3.9
1	A	22	ASP	3.9
1	A	21	ARG	3.6
1	B	168	ASP	3.6
1	B	114	GLY	3.6
1	A	234	ASN	3.6
1	A	392	THR	3.5
1	B	135	ALA	3.5

*Continued on next page...*

*Continued from previous page...*

Mol	Chain	Res	Type	RSRZ
1	A	173	GLU	3.3
1	A	263	ILE	3.3
1	A	455	TYR	3.3
1	B	206	ALA	3.3
1	A	167	ILE	3.3
1	B	134	GLY	3.2
1	B	167	ILE	3.1
1	B	175	ILE	3.1
1	A	168	ASP	3.1
1	A	18	MET	2.9
1	B	116	TYR	2.9
1	B	174	ASN	2.9
1	A	23	GLU	2.9
1	B	25	LEU	2.8
1	A	32	GLY	2.8
1	B	136	VAL	2.8
1	B	205	ALA	2.8
1	A	387	GLY	2.8
1	B	111	ILE	2.7
1	B	163	LEU	2.7
1	B	22	ASP	2.6
1	B	178	ILE	2.6
1	B	293	GLY	2.6
1	A	438	LYS	2.6
1	A	439	PHE	2.6
1	B	295	ALA	2.5
1	A	371	TYR	2.5
1	B	294	LEU	2.5
1	A	453	PHE	2.5
1	B	232	PHE	2.5
1	A	96	THR	2.5
1	A	136	VAL	2.5
1	B	113	PRO	2.5
1	A	116	TYR	2.5
1	B	137	PHE	2.5
1	A	440	ILE	2.5
1	B	110	ALA	2.4
1	A	393	GLY	2.4
1	B	208	GLY	2.4
1	B	170	LYS	2.3
1	A	293	GLY	2.3
1	A	134	GLY	2.2

*Continued on next page...*

*Continued from previous page...*

Mol	Chain	Res	Type	RSRZ
1	A	31	ALA	2.2
1	B	164	GLN	2.2
1	A	10	ILE	2.2
1	A	174	ASN	2.2
1	B	234	ASN	2.2
1	A	163	LEU	2.2
1	A	166	LEU	2.2
1	A	51	SER	2.2
1	A	19	ILE	2.2
1	A	434	ILE	2.1
1	B	394	GLU	2.1
1	A	26	LYS	2.1
1	B	56	MET	2.1
1	B	262	ASN	2.1
1	A	29	GLN	2.1
1	A	256	LYS	2.1
1	B	171	GLY	2.1
1	A	441	TYR	2.0
1	B	207	HIS	2.0
1	A	411	VAL	2.0
1	A	171	GLY	2.0
1	B	112	LYS	2.0
1	A	113	PRO	2.0
1	A	169	GLU	2.0
1	A	207	HIS	2.0
1	A	55	ALA	2.0
1	A	13	VAL	2.0

## 6.2 Non-standard residues in protein, DNA, RNA chains [i](#)

There are no non-standard protein/DNA/RNA residues in this entry.

## 6.3 Carbohydrates [i](#)

There are no carbohydrates in this entry.

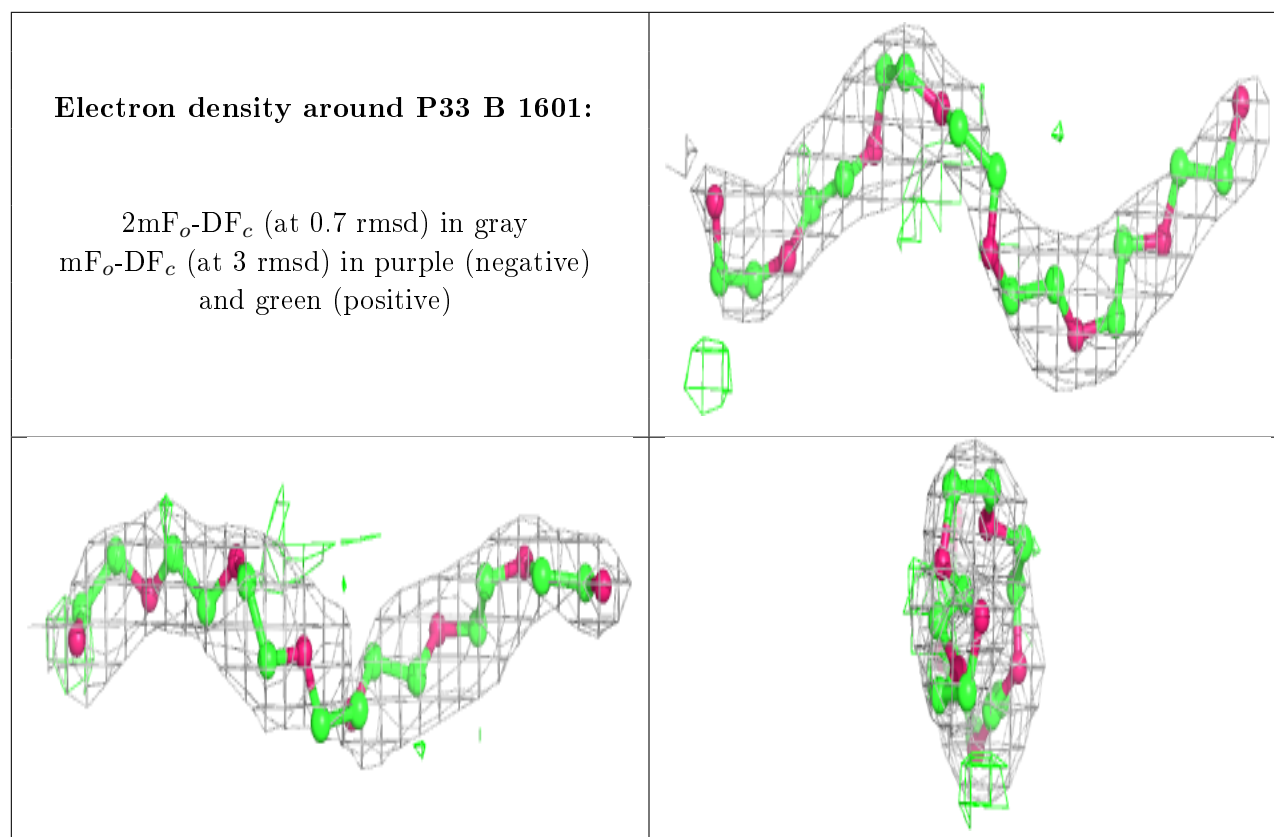
## 6.4 Ligands [i](#)

In the following table, the Atoms column lists the number of modelled atoms in the group and the number defined in the chemical component dictionary. The B-factors column lists the minimum,

median, 95<sup>th</sup> percentile and maximum values of B factors of atoms in the group. The column labelled 'Q< 0.9' lists the number of atoms with occupancy less than 0.9.

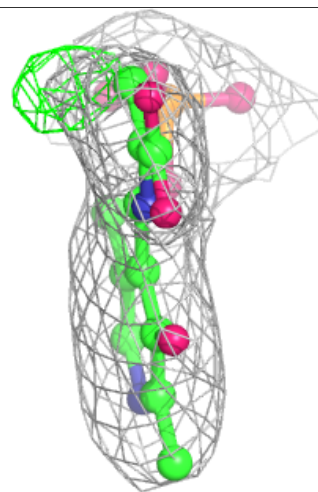
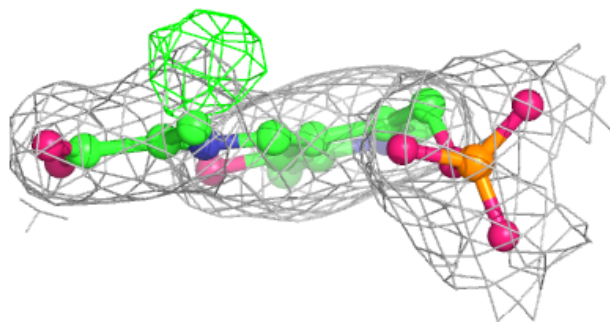
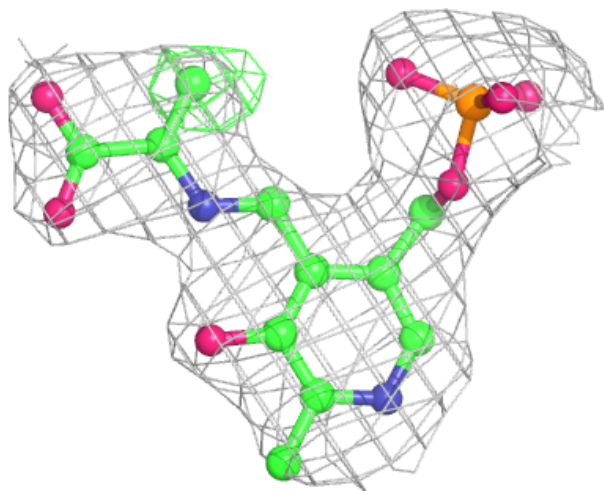
Mol	Type	Chain	Res	Atoms	RSCC	RSR	B-factors( $\text{\AA}^2$ )	Q<0.9
2	CQG	B	1603	7/7	0.77	0.17	104,106,109,109	0
2	CQG	B	1602	7/7	0.77	0.42	108,110,113,114	0
5	P33	B	1601	22/22	0.78	0.17	89,100,106,108	0
2	CQG	A	601	7/7	0.88	0.22	89,91,91,92	0
3	K	A	602	1/1	0.95	0.06	53,53,53,53	0
4	OJO	B	1604	21/21	0.96	0.14	60,77,82,83	0
4	OJO	A	603	21/21	0.98	0.12	50,58,62,63	0
3	K	A	604	1/1	0.99	0.08	50,50,50,50	0

The following is a graphical depiction of the model fit to experimental electron density of all instances of the Ligand of Interest. In addition, ligands with molecular weight > 250 and outliers as shown on the geometry validation Tables will also be included. Each fit is shown from different orientation to approximate a three-dimensional view.



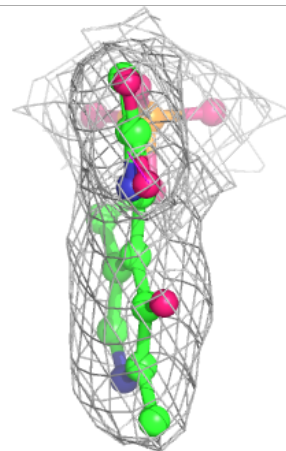
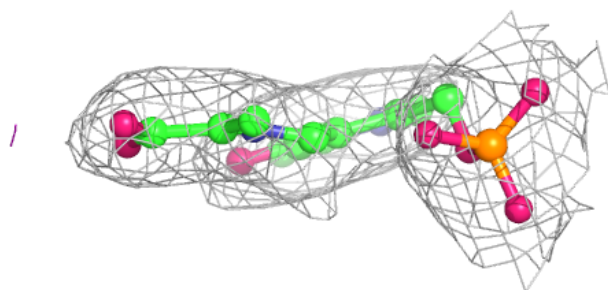
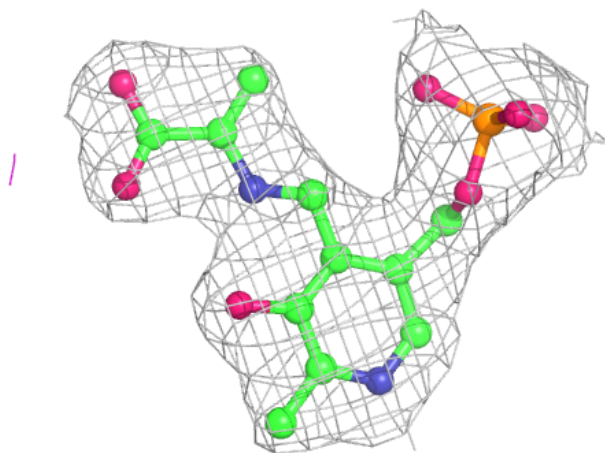
**Electron density around 0JO B 1604:**

$2mF_o-DF_c$  (at 0.7 rmsd) in gray  
 $mF_o-DF_c$  (at 3 rmsd) in purple (negative)  
and green (positive)



**Electron density around 0JO A 603:**

$2mF_o-DF_c$  (at 0.7 rmsd) in gray  
 $mF_o-DF_c$  (at 3 rmsd) in purple (negative)  
and green (positive)



## 6.5 Other polymers [i](#)

There are no such residues in this entry.