



# wwPDB X-ray Structure Validation Summary Report ⓘ

Jun 30, 2022 – 04:07 PM EDT

PDB ID : 7MQK  
Title : AAC(3)-IIIa in complex with CoA and sisomicin  
Authors : Zielinski, M.; Berghuis, A.M.  
Deposited on : 2021-05-05  
Resolution : 1.60 Å(reported)

This is a wwPDB X-ray Structure Validation Summary Report for a publicly released PDB entry.

We welcome your comments at [validation@mail.wwpdb.org](mailto:validation@mail.wwpdb.org)

A user guide is available at

<https://www.wwpdb.org/validation/2017/XrayValidationReportHelp>

with specific help available everywhere you see the ⓘ symbol.

The types of validation reports are described at <http://www.wwpdb.org/validation/2017/FAQs#types>.

---

The following versions of software and data (see [references ⓘ](#)) were used in the production of this report:

MolProbity : 4.02b-467  
Mogul : 1.8.5 (274361), CSD as541be (2020)  
Xtriage (Phenix) : 1.13  
EDS : 2.29  
buster-report : 1.1.7 (2018)  
Percentile statistics : 20191225.v01 (using entries in the PDB archive December 25th 2019)  
Refmac : 5.8.0158  
CCP4 : 7.0.044 (Gargrove)  
Ideal geometry (proteins) : Engh & Huber (2001)  
Ideal geometry (DNA, RNA) : Parkinson et al. (1996)  
Validation Pipeline (wwPDB-VP) : 2.29

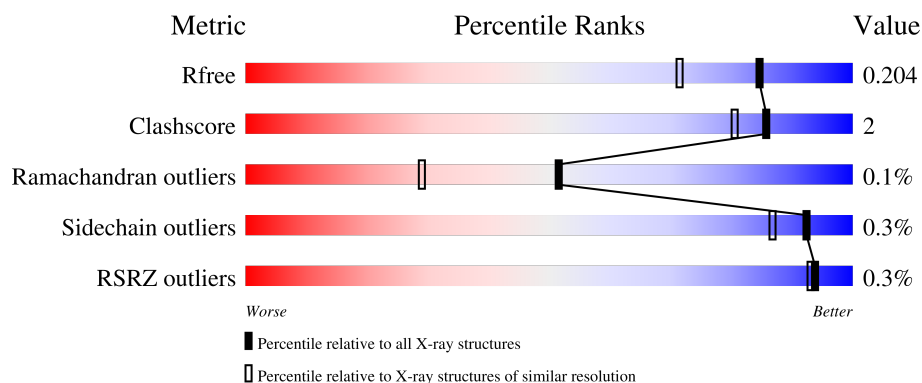
# 1 Overall quality at a glance

The following experimental techniques were used to determine the structure:

## *X-RAY DIFFRACTION*

The reported resolution of this entry is 1.60 Å.

Percentile scores (ranging between 0-100) for global validation metrics of the entry are shown in the following graphic. The table shows the number of entries on which the scores are based.



Metric	Whole archive (#Entries)	Similar resolution (#Entries, resolution range(Å))
$R_{free}$	130704	3398 (1.60-1.60)
Clashscore	141614	3665 (1.60-1.60)
Ramachandran outliers	138981	3564 (1.60-1.60)
Sidechain outliers	138945	3563 (1.60-1.60)
RSRZ outliers	127900	3321 (1.60-1.60)

The table below summarises the geometric issues observed across the polymeric chains and their fit to the electron density. The red, orange, yellow and green segments of the lower bar indicate the fraction of residues that contain outliers for  $\geq 3$ , 2, 1 and 0 types of geometric quality criteria respectively. A grey segment represents the fraction of residues that are not modelled. The numeric value for each fraction is indicated below the corresponding segment, with a dot representing fractions  $\leq 5\%$ . The upper red bar (where present) indicates the fraction of residues that have poor fit to the electron density. The numeric value is given above the bar.

Mol	Chain	Length	Quality of chain
1	A	274	<div> <div style="width: 100%; height: 10px; background: linear-gradient(to right, red 1%, orange 1%, yellow 1%, green 98%);"></div> <div style="display: flex; justify-content: space-between; margin-top: 2px;"> <span>%</span> <span>91%</span> <span>5%</span> </div> </div>
1	B	274	<div> <div style="width: 100%; height: 10px; background: linear-gradient(to right, green 89%, yellow 6%, grey 5%);"></div> <div style="display: flex; justify-content: space-between; margin-top: 2px;"> <span>89%</span> <span>6%</span> <span>5%</span> </div> </div>
1	C	274	<div> <div style="width: 100%; height: 10px; background: linear-gradient(to right, green 92%, yellow 5%, grey 3%);"></div> <div style="display: flex; justify-content: space-between; margin-top: 2px;"> <span>92%</span> <span>5%</span> </div> </div>
1	D	274	<div> <div style="width: 100%; height: 10px; background: linear-gradient(to right, green 92%, yellow 5%, grey 3%);"></div> <div style="display: flex; justify-content: space-between; margin-top: 2px;"> <span>92%</span> <span>5%</span> </div> </div>

## 2 Entry composition

There are 5 unique types of molecules in this entry. The entry contains 9825 atoms, of which 0 are hydrogens and 0 are deuteriums.

In the tables below, the ZeroOcc column contains the number of atoms modelled with zero occupancy, the AltConf column contains the number of residues with at least one atom in alternate conformation and the Trace column contains the number of residues modelled with at most 2 atoms.

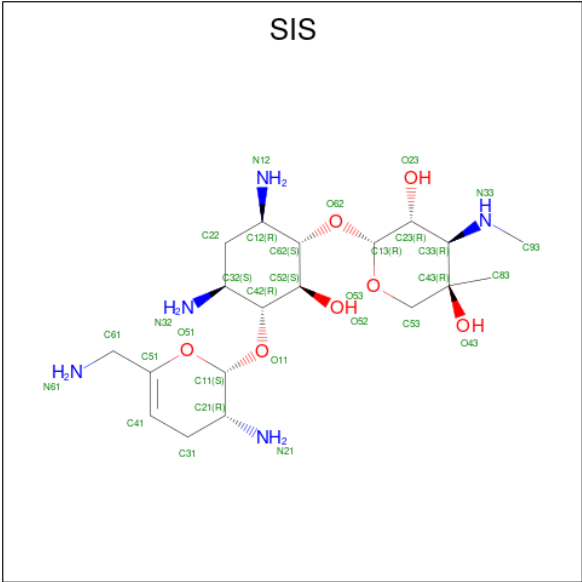
- Molecule 1 is a protein called Aminoglycoside N(3)-acetyltransferase III.

Mol	Chain	Residues	Atoms					ZeroOcc	AltConf	Trace
1	A	260	Total	C	N	O	S	0	5	0
			2024	1295	346	373	10			
1	B	261	Total	C	N	O	S	0	6	0
			2040	1302	352	375	11			
1	C	260	Total	C	N	O	S	0	8	0
			2048	1307	350	380	11			
1	D	261	Total	C	N	O	S	0	6	0
			2057	1307	359	380	11			

There are 12 discrepancies between the modelled and reference sequences:

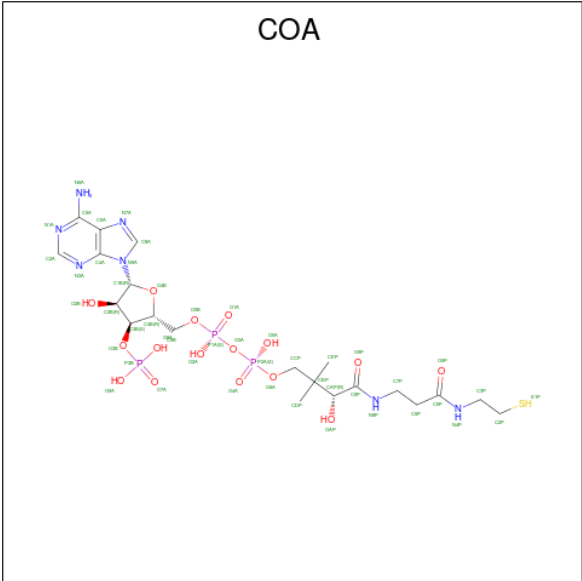
Chain	Residue	Modelled	Actual	Comment	Reference
A	-2	GLY	-	expression tag	UNP P29808
A	-1	SER	-	expression tag	UNP P29808
A	0	HIS	-	expression tag	UNP P29808
B	-2	GLY	-	expression tag	UNP P29808
B	-1	SER	-	expression tag	UNP P29808
B	0	HIS	-	expression tag	UNP P29808
C	-2	GLY	-	expression tag	UNP P29808
C	-1	SER	-	expression tag	UNP P29808
C	0	HIS	-	expression tag	UNP P29808
D	-2	GLY	-	expression tag	UNP P29808
D	-1	SER	-	expression tag	UNP P29808
D	0	HIS	-	expression tag	UNP P29808

- Molecule 2 is (1S,2S,3R,4S,6R)-4,6-diamino-3-[[[(2S,3R)-3-amino-6-(aminomethyl)-3,4-dihydro-2H-pyran-2-yl]oxy}-2-hydroxycyclohexyl 3-deoxy-4-C-methyl-3-(methylamino)-beta-L-arabinopyranoside (three-letter code: SIS) (formula: C<sub>19</sub>H<sub>37</sub>N<sub>5</sub>O<sub>7</sub>) (labeled as "Ligand of Interest" by depositor).



Mol	Chain	Residues	Atoms				ZeroOcc	AltConf
2	A	1	Total	C	N	O	0	0
			31	19	5	7		
2	B	1	Total	C	N	O	0	0
			31	19	5	7		
2	C	1	Total	C	N	O	0	0
			31	19	5	7		
2	D	1	Total	C	N	O	0	0
			31	19	5	7		

- Molecule 3 is COENZYME A (three-letter code: COA) (formula: C<sub>21</sub>H<sub>36</sub>N<sub>7</sub>O<sub>16</sub>P<sub>3</sub>S) (labeled as "Ligand of Interest" by depositor).



Mol	Chain	Residues	Atoms					ZeroOcc	AltConf
3	A	1	Total	C	N	O	P	S	
			48	21	7	16	3	1	
3	B	1	Total	C	N	O	P	S	
			48	21	7	16	3	1	
3	C	1	Total	C	N	O	P	S	
			48	21	7	16	3	1	
3	D	1	Total	C	N	O	P	S	
			48	21	7	16	3	1	

- Molecule 4 is GLYCEROL (three-letter code: GOL) (formula:  $C_3H_8O_3$ ).



Mol	Chain	Residues	Atoms			ZeroOcc	AltConf
4	B	1	Total	C	O		
			6	3	3	0	0

- Molecule 5 is water.

Mol	Chain	Residues	Atoms		ZeroOcc	AltConf
5	A	310	Total	O		
			310	310	0	0
5	B	314	Total	O		
			314	314	0	0
5	C	367	Total	O		
			368	368	0	1
5	D	341	Total	O		
			342	342	0	1



## 4 Data and refinement statistics

Property	Value	Source
Space group	P 21 21 2	Depositor
Cell constants a, b, c, $\alpha$ , $\beta$ , $\gamma$	130.18Å 90.93Å 100.05Å 90.00° 90.00° 90.00°	Depositor
Resolution (Å)	32.54 – 1.60 32.57 – 1.60	Depositor EDS
% Data completeness (in resolution range)	99.9 (32.54-1.60) 99.9 (32.57-1.60)	Depositor EDS
$R_{merge}$	(Not available)	Depositor
$R_{sym}$	(Not available)	Depositor
$\langle I/\sigma(I) \rangle$ <sup>1</sup>	4.18 (at 1.60Å)	Xtriage
Refinement program	PHENIX (1.15.1_3469: ???)	Depositor
R, $R_{free}$	0.179 , 0.204 0.179 , 0.204	Depositor DCC
$R_{free}$ test set	1636 reflections (1.05%)	wwPDB-VP
Wilson B-factor (Å <sup>2</sup> )	9.0	Xtriage
Anisotropy	0.543	Xtriage
Bulk solvent $k_{sol}$ (e/Å <sup>3</sup> ), $B_{sol}$ (Å <sup>2</sup> )	0.39 , 53.7	EDS
L-test for twinning <sup>2</sup>	$\langle  L  \rangle = 0.49$ , $\langle L^2 \rangle = 0.32$	Xtriage
Estimated twinning fraction	No twinning to report.	Xtriage
$F_o, F_c$ correlation	0.96	EDS
Total number of atoms	9825	wwPDB-VP
Average B, all atoms (Å <sup>2</sup> )	15.0	wwPDB-VP

Xtriage's analysis on translational NCS is as follows: *The analyses of the Patterson function reveals a significant off-origin peak that is 53.51 % of the origin peak, indicating pseudo-translational symmetry. The chance of finding a peak of this or larger height randomly in a structure without pseudo-translational symmetry is equal to 4.1718e-05. The detected translational NCS is most likely also responsible for the elevated intensity ratio.*

<sup>1</sup>Intensities estimated from amplitudes.

<sup>2</sup>Theoretical values of  $\langle |L| \rangle$ ,  $\langle L^2 \rangle$  for acentric reflections are 0.5, 0.333 respectively for untwinned datasets, and 0.375, 0.2 for perfectly twinned datasets.

## 5 Model quality [i](#)

### 5.1 Standard geometry [i](#)

Bond lengths and bond angles in the following residue types are not validated in this section: COA, GOL, SIS, CSO

The Z score for a bond length (or angle) is the number of standard deviations the observed value is removed from the expected value. A bond length (or angle) with  $|Z| > 5$  is considered an outlier worth inspection. RMSZ is the root-mean-square of all Z scores of the bond lengths (or angles).

Mol	Chain	Bond lengths		Bond angles	
		RMSZ	# Z  >5	RMSZ	# Z  >5
1	A	0.45	0/2068	0.58	0/2823
1	B	0.49	0/2084	0.63	1/2843 (0.0%)
1	C	0.47	0/2092	0.61	0/2856
1	D	0.45	0/2101	0.58	0/2864
All	All	0.47	0/8345	0.60	1/11386 (0.0%)

There are no bond length outliers.

All (1) bond angle outliers are listed below:

Mol	Chain	Res	Type	Atoms	Z	Observed(°)	Ideal(°)
1	B	76	SER	CB-CA-C	6.66	122.75	110.10

There are no chirality outliers.

There are no planarity outliers.

### 5.2 Too-close contacts [i](#)

In the following table, the Non-H and H(model) columns list the number of non-hydrogen atoms and hydrogen atoms in the chain respectively. The H(added) column lists the number of hydrogen atoms added and optimized by MolProbity. The Clashes column lists the number of clashes within the asymmetric unit, whereas Symm-Clashes lists symmetry-related clashes.

Mol	Chain	Non-H	H(model)	H(added)	Clashes	Symm-Clashes
1	A	2024	0	1961	7	0
1	B	2040	0	1976	13	0
1	C	2048	0	1971	6	0
1	D	2057	0	1989	4	0
2	A	31	0	37	1	0
2	B	31	0	37	1	0

*Continued on next page...*



*Continued from previous page...*

Mol	Chain	Non-H	H(model)	H(added)	Clashes	Symm-Clashes
2	C	31	0	37	1	0
2	D	31	0	37	1	0
3	A	48	0	32	1	0
3	B	48	0	32	4	0
3	C	48	0	32	2	0
3	D	48	0	32	3	0
4	B	6	0	8	1	0
5	A	310	0	0	1	0
5	B	314	0	0	3	0
5	C	368	0	0	2	0
5	D	342	0	0	2	0
All	All	9825	0	8181	36	0

The all-atom clashscore is defined as the number of clashes found per 1000 atoms (including hydrogen atoms). The all-atom clashscore for this structure is 2.

The worst 5 of 36 close contacts within the same asymmetric unit are listed below, sorted by their clash magnitude.

Atom-1	Atom-2	Interatomic distance (Å)	Clash overlap (Å)
1:A:68:GLN:HA	1:A:100[B]:VAL:HG12	1.75	0.68
2:A:501:SIS:N32	3:A:502:COA:S1P	2.67	0.67
2:C:701:SIS:N32	3:C:702:COA:S1P	2.68	0.66
2:B:301:SIS:N32	3:B:302:COA:S1P	2.71	0.64
2:D:301:SIS:N32	3:D:302:COA:S1P	2.71	0.63

There are no symmetry-related clashes.

## 5.3 Torsion angles [i](#)

### 5.3.1 Protein backbone [i](#)

In the following table, the Percentiles column shows the percent Ramachandran outliers of the chain as a percentile score with respect to all X-ray entries followed by that with respect to entries of similar resolution.

The Analysed column shows the number of residues for which the backbone conformation was analysed, and the total number of residues.

Mol	Chain	Analysed	Favoured	Allowed	Outliers	Percentiles
1	A	262/274 (96%)	254 (97%)	8 (3%)	0	<b>100</b> <b>100</b>

*Continued on next page...*

Continued from previous page...

Mol	Chain	Analysed	Favoured	Allowed	Outliers	Percentiles	
1	B	264/274 (96%)	257 (97%)	7 (3%)	0	100	100
1	C	265/274 (97%)	259 (98%)	6 (2%)	0	100	100
1	D	264/274 (96%)	259 (98%)	4 (2%)	1 (0%)	34	15
All	All	1055/1096 (96%)	1029 (98%)	25 (2%)	1 (0%)	51	29

All (1) Ramachandran outliers are listed below:

Mol	Chain	Res	Type
1	D	104	SER

### 5.3.2 Protein sidechains ⓘ

In the following table, the Percentiles column shows the percent sidechain outliers of the chain as a percentile score with respect to all X-ray entries followed by that with respect to entries of similar resolution.

The Analysed column shows the number of residues for which the sidechain conformation was analysed, and the total number of residues.

Mol	Chain	Analysed	Rotameric	Outliers	Percentiles	
1	A	202/214 (94%)	201 (100%)	1 (0%)	88	80
1	B	204/214 (95%)	204 (100%)	0	100	100
1	C	205/214 (96%)	205 (100%)	0	100	100
1	D	207/214 (97%)	205 (99%)	2 (1%)	76	61
All	All	818/856 (96%)	815 (100%)	3 (0%)	92	84

All (3) residues with a non-rotameric sidechain are listed below:

Mol	Chain	Res	Type
1	A	131	ARG
1	D	222[A]	GLU
1	D	222[B]	GLU

Sometimes sidechains can be flipped to improve hydrogen bonding and reduce clashes. All (1) such sidechains are listed below:

Mol	Chain	Res	Type
1	D	8	HIS

### 5.3.3 RNA ⓘ

There are no RNA molecules in this entry.

## 5.4 Non-standard residues in protein, DNA, RNA chains ⓘ

4 non-standard protein/DNA/RNA residues are modelled in this entry.

In the following table, the Counts columns list the number of bonds (or angles) for which Mogul statistics could be retrieved, the number of bonds (or angles) that are observed in the model and the number of bonds (or angles) that are defined in the Chemical Component Dictionary. The Link column lists molecule types, if any, to which the group is linked. The Z score for a bond length (or angle) is the number of standard deviations the observed value is removed from the expected value. A bond length (or angle) with  $|Z| > 2$  is considered an outlier worth inspection. RMSZ is the root-mean-square of all Z scores of the bond lengths (or angles).

Mol	Type	Chain	Res	Link	Bond lengths			Bond angles		
					Counts	RMSZ	$\# Z  > 2$	Counts	RMSZ	$\# Z  > 2$
1	CSO	D	115	1	3,6,7	0.74	0	0,6,8	-	-
1	CSO	A	115	1	3,6,7	0.57	0	0,6,8	-	-
1	CSO	C	115	1	3,6,7	0.62	0	0,6,8	-	-
1	CSO	B	115	1	3,6,7	0.51	0	0,6,8	-	-

In the following table, the Chirals column lists the number of chiral outliers, the number of chiral centers analysed, the number of these observed in the model and the number defined in the Chemical Component Dictionary. Similar counts are reported in the Torsion and Rings columns. '-' means no outliers of that kind were identified.

Mol	Type	Chain	Res	Link	Chirals	Torsions	Rings
1	CSO	D	115	1	-	0/1/5/7	-
1	CSO	A	115	1	-	0/1/5/7	-
1	CSO	C	115	1	-	0/1/5/7	-
1	CSO	B	115	1	-	0/1/5/7	-

There are no bond length outliers.

There are no bond angle outliers.

There are no chirality outliers.

There are no torsion outliers.

There are no ring outliers.

No monomer is involved in short contacts.

## 5.5 Carbohydrates [i](#)

There are no monosaccharides in this entry.

## 5.6 Ligand geometry [i](#)

9 ligands are modelled in this entry.

In the following table, the Counts columns list the number of bonds (or angles) for which Mogul statistics could be retrieved, the number of bonds (or angles) that are observed in the model and the number of bonds (or angles) that are defined in the Chemical Component Dictionary. The Link column lists molecule types, if any, to which the group is linked. The Z score for a bond length (or angle) is the number of standard deviations the observed value is removed from the expected value. A bond length (or angle) with  $|Z| > 2$  is considered an outlier worth inspection. RMSZ is the root-mean-square of all Z scores of the bond lengths (or angles).

Mol	Type	Chain	Res	Link	Bond lengths			Bond angles		
					Counts	RMSZ	# $ Z  > 2$	Counts	RMSZ	# $ Z  > 2$
3	COA	A	502	-	41,50,50	3.55	11 (26%)	52,75,75	1.78	9 (17%)
3	COA	B	302	-	41,50,50	3.46	11 (26%)	52,75,75	1.95	11 (21%)
2	SIS	B	301	-	28,33,33	1.49	5 (17%)	28,49,49	1.36	4 (14%)
3	COA	D	302	-	41,50,50	3.66	14 (34%)	52,75,75	2.06	10 (19%)
4	GOL	B	303	-	5,5,5	0.57	0	5,5,5	0.41	0
2	SIS	A	501	-	28,33,33	1.25	3 (10%)	28,49,49	1.29	3 (10%)
2	SIS	D	301	-	28,33,33	1.42	3 (10%)	28,49,49	1.38	2 (7%)
2	SIS	C	701	-	28,33,33	1.21	2 (7%)	28,49,49	1.17	1 (3%)
3	COA	C	702	-	41,50,50	3.56	12 (29%)	52,75,75	2.09	10 (19%)

In the following table, the Chirals column lists the number of chiral outliers, the number of chiral centers analysed, the number of these observed in the model and the number defined in the Chemical Component Dictionary. Similar counts are reported in the Torsion and Rings columns. '-' means no outliers of that kind were identified.

Mol	Type	Chain	Res	Link	Chirals	Torsions	Rings
3	COA	A	502	-	-	2/44/64/64	0/3/3/3
3	COA	B	302	-	-	3/44/64/64	0/3/3/3
2	SIS	B	301	-	-	0/9/65/65	0/3/3/3
3	COA	D	302	-	-	3/44/64/64	0/3/3/3
4	GOL	B	303	-	-	1/4/4/4	-
2	SIS	A	501	-	-	0/9/65/65	0/3/3/3
2	SIS	D	301	-	-	0/9/65/65	0/3/3/3
2	SIS	C	701	-	-	0/9/65/65	0/3/3/3

*Continued on next page...*

*Continued from previous page...*

Mol	Type	Chain	Res	Link	Chirals	Torsions	Rings
3	COA	C	702	-	-	3/44/64/64	0/3/3/3

The worst 5 of 61 bond length outliers are listed below:

Mol	Chain	Res	Type	Atoms	Z	Observed(Å)	Ideal(Å)
3	D	302	COA	O4B-C1B	14.08	1.60	1.41
3	A	502	COA	O4B-C1B	13.62	1.60	1.41
3	C	702	COA	O4B-C1B	13.14	1.59	1.41
3	B	302	COA	O4B-C1B	12.92	1.59	1.41
3	A	502	COA	C2B-C1B	-11.25	1.36	1.53

The worst 5 of 50 bond angle outliers are listed below:

Mol	Chain	Res	Type	Atoms	Z	Observed(°)	Ideal(°)
3	D	302	COA	C5A-C6A-N6A	7.08	131.12	120.35
3	B	302	COA	C5A-C6A-N6A	6.66	130.47	120.35
3	C	702	COA	C5A-C6A-N6A	6.30	129.93	120.35
3	C	702	COA	N3A-C2A-N1A	-5.91	119.44	128.68
3	A	502	COA	C5A-C6A-N6A	5.54	128.77	120.35

There are no chirality outliers.

5 of 12 torsion outliers are listed below:

Mol	Chain	Res	Type	Atoms
3	A	502	COA	S1P-C2P-C3P-N4P
3	B	302	COA	C3B-O3B-P3B-O9A
3	B	302	COA	S1P-C2P-C3P-N4P
3	C	702	COA	S1P-C2P-C3P-N4P
3	D	302	COA	S1P-C2P-C3P-N4P

There are no ring outliers.

9 monomers are involved in 11 short contacts:

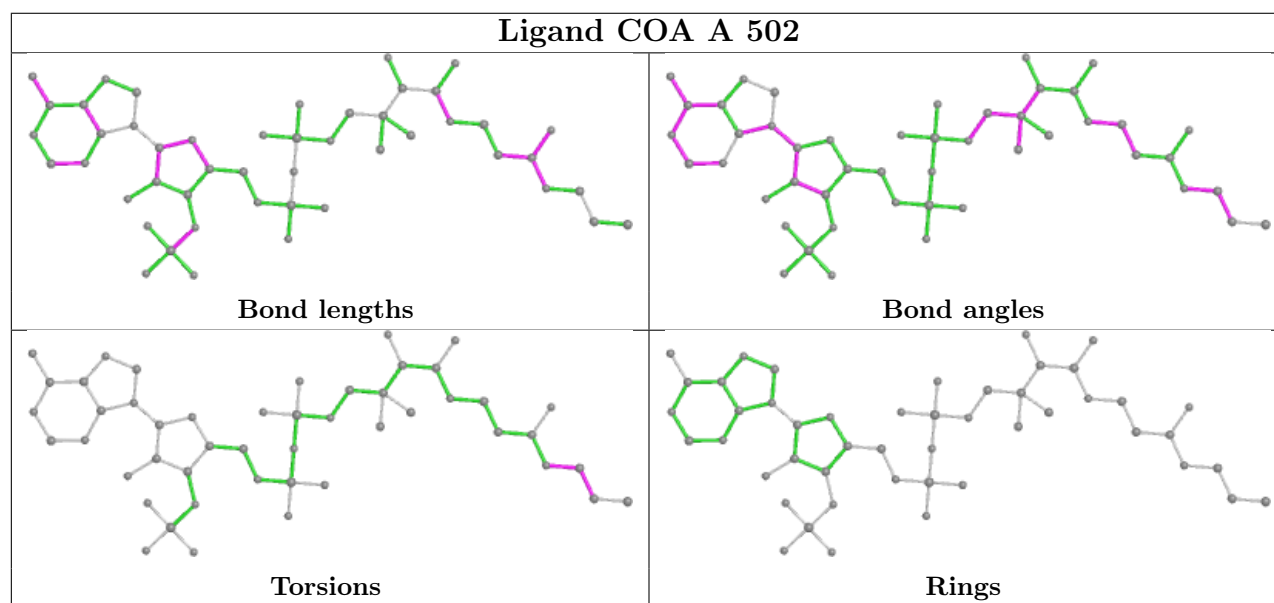
Mol	Chain	Res	Type	Clashes	Symm-Clashes
3	A	502	COA	1	0
3	B	302	COA	4	0
2	B	301	SIS	1	0
3	D	302	COA	3	0
4	B	303	GOL	1	0
2	A	501	SIS	1	0
2	D	301	SIS	1	0

*Continued on next page...*

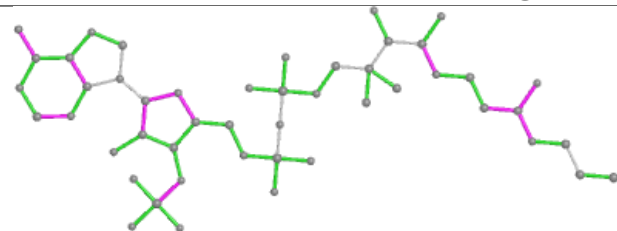
*Continued from previous page...*

Mol	Chain	Res	Type	Clashes	Symm-Clashes
2	C	701	SIS	1	0
3	C	702	COA	2	0

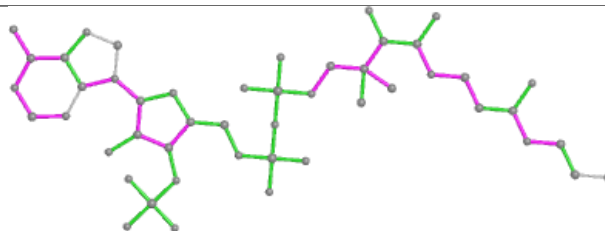
The following is a two-dimensional graphical depiction of Mogul quality analysis of bond lengths, bond angles, torsion angles, and ring geometry for all instances of the Ligand of Interest. In addition, ligands with molecular weight > 250 and outliers as shown on the validation Tables will also be included. For torsion angles, if less than 5% of the Mogul distribution of torsion angles is within 10 degrees of the torsion angle in question, then that torsion angle is considered an outlier. Any bond that is central to one or more torsion angles identified as an outlier by Mogul will be highlighted in the graph. For rings, the root-mean-square deviation (RMSD) between the ring in question and similar rings identified by Mogul is calculated over all ring torsion angles. If the average RMSD is greater than 60 degrees and the minimal RMSD between the ring in question and any Mogul-identified rings is also greater than 60 degrees, then that ring is considered an outlier. The outliers are highlighted in purple. The color gray indicates Mogul did not find sufficient equivalents in the CSD to analyse the geometry.



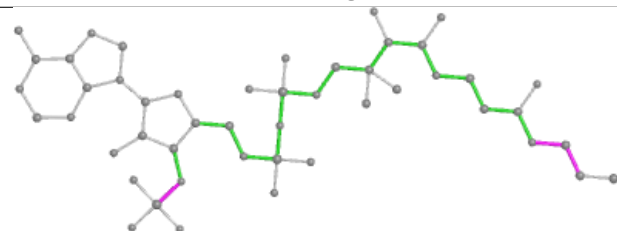
## Ligand COA B 302



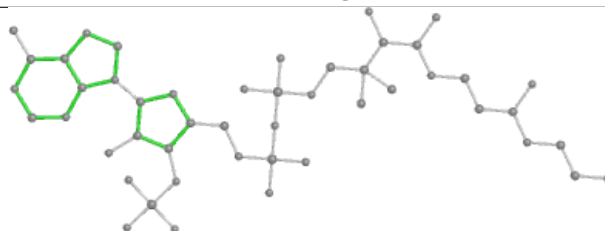
Bond lengths



Bond angles

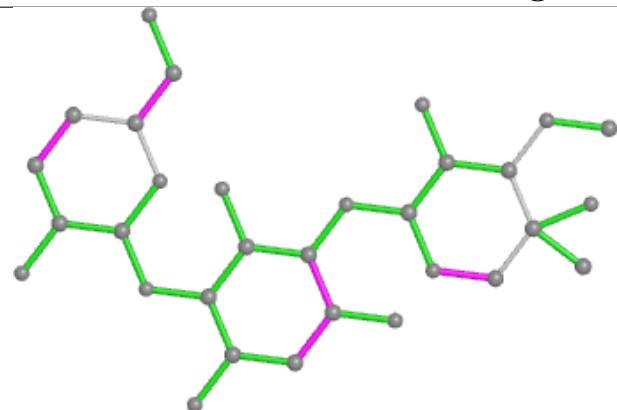


Torsions

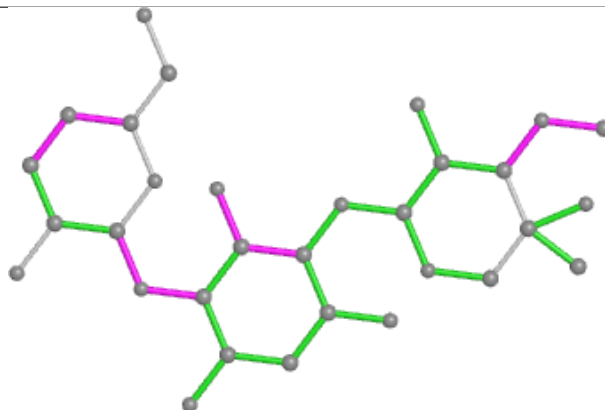


Rings

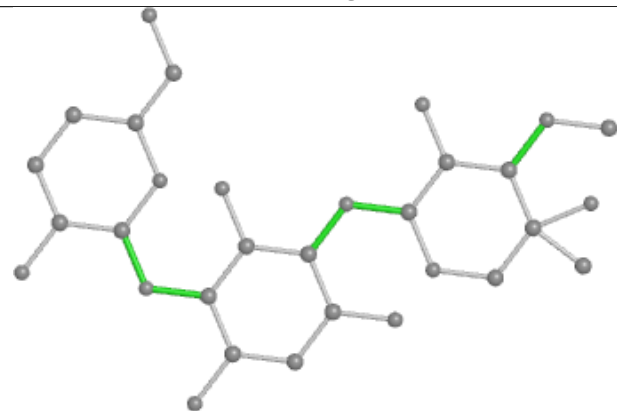
## Ligand SIS B 301



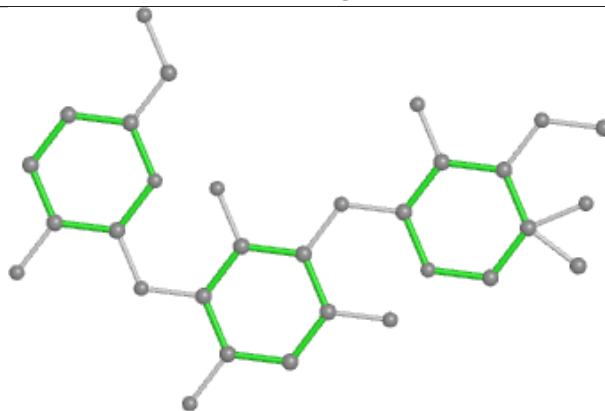
Bond lengths



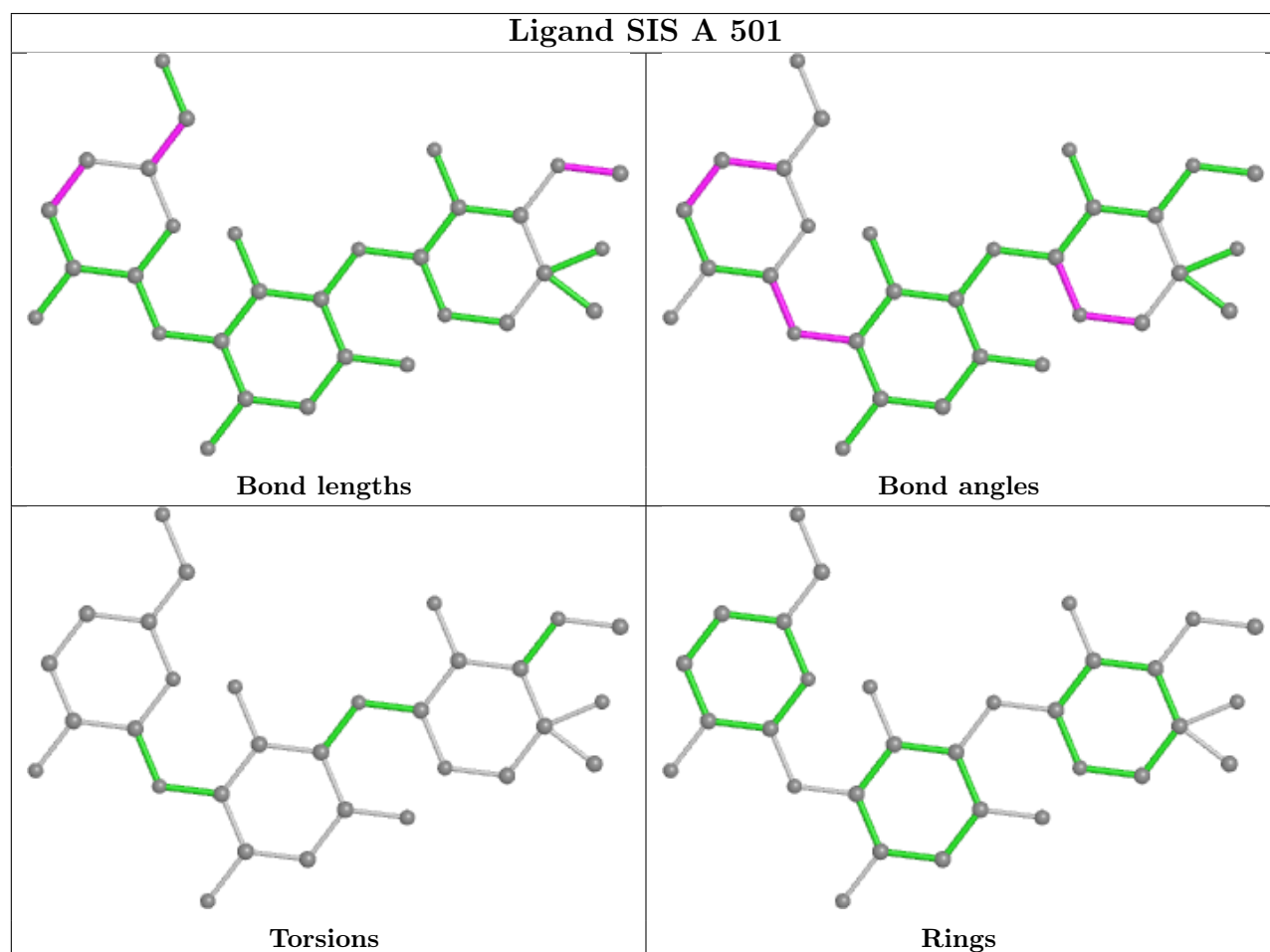
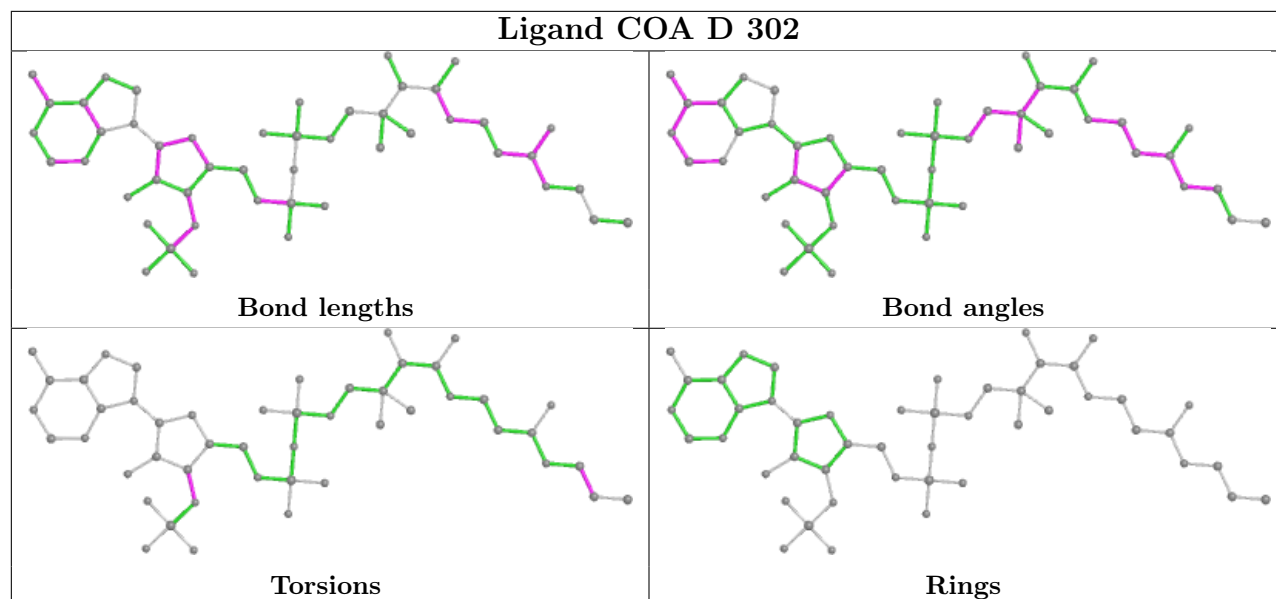
Bond angles



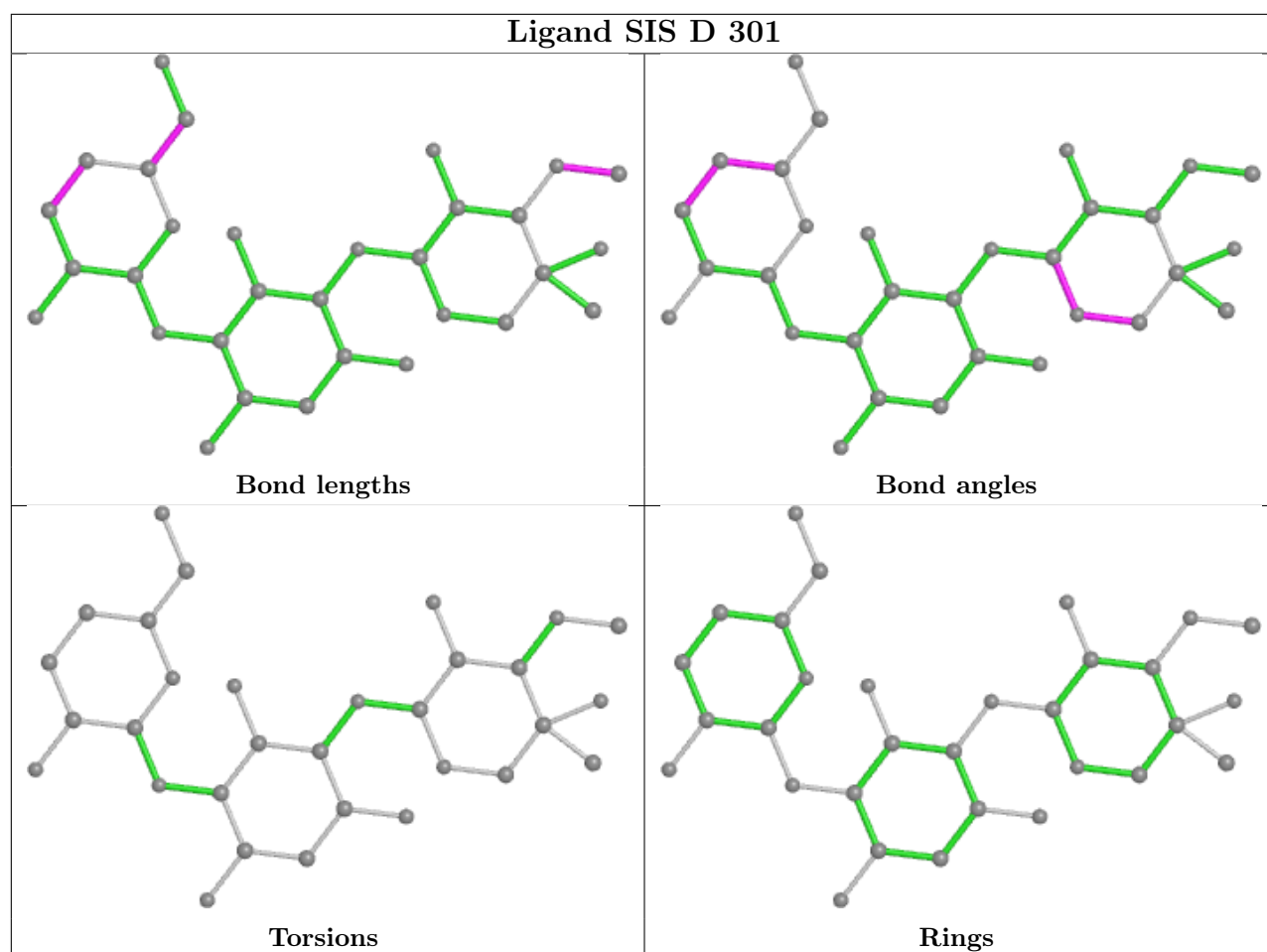
Torsions

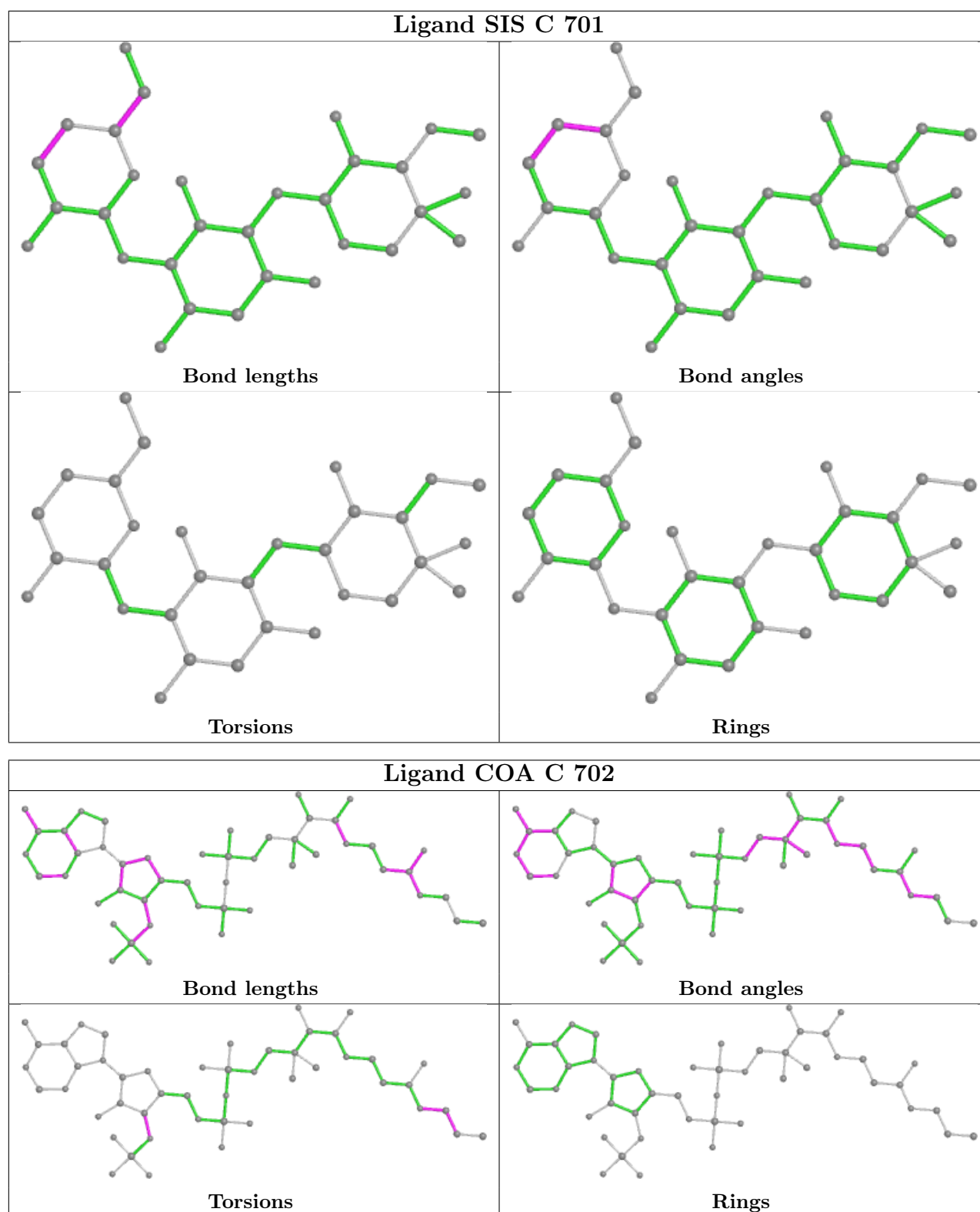


Rings









## 5.7 Other polymers [\(i\)](#)

There are no such residues in this entry.

## 5.8 Polymer linkage issues ⓘ

There are no chain breaks in this entry.

## 6 Fit of model and data [i](#)

### 6.1 Protein, DNA and RNA chains [i](#)

In the following table, the column labelled ‘#RSRZ> 2’ contains the number (and percentage) of RSRZ outliers, followed by percent RSRZ outliers for the chain as percentile scores relative to all X-ray entries and entries of similar resolution. The OWAB column contains the minimum, median, 95<sup>th</sup> percentile and maximum values of the occupancy-weighted average B-factor per residue. The column labelled ‘Q< 0.9’ lists the number of (and percentage) of residues with an average occupancy less than 0.9.

Mol	Chain	Analysed	<RSRZ>	#RSRZ>2	OWAB(Å <sup>2</sup> )	Q<0.9
1	A	259/274 (94%)	-0.31	2 (0%) 86 86	5, 13, 29, 44	0
1	B	260/274 (94%)	-0.33	0 100 100	4, 11, 26, 45	0
1	C	259/274 (94%)	-0.54	1 (0%) 92 92	4, 11, 21, 42	0
1	D	260/274 (94%)	-0.48	0 100 100	5, 13, 23, 40	0
All	All	1038/1096 (94%)	-0.41	3 (0%) 94 93	4, 12, 25, 45	0

All (3) RSRZ outliers are listed below:

Mol	Chain	Res	Type	RSRZ
1	A	232	GLY	2.7
1	C	6	ILE	2.5
1	A	6	ILE	2.1

### 6.2 Non-standard residues in protein, DNA, RNA chains [i](#)

In the following table, the Atoms column lists the number of modelled atoms in the group and the number defined in the chemical component dictionary. The B-factors column lists the minimum, median, 95<sup>th</sup> percentile and maximum values of B factors of atoms in the group. The column labelled ‘Q< 0.9’ lists the number of atoms with occupancy less than 0.9.

Mol	Type	Chain	Res	Atoms	RSCC	RSR	B-factors(Å <sup>2</sup> )	Q<0.9
1	CSO	B	115	7/8	0.96	0.07	8,10,21,21	0
1	CSO	A	115	7/8	0.97	0.07	11,11,21,22	0
1	CSO	C	115	7/8	0.97	0.06	9,10,19,20	0
1	CSO	D	115	7/8	0.97	0.06	11,13,19,19	0

### 6.3 Carbohydrates [i](#)

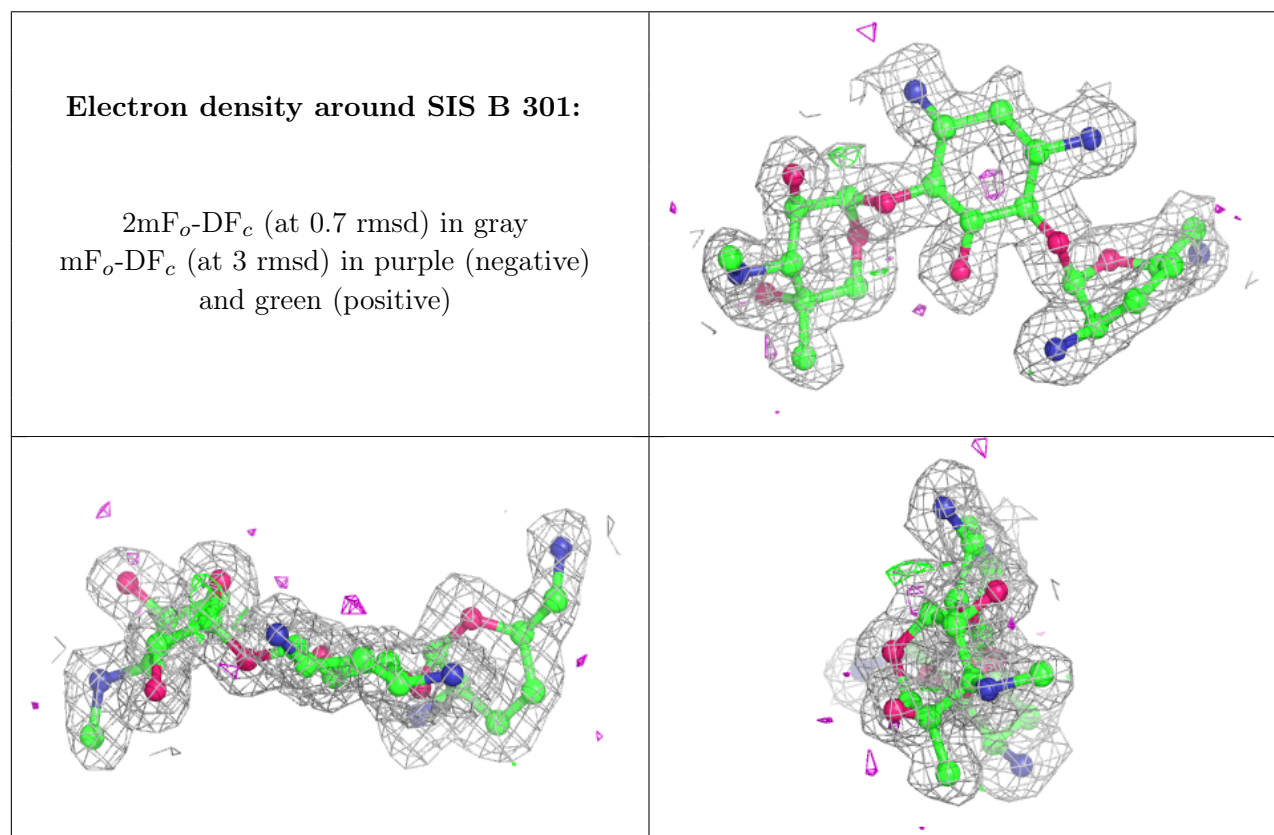
There are no monosaccharides in this entry.

## 6.4 Ligands [i](#)

In the following table, the Atoms column lists the number of modelled atoms in the group and the number defined in the chemical component dictionary. The B-factors column lists the minimum, median, 95<sup>th</sup> percentile and maximum values of B factors of atoms in the group. The column labelled 'Q< 0.9' lists the number of atoms with occupancy less than 0.9.

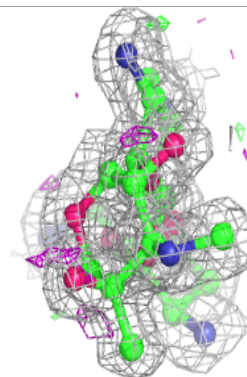
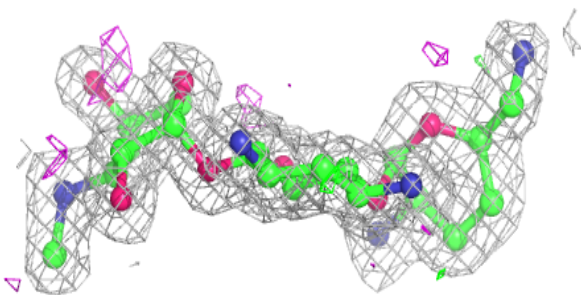
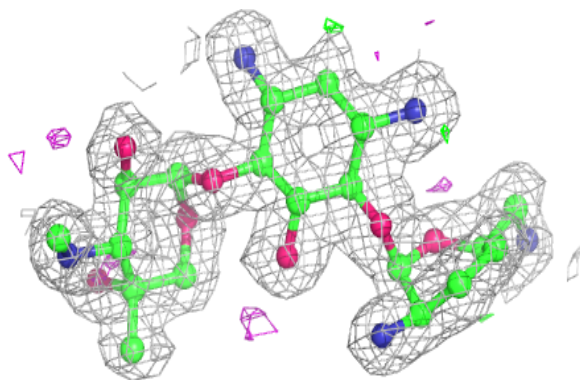
Mol	Type	Chain	Res	Atoms	RSCC	RSR	B-factors(Å <sup>2</sup> )	Q<0.9
4	GOL	B	303	6/6	0.76	0.15	41,42,42,43	0
2	SIS	B	301	31/31	0.95	0.08	7,10,21,22	0
2	SIS	A	501	31/31	0.95	0.08	9,12,21,23	0
3	COA	C	702	48/48	0.96	0.09	6,14,30,35	0
3	COA	D	302	48/48	0.96	0.08	8,15,37,39	0
2	SIS	C	701	31/31	0.96	0.07	8,11,19,20	0
2	SIS	D	301	31/31	0.97	0.06	6,11,18,19	0
3	COA	A	502	48/48	0.97	0.09	10,16,43,44	0
3	COA	B	302	48/48	0.97	0.09	6,15,39,42	0

The following is a graphical depiction of the model fit to experimental electron density of all instances of the Ligand of Interest. In addition, ligands with molecular weight > 250 and outliers as shown on the geometry validation Tables will also be included. Each fit is shown from different orientation to approximate a three-dimensional view.

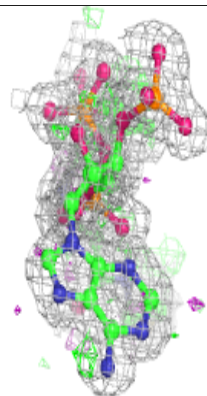
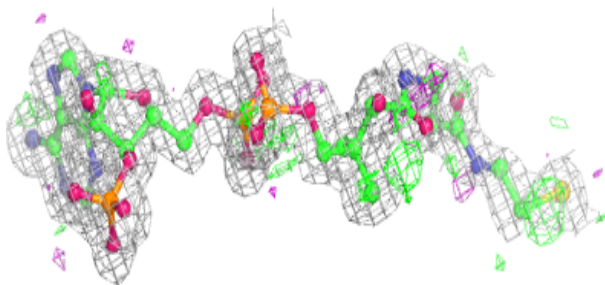
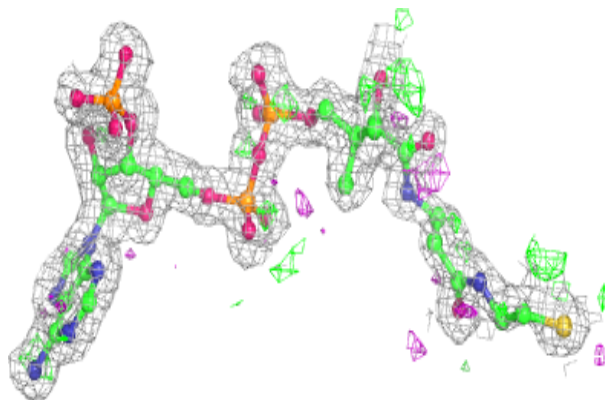


**Electron density around SIS A 501:**

$2mF_o-DF_c$  (at 0.7 rmsd) in gray  
 $mF_o-DF_c$  (at 3 rmsd) in purple (negative)  
and green (positive)

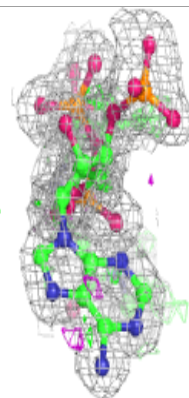
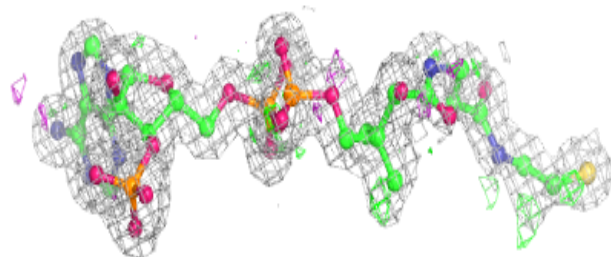
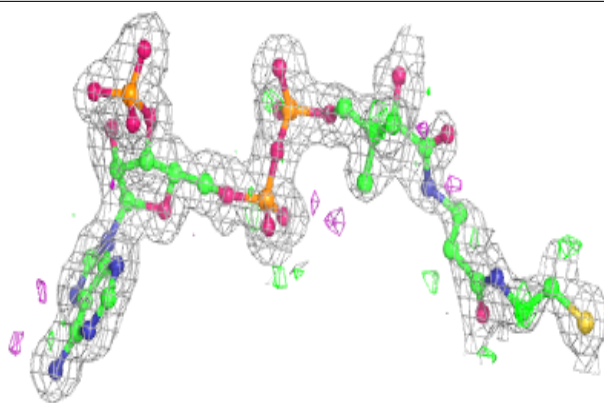
**Electron density around COA C 702:**

$2mF_o-DF_c$  (at 0.7 rmsd) in gray  
 $mF_o-DF_c$  (at 3 rmsd) in purple (negative)  
and green (positive)

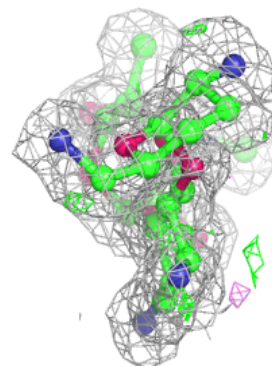
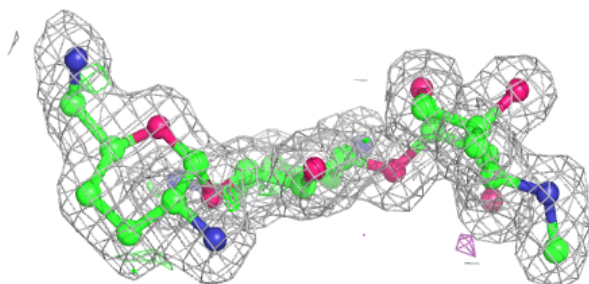
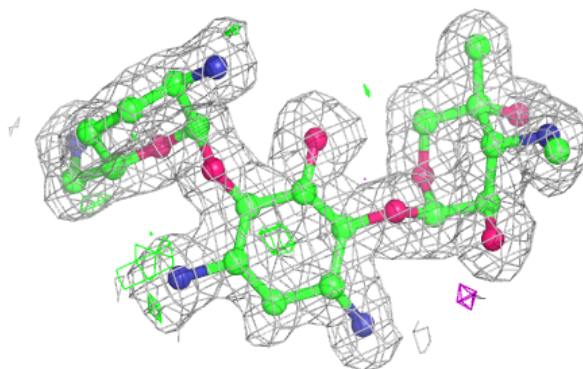


**Electron density around COA D 302:**

$2mF_o-DF_c$  (at 0.7 rmsd) in gray  
 $mF_o-DF_c$  (at 3 rmsd) in purple (negative)  
and green (positive)

**Electron density around SIS C 701:**

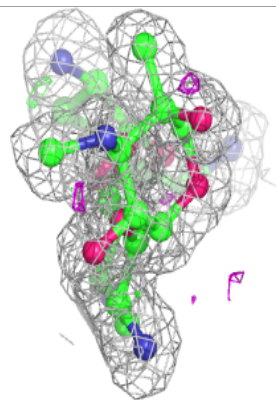
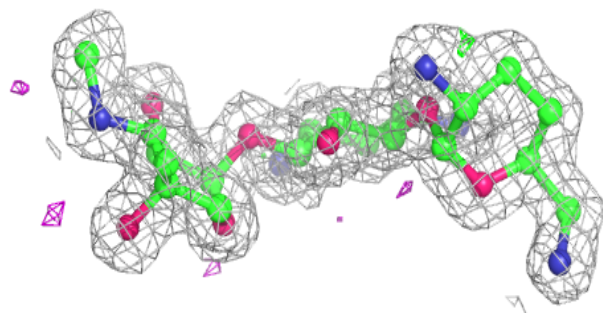
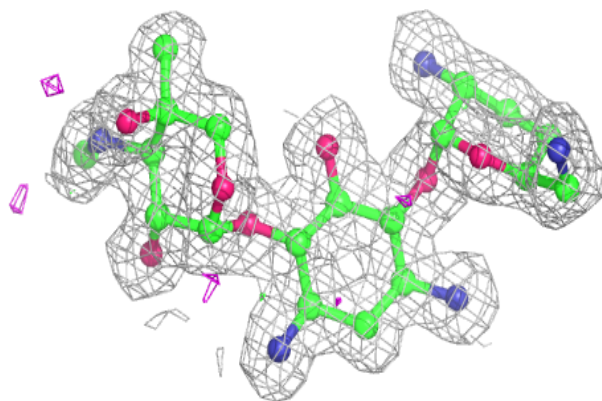
$2mF_o-DF_c$  (at 0.7 rmsd) in gray  
 $mF_o-DF_c$  (at 3 rmsd) in purple (negative)  
and green (positive)



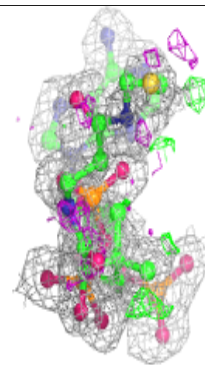
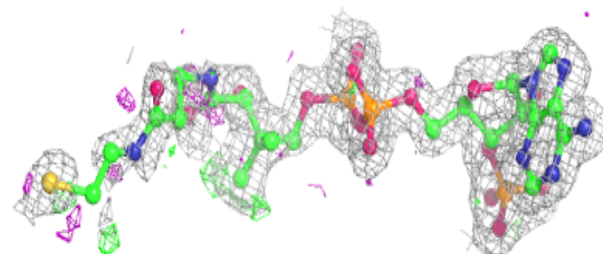
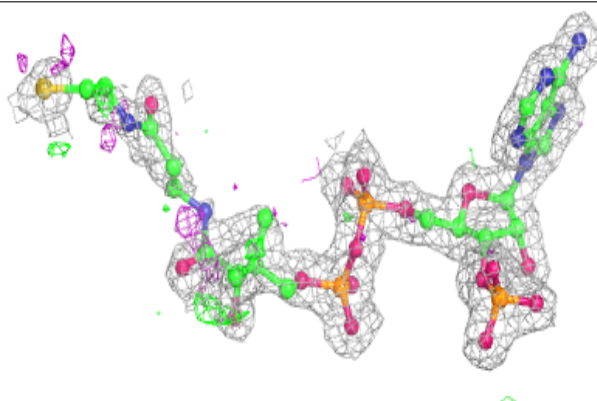


**Electron density around SIS D 301:**

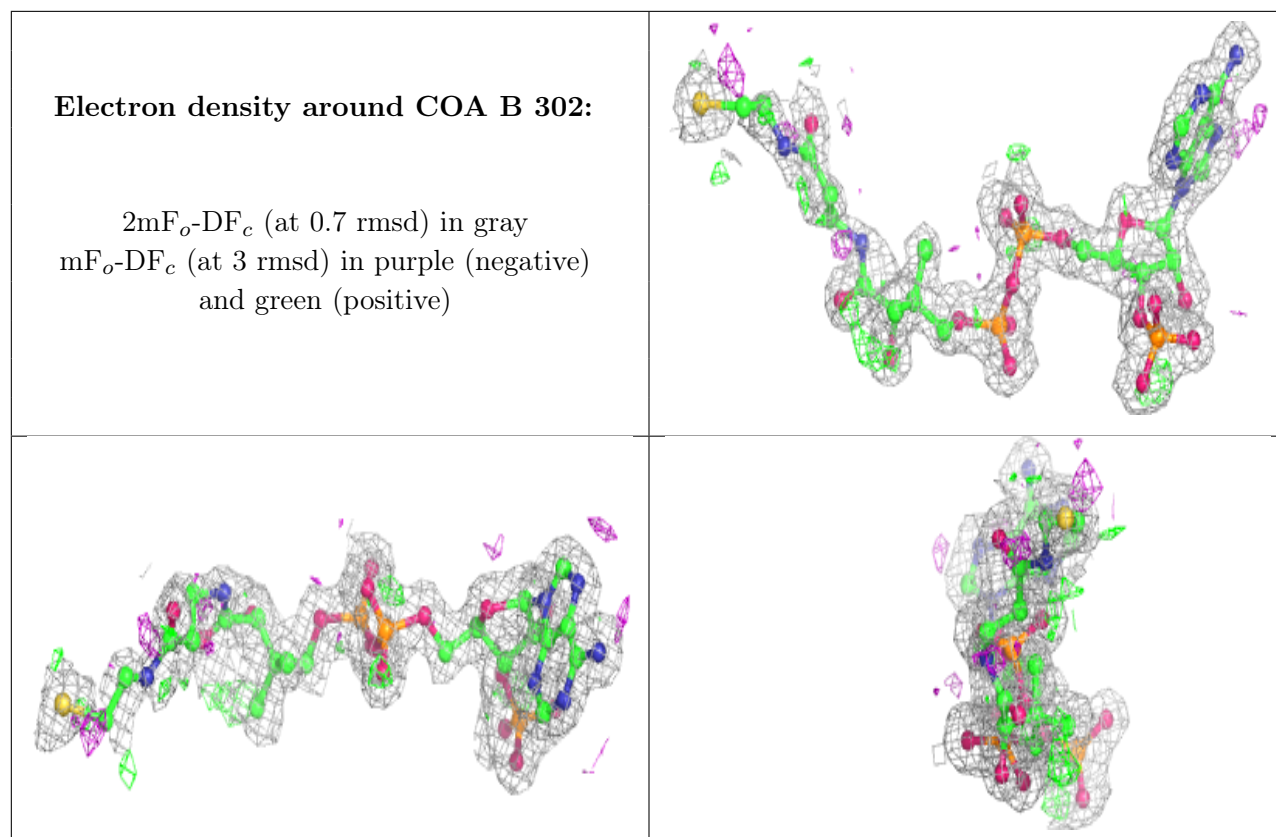
$2mF_o-DF_c$  (at 0.7 rmsd) in gray  
 $mF_o-DF_c$  (at 3 rmsd) in purple (negative)  
and green (positive)

**Electron density around COA A 502:**

$2mF_o-DF_c$  (at 0.7 rmsd) in gray  
 $mF_o-DF_c$  (at 3 rmsd) in purple (negative)  
and green (positive)







## 6.5 Other polymers [i](#)

There are no such residues in this entry.