



## Full wwPDB EM Validation Report ⓘ

Dec 8, 2022 – 04:07 PM EST

PDB ID : 7MX2  
EMDB ID : EMD-24070  
Title : Cryo-EM structure of human ternary NatC complex with a Bisubstrate inhibitor  
Authors : Deng, S.; Marmorstein, R.  
Deposited on : 2021-05-18  
Resolution : 3.64 Å(reported)

This is a Full wwPDB EM Validation Report for a publicly released PDB entry.

We welcome your comments at [validation@mail.wwpdb.org](mailto:validation@mail.wwpdb.org)

A user guide is available at

<https://www.wwpdb.org/validation/2017/EMValidationReportHelp>  
with specific help available everywhere you see the ⓘ symbol.

The types of validation reports are described at

<http://www.wwpdb.org/validation/2017/FAQs#types>.

---

The following versions of software and data (see [references ⓘ](#)) were used in the production of this report:

EMDB validation analysis : 0.0.1.dev43  
Mogul : 1.8.5 (274361), CSD as541be (2020)  
MolProbity : 4.02b-467  
buster-report : 1.1.7 (2018)  
Percentile statistics : 20191225.v01 (using entries in the PDB archive December 25th 2019)  
MapQ : 1.9.9  
Ideal geometry (proteins) : Engh & Huber (2001)  
Ideal geometry (DNA, RNA) : Parkinson et al. (1996)  
Validation Pipeline (wwPDB-VP) : 2.31.2

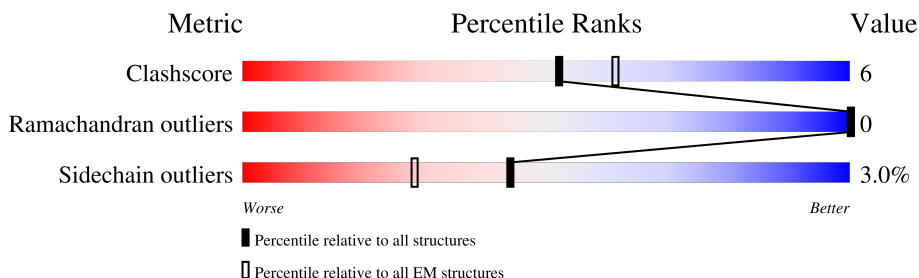
# 1 Overall quality at a glance

The following experimental techniques were used to determine the structure:

*ELECTRON MICROSCOPY*

The reported resolution of this entry is 3.64 Å.

Percentile scores (ranging between 0-100) for global validation metrics of the entry are shown in the following graphic. The table shows the number of entries on which the scores are based.



Metric	Whole archive (#Entries)	EM structures (#Entries)
Clashscore	158937	4297
Ramachandran outliers	154571	4023
Sidechain outliers	154315	3826

The table below summarises the geometric issues observed across the polymeric chains and their fit to the map. The red, orange, yellow and green segments of the bar indicate the fraction of residues that contain outliers for  $\geq 3$ , 2, 1 and 0 types of geometric quality criteria respectively. A grey segment represents the fraction of residues that are not modelled. The numeric value for each fraction is indicated below the corresponding segment, with a dot representing fractions  $\leq 5\%$ . The upper red bar (where present) indicates the fraction of residues that have poor fit to the EM map (all-atom inclusion  $< 40\%$ ). The numeric value is given above the bar.

Mol	Chain	Length	Quality of chain
1	B	725	 83% 6% 11%
2	C	125	 50% 7% 43%
3	A	152	 85% 14% .
4	D	4	 25% 75%

## 2 Entry composition

There are 5 unique types of molecules in this entry. The entry contains 6159 atoms, of which 0 are hydrogens and 0 are deuteriums.

In the tables below, the AltConf column contains the number of residues with at least one atom in alternate conformation and the Trace column contains the number of residues modelled with at most 2 atoms.

- Molecule 1 is a protein called N-alpha-acetyltransferase 35, NatC auxiliary subunit.

Mol	Chain	Residues	Atoms					AltConf	Trace
1	B	648	Total	C	N	O	S	0	0
			4515	2920	786	778	31		

- Molecule 2 is a protein called N-alpha-acetyltransferase 38, NatC auxiliary subunit.

Mol	Chain	Residues	Atoms					AltConf	Trace
2	C	71	Total	C	N	O	S	0	0
			451	287	86	76	2		

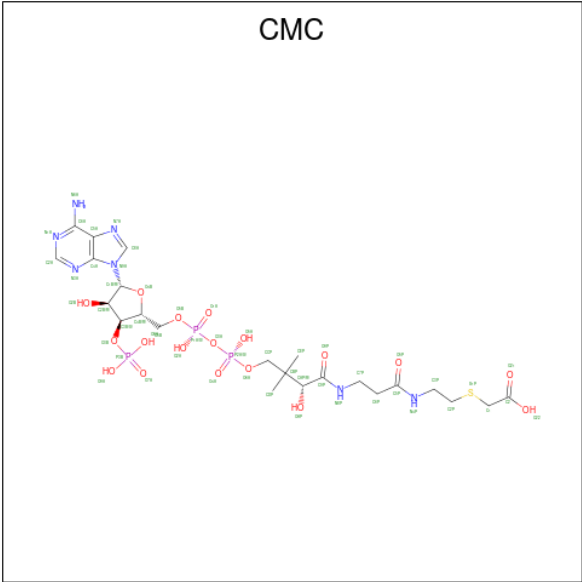
- Molecule 3 is a protein called N-alpha-acetyltransferase 30.

Mol	Chain	Residues	Atoms					AltConf	Trace
3	A	152	Total	C	N	O	S	0	0
			1115	730	195	185	5		

- Molecule 4 is a protein called peptide portion of bisubstrate inhibitor.

Mol	Chain	Residues	Atoms					AltConf	Trace
4	D	4	Total	C	N	O	S	0	0
			27	18	4	4	1		

- Molecule 5 is CARBOXYMETHYL COENZYME \*A (three-letter code: CMC) (formula: C<sub>23</sub>H<sub>38</sub>N<sub>7</sub>O<sub>18</sub>P<sub>3</sub>S) (labeled as "Ligand of Interest" by depositor).

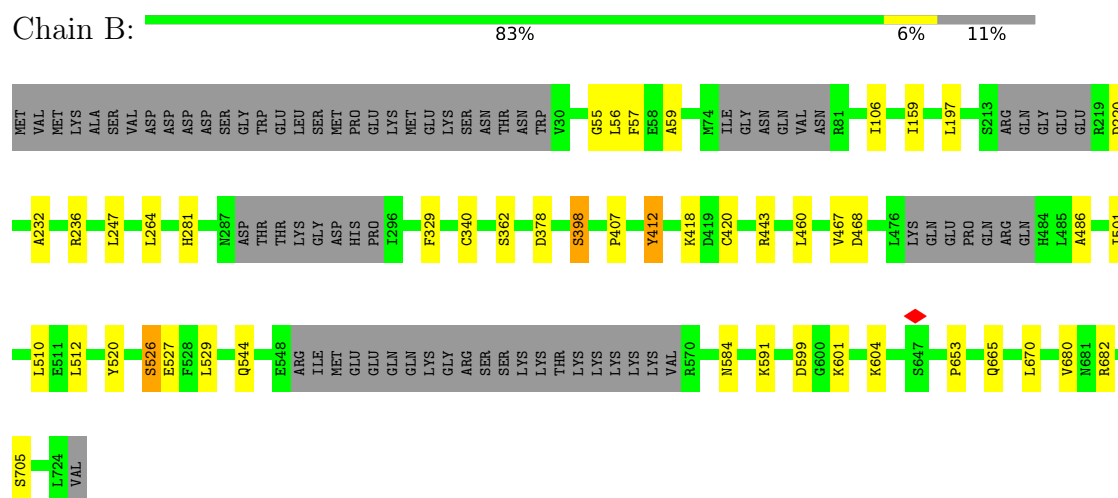


Mol	Chain	Residues	Atoms						AltConf
			Total	C	N	O	P	S	
5	D	1	51	23	7	17	3	1	0

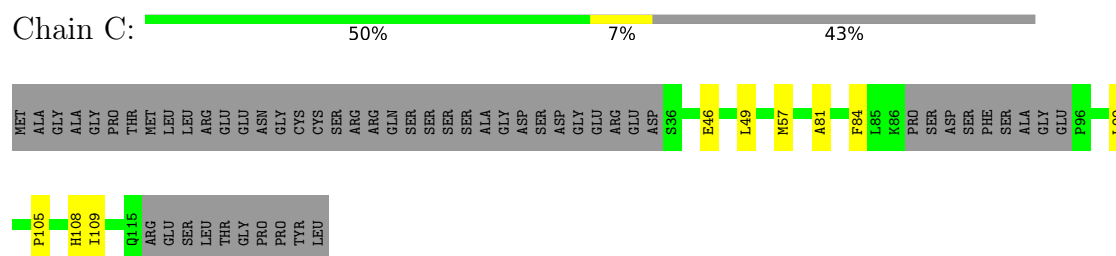
### 3 Residue-property plots

These plots are drawn for all protein, RNA, DNA and oligosaccharide chains in the entry. The first graphic for a chain summarises the proportions of the various outlier classes displayed in the second graphic. The second graphic shows the sequence view annotated by issues in geometry and atom inclusion in map density. Residues are color-coded according to the number of geometric quality criteria for which they contain at least one outlier: green = 0, yellow = 1, orange = 2 and red = 3 or more. A red diamond above a residue indicates a poor fit to the EM map for this residue (all-atom inclusion < 40%). Stretches of 2 or more consecutive residues without any outlier are shown as a green connector. Residues present in the sample, but not in the model, are shown in grey.

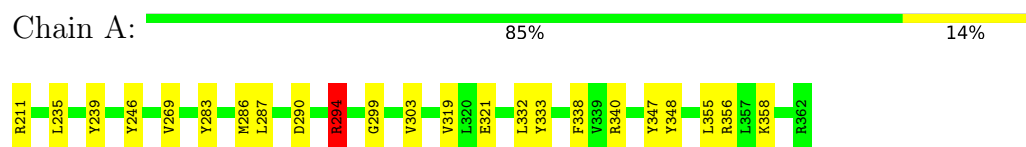
- Molecule 1: N-alpha-acetyltransferase 35, NatC auxiliary subunit



- Molecule 2: N-alpha-acetyltransferase 38, NatC auxiliary subunit



- Molecule 3: N-alpha-acetyltransferase 30



- Molecule 4: peptide portion of bisubstrate inhibitor



M402
L403
G404
P405

## 4 Experimental information

Property	Value	Source
EM reconstruction method	SINGLE PARTICLE	Depositor
Imposed symmetry	POINT, Not provided	
Number of particles used	172041	Depositor
Resolution determination method	FSC 0.143 CUT-OFF	Depositor
CTF correction method	PHASE FLIPPING AND AMPLITUDE CORRECTION	Depositor
Microscope	FEI TITAN KRIOS	Depositor
Voltage (kV)	300	Depositor
Electron dose ( $e^-/\text{\AA}^2$ )	1.6, 1.3	Depositor
Minimum defocus (nm)	1.0	Depositor
Maximum defocus (nm)	3.0	Depositor
Magnification	Not provided	
Image detector	GATAN K3 (6k x 4k), GATAN K3 (6k x 4k)	Depositor
Maximum map value	2.064	Depositor
Minimum map value	-1.364	Depositor
Average map value	0.004	Depositor
Map value standard deviation	0.093	Depositor
Recommended contour level	0.3	Depositor
Map size ( $\text{\AA}$ )	168.0, 168.0, 168.0	wwPDB
Map dimensions	200, 200, 200	wwPDB
Map angles ( $^\circ$ )	90.0, 90.0, 90.0	wwPDB
Pixel spacing ( $\text{\AA}$ )	0.84, 0.84, 0.84	Depositor

## 5 Model quality ⓘ

### 5.1 Standard geometry ⓘ

Bond lengths and bond angles in the following residue types are not validated in this section: CMC

The Z score for a bond length (or angle) is the number of standard deviations the observed value is removed from the expected value. A bond length (or angle) with  $|Z| > 5$  is considered an outlier worth inspection. RMSZ is the root-mean-square of all Z scores of the bond lengths (or angles).

Mol	Chain	Bond lengths		Bond angles	
		RMSZ	$\# Z  > 5$	RMSZ	$\# Z  > 5$
1	B	0.26	0/4622	0.45	2/6326 (0.0%)
2	C	0.24	0/455	0.57	0/621
3	A	0.28	0/1138	0.55	1/1555 (0.1%)
4	D	0.91	0/27	0.98	0/35
All	All	0.27	0/6242	0.48	3/8537 (0.0%)

There are no bond length outliers.

All (3) bond angle outliers are listed below:

Mol	Chain	Res	Type	Atoms	Z	Observed(°)	Ideal(°)
1	B	599	ASP	CB-CG-OD1	6.18	123.86	118.30
1	B	653	PRO	CA-N-CD	-5.89	103.26	111.50
3	A	294	ARG	CG-CD-NE	5.49	123.33	111.80

There are no chirality outliers.

There are no planarity outliers.

### 5.2 Too-close contacts ⓘ

In the following table, the Non-H and H(model) columns list the number of non-hydrogen atoms and hydrogen atoms in the chain respectively. The H(added) column lists the number of hydrogen atoms added and optimized by MolProbity. The Clashes column lists the number of clashes within the asymmetric unit, whereas Symm-Clashes lists symmetry-related clashes.

Mol	Chain	Non-H	H(model)	H(added)	Clashes	Symm-Clashes
1	B	4515	0	3910	24	0
2	C	451	0	391	4	0
3	A	1115	0	1032	27	0
4	D	27	0	29	12	0

*Continued on next page...*



*Continued from previous page...*

Mol	Chain	Non-H	H(model)	H(added)	Clashes	Symm-Clashes
5	D	51	0	33	14	0
All	All	6159	0	5395	66	0

The all-atom clashscore is defined as the number of clashes found per 1000 atoms (including hydrogen atoms). The all-atom clashscore for this structure is 6.

All (66) close contacts within the same asymmetric unit are listed below, sorted by their clash magnitude.

Atom-1	Atom-2	Interatomic distance (Å)	Clash overlap (Å)
3:A:235:LEU:CD1	4:D:402:MET:HG2	1.49	1.38
3:A:235:LEU:HD12	4:D:402:MET:HG2	1.36	1.05
3:A:235:LEU:CD1	4:D:402:MET:CG	2.34	1.05
3:A:294:ARG:HH21	3:A:294:ARG:HG3	1.16	1.03
3:A:235:LEU:HD11	4:D:402:MET:HG2	1.47	0.96
5:D:501:CMC:H8A	5:D:501:CMC:H52A	1.46	0.95
3:A:290:ASP:O	3:A:294:ARG:HD3	1.71	0.89
5:D:501:CMC:O9A	5:D:501:CMC:O2B	2.02	0.78
3:A:235:LEU:HD13	4:D:402:MET:HG2	1.62	0.76
5:D:501:CMC:H132	5:D:501:CMC:C7P	2.16	0.76
3:A:235:LEU:HD13	4:D:402:MET:CG	2.15	0.76
3:A:348:TYR:HE2	4:D:402:MET:SD	2.09	0.76
5:D:501:CMC:H72	5:D:501:CMC:H32	1.73	0.69
5:D:501:CMC:H132	5:D:501:CMC:H72	1.75	0.66
3:A:294:ARG:HG3	3:A:294:ARG:NH2	1.98	0.65
3:A:239:TYR:OH	4:D:403:LEU:N	2.30	0.64
3:A:287:LEU:HD22	5:D:501:CMC:H133	1.82	0.60
1:B:398:SER:O	1:B:544:GLN:NE2	2.35	0.59
1:B:56:LEU:HB3	3:A:246:TYR:HD2	1.69	0.58
3:A:235:LEU:HD11	4:D:402:MET:CG	2.21	0.57
3:A:348:TYR:OH	4:D:402:MET:HB2	2.07	0.55
5:D:501:CMC:H132	5:D:501:CMC:N8P	2.22	0.54
3:A:348:TYR:CE2	4:D:402:MET:SD	2.97	0.54
5:D:501:CMC:H72	5:D:501:CMC:CDP	2.39	0.53
3:A:294:ARG:HH21	3:A:294:ARG:CG	2.01	0.52
5:D:501:CMC:H52A	5:D:501:CMC:C8A	2.30	0.52
3:A:340:ARG:HD3	3:A:355:LEU:HD21	1.91	0.51
3:A:332:LEU:HB2	5:D:501:CMC:H51A	1.91	0.51
1:B:510:LEU:HB2	1:B:512:LEU:HD13	1.93	0.51
1:B:56:LEU:HA	1:B:59:ALA:HB3	1.93	0.50
5:D:501:CMC:N8P	5:D:501:CMC:CDP	2.71	0.50
3:A:283:TYR:OH	3:A:321:GLU:OE1	2.25	0.49

*Continued on next page...*

*Continued from previous page...*

Atom-1	Atom-2	Interatomic distance (Å)	Clash overlap (Å)
1:B:106:ILE:HG23	1:B:236:ARG:HE	1.78	0.49
1:B:468:ASP:OD2	1:B:486:ALA:N	2.47	0.48
1:B:670:LEU:HD13	1:B:680:VAL:HG13	1.94	0.48
1:B:420:CYS:SG	1:B:467:VAL:HG13	2.54	0.47
5:D:501:CMC:C7P	5:D:501:CMC:H32	2.36	0.46
1:B:501:ILE:HD11	1:B:529:LEU:HB3	1.98	0.45
2:C:105:PRO:HG2	2:C:108:HIS:HB2	1.99	0.45
3:A:319:VAL:HG12	3:A:358:LYS:HG2	1.98	0.45
1:B:584:ASN:ND2	1:B:665:GLN:OE1	2.46	0.45
1:B:159:ILE:HG21	1:B:247:LEU:HB3	1.99	0.44
1:B:197:LEU:HD23	1:B:197:LEU:HA	1.89	0.44
1:B:501:ILE:HD13	1:B:501:ILE:HA	1.84	0.44
2:C:81:ALA:O	2:C:99:LEU:N	2.49	0.44
1:B:232:ALA:O	1:B:236:ARG:HG3	2.19	0.43
3:A:355:LEU:HD12	3:A:355:LEU:HA	1.86	0.43
3:A:347:TYR:OH	4:D:404:GLY:O	2.32	0.43
1:B:526:SER:HB3	1:B:527:GLU:OE2	2.18	0.43
3:A:269:VAL:HB	3:A:286:MET:HB2	2.01	0.43
3:A:333:TYR:HB3	3:A:338:PHE:HB2	2.00	0.42
1:B:670:LEU:HD23	1:B:670:LEU:HA	1.81	0.42
1:B:55:GLY:O	1:B:57:PHE:N	2.52	0.42
1:B:601:LYS:NZ	1:B:705:SER:O	2.42	0.42
1:B:682:ARG:H	1:B:682:ARG:HG2	1.66	0.41
1:B:407:PRO:HA	1:B:412:TYR:CD2	2.55	0.41
3:A:321:GLU:OE2	3:A:356:ARG:NE	2.52	0.41
1:B:264:LEU:HD23	1:B:264:LEU:HA	1.83	0.41
1:B:443:ARG:HE	1:B:443:ARG:HB3	1.69	0.41
5:D:501:CMC:O2B	5:D:501:CMC:P3B	2.79	0.41
5:D:501:CMC:C7P	5:D:501:CMC:CDP	2.91	0.41
2:C:46:GLU:HA	2:C:49:LEU:HD13	2.03	0.41
2:C:57:MET:HA	2:C:109:ILE:HA	2.03	0.41
3:A:299:GLY:O	3:A:303:VAL:HG23	2.20	0.40
1:B:418:LYS:HA	1:B:418:LYS:HD2	1.88	0.40
1:B:604:LYS:HE2	1:B:604:LYS:HB3	2.00	0.40

There are no symmetry-related clashes.

## 5.3 Torsion angles [i](#)

### 5.3.1 Protein backbone [i](#)

In the following table, the Percentiles column shows the percent Ramachandran outliers of the chain as a percentile score with respect to all PDB entries followed by that with respect to all EM entries.

The Analysed column shows the number of residues for which the backbone conformation was analysed, and the total number of residues.

Mol	Chain	Analysed	Favoured	Allowed	Outliers	Percentiles	
1	B	636/725 (88%)	614 (96%)	22 (4%)	0	100	100
2	C	67/125 (54%)	55 (82%)	12 (18%)	0	100	100
3	A	150/152 (99%)	149 (99%)	1 (1%)	0	100	100
4	D	2/4 (50%)	2 (100%)	0	0	100	100
All	All	855/1006 (85%)	820 (96%)	35 (4%)	0	100	100

There are no Ramachandran outliers to report.

### 5.3.2 Protein sidechains [i](#)

In the following table, the Percentiles column shows the percent sidechain outliers of the chain as a percentile score with respect to all PDB entries followed by that with respect to all EM entries.

The Analysed column shows the number of residues for which the sidechain conformation was analysed, and the total number of residues.

Mol	Chain	Analysed	Rotameric	Outliers	Percentiles	
1	B	373/653 (57%)	361 (97%)	12 (3%)	39	69
2	C	31/103 (30%)	30 (97%)	1 (3%)	39	69
3	A	94/136 (69%)	92 (98%)	2 (2%)	53	77
4	D	3/3 (100%)	3 (100%)	0	100	100
All	All	501/895 (56%)	486 (97%)	15 (3%)	44	70

All (15) residues with a non-rotameric sidechain are listed below:

Mol	Chain	Res	Type
1	B	220	ASP
1	B	281	HIS

*Continued on next page...*

*Continued from previous page...*

Mol	Chain	Res	Type
1	B	329	PHE
1	B	340	CYS
1	B	362	SER
1	B	378	ASP
1	B	398	SER
1	B	412	TYR
1	B	460	LEU
1	B	520	TYR
1	B	526	SER
1	B	591	LYS
2	C	84	PHE
3	A	211	ARG
3	A	294	ARG

Sometimes sidechains can be flipped to improve hydrogen bonding and reduce clashes. All (1) such sidechains are listed below:

Mol	Chain	Res	Type
1	B	544	GLN

### 5.3.3 RNA [i](#)

There are no RNA molecules in this entry.

## 5.4 Non-standard residues in protein, DNA, RNA chains [i](#)

There are no non-standard protein/DNA/RNA residues in this entry.

### 5.5 Carbohydrates [i](#)

There are no monosaccharides in this entry.

## 5.6 Ligand geometry [i](#)

1 ligand is modelled in this entry.

In the following table, the Counts columns list the number of bonds (or angles) for which Mogul statistics could be retrieved, the number of bonds (or angles) that are observed in the model and the number of bonds (or angles) that are defined in the Chemical Component Dictionary. The Link column lists molecule types, if any, to which the group is linked. The Z score for a bond

length (or angle) is the number of standard deviations the observed value is removed from the expected value. A bond length (or angle) with  $|Z| > 2$  is considered an outlier worth inspection. RMSZ is the root-mean-square of all Z scores of the bond lengths (or angles).

Mol	Type	Chain	Res	Link	Bond lengths			Bond angles		
					Counts	RMSZ	$\# Z  > 2$	Counts	RMSZ	$\# Z  > 2$
5	CMC	D	501	4	45,53,54	0.97	1 (2%)	55,78,80	2.10	8 (14%)

In the following table, the Chirals column lists the number of chiral outliers, the number of chiral centers analysed, the number of these observed in the model and the number defined in the Chemical Component Dictionary. Similar counts are reported in the Torsion and Rings columns. '-' means no outliers of that kind were identified.

Mol	Type	Chain	Res	Link	Chirals	Torsions	Rings
5	CMC	D	501	4	-	19/46/67/68	0/3/3/3

All (1) bond length outliers are listed below:

Mol	Chain	Res	Type	Atoms	Z	Observed(Å)	Ideal(Å)
5	D	501	CMC	OAP-CAP	-2.14	1.38	1.42

All (8) bond angle outliers are listed below:

Mol	Chain	Res	Type	Atoms	Z	Observed(°)	Ideal(°)
5	D	501	CMC	O21-C2-C1	-9.45	79.21	125.62
5	D	501	CMC	P2A-O3A-P1A	-7.40	107.43	132.83
5	D	501	CMC	O6A-CCP-CBP	-5.28	102.06	110.55
5	D	501	CMC	C7P-C6P-C5P	-3.03	107.31	112.36
5	D	501	CMC	C2B-C3B-C4B	-2.49	98.81	103.22
5	D	501	CMC	O2A-P1A-O1A	2.46	124.42	112.24
5	D	501	CMC	C5A-C6A-N6A	2.13	123.59	120.35
5	D	501	CMC	OAP-CAP-CBP	-2.01	105.52	110.25

There are no chirality outliers.

All (19) torsion outliers are listed below:

Mol	Chain	Res	Type	Atoms
5	D	501	CMC	C5B-O5B-P1A-O1A
5	D	501	CMC	C5B-O5B-P1A-O3A
5	D	501	CMC	CCP-O6A-P2A-O4A
5	D	501	CMC	CCP-O6A-P2A-O5A
5	D	501	CMC	O9P-C9P-CAP-OAP
5	D	501	CMC	CAP-C9P-N8P-C7P

*Continued on next page...*

*Continued from previous page...*

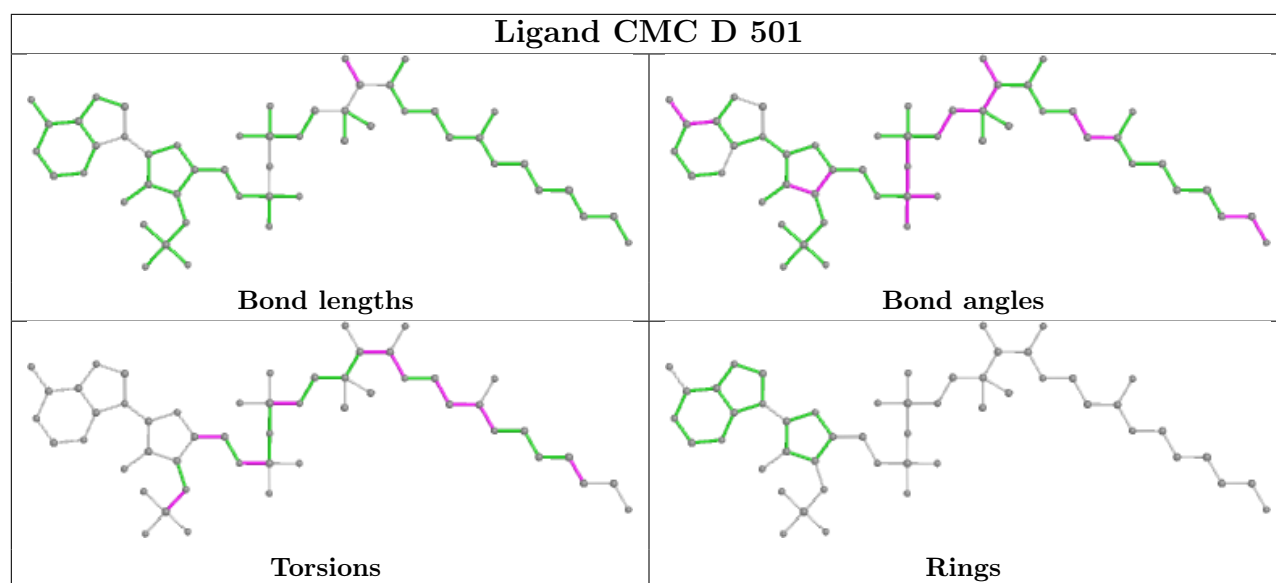
Mol	Chain	Res	Type	Atoms
5	D	501	CMC	C5P-C6P-C7P-N8P
5	D	501	CMC	C6P-C5P-N4P-C3P
5	D	501	CMC	O9P-C9P-N8P-C7P
5	D	501	CMC	O5P-C5P-N4P-C3P
5	D	501	CMC	O9P-C9P-CAP-CBP
5	D	501	CMC	C5B-O5B-P1A-O2A
5	D	501	CMC	C2-C1-S1P-C2P
5	D	501	CMC	O5P-C5P-C6P-C7P
5	D	501	CMC	N4P-C5P-C6P-C7P
5	D	501	CMC	C3B-O3B-P3B-O7A
5	D	501	CMC	C3B-O3B-P3B-O8A
5	D	501	CMC	CCP-O6A-P2A-O3A
5	D	501	CMC	O4B-C4B-C5B-O5B

There are no ring outliers.

1 monomer is involved in 14 short contacts:

Mol	Chain	Res	Type	Clashes	Symm-Clashes
5	D	501	CMC	14	0

The following is a two-dimensional graphical depiction of Mogul quality analysis of bond lengths, bond angles, torsion angles, and ring geometry for all instances of the Ligand of Interest. In addition, ligands with molecular weight > 250 and outliers as shown on the validation Tables will also be included. For torsion angles, if less than 5% of the Mogul distribution of torsion angles is within 10 degrees of the torsion angle in question, then that torsion angle is considered an outlier. Any bond that is central to one or more torsion angles identified as an outlier by Mogul will be highlighted in the graph. For rings, the root-mean-square deviation (RMSD) between the ring in question and similar rings identified by Mogul is calculated over all ring torsion angles. If the average RMSD is greater than 60 degrees and the minimal RMSD between the ring in question and any Mogul-identified rings is also greater than 60 degrees, then that ring is considered an outlier. The outliers are highlighted in purple. The color gray indicates Mogul did not find sufficient equivalents in the CSD to analyse the geometry.



## 5.7 Other polymers [i](#)

There are no such residues in this entry.

## 5.8 Polymer linkage issues [i](#)

There are no chain breaks in this entry.

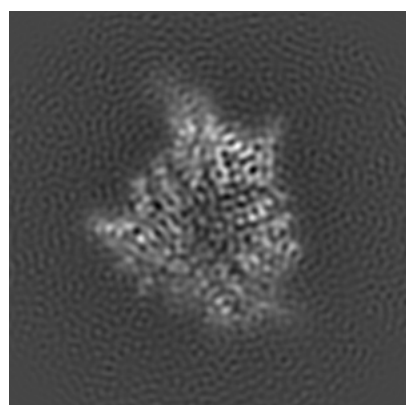
## 6 Map visualisation [i](#)

This section contains visualisations of the EMDB entry EMD-24070. These allow visual inspection of the internal detail of the map and identification of artifacts.

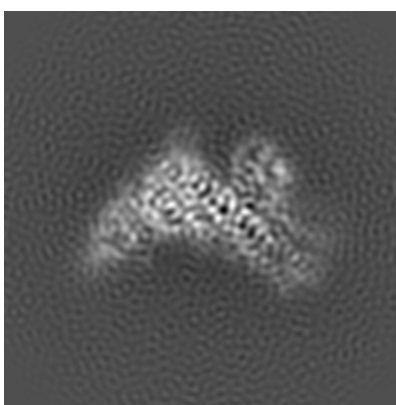
No raw map or half-maps were deposited for this entry and therefore no images, graphs, etc. pertaining to the raw map can be shown.

### 6.1 Orthogonal projections [i](#)

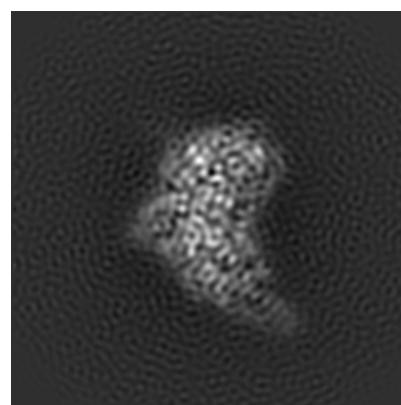
#### 6.1.1 Primary map



X



Y

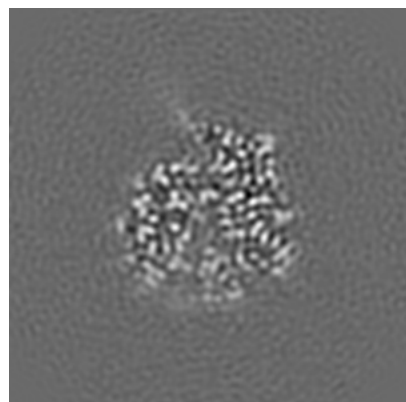


Z

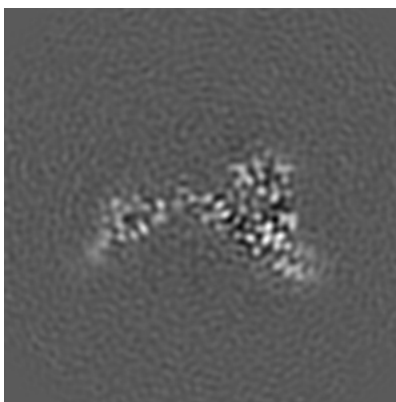
The images above show the map projected in three orthogonal directions.

### 6.2 Central slices [i](#)

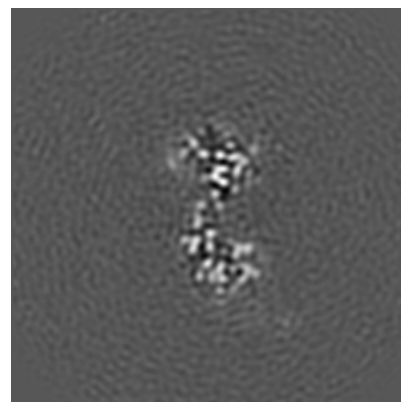
#### 6.2.1 Primary map



X Index: 100



Y Index: 100



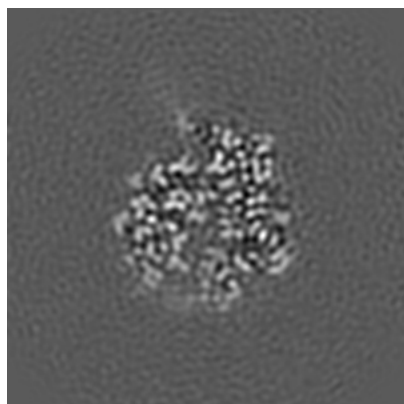
Z Index: 100



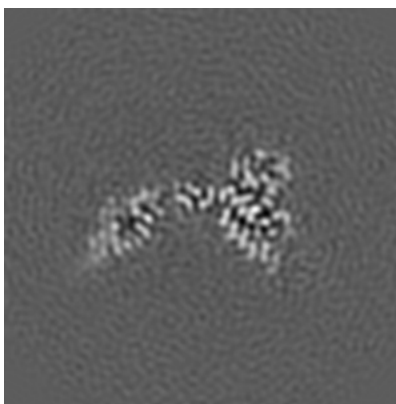
The images above show central slices of the map in three orthogonal directions.

## 6.3 Largest variance slices [i](#)

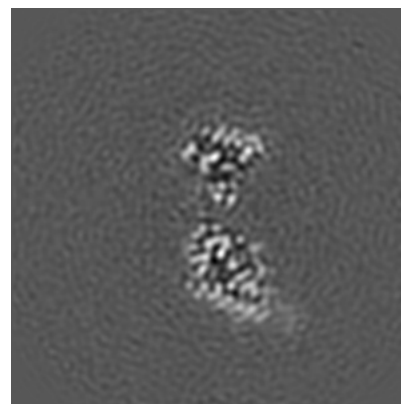
### 6.3.1 Primary map



X Index: 99



Y Index: 106

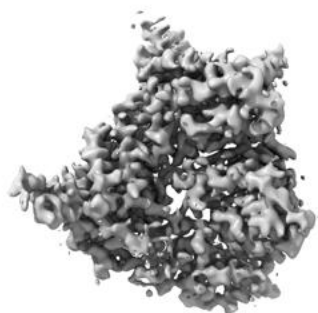


Z Index: 91

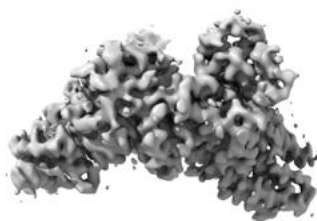
The images above show the largest variance slices of the map in three orthogonal directions.

## 6.4 Orthogonal surface views [i](#)

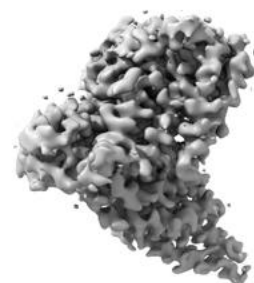
### 6.4.1 Primary map



X



Y



Z

The images above show the 3D surface view of the map at the recommended contour level 0.3. These images, in conjunction with the slice images, may facilitate assessment of whether an appropriate contour level has been provided.

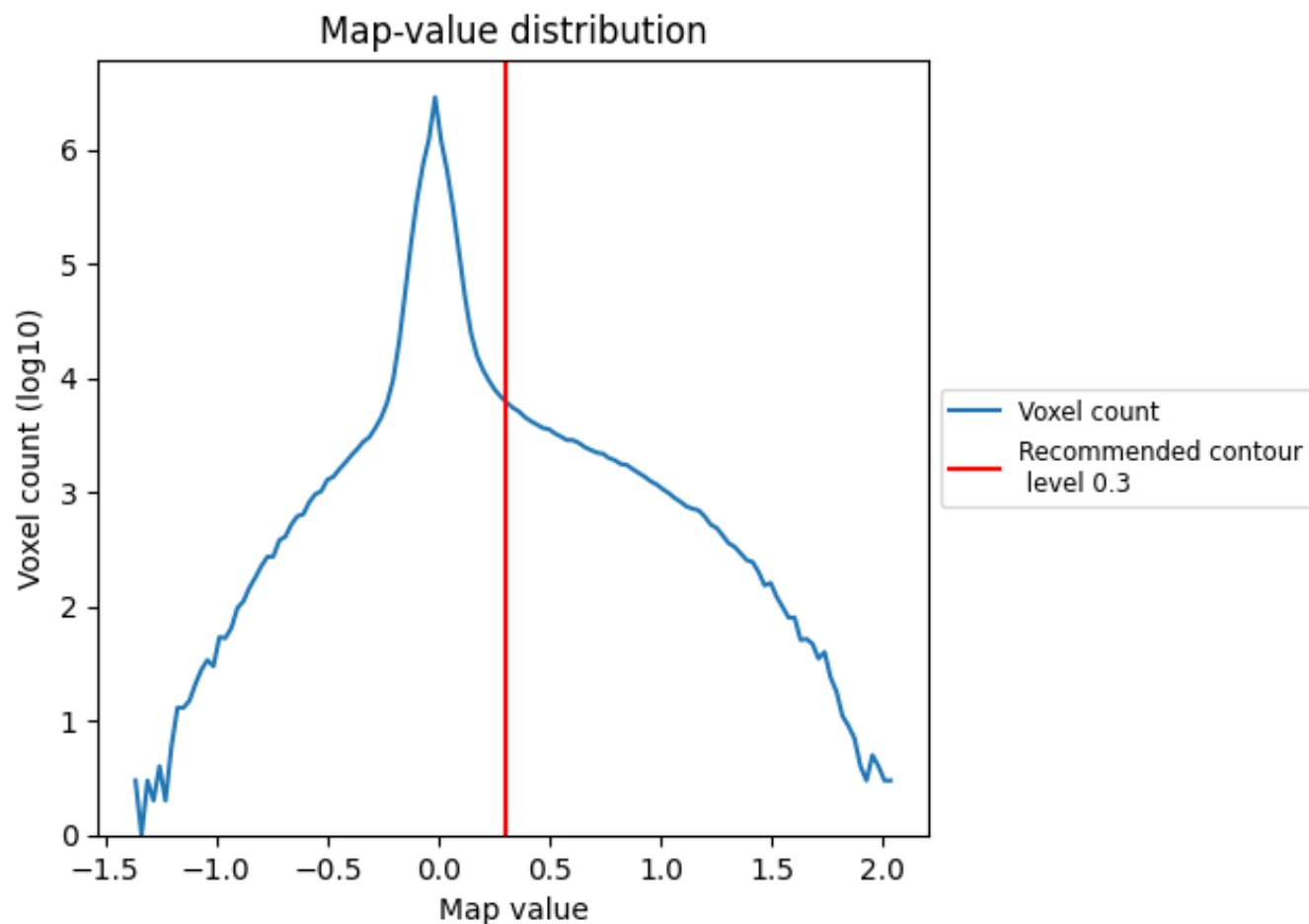
## 6.5 Mask visualisation

This section was not generated. No masks/segmentation were deposited.

## 7 Map analysis [i](#)

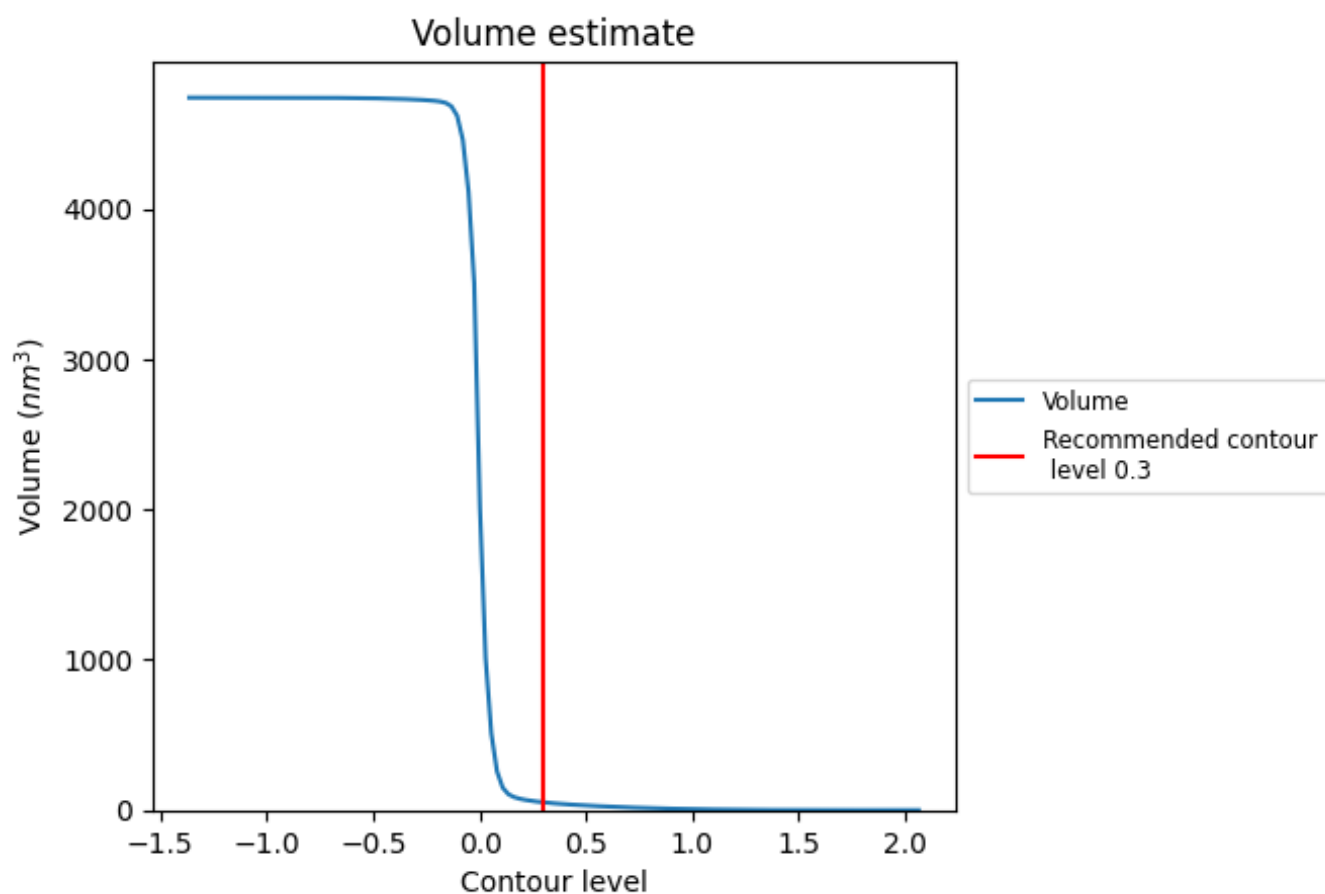
This section contains the results of statistical analysis of the map.

### 7.1 Map-value distribution [i](#)



The map-value distribution is plotted in 128 intervals along the x-axis. The y-axis is logarithmic. A spike in this graph at zero usually indicates that the volume has been masked.

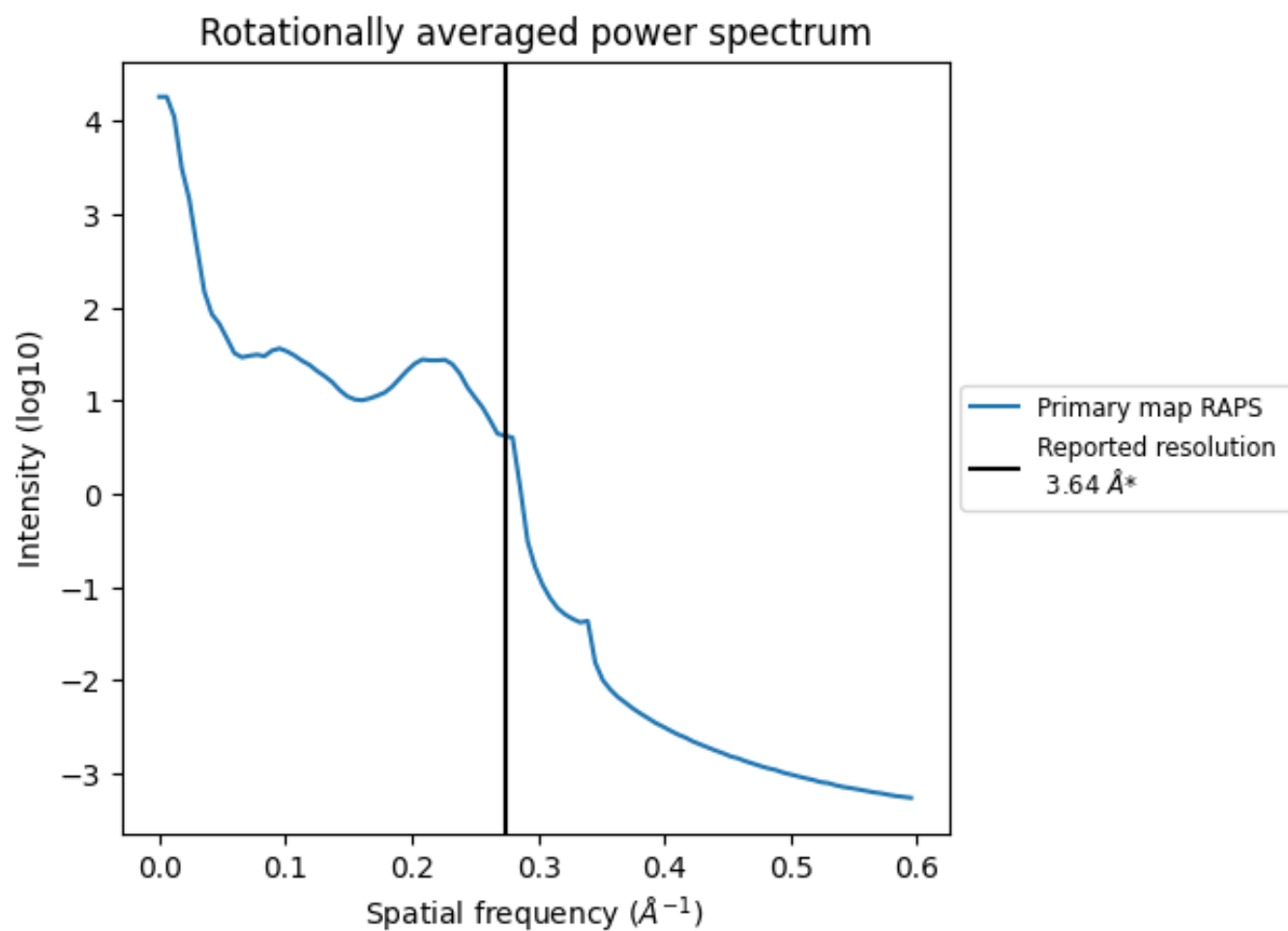
## 7.2 Volume estimate [i](#)



The volume at the recommended contour level is 52  $\text{nm}^3$ ; this corresponds to an approximate mass of 47 kDa.

The volume estimate graph shows how the enclosed volume varies with the contour level. The recommended contour level is shown as a vertical line and the intersection between the line and the curve gives the volume of the enclosed surface at the given level.

### 7.3 Rotationally averaged power spectrum ⓘ



\*Reported resolution corresponds to spatial frequency of 0.275 Å<sup>-1</sup>

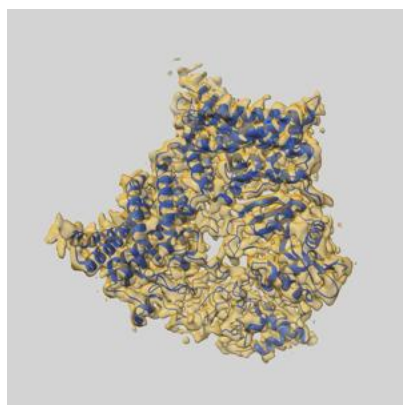
## 8 Fourier-Shell correlation

This section was not generated. No FSC curve or half-maps provided.

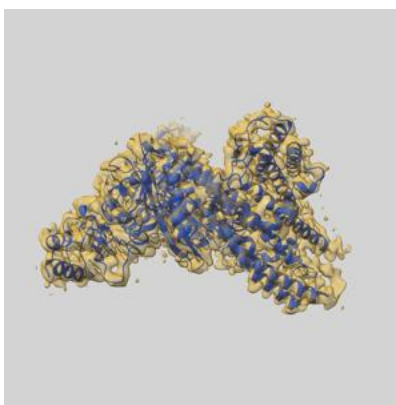
## 9 Map-model fit [i](#)

This section contains information regarding the fit between EMDB map EMD-24070 and PDB model 7MX2. Per-residue inclusion information can be found in section [3](#) on page [5](#).

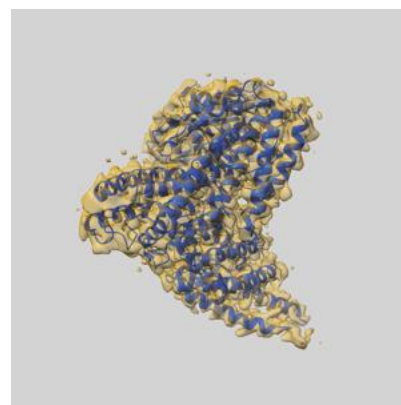
### 9.1 Map-model overlay [i](#)



X



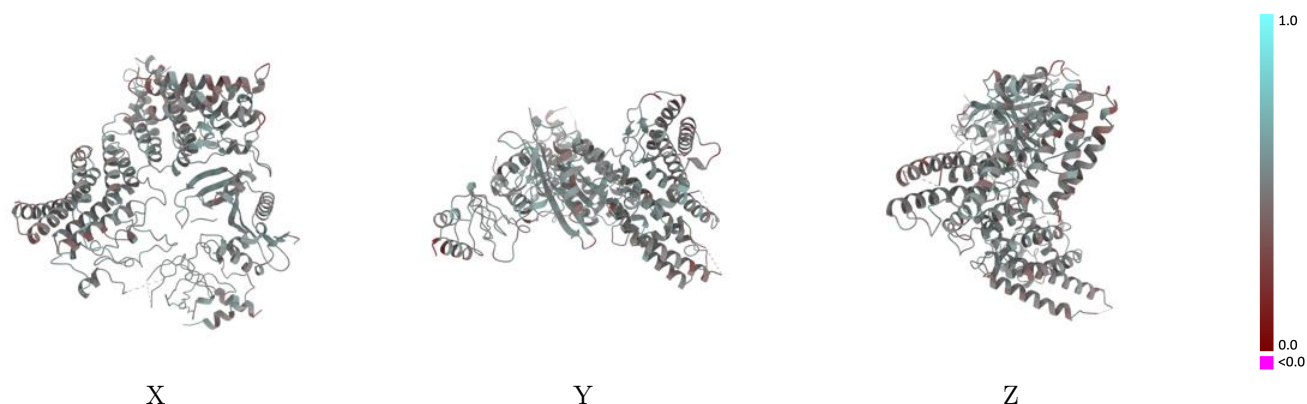
Y



Z

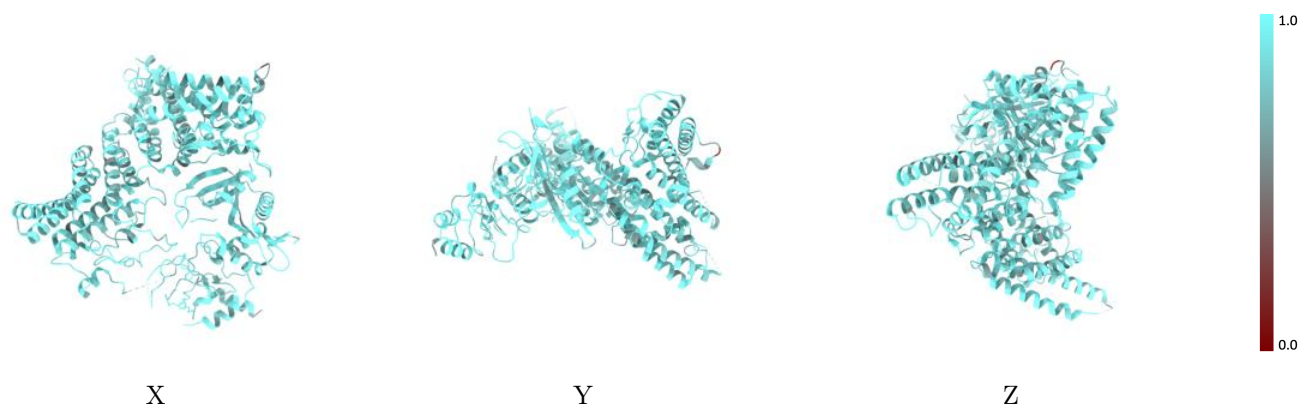
The images above show the 3D surface view of the map at the recommended contour level 0.3 at 50% transparency in yellow overlaid with a ribbon representation of the model coloured in blue. These images allow for the visual assessment of the quality of fit between the atomic model and the map.

## 9.2 Q-score mapped to coordinate model [i](#)



The images above show the model with each residue coloured according to its Q-score. This shows their resolvability in the map with higher Q-score values reflecting better resolvability. Please note: Q-score is calculating the resolvability of atoms, and thus high values are only expected at resolutions at which atoms can be resolved. Low Q-score values may therefore be expected for many entries.

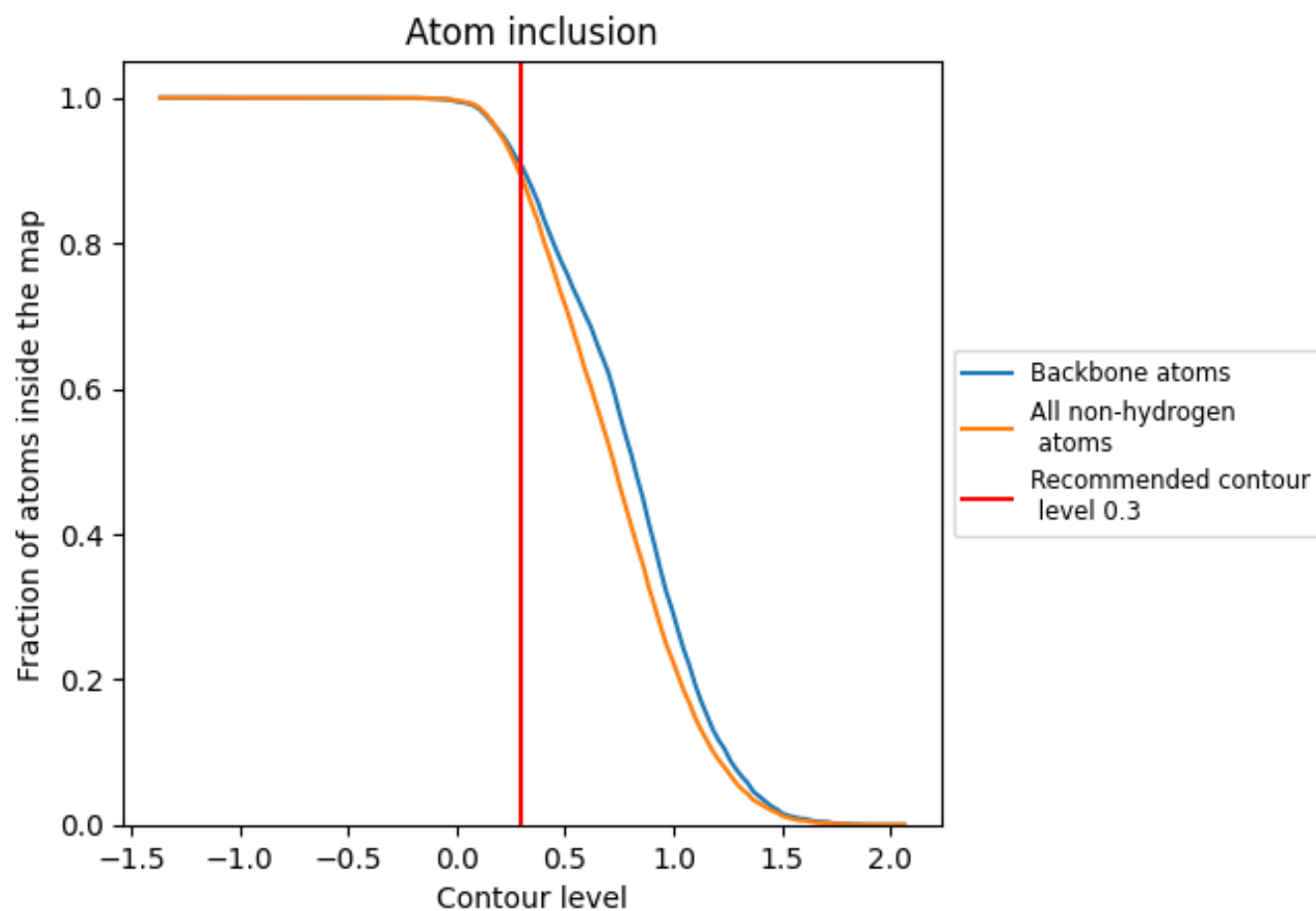
## 9.3 Atom inclusion mapped to coordinate model [i](#)



The images above show the model with each residue coloured according to its atom inclusion. This shows to what extent they are inside the map at the recommended contour level (0.3).



## 9.4 Atom inclusion [i](#)



At the recommended contour level, 91% of all backbone atoms, 89% of all non-hydrogen atoms, are inside the map.

9.5 Map-model fit summary ⓘ

The table lists the average atom inclusion at the recommended contour level (0.3) and Q-score for the entire model and for each chain.

Chain	Atom inclusion	Q-score
All	<div><div></div></div> 0.8896	<div><div></div></div> 0.4950
A	<div><div></div></div> 0.9066	<div><div></div></div> 0.5090
B	<div><div></div></div> 0.8849	<div><div></div></div> 0.4910
C	<div><div></div></div> 0.8876	<div><div></div></div> 0.4900
D	<div><div></div></div> 0.9359	<div><div></div></div> 0.5320

