



Full wwPDB X-ray Structure Validation Report ⓘ

May 23, 2022 – 12:06 PM EDT

PDB ID : 7MY0
Title : Sy-CrtE IPP structure
Authors : Peat, T.S.; Newman, J.
Deposited on : 2021-05-19
Resolution : 1.37 Å(reported)

This is a Full wwPDB X-ray Structure Validation Report for a publicly released PDB entry.

We welcome your comments at validation@mail.wwpdb.org

A user guide is available at

<https://www.wwpdb.org/validation/2017/XrayValidationReportHelp>

with specific help available everywhere you see the ⓘ symbol.

The following versions of software and data (see [references ⓘ](#)) were used in the production of this report:

MolProbity : 4.02b-467
Mogul : 1.8.5 (274361), CSD as541be (2020)
Xtriage (Phenix) : 1.13
EDS : 2.28.1
Percentile statistics : 20191225.v01 (using entries in the PDB archive December 25th 2019)
Refmac : 5.8.0158
CCP4 : 7.0.044 (Gargrove)
Ideal geometry (proteins) : Engh & Huber (2001)
Ideal geometry (DNA, RNA) : Parkinson et al. (1996)
Validation Pipeline (wwPDB-VP) : 2.28.1

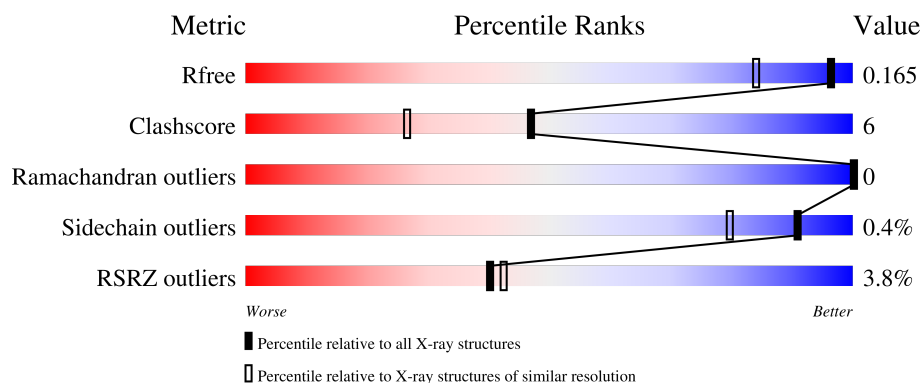
1 Overall quality at a glance

The following experimental techniques were used to determine the structure:

X-RAY DIFFRACTION

The reported resolution of this entry is 1.37 Å.

Percentile scores (ranging between 0-100) for global validation metrics of the entry are shown in the following graphic. The table shows the number of entries on which the scores are based.



Metric	Whole archive (#Entries)	Similar resolution (#Entries, resolution range(Å))
R_{free}	130704	2907 (1.40-1.36)
Clashscore	141614	3037 (1.40-1.36)
Ramachandran outliers	138981	2970 (1.40-1.36)
Sidechain outliers	138945	2969 (1.40-1.36)
RSRZ outliers	127900	2846 (1.40-1.36)

The table below summarises the geometric issues observed across the polymeric chains and their fit to the electron density. The red, orange, yellow and green segments of the lower bar indicate the fraction of residues that contain outliers for ≥ 3 , 2, 1 and 0 types of geometric quality criteria respectively. A grey segment represents the fraction of residues that are not modelled. The numeric value for each fraction is indicated below the corresponding segment, with a dot representing fractions $\leq 5\%$. The upper red bar (where present) indicates the fraction of residues that have poor fit to the electron density. The numeric value is given above the bar.

Mol	Chain	Length	Quality of chain
1	A	310	<div> <div>3%</div> <div>82%</div> <div>9%</div> <div>8%</div> </div>
1	B	310	<div> <div>5%</div> <div>86%</div> <div>6%</div> <div>7%</div> </div>

The following table lists non-polymeric compounds, carbohydrate monomers and non-standard residues in protein, DNA, RNA chains that are outliers for geometric or electron-density-fit criteria:

Mol	Type	Chain	Res	Chirality	Geometry	Clashes	Electron density
3	GOL	A	402	-	-	X	-

2 Entry composition

There are 5 unique types of molecules in this entry. The entry contains 5322 atoms, of which 0 are hydrogens and 0 are deuteriums.

In the tables below, the ZeroOcc column contains the number of atoms modelled with zero occupancy, the AltConf column contains the number of residues with at least one atom in alternate conformation and the Trace column contains the number of residues modelled with at most 2 atoms.

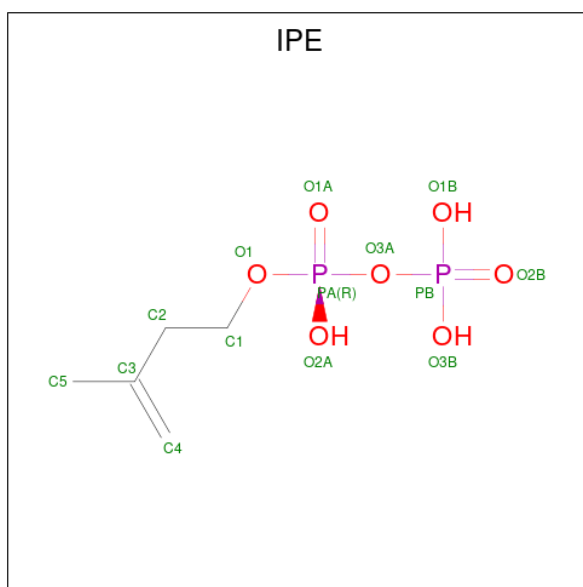
- Molecule 1 is a protein called Geranylgeranyl pyrophosphate synthase.

Mol	Chain	Residues	Atoms					ZeroOcc	AltConf	Trace
1	A	286	Total	C	N	O	S	0	22	0
			2328	1465	400	453	10			
1	B	288	Total	C	N	O	S	0	19	0
			2331	1465	406	451	9			

There are 16 discrepancies between the modelled and reference sequences:

Chain	Residue	Modelled	Actual	Comment	Reference
A	303	LEU	-	expression tag	UNP P72683
A	304	GLU	-	expression tag	UNP P72683
A	305	HIS	-	expression tag	UNP P72683
A	306	HIS	-	expression tag	UNP P72683
A	307	HIS	-	expression tag	UNP P72683
A	308	HIS	-	expression tag	UNP P72683
A	309	HIS	-	expression tag	UNP P72683
A	310	HIS	-	expression tag	UNP P72683
B	303	LEU	-	expression tag	UNP P72683
B	304	GLU	-	expression tag	UNP P72683
B	305	HIS	-	expression tag	UNP P72683
B	306	HIS	-	expression tag	UNP P72683
B	307	HIS	-	expression tag	UNP P72683
B	308	HIS	-	expression tag	UNP P72683
B	309	HIS	-	expression tag	UNP P72683
B	310	HIS	-	expression tag	UNP P72683

- Molecule 2 is 3-METHYLBUT-3-ENYL TRIHYDROGEN DIPHOSPHATE (three-letter code: IPE) (formula: C₅H₁₂O₇P₂).



Mol	Chain	Residues	Atoms				ZeroOcc	AltConf
2	A	1	Total	C	O	P	0	0
			14	5	7	2		
2	B	1	Total	C	O	P	0	0
			14	5	7	2		

- Molecule 3 is GLYCEROL (three-letter code: GOL) (formula: $C_3H_8O_3$).



Mol	Chain	Residues	Atoms			ZeroOcc	AltConf
3	A	1	Total	C	O	0	0
			6	3	3		

- Molecule 4 is MAGNESIUM ION (three-letter code: MG) (formula: Mg).

Mol	Chain	Residues	Atoms		ZeroOcc	AltConf
4	A	4	Total 4	Mg 4	0	0
4	B	4	Total 4	Mg 4	0	0

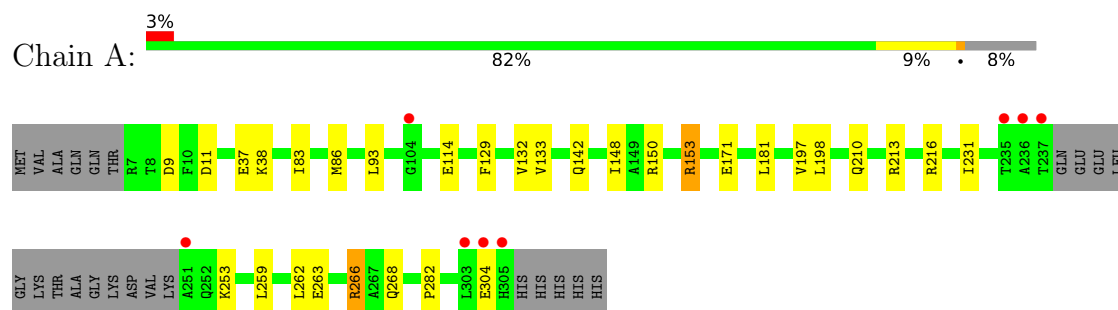
- Molecule 5 is water.

Mol	Chain	Residues	Atoms		ZeroOcc	AltConf
5	A	322	Total 322	O 322	0	0
5	B	299	Total 299	O 299	0	0

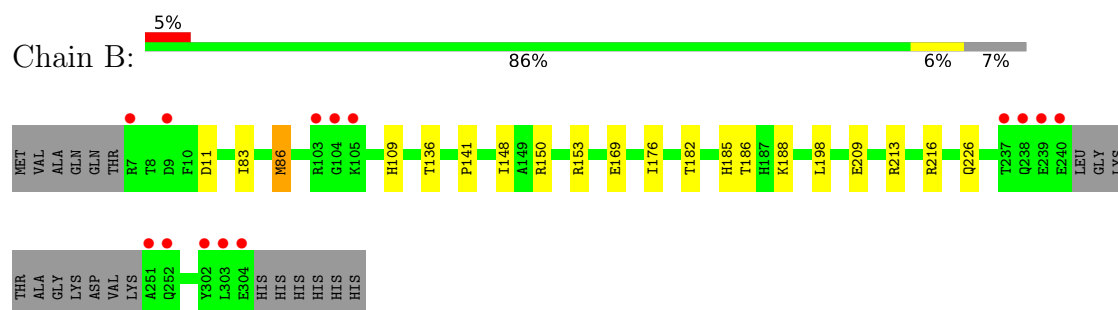
3 Residue-property plots [i](#)

These plots are drawn for all protein, RNA, DNA and oligosaccharide chains in the entry. The first graphic for a chain summarises the proportions of the various outlier classes displayed in the second graphic. The second graphic shows the sequence view annotated by issues in geometry and electron density. Residues are color-coded according to the number of geometric quality criteria for which they contain at least one outlier: green = 0, yellow = 1, orange = 2 and red = 3 or more. A red dot above a residue indicates a poor fit to the electron density ($RSRZ > 2$). Stretches of 2 or more consecutive residues without any outlier are shown as a green connector. Residues present in the sample, but not in the model, are shown in grey.

- Molecule 1: Geranylgeranyl pyrophosphate synthase



- Molecule 1: Geranylgeranyl pyrophosphate synthase



4 Data and refinement statistics

Property	Value	Source
Space group	C 1 2 1	Depositor
Cell constants a, b, c, α , β , γ	61.43Å 73.64Å 132.23Å 90.00° 95.21° 90.00°	Depositor
Resolution (Å)	43.93 – 1.37 43.89 – 1.37	Depositor EDS
% Data completeness (in resolution range)	99.7 (43.93-1.37) 99.7 (43.89-1.37)	Depositor EDS
R_{merge}	0.19	Depositor
R_{sym}	(Not available)	Depositor
$\langle I/\sigma(I) \rangle$ ¹	1.67 (at 1.37Å)	Xtriage
Refinement program	REFMAC 5.8.0267	Depositor
R, R_{free}	0.128 , 0.160 0.136 , 0.165	Depositor DCC
R_{free} test set	6117 reflections (4.99%)	wwPDB-VP
Wilson B-factor (Å ²)	10.9	Xtriage
Anisotropy	0.937	Xtriage
Bulk solvent k_{sol} (e/Å ³), B_{sol} (Å ²)	0.35 , 40.6	EDS
L-test for twinning ²	$\langle L \rangle = 0.49$, $\langle L^2 \rangle = 0.32$	Xtriage
Estimated twinning fraction	No twinning to report.	Xtriage
F_o, F_c correlation	0.98	EDS
Total number of atoms	5322	wwPDB-VP
Average B, all atoms (Å ²)	18.0	wwPDB-VP

Xtriage's analysis on translational NCS is as follows: *The analyses of the Patterson function reveals a significant off-origin peak that is 61.49 % of the origin peak, indicating pseudo-translational symmetry. The chance of finding a peak of this or larger height randomly in a structure without pseudo-translational symmetry is equal to 1.3000e-05. The detected translational NCS is most likely also responsible for the elevated intensity ratio.*

¹Intensities estimated from amplitudes.

²Theoretical values of $\langle |L| \rangle$, $\langle L^2 \rangle$ for acentric reflections are 0.5, 0.333 respectively for untwinned datasets, and 0.375, 0.2 for perfectly twinned datasets.

5 Model quality

5.1 Standard geometry

Bond lengths and bond angles in the following residue types are not validated in this section: GOL, MG, IPE

The Z score for a bond length (or angle) is the number of standard deviations the observed value is removed from the expected value. A bond length (or angle) with $|Z| > 5$ is considered an outlier worth inspection. RMSZ is the root-mean-square of all Z scores of the bond lengths (or angles).

Mol	Chain	Bond lengths		Bond angles	
		RMSZ	$\# Z > 5$	RMSZ	$\# Z > 5$
1	A	0.87	2/2360 (0.1%)	0.90	6/3204 (0.2%)
1	B	0.85	1/2365 (0.0%)	0.91	7/3208 (0.2%)
All	All	0.86	3/4725 (0.1%)	0.90	13/6412 (0.2%)

All (3) bond length outliers are listed below:

Mol	Chain	Res	Type	Atoms	Z	Observed(Å)	Ideal(Å)
1	A	304	GLU	C-N	7.58	1.51	1.34
1	B	169	GLU	CD-OE1	5.36	1.31	1.25
1	A	37	GLU	CD-OE1	5.31	1.31	1.25

All (13) bond angle outliers are listed below:

Mol	Chain	Res	Type	Atoms	Z	Observed(°)	Ideal(°)
1	A	150	ARG	NE-CZ-NH2	-9.26	115.67	120.30
1	B	150	ARG	NE-CZ-NH2	-9.24	115.68	120.30
1	A	153[A]	ARG	NE-CZ-NH2	-7.43	116.59	120.30
1	A	153[B]	ARG	NE-CZ-NH2	-7.43	116.59	120.30
1	A	216	ARG	NE-CZ-NH1	6.67	123.64	120.30
1	A	216	ARG	NE-CZ-NH2	-6.35	117.13	120.30
1	B	86[A]	MET	CG-SD-CE	6.06	109.89	100.20
1	B	86[B]	MET	CG-SD-CE	6.06	109.89	100.20
1	A	266	ARG	NE-CZ-NH1	-5.71	117.45	120.30
1	B	153[A]	ARG	NE-CZ-NH2	-5.41	117.60	120.30
1	B	153[B]	ARG	NE-CZ-NH2	-5.41	117.60	120.30
1	B	216[A]	ARG	NE-CZ-NH2	-5.29	117.66	120.30
1	B	216[B]	ARG	NE-CZ-NH2	-5.29	117.66	120.30

There are no chirality outliers.

There are no planarity outliers.

5.2 Too-close contacts ⓘ

In the following table, the Non-H and H(model) columns list the number of non-hydrogen atoms and hydrogen atoms in the chain respectively. The H(added) column lists the number of hydrogen atoms added and optimized by MolProbity. The Clashes column lists the number of clashes within the asymmetric unit, whereas Symm-Clashes lists symmetry-related clashes.

Mol	Chain	Non-H	H(model)	H(added)	Clashes	Symm-Clashes
1	A	2328	0	2332	44	1
1	B	2331	0	2330	14	0
2	A	14	0	9	3	0
2	B	14	0	9	0	0
3	A	6	0	8	17	0
4	A	4	0	0	0	0
4	B	4	0	0	0	0
5	A	322	0	0	8	2
5	B	299	0	0	5	1
All	All	5322	0	4688	59	3

The all-atom clashscore is defined as the number of clashes found per 1000 atoms (including hydrogen atoms). The all-atom clashscore for this structure is 6.

All (59) close contacts within the same asymmetric unit are listed below, sorted by their clash magnitude.

Atom-1	Atom-2	Interatomic distance (Å)	Clash overlap (Å)
1:A:213[B]:ARG:CZ	3:A:402:GOL:H31	1.58	1.34
1:A:213[B]:ARG:NH2	1:A:282:PRO:HB2	1.51	1.26
1:A:213[B]:ARG:NH1	3:A:402:GOL:H31	1.62	1.15
1:A:213[B]:ARG:NH2	3:A:402:GOL:H31	1.65	1.10
1:A:213[B]:ARG:HH21	1:A:282:PRO:HB2	1.00	1.09
1:A:213[B]:ARG:NH1	3:A:402:GOL:C3	2.16	1.07
1:A:213[B]:ARG:CZ	3:A:402:GOL:C3	2.32	1.07
2:A:401:IPE:H53	5:A:778:HOH:O	1.70	0.90
1:B:213[B]:ARG:NH2	5:B:502:HOH:O	2.09	0.85
1:B:11:ASP:OD2	5:B:501:HOH:O	1.96	0.83
1:A:213[B]:ARG:NH1	3:A:402:GOL:C2	2.43	0.81
1:A:262[B]:LEU:HD21	1:A:266:ARG:NH1	1.98	0.79
2:A:401:IPE:O2A	5:A:502:HOH:O	2.03	0.77
1:A:213[B]:ARG:HH12	3:A:402:GOL:C1	2.03	0.70
1:A:11:ASP:OD2	5:A:503:HOH:O	2.10	0.68
1:A:213[B]:ARG:HH21	1:A:282:PRO:CB	1.94	0.67
1:A:213[B]:ARG:HH12	3:A:402:GOL:C2	2.05	0.67
1:A:268[B]:GLN:HG3	5:A:642:HOH:O	1.95	0.65

Continued on next page...

Continued from previous page...

Atom-1	Atom-2	Interatomic distance (Å)	Clash overlap (Å)
1:A:213[B]:ARG:HH12	3:A:402:GOL:H31	1.56	0.64
2:A:401:IPE:PA	5:A:502:HOH:O	2.54	0.64
1:A:129:PHE:O	1:A:132[B]:VAL:HG22	1.97	0.63
1:A:213[B]:ARG:CZ	3:A:402:GOL:O3	2.47	0.62
1:A:213[B]:ARG:HH22	3:A:402:GOL:H31	1.59	0.61
1:B:185:HIS:NE2	1:B:226[B]:GLN:HG2	2.16	0.61
1:A:9[B]:ASP:OD2	5:A:504:HOH:O	2.16	0.60
1:B:185:HIS:CD2	1:B:226[B]:GLN:HG2	2.36	0.60
1:A:213[B]:ARG:NH1	3:A:402:GOL:H2	2.17	0.59
1:A:213[B]:ARG:NH2	1:A:282:PRO:CB	2.46	0.58
1:A:213[B]:ARG:NH2	3:A:402:GOL:C3	2.55	0.57
1:B:185:HIS:CE1	1:B:226[B]:GLN:HG2	2.40	0.56
1:B:109[B]:HIS:HE1	5:B:562:HOH:O	1.89	0.56
1:A:181[B]:LEU:HD21	5:A:651:HOH:O	2.07	0.55
1:B:209:GLU:HG2	1:B:213[B]:ARG:NH2	2.22	0.54
1:A:148[B]:ILE:HD13	1:B:148:ILE:HG21	1.88	0.54
1:A:210:GLN:HG2	3:A:402:GOL:H2	1.88	0.54
1:A:142:GLN:NE2	1:B:141[B]:PRO:HG3	2.22	0.54
1:A:210:GLN:CG	3:A:402:GOL:H2	2.39	0.52
1:A:213[B]:ARG:HH12	3:A:402:GOL:H11	1.73	0.49
1:A:132[B]:VAL:HG23	1:A:133:VAL:N	2.28	0.49
1:A:171:GLU:CG	1:A:253:LYS:HE2	2.43	0.49
1:A:197:VAL:HG23	1:A:198[B]:LEU:HD12	1.94	0.48
1:A:38:LYS:NZ	5:A:510:HOH:O	2.46	0.48
1:B:176[B]:ILE:HD13	5:B:682:HOH:O	2.15	0.46
1:A:171:GLU:HG3	1:A:253:LYS:HE2	1.98	0.46
1:B:182:THR:O	1:B:186:THR:HG23	2.15	0.46
1:A:210:GLN:HG2	1:A:213[B]:ARG:HH11	1.81	0.46
1:A:93:LEU:HD22	1:A:114[B]:GLU:HG3	1.99	0.45
1:A:83:ILE:O	1:A:86[B]:MET:HG3	2.17	0.45
1:A:181[B]:LEU:HD12	1:A:259:LEU:HD12	1.97	0.45
1:B:83:ILE:O	1:B:86[B]:MET:HG3	2.17	0.44
1:A:171:GLU:HG2	1:A:253:LYS:CE	2.48	0.44
1:A:262[B]:LEU:CD2	1:A:266:ARG:NH1	2.76	0.43
1:A:231:ILE:HG23	1:A:262[B]:LEU:HD11	2.01	0.43
1:A:181[B]:LEU:HA	1:A:181[B]:LEU:HD23	1.75	0.43
1:A:210:GLN:HE21	3:A:402:GOL:H2	1.83	0.42
1:A:262[B]:LEU:HG	1:A:266:ARG:CZ	2.49	0.42
1:B:188:LYS:HE2	5:B:718:HOH:O	2.20	0.42
1:B:198[A]:LEU:HD23	1:B:198[A]:LEU:HA	1.87	0.40
1:A:213[B]:ARG:HH22	1:A:282:PRO:HB2	1.64	0.40

All (3) symmetry-related close contacts are listed below. The label for Atom-2 includes the symmetry operator and encoded unit-cell translations to be applied.

Atom-1	Atom-2	Interatomic distance (Å)	Clash overlap (Å)
5:A:503:HOH:O	5:A:662:HOH:O[2_655]	2.05	0.15
1:A:263:GLU:OE1	5:A:767:HOH:O[4_545]	2.11	0.09
5:B:706:HOH:O	5:B:734:HOH:O[4_556]	2.12	0.08

5.3 Torsion angles [i](#)

5.3.1 Protein backbone [i](#)

In the following table, the Percentiles column shows the percent Ramachandran outliers of the chain as a percentile score with respect to all X-ray entries followed by that with respect to entries of similar resolution.

The Analysed column shows the number of residues for which the backbone conformation was analysed, and the total number of residues.

Mol	Chain	Analysed	Favoured	Allowed	Outliers	Percentiles	
1	A	304/310 (98%)	303 (100%)	1 (0%)	0	100	100
1	B	303/310 (98%)	302 (100%)	1 (0%)	0	100	100
All	All	607/620 (98%)	605 (100%)	2 (0%)	0	100	100

There are no Ramachandran outliers to report.

5.3.2 Protein sidechains [i](#)

In the following table, the Percentiles column shows the percent sidechain outliers of the chain as a percentile score with respect to all X-ray entries followed by that with respect to entries of similar resolution.

The Analysed column shows the number of residues for which the sidechain conformation was analysed, and the total number of residues.

Mol	Chain	Analysed	Rotameric	Outliers	Percentiles	
1	A	244/243 (100%)	242 (99%)	2 (1%)	81	61
1	B	242/243 (100%)	241 (100%)	1 (0%)	91	80
All	All	486/486 (100%)	483 (99%)	3 (1%)	91	70

All (3) residues with a non-rotameric sidechain are listed below:

Mol	Chain	Res	Type
1	A	153[A]	ARG
1	A	153[B]	ARG
1	B	136	THR

Sometimes sidechains can be flipped to improve hydrogen bonding and reduce clashes. All (1) such sidechains are listed below:

Mol	Chain	Res	Type
1	A	226	GLN

5.3.3 RNA [i](#)

There are no RNA molecules in this entry.

5.4 Non-standard residues in protein, DNA, RNA chains [i](#)

There are no non-standard protein/DNA/RNA residues in this entry.

5.5 Carbohydrates [i](#)

There are no monosaccharides in this entry.

5.6 Ligand geometry [i](#)

Of 11 ligands modelled in this entry, 8 are monoatomic - leaving 3 for Mogul analysis.

In the following table, the Counts columns list the number of bonds (or angles) for which Mogul statistics could be retrieved, the number of bonds (or angles) that are observed in the model and the number of bonds (or angles) that are defined in the Chemical Component Dictionary. The Link column lists molecule types, if any, to which the group is linked. The Z score for a bond length (or angle) is the number of standard deviations the observed value is removed from the expected value. A bond length (or angle) with $|Z| > 2$ is considered an outlier worth inspection. RMSZ is the root-mean-square of all Z scores of the bond lengths (or angles).

Mol	Type	Chain	Res	Link	Bond lengths			Bond angles		
					Counts	RMSZ	$\# Z > 2$	Counts	RMSZ	$\# Z > 2$
2	IPE	A	401	4	11,13,13	1.11	1 (9%)	15,19,19	2.05	2 (13%)
2	IPE	B	401	4	11,13,13	0.74	0	15,19,19	1.07	1 (6%)
3	GOL	A	402	-	5,5,5	0.51	0	5,5,5	0.89	0

In the following table, the Chirals column lists the number of chiral outliers, the number of chiral

centers analysed, the number of these observed in the model and the number defined in the Chemical Component Dictionary. Similar counts are reported in the Torsion and Rings columns. '-' means no outliers of that kind were identified.

Mol	Type	Chain	Res	Link	Chirals	Torsions	Rings
2	IPE	A	401	4	-	8/13/13/13	-
2	IPE	B	401	4	-	3/13/13/13	-
3	GOL	A	402	-	-	2/4/4/4	-

All (1) bond length outliers are listed below:

Mol	Chain	Res	Type	Atoms	Z	Observed(Å)	Ideal(Å)
2	A	401	IPE	PB-O1B	-2.30	1.46	1.54

All (3) bond angle outliers are listed below:

Mol	Chain	Res	Type	Atoms	Z	Observed(°)	Ideal(°)
2	A	401	IPE	O2A-PA-O1	5.97	135.48	107.75
2	B	401	IPE	O1-PA-O1A	2.61	119.27	109.07
2	A	401	IPE	O1-C1-C2	2.50	118.87	108.64

There are no chirality outliers.

All (13) torsion outliers are listed below:

Mol	Chain	Res	Type	Atoms
2	A	401	IPE	C1-C2-C3-C4
2	A	401	IPE	C1-C2-C3-C5
2	A	401	IPE	PA-O3A-PB-O1B
2	A	401	IPE	PA-O3A-PB-O3B
2	B	401	IPE	C1-C2-C3-C4
2	B	401	IPE	C1-C2-C3-C5
3	A	402	GOL	O1-C1-C2-C3
3	A	402	GOL	O1-C1-C2-O2
2	A	401	IPE	O1-C1-C2-C3
2	B	401	IPE	PA-O3A-PB-O3B
2	A	401	IPE	PB-O3A-PA-O2A
2	A	401	IPE	PB-O3A-PA-O1A
2	A	401	IPE	C2-C1-O1-PA

There are no ring outliers.

2 monomers are involved in 20 short contacts:

Mol	Chain	Res	Type	Clashes	Symm-Clashes
2	A	401	IPE	3	0
3	A	402	GOL	17	0

5.7 Other polymers [i](#)

There are no such residues in this entry.

5.8 Polymer linkage issues [i](#)

There are no chain breaks in this entry.

6 Fit of model and data

6.1 Protein, DNA and RNA chains

In the following table, the column labelled ‘#RSRZ > 2’ contains the number (and percentage) of RSRZ outliers, followed by percent RSRZ outliers for the chain as percentile scores relative to all X-ray entries and entries of similar resolution. The OWAB column contains the minimum, median, 95th percentile and maximum values of the occupancy-weighted average B-factor per residue. The column labelled ‘Q < 0.9’ lists the number of (and percentage) of residues with an average occupancy less than 0.9.

Mol	Chain	Analysed	<RSRZ>	#RSRZ>2	OWAB(Å ²)	Q<0.9
1	A	286/310 (92%)	0.23	8 (2%) 53 55	9, 14, 31, 60	0
1	B	288/310 (92%)	0.23	14 (4%) 29 30	9, 14, 32, 67	0
All	All	574/620 (92%)	0.23	22 (3%) 40 42	9, 14, 32, 67	0

All (22) RSRZ outliers are listed below:

Mol	Chain	Res	Type	RSRZ
1	B	237	THR	6.2
1	B	251	ALA	5.9
1	B	239	GLU	5.6
1	A	236	ALA	4.7
1	A	235	THR	4.5
1	A	303	LEU	4.5
1	B	104	GLY	4.3
1	A	251	ALA	4.1
1	A	237	THR	3.8
1	B	238	GLN	3.5
1	A	305	HIS	3.4
1	B	252	GLN	3.0
1	A	304	GLU	2.9
1	B	303	LEU	2.9
1	B	103	ARG	2.7
1	B	9	ASP	2.6
1	B	240	GLU	2.5
1	A	104	GLY	2.5
1	B	304	GLU	2.3
1	B	7	ARG	2.2
1	B	105	LYS	2.1
1	B	302	TYR	2.1

6.2 Non-standard residues in protein, DNA, RNA chains [i](#)

There are no non-standard protein/DNA/RNA residues in this entry.

6.3 Carbohydrates [i](#)

There are no monosaccharides in this entry.

6.4 Ligands [i](#)

In the following table, the Atoms column lists the number of modelled atoms in the group and the number defined in the chemical component dictionary. The B-factors column lists the minimum, median, 95th percentile and maximum values of B factors of atoms in the group. The column labelled 'Q< 0.9' lists the number of atoms with occupancy less than 0.9.

Mol	Type	Chain	Res	Atoms	RSCC	RSR	B-factors(\AA^2)	Q<0.9
3	GOL	A	402	6/6	0.81	0.19	17,24,25,34	6
2	IPE	A	401	14/14	0.90	0.14	11,26,37,39	14
2	IPE	B	401	14/14	0.93	0.12	16,25,31,34	14
4	MG	B	405	1/1	0.94	0.28	43,43,43,43	1
4	MG	A	405	1/1	0.99	0.08	21,21,21,21	0
4	MG	B	403	1/1	0.99	0.08	18,18,18,18	1
4	MG	B	404	1/1	0.99	0.08	16,16,16,16	1
4	MG	A	404	1/1	0.99	0.11	30,30,30,30	0
4	MG	A	403	1/1	1.00	0.08	11,11,11,11	0
4	MG	A	406	1/1	1.00	0.15	20,20,20,20	1
4	MG	B	402	1/1	1.00	0.07	11,11,11,11	0

6.5 Other polymers [i](#)

There are no such residues in this entry.