



# Full wwPDB X-ray Structure Validation Report ⓘ

May 15, 2020 – 02:18 pm BST

PDB ID : 6N3G  
Title : Crystal structure of histone lysine methyltransferase SmyD2 in complex with polyethylene glycol  
Authors : Perry, E.; Spellmon, N.; Brunzelle, J.; Yang, Z.  
Deposited on : 2018-11-15  
Resolution : 2.43 Å(reported)

This is a Full wwPDB X-ray Structure Validation Report for a publicly released PDB entry.

We welcome your comments at [validation@mail.wwpdb.org](mailto:validation@mail.wwpdb.org)

A user guide is available at

<https://www.wwpdb.org/validation/2017/XrayValidationReportHelp>

with specific help available everywhere you see the ⓘ symbol.

---

The following versions of software and data (see [references ⓘ](#)) were used in the production of this report:

MolProbity : 4.02b-467  
Mogul : 1.8.5 (274361), CSD as541be (2020)  
Xtriage (Phenix) : 1.13  
EDS : 2.11  
buster-report : 1.1.7 (2018)  
Percentile statistics : 20191225.v01 (using entries in the PDB archive December 25th 2019)  
Refmac : 5.8.0158  
CCP4 : 7.0.044 (Gargrove)  
Ideal geometry (proteins) : Engh & Huber (2001)  
Ideal geometry (DNA, RNA) : Parkinson et al. (1996)  
Validation Pipeline (wwPDB-VP) : 2.11

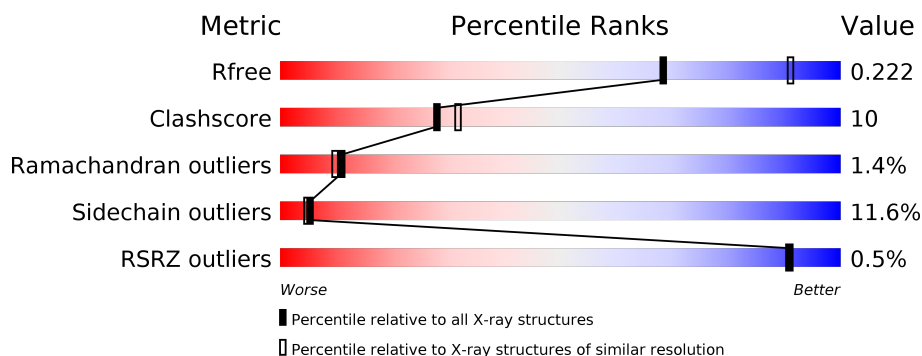
# 1 Overall quality at a glance

The following experimental techniques were used to determine the structure:

## *X-RAY DIFFRACTION*

The reported resolution of this entry is 2.43 Å.

Percentile scores (ranging between 0-100) for global validation metrics of the entry are shown in the following graphic. The table shows the number of entries on which the scores are based.



Metric	Whole archive (#Entries)	Similar resolution (#Entries, resolution range(Å))
$R_{free}$	130704	1564 (2.46-2.42)
Clashscore	141614	1631 (2.46-2.42)
Ramachandran outliers	138981	1617 (2.46-2.42)
Sidechain outliers	138945	1617 (2.46-2.42)
RSRZ outliers	127900	1547 (2.46-2.42)

The table below summarises the geometric issues observed across the polymeric chains and their fit to the electron density. The red, orange, yellow and green segments on the lower bar indicate the fraction of residues that contain outliers for  $\geq 3$ , 2, 1 and 0 types of geometric quality criteria respectively. A grey segment represents the fraction of residues that are not modelled. The numeric value for each fraction is indicated below the corresponding segment, with a dot representing fractions  $\leq 5\%$ . The upper red bar (where present) indicates the fraction of residues that have poor fit to the electron density. The numeric value is given above the bar.

Mol	Chain	Length	Quality of chain
1	A	433	<div> <div style="width: 69%; background-color: green;"></div> <div style="width: 27%; background-color: yellow;"></div> <div style="width: 4%; background-color: orange;"></div> <div style="width: 2%; background-color: red;"></div> <div style="width: 2%; background-color: grey;"></div> </div> <div>69% 27% ..</div>

The following table lists non-polymeric compounds, carbohydrate monomers and non-standard residues in protein, DNA, RNA chains that are outliers for geometric or electron-density-fit criteria:

Mol	Type	Chain	Res	Chirality	Geometry	Clashes	Electron density
5	EOH	A	505	-	-	X	-

## 2 Entry composition [i](#)

There are 7 unique types of molecules in this entry. The entry contains 3633 atoms, of which 0 are hydrogens and 0 are deuteriums.

In the tables below, the ZeroOcc column contains the number of atoms modelled with zero occupancy, the AltConf column contains the number of residues with at least one atom in alternate conformation and the Trace column contains the number of residues modelled with at most 2 atoms.

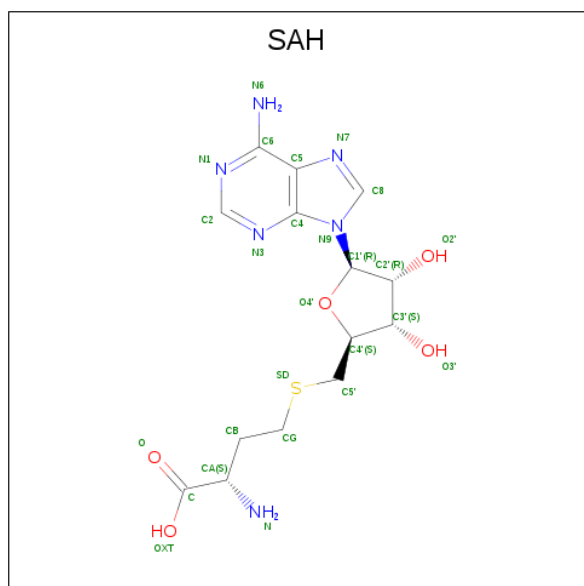
- Molecule 1 is a protein called N-lysine methyltransferase SMYD2.

Mol	Chain	Residues	Atoms					ZeroOcc	AltConf	Trace
1	A	430	Total	C	N	O	S	0	1	0
			3471	2201	593	647	30			

There is a discrepancy between the modelled and reference sequences:

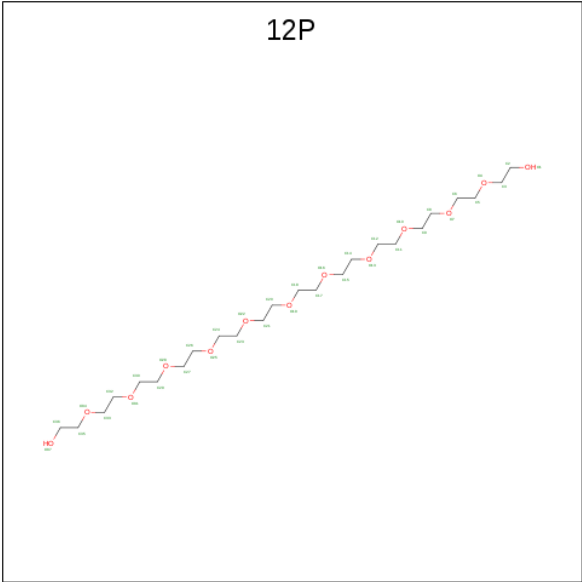
Chain	Residue	Modelled	Actual	Comment	Reference
A	165	GLU	GLY	conflict	UNP Q9NRG4

- Molecule 2 is S-ADENOSYL-L-HOMOCYSTEINE (three-letter code: SAH) (formula:  $C_{14}H_{20}N_6O_5S$ ).



Mol	Chain	Residues	Atoms					ZeroOcc	AltConf
2	A	1	Total	C	N	O	S	0	0
			26	14	6	5	1		

- Molecule 3 is DODECAETHYLENE GLYCOL (three-letter code: 12P) (formula:  $C_{24}H_{50}O_{13}$ ).

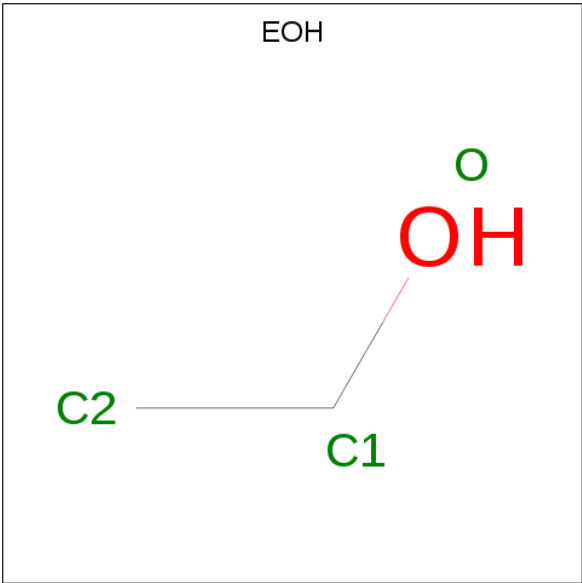


Mol	Chain	Residues	Atoms			ZeroOcc	AltConf
3	A	1	Total	C	O	0	0
			37	24	13		

- Molecule 4 is NICKEL (II) ION (three-letter code: NI) (formula: Ni).

Mol	Chain	Residues	Atoms		ZeroOcc	AltConf
4	A	2	Total	Ni	0	0
			2	2		

- Molecule 5 is ETHANOL (three-letter code: EOH) (formula: C<sub>2</sub>H<sub>6</sub>O).



Mol	Chain	Residues	Atoms	ZeroOcc	AltConf
5	A	1	Total C O 3 2 1	0	0
5	A	1	Total C O 3 2 1	0	0
5	A	1	Total C O 3 2 1	0	0
5	A	1	Total C O 3 2 1	0	0
5	A	1	Total C O 3 2 1	0	0

- Molecule 6 is ZINC ION (three-letter code: ZN) (formula: Zn).

Mol	Chain	Residues	Atoms	ZeroOcc	AltConf
6	A	3	Total Zn 3 3	0	0

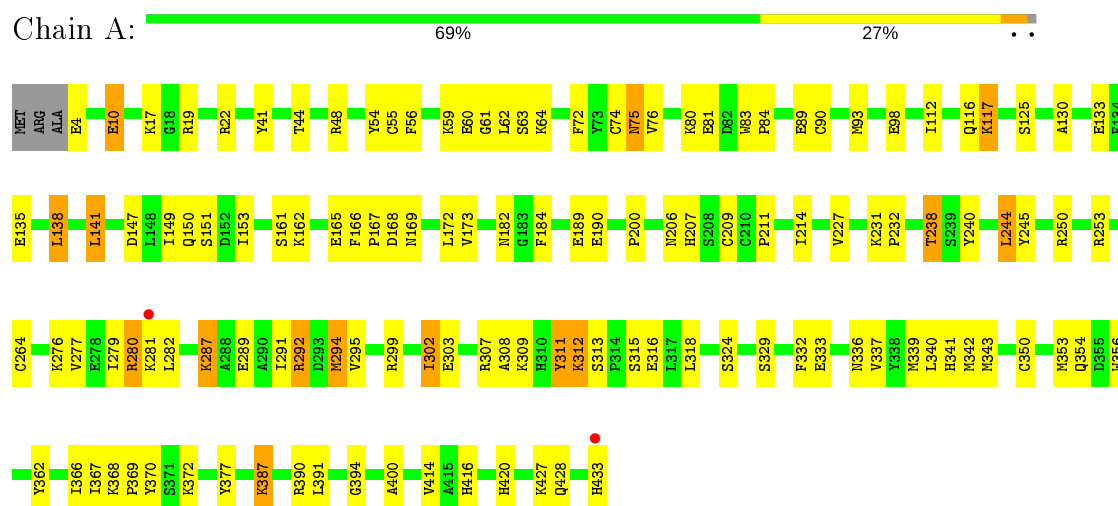
- Molecule 7 is water.

Mol	Chain	Residues	Atoms	ZeroOcc	AltConf
7	A	79	Total O 79 79	0	0

### 3 Residue-property plots [i](#)

These plots are drawn for all protein, RNA and DNA chains in the entry. The first graphic for a chain summarises the proportions of the various outlier classes displayed in the second graphic. The second graphic shows the sequence view annotated by issues in geometry and electron density. Residues are color-coded according to the number of geometric quality criteria for which they contain at least one outlier: green = 0, yellow = 1, orange = 2 and red = 3 or more. A red dot above a residue indicates a poor fit to the electron density ( $RSRZ > 2$ ). Stretches of 2 or more consecutive residues without any outlier are shown as a green connector. Residues present in the sample, but not in the model, are shown in grey.

- Molecule 1: N-lysine methyltransferase SMYD2



## 4 Data and refinement statistics

Property	Value	Source
Space group	I 4	Depositor
Cell constants a, b, c, $\alpha$ , $\beta$ , $\gamma$	151.84Å 151.84Å 53.74Å 90.00° 90.00° 90.00°	Depositor
Resolution (Å)	75.92 – 2.43 107.37 – 2.43	Depositor EDS
% Data completeness (in resolution range)	61.5 (75.92-2.43) 61.5 (107.37-2.43)	Depositor EDS
$R_{merge}$	(Not available)	Depositor
$R_{sym}$	(Not available)	Depositor
$\langle I/\sigma(I) \rangle$ <sup>1</sup>	1.78 (at 2.42Å)	Xtriage
Refinement program	PHENIX 1.11.1-2575	Depositor
R, $R_{free}$	0.175 , 0.222 0.174 , 0.222	Depositor DCC
$R_{free}$ test set	753 reflections (5.23%)	wwPDB-VP
Wilson B-factor (Å <sup>2</sup> )	38.2	Xtriage
Anisotropy	0.014	Xtriage
Bulk solvent $k_{sol}$ (e/Å <sup>3</sup> ), $B_{sol}$ (Å <sup>2</sup> )	0.34 , 43.3	EDS
L-test for twinning <sup>2</sup>	$\langle  L  \rangle = 0.50$ , $\langle L^2 \rangle = 0.33$	Xtriage
Estimated twinning fraction	0.019 for -k,-h,-l	Xtriage
$F_o, F_c$ correlation	0.93	EDS
Total number of atoms	3633	wwPDB-VP
Average B, all atoms (Å <sup>2</sup> )	37.0	wwPDB-VP

Xtriage's analysis on translational NCS is as follows: *The largest off-origin peak in the Patterson function is 4.72% of the height of the origin peak. No significant pseudotranslation is detected.*

<sup>1</sup>Intensities estimated from amplitudes.

<sup>2</sup>Theoretical values of  $\langle |L| \rangle$ ,  $\langle L^2 \rangle$  for acentric reflections are 0.5, 0.333 respectively for untwinned datasets, and 0.375, 0.2 for perfectly twinned datasets.

## 5 Model quality

### 5.1 Standard geometry

Bond lengths and bond angles in the following residue types are not validated in this section: EOH, NI, ZN, SAH, 12P

The Z score for a bond length (or angle) is the number of standard deviations the observed value is removed from the expected value. A bond length (or angle) with  $|Z| > 5$  is considered an outlier worth inspection. RMSZ is the root-mean-square of all Z scores of the bond lengths (or angles).

Mol	Chain	Bond lengths		Bond angles	
		RMSZ	$\# Z  > 5$	RMSZ	$\# Z  > 5$
1	A	0.55	0/3550	0.68	0/4785

There are no bond length outliers.

There are no bond angle outliers.

There are no chirality outliers.

There are no planarity outliers.

### 5.2 Too-close contacts

In the following table, the Non-H and H(model) columns list the number of non-hydrogen atoms and hydrogen atoms in the chain respectively. The H(added) column lists the number of hydrogen atoms added and optimized by MolProbity. The Clashes column lists the number of clashes within the asymmetric unit, whereas Symm-Clashes lists symmetry related clashes.

Mol	Chain	Non-H	H(model)	H(added)	Clashes	Symm-Clashes
1	A	3471	0	3410	68	0
2	A	26	0	19	2	0
3	A	37	0	50	3	0
4	A	2	0	0	0	0
5	A	15	0	30	4	0
6	A	3	0	0	0	0
7	A	79	0	0	4	0
All	All	3633	0	3509	70	0

The all-atom clashscore is defined as the number of clashes found per 1000 atoms (including hydrogen atoms). The all-atom clashscore for this structure is 10.

All (70) close contacts within the same asymmetric unit are listed below, sorted by their clash magnitude.

Atom-1	Atom-2	Interatomic distance (Å)	Clash overlap (Å)
1:A:238:THR:HG21	5:A:505:EOH:H21	1.69	0.72
1:A:138:LEU:HA	1:A:141:LEU:HD22	1.71	0.71
1:A:169:ASN:O	1:A:173:VAL:HG13	1.90	0.70
1:A:289:GLU:HA	1:A:292:ARG:HG3	1.75	0.67
1:A:362:TYR:O	1:A:366:ILE:HD12	1.98	0.63
1:A:189:GLU:HG3	1:A:390:ARG:HH22	1.66	0.61
1:A:295:VAL:O	1:A:299:ARG:HG3	2.02	0.59
1:A:190:GLU:OE2	1:A:390:ARG:NH1	2.36	0.58
1:A:10:GLU:OE1	1:A:22:ARG:HD2	2.03	0.58
1:A:64:LYS:HG3	1:A:72:PHE:CE1	2.40	0.57
1:A:394:GLY:HA3	3:A:502:12P:H352	1.87	0.57
1:A:276:LYS:HG2	1:A:337:VAL:HG11	1.87	0.56
1:A:19:ARG:HB2	2:A:501:SAH:OXT	2.06	0.56
1:A:214:ILE:HG13	1:A:227:VAL:HG11	1.89	0.55
1:A:117:LYS:HE2	1:A:165:GLU:OE2	2.07	0.54
1:A:182:ASN:ND2	7:A:602:HOH:O	2.31	0.54
1:A:377:TYR:CE1	1:A:414:VAL:HG21	2.43	0.54
1:A:207:HIS:HB2	1:A:240:TYR:CD1	2.43	0.54
1:A:184:PHE:CZ	5:A:505:EOH:H23	2.43	0.53
1:A:74:CYS:HB2	1:A:75:ASN:HD22	1.73	0.53
1:A:340:LEU:HD11	1:A:369:PRO:HB2	1.91	0.53
1:A:280:ARG:NH2	1:A:282:LEU:HD21	2.24	0.53
1:A:184:PHE:CE1	5:A:505:EOH:H23	2.45	0.52
1:A:17:LYS:HB3	1:A:206:ASN:ND2	2.25	0.52
1:A:130:ALA:HB3	1:A:133:GLU:HG2	1.91	0.52
1:A:168:ASP:N	1:A:168:ASP:OD2	2.38	0.52
1:A:149:ILE:O	1:A:153:ILE:HG13	2.09	0.52
1:A:280:ARG:HH21	1:A:282:LEU:HD21	1.75	0.51
1:A:209:CYS:HB2	1:A:264:CYS:SG	2.50	0.50
1:A:343:MET:HB3	1:A:366:ILE:HD11	1.94	0.50
1:A:125:SER:O	1:A:200:PRO:HB2	2.11	0.50
1:A:17:LYS:HG2	2:A:501:SAH:C6	2.42	0.50
1:A:311:TYR:HE1	1:A:312:LYS:HZ3	1.60	0.49
1:A:277:VAL:HA	1:A:336:ASN:ND2	2.27	0.49
1:A:354:GLN:NE2	7:A:603:HOH:O	2.33	0.49
1:A:302:ILE:HG23	1:A:341:HIS:NE2	2.26	0.49
1:A:279:ILE:HD12	1:A:291:ILE:HG12	1.95	0.49
1:A:244:LEU:HD23	1:A:245:TYR:CZ	2.48	0.48
1:A:153:ILE:HD13	1:A:172:LEU:HB3	1.95	0.48
1:A:350:CYS:HA	1:A:353:MET:HE2	1.96	0.48
1:A:112:ILE:O	1:A:116:GLN:HG3	2.15	0.47
1:A:313:SER:OG	1:A:316:GLU:HG3	2.15	0.47

Continued on next page...

*Continued from previous page...*

Atom-1	Atom-2	Interatomic distance (Å)	Clash overlap (Å)
1:A:214:ILE:HG13	1:A:227:VAL:CG1	2.44	0.47
1:A:416:HIS:HB3	1:A:420:HIS:CD2	2.50	0.47
3:A:502:12P:H82	3:A:502:12P:H52	1.62	0.46
5:A:507:EOH:H11	7:A:650:HOH:O	2.15	0.45
1:A:356:TRP:CH2	3:A:502:12P:H292	2.52	0.45
1:A:294:MET:HG3	1:A:332:PHE:CE2	2.52	0.45
1:A:153:ILE:HD13	1:A:172:LEU:CB	2.46	0.45
1:A:72:PHE:N	1:A:72:PHE:CD2	2.84	0.45
1:A:209:CYS:C	1:A:211:PRO:HD3	2.38	0.44
1:A:287:LYS:HG2	1:A:287:LYS:H	1.59	0.44
1:A:54:TYR:CZ	1:A:81:GLU:HB3	2.52	0.44
1:A:89:GLU:O	1:A:93:MET:HB2	2.18	0.44
1:A:245:TYR:O	1:A:250:ARG:NH1	2.52	0.43
1:A:324:SER:OG	1:A:342:MET:HG3	2.19	0.43
1:A:391:LEU:HD23	1:A:391:LEU:HA	1.90	0.42
1:A:400:ALA:O	7:A:601:HOH:O	2.22	0.42
1:A:276:LYS:HG2	1:A:337:VAL:CG1	2.50	0.42
1:A:63:SER:O	1:A:72:PHE:HA	2.20	0.42
1:A:387:LYS:HA	1:A:387:LYS:HD2	1.89	0.42
1:A:308:ALA:HB1	1:A:312:LYS:HG3	2.02	0.41
1:A:214:ILE:HD11	1:A:377:TYR:O	2.21	0.41
1:A:55:CYS:O	1:A:56:PHE:HB2	2.20	0.41
1:A:416:HIS:HB3	1:A:420:HIS:CG	2.56	0.41
1:A:59:LYS:O	1:A:62:LEU:HD11	2.21	0.41
1:A:41:TYR:CD2	1:A:41:TYR:N	2.89	0.40
1:A:339:MET:O	1:A:343:MET:HG3	2.21	0.40
1:A:302:ILE:HD13	1:A:341:HIS:CD2	2.57	0.40
1:A:83:TRP:N	1:A:84:PRO:HD2	2.37	0.40

There are no symmetry-related clashes.

## 5.3 Torsion angles [i](#)

### 5.3.1 Protein backbone [i](#)

In the following table, the Percentiles column shows the percent Ramachandran outliers of the chain as a percentile score with respect to all X-ray entries followed by that with respect to entries of similar resolution.

The Analysed column shows the number of residues for which the backbone conformation was analysed, and the total number of residues.

Mol	Chain	Analysed	Favoured	Allowed	Outliers	Percentiles
1	A	429/433 (99%)	396 (92%)	27 (6%)	6 (1%)	11 10

All (6) Ramachandran outliers are listed below:

Mol	Chain	Res	Type
1	A	90	CYS
1	A	167	PRO
1	A	281	LYS
1	A	311	TYR
1	A	329	SER
1	A	61	GLY

### 5.3.2 Protein sidechains ⓘ

In the following table, the Percentiles column shows the percent sidechain outliers of the chain as a percentile score with respect to all X-ray entries followed by that with respect to entries of similar resolution.

The Analysed column shows the number of residues for which the sidechain conformation was analysed, and the total number of residues.

Mol	Chain	Analysed	Rotameric	Outliers	Percentiles
1	A	381/382 (100%)	336 (88%)	45 (12%)	5 4

All (45) residues with a non-rotameric sidechain are listed below:

Mol	Chain	Res	Type
1	A	4	GLU
1	A	10	GLU
1	A	44	THR
1	A	48	ARG
1	A	60	GLU
1	A	75	ASN
1	A	76	VAL
1	A	80	LYS
1	A	98	GLU
1	A	117	LYS
1	A	135	GLU
1	A	138	LEU
1	A	141	LEU
1	A	147	ASP
1	A	150	GLN

*Continued on next page...*

*Continued from previous page...*

Mol	Chain	Res	Type
1	A	151	SER
1	A	161	SER
1	A	162	LYS
1	A	166	PHE
1	A	231[A]	LYS
1	A	231[B]	LYS
1	A	232	PRO
1	A	238	THR
1	A	244	LEU
1	A	253	ARG
1	A	280	ARG
1	A	287	LYS
1	A	292	ARG
1	A	294	MET
1	A	302	ILE
1	A	303	GLU
1	A	307	ARG
1	A	309	LYS
1	A	312	LYS
1	A	315	SER
1	A	318	LEU
1	A	333	GLU
1	A	367	ILE
1	A	368	LYS
1	A	370	TYR
1	A	372	LYS
1	A	387	LYS
1	A	427	LYS
1	A	428	GLN
1	A	433	HIS

Some sidechains can be flipped to improve hydrogen bonding and reduce clashes. There are no such sidechains identified.

### 5.3.3 RNA ⓘ

There are no RNA molecules in this entry.

## 5.4 Non-standard residues in protein, DNA, RNA chains ⓘ

There are no non-standard protein/DNA/RNA residues in this entry.

## 5.5 Carbohydrates [i](#)

There are no carbohydrates in this entry.

## 5.6 Ligand geometry [i](#)

Of 12 ligands modelled in this entry, 5 are monoatomic - leaving 7 for Mogul analysis.

In the following table, the Counts columns list the number of bonds (or angles) for which Mogul statistics could be retrieved, the number of bonds (or angles) that are observed in the model and the number of bonds (or angles) that are defined in the Chemical Component Dictionary. The Link column lists molecule types, if any, to which the group is linked. The Z score for a bond length (or angle) is the number of standard deviations the observed value is removed from the expected value. A bond length (or angle) with  $|Z| > 2$  is considered an outlier worth inspection. RMSZ is the root-mean-square of all Z scores of the bond lengths (or angles).

Mol	Type	Chain	Res	Link	Bond lengths			Bond angles		
					Counts	RMSZ	$\# Z  > 2$	Counts	RMSZ	$\# Z  > 2$
5	EOH	A	505	-	2,2,2	0.49	0	1,1,1	0.00	0
5	EOH	A	506	-	2,2,2	0.51	0	1,1,1	0.24	0
2	SAH	A	501	-	21,28,28	1.35	3 (14%)	20,40,40	1.93	4 (20%)
5	EOH	A	508	-	2,2,2	0.55	0	1,1,1	0.02	0
5	EOH	A	509	-	2,2,2	0.59	0	1,1,1	0.15	0
5	EOH	A	507	-	2,2,2	0.54	0	1,1,1	0.19	0
3	12P	A	502	-	36,36,36	0.60	0	35,35,35	0.49	0

In the following table, the Chirals column lists the number of chiral outliers, the number of chiral centers analysed, the number of these observed in the model and the number defined in the Chemical Component Dictionary. Similar counts are reported in the Torsion and Rings columns. '-' means no outliers of that kind were identified.

Mol	Type	Chain	Res	Link	Chirals	Torsions	Rings
2	SAH	A	501	-	-	5/7/31/31	0/3/3/3
3	12P	A	502	-	-	19/34/34/34	-

All (3) bond length outliers are listed below:

Mol	Chain	Res	Type	Atoms	Z	Observed(Å)	Ideal(Å)
2	A	501	SAH	C2-N3	3.75	1.38	1.32
2	A	501	SAH	C2-N1	2.56	1.38	1.33
2	A	501	SAH	C2'-C1'	-2.53	1.49	1.53

All (4) bond angle outliers are listed below:

Mol	Chain	Res	Type	Atoms	Z	Observed(°)	Ideal(°)
2	A	501	SAH	N3-C2-N1	-5.57	119.97	128.68
2	A	501	SAH	CB-CG-SD	3.96	122.19	113.31
2	A	501	SAH	C5'-SD-CG	-2.62	94.40	102.27
2	A	501	SAH	O4'-C4'-C3'	-2.39	100.38	105.11

There are no chirality outliers.

All (24) torsion outliers are listed below:

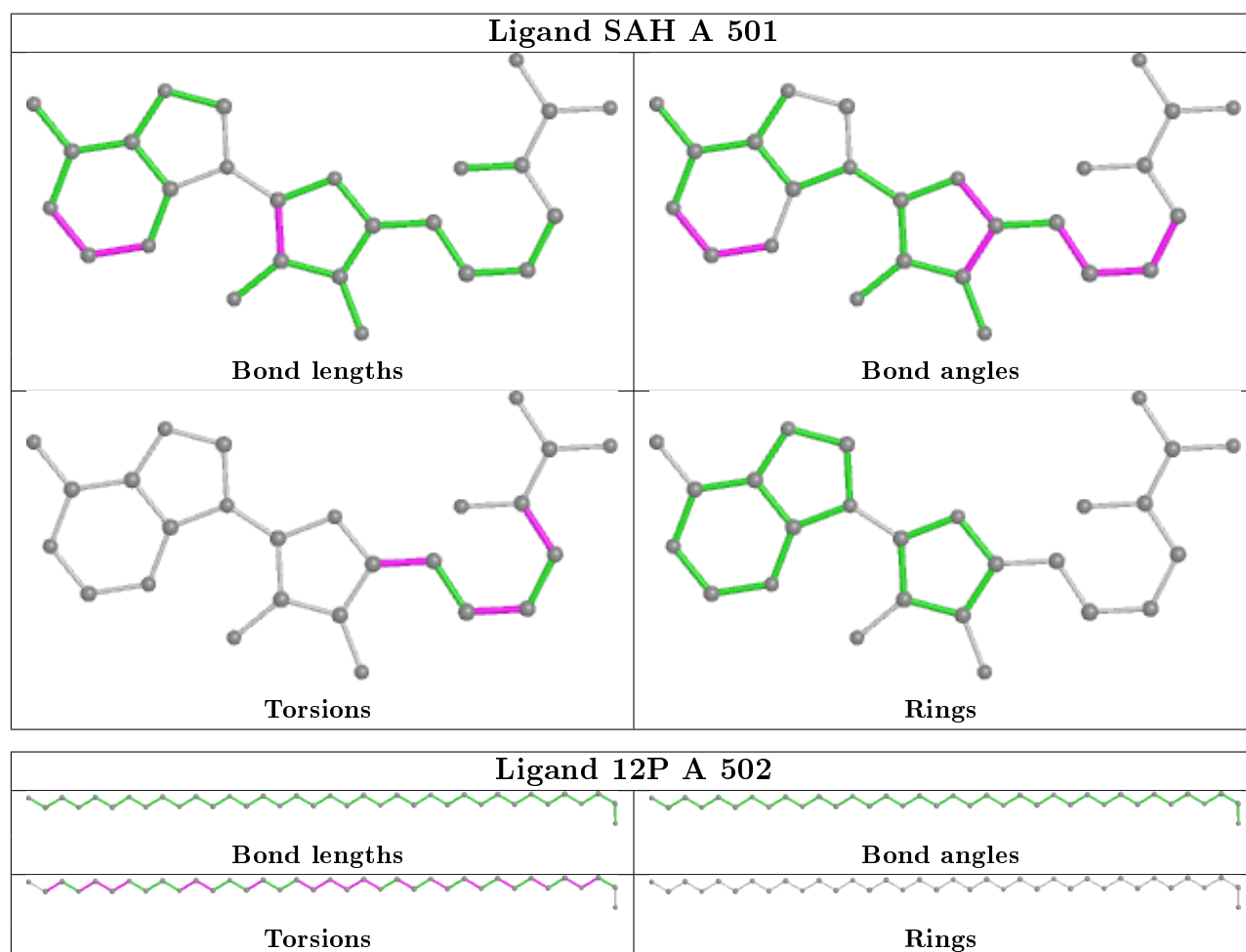
Mol	Chain	Res	Type	Atoms
2	A	501	SAH	C-CA-CB-CG
3	A	502	12P	O28-C29-C30-O31
3	A	502	12P	O10-C11-C12-O13
3	A	502	12P	O22-C23-C24-O25
3	A	502	12P	O13-C14-C15-O16
3	A	502	12P	C5-C6-O7-C8
3	A	502	12P	O4-C5-C6-O7
3	A	502	12P	O1-C2-C3-O4
3	A	502	12P	O19-C20-C21-O22
3	A	502	12P	C33-C32-O31-C30
3	A	502	12P	C12-C11-O10-C9
3	A	502	12P	C6-C5-O4-C3
2	A	501	SAH	N-CA-CB-CG
2	A	501	SAH	C3'-C4'-C5'-SD
3	A	502	12P	C27-C26-O25-C24
3	A	502	12P	O16-C17-C18-O19
3	A	502	12P	C26-C27-O28-C29
2	A	501	SAH	O4'-C4'-C5'-SD
3	A	502	12P	C20-C21-O22-C23
3	A	502	12P	C17-C18-O19-C20
3	A	502	12P	C32-C33-O34-C35
2	A	501	SAH	CB-CG-SD-C5'
3	A	502	12P	C21-C20-O19-C18
3	A	502	12P	C36-C35-O34-C33

There are no ring outliers.

4 monomers are involved in 9 short contacts:

Mol	Chain	Res	Type	Clashes	Symm-Clashes
5	A	505	EOH	3	0
2	A	501	SAH	2	0
5	A	507	EOH	1	0
3	A	502	12P	3	0

The following is a two-dimensional graphical depiction of Mogul quality analysis of bond lengths, bond angles, torsion angles, and ring geometry for all instances of the Ligand of Interest. In addition, ligands with molecular weight > 250 and outliers as shown on the validation Tables will also be included. For torsion angles, if less than 5% of the Mogul distribution of torsion angles is within 10 degrees of the torsion angle in question, then that torsion angle is considered an outlier. Any bond that is central to one or more torsion angles identified as an outlier by Mogul will be highlighted in the graph. For rings, the root-mean-square deviation (RMSD) between the ring in question and similar rings identified by Mogul is calculated over all ring torsion angles. If the average RMSD is greater than 60 degrees and the minimal RMSD between the ring in question and any Mogul-identified rings is also greater than 60 degrees, then that ring is considered an outlier. The outliers are highlighted in purple. The color gray indicates Mogul did not find sufficient equivalents in the CSD to analyse the geometry.



## 5.7 Other polymers [i](#)

There are no such residues in this entry.

## 5.8 Polymer linkage issues

There are no chain breaks in this entry.

## 6 Fit of model and data [i](#)

### 6.1 Protein, DNA and RNA chains [i](#)

In the following table, the column labelled ‘#RSRZ> 2’ contains the number (and percentage) of RSRZ outliers, followed by percent RSRZ outliers for the chain as percentile scores relative to all X-ray entries and entries of similar resolution. The OWAB column contains the minimum, median, 95<sup>th</sup> percentile and maximum values of the occupancy-weighted average B-factor per residue. The column labelled ‘Q< 0.9’ lists the number of (and percentage) of residues with an average occupancy less than 0.9.

Mol	Chain	Analysed	<RSRZ>	#RSRZ>2	OWAB(Å <sup>2</sup> )	Q<0.9
1	A	430/433 (99%)	-0.15	2 (0%) 91 91	14, 34, 69, 116	0

All (2) RSRZ outliers are listed below:

Mol	Chain	Res	Type	RSRZ
1	A	433	HIS	4.5
1	A	281	LYS	2.1

### 6.2 Non-standard residues in protein, DNA, RNA chains [i](#)

There are no non-standard protein/DNA/RNA residues in this entry.

### 6.3 Carbohydrates [i](#)

There are no carbohydrates in this entry.

### 6.4 Ligands [i](#)

In the following table, the Atoms column lists the number of modelled atoms in the group and the number defined in the chemical component dictionary. The B-factors column lists the minimum, median, 95<sup>th</sup> percentile and maximum values of B factors of atoms in the group. The column labelled ‘Q< 0.9’ lists the number of atoms with occupancy less than 0.9.

Mol	Type	Chain	Res	Atoms	RSCC	RSR	B-factors(Å <sup>2</sup> )	Q<0.9
4	NI	A	504	1/1	0.88	0.09	91,91,91,91	0
5	EOH	A	509	3/3	0.91	0.14	20,20,20,20	0
5	EOH	A	507	3/3	0.91	0.25	31,31,44,46	0
5	EOH	A	506	3/3	0.93	0.34	51,51,57,59	0
3	12P	A	502	37/37	0.93	0.14	28,46,71,74	0

*Continued on next page...*

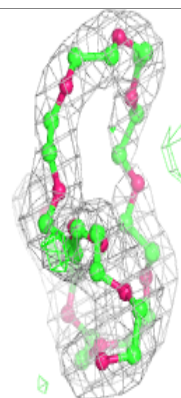
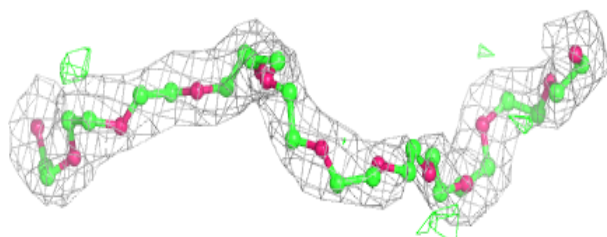
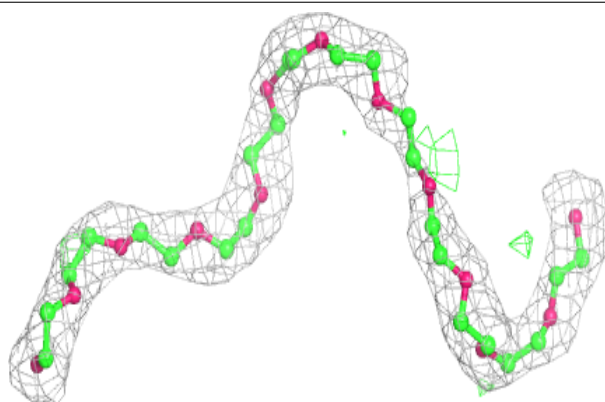
*Continued from previous page...*

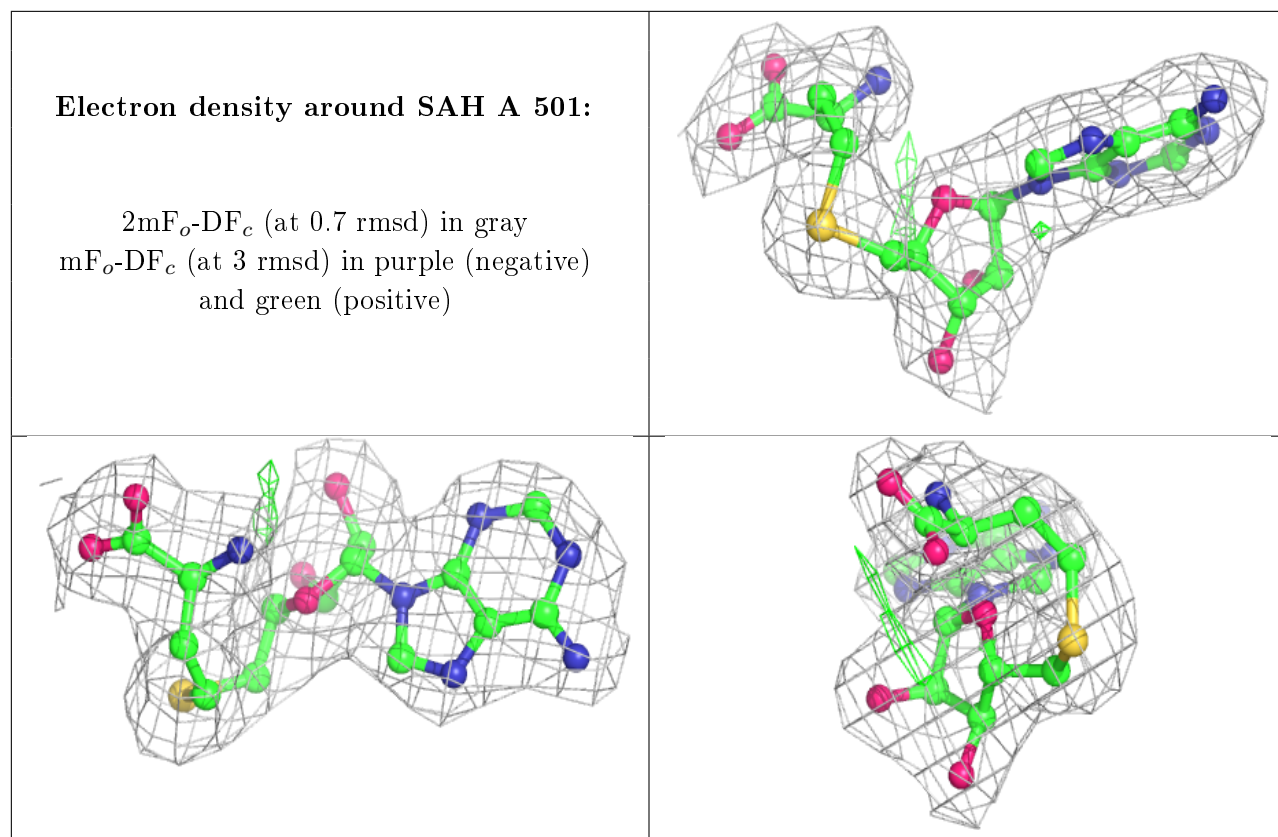
Mol	Type	Chain	Res	Atoms	RSCC	RSR	B-factors( $\text{\AA}^2$ )	Q<0.9
5	EOH	A	505	3/3	0.94	0.31	34,34,44,44	0
5	EOH	A	508	3/3	0.94	0.19	20,20,20,20	0
2	SAH	A	501	26/26	0.97	0.14	20,25,28,30	0
6	ZN	A	510	1/1	0.99	0.15	52,52,52,52	0
4	NI	A	503	1/1	0.99	0.13	76,76,76,76	0
6	ZN	A	512	1/1	1.00	0.14	35,35,35,35	0
6	ZN	A	511	1/1	1.00	0.15	36,36,36,36	0

The following is a graphical depiction of the model fit to experimental electron density of all instances of the Ligand of Interest. In addition, ligands with molecular weight > 250 and outliers as shown on the geometry validation Tables will also be included. Each fit is shown from different orientation to approximate a three-dimensional view.

**Electron density around 12P A 502:**

2mF<sub>o</sub>-DF<sub>c</sub> (at 0.7 rmsd) in gray  
mF<sub>o</sub>-DF<sub>c</sub> (at 3 rmsd) in purple (negative)  
and green (positive)





## 6.5 Other polymers [i](#)

There are no such residues in this entry.