



Full wwPDB X-ray Structure Validation Report ⓘ

Aug 22, 2020 – 07:19 AM BST

PDB ID : 4N4W
Title : Structure of the human smoothened receptor in complex with SANT-1.
Authors : Wang, C.; Wu, H.; Han, G.W.; Cherezov, V.; Stevens, R.C.; GPCR Network (GPCR)
Deposited on : 2013-10-08
Resolution : 2.80 Å(reported)

This is a Full wwPDB X-ray Structure Validation Report for a publicly released PDB entry.

We welcome your comments at validation@mail.wwpdb.org

A user guide is available at

<https://www.wwpdb.org/validation/2017/XrayValidationReportHelp>

with specific help available everywhere you see the ⓘ symbol.

The following versions of software and data (see [references ⓘ](#)) were used in the production of this report:

MolProbity	:	4.02b-467
Mogul	:	1.8.5 (274361), CSD as541be (2020)
Xtriage (Phenix)	:	1.13
EDS	:	2.13.1
buster-report	:	1.1.7 (2018)
Percentile statistics	:	20191225.v01 (using entries in the PDB archive December 25th 2019)
Refmac	:	5.8.0158
CCP4	:	7.0.044 (Gargrove)
Ideal geometry (proteins)	:	Engh & Huber (2001)
Ideal geometry (DNA, RNA)	:	Parkinson et al. (1996)
Validation Pipeline (wwPDB-VP)	:	2.13.1

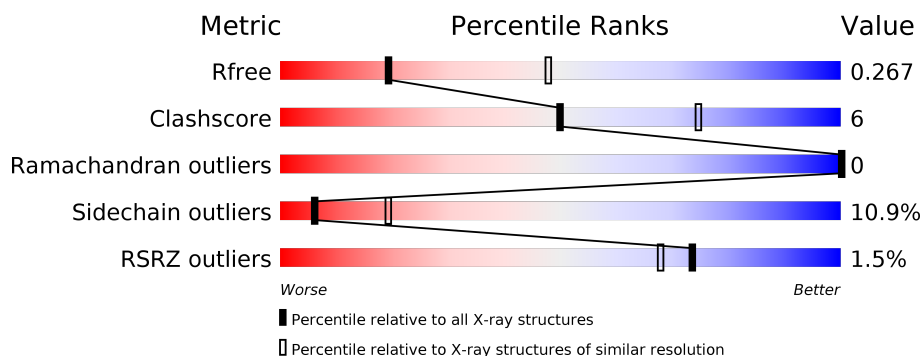
1 Overall quality at a glance

The following experimental techniques were used to determine the structure:

X-RAY DIFFRACTION

The reported resolution of this entry is 2.80 Å.

Percentile scores (ranging between 0-100) for global validation metrics of the entry are shown in the following graphic. The table shows the number of entries on which the scores are based.



Metric	Whole archive (#Entries)	Similar resolution (#Entries, resolution range(Å))
R_{free}	130704	3140 (2.80-2.80)
Clashscore	141614	3569 (2.80-2.80)
Ramachandran outliers	138981	3498 (2.80-2.80)
Sidechain outliers	138945	3500 (2.80-2.80)
RSRZ outliers	127900	3078 (2.80-2.80)

The table below summarises the geometric issues observed across the polymeric chains and their fit to the electron density. The red, orange, yellow and green segments on the lower bar indicate the fraction of residues that contain outliers for ≥ 3 , 2, 1 and 0 types of geometric quality criteria respectively. A grey segment represents the fraction of residues that are not modelled. The numeric value for each fraction is indicated below the corresponding segment, with a dot representing fractions $\leq 5\%$. The upper red bar (where present) indicates the fraction of residues that have poor fit to the electron density. The numeric value is given above the bar.

Mol	Chain	Length	Quality of chain
1	A	475	<div> <div></div> <div>77%</div> <div>17%</div> <div>• •</div> </div>
2	B	4	<div> <div>25%</div> <div>50%</div> <div>25%</div> </div>

2 Entry composition [i](#)

There are 8 unique types of molecules in this entry. The entry contains 3707 atoms, of which 0 are hydrogens and 0 are deuteriums.

In the tables below, the ZeroOcc column contains the number of atoms modelled with zero occupancy, the AltConf column contains the number of residues with at least one atom in alternate conformation and the Trace column contains the number of residues modelled with at most 2 atoms.

- Molecule 1 is a protein called Cytochrome b(562),Smoothened homolog.

Mol	Chain	Residues	Atoms					ZeroOcc	AltConf	Trace
1	A	457	Total	C	N	O	S	0	2	0
			3570	2319	583	647	21			

There are 6 discrepancies between the modelled and reference sequences:

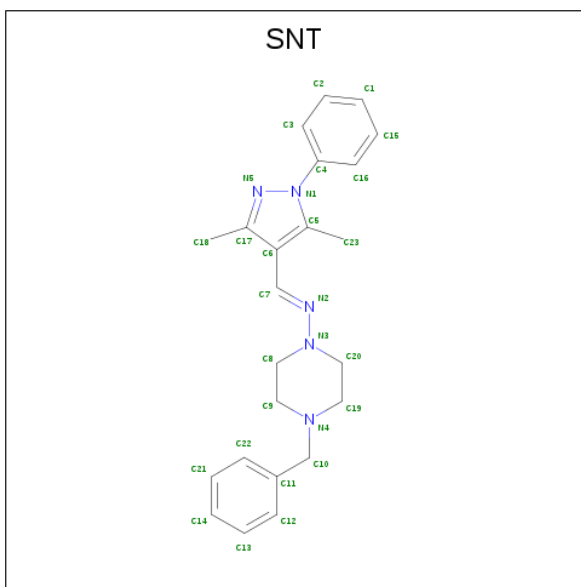
Chain	Residue	Modelled	Actual	Comment	Reference
A	-2	GLY	-	expression tag	UNP Q0SXH8
A	-1	GLY	-	expression tag	UNP Q0SXH8
A	0	THR	-	expression tag	UNP Q0SXH8
A	7	TRP	MET	engineered mutation	UNP Q0SXH8
A	102	ILE	HIS	engineered mutation	UNP Q0SXH8
A	106	LEU	ARG	engineered mutation	UNP Q0SXH8

- Molecule 2 is an oligosaccharide called alpha-D-mannopyranose-(1-3)-beta-D-mannopyranose-(1-4)-2-acetamido-2-deoxy-beta-D-glucopyranose-(1-4)-2-acetamido-2-deoxy-beta-D-glucopyranose.



Mol	Chain	Residues	Atoms				ZeroOcc	AltConf	Trace
2	B	4	Total	C	N	O	0	0	0
			50	28	2	20			

- Molecule 3 is (E)-N-(4-benzylpiperazin-1-yl)-1-(3,5-dimethyl-1-phenyl-1H-pyrazol-4-yl)methanimine (three-letter code: SNT) (formula: C₂₃H₂₇N₅).

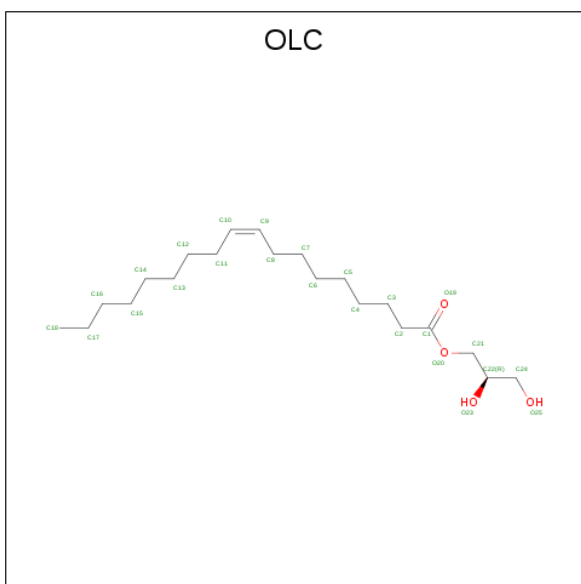


Mol	Chain	Residues	Atoms		ZeroOcc	AltConf
3	A	1	Total	C N	0	0
			28	23 5		

- Molecule 4 is ZINC ION (three-letter code: ZN) (formula: Zn).

Mol	Chain	Residues	Atoms		ZeroOcc	AltConf
4	A	2	Total	Zn	0	0
			2	2		

- Molecule 5 is (2R)-2,3-dihydroxypropyl (9Z)-octadec-9-enoate (three-letter code: OLC) (formula: C₂₁H₄₀O₄).



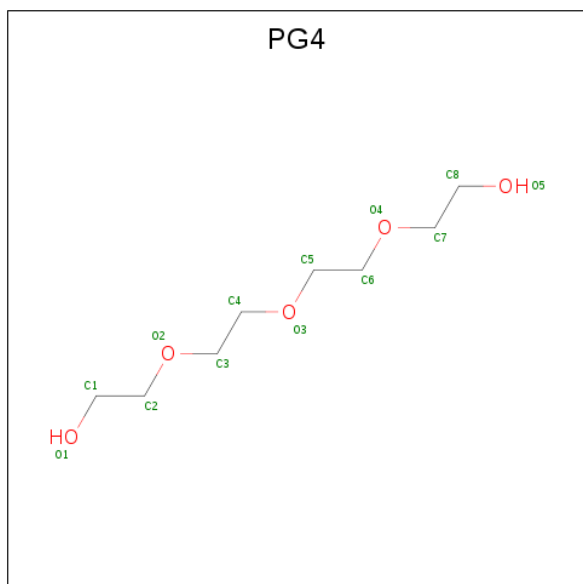
Mol	Chain	Residues	Atoms			ZeroOcc	AltConf
5	A	1	Total	C	O	0	0
			15	11	4		
5	A	1	Total	C	O	0	0
			14	10	4		

- Molecule 6 is DI(HYDROXYETHYL)ETHER (three-letter code: PEG) (formula: $C_4H_{10}O_3$).



Mol	Chain	Residues	Atoms			ZeroOcc	AltConf
6	A	1	Total	C	O	0	0
			7	4	3		

- Molecule 7 is TETRAETHYLENE GLYCOL (three-letter code: PG4) (formula: $C_8H_{18}O_5$).



Mol	Chain	Residues	Atoms			ZeroOcc	AltConf
7	A	1	Total	C	O	0	0
			13	8	5		

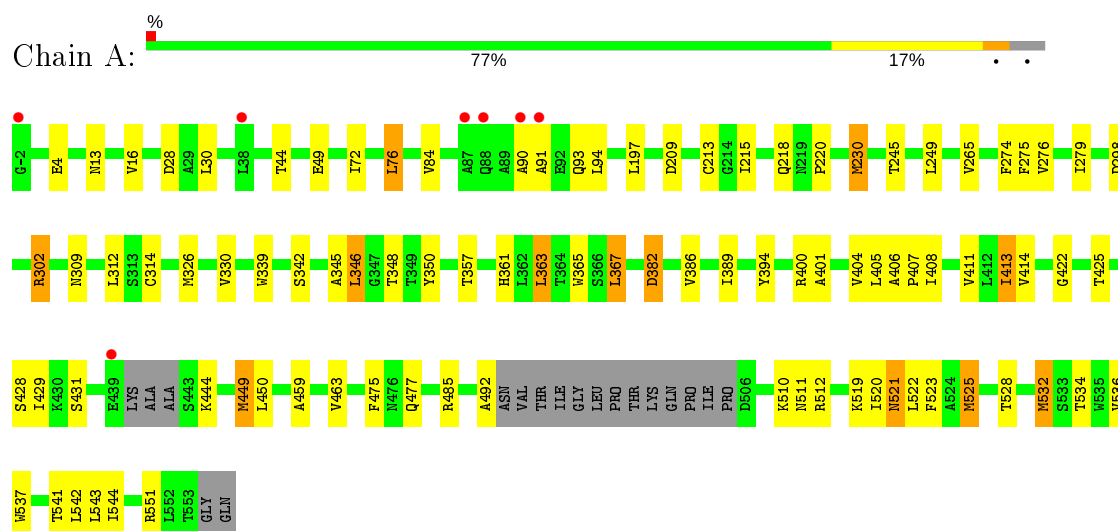
- Molecule 8 is water.

Mol	Chain	Residues	Atoms		ZeroOcc	AltConf
8	A	8	Total	O	0	0
			8	8		

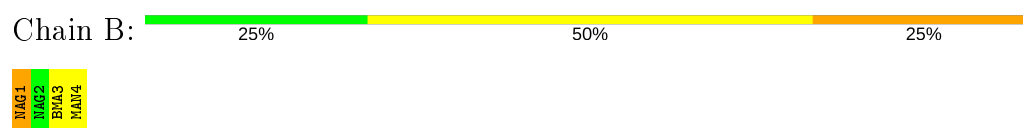
3 Residue-property plots [i](#)

These plots are drawn for all protein, RNA, DNA and oligosaccharide chains in the entry. The first graphic for a chain summarises the proportions of the various outlier classes displayed in the second graphic. The second graphic shows the sequence view annotated by issues in geometry and electron density. Residues are color-coded according to the number of geometric quality criteria for which they contain at least one outlier: green = 0, yellow = 1, orange = 2 and red = 3 or more. A red dot above a residue indicates a poor fit to the electron density ($RSRZ > 2$). Stretches of 2 or more consecutive residues without any outlier are shown as a green connector. Residues present in the sample, but not in the model, are shown in grey.

- Molecule 1: Cytochrome b(562),Smoothened homolog



- Molecule 2: alpha-D-mannopyranose-(1-3)-beta-D-mannopyranose-(1-4)-2-acetamido-2-deoxy-beta-D-glucopyranose-(1-4)-2-acetamido-2-deoxy-beta-D-glucopyranose



4 Data and refinement statistics

Property	Value	Source
Space group	C 2 2 21	Depositor
Cell constants a, b, c, α , β , γ	84.64Å 110.88Å 145.21Å 90.00° 90.00° 90.00°	Depositor
Resolution (Å)	49.35 – 2.80 49.35 – 2.80	Depositor EDS
% Data completeness (in resolution range)	93.0 (49.35-2.80) 93.3 (49.35-2.80)	Depositor EDS
R_{merge}	0.12	Depositor
R_{sym}	(Not available)	Depositor
$\langle I/\sigma(I) \rangle$ ¹	2.08 (at 2.81Å)	Xtriage
Refinement program	BUSTER 2.10.0	Depositor
R, R_{free}	0.204 , 0.253 0.217 , 0.267	Depositor DCC
R_{free} test set	776 reflections (4.85%)	wwPDB-VP
Wilson B-factor (Å ²)	68.6	Xtriage
Anisotropy	0.522	Xtriage
Bulk solvent k_{sol} (e/Å ³), B_{sol} (Å ²)	0.31 , 64.0	EDS
L-test for twinning ²	$\langle L \rangle = 0.49$, $\langle L^2 \rangle = 0.32$	Xtriage
Estimated twinning fraction	No twinning to report.	Xtriage
F_o, F_c correlation	0.94	EDS
Total number of atoms	3707	wwPDB-VP
Average B, all atoms (Å ²)	81.0	wwPDB-VP

Xtriage's analysis on translational NCS is as follows: *The largest off-origin peak in the Patterson function is 6.30% of the height of the origin peak. No significant pseudotranslation is detected.*

¹Intensities estimated from amplitudes.

²Theoretical values of $\langle |L| \rangle$, $\langle L^2 \rangle$ for acentric reflections are 0.5, 0.333 respectively for untwinned datasets, and 0.375, 0.2 for perfectly twinned datasets.

5 Model quality [i](#)

5.1 Standard geometry [i](#)

Bond lengths and bond angles in the following residue types are not validated in this section: ZN, OLC, NAG, PG4, SNT, BMA, PEG, MAN

The Z score for a bond length (or angle) is the number of standard deviations the observed value is removed from the expected value. A bond length (or angle) with $|Z| > 5$ is considered an outlier worth inspection. RMSZ is the root-mean-square of all Z scores of the bond lengths (or angles).

Mol	Chain	Bond lengths		Bond angles	
		RMSZ	$\# Z > 5$	RMSZ	$\# Z > 5$
1	A	0.51	0/3659	0.65	0/4979

There are no bond length outliers.

There are no bond angle outliers.

There are no chirality outliers.

There are no planarity outliers.

5.2 Too-close contacts [i](#)

In the following table, the Non-H and H(model) columns list the number of non-hydrogen atoms and hydrogen atoms in the chain respectively. The H(added) column lists the number of hydrogen atoms added and optimized by MolProbity. The Clashes column lists the number of clashes within the asymmetric unit, whereas Symm-Clashes lists symmetry related clashes.

Mol	Chain	Non-H	H(model)	H(added)	Clashes	Symm-Clashes
1	A	3570	0	3467	40	0
2	B	50	0	43	1	0
3	A	28	0	27	4	0
4	A	2	0	0	0	0
5	A	29	0	36	2	0
6	A	7	0	10	0	0
7	A	13	0	18	1	0
8	A	8	0	0	0	0
All	All	3707	0	3601	42	0

The all-atom clashscore is defined as the number of clashes found per 1000 atoms (including hydrogen atoms). The all-atom clashscore for this structure is 6.

All (42) close contacts within the same asymmetric unit are listed below, sorted by their clash

magnitude.

Atom-1	Atom-2	Interatomic distance (Å)	Clash overlap (Å)
1:A:492:ALA:HB1	2:B:1:NAG:H81	1.63	0.81
1:A:521:ASN:HD21	3:A:605:SNT:H6	1.65	0.61
1:A:275:PHE:CE2	1:A:279:ILE:HD11	2.37	0.60
1:A:382:ASP:HB2	1:A:394:TYR:HB2	1.84	0.59
1:A:345:ALA:O	1:A:348:THR:HB	2.04	0.57
1:A:91:ALA:HA	1:A:94:LEU:HD12	1.88	0.56
1:A:30:LEU:HB3	1:A:76:LEU:HD12	1.89	0.55
1:A:342:SER:HB2	1:A:449:MET:CE	2.38	0.54
3:A:605:SNT:N2	3:A:605:SNT:H17	2.23	0.53
1:A:407:PRO:O	1:A:411:VAL:HG13	2.09	0.53
1:A:522:LEU:HD23	1:A:525:MET:HE1	1.91	0.52
1:A:276:VAL:HA	1:A:279:ILE:HD12	1.93	0.51
1:A:425:THR:O	1:A:429:ILE:HG12	2.11	0.51
1:A:401:ALA:HA	1:A:405:LEU:HB2	1.93	0.51
1:A:389:ILE:HD11	3:A:605:SNT:H18	1.93	0.49
1:A:245:THR:O	1:A:249:LEU:HG	2.12	0.49
1:A:215:ILE:HD11	1:A:220:PRO:HG3	1.96	0.48
1:A:342:SER:HB2	1:A:449:MET:HE3	1.95	0.48
1:A:361:HIS:O	1:A:365:TRP:CD1	2.67	0.47
1:A:519:LYS:HD2	5:A:608:OLC:H21A	1.96	0.47
1:A:520:ILE:HG12	5:A:608:OLC:H5	1.96	0.47
1:A:339:TRP:CZ3	1:A:422:GLY:HA3	2.50	0.46
1:A:459:ALA:O	1:A:463:VAL:HG23	2.14	0.46
1:A:346:LEU:C	1:A:348:THR:H	2.19	0.46
1:A:274:PHE:CE2	3:A:605:SNT:H13	2.50	0.46
1:A:197:LEU:HB3	1:A:213:CYS:HB3	1.98	0.45
1:A:413:ILE:HG13	1:A:414:VAL:N	2.32	0.45
1:A:404:VAL:HG12	1:A:408:ILE:HD12	1.99	0.44
7:A:611:PG4:H41	7:A:611:PG4:H61	1.70	0.44
1:A:528:THR:O	1:A:532:MET:HB2	2.18	0.43
1:A:13:ASN:HA	1:A:16:VAL:HG22	2.01	0.43
1:A:302:ARG:HG2	1:A:314:CYS:SG	2.59	0.42
1:A:342:SER:HB2	1:A:449:MET:HE1	2.01	0.42
1:A:326:MET:O	1:A:330:VAL:HG23	2.19	0.42
1:A:72:ILE:HG13	1:A:94:LEU:HD21	2.02	0.41
1:A:90:ALA:O	1:A:93:GLN:HB2	2.20	0.41
1:A:541:THR:HA	1:A:544:ILE:HD12	2.02	0.41
1:A:406:ALA:HB3	1:A:407:PRO:HD3	2.02	0.41
1:A:363:LEU:O	1:A:367:LEU:HB2	2.21	0.40
1:A:230:MET:HG3	1:A:386:VAL:HG22	2.03	0.40
1:A:348:THR:HG22	1:A:350:TYR:H	1.86	0.40

Continued on next page...

Continued from previous page...

Atom-1	Atom-2	Interatomic distance (Å)	Clash overlap (Å)
1:A:534:THR:HA	1:A:537:TRP:CD1	2.56	0.40

There are no symmetry-related clashes.

5.3 Torsion angles [i](#)

5.3.1 Protein backbone [i](#)

In the following table, the Percentiles column shows the percent Ramachandran outliers of the chain as a percentile score with respect to all X-ray entries followed by that with respect to entries of similar resolution.

The Analysed column shows the number of residues for which the backbone conformation was analysed, and the total number of residues.

Mol	Chain	Analysed	Favoured	Allowed	Outliers	Percentiles	
1	A	453/475 (95%)	429 (95%)	24 (5%)	0	100	100

There are no Ramachandran outliers to report.

5.3.2 Protein sidechains [i](#)

In the following table, the Percentiles column shows the percent sidechain outliers of the chain as a percentile score with respect to all X-ray entries followed by that with respect to entries of similar resolution.

The Analysed column shows the number of residues for which the sidechain conformation was analysed, and the total number of residues.

Mol	Chain	Analysed	Rotameric	Outliers	Percentiles	
1	A	369/396 (93%)	328 (89%)	41 (11%)	6	19

All (41) residues with a non-rotameric sidechain are listed below:

Mol	Chain	Res	Type
1	A	4	GLU
1	A	28	ASP
1	A	44	THR
1	A	49	GLU
1	A	76	LEU

Continued on next page...

Continued from previous page...

Mol	Chain	Res	Type
1	A	84	VAL
1	A	209	ASP
1	A	218	GLN
1	A	230	MET
1	A	265	VAL
1	A	298	ASP
1	A	302	ARG
1	A	309	ASN
1	A	312	LEU
1	A	346	LEU
1	A	357	THR
1	A	363	LEU
1	A	367	LEU
1	A	382	ASP
1	A	400	ARG
1	A	413	ILE
1	A	428	SER
1	A	431	SER
1	A	444	LYS
1	A	449	MET
1	A	450[A]	LEU
1	A	450[B]	LEU
1	A	475	PHE
1	A	477	GLN
1	A	485	ARG
1	A	510	LYS
1	A	511	ASN
1	A	512	ARG
1	A	521	ASN
1	A	523	PHE
1	A	525	MET
1	A	532	MET
1	A	536	VAL
1	A	542	LEU
1	A	543	LEU
1	A	551	ARG

Some sidechains can be flipped to improve hydrogen bonding and reduce clashes. All (4) such sidechains are listed below:

Mol	Chain	Res	Type
1	A	216	GLN
1	A	491	GLN

Continued on next page...

Continued from previous page...

Mol	Chain	Res	Type
1	A	511	ASN
1	A	521	ASN

5.3.3 RNA ⓘ

There are no RNA molecules in this entry.

5.4 Non-standard residues in protein, DNA, RNA chains ⓘ

There are no non-standard protein/DNA/RNA residues in this entry.

5.5 Carbohydrates ⓘ

4 monosaccharides are modelled in this entry.

In the following table, the Counts columns list the number of bonds (or angles) for which Mogul statistics could be retrieved, the number of bonds (or angles) that are observed in the model and the number of bonds (or angles) that are defined in the Chemical Component Dictionary. The Link column lists molecule types, if any, to which the group is linked. The Z score for a bond length (or angle) is the number of standard deviations the observed value is removed from the expected value. A bond length (or angle) with $|Z| > 2$ is considered an outlier worth inspection. RMSZ is the root-mean-square of all Z scores of the bond lengths (or angles).

Mol	Type	Chain	Res	Link	Bond lengths			Bond angles		
					Counts	RMSZ	$\# Z > 2$	Counts	RMSZ	$\# Z > 2$
2	NAG	B	1	2	14,14,15	0.31	0	17,19,21	1.36	2 (11%)
2	NAG	B	2	2	14,14,15	0.25	0	17,19,21	0.55	0
2	BMA	B	3	2	11,11,12	0.68	0	15,15,17	1.68	3 (20%)
2	MAN	B	4	2	11,11,12	0.60	0	15,15,17	1.12	1 (6%)

In the following table, the Chirals column lists the number of chiral outliers, the number of chiral centers analysed, the number of these observed in the model and the number defined in the Chemical Component Dictionary. Similar counts are reported in the Torsion and Rings columns. '-' means no outliers of that kind were identified.

Mol	Type	Chain	Res	Link	Chirals	Torsions	Rings
2	NAG	B	1	2	-	2/6/23/26	0/1/1/1
2	NAG	B	2	2	-	0/6/23/26	0/1/1/1
2	BMA	B	3	2	-	1/2/19/22	0/1/1/1
2	MAN	B	4	2	-	0/2/19/22	0/1/1/1

There are no bond length outliers.

All (6) bond angle outliers are listed below:

Mol	Chain	Res	Type	Atoms	Z	Observed(°)	Ideal(°)
2	B	3	BMA	C1-O5-C5	4.80	118.70	112.19
2	B	1	NAG	O5-C1-C2	-3.76	105.35	111.29
2	B	4	MAN	C1-O5-C5	2.74	115.90	112.19
2	B	3	BMA	C1-C2-C3	2.32	112.51	109.67
2	B	1	NAG	C3-C4-C5	2.09	113.97	110.24
2	B	3	BMA	C3-C4-C5	2.08	113.95	110.24

There are no chirality outliers.

All (3) torsion outliers are listed below:

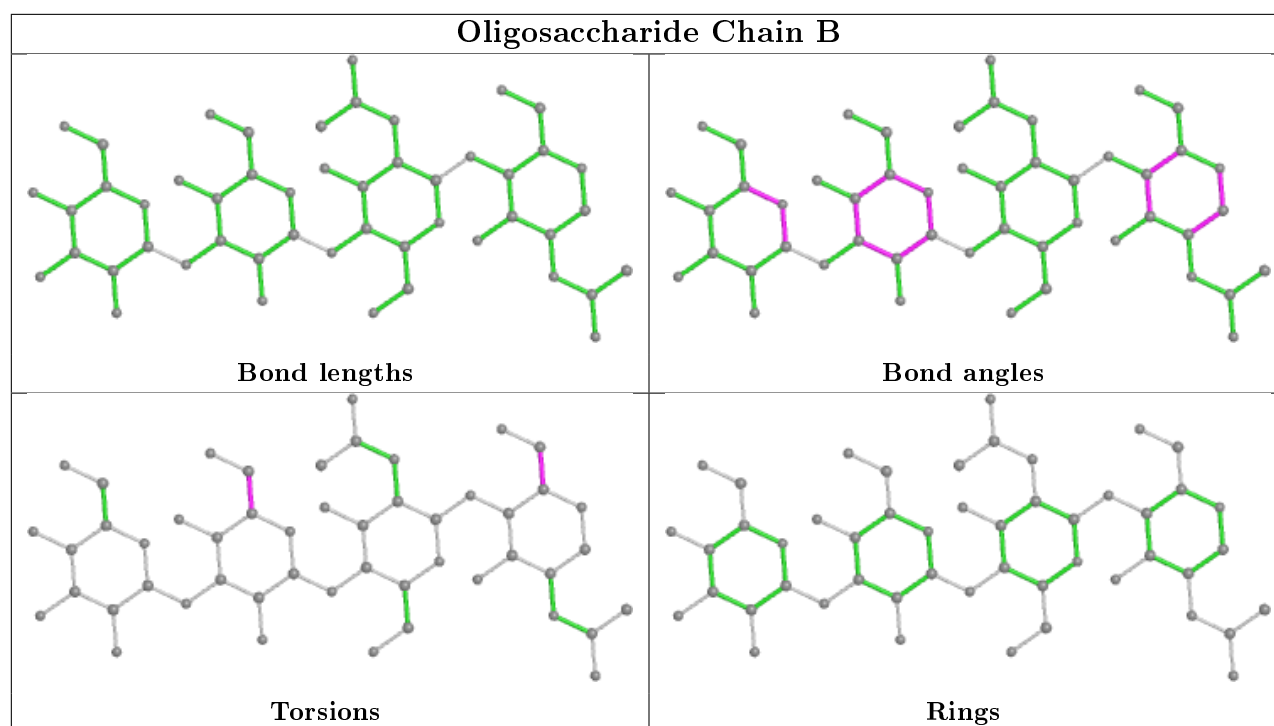
Mol	Chain	Res	Type	Atoms
2	B	1	NAG	O5-C5-C6-O6
2	B	3	BMA	O5-C5-C6-O6
2	B	1	NAG	C4-C5-C6-O6

There are no ring outliers.

1 monomer is involved in 1 short contact:

Mol	Chain	Res	Type	Clashes	Symm-Clashes
2	B	1	NAG	1	0

The following is a two-dimensional graphical depiction of Mogul quality analysis of bond lengths, bond angles, torsion angles, and ring geometry for oligosaccharide.



5.6 Ligand geometry [i](#)

Of 7 ligands modelled in this entry, 2 are monoatomic - leaving 5 for Mogul analysis.

In the following table, the Counts columns list the number of bonds (or angles) for which Mogul statistics could be retrieved, the number of bonds (or angles) that are observed in the model and the number of bonds (or angles) that are defined in the Chemical Component Dictionary. The Link column lists molecule types, if any, to which the group is linked. The Z score for a bond length (or angle) is the number of standard deviations the observed value is removed from the expected value. A bond length (or angle) with $|Z| > 2$ is considered an outlier worth inspection. RMSZ is the root-mean-square of all Z scores of the bond lengths (or angles).

Mol	Type	Chain	Res	Link	Bond lengths			Bond angles		
					Counts	RMSZ	# Z > 2	Counts	RMSZ	# Z > 2
3	SNT	A	605	-	29,31,31	2.42	7 (24%)	34,42,42	1.06	4 (11%)
5	OLC	A	608	-	14,14,24	1.31	1 (7%)	15,15,25	0.98	1 (6%)
7	PG4	A	611	-	12,12,12	0.30	0	11,11,11	0.42	0
5	OLC	A	609	-	13,13,24	1.40	1 (7%)	14,14,25	1.14	1 (7%)
6	PEG	A	610	-	6,6,6	0.35	0	5,5,5	0.24	0

In the following table, the Chirals column lists the number of chiral outliers, the number of chiral centers analysed, the number of these observed in the model and the number defined in the Chemical Component Dictionary. Similar counts are reported in the Torsion and Rings columns. '-' means no outliers of that kind were identified.

Mol	Type	Chain	Res	Link	Chirals	Torsions	Rings
3	SNT	A	605	-	-	0/11/23/23	0/4/4/4
5	OLC	A	608	-	-	10/14/14/24	-
7	PG4	A	611	-	-	5/10/10/10	-
5	OLC	A	609	-	-	5/13/13/24	-
6	PEG	A	610	-	-	1/4/4/4	-

All (9) bond length outliers are listed below:

Mol	Chain	Res	Type	Atoms	Z	Observed(Å)	Ideal(Å)
3	A	605	SNT	C10-C11	-6.64	1.39	1.51
3	A	605	SNT	N5-N1	-6.31	1.27	1.39
3	A	605	SNT	C6-C7	-5.66	1.35	1.46
5	A	609	OLC	O20-C1	4.80	1.47	1.33
5	A	608	OLC	O20-C1	4.66	1.46	1.33
3	A	605	SNT	C6-C17	-3.44	1.35	1.38
3	A	605	SNT	C4-N1	-3.15	1.34	1.44
3	A	605	SNT	C7-N2	2.73	1.35	1.27
3	A	605	SNT	C23-C5	2.16	1.54	1.49

All (6) bond angle outliers are listed below:

Mol	Chain	Res	Type	Atoms	Z	Observed(°)	Ideal(°)
5	A	609	OLC	O20-C1-C2	2.69	120.35	111.91
3	A	605	SNT	C6-C7-N2	-2.45	117.98	121.54
3	A	605	SNT	C5-N1-N5	-2.39	108.29	111.61
5	A	608	OLC	O20-C1-C2	2.22	118.86	111.91
3	A	605	SNT	C7-N2-N3	2.15	123.45	120.43
3	A	605	SNT	C10-N4-C9	2.06	115.64	111.06

There are no chirality outliers.

All (21) torsion outliers are listed below:

Mol	Chain	Res	Type	Atoms
5	A	608	OLC	O20-C21-C22-O23
7	A	611	PG4	C6-C5-O3-C4
7	A	611	PG4	O3-C5-C6-O4
5	A	608	OLC	C2-C1-O20-C21
5	A	608	OLC	O19-C1-O20-C21
5	A	608	OLC	C1-C2-C3-C4
7	A	611	PG4	O2-C3-C4-O3
5	A	608	OLC	O20-C21-C22-C24

Continued on next page...

Continued from previous page...

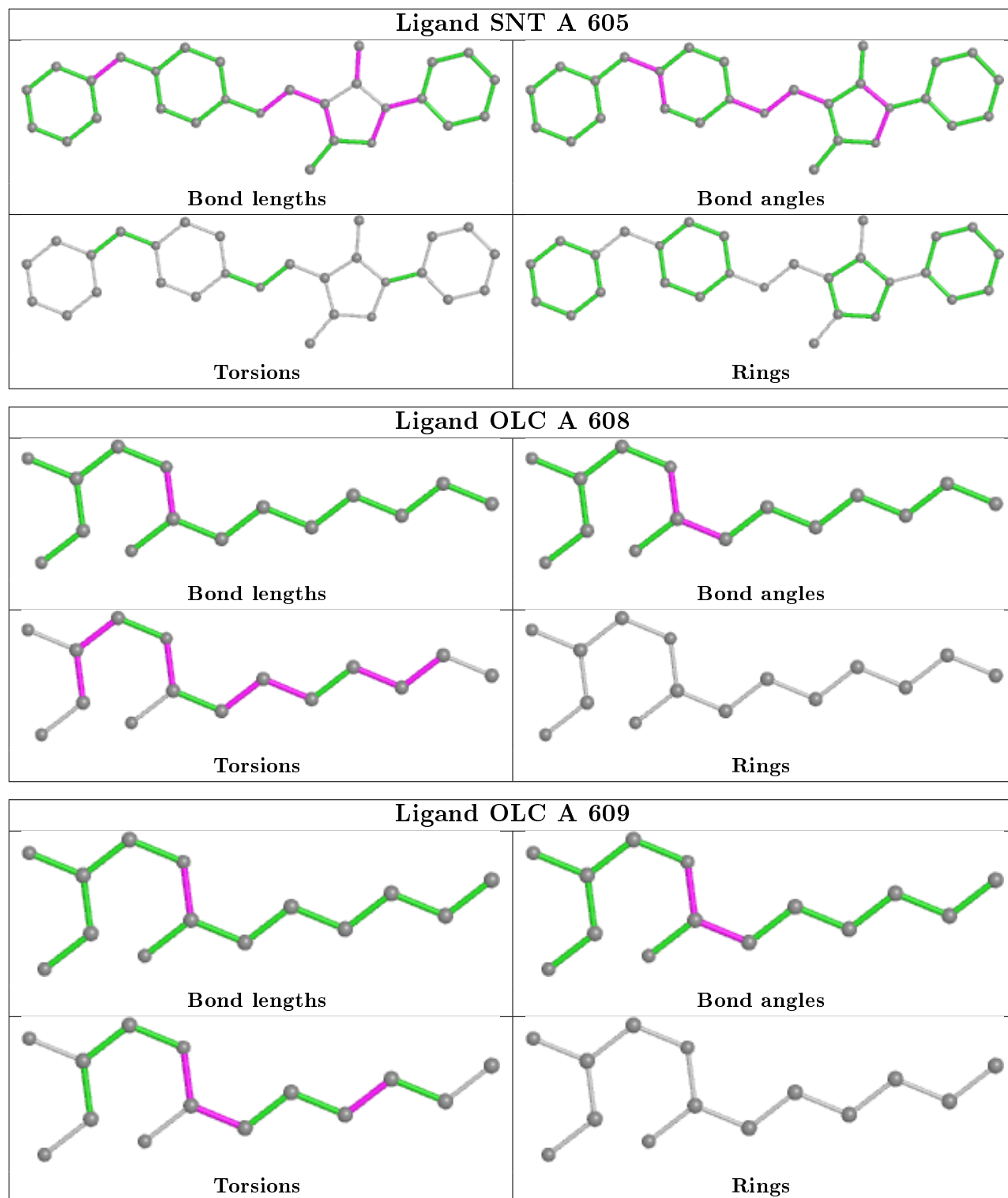
Mol	Chain	Res	Type	Atoms
5	A	608	OLC	C2-C3-C4-C5
5	A	608	OLC	C21-C22-C24-O25
5	A	608	OLC	C4-C5-C6-C7
5	A	608	OLC	O23-C22-C24-O25
5	A	609	OLC	C2-C1-O20-C21
5	A	609	OLC	O19-C1-O20-C21
5	A	608	OLC	C5-C6-C7-C8
7	A	611	PG4	C1-C2-O2-C3
5	A	609	OLC	C3-C4-C5-C6
6	A	610	PEG	C4-C3-O2-C2
7	A	611	PG4	C3-C4-O3-C5
5	A	609	OLC	O20-C1-C2-C3
5	A	609	OLC	O19-C1-C2-C3

There are no ring outliers.

3 monomers are involved in 7 short contacts:

Mol	Chain	Res	Type	Clashes	Symm-Clashes
3	A	605	SNT	4	0
5	A	608	OLC	2	0
7	A	611	PG4	1	0

The following is a two-dimensional graphical depiction of Mogul quality analysis of bond lengths, bond angles, torsion angles, and ring geometry for all instances of the Ligand of Interest. In addition, ligands with molecular weight > 250 and outliers as shown on the validation Tables will also be included. For torsion angles, if less than 5% of the Mogul distribution of torsion angles is within 10 degrees of the torsion angle in question, then that torsion angle is considered an outlier. Any bond that is central to one or more torsion angles identified as an outlier by Mogul will be highlighted in the graph. For rings, the root-mean-square deviation (RMSD) between the ring in question and similar rings identified by Mogul is calculated over all ring torsion angles. If the average RMSD is greater than 60 degrees and the minimal RMSD between the ring in question and any Mogul-identified rings is also greater than 60 degrees, then that ring is considered an outlier. The outliers are highlighted in purple. The color gray indicates Mogul did not find sufficient equivalents in the CSD to analyse the geometry.



5.7 Other polymers ⓘ

There are no such residues in this entry.

5.8 Polymer linkage issues ⓘ

There are no chain breaks in this entry.

6 Fit of model and data [i](#)

6.1 Protein, DNA and RNA chains [i](#)

In the following table, the column labelled ‘#RSRZ> 2’ contains the number (and percentage) of RSRZ outliers, followed by percent RSRZ outliers for the chain as percentile scores relative to all X-ray entries and entries of similar resolution. The OWAB column contains the minimum, median, 95th percentile and maximum values of the occupancy-weighted average B-factor per residue. The column labelled ‘Q< 0.9’ lists the number of (and percentage) of residues with an average occupancy less than 0.9.

Mol	Chain	Analysed	<RSRZ>	#RSRZ>2	OWAB(Å ²)	Q<0.9
1	A	457/475 (96%)	-0.06	7 (1%) 73 68	52, 75, 114, 178	0

All (7) RSRZ outliers are listed below:

Mol	Chain	Res	Type	RSRZ
1	A	439	GLU	4.6
1	A	-2	GLY	4.5
1	A	38	LEU	2.6
1	A	88	GLN	2.6
1	A	87	ALA	2.5
1	A	90	ALA	2.4
1	A	91	ALA	2.4

6.2 Non-standard residues in protein, DNA, RNA chains [i](#)

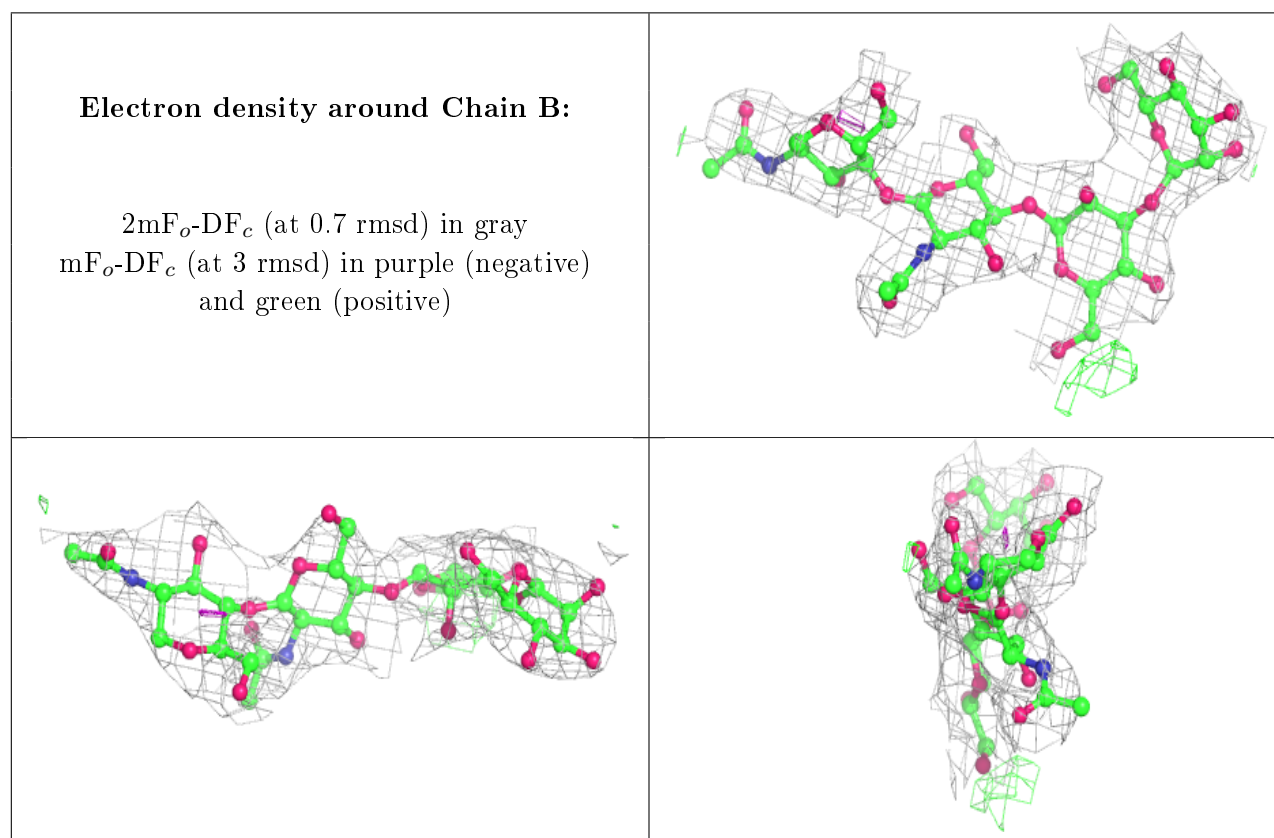
There are no non-standard protein/DNA/RNA residues in this entry.

6.3 Carbohydrates [i](#)

In the following table, the Atoms column lists the number of modelled atoms in the group and the number defined in the chemical component dictionary. The B-factors column lists the minimum, median, 95th percentile and maximum values of B factors of atoms in the group. The column labelled ‘Q< 0.9’ lists the number of atoms with occupancy less than 0.9.

Mol	Type	Chain	Res	Atoms	RSCC	RSR	B-factors(Å ²)	Q<0.9
2	BMA	B	3	11/12	0.79	0.17	120,121,125,126	0
2	NAG	B	1	14/15	0.79	0.20	119,120,121,122	0
2	NAG	B	2	14/15	0.90	0.21	113,120,124,125	0
2	MAN	B	4	11/12	0.92	0.17	113,115,115,115	0

The following is a graphical depiction of the model fit to experimental electron density for oligosaccharide. Each fit is shown from different orientation to approximate a three-dimensional view.



6.4 Ligands ⓘ

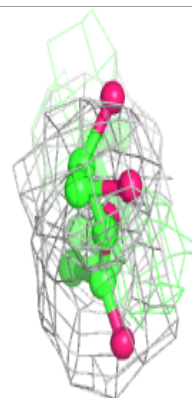
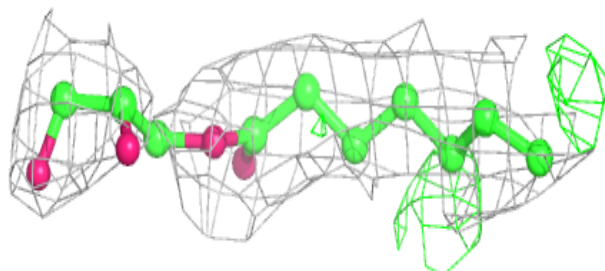
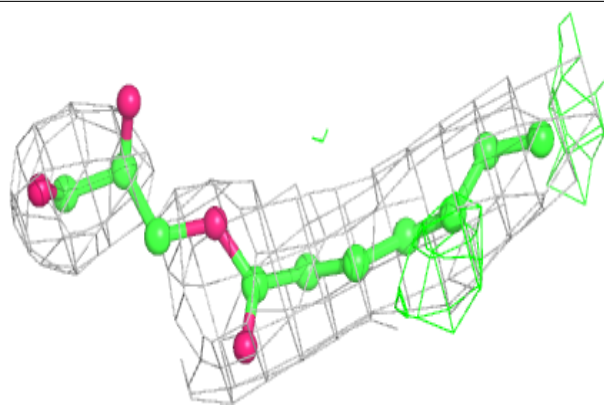
In the following table, the Atoms column lists the number of modelled atoms in the group and the number defined in the chemical component dictionary. The B-factors column lists the minimum, median, 95th percentile and maximum values of B factors of atoms in the group. The column labelled 'Q< 0.9' lists the number of atoms with occupancy less than 0.9.

Mol	Type	Chain	Res	Atoms	RSCC	RSR	B-factors(Å ²)	Q<0.9
7	PG4	A	611	13/13	0.63	0.26	112,121,124,124	0
5	OLC	A	609	14/25	0.73	0.22	87,96,101,101	0
5	OLC	A	608	15/25	0.78	0.33	86,96,102,104	0
6	PEG	A	610	7/7	0.85	0.18	90,93,94,94	0
3	SNT	A	605	28/28	0.95	0.23	66,74,77,78	0
4	ZN	A	606	1/1	0.99	0.17	64,64,64,64	1
4	ZN	A	607	1/1	0.99	0.12	78,78,78,78	0

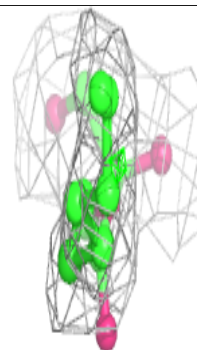
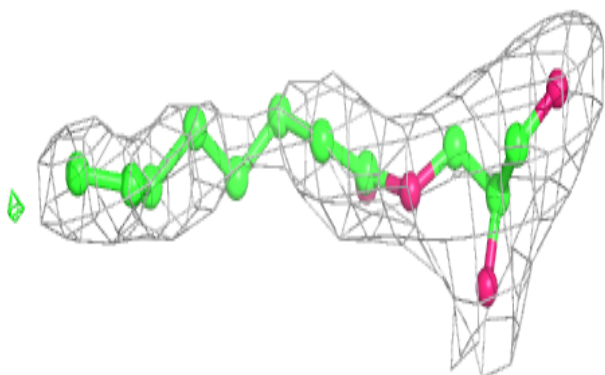
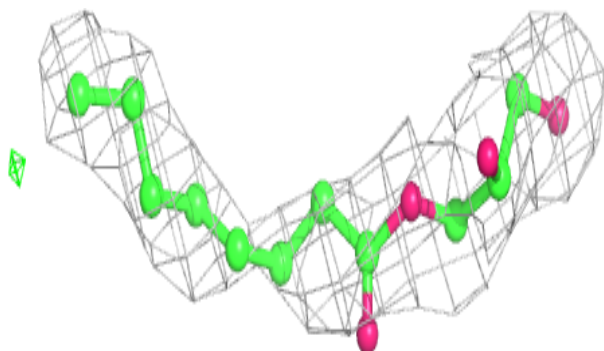
The following is a graphical depiction of the model fit to experimental electron density of all instances of the Ligand of Interest. In addition, ligands with molecular weight > 250 and outliers as shown on the geometry validation Tables will also be included. Each fit is shown from different orientation to approximate a three-dimensional view.

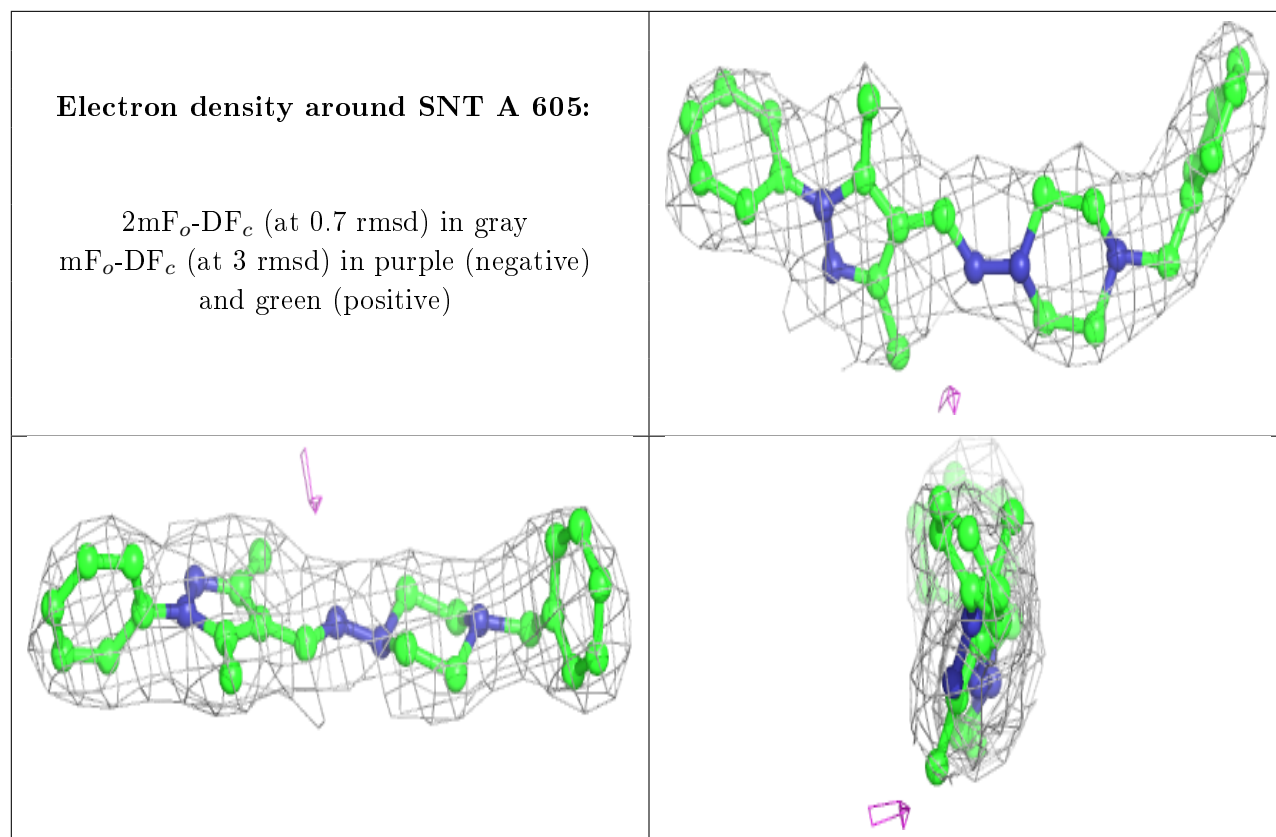
Electron density around OLC A 609:

$2mF_o-DF_c$ (at 0.7 rmsd) in gray
 mF_o-DF_c (at 3 rmsd) in purple (negative)
and green (positive)

**Electron density around OLC A 608:**

$2mF_o-DF_c$ (at 0.7 rmsd) in gray
 mF_o-DF_c (at 3 rmsd) in purple (negative)
and green (positive)





6.5 Other polymers [i](#)

There are no such residues in this entry.