



# Full wwPDB X-ray Structure Validation Report ⓘ

May 18, 2020 – 02:35 pm BST

PDB ID : 4N5S  
Title : Ternary complex structure of Klenow fragment of Taq DNA polymerase I707L mutant (Cs3C KlenTaq) with DNA and ddCTP  
Authors : Wu, E.Y.  
Deposited on : 2013-10-10  
Resolution : 1.67 Å(reported)

This is a Full wwPDB X-ray Structure Validation Report for a publicly released PDB entry.

We welcome your comments at [validation@mail.wwpdb.org](mailto:validation@mail.wwpdb.org)

A user guide is available at

<https://www.wwpdb.org/validation/2017/XrayValidationReportHelp>

with specific help available everywhere you see the ⓘ symbol.

---

The following versions of software and data (see [references ⓘ](#)) were used in the production of this report:

MolProbity : 4.02b-467  
Mogul : 1.8.5 (274361), CSD as541be (2020)  
Xtriage (Phenix) : 1.13  
EDS : 2.11  
buster-report : 1.1.7 (2018)  
Percentile statistics : 20191225.v01 (using entries in the PDB archive December 25th 2019)  
Refmac : 5.8.0158  
CCP4 : 7.0.044 (Gargrove)  
Ideal geometry (proteins) : Engh & Huber (2001)  
Ideal geometry (DNA, RNA) : Parkinson et al. (1996)  
Validation Pipeline (wwPDB-VP) : 2.11

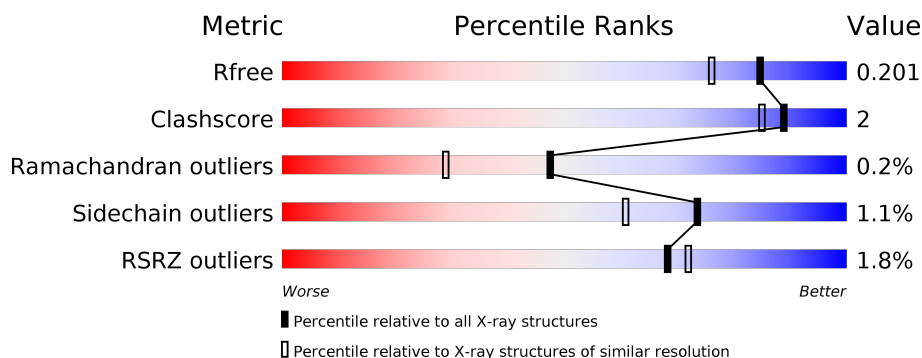
# 1 Overall quality at a glance

The following experimental techniques were used to determine the structure:

## *X-RAY DIFFRACTION*

The reported resolution of this entry is 1.67 Å.

Percentile scores (ranging between 0-100) for global validation metrics of the entry are shown in the following graphic. The table shows the number of entries on which the scores are based.



Metric	Whole archive (#Entries)	Similar resolution (#Entries, resolution range(Å))
$R_{free}$	130704	6780 (1.70-1.66)
Clashscore	141614	7310 (1.70-1.66)
Ramachandran outliers	138981	7173 (1.70-1.66)
Sidechain outliers	138945	7172 (1.70-1.66)
RSRZ outliers	127900	6661 (1.70-1.66)

The table below summarises the geometric issues observed across the polymeric chains and their fit to the electron density. The red, orange, yellow and green segments on the lower bar indicate the fraction of residues that contain outliers for  $\geq 3$ , 2, 1 and 0 types of geometric quality criteria respectively. A grey segment represents the fraction of residues that are not modelled. The numeric value for each fraction is indicated below the corresponding segment, with a dot representing fractions  $\leq 5\%$ . The upper red bar (where present) indicates the fraction of residues that have poor fit to the electron density. The numeric value is given above the bar.

Mol	Chain	Length	Quality of chain
1	B	12	<div> <div style="width: 75%;"></div> <div style="width: 25%;"></div> </div> <div>75% 25%</div>
2	C	16	<div> <div style="width: 56%;"></div> <div style="width: 31%;"></div> <div style="width: 13%;"></div> </div> <div>56% 31% 13%</div>
3	A	553	<div> <div style="width: 2%;"></div> <div style="width: 93%;"></div> <div style="width: 5%;"></div> </div> <div>2% 93% 5%</div>

## 2 Entry composition

There are 10 unique types of molecules in this entry. The entry contains 5394 atoms, of which 0 are hydrogens and 0 are deuteriums.

In the tables below, the ZeroOcc column contains the number of atoms modelled with zero occupancy, the AltConf column contains the number of residues with at least one atom in alternate conformation and the Trace column contains the number of residues modelled with at most 2 atoms.

- Molecule 1 is a DNA chain called 5'-D(\*GP\*AP\*CP\*CP\*AP\*CP\*GP\*GP\*CP\*GP\*CP\*(D OC))-3'.

Mol	Chain	Residues	Atoms					ZeroOcc	AltConf	Trace
1	B	12	Total	C	N	O	P	0	0	0
			240	114	48	67	11			

- Molecule 2 is a DNA chain called 5'-D(\*AP\*A\*AP\*GP\*GP\*GP\*CP\*GP\*CP\*CP\*GP\*TP\*GP\*GP\*TP\*C)-3'.

Mol	Chain	Residues	Atoms					ZeroOcc	AltConf	Trace
2	C	14	Total	C	N	O	P	0	0	1
			271	126	51	81	13			

- Molecule 3 is a protein called DNA polymerase I, thermostable.

Mol	Chain	Residues	Atoms					ZeroOcc	AltConf	Trace
3	A	542	Total	C	N	O	S	0	0	0
			4286	2725	771	777	13			

There are 2 discrepancies between the modelled and reference sequences:

Chain	Residue	Modelled	Actual	Comment	Reference
A	280	MET	-	INITIATING METHIONINE	UNP P19821
A	707	LEU	ILE	ENGINEERED MUTATION	UNP P19821

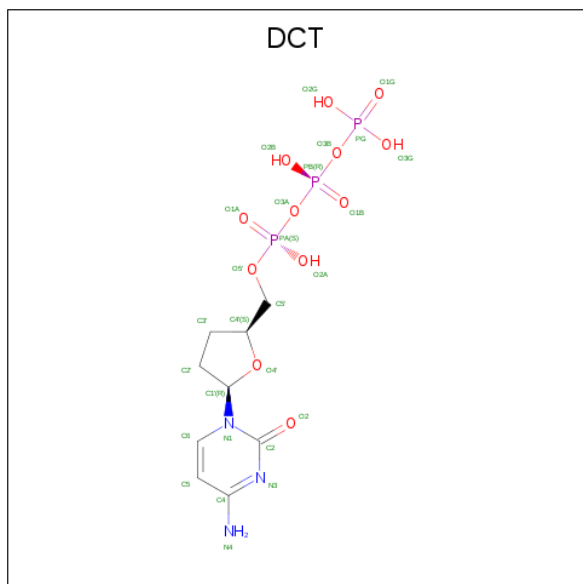
- Molecule 4 is MANGANESE (II) ION (three-letter code: MN) (formula: Mn).

Mol	Chain	Residues	Atoms		ZeroOcc	AltConf
4	B	1	Total	Mn	0	0
			1	1		
4	A	5	Total	Mn	0	0
			5	5		

- Molecule 5 is MAGNESIUM ION (three-letter code: MG) (formula: Mg).

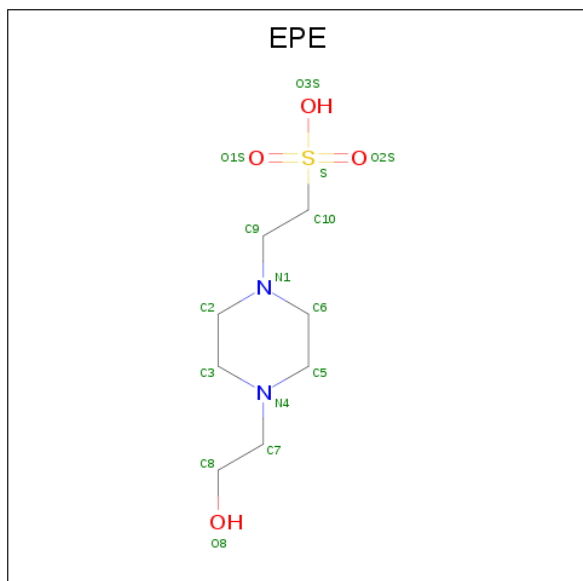
Mol	Chain	Residues	Atoms		ZeroOcc	AltConf
5	A	1	Total	Mg	0	0
			1	1		

- Molecule 6 is 2',3'-DIDEOXYCYTIDINE 5'-TRIPHOSPHATE (three-letter code: DCT) (formula:  $C_9H_{16}N_3O_{12}P_3$ ).



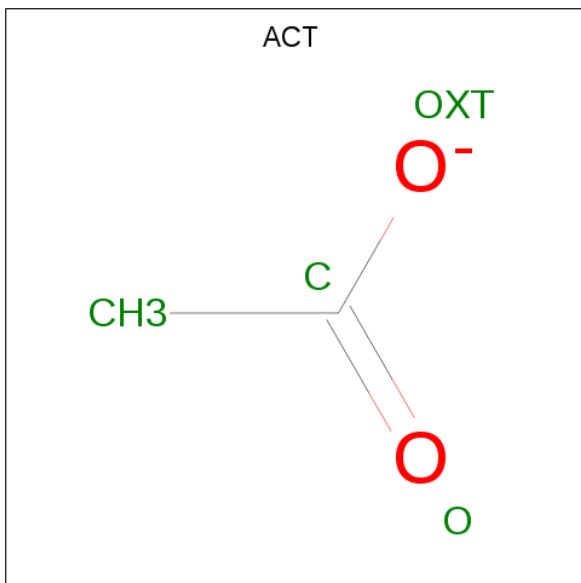
Mol	Chain	Residues	Atoms					ZeroOcc	AltConf
6	A	1	Total	C	N	O	P	0	0
			27	9	3	12	3		

- Molecule 7 is 4-(2-HYDROXYETHYL)-1-PIPERAZINE ETHANESULFONIC ACID (three-letter code: EPE) (formula:  $C_8H_{18}N_2O_4S$ ).



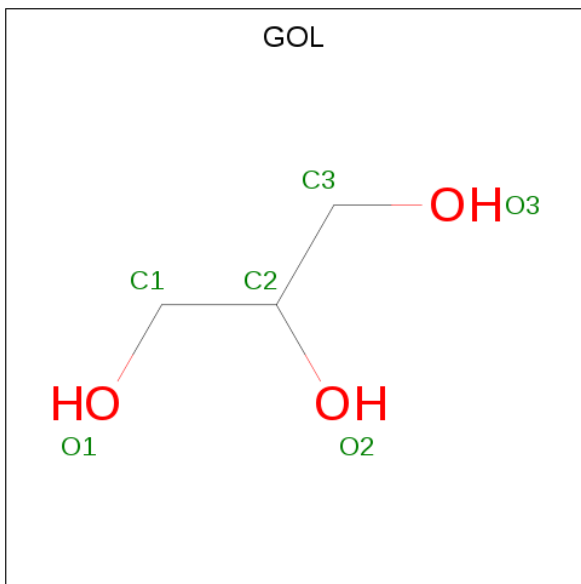
Mol	Chain	Residues	Atoms					ZeroOcc	AltConf
7	A	1	Total	C	N	O	S	0	0
			15	8	2	4	1		

- Molecule 8 is ACETATE ION (three-letter code: ACT) (formula:  $C_2H_3O_2$ ).



Mol	Chain	Residues	Atoms			ZeroOcc	AltConf
8	A	1	Total	C	O	0	0
			4	2	2		
8	A	1	Total	C	O	0	0
			4	2	2		

- Molecule 9 is GLYCEROL (three-letter code: GOL) (formula:  $C_3H_8O_3$ ).



Mol	Chain	Residues	Atoms			ZeroOcc	AltConf
9	A	1	Total	C	O	0	0
			6	3	3		

- Molecule 10 is water.

Mol	Chain	Residues	Atoms		ZeroOcc	AltConf
10	B	42	Total	O	0	0
			42	42		
10	C	48	Total	O	0	0
			48	48		
10	A	444	Total	O	0	0
			444	444		

### 3 Residue-property plots [i](#)

These plots are drawn for all protein, RNA and DNA chains in the entry. The first graphic for a chain summarises the proportions of the various outlier classes displayed in the second graphic. The second graphic shows the sequence view annotated by issues in geometry and electron density. Residues are color-coded according to the number of geometric quality criteria for which they contain at least one outlier: green = 0, yellow = 1, orange = 2 and red = 3 or more. A red dot above a residue indicates a poor fit to the electron density ( $RSRZ > 2$ ). Stretches of 2 or more consecutive residues without any outlier are shown as a green connector. Residues present in the sample, but not in the model, are shown in grey.

- Molecule 1: 5'-D(\*GP\*AP\*CP\*CP\*AP\*CP\*GP\*GP\*CP\*GP\*CP\*(DOC))-3'

Chain B: 



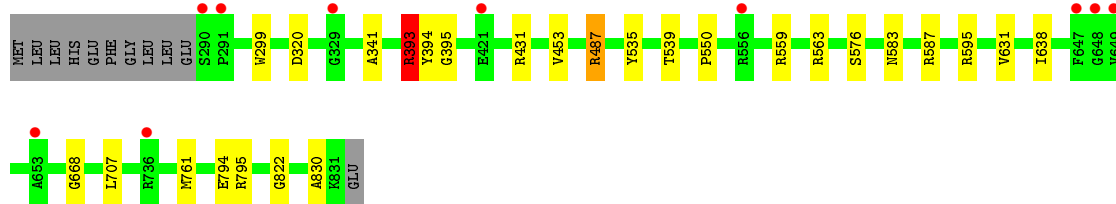
- Molecule 2: 5'-D(\*AP\*A\*AP\*GP\*GP\*GP\*CP\*GP\*CP\*CP\*GP\*TP\*GP\*GP\*TP\*C)-3'

Chain C: 



- Molecule 3: DNA polymerase I, thermostable

Chain A: 



## 4 Data and refinement statistics

Property	Value	Source
Space group	P 31 2 1	Depositor
Cell constants a, b, c, $\alpha$ , $\beta$ , $\gamma$	107.66 Å   107.66 Å   89.66 Å 90.00°   90.00°   120.00°	Depositor
Resolution (Å)	32.80 – 1.67 32.80 – 1.67	Depositor EDS
% Data completeness (in resolution range)	97.3 (32.80-1.67) 97.3 (32.80-1.67)	Depositor EDS
$R_{merge}$	(Not available)	Depositor
$R_{sym}$	0.05	Depositor
$\langle I/\sigma(I) \rangle$ <sup>1</sup>	2.61 (at 1.67 Å)	Xtriage
Refinement program	REFMAC 5.7.0029	Depositor
R, $R_{free}$	0.161 , 0.192 0.171 , 0.201	Depositor DCC
$R_{free}$ test set	3432 reflections (5.05%)	wwPDB-VP
Wilson B-factor (Å <sup>2</sup> )	20.4	Xtriage
Anisotropy	0.027	Xtriage
Bulk solvent $k_{sol}$ (e/Å <sup>3</sup> ), $B_{sol}$ (Å <sup>2</sup> )	0.39 , 45.4	EDS
L-test for twinning <sup>2</sup>	$\langle  L  \rangle = 0.49$ , $\langle L^2 \rangle = 0.33$	Xtriage
Estimated twinning fraction	0.023 for -h,-k,l	Xtriage
$F_o, F_c$ correlation	0.96	EDS
Total number of atoms	5394	wwPDB-VP
Average B, all atoms (Å <sup>2</sup> )	25.0	wwPDB-VP

Xtriage's analysis on translational NCS is as follows: *The largest off-origin peak in the Patterson function is 3.69% of the height of the origin peak. No significant pseudotranslation is detected.*

<sup>1</sup>Intensities estimated from amplitudes.

<sup>2</sup>Theoretical values of  $\langle |L| \rangle$ ,  $\langle L^2 \rangle$  for acentric reflections are 0.5, 0.333 respectively for untwinned datasets, and 0.375, 0.2 for perfectly twinned datasets.



## 5 Model quality

### 5.1 Standard geometry

Bond lengths and bond angles in the following residue types are not validated in this section: GOL, MG, DOC, MN, ACT, DCT, EPE

The Z score for a bond length (or angle) is the number of standard deviations the observed value is removed from the expected value. A bond length (or angle) with  $|Z| > 5$  is considered an outlier worth inspection. RMSZ is the root-mean-square of all Z scores of the bond lengths (or angles).

Mol	Chain	Bond lengths		Bond angles	
		RMSZ	$\# Z  > 5$	RMSZ	$\# Z  > 5$
1	B	0.53	0/249	0.91	1/382 (0.3%)
2	C	0.59	0/303	0.95	1/468 (0.2%)
3	A	0.60	0/4377	0.80	7/5932 (0.1%)
All	All	0.59	0/4929	0.82	9/6782 (0.1%)

There are no bond length outliers.

All (9) bond angle outliers are listed below:

Mol	Chain	Res	Type	Atoms	Z	Observed(°)	Ideal(°)
3	A	393	ARG	NE-CZ-NH1	10.49	125.55	120.30
3	A	559	ARG	NE-CZ-NH1	7.88	124.24	120.30
1	B	108	DG	C1'-O4'-C4'	-7.40	102.70	110.10
3	A	761	MET	CG-SD-CE	-6.75	89.41	100.20
3	A	393	ARG	NE-CZ-NH2	-6.62	116.99	120.30
3	A	320	ASP	CB-CG-OD2	-5.88	113.01	118.30
2	C	215	DT	C1'-O4'-C4'	-5.61	104.49	110.10
3	A	559	ARG	NE-CZ-NH2	-5.50	117.55	120.30
3	A	320	ASP	CB-CG-OD1	5.16	122.94	118.30

There are no chirality outliers.

There are no planarity outliers.

### 5.2 Too-close contacts

In the following table, the Non-H and H(model) columns list the number of non-hydrogen atoms and hydrogen atoms in the chain respectively. The H(added) column lists the number of hydrogen atoms added and optimized by MolProbity. The Clashes column lists the number of clashes within the asymmetric unit, whereas Symm-Clashes lists symmetry related clashes.

Mol	Chain	Non-H	H(model)	H(added)	Clashes	Symm-Clashes
1	B	240	0	134	1	0
2	C	271	0	146	3	0
3	A	4286	0	4330	15	0
4	A	5	0	0	0	0
4	B	1	0	0	0	0
5	A	1	0	0	0	0
6	A	27	0	12	0	0
7	A	15	0	18	1	0
8	A	8	0	6	1	0
9	A	6	0	8	0	0
10	A	444	0	0	3	0
10	B	42	0	0	0	0
10	C	48	0	0	0	0
All	All	5394	0	4654	18	0

The all-atom clashscore is defined as the number of clashes found per 1000 atoms (including hydrogen atoms). The all-atom clashscore for this structure is 2.

All (18) close contacts within the same asymmetric unit are listed below, sorted by their clash magnitude.

Atom-1	Atom-2	Interatomic distance (Å)	Clash overlap (Å)
3:A:631:VAL:HG11	3:A:638:ILE:HD11	1.84	0.58
3:A:431:ARG:NH2	10:A:1290:HOH:O	2.41	0.53
3:A:595:ARG:HD3	10:A:1033:HOH:O	2.10	0.52
2:C:204:DG:C4	3:A:668:GLY:HA2	2.45	0.51
7:A:908:EPE:H62	10:A:1088:HOH:O	2.11	0.50
3:A:487:ARG:HG3	8:A:909:ACT:C	2.42	0.50
1:B:102:DA:H2'	1:B:103:DC:C6	2.48	0.48
2:C:210:DC:H2'	2:C:211:DG:C8	2.48	0.48
3:A:393:ARG:HG2	3:A:394:TYR:CE2	2.48	0.47
3:A:393:ARG:O	3:A:393:ARG:HG3	2.15	0.46
3:A:299:TRP:CZ2	3:A:341:ALA:HB1	2.53	0.44
3:A:393:ARG:HG2	3:A:394:TYR:CZ	2.53	0.44
3:A:453:VAL:HG13	3:A:550:PRO:HB3	1.99	0.43
3:A:563:ARG:O	3:A:576:SER:HA	2.19	0.43
3:A:822:GLY:HA3	3:A:830:ALA:O	2.20	0.42
2:C:208:DG:H4'	3:A:576:SER:O	2.20	0.41
3:A:794:GLU:HG2	3:A:795:ARG:HG3	2.03	0.40
3:A:535:TYR:CZ	3:A:539:THR:HG21	2.56	0.40

There are no symmetry-related clashes.

## 5.3 Torsion angles [i](#)

### 5.3.1 Protein backbone [i](#)

In the following table, the Percentiles column shows the percent Ramachandran outliers of the chain as a percentile score with respect to all X-ray entries followed by that with respect to entries of similar resolution.

The Analysed column shows the number of residues for which the backbone conformation was analysed, and the total number of residues.

Mol	Chain	Analysed	Favoured	Allowed	Outliers	Percentiles	
3	A	540/553 (98%)	525 (97%)	14 (3%)	1 (0%)	47	29

All (1) Ramachandran outliers are listed below:

Mol	Chain	Res	Type
3	A	395	GLY

### 5.3.2 Protein sidechains [i](#)

In the following table, the Percentiles column shows the percent sidechain outliers of the chain as a percentile score with respect to all X-ray entries followed by that with respect to entries of similar resolution.

The Analysed column shows the number of residues for which the sidechain conformation was analysed, and the total number of residues.

Mol	Chain	Analysed	Rotameric	Outliers	Percentiles	
3	A	439/453 (97%)	434 (99%)	5 (1%)	73	61

All (5) residues with a non-rotameric sidechain are listed below:

Mol	Chain	Res	Type
3	A	393	ARG
3	A	487	ARG
3	A	583	ASN
3	A	587	ARG
3	A	707	LEU

Some sidechains can be flipped to improve hydrogen bonding and reduce clashes. All (1) such sidechains are listed below:

Mol	Chain	Res	Type
3	A	583	ASN

### 5.3.3 RNA ⓘ

There are no RNA molecules in this entry.

## 5.4 Non-standard residues in protein, DNA, RNA chains ⓘ

1 non-standard protein/DNA/RNA residue is modelled in this entry.

In the following table, the Counts columns list the number of bonds (or angles) for which Mogul statistics could be retrieved, the number of bonds (or angles) that are observed in the model and the number of bonds (or angles) that are defined in the Chemical Component Dictionary. The Link column lists molecule types, if any, to which the group is linked. The Z score for a bond length (or angle) is the number of standard deviations the observed value is removed from the expected value. A bond length (or angle) with  $|Z| > 2$  is considered an outlier worth inspection. RMSZ is the root-mean-square of all Z scores of the bond lengths (or angles).

Mol	Type	Chain	Res	Link	Bond lengths			Bond angles		
					Counts	RMSZ	$\# Z  > 2$	Counts	RMSZ	$\# Z  > 2$
1	DOC	B	112	1,2	14,19,20	0.84	0	13,26,29	1.80	2 (15%)

In the following table, the Chirals column lists the number of chiral outliers, the number of chiral centers analysed, the number of these observed in the model and the number defined in the Chemical Component Dictionary. Similar counts are reported in the Torsion and Rings columns. '-' means no outliers of that kind were identified.

Mol	Type	Chain	Res	Link	Chirals	Torsions	Rings
1	DOC	B	112	1,2	-	0/4/18/19	0/2/2/2

There are no bond length outliers.

All (2) bond angle outliers are listed below:

Mol	Chain	Res	Type	Atoms	Z	Observed(°)	Ideal(°)
1	B	112	DOC	C2-N3-C4	4.69	121.10	116.34
1	B	112	DOC	C4'-O4'-C1'	-2.64	107.31	109.81

There are no chirality outliers.

There are no torsion outliers.

There are no ring outliers.

No monomer is involved in short contacts.

## 5.5 Carbohydrates [i](#)

There are no carbohydrates in this entry.

## 5.6 Ligand geometry [i](#)

Of 12 ligands modelled in this entry, 7 are monoatomic - leaving 5 for Mogul analysis.

In the following table, the Counts columns list the number of bonds (or angles) for which Mogul statistics could be retrieved, the number of bonds (or angles) that are observed in the model and the number of bonds (or angles) that are defined in the Chemical Component Dictionary. The Link column lists molecule types, if any, to which the group is linked. The Z score for a bond length (or angle) is the number of standard deviations the observed value is removed from the expected value. A bond length (or angle) with  $|Z| > 2$  is considered an outlier worth inspection. RMSZ is the root-mean-square of all Z scores of the bond lengths (or angles).

Mol	Type	Chain	Res	Link	Bond lengths			Bond angles		
					Counts	RMSZ	$\# Z  > 2$	Counts	RMSZ	$\# Z  > 2$
8	ACT	A	909	-	1,3,3	3.22	1 (100%)	0,3,3	0.00	-
8	ACT	A	910	-	1,3,3	0.93	0	0,3,3	0.00	-
9	GOL	A	911	-	5,5,5	0.22	0	5,5,5	0.24	0
6	DCT	A	907	5,4	22,28,28	0.82	1 (4%)	26,43,43	1.70	2 (7%)
7	EPE	A	908	-	15,15,15	1.66	1 (6%)	18,20,20	2.39	10 (55%)

In the following table, the Chirals column lists the number of chiral outliers, the number of chiral centers analysed, the number of these observed in the model and the number defined in the Chemical Component Dictionary. Similar counts are reported in the Torsion and Rings columns. '-' means no outliers of that kind were identified.

Mol	Type	Chain	Res	Link	Chirals	Torsions	Rings
6	DCT	A	907	5,4	-	0/19/31/31	0/2/2/2
9	GOL	A	911	-	-	0/4/4/4	-
7	EPE	A	908	-	-	4/9/19/19	0/1/1/1

All (3) bond length outliers are listed below:

Mol	Chain	Res	Type	Atoms	Z	Observed(Å)	Ideal(Å)
7	A	908	EPE	C10-S	-5.62	1.69	1.77
8	A	909	ACT	CH3-C	3.22	1.52	1.48
6	A	907	DCT	C2-N3	-2.32	1.33	1.38

All (12) bond angle outliers are listed below:

Mol	Chain	Res	Type	Atoms	Z	Observed(°)	Ideal(°)
6	A	907	DCT	C2-N3-C4	5.80	122.22	116.34
7	A	908	EPE	C7-N4-C5	4.82	123.55	111.23
6	A	907	DCT	C2'-C1'-N1	-3.71	105.49	112.48
7	A	908	EPE	C5-N4-C3	3.53	116.77	108.83
7	A	908	EPE	C6-N1-C2	3.24	116.13	108.83
7	A	908	EPE	C2-C3-N4	3.08	116.95	110.64
7	A	908	EPE	O2S-S-C10	2.74	110.21	106.92
7	A	908	EPE	C9-N1-C6	2.64	117.98	111.23
7	A	908	EPE	C9-N1-C2	2.46	117.53	111.23
7	A	908	EPE	C6-C5-N4	-2.38	105.75	110.64
7	A	908	EPE	C3-C2-N1	2.05	114.85	110.64
7	A	908	EPE	O1S-S-C10	-2.04	104.46	106.92

There are no chirality outliers.

All (4) torsion outliers are listed below:

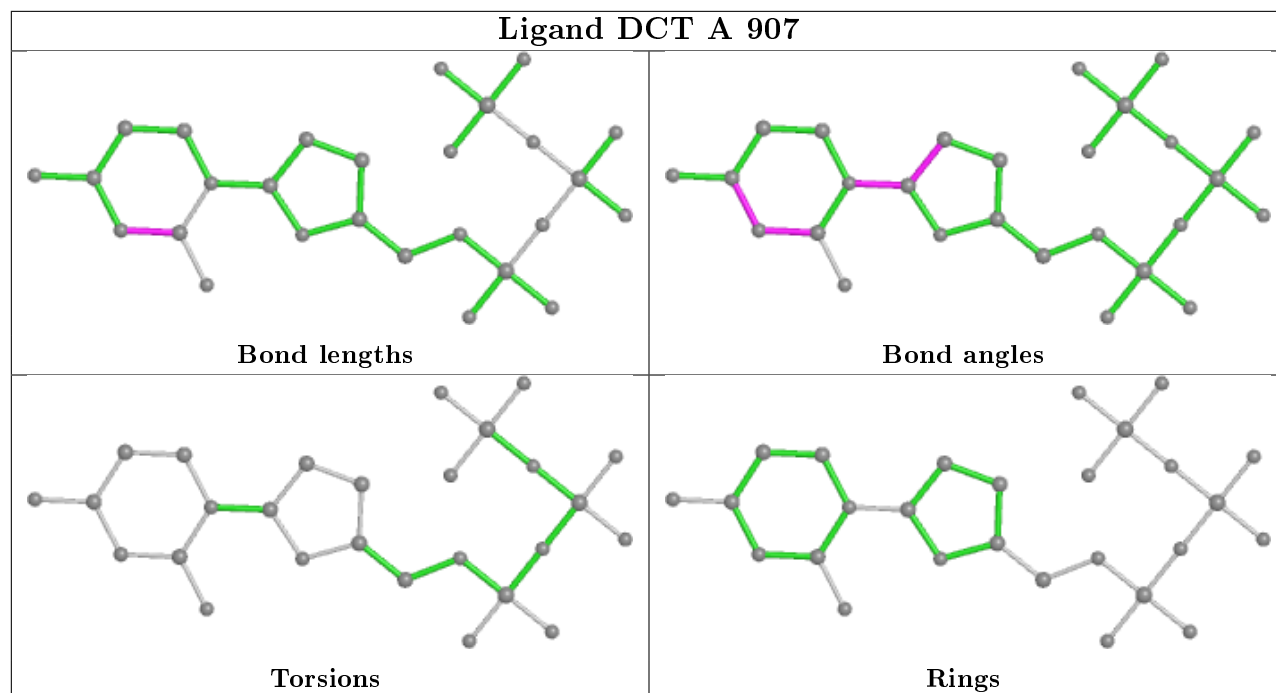
Mol	Chain	Res	Type	Atoms
7	A	908	EPE	C10-C9-N1-C2
7	A	908	EPE	C8-C7-N4-C5
7	A	908	EPE	C8-C7-N4-C3
7	A	908	EPE	C10-C9-N1-C6

There are no ring outliers.

2 monomers are involved in 2 short contacts:

Mol	Chain	Res	Type	Clashes	Symm-Clashes
8	A	909	ACT	1	0
7	A	908	EPE	1	0

The following is a two-dimensional graphical depiction of Mogul quality analysis of bond lengths, bond angles, torsion angles, and ring geometry for all instances of the Ligand of Interest. In addition, ligands with molecular weight > 250 and outliers as shown on the validation Tables will also be included. For torsion angles, if less than 5% of the Mogul distribution of torsion angles is within 10 degrees of the torsion angle in question, then that torsion angle is considered an outlier. Any bond that is central to one or more torsion angles identified as an outlier by Mogul will be highlighted in the graph. For rings, the root-mean-square deviation (RMSD) between the ring in question and similar rings identified by Mogul is calculated over all ring torsion angles. If the average RMSD is greater than 60 degrees and the minimal RMSD between the ring in question and any Mogul-identified rings is also greater than 60 degrees, then that ring is considered an outlier. The outliers are highlighted in purple. The color gray indicates Mogul did not find sufficient equivalents in the CSD to analyse the geometry.



## 5.7 Other polymers [i](#)

There are no such residues in this entry.

## 5.8 Polymer linkage issues [i](#)

There are no chain breaks in this entry.

## 6 Fit of model and data ⓘ

### 6.1 Protein, DNA and RNA chains ⓘ

In the following table, the column labelled ‘#RSRZ> 2’ contains the number (and percentage) of RSRZ outliers, followed by percent RSRZ outliers for the chain as percentile scores relative to all X-ray entries and entries of similar resolution. The OWAB column contains the minimum, median, 95<sup>th</sup> percentile and maximum values of the occupancy-weighted average B-factor per residue. The column labelled ‘Q< 0.9’ lists the number of (and percentage) of residues with an average occupancy less than 0.9.

Mol	Chain	Analysed	<RSRZ>	#RSRZ>2	OWAB(Å <sup>2</sup> )	Q<0.9
1	B	11/12 (91%)	-0.26	0 100 100	14, 19, 33, 33	0
2	C	14/16 (87%)	-0.37	0 100 100	15, 18, 32, 33	0
3	A	542/553 (98%)	-0.18	10 (1%) 68 72	13, 22, 38, 57	0
All	All	567/581 (97%)	-0.19	10 (1%) 68 72	13, 22, 38, 57	0

All (10) RSRZ outliers are listed below:

Mol	Chain	Res	Type	RSRZ
3	A	290	SER	5.0
3	A	736	ARG	3.0
3	A	556	ARG	2.6
3	A	291	PRO	2.6
3	A	329	GLY	2.3
3	A	421	GLU	2.1
3	A	648	GLY	2.1
3	A	647	PHE	2.1
3	A	649	VAL	2.0
3	A	653	ALA	2.0

### 6.2 Non-standard residues in protein, DNA, RNA chains ⓘ

In the following table, the Atoms column lists the number of modelled atoms in the group and the number defined in the chemical component dictionary. The B-factors column lists the minimum, median, 95<sup>th</sup> percentile and maximum values of B factors of atoms in the group. The column labelled ‘Q< 0.9’ lists the number of atoms with occupancy less than 0.9.

Mol	Type	Chain	Res	Atoms	RSCC	RSR	B-factors(Å <sup>2</sup> )	Q<0.9
1	DOC	B	112	18/19	0.98	0.11	13,14,16,17	0



## 6.3 Carbohydrates ⓘ

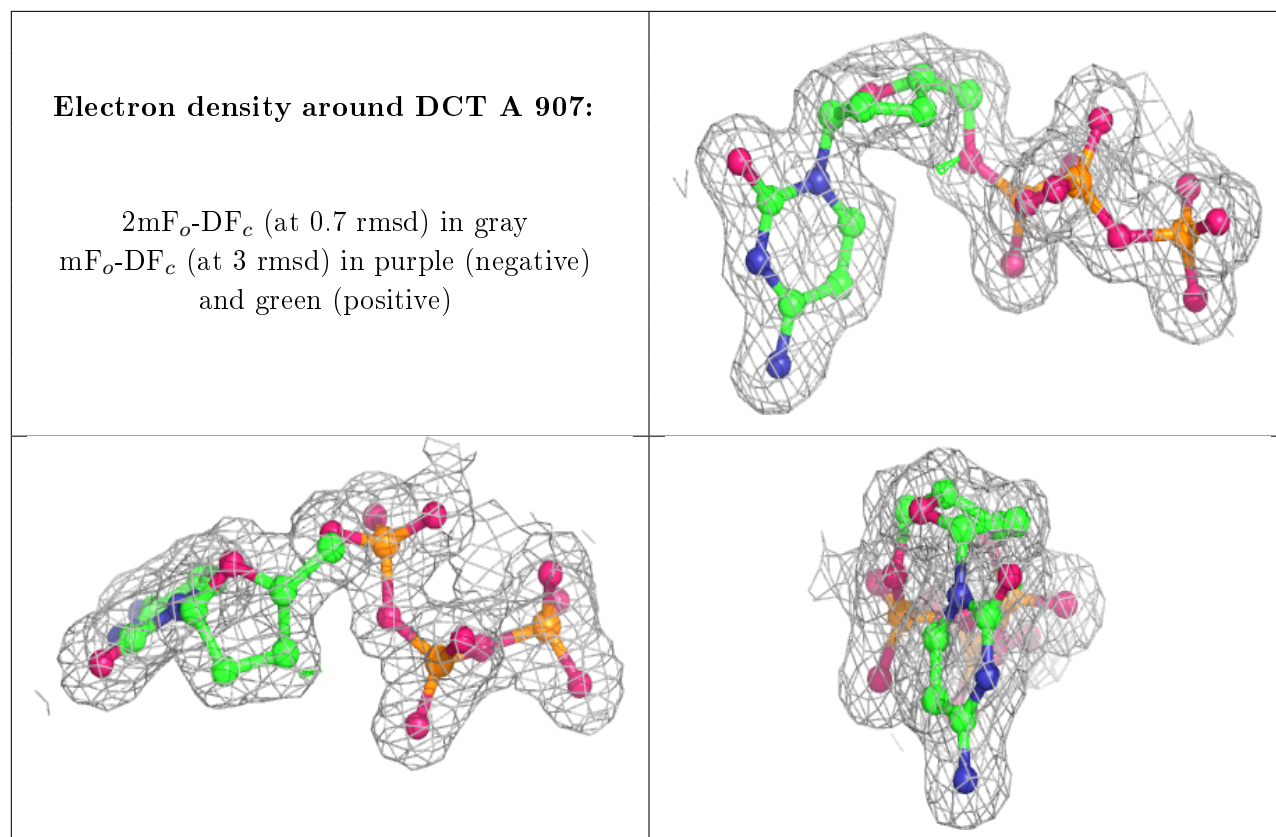
There are no carbohydrates in this entry.

## 6.4 Ligands ⓘ

In the following table, the Atoms column lists the number of modelled atoms in the group and the number defined in the chemical component dictionary. The B-factors column lists the minimum, median, 95<sup>th</sup> percentile and maximum values of B factors of atoms in the group. The column labelled 'Q< 0.9' lists the number of atoms with occupancy less than 0.9.

Mol	Type	Chain	Res	Atoms	RSCC	RSR	B-factors( $\text{\AA}^2$ )	Q<0.9
9	GOL	A	911	6/6	0.78	0.23	46,47,49,54	0
8	ACT	A	909	4/4	0.92	0.15	29,29,29,33	0
7	EPE	A	908	15/15	0.95	0.10	26,29,35,35	0
4	MN	A	905	1/1	0.96	0.06	35,35,35,35	1
8	ACT	A	910	4/4	0.98	0.05	23,24,24,26	0
4	MN	A	906	1/1	0.98	0.20	36,36,36,36	0
5	MG	A	901	1/1	0.99	0.09	16,16,16,16	0
6	DCT	A	907	27/27	0.99	0.08	14,14,16,16	0
4	MN	A	904	1/1	0.99	0.10	28,28,28,28	1
4	MN	B	201	1/1	0.99	0.03	22,22,22,22	1
4	MN	A	903	1/1	1.00	0.03	24,24,24,24	1
4	MN	A	902	1/1	1.00	0.04	15,15,15,15	0

The following is a graphical depiction of the model fit to experimental electron density of all instances of the Ligand of Interest. In addition, ligands with molecular weight > 250 and outliers as shown on the geometry validation Tables will also be included. Each fit is shown from different orientation to approximate a three-dimensional view.



## 6.5 Other polymers [i](#)

There are no such residues in this entry.