



# wwPDB X-ray Structure Validation Summary Report ⓘ

May 29, 2020 – 12:09 pm BST

PDB ID : 1N6F  
Title : tricorn protease in complex with Z-Phe-diketo-Arg-Glu-Phe  
Authors : Kim, J.-S.; Groll, M.; Huber, R.; Brandstetter, H.  
Deposited on : 2002-11-10  
Resolution : 2.70 Å(reported)

This is a wwPDB X-ray Structure Validation Summary Report for a publicly released PDB entry.

We welcome your comments at [validation@mail.wwpdb.org](mailto:validation@mail.wwpdb.org)

A user guide is available at

<https://www.wwpdb.org/validation/2017/XrayValidationReportHelp>

with specific help available everywhere you see the ⓘ symbol.

---

The following versions of software and data (see [references ⓘ](#)) were used in the production of this report:

MolProbity : 4.02b-467  
Mogul : 1.8.5 (274361), CSD as541be (2020)  
Xtriage (Phenix) : 1.13  
EDS : 2.11  
buster-report : 1.1.7 (2018)  
Percentile statistics : 20191225.v01 (using entries in the PDB archive December 25th 2019)  
Refmac : 5.8.0158  
CCP4 : 7.0.044 (Gargrove)  
Ideal geometry (proteins) : Engh & Huber (2001)  
Ideal geometry (DNA, RNA) : Parkinson et al. (1996)  
Validation Pipeline (wwPDB-VP) : 2.11

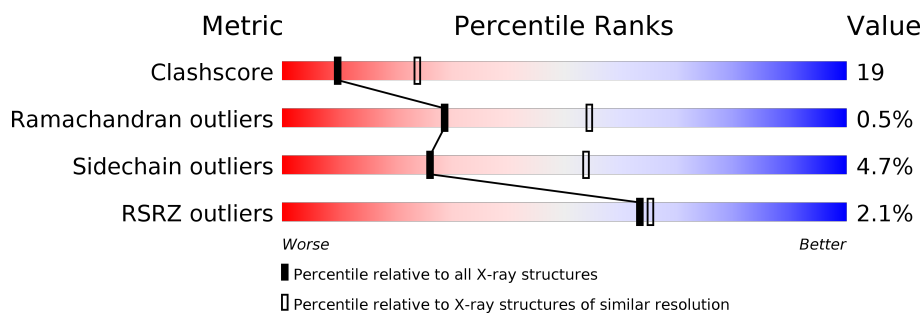
# 1 Overall quality at a glance

The following experimental techniques were used to determine the structure:

*X-RAY DIFFRACTION*

The reported resolution of this entry is 2.70 Å.

Percentile scores (ranging between 0-100) for global validation metrics of the entry are shown in the following graphic. The table shows the number of entries on which the scores are based.



Metric	Whole archive (#Entries)	Similar resolution (#Entries, resolution range(Å))
Clashscore	141614	3122 (2.70-2.70)
Ramachandran outliers	138981	3069 (2.70-2.70)
Sidechain outliers	138945	3069 (2.70-2.70)
RSRZ outliers	127900	2737 (2.70-2.70)

The table below summarises the geometric issues observed across the polymeric chains and their fit to the electron density. The red, orange, yellow and green segments on the lower bar indicate the fraction of residues that contain outliers for  $\geq 3$ , 2, 1 and 0 types of geometric quality criteria respectively. A grey segment represents the fraction of residues that are not modelled. The numeric value for each fraction is indicated below the corresponding segment, with a dot representing fractions  $\leq 5\%$ . The upper red bar (where present) indicates the fraction of residues that have poor fit to the electron density. The numeric value is given above the bar.

Mol	Chain	Length	Quality of chain
1	A	1071	<div> <div>%</div> <div> <div></div> <div>65%</div> <div>27%</div> <div>• •</div> </div> </div>
1	B	1071	<div> <div>%</div> <div> <div></div> <div>65%</div> <div>28%</div> <div>• •</div> </div> </div>
1	C	1071	<div> <div>4%</div> <div> <div></div> <div>59%</div> <div>33%</div> <div>• •</div> </div> </div>
1	D	1071	<div> <div>%</div> <div> <div></div> <div>62%</div> <div>30%</div> <div>• •</div> </div> </div>
1	E	1071	<div> <div>%</div> <div> <div></div> <div>64%</div> <div>29%</div> <div>• •</div> </div> </div>
1	F	1071	<div> <div>4%</div> <div> <div></div> <div>61%</div> <div>32%</div> <div>• •</div> </div> </div>

The following table lists non-polymeric compounds, carbohydrate monomers and non-standard

residues in protein, DNA, RNA chains that are outliers for geometric or electron-density-fit criteria:

Mol	Type	Chain	Res	Chirality	Geometry	Clashes	Electron density
2	DKT	A	1214	X	X	-	-
2	DKT	B	1214	X	X	-	-
2	DKT	C	1214	X	X	-	-
2	DKT	D	1214	X	X	-	-
2	DKT	E	1214	X	X	-	-
2	DKT	F	1214	X	X	-	-

## 2 Entry composition [i](#)

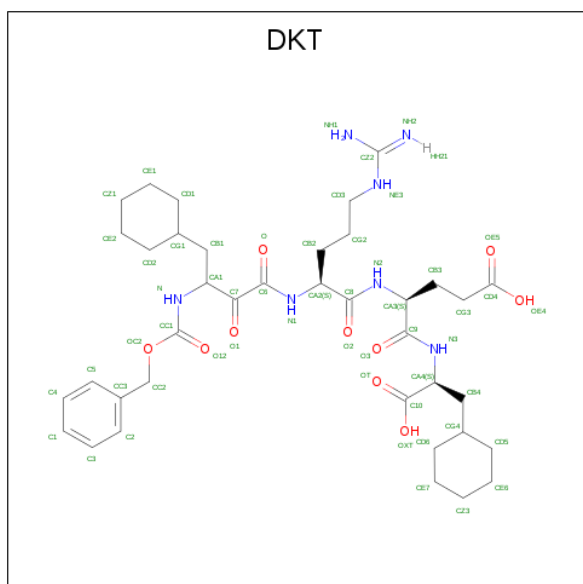
There are 3 unique types of molecules in this entry. The entry contains 50087 atoms, of which 0 are hydrogens and 0 are deuteriums.

In the tables below, the ZeroOcc column contains the number of atoms modelled with zero occupancy, the AltConf column contains the number of residues with at least one atom in alternate conformation and the Trace column contains the number of residues modelled with at most 2 atoms.

- Molecule 1 is a protein called tricorn protease.

Mol	Chain	Residues	Atoms					ZeroOcc	AltConf	Trace
1	A	1023	Total	C	N	O	S	94	0	0
			8177	5196	1402	1551	28			
1	B	1023	Total	C	N	O	S	94	0	0
			8176	5196	1402	1550	28			
1	C	1023	Total	C	N	O	S	94	0	0
			8176	5196	1402	1550	28			
1	D	1023	Total	C	N	O	S	94	0	0
			8176	5196	1402	1550	28			
1	E	1023	Total	C	N	O	S	94	0	0
			8177	5196	1402	1551	28			
1	F	1023	Total	C	N	O	S	94	0	0
			8176	5196	1402	1550	28			

- Molecule 2 is 4-[2-(3-BENZYLOXYCARBONYLAMINO-4-CYCLOHEXYL-1-HYDROXY-2-OXO-BUTYLAMINO)-5-GUANIDINO-PENTANOYLAMINO]-4-(1-CARBOXY-2-CYCLOHEXYL-ETHYLCARBAMOYL)-BUTYRIC ACID (three-letter code: DKT) (formula:  $C_{38}H_{57}N_7O_{10}$ ).



Mol	Chain	Residues	Atoms				ZeroOcc	AltConf
2	A	1	Total	C	N	O	0	0
			55	38	7	10		
2	B	1	Total	C	N	O	0	0
			55	38	7	10		
2	C	1	Total	C	N	O	0	0
			55	38	7	10		
2	D	1	Total	C	N	O	0	0
			55	38	7	10		
2	E	1	Total	C	N	O	0	0
			55	38	7	10		
2	F	1	Total	C	N	O	0	0
			55	38	7	10		

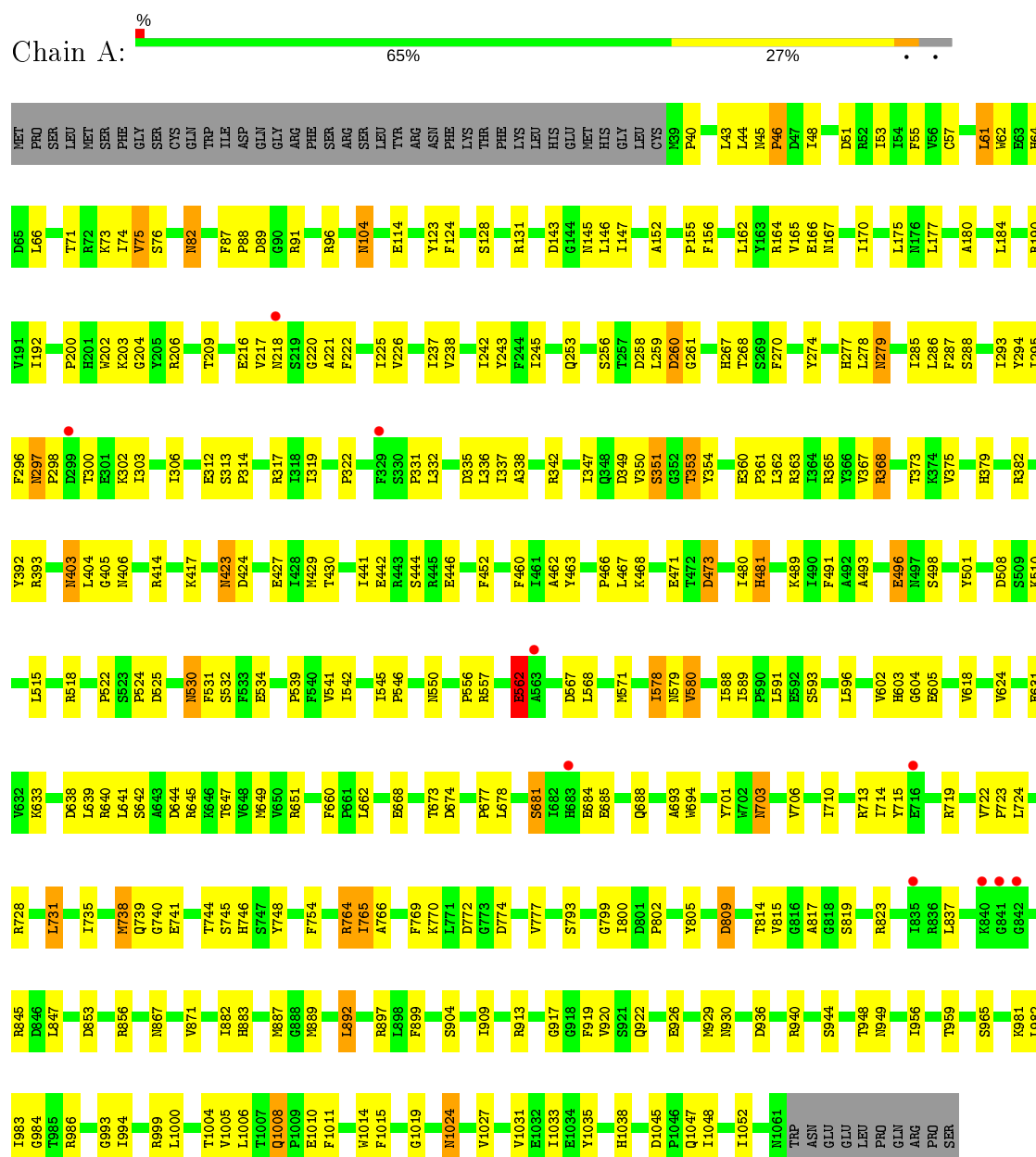
- Molecule 3 is water.

Mol	Chain	Residues	Atoms		ZeroOcc	AltConf
3	A	114	Total	O	0	0
			114	114		
3	B	108	Total	O	0	0
			108	108		
3	C	136	Total	O	0	0
			136	136		
3	D	132	Total	O	0	0
			132	132		
3	E	105	Total	O	0	0
			105	105		
3	F	104	Total	O	0	0
			104	104		

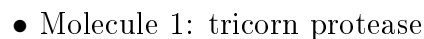
### 3 Residue-property plots

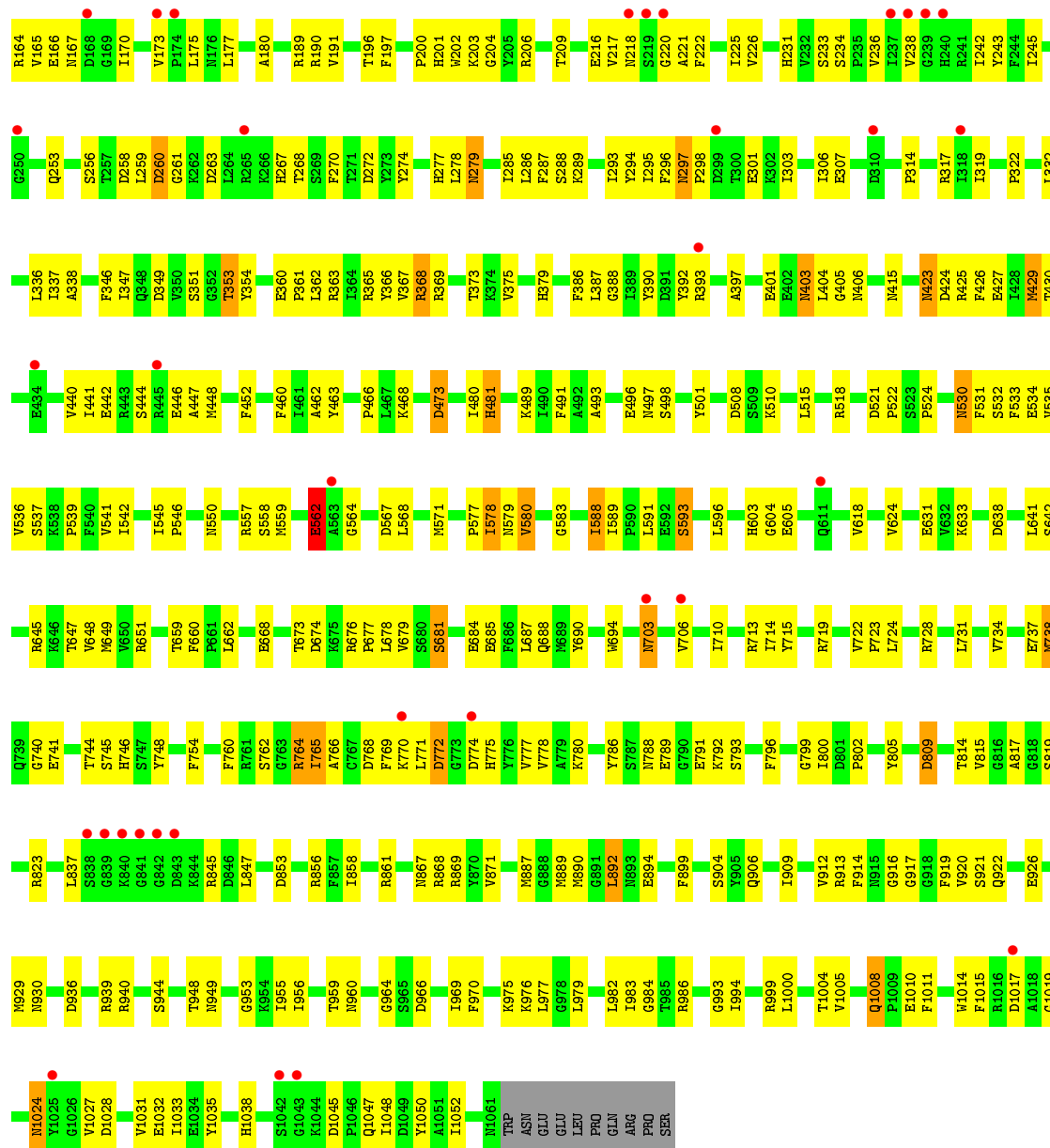
These plots are drawn for all protein, RNA and DNA chains in the entry. The first graphic for a chain summarises the proportions of the various outlier classes displayed in the second graphic. The second graphic shows the sequence view annotated by issues in geometry and electron density. Residues are color-coded according to the number of geometric quality criteria for which they contain at least one outlier: green = 0, yellow = 1, orange = 2 and red = 3 or more. A red dot above a residue indicates a poor fit to the electron density ( $RSRZ > 2$ ). Stretches of 2 or more consecutive residues without any outlier are shown as a green connector. Residues present in the sample, but not in the model, are shown in grey.

- Molecule 1: tricorn protease

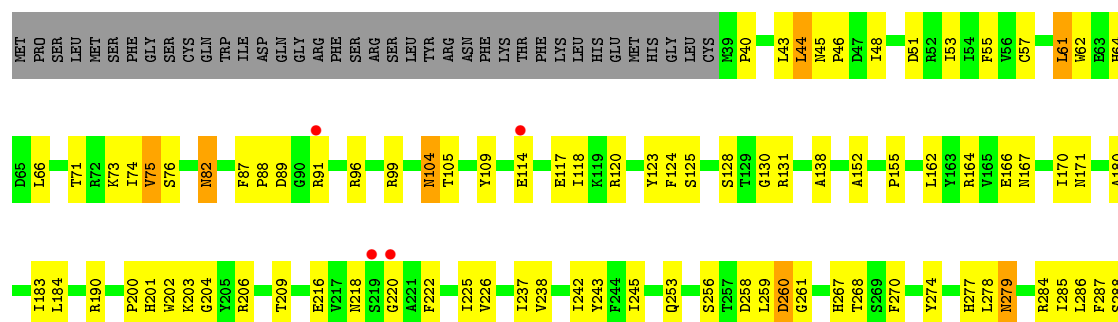


- Molecule 1: tricorn protease

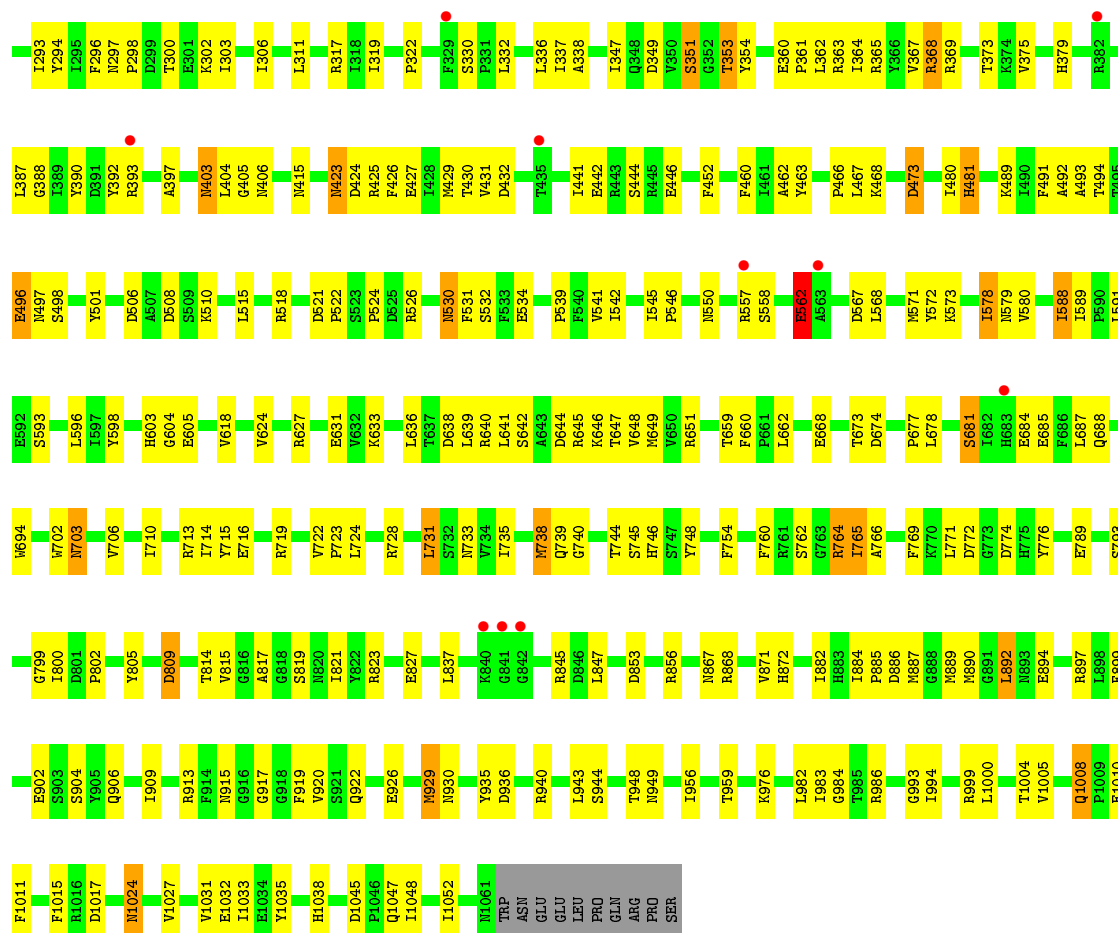




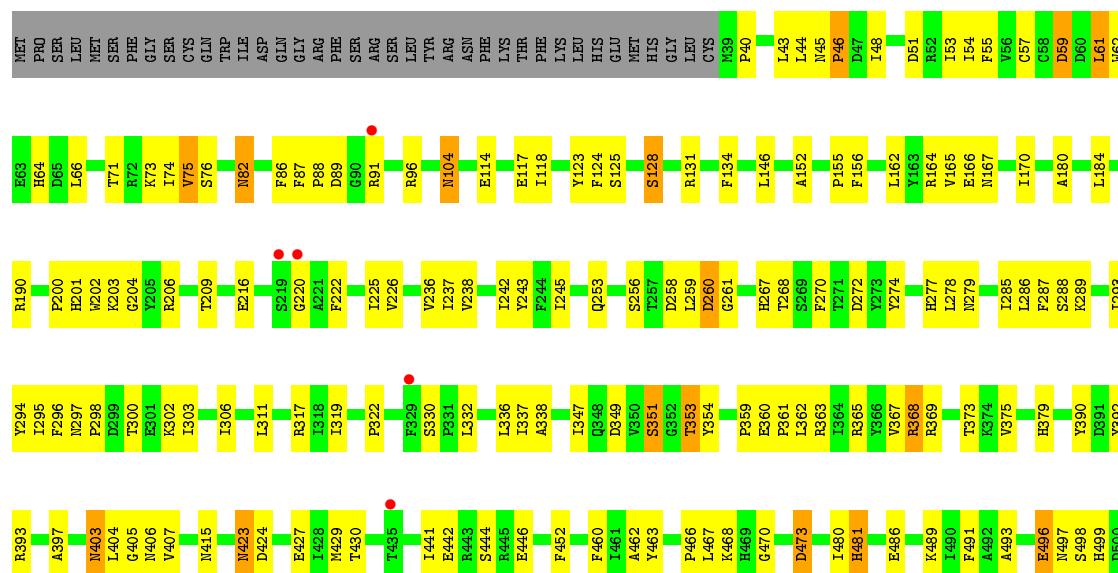
• Molecule 1: tricorn protease

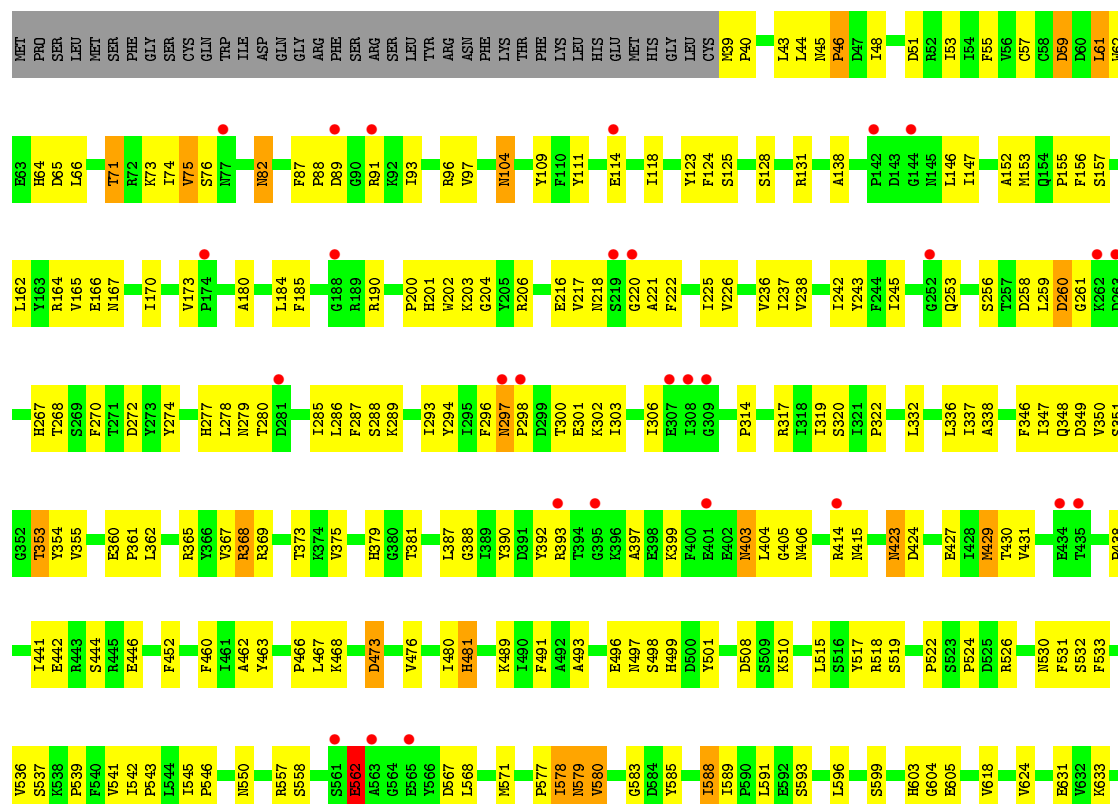


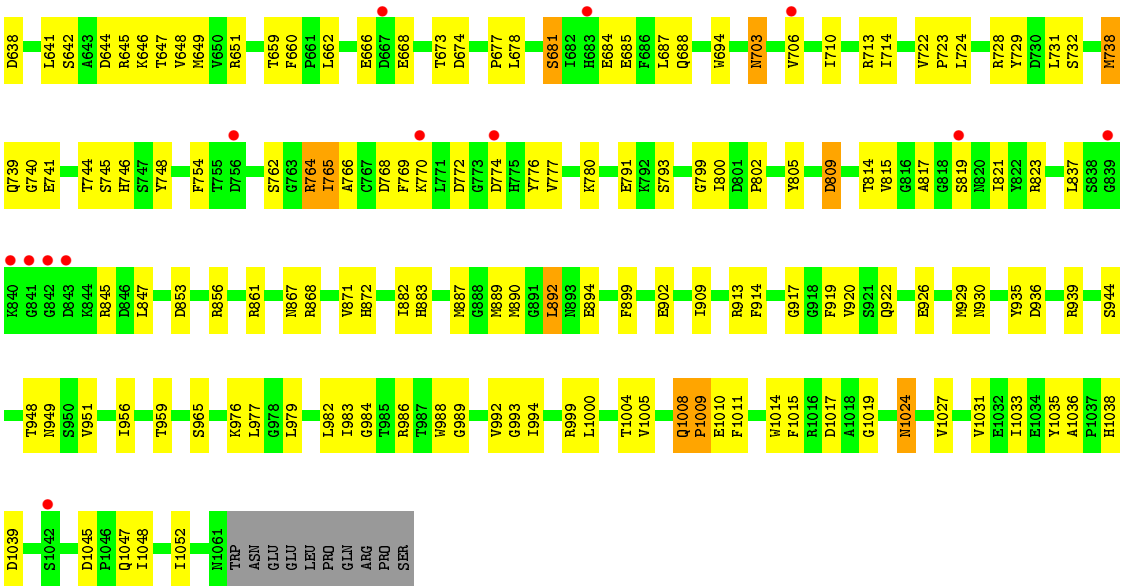




• Molecule 1: tricorn protease







## 4 Data and refinement statistics

Property	Value	Source
Space group	P 1 21 1	Depositor
Cell constants a, b, c, $\alpha$ , $\beta$ , $\gamma$	95.67Å 244.55Å 158.32Å 90.00° 104.59° 90.00°	Depositor
Resolution (Å)	6.00 – 2.70 19.99 – 2.70	Depositor EDS
% Data completeness (in resolution range)	85.8 (6.00-2.70) 86.0 (19.99-2.70)	Depositor EDS
$R_{merge}$	(Not available)	Depositor
$R_{sym}$	0.07	Depositor
$\langle I/\sigma(I) \rangle$ <sup>1</sup>	2.36 (at 2.71Å)	Xtriage
Refinement program	CNS	Depositor
R, $R_{free}$	0.247 , 0.280 0.248 , (Not available)	Depositor DCC
$R_{free}$ test set	No test flags present.	wwPDB-VP
Wilson B-factor (Å <sup>2</sup> )	35.8	Xtriage
Anisotropy	0.682	Xtriage
Bulk solvent $k_{sol}$ (e/Å <sup>3</sup> ), $B_{sol}$ (Å <sup>2</sup> )	0.31 , 45.2	EDS
L-test for twinning <sup>2</sup>	$\langle  L  \rangle = 0.48$ , $\langle L^2 \rangle = 0.31$	Xtriage
Estimated twinning fraction	0.054 for h,-k,-h-l	Xtriage
$F_o, F_c$ correlation	0.89	EDS
Total number of atoms	50087	wwPDB-VP
Average B, all atoms (Å <sup>2</sup> )	38.0	wwPDB-VP

Xtriage's analysis on translational NCS is as follows: *The largest off-origin peak in the Patterson function is 13.69% of the height of the origin peak. No significant pseudotranslation is detected.*

<sup>1</sup>Intensities estimated from amplitudes.

<sup>2</sup>Theoretical values of  $\langle |L| \rangle$ ,  $\langle L^2 \rangle$  for acentric reflections are 0.5, 0.333 respectively for untwinned datasets, and 0.375, 0.2 for perfectly twinned datasets.

## 5 Model quality [i](#)

### 5.1 Standard geometry [i](#)

Bond lengths and bond angles in the following residue types are not validated in this section: DKT

The Z score for a bond length (or angle) is the number of standard deviations the observed value is removed from the expected value. A bond length (or angle) with  $|Z| > 5$  is considered an outlier worth inspection. RMSZ is the root-mean-square of all Z scores of the bond lengths (or angles).

Mol	Chain	Bond lengths		Bond angles	
		RMSZ	# Z  >5	RMSZ	# Z  >5
1	A	0.52	0/8367	0.65	0/11311
1	B	0.53	0/8366	0.66	0/11310
1	C	0.54	0/8366	0.66	0/11310
1	D	0.51	0/8366	0.65	0/11310
1	E	0.52	0/8367	0.66	0/11311
1	F	0.52	0/8366	0.65	0/11310
All	All	0.53	0/50198	0.66	0/67862

There are no bond length outliers.

There are no bond angle outliers.

There are no chirality outliers.

There are no planarity outliers.

### 5.2 Too-close contacts [i](#)

In the following table, the Non-H and H(model) columns list the number of non-hydrogen atoms and hydrogen atoms in the chain respectively. The H(added) column lists the number of hydrogen atoms added and optimized by MolProbity. The Clashes column lists the number of clashes within the asymmetric unit, whereas Symm-Clashes lists symmetry related clashes.

Mol	Chain	Non-H	H(model)	H(added)	Clashes	Symm-Clashes
1	A	8177	0	8003	290	0
1	B	8176	0	8000	286	0
1	C	8176	0	8000	381	0
1	D	8176	0	8000	315	0
1	E	8177	0	8003	296	0
1	F	8176	0	8000	346	0
2	A	55	0	46	16	0

*Continued on next page...*

*Continued from previous page...*

Mol	Chain	Non-H	H(model)	H(added)	Clashes	Symm-Clashes
2	B	55	0	46	5	0
2	C	55	0	46	6	0
2	D	55	0	46	6	0
2	E	55	0	46	13	0
2	F	55	0	46	7	0
3	A	114	0	0	36	0
3	B	108	0	0	38	0
3	C	136	0	0	93	0
3	D	132	0	0	53	0
3	E	105	0	0	24	0
3	F	104	0	0	82	0
All	All	50087	0	48282	1824	0

The all-atom clashscore is defined as the number of clashes found per 1000 atoms (including hydrogen atoms). The all-atom clashscore for this structure is 19.

The worst 5 of 1824 close contacts within the same asymmetric unit are listed below, sorted by their clash magnitude.

Atom-1	Atom-2	Interatomic distance (Å)	Clash overlap (Å)
1:A:965:SER:HB3	2:A:1214:DKT:C7	1.23	1.62
1:E:965:SER:HB3	2:E:1214:DKT:C7	1.52	1.36
1:D:171:ASN:HB3	3:D:1215:HOH:O	1.25	1.28
1:F:476:VAL:HG13	3:F:1283:HOH:O	1.41	1.20
2:A:1214:DKT:HE61	3:A:1276:HOH:O	1.51	1.08

There are no symmetry-related clashes.

## 5.3 Torsion angles ⓘ

### 5.3.1 Protein backbone ⓘ

In the following table, the Percentiles column shows the percent Ramachandran outliers of the chain as a percentile score with respect to all X-ray entries followed by that with respect to entries of similar resolution.

The Analysed column shows the number of residues for which the backbone conformation was analysed, and the total number of residues.

Mol	Chain	Analysed	Favoured	Allowed	Outliers	Percentiles
1	A	1021/1071 (95%)	950 (93%)	66 (6%)	5 (0%)	29 54

*Continued on next page...*

*Continued from previous page...*

Mol	Chain	Analysed	Favoured	Allowed	Outliers	Percentiles	
1	B	1021/1071 (95%)	948 (93%)	68 (7%)	5 (0%)	29	54
1	C	1021/1071 (95%)	947 (93%)	69 (7%)	5 (0%)	29	54
1	D	1021/1071 (95%)	955 (94%)	61 (6%)	5 (0%)	29	54
1	E	1021/1071 (95%)	951 (93%)	65 (6%)	5 (0%)	29	54
1	F	1021/1071 (95%)	946 (93%)	69 (7%)	6 (1%)	25	50
All	All	6126/6426 (95%)	5697 (93%)	398 (6%)	31 (0%)	29	54

5 of 31 Ramachandran outliers are listed below:

Mol	Chain	Res	Type
1	A	579	ASN
1	B	579	ASN
1	C	579	ASN
1	D	579	ASN
1	E	579	ASN

### 5.3.2 Protein sidechains ⓘ

In the following table, the Percentiles column shows the percent sidechain outliers of the chain as a percentile score with respect to all X-ray entries followed by that with respect to entries of similar resolution.

The Analysed column shows the number of residues for which the sidechain conformation was analysed, and the total number of residues.

Mol	Chain	Analysed	Rotameric	Outliers	Percentiles	
1	A	883/928 (95%)	842 (95%)	41 (5%)	27	54
1	B	882/928 (95%)	841 (95%)	41 (5%)	27	54
1	C	882/928 (95%)	840 (95%)	42 (5%)	25	53
1	D	882/928 (95%)	841 (95%)	41 (5%)	27	54
1	E	883/928 (95%)	839 (95%)	44 (5%)	24	51
1	F	882/928 (95%)	841 (95%)	41 (5%)	27	54
All	All	5294/5568 (95%)	5044 (95%)	250 (5%)	26	54

5 of 250 residues with a non-rotameric sidechain are listed below:

Mol	Chain	Res	Type
1	C	765	ILE

*Continued on next page...*

*Continued from previous page...*

Mol	Chain	Res	Type
1	D	415	ASN
1	F	578	ILE
1	C	847	LEU
1	D	75	VAL

Some sidechains can be flipped to improve hydrogen bonding and reduce clashes. 5 of 187 such sidechains are listed below:

Mol	Chain	Res	Type
1	C	930	ASN
1	D	481	HIS
1	F	530	ASN
1	C	1024	ASN
1	D	195	ASN

### 5.3.3 RNA [i](#)

There are no RNA molecules in this entry.

## 5.4 Non-standard residues in protein, DNA, RNA chains [i](#)

There are no non-standard protein/DNA/RNA residues in this entry.

## 5.5 Carbohydrates [i](#)

There are no carbohydrates in this entry.

## 5.6 Ligand geometry [i](#)

6 ligands are modelled in this entry.

In the following table, the Counts columns list the number of bonds (or angles) for which Mogul statistics could be retrieved, the number of bonds (or angles) that are observed in the model and the number of bonds (or angles) that are defined in the Chemical Component Dictionary. The Link column lists molecule types, if any, to which the group is linked. The Z score for a bond length (or angle) is the number of standard deviations the observed value is removed from the expected value. A bond length (or angle) with  $|Z| > 2$  is considered an outlier worth inspection. RMSZ is the root-mean-square of all Z scores of the bond lengths (or angles).



Mol	Type	Chain	Res	Link	Bond lengths			Bond angles		
					Counts	RMSZ	# Z  > 2	Counts	RMSZ	# Z  > 2
2	DKT	B	1214	1	50,57,57	3.71	28 (56%)	60,74,74	6.05	38 (63%)
2	DKT	F	1214	1	50,57,57	3.71	28 (56%)	60,74,74	6.05	38 (63%)
2	DKT	D	1214	1	50,57,57	3.70	28 (56%)	60,74,74	6.05	38 (63%)
2	DKT	A	1214	1	50,57,57	3.71	28 (56%)	60,74,74	6.05	38 (63%)
2	DKT	C	1214	1	50,57,57	3.70	28 (56%)	60,74,74	6.05	38 (63%)
2	DKT	E	1214	1	50,57,57	3.70	28 (56%)	60,74,74	6.05	38 (63%)

In the following table, the Chirals column lists the number of chiral outliers, the number of chiral centers analysed, the number of these observed in the model and the number defined in the Chemical Component Dictionary. Similar counts are reported in the Torsion and Rings columns. '-' means no outliers of that kind were identified.

Mol	Type	Chain	Res	Link	Chirals	Torsions	Rings
2	DKT	B	1214	1	1/1/14/19	21/55/77/77	0/3/3/3
2	DKT	F	1214	1	1/1/14/19	21/55/77/77	0/3/3/3
2	DKT	D	1214	1	1/1/14/19	21/55/77/77	0/3/3/3
2	DKT	A	1214	1	1/1/14/19	21/55/77/77	0/3/3/3
2	DKT	C	1214	1	1/1/14/19	21/55/77/77	0/3/3/3
2	DKT	E	1214	1	1/1/14/19	21/55/77/77	0/3/3/3

The worst 5 of 168 bond length outliers are listed below:

Mol	Chain	Res	Type	Atoms	Z	Observed(Å)	Ideal(Å)
2	B	1214	DKT	C4-C5	7.93	1.55	1.38
2	D	1214	DKT	C4-C5	7.92	1.55	1.38
2	A	1214	DKT	C4-C5	7.89	1.55	1.38
2	E	1214	DKT	C4-C5	7.89	1.55	1.38
2	F	1214	DKT	C4-C5	7.87	1.55	1.38

The worst 5 of 228 bond angle outliers are listed below:

Mol	Chain	Res	Type	Atoms	Z	Observed(°)	Ideal(°)
2	A	1214	DKT	CG1-CB1-CA1	20.45	142.02	114.52
2	F	1214	DKT	CG1-CB1-CA1	20.44	142.00	114.52
2	B	1214	DKT	CG1-CB1-CA1	20.42	141.98	114.52
2	E	1214	DKT	CG1-CB1-CA1	20.42	141.98	114.52
2	D	1214	DKT	CG1-CB1-CA1	20.42	141.97	114.52

5 of 6 chirality outliers are listed below:

Mol	Chain	Res	Type	Atom
2	B	1214	DKT	CA1
2	F	1214	DKT	CA1
2	D	1214	DKT	CA1
2	A	1214	DKT	CA1
2	C	1214	DKT	CA1

5 of 126 torsion outliers are listed below:

Mol	Chain	Res	Type	Atoms
2	B	1214	DKT	N-CC1-OC2-CC2
2	B	1214	DKT	O12-CC1-OC2-CC2
2	B	1214	DKT	CC3-CC2-OC2-CC1
2	B	1214	DKT	N-CA1-CB1-CG1
2	B	1214	DKT	C6-C7-CA1-N

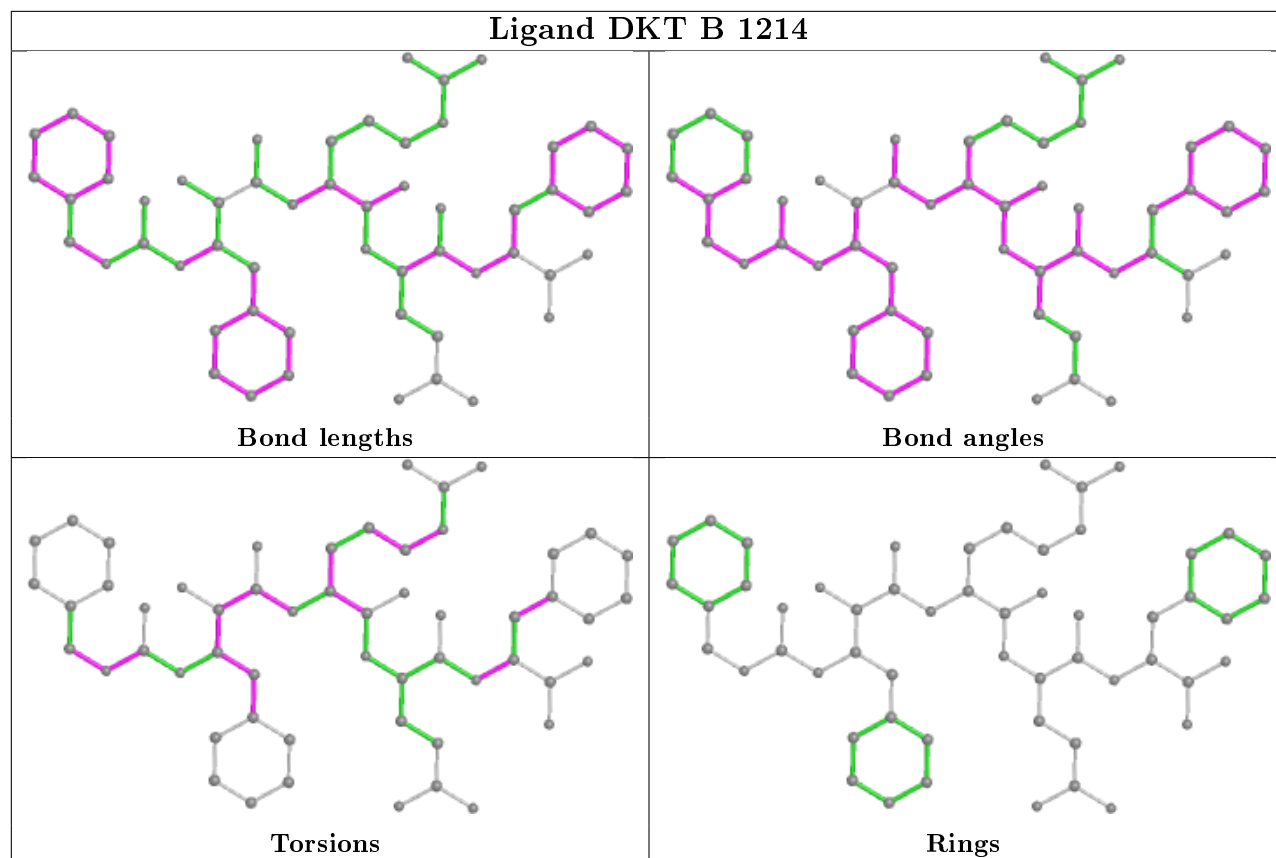
There are no ring outliers.

6 monomers are involved in 53 short contacts:

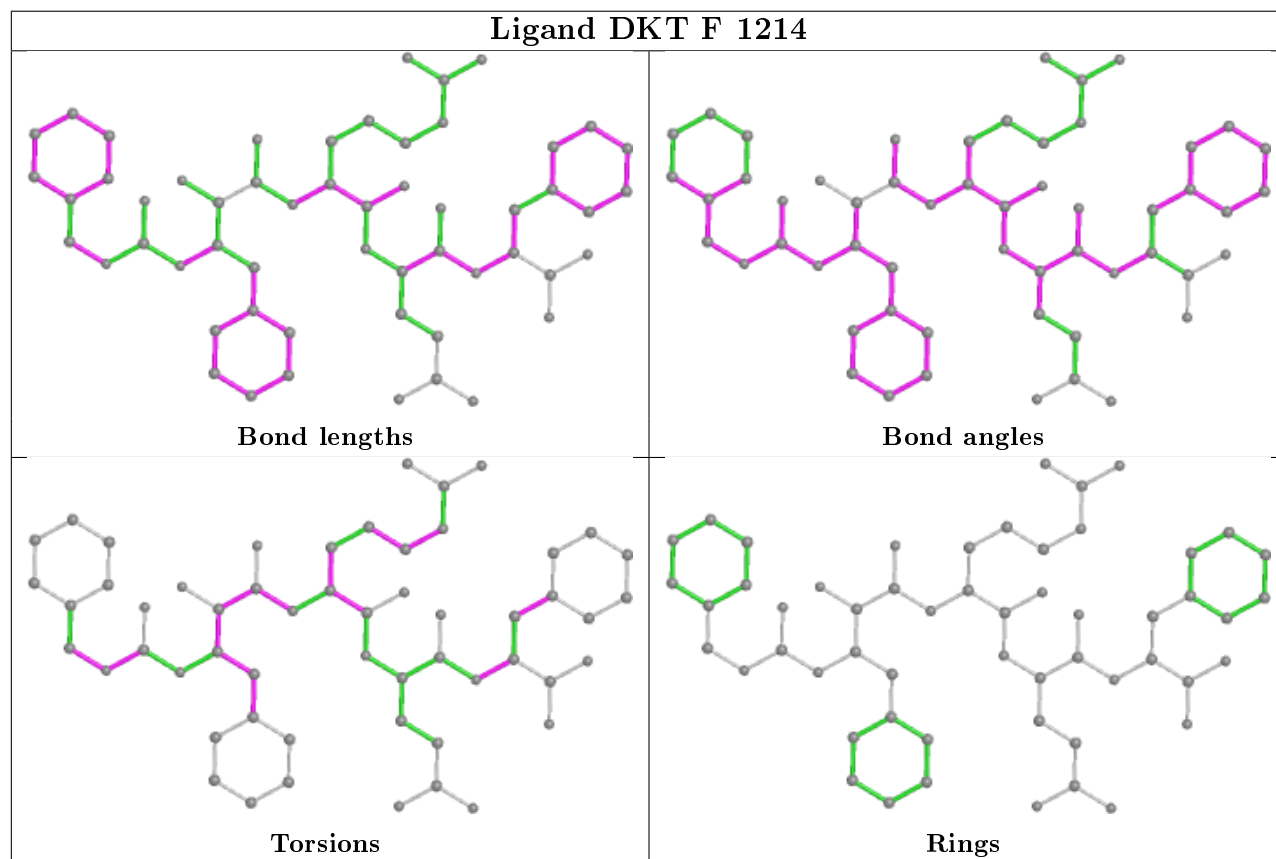
Mol	Chain	Res	Type	Clashes	Symm-Clashes
2	B	1214	DKT	5	0
2	F	1214	DKT	7	0
2	D	1214	DKT	6	0
2	A	1214	DKT	16	0
2	C	1214	DKT	6	0
2	E	1214	DKT	13	0

The following is a two-dimensional graphical depiction of Mogul quality analysis of bond lengths, bond angles, torsion angles, and ring geometry for all instances of the Ligand of Interest. In addition, ligands with molecular weight > 250 and outliers as shown on the validation Tables will also be included. For torsion angles, if less than 5% of the Mogul distribution of torsion angles is within 10 degrees of the torsion angle in question, then that torsion angle is considered an outlier. Any bond that is central to one or more torsion angles identified as an outlier by Mogul will be highlighted in the graph. For rings, the root-mean-square deviation (RMSD) between the ring in question and similar rings identified by Mogul is calculated over all ring torsion angles. If the average RMSD is greater than 60 degrees and the minimal RMSD between the ring in question and any Mogul-identified rings is also greater than 60 degrees, then that ring is considered an outlier. The outliers are highlighted in purple. The color gray indicates Mogul did not find sufficient equivalents in the CSD to analyse the geometry.

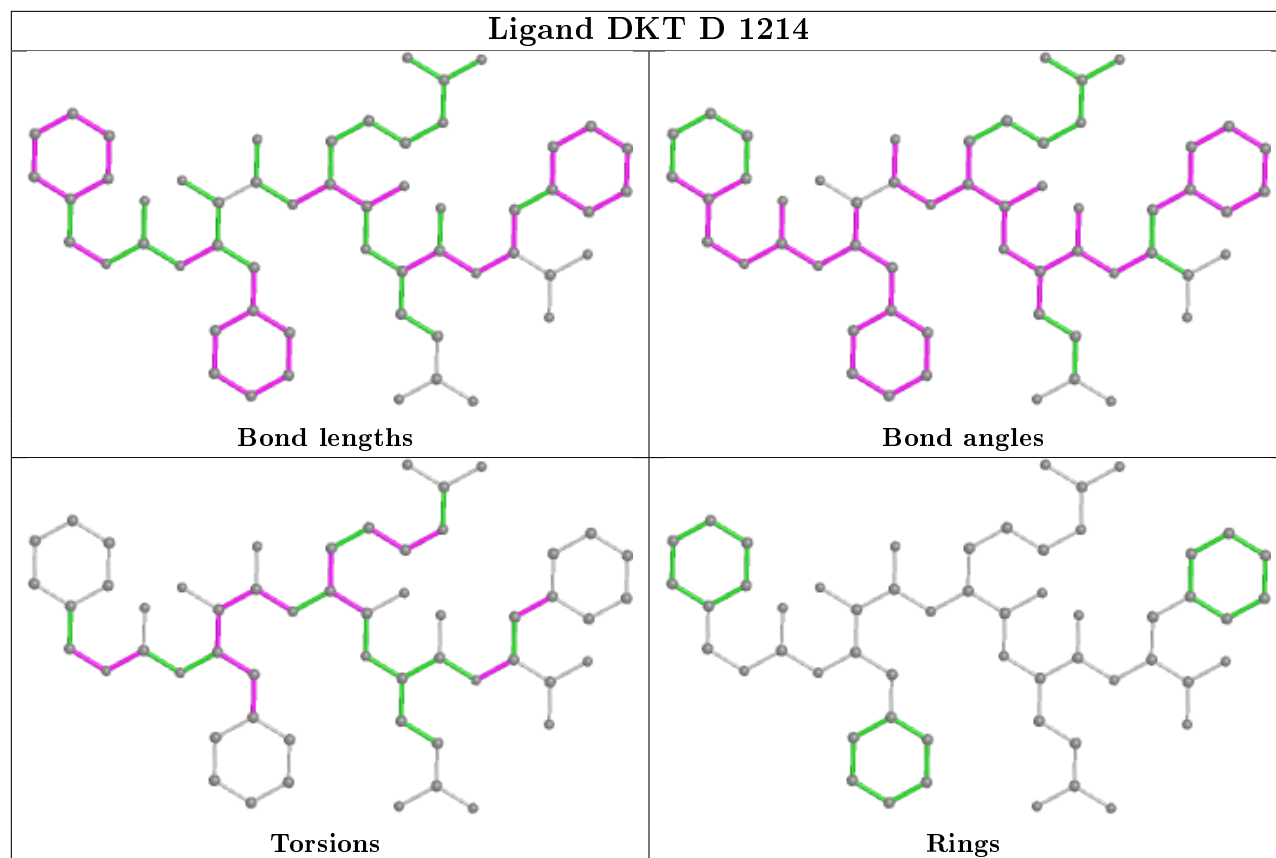
## Ligand DKT B 1214



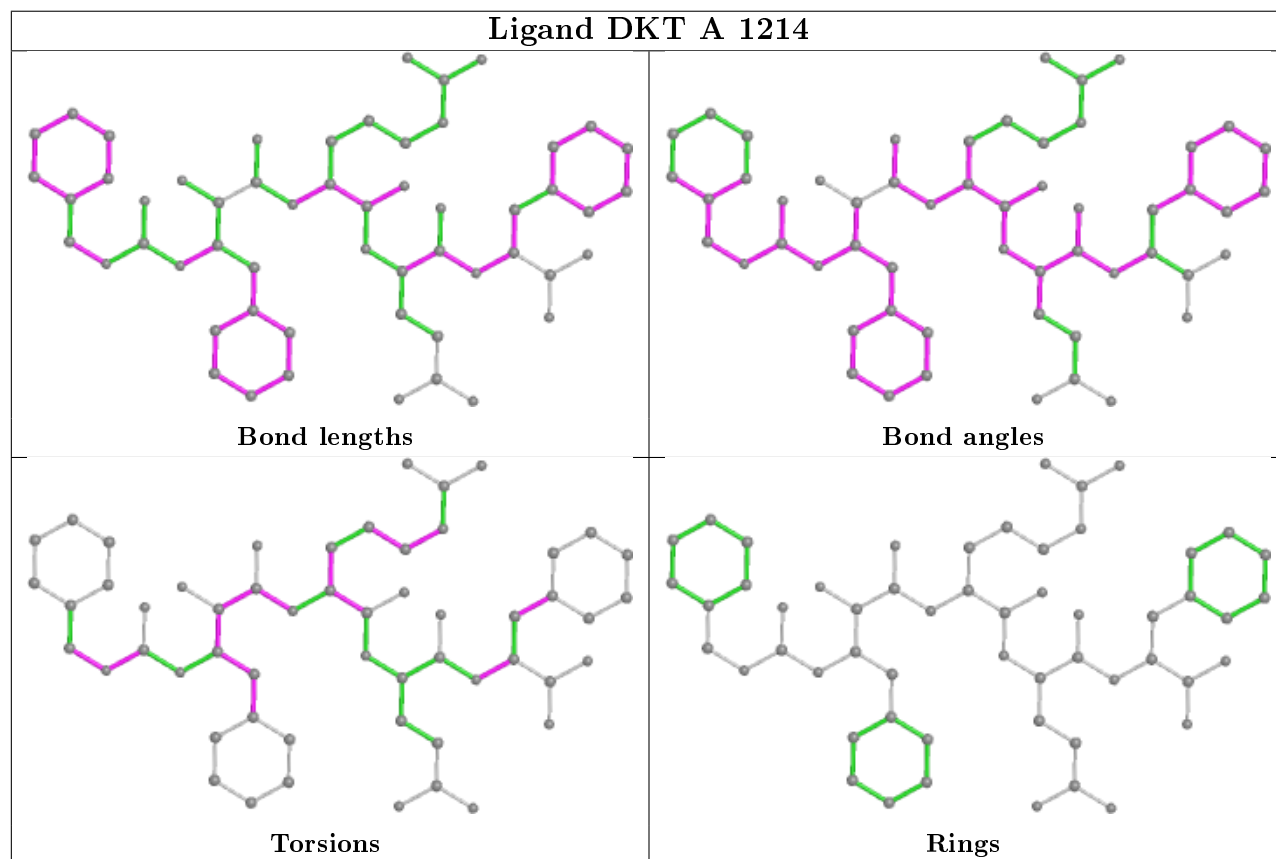
## Ligand DKT F 1214



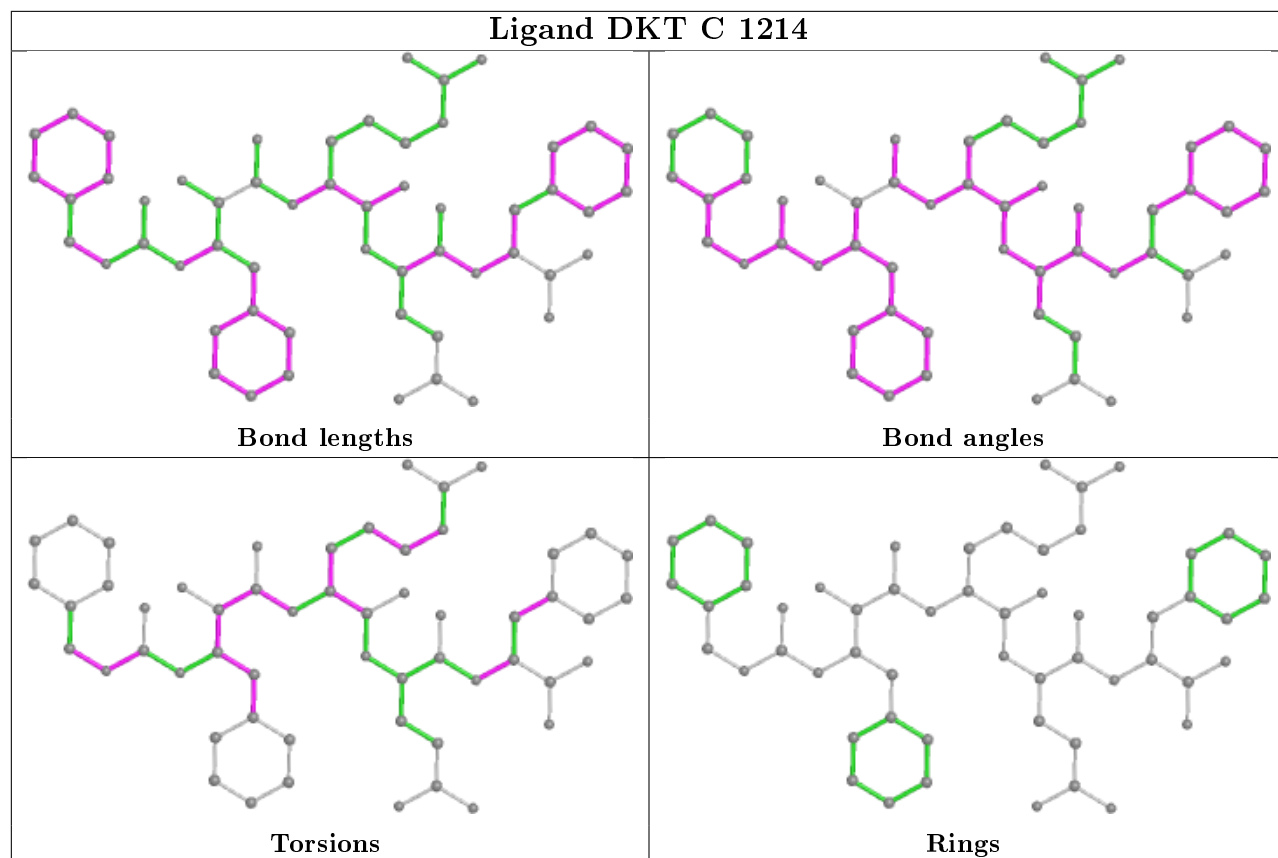
## Ligand DKT D 1214



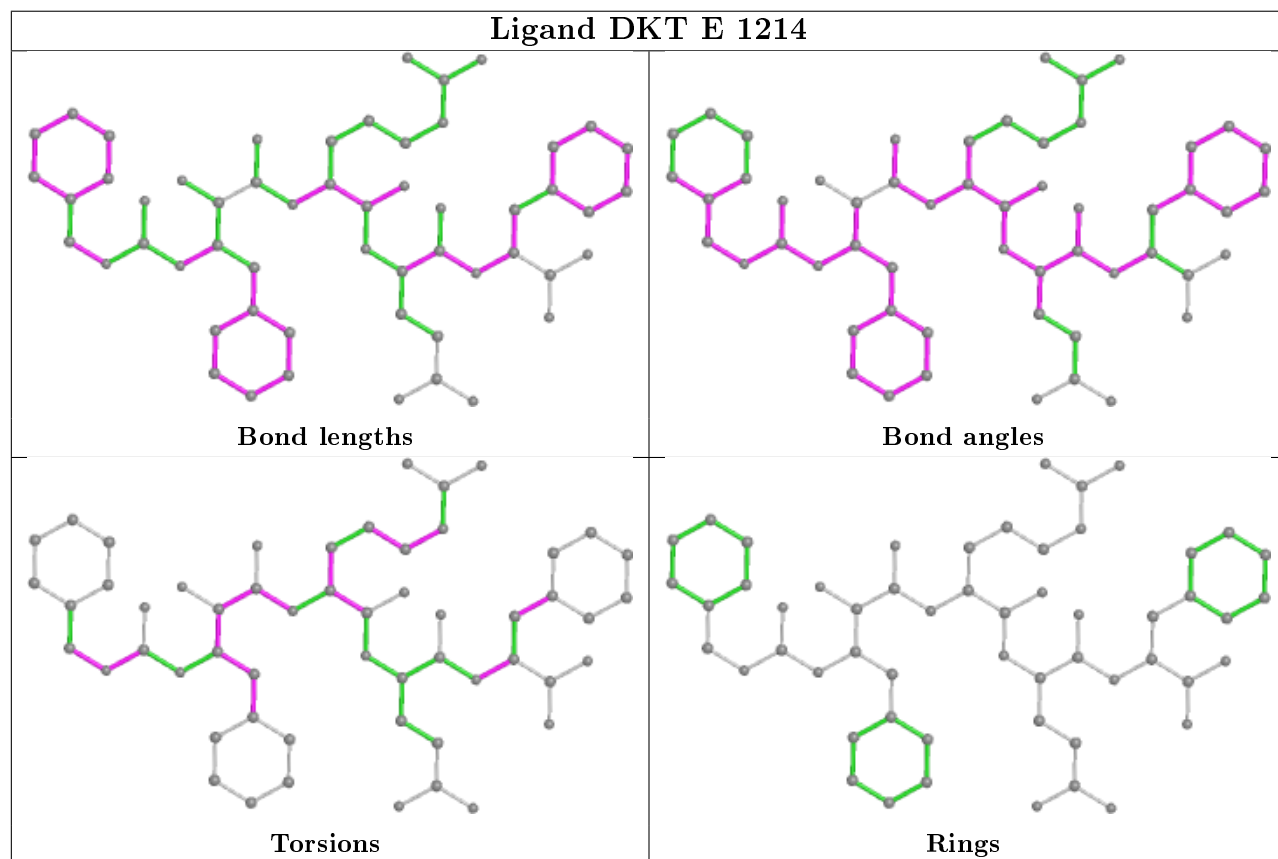
## Ligand DKT A 1214



## Ligand DKT C 1214



## Ligand DKT E 1214



## 5.7 Other polymers [i](#)

There are no such residues in this entry.

## 5.8 Polymer linkage issues [i](#)

There are no chain breaks in this entry.

## 6 Fit of model and data ⓘ

### 6.1 Protein, DNA and RNA chains ⓘ

In the following table, the column labelled ‘#RSRZ> 2’ contains the number (and percentage) of RSRZ outliers, followed by percent RSRZ outliers for the chain as percentile scores relative to all X-ray entries and entries of similar resolution. The OWAB column contains the minimum, median, 95<sup>th</sup> percentile and maximum values of the occupancy-weighted average B-factor per residue. The column labelled ‘Q< 0.9’ lists the number of (and percentage) of residues with an average occupancy less than 0.9.

Mol	Chain	Analysed	<RSRZ>	#RSRZ>2	OWAB(Å <sup>2</sup> )	Q<0.9
1	A	1023/1071 (95%)	-0.20	10 (0%) 82 83	14, 34, 58, 85	20 (1%)
1	B	1023/1071 (95%)	-0.20	11 (1%) 80 82	15, 35, 59, 85	20 (1%)
1	C	1023/1071 (95%)	0.17	43 (4%) 36 35	20, 39, 61, 85	20 (1%)
1	D	1023/1071 (95%)	-0.15	14 (1%) 75 77	16, 36, 60, 84	20 (1%)
1	E	1023/1071 (95%)	-0.18	12 (1%) 79 80	18, 35, 60, 83	20 (1%)
1	F	1023/1071 (95%)	0.09	41 (4%) 38 37	17, 39, 61, 85	20 (1%)
All	All	6138/6426 (95%)	-0.08	131 (2%) 63 65	14, 36, 60, 85	120 (1%)

The worst 5 of 131 RSRZ outliers are listed below:

Mol	Chain	Res	Type	RSRZ
1	E	219	SER	9.9
1	B	842	GLY	6.5
1	C	219	SER	6.2
1	D	563	ALA	5.9
1	F	219	SER	5.8

### 6.2 Non-standard residues in protein, DNA, RNA chains ⓘ

There are no non-standard protein/DNA/RNA residues in this entry.

### 6.3 Carbohydrates ⓘ

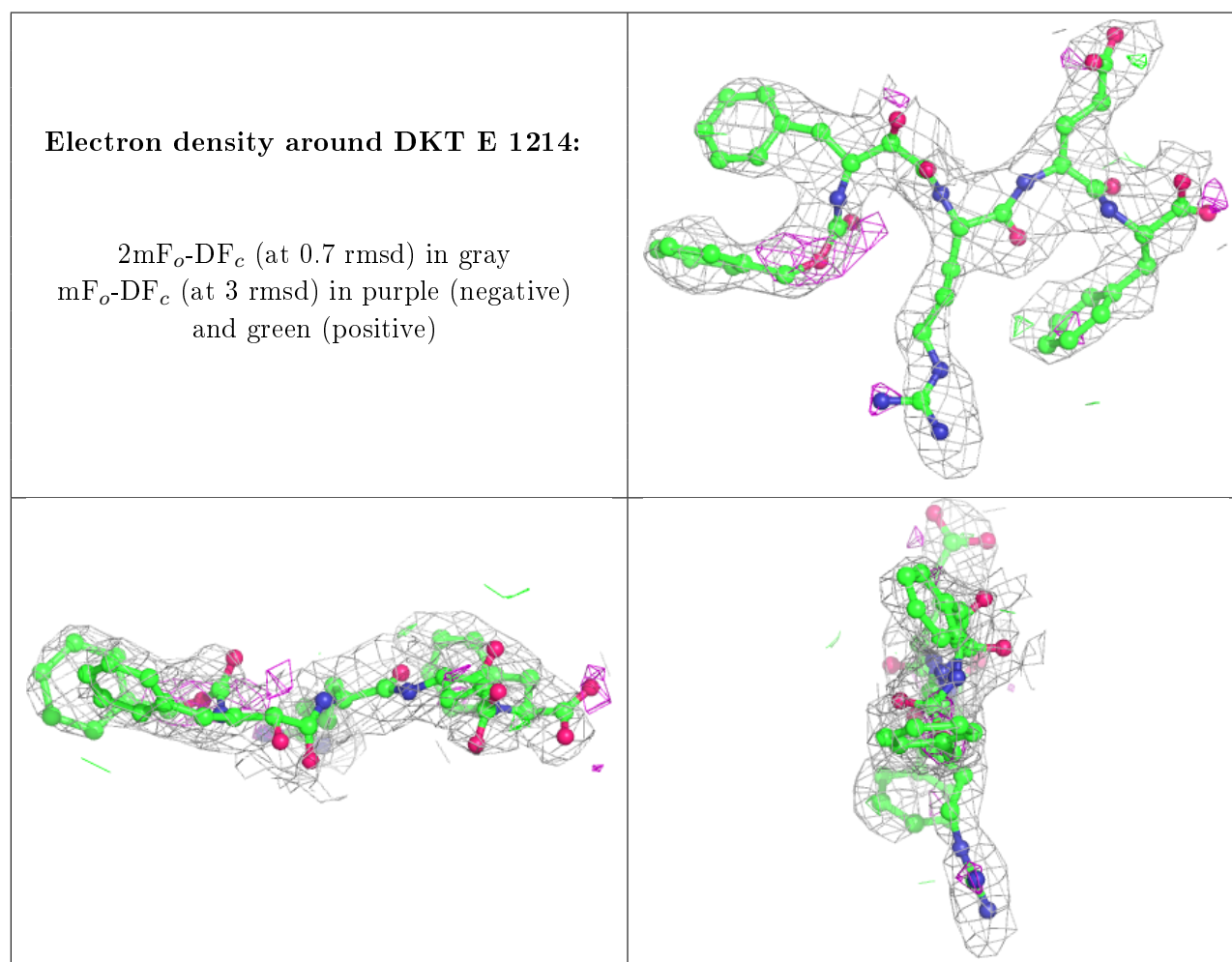
There are no carbohydrates in this entry.

## 6.4 Ligands [i](#)

In the following table, the Atoms column lists the number of modelled atoms in the group and the number defined in the chemical component dictionary. The B-factors column lists the minimum, median, 95<sup>th</sup> percentile and maximum values of B factors of atoms in the group. The column labelled 'Q<0.9' lists the number of atoms with occupancy less than 0.9.

Mol	Type	Chain	Res	Atoms	RSCC	RSR	B-factors( $\text{\AA}^2$ )	Q<0.9
2	DKT	E	1214	55/55	0.72	0.31	41,57,73,74	0
2	DKT	C	1214	55/55	0.75	0.35	41,57,73,74	0
2	DKT	B	1214	55/55	0.75	0.28	41,57,73,74	0
2	DKT	A	1214	55/55	0.76	0.29	41,57,73,74	0
2	DKT	F	1214	55/55	0.77	0.33	41,57,73,74	0
2	DKT	D	1214	55/55	0.78	0.29	41,57,73,74	0

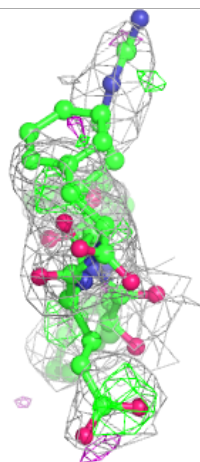
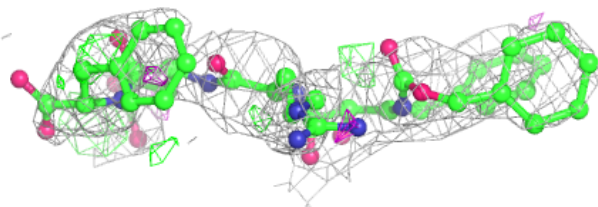
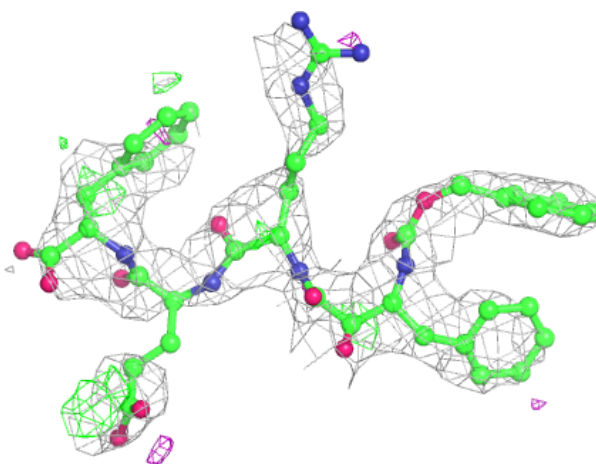
The following is a graphical depiction of the model fit to experimental electron density of all instances of the Ligand of Interest. In addition, ligands with molecular weight > 250 and outliers as shown on the geometry validation Tables will also be included. Each fit is shown from different orientation to approximate a three-dimensional view.





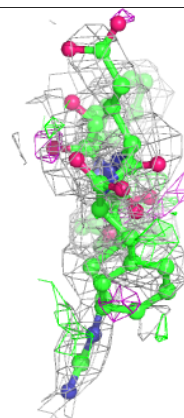
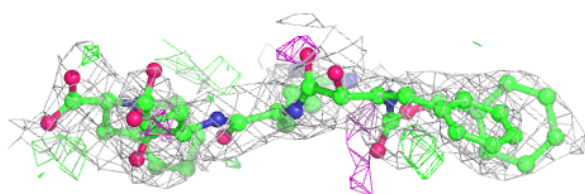
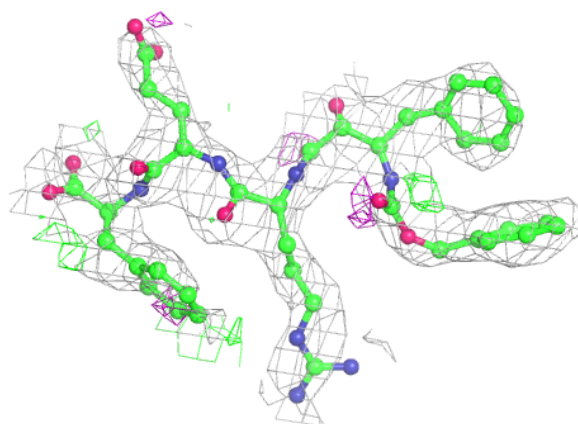
**Electron density around DKT C 1214:**

$2mF_o-DF_c$  (at 0.7 rmsd) in gray  
 $mF_o-DF_c$  (at 3 rmsd) in purple (negative)  
and green (positive)



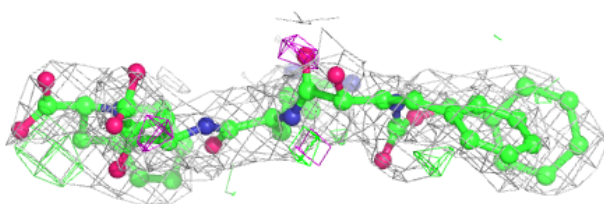
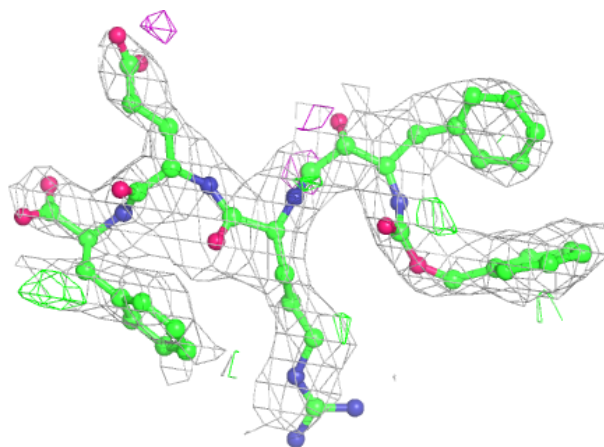
**Electron density around DKT B 1214:**

$2mF_o-DF_c$  (at 0.7 rmsd) in gray  
 $mF_o-DF_c$  (at 3 rmsd) in purple (negative)  
and green (positive)



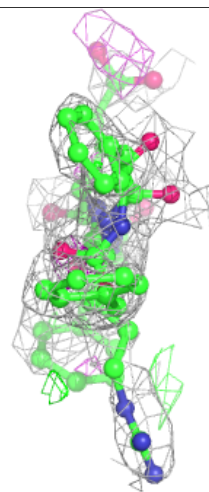
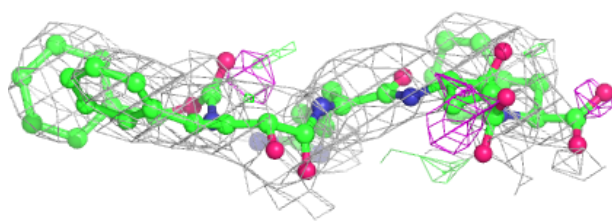
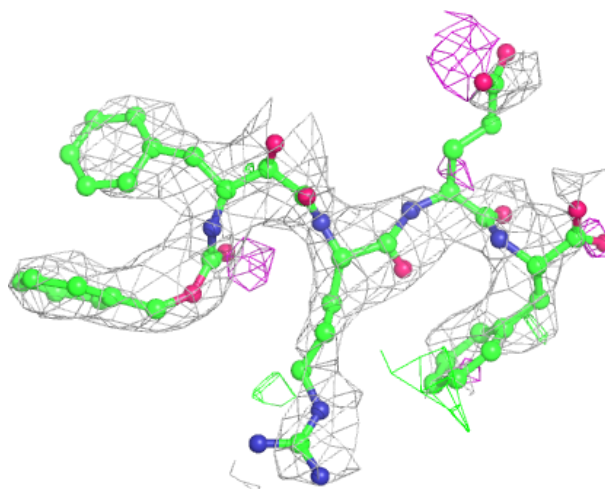
**Electron density around DKT A 1214:**

$2mF_o-DF_c$  (at 0.7 rmsd) in gray  
 $mF_o-DF_c$  (at 3 rmsd) in purple (negative)  
and green (positive)



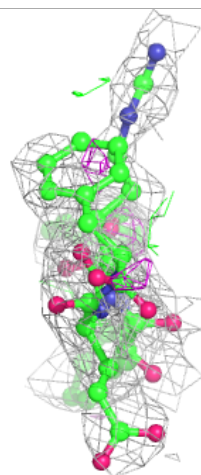
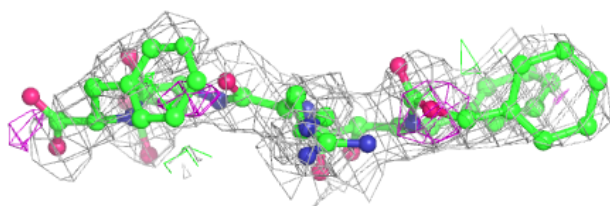
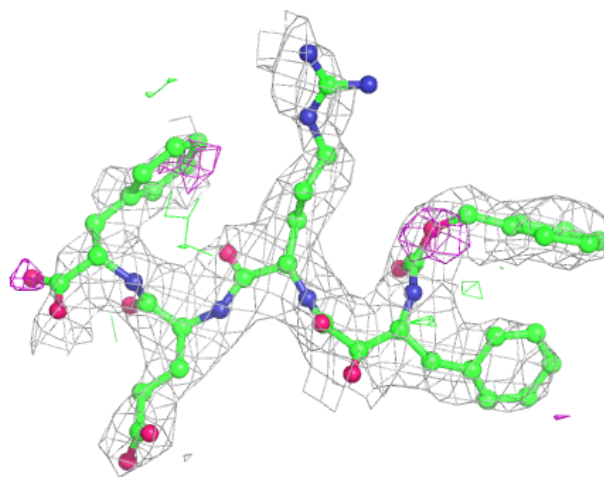
**Electron density around DKT F 1214:**

$2mF_o-DF_c$  (at 0.7 rmsd) in gray  
 $mF_o-DF_c$  (at 3 rmsd) in purple (negative)  
and green (positive)



**Electron density around DKT D 1214:**

$2mF_o-DF_c$  (at 0.7 rmsd) in gray  
 $mF_o-DF_c$  (at 3 rmsd) in purple (negative)  
and green (positive)



## 6.5 Other polymers [i](#)

There are no such residues in this entry.