



# Full wwPDB X-ray Structure Validation Report ⓘ

Jun 15, 2020 – 03:05 am BST

PDB ID : 3N6E  
Title : Structure of endothelial nitric oxide synthase N368D mutant heme domain complexed with 6,6'-(2,2'-(5-amino-1,3-phenylene)bis(ethane-2,1-diyl))bis(4-methylpyridin-2-amine)  
Authors : Delker, S.L.; Li, H.; Poulos, T.L.  
Deposited on : 2010-05-25  
Resolution : 2.20 Å(reported)

This is a Full wwPDB X-ray Structure Validation Report for a publicly released PDB entry.

We welcome your comments at [validation@mail.wwpdb.org](mailto:validation@mail.wwpdb.org)

A user guide is available at

<https://www.wwpdb.org/validation/2017/XrayValidationReportHelp>

with specific help available everywhere you see the ⓘ symbol.

---

The following versions of software and data (see [references ⓘ](#)) were used in the production of this report:

MolProbity : 4.02b-467  
Mogul : 1.8.5 (274361), CSD as541be (2020)  
Xtriage (Phenix) : 1.13  
EDS : 2.11  
buster-report : 1.1.7 (2018)  
Percentile statistics : 20191225.v01 (using entries in the PDB archive December 25th 2019)  
Refmac : 5.8.0158  
CCP4 : 7.0.044 (Gargrove)  
Ideal geometry (proteins) : Engh & Huber (2001)  
Ideal geometry (DNA, RNA) : Parkinson et al. (1996)  
Validation Pipeline (wwPDB-VP) : 2.11

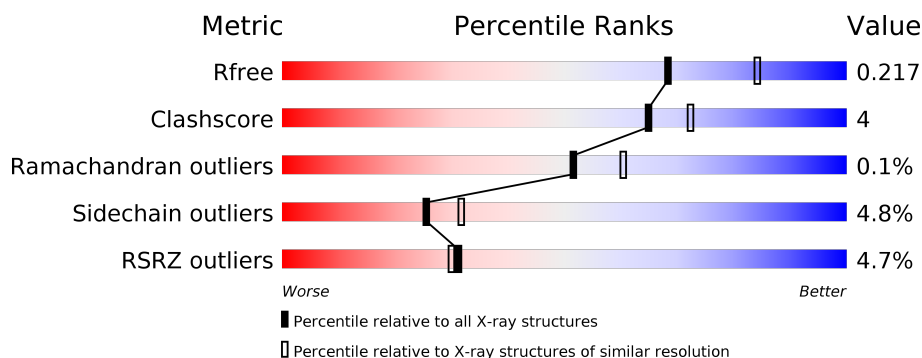
# 1 Overall quality at a glance ⓘ

The following experimental techniques were used to determine the structure:

## *X-RAY DIFFRACTION*

The reported resolution of this entry is 2.20 Å.

Percentile scores (ranging between 0-100) for global validation metrics of the entry are shown in the following graphic. The table shows the number of entries on which the scores are based.



Metric	Whole archive (#Entries)	Similar resolution (#Entries, resolution range(Å))
$R_{free}$	130704	4898 (2.20-2.20)
Clashscore	141614	5594 (2.20-2.20)
Ramachandran outliers	138981	5503 (2.20-2.20)
Sidechain outliers	138945	5504 (2.20-2.20)
RSRZ outliers	127900	4800 (2.20-2.20)

The table below summarises the geometric issues observed across the polymeric chains and their fit to the electron density. The red, orange, yellow and green segments on the lower bar indicate the fraction of residues that contain outliers for  $\geq 3$ , 2, 1 and 0 types of geometric quality criteria respectively. A grey segment represents the fraction of residues that are not modelled. The numeric value for each fraction is indicated below the corresponding segment, with a dot representing fractions  $\leq 5\%$ . The upper red bar (where present) indicates the fraction of residues that have poor fit to the electron density. The numeric value is given above the bar.

Mol	Chain	Length	Quality of chain
1	A	444	<div> <div>5%</div> <div> <div></div> <div>83%</div> <div>8%</div> <div>9%</div> </div> </div>
1	B	444	<div> <div>4%</div> <div> <div></div> <div>81%</div> <div>9%</div> <div>9%</div> </div> </div>

## 2 Entry composition [i](#)

There are 9 unique types of molecules in this entry. The entry contains 6874 atoms, of which 0 are hydrogens and 0 are deuteriums.

In the tables below, the ZeroOcc column contains the number of atoms modelled with zero occupancy, the AltConf column contains the number of residues with at least one atom in alternate conformation and the Trace column contains the number of residues modelled with at most 2 atoms.

- Molecule 1 is a protein called Nitric oxide synthase.

Mol	Chain	Residues	Atoms					ZeroOcc	AltConf	Trace
1	A	405	Total	C	N	O	S	0	0	0
			3220	2047	567	590	16			
1	B	404	Total	C	N	O	S	0	0	0
			3218	2046	567	589	16			

There are 4 discrepancies between the modelled and reference sequences:

Chain	Residue	Modelled	Actual	Comment	Reference
A	100	ARG	CYS	SEE REMARK 999	UNP P29476
A	368	ASP	ASN	ENGINEERED MUTATION	UNP P29476
B	100	ARG	CYS	SEE REMARK 999	UNP P29476
B	368	ASP	ASN	ENGINEERED MUTATION	UNP P29476

- Molecule 2 is PROTOPORPHYRIN IX CONTAINING FE (three-letter code: HEM) (formula:  $C_{34}H_{32}FeN_4O_4$ ).



Mol	Chain	Residues	Atoms				ZeroOcc	AltConf
2	A	1	Total	C	Fe	N	O	
			43	34	1	4	4	
2	B	1	Total	C	Fe	N	O	
			43	34	1	4	4	

- Molecule 3 is ACETATE ION (three-letter code: ACT) (formula:  $C_2H_3O_2$ ).



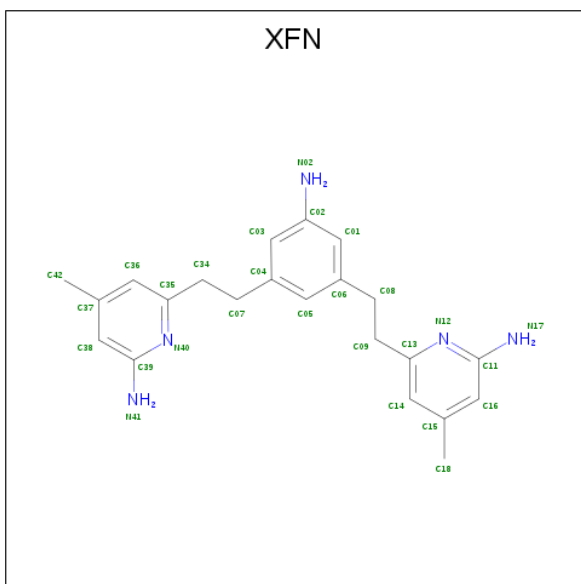
Mol	Chain	Residues	Atoms			ZeroOcc	AltConf
3	A	1	Total	C	O		
			4	2	2		
3	B	1	Total	C	O		
			4	2	2		

- Molecule 4 is GLYCEROL (three-letter code: GOL) (formula:  $C_3H_8O_3$ ).



Mol	Chain	Residues	Atoms			ZeroOcc	AltConf
4	A	1	Total	C	O	0	0
			6	3	3		
4	B	1	Total	C	O	0	0
			6	3	3		

- Molecule 5 is 6,6'-[(5-aminobenzene-1,3-diyl)diethane-2,1-diyl]bis(4-methylpyridin-2-amine) (three-letter code: XFN) (formula: C<sub>22</sub>H<sub>27</sub>N<sub>5</sub>).



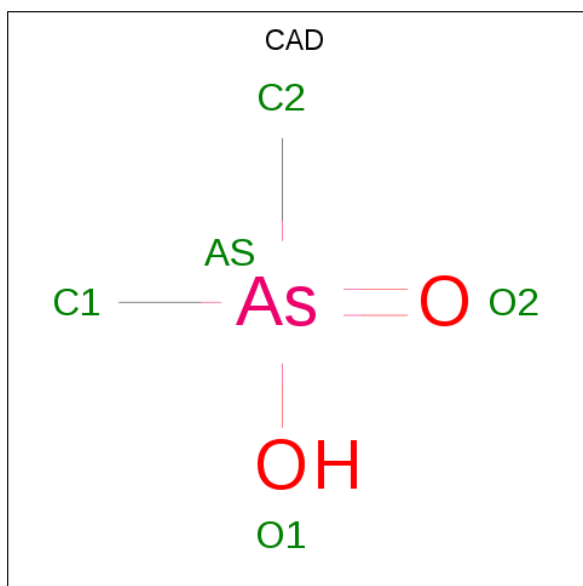
Mol	Chain	Residues	Atoms			ZeroOcc	AltConf
5	A	1	Total	C	N	0	0
			27	22	5		

*Continued on next page...*

*Continued from previous page...*

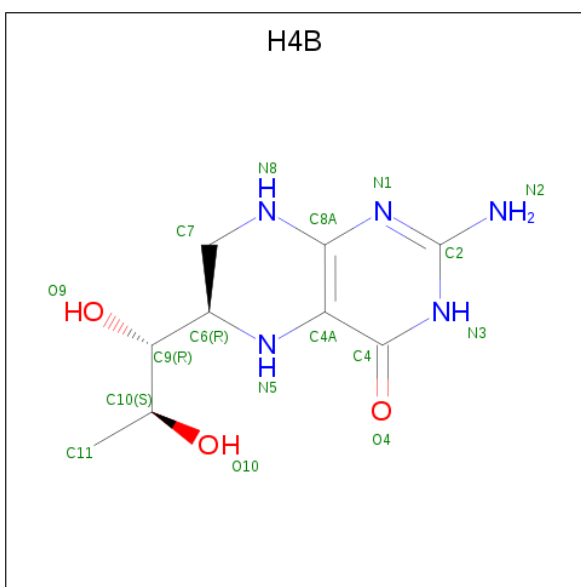
Mol	Chain	Residues	Atoms			ZeroOcc	AltConf
5	B	1	Total	C	N	0	0
			27	22	5		

- Molecule 6 is CACODYLIC ACID (three-letter code: CAD) (formula:  $C_2H_7AsO_2$ ).



Mol	Chain	Residues	Atoms			ZeroOcc	AltConf
6	A	1	Total	As	C	0	0
			3	1	2		
6	B	1	Total	As	C	0	0
			3	1	2		

- Molecule 7 is 5,6,7,8-TETRAHYDROBIOPTERIN (three-letter code: H4B) (formula:  $C_9H_{15}N_5O_3$ ).



Mol	Chain	Residues	Atoms				ZeroOcc	AltConf
7	A	1	Total	C	N	O	0	0
			17	9	5	3		
7	B	1	Total	C	N	O	0	0
			17	9	5	3		

- Molecule 8 is ZINC ION (three-letter code: ZN) (formula: Zn).

Mol	Chain	Residues	Atoms		ZeroOcc	AltConf
8	B	1	Total	Zn	0	0
			1	1		

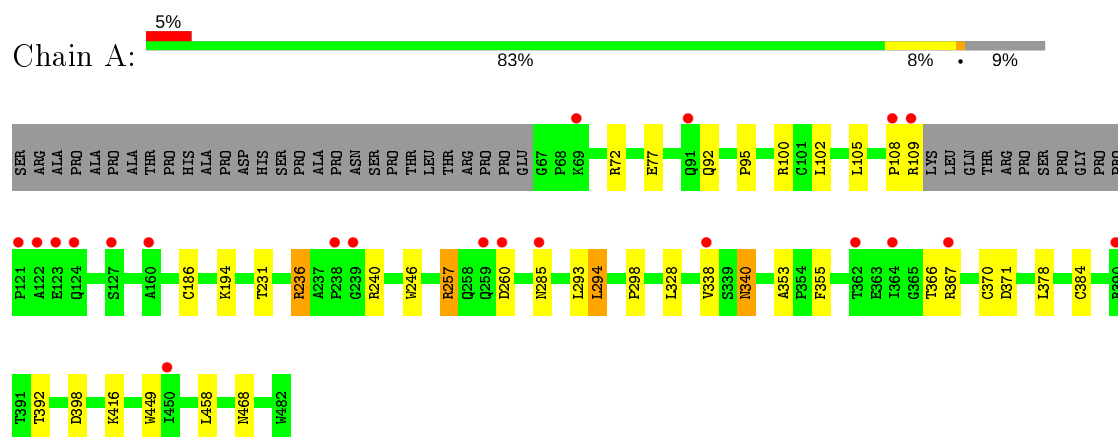
- Molecule 9 is water.

Mol	Chain	Residues	Atoms		ZeroOcc	AltConf
9	A	118	Total	O	0	0
			118	118		
9	B	117	Total	O	0	0
			117	117		

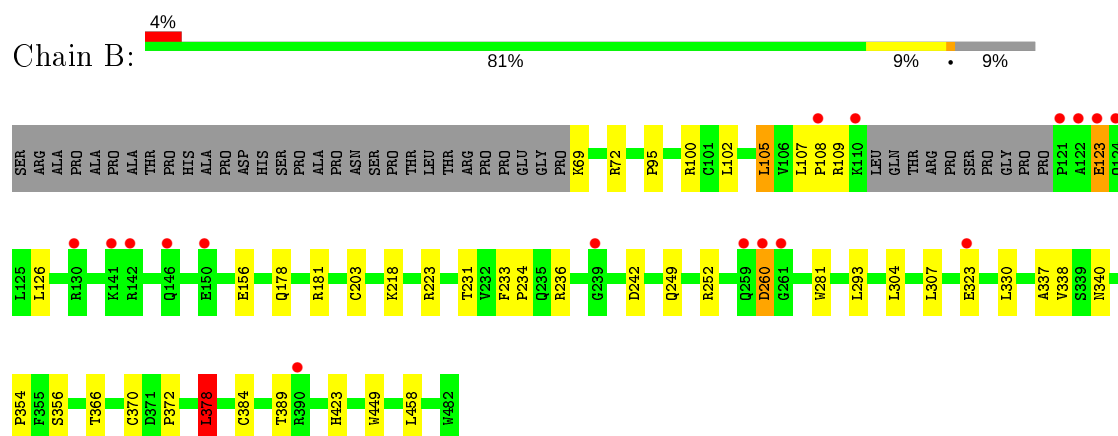
### 3 Residue-property plots [i](#)

These plots are drawn for all protein, RNA and DNA chains in the entry. The first graphic for a chain summarises the proportions of the various outlier classes displayed in the second graphic. The second graphic shows the sequence view annotated by issues in geometry and electron density. Residues are color-coded according to the number of geometric quality criteria for which they contain at least one outlier: green = 0, yellow = 1, orange = 2 and red = 3 or more. A red dot above a residue indicates a poor fit to the electron density ( $RSRZ > 2$ ). Stretches of 2 or more consecutive residues without any outlier are shown as a green connector. Residues present in the sample, but not in the model, are shown in grey.

#### • Molecule 1: Nitric oxide synthase



#### • Molecule 1: Nitric oxide synthase





## 4 Data and refinement statistics

Property	Value	Source
Space group	P 21 21 21	Depositor
Cell constants a, b, c, $\alpha$ , $\beta$ , $\gamma$	57.97Å 106.92Å 157.06Å 90.00° 90.00° 90.00°	Depositor
Resolution (Å)	37.40 – 2.20 37.40 – 2.20	Depositor EDS
% Data completeness (in resolution range)	99.4 (37.40-2.20) 99.4 (37.40-2.20)	Depositor EDS
$R_{merge}$	0.07	Depositor
$R_{sym}$	0.07	Depositor
$\langle I/\sigma(I) \rangle$ <sup>1</sup>	2.31 (at 2.20Å)	Xtriage
Refinement program	REFMAC 5.5.0109, CNS	Depositor
R, $R_{free}$	0.179 , 0.215 0.181 , 0.217	Depositor DCC
$R_{free}$ test set	2497 reflections (4.98%)	wwPDB-VP
Wilson B-factor (Å <sup>2</sup> )	39.3	Xtriage
Anisotropy	0.105	Xtriage
Bulk solvent $k_{sol}$ (e/Å <sup>3</sup> ), $B_{sol}$ (Å <sup>2</sup> )	0.35 , 34.4	EDS
L-test for twinning <sup>2</sup>	$\langle  L  \rangle = 0.49$ , $\langle L^2 \rangle = 0.32$	Xtriage
Estimated twinning fraction	No twinning to report.	Xtriage
$F_o, F_c$ correlation	0.96	EDS
Total number of atoms	6874	wwPDB-VP
Average B, all atoms (Å <sup>2</sup> )	41.0	wwPDB-VP

Xtriage's analysis on translational NCS is as follows: *The largest off-origin peak in the Patterson function is 3.69% of the height of the origin peak. No significant pseudotranslation is detected.*

<sup>1</sup>Intensities estimated from amplitudes.

<sup>2</sup>Theoretical values of  $\langle |L| \rangle$ ,  $\langle L^2 \rangle$  for acentric reflections are 0.5, 0.333 respectively for untwinned datasets, and 0.375, 0.2 for perfectly twinned datasets.

## 5 Model quality [i](#)

### 5.1 Standard geometry [i](#)

Bond lengths and bond angles in the following residue types are not validated in this section: GOL, ZN, H4B, XFN, ACT, HEM, CAD

The Z score for a bond length (or angle) is the number of standard deviations the observed value is removed from the expected value. A bond length (or angle) with  $|Z| > 5$  is considered an outlier worth inspection. RMSZ is the root-mean-square of all Z scores of the bond lengths (or angles).

Mol	Chain	Bond lengths		Bond angles	
		RMSZ	$\# Z  > 5$	RMSZ	$\# Z  > 5$
1	A	0.53	0/3310	0.59	0/4508
1	B	0.53	1/3307 (0.0%)	0.61	1/4502 (0.0%)
All	All	0.53	1/6617 (0.0%)	0.60	1/9010 (0.0%)

All (1) bond length outliers are listed below:

Mol	Chain	Res	Type	Atoms	Z	Observed(Å)	Ideal(Å)
1	B	203	CYS	CB-SG	-5.33	1.73	1.81

All (1) bond angle outliers are listed below:

Mol	Chain	Res	Type	Atoms	Z	Observed(°)	Ideal(°)
1	B	378	LEU	CA-CB-CG	5.00	126.81	115.30

There are no chirality outliers.

There are no planarity outliers.

### 5.2 Too-close contacts [i](#)

In the following table, the Non-H and H(model) columns list the number of non-hydrogen atoms and hydrogen atoms in the chain respectively. The H(added) column lists the number of hydrogen atoms added and optimized by MolProbity. The Clashes column lists the number of clashes within the asymmetric unit, whereas Symm-Clashes lists symmetry related clashes.

Mol	Chain	Non-H	H(model)	H(added)	Clashes	Symm-Clashes
1	A	3220	0	3126	24	0
1	B	3218	0	3129	24	0
2	A	43	0	30	5	0
2	B	43	0	30	2	0

*Continued on next page...*

*Continued from previous page...*

Mol	Chain	Non-H	H(model)	H(added)	Clashes	Symm-Clashes
3	A	4	0	3	0	0
3	B	4	0	3	0	0
4	A	6	0	8	0	0
4	B	6	0	8	0	0
5	A	27	0	27	4	0
5	B	27	0	27	6	0
6	A	3	0	0	2	0
6	B	3	0	0	1	0
7	A	17	0	15	1	0
7	B	17	0	15	1	0
8	B	1	0	0	0	0
9	A	118	0	0	4	0
9	B	117	0	0	2	0
All	All	6874	0	6421	54	0

The all-atom clashscore is defined as the number of clashes found per 1000 atoms (including hydrogen atoms). The all-atom clashscore for this structure is 4.

All (54) close contacts within the same asymmetric unit are listed below, sorted by their clash magnitude.

Atom-1	Atom-2	Interatomic distance (Å)	Clash overlap (Å)
1:B:384:CYS:SG	6:B:950:CAD:AS	2.55	1.25
1:A:384:CYS:SG	6:A:950:CAD:AS	2.66	1.14
1:A:236:ARG:HG3	1:A:236:ARG:HH11	1.17	1.07
1:B:338:VAL:HG22	5:B:800:XFN:H03	1.40	1.03
5:B:800:XFN:C14	5:B:800:XFN:H01	2.07	0.84
1:A:257:ARG:HG3	1:A:257:ARG:HH11	1.46	0.80
1:A:236:ARG:HG3	1:A:236:ARG:NH1	1.91	0.80
5:A:800:XFN:H08	9:A:1012:HOH:O	1.86	0.76
2:B:500:HEM:HBA2	5:B:800:XFN:H34	1.71	0.73
1:B:109:ARG:HA	9:B:1214:HOH:O	1.89	0.71
1:B:338:VAL:CG2	5:B:800:XFN:H03	2.21	0.68
1:A:285:ASN:HB3	9:A:1093:HOH:O	1.94	0.67
1:B:236:ARG:HD2	1:B:242:ASP:OD1	1.96	0.65
9:A:1090:HOH:O	1:B:109:ARG:HD2	1.99	0.62
1:B:366:THR:O	1:B:370:CYS:HB2	2.00	0.61
1:A:257:ARG:NH1	1:A:257:ARG:HG3	2.11	0.59
2:A:500:HEM:HBA2	5:A:800:XFN:H34	1.83	0.59
2:A:500:HEM:O2A	5:A:800:XFN:H05	2.03	0.57
5:B:800:XFN:H14	5:B:800:XFN:H01	1.88	0.56
1:B:378:LEU:HB2	9:B:1126:HOH:O	2.05	0.56

*Continued on next page...*

*Continued from previous page...*

Atom-1	Atom-2	Interatomic distance (Å)	Clash overlap (Å)
1:A:370:CYS:SG	1:A:378:LEU:HD13	2.46	0.55
1:A:338:VAL:HG22	5:A:800:XFN:H03	1.89	0.55
1:A:246:TRP:HB2	1:A:294:LEU:HB3	1.89	0.54
1:B:126:LEU:HD11	1:B:156:GLU:HG2	1.89	0.53
1:A:378:LEU:HB2	9:A:1008:HOH:O	2.07	0.53
1:B:370:CYS:SG	1:B:378:LEU:HD13	2.51	0.51
1:A:236:ARG:CG	1:A:236:ARG:NH1	2.65	0.49
1:A:366:THR:O	1:A:370:CYS:HB2	2.14	0.48
1:A:340:ASN:HD22	1:A:340:ASN:H	1.61	0.47
1:B:123:GLU:HG2	1:B:123:GLU:H	1.42	0.47
1:A:257:ARG:CG	1:A:257:ARG:HH11	2.24	0.47
1:A:95:PRO:HB3	1:A:108:PRO:HB2	1.95	0.47
1:B:231:THR:O	1:B:354:PRO:HD2	2.14	0.47
1:B:178:GLN:HE22	1:B:181:ARG:HH11	1.61	0.47
2:A:500:HEM:HBB2	2:A:500:HEM:HHC	1.98	0.46
1:B:233:PHE:HB3	1:B:234:PRO:CD	2.46	0.45
1:B:281:TRP:HB2	1:B:304:LEU:HD21	2.00	0.44
1:A:392:THR:HB	1:B:423:HIS:HB2	1.99	0.44
1:B:95:PRO:HG3	1:B:108:PRO:HG2	2.00	0.43
1:B:249:GLN:HB2	1:B:252:ARG:HG2	2.00	0.43
1:B:293:LEU:HD11	1:B:307:LEU:HD21	1.99	0.43
1:B:389:THR:O	1:B:389:THR:HG22	2.19	0.43
1:A:186:CYS:HB2	2:A:500:HEM:ND	2.34	0.41
1:A:240:ARG:HD3	1:A:298:PRO:HB3	2.01	0.41
1:A:449:TRP:HA	7:A:600:H4B:N1	2.35	0.41
1:A:367:ARG:NH2	1:A:371:ASP:OD2	2.53	0.41
1:B:105:LEU:HB2	1:B:108:PRO:HG3	2.03	0.41
1:A:384:CYS:CB	6:A:950:CAD:AS	3.29	0.41
1:B:337:ALA:HB2	1:B:356:SER:HB3	2.03	0.40
1:B:449:TRP:HA	7:B:600:H4B:N1	2.35	0.40
2:B:500:HEM:CBA	5:B:800:XFN:H34	2.44	0.40
1:A:355:PHE:CD1	2:A:500:HEM:CAC	3.05	0.40
1:A:77:GLU:HG3	1:B:372:PRO:HG2	2.03	0.40
1:A:231:THR:O	1:A:353:ALA:HA	2.22	0.40

There are no symmetry-related clashes.

## 5.3 Torsion angles

### 5.3.1 Protein backbone

In the following table, the Percentiles column shows the percent Ramachandran outliers of the chain as a percentile score with respect to all X-ray entries followed by that with respect to entries of similar resolution.

The Analysed column shows the number of residues for which the backbone conformation was analysed, and the total number of residues.

Mol	Chain	Analysed	Favoured	Allowed	Outliers	Percentiles	
1	A	401/444 (90%)	393 (98%)	8 (2%)	0	100	100
1	B	400/444 (90%)	390 (98%)	9 (2%)	1 (0%)	41	46
All	All	801/888 (90%)	783 (98%)	17 (2%)	1 (0%)	51	60

All (1) Ramachandran outliers are listed below:

Mol	Chain	Res	Type
1	B	260	ASP

### 5.3.2 Protein sidechains

In the following table, the Percentiles column shows the percent sidechain outliers of the chain as a percentile score with respect to all X-ray entries followed by that with respect to entries of similar resolution.

The Analysed column shows the number of residues for which the sidechain conformation was analysed, and the total number of residues.

Mol	Chain	Analysed	Rotameric	Outliers	Percentiles	
1	A	344/377 (91%)	326 (95%)	18 (5%)	23	28
1	B	344/377 (91%)	329 (96%)	15 (4%)	28	35
All	All	688/754 (91%)	655 (95%)	33 (5%)	25	32

All (33) residues with a non-rotameric sidechain are listed below:

Mol	Chain	Res	Type
1	A	72	ARG
1	A	92	GLN
1	A	100	ARG
1	A	102	LEU
1	A	105	LEU

*Continued on next page...*

*Continued from previous page...*

Mol	Chain	Res	Type
1	A	109	ARG
1	A	194	LYS
1	A	236	ARG
1	A	257	ARG
1	A	260	ASP
1	A	293	LEU
1	A	294	LEU
1	A	328	LEU
1	A	340	ASN
1	A	398	ASP
1	A	416	LYS
1	A	458	LEU
1	A	468	ASN
1	B	69	LYS
1	B	72	ARG
1	B	100	ARG
1	B	102	LEU
1	B	105	LEU
1	B	107	LEU
1	B	123	GLU
1	B	218	LYS
1	B	223	ARG
1	B	260	ASP
1	B	323	GLU
1	B	330	LEU
1	B	340	ASN
1	B	378	LEU
1	B	458	LEU

Some sidechains can be flipped to improve hydrogen bonding and reduce clashes. All (13) such sidechains are listed below:

Mol	Chain	Res	Type
1	A	91	GLN
1	A	278	GLN
1	A	340	ASN
1	A	376	ASN
1	A	413	GLN
1	A	468	ASN
1	B	178	GLN
1	B	191	GLN
1	B	222	ASN
1	B	225	ASN

*Continued on next page...*

*Continued from previous page...*

Mol	Chain	Res	Type
1	B	340	ASN
1	B	376	ASN
1	B	405	ASN

### 5.3.3 RNA ⓘ

There are no RNA molecules in this entry.

## 5.4 Non-standard residues in protein, DNA, RNA chains ⓘ

There are no non-standard protein/DNA/RNA residues in this entry.

## 5.5 Carbohydrates ⓘ

There are no carbohydrates in this entry.

## 5.6 Ligand geometry ⓘ

Of 13 ligands modelled in this entry, 1 is monoatomic - leaving 12 for Mogul analysis.

In the following table, the Counts columns list the number of bonds (or angles) for which Mogul statistics could be retrieved, the number of bonds (or angles) that are observed in the model and the number of bonds (or angles) that are defined in the Chemical Component Dictionary. The Link column lists molecule types, if any, to which the group is linked. The Z score for a bond length (or angle) is the number of standard deviations the observed value is removed from the expected value. A bond length (or angle) with  $|Z| > 2$  is considered an outlier worth inspection. RMSZ is the root-mean-square of all Z scores of the bond lengths (or angles).

Mol	Type	Chain	Res	Link	Bond lengths			Bond angles		
					Counts	RMSZ	$\# Z  > 2$	Counts	RMSZ	$\# Z  > 2$
4	GOL	B	880	-	5,5,5	0.28	0	5,5,5	0.47	0
7	H4B	B	600	-	16,18,18	1.02	0	11,26,26	2.61	6 (54%)
6	CAD	A	950	-	0,2,4	0.00	-	0,1,6	0.00	-
3	ACT	B	860	-	1,3,3	1.48	0	0,3,3	0.00	-
3	ACT	A	860	-	1,3,3	1.34	0	0,3,3	0.00	-
2	HEM	A	500	1	27,50,50	2.08	5 (18%)	17,82,82	1.54	2 (11%)
4	GOL	A	880	-	5,5,5	0.36	0	5,5,5	0.41	0
6	CAD	B	950	-	0,2,4	0.00	-	0,1,6	0.00	-
2	HEM	B	500	1	27,50,50	2.13	5 (18%)	17,82,82	2.02	3 (17%)
5	XFN	B	800	-	29,29,29	0.62	0	38,40,40	1.78	6 (15%)

Mol	Type	Chain	Res	Link	Bond lengths			Bond angles		
					Counts	RMSZ	# Z  > 2	Counts	RMSZ	# Z  > 2
5	XFN	A	800	-	29,29,29	0.67	0	38,40,40	1.57	7 (18%)
7	H4B	A	600	-	16,18,18	0.90	0	11,26,26	2.97	6 (54%)

In the following table, the Chirals column lists the number of chiral outliers, the number of chiral centers analysed, the number of these observed in the model and the number defined in the Chemical Component Dictionary. Similar counts are reported in the Torsion and Rings columns. '-' means no outliers of that kind were identified.

Mol	Type	Chain	Res	Link	Chirals	Torsions	Rings
4	GOL	B	880	-	-	0/4/4/4	-
7	H4B	B	600	-	-	0/8/17/17	0/2/2/2
2	HEM	A	500	1	-	0/6/54/54	-
4	GOL	A	880	-	-	1/4/4/4	-
2	HEM	B	500	1	-	0/6/54/54	-
5	XFN	B	800	-	-	2/10/10/10	0/3/3/3
5	XFN	A	800	-	-	2/10/10/10	0/3/3/3
7	H4B	A	600	-	-	0/8/17/17	0/2/2/2

All (10) bond length outliers are listed below:

Mol	Chain	Res	Type	Atoms	Z	Observed(Å)	Ideal(Å)
2	B	500	HEM	C3D-C2D	5.04	1.52	1.37
2	A	500	HEM	C3D-C2D	4.77	1.51	1.37
2	B	500	HEM	C3B-C2B	-4.72	1.33	1.40
2	A	500	HEM	C3B-C2B	-4.24	1.34	1.40
2	A	500	HEM	C3C-C2C	-3.97	1.34	1.40
2	B	500	HEM	C3B-CAB	3.92	1.55	1.47
2	A	500	HEM	C3B-CAB	3.73	1.55	1.47
2	B	500	HEM	C3C-CAC	3.72	1.55	1.47
2	B	500	HEM	C3C-C2C	-3.61	1.35	1.40
2	A	500	HEM	C3C-CAC	3.42	1.54	1.47

All (30) bond angle outliers are listed below:

Mol	Chain	Res	Type	Atoms	Z	Observed(°)	Ideal(°)
2	B	500	HEM	CBA-CAA-C2A	-5.91	101.59	112.49
5	B	800	XFN	C39-N40-C35	5.81	122.50	118.10
7	A	600	H4B	C4-C4A-N5	5.06	123.37	119.12
2	A	500	HEM	CBA-CAA-C2A	-4.72	103.78	112.49
7	B	600	H4B	C4-C4A-C8A	4.68	118.73	114.57
5	A	800	XFN	C39-N40-C35	4.48	121.49	118.10

*Continued on next page...*



*Continued from previous page...*

Mol	Chain	Res	Type	Atoms	Z	Observed(°)	Ideal(°)
5	B	800	XFN	C11-N12-C13	4.36	121.40	118.10
7	A	600	H4B	C4-N3-C2	4.31	122.77	115.93
5	A	800	XFN	C11-N12-C13	4.14	121.24	118.10
7	A	600	H4B	C4-C4A-C8A	3.86	118.00	114.57
7	A	600	H4B	N3-C2-N1	-3.85	119.38	125.42
5	B	800	XFN	C14-C13-N12	-3.60	119.08	122.90
7	B	600	H4B	N3-C2-N1	-3.46	119.99	125.42
5	A	800	XFN	C34-C35-N40	3.46	121.10	115.95
7	B	600	H4B	C4-N3-C2	3.45	121.41	115.93
5	B	800	XFN	C36-C35-N40	-3.43	119.26	122.90
2	B	500	HEM	CBD-CAD-C3D	-3.39	106.24	112.48
7	B	600	H4B	C4-C4A-N5	3.29	121.88	119.12
2	B	500	HEM	C1D-C2D-C3D	-3.15	104.80	107.00
5	B	800	XFN	C34-C35-N40	2.94	120.33	115.95
5	A	800	XFN	C36-C35-N40	-2.84	119.89	122.90
7	A	600	H4B	C2-N1-C8A	2.69	120.56	114.54
5	A	800	XFN	C14-C13-N12	-2.66	120.08	122.90
7	A	600	H4B	N2-C2-N3	2.53	121.19	117.25
5	B	800	XFN	N41-C39-N40	2.49	120.42	116.49
7	B	600	H4B	C2-N1-C8A	2.46	120.04	114.54
5	A	800	XFN	C09-C13-N12	2.30	119.38	115.95
7	B	600	H4B	N2-C2-N3	2.12	120.55	117.25
5	A	800	XFN	N17-C11-N12	2.10	119.81	116.49
2	A	500	HEM	C1D-C2D-C3D	-2.03	105.58	107.00

There are no chirality outliers.

All (5) torsion outliers are listed below:

Mol	Chain	Res	Type	Atoms
5	B	800	XFN	C08-C09-C13-N12
5	B	800	XFN	C08-C09-C13-C14
5	A	800	XFN	C06-C08-C09-C13
4	A	880	GOL	C1-C2-C3-O3
5	A	800	XFN	C08-C09-C13-N12

There are no ring outliers.

8 monomers are involved in 18 short contacts:

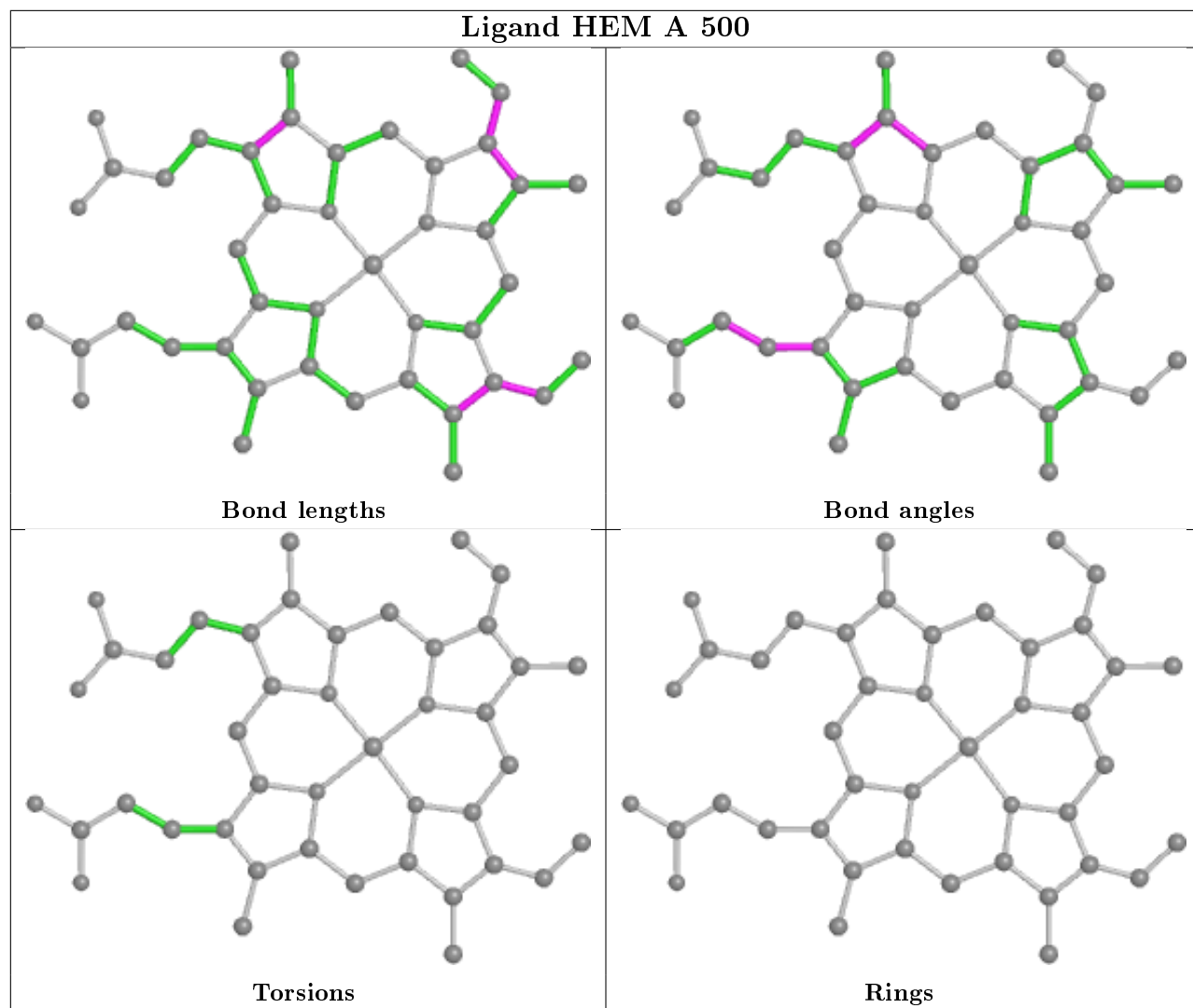
Mol	Chain	Res	Type	Clashes	Symm-Clashes
7	B	600	H4B	1	0
6	A	950	CAD	2	0

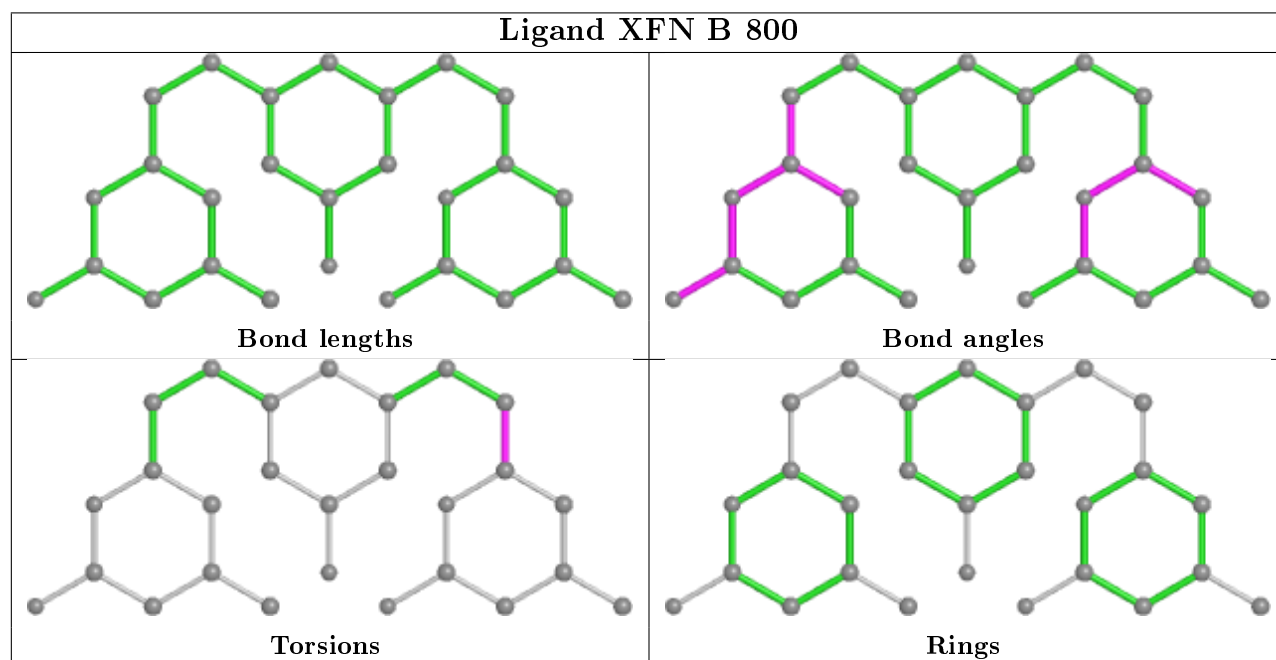
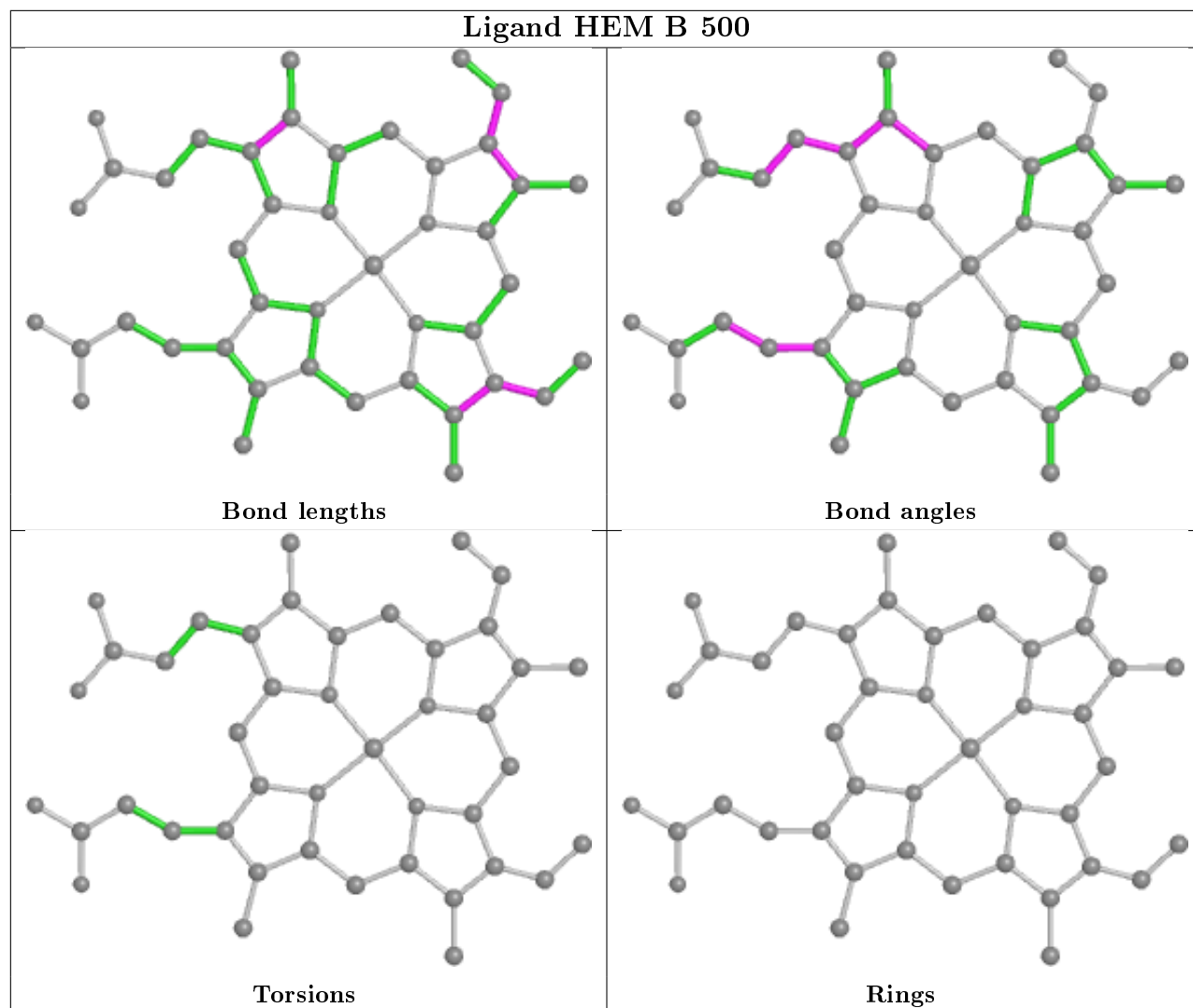
*Continued on next page...*

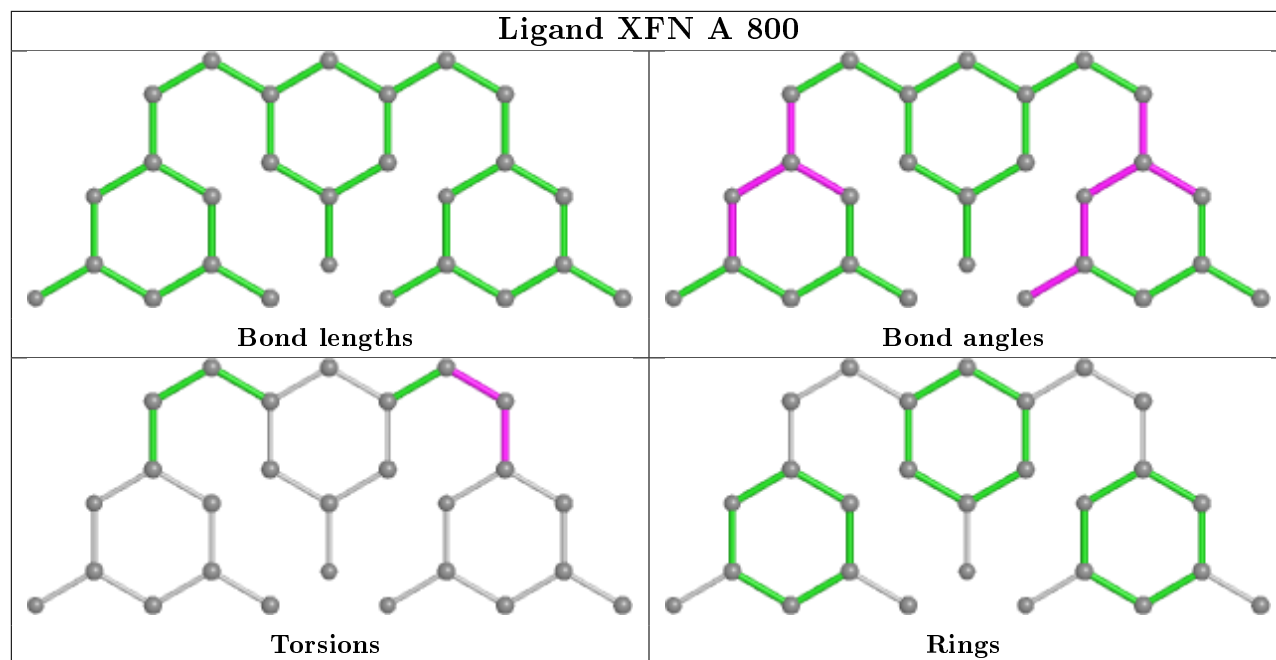
*Continued from previous page...*

Mol	Chain	Res	Type	Clashes	Symm-Clashes
2	A	500	HEM	5	0
6	B	950	CAD	1	0
2	B	500	HEM	2	0
5	B	800	XFN	6	0
5	A	800	XFN	4	0
7	A	600	H4B	1	0

The following is a two-dimensional graphical depiction of Mogul quality analysis of bond lengths, bond angles, torsion angles, and ring geometry for all instances of the Ligand of Interest. In addition, ligands with molecular weight > 250 and outliers as shown on the validation Tables will also be included. For torsion angles, if less than 5% of the Mogul distribution of torsion angles is within 10 degrees of the torsion angle in question, then that torsion angle is considered an outlier. Any bond that is central to one or more torsion angles identified as an outlier by Mogul will be highlighted in the graph. For rings, the root-mean-square deviation (RMSD) between the ring in question and similar rings identified by Mogul is calculated over all ring torsion angles. If the average RMSD is greater than 60 degrees and the minimal RMSD between the ring in question and any Mogul-identified rings is also greater than 60 degrees, then that ring is considered an outlier. The outliers are highlighted in purple. The color gray indicates Mogul did not find sufficient equivalents in the CSD to analyse the geometry.







## 5.7 Other polymers [i](#)

There are no such residues in this entry.

## 5.8 Polymer linkage issues [i](#)

There are no chain breaks in this entry.

## 6 Fit of model and data ⓘ

### 6.1 Protein, DNA and RNA chains ⓘ

In the following table, the column labelled ‘#RSRZ> 2’ contains the number (and percentage) of RSRZ outliers, followed by percent RSRZ outliers for the chain as percentile scores relative to all X-ray entries and entries of similar resolution. The OWAB column contains the minimum, median, 95<sup>th</sup> percentile and maximum values of the occupancy-weighted average B-factor per residue. The column labelled ‘Q< 0.9’ lists the number of (and percentage) of residues with an average occupancy less than 0.9.

Mol	Chain	Analysed	<RSRZ>	#RSRZ>2	OWAB(Å <sup>2</sup> )	Q<0.9
1	A	405/444 (91%)	0.10	21 (5%) 27 26	26, 38, 61, 77	0
1	B	404/444 (90%)	-0.04	17 (4%) 36 34	26, 40, 62, 81	0
All	All	809/888 (91%)	0.03	38 (4%) 31 30	26, 39, 62, 81	0

All (38) RSRZ outliers are listed below:

Mol	Chain	Res	Type	RSRZ
1	A	259	GLN	5.6
1	A	239	GLY	5.1
1	B	110	LYS	4.8
1	B	259	GLN	4.7
1	A	121	PRO	4.3
1	A	69	LYS	4.2
1	A	123	GLU	4.0
1	B	108	PRO	3.8
1	B	239	GLY	3.6
1	B	260	ASP	3.3
1	A	260	ASP	3.3
1	A	109	ARG	3.0
1	B	121	PRO	3.0
1	A	122	ALA	2.9
1	B	261	GLY	2.9
1	B	142	ARG	2.9
1	B	141	LYS	2.8
1	A	124	GLN	2.8
1	B	146	GLN	2.7
1	B	124	GLN	2.7
1	B	122	ALA	2.6
1	A	338	VAL	2.6
1	A	160	ALA	2.4
1	A	362	THR	2.4

*Continued on next page...*

*Continued from previous page...*

Mol	Chain	Res	Type	RSRZ
1	B	323	GLU	2.4
1	A	108	PRO	2.4
1	A	238	PRO	2.4
1	B	123	GLU	2.3
1	B	390	ARG	2.3
1	A	364	ILE	2.3
1	A	91	GLN	2.2
1	A	390	ARG	2.1
1	B	130	ARG	2.1
1	B	150	GLU	2.1
1	A	285	ASN	2.0
1	A	127	SER	2.0
1	A	367	ARG	2.0
1	A	450	ILE	2.0

## 6.2 Non-standard residues in protein, DNA, RNA chains [i](#)

There are no non-standard protein/DNA/RNA residues in this entry.

## 6.3 Carbohydrates [i](#)

There are no carbohydrates in this entry.

## 6.4 Ligands [i](#)

In the following table, the Atoms column lists the number of modelled atoms in the group and the number defined in the chemical component dictionary. The B-factors column lists the minimum, median, 95<sup>th</sup> percentile and maximum values of B factors of atoms in the group. The column labelled 'Q< 0.9' lists the number of atoms with occupancy less than 0.9.

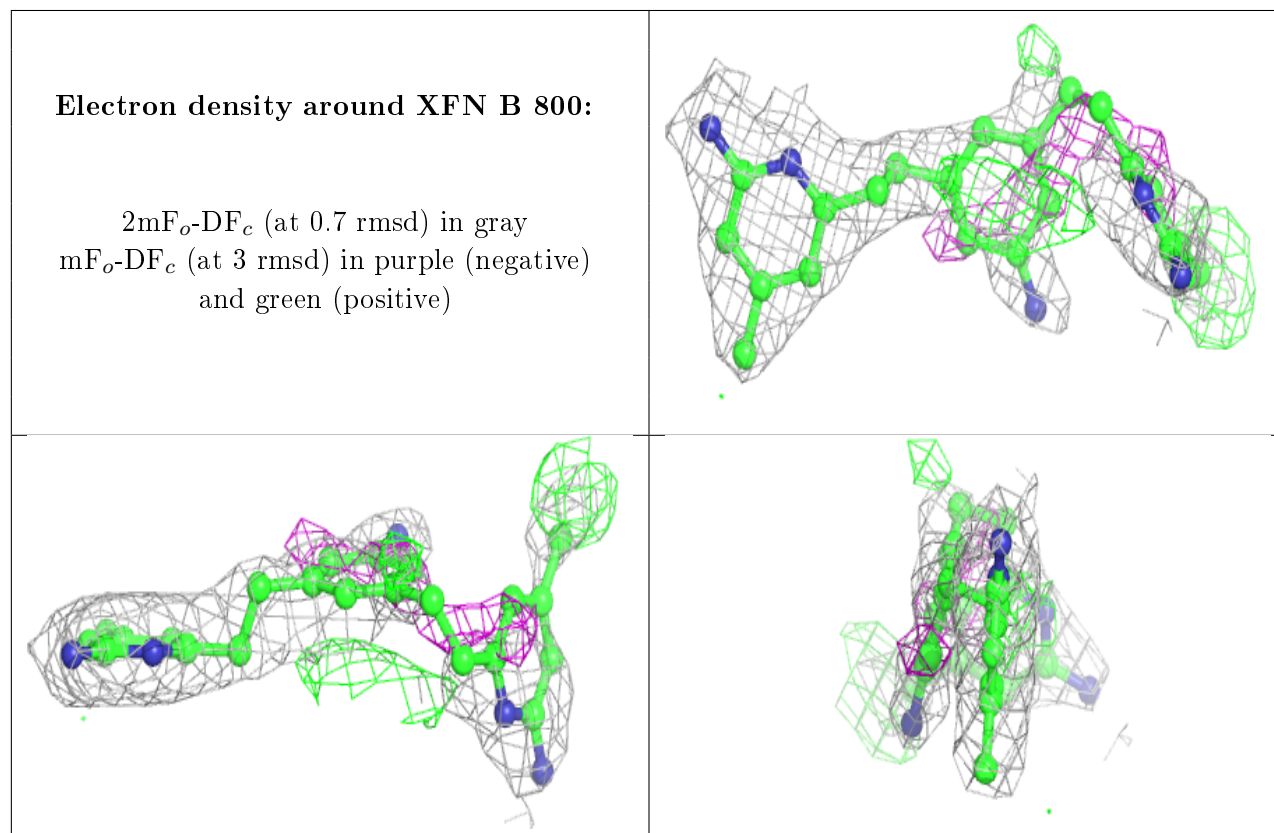
Mol	Type	Chain	Res	Atoms	RSCC	RSR	B-factors(Å <sup>2</sup> )	Q<0.9
5	XFN	B	800	27/27	0.82	0.28	37,65,81,81	0
5	XFN	A	800	27/27	0.82	0.35	32,66,87,87	0
4	GOL	A	880	6/6	0.86	0.40	73,74,75,75	0
6	CAD	B	950	3/5	0.90	0.21	86,86,87,87	0
4	GOL	B	880	6/6	0.92	0.20	63,64,65,65	0
3	ACT	B	860	4/4	0.95	0.27	51,53,54,54	0
3	ACT	A	860	4/4	0.96	0.15	54,54,55,56	0
7	H4B	B	600	17/17	0.97	0.11	34,35,36,36	0
2	HEM	B	500	43/43	0.98	0.12	26,29,40,44	0

*Continued on next page...*

*Continued from previous page...*

Mol	Type	Chain	Res	Atoms	RSCC	RSR	B-factors( $\text{\AA}^2$ )	Q<0.9
6	CAD	A	950	3/5	0.98	0.16	70,70,71,72	0
2	HEM	A	500	43/43	0.98	0.20	22,27,39,46	0
7	H4B	A	600	17/17	0.98	0.15	30,32,35,37	0
8	ZN	B	900	1/1	1.00	0.10	31,31,31,31	0

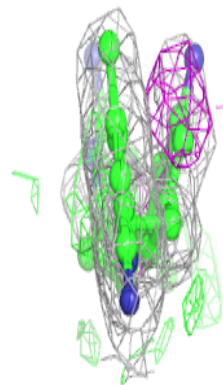
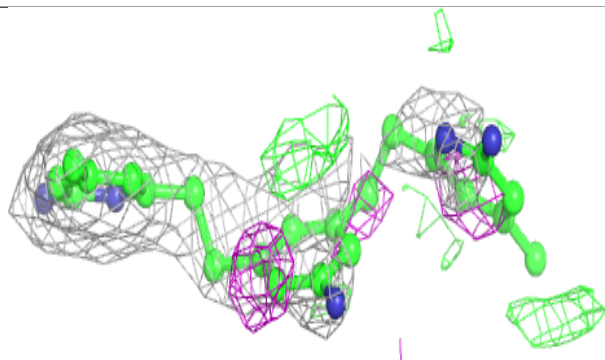
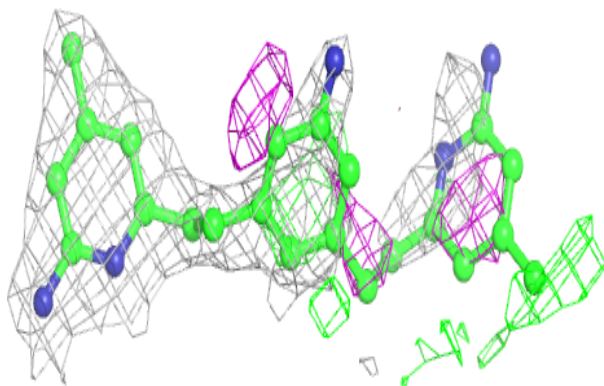
The following is a graphical depiction of the model fit to experimental electron density of all instances of the Ligand of Interest. In addition, ligands with molecular weight > 250 and outliers as shown on the geometry validation Tables will also be included. Each fit is shown from different orientation to approximate a three-dimensional view.





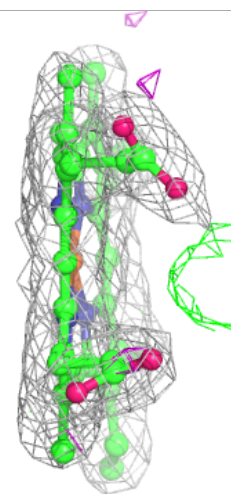
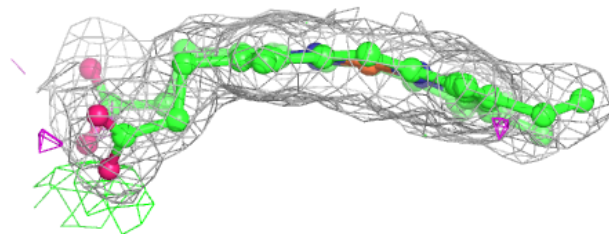
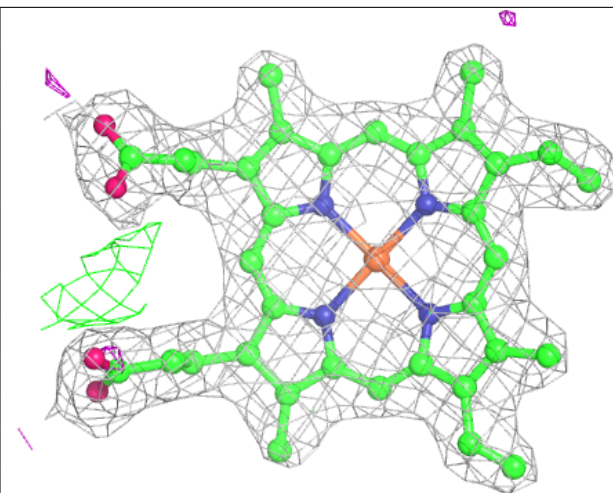
**Electron density around XFN A 800:**

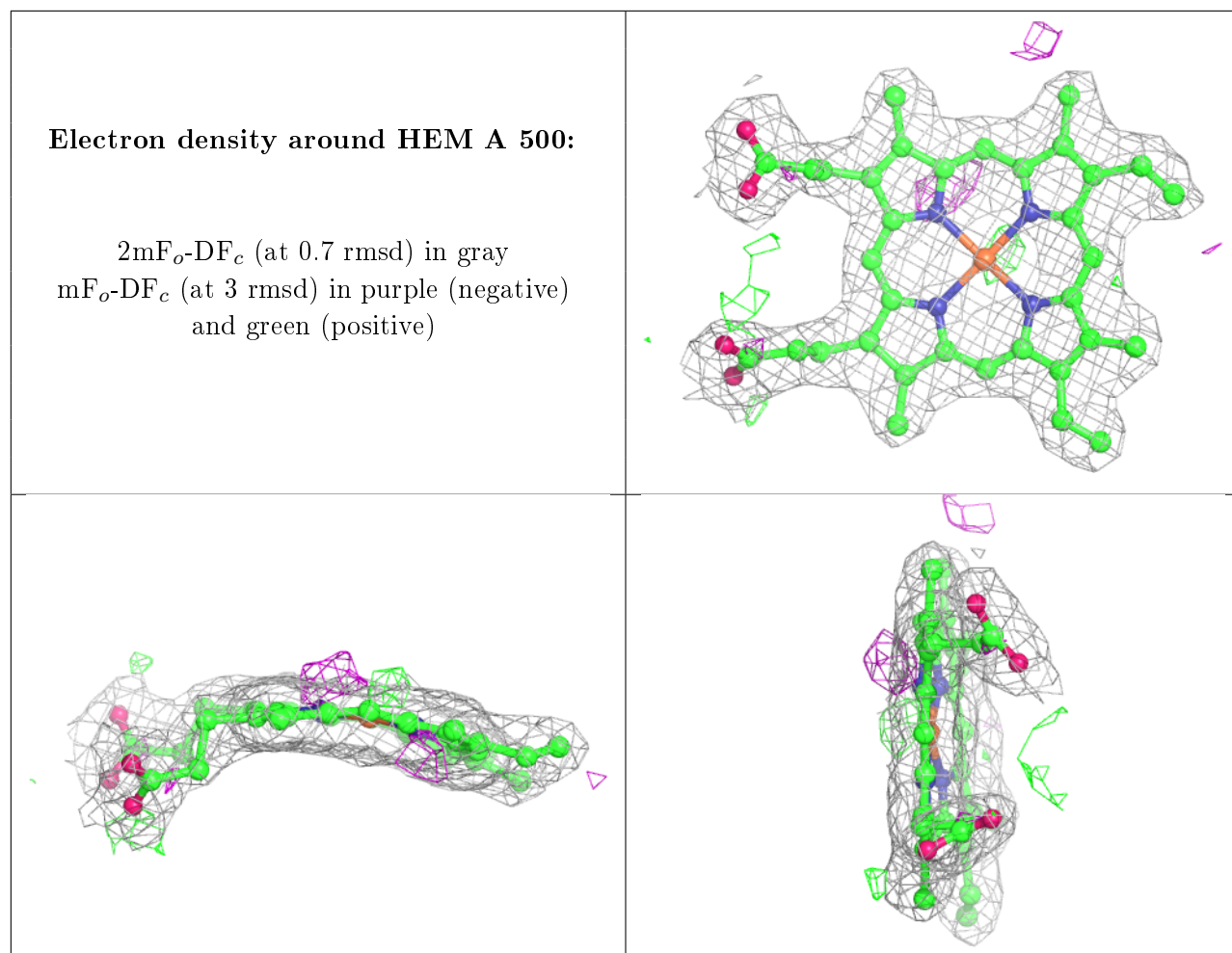
$2mF_o-DF_c$  (at 0.7 rmsd) in gray  
 $mF_o-DF_c$  (at 3 rmsd) in purple (negative)  
and green (positive)



**Electron density around HEM B 500:**

$2mF_o-DF_c$  (at 0.7 rmsd) in gray  
 $mF_o-DF_c$  (at 3 rmsd) in purple (negative)  
and green (positive)





## 6.5 Other polymers ⓘ

There are no such residues in this entry.