



Full wwPDB X-ray Structure Validation Report ⓘ

May 17, 2020 – 07:04 am BST

PDB ID : 4N8Q
Title : Alternative substrates of Mycobacterium tuberculosis anthranilate phosphoribosyl transferase
Authors : Castell, A.; Cookson, T.V.M.; Bulloch, E.; Evans, G.L.; Baker, E.N.; Lott, J.S.; Parker, E.J.
Deposited on : 2013-10-17
Resolution : 2.08 Å(reported)

This is a Full wwPDB X-ray Structure Validation Report for a publicly released PDB entry.

We welcome your comments at validation@mail.wwpdb.org

A user guide is available at

<https://www.wwpdb.org/validation/2017/XrayValidationReportHelp>

with specific help available everywhere you see the ⓘ symbol.

The following versions of software and data (see [references ⓘ](#)) were used in the production of this report:

MolProbity : 4.02b-467
Mogul : 1.8.5 (274361), CSD as541be (2020)
Xtriage (Phenix) : 1.13
EDS : 2.11
Percentile statistics : 20191225.v01 (using entries in the PDB archive December 25th 2019)
Refmac : 5.8.0158
CCP4 : 7.0.044 (Gargrove)
Ideal geometry (proteins) : Engh & Huber (2001)
Ideal geometry (DNA, RNA) : Parkinson et al. (1996)
Validation Pipeline (wwPDB-VP) : 2.11

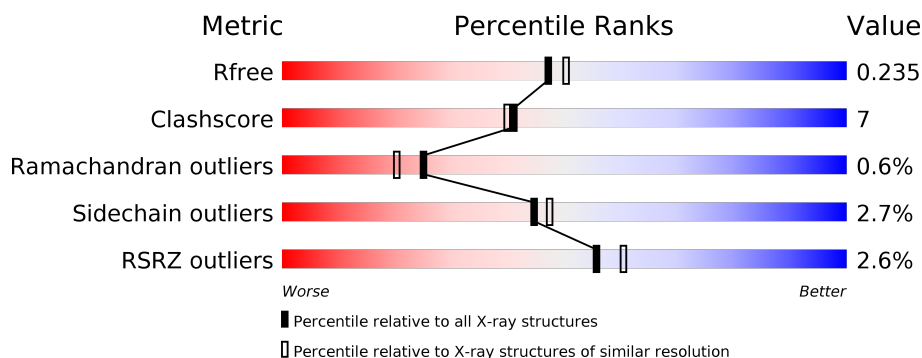
1 Overall quality at a glance

The following experimental techniques were used to determine the structure:

X-RAY DIFFRACTION

The reported resolution of this entry is 2.08 Å.

Percentile scores (ranging between 0-100) for global validation metrics of the entry are shown in the following graphic. The table shows the number of entries on which the scores are based.



Metric	Whole archive (#Entries)	Similar resolution (#Entries, resolution range(Å))
R_{free}	130704	6189 (2.10-2.06)
Clashscore	141614	6738 (2.10-2.06)
Ramachandran outliers	138981	6663 (2.10-2.06)
Sidechain outliers	138945	6664 (2.10-2.06)
RSRZ outliers	127900	6057 (2.10-2.06)

The table below summarises the geometric issues observed across the polymeric chains and their fit to the electron density. The red, orange, yellow and green segments on the lower bar indicate the fraction of residues that contain outliers for ≥ 3 , 2, 1 and 0 types of geometric quality criteria respectively. A grey segment represents the fraction of residues that are not modelled. The numeric value for each fraction is indicated below the corresponding segment, with a dot representing fractions $\leq 5\%$. The upper red bar (where present) indicates the fraction of residues that have poor fit to the electron density. The numeric value is given above the bar.

Mol	Chain	Length	Quality of chain
1	A	378	<div> <div>2%</div> <div> <div></div> <div>79%</div> <div>12%</div> <div>8%</div> </div> </div>
1	B	378	<div> <div>2%</div> <div> <div></div> <div>80%</div> <div>10%</div> <div>9%</div> </div> </div>

2 Entry composition

There are 3 unique types of molecules in this entry. The entry contains 5361 atoms, of which 0 are hydrogens and 0 are deuteriums.

In the tables below, the ZeroOcc column contains the number of atoms modelled with zero occupancy, the AltConf column contains the number of residues with at least one atom in alternate conformation and the Trace column contains the number of residues modelled with at most 2 atoms.

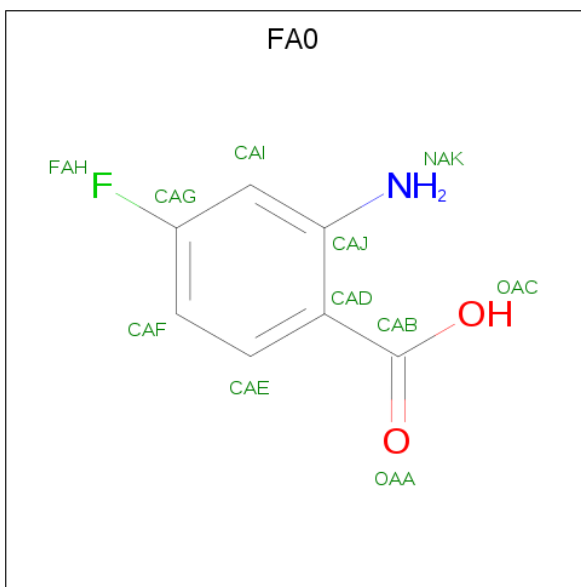
- Molecule 1 is a protein called Anthranilate phosphoribosyltransferase.

Mol	Chain	Residues	Atoms					ZeroOcc	AltConf	Trace
1	A	346	Total	C	N	O	S	0	3	0
			2533	1583	473	468	9			
1	B	345	Total	C	N	O	S	0	2	0
			2512	1573	464	466	9			

There are 16 discrepancies between the modelled and reference sequences:

Chain	Residue	Modelled	Actual	Comment	Reference
A	371	LEU	-	EXPRESSION TAG	UNP P66992
A	372	ALA	-	EXPRESSION TAG	UNP P66992
A	373	HIS	-	EXPRESSION TAG	UNP P66992
A	374	HIS	-	EXPRESSION TAG	UNP P66992
A	375	HIS	-	EXPRESSION TAG	UNP P66992
A	376	HIS	-	EXPRESSION TAG	UNP P66992
A	377	HIS	-	EXPRESSION TAG	UNP P66992
A	378	HIS	-	EXPRESSION TAG	UNP P66992
B	371	LEU	-	EXPRESSION TAG	UNP P66992
B	372	ALA	-	EXPRESSION TAG	UNP P66992
B	373	HIS	-	EXPRESSION TAG	UNP P66992
B	374	HIS	-	EXPRESSION TAG	UNP P66992
B	375	HIS	-	EXPRESSION TAG	UNP P66992
B	376	HIS	-	EXPRESSION TAG	UNP P66992
B	377	HIS	-	EXPRESSION TAG	UNP P66992
B	378	HIS	-	EXPRESSION TAG	UNP P66992

- Molecule 2 is 2-amino-4-fluorobenzoic acid (three-letter code: FA0) (formula: C₇H₆FN₂O₂).



Mol	Chain	Residues	Atoms					ZeroOcc	AltConf
2	A	1	Total	C	F	N	O	0	0
			11	7	1	1	2		
2	B	1	Total	C	F	N	O	0	0
			11	7	1	1	2		

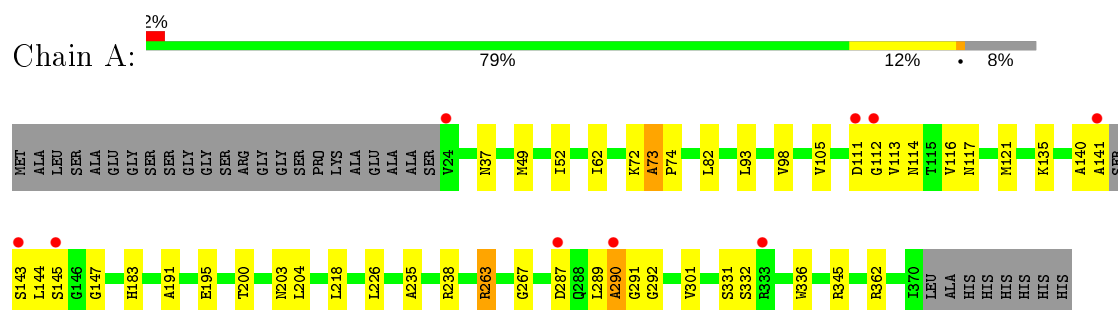
- Molecule 3 is water.

Mol	Chain	Residues	Atoms		ZeroOcc	AltConf
3	A	160	Total	O	0	0
			160	160		
3	B	134	Total	O	0	0
			134	134		

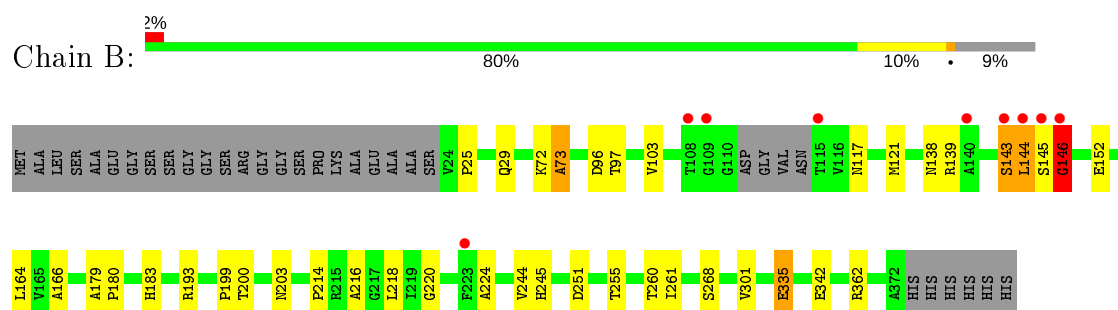
3 Residue-property plots [i](#)

These plots are drawn for all protein, RNA and DNA chains in the entry. The first graphic for a chain summarises the proportions of the various outlier classes displayed in the second graphic. The second graphic shows the sequence view annotated by issues in geometry and electron density. Residues are color-coded according to the number of geometric quality criteria for which they contain at least one outlier: green = 0, yellow = 1, orange = 2 and red = 3 or more. A red dot above a residue indicates a poor fit to the electron density ($RSRZ > 2$). Stretches of 2 or more consecutive residues without any outlier are shown as a green connector. Residues present in the sample, but not in the model, are shown in grey.

- Molecule 1: Anthranilate phosphoribosyltransferase



- Molecule 1: Anthranilate phosphoribosyltransferase



4 Data and refinement statistics

Property	Value	Source
Space group	P 21 21 21	Depositor
Cell constants a, b, c, α , β , γ	79.59 Å 91.00 Å 120.04 Å 90.00° 90.00° 90.00°	Depositor
Resolution (Å)	72.52 – 2.08 72.52 – 2.08	Depositor EDS
% Data completeness (in resolution range)	100.0 (72.52-2.08) 100.0 (72.52-2.08)	Depositor EDS
R_{merge}	0.08	Depositor
R_{sym}	0.08	Depositor
$\langle I/\sigma(I) \rangle$ ¹	3.66 (at 2.08 Å)	Xtriage
Refinement program	REFMAC	Depositor
R, R_{free}	0.197 , 0.234 0.198 , 0.235	Depositor DCC
R_{free} test set	2667 reflections (5.06%)	wwPDB-VP
Wilson B-factor (Å ²)	29.9	Xtriage
Anisotropy	0.689	Xtriage
Bulk solvent k_{sol} (e/Å ³), B_{sol} (Å ²)	0.35 , 44.9	EDS
L-test for twinning ²	$\langle L \rangle = 0.43$, $\langle L^2 \rangle = 0.25$	Xtriage
Estimated twinning fraction	No twinning to report.	Xtriage
F_o, F_c correlation	0.94	EDS
Total number of atoms	5361	wwPDB-VP
Average B, all atoms (Å ²)	33.0	wwPDB-VP

Xtriage's analysis on translational NCS is as follows: *The largest off-origin peak in the Patterson function is 3.97% of the height of the origin peak. No significant pseudotranslation is detected.*

¹Intensities estimated from amplitudes.

²Theoretical values of $\langle |L| \rangle$, $\langle L^2 \rangle$ for acentric reflections are 0.5, 0.333 respectively for untwinned datasets, and 0.375, 0.2 for perfectly twinned datasets.

5 Model quality

5.1 Standard geometry

Bond lengths and bond angles in the following residue types are not validated in this section: FA0

The Z score for a bond length (or angle) is the number of standard deviations the observed value is removed from the expected value. A bond length (or angle) with $|Z| > 5$ is considered an outlier worth inspection. RMSZ is the root-mean-square of all Z scores of the bond lengths (or angles).

Mol	Chain	Bond lengths		Bond angles	
		RMSZ	# $ Z > 5$	RMSZ	# $ Z > 5$
1	A	0.74	0/2583	0.74	2/3522 (0.1%)
1	B	0.69	0/2562	0.76	3/3495 (0.1%)
All	All	0.72	0/5145	0.75	5/7017 (0.1%)

There are no bond length outliers.

All (5) bond angle outliers are listed below:

Mol	Chain	Res	Type	Atoms	Z	Observed(°)	Ideal(°)
1	B	146	GLY	N-CA-C	12.75	144.99	113.10
1	A	263	ARG	NE-CZ-NH2	-5.58	117.51	120.30
1	B	362	ARG	NE-CZ-NH2	-5.52	117.54	120.30
1	A	362	ARG	NE-CZ-NH1	5.39	123.00	120.30
1	B	362	ARG	NE-CZ-NH1	5.10	122.85	120.30

There are no chirality outliers.

There are no planarity outliers.

5.2 Too-close contacts

In the following table, the Non-H and H(model) columns list the number of non-hydrogen atoms and hydrogen atoms in the chain respectively. The H(added) column lists the number of hydrogen atoms added and optimized by MolProbity. The Clashes column lists the number of clashes within the asymmetric unit, whereas Symm-Clashes lists symmetry related clashes.

Mol	Chain	Non-H	H(model)	H(added)	Clashes	Symm-Clashes
1	A	2533	0	2531	41	0
1	B	2512	0	2511	31	0
2	A	11	0	5	0	0
2	B	11	0	5	1	0

Continued on next page...

Continued from previous page...

Mol	Chain	Non-H	H(model)	H(added)	Clashes	Symm-Clashes
3	A	160	0	0	4	0
3	B	134	0	0	4	0
All	All	5361	0	5052	72	0

The all-atom clashscore is defined as the number of clashes found per 1000 atoms (including hydrogen atoms). The all-atom clashscore for this structure is 7.

All (72) close contacts within the same asymmetric unit are listed below, sorted by their clash magnitude.

Atom-1	Atom-2	Interatomic distance (Å)	Clash overlap (Å)
1:A:290:ALA:CB	1:A:291:GLY:HA2	1.73	1.15
1:A:290:ALA:HB1	1:A:291:GLY:CA	1.79	1.11
1:A:49:MET:HE2	1:A:82:LEU:HD22	1.18	1.09
1:A:49:MET:CE	1:A:82:LEU:HD22	1.86	1.05
1:B:143:SER:HB3	1:B:193:ARG:NH1	1.84	0.92
1:A:49:MET:HE2	1:A:82:LEU:CD2	1.99	0.92
1:A:117:ASN:ND2	1:A:290:ALA:HB3	1.87	0.88
1:A:290:ALA:HB1	1:A:291:GLY:HA2	0.89	0.83
1:A:140:ALA:HB2	1:A:145:SER:O	1.83	0.79
1:A:263:ARG:HD3	1:A:336:TRP:CZ3	2.21	0.74
1:A:140:ALA:O	1:A:141:ALA:HB2	1.86	0.74
1:B:335:GLU:H	1:B:335:GLU:CD	1.91	0.73
1:A:143:SER:OG	1:A:144:LEU:N	2.20	0.72
1:B:72:LYS:O	1:B:73:ALA:HB3	1.91	0.70
1:A:263:ARG:HD2	3:A:717:HOH:O	1.93	0.68
1:B:144:LEU:C	1:B:144:LEU:HD22	2.17	0.65
1:A:140:ALA:O	1:A:141:ALA:CB	2.45	0.64
1:B:72:LYS:O	1:B:73:ALA:CB	2.46	0.64
1:A:238:ARG:HA	3:A:727:HOH:O	1.97	0.64
1:A:289:LEU:O	1:A:290:ALA:O	2.16	0.63
1:B:200:THR:H	1:B:203:ASN:ND2	1.98	0.62
1:B:179:ALA:HB3	1:B:180:PRO:HD3	1.83	0.60
1:B:183:HIS:HD2	3:B:703:HOH:O	1.84	0.59
1:B:224:ALA:HB2	1:B:245:HIS:NE2	2.18	0.59
1:A:200:THR:H	1:A:203:ASN:ND2	2.00	0.59
1:B:164:LEU:HG	3:B:790:HOH:O	2.02	0.58
1:A:290:ALA:CB	1:A:291:GLY:CA	2.52	0.57
1:B:97:THR:HB	1:B:166:ALA:HB1	1.86	0.57
1:B:220:GLY:HA3	1:B:251:ASP:O	2.06	0.56
1:B:139:ARG:NH1	1:B:152:GLU:OE1	2.37	0.55
1:B:144:LEU:HD13	1:B:145:SER:OG	2.08	0.54

Continued on next page...

Continued from previous page...

Atom-1	Atom-2	Interatomic distance (Å)	Clash overlap (Å)
1:A:72:LYS:O	1:A:73:ALA:HB3	2.08	0.53
1:A:183:HIS:HD2	3:A:705:HOH:O	1.91	0.53
1:A:238:ARG:HG3	3:A:843:HOH:O	2.08	0.52
1:B:143:SER:O	2:B:601:FA0:H3	2.09	0.52
1:A:140:ALA:CB	1:A:145:SER:O	2.55	0.52
1:A:116:VAL:HG11	1:A:147:GLY:N	2.25	0.52
1:B:25:PRO:HA	1:B:29:GLN:OE1	2.12	0.50
1:A:204:LEU:HD11	1:A:226:LEU:HD22	1.94	0.49
1:A:72:LYS:O	1:A:73:ALA:CB	2.60	0.48
1:A:345[B]:ARG:HG2	1:A:345[B]:ARG:HH11	1.78	0.47
1:B:200:THR:H	1:B:203:ASN:HD22	1.60	0.47
1:B:143:SER:HA	1:B:144:LEU:HA	1.64	0.47
1:A:52:ILE:HG12	1:A:62:ILE:HG12	1.96	0.46
1:B:224:ALA:HB2	1:B:245:HIS:CE1	2.51	0.46
1:B:144:LEU:HD13	1:B:145:SER:H	1.81	0.46
1:A:113:VAL:O	1:A:114:ASN:HB3	2.16	0.46
1:B:144:LEU:HD13	1:B:145:SER:N	2.31	0.46
1:B:214:PRO:HD2	3:B:816:HOH:O	2.15	0.46
1:A:144:LEU:HG	1:A:292:GLY:C	2.36	0.45
1:B:138:ASN:H	1:B:146:GLY:HA2	1.79	0.45
1:A:289:LEU:O	1:A:290:ALA:C	2.54	0.45
1:B:103:VAL:HG12	1:B:216:ALA:HB3	1.97	0.45
1:B:72:LYS:HB3	1:B:72:LYS:HE3	1.84	0.44
1:A:345[B]:ARG:NH1	1:A:345[B]:ARG:HG2	2.33	0.43
1:A:105:VAL:O	1:A:135:LYS:NZ	2.51	0.43
1:A:121:MET:HG3	1:A:301:VAL:HG22	2.00	0.43
1:A:121:MET:CG	1:A:301:VAL:HG22	2.49	0.42
1:A:140:ALA:CB	1:A:145:SER:HB3	2.50	0.42
1:A:332:SER:O	1:A:332:SER:OG	2.26	0.42
1:A:111:ASP:HA	1:A:112:GLY:HA2	1.74	0.42
1:A:191:ALA:O	1:A:195:GLU:HG3	2.20	0.42
1:A:235:ALA:O	1:A:267:GLY:HA2	2.20	0.42
1:B:96:ASP:HA	3:B:778:HOH:O	2.20	0.41
1:B:342[B]:GLU:HA	1:B:342[B]:GLU:OE2	2.19	0.41
1:B:244:VAL:HG12	1:B:261:ILE:HG12	2.02	0.41
1:A:73:ALA:HA	1:A:74:PRO:HD2	1.92	0.41
1:B:335:GLU:N	1:B:335:GLU:CD	2.69	0.41
1:A:93:LEU:HD22	1:A:98:VAL:HG22	2.02	0.41
1:B:121:MET:CG	1:B:301:VAL:HG22	2.50	0.41
1:A:113:VAL:HG12	1:A:114:ASN:N	2.36	0.40
1:B:143:SER:HB3	1:B:193:ARG:CZ	2.50	0.40

There are no symmetry-related clashes.

5.3 Torsion angles [i](#)

5.3.1 Protein backbone [i](#)

In the following table, the Percentiles column shows the percent Ramachandran outliers of the chain as a percentile score with respect to all X-ray entries followed by that with respect to entries of similar resolution.

The Analysed column shows the number of residues for which the backbone conformation was analysed, and the total number of residues.

Mol	Chain	Analysed	Favoured	Allowed	Outliers	Percentiles	
1	A	345/378 (91%)	332 (96%)	11 (3%)	2 (1%)	25	20
1	B	343/378 (91%)	330 (96%)	11 (3%)	2 (1%)	25	20
All	All	688/756 (91%)	662 (96%)	22 (3%)	4 (1%)	25	20

All (4) Ramachandran outliers are listed below:

Mol	Chain	Res	Type
1	A	290	ALA
1	A	73	ALA
1	B	73	ALA
1	B	146	GLY

5.3.2 Protein sidechains [i](#)

In the following table, the Percentiles column shows the percent sidechain outliers of the chain as a percentile score with respect to all X-ray entries followed by that with respect to entries of similar resolution.

The Analysed column shows the number of residues for which the sidechain conformation was analysed, and the total number of residues.

Mol	Chain	Analysed	Rotameric	Outliers	Percentiles	
1	A	246/264 (93%)	242 (98%)	4 (2%)	62	67
1	B	244/264 (92%)	235 (96%)	9 (4%)	34	34
All	All	490/528 (93%)	477 (97%)	13 (3%)	44	47

All (13) residues with a non-rotameric sidechain are listed below:

Mol	Chain	Res	Type
1	A	37	ASN
1	A	218	LEU
1	A	287	ASP
1	A	331	SER
1	B	117	ASN
1	B	143	SER
1	B	144	LEU
1	B	199	PRO
1	B	218	LEU
1	B	255	THR
1	B	260	THR
1	B	268	SER
1	B	335	GLU

Some sidechains can be flipped to improve hydrogen bonding and reduce clashes. All (7) such sidechains are listed below:

Mol	Chain	Res	Type
1	A	56	ASN
1	A	183	HIS
1	A	203	ASN
1	B	56	ASN
1	B	183	HIS
1	B	188	HIS
1	B	203	ASN

5.3.3 RNA [i](#)

There are no RNA molecules in this entry.

5.4 Non-standard residues in protein, DNA, RNA chains [i](#)

There are no non-standard protein/DNA/RNA residues in this entry.

5.5 Carbohydrates [i](#)

There are no carbohydrates in this entry.

5.6 Ligand geometry [i](#)

2 ligands are modelled in this entry.

In the following table, the Counts columns list the number of bonds (or angles) for which Mogul statistics could be retrieved, the number of bonds (or angles) that are observed in the model and the number of bonds (or angles) that are defined in the Chemical Component Dictionary. The Link column lists molecule types, if any, to which the group is linked. The Z score for a bond length (or angle) is the number of standard deviations the observed value is removed from the expected value. A bond length (or angle) with $|Z| > 2$ is considered an outlier worth inspection. RMSZ is the root-mean-square of all Z scores of the bond lengths (or angles).

Mol	Type	Chain	Res	Link	Bond lengths			Bond angles		
					Counts	RMSZ	# Z > 2	Counts	RMSZ	# Z > 2
2	FA0	B	601	-	9,11,11	2.66	1 (11%)	10,15,15	1.50	2 (20%)
2	FA0	A	601	-	9,11,11	2.54	1 (11%)	10,15,15	1.05	1 (10%)

In the following table, the Chirals column lists the number of chiral outliers, the number of chiral centers analysed, the number of these observed in the model and the number defined in the Chemical Component Dictionary. Similar counts are reported in the Torsion and Rings columns. '-' means no outliers of that kind were identified.

Mol	Type	Chain	Res	Link	Chirals	Torsions	Rings
2	FA0	B	601	-	-	0/0/4/4	0/1/1/1
2	FA0	A	601	-	-	0/0/4/4	0/1/1/1

All (2) bond length outliers are listed below:

Mol	Chain	Res	Type	Atoms	Z	Observed(Å)	Ideal(Å)
2	B	601	FA0	CAD-CAB	7.76	1.54	1.47
2	A	601	FA0	CAD-CAB	7.11	1.54	1.47

All (3) bond angle outliers are listed below:

Mol	Chain	Res	Type	Atoms	Z	Observed(°)	Ideal(°)
2	B	601	FA0	CAE-CAD-CAB	-2.74	116.13	120.20
2	B	601	FA0	CAF-CAG-CAI	-2.59	119.92	123.29
2	A	601	FA0	CAF-CAG-CAI	-2.53	120.01	123.29

There are no chirality outliers.

There are no torsion outliers.

There are no ring outliers.

1 monomer is involved in 1 short contact:

Mol	Chain	Res	Type	Clashes	Symm-Clashes
2	B	601	FA0	1	0

5.7 Other polymers [i](#)

There are no such residues in this entry.

5.8 Polymer linkage issues [i](#)

There are no chain breaks in this entry.

6 Fit of model and data [i](#)

6.1 Protein, DNA and RNA chains [i](#)

In the following table, the column labelled ‘#RSRZ> 2’ contains the number (and percentage) of RSRZ outliers, followed by percent RSRZ outliers for the chain as percentile scores relative to all X-ray entries and entries of similar resolution. The OWAB column contains the minimum, median, 95th percentile and maximum values of the occupancy-weighted average B-factor per residue. The column labelled ‘Q< 0.9’ lists the number of (and percentage) of residues with an average occupancy less than 0.9.

Mol	Chain	Analysed	<RSRZ>	#RSRZ>2	OWAB(Å ²)	Q<0.9
1	A	346/378 (91%)	-0.04	9 (2%) 56 60	17, 30, 53, 69	0
1	B	345/378 (91%)	0.01	9 (2%) 56 60	20, 31, 58, 63	0
All	All	691/756 (91%)	-0.02	18 (2%) 56 60	17, 30, 56, 69	0

All (18) RSRZ outliers are listed below:

Mol	Chain	Res	Type	RSRZ
1	A	141	ALA	8.5
1	A	145	SER	7.6
1	B	145	SER	6.0
1	B	144	LEU	5.3
1	B	109	GLY	4.4
1	B	143	SER	4.0
1	A	333	ARG	4.0
1	A	111	ASP	3.9
1	A	24	VAL	3.4
1	B	140	ALA	3.3
1	B	108	THR	3.3
1	A	143	SER	3.1
1	B	115	THR	2.4
1	B	146	GLY	2.2
1	A	112	GLY	2.2
1	A	290	ALA	2.1
1	B	223	PHE	2.1
1	A	287	ASP	2.1

6.2 Non-standard residues in protein, DNA, RNA chains [i](#)

There are no non-standard protein/DNA/RNA residues in this entry.

6.3 Carbohydrates [i](#)

There are no carbohydrates in this entry.

6.4 Ligands [i](#)

In the following table, the Atoms column lists the number of modelled atoms in the group and the number defined in the chemical component dictionary. The B-factors column lists the minimum, median, 95th percentile and maximum values of B factors of atoms in the group. The column labelled 'Q< 0.9' lists the number of atoms with occupancy less than 0.9.

Mol	Type	Chain	Res	Atoms	RSCC	RSR	B-factors(\AA^2)	Q<0.9
2	FA0	B	601	11/11	0.89	0.12	37,39,44,46	0
2	FA0	A	601	11/11	0.92	0.17	52,52,53,55	0

6.5 Other polymers [i](#)

There are no such residues in this entry.