



Full wwPDB X-ray Structure Validation Report ⓘ

Jan 26, 2022 – 12:04 PM EST

PDB ID : 7N8M
Title : PptT PAP(CoA) 8978B complex
Authors : Mosior, J.W.; Sacchettini, J.C.; TB Structural Genomics Consortium (TB-SGC)
Deposited on : 2021-06-15
Resolution : 1.57 Å(reported)

This is a Full wwPDB X-ray Structure Validation Report for a publicly released PDB entry.

We welcome your comments at validation@mail.wwpdb.org

A user guide is available at

<https://www.wwpdb.org/validation/2017/XrayValidationReportHelp>

with specific help available everywhere you see the ⓘ symbol.

The following versions of software and data (see [references ⓘ](#)) were used in the production of this report:

MolProbity	:	4.02b-467
Mogul	:	1.8.5 (274361), CSD as541be (2020)
Xtriage (Phenix)	:	1.13
EDS	:	2.26
buster-report	:	1.1.7 (2018)
Percentile statistics	:	20191225.v01 (using entries in the PDB archive December 25th 2019)
Refmac	:	5.8.0158
CCP4	:	7.0.044 (Gargrove)
Ideal geometry (proteins)	:	Engh & Huber (2001)
Ideal geometry (DNA, RNA)	:	Parkinson et al. (1996)
Validation Pipeline (wwPDB-VP)	:	2.26

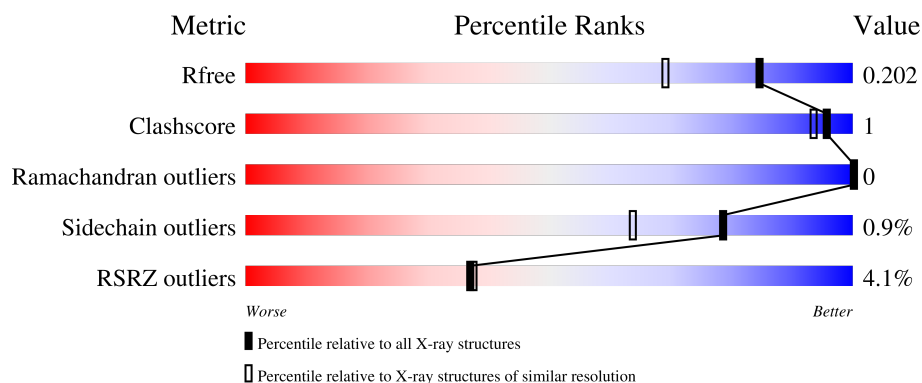
1 Overall quality at a glance

The following experimental techniques were used to determine the structure:

X-RAY DIFFRACTION

The reported resolution of this entry is 1.57 Å.

Percentile scores (ranging between 0-100) for global validation metrics of the entry are shown in the following graphic. The table shows the number of entries on which the scores are based.



Metric	Whole archive (#Entries)	Similar resolution (#Entries, resolution range(Å))
R_{free}	130704	5534 (1.60-1.56)
Clashscore	141614	5861 (1.60-1.56)
Ramachandran outliers	138981	5708 (1.60-1.56)
Sidechain outliers	138945	5703 (1.60-1.56)
RSRZ outliers	127900	5431 (1.60-1.56)

The table below summarises the geometric issues observed across the polymeric chains and their fit to the electron density. The red, orange, yellow and green segments of the lower bar indicate the fraction of residues that contain outliers for ≥ 3 , 2, 1 and 0 types of geometric quality criteria respectively. A grey segment represents the fraction of residues that are not modelled. The numeric value for each fraction is indicated below the corresponding segment, with a dot representing fractions $\leq 5\%$. The upper red bar (where present) indicates the fraction of residues that have poor fit to the electron density. The numeric value is given above the bar.

Mol	Chain	Length	Quality of chain
1	A	244	<div> <div>4%</div> <div> <div></div> <div>87%</div> <div>9%</div> </div> </div>
1	B	244	<div> <div>3%</div> <div> <div></div> <div>87%</div> <div>9%</div> </div> </div>

2 Entry composition [i](#)

There are 7 unique types of molecules in this entry. The entry contains 4110 atoms, of which 0 are hydrogens and 0 are deuteriums.

In the tables below, the ZeroOcc column contains the number of atoms modelled with zero occupancy, the AltConf column contains the number of residues with at least one atom in alternate conformation and the Trace column contains the number of residues modelled with at most 2 atoms.

- Molecule 1 is a protein called 4'-phosphopantetheinyl transferase PptT.

Mol	Chain	Residues	Atoms					ZeroOcc	AltConf	Trace
1	A	221	Total	C	N	O	S	0	10	0
			1751	1118	308	316	9			
1	B	223	Total	C	N	O	S	0	8	2
			1749	1112	311	317	9			

There are 34 discrepancies between the modelled and reference sequences:

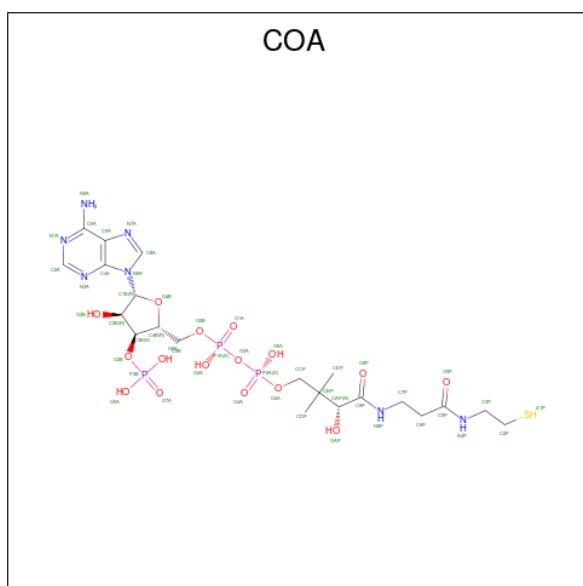
Chain	Residue	Modelled	Actual	Comment	Reference
A	228	ALA	-	expression tag	UNP O33336
A	229	GLY	-	expression tag	UNP O33336
A	230	GLU	-	expression tag	UNP O33336
A	231	ASN	-	expression tag	UNP O33336
A	232	LEU	-	expression tag	UNP O33336
A	233	TYR	-	expression tag	UNP O33336
A	234	PHE	-	expression tag	UNP O33336
A	235	GLN	-	expression tag	UNP O33336
A	236	SER	-	expression tag	UNP O33336
A	237	ALA	-	expression tag	UNP O33336
A	238	GLY	-	expression tag	UNP O33336
A	239	HIS	-	expression tag	UNP O33336
A	240	HIS	-	expression tag	UNP O33336
A	241	HIS	-	expression tag	UNP O33336
A	242	HIS	-	expression tag	UNP O33336
A	243	HIS	-	expression tag	UNP O33336
A	244	HIS	-	expression tag	UNP O33336
B	228	ALA	-	expression tag	UNP O33336
B	229	GLY	-	expression tag	UNP O33336
B	230	GLU	-	expression tag	UNP O33336
B	231	ASN	-	expression tag	UNP O33336
B	232	LEU	-	expression tag	UNP O33336
B	233	TYR	-	expression tag	UNP O33336
B	234	PHE	-	expression tag	UNP O33336
B	235	GLN	-	expression tag	UNP O33336

Continued on next page...

Continued from previous page...

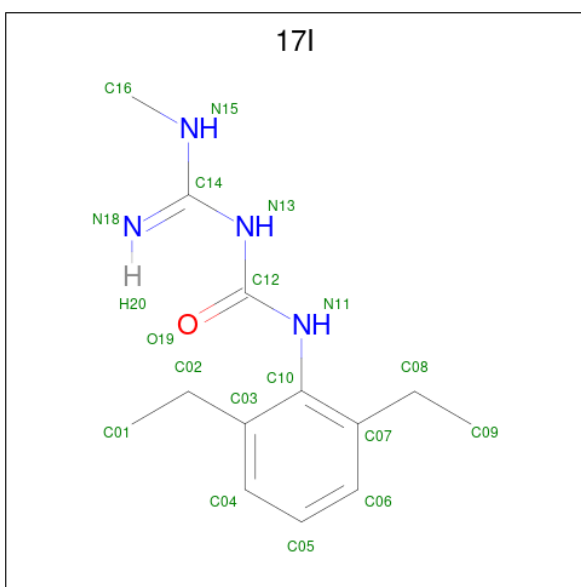
Chain	Residue	Modelled	Actual	Comment	Reference
B	236	SER	-	expression tag	UNP O33336
B	237	ALA	-	expression tag	UNP O33336
B	238	GLY	-	expression tag	UNP O33336
B	239	HIS	-	expression tag	UNP O33336
B	240	HIS	-	expression tag	UNP O33336
B	241	HIS	-	expression tag	UNP O33336
B	242	HIS	-	expression tag	UNP O33336
B	243	HIS	-	expression tag	UNP O33336
B	244	HIS	-	expression tag	UNP O33336

- Molecule 2 is COENZYME A (three-letter code: COA) (formula: $C_{21}H_{36}N_7O_{16}P_3S$).



Mol	Chain	Residues	Atoms					ZeroOcc	AltConf
2	A	1	Total	C	N	O	P	0	0
			27	10	5	10	2		
2	B	1	Total	C	N	O	P	0	0
			27	10	5	10	2		

- Molecule 3 is N-(2,6-diethylphenyl)-N'-(N-methylcarbamimidoyl)urea (three-letter code: 17I) (formula: $C_{13}H_{20}N_4O$) (labeled as "Ligand of Interest" by depositor).



Mol	Chain	Residues	Atoms				ZeroOcc	AltConf
3	A	1	Total	C	N	O	0	0
			18	13	4	1		
3	B	1	Total	C	N	O	0	0
			18	13	4	1		
3	B	1	Total	C	N	O	0	1
			36	26	8	2		

- Molecule 4 is MAGNESIUM ION (three-letter code: MG) (formula: Mg).

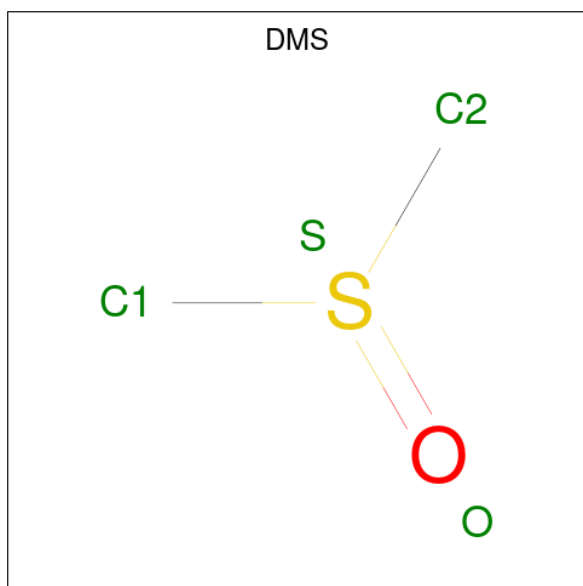
Mol	Chain	Residues	Atoms		ZeroOcc	AltConf
4	A	3	Total	Mg	0	0
			3	3		
4	B	4	Total	Mg	0	0
			4	4		

- Molecule 5 is GLYCEROL (three-letter code: GOL) (formula: C₃H₈O₃).



Mol	Chain	Residues	Atoms			ZeroOcc	AltConf
5	A	1	Total	C	O	0	0
			6	3	3		

- Molecule 6 is DIMETHYL SULFOXIDE (three-letter code: DMS) (formula: C_2H_6OS).



Mol	Chain	Residues	Atoms				ZeroOcc	AltConf
6	A	1	Total	C	O	S	0	0
			4	2	1	1		
6	A	1	Total	C	O	S	0	0
			4	2	1	1		
6	A	1	Total	C	O	S	0	0
			4	2	1	1		

Continued on next page...

Continued from previous page...

Mol	Chain	Residues	Atoms				ZeroOcc	AltConf
6	B	1	Total	C	O	S	0	0
			4	2	1	1		

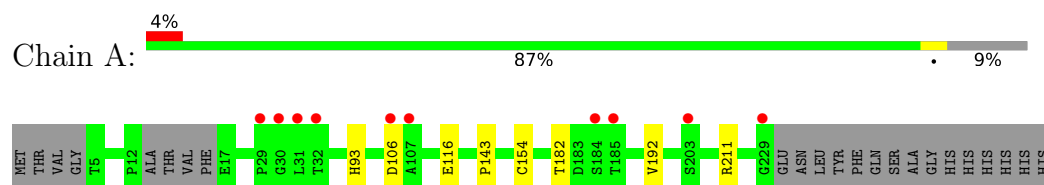
- Molecule 7 is water.

Mol	Chain	Residues	Atoms		ZeroOcc	AltConf
7	A	220	Total	O	0	0
			220	220		
7	B	235	Total	O	0	0
			235	235		

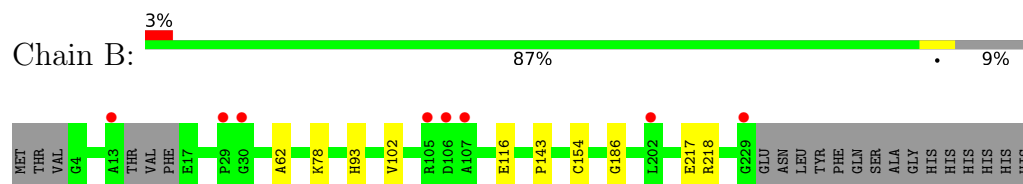
3 Residue-property plots [i](#)

These plots are drawn for all protein, RNA, DNA and oligosaccharide chains in the entry. The first graphic for a chain summarises the proportions of the various outlier classes displayed in the second graphic. The second graphic shows the sequence view annotated by issues in geometry and electron density. Residues are color-coded according to the number of geometric quality criteria for which they contain at least one outlier: green = 0, yellow = 1, orange = 2 and red = 3 or more. A red dot above a residue indicates a poor fit to the electron density ($RSRZ > 2$). Stretches of 2 or more consecutive residues without any outlier are shown as a green connector. Residues present in the sample, but not in the model, are shown in grey.

- Molecule 1: 4'-phosphopantetheinyl transferase PptT



- Molecule 1: 4'-phosphopantetheinyl transferase PptT



4 Data and refinement statistics

Property	Value	Source
Space group	C 1 2 1	Depositor
Cell constants a, b, c, α , β , γ	134.76Å 63.71Å 79.67Å 90.00° 123.33° 90.00°	Depositor
Resolution (Å)	39.79 – 1.57 39.79 – 1.57	Depositor EDS
% Data completeness (in resolution range)	99.6 (39.79-1.57) 99.6 (39.79-1.57)	Depositor EDS
R_{merge}	(Not available)	Depositor
R_{sym}	(Not available)	Depositor
$\langle I/\sigma(I) \rangle$ ¹	2.08 (at 1.57Å)	Xtriage
Refinement program	PHENIX dev_3126	Depositor
R, R_{free}	0.172 , 0.202 0.172 , 0.202	Depositor DCC
R_{free} test set	2855 reflections (3.64%)	wwPDB-VP
Wilson B-factor (Å ²)	22.7	Xtriage
Anisotropy	0.214	Xtriage
Bulk solvent k_{sol} (e/Å ³), B_{sol} (Å ²)	0.38 , 52.7	EDS
L-test for twinning ²	$\langle L \rangle = 0.48$, $\langle L^2 \rangle = 0.31$	Xtriage
Estimated twinning fraction	0.054 for -h-2*k,l	Xtriage
F_o, F_c correlation	0.97	EDS
Total number of atoms	4110	wwPDB-VP
Average B, all atoms (Å ²)	28.0	wwPDB-VP

Xtriage's analysis on translational NCS is as follows: *The largest off-origin peak in the Patterson function is 5.73% of the height of the origin peak. No significant pseudotranslation is detected.*

¹Intensities estimated from amplitudes.

²Theoretical values of $\langle |L| \rangle$, $\langle L^2 \rangle$ for acentric reflections are 0.5, 0.333 respectively for untwinned datasets, and 0.375, 0.2 for perfectly twinned datasets.

5 Model quality [i](#)

5.1 Standard geometry [i](#)

Bond lengths and bond angles in the following residue types are not validated in this section: MG, COA, 17I, DMS, GOL

The Z score for a bond length (or angle) is the number of standard deviations the observed value is removed from the expected value. A bond length (or angle) with $|Z| > 5$ is considered an outlier worth inspection. RMSZ is the root-mean-square of all Z scores of the bond lengths (or angles).

Mol	Chain	Bond lengths		Bond angles	
		RMSZ	# Z >5	RMSZ	# Z >5
1	A	0.36	0/1795	0.57	0/2450
1	B	0.38	0/1793	0.62	0/2448
All	All	0.37	0/3588	0.60	0/4898

There are no bond length outliers.

There are no bond angle outliers.

There are no chirality outliers.

There are no planarity outliers.

5.2 Too-close contacts [i](#)

In the following table, the Non-H and H(model) columns list the number of non-hydrogen atoms and hydrogen atoms in the chain respectively. The H(added) column lists the number of hydrogen atoms added and optimized by MolProbity. The Clashes column lists the number of clashes within the asymmetric unit, whereas Symm-Clashes lists symmetry-related clashes.

Mol	Chain	Non-H	H(model)	H(added)	Clashes	Symm-Clashes
1	A	1751	0	1738	3	0
1	B	1749	0	1738	5	0
2	A	27	0	11	0	0
2	B	27	0	11	0	0
3	A	18	0	0	0	0
3	B	54	0	0	0	0
4	A	3	0	0	0	0
4	B	4	0	0	0	0
5	A	6	0	8	0	0
6	A	12	0	18	0	0
6	B	4	0	6	0	0

Continued on next page...

Continued from previous page...

Mol	Chain	Non-H	H(model)	H(added)	Clashes	Symm-Clashes
7	A	220	0	0	0	0
7	B	235	0	0	1	0
All	All	4110	0	3530	8	0

The all-atom clashscore is defined as the number of clashes found per 1000 atoms (including hydrogen atoms). The all-atom clashscore for this structure is 1.

All (8) close contacts within the same asymmetric unit are listed below, sorted by their clash magnitude.

Atom-1	Atom-2	Interatomic distance (Å)	Clash overlap (Å)
1:B:217:GLU:HG2	1:B:218[A]:ARG:HG3	1.94	0.49
1:A:192:VAL:HG22	1:A:211:ARG:HG2	1.96	0.48
1:B:116:GLU:HB2	1:B:154[B]:CYS:SG	2.53	0.48
1:A:143:PRO:HG3	1:A:182:THR:HG21	1.99	0.44
1:B:143:PRO:HG2	1:B:186:GLY:O	2.18	0.43
1:A:116:GLU:HB2	1:A:154[B]:CYS:SG	2.58	0.42
1:B:62:ALA:HB1	1:B:102:VAL:HG22	2.02	0.42
1:B:78:LYS:NZ	7:B:409:HOH:O	2.52	0.41

There are no symmetry-related clashes.

5.3 Torsion angles

5.3.1 Protein backbone

In the following table, the Percentiles column shows the percent Ramachandran outliers of the chain as a percentile score with respect to all X-ray entries followed by that with respect to entries of similar resolution.

The Analysed column shows the number of residues for which the backbone conformation was analysed, and the total number of residues.

Mol	Chain	Analysed	Favoured	Allowed	Outliers	Percentiles	
1	A	227/244 (93%)	223 (98%)	4 (2%)	0	100	100
1	B	227/244 (93%)	226 (100%)	1 (0%)	0	100	100
All	All	454/488 (93%)	449 (99%)	5 (1%)	0	100	100

There are no Ramachandran outliers to report.

5.3.2 Protein sidechains [i](#)

In the following table, the Percentiles column shows the percent sidechain outliers of the chain as a percentile score with respect to all X-ray entries followed by that with respect to entries of similar resolution.

The Analysed column shows the number of residues for which the sidechain conformation was analysed, and the total number of residues.

Mol	Chain	Analysed	Rotameric	Outliers	Percentiles	
1	A	181/197 (92%)	179 (99%)	2 (1%)	73	55
1	B	183/197 (93%)	182 (100%)	1 (0%)	88	80
All	All	364/394 (92%)	361 (99%)	3 (1%)	78	68

All (3) residues with a non-rotameric sidechain are listed below:

Mol	Chain	Res	Type
1	A	93	HIS
1	A	106	ASP
1	B	93	HIS

Sometimes sidechains can be flipped to improve hydrogen bonding and reduce clashes. There are no such sidechains identified.

5.3.3 RNA [i](#)

There are no RNA molecules in this entry.

5.4 Non-standard residues in protein, DNA, RNA chains [i](#)

There are no non-standard protein/DNA/RNA residues in this entry.

5.5 Carbohydrates [i](#)

There are no monosaccharides in this entry.

5.6 Ligand geometry [i](#)

Of 18 ligands modelled in this entry, 7 are monoatomic - leaving 11 for Mogul analysis.

In the following table, the Counts columns list the number of bonds (or angles) for which Mogul statistics could be retrieved, the number of bonds (or angles) that are observed in the model and

the number of bonds (or angles) that are defined in the Chemical Component Dictionary. The Link column lists molecule types, if any, to which the group is linked. The Z score for a bond length (or angle) is the number of standard deviations the observed value is removed from the expected value. A bond length (or angle) with $|Z| > 2$ is considered an outlier worth inspection. RMSZ is the root-mean-square of all Z scores of the bond lengths (or angles).

Mol	Type	Chain	Res	Link	Bond lengths			Bond angles		
					Counts	RMSZ	# Z > 2	Counts	RMSZ	# Z > 2
2	COA	B	301	4	26,29,50	2.28	7 (26%)	31,45,75	1.26	4 (12%)
6	DMS	A	308	-	3,3,3	0.66	0	3,3,3	0.53	0
3	17I	B	303[B]	-	17,18,18	1.89	3 (17%)	22,23,23	1.83	4 (18%)
5	GOL	A	306	-	5,5,5	0.92	0	5,5,5	0.93	0
3	17I	B	303[A]	-	17,18,18	1.92	3 (17%)	22,23,23	2.10	3 (13%)
6	DMS	B	308	-	3,3,3	0.63	0	3,3,3	0.46	0
6	DMS	A	309	-	3,3,3	0.65	0	3,3,3	0.45	0
2	COA	A	301	4	26,29,50	2.28	6 (23%)	31,45,75	1.30	3 (9%)
6	DMS	A	307	-	3,3,3	0.64	0	3,3,3	0.58	0
3	17I	A	302	-	17,18,18	1.11	1 (5%)	22,23,23	1.22	2 (9%)
3	17I	B	302	-	17,18,18	1.03	0	22,23,23	1.37	2 (9%)

In the following table, the Chirals column lists the number of chiral outliers, the number of chiral centers analysed, the number of these observed in the model and the number defined in the Chemical Component Dictionary. Similar counts are reported in the Torsion and Rings columns. '-' means no outliers of that kind were identified.

Mol	Type	Chain	Res	Link	Chirals	Torsions	Rings
2	COA	B	301	4	-	2/11/31/64	0/3/3/3
3	17I	B	303[B]	-	-	1/13/14/14	0/1/1/1
5	GOL	A	306	-	-	0/4/4/4	-
3	17I	B	303[A]	-	-	2/13/14/14	0/1/1/1
2	COA	A	301	4	-	3/11/31/64	0/3/3/3
3	17I	A	302	-	-	1/13/14/14	0/1/1/1
3	17I	B	302	-	-	3/13/14/14	0/1/1/1

All (20) bond length outliers are listed below:

Mol	Chain	Res	Type	Atoms	Z	Observed(Å)	Ideal(Å)
2	B	301	COA	P3B-O3B	8.46	1.75	1.59
2	A	301	COA	P3B-O3B	8.06	1.74	1.59
2	A	301	COA	O4B-C1B	-4.82	1.34	1.41
3	B	303[A]	17I	C12-N11	4.80	1.47	1.37
3	B	303[B]	17I	C12-N11	4.45	1.46	1.37

Continued on next page...

Continued from previous page...

Mol	Chain	Res	Type	Atoms	Z	Observed(Å)	Ideal(Å)
3	B	303[B]	17I	C12-N13	4.10	1.48	1.39
3	B	303[A]	17I	C12-N13	3.75	1.47	1.39
3	B	303[B]	17I	C14-N15	3.68	1.43	1.34
3	B	303[A]	17I	C14-N15	3.66	1.43	1.34
2	B	301	COA	C2B-C3B	3.24	1.60	1.52
2	A	301	COA	O5B-C5B	-3.08	1.32	1.44
2	B	301	COA	O3B-C3B	-2.95	1.33	1.44
2	A	301	COA	O3B-C3B	-2.89	1.33	1.44
2	A	301	COA	C2B-C3B	2.86	1.59	1.52
2	B	301	COA	O4B-C1B	-2.70	1.37	1.41
2	B	301	COA	O5B-C5B	-2.63	1.34	1.44
3	A	302	17I	C16-N15	2.55	1.50	1.45
2	B	301	COA	C4A-N3A	2.41	1.39	1.35
2	A	301	COA	O2B-C2B	-2.18	1.37	1.43
2	B	301	COA	O2B-C2B	-2.01	1.38	1.43

All (18) bond angle outliers are listed below:

Mol	Chain	Res	Type	Atoms	Z	Observed(°)	Ideal(°)
3	B	303[A]	17I	C10-N11-C12	7.11	132.33	121.82
3	B	303[B]	17I	C10-N11-C12	4.98	129.19	121.82
3	B	302	17I	C07-C10-N11	3.46	124.76	119.16
3	B	303[B]	17I	C07-C10-N11	3.23	124.40	119.16
3	B	303[B]	17I	C14-N13-C12	3.21	130.91	125.42
3	B	302	17I	C03-C10-N11	-3.15	114.06	119.16
3	B	303[A]	17I	C07-C10-N11	3.00	124.01	119.16
2	A	301	COA	C2B-C3B-C4B	-2.97	97.96	103.22
3	B	303[A]	17I	N11-C12-N13	2.95	120.87	114.23
3	A	302	17I	C07-C10-N11	2.81	123.71	119.16
2	B	301	COA	C2B-C3B-C4B	-2.67	98.50	103.22
3	A	302	17I	C03-C10-N11	-2.48	115.14	119.16
3	B	303[B]	17I	N13-C14-N15	2.40	123.12	117.56
2	B	301	COA	O2A-P1A-O5B	-2.29	100.64	106.73
2	B	301	COA	O3A-P1A-O2A	2.26	116.29	107.64
2	A	301	COA	O3B-P3B-O7A	-2.23	100.79	109.39
2	B	301	COA	O9A-P3B-O8A	2.20	116.06	107.64
2	A	301	COA	O2B-C2B-C3B	2.05	116.99	111.17

There are no chirality outliers.

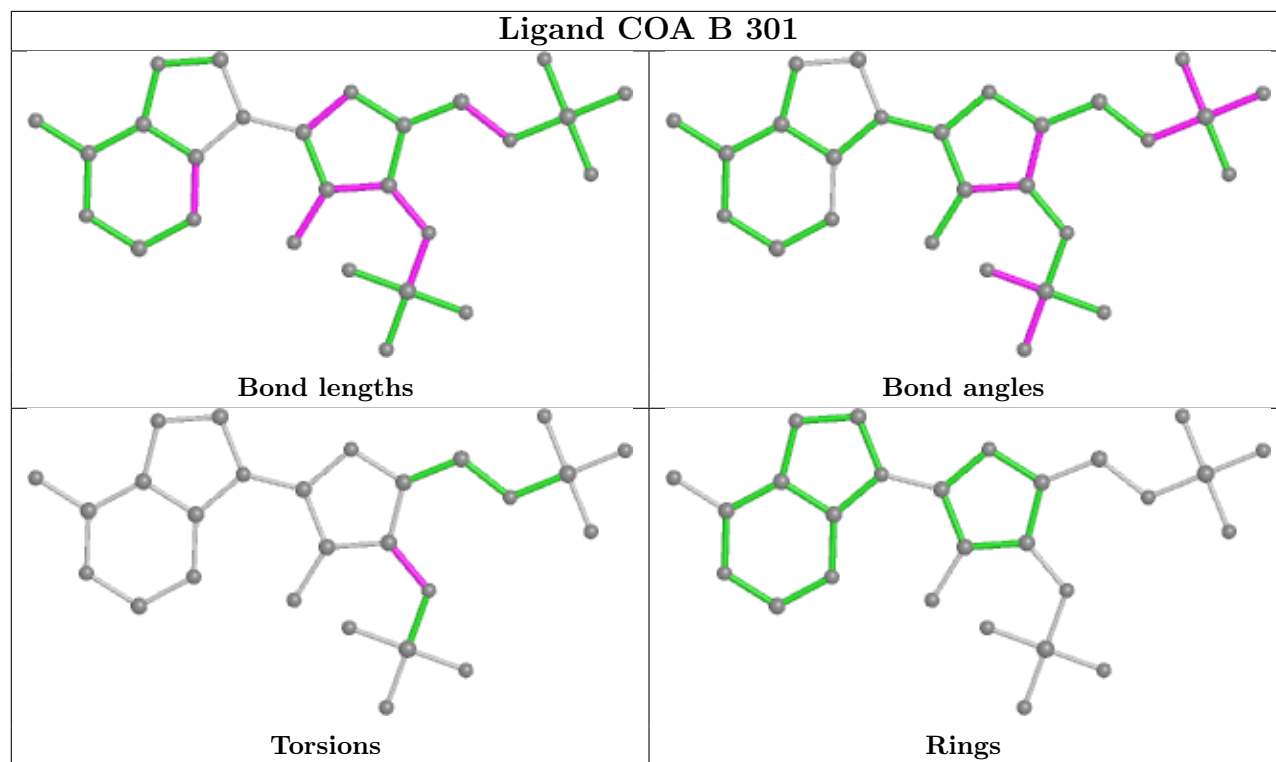
All (12) torsion outliers are listed below:

Mol	Chain	Res	Type	Atoms
3	B	302	17I	C06-C07-C08-C09
3	B	303[A]	17I	O19-C12-N11-C10
3	B	303[A]	17I	N13-C12-N11-C10
3	B	302	17I	C10-C07-C08-C09
2	A	301	COA	C2B-C3B-O3B-P3B
2	B	301	COA	C2B-C3B-O3B-P3B
2	B	301	COA	C4B-C3B-O3B-P3B
2	A	301	COA	C4B-C3B-O3B-P3B
2	A	301	COA	C3B-O3B-P3B-O8A
3	A	302	17I	N18-C14-N13-C12
3	B	302	17I	N18-C14-N13-C12
3	B	303[B]	17I	C06-C07-C08-C09

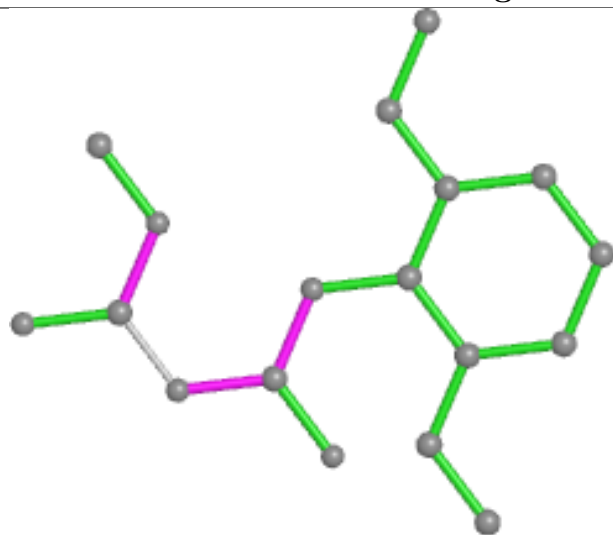
There are no ring outliers.

No monomer is involved in short contacts.

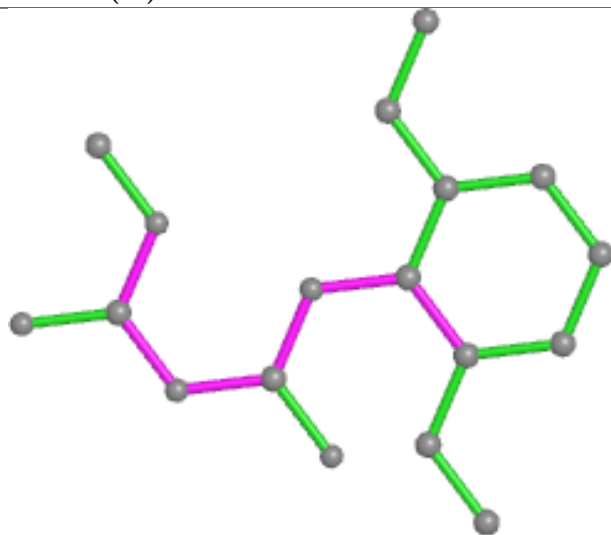
The following is a two-dimensional graphical depiction of Mogul quality analysis of bond lengths, bond angles, torsion angles, and ring geometry for all instances of the Ligand of Interest. In addition, ligands with molecular weight > 250 and outliers as shown on the validation Tables will also be included. For torsion angles, if less than 5% of the Mogul distribution of torsion angles is within 10 degrees of the torsion angle in question, then that torsion angle is considered an outlier. Any bond that is central to one or more torsion angles identified as an outlier by Mogul will be highlighted in the graph. For rings, the root-mean-square deviation (RMSD) between the ring in question and similar rings identified by Mogul is calculated over all ring torsion angles. If the average RMSD is greater than 60 degrees and the minimal RMSD between the ring in question and any Mogul-identified rings is also greater than 60 degrees, then that ring is considered an outlier. The outliers are highlighted in purple. The color gray indicates Mogul did not find sufficient equivalents in the CSD to analyse the geometry.



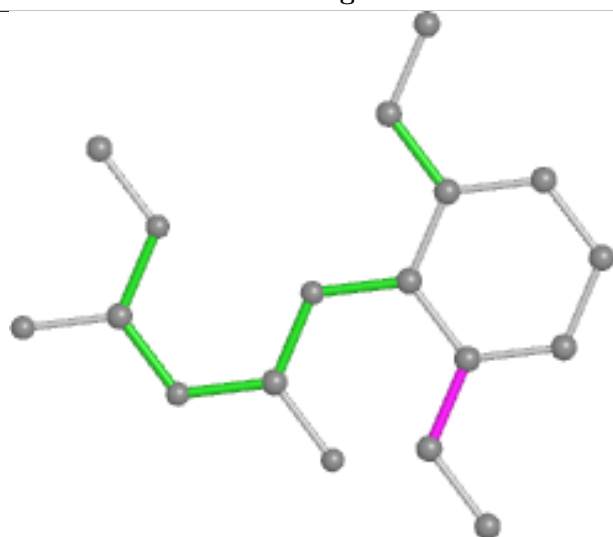
Ligand 17I B 303 (B)



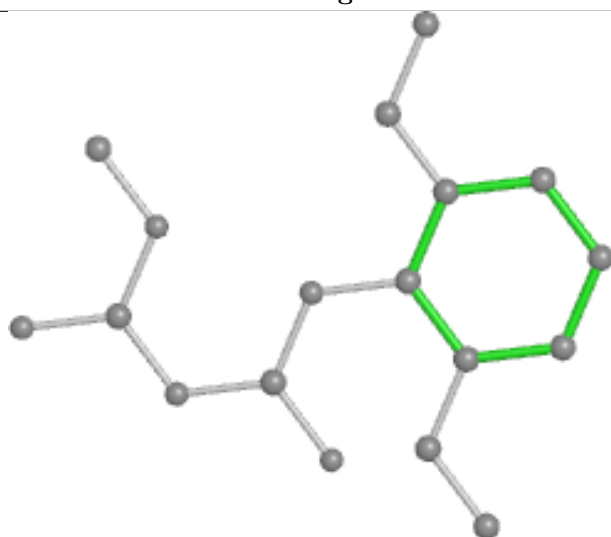
Bond lengths



Bond angles

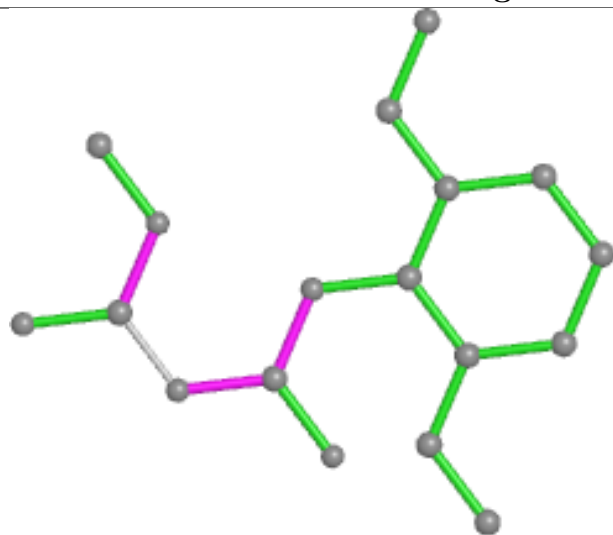


Torsions

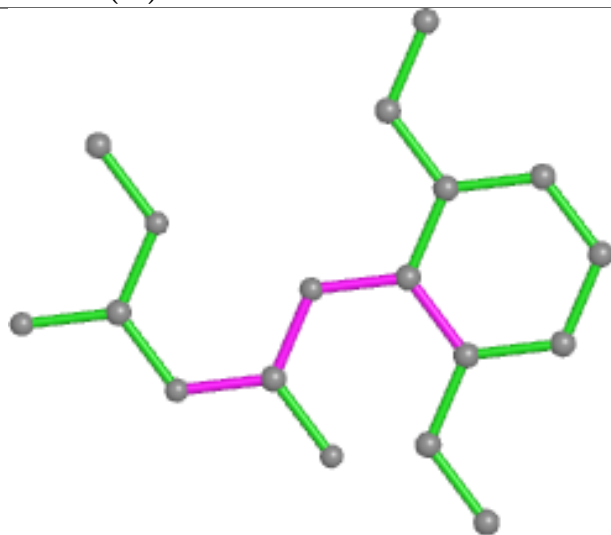


Rings

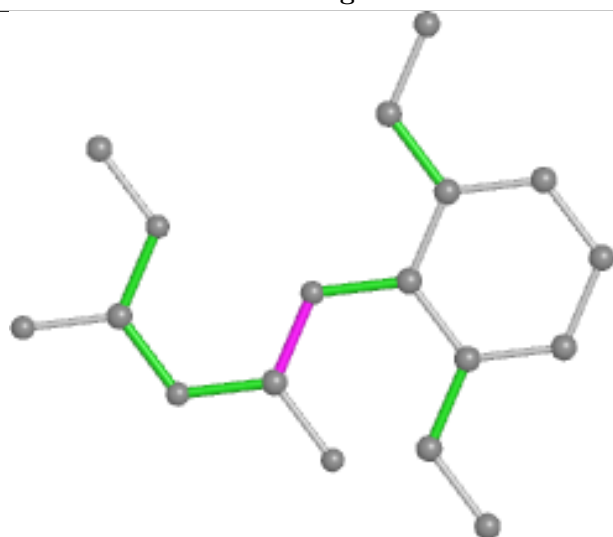
Ligand 17I B 303 (A)



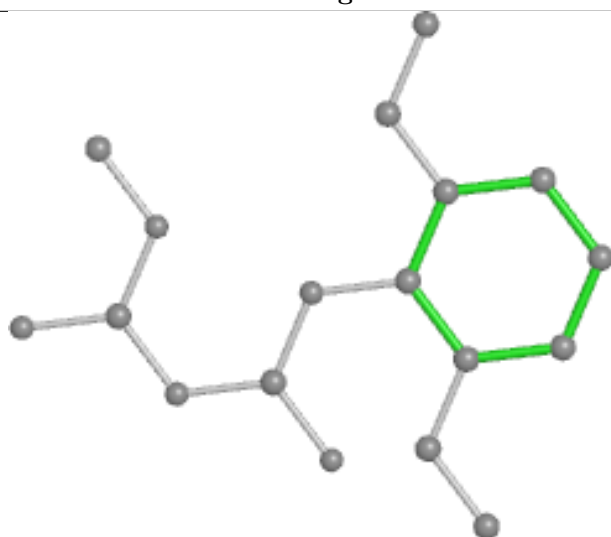
Bond lengths



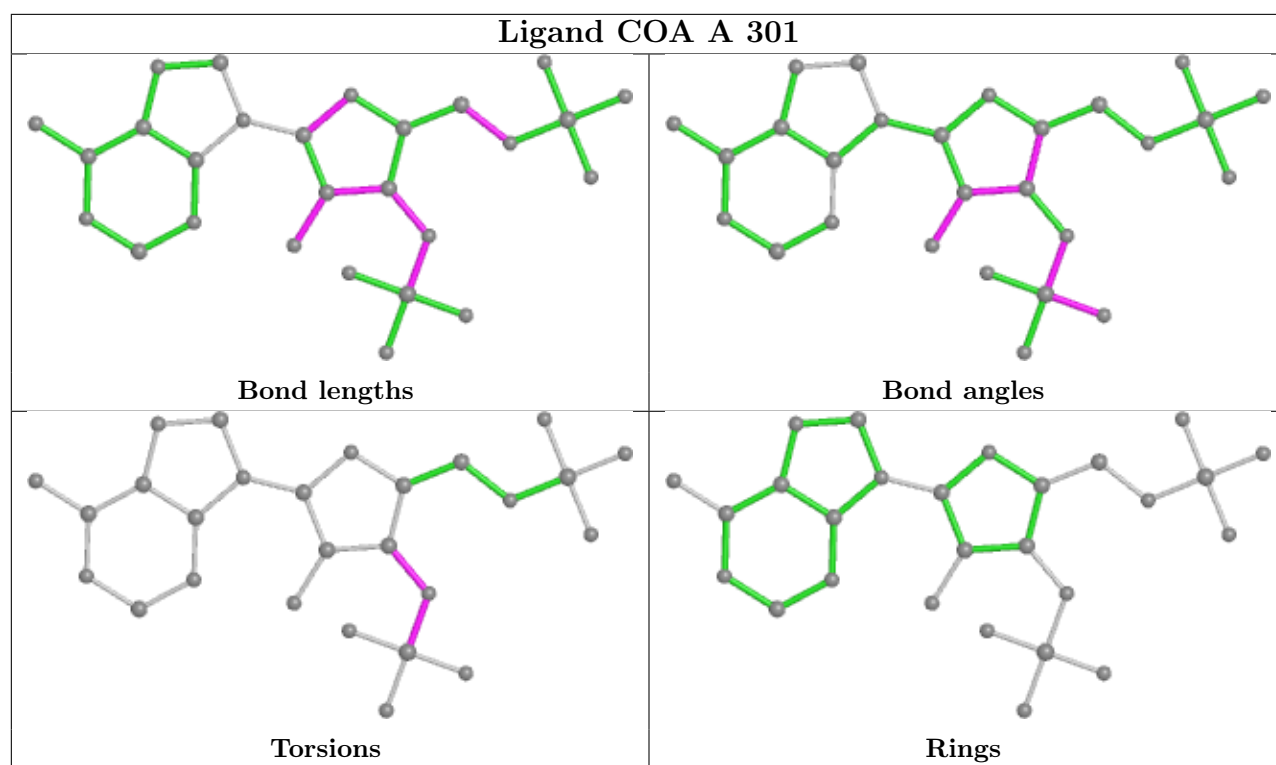
Bond angles



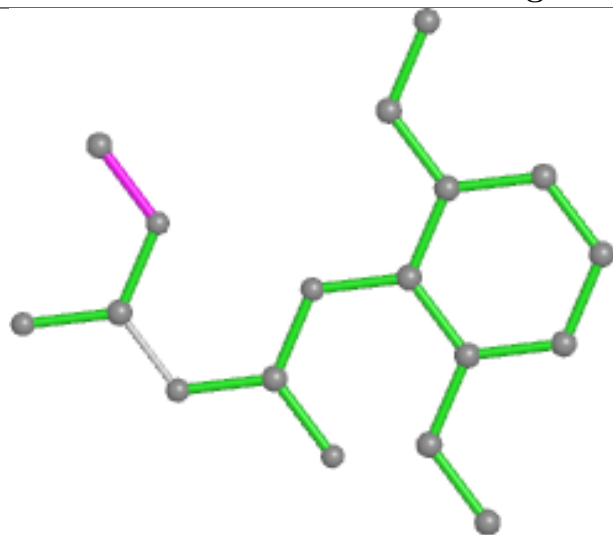
Torsions



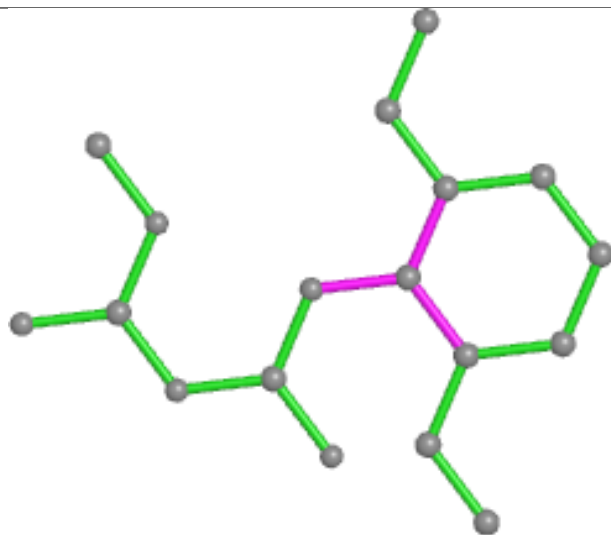
Rings



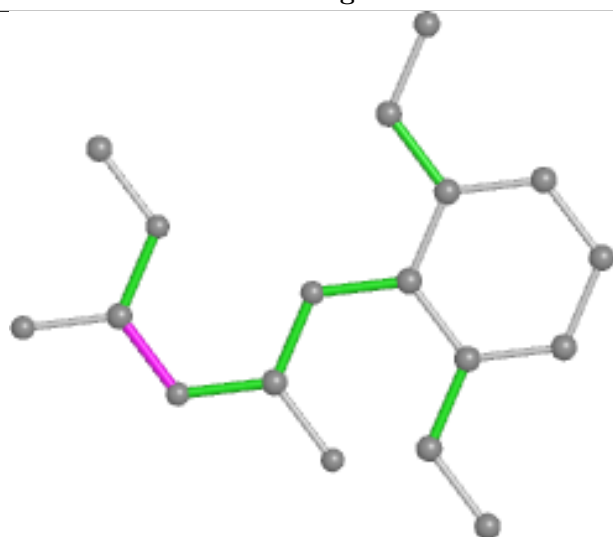
Ligand 17I A 302



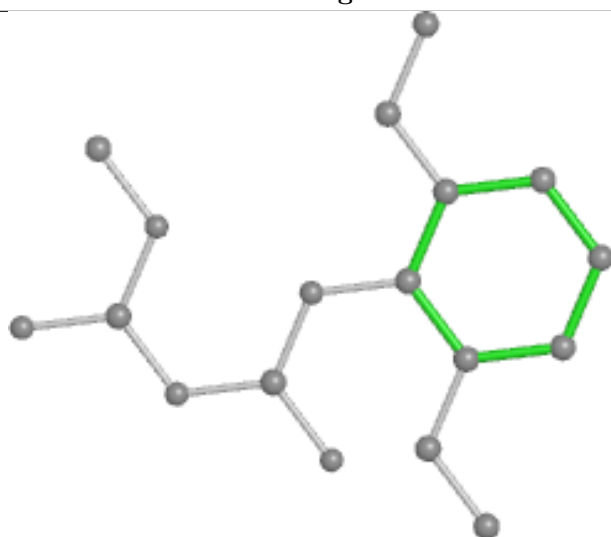
Bond lengths



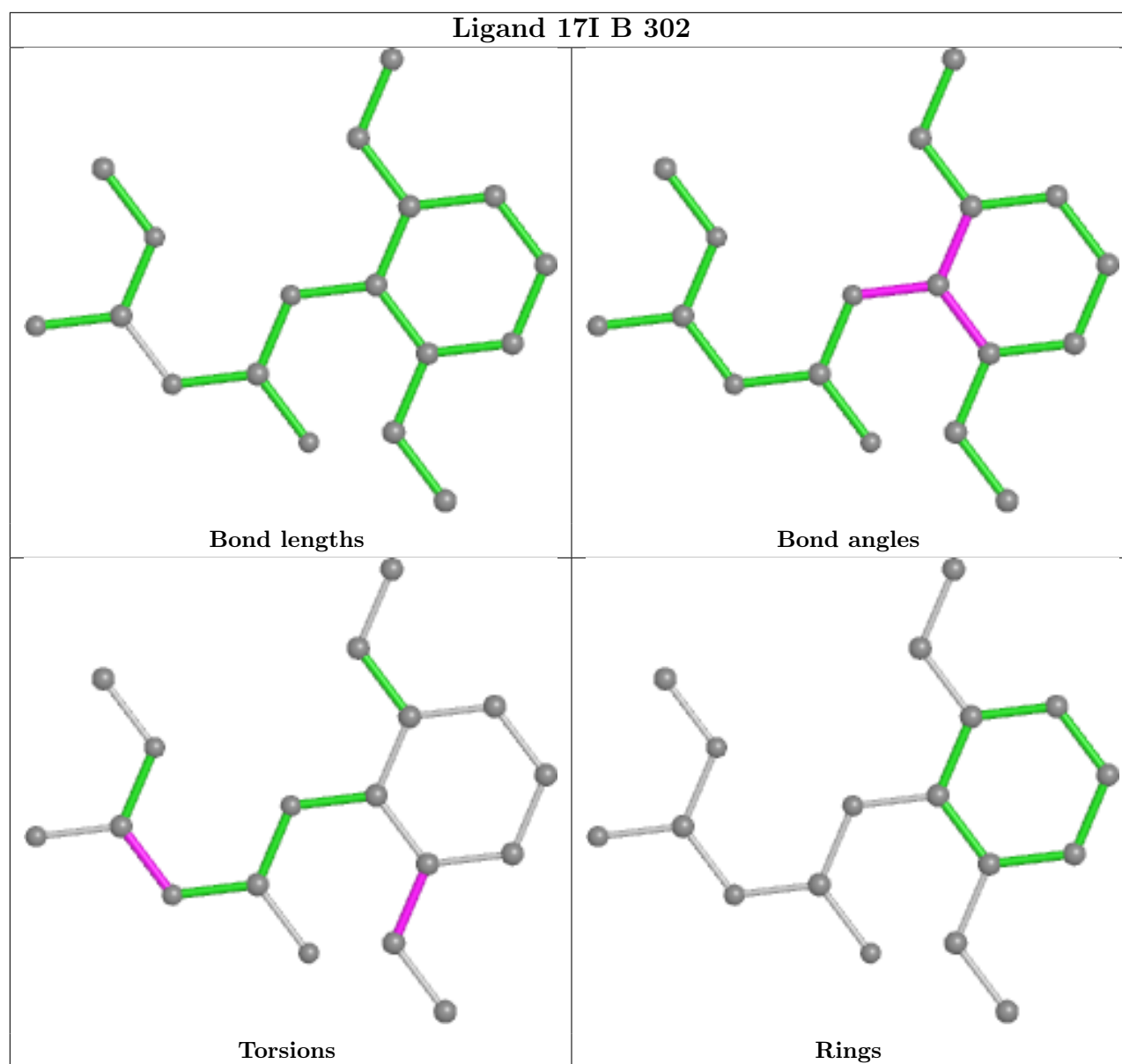
Bond angles



Torsions



Rings



5.7 Other polymers [i](#)

There are no such residues in this entry.

5.8 Polymer linkage issues [i](#)

There are no chain breaks in this entry.

6 Fit of model and data [i](#)

6.1 Protein, DNA and RNA chains [i](#)

In the following table, the column labelled ‘#RSRZ > 2’ contains the number (and percentage) of RSRZ outliers, followed by percent RSRZ outliers for the chain as percentile scores relative to all X-ray entries and entries of similar resolution. The OWAB column contains the minimum, median, 95th percentile and maximum values of the occupancy-weighted average B-factor per residue. The column labelled ‘Q < 0.9’ lists the number of (and percentage) of residues with an average occupancy less than 0.9.

Mol	Chain	Analysed	<RSRZ>	#RSRZ>2	OWAB(Å ²)	Q<0.9
1	A	221/244 (90%)	0.20	10 (4%) 33 33	18, 27, 43, 53	1 (0%)
1	B	223/244 (91%)	0.04	8 (3%) 42 44	17, 23, 42, 51	1 (0%)
All	All	444/488 (90%)	0.12	18 (4%) 37 37	17, 25, 43, 53	2 (0%)

All (18) RSRZ outliers are listed below:

Mol	Chain	Res	Type	RSRZ
1	A	30	GLY	4.1
1	B	229	GLY	4.0
1	B	106[A]	ASP	3.8
1	A	229	GLY	3.8
1	A	29	PRO	3.5
1	B	29	PRO	3.4
1	A	106	ASP	3.2
1	A	31	LEU	3.0
1	A	184	SER	2.9
1	B	13	ALA	2.9
1	B	30	GLY	2.8
1	A	185	THR	2.4
1	B	105	ARG	2.4
1	A	107	ALA	2.3
1	B	107	ALA	2.2
1	A	203	SER	2.1
1	B	202	LEU	2.1
1	A	32	THR	2.0

6.2 Non-standard residues in protein, DNA, RNA chains [i](#)

There are no non-standard protein/DNA/RNA residues in this entry.

6.3 Carbohydrates

There are no monosaccharides in this entry.

6.4 Ligands

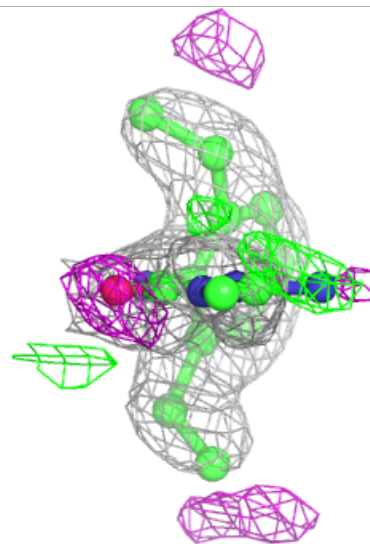
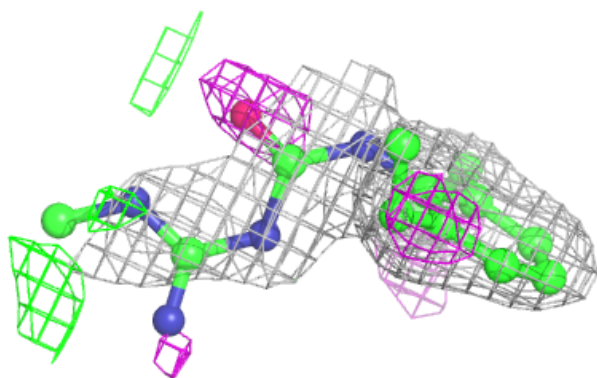
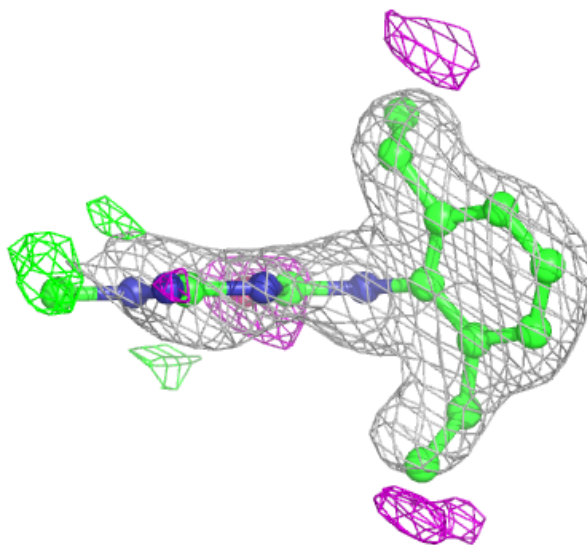
In the following table, the Atoms column lists the number of modelled atoms in the group and the number defined in the chemical component dictionary. The B-factors column lists the minimum, median, 95th percentile and maximum values of B factors of atoms in the group. The column labelled 'Q< 0.9' lists the number of atoms with occupancy less than 0.9.

Mol	Type	Chain	Res	Atoms	RSCC	RSR	B-factors(Å ²)	Q<0.9
6	DMS	A	307	4/4	0.81	0.22	44,55,69,83	0
6	DMS	A	309	4/4	0.84	0.21	56,61,74,77	0
3	17I	B	303[A]	18/18	0.90	0.25	28,34,55,57	18
3	17I	B	303[B]	18/18	0.90	0.25	26,34,60,61	18
6	DMS	B	308	4/4	0.90	0.13	41,59,60,84	0
5	GOL	A	306	6/6	0.94	0.09	29,30,32,33	0
6	DMS	A	308	4/4	0.94	0.12	51,56,57,80	0
3	17I	B	302	18/18	0.96	0.15	17,24,39,42	0
3	17I	A	302	18/18	0.96	0.16	18,23,35,39	2
4	MG	B	307	1/1	0.97	0.07	22,22,22,22	1
2	COA	A	301	27/48	0.98	0.06	20,23,26,30	0
2	COA	B	301	27/48	0.98	0.06	19,22,26,28	0
4	MG	A	303	1/1	0.98	0.05	20,20,20,20	1
4	MG	A	305	1/1	0.99	0.03	27,27,27,27	0
4	MG	B	304	1/1	0.99	0.08	19,19,19,19	0
4	MG	B	305	1/1	0.99	0.04	20,20,20,20	1
4	MG	B	306	1/1	0.99	0.03	20,20,20,20	1
4	MG	A	304	1/1	0.99	0.06	18,18,18,18	0

The following is a graphical depiction of the model fit to experimental electron density of all instances of the Ligand of Interest. In addition, ligands with molecular weight > 250 and outliers as shown on the geometry validation Tables will also be included. Each fit is shown from different orientation to approximate a three-dimensional view.

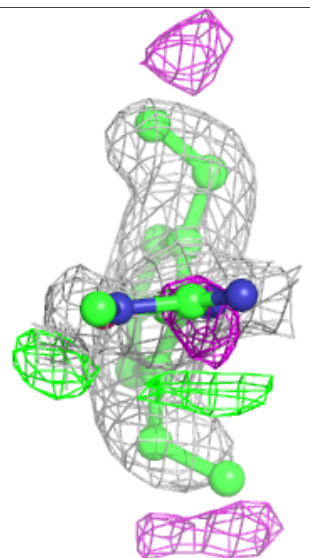
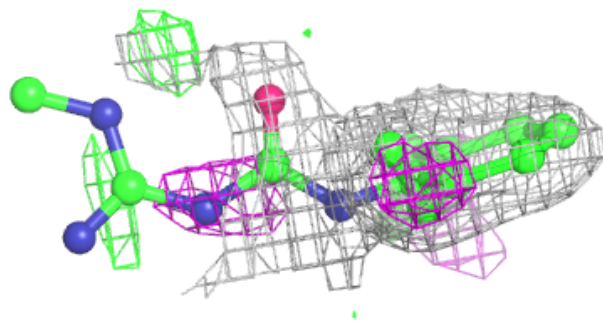
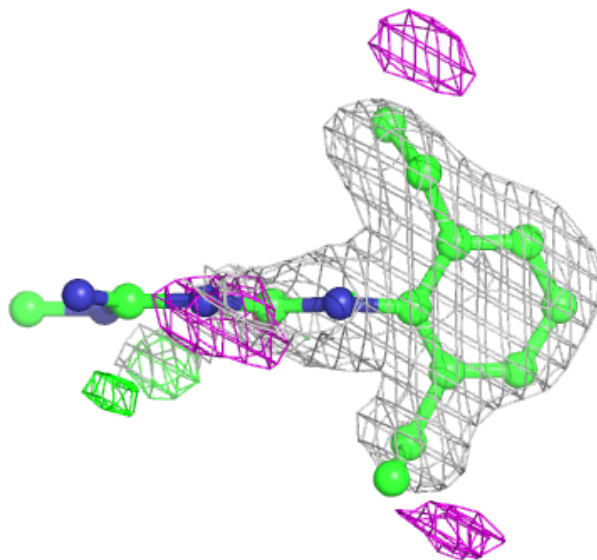
Electron density around 17I B 303 (A):

$2mF_o-DF_c$ (at 0.7 rmsd) in gray
 mF_o-DF_c (at 3 rmsd) in purple (negative)
and green (positive)



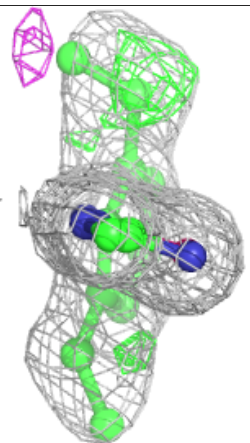
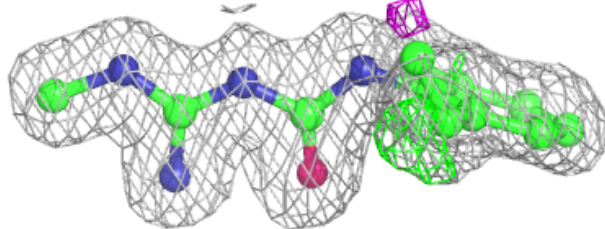
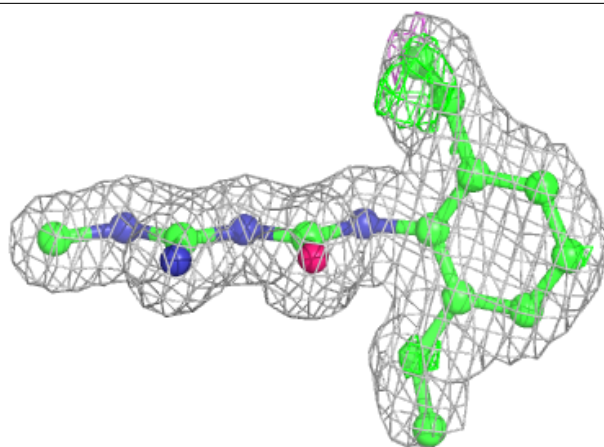
Electron density around 17I B 303 (B):

$2mF_o-DF_c$ (at 0.7 rmsd) in gray
 mF_o-DF_c (at 3 rmsd) in purple (negative)
and green (positive)



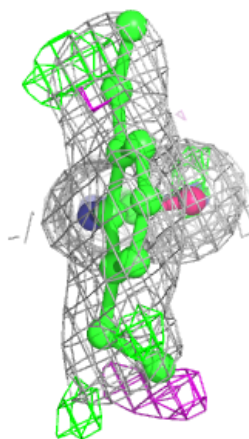
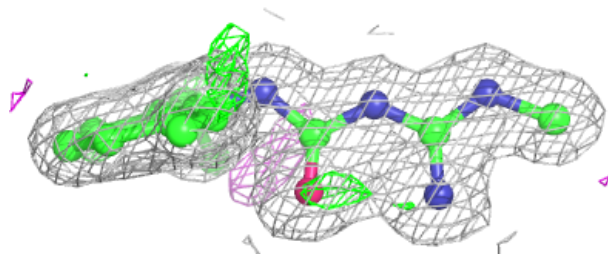
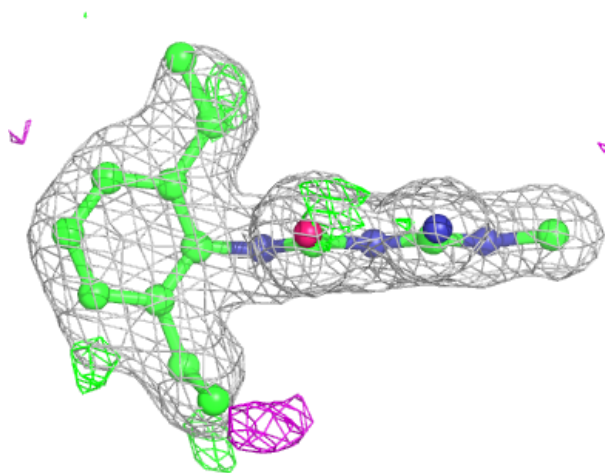
Electron density around 17I B 302:

$2mF_o - DF_c$ (at 0.7 rmsd) in gray
 $mF_o - DF_c$ (at 3 rmsd) in purple (negative)
and green (positive)



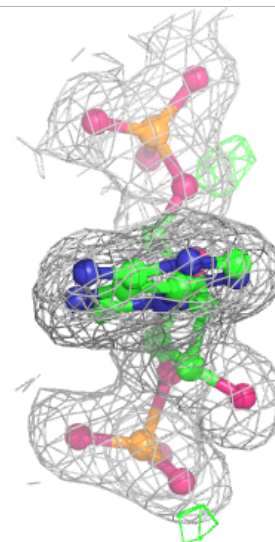
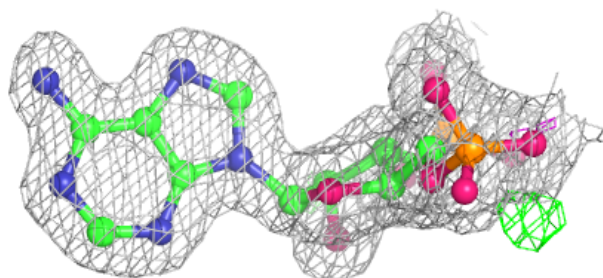
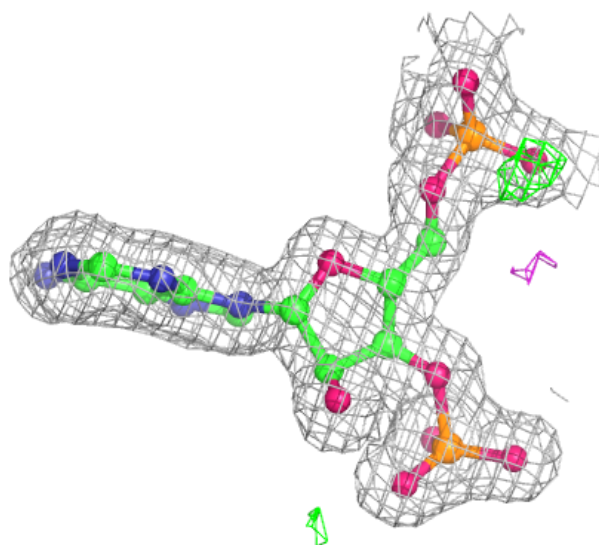
Electron density around 17I A 302:

$2mF_o-DF_c$ (at 0.7 rmsd) in gray
 mF_o-DF_c (at 3 rmsd) in purple (negative)
and green (positive)



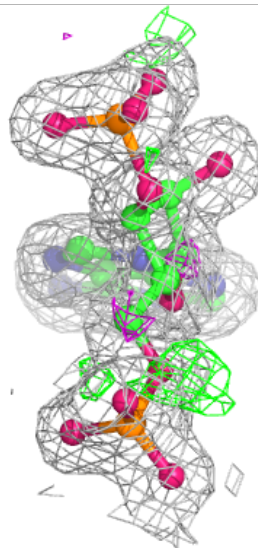
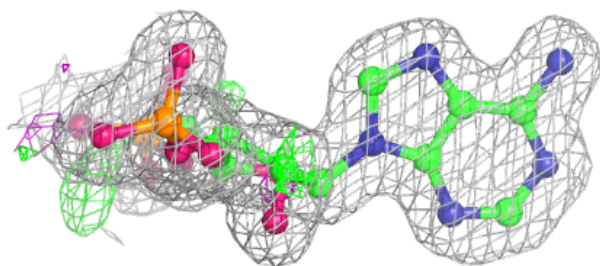
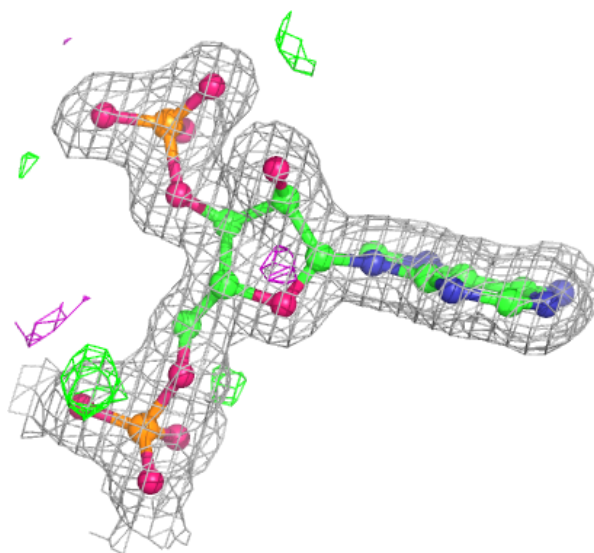
Electron density around COA A 301:

$2mF_o-DF_c$ (at 0.7 rmsd) in gray
 mF_o-DF_c (at 3 rmsd) in purple (negative)
and green (positive)



Electron density around COA B 301:

$2mF_o-DF_c$ (at 0.7 rmsd) in gray
 mF_o-DF_c (at 3 rmsd) in purple (negative)
and green (positive)



6.5 Other polymers [i](#)

There are no such residues in this entry.