



Full wwPDB X-ray Structure Validation Report ⓘ

Aug 17, 2020 – 04:27 PM BST

PDB ID : 1N9E
Title : Crystal structure of Pichia pastoris Lysyl Oxidase PPLO
Authors : Guss, J.M.; Duff, A.P.
Deposited on : 2002-11-24
Resolution : 1.65 Å(reported)

This is a Full wwPDB X-ray Structure Validation Report for a publicly released PDB entry.

We welcome your comments at validation@mail.wwpdb.org

A user guide is available at

<https://www.wwpdb.org/validation/2017/XrayValidationReportHelp>

with specific help available everywhere you see the ⓘ symbol.

The following versions of software and data (see [references ⓘ](#)) were used in the production of this report:

MolProbity : 4.02b-467
Mogul : 1.8.5 (274361), CSD as541be (2020)
Xtriage (Phenix) : 1.13
EDS : 2.13.1
Percentile statistics : 20191225.v01 (using entries in the PDB archive December 25th 2019)
Refmac : 5.8.0158
CCP4 : 7.0.044 (Gargrove)
Ideal geometry (proteins) : Engh & Huber (2001)
Ideal geometry (DNA, RNA) : Parkinson et al. (1996)
Validation Pipeline (wwPDB-VP) : 2.13.1

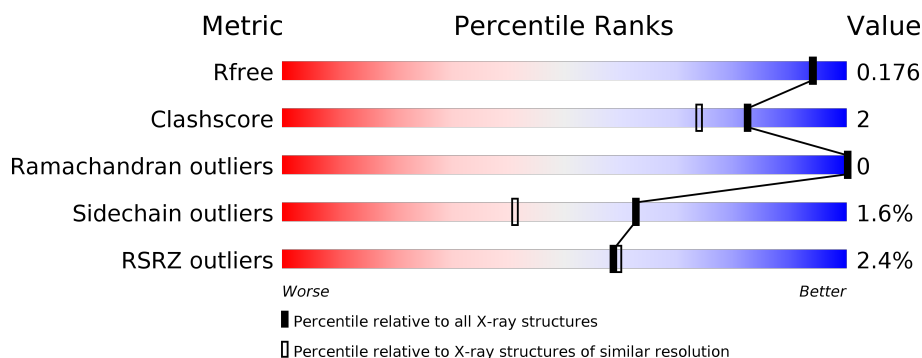
1 Overall quality at a glance

The following experimental techniques were used to determine the structure:

X-RAY DIFFRACTION

The reported resolution of this entry is 1.65 Å.

Percentile scores (ranging between 0-100) for global validation metrics of the entry are shown in the following graphic. The table shows the number of entries on which the scores are based.



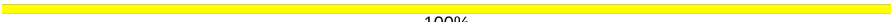
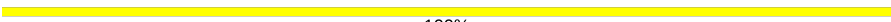
Metric	Whole archive (#Entries)	Similar resolution (#Entries, resolution range(Å))
R_{free}	130704	1827 (1.66-1.66)
Clashscore	141614	1931 (1.66-1.66)
Ramachandran outliers	138981	1891 (1.66-1.66)
Sidechain outliers	138945	1891 (1.66-1.66)
RSRZ outliers	127900	1791 (1.66-1.66)

The table below summarises the geometric issues observed across the polymeric chains and their fit to the electron density. The red, orange, yellow and green segments on the lower bar indicate the fraction of residues that contain outliers for ≥ 3 , 2, 1 and 0 types of geometric quality criteria respectively. A grey segment represents the fraction of residues that are not modelled. The numeric value for each fraction is indicated below the corresponding segment, with a dot representing fractions $\leq 5\%$. The upper red bar (where present) indicates the fraction of residues that have poor fit to the electron density. The numeric value is given above the bar.

Mol	Chain	Length	Quality of chain
1	A	787	<div> <div>2%</div> <div> <div></div> <div>85%</div> <div>8%</div> <div>7%</div> </div> </div>
1	B	787	<div> <div>3%</div> <div> <div></div> <div>87%</div> <div>6%</div> <div>7%</div> </div> </div>
1	C	787	<div> <div>2%</div> <div> <div></div> <div>86%</div> <div>7%</div> <div>7%</div> </div> </div>
1	D	787	<div> <div>2%</div> <div> <div></div> <div>85%</div> <div>8%</div> <div>7%</div> </div> </div>
2	E	2	<div> <div></div> <div>100%</div> </div>
2	F	2	<div> <div></div> <div>100%</div> </div>

Continued on next page...

Continued from previous page...

Mol	Chain	Length	Quality of chain
2	G	2	 100%
2	H	2	 100%

The following table lists non-polymeric compounds, carbohydrate monomers and non-standard residues in protein, DNA, RNA chains that are outliers for geometric or electron-density-fit criteria:

Mol	Type	Chain	Res	Chirality	Geometry	Clashes	Electron density
3	NAG	B	1309	-	-	-	X
3	NAG	C	1309	-	-	-	X

2 Entry composition [i](#)

There are 7 unique types of molecules in this entry. The entry contains 28271 atoms, of which 0 are hydrogens and 0 are deuteriums.

In the tables below, the ZeroOcc column contains the number of atoms modelled with zero occupancy, the AltConf column contains the number of residues with at least one atom in alternate conformation and the Trace column contains the number of residues modelled with at most 2 atoms.

- Molecule 1 is a protein called LYSYL OXIDASE.

Mol	Chain	Residues	Atoms					ZeroOcc	AltConf	Trace
1	A	735	Total	C	N	O	S	5	8	0
			5951	3772	962	1201	16			
1	B	735	Total	C	N	O	S	4	7	0
			5950	3772	962	1200	16			
1	C	735	Total	C	N	O	S	5	7	0
			5950	3772	962	1200	16			
1	D	735	Total	C	N	O	S	5	8	0
			5951	3772	962	1201	16			

- Molecule 2 is an oligosaccharide called 2-acetamido-2-deoxy-beta-D-glucopyranose-(1-4)-2-acetamido-2-deoxy-beta-D-glucopyranose.



Mol	Chain	Residues	Atoms				ZeroOcc	AltConf	Trace
2	E	2	Total	C	N	O	0	0	0
			28	16	2	10			
2	F	2	Total	C	N	O	0	0	0
			28	16	2	10			
2	G	2	Total	C	N	O	0	0	0
			28	16	2	10			
2	H	2	Total	C	N	O	0	0	0
			28	16	2	10			

- Molecule 3 is 2-acetamido-2-deoxy-beta-D-glucopyranose (three-letter code: NAG) (formula: C₈H₁₅NO₆).



Mol	Chain	Residues	Atoms				ZeroOcc	AltConf
3	A	1	Total	C	N	O	0	0
			14	8	1	5		
3	A	1	Total	C	N	O	0	0
			14	8	1	5		
3	A	1	Total	C	N	O	0	0
			14	8	1	5		
3	A	1	Total	C	N	O	0	0
			14	8	1	5		
3	B	1	Total	C	N	O	0	0
			14	8	1	5		
3	B	1	Total	C	N	O	0	0
			14	8	1	5		
3	B	1	Total	C	N	O	0	0
			14	8	1	5		
3	B	1	Total	C	N	O	0	0
			14	8	1	5		
3	C	1	Total	C	N	O	0	0
			14	8	1	5		
3	C	1	Total	C	N	O	0	0
			14	8	1	5		
3	C	1	Total	C	N	O	0	0
			14	8	1	5		
3	C	1	Total	C	N	O	0	0
			14	8	1	5		
3	D	1	Total	C	N	O	0	0
			14	8	1	5		
3	D	1	Total	C	N	O	0	0
			14	8	1	5		

Continued on next page...

Continued from previous page...

Mol	Chain	Residues	Atoms				ZeroOcc	AltConf
3	D	1	Total	C	N	O	0	0
			14	8	1	5		
3	D	1	Total	C	N	O	0	0
			14	8	1	5		

- Molecule 4 is COPPER (II) ION (three-letter code: CU) (formula: Cu).

Mol	Chain	Residues	Atoms		ZeroOcc	AltConf
4	B	1	Total	Cu	0	0
			1	1		
4	A	1	Total	Cu	0	0
			1	1		
4	D	1	Total	Cu	0	0
			1	1		
4	C	1	Total	Cu	0	0
			1	1		

- Molecule 5 is CALCIUM ION (three-letter code: CA) (formula: Ca).

Mol	Chain	Residues	Atoms		ZeroOcc	AltConf
5	B	2	Total	Ca	0	0
			2	2		
5	A	2	Total	Ca	0	0
			2	2		
5	D	2	Total	Ca	0	0
			2	2		
5	C	2	Total	Ca	0	0
			2	2		

- Molecule 6 is SULFATE ION (three-letter code: SO4) (formula: O₄S).



Mol	Chain	Residues	Atoms			ZeroOcc	AltConf
6	A	1	Total	O	S	0	0
			5	4	1		
6	A	1	Total	O	S	5	0
			5	4	1		
6	A	1	Total	O	S	0	0
			5	4	1		
6	A	1	Total	O	S	0	0
			5	4	1		
6	A	1	Total	O	S	0	0
			5	4	1		
6	A	1	Total	O	S	0	0
			5	4	1		
6	B	1	Total	O	S	0	0
			5	4	1		
6	B	1	Total	O	S	5	0
			5	4	1		
6	B	1	Total	O	S	0	0
			5	4	1		
6	B	1	Total	O	S	0	0
			5	4	1		
6	B	1	Total	O	S	0	0
			5	4	1		
6	B	1	Total	O	S	0	0
			5	4	1		

Continued on next page...

Continued from previous page...

Mol	Chain	Residues	Atoms	ZeroOcc	AltConf
6	C	1	Total O S 5 4 1	0	0
6	C	1	Total O S 5 4 1	5	0
6	C	1	Total O S 5 4 1	0	0
6	C	1	Total O S 5 4 1	0	0
6	C	1	Total O S 5 4 1	0	0
6	C	1	Total O S 5 4 1	0	0
6	C	1	Total O S 5 4 1	0	0
6	D	1	Total O S 5 4 1	0	0
6	D	1	Total O S 5 4 1	5	0
6	D	1	Total O S 5 4 1	0	0
6	D	1	Total O S 5 4 1	0	0
6	D	1	Total O S 5 4 1	0	0
6	D	1	Total O S 5 4 1	0	0
6	D	1	Total O S 5 4 1	0	0

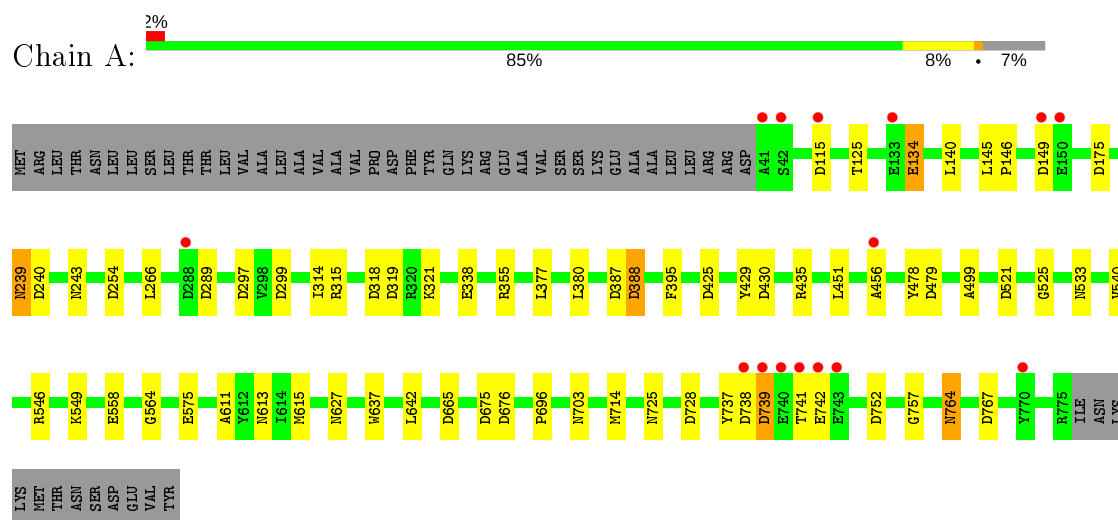
- Molecule 7 is water.

Mol	Chain	Residues	Atoms	ZeroOcc	AltConf
7	A	961	Total O 961 961	0	0
7	B	1048	Total O 1048 1048	0	0
7	C	1036	Total O 1036 1036	0	0
7	D	936	Total O 936 936	0	0

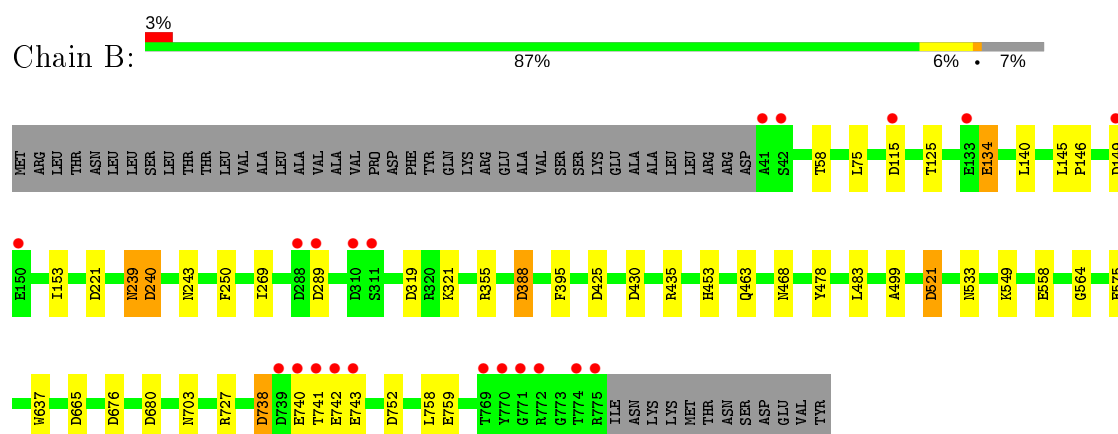
3 Residue-property plots [i](#)

These plots are drawn for all protein, RNA, DNA and oligosaccharide chains in the entry. The first graphic for a chain summarises the proportions of the various outlier classes displayed in the second graphic. The second graphic shows the sequence view annotated by issues in geometry and electron density. Residues are color-coded according to the number of geometric quality criteria for which they contain at least one outlier: green = 0, yellow = 1, orange = 2 and red = 3 or more. A red dot above a residue indicates a poor fit to the electron density ($RSRZ > 2$). Stretches of 2 or more consecutive residues without any outlier are shown as a green connector. Residues present in the sample, but not in the model, are shown in grey.

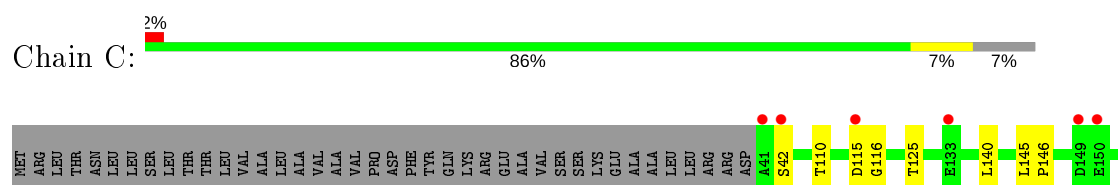
• Molecule 1: LYSYL OXIDASE

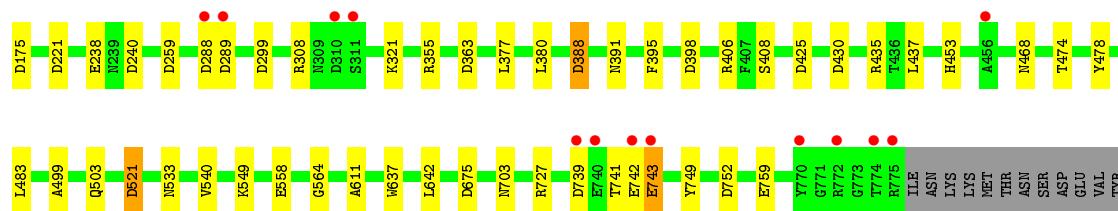


• Molecule 1: LYSYL OXIDASE

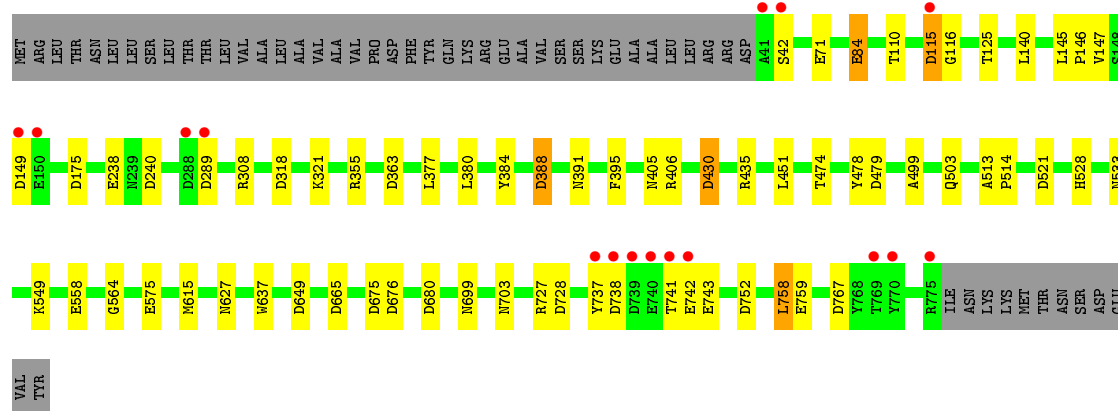
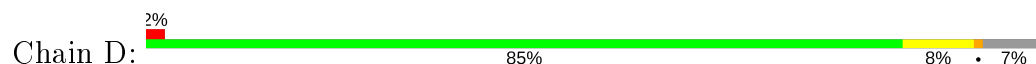


• Molecule 1: LYSYL OXIDASE





• Molecule 1: LYSYL OXIDASE



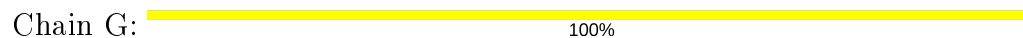
• Molecule 2: 2-acetamido-2-deoxy-beta-D-glucopyranose-(1-4)-2-acetamido-2-deoxy-beta-D-glucopyranose



• Molecule 2: 2-acetamido-2-deoxy-beta-D-glucopyranose-(1-4)-2-acetamido-2-deoxy-beta-D-glucopyranose



• Molecule 2: 2-acetamido-2-deoxy-beta-D-glucopyranose-(1-4)-2-acetamido-2-deoxy-beta-D-glucopyranose



• Molecule 2: 2-acetamido-2-deoxy-beta-D-glucopyranose-(1-4)-2-acetamido-2-deoxy-beta-D-glucopyranose

Chain H:

100%

MAG1
MAG2

4 Data and refinement statistics

Property	Value	Source
Space group	C 1 2 1	Depositor
Cell constants a, b, c, α , β , γ	248.44Å 121.12Å 151.84Å 90.00° 124.64° 90.00°	Depositor
Resolution (Å)	24.60 – 1.65 24.60 – 1.65	Depositor EDS
% Data completeness (in resolution range)	94.7 (24.60-1.65) 90.5 (24.60-1.65)	Depositor EDS
R_{merge}	0.06	Depositor
R_{sym}	(Not available)	Depositor
$\langle I/\sigma(I) \rangle$ ¹	1.94 (at 1.65Å)	Xtriage
Refinement program	REFMAC 5.0	Depositor
R, R_{free}	0.161 , 0.187 0.170 , 0.176	Depositor DCC
R_{free} test set	39120 reflections (5.01%)	wwPDB-VP
Wilson B-factor (Å ²)	13.4	Xtriage
Anisotropy	0.180	Xtriage
Bulk solvent k_{sol} (e/Å ³), B_{sol} (Å ²)	0.32 , 47.6	EDS
L-test for twinning ²	$\langle L \rangle = 0.50$, $\langle L^2 \rangle = 0.33$	Xtriage
Estimated twinning fraction	0.010 for -h-2*k,l	Xtriage
F_o, F_c correlation	0.96	EDS
Total number of atoms	28271	wwPDB-VP
Average B, all atoms (Å ²)	17.0	wwPDB-VP

Xtriage's analysis on translational NCS is as follows: *The largest off-origin peak in the Patterson function is 2.37% of the height of the origin peak. No significant pseudotranslation is detected.*

¹Intensities estimated from amplitudes.

²Theoretical values of $\langle |L| \rangle$, $\langle L^2 \rangle$ for acentric reflections are 0.5, 0.333 respectively for untwinned datasets, and 0.375, 0.2 for perfectly twinned datasets.

5 Model quality

5.1 Standard geometry

Bond lengths and bond angles in the following residue types are not validated in this section: CA, CU, NAG, TPQ, SO4

The Z score for a bond length (or angle) is the number of standard deviations the observed value is removed from the expected value. A bond length (or angle) with $|Z| > 5$ is considered an outlier worth inspection. RMSZ is the root-mean-square of all Z scores of the bond lengths (or angles).

Mol	Chain	Bond lengths		Bond angles	
		RMSZ	$\# Z > 5$	RMSZ	$\# Z > 5$
1	A	0.49	0/6132	0.86	20/8355 (0.2%)
1	B	0.51	0/6126	0.86	12/8347 (0.1%)
1	C	0.51	0/6126	0.86	15/8347 (0.2%)
1	D	0.48	0/6132	0.86	18/8355 (0.2%)
All	All	0.50	0/24516	0.86	65/33404 (0.2%)

There are no bond length outliers.

All (65) bond angle outliers are listed below:

Mol	Chain	Res	Type	Atoms	Z	Observed(°)	Ideal(°)
1	A	388	ASP	CB-CG-OD2	7.16	124.74	118.30
1	B	521	ASP	CB-CG-OD2	6.95	124.56	118.30
1	D	388	ASP	CB-CG-OD2	6.58	124.22	118.30
1	C	240	ASP	CB-CG-OD2	6.53	124.17	118.30
1	D	240	ASP	CB-CG-OD2	6.50	124.15	118.30
1	D	680	ASP	CB-CG-OD2	6.47	124.12	118.30
1	B	665	ASP	CB-CG-OD2	6.42	124.07	118.30
1	C	521	ASP	CB-CG-OD2	6.29	123.96	118.30
1	A	240	ASP	CB-CG-OD2	6.29	123.96	118.30
1	D	479	ASP	CB-CG-OD2	6.26	123.93	118.30
1	D	675	ASP	CB-CG-OD2	6.22	123.90	118.30
1	C	175	ASP	CB-CG-OD2	6.17	123.85	118.30
1	B	221	ASP	CB-CG-OD2	6.06	123.75	118.30
1	D	738	ASP	CB-CG-OD2	6.04	123.73	118.30
1	D	318	ASP	CB-CG-OD2	5.98	123.68	118.30
1	D	728	ASP	CB-CG-OD2	5.91	123.62	118.30
1	D	175	ASP	CB-CG-OD2	5.82	123.53	118.30
1	C	221	ASP	CB-CG-OD2	5.76	123.49	118.30
1	B	115	ASP	CB-CG-OD2	5.75	123.47	118.30
1	C	388	ASP	CB-CG-OD2	5.68	123.41	118.30

Continued on next page...

Continued from previous page...

Mol	Chain	Res	Type	Atoms	Z	Observed(°)	Ideal(°)
1	A	642	LEU	CA-CB-CG	5.66	128.31	115.30
1	C	259	ASP	CB-CG-OD2	5.65	123.39	118.30
1	C	675	ASP	CB-CG-OD2	5.62	123.36	118.30
1	B	240	ASP	CB-CG-OD2	5.60	123.34	118.30
1	A	297	ASP	CB-CG-OD2	5.55	123.30	118.30
1	C	288	ASP	CB-CG-OD2	5.54	123.29	118.30
1	A	675	ASP	CB-CG-OD2	5.52	123.26	118.30
1	B	680	ASP	CB-CG-OD2	5.51	123.26	118.30
1	A	676	ASP	CB-CG-OD2	5.51	123.25	118.30
1	A	387	ASP	CB-CG-OD2	5.50	123.25	118.30
1	C	642	LEU	CA-CB-CG	5.48	127.91	115.30
1	A	728	ASP	CB-CG-OD2	5.47	123.22	118.30
1	D	363	ASP	CB-CG-OD2	5.42	123.17	118.30
1	A	175	ASP	CB-CG-OD2	5.40	123.16	118.30
1	B	388	ASP	CB-CG-OD2	5.39	123.15	118.30
1	B	289	ASP	CB-CG-OD2	5.37	123.13	118.30
1	B	430	ASP	CB-CG-OD2	5.36	123.12	118.30
1	D	665	ASP	CB-CG-OD2	5.35	123.11	118.30
1	C	299	ASP	CB-CG-OD2	5.33	123.10	118.30
1	A	479	ASP	CB-CG-OD2	5.33	123.09	118.30
1	D	115	ASP	CB-CG-OD2	5.33	123.09	118.30
1	C	289	ASP	CB-CG-OD2	5.32	123.09	118.30
1	D	149	ASP	CB-CG-OD2	5.32	123.09	118.30
1	C	739	ASP	CB-CG-OD2	5.31	123.08	118.30
1	C	363	ASP	CB-CG-OD2	5.30	123.07	118.30
1	D	289	ASP	CB-CG-OD2	5.26	123.04	118.30
1	A	665	ASP	CB-CG-OD2	5.25	123.02	118.30
1	A	115	ASP	CB-CG-OD2	5.24	123.02	118.30
1	D	767	ASP	CB-CG-OD2	5.23	123.00	118.30
1	B	319	ASP	CB-CG-OD2	5.23	123.00	118.30
1	A	319	ASP	CB-CG-OD2	5.22	123.00	118.30
1	A	767	ASP	CB-CG-OD2	5.18	122.96	118.30
1	D	676	ASP	CB-CG-OD2	5.18	122.96	118.30
1	A	425	ASP	CB-CG-OD2	5.16	122.95	118.30
1	C	398	ASP	CB-CG-OD2	5.16	122.94	118.30
1	A	289	ASP	CB-CG-OD2	5.15	122.93	118.30
1	B	676	ASP	CB-CG-OD2	5.11	122.90	118.30
1	A	546	ARG	CG-CD-NE	-5.11	101.07	111.80
1	D	649	ASP	CB-CG-OD2	5.10	122.89	118.30
1	A	149	ASP	CB-CG-OD2	5.10	122.89	118.30
1	A	299	ASP	CB-CG-OD2	5.04	122.83	118.30
1	A	738	ASP	CB-CG-OD2	5.02	122.82	118.30

Continued on next page...

Continued from previous page...

Mol	Chain	Res	Type	Atoms	Z	Observed($^{\circ}$)	Ideal($^{\circ}$)
1	C	308	ARG	CG-CD-NE	-5.01	101.27	111.80
1	B	149	ASP	CB-CG-OD2	5.01	122.81	118.30
1	D	430	ASP	CB-CG-OD2	5.01	122.81	118.30

There are no chirality outliers.

There are no planarity outliers.

5.2 Too-close contacts

In the following table, the Non-H and H(model) columns list the number of non-hydrogen atoms and hydrogen atoms in the chain respectively. The H(added) column lists the number of hydrogen atoms added and optimized by MolProbity. The Clashes column lists the number of clashes within the asymmetric unit, whereas Symm-Clashes lists symmetry related clashes.

Mol	Chain	Non-H	H(model)	H(added)	Clashes	Symm-Clashes
1	A	5951	0	5497	35	0
1	B	5950	0	5495	29	0
1	C	5950	0	5495	26	0
1	D	5951	0	5496	34	0
2	E	28	0	25	0	0
2	F	28	0	25	0	0
2	G	28	0	25	0	0
2	H	28	0	25	0	0
3	A	56	0	52	0	0
3	B	56	0	52	0	0
3	C	56	0	52	0	0
3	D	56	0	52	0	0
4	A	1	0	0	0	0
4	B	1	0	0	0	0
4	C	1	0	0	0	0
4	D	1	0	0	0	0
5	A	2	0	0	0	0
5	B	2	0	0	0	0
5	C	2	0	0	0	0
5	D	2	0	0	0	0
6	A	35	0	0	0	0
6	B	35	0	0	0	0
6	C	35	0	0	0	0
6	D	35	0	0	0	0
7	A	961	0	0	5	0
7	B	1048	0	0	5	0

Continued on next page...

Continued from previous page...

Mol	Chain	Non-H	H(model)	H(added)	Clashes	Symm-Clashes
7	C	1036	0	0	6	0
7	D	936	0	0	3	0
All	All	28271	0	22291	114	0

The all-atom clashscore is defined as the number of clashes found per 1000 atoms (including hydrogen atoms). The all-atom clashscore for this structure is 2.

All (114) close contacts within the same asymmetric unit are listed below, sorted by their clash magnitude.

Atom-1	Atom-2	Interatomic distance (Å)	Clash overlap (Å)
1:A:435:ARG:HD2	7:A:2718:HOH:O	0.97	1.15
1:C:435:ARG:HD2	7:C:6718:HOH:O	0.96	1.13
1:B:435:ARG:HD2	7:B:4718:HOH:O	0.88	1.04
1:A:764:ASN:HD22	1:A:764:ASN:H	1.16	0.90
1:C:743:GLU:HA	1:C:743:GLU:OE2	1.71	0.90
1:A:549:LYS:NZ	1:A:575:GLU:OE1	2.06	0.88
1:A:499:ALA:HB1	7:A:2670:HOH:O	1.74	0.85
1:B:239:ASN:H	1:B:239:ASN:HD22	1.24	0.84
1:C:499:ALA:HB1	7:C:6670:HOH:O	1.86	0.74
1:B:759:GLU:HA	1:B:759:GLU:OE2	1.87	0.73
1:B:499:ALA:HB1	7:B:4670:HOH:O	1.88	0.73
1:A:239:ASN:HD22	1:A:239:ASN:H	1.37	0.72
1:A:764:ASN:H	1:A:764:ASN:ND2	1.89	0.70
1:C:435:ARG:CD	7:C:6718:HOH:O	1.74	0.70
1:B:435:ARG:CD	7:B:4718:HOH:O	1.64	0.67
1:B:738:ASP:C	1:B:738:ASP:OD1	2.33	0.67
1:B:738:ASP:OD1	1:B:740:GLU:N	2.27	0.66
1:B:239:ASN:N	1:B:239:ASN:HD22	1.94	0.66
1:D:741:THR:O	1:D:742:GLU:HB2	1.97	0.64
1:D:391:ASN:ND2	1:D:503:GLN:HE21	1.94	0.64
1:D:549:LYS:NZ	1:D:575:GLU:OE1	2.31	0.64
1:D:499:ALA:HB1	7:D:8670:HOH:O	1.97	0.63
1:C:391:ASN:ND2	1:C:503:GLN:HE21	1.99	0.61
1:D:627:ASN:ND2	7:D:9062:HOH:O	2.35	0.59
1:C:42:SER:OG	1:D:759:GLU:OE2	2.20	0.57
1:D:84:GLU:OE2	1:D:84:GLU:CA	2.52	0.57
1:A:377:LEU:HD21	1:A:380:LEU:HD11	1.87	0.56
1:B:741:THR:O	1:B:742:GLU:HB2	2.06	0.56
1:D:110:THR:HG22	1:D:116:GLY:HA3	1.88	0.55
1:A:613:ASN:ND2	1:A:615[B]:MET:HG3	2.22	0.54
1:B:463:GLN:NE2	7:B:2441:HOH:O	2.41	0.54

Continued on next page...

Continued from previous page...

Atom-1	Atom-2	Interatomic distance (Å)	Clash overlap (Å)
1:A:558[B]:GLU:CD	1:A:564:GLY:H	2.11	0.54
1:C:741:THR:O	1:C:742:GLU:HB2	2.08	0.54
1:A:435:ARG:CD	7:A:2718:HOH:O	1.86	0.53
1:B:558[B]:GLU:CD	1:B:564:GLY:H	2.12	0.53
1:D:84:GLU:OE2	1:D:84:GLU:N	2.43	0.52
1:C:558[B]:GLU:CD	1:C:564:GLY:H	2.12	0.52
7:C:8739:HOH:O	1:D:615[A]:MET:HE3	2.11	0.51
1:D:84:GLU:OE2	1:D:84:GLU:HA	2.11	0.51
1:A:741:THR:O	1:A:742:GLU:HB2	2.11	0.51
1:A:239:ASN:N	1:A:239:ASN:HD22	2.03	0.51
1:A:737:TYR:CZ	1:A:742:GLU:HA	2.45	0.50
7:C:8739:HOH:O	1:D:615[A]:MET:CE	2.59	0.50
1:A:558[B]:GLU:OE1	7:A:2647:HOH:O	2.20	0.50
1:B:727:ARG:CZ	1:B:727:ARG:HA	2.42	0.50
1:D:558[B]:GLU:CD	1:D:564:GLY:H	2.14	0.50
1:D:405:ASN:HA	1:D:435:ARG:CZ	2.42	0.49
1:B:58:THR:HG21	7:B:5161:HOH:O	2.12	0.49
1:B:758:LEU:HD12	1:B:758:LEU:C	2.33	0.49
1:A:739:ASP:OD1	1:A:739:ASP:N	2.45	0.49
1:C:321:LYS:HE2	1:D:752:ASP:O	2.12	0.48
1:D:377:LEU:HD21	1:D:380:LEU:HD11	1.95	0.48
1:C:377:LEU:HD21	1:C:380:LEU:HD11	1.94	0.48
1:A:456:ALA:HB2	1:B:240:ASP:HB2	1.95	0.48
1:C:238:GLU:HA	1:C:238:GLU:OE1	2.13	0.48
1:D:125[B]:THR:CG2	1:D:140:LEU:HB2	2.44	0.48
1:C:743:GLU:OE2	1:C:743:GLU:CA	2.54	0.47
1:A:125[B]:THR:HG22	1:A:140:LEU:O	2.14	0.47
1:A:703:ASN:HD21	1:B:453:HIS:HB2	1.79	0.47
1:C:145:LEU:HA	1:C:146:PRO:C	2.35	0.47
1:A:451:LEU:C	1:A:451:LEU:HD12	2.35	0.47
1:C:533:ASN:HB2	1:C:637:TRP:CE3	2.50	0.47
1:D:758:LEU:C	1:D:758:LEU:HD12	2.34	0.47
1:B:533:ASN:HB2	1:B:637:TRP:CE3	2.50	0.47
1:A:533:ASN:HB2	1:A:637:TRP:CE3	2.51	0.46
1:A:757:GLY:HA2	1:B:759:GLU:OE2	2.14	0.46
1:D:451:LEU:C	1:D:451:LEU:HD12	2.36	0.46
1:C:453:HIS:HB2	1:D:703:ASN:HD21	1.80	0.46
1:B:125[B]:THR:CG2	1:B:140:LEU:HB2	2.46	0.46
1:D:533:ASN:HB2	1:D:637:TRP:CE3	2.51	0.46
1:B:145:LEU:HA	1:B:146:PRO:C	2.37	0.45
1:D:741:THR:OG1	1:D:743:GLU:HB2	2.16	0.45

Continued on next page...

Continued from previous page...

Atom-1	Atom-2	Interatomic distance (Å)	Clash overlap (Å)
1:C:125[B]:THR:HG22	1:C:140:LEU:HB2	1.99	0.45
1:A:145:LEU:HA	1:A:146:PRO:C	2.37	0.45
1:D:238:GLU:HG2	1:D:238:GLU:H	1.66	0.45
1:C:749:TYR:CE2	1:D:308:ARG:HB3	2.52	0.45
1:D:727:ARG:CZ	1:D:727:ARG:HA	2.47	0.45
1:A:321:LYS:HE2	1:B:752:ASP:O	2.17	0.45
1:C:727:ARG:HA	1:C:727:ARG:CZ	2.48	0.44
1:D:145:LEU:HA	1:D:146:PRO:C	2.38	0.44
1:A:314:ILE:HG23	1:A:318:ASP:HB3	1.99	0.44
1:A:737:TYR:OH	1:A:742:GLU:HA	2.18	0.44
1:A:540:VAL:HG11	1:A:611:ALA:HA	1.98	0.44
1:C:430:ASP:N	7:C:6516:HOH:O	2.36	0.43
1:A:254:ASP:HB2	1:A:266:LEU:HD11	2.00	0.43
1:C:125[B]:THR:CG2	1:C:140:LEU:HB2	2.48	0.43
1:D:384:TYR:CD2	1:D:528:HIS:HB3	2.54	0.43
1:A:615[B]:MET:HE2	1:A:714:MET:HB2	2.00	0.43
1:C:540:VAL:HG11	1:C:611:ALA:HA	2.00	0.43
1:D:513:ALA:N	1:D:514:PRO:CD	2.82	0.43
1:C:406:ARG:HD2	1:C:474:THR:O	2.18	0.43
1:C:468:ASN:HB3	1:C:483:LEU:HD11	2.01	0.42
1:B:134:GLU:HA	1:B:134:GLU:OE2	2.17	0.42
1:B:243:ASN:HA	1:B:243:ASN:HD22	1.61	0.42
1:B:250:PHE:HB2	1:B:269:ILE:HB	2.02	0.42
1:C:408:SER:HB3	1:C:437:LEU:HB2	2.02	0.42
1:D:737:TYR:CZ	1:D:742:GLU:HA	2.54	0.42
1:C:752:ASP:O	1:D:321:LYS:HE2	2.19	0.42
1:B:75:LEU:HG	1:B:153:ILE:HD11	2.02	0.41
1:D:125[B]:THR:HG22	1:D:140:LEU:O	2.20	0.41
1:D:406:ARG:HD2	1:D:474:THR:O	2.20	0.41
1:B:758:LEU:HD12	1:B:758:LEU:O	2.21	0.41
1:B:549:LYS:NZ	1:B:575:GLU:OE1	2.54	0.41
1:A:338:GLU:HG2	7:A:3127:HOH:O	2.20	0.41
1:A:613:ASN:ND2	1:A:615[B]:MET:CG	2.84	0.41
1:A:525[A]:GLY:O	1:A:696:PRO:HD2	2.20	0.41
1:B:468:ASN:HB3	1:B:483:LEU:HD11	2.02	0.41
1:D:71:GLU:HB3	1:D:147:VAL:CG2	2.51	0.41
1:A:134:GLU:HA	1:A:134:GLU:OE2	2.19	0.41
1:A:752:ASP:O	1:B:321:LYS:HE2	2.21	0.41
1:C:110:THR:HG22	1:C:116:GLY:HA3	2.03	0.41
1:A:429:TYR:O	1:A:430:ASP:HB2	2.22	0.40
1:D:430:ASP:N	7:D:8516:HOH:O	2.44	0.40

Continued on next page...

Continued from previous page...

Atom-1	Atom-2	Interatomic distance (Å)	Clash overlap (Å)
1:A:314:ILE:HG22	1:A:315:ARG:O	2.22	0.40

There are no symmetry-related clashes.

5.3 Torsion angles [i](#)

5.3.1 Protein backbone [i](#)

In the following table, the Percentiles column shows the percent Ramachandran outliers of the chain as a percentile score with respect to all X-ray entries followed by that with respect to entries of similar resolution.

The Analysed column shows the number of residues for which the backbone conformation was analysed, and the total number of residues.

Mol	Chain	Analysed	Favoured	Allowed	Outliers	Percentiles	
1	A	740/787 (94%)	716 (97%)	24 (3%)	0	100	100
1	B	739/787 (94%)	717 (97%)	22 (3%)	0	100	100
1	C	739/787 (94%)	715 (97%)	24 (3%)	0	100	100
1	D	740/787 (94%)	715 (97%)	25 (3%)	0	100	100
All	All	2958/3148 (94%)	2863 (97%)	95 (3%)	0	100	100

There are no Ramachandran outliers to report.

5.3.2 Protein sidechains [i](#)

In the following table, the Percentiles column shows the percent sidechain outliers of the chain as a percentile score with respect to all X-ray entries followed by that with respect to entries of similar resolution.

The Analysed column shows the number of residues for which the sidechain conformation was analysed, and the total number of residues.

Mol	Chain	Analysed	Rotameric	Outliers	Percentiles	
1	A	652/692 (94%)	641 (98%)	11 (2%)	60	39
1	B	651/692 (94%)	641 (98%)	10 (2%)	65	44
1	C	651/692 (94%)	641 (98%)	10 (2%)	65	44
1	D	652/692 (94%)	643 (99%)	9 (1%)	67	46

Continued on next page...

Continued from previous page...

Mol	Chain	Analysed	Rotameric	Outliers	Percentiles
All	All	2606/2768 (94%)	2566 (98%)	40 (2%)	62 44

All (40) residues with a non-rotameric sidechain are listed below:

Mol	Chain	Res	Type
1	A	134	GLU
1	A	239	ASN
1	A	243	ASN
1	A	355	ARG
1	A	388	ASP
1	A	395	PHE
1	A	521	ASP
1	A	627	ASN
1	A	725	ASN
1	A	739	ASP
1	A	764	ASN
1	B	134	GLU
1	B	239	ASN
1	B	355	ARG
1	B	388	ASP
1	B	395	PHE
1	B	425	ASP
1	B	521	ASP
1	B	703	ASN
1	B	738	ASP
1	B	743	GLU
1	C	115	ASP
1	C	355	ARG
1	C	388	ASP
1	C	395	PHE
1	C	425	ASP
1	C	521	ASP
1	C	549	LYS
1	C	703	ASN
1	C	743	GLU
1	C	759	GLU
1	D	42	SER
1	D	84	GLU
1	D	115	ASP
1	D	355	ARG
1	D	388	ASP
1	D	395	PHE

Continued on next page...

Continued from previous page...

Mol	Chain	Res	Type
1	D	521	ASP
1	D	699	ASN
1	D	758	LEU

Some sidechains can be flipped to improve hydrogen bonding and reduce clashes. All (25) such sidechains are listed below:

Mol	Chain	Res	Type
1	A	239	ASN
1	A	243	ASN
1	A	272	ASN
1	A	613	ASN
1	A	627	ASN
1	A	703	ASN
1	A	764	ASN
1	B	77	HIS
1	B	187	ASN
1	B	239	ASN
1	B	243	ASN
1	C	77	HIS
1	C	187	ASN
1	C	262	GLN
1	C	271	ASN
1	C	391	ASN
1	C	571	GLN
1	C	583	ASN
1	D	50	ASN
1	D	243	ASN
1	D	271	ASN
1	D	272	ASN
1	D	391	ASN
1	D	627	ASN
1	D	703	ASN

5.3.3 RNA ⓘ

There are no RNA molecules in this entry.

5.4 Non-standard residues in protein, DNA, RNA chains ⓘ

4 non-standard protein/DNA/RNA residues are modelled in this entry.

In the following table, the Counts columns list the number of bonds (or angles) for which Mogul statistics could be retrieved, the number of bonds (or angles) that are observed in the model and the number of bonds (or angles) that are defined in the Chemical Component Dictionary. The Link column lists molecule types, if any, to which the group is linked. The Z score for a bond length (or angle) is the number of standard deviations the observed value is removed from the expected value. A bond length (or angle) with $|Z| > 2$ is considered an outlier worth inspection. RMSZ is the root-mean-square of all Z scores of the bond lengths (or angles).

Mol	Type	Chain	Res	Link	Bond lengths			Bond angles		
					Counts	RMSZ	# Z > 2	Counts	RMSZ	# Z > 2
1	TPQ	A	478	1,4	13,14,15	1.60	2 (15%)	15,19,21	0.89	1 (6%)
1	TPQ	D	478	1,4	13,14,15	1.49	3 (23%)	15,19,21	1.12	1 (6%)
1	TPQ	B	478	1,4	13,14,15	1.48	2 (15%)	15,19,21	1.15	1 (6%)
1	TPQ	C	478	1,4	13,14,15	1.52	2 (15%)	15,19,21	1.28	1 (6%)

In the following table, the Chirals column lists the number of chiral outliers, the number of chiral centers analysed, the number of these observed in the model and the number defined in the Chemical Component Dictionary. Similar counts are reported in the Torsion and Rings columns. '-' means no outliers of that kind were identified.

Mol	Type	Chain	Res	Link	Chirals	Torsions	Rings
1	TPQ	A	478	1,4	-	2/5/22/24	0/1/1/1
1	TPQ	D	478	1,4	-	2/5/22/24	0/1/1/1
1	TPQ	B	478	1,4	-	2/5/22/24	0/1/1/1
1	TPQ	C	478	1,4	-	2/5/22/24	0/1/1/1

All (9) bond length outliers are listed below:

Mol	Chain	Res	Type	Atoms	Z	Observed(Å)	Ideal(Å)
1	A	478	TPQ	O4-C4	-3.64	1.24	1.34
1	D	478	TPQ	O4-C4	-3.59	1.24	1.34
1	C	478	TPQ	O4-C4	-3.34	1.25	1.34
1	B	478	TPQ	O4-C4	-3.30	1.25	1.34
1	C	478	TPQ	C3-C4	2.67	1.39	1.35
1	B	478	TPQ	C3-C4	2.42	1.39	1.35
1	A	478	TPQ	C3-C4	2.40	1.39	1.35
1	D	478	TPQ	C3-C4	2.09	1.38	1.35
1	D	478	TPQ	C6-C1	2.07	1.40	1.34

All (4) bond angle outliers are listed below:

Mol	Chain	Res	Type	Atoms	Z	Observed(°)	Ideal(°)
1	C	478	TPQ	CA-CB-C1	-3.46	106.90	113.51

Continued on next page...

Continued from previous page...

Mol	Chain	Res	Type	Atoms	Z	Observed(°)	Ideal(°)
1	D	478	TPQ	CA-CB-C1	-2.57	108.60	113.51
1	B	478	TPQ	CA-CB-C1	-2.24	109.23	113.51
1	A	478	TPQ	CA-CB-C1	-2.10	109.50	113.51

There are no chirality outliers.

All (8) torsion outliers are listed below:

Mol	Chain	Res	Type	Atoms
1	A	478	TPQ	C-CA-CB-C1
1	D	478	TPQ	C-CA-CB-C1
1	B	478	TPQ	C-CA-CB-C1
1	C	478	TPQ	C-CA-CB-C1
1	A	478	TPQ	N-CA-CB-C1
1	D	478	TPQ	N-CA-CB-C1
1	B	478	TPQ	N-CA-CB-C1
1	C	478	TPQ	N-CA-CB-C1

There are no ring outliers.

No monomer is involved in short contacts.

5.5 Carbohydrates

8 monosaccharides are modelled in this entry.

In the following table, the Counts columns list the number of bonds (or angles) for which Mogul statistics could be retrieved, the number of bonds (or angles) that are observed in the model and the number of bonds (or angles) that are defined in the Chemical Component Dictionary. The Link column lists molecule types, if any, to which the group is linked. The Z score for a bond length (or angle) is the number of standard deviations the observed value is removed from the expected value. A bond length (or angle) with $|Z| > 2$ is considered an outlier worth inspection. RMSZ is the root-mean-square of all Z scores of the bond lengths (or angles).

Mol	Type	Chain	Res	Link	Bond lengths			Bond angles		
					Counts	RMSZ	# Z > 2	Counts	RMSZ	# Z > 2
2	NAG	E	1	1,2	14,14,15	0.64	0	17,19,21	1.12	0
2	NAG	E	2	2	14,14,15	0.60	0	17,19,21	0.79	0
2	NAG	F	1	1,2	14,14,15	0.78	1 (7%)	17,19,21	1.24	3 (17%)
2	NAG	F	2	2	14,14,15	0.68	0	17,19,21	1.00	1 (5%)
2	NAG	G	1	1,2	14,14,15	0.74	1 (7%)	17,19,21	1.37	3 (17%)
2	NAG	G	2	2	14,14,15	0.51	0	17,19,21	3.06	5 (29%)

Mol	Type	Chain	Res	Link	Bond lengths			Bond angles		
					Counts	RMSZ	# Z > 2	Counts	RMSZ	# Z > 2
2	NAG	H	1	1,2	14,14,15	0.80	1 (7%)	17,19,21	0.99	2 (11%)
2	NAG	H	2	2	14,14,15	0.50	0	17,19,21	1.09	1 (5%)

In the following table, the Chirals column lists the number of chiral outliers, the number of chiral centers analysed, the number of these observed in the model and the number defined in the Chemical Component Dictionary. Similar counts are reported in the Torsion and Rings columns. '-' means no outliers of that kind were identified.

Mol	Type	Chain	Res	Link	Chirals	Torsions	Rings
2	NAG	E	1	1,2	-	0/6/23/26	0/1/1/1
2	NAG	E	2	2	-	2/6/23/26	0/1/1/1
2	NAG	F	1	1,2	-	0/6/23/26	0/1/1/1
2	NAG	F	2	2	-	2/6/23/26	0/1/1/1
2	NAG	G	1	1,2	-	0/6/23/26	0/1/1/1
2	NAG	G	2	2	-	0/6/23/26	0/1/1/1
2	NAG	H	1	1,2	-	0/6/23/26	0/1/1/1
2	NAG	H	2	2	-	2/6/23/26	0/1/1/1

All (3) bond length outliers are listed below:

Mol	Chain	Res	Type	Atoms	Z	Observed(Å)	Ideal(Å)
2	F	1	NAG	O5-C1	-2.31	1.40	1.43
2	G	1	NAG	O5-C1	-2.25	1.40	1.43
2	H	1	NAG	O5-C1	-2.14	1.40	1.43

All (15) bond angle outliers are listed below:

Mol	Chain	Res	Type	Atoms	Z	Observed(°)	Ideal(°)
2	G	2	NAG	C2-N2-C7	-7.19	112.67	122.90
2	G	2	NAG	C4-C3-C2	-5.68	102.69	111.02
2	G	2	NAG	C1-C2-N2	5.47	119.83	110.49
2	G	2	NAG	C1-O5-C5	4.42	118.17	112.19
2	G	2	NAG	O5-C1-C2	-3.75	105.37	111.29
2	G	1	NAG	C2-N2-C7	-2.99	118.65	122.90
2	F	2	NAG	C1-O5-C5	2.76	115.92	112.19
2	F	1	NAG	C3-C4-C5	-2.71	105.41	110.24
2	H	2	NAG	C1-O5-C5	2.68	115.82	112.19
2	G	1	NAG	C3-C4-C5	-2.63	105.54	110.24
2	F	1	NAG	O5-C1-C2	-2.60	107.19	111.29
2	G	1	NAG	O5-C1-C2	-2.47	107.39	111.29
2	H	1	NAG	C2-N2-C7	-2.35	119.55	122.90

Continued on next page...

Continued from previous page...

Mol	Chain	Res	Type	Atoms	Z	Observed(°)	Ideal(°)
2	H	1	NAG	O5-C1-C2	-2.32	107.62	111.29
2	F	1	NAG	C2-N2-C7	-2.31	119.61	122.90

There are no chirality outliers.

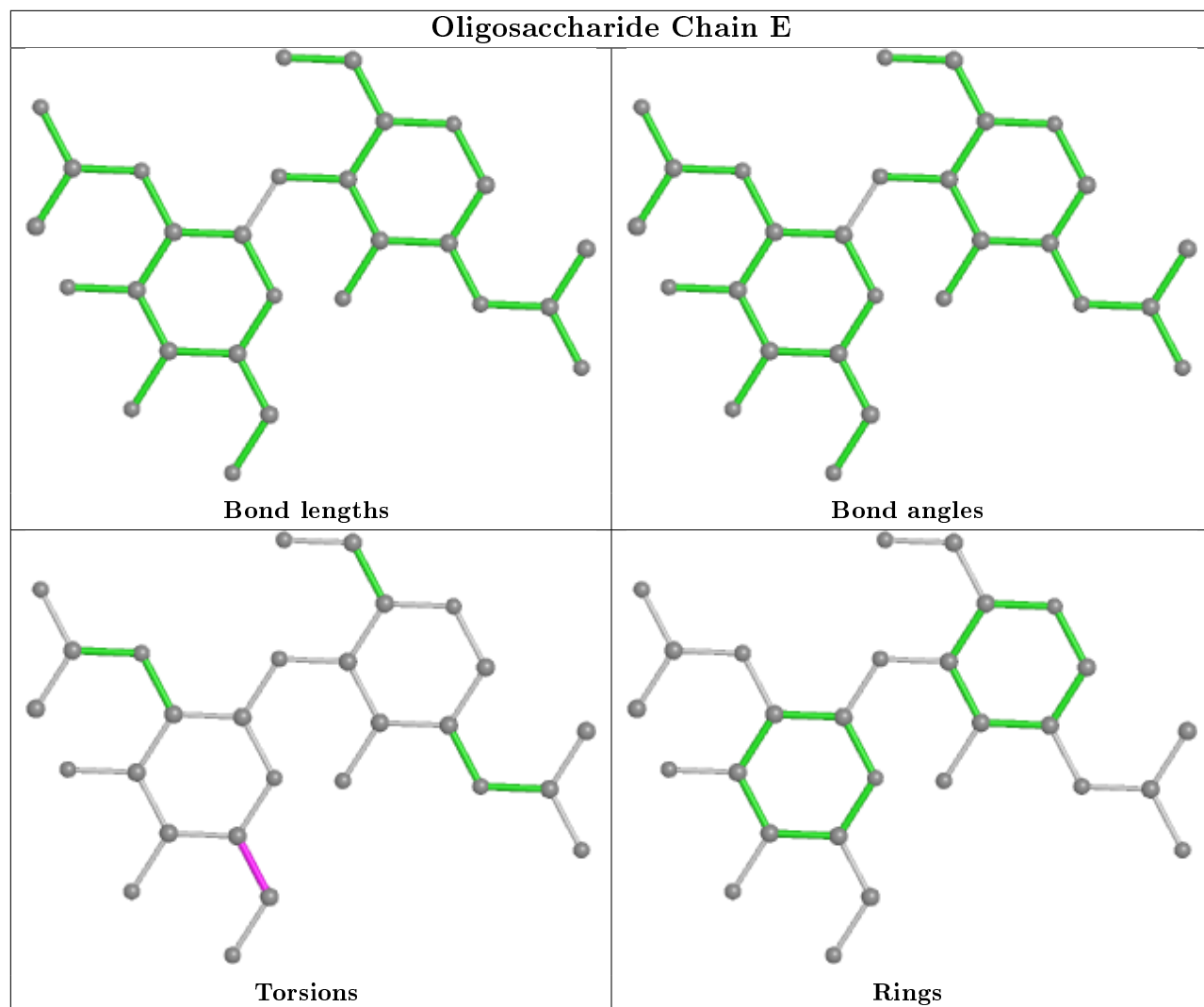
All (6) torsion outliers are listed below:

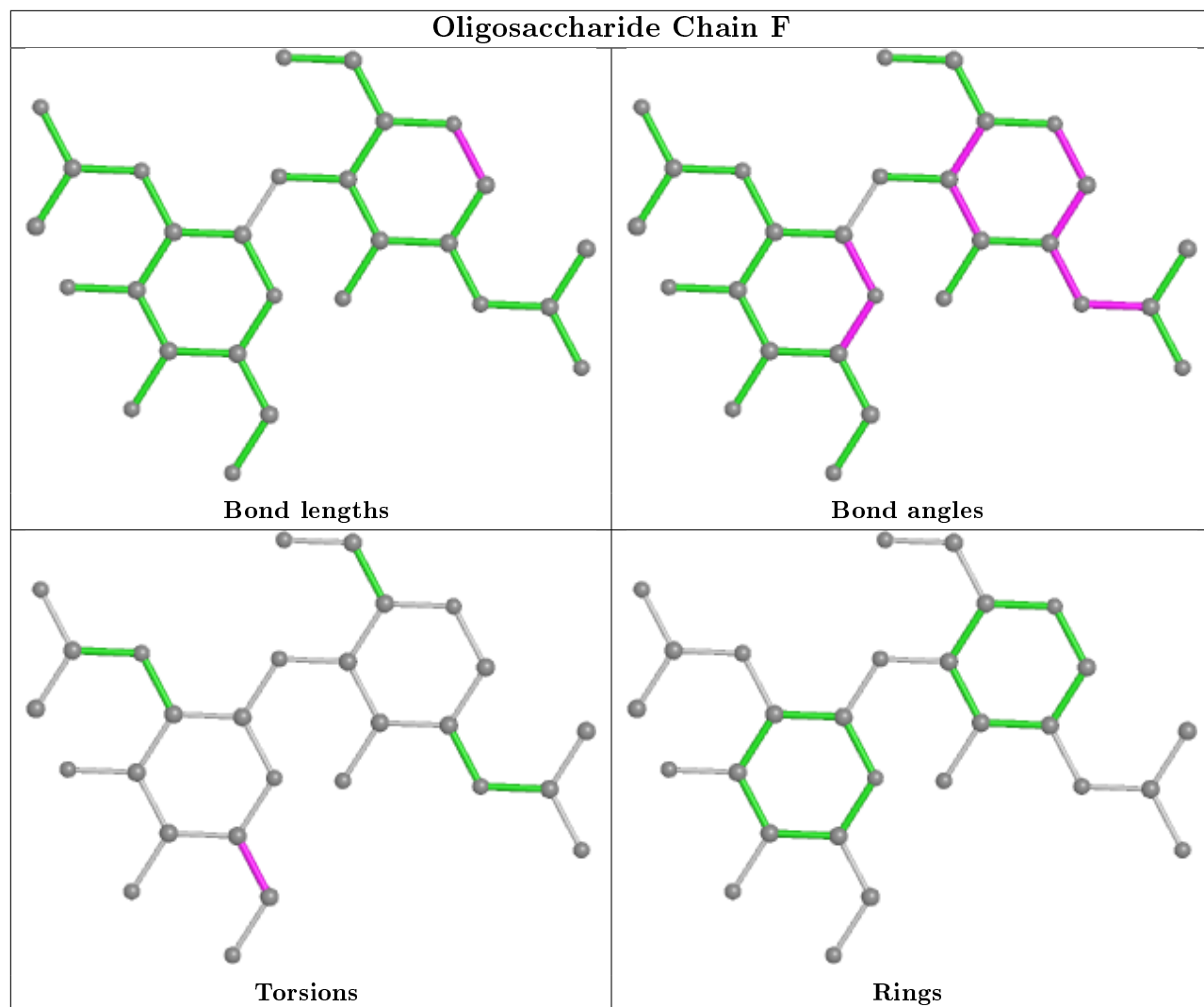
Mol	Chain	Res	Type	Atoms
2	F	2	NAG	O5-C5-C6-O6
2	E	2	NAG	O5-C5-C6-O6
2	F	2	NAG	C4-C5-C6-O6
2	E	2	NAG	C4-C5-C6-O6
2	H	2	NAG	C4-C5-C6-O6
2	H	2	NAG	O5-C5-C6-O6

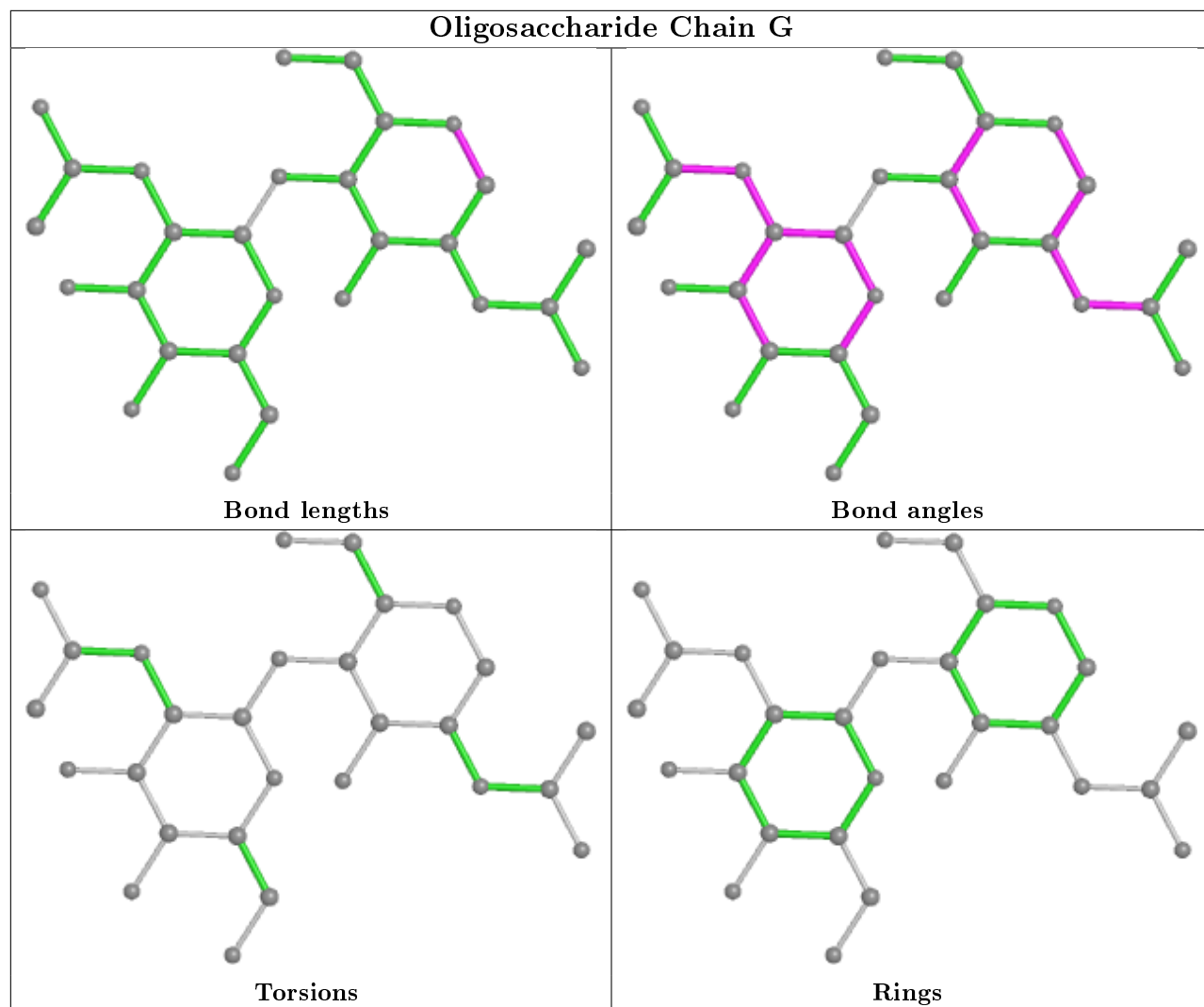
There are no ring outliers.

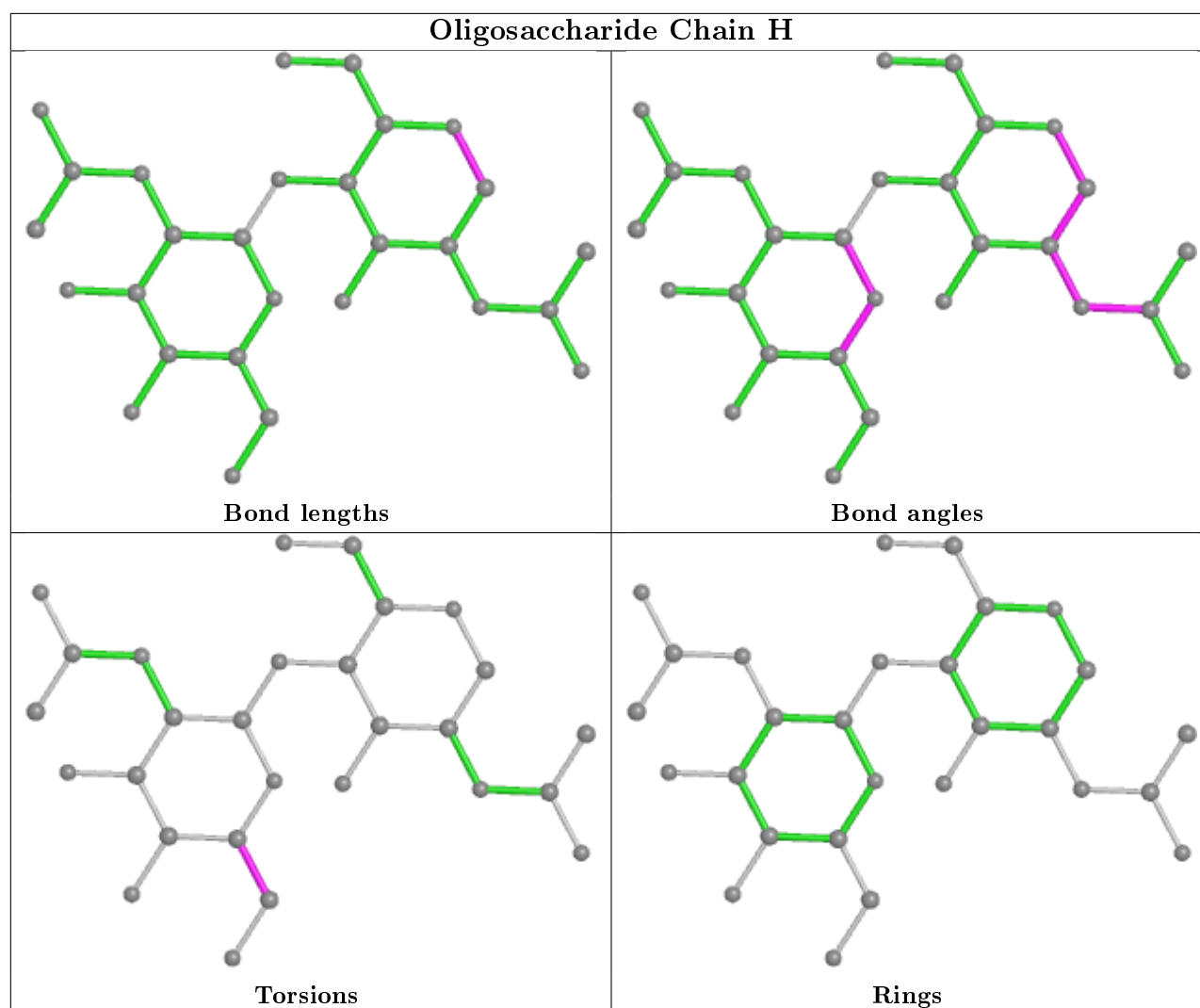
No monomer is involved in short contacts.

The following is a two-dimensional graphical depiction of Mogul quality analysis of bond lengths, bond angles, torsion angles, and ring geometry for oligosaccharide.









5.6 Ligand geometry [i](#)

Of 56 ligands modelled in this entry, 12 are monoatomic - leaving 44 for Mogul analysis.

In the following table, the Counts columns list the number of bonds (or angles) for which Mogul statistics could be retrieved, the number of bonds (or angles) that are observed in the model and the number of bonds (or angles) that are defined in the Chemical Component Dictionary. The Link column lists molecule types, if any, to which the group is linked. The Z score for a bond length (or angle) is the number of standard deviations the observed value is removed from the expected value. A bond length (or angle) with $|Z| > 2$ is considered an outlier worth inspection. RMSZ is the root-mean-square of all Z scores of the bond lengths (or angles).

Mol	Type	Chain	Res	Link	Bond lengths			Bond angles		
					Counts	RMSZ	$\# Z > 2$	Counts	RMSZ	$\# Z > 2$
3	NAG	A	1081	1	14,14,15	0.65	0	17,19,21	0.99	0
3	NAG	C	1081	1	14,14,15	0.53	0	17,19,21	1.33	2 (11%)
3	NAG	C	1309	1	14,14,15	0.61	0	17,19,21	1.06	2 (11%)

Mol	Type	Chain	Res	Link	Bond lengths			Bond angles		
					Counts	RMSZ	# Z > 2	Counts	RMSZ	# Z > 2
6	SO4	D	840	-	4,4,4	0.18	0	6,6,6	0.20	0
3	NAG	D	1191	1	14,14,15	0.50	0	17,19,21	0.81	0
3	NAG	B	1191	1	14,14,15	0.55	0	17,19,21	1.09	1 (5%)
3	NAG	B	1434	1	14,14,15	0.58	0	17,19,21	0.87	1 (5%)
6	SO4	B	820	-	4,4,4	0.22	0	6,6,6	0.21	0
6	SO4	C	830	-	4,4,4	0.27	0	6,6,6	0.20	0
6	SO4	C	834	-	4,4,4	0.11	0	6,6,6	0.23	0
6	SO4	D	842	-	4,4,4	0.14	0	6,6,6	0.21	0
3	NAG	D	1309	1	14,14,15	0.62	0	17,19,21	1.08	1 (5%)
6	SO4	C	836	-	4,4,4	0.19	0	6,6,6	0.14	0
6	SO4	A	812	-	4,4,4	0.21	0	6,6,6	0.17	0
6	SO4	B	821	-	4,4,4	0.45	0	6,6,6	0.87	0
6	SO4	D	841	-	4,4,4	0.26	0	6,6,6	0.65	0
6	SO4	C	833	-	4,4,4	0.12	0	6,6,6	0.22	0
6	SO4	A	810	-	4,4,4	0.33	0	6,6,6	0.14	0
6	SO4	A	815	-	4,4,4	0.27	0	6,6,6	0.25	0
3	NAG	B	1081	1	14,14,15	0.47	0	17,19,21	1.45	3 (17%)
3	NAG	D	1081	1	14,14,15	0.72	0	17,19,21	1.13	1 (5%)
3	NAG	D	1434	1	14,14,15	0.56	0	17,19,21	1.04	1 (5%)
6	SO4	D	844	-	4,4,4	0.11	0	6,6,6	0.22	0
6	SO4	D	843	-	4,4,4	0.14	0	6,6,6	0.35	0
6	SO4	A	813	-	4,4,4	0.19	0	6,6,6	0.17	0
6	SO4	D	845	-	4,4,4	0.21	0	6,6,6	0.18	0
6	SO4	B	823	-	4,4,4	0.35	0	6,6,6	0.56	0
6	SO4	D	846	-	4,4,4	0.13	0	6,6,6	0.08	0
6	SO4	B	824	-	4,4,4	0.19	0	6,6,6	0.16	0
3	NAG	A	1309	1	14,14,15	0.57	0	17,19,21	0.92	1 (5%)
3	NAG	C	1434	1	14,14,15	0.54	0	17,19,21	0.79	0
3	NAG	B	1309	1	14,14,15	0.58	0	17,19,21	0.75	0
6	SO4	C	831	-	4,4,4	0.33	0	6,6,6	0.45	0
6	SO4	B	825	-	4,4,4	0.15	0	6,6,6	0.14	0
6	SO4	A	816	-	4,4,4	0.15	0	6,6,6	0.12	0
6	SO4	A	811	-	4,4,4	0.42	0	6,6,6	0.82	0
6	SO4	B	826	-	4,4,4	0.15	0	6,6,6	0.12	0
6	SO4	B	822	-	4,4,4	0.21	0	6,6,6	0.18	0
6	SO4	C	832	-	4,4,4	0.19	0	6,6,6	0.21	0
3	NAG	C	1191	1	14,14,15	0.54	0	17,19,21	1.19	2 (11%)
6	SO4	C	835	-	4,4,4	0.23	0	6,6,6	0.12	0
3	NAG	A	1191	1	14,14,15	0.71	0	17,19,21	1.12	1 (5%)
6	SO4	A	814	-	4,4,4	0.20	0	6,6,6	0.32	0
3	NAG	A	1434	1	14,14,15	0.54	0	17,19,21	1.19	3 (17%)

In the following table, the Chirals column lists the number of chiral outliers, the number of chiral centers analysed, the number of these observed in the model and the number defined in the Chemical Component Dictionary. Similar counts are reported in the Torsion and Rings columns. '-' means no outliers of that kind were identified.

Mol	Type	Chain	Res	Link	Chirals	Torsions	Rings
3	NAG	D	1309	1	-	0/6/23/26	0/1/1/1
3	NAG	D	1081	1	-	0/6/23/26	0/1/1/1
3	NAG	A	1081	1	-	2/6/23/26	0/1/1/1
3	NAG	C	1081	1	-	2/6/23/26	0/1/1/1
3	NAG	C	1309	1	-	2/6/23/26	0/1/1/1
3	NAG	D	1191	1	-	0/6/23/26	0/1/1/1
3	NAG	B	1191	1	-	2/6/23/26	0/1/1/1
3	NAG	B	1434	1	-	2/6/23/26	0/1/1/1
3	NAG	B	1309	1	-	0/6/23/26	0/1/1/1
3	NAG	D	1434	1	-	2/6/23/26	0/1/1/1
3	NAG	A	1191	1	-	2/6/23/26	0/1/1/1
3	NAG	C	1191	1	-	0/6/23/26	0/1/1/1
3	NAG	A	1309	1	-	0/6/23/26	0/1/1/1
3	NAG	B	1081	1	-	0/6/23/26	0/1/1/1
3	NAG	A	1434	1	-	2/6/23/26	0/1/1/1
3	NAG	C	1434	1	-	2/6/23/26	0/1/1/1

There are no bond length outliers.

All (19) bond angle outliers are listed below:

Mol	Chain	Res	Type	Atoms	Z	Observed(°)	Ideal(°)
3	B	1081	NAG	O5-C1-C2	-3.84	105.22	111.29
3	B	1191	NAG	O5-C5-C6	3.09	112.04	107.20
3	D	1081	NAG	C4-C3-C2	2.87	115.23	111.02
3	C	1081	NAG	C3-C4-C5	2.86	115.34	110.24
3	B	1081	NAG	C1-C2-N2	2.63	114.97	110.49
3	C	1081	NAG	O5-C1-C2	-2.58	107.21	111.29
3	A	1434	NAG	O5-C5-C6	2.57	111.23	107.20
3	A	1191	NAG	O5-C5-C6	2.57	111.23	107.20
3	C	1191	NAG	C6-C5-C4	-2.55	107.03	113.00
3	C	1191	NAG	O5-C1-C2	-2.52	107.31	111.29
3	D	1434	NAG	O5-C1-C2	-2.41	107.48	111.29
3	C	1309	NAG	O5-C1-C2	-2.38	107.53	111.29
3	C	1309	NAG	C1-O5-C5	2.30	115.31	112.19
3	A	1434	NAG	C2-N2-C7	-2.26	119.69	122.90
3	A	1309	NAG	O5-C1-C2	-2.23	107.76	111.29

Continued on next page...

Continued from previous page...

Mol	Chain	Res	Type	Atoms	Z	Observed(°)	Ideal(°)
3	B	1081	NAG	O5-C5-C6	2.21	110.67	107.20
3	A	1434	NAG	O5-C1-C2	-2.14	107.91	111.29
3	D	1309	NAG	O5-C5-C6	2.05	110.42	107.20
3	B	1434	NAG	O5-C1-C2	-2.05	108.05	111.29

There are no chirality outliers.

All (18) torsion outliers are listed below:

Mol	Chain	Res	Type	Atoms
3	B	1191	NAG	O5-C5-C6-O6
3	A	1434	NAG	O5-C5-C6-O6
3	C	1434	NAG	O5-C5-C6-O6
3	A	1081	NAG	C8-C7-N2-C2
3	D	1434	NAG	O5-C5-C6-O6
3	B	1191	NAG	C4-C5-C6-O6
3	A	1434	NAG	C4-C5-C6-O6
3	C	1434	NAG	C4-C5-C6-O6
3	D	1434	NAG	C4-C5-C6-O6
3	A	1191	NAG	O5-C5-C6-O6
3	A	1191	NAG	C4-C5-C6-O6
3	A	1081	NAG	O7-C7-N2-C2
3	C	1309	NAG	O5-C5-C6-O6
3	C	1309	NAG	C4-C5-C6-O6
3	B	1434	NAG	C4-C5-C6-O6
3	B	1434	NAG	O5-C5-C6-O6
3	C	1081	NAG	C3-C2-N2-C7
3	C	1081	NAG	C4-C5-C6-O6

There are no ring outliers.

No monomer is involved in short contacts.

5.7 Other polymers [i](#)

There are no such residues in this entry.

5.8 Polymer linkage issues [i](#)

There are no chain breaks in this entry.

6 Fit of model and data ⓘ

6.1 Protein, DNA and RNA chains ⓘ

In the following table, the column labelled ‘#RSRZ> 2’ contains the number (and percentage) of RSRZ outliers, followed by percent RSRZ outliers for the chain as percentile scores relative to all X-ray entries and entries of similar resolution. The OWAB column contains the minimum, median, 95th percentile and maximum values of the occupancy-weighted average B-factor per residue. The column labelled ‘Q< 0.9’ lists the number of (and percentage) of residues with an average occupancy less than 0.9.

Mol	Chain	Analysed	<RSRZ>	#RSRZ>2	OWAB(Å ²)	Q<0.9
1	A	734/787 (93%)	-0.32	15 (2%) 65 67	9, 15, 30, 68	2 (0%)
1	B	734/787 (93%)	-0.35	21 (2%) 51 52	8, 13, 30, 63	2 (0%)
1	C	734/787 (93%)	-0.33	19 (2%) 56 56	8, 13, 31, 65	3 (0%)
1	D	734/787 (93%)	-0.30	16 (2%) 62 63	9, 15, 30, 71	2 (0%)
All	All	2936/3148 (93%)	-0.32	71 (2%) 59 59	8, 14, 30, 71	9 (0%)

All (71) RSRZ outliers are listed below:

Mol	Chain	Res	Type	RSRZ
1	A	41	ALA	9.4
1	D	41	ALA	9.0
1	C	41	ALA	8.4
1	B	41	ALA	8.4
1	A	739	ASP	7.7
1	D	740	GLU	6.8
1	D	739	ASP	6.7
1	A	740	GLU	5.4
1	C	740	GLU	4.9
1	A	741	THR	4.9
1	C	739	ASP	4.6
1	B	739	ASP	4.5
1	B	740	GLU	4.4
1	D	742	GLU	4.3
1	A	149	ASP	4.1
1	A	742	GLU	4.0
1	C	149	ASP	4.0
1	B	311	SER	3.6
1	C	774	THR	3.5
1	C	150	GLU	3.5
1	C	311	SER	3.4

Continued on next page...

Continued from previous page...

Mol	Chain	Res	Type	RSRZ
1	C	288	ASP	3.4
1	B	774	THR	3.4
1	A	288	ASP	3.3
1	B	149	ASP	3.3
1	D	115	ASP	3.2
1	A	770	TYR	3.2
1	A	456	ALA	3.2
1	C	743	GLU	3.2
1	B	288	ASP	3.1
1	D	741	THR	3.1
1	D	770	TYR	3.0
1	B	771	GLY	3.0
1	C	42	SER	3.0
1	D	149	ASP	2.9
1	C	770	TYR	2.9
1	D	288	ASP	2.9
1	C	742	GLU	2.9
1	A	150	GLU	2.9
1	A	42	SER	2.8
1	C	310	ASP	2.8
1	D	775	ARG	2.8
1	B	742	GLU	2.8
1	D	738	ASP	2.8
1	D	150	GLU	2.7
1	A	738	ASP	2.6
1	B	775	ARG	2.5
1	B	769	THR	2.5
1	C	456	ALA	2.4
1	B	115	ASP	2.4
1	D	42	SER	2.3
1	C	289	ASP	2.3
1	C	115	ASP	2.3
1	B	289	ASP	2.3
1	C	775	ARG	2.3
1	B	770	TYR	2.3
1	A	115	ASP	2.3
1	B	772	ARG	2.2
1	B	741	THR	2.2
1	A	743	GLU	2.2
1	B	150	GLU	2.2
1	D	737	TYR	2.2
1	B	310	ASP	2.2

Continued on next page...

Continued from previous page...

Mol	Chain	Res	Type	RSRZ
1	B	42	SER	2.1
1	C	133	GLU	2.1
1	B	133	GLU	2.1
1	B	743	GLU	2.0
1	C	772	ARG	2.0
1	A	133	GLU	2.0
1	D	769	THR	2.0
1	D	289	ASP	2.0

6.2 Non-standard residues in protein, DNA, RNA chains [i](#)

In the following table, the Atoms column lists the number of modelled atoms in the group and the number defined in the chemical component dictionary. The B-factors column lists the minimum, median, 95th percentile and maximum values of B factors of atoms in the group. The column labelled 'Q< 0.9' lists the number of atoms with occupancy less than 0.9.

Mol	Type	Chain	Res	Atoms	RSCC	RSR	B-factors(Å ²)	Q<0.9
1	TPQ	C	478	14/15	0.93	0.17	13,23,46,53	0
1	TPQ	D	478	14/15	0.94	0.15	14,28,48,51	0
1	TPQ	B	478	14/15	0.94	0.13	12,23,45,52	0
1	TPQ	A	478	14/15	0.94	0.12	12,26,46,52	0

6.3 Carbohydrates [i](#)

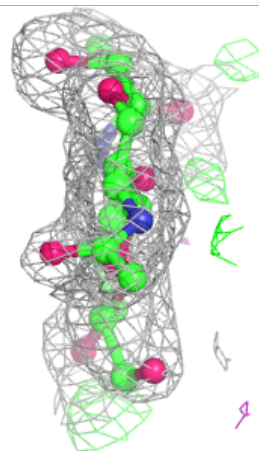
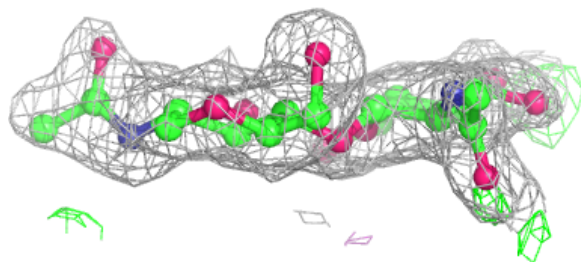
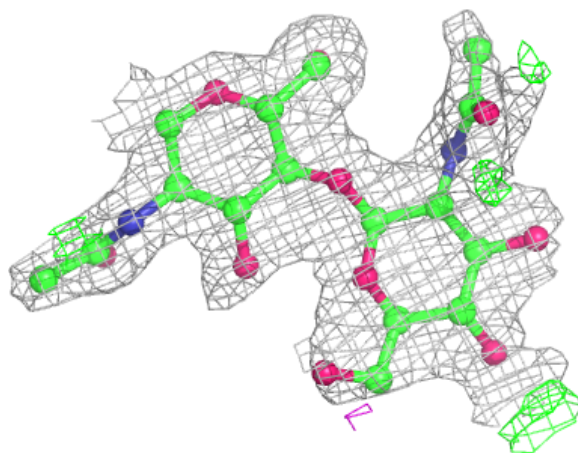
In the following table, the Atoms column lists the number of modelled atoms in the group and the number defined in the chemical component dictionary. The B-factors column lists the minimum, median, 95th percentile and maximum values of B factors of atoms in the group. The column labelled 'Q< 0.9' lists the number of atoms with occupancy less than 0.9.

Mol	Type	Chain	Res	Atoms	RSCC	RSR	B-factors(Å ²)	Q<0.9
2	NAG	F	2	14/15	0.59	0.30	30,44,53,56	0
2	NAG	G	2	14/15	0.77	0.26	28,38,56,58	0
2	NAG	H	2	14/15	0.83	0.20	38,46,53,54	0
2	NAG	E	2	14/15	0.87	0.20	36,44,52,54	0
2	NAG	H	1	14/15	0.91	0.14	16,30,38,39	0
2	NAG	E	1	14/15	0.93	0.10	22,30,39,45	0
2	NAG	F	1	14/15	0.93	0.10	15,23,30,37	0
2	NAG	G	1	14/15	0.94	0.10	16,24,36,37	0

The following is a graphical depiction of the model fit to experimental electron density for oligosaccharide. Each fit is shown from different orientation to approximate a three-dimensional view.

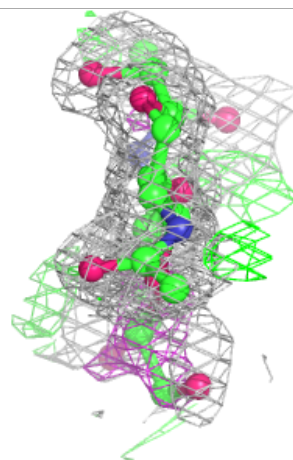
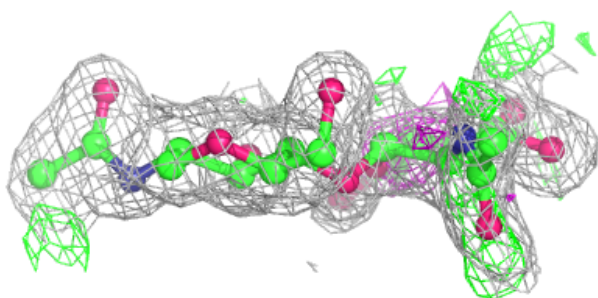
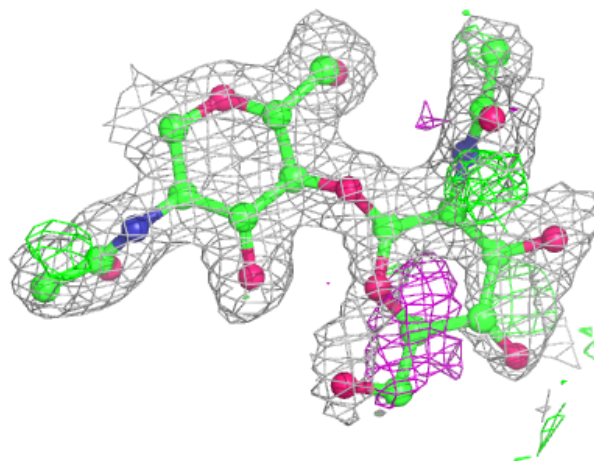
Electron density around Chain E:

$2mF_o-DF_c$ (at 0.7 rmsd) in gray
 mF_o-DF_c (at 3 rmsd) in purple (negative)
and green (positive)



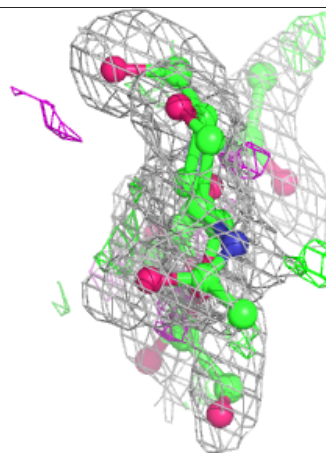
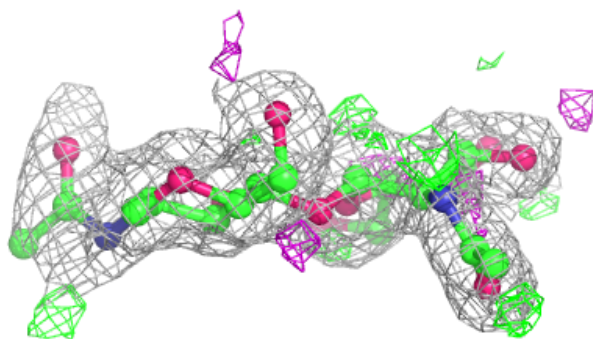
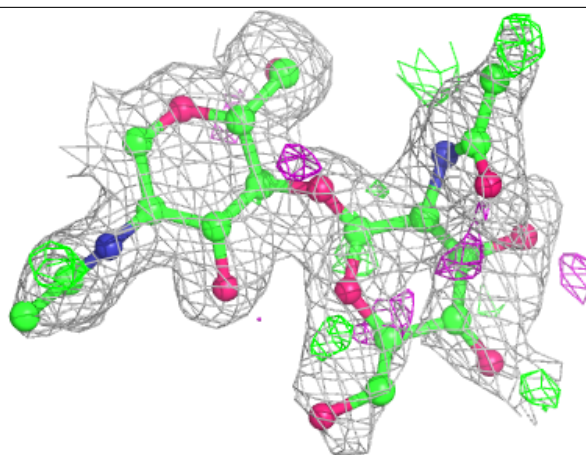
Electron density around Chain F:

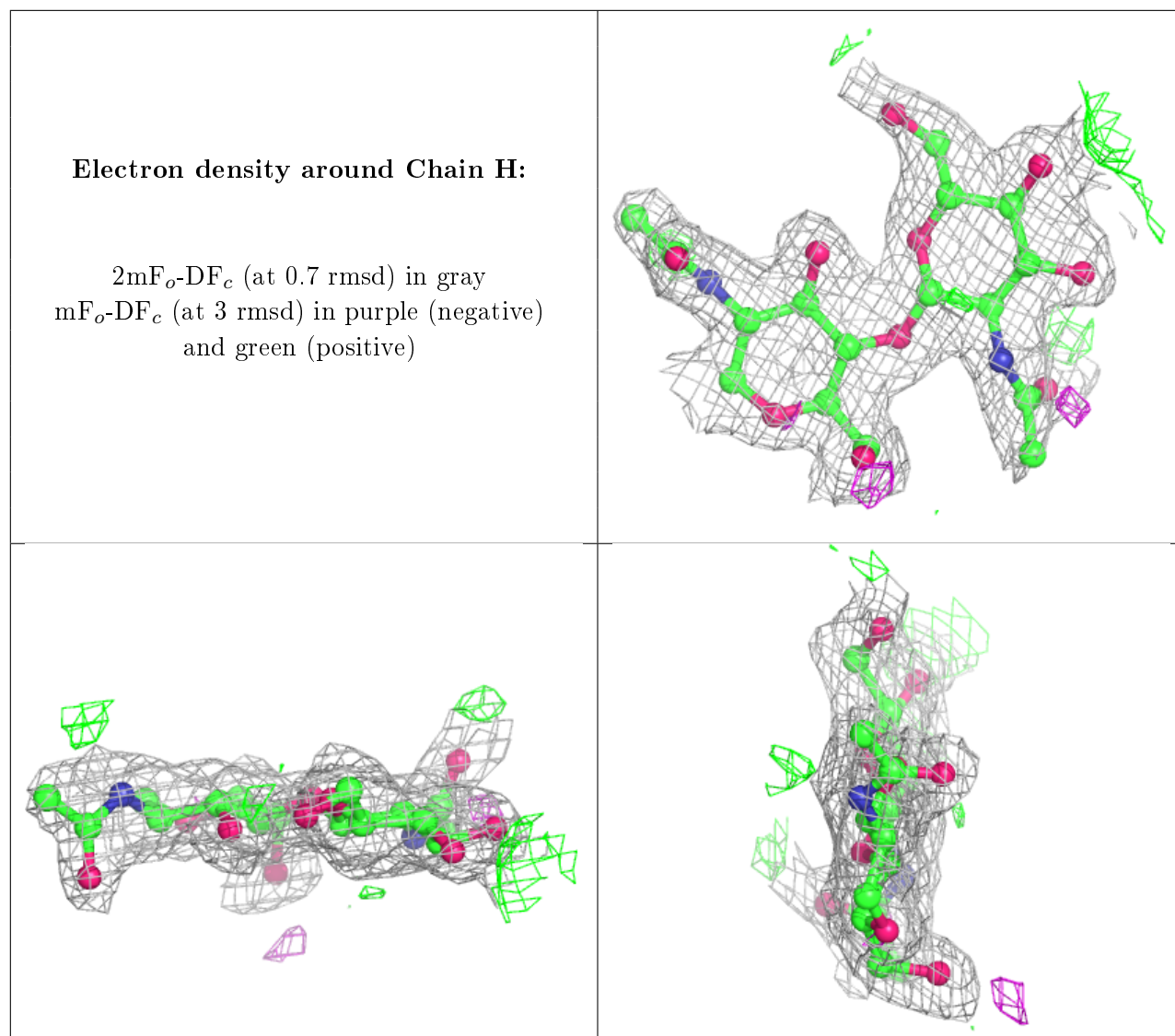
$2mF_o-DF_c$ (at 0.7 rmsd) in gray
 mF_o-DF_c (at 3 rmsd) in purple (negative)
and green (positive)



Electron density around Chain G:

$2mF_o-DF_c$ (at 0.7 rmsd) in gray
 mF_o-DF_c (at 3 rmsd) in purple (negative)
and green (positive)





6.4 Ligands ⓘ

In the following table, the Atoms column lists the number of modelled atoms in the group and the number defined in the chemical component dictionary. The B-factors column lists the minimum, median, 95th percentile and maximum values of B factors of atoms in the group. The column labelled 'Q< 0.9' lists the number of atoms with occupancy less than 0.9.

Mol	Type	Chain	Res	Atoms	RSCC	RSR	B-factors(Å ²)	Q<0.9
3	NAG	A	1434	14/15	0.64	0.34	51,62,70,72	0
6	SO4	C	832	5/5	0.71	0.29	38,49,51,59	0
6	SO4	A	816	5/5	0.80	0.26	52,58,63,65	0
6	SO4	B	822	5/5	0.80	0.27	33,44,49,55	0
6	SO4	B	825	5/5	0.86	0.30	15,30,41,43	0
6	SO4	B	826	5/5	0.87	0.26	35,52,56,58	0
3	NAG	A	1191	14/15	0.89	0.15	23,27,37,37	0

Continued on next page...

Continued from previous page...

Mol	Type	Chain	Res	Atoms	RSCC	RSR	B-factors(\AA^2)	Q<0.9
3	NAG	C	1191	14/15	0.94	0.10	12,19,23,25	0
5	CA	D	5802	1/1	0.99	0.05	12,12,12,12	0
4	CU	A	801	1/1	0.99	0.02	16,16,16,16	0
5	CA	C	3803	1/1	1.00	0.04	10,10,10,10	0
6	SO4	A	811	5/5	-	-	10,36,47,52	5
6	SO4	A	814	5/5	0.84	0.37	26,31,45,47	0
4	CU	D	801	1/1	0.99	0.03	17,17,17,17	0
6	SO4	C	831	5/5	-	-	7,39,48,50	5
3	NAG	B	1309	14/15	0.39	0.44	67,75,77,79	0
3	NAG	D	1434	14/15	0.64	0.37	50,63,75,77	0
3	NAG	C	1434	14/15	0.68	0.33	51,64,68,71	0
3	NAG	D	1081	14/15	0.69	0.38	61,70,76,76	0
6	SO4	A	815	5/5	0.76	0.32	23,32,44,48	0
3	NAG	B	1081	14/15	0.79	0.31	36,44,48,50	0
6	SO4	C	835	5/5	0.82	0.27	18,30,45,46	0
6	SO4	D	846	5/5	0.84	0.21	61,62,69,70	0
6	SO4	D	845	5/5	0.85	0.28	20,36,45,47	0
6	SO4	A	810	5/5	0.86	0.20	21,26,29,34	0
3	NAG	A	1309	14/15	0.88	0.16	23,33,42,43	0
6	SO4	D	843	5/5	0.91	0.33	29,39,45,47	0
6	SO4	A	813	5/5	0.91	0.26	22,31,42,42	0
6	SO4	D	844	5/5	0.92	0.30	34,34,43,46	0
6	SO4	B	823	5/5	0.93	0.18	19,30,33,35	0
6	SO4	C	833	5/5	0.93	0.23	23,38,42,42	0
6	SO4	B	824	5/5	0.94	0.27	26,29,36,38	0
4	CU	C	801	1/1	0.99	0.02	16,16,16,16	0
5	CA	A	803	1/1	1.00	0.04	13,13,13,13	0
5	CA	B	1803	1/1	1.00	0.04	10,10,10,10	0
5	CA	C	3802	1/1	1.00	0.06	10,10,10,10	0
6	SO4	B	821	5/5	-	-	7,34,44,51	5
6	SO4	D	841	5/5	-	-	14,37,52,58	5
3	NAG	C	1309	14/15	0.30	0.51	65,69,73,76	0
3	NAG	C	1081	14/15	0.47	0.33	55,66,74,77	0
3	NAG	B	1434	14/15	0.65	0.34	48,61,66,67	0
6	SO4	C	836	5/5	0.74	0.28	44,51,59,61	0
3	NAG	A	1081	14/15	0.77	0.34	45,51,68,71	0
3	NAG	D	1309	14/15	0.81	0.22	30,37,45,46	0
6	SO4	D	840	5/5	0.85	0.23	22,27,32,36	0
6	SO4	D	842	5/5	0.89	0.27	39,46,51,54	0
3	NAG	D	1191	14/15	0.90	0.17	23,28,34,39	0
6	SO4	A	812	5/5	0.91	0.26	30,41,45,48	0
6	SO4	C	834	5/5	0.91	0.24	24,27,35,37	0

Continued on next page...

Continued from previous page...

Mol	Type	Chain	Res	Atoms	RSCC	RSR	B-factors(\AA^2)	Q<0.9
6	SO4	C	830	5/5	0.91	0.20	23,25,26,33	0
3	NAG	B	1191	14/15	0.92	0.12	15,25,30,41	0
6	SO4	B	820	5/5	0.92	0.20	20,26,32,35	0
4	CU	B	801	1/1	0.99	0.03	16,16,16,16	0
5	CA	D	5803	1/1	0.99	0.04	14,14,14,14	0
5	CA	B	1802	1/1	1.00	0.04	8,8,8,8	0
5	CA	A	802	1/1	1.00	0.04	11,11,11,11	0

6.5 Other polymers [i](#)

There are no such residues in this entry.