



Full wwPDB X-ray Structure Validation Report ⓘ

May 27, 2020 – 11:30 pm BST

PDB ID : 3N9O
Title : ceKDM7A from C.elegans, complex with H3K4me3 peptide, H3K9me2 peptide and NOG
Authors : Yang, Y.; Hu, L.; Wang, P.; Hou, H.; Chen, C.D.; Xu, Y.
Deposited on : 2010-05-31
Resolution : 2.31 Å(reported)

This is a Full wwPDB X-ray Structure Validation Report for a publicly released PDB entry.

We welcome your comments at validation@mail.wwpdb.org

A user guide is available at

<https://www.wwpdb.org/validation/2017/XrayValidationReportHelp>

with specific help available everywhere you see the ⓘ symbol.

The following versions of software and data (see [references ⓘ](#)) were used in the production of this report:

MolProbity : 4.02b-467
Mogul : 1.8.5 (274361), CSD as541be (2020)
Xtriage (Phenix) : 1.13
EDS : 2.11
Percentile statistics : 20191225.v01 (using entries in the PDB archive December 25th 2019)
Refmac : 5.8.0158
CCP4 : 7.0.044 (Gargrove)
Ideal geometry (proteins) : Engh & Huber (2001)
Ideal geometry (DNA, RNA) : Parkinson et al. (1996)
Validation Pipeline (wwPDB-VP) : 2.11

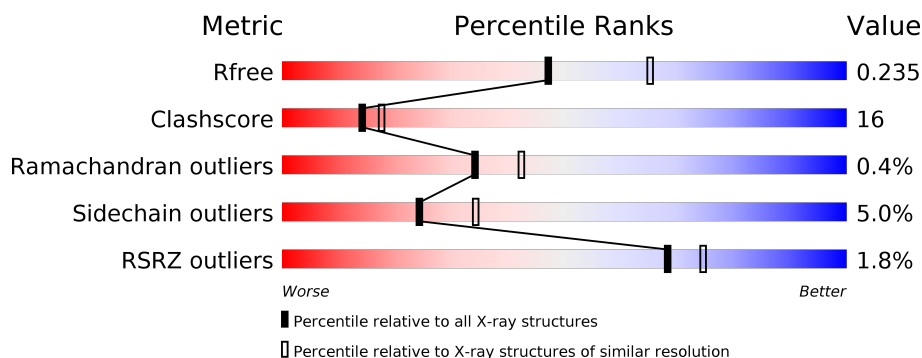
1 Overall quality at a glance

The following experimental techniques were used to determine the structure:

X-RAY DIFFRACTION

The reported resolution of this entry is 2.31 Å.

Percentile scores (ranging between 0-100) for global validation metrics of the entry are shown in the following graphic. The table shows the number of entries on which the scores are based.



Metric	Whole archive (#Entries)	Similar resolution (#Entries, resolution range(Å))
R_{free}	130704	5042 (2.30-2.30)
Clashscore	141614	5643 (2.30-2.30)
Ramachandran outliers	138981	5575 (2.30-2.30)
Sidechain outliers	138945	5575 (2.30-2.30)
RSRZ outliers	127900	4938 (2.30-2.30)

The table below summarises the geometric issues observed across the polymeric chains and their fit to the electron density. The red, orange, yellow and green segments on the lower bar indicate the fraction of residues that contain outliers for ≥ 3 , 2, 1 and 0 types of geometric quality criteria respectively. A grey segment represents the fraction of residues that are not modelled. The numeric value for each fraction is indicated below the corresponding segment, with a dot representing fractions $\leq 5\%$. The upper red bar (where present) indicates the fraction of residues that have poor fit to the electron density. The numeric value is given above the bar.

Mol	Chain	Length	Quality of chain
1	A	528	
2	B	15	
3	C	17	

2 Entry composition

There are 7 unique types of molecules in this entry. The entry contains 4382 atoms, of which 0 are hydrogens and 0 are deuteriums.

In the tables below, the ZeroOcc column contains the number of atoms modelled with zero occupancy, the AltConf column contains the number of residues with at least one atom in alternate conformation and the Trace column contains the number of residues modelled with at most 2 atoms.

- Molecule 1 is a protein called Putative uncharacterized protein.

Mol	Chain	Residues	Atoms					ZeroOcc	AltConf	Trace
1	A	483	Total	C	N	O	S	0	0	0
			3976	2541	666	742	27			

There are 4 discrepancies between the modelled and reference sequences:

Chain	Residue	Modelled	Actual	Comment	Reference
A	184	GLU	-	EXPRESSION TAG	UNP Q9GYI0
A	185	PHE	-	EXPRESSION TAG	UNP Q9GYI0
A	186	HIS	-	EXPRESSION TAG	UNP Q9GYI0
A	187	MET	-	EXPRESSION TAG	UNP Q9GYI0

- Molecule 2 is a protein called Histone H3 peptide.

Mol	Chain	Residues	Atoms				ZeroOcc	AltConf	Trace
2	B	6	Total	C	N	O	0	0	0
			51	31	11	9			

- Molecule 3 is a protein called Histone H3 peptide.

Mol	Chain	Residues	Atoms				ZeroOcc	AltConf	Trace
3	C	8	Total	C	N	O	0	0	0
			65	39	14	12			

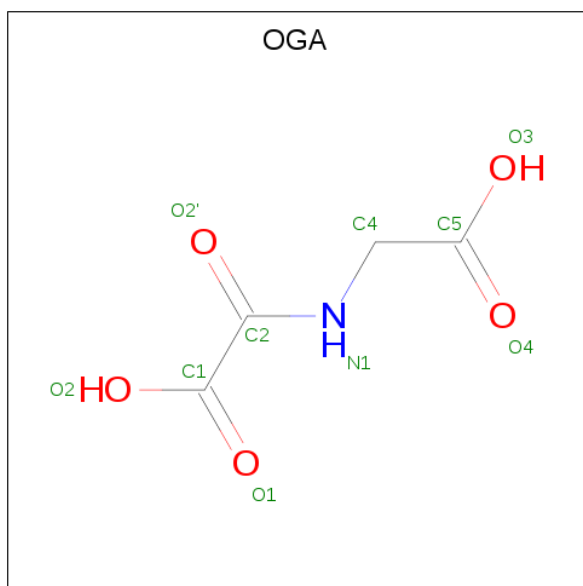
- Molecule 4 is FE (II) ION (three-letter code: FE2) (formula: Fe).

Mol	Chain	Residues	Atoms		ZeroOcc	AltConf
4	A	1	Total	Fe	0	0
			1	1		

- Molecule 5 is ZINC ION (three-letter code: ZN) (formula: Zn).

Mol	Chain	Residues	Atoms		ZeroOcc	AltConf
5	A	2	Total	Zn	0	0
			2	2		

- Molecule 6 is N-OXALYLGLYCINE (three-letter code: OGA) (formula: $C_4H_5NO_5$).

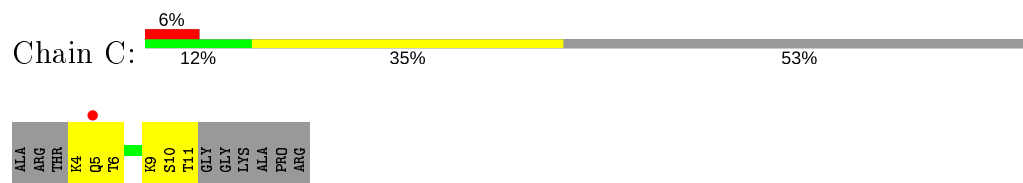


Mol	Chain	Residues	Atoms				ZeroOcc	AltConf
6	A	1	Total	C	N	O	0	0
			10	4	1	5		

- Molecule 7 is water.

Mol	Chain	Residues	Atoms		ZeroOcc	AltConf
7	A	265	Total	O	0	0
			265	265		
7	B	3	Total	O	0	0
			3	3		
7	C	9	Total	O	0	0
			9	9		

- Molecule 1: Putative uncharacterized protein



4 Data and refinement statistics

Property	Value	Source
Space group	P 21 21 21	Depositor
Cell constants a, b, c, α , β , γ	69.09 Å 87.38 Å 102.73 Å 90.00° 90.00° 90.00°	Depositor
Resolution (Å)	44.28 – 2.31 44.28 – 2.31	Depositor EDS
% Data completeness (in resolution range)	98.0 (44.28-2.31) 98.0 (44.28-2.31)	Depositor EDS
R_{merge}	(Not available)	Depositor
R_{sym}	(Not available)	Depositor
$\langle I/\sigma(I) \rangle$ ¹	2.04 (at 2.32 Å)	Xtriage
Refinement program	PHENIX (phenix.refine)	Depositor
R, R_{free}	0.199 , 0.242 0.195 , 0.235	Depositor DCC
R_{free} test set	1383 reflections (5.04%)	wwPDB-VP
Wilson B-factor (Å ²)	39.5	Xtriage
Anisotropy	0.141	Xtriage
Bulk solvent k_{sol} (e/Å ³), B_{sol} (Å ²)	0.32 , 43.6	EDS
L-test for twinning ²	$\langle L \rangle = 0.50$, $\langle L^2 \rangle = 0.33$	Xtriage
Estimated twinning fraction	No twinning to report.	Xtriage
F_o, F_c correlation	0.95	EDS
Total number of atoms	4382	wwPDB-VP
Average B, all atoms (Å ²)	44.0	wwPDB-VP

Xtriage's analysis on translational NCS is as follows: *The largest off-origin peak in the Patterson function is 4.46% of the height of the origin peak. No significant pseudotranslation is detected.*

¹Intensities estimated from amplitudes.

²Theoretical values of $\langle |L| \rangle$, $\langle L^2 \rangle$ for acentric reflections are 0.5, 0.333 respectively for untwinned datasets, and 0.375, 0.2 for perfectly twinned datasets.

5 Model quality [i](#)

5.1 Standard geometry [i](#)

Bond lengths and bond angles in the following residue types are not validated in this section: OGA, ZN, M3L, FE2, MLY

The Z score for a bond length (or angle) is the number of standard deviations the observed value is removed from the expected value. A bond length (or angle) with $|Z| > 5$ is considered an outlier worth inspection. RMSZ is the root-mean-square of all Z scores of the bond lengths (or angles).

Mol	Chain	Bond lengths		Bond angles	
		RMSZ	$\# Z > 5$	RMSZ	$\# Z > 5$
1	A	0.36	0/4079	0.52	1/5507 (0.0%)
2	B	0.28	0/38	0.52	0/50
3	C	0.47	0/53	0.65	0/69
All	All	0.36	0/4170	0.52	1/5626 (0.0%)

There are no bond length outliers.

All (1) bond angle outliers are listed below:

Mol	Chain	Res	Type	Atoms	Z	Observed(°)	Ideal(°)
1	A	275	VAL	CB-CA-C	-6.50	99.04	111.40

There are no chirality outliers.

There are no planarity outliers.

5.2 Too-close contacts [i](#)

In the following table, the Non-H and H(model) columns list the number of non-hydrogen atoms and hydrogen atoms in the chain respectively. The H(added) column lists the number of hydrogen atoms added and optimized by MolProbity. The Clashes column lists the number of clashes within the asymmetric unit, whereas Symm-Clashes lists symmetry related clashes.

Mol	Chain	Non-H	H(model)	H(added)	Clashes	Symm-Clashes
1	A	3976	0	3832	120	0
2	B	51	0	60	3	0
3	C	65	0	73	13	0
4	A	1	0	0	0	0
5	A	2	0	0	0	0
6	A	10	0	4	2	0
7	A	265	0	0	19	2

Continued on next page...

Continued from previous page...

Mol	Chain	Non-H	H(model)	H(added)	Clashes	Symm-Clashes
7	B	3	0	0	0	0
7	C	9	0	0	5	0
All	All	4382	0	3969	126	2

The all-atom clashscore is defined as the number of clashes found per 1000 atoms (including hydrogen atoms). The all-atom clashscore for this structure is 16.

All (126) close contacts within the same asymmetric unit are listed below, sorted by their clash magnitude.

Atom-1	Atom-2	Interatomic distance (Å)	Clash overlap (Å)
3:C:4:LYS:HG3	7:C:240:HOH:O	1.60	0.98
1:A:441:ARG:HH11	1:A:441:ARG:HG3	1.30	0.95
1:A:468:GLU:HB3	7:A:763:HOH:O	1.69	0.91
1:A:461:TYR:OH	7:A:48:HOH:O	1.93	0.84
1:A:657:LYS:HD2	1:A:694:ILE:HD12	1.61	0.82
1:A:429:ASP:OD1	7:A:787:HOH:O	1.95	0.82
1:A:341:ARG:NH2	7:A:162:HOH:O	2.13	0.81
1:A:688:ILE:HB	7:A:152:HOH:O	1.80	0.80
1:A:430:ASN:HD22	1:A:433:MET:H	1.30	0.79
1:A:275:VAL:O	1:A:275:VAL:CG1	2.33	0.77
1:A:275:VAL:HA	1:A:278:THR:HG22	1.67	0.77
1:A:274:CYS:O	1:A:275:VAL:HB	1.85	0.76
1:A:267:GLU:OE2	7:A:753:HOH:O	2.04	0.76
1:A:648:ASN:HD22	1:A:648:ASN:H	1.33	0.76
1:A:648:ASN:HD22	1:A:648:ASN:N	1.86	0.73
1:A:275:VAL:N	1:A:278:THR:HG22	2.05	0.72
3:C:4:LYS:CG	7:C:240:HOH:O	2.26	0.72
1:A:241:TRP:HB2	2:B:4:M3L:HG3	1.71	0.72
3:C:4:LYS:N	7:C:240:HOH:O	2.24	0.71
1:A:685:LYS:O	7:A:152:HOH:O	2.09	0.71
1:A:305:GLU:OE2	1:A:536:THR:HG21	1.91	0.71
1:A:275:VAL:H	1:A:278:THR:HG22	1.55	0.70
1:A:465:LEU:HD23	1:A:470:TYR:HB2	1.74	0.70
1:A:275:VAL:O	1:A:275:VAL:HG12	1.91	0.69
1:A:237:ASN:HD22	1:A:254:LEU:HG	1.58	0.68
1:A:593:ARG:NH2	7:A:64:HOH:O	2.28	0.67
1:A:531:GLU:O	3:C:4:LYS:HE2	1.94	0.67
1:A:685:LYS:C	7:A:152:HOH:O	2.32	0.66
1:A:274:CYS:HA	1:A:277:HIS:CE1	2.30	0.66
1:A:430:ASN:ND2	1:A:433:MET:H	1.93	0.66
1:A:441:ARG:NH1	1:A:441:ARG:HG3	2.03	0.66

Continued on next page...

Continued from previous page...

Atom-1	Atom-2	Interatomic distance (Å)	Clash overlap (Å)
1:A:248:GLN:O	7:A:773:HOH:O	2.13	0.66
1:A:308:SER:O	1:A:312:ILE:HG13	1.96	0.65
1:A:688:ILE:N	7:A:152:HOH:O	2.28	0.65
1:A:604:GLU:O	7:A:799:HOH:O	2.15	0.62
1:A:369:PRO:HG3	1:A:436:ILE:CG2	2.28	0.62
1:A:694:ILE:O	1:A:698:THR:HG23	1.99	0.62
1:A:665:ASP:OD2	1:A:669:ARG:NH1	2.33	0.61
1:A:238:ASP:HB3	1:A:240:GLN:HG3	1.82	0.60
1:A:379:VAL:HG11	1:A:407:ARG:HD3	1.84	0.60
1:A:657:LYS:HD2	1:A:694:ILE:CD1	2.30	0.60
1:A:369:PRO:HG3	1:A:436:ILE:HG22	1.85	0.58
1:A:468:GLU:CA	7:A:763:HOH:O	2.52	0.57
1:A:563:ALA:H	1:A:587:ASN:ND2	2.01	0.57
1:A:253:PHE:HD2	1:A:263:TYR:CE1	2.23	0.57
1:A:482:PHE:HZ	3:C:11:THR:HG22	1.70	0.56
1:A:641:ASP:OD1	1:A:643:ARG:HD3	2.05	0.56
1:A:643:ARG:HD2	1:A:701:GLN:CD	2.27	0.56
3:C:5:GLN:HG2	3:C:5:GLN:O	2.06	0.56
1:A:482:PHE:CD2	3:C:9:MLY:HE3	2.41	0.56
1:A:479:VAL:HG12	3:C:11:THR:HG21	1.88	0.54
1:A:275:VAL:CA	1:A:278:THR:HG22	2.34	0.54
1:A:404:ASP:OD1	1:A:407:ARG:NH2	2.40	0.53
1:A:644:GLU:OE2	1:A:644:GLU:HA	2.08	0.53
1:A:563:ALA:H	1:A:587:ASN:HD22	1.57	0.52
1:A:677:ILE:N	7:A:732:HOH:O	2.43	0.52
1:A:696:ILE:O	1:A:700:ILE:HG13	2.10	0.51
1:A:239:PHE:O	2:B:5:GLN:HA	2.11	0.51
1:A:287:VAL:HG11	1:A:297:PRO:HA	1.93	0.51
1:A:330:VAL:HB	1:A:355:VAL:HG22	1.93	0.51
1:A:427:PHE:CD1	1:A:433:MET:HB3	2.45	0.51
1:A:305:GLU:HG2	1:A:536:THR:HG23	1.93	0.50
1:A:274:CYS:O	1:A:275:VAL:CB	2.59	0.50
1:A:270:PHE:CE1	1:A:282:ILE:HD13	2.47	0.50
1:A:424:SER:HB3	3:C:10:SER:O	2.11	0.50
1:A:648:ASN:ND2	1:A:648:ASN:N	2.58	0.50
1:A:619:LEU:C	1:A:619:LEU:HD23	2.33	0.49
1:A:237:ASN:N	1:A:254:LEU:HD11	2.27	0.49
3:C:4:LYS:CB	7:C:240:HOH:O	2.58	0.49
1:A:482:PHE:HB2	3:C:9:MLY:HH22	1.94	0.49
1:A:306:VAL:O	1:A:311:TRP:CE3	2.65	0.49
1:A:605:ILE:HD12	1:A:605:ILE:C	2.33	0.49

Continued on next page...

Continued from previous page...

Atom-1	Atom-2	Interatomic distance (Å)	Clash overlap (Å)
1:A:511:GLU:O	1:A:572:PRO:HD2	2.13	0.49
1:A:484:LEU:HD12	1:A:484:LEU:N	2.29	0.48
1:A:553:ILE:N	1:A:553:ILE:HD12	2.28	0.48
1:A:569:VAL:CG1	6:A:4:OGA:H4C2	2.43	0.48
1:A:271:CYS:SG	1:A:273:LYS:HB2	2.52	0.48
1:A:282:ILE:N	1:A:282:ILE:HD12	2.31	0.46
1:A:307:GLY:HA3	1:A:396:GLN:CG	2.45	0.46
1:A:625:ARG:HD2	1:A:626:ASN:OD1	2.15	0.46
1:A:435:GLU:HA	1:A:438:LYS:HE2	1.96	0.46
1:A:604:GLU:HB3	1:A:605:ILE:H	1.58	0.46
1:A:648:ASN:ND2	1:A:648:ASN:H	2.07	0.46
1:A:643:ARG:HD2	1:A:701:GLN:NE2	2.30	0.46
1:A:515:TYR:O	1:A:567:HIS:HA	2.16	0.46
1:A:588:LEU:HD12	7:A:133:HOH:O	2.15	0.45
1:A:694:ILE:O	1:A:698:THR:CG2	2.65	0.45
1:A:253:PHE:CD2	1:A:263:TYR:CE1	3.03	0.45
1:A:701:GLN:C	1:A:703:ALA:N	2.70	0.45
1:A:287:VAL:HG13	1:A:300:LYS:HE3	1.99	0.45
1:A:569:VAL:HG13	6:A:4:OGA:H4C2	1.99	0.45
1:A:458:GLY:O	1:A:462:ILE:HG12	2.16	0.44
1:A:239:PHE:HE1	7:A:128:HOH:O	1.99	0.44
1:A:287:VAL:HG13	1:A:300:LYS:CE	2.47	0.44
1:A:274:CYS:O	1:A:276:PRO:HD3	2.17	0.44
1:A:377:ASP:O	1:A:381:ILE:HG13	2.18	0.44
1:A:359:LYS:HE3	7:A:786:HOH:O	2.18	0.43
1:A:468:GLU:C	7:A:763:HOH:O	2.56	0.43
1:A:238:ASP:CG	1:A:239:PHE:H	2.22	0.43
1:A:266:TYR:HA	1:A:283:ARG:HA	2.00	0.43
1:A:237:ASN:O	1:A:238:ASP:HB3	2.19	0.43
1:A:206:HIS:CE1	1:A:207:GLU:HG2	2.54	0.43
1:A:325:PRO:CB	1:A:330:VAL:HG13	2.49	0.43
1:A:498:PHE:HD1	1:A:498:PHE:O	2.01	0.43
1:A:581:ASN:OD1	3:C:9:MLY:HH12	2.19	0.42
1:A:596:HIS:HE1	1:A:659:GLU:OE1	2.02	0.42
1:A:613:PHE:HA	1:A:614:PRO:HD3	1.83	0.42
1:A:657:LYS:NZ	1:A:661:GLU:OE1	2.52	0.42
1:A:275:VAL:O	1:A:275:VAL:HG13	2.16	0.42
1:A:403:LEU:HD12	1:A:403:LEU:HA	1.80	0.42
1:A:701:GLN:C	1:A:703:ALA:H	2.22	0.42
3:C:4:LYS:CA	7:C:240:HOH:O	2.67	0.42
1:A:452:LEU:C	1:A:454:PRO:HD3	2.40	0.42

Continued on next page...

Continued from previous page...

Atom-1	Atom-2	Interatomic distance (Å)	Clash overlap (Å)
1:A:426:GLU:HG3	1:A:478:LYS:O	2.20	0.41
1:A:241:TRP:CG	2:B:4:M3L:HE3	2.56	0.41
1:A:240:GLN:HB2	1:A:253:PHE:HD1	1.86	0.41
1:A:270:PHE:HB3	1:A:278:THR:HG21	2.02	0.41
1:A:319:GLU:OE1	1:A:550:ARG:HD2	2.21	0.41
1:A:382:MET:SD	1:A:433:MET:HG3	2.61	0.41
1:A:624:MET:O	1:A:629:LEU:HB2	2.21	0.41
1:A:513:ILE:HD12	1:A:570:LEU:HD23	2.03	0.41
1:A:341:ARG:HD2	7:A:125:HOH:O	2.20	0.40
1:A:533:SER:HA	1:A:534:PRO:HD3	1.87	0.40
1:A:296:SER:HA	1:A:297:PRO:HD3	1.90	0.40
1:A:237:ASN:HB2	1:A:254:LEU:HD12	2.04	0.40
1:A:359:LYS:HA	1:A:557:GLN:HG2	2.04	0.40

All (2) symmetry-related close contacts are listed below. The label for Atom-2 includes the symmetry operator and encoded unit-cell translations to be applied.

Atom-1	Atom-2	Interatomic distance (Å)	Clash overlap (Å)
7:A:67:HOH:O	7:A:757:HOH:O 3_645	2.11	0.09
7:A:112:HOH:O	7:A:121:HOH:O 3_545	2.18	0.02

5.3 Torsion angles [i](#)

5.3.1 Protein backbone [i](#)

In the following table, the Percentiles column shows the percent Ramachandran outliers of the chain as a percentile score with respect to all X-ray entries followed by that with respect to entries of similar resolution.

The Analysed column shows the number of residues for which the backbone conformation was analysed, and the total number of residues.

Mol	Chain	Analysed	Favoured	Allowed	Outliers	Percentiles	
1	A	477/528 (90%)	454 (95%)	21 (4%)	2 (0%)	34	42
2	B	3/15 (20%)	3 (100%)	0	0	100	100
3	C	5/17 (29%)	4 (80%)	1 (20%)	0	100	100
All	All	485/560 (87%)	461 (95%)	22 (4%)	2 (0%)	34	42

All (2) Ramachandran outliers are listed below:

Mol	Chain	Res	Type
1	A	275	VAL
1	A	702	ASN

5.3.2 Protein sidechains ⓘ

In the following table, the Percentiles column shows the percent sidechain outliers of the chain as a percentile score with respect to all X-ray entries followed by that with respect to entries of similar resolution.

The Analysed column shows the number of residues for which the sidechain conformation was analysed, and the total number of residues.

Mol	Chain	Analysed	Rotameric	Outliers	Percentiles	
1	A	433/475 (91%)	413 (95%)	20 (5%)	27	38
2	B	4/9 (44%)	3 (75%)	1 (25%)	0	0
3	C	6/11 (54%)	5 (83%)	1 (17%)	2	2
All	All	443/495 (90%)	421 (95%)	22 (5%)	24	34

All (22) residues with a non-rotameric sidechain are listed below:

Mol	Chain	Res	Type
1	A	271	CYS
1	A	313	GLU
1	A	344	GLU
1	A	351	ASN
1	A	413	THR
1	A	418	LEU
1	A	464	LEU
1	A	497	ASP
1	A	498	PHE
1	A	551	VAL
1	A	569	VAL
1	A	585	LEU
1	A	604	GLU
1	A	628	LEU
1	A	629	LEU
1	A	648	ASN
1	A	651	THR
1	A	664	MET
1	A	681	ASP
1	A	698	THR
2	B	2	ARG

Continued on next page...

Continued from previous page...

Mol	Chain	Res	Type
3	C	6	THR

Some sidechains can be flipped to improve hydrogen bonding and reduce clashes. All (9) such sidechains are listed below:

Mol	Chain	Res	Type
1	A	237	ASN
1	A	277	HIS
1	A	395	ASN
1	A	430	ASN
1	A	522	GLN
1	A	587	ASN
1	A	596	HIS
1	A	648	ASN
3	C	5	GLN

5.3.3 RNA ⓘ

There are no RNA molecules in this entry.

5.4 Non-standard residues in protein, DNA, RNA chains ⓘ

2 non-standard protein/DNA/RNA residues are modelled in this entry.

In the following table, the Counts columns list the number of bonds (or angles) for which Mogul statistics could be retrieved, the number of bonds (or angles) that are observed in the model and the number of bonds (or angles) that are defined in the Chemical Component Dictionary. The Link column lists molecule types, if any, to which the group is linked. The Z score for a bond length (or angle) is the number of standard deviations the observed value is removed from the expected value. A bond length (or angle) with $|Z| > 2$ is considered an outlier worth inspection. RMSZ is the root-mean-square of all Z scores of the bond lengths (or angles).

Mol	Type	Chain	Res	Link	Bond lengths			Bond angles		
					Counts	RMSZ	# Z > 2	Counts	RMSZ	# Z > 2
3	MLY	C	9	3	9,10,11	2.49	4 (44%)	6,11,13	0.45	0
2	M3L	B	4	2	10,11,12	1.18	1 (10%)	9,14,16	0.60	0

In the following table, the Chirals column lists the number of chiral outliers, the number of chiral centers analysed, the number of these observed in the model and the number defined in the Chemical Component Dictionary. Similar counts are reported in the Torsion and Rings columns. '-' means no outliers of that kind were identified.

Mol	Type	Chain	Res	Link	Chirals	Torsions	Rings
3	MLY	C	9	3	-	4/8/9/11	-
2	M3L	B	4	2	-	1/9/10/12	-

All (5) bond length outliers are listed below:

Mol	Chain	Res	Type	Atoms	Z	Observed(Å)	Ideal(Å)
3	C	9	MLY	CB-CA	5.62	1.61	1.53
3	C	9	MLY	CE-NZ	2.40	1.55	1.46
2	B	4	M3L	CM3-NZ	-2.18	1.43	1.50
3	C	9	MLY	CG-CB	2.14	1.61	1.52
3	C	9	MLY	CD-CE	2.09	1.60	1.51

There are no bond angle outliers.

There are no chirality outliers.

All (5) torsion outliers are listed below:

Mol	Chain	Res	Type	Atoms
2	B	4	M3L	C-CA-CB-CG
3	C	9	MLY	CD-CE-NZ-CH1
3	C	9	MLY	CD-CE-NZ-CH2
3	C	9	MLY	CE-CD-CG-CB
3	C	9	MLY	CG-CD-CE-NZ

There are no ring outliers.

2 monomers are involved in 5 short contacts:

Mol	Chain	Res	Type	Clashes	Symm-Clashes
3	C	9	MLY	3	0
2	B	4	M3L	2	0

5.5 Carbohydrates [i](#)

There are no carbohydrates in this entry.

5.6 Ligand geometry [i](#)

Of 4 ligands modelled in this entry, 3 are monoatomic - leaving 1 for Mogul analysis.

In the following table, the Counts columns list the number of bonds (or angles) for which Mogul statistics could be retrieved, the number of bonds (or angles) that are observed in the model and

the number of bonds (or angles) that are defined in the Chemical Component Dictionary. The Link column lists molecule types, if any, to which the group is linked. The Z score for a bond length (or angle) is the number of standard deviations the observed value is removed from the expected value. A bond length (or angle) with $|Z| > 2$ is considered an outlier worth inspection. RMSZ is the root-mean-square of all Z scores of the bond lengths (or angles).

Mol	Type	Chain	Res	Link	Bond lengths			Bond angles		
					Counts	RMSZ	$\# Z > 2$	Counts	RMSZ	$\# Z > 2$
6	OGA	A	4	4	3,9,9	3.49	2 (66%)	4,11,11	1.79	1 (25%)

In the following table, the Chirals column lists the number of chiral outliers, the number of chiral centers analysed, the number of these observed in the model and the number defined in the Chemical Component Dictionary. Similar counts are reported in the Torsion and Rings columns. '-' means no outliers of that kind were identified.

Mol	Type	Chain	Res	Link	Chirals	Torsions	Rings
6	OGA	A	4	4	-	1/3/9/9	-

All (2) bond length outliers are listed below:

Mol	Chain	Res	Type	Atoms	Z	Observed(Å)	Ideal(Å)
6	A	4	OGA	C2-N1	5.66	1.46	1.33
6	A	4	OGA	O2'-C2	-2.13	1.19	1.23

All (1) bond angle outliers are listed below:

Mol	Chain	Res	Type	Atoms	Z	Observed(°)	Ideal(°)
6	A	4	OGA	C5-C4-N1	2.85	115.93	110.43

There are no chirality outliers.

All (1) torsion outliers are listed below:

Mol	Chain	Res	Type	Atoms
6	A	4	OGA	C5-C4-N1-C2

There are no ring outliers.

1 monomer is involved in 2 short contacts:

Mol	Chain	Res	Type	Clashes	Symm-Clashes
6	A	4	OGA	2	0

5.7 Other polymers [i](#)

There are no such residues in this entry.

5.8 Polymer linkage issues [i](#)

There are no chain breaks in this entry.

6 Fit of model and data [i](#)

6.1 Protein, DNA and RNA chains [i](#)

In the following table, the column labelled ‘#RSRZ> 2’ contains the number (and percentage) of RSRZ outliers, followed by percent RSRZ outliers for the chain as percentile scores relative to all X-ray entries and entries of similar resolution. The OWAB column contains the minimum, median, 95th percentile and maximum values of the occupancy-weighted average B-factor per residue. The column labelled ‘Q< 0.9’ lists the number of (and percentage) of residues with an average occupancy less than 0.9.

Mol	Chain	Analysed	<RSRZ>	#RSRZ>2	OWAB(Å ²)	Q<0.9
1	A	483/528 (91%)	0.04	8 (1%) 70 76	22, 41, 69, 102	0
2	B	5/15 (33%)	0.29	0 100 100	59, 64, 82, 85	0
3	C	7/17 (41%)	1.21	1 (14%) 2 3	39, 46, 59, 67	0
All	All	495/560 (88%)	0.06	9 (1%) 68 74	22, 41, 71, 102	0

All (9) RSRZ outliers are listed below:

Mol	Chain	Res	Type	RSRZ
3	C	5	GLN	4.0
1	A	239	PHE	4.0
1	A	606	ARG	3.6
1	A	275	VAL	3.5
1	A	668	LEU	2.3
1	A	236	LYS	2.3
1	A	253	PHE	2.3
1	A	673	GLU	2.3
1	A	208	ASP	2.2

6.2 Non-standard residues in protein, DNA, RNA chains [i](#)

In the following table, the Atoms column lists the number of modelled atoms in the group and the number defined in the chemical component dictionary. The B-factors column lists the minimum, median, 95th percentile and maximum values of B factors of atoms in the group. The column labelled ‘Q< 0.9’ lists the number of atoms with occupancy less than 0.9.

Mol	Type	Chain	Res	Atoms	RSCC	RSR	B-factors(Å ²)	Q<0.9
2	M3L	B	4	12/13	0.90	0.18	65,69,71,71	0
3	MLY	C	9	11/12	0.91	0.15	33,38,42,46	0

6.3 Carbohydrates [i](#)

There are no carbohydrates in this entry.

6.4 Ligands [i](#)

In the following table, the Atoms column lists the number of modelled atoms in the group and the number defined in the chemical component dictionary. The B-factors column lists the minimum, median, 95th percentile and maximum values of B factors of atoms in the group. The column labelled 'Q< 0.9' lists the number of atoms with occupancy less than 0.9.

Mol	Type	Chain	Res	Atoms	RSCC	RSR	B-factors(\AA^2)	Q<0.9
5	ZN	A	3	1/1	0.94	0.05	80,80,80,80	0
6	OGA	A	4	10/10	0.95	0.14	31,40,45,48	0
5	ZN	A	2	1/1	0.95	0.04	75,75,75,75	0
4	FE2	A	1	1/1	1.00	0.16	27,27,27,27	0

6.5 Other polymers [i](#)

There are no such residues in this entry.