



# wwPDB X-ray Structure Validation Summary Report ⓘ

Jun 15, 2020 – 11:21 pm BST

PDB ID : 4NCA  
Title : Structure of Thermus thermophilus Argonaute bound to guide DNA 19-mer  
and target DNA in the presence of MN2+  
Authors : Sheng, G.; Zhao, H.; Wang, J.; Rao, Y.; Wang, Y.  
Deposited on : 2013-10-24  
Resolution : 2.49 Å(reported)

This is a wwPDB X-ray Structure Validation Summary Report for a publicly released PDB entry.

We welcome your comments at [validation@mail.wwpdb.org](mailto:validation@mail.wwpdb.org)

A user guide is available at

<https://www.wwpdb.org/validation/2017/XrayValidationReportHelp>

with specific help available everywhere you see the ⓘ symbol.

---

The following versions of software and data (see [references ⓘ](#)) were used in the production of this report:

MolProbity	:	4.02b-467
Xtriage (Phenix)	:	1.13
EDS	:	2.11
Percentile statistics	:	20191225.v01 (using entries in the PDB archive December 25th 2019)
Refmac	:	5.8.0158
CCP4	:	7.0.044 (Gargrove)
Ideal geometry (proteins)	:	Engh & Huber (2001)
Ideal geometry (DNA, RNA)	:	Parkinson et al. (1996)
Validation Pipeline (wwPDB-VP)	:	2.11

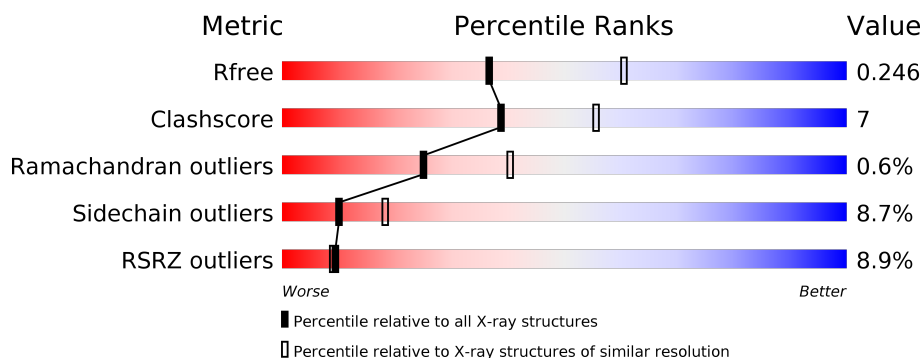
# 1 Overall quality at a glance

The following experimental techniques were used to determine the structure:

*X-RAY DIFFRACTION*

The reported resolution of this entry is 2.49 Å.

Percentile scores (ranging between 0-100) for global validation metrics of the entry are shown in the following graphic. The table shows the number of entries on which the scores are based.





Metric	Whole archive (#Entries)	Similar resolution (#Entries, resolution range(Å))
$R_{free}$	130704	5857 (2.50-2.46)
Clashscore	141614	6594 (2.50-2.46)
Ramachandran outliers	138981	6469 (2.50-2.46)
Sidechain outliers	138945	6471 (2.50-2.46)
RSRZ outliers	127900	5738 (2.50-2.46)

The table below summarises the geometric issues observed across the polymeric chains and their fit to the electron density. The red, orange, yellow and green segments on the lower bar indicate the fraction of residues that contain outliers for  $\geq 3$ , 2, 1 and 0 types of geometric quality criteria respectively. A grey segment represents the fraction of residues that are not modelled. The numeric value for each fraction is indicated below the corresponding segment, with a dot representing fractions  $\leq 5\%$ . The upper red bar (where present) indicates the fraction of residues that have poor fit to the electron density. The numeric value is given above the bar.

Mol	Chain	Length	Quality of chain
1	A	685	<div> <div>9%</div> <div>75%</div> <div>22%</div> <div>.</div> </div>
1	B	685	<div> <div>9%</div> <div>79%</div> <div>19%</div> <div>..</div> </div>
2	C	21	<div> <div>48%</div> <div>24%</div> <div>5%</div> <div>24%</div> </div>
2	E	21	<div> <div>24%</div> <div>52%</div> <div>24%</div> </div>
3	D	10	<div> <div>80%</div> <div>10%</div> <div>10%</div> </div>
3	F	10	<div> <div>90%</div> <div>10%</div> </div>

*Continued on next page...*

*Continued from previous page...*

Mol	Chain	Length	Quality of chain
4	G	6	 67% 33%
4	H	6	 33% 67%

## 2 Entry composition

There are 7 unique types of molecules in this entry. The entry contains 12306 atoms, of which 0 are hydrogens and 0 are deuteriums.

In the tables below, the ZeroOcc column contains the number of atoms modelled with zero occupancy, the AltConf column contains the number of residues with at least one atom in alternate conformation and the Trace column contains the number of residues modelled with at most 2 atoms.

- Molecule 1 is a protein called Argonaute.

Mol	Chain	Residues	Atoms					ZeroOcc	AltConf	Trace
1	A	683	Total	C	N	O	S	0	0	0
			5338	3409	1001	921	7			
1	B	678	Total	C	N	O	S	0	0	0
			5289	3383	995	904	7			

- Molecule 2 is a DNA chain called 5'-D(P\*TP\*GP\*AP\*GP\*GP\*TP\*AP\*GP\*TP\*AP\*GP\*GP\*TP\*TP\*GP\*TP\*AP\*TP\*AP\*GP\*T)-3'.

Mol	Chain	Residues	Atoms					ZeroOcc	AltConf	Trace
2	C	16	Total	C	N	O	P	0	0	0
			338	160	62	100	16			
2	E	16	Total	C	N	O	P	0	0	0
			338	160	62	100	16			

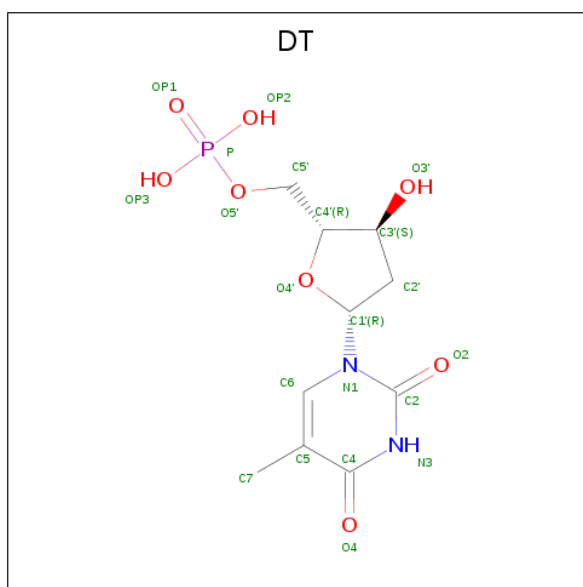
- Molecule 3 is a DNA chain called 5'-D(P\*TP\*AP\*CP\*TP\*AP\*CP\*CP\*TP\*CP\*G)-3'.

Mol	Chain	Residues	Atoms					ZeroOcc	AltConf	Trace
3	D	10	Total	C	N	O	P	0	0	0
			200	95	33	62	10			
3	F	10	Total	C	N	O	P	0	0	0
			201	96	33	62	10			

- Molecule 4 is a DNA chain called 5'-D(\*AP\*CP\*AP\*AP\*CP\*C)-3'.

Mol	Chain	Residues	Atoms					ZeroOcc	AltConf	Trace
4	G	6	Total	C	N	O	P	0	0	0
			117	57	24	31	5			
4	H	6	Total	C	N	O	P	0	0	0
			117	57	24	31	5			

- Molecule 5 is THYMIDINE-5'-MONOPHOSPHATE (three-letter code: DT) (formula: C<sub>10</sub>H<sub>15</sub>N<sub>2</sub>O<sub>8</sub>P).



Mol	Chain	Residues	Atoms					ZeroOcc	AltConf
5	A	1	Total	C	N	O	P	0	0
			21	10	2	8	1		
5	B	1	Total	C	N	O	P	0	0
			21	10	2	8	1		

- Molecule 6 is MAGNESIUM ION (three-letter code: MG) (formula: Mg).

Mol	Chain	Residues	Atoms		ZeroOcc	AltConf
6	B	2	Total	Mg	0	0
			2	2		
6	A	1	Total	Mg	0	0
			1	1		
6	D	1	Total	Mg	0	0
			1	1		
6	C	1	Total	Mg	0	0
			1	1		
6	E	1	Total	Mg	0	0
			1	1		

- Molecule 7 is water.

Mol	Chain	Residues	Atoms		ZeroOcc	AltConf
7	A	152	Total	O	0	0
			152	152		
7	B	118	Total	O	0	0
			118	118		

*Continued on next page...*

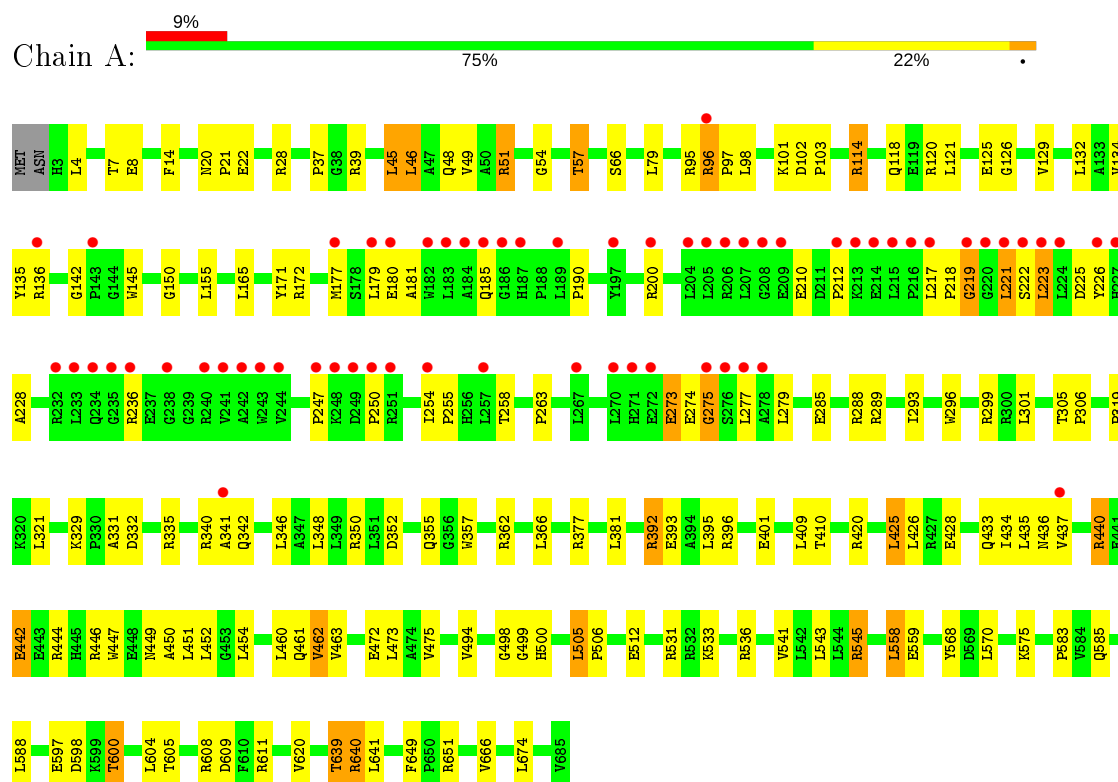
*Continued from previous page...*

Mol	Chain	Residues	Atoms		ZeroOcc	AltConf
7	C	11	Total 11	O 11	0	0
7	D	11	Total 11	O 11	0	0
7	E	18	Total 18	O 18	0	0
7	F	6	Total 6	O 6	0	0
7	G	1	Total 1	O 1	0	0
7	H	3	Total 3	O 3	0	0

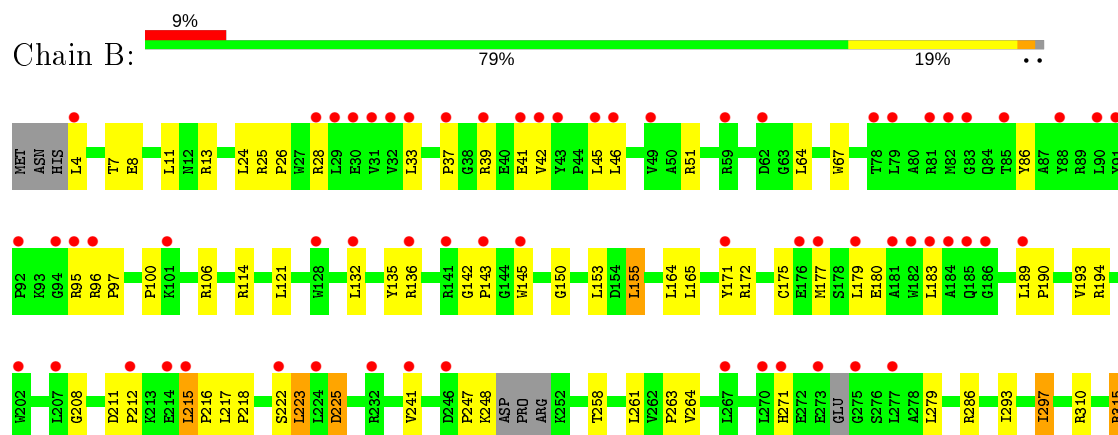
### 3 Residue-property plots

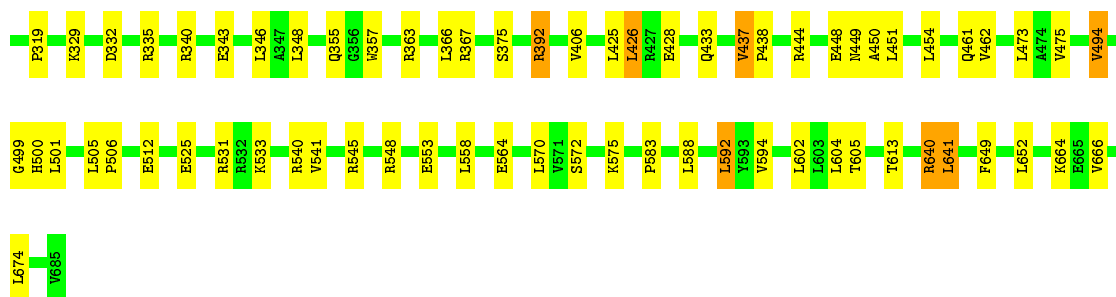
These plots are drawn for all protein, RNA and DNA chains in the entry. The first graphic for a chain summarises the proportions of the various outlier classes displayed in the second graphic. The second graphic shows the sequence view annotated by issues in geometry and electron density. Residues are color-coded according to the number of geometric quality criteria for which they contain at least one outlier: green = 0, yellow = 1, orange = 2 and red = 3 or more. A red dot above a residue indicates a poor fit to the electron density ( $RSRZ > 2$ ). Stretches of 2 or more consecutive residues without any outlier are shown as a green connector. Residues present in the sample, but not in the model, are shown in grey.

#### • Molecule 1: Argonaute



#### • Molecule 1: Argonaute





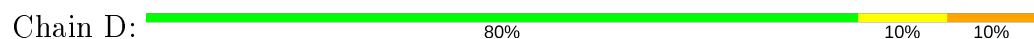
- Molecule 2: 5'-D(P\*TP\*GP\*AP\*GP\*GP\*TP\*AP\*GP\*TP\*AP\*GP\*GP\*TP\*TP\*GP\*TP\*AP\*TP\*AP\*GP\*T)-3'



- Molecule 2: 5'-D(P\*TP\*GP\*AP\*GP\*GP\*TP\*AP\*GP\*TP\*AP\*GP\*GP\*TP\*TP\*GP\*TP\*AP\*TP\*AP\*GP\*T)-3'



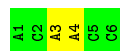
- Molecule 3: 5'-D(P\*TP\*AP\*CP\*TP\*AP\*CP\*CP\*TP\*CP\*G)-3'



- Molecule 3: 5'-D(P\*TP\*AP\*CP\*TP\*AP\*CP\*CP\*TP\*CP\*G)-3'



- Molecule 4: 5'-D(\*AP\*CP\*AP\*AP\*CP\*C)-3'



- Molecule 4: 5'-D(\*AP\*CP\*AP\*AP\*CP\*C)-3'





A4	C5	A6	A7	C8	C9
----	----	----	----	----	----

## 4 Data and refinement statistics

Property	Value	Source
Space group	P 21 21 21	Depositor
Cell constants a, b, c, $\alpha$ , $\beta$ , $\gamma$	110.95Å 117.56Å 160.38Å 90.00° 90.00° 90.00°	Depositor
Resolution (Å)	48.16 – 2.49 49.41 – 2.49	Depositor EDS
% Data completeness (in resolution range)	99.4 (48.16-2.49) 99.4 (49.41-2.49)	Depositor EDS
$R_{merge}$	0.13	Depositor
$R_{sym}$	(Not available)	Depositor
$\langle I/\sigma(I) \rangle$ <sup>1</sup>	1.33 (at 2.48Å)	Xtriage
Refinement program	PHENIX 1.8.2_1309	Depositor
R, $R_{free}$	0.200 , 0.245 0.202 , 0.246	Depositor DCC
$R_{free}$ test set	3714 reflections (5.04%)	wwPDB-VP
Wilson B-factor (Å <sup>2</sup> )	46.7	Xtriage
Anisotropy	0.322	Xtriage
Bulk solvent $k_{sol}$ (e/Å <sup>3</sup> ), $B_{sol}$ (Å <sup>2</sup> )	0.36 , 61.3	EDS
L-test for twinning <sup>2</sup>	$\langle  L  \rangle = 0.49$ , $\langle L^2 \rangle = 0.32$	Xtriage
Estimated twinning fraction	No twinning to report.	Xtriage
$F_o, F_c$ correlation	0.94	EDS
Total number of atoms	12306	wwPDB-VP
Average B, all atoms (Å <sup>2</sup> )	62.0	wwPDB-VP

Xtriage's analysis on translational NCS is as follows: *The largest off-origin peak in the Patterson function is 2.76% of the height of the origin peak. No significant pseudotranslation is detected.*

<sup>1</sup>Intensities estimated from amplitudes.

<sup>2</sup>Theoretical values of  $\langle |L| \rangle$ ,  $\langle L^2 \rangle$  for acentric reflections are 0.5, 0.333 respectively for untwinned datasets, and 0.375, 0.2 for perfectly twinned datasets.

## 5 Model quality [i](#)

### 5.1 Standard geometry [i](#)

Bond lengths and bond angles in the following residue types are not validated in this section: MG

The Z score for a bond length (or angle) is the number of standard deviations the observed value is removed from the expected value. A bond length (or angle) with  $|Z| > 5$  is considered an outlier worth inspection. RMSZ is the root-mean-square of all Z scores of the bond lengths (or angles).

Mol	Chain	Bond lengths		Bond angles	
		RMSZ	# Z  >5	RMSZ	# Z  >5
1	A	0.26	0/5466	0.47	2/7423 (0.0%)
1	B	0.26	0/5416	0.45	0/7353
2	C	0.73	1/379 (0.3%)	1.28	2/584 (0.3%)
2	E	0.75	1/379 (0.3%)	1.26	4/584 (0.7%)
3	D	0.83	1/222 (0.5%)	1.12	1/337 (0.3%)
3	F	0.82	1/223 (0.4%)	1.11	0/339
4	G	0.50	0/131	1.14	0/199
4	H	0.47	0/131	0.99	0/199
All	All	0.35	4/12347 (0.0%)	0.61	9/17018 (0.1%)

All (4) bond length outliers are listed below:

Mol	Chain	Res	Type	Atoms	Z	Observed(Å)	Ideal(Å)
2	C	1	DT	OP3-P	-10.57	1.48	1.61
2	E	1	DT	OP3-P	-10.56	1.48	1.61
3	F	10	DT	OP3-P	-10.31	1.48	1.61
3	D	10	DT	OP3-P	-10.17	1.49	1.61

The worst 5 of 9 bond angle outliers are listed below:

Mol	Chain	Res	Type	Atoms	Z	Observed(°)	Ideal(°)
2	E	1	DT	OP1-P-OP2	-8.62	106.67	119.60
2	C	1	DT	OP1-P-OP2	-7.58	108.22	119.60
1	A	247	PRO	N-CA-CB	6.04	110.55	103.30
2	E	11	DG	O4'-C1'-N9	5.66	111.96	108.00
1	A	250	PRO	N-CA-CB	5.60	110.02	103.30

There are no chirality outliers.

There are no planarity outliers.

## 5.2 Too-close contacts

In the following table, the Non-H and H(model) columns list the number of non-hydrogen atoms and hydrogen atoms in the chain respectively. The H(added) column lists the number of hydrogen atoms added and optimized by MolProbity. The Clashes column lists the number of clashes within the asymmetric unit, whereas Symm-Clashes lists symmetry related clashes.

Mol	Chain	Non-H	H(model)	H(added)	Clashes	Symm-Clashes
1	A	5338	0	5395	95	0
1	B	5289	0	5362	73	0
2	C	338	0	183	5	0
2	E	338	0	183	5	0
3	D	200	0	111	1	0
3	F	201	0	114	1	0
4	G	117	0	67	2	0
4	H	117	0	67	4	0
5	A	21	0	13	4	0
5	B	21	0	13	3	0
6	A	1	0	0	0	0
6	B	2	0	0	0	0
6	C	1	0	0	0	0
6	D	1	0	0	1	0
6	E	1	0	0	0	0
7	A	152	0	0	2	0
7	B	118	0	0	2	0
7	C	11	0	0	0	0
7	D	11	0	0	0	0
7	E	18	0	0	0	0
7	F	6	0	0	0	0
7	G	1	0	0	0	0
7	H	3	0	0	0	0
All	All	12306	0	11508	174	0

The all-atom clashscore is defined as the number of clashes found per 1000 atoms (including hydrogen atoms). The all-atom clashscore for this structure is 7.

The worst 5 of 174 close contacts within the same asymmetric unit are listed below, sorted by their clash magnitude.

Atom-1	Atom-2	Interatomic distance (Å)	Clash overlap (Å)
2:C:14:DT:H3	4:G:3:DA:H2	1.31	0.78
1:B:494:VAL:HG22	1:B:500:HIS:HB2	1.71	0.72
1:A:129:VAL:HG22	1:A:134:VAL:HG12	1.75	0.69
1:A:136:ARG:NH1	7:A:925:HOH:O	2.26	0.69

*Continued on next page...*

*Continued from previous page...*

Atom-1	Atom-2	Interatomic distance (Å)	Clash overlap (Å)
1:A:436:ASN:O	1:A:446:ARG:NH2	2.25	0.69

There are no symmetry-related clashes.

## 5.3 Torsion angles [i](#)

### 5.3.1 Protein backbone [i](#)

In the following table, the Percentiles column shows the percent Ramachandran outliers of the chain as a percentile score with respect to all X-ray entries followed by that with respect to entries of similar resolution.

The Analysed column shows the number of residues for which the backbone conformation was analysed, and the total number of residues.

Mol	Chain	Analysed	Favoured	Allowed	Outliers	Percentiles	
1	A	681/685 (99%)	643 (94%)	32 (5%)	6 (1%)	17	29
1	B	672/685 (98%)	654 (97%)	16 (2%)	2 (0%)	41	59
All	All	1353/1370 (99%)	1297 (96%)	48 (4%)	8 (1%)	25	40

5 of 8 Ramachandran outliers are listed below:

Mol	Chain	Res	Type
1	B	247	PRO
1	A	274	GLU
1	A	275	GLY
1	A	585	GLN
1	B	143	PRO

### 5.3.2 Protein sidechains [i](#)

In the following table, the Percentiles column shows the percent sidechain outliers of the chain as a percentile score with respect to all X-ray entries followed by that with respect to entries of similar resolution.

The Analysed column shows the number of residues for which the sidechain conformation was analysed, and the total number of residues.

Mol	Chain	Analysed	Rotameric	Outliers	Percentiles	
1	A	529/549 (96%)	480 (91%)	49 (9%)	9	15

*Continued on next page...*

*Continued from previous page...*

Mol	Chain	Analysed	Rotameric	Outliers	Percentiles	
1	B	522/549 (95%)	480 (92%)	42 (8%)	12	21
All	All	1051/1098 (96%)	960 (91%)	91 (9%)	10	18

5 of 91 residues with a non-rotameric sidechain are listed below:

Mol	Chain	Res	Type
1	A	570	LEU
1	B	24	LEU
1	B	558	LEU
1	A	598	ASP
1	A	639	THR

Some sidechains can be flipped to improve hydrogen bonding and reduce clashes. All (2) such sidechains are listed below:

Mol	Chain	Res	Type
1	A	461	GLN
1	B	312	GLN

### 5.3.3 RNA [i](#)

There are no RNA molecules in this entry.

## 5.4 Non-standard residues in protein, DNA, RNA chains [i](#)

There are no non-standard protein/DNA/RNA residues in this entry.

## 5.5 Carbohydrates [i](#)

There are no carbohydrates in this entry.

## 5.6 Ligand geometry [i](#)

Of 8 ligands modelled in this entry, 6 are monoatomic - leaving 2 for Mogul analysis.

There are no bond length outliers.

There are no bond angle outliers.

There are no chirality outliers.

There are no torsion outliers.

There are no ring outliers.

No monomer is involved in short contacts.

## 5.7 Other polymers ⓘ

There are no such residues in this entry.

## 5.8 Polymer linkage issues ⓘ

There are no chain breaks in this entry.

## 6 Fit of model and data ⓘ

### 6.1 Protein, DNA and RNA chains ⓘ

In the following table, the column labelled ‘#RSRZ> 2’ contains the number (and percentage) of RSRZ outliers, followed by percent RSRZ outliers for the chain as percentile scores relative to all X-ray entries and entries of similar resolution. The OWAB column contains the minimum, median, 95<sup>th</sup> percentile and maximum values of the occupancy-weighted average B-factor per residue. The column labelled ‘Q< 0.9’ lists the number of (and percentage) of residues with an average occupancy less than 0.9.

Mol	Chain	Analysed	<RSRZ>	#RSRZ>2	OWAB(Å <sup>2</sup> )	Q<0.9
1	A	683/685 (99%)	0.50	63 (9%) 9 8	31, 56, 106, 142	0
1	B	678/685 (98%)	0.49	64 (9%) 8 8	36, 59, 99, 160	0
2	C	16/21 (76%)	-0.29	0 100 100	50, 56, 71, 90	0
2	E	16/21 (76%)	-0.34	0 100 100	46, 57, 73, 95	0
3	D	10/10 (100%)	-0.26	0 100 100	53, 65, 73, 76	0
3	F	10/10 (100%)	-0.36	0 100 100	52, 62, 69, 72	0
4	G	6/6 (100%)	-0.14	0 100 100	53, 67, 85, 99	0
4	H	6/6 (100%)	-0.02	0 100 100	50, 70, 93, 94	0
All	All	1425/1444 (98%)	0.46	127 (8%) 9 9	31, 57, 101, 160	0

The worst 5 of 127 RSRZ outliers are listed below:

Mol	Chain	Res	Type	RSRZ
1	A	277	LEU	7.6
1	A	251	ARG	6.5
1	A	136	ARG	6.3
1	A	207	LEU	6.3
1	A	183	LEU	5.9

### 6.2 Non-standard residues in protein, DNA, RNA chains ⓘ

There are no non-standard protein/DNA/RNA residues in this entry.

### 6.3 Carbohydrates ⓘ

There are no carbohydrates in this entry.



## 6.4 Ligands [i](#)

In the following table, the Atoms column lists the number of modelled atoms in the group and the number defined in the chemical component dictionary. The B-factors column lists the minimum, median, 95<sup>th</sup> percentile and maximum values of B factors of atoms in the group. The column labelled 'Q< 0.9' lists the number of atoms with occupancy less than 0.9.

Mol	Type	Chain	Res	Atoms	RSCC	RSR	B-factors(Å <sup>2</sup> )	Q<0.9
6	MG	D	101	1/1	0.87	0.11	67,67,67,67	0
5	DT	A	701	21/21	0.90	0.28	74,84,92,94	0
6	MG	C	101	1/1	0.95	0.08	50,50,50,50	0
5	DT	B	701	21/21	0.96	0.21	56,67,73,79	0
6	MG	A	702	1/1	0.97	0.14	43,43,43,43	0
6	MG	B	702	1/1	0.97	0.12	44,44,44,44	0
6	MG	B	703	1/1	0.98	0.13	51,51,51,51	0
6	MG	E	101	1/1	0.98	0.10	48,48,48,48	0

## 6.5 Other polymers [i](#)

There are no such residues in this entry.