



# wwPDB X-ray Structure Validation Summary Report ⓘ

May 14, 2020 – 05:37 pm BST

PDB ID : 3NDT  
Title : HIV-1 Protease Saquinavir:Ritonavir 1:1 complex structure  
Authors : Geremia, S.; Olajuyigbe, F.M.; Demitri, N.  
Deposited on : 2010-06-08  
Resolution : 1.72 Å(reported)

This is a wwPDB X-ray Structure Validation Summary Report for a publicly released PDB entry.

We welcome your comments at [validation@mail.wwpdb.org](mailto:validation@mail.wwpdb.org)

A user guide is available at

<https://www.wwpdb.org/validation/2017/XrayValidationReportHelp>

with specific help available everywhere you see the ⓘ symbol.

---

The following versions of software and data (see [references ⓘ](#)) were used in the production of this report:

MolProbity : 4.02b-467  
Mogul : 1.8.5 (274361), CSD as541be (2020)  
Xtriage (Phenix) : 1.13  
EDS : 2.11  
buster-report : 1.1.7 (2018)  
Percentile statistics : 20191225.v01 (using entries in the PDB archive December 25th 2019)  
Refmac : 5.8.0158  
CCP4 : 7.0.044 (Gargrove)  
Ideal geometry (proteins) : Engh & Huber (2001)  
Ideal geometry (DNA, RNA) : Parkinson et al. (1996)  
Validation Pipeline (wwPDB-VP) : 2.11

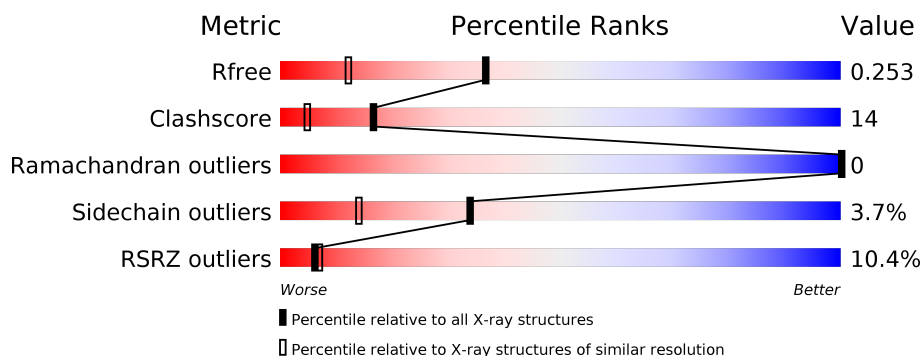
# 1 Overall quality at a glance

The following experimental techniques were used to determine the structure:

## *X-RAY DIFFRACTION*

The reported resolution of this entry is 1.72 Å.

Percentile scores (ranging between 0-100) for global validation metrics of the entry are shown in the following graphic. The table shows the number of entries on which the scores are based.



Metric	Whole archive (#Entries)	Similar resolution (#Entries, resolution range(Å))
$R_{free}$	130704	5722 (1.74-1.70)
Clashscore	141614	6152 (1.74-1.70)
Ramachandran outliers	138981	6051 (1.74-1.70)
Sidechain outliers	138945	6051 (1.74-1.70)
RSRZ outliers	127900	5629 (1.74-1.70)

The table below summarises the geometric issues observed across the polymeric chains and their fit to the electron density. The red, orange, yellow and green segments on the lower bar indicate the fraction of residues that contain outliers for  $\geq 3$ , 2, 1 and 0 types of geometric quality criteria respectively. A grey segment represents the fraction of residues that are not modelled. The numeric value for each fraction is indicated below the corresponding segment, with a dot representing fractions  $\leq 5\%$ . The upper red bar (where present) indicates the fraction of residues that have poor fit to the electron density. The numeric value is given above the bar.

Mol	Chain	Length	Quality of chain
1	A	100	<div> <div>12%</div> <div> <div></div> <div>69%</div> <div>29%</div> <div>.</div> </div> </div>
1	B	100	<div> <div>9%</div> <div> <div></div> <div>83%</div> <div>15%</div> <div>.</div> </div> </div>
1	C	100	<div> <div>9%</div> <div> <div></div> <div>85%</div> <div>11%</div> <div>..</div> </div> </div>
1	D	100	<div> <div>11%</div> <div> <div></div> <div>72%</div> <div>23%</div> <div>..</div> </div> </div>

## 2 Entry composition

There are 6 unique types of molecules in this entry. The entry contains 3497 atoms, of which 0 are hydrogens and 0 are deuteriums.

In the tables below, the ZeroOcc column contains the number of atoms modelled with zero occupancy, the AltConf column contains the number of residues with at least one atom in alternate conformation and the Trace column contains the number of residues modelled with at most 2 atoms.

- Molecule 1 is a protein called Protease.

Mol	Chain	Residues	Atoms					ZeroOcc	AltConf	Trace
1	A	100	Total	C	N	O	S	0	7	0
			799	521	138	138	2			
1	B	100	Total	C	N	O	S	0	6	0
			792	514	138	137	3			
1	C	99	Total	C	N	O	S	0	2	0
			767	500	131	134	2			
1	D	99	Total	C	N	O	S	0	3	0
			774	504	133	135	2			

There are 24 discrepancies between the modelled and reference sequences:

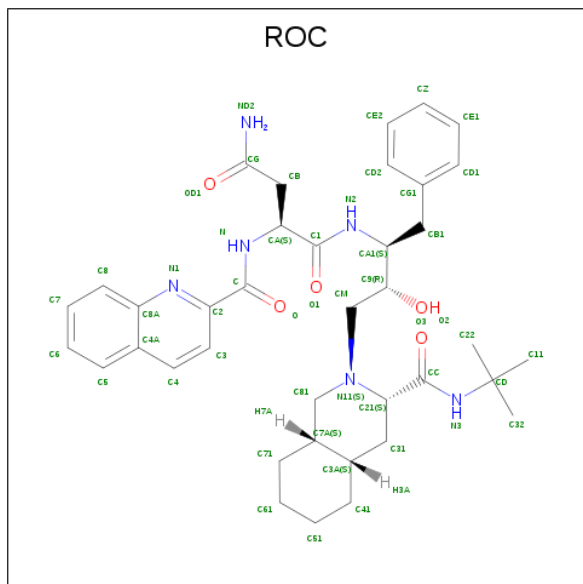
Chain	Residue	Modelled	Actual	Comment	Reference
A	1	ARF	-	INSERTION	UNP P03366
A	8	LYS	GLN	ENGINEERED MUTATION	UNP P03366
A	34	ILE	LEU	ENGINEERED MUTATION	UNP P03366
A	64	ILE	LEU	ENGINEERED MUTATION	UNP P03366
A	68	ALA	CYS	ENGINEERED MUTATION	UNP P03366
A	96	ALA	CYS	ENGINEERED MUTATION	UNP P03366
B	1	ARF	-	INSERTION	UNP P03366
B	8	LYS	GLN	ENGINEERED MUTATION	UNP P03366
B	34	ILE	LEU	ENGINEERED MUTATION	UNP P03366
B	64	ILE	LEU	ENGINEERED MUTATION	UNP P03366
B	68	ALA	CYS	ENGINEERED MUTATION	UNP P03366
B	96	ALA	CYS	ENGINEERED MUTATION	UNP P03366
C	0	ARF	-	INSERTION	UNP P03366
C	7	LYS	GLN	ENGINEERED MUTATION	UNP P03366
C	33	ILE	LEU	ENGINEERED MUTATION	UNP P03366
C	63	ILE	LEU	ENGINEERED MUTATION	UNP P03366
C	67	ALA	CYS	ENGINEERED MUTATION	UNP P03366
C	95	ALA	CYS	ENGINEERED MUTATION	UNP P03366
D	0	ARF	-	INSERTION	UNP P03366
D	7	LYS	GLN	ENGINEERED MUTATION	UNP P03366
D	33	ILE	LEU	ENGINEERED MUTATION	UNP P03366

*Continued on next page...*

Continued from previous page...

Chain	Residue	Modelled	Actual	Comment	Reference
D	63	ILE	LEU	ENGINEERED MUTATION	UNP P03366
D	67	ALA	CYS	ENGINEERED MUTATION	UNP P03366
D	95	ALA	CYS	ENGINEERED MUTATION	UNP P03366

- Molecule 2 is (2S)-N-[(2S,3R)-4-[(2S,3S,4aS,8aS)-3-(tert-butylcarbamoyl)-3,4,4a,5,6,7,8,8a-octahydro-1H-isoquinolin-2-yl]-3-hydroxy-1-phenyl-butan-2-yl]-2-(quinolin-2-ylcarboxylamino)butanediamide (three-letter code: ROC) (formula: C<sub>38</sub>H<sub>50</sub>N<sub>6</sub>O<sub>5</sub>).



Mol	Chain	Residues	Atoms				ZeroOcc	AltConf
2	A	1	Total	C	N	O	0	1
			98	76	12	10		
2	D	1	Total	C	N	O	0	1
			98	76	12	10		

- Molecule 3 is CHLORIDE ION (three-letter code: CL) (formula: Cl).

Mol	Chain	Residues	Atoms		ZeroOcc	AltConf
3	B	5	Total	Cl	0	0
			5	5		
3	A	1	Total	Cl	0	0
			1	1		
3	C	1	Total	Cl	0	0
			1	1		

- Molecule 4 is DIMETHYL SULFOXIDE (three-letter code: DMS) (formula: C<sub>2</sub>H<sub>6</sub>OS).



Mol	Chain	Residues	Atoms				ZeroOcc	AltConf
4	A	1	Total	C	O	S	0	0
			4	2	1	1		
4	A	1	Total	C	O	S	0	0
			4	2	1	1		
4	C	1	Total	C	O	S	0	0
			4	2	1	1		
4	C	1	Total	C	O	S	0	0
			4	2	1	1		

- Molecule 5 is SODIUM ION (three-letter code: NA) (formula: Na).

Mol	Chain	Residues	Atoms		ZeroOcc	AltConf
5	B	1	Total	Na	0	0
			1	1		
5	C	1	Total	Na	0	0
			1	1		

- Molecule 6 is water.

Mol	Chain	Residues	Atoms		ZeroOcc	AltConf
6	A	35	Total	O	0	3
			38	38		
6	B	33	Total	O	0	2
			35	35		
6	C	36	Total	O	0	3
			39	39		

*Continued on next page...*

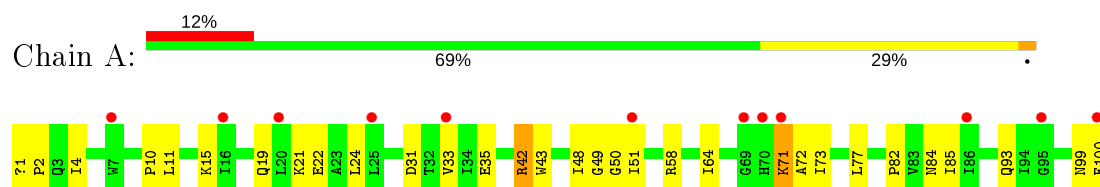
*Continued from previous page...*

Mol	Chain	Residues	Atoms		ZeroOcc	AltConf
6	D	31	Total	O	0	1
			32	32		

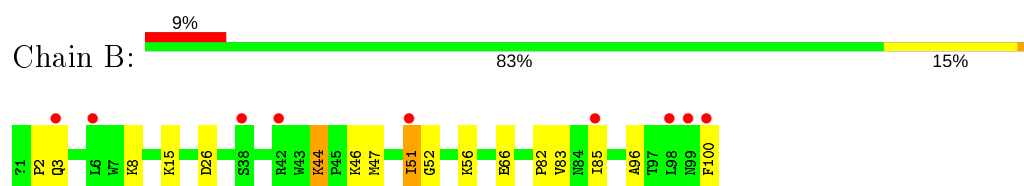
### 3 Residue-property plots [i](#)

These plots are drawn for all protein, RNA and DNA chains in the entry. The first graphic for a chain summarises the proportions of the various outlier classes displayed in the second graphic. The second graphic shows the sequence view annotated by issues in geometry and electron density. Residues are color-coded according to the number of geometric quality criteria for which they contain at least one outlier: green = 0, yellow = 1, orange = 2 and red = 3 or more. A red dot above a residue indicates a poor fit to the electron density ( $RSRZ > 2$ ). Stretches of 2 or more consecutive residues without any outlier are shown as a green connector. Residues present in the sample, but not in the model, are shown in grey.

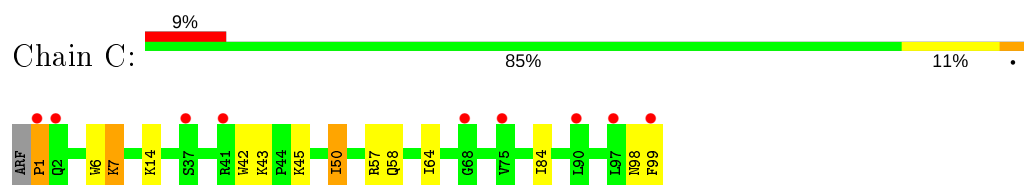
#### • Molecule 1: Protease



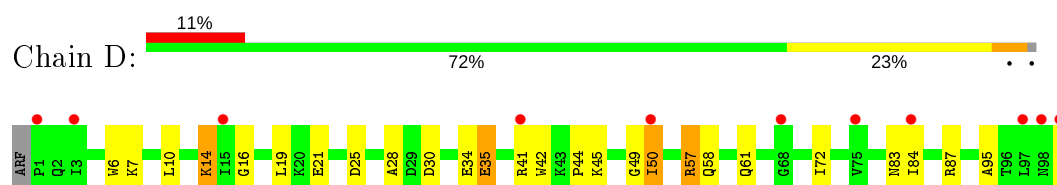
#### • Molecule 1: Protease



#### • Molecule 1: Protease



#### • Molecule 1: Protease



## 4 Data and refinement statistics

Property	Value	Source
Space group	P 1 21 1	Depositor
Cell constants a, b, c, $\alpha$ , $\beta$ , $\gamma$	51.29Å 62.78Å 59.17Å 90.00° 98.32° 90.00°	Depositor
Resolution (Å)	5.00 – 1.72 17.03 – 1.72	Depositor EDS
% Data completeness (in resolution range)	91.0 (5.00-1.72) 95.3 (17.03-1.72)	Depositor EDS
$R_{merge}$	(Not available)	Depositor
$R_{sym}$	(Not available)	Depositor
$\langle I/\sigma(I) \rangle$ <sup>1</sup>	1.27 (at 1.71Å)	Xtriage
Refinement program	SHELXL-97	Depositor
R, $R_{free}$	0.110 , 0.229 0.135 , 0.253	Depositor DCC
$R_{free}$ test set	1896 reflections (5.00%)	wwPDB-VP
Wilson B-factor (Å <sup>2</sup> )	21.3	Xtriage
Anisotropy	0.066	Xtriage
Bulk solvent $k_{sol}$ (e/Å <sup>3</sup> ), $B_{sol}$ (Å <sup>2</sup> )	0.50 , 106.0	EDS
L-test for twinning <sup>2</sup>	$\langle  L  \rangle = 0.49$ , $\langle L^2 \rangle = 0.33$	Xtriage
Estimated twinning fraction	No twinning to report.	Xtriage
$F_o, F_c$ correlation	0.96	EDS
Total number of atoms	3497	wwPDB-VP
Average B, all atoms (Å <sup>2</sup> )	30.0	wwPDB-VP

Xtriage's analysis on translational NCS is as follows: *The largest off-origin peak in the Patterson function is 8.99% of the height of the origin peak. No significant pseudotranslation is detected.*

<sup>1</sup>Intensities estimated from amplitudes.

<sup>2</sup>Theoretical values of  $\langle |L| \rangle$ ,  $\langle L^2 \rangle$  for acentric reflections are 0.5, 0.333 respectively for untwinned datasets, and 0.375, 0.2 for perfectly twinned datasets.



## 5 Model quality [i](#)

### 5.1 Standard geometry [i](#)

Bond lengths and bond angles in the following residue types are not validated in this section: NA, ROC, DMS, ARF, CL

The Z score for a bond length (or angle) is the number of standard deviations the observed value is removed from the expected value. A bond length (or angle) with  $|Z| > 5$  is considered an outlier worth inspection. RMSZ is the root-mean-square of all Z scores of the bond lengths (or angles).

Mol	Chain	Bond lengths		Bond angles	
		RMSZ	$\# Z  > 5$	RMSZ	$\# Z  > 5$
1	A	0.46	0/825	1.18	0/1114
1	B	0.51	0/817	1.24	2/1104 (0.2%)
1	C	0.46	0/786	1.15	0/1062
1	D	0.47	0/796	1.33	5/1074 (0.5%)
All	All	0.48	0/3224	1.22	7/4354 (0.2%)

There are no bond length outliers.

The worst 5 of 7 bond angle outliers are listed below:

Mol	Chain	Res	Type	Atoms	Z	Observed(°)	Ideal(°)
1	D	41	ARG	NE-CZ-NH1	-10.76	114.92	120.30
1	D	87	ARG	NE-CZ-NH2	-7.67	116.46	120.30
1	B	51[A]	ILE	CA-C-N	7.55	131.29	116.20
1	B	51[B]	ILE	CA-C-N	7.55	131.29	116.20
1	D	57	ARG	NE-CZ-NH1	-7.01	116.80	120.30

There are no chirality outliers.

There are no planarity outliers.

### 5.2 Too-close contacts [i](#)

In the following table, the Non-H and H(model) columns list the number of non-hydrogen atoms and hydrogen atoms in the chain respectively. The H(added) column lists the number of hydrogen atoms added and optimized by MolProbity. The Clashes column lists the number of clashes within the asymmetric unit, whereas Symm-Clashes lists symmetry related clashes.

Mol	Chain	Non-H	H(model)	H(added)	Clashes	Symm-Clashes
1	A	799	0	874	40	0
1	B	792	0	866	23	0

*Continued on next page...*

*Continued from previous page...*

Mol	Chain	Non-H	H(model)	H(added)	Clashes	Symm-Clashes
1	C	767	0	835	16	0
1	D	774	0	845	30	0
2	A	98	0	96	18	0
2	D	98	0	96	16	0
3	A	1	0	0	0	0
3	B	5	0	0	1	0
3	C	1	0	0	0	0
4	A	8	0	12	1	0
4	C	8	0	12	1	0
5	B	1	0	0	0	0
5	C	1	0	0	0	0
6	A	38	0	0	0	0
6	B	35	0	0	1	0
6	C	39	0	0	1	0
6	D	32	0	0	2	0
All	All	3497	0	3636	99	0

The all-atom clashscore is defined as the number of clashes found per 1000 atoms (including hydrogen atoms). The all-atom clashscore for this structure is 14.

The worst 5 of 99 close contacts within the same asymmetric unit are listed below, sorted by their clash magnitude.

Atom-1	Atom-2	Interatomic distance (Å)	Clash overlap (Å)
1:D:50:ILE:HG13	2:D:100[B]:ROC:H62	1.49	0.93
1:A:100:PHE:HB3	1:B:96:ALA:HA	1.62	0.79
1:D:84:ILE:HD11	2:D:100[B]:ROC:H321	1.63	0.78
1:A:15:LYS:HG2	4:A:103:DMS:H12	1.65	0.78
1:A:31:ASP:OD2	1:A:48[B]:ILE:HD11	1.84	0.77

There are no symmetry-related clashes.

## 5.3 Torsion angles [i](#)

### 5.3.1 Protein backbone [i](#)

In the following table, the Percentiles column shows the percent Ramachandran outliers of the chain as a percentile score with respect to all X-ray entries followed by that with respect to entries of similar resolution.

The Analysed column shows the number of residues for which the backbone conformation was analysed, and the total number of residues.

Mol	Chain	Analysed	Favoured	Allowed	Outliers	Percentiles	
1	A	105/100 (105%)	105 (100%)	0	0	100	100
1	B	104/100 (104%)	104 (100%)	0	0	100	100
1	C	99/100 (99%)	99 (100%)	0	0	100	100
1	D	100/100 (100%)	98 (98%)	2 (2%)	0	100	100
All	All	408/400 (102%)	406 (100%)	2 (0%)	0	100	100

There are no Ramachandran outliers to report.

### 5.3.2 Protein sidechains ⓘ

In the following table, the Percentiles column shows the percent sidechain outliers of the chain as a percentile score with respect to all X-ray entries followed by that with respect to entries of similar resolution.

The Analysed column shows the number of residues for which the sidechain conformation was analysed, and the total number of residues.

Mol	Chain	Analysed	Rotameric	Outliers	Percentiles	
1	A	87/81 (107%)	80 (92%)	7 (8%)	12	2
1	B	86/81 (106%)	84 (98%)	2 (2%)	50	31
1	C	83/81 (102%)	79 (95%)	4 (5%)	25	8
1	D	84/81 (104%)	80 (95%)	4 (5%)	25	8
All	All	340/324 (105%)	323 (95%)	17 (5%)	34	7

5 of 17 residues with a non-rotameric sidechain are listed below:

Mol	Chain	Res	Type
1	B	44[A]	LYS
1	B	44[B]	LYS
1	D	14[A]	LYS
1	A	71[B]	LYS
1	D	14[B]	LYS

Some sidechains can be flipped to improve hydrogen bonding and reduce clashes. All (5) such sidechains are listed below:

Mol	Chain	Res	Type
1	B	3	GLN
1	B	62	GLN
1	C	98	ASN

*Continued on next page...*

*Continued from previous page...*

Mol	Chain	Res	Type
1	D	61	GLN
1	D	98	ASN

### 5.3.3 RNA ⓘ

There are no RNA molecules in this entry.

## 5.4 Non-standard residues in protein, DNA, RNA chains ⓘ

2 non-standard protein/DNA/RNA residues are modelled in this entry.

In the following table, the Counts columns list the number of bonds (or angles) for which Mogul statistics could be retrieved, the number of bonds (or angles) that are observed in the model and the number of bonds (or angles) that are defined in the Chemical Component Dictionary. The Link column lists molecule types, if any, to which the group is linked. The Z score for a bond length (or angle) is the number of standard deviations the observed value is removed from the expected value. A bond length (or angle) with  $|Z| > 2$  is considered an outlier worth inspection. RMSZ is the root-mean-square of all Z scores of the bond lengths (or angles).

Mol	Type	Chain	Res	Link	Bond lengths			Bond angles		
					Counts	RMSZ	$\# Z  > 2$	Counts	RMSZ	$\# Z  > 2$
1	ARF	B	1	1	2,2,2	0.65	0	1,1,1	0.34	0
1	ARF	A	1	1	2,2,2	0.60	0	1,1,1	0.78	0

There are no bond length outliers.

There are no bond angle outliers.

There are no chirality outliers.

There are no torsion outliers.

There are no ring outliers.

1 monomer is involved in 1 short contact:

Mol	Chain	Res	Type	Clashes	Symm-Clashes
1	A	1	ARF	1	0

## 5.5 Carbohydrates ⓘ

There are no carbohydrates in this entry.

## 5.6 Ligand geometry

Of 17 ligands modelled in this entry, 9 are monoatomic - leaving 8 for Mogul analysis.

In the following table, the Counts columns list the number of bonds (or angles) for which Mogul statistics could be retrieved, the number of bonds (or angles) that are observed in the model and the number of bonds (or angles) that are defined in the Chemical Component Dictionary. The Link column lists molecule types, if any, to which the group is linked. The Z score for a bond length (or angle) is the number of standard deviations the observed value is removed from the expected value. A bond length (or angle) with  $|Z| > 2$  is considered an outlier worth inspection. RMSZ is the root-mean-square of all Z scores of the bond lengths (or angles).

Mol	Type	Chain	Res	Link	Bond lengths			Bond angles		
					Counts	RMSZ	$\# Z  > 2$	Counts	RMSZ	$\# Z  > 2$
4	DMS	A	104	-	3,3,3	0.51	0	3,3,3	0.84	0
4	DMS	A	103	-	3,3,3	0.55	0	3,3,3	1.01	0
4	DMS	C	103	-	3,3,3	0.59	0	3,3,3	0.80	0
2	ROC	A	101[A]	-	53,53,53	1.40	8 (15%)	72,75,75	2.04	17 (23%)
2	ROC	A	101[B]	-	53,53,53	1.39	8 (15%)	72,75,75	2.40	21 (29%)
2	ROC	D	100[A]	-	53,53,53	1.26	6 (11%)	72,75,75	2.09	22 (30%)
4	DMS	C	102	-	3,3,3	0.60	0	3,3,3	0.81	0
2	ROC	D	100[B]	-	53,53,53	1.37	7 (13%)	72,75,75	2.29	22 (30%)

In the following table, the Chirals column lists the number of chiral outliers, the number of chiral centers analysed, the number of these observed in the model and the number defined in the Chemical Component Dictionary. Similar counts are reported in the Torsion and Rings columns. '-' means no outliers of that kind were identified.

Mol	Type	Chain	Res	Link	Chirals	Torsions	Rings
2	ROC	D	100[A]	-	-	4/41/64/64	0/5/5/5
2	ROC	D	100[B]	-	-	6/41/64/64	0/5/5/5
2	ROC	A	101[A]	-	-	8/41/64/64	0/5/5/5
2	ROC	A	101[B]	-	-	10/41/64/64	0/5/5/5

The worst 5 of 29 bond length outliers are listed below:

Mol	Chain	Res	Type	Atoms	Z	Observed(Å)	Ideal(Å)
2	A	101[B]	ROC	O-C	4.41	1.32	1.23
2	A	101[A]	ROC	O-C	4.26	1.32	1.23
2	A	101[A]	ROC	C22-CD	-4.11	1.42	1.52
2	D	100[B]	ROC	C22-CD	-3.83	1.43	1.52
2	A	101[B]	ROC	C22-CD	-3.75	1.43	1.52

The worst 5 of 82 bond angle outliers are listed below:

Mol	Chain	Res	Type	Atoms	Z	Observed(°)	Ideal(°)
2	A	101[B]	ROC	C81-N11-C21	8.89	120.97	109.55
2	A	101[B]	ROC	C22-CD-C11	8.84	130.41	109.94
2	A	101[A]	ROC	C22-CD-C11	7.89	128.22	109.94
2	D	100[B]	ROC	C22-CD-C11	7.49	127.27	109.94
2	A	101[B]	ROC	C32-CD-C22	-6.48	94.93	109.94

There are no chirality outliers.

5 of 28 torsion outliers are listed below:

Mol	Chain	Res	Type	Atoms
2	A	101[A]	ROC	O2-C9-CM-N11
2	A	101[A]	ROC	CA1-C9-CM-N11
2	D	100[A]	ROC	O2-C9-CM-N11
2	D	100[A]	ROC	CA1-C9-CM-N11
2	A	101[B]	ROC	O2-C9-CM-N11

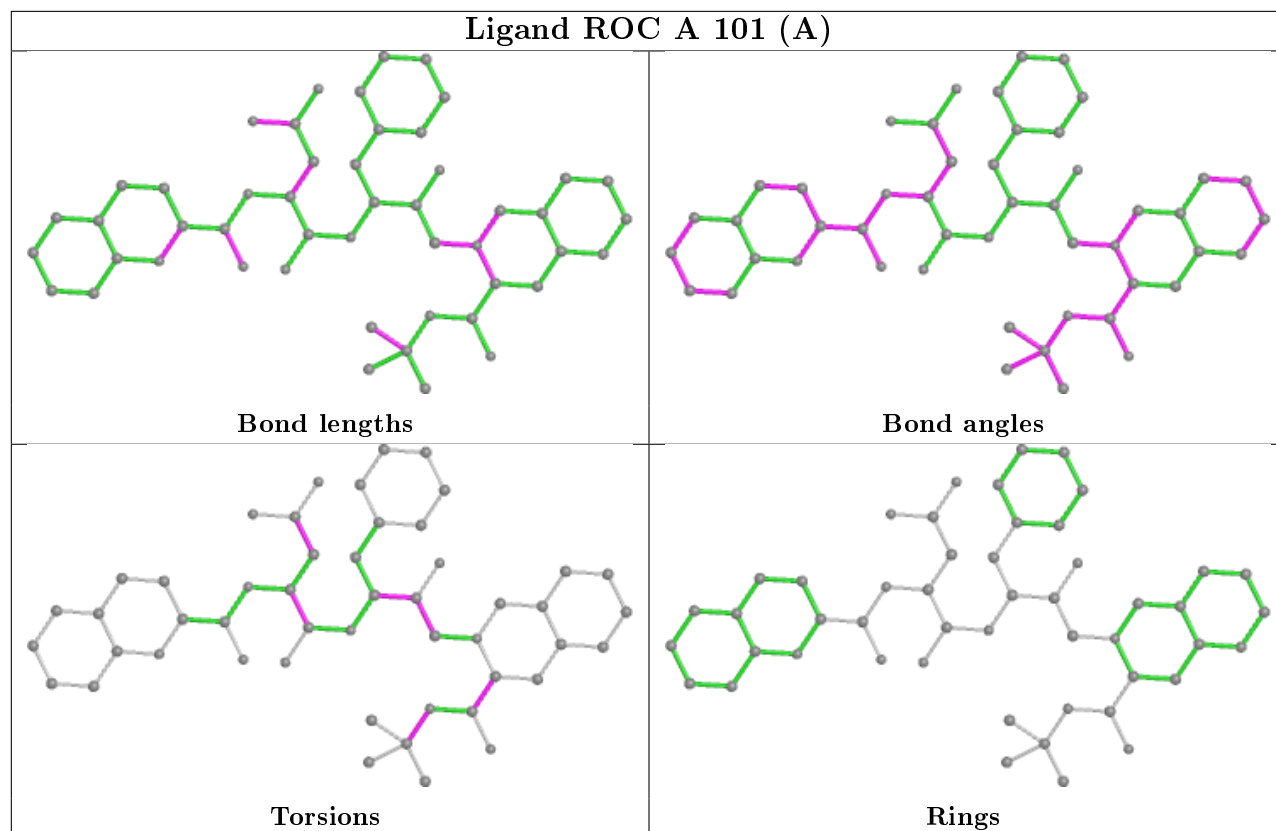
There are no ring outliers.

6 monomers are involved in 36 short contacts:

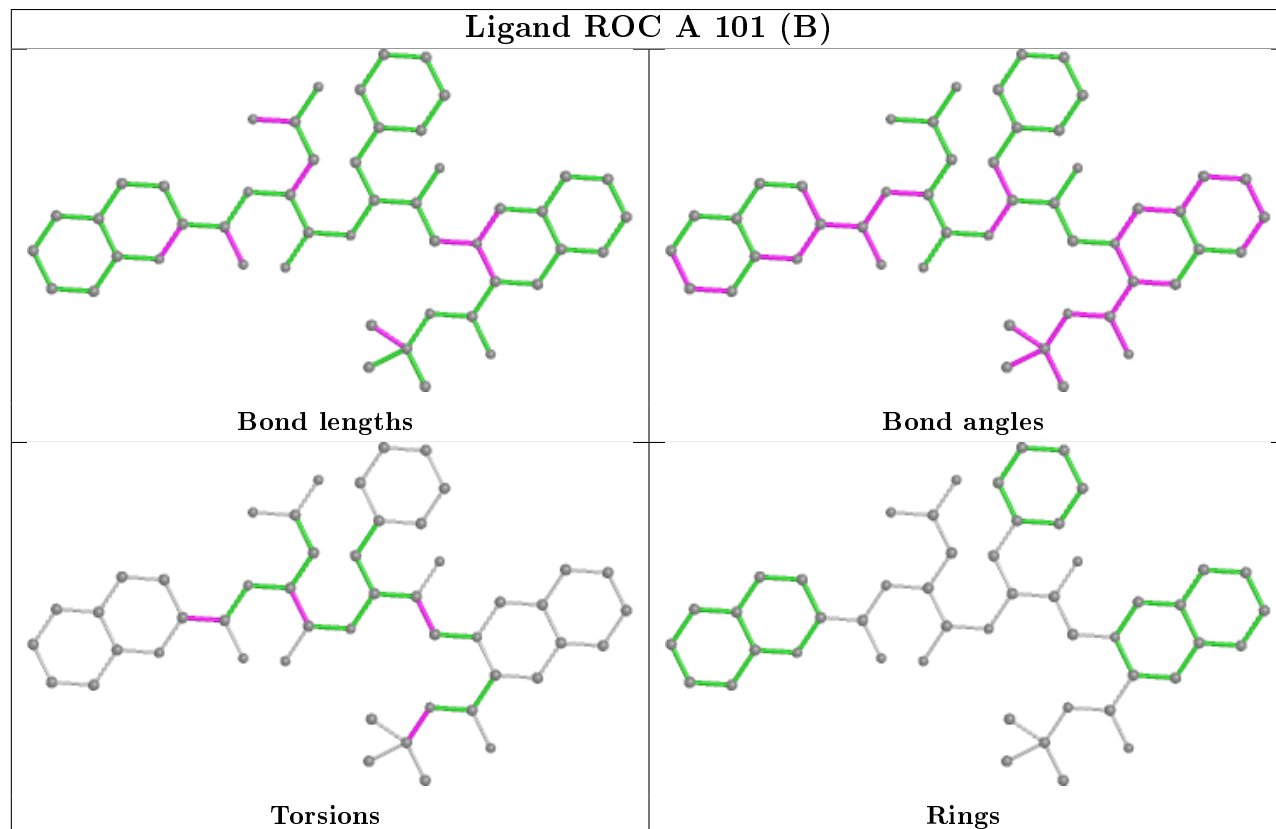
Mol	Chain	Res	Type	Clashes	Symm-Clashes
4	A	103	DMS	1	0
4	C	103	DMS	1	0
2	A	101[A]	ROC	3	0
2	A	101[B]	ROC	15	0
2	D	100[A]	ROC	3	0
2	D	100[B]	ROC	13	0

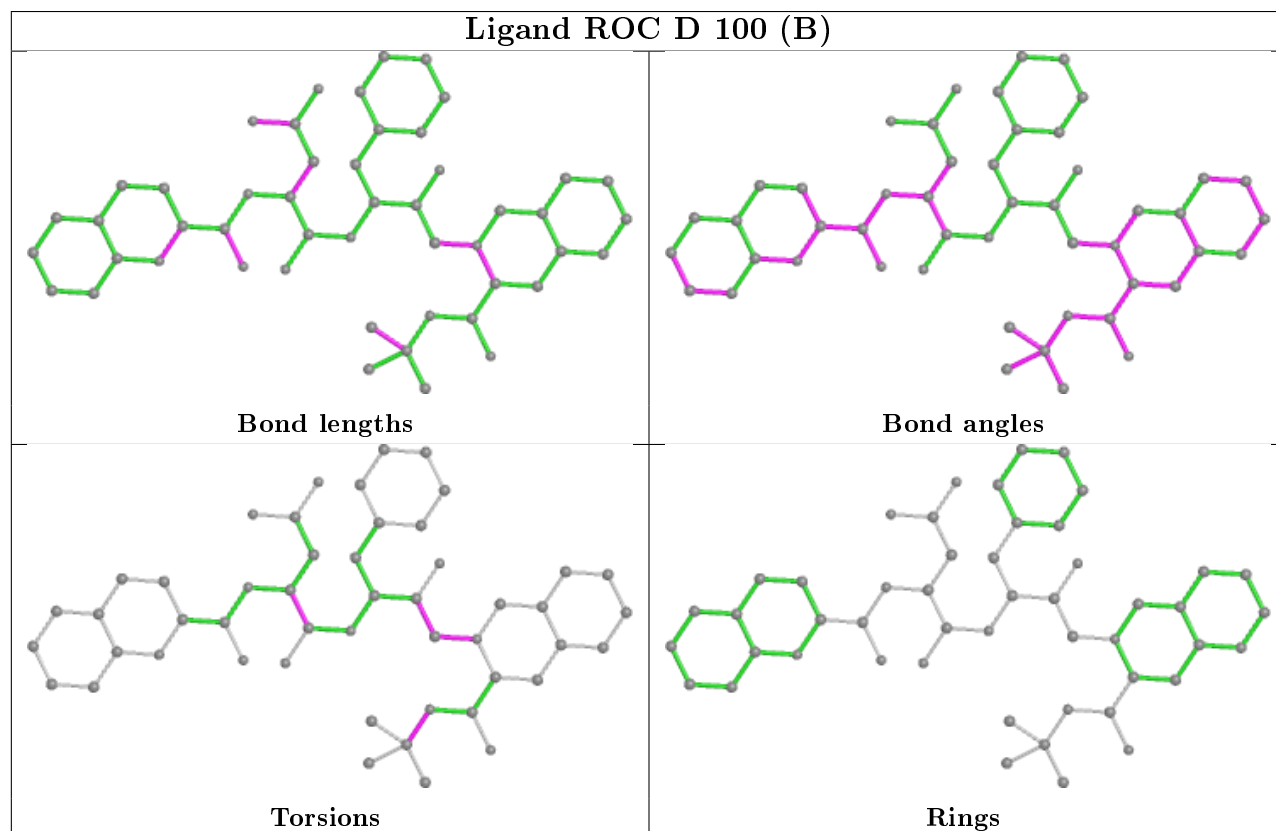
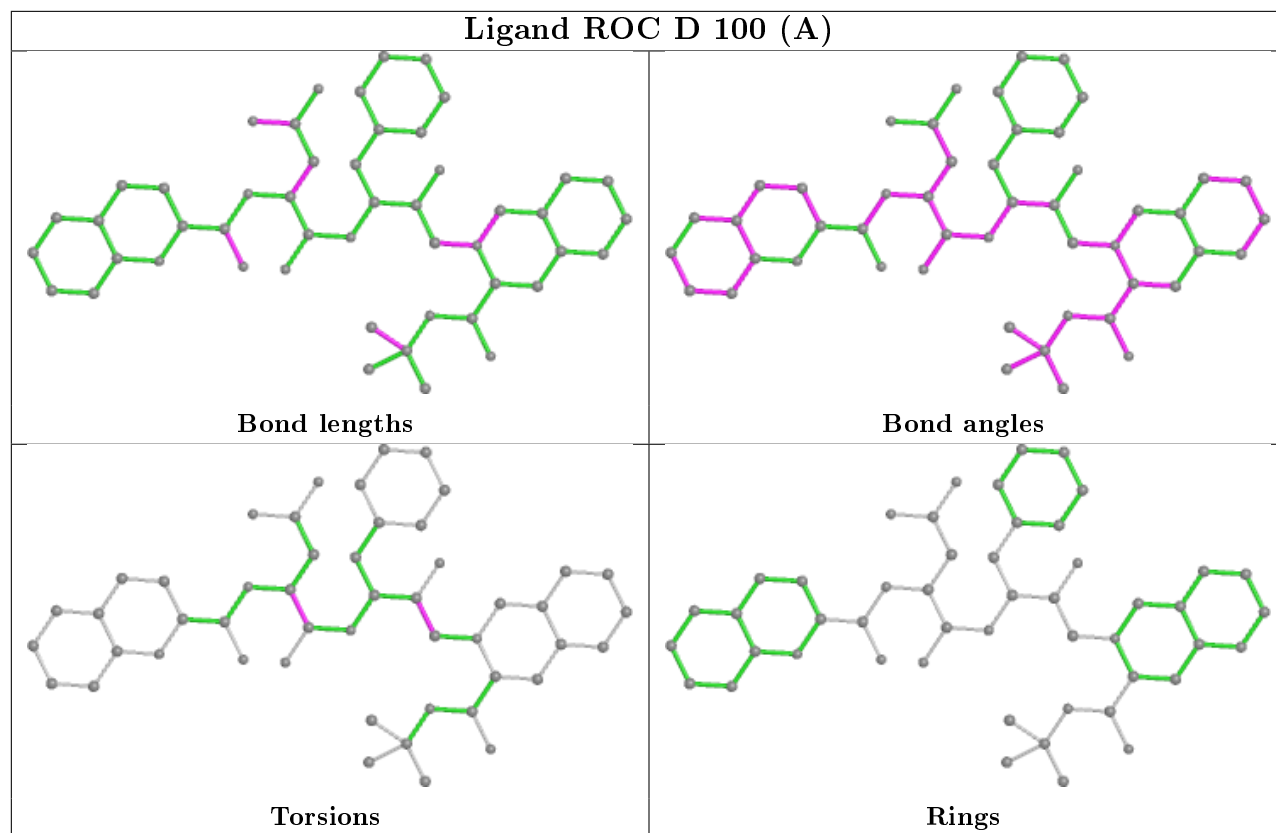
The following is a two-dimensional graphical depiction of Mogul quality analysis of bond lengths, bond angles, torsion angles, and ring geometry for all instances of the Ligand of Interest. In addition, ligands with molecular weight > 250 and outliers as shown on the validation Tables will also be included. For torsion angles, if less than 5% of the Mogul distribution of torsion angles is within 10 degrees of the torsion angle in question, then that torsion angle is considered an outlier. Any bond that is central to one or more torsion angles identified as an outlier by Mogul will be highlighted in the graph. For rings, the root-mean-square deviation (RMSD) between the ring in question and similar rings identified by Mogul is calculated over all ring torsion angles. If the average RMSD is greater than 60 degrees and the minimal RMSD between the ring in question and any Mogul-identified rings is also greater than 60 degrees, then that ring is considered an outlier. The outliers are highlighted in purple. The color gray indicates Mogul did not find sufficient equivalents in the CSD to analyse the geometry.

## Ligand ROC A 101 (A)



## Ligand ROC A 101 (B)







## 5.7 Other polymers [i](#)

There are no such residues in this entry.

## 5.8 Polymer linkage issues [i](#)

There are no chain breaks in this entry.

## 6 Fit of model and data [i](#)

### 6.1 Protein, DNA and RNA chains [i](#)

In the following table, the column labelled ‘#RSRZ> 2’ contains the number (and percentage) of RSRZ outliers, followed by percent RSRZ outliers for the chain as percentile scores relative to all X-ray entries and entries of similar resolution. The OWAB column contains the minimum, median, 95<sup>th</sup> percentile and maximum values of the occupancy-weighted average B-factor per residue. The column labelled ‘Q< 0.9’ lists the number of (and percentage) of residues with an average occupancy less than 0.9.

Mol	Chain	Analysed	<RSRZ>	#RSRZ>2	OWAB(Å <sup>2</sup> )	Q<0.9
1	A	99/100 (99%)	0.72	12 (12%) 4 4	20, 28, 41, 56	0
1	B	99/100 (99%)	0.57	9 (9%) 9 10	18, 24, 42, 74	0
1	C	99/100 (99%)	0.61	9 (9%) 9 10	19, 28, 42, 68	0
1	D	99/100 (99%)	0.58	11 (11%) 5 6	18, 27, 42, 71	0
All	All	396/400 (99%)	0.62	41 (10%) 6 7	18, 27, 42, 74	0

The worst 5 of 41 RSRZ outliers are listed below:

Mol	Chain	Res	Type	RSRZ
1	C	1	PRO	6.0
1	B	100	PHE	5.9
1	D	1	PRO	5.8
1	D	99	PHE	4.6
1	B	42	ARG	4.0

### 6.2 Non-standard residues in protein, DNA, RNA chains [i](#)

In the following table, the Atoms column lists the number of modelled atoms in the group and the number defined in the chemical component dictionary. The B-factors column lists the minimum, median, 95<sup>th</sup> percentile and maximum values of B factors of atoms in the group. The column labelled ‘Q< 0.9’ lists the number of atoms with occupancy less than 0.9.

Mol	Type	Chain	Res	Atoms	RSCC	RSR	B-factors(Å <sup>2</sup> )	Q<0.9
1	ARF	A	1	3/3	0.76	0.24	47,47,51,52	0
1	ARF	B	1	3/3	0.92	0.12	28,28,31,37	0

### 6.3 Carbohydrates [i](#)

There are no carbohydrates in this entry.

## 6.4 Ligands ⓘ

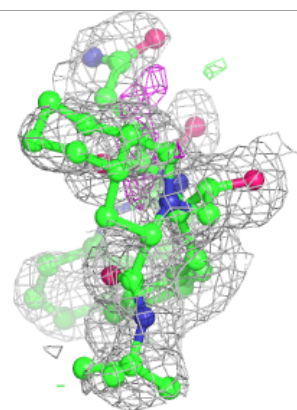
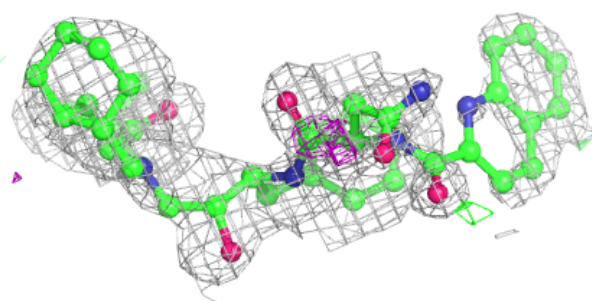
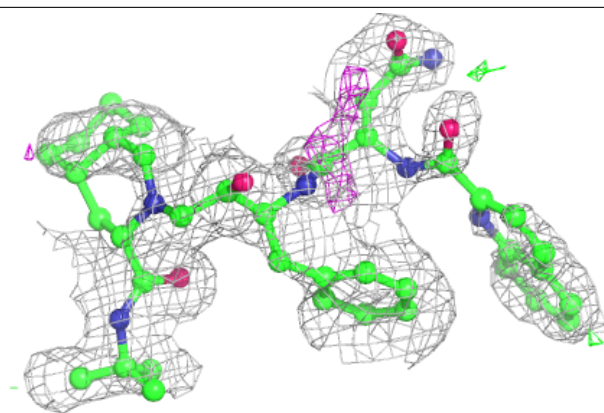
In the following table, the Atoms column lists the number of modelled atoms in the group and the number defined in the chemical component dictionary. The B-factors column lists the minimum, median, 95<sup>th</sup> percentile and maximum values of B factors of atoms in the group. The column labelled 'Q< 0.9' lists the number of atoms with occupancy less than 0.9.

Mol	Type	Chain	Res	Atoms	RSCC	RSR	B-factors(Å <sup>2</sup> )	Q<0.9
5	NA	C	100	1/1	0.82	0.11	64,64,64,64	0
3	CL	B	105	1/1	0.82	0.18	106,106,106,106	0
3	CL	B	106	1/1	0.86	0.13	104,104,104,104	0
3	CL	B	104	1/1	0.86	0.18	85,85,85,85	0
5	NA	B	101	1/1	0.87	0.12	65,65,65,65	0
4	DMS	A	104	4/4	0.87	0.18	46,51,57,105	0
4	DMS	A	103	4/4	0.89	0.20	40,46,55,82	0
3	CL	A	102	1/1	0.90	0.11	62,62,62,62	0
2	ROC	A	101[B]	49/49	0.91	0.16	15,21,26,28	49
2	ROC	D	100[A]	49/49	0.91	0.15	18,24,28,32	49
2	ROC	D	100[B]	49/49	0.91	0.15	19,23,28,29	49
2	ROC	A	101[A]	49/49	0.91	0.16	16,23,29,29	49
4	DMS	C	103	4/4	0.93	0.13	47,53,55,72	0
4	DMS	C	102	4/4	0.93	0.18	67,70,72,79	0
3	CL	B	103	1/1	0.94	0.14	73,73,73,73	0
3	CL	B	102	1/1	0.95	0.24	88,88,88,88	0
3	CL	C	101	1/1	0.95	0.09	62,62,62,62	0

The following is a graphical depiction of the model fit to experimental electron density of all instances of the Ligand of Interest. In addition, ligands with molecular weight > 250 and outliers as shown on the geometry validation Tables will also be included. Each fit is shown from different orientation to approximate a three-dimensional view.

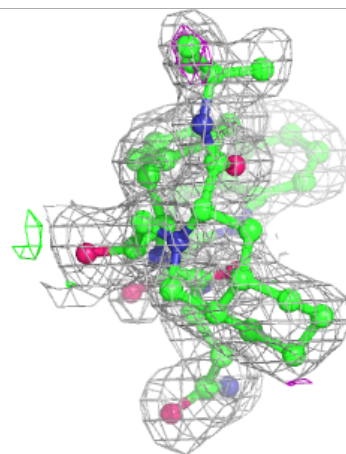
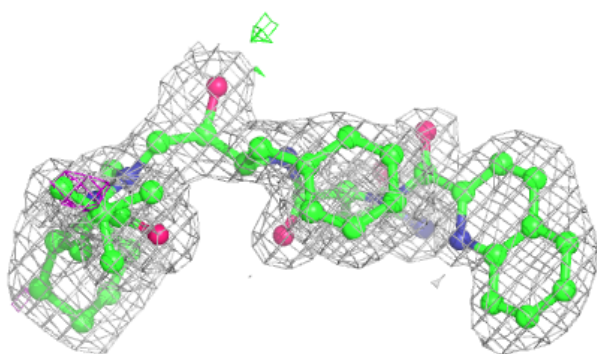
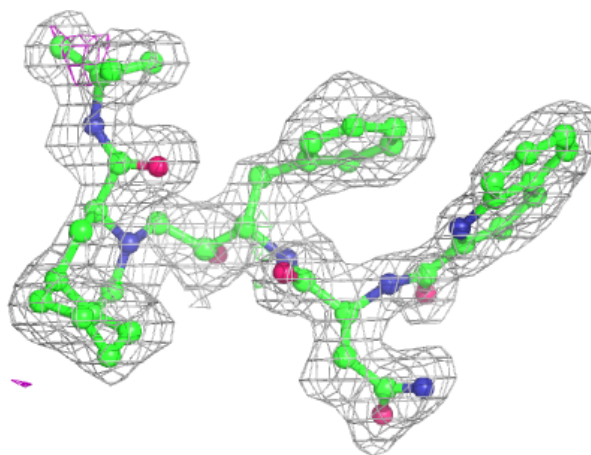
**Electron density around ROC A 101 (B):**

$2mF_o-DF_c$  (at 0.7 rmsd) in gray  
 $mF_o-DF_c$  (at 3 rmsd) in purple (negative)  
and green (positive)



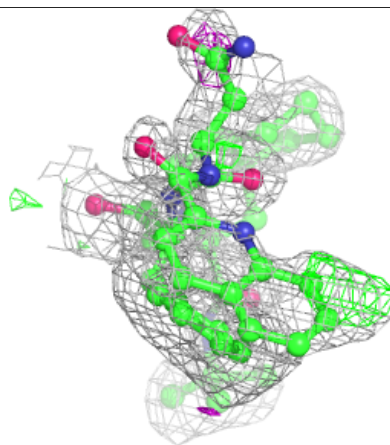
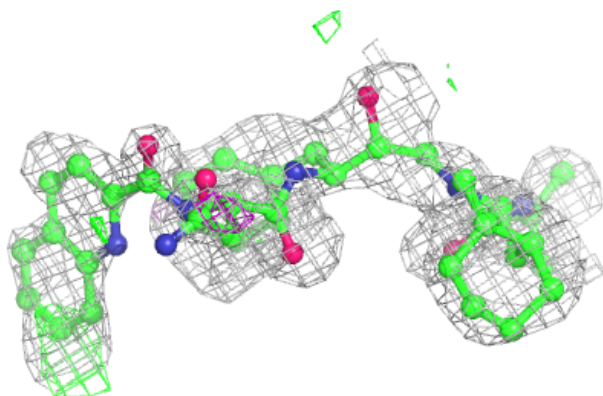
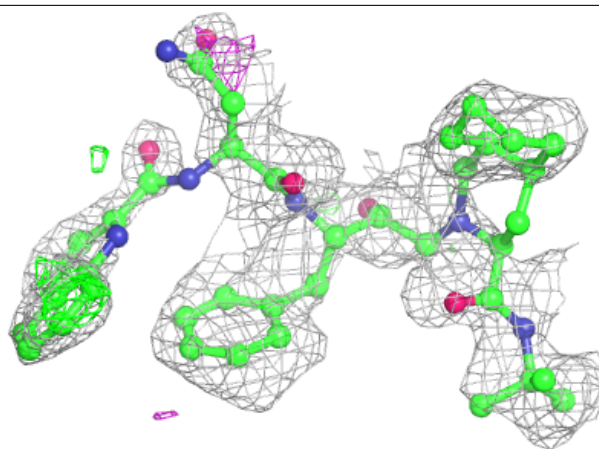
**Electron density around ROC D 100 (A):**

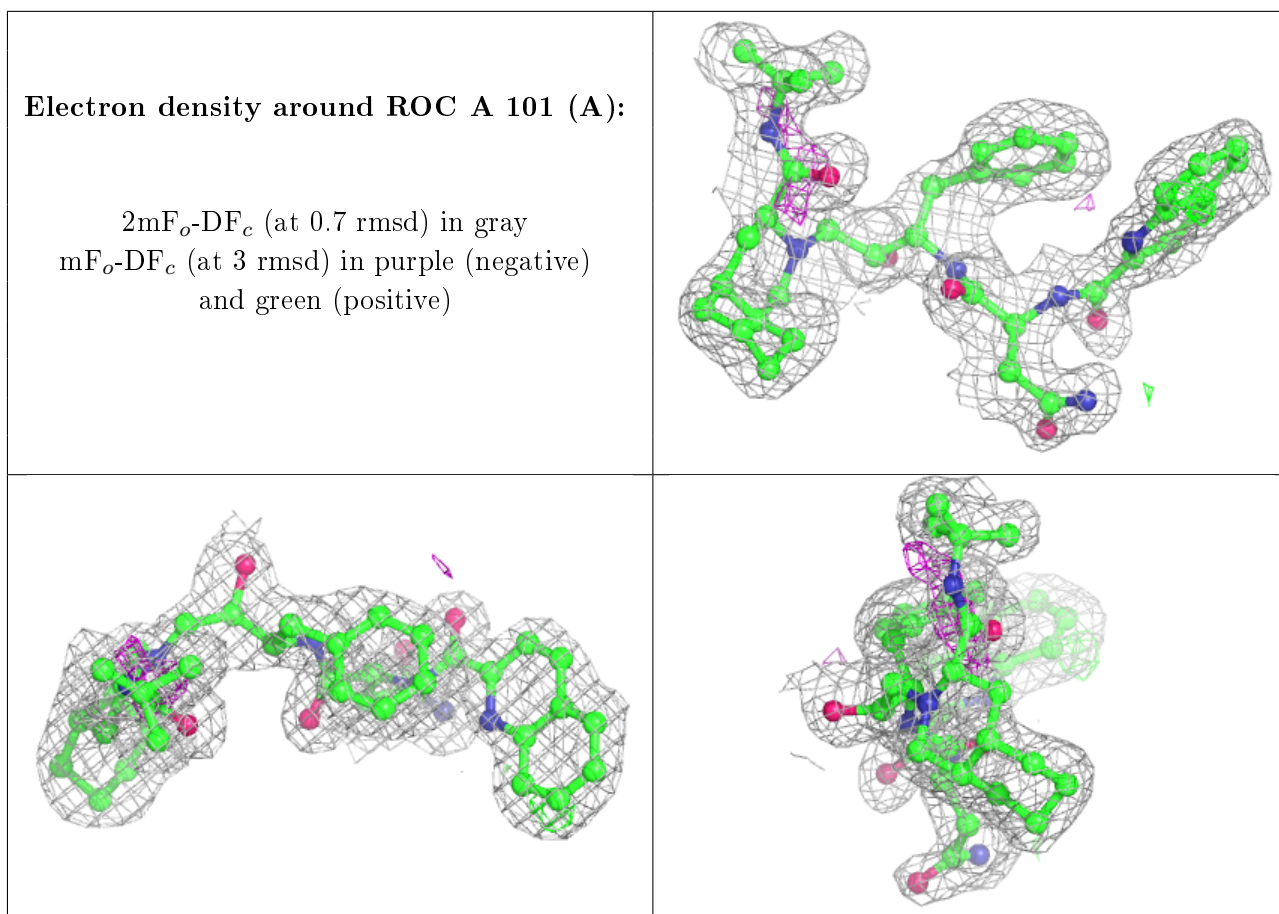
$2mF_o-DF_c$  (at 0.7 rmsd) in gray  
 $mF_o-DF_c$  (at 3 rmsd) in purple (negative)  
and green (positive)



**Electron density around ROC D 100 (B):**

$2mF_o-DF_c$  (at 0.7 rmsd) in gray  
 $mF_o-DF_c$  (at 3 rmsd) in purple (negative)  
and green (positive)





## 6.5 Other polymers [i](#)

There are no such residues in this entry.