



# Full wwPDB X-ray Structure Validation Report ⓘ

May 24, 2020 – 07:43 am BST

PDB ID : 4NDO  
Title : Crystal structure Molybdenum Storage Protein with fully Mo-loaded cavity  
Authors : Poppe, J.; Warkentin, E.; Demmer, U.; Ermler, U.  
Deposited on : 2013-10-27  
Resolution : 1.35 Å(reported)

This is a Full wwPDB X-ray Structure Validation Report for a publicly released PDB entry.

We welcome your comments at [validation@mail.wwpdb.org](mailto:validation@mail.wwpdb.org)

A user guide is available at

<https://www.wwpdb.org/validation/2017/XrayValidationReportHelp>

with specific help available everywhere you see the ⓘ symbol.

---

The following versions of software and data (see [references ⓘ](#)) were used in the production of this report:

MolProbity : 4.02b-467  
Mogul : 1.8.5 (274361), CSD as541be (2020)  
Xtriage (Phenix) : 1.13  
EDS : 2.11  
buster-report : 1.1.7 (2018)  
Percentile statistics : 20191225.v01 (using entries in the PDB archive December 25th 2019)  
Refmac : 5.8.0158  
CCP4 : 7.0.044 (Gargrove)  
Ideal geometry (proteins) : Engh & Huber (2001)  
Ideal geometry (DNA, RNA) : Parkinson et al. (1996)  
Validation Pipeline (wwPDB-VP) : 2.11

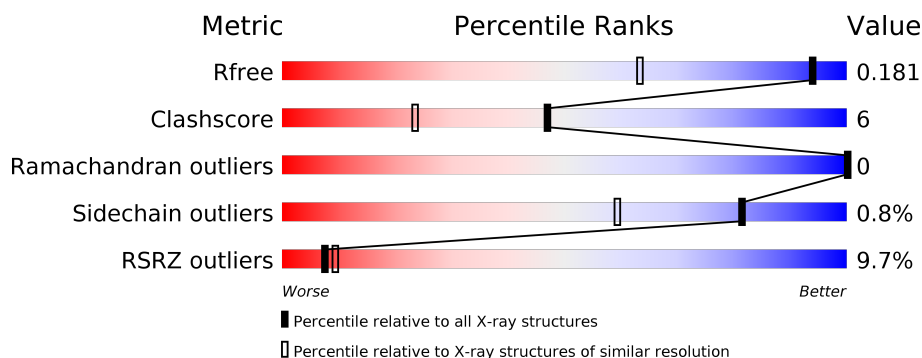
# 1 Overall quality at a glance

The following experimental techniques were used to determine the structure:

## *X-RAY DIFFRACTION*

The reported resolution of this entry is 1.35 Å.

Percentile scores (ranging between 0-100) for global validation metrics of the entry are shown in the following graphic. The table shows the number of entries on which the scores are based.



Metric	Whole archive (#Entries)	Similar resolution (#Entries, resolution range(Å))
$R_{free}$	130704	1509 (1.38-1.34)
Clashscore	141614	1551 (1.38-1.34)
Ramachandran outliers	138981	1530 (1.38-1.34)
Sidechain outliers	138945	1530 (1.38-1.34)
RSRZ outliers	127900	1487 (1.38-1.34)

The table below summarises the geometric issues observed across the polymeric chains and their fit to the electron density. The red, orange, yellow and green segments on the lower bar indicate the fraction of residues that contain outliers for  $\geq 3$ , 2, 1 and 0 types of geometric quality criteria respectively. A grey segment represents the fraction of residues that are not modelled. The numeric value for each fraction is indicated below the corresponding segment, with a dot representing fractions  $\leq 5\%$ . The upper red bar (where present) indicates the fraction of residues that have poor fit to the electron density. The numeric value is given above the bar.

Mol	Chain	Length	Quality of chain
1	B	270	<div> <div>13%</div> <div>87%</div> <div>11% ..</div> </div>
2	A	276	<div> <div>5%</div> <div>84%</div> <div>11%</div> </div>

The following table lists non-polymeric compounds, carbohydrate monomers and non-standard residues in protein, DNA, RNA chains that are outliers for geometric or electron-density-fit criteria:

Mol	Type	Chain	Res	Chirality	Geometry	Clashes	Electron density
5	MO	B	317	-	-	-	X

## 2 Entry composition [i](#)

There are 9 unique types of molecules in this entry. The entry contains 4645 atoms, of which 0 are hydrogens and 0 are deuteriums.

In the tables below, the ZeroOcc column contains the number of atoms modelled with zero occupancy, the AltConf column contains the number of residues with at least one atom in alternate conformation and the Trace column contains the number of residues modelled with at most 2 atoms.

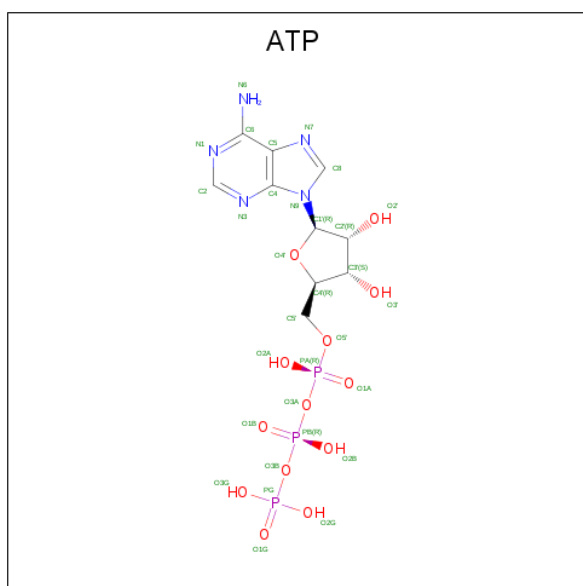
- Molecule 1 is a protein called Molybdenum storage protein subunit beta.

Mol	Chain	Residues	Atoms					ZeroOcc	AltConf	Trace
1	B	268	Total	C	N	O	S	0	29	0
			2126	1370	367	380	9			

- Molecule 2 is a protein called Molybdenum storage protein subunit alpha.

Mol	Chain	Residues	Atoms					ZeroOcc	AltConf	Trace
2	A	245	Total	C	N	O	S	0	9	0
			1879	1193	351	332	3			

- Molecule 3 is ADENOSINE-5'-TRIPHOSPHATE (three-letter code: ATP) (formula:  $C_{10}H_{16}N_5O_{13}P_3$ ).



Mol	Chain	Residues	Atoms					ZeroOcc	AltConf
3	B	1	Total	C	N	O	P	0	0
			31	10	5	13	3		
3	A	1	Total	C	N	O	P	0	0
			31	10	5	13	3		

- Molecule 5 is MOLYBDENUM ATOM (three-letter code: MO) (formula: Mo).

- Molecule 6 is PHOSPHATE ION (three-letter code: PO4) (formula:  $\text{O}_4\text{P}$ ).

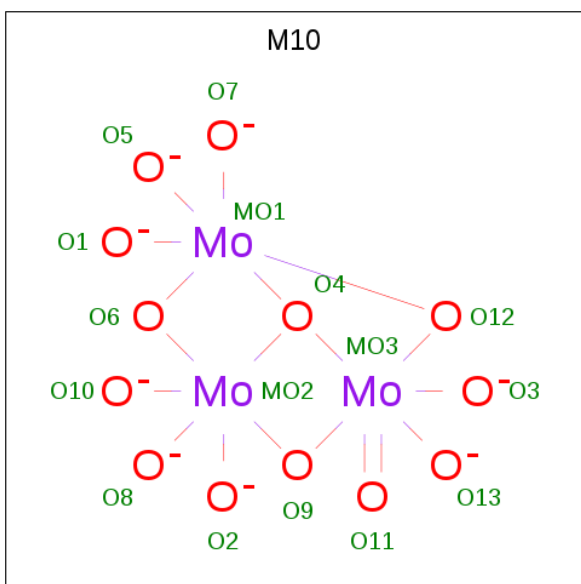


Mol	Chain	Residues	Atoms			ZeroOcc	AltConf
6	B	1	Total	O	P	0	0
			5	4	1		

- Molecule 7 is MAGNESIUM ION (three-letter code: MG) (formula: Mg).

Mol	Chain	Residues	Atoms		ZeroOcc	AltConf
7	A	1	Total	Mg	0	0
			1	1		

- Molecule 8 is (mu3-oxo)-tris(mu2-oxo)-nonakisoxo-trimolybdenum (VI) (three-letter code: M10) (formula: Mo<sub>3</sub>O<sub>13</sub>).



Mol	Chain	Residues	Atoms			ZeroOcc	AltConf
8	A	1	Total 6	Mo 2	O 4	0	0

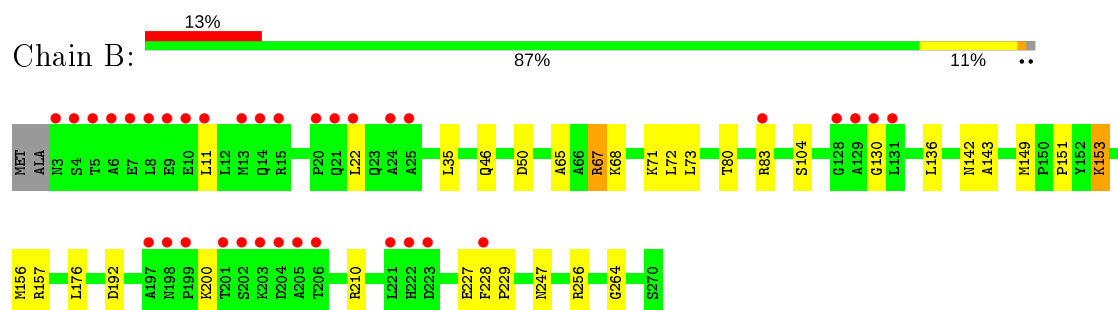
- Molecule 9 is water.

Mol	Chain	Residues	Atoms		ZeroOcc	AltConf
9	B	250	Total 250	O 250	0	0
9	A	225	Total 225	O 225	0	0

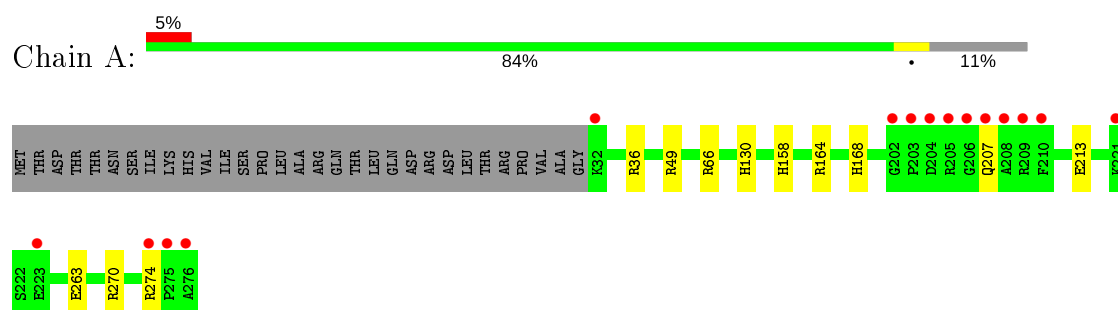
### 3 Residue-property plots [i](#)

These plots are drawn for all protein, RNA and DNA chains in the entry. The first graphic for a chain summarises the proportions of the various outlier classes displayed in the second graphic. The second graphic shows the sequence view annotated by issues in geometry and electron density. Residues are color-coded according to the number of geometric quality criteria for which they contain at least one outlier: green = 0, yellow = 1, orange = 2 and red = 3 or more. A red dot above a residue indicates a poor fit to the electron density ( $RSRZ > 2$ ). Stretches of 2 or more consecutive residues without any outlier are shown as a green connector. Residues present in the sample, but not in the model, are shown in grey.

- Molecule 1: Molybdenum storage protein subunit beta



- Molecule 2: Molybdenum storage protein subunit alpha





## 4 Data and refinement statistics

Property	Value	Source
Space group	P 63 2 2	Depositor
Cell constants a, b, c, $\alpha$ , $\beta$ , $\gamma$	115.60 Å   115.60 Å   234.10 Å 90.00°   90.00°   120.00°	Depositor
Resolution (Å)	9.99 – 1.35 48.95 – 1.30	Depositor EDS
% Data completeness (in resolution range)	99.1 (9.99-1.35) 94.7 (48.95-1.30)	Depositor EDS
$R_{merge}$	(Not available)	Depositor
$R_{sym}$	(Not available)	Depositor
$\langle I/\sigma(I) \rangle$ <sup>1</sup>	1.01 (at 1.30 Å)	Xtriage
Refinement program	PHENIX (phenix.refine: 1.8.1_1168), REFMAC	Depositor
R, $R_{free}$	0.160 , 0.177 0.166 , 0.181	Depositor DCC
$R_{free}$ test set	10639 reflections (5.00%)	wwPDB-VP
Wilson B-factor (Å <sup>2</sup> )	18.3	Xtriage
Anisotropy	0.394	Xtriage
Bulk solvent $k_{sol}$ (e/Å <sup>3</sup> ), $B_{sol}$ (Å <sup>2</sup> )	0.35 , 52.3	EDS
L-test for twinning <sup>2</sup>	$\langle  L  \rangle = 0.48$ , $\langle L^2 \rangle = 0.30$	Xtriage
Estimated twinning fraction	No twinning to report.	Xtriage
$F_o, F_c$ correlation	0.97	EDS
Total number of atoms	4645	wwPDB-VP
Average B, all atoms (Å <sup>2</sup> )	27.0	wwPDB-VP

Xtriage's analysis on translational NCS is as follows: *The largest off-origin peak in the Patterson function is 4.77% of the height of the origin peak. No significant pseudotranslation is detected.*

<sup>1</sup>Intensities estimated from amplitudes.

<sup>2</sup>Theoretical values of  $\langle |L| \rangle$ ,  $\langle L^2 \rangle$  for acentric reflections are 0.5, 0.333 respectively for untwinned datasets, and 0.375, 0.2 for perfectly twinned datasets.

## 5 Model quality [i](#)

### 5.1 Standard geometry [i](#)

Bond lengths and bond angles in the following residue types are not validated in this section: MG, MO, M10, ATP, 8M0, PO4

The Z score for a bond length (or angle) is the number of standard deviations the observed value is removed from the expected value. A bond length (or angle) with  $|Z| > 5$  is considered an outlier worth inspection. RMSZ is the root-mean-square of all Z scores of the bond lengths (or angles).

Mol	Chain	Bond lengths		Bond angles	
		RMSZ	$\# Z  > 5$	RMSZ	$\# Z  > 5$
1	B	0.68	0/2249	0.81	2/3050 (0.1%)
2	A	0.68	0/1946	0.79	2/2649 (0.1%)
All	All	0.68	0/4195	0.80	4/5699 (0.1%)

There are no bond length outliers.

All (4) bond angle outliers are listed below:

Mol	Chain	Res	Type	Atoms	Z	Observed(°)	Ideal(°)
2	A	49	ARG	NE-CZ-NH1	6.67	123.64	120.30
2	A	164	ARG	NE-CZ-NH2	-5.97	117.31	120.30
1	B	256[A]	ARG	NE-CZ-NH2	-5.29	117.66	120.30
1	B	256[B]	ARG	NE-CZ-NH2	-5.29	117.66	120.30

There are no chirality outliers.

There are no planarity outliers.

### 5.2 Too-close contacts [i](#)

In the following table, the Non-H and H(model) columns list the number of non-hydrogen atoms and hydrogen atoms in the chain respectively. The H(added) column lists the number of hydrogen atoms added and optimized by MolProbity. The Clashes column lists the number of clashes within the asymmetric unit, whereas Symm-Clashes lists symmetry related clashes.

Mol	Chain	Non-H	H(model)	H(added)	Clashes	Symm-Clashes
1	B	2126	0	2295	38	0
2	A	1879	0	1956	9	0
3	A	31	0	12	0	0
3	B	31	0	12	2	0
4	A	34	0	0	3	0

*Continued on next page...*

*Continued from previous page...*

Mol	Chain	Non-H	H(model)	H(added)	Clashes	Symm-Clashes
4	B	36	0	0	2	0
5	A	5	0	0	0	0
5	B	16	0	0	1	0
6	B	5	0	0	1	0
7	A	1	0	0	0	0
8	A	6	0	0	2	0
9	A	225	0	0	4	4
9	B	250	0	0	14	1
All	All	4645	0	4275	52	5

The all-atom clashscore is defined as the number of clashes found per 1000 atoms (including hydrogen atoms). The all-atom clashscore for this structure is 6.

All (52) close contacts within the same asymmetric unit are listed below, sorted by their clash magnitude.

Atom-1	Atom-2	Interatomic distance (Å)	Clash overlap (Å)
1:B:210[B]:ARG:NH2	6:B:319:PO4:O4	2.09	0.85
1:B:83:ARG:NH2	9:B:612:HOH:O	2.12	0.81
8:A:304:M10:O4	8:A:304:M10:MO2	1.56	0.77
1:B:200:LYS:NZ	3:B:301:ATP:O3'	2.21	0.73
3:B:301:ATP:O3G	9:B:402:HOH:O	2.05	0.73
1:B:67:ARG:HE	1:B:68[B]:LYS:NZ	1.88	0.72
1:B:73[A]:LEU:HD21	1:B:136[A]:LEU:HD11	1.72	0.71
1:B:227:GLU:OE1	9:B:508:HOH:O	2.10	0.69
5:B:309:MO:MO	9:B:582:HOH:O	1.70	0.62
1:B:73[B]:LEU:HD11	1:B:136[B]:LEU:HD21	1.81	0.61
8:A:304:M10:MO1	8:A:304:M10:O1	1.72	0.60
1:B:149[A]:MET:HE1	9:B:597:HOH:O	2.01	0.60
1:B:67:ARG:HE	1:B:68[B]:LYS:HZ2	1.50	0.60
4:A:303:8M0:MO2	4:A:303:8M0:O8	1.73	0.60
2:A:213:GLU:HG2	2:A:270:ARG:NH1	2.19	0.58
2:A:263:GLU:OE1	9:A:593:HOH:O	2.17	0.58
1:B:83:ARG:HG3	9:B:615:HOH:O	2.05	0.55
1:B:151:PRO:HB3	4:B:302:8M0:O4	2.07	0.55
4:A:303:8M0:O22	9:A:478:HOH:O	2.18	0.54
1:B:50:ASP:OD2	1:B:80[B]:THR:HG23	2.07	0.54
1:B:149[A]:MET:HE3	9:B:596:HOH:O	2.09	0.53
2:A:130:HIS:HB2	4:A:303:8M0:O21	2.08	0.53
1:B:157[B]:ARG:NH2	9:B:627:HOH:O	2.26	0.53
2:A:36:ARG:NH2	9:A:479:HOH:O	2.44	0.51
1:B:104[B]:SER:HA	1:B:149[B]:MET:HG3	1.92	0.51

*Continued on next page...*

Continued from previous page...

Atom-1	Atom-2	Interatomic distance (Å)	Clash overlap (Å)
1:B:68[A]:LYS:HD2	9:B:585:HOH:O	2.13	0.49
1:B:104[A]:SER:HA	1:B:149[A]:MET:HG3	1.95	0.48
1:B:228:PHE:CG	1:B:229:PRO:HD3	2.48	0.48
1:B:149[A]:MET:CE	9:B:596:HOH:O	2.60	0.48
1:B:80[B]:THR:CG2	9:B:492:HOH:O	2.61	0.47
1:B:65:ALA:O	1:B:68[B]:LYS:HG2	2.14	0.47
1:B:35[A]:LEU:HD11	1:B:130:GLY:O	2.16	0.46
2:A:213:GLU:HG2	2:A:270:ARG:HH12	1.81	0.46
1:B:192:ASP:O	1:B:264:GLY:HA2	2.16	0.46
1:B:192:ASP:HA	1:B:247:ASN:HB2	1.98	0.45
1:B:11:LEU:HB3	1:B:22[B]:LEU:HD23	1.99	0.45
1:B:157[B]:ARG:CZ	2:A:168:HIS:NE2	2.80	0.45
1:B:67:ARG:HE	1:B:68[B]:LYS:HZ3	1.61	0.44
1:B:228:PHE:CD2	1:B:229:PRO:HD3	2.51	0.44
1:B:156:MET:HE3	9:B:596:HOH:O	2.17	0.44
1:B:71[A]:LYS:HG2	1:B:142[A]:ASN:OD1	2.18	0.43
1:B:153[A]:LYS:HE3	1:B:153[A]:LYS:HB3	1.76	0.43
1:B:46:GLN:HG3	9:B:492:HOH:O	2.19	0.43
1:B:71[B]:LYS:HE2	1:B:71[B]:LYS:HB2	1.78	0.43
1:B:67:ARG:HD2	1:B:68[B]:LYS:HD3	2.02	0.42
2:A:274:ARG:HA	2:A:274:ARG:HD3	1.88	0.41
2:A:66:ARG:HD3	9:A:500:HOH:O	2.20	0.41
1:B:149[B]:MET:HB2	9:B:558:HOH:O	2.21	0.41
1:B:72:LEU:O	1:B:143:ALA:HA	2.22	0.40
4:B:302:8M0:O14	2:A:158:HIS:HE1	2.04	0.40
1:B:73[B]:LEU:HD23	1:B:176:LEU:HD21	2.03	0.40

All (5) symmetry-related close contacts are listed below. The label for Atom-2 includes the symmetry operator and encoded unit-cell translations to be applied.

Atom-1	Atom-2	Interatomic distance (Å)	Clash overlap (Å)
9:A:577:HOH:O	9:A:586:HOH:O[12_555]	1.89	0.31
9:A:542:HOH:O	9:A:542:HOH:O[10_665]	2.03	0.17
9:A:565:HOH:O	9:A:586:HOH:O[12_555]	2.10	0.10
9:A:606:HOH:O	9:A:606:HOH:O[10_665]	2.13	0.07
9:B:634:HOH:O	9:B:634:HOH:O[8_555]	2.19	0.01

## 5.3 Torsion angles

### 5.3.1 Protein backbone

In the following table, the Percentiles column shows the percent Ramachandran outliers of the chain as a percentile score with respect to all X-ray entries followed by that with respect to entries of similar resolution.

The Analysed column shows the number of residues for which the backbone conformation was analysed, and the total number of residues.

Mol	Chain	Analysed	Favoured	Allowed	Outliers	Percentiles	
1	B	295/270 (109%)	287 (97%)	8 (3%)	0	100	100
2	A	252/276 (91%)	247 (98%)	5 (2%)	0	100	100
All	All	547/546 (100%)	534 (98%)	13 (2%)	0	100	100

There are no Ramachandran outliers to report.

### 5.3.2 Protein sidechains

In the following table, the Percentiles column shows the percent sidechain outliers of the chain as a percentile score with respect to all X-ray entries followed by that with respect to entries of similar resolution.

The Analysed column shows the number of residues for which the sidechain conformation was analysed, and the total number of residues.

Mol	Chain	Analysed	Rotameric	Outliers	Percentiles	
1	B	234/206 (114%)	231 (99%)	3 (1%)	69	37
2	A	197/216 (91%)	196 (100%)	1 (0%)	88	74
All	All	431/422 (102%)	427 (99%)	4 (1%)	81	53

All (4) residues with a non-rotameric sidechain are listed below:

Mol	Chain	Res	Type
1	B	67	ARG
1	B	153[A]	LYS
1	B	153[B]	LYS
2	A	207	GLN

Some sidechains can be flipped to improve hydrogen bonding and reduce clashes. There are no such sidechains identified.

### 5.3.3 RNA ⓘ

There are no RNA molecules in this entry.

## 5.4 Non-standard residues in protein, DNA, RNA chains ⓘ

There are no non-standard protein/DNA/RNA residues in this entry.

## 5.5 Carbohydrates ⓘ

There are no carbohydrates in this entry.

## 5.6 Ligand geometry ⓘ

Of 28 ligands modelled in this entry, 22 are monoatomic - leaving 6 for Mogul analysis.

In the following table, the Counts columns list the number of bonds (or angles) for which Mogul statistics could be retrieved, the number of bonds (or angles) that are observed in the model and the number of bonds (or angles) that are defined in the Chemical Component Dictionary. The Link column lists molecule types, if any, to which the group is linked. The Z score for a bond length (or angle) is the number of standard deviations the observed value is removed from the expected value. A bond length (or angle) with  $|Z| > 2$  is considered an outlier worth inspection. RMSZ is the root-mean-square of all Z scores of the bond lengths (or angles).

Mol	Type	Chain	Res	Link	Bond lengths			Bond angles		
					Counts	RMSZ	# Z  > 2	Counts	RMSZ	# Z  > 2
8	M10	A	304	-	0,5,18	0.00	-	-		
3	ATP	B	301	-	26,33,33	1.32	3 (11%)	31,52,52	1.99	10 (32%)
4	8M0	B	302	-	22,48,48	8.22	12 (54%)	-		
4	8M0	A	303	2	14,46,48	6.63	9 (64%)	-		
3	ATP	A	301	7	26,33,33	1.11	2 (7%)	31,52,52	1.15	2 (6%)
6	PO4	B	319	-	4,4,4	0.87	0	6,6,6	0.54	0

In the following table, the Chirals column lists the number of chiral outliers, the number of chiral centers analysed, the number of these observed in the model and the number defined in the Chemical Component Dictionary. Similar counts are reported in the Torsion and Rings columns. '-' means no outliers of that kind were identified.

Mol	Type	Chain	Res	Link	Chirals	Torsions	Rings
3	ATP	A	301	7	-	2/18/38/38	0/3/3/3
3	ATP	B	301	-	-	2/18/38/38	0/3/3/3

All (26) bond length outliers are listed below:

Mol	Chain	Res	Type	Atoms	Z	Observed(Å)	Ideal(Å)
4	B	302	8M0	O7-MO4	24.04	1.97	1.74
4	B	302	8M0	O20-MO8	19.47	1.93	1.74
4	A	303	8M0	O7-MO4	15.68	1.89	1.74
4	A	303	8M0	O20-MO8	11.52	1.85	1.74
4	B	302	8M0	O9-MO3	11.25	1.85	1.71
4	B	302	8M0	O10-MO3	9.68	1.83	1.71
4	A	303	8M0	O23-MO7	9.40	1.84	1.68
4	B	302	8M0	O23-MO7	8.30	1.82	1.68
4	B	302	8M0	O1-MO1	8.26	1.82	1.68
4	A	303	8M0	O1-MO1	7.40	1.81	1.68
4	A	303	8M0	O18-MO6	6.65	1.80	1.68
4	B	302	8M0	O18-MO6	6.55	1.79	1.68
4	B	302	8M0	O13-MO5	5.68	1.78	1.71
4	B	302	8M0	O28-MO5	5.55	1.78	1.71
4	B	302	8M0	O25-MO8	5.06	2.14	1.88
4	A	303	8M0	O13-MO5	4.57	1.77	1.67
4	B	302	8M0	O26-MO4	4.53	2.11	1.88
4	B	302	8M0	O8-MO2	4.21	1.75	1.68
3	B	301	ATP	C2-N3	3.63	1.38	1.32
4	A	303	8M0	O14-MO5	3.05	2.00	1.89
4	A	303	8M0	O8-MO2	2.85	1.73	1.68
4	A	303	8M0	O9-MO3	2.83	1.73	1.67
3	B	301	ATP	C5-C4	2.65	1.47	1.40
3	B	301	ATP	C2-N1	2.65	1.38	1.33
3	A	301	ATP	C2-N3	2.55	1.36	1.32
3	A	301	ATP	C5-C4	2.33	1.47	1.40

All (12) bond angle outliers are listed below:

Mol	Chain	Res	Type	Atoms	Z	Observed(°)	Ideal(°)
3	B	301	ATP	O3G-PG-O3B	4.81	120.75	104.64
3	B	301	ATP	N3-C2-N1	-3.61	123.04	128.68
3	B	301	ATP	O3B-PG-O1G	-3.40	92.33	111.19
3	B	301	ATP	PB-O3B-PG	-3.26	121.64	132.83
3	A	301	ATP	O5'-C5'-C4'	-3.23	97.87	108.99
3	A	301	ATP	N3-C2-N1	-3.00	123.98	128.68
3	B	301	ATP	PA-O3A-PB	-3.00	122.52	132.83
3	B	301	ATP	C1'-N9-C4	2.91	131.75	126.64
3	B	301	ATP	O3G-PG-O2G	2.55	117.39	107.64
3	B	301	ATP	O2G-PG-O3B	-2.47	96.35	104.64
3	B	301	ATP	C3'-C2'-C1'	2.39	104.58	100.98
3	B	301	ATP	O2'-C2'-C1'	-2.03	103.36	110.85

There are no chirality outliers.

All (4) torsion outliers are listed below:

Mol	Chain	Res	Type	Atoms
3	A	301	ATP	C3'-C4'-C5'-O5'
3	A	301	ATP	O4'-C4'-C5'-O5'
3	B	301	ATP	C3'-C4'-C5'-O5'
3	B	301	ATP	C4'-C5'-O5'-PA

There are no ring outliers.

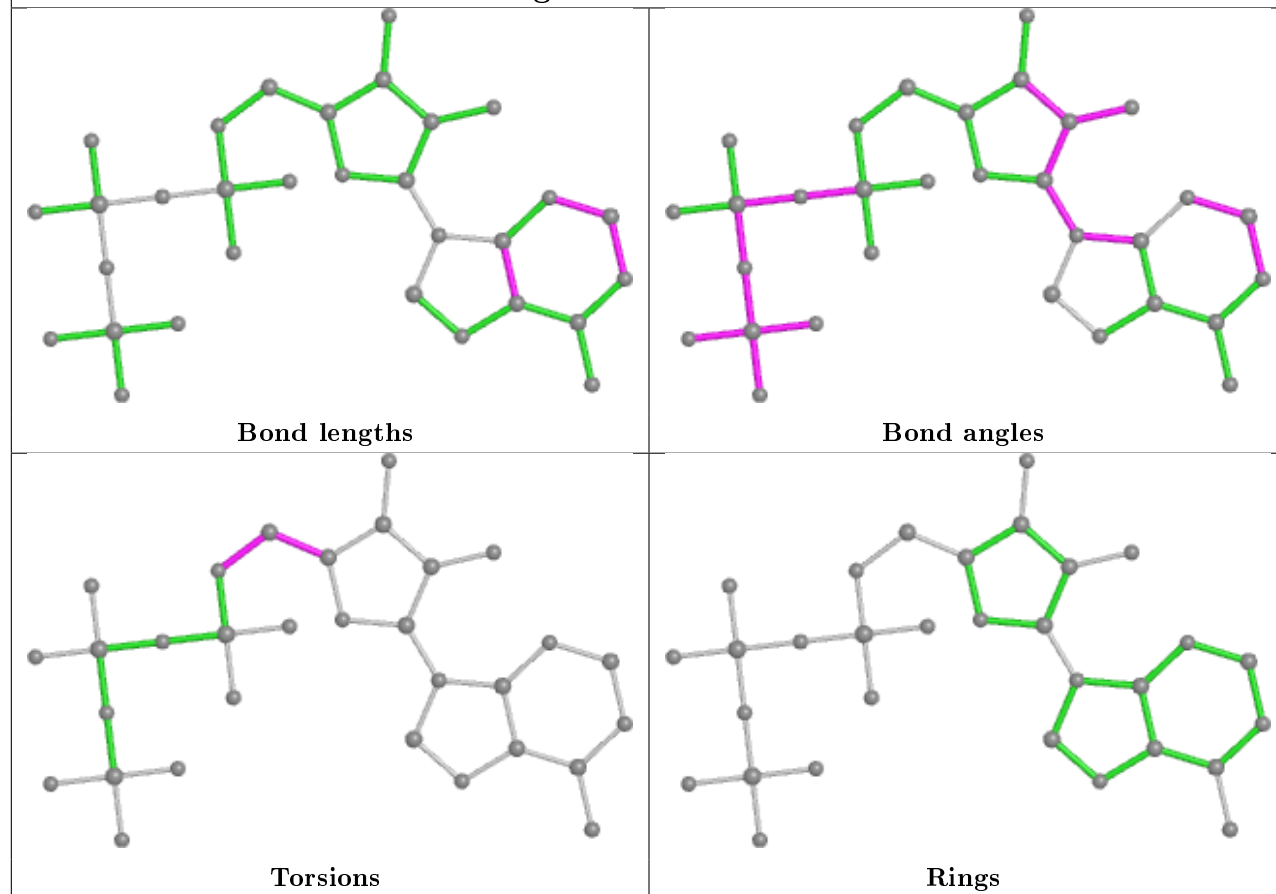
5 monomers are involved in 10 short contacts:

Mol	Chain	Res	Type	Clashes	Symm-Clashes
8	A	304	M10	2	0
3	B	301	ATP	2	0
4	B	302	8M0	2	0
4	A	303	8M0	3	0
6	B	319	PO4	1	0

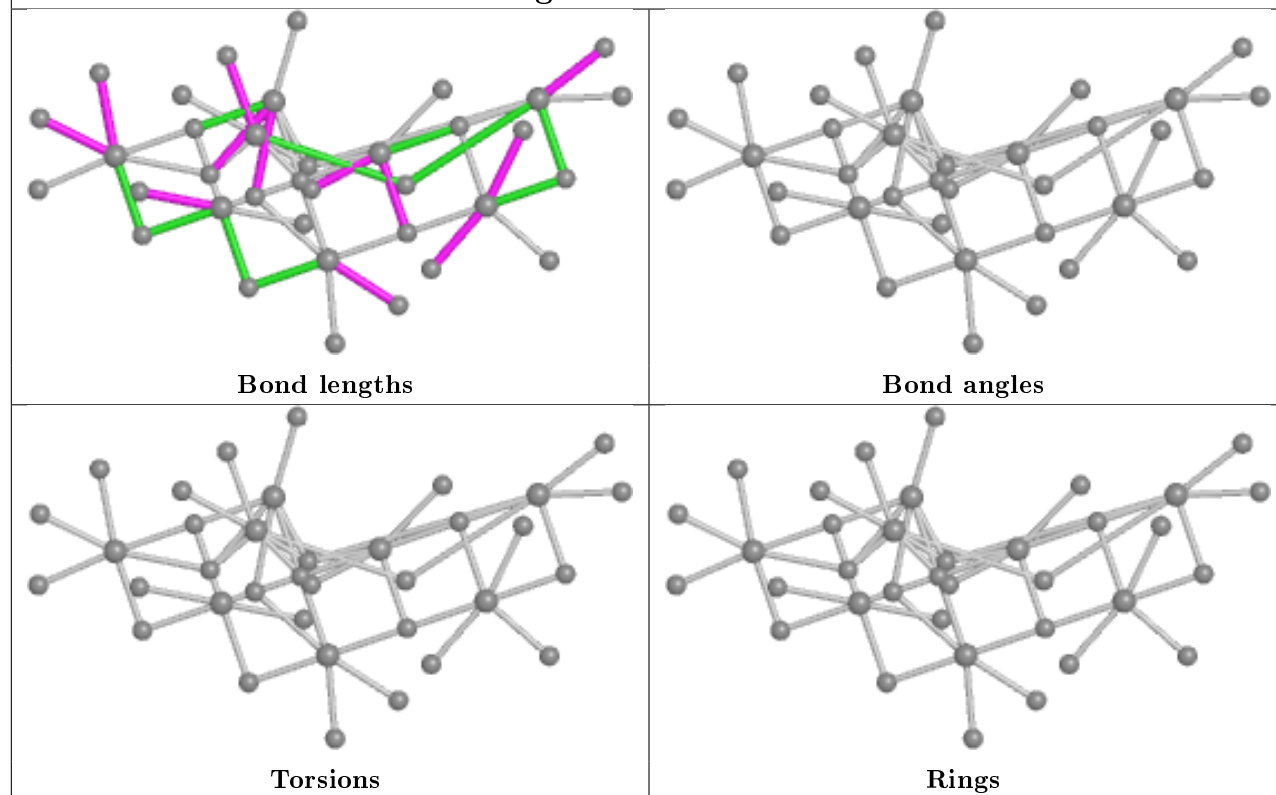
The following is a two-dimensional graphical depiction of Mogul quality analysis of bond lengths, bond angles, torsion angles, and ring geometry for all instances of the Ligand of Interest. In addition, ligands with molecular weight > 250 and outliers as shown on the validation Tables will also be included. For torsion angles, if less than 5% of the Mogul distribution of torsion angles is within 10 degrees of the torsion angle in question, then that torsion angle is considered an outlier. Any bond that is central to one or more torsion angles identified as an outlier by Mogul will be highlighted in the graph. For rings, the root-mean-square deviation (RMSD) between the ring in question and similar rings identified by Mogul is calculated over all ring torsion angles. If the average RMSD is greater than 60 degrees and the minimal RMSD between the ring in question and any Mogul-identified rings is also greater than 60 degrees, then that ring is considered an outlier. The outliers are highlighted in purple. The color gray indicates Mogul did not find sufficient equivalents in the CSD to analyse the geometry.



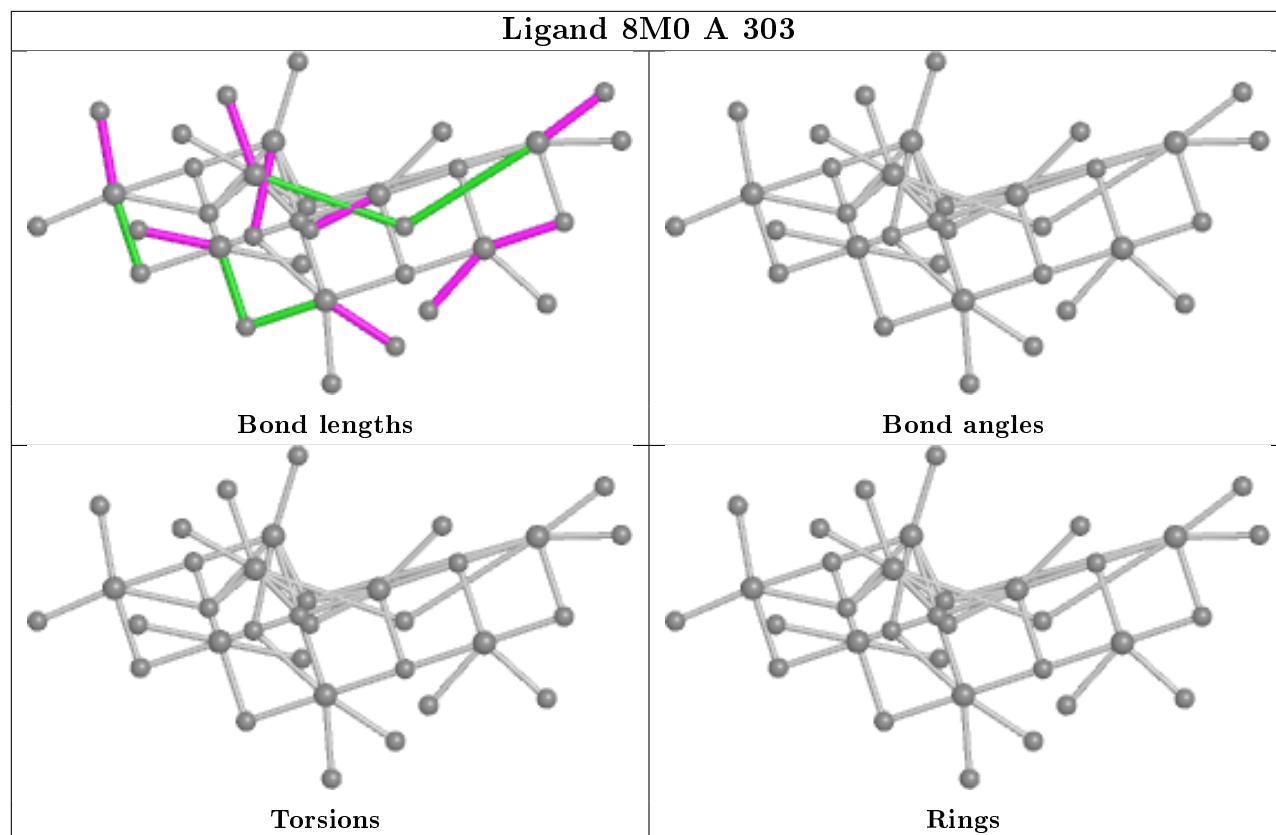
## Ligand ATP B 301



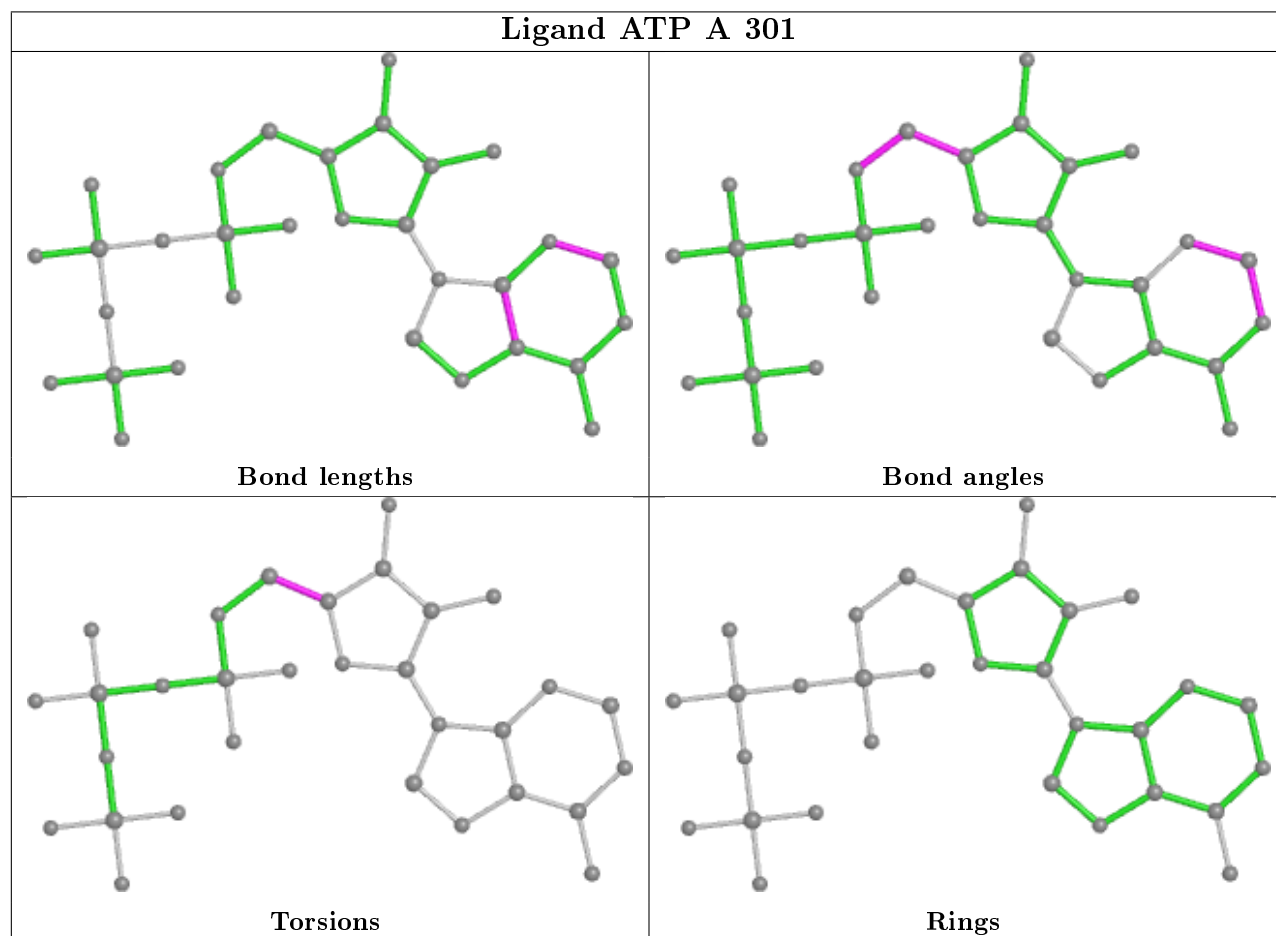
## Ligand 8M0 B 302



## Ligand 8M0 A 303



## Ligand ATP A 301



## 5.7 Other polymers [i](#)

There are no such residues in this entry.

## 5.8 Polymer linkage issues [i](#)

There are no chain breaks in this entry.

## 6 Fit of model and data ⓘ

### 6.1 Protein, DNA and RNA chains ⓘ

In the following table, the column labelled ‘#RSRZ> 2’ contains the number (and percentage) of RSRZ outliers, followed by percent RSRZ outliers for the chain as percentile scores relative to all X-ray entries and entries of similar resolution. The OWAB column contains the minimum, median, 95<sup>th</sup> percentile and maximum values of the occupancy-weighted average B-factor per residue. The column labelled ‘Q< 0.9’ lists the number of (and percentage) of residues with an average occupancy less than 0.9.

Mol	Chain	Analysed	<RSRZ>	#RSRZ>2	OWAB(Å <sup>2</sup> )	Q<0.9
1	B	268/270 (99%)	0.52	35 (13%) 3 3	17, 24, 55, 77	0
2	A	245/276 (88%)	0.21	15 (6%) 21 23	14, 19, 44, 58	0
All	All	513/546 (93%)	0.37	50 (9%) 7 9	14, 22, 51, 77	0

All (50) RSRZ outliers are listed below:

Mol	Chain	Res	Type	RSRZ
1	B	3	ASN	9.9
1	B	222	HIS	8.7
1	B	6	ALA	8.3
1	B	5	THR	7.5
1	B	4	SER	7.2
1	B	221	LEU	6.8
2	A	203	PRO	6.5
1	B	7	GLU	6.2
2	A	276	ALA	6.1
1	B	203	LYS	5.9
1	B	204	ASP	5.4
2	A	275	PRO	5.0
1	B	223	ASP	4.5
2	A	209[A]	ARG	4.5
2	A	207	GLN	4.4
1	B	130	GLY	4.4
2	A	274	ARG	4.3
2	A	32	LYS	4.1
1	B	228	PHE	4.1
1	B	197	ALA	4.0
1	B	201	THR	3.8
1	B	202	SER	3.6
1	B	10	GLU	3.6
2	A	204	ASP	3.5

*Continued on next page...*

*Continued from previous page...*

Mol	Chain	Res	Type	RSRZ
1	B	129	ALA	3.4
2	A	202	GLY	3.3
1	B	22[A]	LEU	3.1
2	A	223	GLU	3.1
2	A	205	ARG	3.0
2	A	206	GLY	3.0
1	B	20[A]	PRO	2.9
1	B	14[A]	GLN	2.9
1	B	205	ALA	2.9
1	B	128	GLY	2.8
2	A	221	LYS	2.8
1	B	15	ARG	2.8
1	B	198	ASN	2.8
1	B	199	PRO	2.6
1	B	9	GLU	2.6
1	B	25	ALA	2.6
1	B	131[A]	LEU	2.6
1	B	24	ALA	2.6
1	B	8	LEU	2.5
1	B	21	GLN	2.4
1	B	11	LEU	2.4
1	B	13	MET	2.4
1	B	83	ARG	2.3
1	B	206	THR	2.2
2	A	208	ALA	2.2
2	A	210	PHE	2.1

## 6.2 Non-standard residues in protein, DNA, RNA chains [i](#)

There are no non-standard protein/DNA/RNA residues in this entry.

## 6.3 Carbohydrates [i](#)

There are no carbohydrates in this entry.

## 6.4 Ligands [i](#)

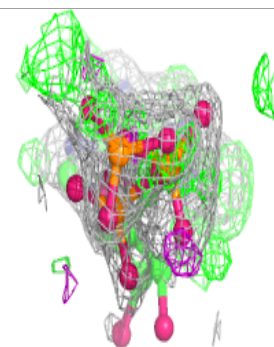
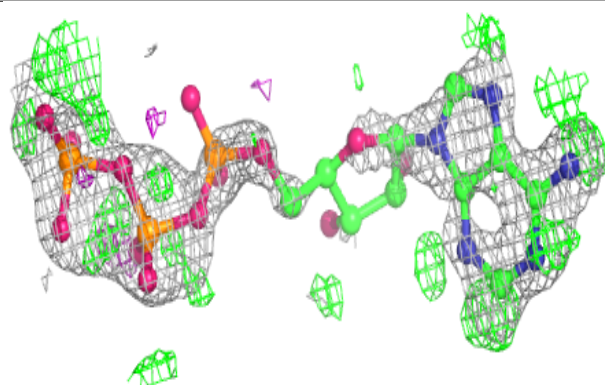
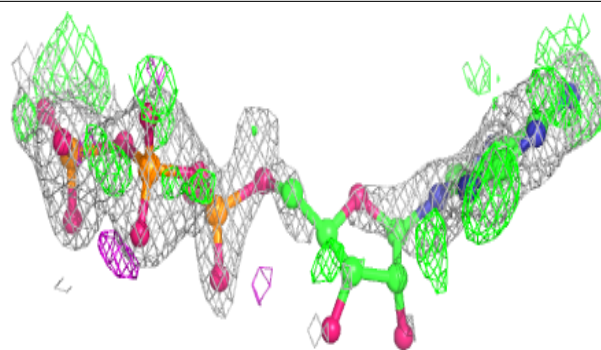
In the following table, the Atoms column lists the number of modelled atoms in the group and the number defined in the chemical component dictionary. The B-factors column lists the minimum, median, 95<sup>th</sup> percentile and maximum values of B factors of atoms in the group. The column labelled 'Q< 0.9' lists the number of atoms with occupancy less than 0.9.

Mol	Type	Chain	Res	Atoms	RSCC	RSR	B-factors( $\text{\AA}^2$ )	Q<0.9
5	MO	B	317	1/1	0.80	0.64	24,24,24,24	1
5	MO	B	312	1/1	0.88	0.47	30,30,30,30	1
5	MO	B	306	1/1	0.90	0.30	26,26,26,26	1
5	MO	B	318	1/1	0.90	0.64	16,16,16,16	1
5	MO	B	307	1/1	0.91	0.32	41,41,41,41	1
5	MO	B	310	1/1	0.92	0.34	31,31,31,31	1
5	MO	B	313	1/1	0.92	0.54	15,15,15,15	1
3	ATP	B	301	31/31	0.93	0.15	23,34,52,54	29
5	MO	A	306	1/1	0.94	0.30	23,23,23,23	1
5	MO	B	304	1/1	0.94	0.27	25,25,25,25	1
5	MO	A	305	1/1	0.95	0.35	18,18,18,18	1
5	MO	B	308	1/1	0.95	0.36	45,45,45,45	1
5	MO	B	315	1/1	0.96	0.26	19,19,19,19	1
5	MO	B	303	1/1	0.96	0.25	26,26,26,26	1
5	MO	B	309	1/1	0.96	0.23	20,20,20,20	1
6	PO4	B	319	5/5	0.96	0.21	43,43,48,48	0
5	MO	B	316	1/1	0.97	0.38	17,17,17,17	1
5	MO	B	311	1/1	0.98	0.42	25,25,25,25	1
3	ATP	A	301	31/31	0.98	0.09	18,24,30,35	0
5	MO	B	314	1/1	0.98	0.65	33,33,33,33	1
5	MO	B	305	1/1	0.98	0.23	28,28,28,28	1
7	MG	A	302	1/1	0.99	0.27	23,23,23,23	0
5	MO	A	308	1/1	0.99	0.29	17,17,17,17	1
4	8M0	B	302	36/36	0.99	0.14	11,16,20,23	36
4	8M0	A	303	34/36	0.99	0.14	14,16,20,22	34
5	MO	A	309	1/1	0.99	0.46	14,14,14,14	1
5	MO	A	307	1/1	0.99	0.27	16,16,16,16	1
8	M10	A	304	6/16	1.00	0.11	13,15,18,54	3

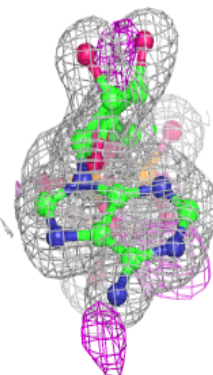
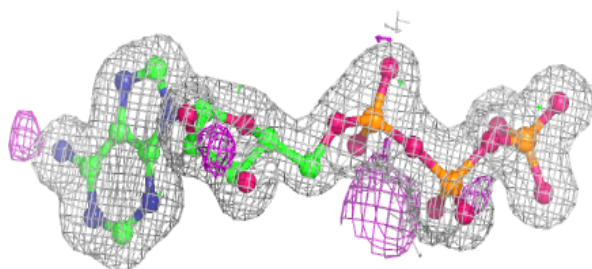
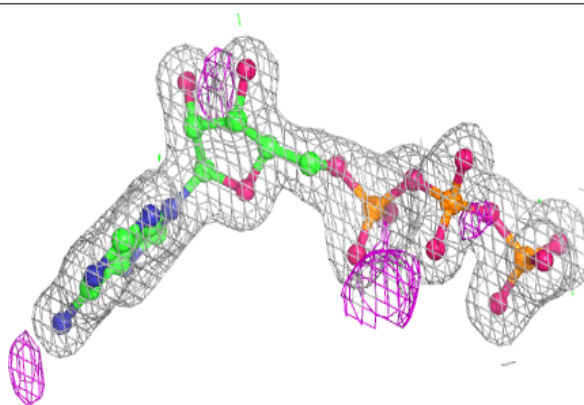
The following is a graphical depiction of the model fit to experimental electron density of all instances of the Ligand of Interest. In addition, ligands with molecular weight > 250 and outliers as shown on the geometry validation Tables will also be included. Each fit is shown from different orientation to approximate a three-dimensional view.

**Electron density around ATP B 301:**

$2mF_o-DF_c$  (at 0.7 rmsd) in gray  
 $mF_o-DF_c$  (at 3 rmsd) in purple (negative)  
and green (positive)

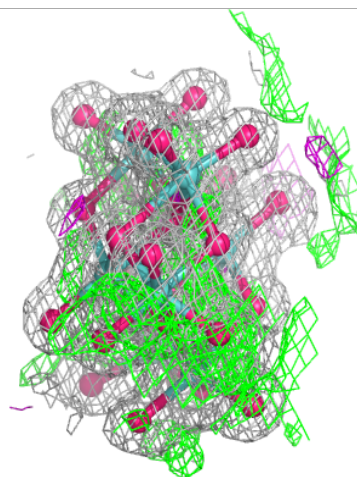
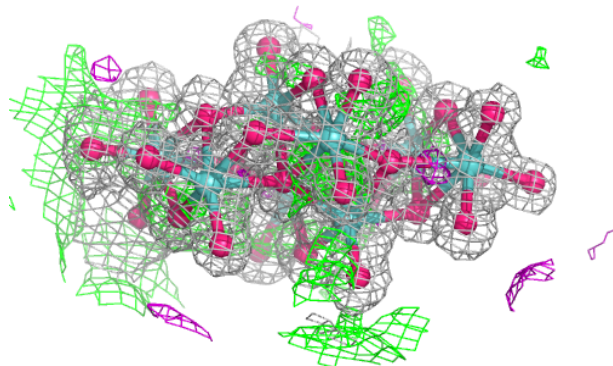
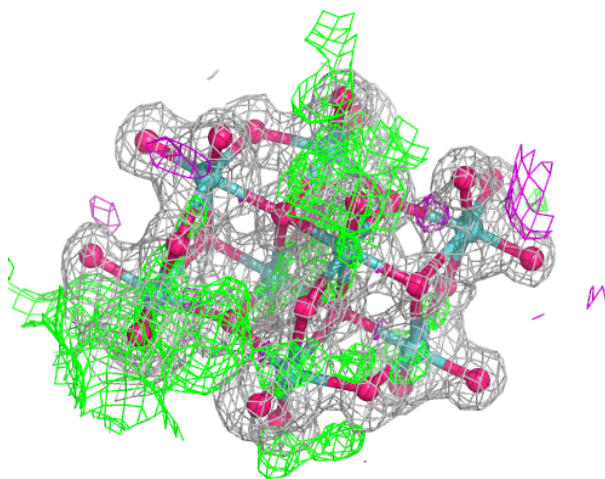
**Electron density around ATP A 301:**

$2mF_o-DF_c$  (at 0.7 rmsd) in gray  
 $mF_o-DF_c$  (at 3 rmsd) in purple (negative)  
and green (positive)



**Electron density around 8M0 B 302:**

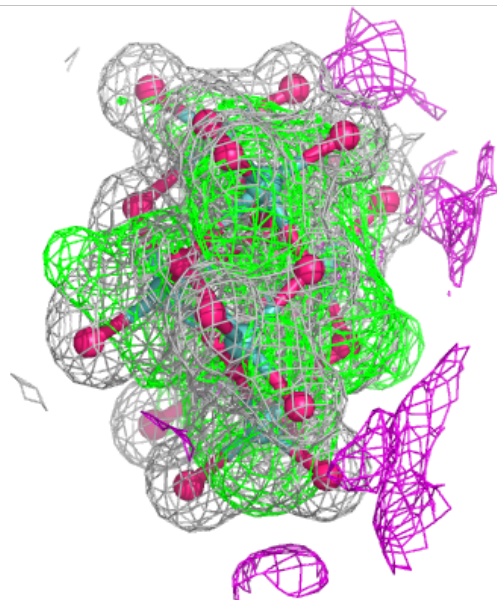
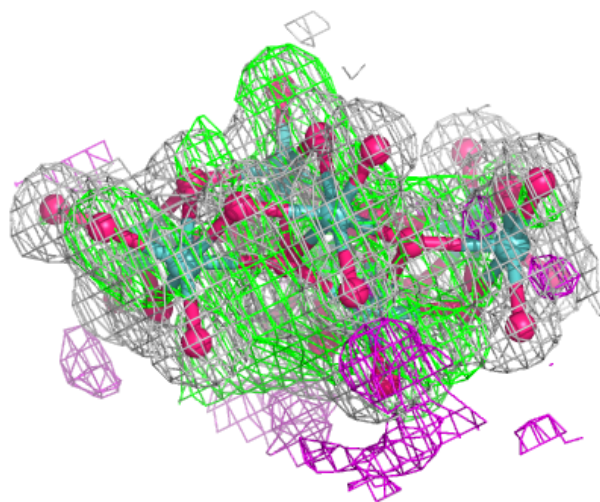
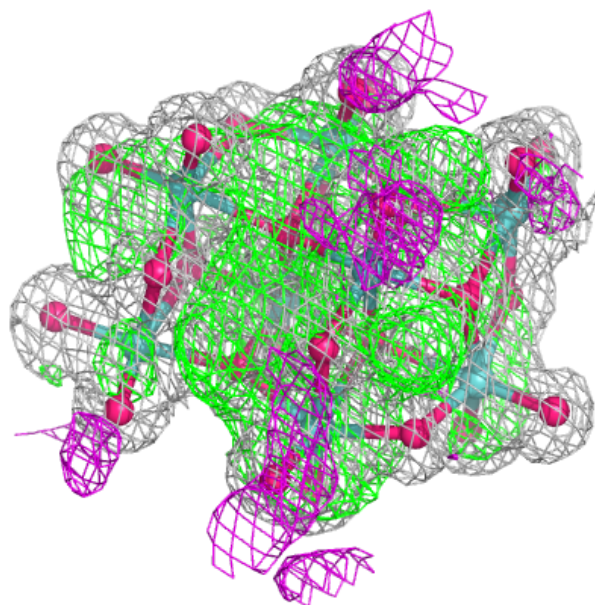
$2mF_o-DF_c$  (at 0.7 rmsd) in gray  
 $mF_o-DF_c$  (at 3 rmsd) in purple (negative)  
and green (positive)





**Electron density around 8M0 A 303:**

$2mF_o-DF_c$  (at 0.7 rmsd) in gray  
 $mF_o-DF_c$  (at 3 rmsd) in purple (negative)  
and green (positive)



## 6.5 Other polymers ⓘ

There are no such residues in this entry.