



Full wwPDB X-ray Structure Validation Report ⓘ

May 14, 2020 – 12:08 pm BST

PDB ID : 4NDQ
Title : Crystal structure Molybdenum Storage Protein with fully Mo-loaded cavity
Authors : Poppe, J.; Warkentin, E.; Demmer, U.; Ermler, U.
Deposited on : 2013-10-27
Resolution : 1.75 Å(reported)

This is a Full wwPDB X-ray Structure Validation Report for a publicly released PDB entry.

We welcome your comments at validation@mail.wwpdb.org

A user guide is available at

<https://www.wwpdb.org/validation/2017/XrayValidationReportHelp>

with specific help available everywhere you see the ⓘ symbol.

The following versions of software and data (see [references ⓘ](#)) were used in the production of this report:

MolProbity : 4.02b-467
Mogul : 1.8.5 (274361), CSD as541be (2020)
Xtriage (Phenix) : 1.13
EDS : 2.11
buster-report : 1.1.7 (2018)
Percentile statistics : 20191225.v01 (using entries in the PDB archive December 25th 2019)
Refmac : 5.8.0158
CCP4 : 7.0.044 (Gargrove)
Ideal geometry (proteins) : Engh & Huber (2001)
Ideal geometry (DNA, RNA) : Parkinson et al. (1996)
Validation Pipeline (wwPDB-VP) : 2.11

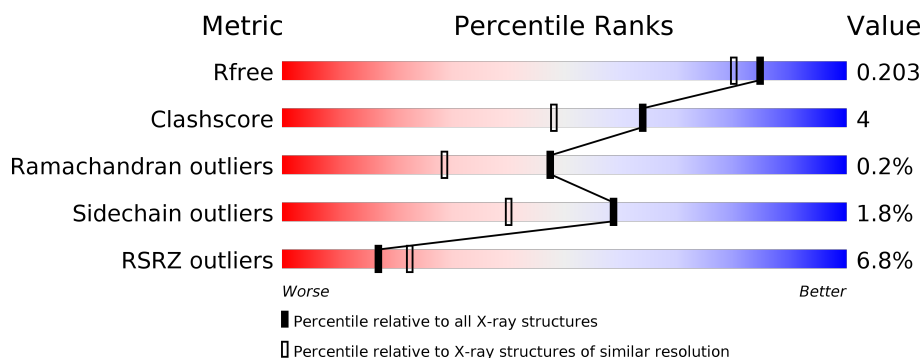
1 Overall quality at a glance ⓘ

The following experimental techniques were used to determine the structure:

X-RAY DIFFRACTION

The reported resolution of this entry is 1.75 Å.

Percentile scores (ranging between 0-100) for global validation metrics of the entry are shown in the following graphic. The table shows the number of entries on which the scores are based.



Metric	Whole archive (#Entries)	Similar resolution (#Entries, resolution range(Å))
R_{free}	130704	2340 (1.76-1.76)
Clashscore	141614	2466 (1.76-1.76)
Ramachandran outliers	138981	2437 (1.76-1.76)
Sidechain outliers	138945	2437 (1.76-1.76)
RSRZ outliers	127900	2298 (1.76-1.76)

The table below summarises the geometric issues observed across the polymeric chains and their fit to the electron density. The red, orange, yellow and green segments on the lower bar indicate the fraction of residues that contain outliers for ≥ 3 , 2, 1 and 0 types of geometric quality criteria respectively. A grey segment represents the fraction of residues that are not modelled. The numeric value for each fraction is indicated below the corresponding segment, with a dot representing fractions $\leq 5\%$. The upper red bar (where present) indicates the fraction of residues that have poor fit to the electron density. The numeric value is given above the bar.

Mol	Chain	Length	Quality of chain
1	B	270	<div> <div>8%</div> <div> <div></div> <div>90%</div> <div>8% ..</div> </div> </div>
2	A	276	<div> <div>5%</div> <div> <div></div> <div>83%</div> <div>5% • 11%</div> </div> </div>

The following table lists non-polymeric compounds, carbohydrate monomers and non-standard residues in protein, DNA, RNA chains that are outliers for geometric or electron-density-fit criteria:

Mol	Type	Chain	Res	Chirality	Geometry	Clashes	Electron density
4	8M0	B	302	-	-	X	-

2 Entry composition [i](#)

There are 8 unique types of molecules in this entry. The entry contains 4365 atoms, of which 0 are hydrogens and 0 are deuteriums.

In the tables below, the ZeroOcc column contains the number of atoms modelled with zero occupancy, the AltConf column contains the number of residues with at least one atom in alternate conformation and the Trace column contains the number of residues modelled with at most 2 atoms.

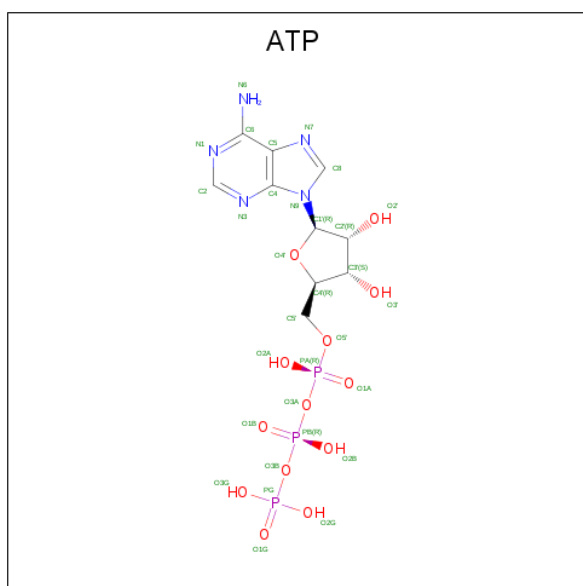
- Molecule 1 is a protein called Molybdenum storage protein subunit beta.

Mol	Chain	Residues	Atoms					ZeroOcc	AltConf	Trace
1	B	268	Total	C	N	O	S	0	9	0
			2024	1286	355	374	9			

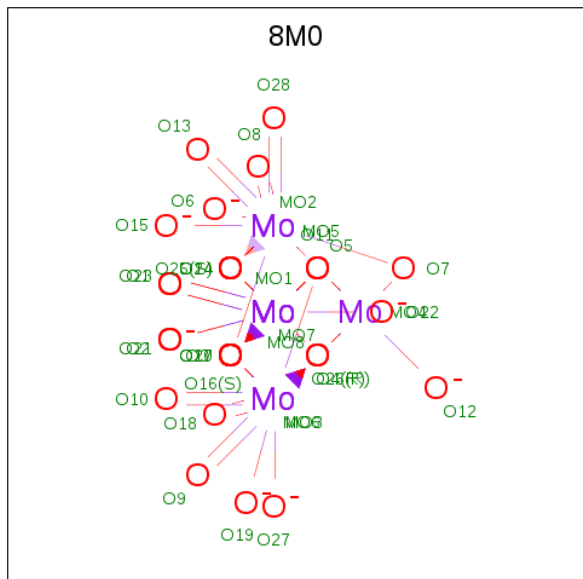
- Molecule 2 is a protein called Molybdenum storage protein subunit alpha.

Mol	Chain	Residues	Atoms					ZeroOcc	AltConf	Trace
2	A	245	Total	C	N	O	S	0	8	0
			1877	1190	351	333	3			

- Molecule 3 is ADENOSINE-5'-TRIPHOSPHATE (three-letter code: ATP) (formula: $C_{10}H_{16}N_5O_{13}P_3$).



- Molecule 4 is bis(mu4-oxo)-tetrakis(mu3-oxo)-hexakis(mu2-oxo)-hexadeca-oxo-octamolybdenum (VI) (three-letter code: 8M0) (formula: Mo_8O_{28}).



Mol	Chain	Residues	Atoms			ZeroOcc	AltConf
4	B	1	Total	Mo	O	0	0
			36	8	28		
4	A	1	Total	Mo	O	0	0
			34	8	26		

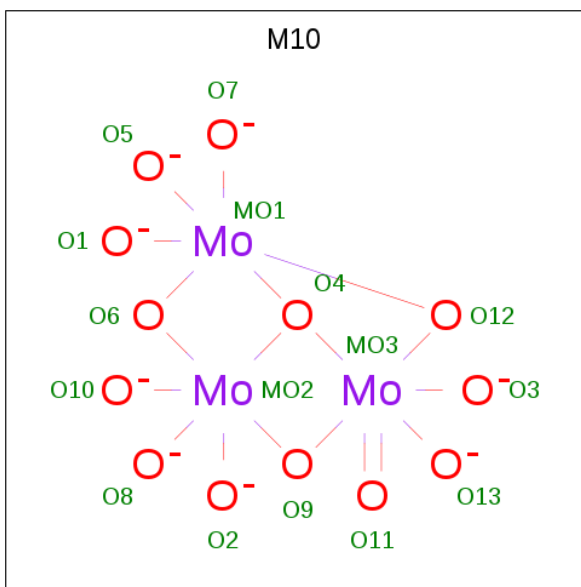
- Molecule 5 is MOLYBDENUM ATOM (three-letter code: MO) (formula: Mo).

Mol	Chain	Residues	Atoms		ZeroOcc	AltConf
5	B	3	Total	Mo	0	0
			3	3		
5	A	3	Total	Mo	0	0
			3	3		

- Molecule 6 is MAGNESIUM ION (three-letter code: MG) (formula: Mg).

Mol	Chain	Residues	Atoms		ZeroOcc	AltConf
6	A	1	Total	Mg	0	0
			1	1		

- Molecule 7 is (mu3-oxo)-tris(mu2-oxo)-nonakisoxo-trimolybdenum (VI) (three-letter code: M10) (formula: Mo_3O_{13}).



Mol	Chain	Residues	Atoms			ZeroOcc	AltConf
7	A	1	Total	Mo	O	0	0
			6	2	4		

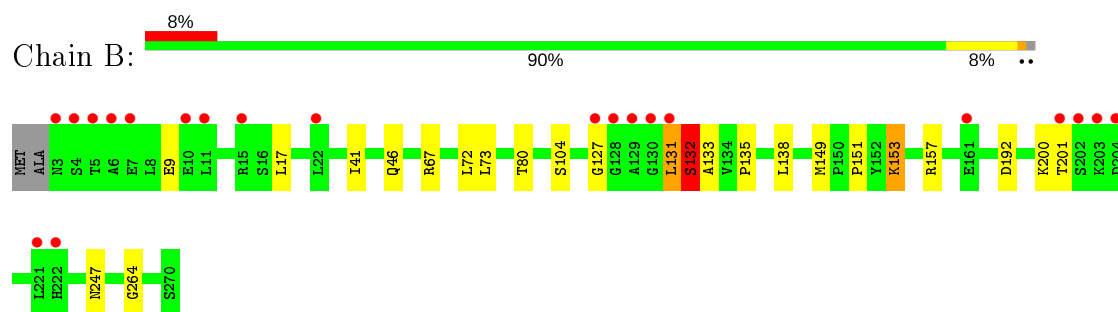
- Molecule 8 is water.

Mol	Chain	Residues	Atoms		ZeroOcc	AltConf
8	B	156	Total	O	0	0
			156	156		
8	A	163	Total	O	0	0
			163	163		

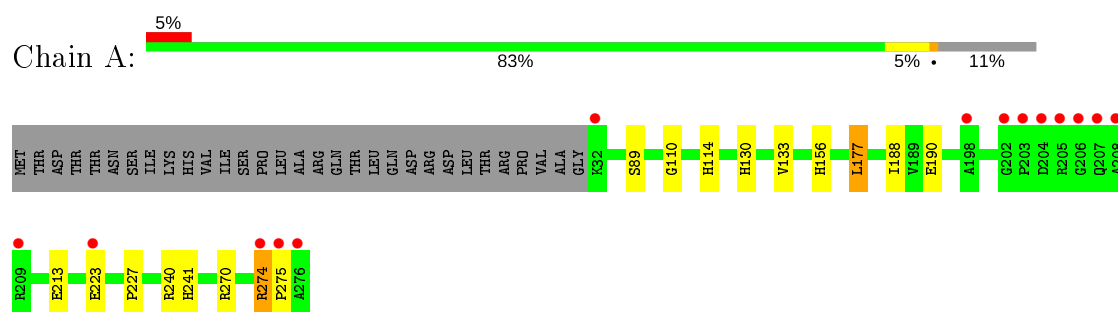
3 Residue-property plots [i](#)

These plots are drawn for all protein, RNA and DNA chains in the entry. The first graphic for a chain summarises the proportions of the various outlier classes displayed in the second graphic. The second graphic shows the sequence view annotated by issues in geometry and electron density. Residues are color-coded according to the number of geometric quality criteria for which they contain at least one outlier: green = 0, yellow = 1, orange = 2 and red = 3 or more. A red dot above a residue indicates a poor fit to the electron density ($RSRZ > 2$). Stretches of 2 or more consecutive residues without any outlier are shown as a green connector. Residues present in the sample, but not in the model, are shown in grey.

- Molecule 1: Molybdenum storage protein subunit beta



- Molecule 2: Molybdenum storage protein subunit alpha



4 Data and refinement statistics

Property	Value	Source
Space group	P 63 2 2	Depositor
Cell constants a, b, c, α , β , γ	115.15Å 115.15Å 234.50Å 90.00° 90.00° 120.00°	Depositor
Resolution (Å)	10.00 – 1.75 48.77 – 1.75	Depositor EDS
% Data completeness (in resolution range)	98.4 (10.00-1.75) 98.4 (48.77-1.75)	Depositor EDS
R_{merge}	0.06	Depositor
R_{sym}	(Not available)	Depositor
$\langle I/\sigma(I) \rangle$ ¹	5.29 (at 1.75Å)	Xtriage
Refinement program	PHENIX (phenix.refine: 1.8.1_1168), REFMAC	Depositor
R, R_{free}	0.179 , 0.205 0.175 , 0.203	Depositor DCC
R_{free} test set	4557 reflections (4.99%)	wwPDB-VP
Wilson B-factor (Å ²)	24.8	Xtriage
Anisotropy	0.101	Xtriage
Bulk solvent k_{sol} (e/Å ³), B_{sol} (Å ²)	0.38 , 59.4	EDS
L-test for twinning ²	$\langle L \rangle = 0.48$, $\langle L^2 \rangle = 0.31$	Xtriage
Estimated twinning fraction	No twinning to report.	Xtriage
F_o, F_c correlation	0.97	EDS
Total number of atoms	4365	wwPDB-VP
Average B, all atoms (Å ²)	33.0	wwPDB-VP

Xtriage's analysis on translational NCS is as follows: *The largest off-origin peak in the Patterson function is 4.52% of the height of the origin peak. No significant pseudotranslation is detected.*

¹Intensities estimated from amplitudes.

²Theoretical values of $\langle |L| \rangle$, $\langle L^2 \rangle$ for acentric reflections are 0.5, 0.333 respectively for untwinned datasets, and 0.375, 0.2 for perfectly twinned datasets.

5 Model quality [i](#)

5.1 Standard geometry [i](#)

Bond lengths and bond angles in the following residue types are not validated in this section: M10, MG, 8M0, MO, ATP

The Z score for a bond length (or angle) is the number of standard deviations the observed value is removed from the expected value. A bond length (or angle) with $|Z| > 5$ is considered an outlier worth inspection. RMSZ is the root-mean-square of all Z scores of the bond lengths (or angles).

Mol	Chain	Bond lengths		Bond angles	
		RMSZ	$\# Z > 5$	RMSZ	$\# Z > 5$
1	B	0.78	0/2088	0.78	1/2835 (0.0%)
2	A	0.83	0/1941	0.80	1/2642 (0.0%)
All	All	0.80	0/4029	0.79	2/5477 (0.0%)

Chiral center outliers are detected by calculating the chiral volume of a chiral center and verifying if the center is modelled as a planar moiety or with the opposite hand. A planarity outlier is detected by checking planarity of atoms in a peptide group, atoms in a mainchain group or atoms of a sidechain that are expected to be planar.

Mol	Chain	#Chirality outliers	#Planarity outliers
1	B	0	1

There are no bond length outliers.

All (2) bond angle outliers are listed below:

Mol	Chain	Res	Type	Atoms	Z	Observed($^{\circ}$)	Ideal($^{\circ}$)
1	B	157	ARG	NE-CZ-NH1	-5.61	117.50	120.30
2	A	240	ARG	NE-CZ-NH1	5.19	122.89	120.30

There are no chirality outliers.

All (1) planarity outliers are listed below:

Mol	Chain	Res	Type	Group
1	B	132	SER	Peptide

5.2 Too-close contacts [i](#)

In the following table, the Non-H and H(model) columns list the number of non-hydrogen atoms and hydrogen atoms in the chain respectively. The H(added) column lists the number of hydrogen

atoms added and optimized by MolProbity. The Clashes column lists the number of clashes within the asymmetric unit, whereas Symm-Clashes lists symmetry related clashes.

Mol	Chain	Non-H	H(model)	H(added)	Clashes	Symm-Clashes
1	B	2024	0	2103	21	0
2	A	1877	0	1946	13	0
3	A	31	0	12	1	0
3	B	31	0	12	1	0
4	A	34	0	0	3	0
4	B	36	0	0	8	0
5	A	3	0	0	0	0
5	B	3	0	0	0	0
6	A	1	0	0	0	0
7	A	6	0	0	0	0
8	A	163	0	0	2	1
8	B	156	0	0	3	0
All	All	4365	0	4073	34	1

The all-atom clashscore is defined as the number of clashes found per 1000 atoms (including hydrogen atoms). The all-atom clashscore for this structure is 4.

All (34) close contacts within the same asymmetric unit are listed below, sorted by their clash magnitude.

Atom-1	Atom-2	Interatomic distance (Å)	Clash overlap (Å)
4:B:302:8M0:O28	4:B:302:8M0:O23	1.92	0.88
1:B:127:GLY:O	4:B:302:8M0:O18	2.01	0.78
2:A:130:HIS:N	4:A:303:8M0:O12	2.17	0.76
1:B:73[A]:LEU:HD21	1:B:138:LEU:HD11	1.73	0.69
1:B:200:LYS:NZ	3:B:301:ATP:O3'	2.27	0.68
1:B:132:SER:HA	1:B:135:PRO:HD2	1.83	0.59
1:B:153:LYS:H	1:B:153:LYS:NZ	2.01	0.58
2:A:241:HIS:HD2	8:A:495:HOH:O	1.86	0.57
1:B:151:PRO:HB3	4:B:302:8M0:O4	2.05	0.56
1:B:131:LEU:HB2	4:B:302:8M0:O22	2.05	0.55
2:A:213:GLU:HG2	2:A:270:ARG:NH1	2.23	0.54
4:B:302:8M0:O24	2:A:156:HIS:ND1	2.26	0.53
1:B:131:LEU:HD13	4:B:302:8M0:O28	2.10	0.52
2:A:130:HIS:HB2	4:A:303:8M0:O21	2.11	0.50
1:B:104[A]:SER:HA	1:B:149[A]:MET:HG3	1.93	0.50
1:B:80[B]:THR:HG23	8:B:553:HOH:O	2.12	0.50
1:B:192:ASP:O	1:B:264:GLY:HA2	2.13	0.48
1:B:153:LYS:HZ3	1:B:153:LYS:H	1.61	0.48
1:B:133:ALA:HA	8:B:441:HOH:O	2.14	0.47

Continued on next page...

Continued from previous page...

Atom-1	Atom-2	Interatomic distance (Å)	Clash overlap (Å)
1:B:127:GLY:HA3	4:B:302:8M0:O17	2.15	0.46
2:A:114:HIS:HE1	8:A:487:HOH:O	1.97	0.46
2:A:133:VAL:HG11	2:A:177:LEU:HD11	1.98	0.46
2:A:156:HIS:HE1	4:A:303:8M0:O23	1.98	0.46
2:A:227:PRO:HD3	3:A:301:ATP:C6	2.52	0.44
2:A:110:GLY:O	2:A:114:HIS:HD2	2.01	0.43
1:B:46:GLN:HG3	8:B:553:HOH:O	2.18	0.43
1:B:132:SER:CA	1:B:135:PRO:HD2	2.49	0.43
2:A:188:ILE:HG22	2:A:190[B]:GLU:HG2	2.01	0.42
1:B:17:LEU:HD23	1:B:17:LEU:HA	1.91	0.42
1:B:9:GLU:HG3	2:A:89[A]:SER:OG	2.20	0.42
1:B:131:LEU:HD13	4:B:302:8M0:O16	2.21	0.41
1:B:41:ILE:HD11	1:B:72:LEU:HD22	2.02	0.40
2:A:274:ARG:HA	2:A:275:PRO:HD3	1.96	0.40
1:B:192:ASP:HA	1:B:247:ASN:HB2	2.04	0.40

All (1) symmetry-related close contacts are listed below. The label for Atom-2 includes the symmetry operator and encoded unit-cell translations to be applied.

Atom-1	Atom-2	Interatomic distance (Å)	Clash overlap (Å)
8:A:521:HOH:O	8:A:521:HOH:O 10_665	2.16	0.04

5.3 Torsion angles [i](#)

5.3.1 Protein backbone [i](#)

In the following table, the Percentiles column shows the percent Ramachandran outliers of the chain as a percentile score with respect to all X-ray entries followed by that with respect to entries of similar resolution.

The Analysed column shows the number of residues for which the backbone conformation was analysed, and the total number of residues.

Mol	Chain	Analysed	Favoured	Allowed	Outliers	Percentiles
1	B	275/270 (102%)	265 (96%)	9 (3%)	1 (0%)	34 17
2	A	251/276 (91%)	246 (98%)	5 (2%)	0	100 100
All	All	526/546 (96%)	511 (97%)	14 (3%)	1 (0%)	47 29

All (1) Ramachandran outliers are listed below:

Mol	Chain	Res	Type
1	B	131	LEU

5.3.2 Protein sidechains ⓘ

In the following table, the Percentiles column shows the percent sidechain outliers of the chain as a percentile score with respect to all X-ray entries followed by that with respect to entries of similar resolution.

The Analysed column shows the number of residues for which the sidechain conformation was analysed, and the total number of residues.

Mol	Chain	Analysed	Rotameric	Outliers	Percentiles	
1	B	214/206 (104%)	210 (98%)	4 (2%)	57	37
2	A	196/216 (91%)	193 (98%)	3 (2%)	65	49
All	All	410/422 (97%)	403 (98%)	7 (2%)	59	42

All (7) residues with a non-rotameric sidechain are listed below:

Mol	Chain	Res	Type
1	B	67	ARG
1	B	132	SER
1	B	153	LYS
1	B	201	THR
2	A	177	LEU
2	A	223	GLU
2	A	274	ARG

Some sidechains can be flipped to improve hydrogen bonding and reduce clashes. There are no such sidechains identified.

5.3.3 RNA ⓘ

There are no RNA molecules in this entry.

5.4 Non-standard residues in protein, DNA, RNA chains ⓘ

There are no non-standard protein/DNA/RNA residues in this entry.

5.5 Carbohydrates [i](#)

There are no carbohydrates in this entry.

5.6 Ligand geometry [i](#)

Of 12 ligands modelled in this entry, 7 are monoatomic - leaving 5 for Mogul analysis.

In the following table, the Counts columns list the number of bonds (or angles) for which Mogul statistics could be retrieved, the number of bonds (or angles) that are observed in the model and the number of bonds (or angles) that are defined in the Chemical Component Dictionary. The Link column lists molecule types, if any, to which the group is linked. The Z score for a bond length (or angle) is the number of standard deviations the observed value is removed from the expected value. A bond length (or angle) with $|Z| > 2$ is considered an outlier worth inspection. RMSZ is the root-mean-square of all Z scores of the bond lengths (or angles).

Mol	Type	Chain	Res	Link	Bond lengths			Bond angles		
					Counts	RMSZ	# Z > 2	Counts	RMSZ	# Z > 2
7	M10	A	304	-	0,5,18	0.00	-	-		
3	ATP	B	301	-	26,33,33	1.20	3 (11%)	31,52,52	1.51	6 (19%)
4	8M0	B	302	-	22,48,48	20.89	14 (63%)	-		
3	ATP	A	301	6	26,33,33	1.19	2 (7%)	31,52,52	1.47	5 (16%)
4	8M0	A	303	-	17,46,48	12.21	11 (64%)	-		

In the following table, the Chirals column lists the number of chiral outliers, the number of chiral centers analysed, the number of these observed in the model and the number defined in the Chemical Component Dictionary. Similar counts are reported in the Torsion and Rings columns. '-' means no outliers of that kind were identified.

Mol	Type	Chain	Res	Link	Chirals	Torsions	Rings
3	ATP	B	301	-	-	4/18/38/38	0/3/3/3
3	ATP	A	301	6	-	2/18/38/38	0/3/3/3

All (30) bond length outliers are listed below:

Mol	Chain	Res	Type	Atoms	Z	Observed(Å)	Ideal(Å)
4	B	302	8M0	O28-MO5	79.59	2.71	1.71
4	A	303	8M0	O20-MO8	31.32	2.04	1.74
4	B	302	8M0	O20-MO8	31.16	2.04	1.74
4	B	302	8M0	O7-MO4	30.73	2.04	1.74
4	A	303	8M0	O7-MO4	29.25	2.02	1.74
4	B	302	8M0	O9-MO3	15.86	1.91	1.71
4	B	302	8M0	O10-MO3	15.67	1.90	1.71

Continued on next page...

Continued from previous page...

Mol	Chain	Res	Type	Atoms	Z	Observed(Å)	Ideal(Å)
4	B	302	8M0	O13-MO5	15.49	1.90	1.71
4	B	302	8M0	O1-MO1	13.41	1.92	1.68
4	B	302	8M0	O23-MO7	13.21	1.91	1.68
4	B	302	8M0	O18-MO6	12.29	1.90	1.68
4	A	303	8M0	O23-MO7	12.13	1.89	1.68
4	A	303	8M0	O1-MO1	11.81	1.89	1.68
4	A	303	8M0	O13-MO5	11.41	1.92	1.67
4	A	303	8M0	O18-MO6	10.88	1.87	1.68
4	A	303	8M0	O8-MO2	10.68	1.87	1.68
4	B	302	8M0	O8-MO2	7.06	1.80	1.68
4	B	302	8M0	O25-MO8	4.13	2.09	1.88
4	A	303	8M0	O14-MO5	4.02	2.04	1.89
4	B	302	8M0	O26-MO4	3.99	2.09	1.88
4	A	303	8M0	O3-MO3	3.86	2.02	1.87
3	B	301	ATP	C2-N3	3.07	1.37	1.32
4	A	303	8M0	O10-MO3	2.70	1.91	1.71
4	B	302	8M0	O16-MO8	2.61	2.02	1.88
3	A	301	ATP	C5-C4	2.61	1.47	1.40
3	B	301	ATP	C5-C4	2.37	1.47	1.40
4	A	303	8M0	O9-MO3	2.33	1.89	1.71
3	B	301	ATP	C2-N1	2.27	1.38	1.33
4	B	302	8M0	O4-MO4	2.18	1.99	1.88
3	A	301	ATP	C2-N3	2.14	1.35	1.32

All (11) bond angle outliers are listed below:

Mol	Chain	Res	Type	Atoms	Z	Observed(°)	Ideal(°)
3	B	301	ATP	N3-C2-N1	-3.87	122.62	128.68
3	A	301	ATP	N3-C2-N1	-2.89	124.16	128.68
3	A	301	ATP	O2A-PA-O1A	2.84	126.29	112.24
3	A	301	ATP	O5'-C5'-C4'	-2.41	100.69	108.99
3	B	301	ATP	PB-O3B-PG	-2.33	124.85	132.83
3	B	301	ATP	O2B-PB-O1B	2.32	123.72	112.24
3	A	301	ATP	O3G-PG-O2G	2.24	116.20	107.64
3	B	301	ATP	O3G-PG-O2G	2.23	116.17	107.64
3	B	301	ATP	C3'-C2'-C1'	2.22	104.32	100.98
3	B	301	ATP	N6-C6-N1	2.19	123.12	118.57
3	A	301	ATP	PA-O3A-PB	-2.01	125.92	132.83

There are no chirality outliers.

All (6) torsion outliers are listed below:

Mol	Chain	Res	Type	Atoms
3	A	301	ATP	C3'-C4'-C5'-O5'
3	B	301	ATP	PA-O3A-PB-O1B
3	A	301	ATP	O4'-C4'-C5'-O5'
3	B	301	ATP	C4'-C5'-O5'-PA
3	B	301	ATP	PB-O3A-PA-O1A
3	B	301	ATP	PB-O3A-PA-O2A

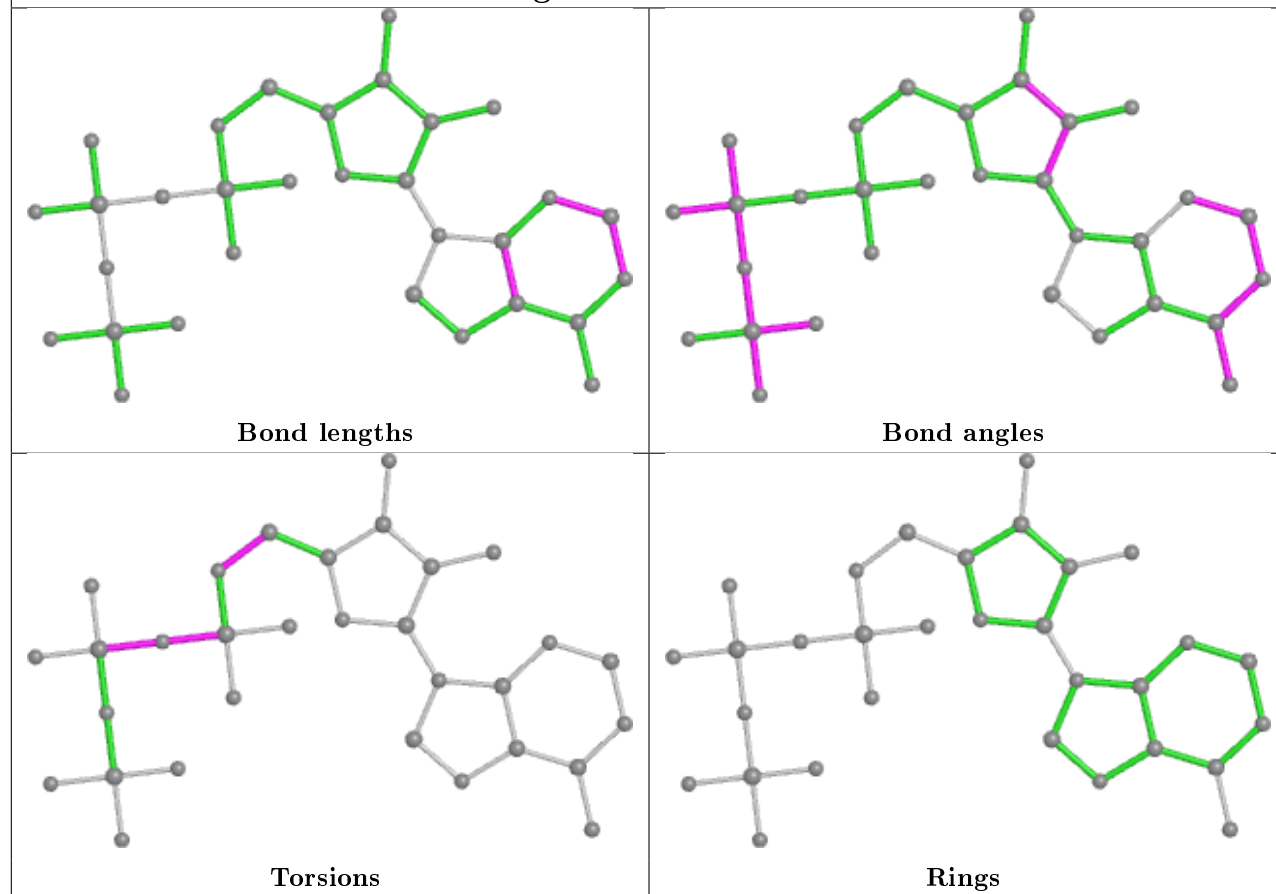
There are no ring outliers.

4 monomers are involved in 13 short contacts:

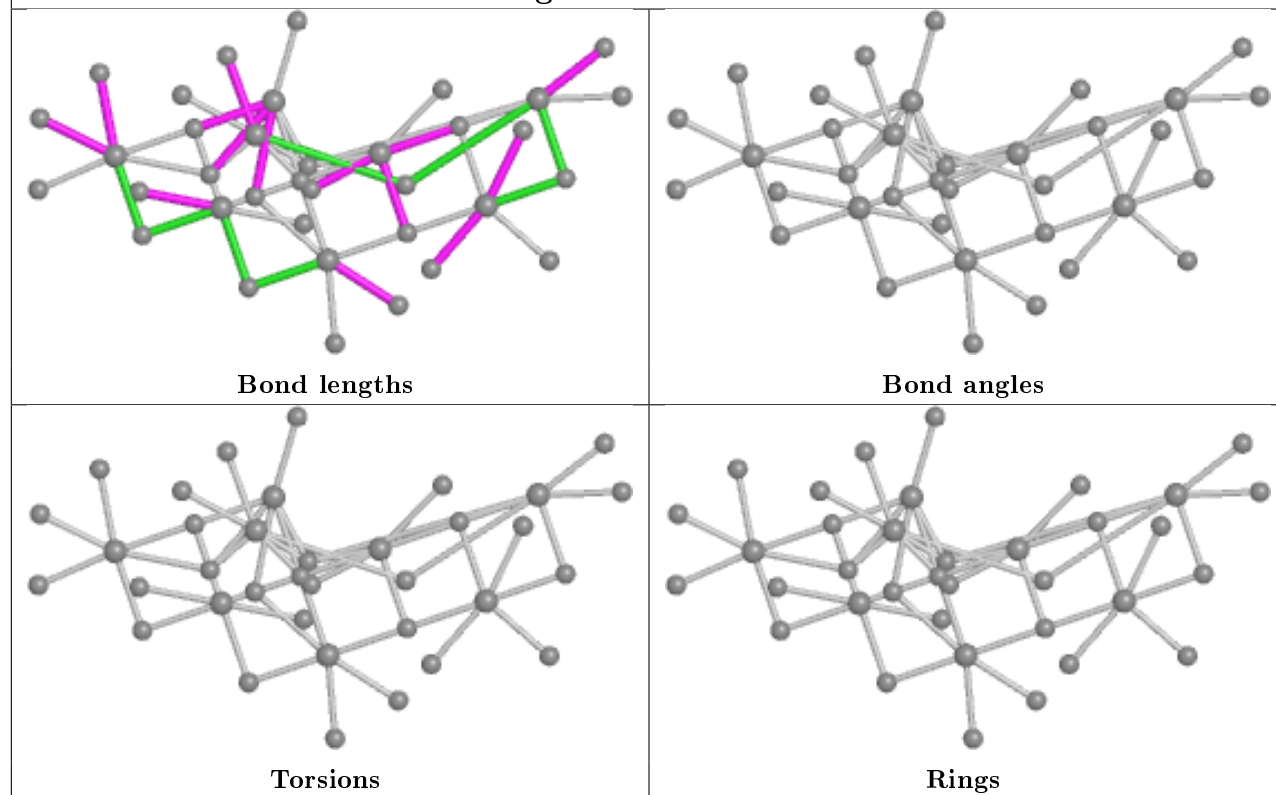
Mol	Chain	Res	Type	Clashes	Symm-Clashes
3	B	301	ATP	1	0
4	B	302	8M0	8	0
3	A	301	ATP	1	0
4	A	303	8M0	3	0

The following is a two-dimensional graphical depiction of Mogul quality analysis of bond lengths, bond angles, torsion angles, and ring geometry for all instances of the Ligand of Interest. In addition, ligands with molecular weight > 250 and outliers as shown on the validation Tables will also be included. For torsion angles, if less than 5% of the Mogul distribution of torsion angles is within 10 degrees of the torsion angle in question, then that torsion angle is considered an outlier. Any bond that is central to one or more torsion angles identified as an outlier by Mogul will be highlighted in the graph. For rings, the root-mean-square deviation (RMSD) between the ring in question and similar rings identified by Mogul is calculated over all ring torsion angles. If the average RMSD is greater than 60 degrees and the minimal RMSD between the ring in question and any Mogul-identified rings is also greater than 60 degrees, then that ring is considered an outlier. The outliers are highlighted in purple. The color gray indicates Mogul did not find sufficient equivalents in the CSD to analyse the geometry.

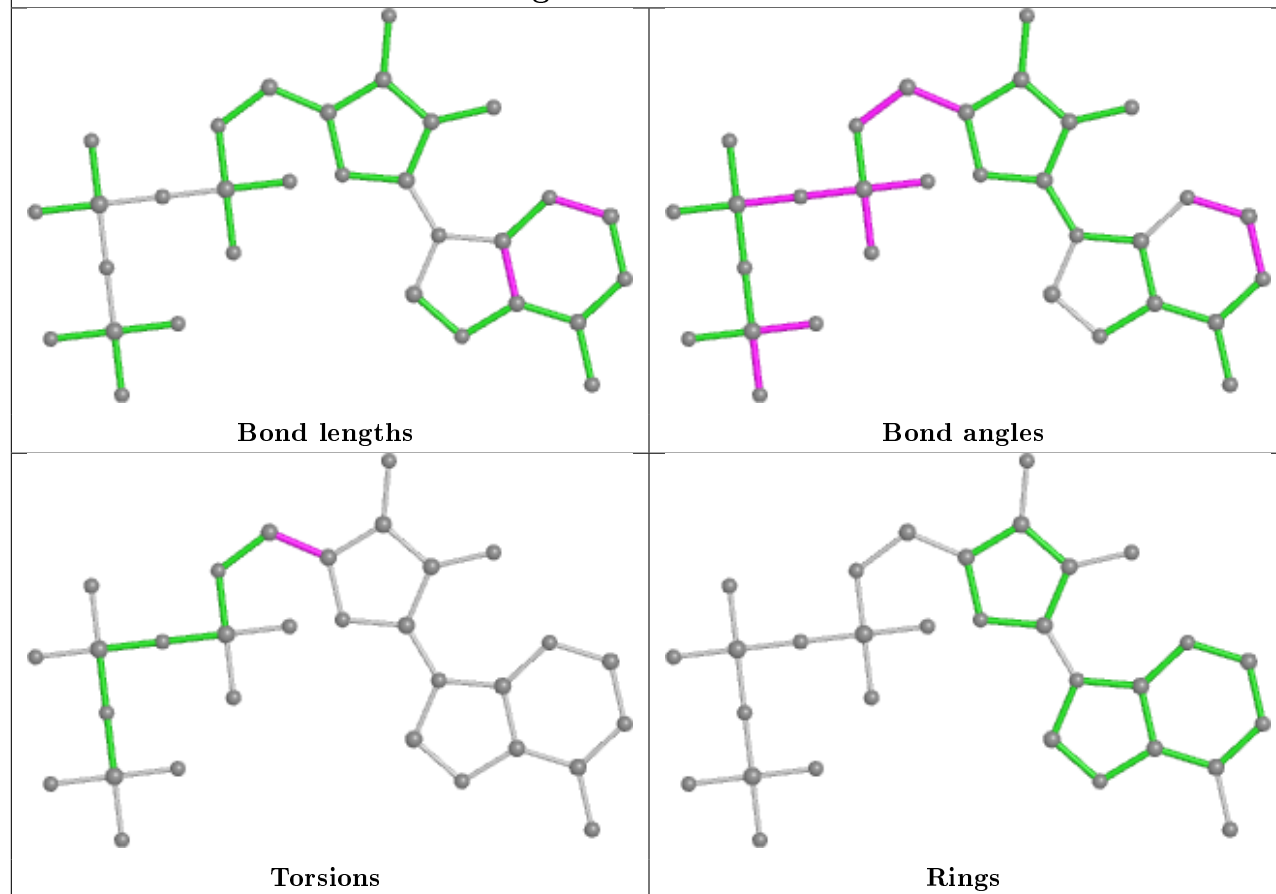
Ligand ATP B 301



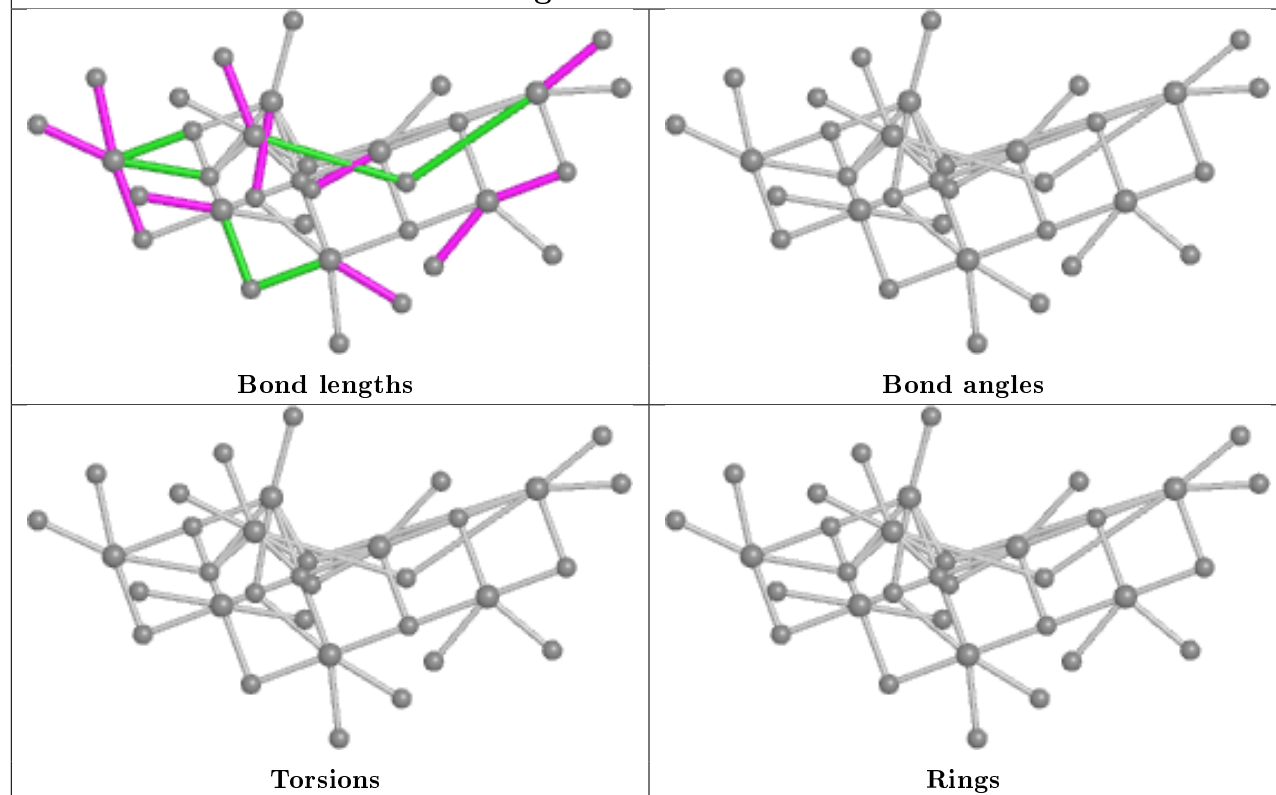
Ligand 8M0 B 302



Ligand ATP A 301



Ligand 8M0 A 303



5.7 Other polymers [i](#)

There are no such residues in this entry.

5.8 Polymer linkage issues [i](#)

There are no chain breaks in this entry.

6 Fit of model and data

6.1 Protein, DNA and RNA chains

In the following table, the column labelled ‘#RSRZ> 2’ contains the number (and percentage) of RSRZ outliers, followed by percent RSRZ outliers for the chain as percentile scores relative to all X-ray entries and entries of similar resolution. The OWAB column contains the minimum, median, 95th percentile and maximum values of the occupancy-weighted average B-factor per residue. The column labelled ‘Q< 0.9’ lists the number of (and percentage) of residues with an average occupancy less than 0.9.

Mol	Chain	Analysed	<RSRZ>	#RSRZ>2	OWAB(Å ²)	Q<0.9
1	B	268/270 (99%)	0.04	21 (7%) 13 17	21, 30, 71, 130	0
2	A	245/276 (88%)	-0.12	14 (5%) 23 29	17, 25, 56, 106	0
All	All	513/546 (93%)	-0.04	35 (6%) 17 22	17, 27, 68, 130	0

All (35) RSRZ outliers are listed below:

Mol	Chain	Res	Type	RSRZ
1	B	3	ASN	8.7
1	B	128	GLY	8.2
1	B	131	LEU	8.0
2	A	276	ALA	7.7
1	B	129	ALA	5.9
2	A	32	LYS	5.4
1	B	5	THR	5.4
1	B	203	LYS	5.2
1	B	4	SER	5.1
1	B	6	ALA	4.8
2	A	275	PRO	4.5
2	A	274	ARG	4.3
2	A	203	PRO	4.1
2	A	207	GLN	4.1
1	B	222	HIS	4.0
2	A	202	GLY	3.7
1	B	22	LEU	3.7
2	A	206	GLY	3.5
1	B	221	LEU	3.4
1	B	7	GLU	3.4
1	B	130	GLY	3.3
1	B	204	ASP	3.3
2	A	209[A]	ARG	3.2
1	B	11	LEU	3.2

Continued on next page...

Continued from previous page...

Mol	Chain	Res	Type	RSRZ
2	A	205	ARG	3.1
1	B	127	GLY	3.1
1	B	202	SER	3.0
2	A	223	GLU	2.9
2	A	204	ASP	2.8
1	B	201	THR	2.5
1	B	10	GLU	2.5
2	A	198	ALA	2.4
1	B	15	ARG	2.3
1	B	161	GLU	2.3
2	A	208	ALA	2.1

6.2 Non-standard residues in protein, DNA, RNA chains [i](#)

There are no non-standard protein/DNA/RNA residues in this entry.

6.3 Carbohydrates [i](#)

There are no carbohydrates in this entry.

6.4 Ligands [i](#)

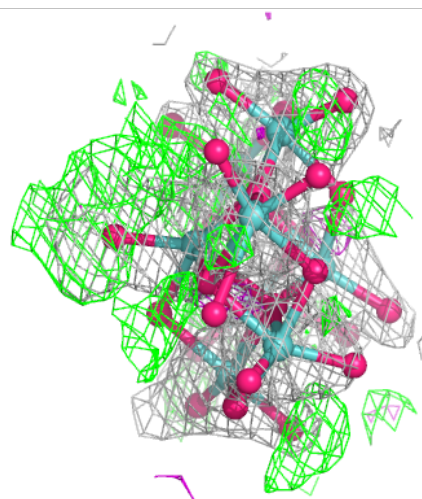
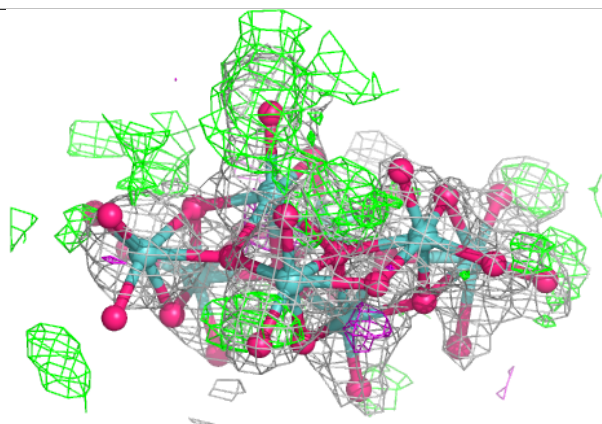
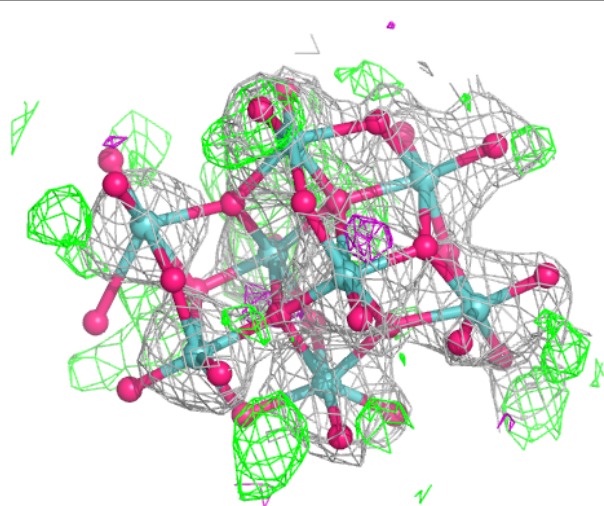
In the following table, the Atoms column lists the number of modelled atoms in the group and the number defined in the chemical component dictionary. The B-factors column lists the minimum, median, 95th percentile and maximum values of B factors of atoms in the group. The column labelled 'Q<0.9' lists the number of atoms with occupancy less than 0.9.

Mol	Type	Chain	Res	Atoms	RSCC	RSR	B-factors(Å ²)	Q<0.9
5	MO	B	305	1/1	0.87	0.20	70,70,70,70	1
5	MO	B	303	1/1	0.93	0.09	57,57,57,57	1
5	MO	A	305	1/1	0.94	0.26	67,67,67,67	1
4	8M0	B	302	36/36	0.96	0.23	11,29,45,77	36
3	ATP	B	301	31/31	0.97	0.08	26,32,45,65	27
5	MO	A	307	1/1	0.97	0.28	55,55,55,55	1
5	MO	A	306	1/1	0.97	0.23	52,52,52,52	1
3	ATP	A	301	31/31	0.98	0.08	22,30,38,43	0
5	MO	B	304	1/1	0.98	0.10	54,54,54,54	1
4	8M0	A	303	34/36	0.99	0.11	18,29,36,38	34
6	MG	A	302	1/1	0.99	0.13	39,39,39,39	0
7	M10	A	304	6/16	0.99	0.09	23,25,27,84	6

The following is a graphical depiction of the model fit to experimental electron density of all instances of the Ligand of Interest. In addition, ligands with molecular weight > 250 and outliers as shown on the geometry validation Tables will also be included. Each fit is shown from different orientation to approximate a three-dimensional view.

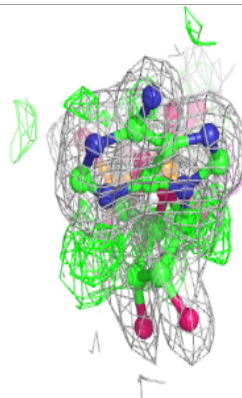
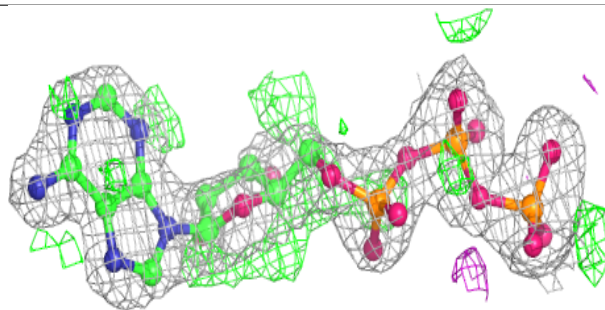
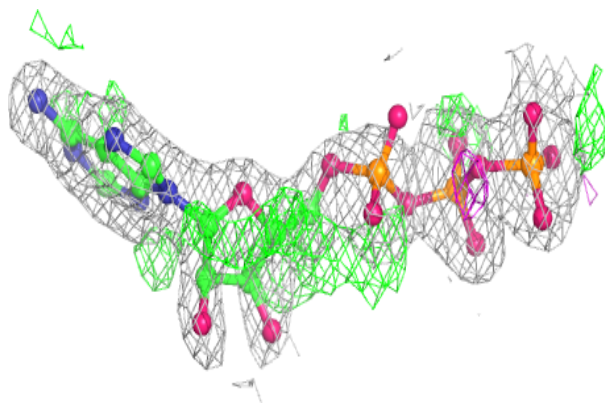
Electron density around 8M0 B 302:

$2mF_o-DF_c$ (at 0.7 rmsd) in gray
 mF_o-DF_c (at 3 rmsd) in purple (negative)
and green (positive)

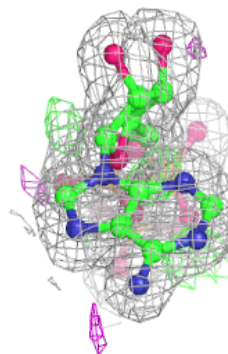
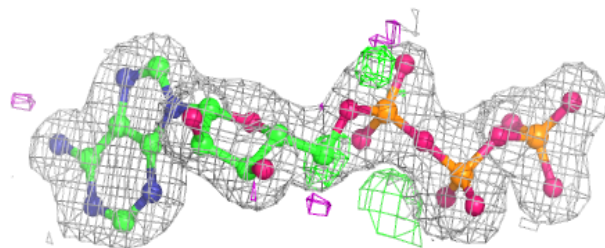
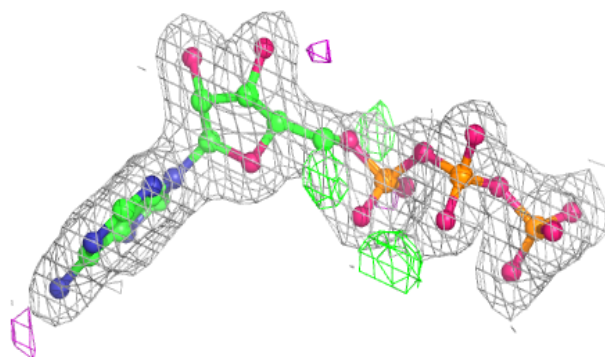


Electron density around ATP B 301:

$2mF_o-DF_c$ (at 0.7 rmsd) in gray
 mF_o-DF_c (at 3 rmsd) in purple (negative)
and green (positive)

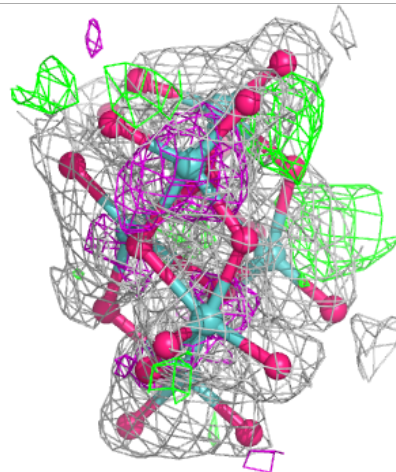
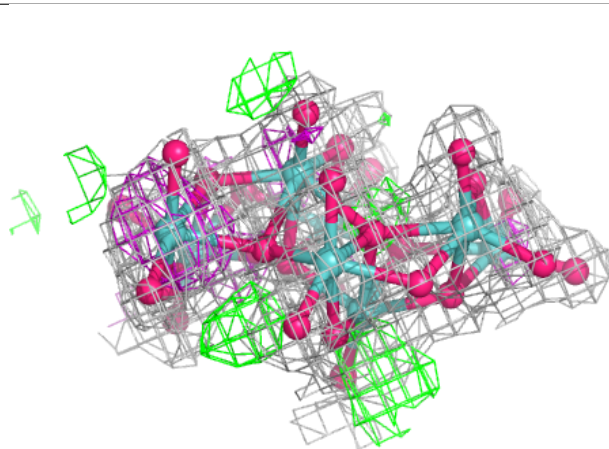
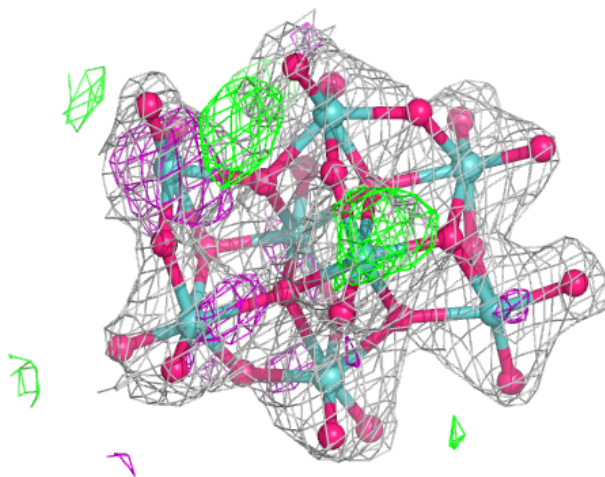
**Electron density around ATP A 301:**

$2mF_o-DF_c$ (at 0.7 rmsd) in gray
 mF_o-DF_c (at 3 rmsd) in purple (negative)
and green (positive)



Electron density around 8M0 A 303:

$2mF_o-DF_c$ (at 0.7 rmsd) in gray
 mF_o-DF_c (at 3 rmsd) in purple (negative)
and green (positive)



6.5 Other polymers [i](#)

There are no such residues in this entry.