



wwPDB X-ray Structure Validation Summary Report ⓘ

May 14, 2020 – 08:36 pm BST

PDB ID : 6NH1
Title : Structure of human endothelial nitric oxide synthase heme domain in complex with 6-(3-fluoro-5-(3-(methylamino)prop-1-yn-1-yl)phenethyl)-4-methylpyridine-2-amine
Authors : Chreifi, G.; Li, H.; Poulos, T.L.
Deposited on : 2018-12-21
Resolution : 2.22 Å(reported)

This is a wwPDB X-ray Structure Validation Summary Report for a publicly released PDB entry.

We welcome your comments at validation@mail.wwpdb.org

A user guide is available at

<https://www.wwpdb.org/validation/2017/XrayValidationReportHelp>

with specific help available everywhere you see the ⓘ symbol.

The following versions of software and data (see [references ⓘ](#)) were used in the production of this report:

MolProbity : 4.02b-467
Mogul : 1.8.5 (274361), CSD as541be (2020)
Xtriage (Phenix) : 1.13
EDS : 2.11
buster-report : 1.1.7 (2018)
Percentile statistics : 20191225.v01 (using entries in the PDB archive December 25th 2019)
Refmac : 5.8.0158
CCP4 : 7.0.044 (Gargrove)
Ideal geometry (proteins) : Engh & Huber (2001)
Ideal geometry (DNA, RNA) : Parkinson et al. (1996)
Validation Pipeline (wwPDB-VP) : 2.11

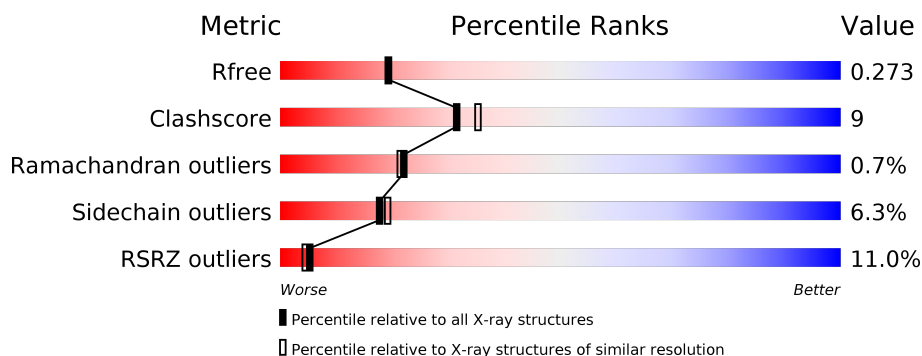
1 Overall quality at a glance

The following experimental techniques were used to determine the structure:

X-RAY DIFFRACTION

The reported resolution of this entry is 2.22 Å.

Percentile scores (ranging between 0-100) for global validation metrics of the entry are shown in the following graphic. The table shows the number of entries on which the scores are based.



Metric	Whole archive (#Entries)	Similar resolution (#Entries, resolution range(Å))
R_{free}	130704	5912 (2.24-2.20)
Clashscore	141614	6646 (2.24-2.20)
Ramachandran outliers	138981	6543 (2.24-2.20)
Sidechain outliers	138945	6544 (2.24-2.20)
RSRZ outliers	127900	5797 (2.24-2.20)

The table below summarises the geometric issues observed across the polymeric chains and their fit to the electron density. The red, orange, yellow and green segments on the lower bar indicate the fraction of residues that contain outliers for ≥ 3 , 2, 1 and 0 types of geometric quality criteria respectively. A grey segment represents the fraction of residues that are not modelled. The numeric value for each fraction is indicated below the corresponding segment, with a dot representing fractions $\leq 5\%$. The upper red bar (where present) indicates the fraction of residues that have poor fit to the electron density. The numeric value is given above the bar.

Mol	Chain	Length	Quality of chain
1	A	440	<div> <div>17%</div> <div> <div>66%</div> <div>22%</div> <div>•</div> <div>8%</div> </div> </div>
1	B	440	<div> <div>7%</div> <div> <div>77%</div> <div>15%</div> <div>8%</div> </div> </div>
1	C	440	<div> <div>12%</div> <div> <div>68%</div> <div>21%</div> <div>•</div> <div>9%</div> </div> </div>
1	D	440	<div> <div>5%</div> <div> <div>72%</div> <div>20%</div> <div>•</div> <div>8%</div> </div> </div>

The following table lists non-polymeric compounds, carbohydrate monomers and non-standard residues in protein, DNA, RNA chains that are outliers for geometric or electron-density-fit crite-

ria:

Mol	Type	Chain	Res	Chirality	Geometry	Clashes	Electron density
4	BTB	A	510	-	-	X	-
9	H4B	B	501	-	-	-	X

2 Entry composition [i](#)

There are 10 unique types of molecules in this entry. The entry contains 13616 atoms, of which 0 are hydrogens and 0 are deuteriums.

In the tables below, the ZeroOcc column contains the number of atoms modelled with zero occupancy, the AltConf column contains the number of residues with at least one atom in alternate conformation and the Trace column contains the number of residues modelled with at most 2 atoms.

- Molecule 1 is a protein called Endothelial nitric oxide synthase splice variant eNOS13A.

Mol	Chain	Residues	Atoms					ZeroOcc	AltConf	Trace
1	A	404	Total	C	N	O	S	0	2	0
			3237	2062	570	589	16			
1	B	404	Total	C	N	O	S	0	3	0
			3241	2063	572	589	17			
1	C	402	Total	C	N	O	S	0	2	0
			3218	2050	565	587	16			
1	D	404	Total	C	N	O	S	0	3	0
			3241	2063	572	589	17			

- Molecule 2 is PROTOPORPHYRIN IX CONTAINING FE (three-letter code: HEM) (formula: $C_{34}H_{32}FeN_4O_4$).



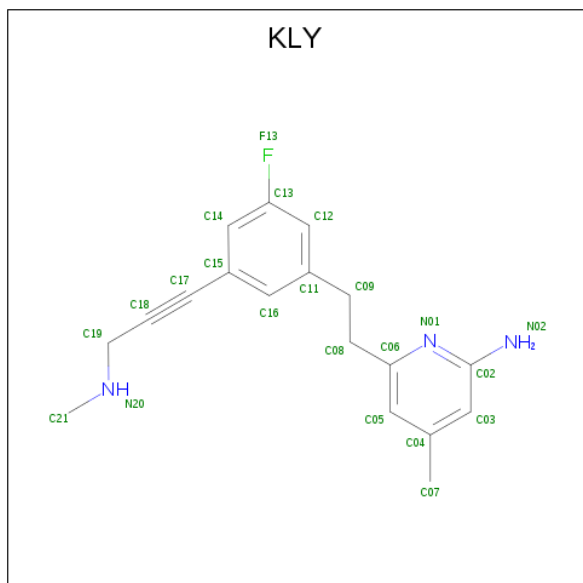
Mol	Chain	Residues	Atoms				ZeroOcc	AltConf
2	A	1	Total	C	Fe	N O	0	0
			43	34	1	4 4		
2	B	1	Total	C	Fe	N O	0	0
			43	34	1	4 4		

Continued on next page...

Continued from previous page...

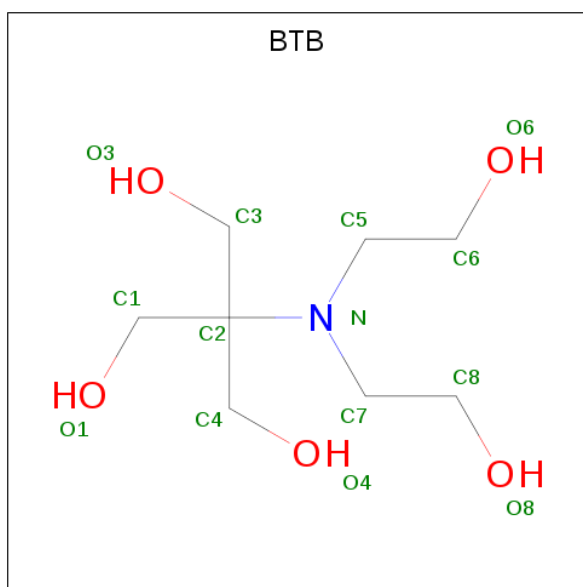
Mol	Chain	Residues	Atoms					ZeroOcc	AltConf
2	C	1	Total	C	Fe	N	O	0	0
			43	34	1	4	4		
2	D	1	Total	C	Fe	N	O	0	0
			43	34	1	4	4		

- Molecule 3 is 6-(2-{3-fluoro-5-[3-(methylamino)prop-1-yn-1-yl]phenyl}ethyl)-4-methylpyridine-2-amine (three-letter code: KLY) (formula: C₁₈H₂₀FN₃).



Mol	Chain	Residues	Atoms				ZeroOcc	AltConf
3	A	1	Total	C	F	N	0	0
			22	18	1	3		
3	B	1	Total	C	F	N	0	0
			22	18	1	3		
3	C	1	Total	C	F	N	0	0
			22	18	1	3		
3	D	1	Total	C	F	N	0	0
			22	18	1	3		

- Molecule 4 is 2-[BIS-(2-HYDROXY-ETHYL)-AMINO]-2-HYDROXYMETHYL-PROPAN E-1,3-DIOL (three-letter code: BTB) (formula: C₈H₁₉NO₅).



Mol	Chain	Residues	Atoms				ZeroOcc	AltConf
4	A	1	Total	C	N	O	0	0
			14	8	1	5		
4	A	1	Total	C	N	O	0	0
			14	8	1	5		
4	A	1	Total	C	N	O	0	0
			14	8	1	5		
4	A	1	Total	C	N	O	0	0
			14	8	1	5		
4	B	1	Total	C	N	O	0	0
			14	8	1	5		
4	B	1	Total	C	N	O	0	0
			14	8	1	5		
4	B	1	Total	C	N	O	0	0
			14	8	1	5		
4	B	1	Total	C	N	O	0	0
			14	8	1	5		
4	C	1	Total	C	N	O	0	0
			14	8	1	5		
4	D	1	Total	C	N	O	0	0
			14	8	1	5		
4	D	1	Total	C	N	O	0	0
			14	8	1	5		

- Molecule 5 is ZINC ION (three-letter code: ZN) (formula: Zn).

Mol	Chain	Residues	Atoms		ZeroOcc	AltConf
5	B	1	Total	Zn	0	0
			1	1		

Continued on next page...

Continued from previous page...

Mol	Chain	Residues	Atoms		ZeroOcc	AltConf
5	A	1	Total	Zn	0	0
			1	1		
5	D	1	Total	Zn	0	0
			1	1		
5	C	1	Total	Zn	0	0
			1	1		

- Molecule 6 is GLYCEROL (three-letter code: GOL) (formula: $C_3H_8O_3$).



Mol	Chain	Residues	Atoms			ZeroOcc	AltConf
6	A	1	Total	C	O	0	0
			6	3	3		
6	C	1	Total	C	O	0	0
			6	3	3		

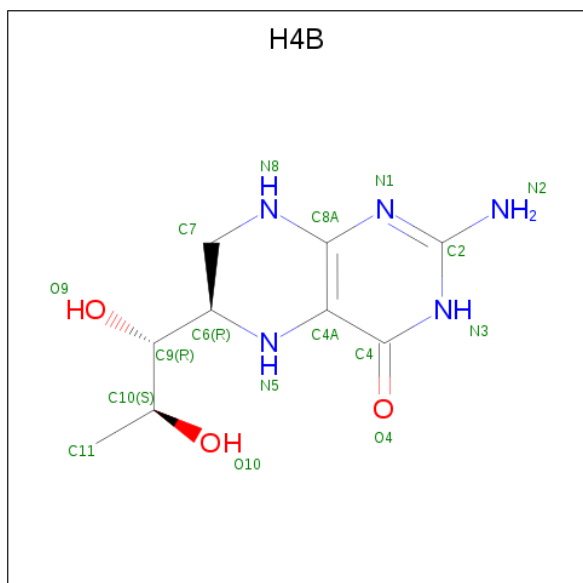
- Molecule 7 is CHLORIDE ION (three-letter code: CL) (formula: Cl).

Mol	Chain	Residues	Atoms		ZeroOcc	AltConf
7	B	1	Total	Cl	0	0
			1	1		
7	A	1	Total	Cl	0	0
			1	1		
7	D	1	Total	Cl	0	0
			1	1		
7	C	1	Total	Cl	0	0
			1	1		

- Molecule 8 is GADOLINIUM ATOM (three-letter code: GD) (formula: Gd).

Mol	Chain	Residues	Atoms		ZeroOcc	AltConf
8	B	1	Total	Gd	0	0
			1	1		
8	A	1	Total	Gd	0	0
			1	1		
8	D	1	Total	Gd	0	0
			1	1		
8	C	1	Total	Gd	0	0
			1	1		

- Molecule 9 is 5,6,7,8-TETRAHYDROBIOPTERIN (three-letter code: H4B) (formula: C₉H₁₅N₅O₃).

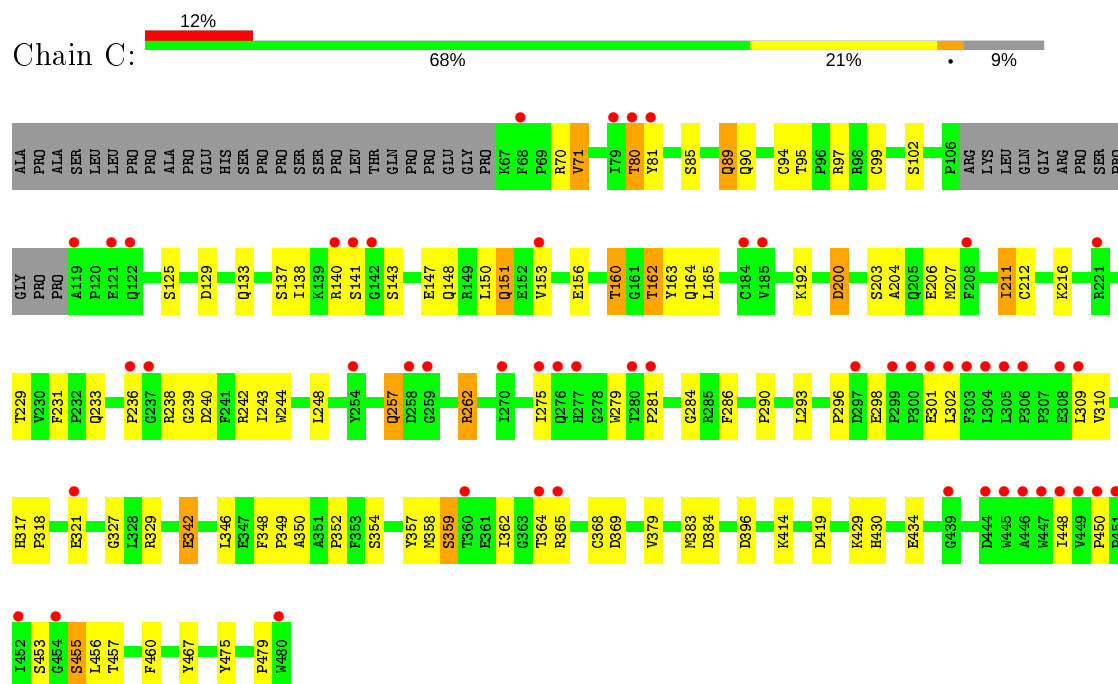


Mol	Chain	Residues	Atoms				ZeroOcc	AltConf
9	B	1	Total	C	N	O	0	0
			17	9	5	3		
9	B	1	Total	C	N	O	0	0
			17	9	5	3		
9	C	1	Total	C	N	O	0	0
			17	9	5	3		
9	D	1	Total	C	N	O	0	0
			17	9	5	3		

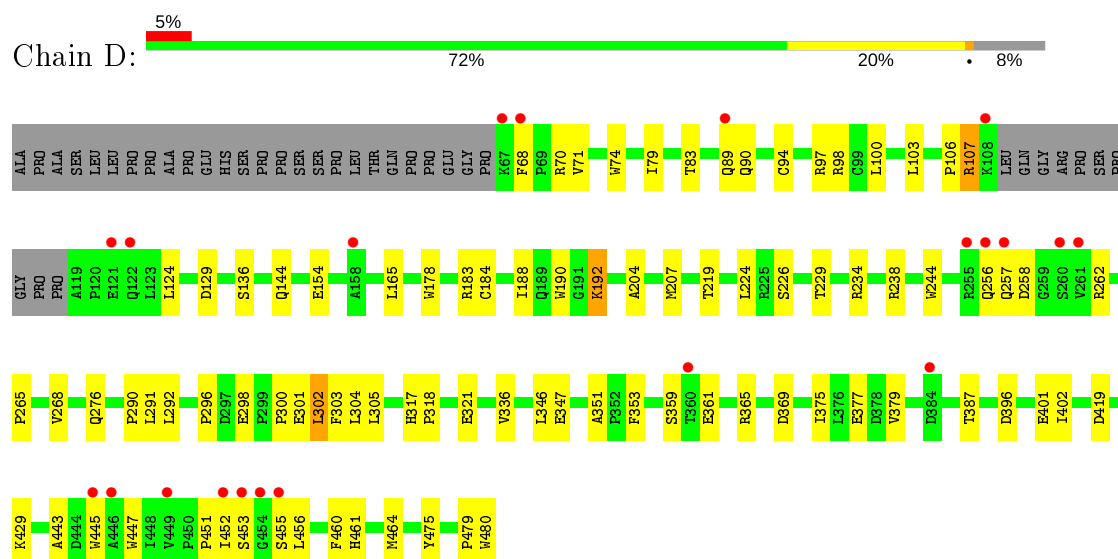
- Molecule 10 is water.

Mol	Chain	Residues	Atoms		ZeroOcc	AltConf
10	A	28	Total 28	O 28	0	0
10	B	56	Total 56	O 56	0	0
10	C	29	Total 29	O 29	0	0
10	D	60	Total 60	O 60	0	0

• Molecule 1: Endothelial nitric oxide synthase splice variant eNOS13A



• Molecule 1: Endothelial nitric oxide synthase splice variant eNOS13A



4 Data and refinement statistics

Property	Value	Source
Space group	P 1 21 1	Depositor
Cell constants a, b, c, α , β , γ	59.26 Å 152.46 Å 108.82 Å 90.00° 90.73° 90.00°	Depositor
Resolution (Å)	38.99 – 2.22 38.99 – 2.22	Depositor EDS
% Data completeness (in resolution range)	96.2 (38.99-2.22) 96.5 (38.99-2.22)	Depositor EDS
R_{merge}	0.19	Depositor
R_{sym}	0.19	Depositor
$\langle I/\sigma(I) \rangle$ ¹	1.68 (at 2.22 Å)	Xtriage
Refinement program	PHENIX 1.11.1-2575 _1496	Depositor
R, R_{free}	0.212 , 0.280 0.205 , 0.273	Depositor DCC
R_{free} test set	4608 reflections (5.00%)	wwPDB-VP
Wilson B-factor (Å ²)	44.8	Xtriage
Anisotropy	0.601	Xtriage
Bulk solvent k_{sol} (e/Å ³), B_{sol} (Å ²)	0.33 , 51.6	EDS
L-test for twinning ²	$\langle L \rangle = 0.50$, $\langle L^2 \rangle = 0.33$	Xtriage
Estimated twinning fraction	0.126 for h,-k,-l	Xtriage
F_o, F_c correlation	0.96	EDS
Total number of atoms	13616	wwPDB-VP
Average B, all atoms (Å ²)	77.0	wwPDB-VP

Xtriage's analysis on translational NCS is as follows: *The largest off-origin peak in the Patterson function is 3.66% of the height of the origin peak. No significant pseudotranslation is detected.*

¹Intensities estimated from amplitudes.

²Theoretical values of $\langle |L| \rangle$, $\langle L^2 \rangle$ for acentric reflections are 0.5, 0.333 respectively for untwinned datasets, and 0.375, 0.2 for perfectly twinned datasets.

5 Model quality

5.1 Standard geometry

Bond lengths and bond angles in the following residue types are not validated in this section: GOL, ZN, H4B, CL, GD, BTB, HEM, KLY

The Z score for a bond length (or angle) is the number of standard deviations the observed value is removed from the expected value. A bond length (or angle) with $|Z| > 5$ is considered an outlier worth inspection. RMSZ is the root-mean-square of all Z scores of the bond lengths (or angles).

Mol	Chain	Bond lengths		Bond angles	
		RMSZ	# Z >5	RMSZ	# Z >5
1	A	0.39	0/3335	0.57	0/4543
1	B	0.42	0/3339	0.57	0/4548
1	C	0.40	0/3316	0.55	0/4518
1	D	0.44	0/3339	0.60	1/4548 (0.0%)
All	All	0.41	0/13329	0.57	1/18157 (0.0%)

Chiral center outliers are detected by calculating the chiral volume of a chiral center and verifying if the center is modelled as a planar moiety or with the opposite hand. A planarity outlier is detected by checking planarity of atoms in a peptide group, atoms in a mainchain group or atoms of a sidechain that are expected to be planar.

Mol	Chain	#Chirality outliers	#Planarity outliers
1	A	0	1
1	D	0	1
All	All	0	2

There are no bond length outliers.

All (1) bond angle outliers are listed below:

Mol	Chain	Res	Type	Atoms	Z	Observed(°)	Ideal(°)
1	D	369	ASP	CB-CG-OD1	5.20	122.98	118.30

There are no chirality outliers.

All (2) planarity outliers are listed below:

Mol	Chain	Res	Type	Group
1	A	122	GLN	Peptide
1	D	257	GLN	Peptide

5.2 Too-close contacts ⓘ

In the following table, the Non-H and H(model) columns list the number of non-hydrogen atoms and hydrogen atoms in the chain respectively. The H(added) column lists the number of hydrogen atoms added and optimized by MolProbity. The Clashes column lists the number of clashes within the asymmetric unit, whereas Symm-Clashes lists symmetry related clashes.

Mol	Chain	Non-H	H(model)	H(added)	Clashes	Symm-Clashes
1	A	3237	0	3146	66	0
1	B	3241	0	3152	40	0
1	C	3218	0	3122	60	0
1	D	3241	0	3152	50	0
2	A	43	0	30	5	0
2	B	43	0	30	2	0
2	C	43	0	30	3	0
2	D	43	0	30	6	0
3	A	22	0	0	1	0
3	B	22	0	0	0	0
3	C	22	0	0	0	0
3	D	22	0	0	2	0
4	A	56	0	76	12	0
4	B	56	0	71	7	0
4	C	14	0	19	5	0
4	D	28	0	36	6	0
5	A	1	0	0	0	0
5	B	1	0	0	0	0
5	C	1	0	0	0	0
5	D	1	0	0	0	0
6	A	6	0	8	1	0
6	C	6	0	8	0	0
7	A	1	0	0	0	0
7	B	1	0	0	0	0
7	C	1	0	0	0	0
7	D	1	0	0	0	0
8	A	1	0	0	0	0
8	B	1	0	0	0	0
8	C	1	0	0	0	0
8	D	1	0	0	0	0
9	B	34	0	30	0	0
9	C	17	0	13	0	0
9	D	17	0	15	0	0
10	A	28	0	0	1	0
10	B	56	0	0	3	0
10	C	29	0	0	1	0
10	D	60	0	0	4	0

Continued on next page...

Continued from previous page...

Mol	Chain	Non-H	H(model)	H(added)	Clashes	Symm-Clashes
All	All	13616	0	12968	237	0

The all-atom clashscore is defined as the number of clashes found per 1000 atoms (including hydrogen atoms). The all-atom clashscore for this structure is 9.

The worst 5 of 237 close contacts within the same asymmetric unit are listed below, sorted by their clash magnitude.

Atom-1	Atom-2	Interatomic distance (Å)	Clash overlap (Å)
1:D:365:ARG:NH1	2:D:501:HEM:O2A	2.10	0.85
1:C:365:ARG:NH2	1:C:369:ASP:OD2	2.14	0.80
1:B:298:GLU:HG3	4:B:506:BTB:H31	1.66	0.77
4:A:510:BTB:O1	4:A:510:BTB:O4	1.94	0.76
1:D:100:LEU:HB3	1:D:103:LEU:HD12	1.68	0.75

There are no symmetry-related clashes.

5.3 Torsion angles [i](#)

5.3.1 Protein backbone [i](#)

In the following table, the Percentiles column shows the percent Ramachandran outliers of the chain as a percentile score with respect to all X-ray entries followed by that with respect to entries of similar resolution.

The Analysed column shows the number of residues for which the backbone conformation was analysed, and the total number of residues.

Mol	Chain	Analysed	Favoured	Allowed	Outliers	Percentiles	
1	A	402/440 (91%)	364 (90%)	33 (8%)	5 (1%)	13	9
1	B	403/440 (92%)	383 (95%)	18 (4%)	2 (0%)	29	30
1	C	400/440 (91%)	382 (96%)	16 (4%)	2 (0%)	29	30
1	D	403/440 (92%)	389 (96%)	12 (3%)	2 (0%)	29	30
All	All	1608/1760 (91%)	1518 (94%)	79 (5%)	11 (1%)	22	21

5 of 11 Ramachandran outliers are listed below:

Mol	Chain	Res	Type
1	A	120	PRO
1	A	283	ASN

Continued on next page...

Continued from previous page...

Mol	Chain	Res	Type
1	A	90	GLN
1	D	107	ARG
1	B	107	ARG

5.3.2 Protein sidechains [i](#)

In the following table, the Percentiles column shows the percent sidechain outliers of the chain as a percentile score with respect to all X-ray entries followed by that with respect to entries of similar resolution.

The Analysed column shows the number of residues for which the sidechain conformation was analysed, and the total number of residues.

Mol	Chain	Analysed	Rotameric	Outliers	Percentiles	
1	A	345/373 (92%)	316 (92%)	29 (8%)	11	10
1	B	346/373 (93%)	334 (96%)	12 (4%)	36	44
1	C	343/373 (92%)	314 (92%)	29 (8%)	10	9
1	D	346/373 (93%)	329 (95%)	17 (5%)	25	29
All	All	1380/1492 (92%)	1293 (94%)	87 (6%)	18	19

5 of 87 residues with a non-rotameric sidechain are listed below:

Mol	Chain	Res	Type
1	B	396	ASP
1	C	125	SER
1	D	256	GLN
1	B	470	SER
1	C	90	GLN

Some sidechains can be flipped to improve hydrogen bonding and reduce clashes. All (1) such sidechains are listed below:

Mol	Chain	Res	Type
1	A	294	GLN

5.3.3 RNA [i](#)

There are no RNA molecules in this entry.

5.4 Non-standard residues in protein, DNA, RNA chains [i](#)

There are no non-standard protein/DNA/RNA residues in this entry.

5.5 Carbohydrates [i](#)

There are no carbohydrates in this entry.

5.6 Ligand geometry [i](#)

Of 37 ligands modelled in this entry, 12 are monoatomic - leaving 25 for Mogul analysis.

In the following table, the Counts columns list the number of bonds (or angles) for which Mogul statistics could be retrieved, the number of bonds (or angles) that are observed in the model and the number of bonds (or angles) that are defined in the Chemical Component Dictionary. The Link column lists molecule types, if any, to which the group is linked. The Z score for a bond length (or angle) is the number of standard deviations the observed value is removed from the expected value. A bond length (or angle) with $|Z| > 2$ is considered an outlier worth inspection. RMSZ is the root-mean-square of all Z scores of the bond lengths (or angles).

Mol	Type	Chain	Res	Link	Bond lengths			Bond angles		
					Counts	RMSZ	# $ Z > 2$	Counts	RMSZ	# $ Z > 2$
2	HEM	B	502	1	27,50,50	1.89	5 (18%)	17,82,82	2.37	7 (41%)
9	H4B	B	503	-	16,18,18	0.85	0	11,26,26	2.60	6 (54%)
2	HEM	D	501	1	27,50,50	1.79	4 (14%)	17,82,82	2.09	9 (52%)
4	BTB	B	505	8	13,13,13	0.53	0	7,16,16	0.72	0
4	BTB	A	505	-	13,13,13	0.43	0	7,16,16	0.66	0
4	BTB	A	510	-	13,13,13	1.64	2 (15%)	7,16,16	2.65	2 (28%)
4	BTB	A	504	-	13,13,13	0.53	0	7,16,16	1.13	0
9	H4B	D	502	-	16,18,18	0.85	0	11,26,26	2.88	6 (54%)
4	BTB	B	511	-	13,13,13	0.82	1 (7%)	7,16,16	1.54	2 (28%)
2	HEM	A	501	1	27,50,50	1.89	5 (18%)	17,82,82	2.12	4 (23%)
9	H4B	C	502	2	16,18,18	1.24	1 (6%)	11,26,26	2.70	4 (36%)
4	BTB	B	510	8	13,13,13	0.38	0	7,16,16	0.82	0
3	KLY	A	502	-	22,23,23	1.55	1 (4%)	28,30,30	2.07	8 (28%)
6	GOL	A	507	-	5,5,5	0.41	0	5,5,5	0.61	0
3	KLY	C	503	-	22,23,23	1.56	1 (4%)	28,30,30	1.97	9 (32%)
9	H4B	B	501	-	16,18,18	0.92	0	11,26,26	2.47	6 (54%)
2	HEM	C	501	1,9	27,50,50	1.90	4 (14%)	17,82,82	1.88	3 (17%)
4	BTB	A	503	8	13,13,13	0.35	0	7,16,16	0.55	0
4	BTB	C	504	-	13,13,13	0.48	0	7,16,16	0.31	0
4	BTB	D	505	-	13,13,13	0.63	0	7,16,16	1.06	0

Mol	Type	Chain	Res	Link	Bond lengths			Bond angles		
					Counts	RMSZ	# Z > 2	Counts	RMSZ	# Z > 2
3	KLY	B	504	-	22,23,23	1.42	1 (4%)	28,30,30	1.99	11 (39%)
4	BTB	B	506	-	13,13,13	0.38	0	7,16,16	0.79	0
3	KLY	D	503	-	22,23,23	1.53	1 (4%)	28,30,30	2.67	13 (46%)
4	BTB	D	504	8	13,13,13	0.73	0	7,16,16	1.36	1 (14%)
6	GOL	C	506	-	5,5,5	0.46	0	5,5,5	0.47	0

In the following table, the Chirals column lists the number of chiral outliers, the number of chiral centers analysed, the number of these observed in the model and the number defined in the Chemical Component Dictionary. Similar counts are reported in the Torsion and Rings columns. '-' means no outliers of that kind were identified.

Mol	Type	Chain	Res	Link	Chirals	Torsions	Rings
2	HEM	B	502	1	-	3/6/54/54	-
9	H4B	B	503	-	-	4/8/17/17	0/2/2/2
2	HEM	D	501	1	-	1/6/54/54	-
4	BTB	B	505	8	-	4/21/21/21	-
4	BTB	A	505	-	-	11/21/21/21	-
4	BTB	A	510	-	-	8/21/21/21	-
4	BTB	A	504	-	-	5/21/21/21	-
9	H4B	D	502	-	-	4/8/17/17	0/2/2/2
4	BTB	B	511	-	-	5/21/21/21	-
2	HEM	A	501	1	-	3/6/54/54	-
9	H4B	C	502	2	-	0/8/17/17	0/2/2/2
4	BTB	B	510	8	-	4/21/21/21	-
3	KLY	A	502	-	-	3/8/10/10	0/2/2/2
6	GOL	A	507	-	-	4/4/4/4	-
3	KLY	C	503	-	-	0/8/10/10	0/2/2/2
9	H4B	B	501	-	-	3/8/17/17	0/2/2/2
2	HEM	C	501	1,9	-	1/6/54/54	-
4	BTB	A	503	8	-	1/21/21/21	-
4	BTB	C	504	-	-	7/21/21/21	-
4	BTB	D	505	-	-	9/21/21/21	-
3	KLY	B	504	-	-	1/8/10/10	0/2/2/2
4	BTB	B	506	-	-	3/21/21/21	-
3	KLY	D	503	-	-	1/8/10/10	0/2/2/2
4	BTB	D	504	8	-	7/21/21/21	-
6	GOL	C	506	-	-	2/4/4/4	-

The worst 5 of 26 bond length outliers are listed below:

Mol	Chain	Res	Type	Atoms	Z	Observed(Å)	Ideal(Å)
3	C	503	KLY	C15-C17	-6.98	1.27	1.44
3	D	503	KLY	C15-C17	-6.54	1.28	1.44
3	A	502	KLY	C15-C17	-6.36	1.29	1.44
3	B	504	KLY	C15-C17	-6.11	1.29	1.44
2	B	502	HEM	C3B-C2B	-5.35	1.32	1.40

The worst 5 of 91 bond angle outliers are listed below:

Mol	Chain	Res	Type	Atoms	Z	Observed(°)	Ideal(°)
9	C	502	H4B	C4-C4A-C8A	7.04	120.82	114.57
9	D	502	H4B	C4-C4A-C8A	6.04	119.93	114.57
4	A	510	BTB	O4-C4-C2	-5.72	95.78	111.44
3	D	503	KLY	C14-C15-C17	-5.62	109.88	120.19
3	D	503	KLY	C02-N01-C06	5.47	122.25	118.10

There are no chirality outliers.

5 of 94 torsion outliers are listed below:

Mol	Chain	Res	Type	Atoms
2	B	502	HEM	C1A-C2A-CAA-CBA
2	B	502	HEM	C3A-C2A-CAA-CBA
2	B	502	HEM	C2A-CAA-CBA-CGA
9	B	503	H4B	N5-C6-C9-O9
9	B	503	H4B	N5-C6-C9-C10

There are no ring outliers.

17 monomers are involved in 49 short contacts:

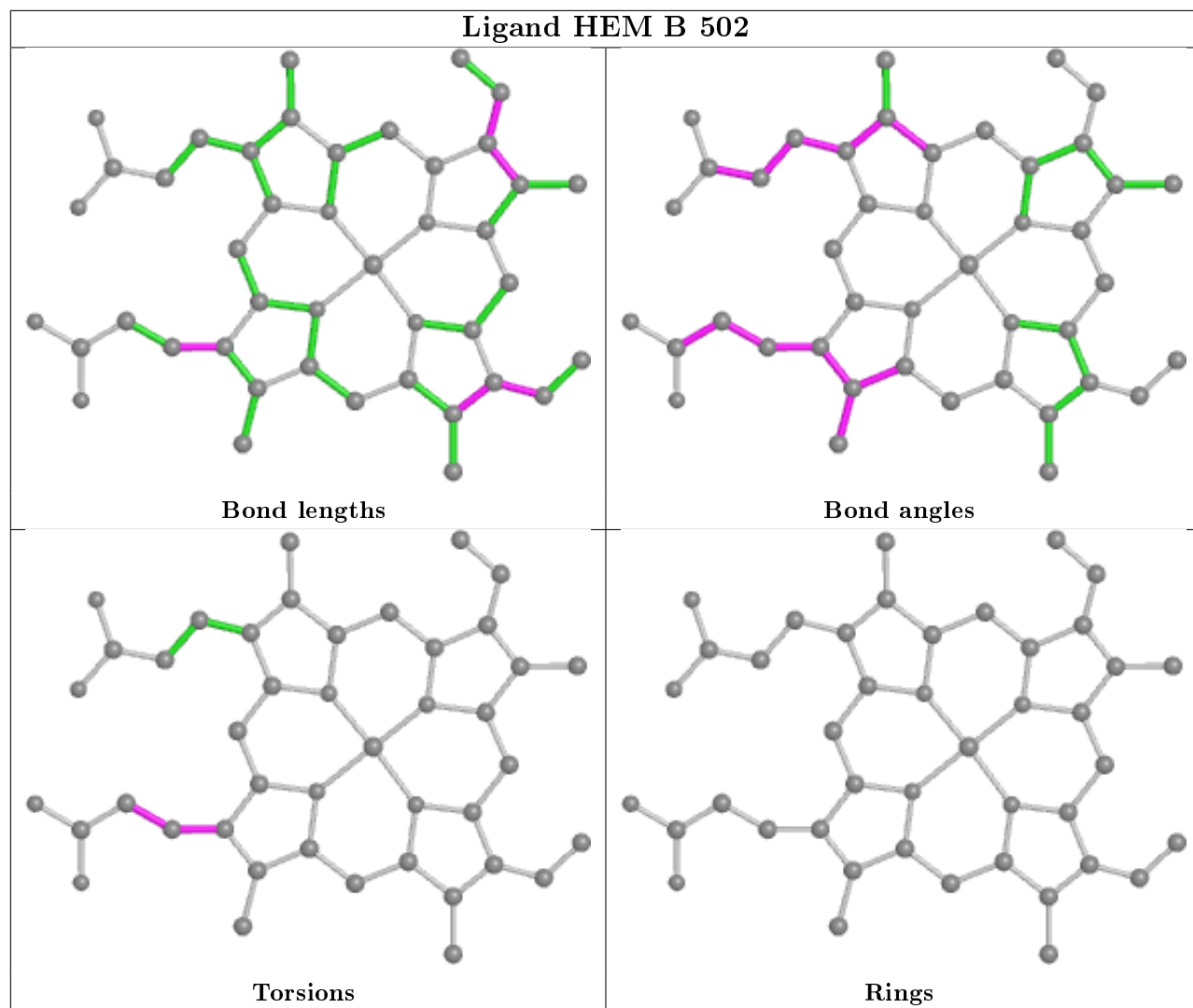
Mol	Chain	Res	Type	Clashes	Symm-Clashes
2	B	502	HEM	2	0
2	D	501	HEM	6	0
4	B	505	BTB	1	0
4	A	505	BTB	2	0
4	A	510	BTB	9	0
4	B	511	BTB	1	0
2	A	501	HEM	5	0
4	B	510	BTB	2	0
3	A	502	KLY	1	0
6	A	507	GOL	1	0
2	C	501	HEM	3	0

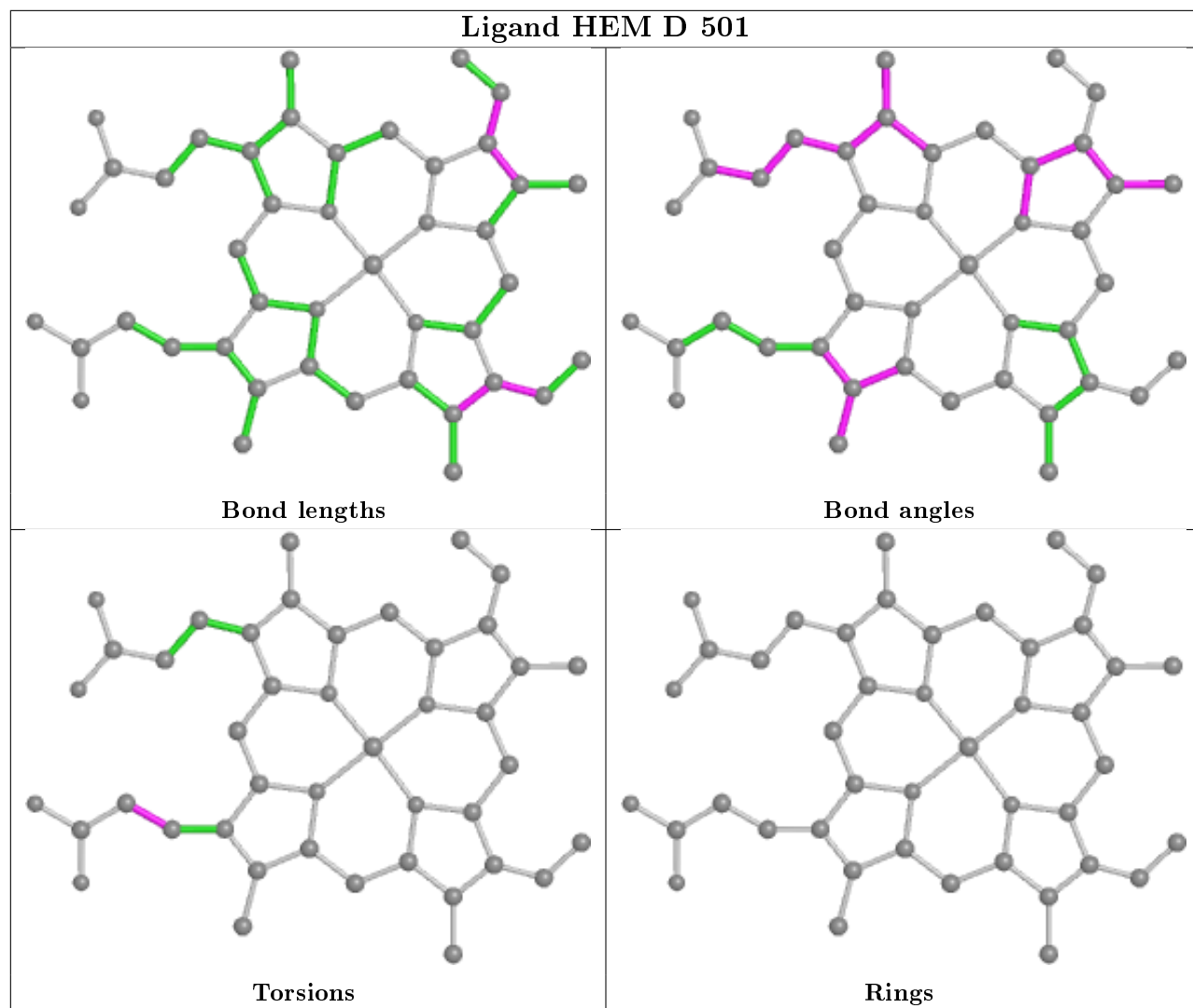
Continued on next page...

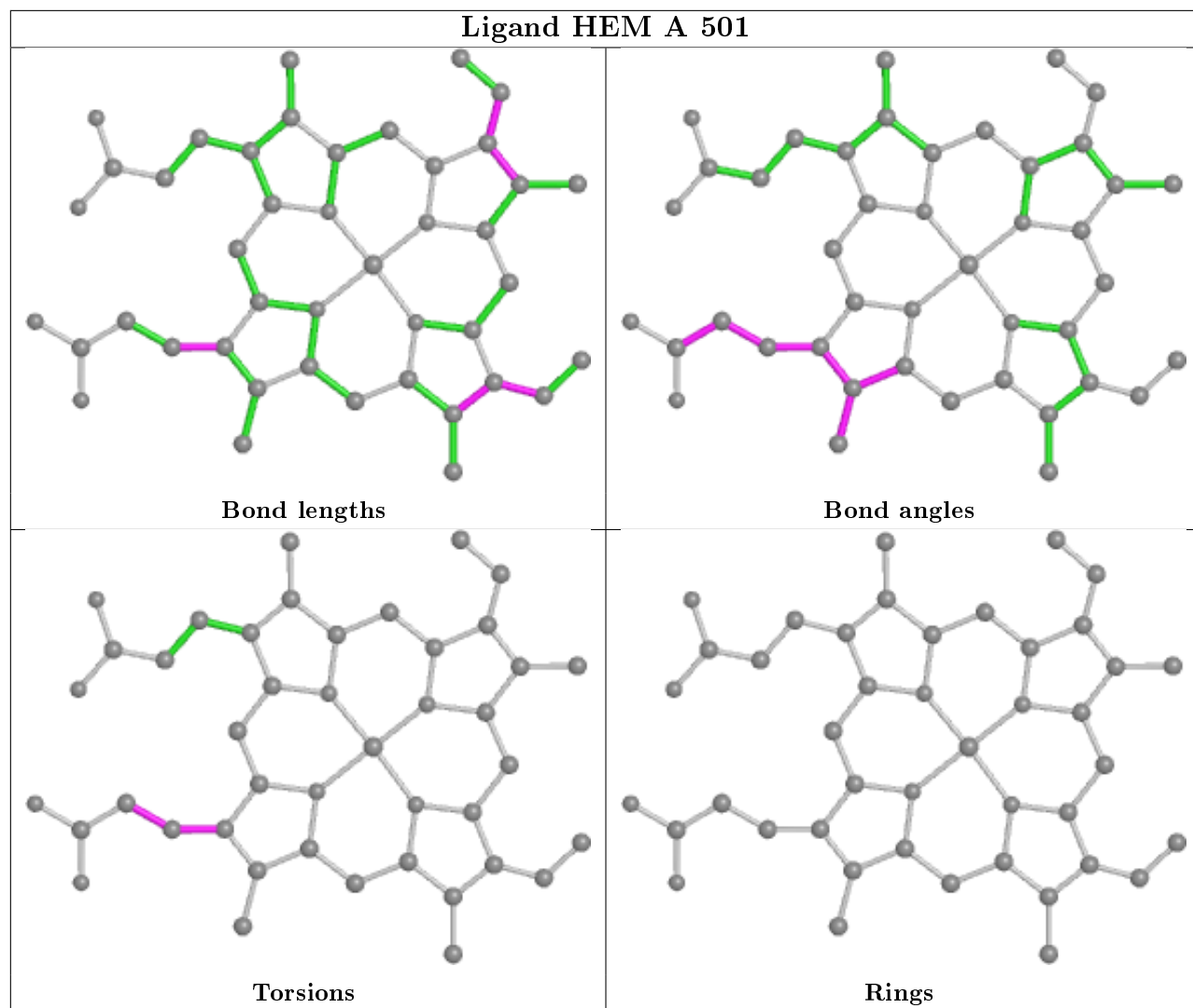
Continued from previous page...

Mol	Chain	Res	Type	Clashes	Symm-Clashes
4	A	503	BTB	1	0
4	C	504	BTB	5	0
4	D	505	BTB	3	0
4	B	506	BTB	3	0
3	D	503	KLY	2	0
4	D	504	BTB	3	0

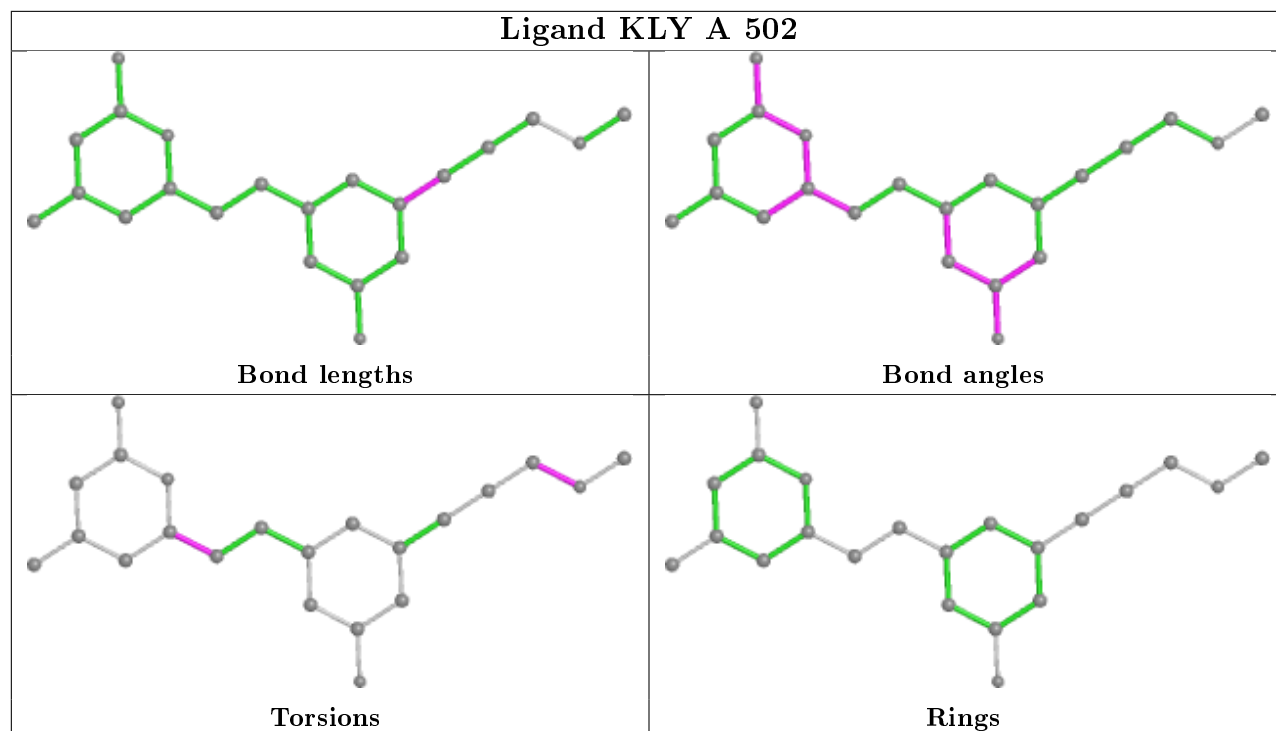
The following is a two-dimensional graphical depiction of Mogul quality analysis of bond lengths, bond angles, torsion angles, and ring geometry for all instances of the Ligand of Interest. In addition, ligands with molecular weight > 250 and outliers as shown on the validation Tables will also be included. For torsion angles, if less than 5% of the Mogul distribution of torsion angles is within 10 degrees of the torsion angle in question, then that torsion angle is considered an outlier. Any bond that is central to one or more torsion angles identified as an outlier by Mogul will be highlighted in the graph. For rings, the root-mean-square deviation (RMSD) between the ring in question and similar rings identified by Mogul is calculated over all ring torsion angles. If the average RMSD is greater than 60 degrees and the minimal RMSD between the ring in question and any Mogul-identified rings is also greater than 60 degrees, then that ring is considered an outlier. The outliers are highlighted in purple. The color gray indicates Mogul did not find sufficient equivalents in the CSD to analyse the geometry.



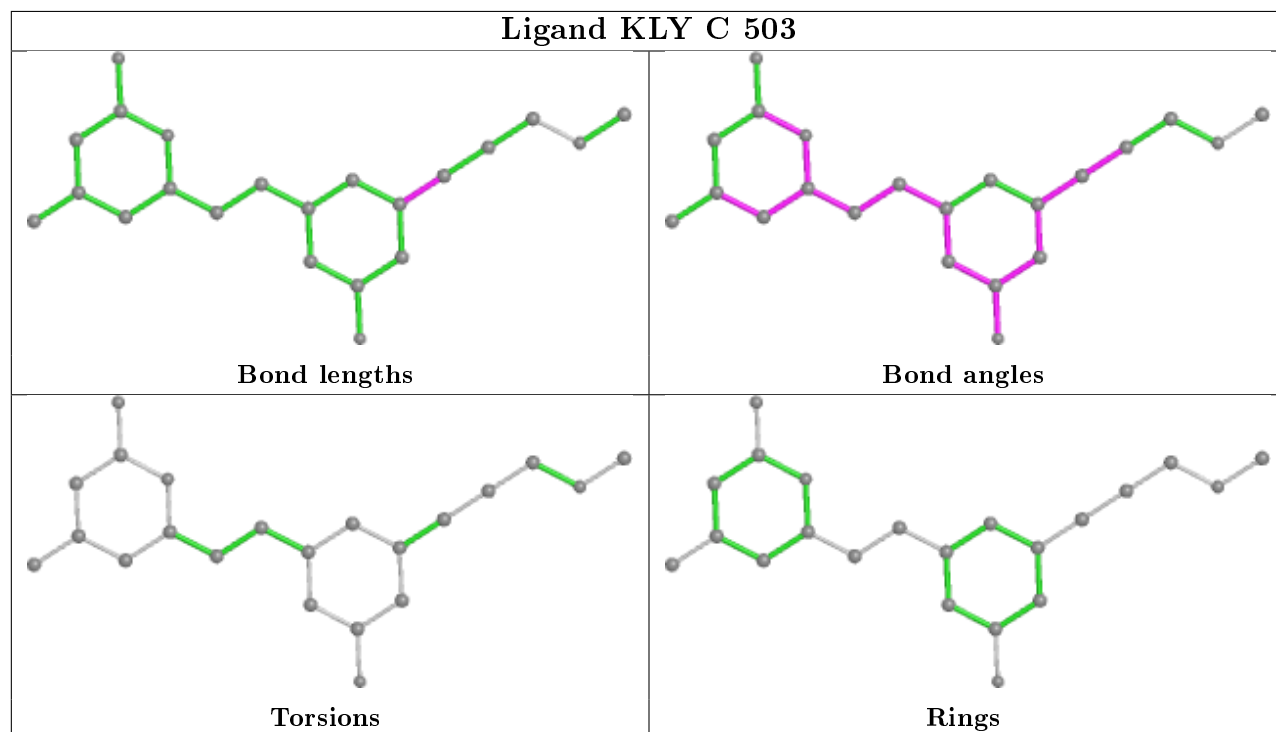


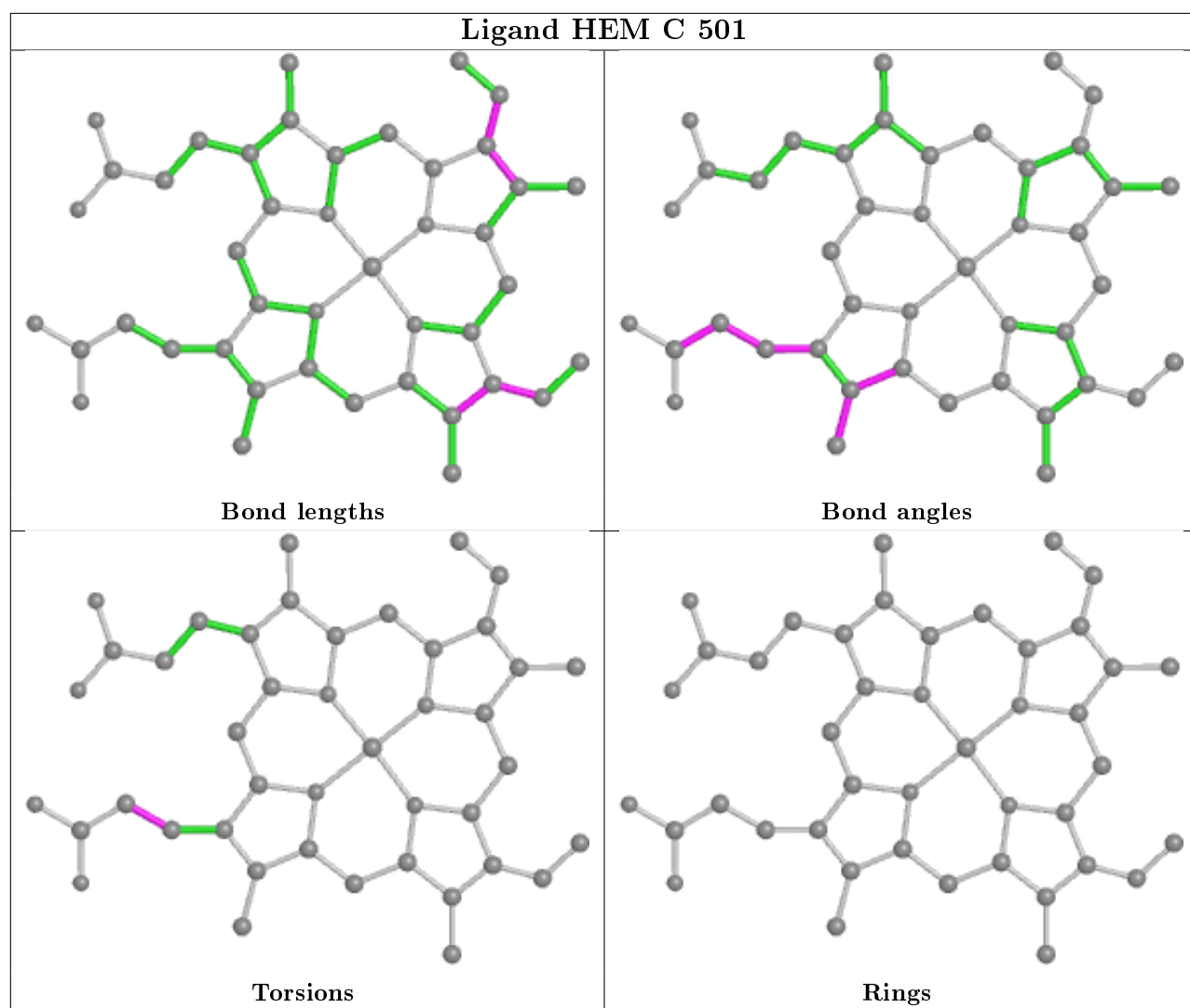


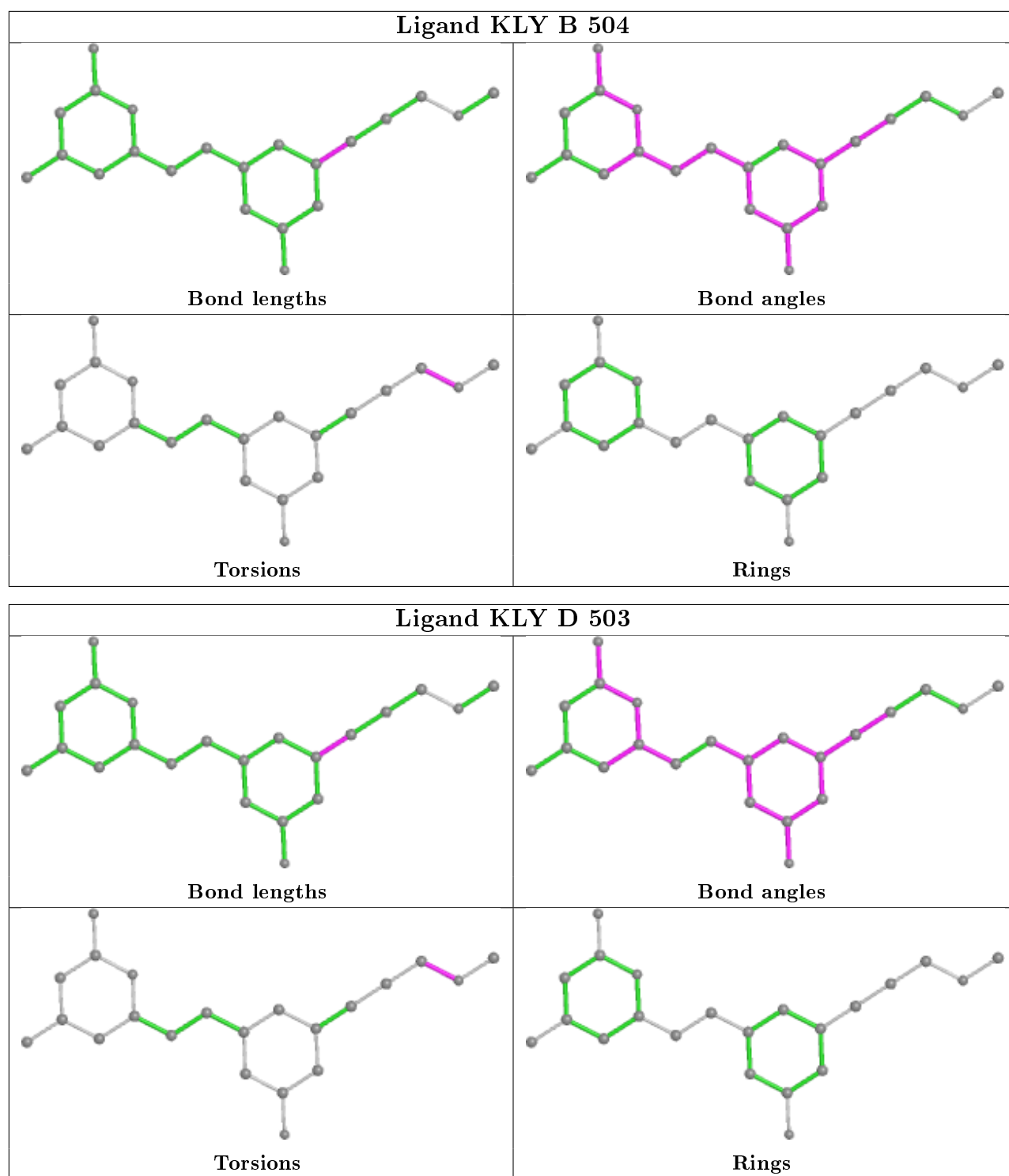
Ligand KLY A 502



Ligand KLY C 503







5.7 Other polymers [i](#)

There are no such residues in this entry.

5.8 Polymer linkage issues ⓘ

There are no chain breaks in this entry.

6 Fit of model and data [i](#)

6.1 Protein, DNA and RNA chains [i](#)

In the following table, the column labelled ‘#RSRZ> 2’ contains the number (and percentage) of RSRZ outliers, followed by percent RSRZ outliers for the chain as percentile scores relative to all X-ray entries and entries of similar resolution. The OWAB column contains the minimum, median, 95th percentile and maximum values of the occupancy-weighted average B-factor per residue. The column labelled ‘Q< 0.9’ lists the number of (and percentage) of residues with an average occupancy less than 0.9.

Mol	Chain	Analysed	<RSRZ>	#RSRZ>2	OWAB(Å ²)	Q<0.9
1	A	404/440 (91%)	0.94	73 (18%) 1 1	47, 84, 141, 177	0
1	B	404/440 (91%)	0.17	31 (7%) 13 12	38, 63, 106, 155	0
1	C	402/440 (91%)	0.64	53 (13%) 3 2	45, 79, 124, 171	0
1	D	404/440 (91%)	0.09	21 (5%) 27 25	38, 62, 100, 152	0
All	All	1614/1760 (91%)	0.46	178 (11%) 5 4	38, 70, 127, 177	0

The worst 5 of 178 RSRZ outliers are listed below:

Mol	Chain	Res	Type	RSRZ
1	A	109	LEU	9.0
1	A	204	ALA	5.6
1	B	388	ARG	5.5
1	A	259	GLY	5.4
1	A	153	VAL	5.1

6.2 Non-standard residues in protein, DNA, RNA chains [i](#)

There are no non-standard protein/DNA/RNA residues in this entry.

6.3 Carbohydrates [i](#)

There are no carbohydrates in this entry.

6.4 Ligands [i](#)

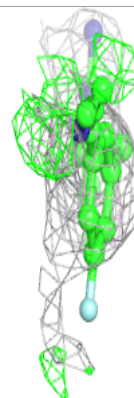
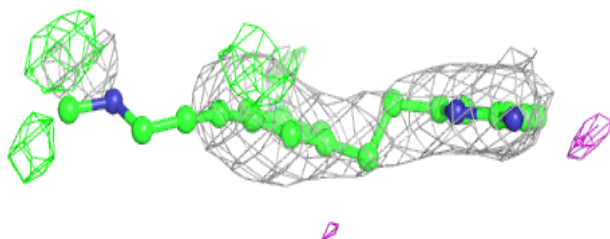
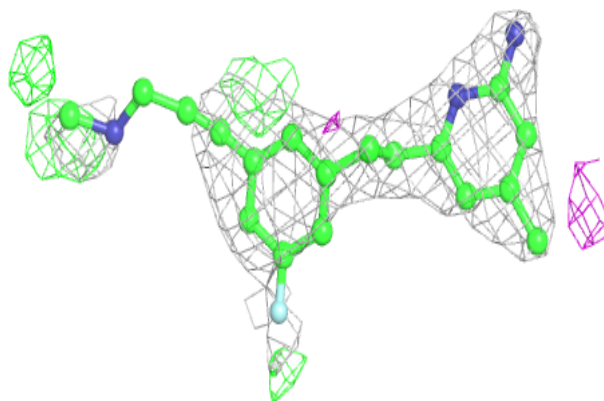
In the following table, the Atoms column lists the number of modelled atoms in the group and the number defined in the chemical component dictionary. The B-factors column lists the minimum, median, 95th percentile and maximum values of B factors of atoms in the group. The column labelled ‘Q< 0.9’ lists the number of atoms with occupancy less than 0.9.

Mol	Type	Chain	Res	Atoms	RSCC	RSR	B-factors(\AA^2)	Q<0.9
9	H4B	B	501	17/17	0.70	0.52	99,130,139,139	0
9	H4B	B	503	17/17	0.73	0.37	72,118,142,142	0
4	BTB	C	504	14/14	0.76	0.18	108,126,139,143	0
9	H4B	C	502	17/17	0.80	0.40	102,116,139,140	0
4	BTB	A	505	14/14	0.81	0.17	109,129,143,147	0
3	KLY	C	503	22/22	0.81	0.46	64,97,124,130	0
4	BTB	B	510	14/14	0.84	0.23	100,126,159,161	0
9	H4B	D	502	17/17	0.84	0.34	78,99,117,118	0
3	KLY	D	503	22/22	0.84	0.26	39,79,91,110	0
8	GD	C	508	1/1	0.85	0.13	286,286,286,286	0
3	KLY	A	502	22/22	0.86	0.49	58,99,135,136	0
7	CL	C	507	1/1	0.87	0.25	69,69,69,69	0
7	CL	A	508	1/1	0.88	0.29	85,85,85,85	0
8	GD	A	509	1/1	0.88	0.08	262,262,262,262	0
4	BTB	B	506	14/14	0.89	0.27	73,87,103,108	0
3	KLY	B	504	22/22	0.89	0.26	44,83,107,113	0
6	GOL	C	506	6/6	0.89	0.28	74,89,95,96	0
4	BTB	D	504	14/14	0.90	0.18	51,88,97,97	0
4	BTB	B	505	14/14	0.91	0.15	54,76,101,106	0
4	BTB	A	503	14/14	0.91	0.19	107,119,134,139	0
6	GOL	A	507	6/6	0.91	0.27	68,92,106,108	0
4	BTB	B	511	14/14	0.91	0.18	52,74,110,115	0
4	BTB	D	505	14/14	0.92	0.25	86,95,115,118	0
4	BTB	A	504	14/14	0.92	0.12	67,98,105,107	0
7	CL	D	507	1/1	0.93	0.13	60,60,60,60	0
4	BTB	A	510	14/14	0.94	0.19	33,78,123,134	0
7	CL	B	507	1/1	0.95	0.14	59,59,59,59	0
5	ZN	B	509	1/1	0.95	0.17	60,60,60,60	1
2	HEM	D	501	43/43	0.96	0.13	42,60,76,90	0
2	HEM	A	501	43/43	0.96	0.25	62,74,91,119	0
2	HEM	B	502	43/43	0.96	0.16	37,63,91,126	0
2	HEM	C	501	43/43	0.96	0.23	47,73,94,132	0
5	ZN	D	508	1/1	0.97	0.15	56,56,56,56	1
5	ZN	A	506	1/1	0.97	0.08	73,73,73,73	0
8	GD	B	508	1/1	0.98	0.12	67,67,67,67	0
8	GD	D	506	1/1	0.98	0.13	67,67,67,67	0
5	ZN	C	505	1/1	0.99	0.10	61,61,61,61	0

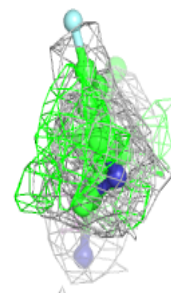
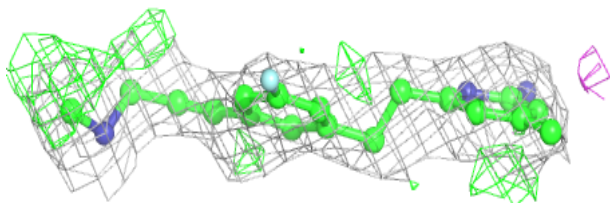
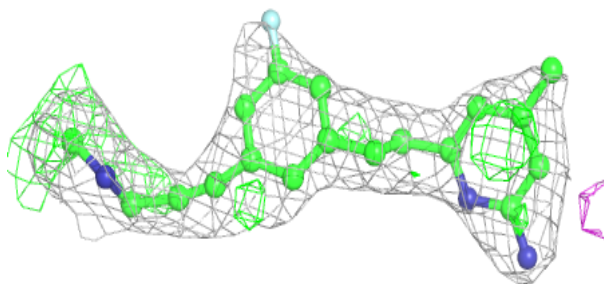
The following is a graphical depiction of the model fit to experimental electron density of all instances of the Ligand of Interest. In addition, ligands with molecular weight > 250 and outliers as shown on the geometry validation Tables will also be included. Each fit is shown from different orientation to approximate a three-dimensional view.

Electron density around KLY C 503:

$2mF_o-DF_c$ (at 0.7 rmsd) in gray
 mF_o-DF_c (at 3 rmsd) in purple (negative)
and green (positive)

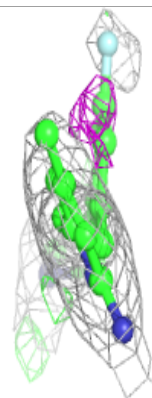
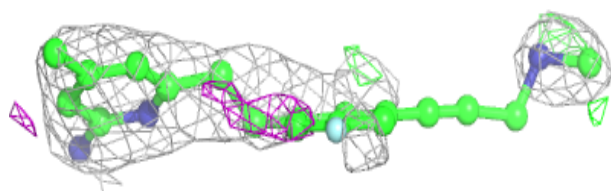
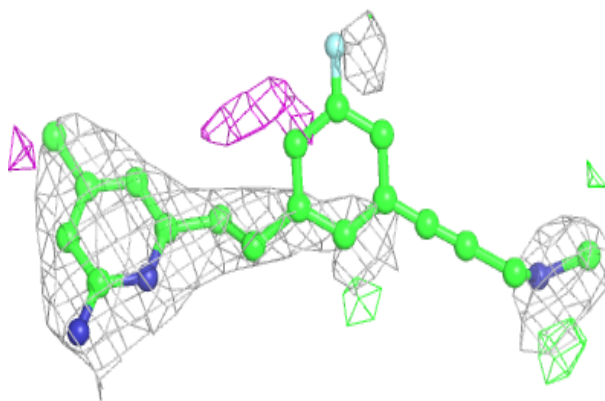
**Electron density around KLY D 503:**

$2mF_o-DF_c$ (at 0.7 rmsd) in gray
 mF_o-DF_c (at 3 rmsd) in purple (negative)
and green (positive)

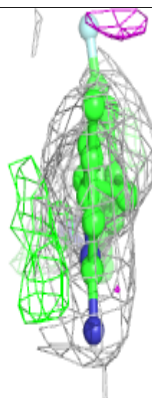
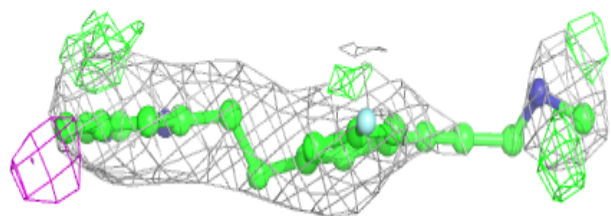
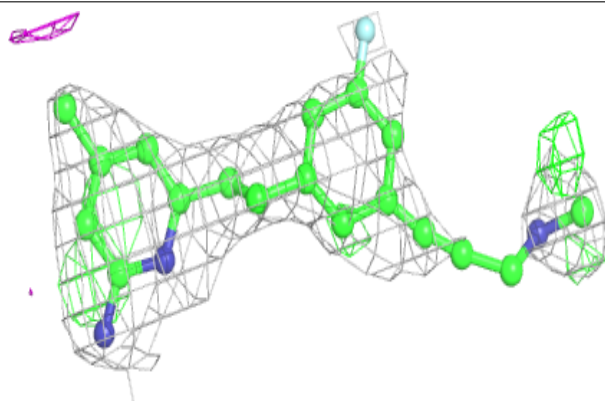


Electron density around KLY A 502:

$2mF_o-DF_c$ (at 0.7 rmsd) in gray
 mF_o-DF_c (at 3 rmsd) in purple (negative)
and green (positive)

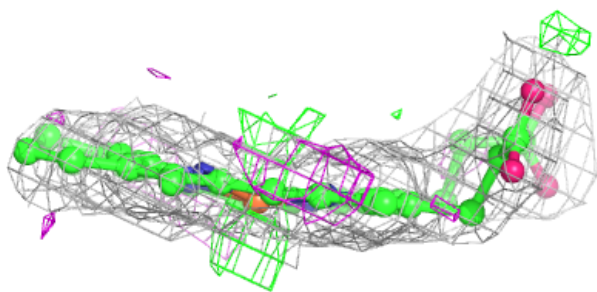
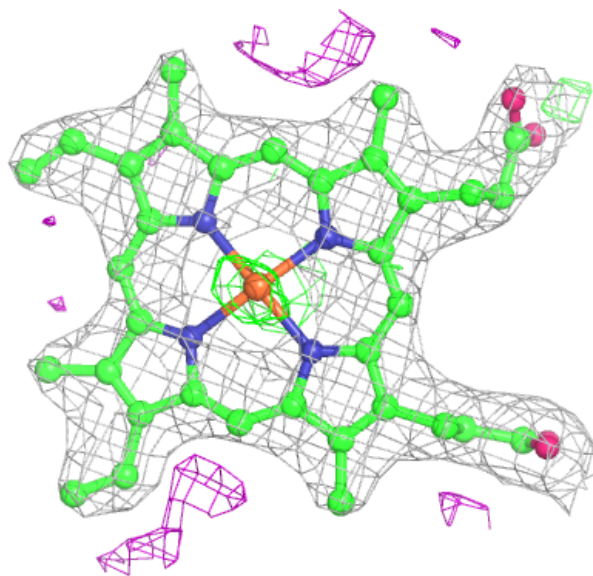
**Electron density around KLY B 504:**

$2mF_o-DF_c$ (at 0.7 rmsd) in gray
 mF_o-DF_c (at 3 rmsd) in purple (negative)
and green (positive)



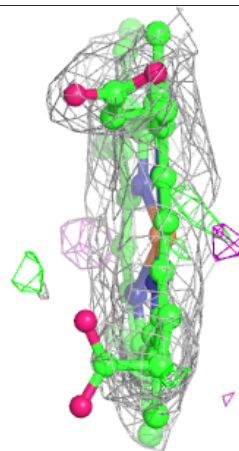
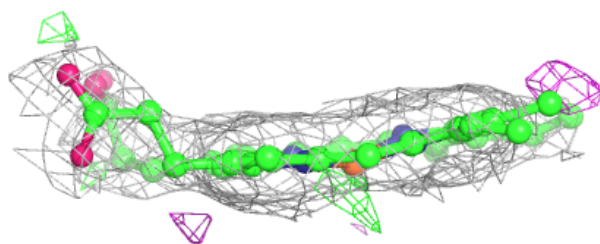
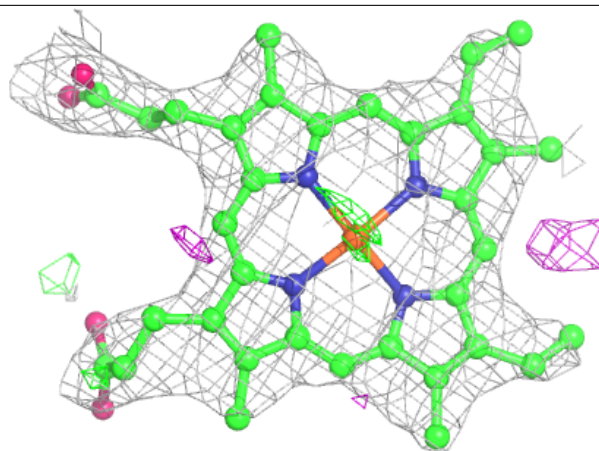
Electron density around HEM D 501:

$2mF_o-DF_c$ (at 0.7 rmsd) in gray
 mF_o-DF_c (at 3 rmsd) in purple (negative)
and green (positive)



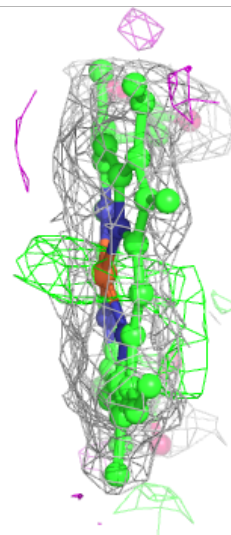
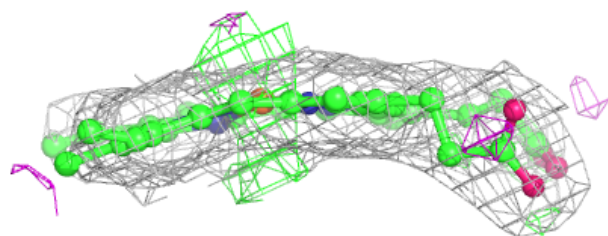
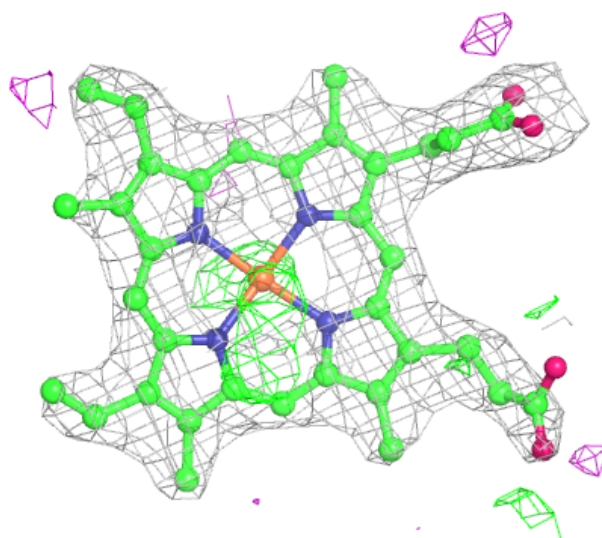
Electron density around HEM A 501:

$2mF_o-DF_c$ (at 0.7 rmsd) in gray
 mF_o-DF_c (at 3 rmsd) in purple (negative)
and green (positive)



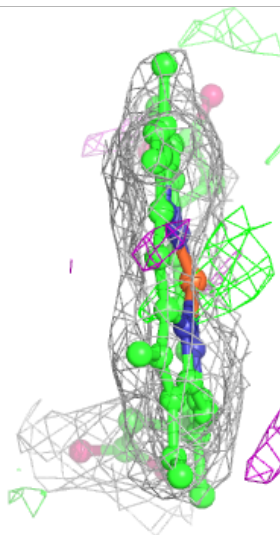
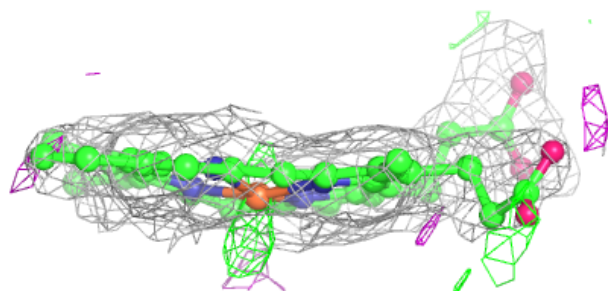
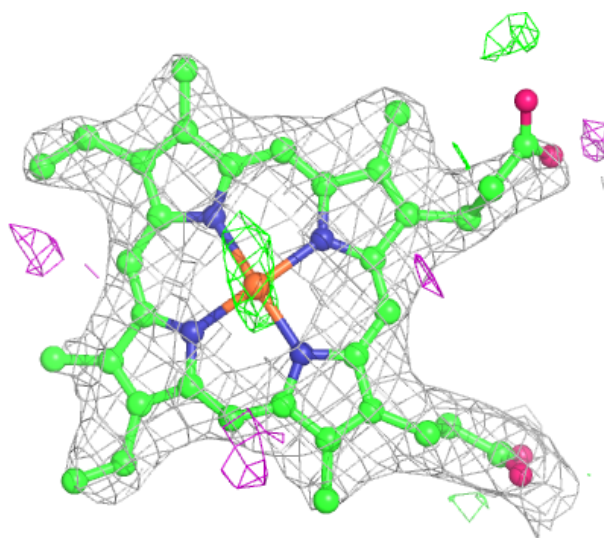
Electron density around HEM B 502:

$2mF_o-DF_c$ (at 0.7 rmsd) in gray
 mF_o-DF_c (at 3 rmsd) in purple (negative)
and green (positive)



Electron density around HEM C 501:

$2mF_o-DF_c$ (at 0.7 rmsd) in gray
 mF_o-DF_c (at 3 rmsd) in purple (negative)
and green (positive)

**6.5 Other polymers** [i](#)

There are no such residues in this entry.