



Full wwPDB X-ray Structure Validation Report ⓘ

Aug 25, 2020 – 03:38 PM BST

PDB ID : 4NKA
Title : Crystal structure of human fibroblast growth factor receptor 1 kinase domain
in complex with pyrazolaminopyrimidine 2
Authors : Norman, R.A.; Klein, T.
Deposited on : 2013-11-12
Resolution : 2.19 Å(reported)

This is a Full wwPDB X-ray Structure Validation Report for a publicly released PDB entry.

We welcome your comments at validation@mail.wwpdb.org

A user guide is available at

<https://www.wwpdb.org/validation/2017/XrayValidationReportHelp>

with specific help available everywhere you see the ⓘ symbol.

The following versions of software and data (see [references ⓘ](#)) were used in the production of this report:

MolProbity : 4.02b-467
Mogul : 1.8.5 (274361), CSD as541be (2020)
Xtriage (Phenix) : 1.13
EDS : 2.13
buster-report : 1.1.7 (2018)
Percentile statistics : 20191225.v01 (using entries in the PDB archive December 25th 2019)
Refmac : 5.8.0158
CCP4 : 7.0.044 (Gargrove)
Ideal geometry (proteins) : Engh & Huber (2001)
Ideal geometry (DNA, RNA) : Parkinson et al. (1996)
Validation Pipeline (wwPDB-VP) : 2.13

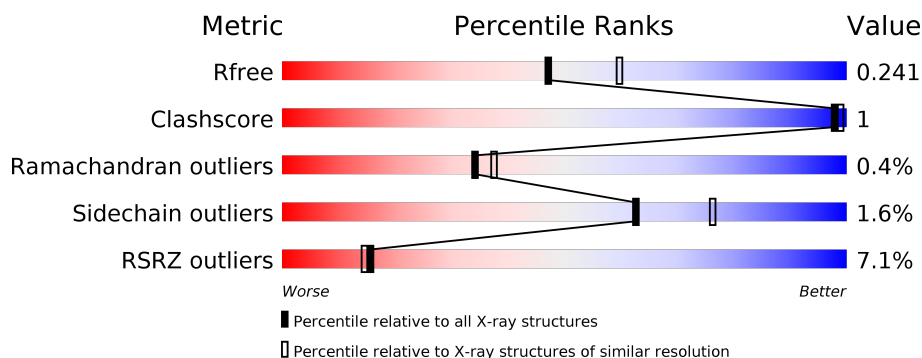
1 Overall quality at a glance

The following experimental techniques were used to determine the structure:

X-RAY DIFFRACTION

The reported resolution of this entry is 2.19 Å.

Percentile scores (ranging between 0-100) for global validation metrics of the entry are shown in the following graphic. The table shows the number of entries on which the scores are based.



Metric	Whole archive (#Entries)	Similar resolution (#Entries, resolution range(Å))
R_{free}	130704	4898 (2.20-2.20)
Clashscore	141614	5594 (2.20-2.20)
Ramachandran outliers	138981	5503 (2.20-2.20)
Sidechain outliers	138945	5504 (2.20-2.20)
RSRZ outliers	127900	4800 (2.20-2.20)

The table below summarises the geometric issues observed across the polymeric chains and their fit to the electron density. The red, orange, yellow and green segments on the lower bar indicate the fraction of residues that contain outliers for ≥ 3 , 2, 1 and 0 types of geometric quality criteria respectively. A grey segment represents the fraction of residues that are not modelled. The numeric value for each fraction is indicated below the corresponding segment, with a dot representing fractions $\leq 5\%$. The upper red bar (where present) indicates the fraction of residues that have poor fit to the electron density. The numeric value is given above the bar.

Mol	Chain	Length	Quality of chain
1	A	309	<div> <div>7%</div> <div> <div></div> <div>88%</div> <div>10%</div> </div> </div>
1	B	309	<div> <div>6%</div> <div> <div></div> <div>90%</div> <div>7%</div> </div> </div>

2 Entry composition [i](#)

There are 5 unique types of molecules in this entry. The entry contains 4645 atoms, of which 0 are hydrogens and 0 are deuteriums.

In the tables below, the ZeroOcc column contains the number of atoms modelled with zero occupancy, the AltConf column contains the number of residues with at least one atom in alternate conformation and the Trace column contains the number of residues modelled with at most 2 atoms.

- Molecule 1 is a protein called Fibroblast growth factor receptor 1.

Mol	Chain	Residues	Atoms					ZeroOcc	AltConf	Trace
1	A	279	Total	C	N	O	S	0	0	0
			2139	1363	362	397	17			
1	B	287	Total	C	N	O	S	0	0	0
			2199	1397	373	413	16			

There are 6 discrepancies between the modelled and reference sequences:

Chain	Residue	Modelled	Actual	Comment	Reference
A	457	GLY	-	EXPRESSION TAG	UNP P11362
A	488	ALA	CYS	ENGINEERED MUTATION	UNP P11362
A	584	SER	CYS	ENGINEERED MUTATION	UNP P11362
B	457	GLY	-	EXPRESSION TAG	UNP P11362
B	488	ALA	CYS	ENGINEERED MUTATION	UNP P11362
B	584	SER	CYS	ENGINEERED MUTATION	UNP P11362

- Molecule 2 is SULFATE ION (three-letter code: SO₄) (formula: O₄S).



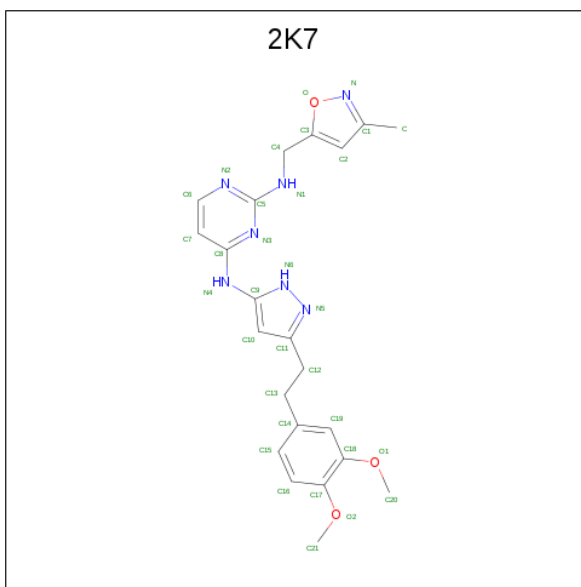
Mol	Chain	Residues	Atoms			ZeroOcc	AltConf
2	A	1	Total	O	S	0	0
			5	4	1		
2	A	1	Total	O	S	0	0
			5	4	1		
2	B	1	Total	O	S	0	0
			5	4	1		

- Molecule 3 is 1,2-ETHANEDIOL (three-letter code: EDO) (formula: C₂H₆O₂).



Mol	Chain	Residues	Atoms			ZeroOcc	AltConf
3	A	1	Total	C	O	0	0
			4	2	2		
3	A	1	Total	C	O	0	0
			4	2	2		
3	B	1	Total	C	O	0	0
			4	2	2		

- Molecule 4 is N 4 -{3-[2-(3,4-dimethoxyphenyl)ethyl]-1H-pyrazol-5-yl}-N 2 -[(3-methyl-1,2-oxazol-5-yl)methyl]pyrimidine-2,4-diamine (three-letter code: 2K7) (formula: C₂₂H₂₅N₇O₃).



Mol	Chain	Residues	Atoms				ZeroOcc	AltConf
4	A	1	Total 32	C 22	N 7	O 3	0	0
4	B	1	Total 32	C 22	N 7	O 3	0	0

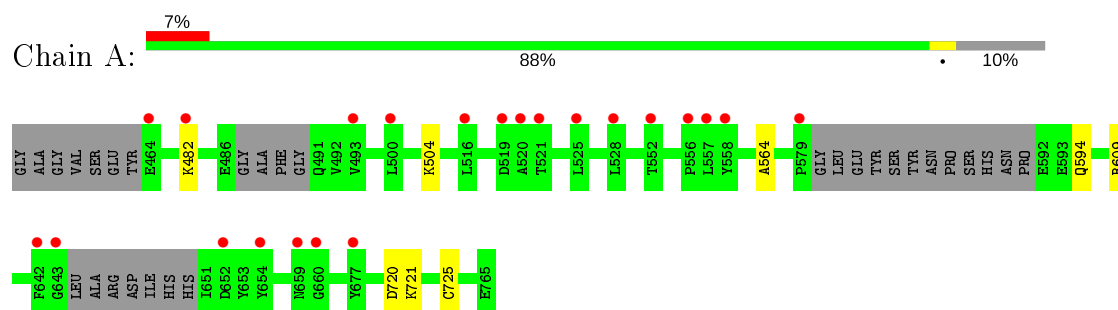
- Molecule 5 is water.

Mol	Chain	Residues	Atoms	ZeroOcc	AltConf
5	A	115	Total O 115 115	0	0
5	B	101	Total O 101 101	0	0

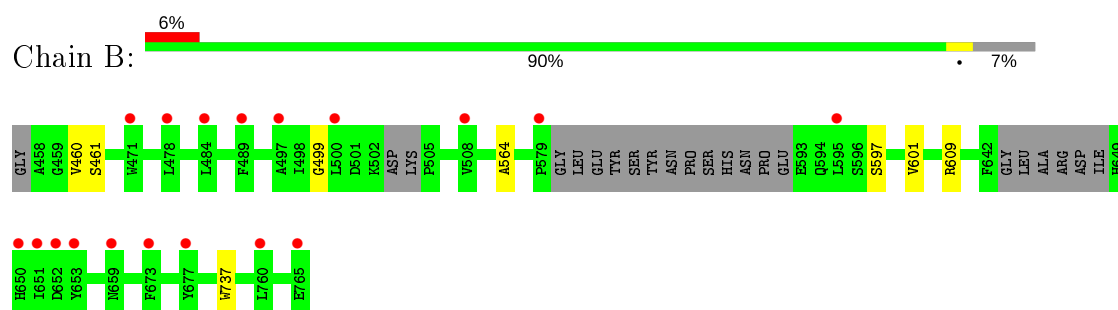
3 Residue-property plots [i](#)

These plots are drawn for all protein, RNA, DNA and oligosaccharide chains in the entry. The first graphic for a chain summarises the proportions of the various outlier classes displayed in the second graphic. The second graphic shows the sequence view annotated by issues in geometry and electron density. Residues are color-coded according to the number of geometric quality criteria for which they contain at least one outlier: green = 0, yellow = 1, orange = 2 and red = 3 or more. A red dot above a residue indicates a poor fit to the electron density ($RSRZ > 2$). Stretches of 2 or more consecutive residues without any outlier are shown as a green connector. Residues present in the sample, but not in the model, are shown in grey.

- Molecule 1: Fibroblast growth factor receptor 1



- Molecule 1: Fibroblast growth factor receptor 1



4 Data and refinement statistics

Property	Value	Source
Space group	C 1 2 1	Depositor
Cell constants a, b, c, α , β , γ	208.83Å 57.36Å 65.73Å 90.00° 107.68° 90.00°	Depositor
Resolution (Å)	46.42 – 2.19 46.42 – 2.19	Depositor EDS
% Data completeness (in resolution range)	98.6 (46.42-2.19) 98.6 (46.42-2.19)	Depositor EDS
R_{merge}	0.03	Depositor
R_{sym}	(Not available)	Depositor
$\langle I/\sigma(I) \rangle$ ¹	1.04 (at 2.18Å)	Xtriage
Refinement program	BUSTER 2.11.5	Depositor
R, R_{free}	0.198 , 0.228 0.207 , 0.241	Depositor DCC
R_{free} test set	1894 reflections (5.00%)	wwPDB-VP
Wilson B-factor (Å ²)	53.9	Xtriage
Anisotropy	0.447	Xtriage
Bulk solvent k_{sol} (e/Å ³), B_{sol} (Å ²)	0.33 , 67.6	EDS
L-test for twinning ²	$\langle L \rangle = 0.54$, $\langle L^2 \rangle = 0.38$	Xtriage
Estimated twinning fraction	0.001 for -h-2*1,-k,l	Xtriage
F_o, F_c correlation	0.96	EDS
Total number of atoms	4645	wwPDB-VP
Average B, all atoms (Å ²)	68.0	wwPDB-VP

Xtriage's analysis on translational NCS is as follows: *The largest off-origin peak in the Patterson function is 7.18% of the height of the origin peak. No significant pseudotranslation is detected.*

¹Intensities estimated from amplitudes.

²Theoretical values of $\langle |L| \rangle$, $\langle L^2 \rangle$ for acentric reflections are 0.5, 0.333 respectively for untwinned datasets, and 0.375, 0.2 for perfectly twinned datasets.

5 Model quality

5.1 Standard geometry

Bond lengths and bond angles in the following residue types are not validated in this section: 2K7, SO4, EDO

The Z score for a bond length (or angle) is the number of standard deviations the observed value is removed from the expected value. A bond length (or angle) with $|Z| > 5$ is considered an outlier worth inspection. RMSZ is the root-mean-square of all Z scores of the bond lengths (or angles).

Mol	Chain	Bond lengths		Bond angles	
		RMSZ	$\# Z > 5$	RMSZ	$\# Z > 5$
1	A	0.52	0/2182	0.61	0/2961
1	B	0.49	0/2243	0.61	0/3042
All	All	0.50	0/4425	0.61	0/6003

There are no bond length outliers.

There are no bond angle outliers.

There are no chirality outliers.

There are no planarity outliers.

5.2 Too-close contacts

In the following table, the Non-H and H(model) columns list the number of non-hydrogen atoms and hydrogen atoms in the chain respectively. The H(added) column lists the number of hydrogen atoms added and optimized by MolProbity. The Clashes column lists the number of clashes within the asymmetric unit, whereas Symm-Clashes lists symmetry related clashes.

Mol	Chain	Non-H	H(model)	H(added)	Clashes	Symm-Clashes
1	A	2139	0	2058	3	0
1	B	2199	0	2105	3	0
2	A	10	0	0	0	0
2	B	5	0	0	0	0
3	A	8	0	12	0	0
3	B	4	0	6	1	0
4	A	32	0	25	2	0
4	B	32	0	25	1	0
5	A	115	0	0	0	0
5	B	101	0	0	0	0
All	All	4645	0	4231	6	0

The all-atom clashscore is defined as the number of clashes found per 1000 atoms (including hydrogen atoms). The all-atom clashscore for this structure is 1.

All (6) close contacts within the same asymmetric unit are listed below, sorted by their clash magnitude.

Atom-1	Atom-2	Interatomic distance (Å)	Clash overlap (Å)
1:B:564:ALA:H	4:B:803:2K7:H2	1.20	0.89
1:A:564:ALA:H	4:A:805:2K7:H2	1.19	0.89
1:A:564:ALA:N	4:A:805:2K7:H2	2.00	0.46
1:A:721:LYS:HE3	1:A:725:CYS:O	2.17	0.44
1:B:737:TRP:CD2	3:B:802:EDO:H22	2.52	0.43
1:B:597:SER:O	1:B:601:VAL:HG23	2.20	0.41

There are no symmetry-related clashes.

5.3 Torsion angles [i](#)

5.3.1 Protein backbone [i](#)

In the following table, the Percentiles column shows the percent Ramachandran outliers of the chain as a percentile score with respect to all X-ray entries followed by that with respect to entries of similar resolution.

The Analysed column shows the number of residues for which the backbone conformation was analysed, and the total number of residues.

Mol	Chain	Analysed	Favoured	Allowed	Outliers	Percentiles	
1	A	271/309 (88%)	269 (99%)	2 (1%)	0	100	100
1	B	279/309 (90%)	274 (98%)	3 (1%)	2 (1%)	22	22
All	All	550/618 (89%)	543 (99%)	5 (1%)	2 (0%)	34	37

All (2) Ramachandran outliers are listed below:

Mol	Chain	Res	Type
1	B	460	VAL
1	B	499	GLY

5.3.2 Protein sidechains [i](#)

In the following table, the Percentiles column shows the percent sidechain outliers of the chain as a percentile score with respect to all X-ray entries followed by that with respect to entries of similar

resolution.

The Analysed column shows the number of residues for which the sidechain conformation was analysed, and the total number of residues.

Mol	Chain	Analysed	Rotameric	Outliers	Percentiles	
1	A	219/269 (81%)	214 (98%)	5 (2%)	50	63
1	B	224/269 (83%)	222 (99%)	2 (1%)	78	88
All	All	443/538 (82%)	436 (98%)	7 (2%)	62	76

All (7) residues with a non-rotameric sidechain are listed below:

Mol	Chain	Res	Type
1	A	482	LYS
1	A	504	LYS
1	A	594	GLN
1	A	609	ARG
1	A	720	ASP
1	B	461	SER
1	B	609	ARG

Some sidechains can be flipped to improve hydrogen bonding and reduce clashes. There are no such sidechains identified.

5.3.3 RNA [i](#)

There are no RNA molecules in this entry.

5.4 Non-standard residues in protein, DNA, RNA chains [i](#)

There are no non-standard protein/DNA/RNA residues in this entry.

5.5 Carbohydrates [i](#)

There are no monosaccharides in this entry.

5.6 Ligand geometry [i](#)

8 ligands are modelled in this entry.

In the following table, the Counts columns list the number of bonds (or angles) for which Mogul statistics could be retrieved, the number of bonds (or angles) that are observed in the model and

the number of bonds (or angles) that are defined in the Chemical Component Dictionary. The Link column lists molecule types, if any, to which the group is linked. The Z score for a bond length (or angle) is the number of standard deviations the observed value is removed from the expected value. A bond length (or angle) with $|Z| > 2$ is considered an outlier worth inspection. RMSZ is the root-mean-square of all Z scores of the bond lengths (or angles).

Mol	Type	Chain	Res	Link	Bond lengths			Bond angles		
					Counts	RMSZ	$\# Z > 2$	Counts	RMSZ	$\# Z > 2$
2	SO4	B	801	-	4,4,4	0.17	0	6,6,6	0.18	0
3	EDO	A	803	-	3,3,3	0.65	0	2,2,2	0.27	0
3	EDO	A	804	-	3,3,3	0.48	0	2,2,2	0.79	0
4	2K7	B	803	-	32,35,35	1.43	4 (12%)	36,47,47	0.88	2 (5%)
4	2K7	A	805	-	32,35,35	1.33	3 (9%)	36,47,47	0.93	1 (2%)
3	EDO	B	802	-	3,3,3	0.44	0	2,2,2	0.53	0
2	SO4	A	802	-	4,4,4	0.10	0	6,6,6	0.19	0
2	SO4	A	801	-	4,4,4	0.19	0	6,6,6	0.25	0

In the following table, the Chirals column lists the number of chiral outliers, the number of chiral centers analysed, the number of these observed in the model and the number defined in the Chemical Component Dictionary. Similar counts are reported in the Torsion and Rings columns. '-' means no outliers of that kind were identified.

Mol	Type	Chain	Res	Link	Chirals	Torsions	Rings
4	2K7	B	803	-	-	3/14/18/18	0/4/4/4
4	2K7	A	805	-	-	4/14/18/18	0/4/4/4
3	EDO	B	802	-	-	1/1/1/1	-
3	EDO	A	804	-	-	1/1/1/1	-
3	EDO	A	803	-	-	0/1/1/1	-

All (7) bond length outliers are listed below:

Mol	Chain	Res	Type	Atoms	Z	Observed(Å)	Ideal(Å)
4	A	805	2K7	C2-C3	-4.10	1.34	1.39
4	B	803	2K7	C4-C3	-3.85	1.47	1.51
4	B	803	2K7	C2-C3	-3.80	1.34	1.39
4	A	805	2K7	C4-C3	-2.84	1.48	1.51
4	B	803	2K7	O2-C17	2.50	1.41	1.37
4	B	803	2K7	C6-N2	2.31	1.39	1.34
4	A	805	2K7	C9-N4	2.27	1.42	1.38

All (3) bond angle outliers are listed below:

Mol	Chain	Res	Type	Atoms	Z	Observed(°)	Ideal(°)
4	B	803	2K7	C10-C11-N5	-3.23	106.89	111.44
4	A	805	2K7	C10-C11-N5	-2.96	107.27	111.44
4	B	803	2K7	C4-C3-C2	2.07	132.34	129.54

There are no chirality outliers.

All (9) torsion outliers are listed below:

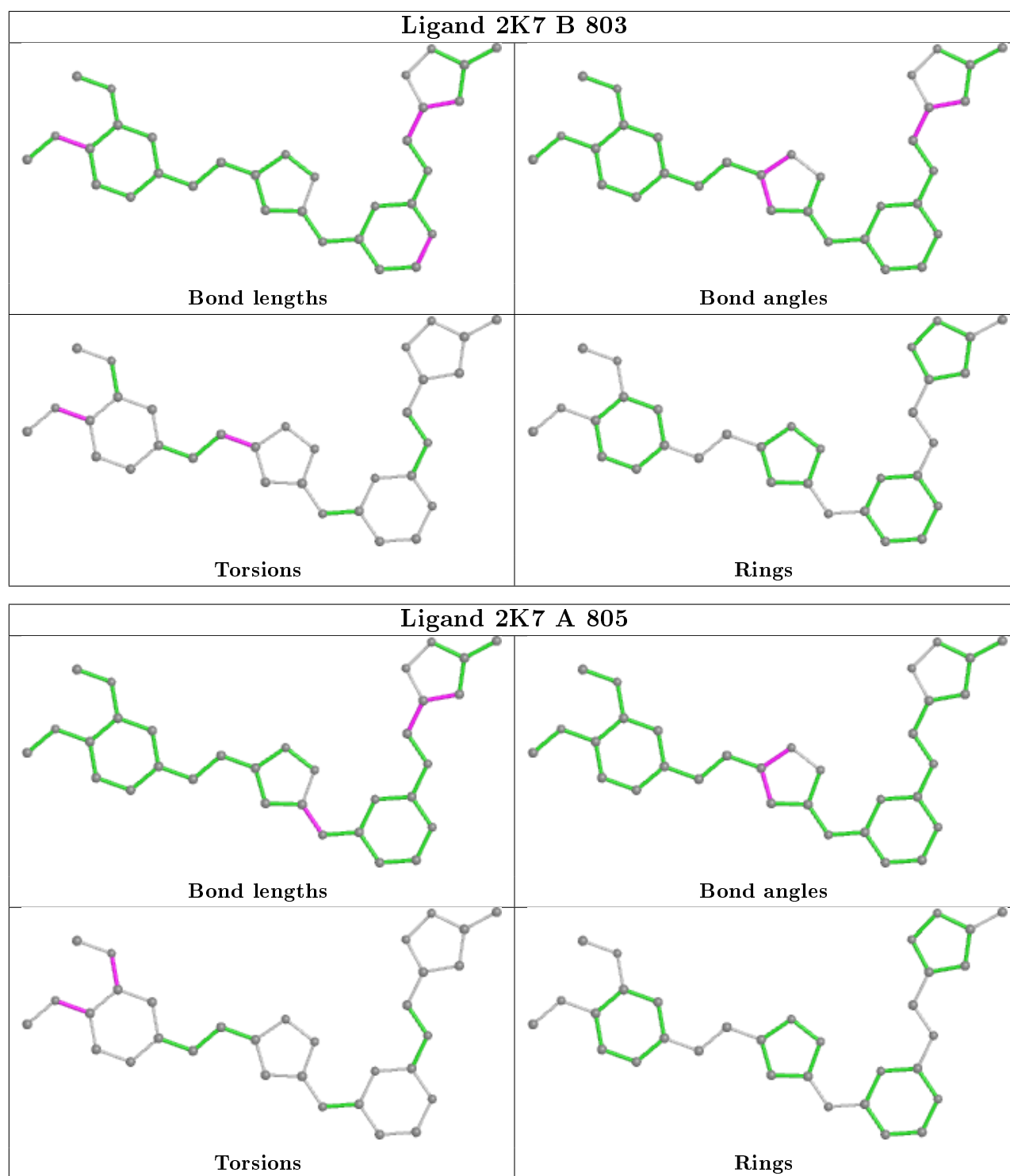
Mol	Chain	Res	Type	Atoms
4	B	803	2K7	N5-C11-C12-C13
4	A	805	2K7	C18-C17-O2-C21
4	A	805	2K7	C16-C17-O2-C21
4	A	805	2K7	C17-C18-O1-C20
4	B	803	2K7	C18-C17-O2-C21
4	A	805	2K7	C19-C18-O1-C20
4	B	803	2K7	C16-C17-O2-C21
3	A	804	EDO	O1-C1-C2-O2
3	B	802	EDO	O1-C1-C2-O2

There are no ring outliers.

3 monomers are involved in 4 short contacts:

Mol	Chain	Res	Type	Clashes	Symm-Clashes
4	B	803	2K7	1	0
4	A	805	2K7	2	0
3	B	802	EDO	1	0

The following is a two-dimensional graphical depiction of Mogul quality analysis of bond lengths, bond angles, torsion angles, and ring geometry for all instances of the Ligand of Interest. In addition, ligands with molecular weight > 250 and outliers as shown on the validation Tables will also be included. For torsion angles, if less than 5% of the Mogul distribution of torsion angles is within 10 degrees of the torsion angle in question, then that torsion angle is considered an outlier. Any bond that is central to one or more torsion angles identified as an outlier by Mogul will be highlighted in the graph. For rings, the root-mean-square deviation (RMSD) between the ring in question and similar rings identified by Mogul is calculated over all ring torsion angles. If the average RMSD is greater than 60 degrees and the minimal RMSD between the ring in question and any Mogul-identified rings is also greater than 60 degrees, then that ring is considered an outlier. The outliers are highlighted in purple. The color gray indicates Mogul did not find sufficient equivalents in the CSD to analyse the geometry.



5.7 Other polymers [\(i\)](#)

There are no such residues in this entry.

5.8 Polymer linkage issues ⓘ

There are no chain breaks in this entry.

6 Fit of model and data ⓘ

6.1 Protein, DNA and RNA chains ⓘ

In the following table, the column labelled ‘#RSRZ> 2’ contains the number (and percentage) of RSRZ outliers, followed by percent RSRZ outliers for the chain as percentile scores relative to all X-ray entries and entries of similar resolution. The OWAB column contains the minimum, median, 95th percentile and maximum values of the occupancy-weighted average B-factor per residue. The column labelled ‘Q< 0.9’ lists the number of (and percentage) of residues with an average occupancy less than 0.9.

Mol	Chain	Analysed	<RSRZ>	#RSRZ>2		OWAB(Å ²)	Q<0.9
1	A	279/309 (90%)	0.69	22 (7%)	12 11	42, 62, 105, 131	0
1	B	287/309 (92%)	0.45	18 (6%)	20 19	48, 67, 103, 129	0
All	All	566/618 (91%)	0.57	40 (7%)	16 14	42, 65, 105, 131	0

All (40) RSRZ outliers are listed below:

Mol	Chain	Res	Type	RSRZ
1	A	520	ALA	7.0
1	A	556	PRO	3.9
1	A	525	LEU	3.7
1	B	650	HIS	3.6
1	B	653	TYR	3.6
1	B	651	ILE	3.6
1	A	516	LEU	3.5
1	A	660	GLY	3.4
1	A	528	LEU	3.3
1	B	659	ASN	3.1
1	A	557	LEU	3.0
1	B	471	TRP	2.9
1	B	497	ALA	2.9
1	A	642	PHE	2.7
1	A	652	ASP	2.7
1	A	659	ASN	2.7
1	A	521	THR	2.6
1	A	493	VAL	2.5
1	A	519	ASP	2.5
1	A	654	TYR	2.4
1	A	552	THR	2.4
1	B	489	PHE	2.4
1	A	464	GLU	2.3
1	B	673	PHE	2.3

Continued on next page...

Continued from previous page...

Mol	Chain	Res	Type	RSRZ
1	A	643	GLY	2.3
1	A	558	TYR	2.2
1	A	500	LEU	2.2
1	B	765	GLU	2.2
1	A	579	PRO	2.2
1	B	760	LEU	2.2
1	B	677	TYR	2.2
1	B	484	LEU	2.1
1	A	677	TYR	2.1
1	A	482	LYS	2.1
1	B	478	LEU	2.1
1	B	579	PRO	2.0
1	B	508	VAL	2.0
1	B	500	LEU	2.0
1	B	652	ASP	2.0
1	B	595	LEU	2.0

6.2 Non-standard residues in protein, DNA, RNA chains [i](#)

There are no non-standard protein/DNA/RNA residues in this entry.

6.3 Carbohydrates [i](#)

There are no monosaccharides in this entry.

6.4 Ligands [i](#)

In the following table, the Atoms column lists the number of modelled atoms in the group and the number defined in the chemical component dictionary. The B-factors column lists the minimum, median, 95th percentile and maximum values of B factors of atoms in the group. The column labelled 'Q< 0.9' lists the number of atoms with occupancy less than 0.9.

Mol	Type	Chain	Res	Atoms	RSCC	RSR	B-factors(Å ²)	Q<0.9
2	SO4	A	801	5/5	0.64	0.40	193,194,194,194	0
2	SO4	A	802	5/5	0.88	0.14	115,116,117,117	0
2	SO4	B	801	5/5	0.93	0.20	105,106,109,109	0
4	2K7	A	805	32/32	0.94	0.14	49,62,86,87	0
3	EDO	B	802	4/4	0.94	0.18	66,67,68,68	0
4	2K7	B	803	32/32	0.95	0.15	48,56,69,73	0
3	EDO	A	804	4/4	0.96	0.23	54,56,56,57	0

Continued on next page...

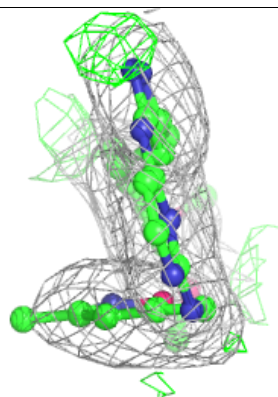
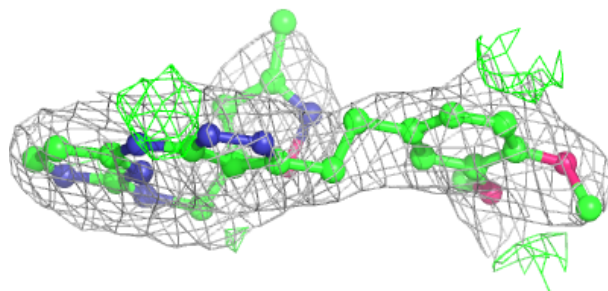
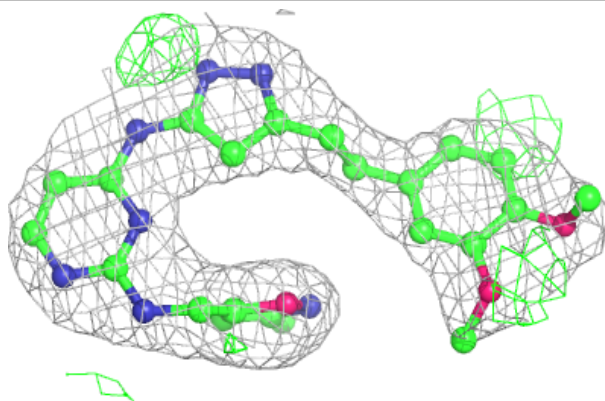
Continued from previous page...

Mol	Type	Chain	Res	Atoms	RSCC	RSR	B-factors(\AA^2)	Q<0.9
3	EDO	A	803	4/4	0.98	0.17	39,42,44,45	0

The following is a graphical depiction of the model fit to experimental electron density of all instances of the Ligand of Interest. In addition, ligands with molecular weight > 250 and outliers as shown on the geometry validation Tables will also be included. Each fit is shown from different orientation to approximate a three-dimensional view.

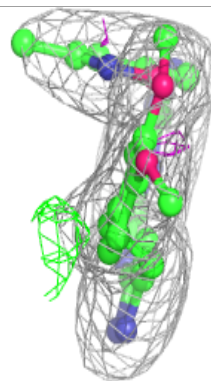
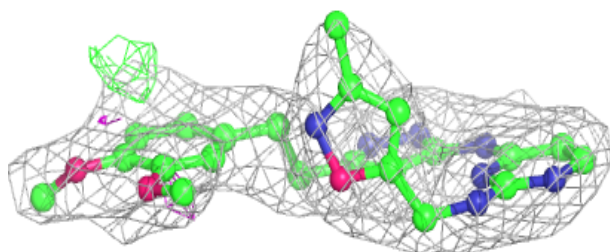
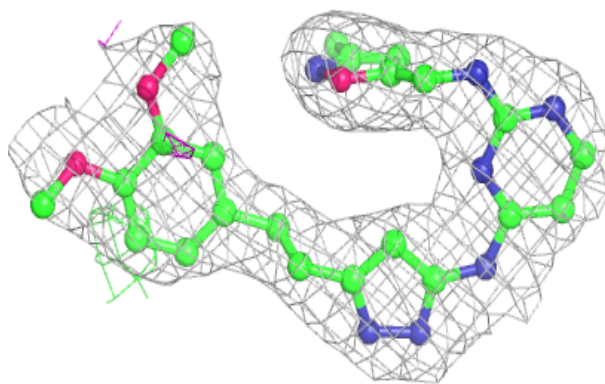
Electron density around 2K7 A 805:

2mF_o-DF_c (at 0.7 rmsd) in gray
mF_o-DF_c (at 3 rmsd) in purple (negative)
and green (positive)



Electron density around 2K7 B 803:

$2mF_o-DF_c$ (at 0.7 rmsd) in gray
 mF_o-DF_c (at 3 rmsd) in purple (negative)
and green (positive)



6.5 Other polymers [i](#)

There are no such residues in this entry.