



Full wwPDB X-ray Structure Validation Report ⓘ

May 26, 2020 – 04:28 am BST

PDB ID : 3NMV
Title : Crystal structure of pyrabactin-bound abscisic acid receptor PYL2 mutant A93F in complex with type 2C protein phosphatase ABI2
Authors : Zhou, X.E.; Melcher, K.; Ng, L.-M.; Soon, F.-F.; Xu, Y.; Suino-Powell, K.M.; Kovach, A.; Li, J.; Yong, E.-L.; Xu, H.E.
Deposited on : 2010-06-22
Resolution : 2.10 Å(reported)

This is a Full wwPDB X-ray Structure Validation Report for a publicly released PDB entry.

We welcome your comments at validation@mail.wwpdb.org

A user guide is available at

<https://www.wwpdb.org/validation/2017/XrayValidationReportHelp>

with specific help available everywhere you see the ⓘ symbol.

The following versions of software and data (see [references ⓘ](#)) were used in the production of this report:

MolProbity : 4.02b-467
Mogul : 1.8.5 (274361), CSD as541be (2020)
Xtriage (Phenix) : 1.13
EDS : 2.11
buster-report : 1.1.7 (2018)
Percentile statistics : 20191225.v01 (using entries in the PDB archive December 25th 2019)
Refmac : 5.8.0158
CCP4 : 7.0.044 (Gargrove)
Ideal geometry (proteins) : Engh & Huber (2001)
Ideal geometry (DNA, RNA) : Parkinson et al. (1996)
Validation Pipeline (wwPDB-VP) : 2.11

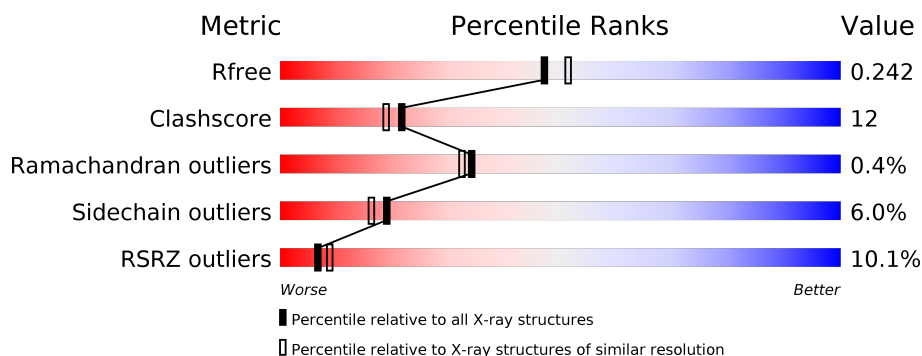
1 Overall quality at a glance

The following experimental techniques were used to determine the structure:

X-RAY DIFFRACTION

The reported resolution of this entry is 2.10 Å.

Percentile scores (ranging between 0-100) for global validation metrics of the entry are shown in the following graphic. The table shows the number of entries on which the scores are based.



Metric	Whole archive (#Entries)	Similar resolution (#Entries, resolution range(Å))
R_{free}	130704	5197 (2.10-2.10)
Clashscore	141614	5710 (2.10-2.10)
Ramachandran outliers	138981	5647 (2.10-2.10)
Sidechain outliers	138945	5648 (2.10-2.10)
RSRZ outliers	127900	5083 (2.10-2.10)

The table below summarises the geometric issues observed across the polymeric chains and their fit to the electron density. The red, orange, yellow and green segments on the lower bar indicate the fraction of residues that contain outliers for ≥ 3 , 2, 1 and 0 types of geometric quality criteria respectively. A grey segment represents the fraction of residues that are not modelled. The numeric value for each fraction is indicated below the corresponding segment, with a dot representing fractions $\leq 5\%$. The upper red bar (where present) indicates the fraction of residues that have poor fit to the electron density. The numeric value is given above the bar.

Mol	Chain	Length	Quality of chain
1	A	178	<div> <div>4%</div> <div>72%</div> <div>21%</div> <div>5% ..</div> </div>
2	B	324	<div> <div>12%</div> <div>68%</div> <div>17%</div> <div>• 14%</div> </div>

The following table lists non-polymeric compounds, carbohydrate monomers and non-standard residues in protein, DNA, RNA chains that are outliers for geometric or electron-density-fit criteria:

Mol	Type	Chain	Res	Chirality	Geometry	Clashes	Electron density
3	PYV	A	900	-	X	-	-

2 Entry composition

There are 5 unique types of molecules in this entry. The entry contains 3770 atoms, of which 0 are hydrogens and 0 are deuteriums.

In the tables below, the ZeroOcc column contains the number of atoms modelled with zero occupancy, the AltConf column contains the number of residues with at least one atom in alternate conformation and the Trace column contains the number of residues modelled with at most 2 atoms.

- Molecule 1 is a protein called Absciscic acid receptor PYL2.

Mol	Chain	Residues	Atoms					ZeroOcc	AltConf	Trace
1	A	176	Total	C	N	O	S	0	0	0
			1401	882	243	272	4			

There are 3 discrepancies between the modelled and reference sequences:

Chain	Residue	Modelled	Actual	Comment	Reference
A	12	GLY	-	EXPRESSION TAG	UNP O80992
A	13	SER	-	EXPRESSION TAG	UNP O80992
A	93	PHE	ALA	ENGINEERED MUTATION	UNP O80992

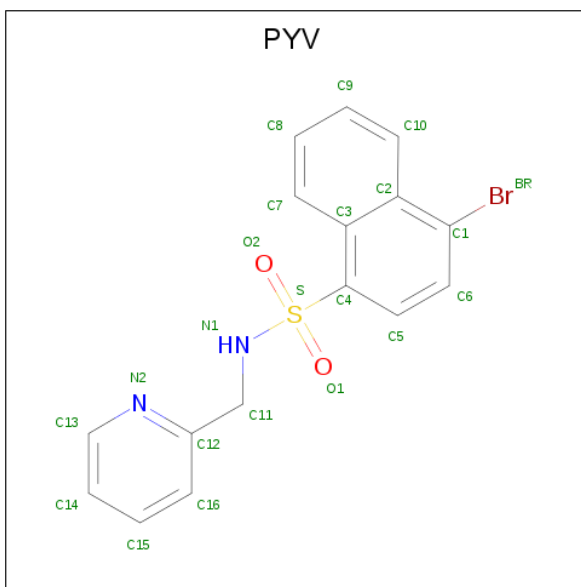
- Molecule 2 is a protein called Protein phosphatase 2C 77.

Mol	Chain	Residues	Atoms					ZeroOcc	AltConf	Trace
2	B	280	Total	C	N	O	S	0	0	0
			2173	1365	386	407	15			

There is a discrepancy between the modelled and reference sequences:

Chain	Residue	Modelled	Actual	Comment	Reference
B	100	GLY	-	EXPRESSION TAG	UNP O04719

- Molecule 3 is 4-bromo-N-(pyridin-2-ylmethyl)naphthalene-1-sulfonamide (three-letter code: PYV) (formula: C₁₆H₁₃BrN₂O₂S).



Mol	Chain	Residues	Atoms						ZeroOcc	AltConf
3	A	1	Total	Br	C	N	O	S	0	0
			22	1	16	2	2	1		

- Molecule 4 is MAGNESIUM ION (three-letter code: MG) (formula: Mg).

Mol	Chain	Residues	Atoms		ZeroOcc	AltConf
4	B	3	Total	Mg	0	0
			3	3		

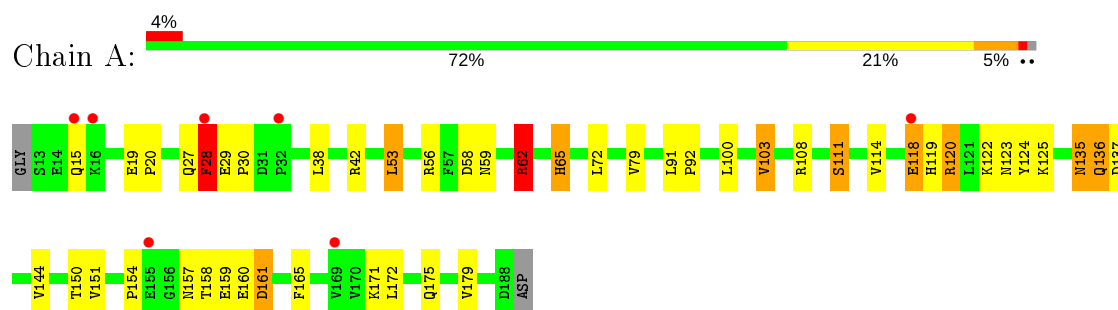
- Molecule 5 is water.

Mol	Chain	Residues	Atoms		ZeroOcc	AltConf
5	A	98	Total	O	0	0
			98	98		
5	B	73	Total	O	0	0
			73	73		

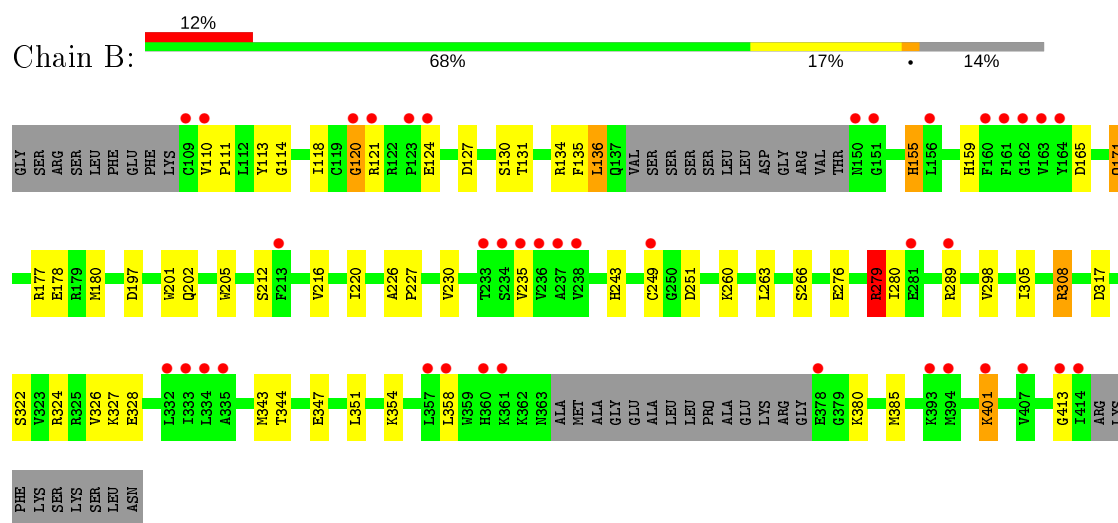
3 Residue-property plots [i](#)

These plots are drawn for all protein, RNA and DNA chains in the entry. The first graphic for a chain summarises the proportions of the various outlier classes displayed in the second graphic. The second graphic shows the sequence view annotated by issues in geometry and electron density. Residues are color-coded according to the number of geometric quality criteria for which they contain at least one outlier: green = 0, yellow = 1, orange = 2 and red = 3 or more. A red dot above a residue indicates a poor fit to the electron density ($RSRZ > 2$). Stretches of 2 or more consecutive residues without any outlier are shown as a green connector. Residues present in the sample, but not in the model, are shown in grey.

- Molecule 1: Absciscic acid receptor PYL2



- Molecule 2: Protein phosphatase 2C 77



4 Data and refinement statistics

Property	Value	Source
Space group	P 21 21 21	Depositor
Cell constants a, b, c, α , β , γ	62.13 Å 97.59 Å 134.50 Å 90.00° 90.00° 90.00°	Depositor
Resolution (Å)	29.60 – 2.10 29.60 – 2.10	Depositor EDS
% Data completeness (in resolution range)	99.9 (29.60-2.10) 99.9 (29.60-2.10)	Depositor EDS
R_{merge}	0.10	Depositor
R_{sym}	(Not available)	Depositor
$\langle I/\sigma(I) \rangle$ ¹	3.40 (at 2.10 Å)	Xtriage
Refinement program	REFMAC 5.5.0072	Depositor
R, R_{free}	0.193 , 0.223 0.225 , 0.242	Depositor DCC
R_{free} test set	3471 reflections (7.20%)	wwPDB-VP
Wilson B-factor (Å ²)	33.6	Xtriage
Anisotropy	0.792	Xtriage
Bulk solvent k_{sol} (e/Å ³), B_{sol} (Å ²)	0.38 , 62.3	EDS
L-test for twinning ²	$\langle L \rangle = 0.50$, $\langle L^2 \rangle = 0.33$	Xtriage
Estimated twinning fraction	No twinning to report.	Xtriage
F_o, F_c correlation	0.94	EDS
Total number of atoms	3770	wwPDB-VP
Average B, all atoms (Å ²)	46.0	wwPDB-VP

Xtriage's analysis on translational NCS is as follows: *The largest off-origin peak in the Patterson function is 5.93% of the height of the origin peak. No significant pseudotranslation is detected.*

¹Intensities estimated from amplitudes.

²Theoretical values of $\langle |L| \rangle$, $\langle L^2 \rangle$ for acentric reflections are 0.5, 0.333 respectively for untwinned datasets, and 0.375, 0.2 for perfectly twinned datasets.

5 Model quality [i](#)

5.1 Standard geometry [i](#)

Bond lengths and bond angles in the following residue types are not validated in this section: MG, PYV

The Z score for a bond length (or angle) is the number of standard deviations the observed value is removed from the expected value. A bond length (or angle) with $|Z| > 5$ is considered an outlier worth inspection. RMSZ is the root-mean-square of all Z scores of the bond lengths (or angles).

Mol	Chain	Bond lengths		Bond angles	
		RMSZ	# $ Z > 5$	RMSZ	# $ Z > 5$
1	A	1.32	7/1430 (0.5%)	1.08	9/1942 (0.5%)
2	B	1.12	4/2216 (0.2%)	0.99	9/2995 (0.3%)
All	All	1.20	11/3646 (0.3%)	1.03	18/4937 (0.4%)

All (11) bond length outliers are listed below:

Mol	Chain	Res	Type	Atoms	Z	Observed(Å)	Ideal(Å)
1	A	179	VAL	CB-CG2	7.19	1.68	1.52
2	B	279	ARG	CG-CD	6.70	1.68	1.51
2	B	235	VAL	CB-CG2	6.19	1.65	1.52
2	B	322	SER	CB-OG	-5.95	1.34	1.42
2	B	178	GLU	CB-CG	5.91	1.63	1.52
1	A	103	VAL	CB-CG1	-5.65	1.41	1.52
1	A	118	GLU	CG-CD	5.37	1.60	1.51
1	A	144	VAL	CB-CG2	5.18	1.63	1.52
1	A	111	SER	CB-OG	-5.14	1.35	1.42
1	A	28	PHE	CD1-CE1	5.08	1.49	1.39
1	A	151	VAL	CB-CG1	5.03	1.63	1.52

All (18) bond angle outliers are listed below:

Mol	Chain	Res	Type	Atoms	Z	Observed(°)	Ideal(°)
1	A	53	LEU	CB-CG-CD1	9.90	127.83	111.00
1	A	108	ARG	NE-CZ-NH2	-7.66	116.47	120.30
2	B	251	ASP	CB-CG-OD2	-7.09	111.91	118.30
1	A	42	ARG	NE-CZ-NH2	-7.03	116.78	120.30
2	B	308	ARG	NE-CZ-NH2	6.52	123.56	120.30
2	B	308	ARG	NE-CZ-NH1	-6.51	117.05	120.30
2	B	197	ASP	C-N-CA	-6.35	108.96	122.30
1	A	120	ARG	NE-CZ-NH1	6.26	123.43	120.30

Continued on next page...

Continued from previous page...

Mol	Chain	Res	Type	Atoms	Z	Observed(°)	Ideal(°)
2	B	177	ARG	NE-CZ-NH1	6.00	123.30	120.30
1	A	62	ARG	NE-CZ-NH2	-5.98	117.31	120.30
2	B	251	ASP	CB-CG-OD1	5.96	123.66	118.30
1	A	58	ASP	CB-CG-OD1	5.95	123.65	118.30
1	A	103	VAL	CG1-CB-CG2	-5.95	101.38	110.90
2	B	127	ASP	CB-CG-OD1	5.84	123.55	118.30
1	A	161	ASP	CB-CG-OD2	-5.66	113.20	118.30
1	A	108	ARG	CG-CD-NE	-5.38	100.50	111.80
2	B	324	ARG	NE-CZ-NH1	5.29	122.94	120.30
2	B	308	ARG	CB-CA-C	-5.19	100.02	110.40

There are no chirality outliers.

There are no planarity outliers.

5.2 Too-close contacts ⓘ

In the following table, the Non-H and H(model) columns list the number of non-hydrogen atoms and hydrogen atoms in the chain respectively. The H(added) column lists the number of hydrogen atoms added and optimized by MolProbity. The Clashes column lists the number of clashes within the asymmetric unit, whereas Symm-Clashes lists symmetry related clashes.

Mol	Chain	Non-H	H(model)	H(added)	Clashes	Symm-Clashes
1	A	1401	0	1386	38	1
2	B	2173	0	2156	47	1
3	A	22	0	13	3	0
4	B	3	0	0	0	0
5	A	98	0	0	3	0
5	B	73	0	0	11	0
All	All	3770	0	3555	85	1

The all-atom clashscore is defined as the number of clashes found per 1000 atoms (including hydrogen atoms). The all-atom clashscore for this structure is 12.

All (85) close contacts within the same asymmetric unit are listed below, sorted by their clash magnitude.

Atom-1	Atom-2	Interatomic distance (Å)	Clash overlap (Å)
2:B:113:TYR:CE2	2:B:131:THR:HG21	1.63	1.31
2:B:380:LYS:HD3	2:B:385:MET:HE1	1.51	0.92
2:B:343:MET:SD	5:B:42:HOH:O	2.30	0.90
2:B:220:ILE:HD11	2:B:305:ILE:HG22	1.54	0.88

Continued on next page...

Continued from previous page...

Atom-1	Atom-2	Interatomic distance (Å)	Clash overlap (Å)
2:B:113:TYR:CZ	2:B:131:THR:HG21	2.10	0.86
1:A:158:THR:HG23	1:A:161:ASP:H	1.42	0.82
2:B:121:ARG:N	5:B:95:HOH:O	2.15	0.79
2:B:279:ARG:HH21	2:B:279:ARG:CG	2.02	0.73
2:B:279:ARG:HH21	2:B:279:ARG:HG3	1.52	0.73
2:B:113:TYR:CE2	2:B:131:THR:CG2	2.58	0.72
2:B:171:GLN:HE21	2:B:171:GLN:H	1.38	0.72
1:A:59:ASN:OD1	1:A:62:ARG:HD2	1.90	0.71
1:A:65:HIS:H	1:A:65:HIS:CD2	2.07	0.70
1:A:136:GLN:H	1:A:136:GLN:HE21	1.38	0.70
1:A:135:ASN:HD22	1:A:135:ASN:C	1.94	0.70
2:B:134:ARG:H	2:B:159:HIS:HD2	1.41	0.67
1:A:120:ARG:HH22	1:A:157:ASN:HD22	1.43	0.67
2:B:220:ILE:HD11	2:B:305:ILE:CG2	2.24	0.67
1:A:158:THR:HG22	1:A:161:ASP:CG	2.15	0.66
2:B:120:GLY:O	5:B:17:HOH:O	2.12	0.66
2:B:113:TYR:CZ	2:B:131:THR:CG2	2.78	0.66
3:A:900:PYV:H11	5:A:7:HOH:O	1.95	0.65
2:B:227:PRO:O	2:B:230:VAL:HG12	1.96	0.65
1:A:91:LEU:HD13	2:B:298:VAL:HG13	1.78	0.65
2:B:113:TYR:CD2	2:B:131:THR:HG21	2.30	0.64
2:B:289:ARG:NH1	5:B:446:HOH:O	2.29	0.64
1:A:120:ARG:HH22	1:A:157:ASN:ND2	1.96	0.63
1:A:65:HIS:H	1:A:65:HIS:HD2	1.47	0.61
3:A:900:PYV:H7	3:A:900:PYV:O2	2.01	0.60
1:A:150:THR:HG23	5:A:218:HOH:O	2.01	0.60
1:A:136:GLN:H	1:A:136:GLN:NE2	2.00	0.59
2:B:120:GLY:CA	5:B:95:HOH:O	2.52	0.58
2:B:202:GLN:HE21	2:B:243:HIS:CE1	2.21	0.58
2:B:308:ARG:NH1	5:B:54:HOH:O	2.37	0.57
2:B:380:LYS:HD3	2:B:385:MET:CE	2.31	0.56
1:A:65:HIS:N	1:A:65:HIS:CD2	2.71	0.56
2:B:226:ALA:O	2:B:308:ARG:NH2	2.39	0.55
2:B:212:SER:O	2:B:216:VAL:HG12	2.06	0.55
2:B:180:MET:HE1	2:B:212:SER:C	2.27	0.54
2:B:155:HIS:HE1	2:B:201:TRP:HE1	1.55	0.54
2:B:279:ARG:CG	2:B:279:ARG:NH2	2.70	0.54
2:B:344:THR:OG1	2:B:347:GLU:HG2	2.08	0.53
1:A:19:GLU:HB2	1:A:20:PRO:HD3	1.92	0.52
2:B:110:VAL:HG13	2:B:111:PRO:HD2	1.91	0.52
1:A:91:LEU:CD1	2:B:298:VAL:HG13	2.39	0.52

Continued on next page...

Continued from previous page...

Atom-1	Atom-2	Interatomic distance (Å)	Clash overlap (Å)
1:A:135:ASN:HD21	1:A:137:ASP:HB3	1.75	0.52
2:B:120:GLY:C	5:B:95:HOH:O	2.47	0.52
1:A:65:HIS:NE2	1:A:172:LEU:HD23	2.26	0.51
1:A:79:VAL:HG23	1:A:103:VAL:HG22	1.94	0.50
1:A:59:ASN:OD1	1:A:62:ARG:CD	2.58	0.50
2:B:266:SER:HA	5:B:435:HOH:O	2.11	0.50
1:A:79:VAL:CG2	1:A:103:VAL:HG22	2.42	0.50
1:A:122:LYS:HD3	1:A:123:ASN:N	2.26	0.49
1:A:91:LEU:HB3	1:A:92:PRO:HD2	1.95	0.49
1:A:165:PHE:CZ	3:A:900:PYV:BR	3.21	0.48
1:A:120:ARG:O	1:A:154:PRO:HG3	2.13	0.48
2:B:171:GLN:N	2:B:171:GLN:HE21	2.07	0.48
1:A:171:LYS:HD2	5:A:215:HOH:O	2.12	0.48
1:A:135:ASN:ND2	1:A:135:ASN:C	2.66	0.48
2:B:276:GLU:O	2:B:280:ILE:HG12	2.14	0.47
2:B:120:GLY:N	5:B:95:HOH:O	2.47	0.47
2:B:155:HIS:CE1	2:B:205:TRP:HE1	2.33	0.47
2:B:114:GLY:HA2	2:B:385:MET:HE2	1.97	0.46
2:B:226:ALA:HB1	2:B:230:VAL:HG11	1.97	0.45
1:A:120:ARG:HH12	1:A:157:ASN:ND2	2.14	0.45
2:B:155:HIS:CE1	2:B:201:TRP:HE1	2.34	0.44
1:A:135:ASN:HD22	1:A:137:ASP:H	1.66	0.44
1:A:29:GLU:OE1	1:A:30:PRO:HD2	2.17	0.44
2:B:165:ASP:OD1	5:B:11:HOH:O	2.21	0.43
1:A:114:VAL:CG2	1:A:124:TYR:HB3	2.48	0.43
1:A:15:GLN:O	1:A:19:GLU:HG3	2.18	0.43
2:B:326:VAL:HG12	2:B:327:LYS:N	2.33	0.43
2:B:135:PHE:CE1	2:B:136:LEU:HD13	2.54	0.43
2:B:124:GLU:HB2	5:B:41:HOH:O	2.18	0.42
1:A:118:GLU:O	1:A:118:GLU:HG2	2.20	0.42
2:B:347:GLU:O	2:B:351:LEU:HG	2.20	0.41
1:A:135:ASN:ND2	1:A:137:ASP:H	2.17	0.41
1:A:125:LYS:HB2	1:A:150:THR:HG22	2.01	0.41
2:B:354:LYS:O	2:B:358:LEU:HG	2.21	0.41
1:A:120:ARG:HH12	1:A:157:ASN:HD21	1.69	0.41
2:B:401:LYS:HD3	2:B:401:LYS:H	1.85	0.41
2:B:134:ARG:N	2:B:159:HIS:HD2	2.14	0.41
1:A:171:LYS:HG3	1:A:175:GLN:HE21	1.85	0.40
1:A:56:ARG:HD2	1:A:56:ARG:HA	1.94	0.40
1:A:114:VAL:HG11	1:A:119:HIS:CE1	2.57	0.40

All (1) symmetry-related close contacts are listed below. The label for Atom-2 includes the sym-

metry operator and encoded unit-cell translations to be applied.

Atom-1	Atom-2	Interatomic distance (Å)	Clash overlap (Å)
1:A:28:PHE:O	2:B:260:LYS:NZ[2_555]	1.95	0.25

5.3 Torsion angles [i](#)

5.3.1 Protein backbone [i](#)

In the following table, the Percentiles column shows the percent Ramachandran outliers of the chain as a percentile score with respect to all X-ray entries followed by that with respect to entries of similar resolution.

The Analysed column shows the number of residues for which the backbone conformation was analysed, and the total number of residues.

Mol	Chain	Analysed	Favoured	Allowed	Outliers	Percentiles	
1	A	174/178 (98%)	169 (97%)	5 (3%)	0	100	100
2	B	274/324 (85%)	262 (96%)	10 (4%)	2 (1%)	22	18
All	All	448/502 (89%)	431 (96%)	15 (3%)	2 (0%)	34	32

All (2) Ramachandran outliers are listed below:

Mol	Chain	Res	Type
2	B	120	GLY
2	B	413	GLY

5.3.2 Protein sidechains [i](#)

In the following table, the Percentiles column shows the percent sidechain outliers of the chain as a percentile score with respect to all X-ray entries followed by that with respect to entries of similar resolution.

The Analysed column shows the number of residues for which the sidechain conformation was analysed, and the total number of residues.

Mol	Chain	Analysed	Rotameric	Outliers	Percentiles	
1	A	162/163 (99%)	149 (92%)	13 (8%)	12	8
2	B	237/273 (87%)	226 (95%)	11 (5%)	27	26
All	All	399/436 (92%)	375 (94%)	24 (6%)	19	16

All (24) residues with a non-rotameric sidechain are listed below:

Mol	Chain	Res	Type
1	A	27	GLN
1	A	28	PHE
1	A	38	LEU
1	A	53	LEU
1	A	62	ARG
1	A	65	HIS
1	A	72	LEU
1	A	100	LEU
1	A	111	SER
1	A	135	ASN
1	A	136	GLN
1	A	159	GLU
1	A	160	GLU
2	B	118	ILE
2	B	130	SER
2	B	136	LEU
2	B	155	HIS
2	B	171	GLN
2	B	249	CYS
2	B	263	LEU
2	B	279	ARG
2	B	317	ASP
2	B	328	GLU
2	B	401	LYS

Some sidechains can be flipped to improve hydrogen bonding and reduce clashes. All (13) such sidechains are listed below:

Mol	Chain	Res	Type
1	A	65	HIS
1	A	123	ASN
1	A	135	ASN
1	A	136	GLN
1	A	157	ASN
1	A	175	GLN
2	B	155	HIS
2	B	159	HIS
2	B	171	GLN
2	B	181	HIS
2	B	202	GLN
2	B	243	HIS
2	B	397	GLN

5.3.3 RNA ⓘ

There are no RNA molecules in this entry.

5.4 Non-standard residues in protein, DNA, RNA chains ⓘ

There are no non-standard protein/DNA/RNA residues in this entry.

5.5 Carbohydrates ⓘ

There are no carbohydrates in this entry.

5.6 Ligand geometry ⓘ

Of 4 ligands modelled in this entry, 3 are monoatomic - leaving 1 for Mogul analysis.

In the following table, the Counts columns list the number of bonds (or angles) for which Mogul statistics could be retrieved, the number of bonds (or angles) that are observed in the model and the number of bonds (or angles) that are defined in the Chemical Component Dictionary. The Link column lists molecule types, if any, to which the group is linked. The Z score for a bond length (or angle) is the number of standard deviations the observed value is removed from the expected value. A bond length (or angle) with $|Z| > 2$ is considered an outlier worth inspection. RMSZ is the root-mean-square of all Z scores of the bond lengths (or angles).

Mol	Type	Chain	Res	Link	Bond lengths			Bond angles		
					Counts	RMSZ	$\# Z > 2$	Counts	RMSZ	$\# Z > 2$
3	PYV	A	900	-	24,24,24	4.11	10 (41%)	34,34,34	4.09	17 (50%)

In the following table, the Chirals column lists the number of chiral outliers, the number of chiral centers analysed, the number of these observed in the model and the number defined in the Chemical Component Dictionary. Similar counts are reported in the Torsion and Rings columns. '-' means no outliers of that kind were identified.

Mol	Type	Chain	Res	Link	Chirals	Torsions	Rings
3	PYV	A	900	-	-	6/12/12/12	0/3/3/3

All (10) bond length outliers are listed below:

Mol	Chain	Res	Type	Atoms	Z	Observed(Å)	Ideal(Å)
3	A	900	PYV	BR-C1	-13.48	1.51	1.90
3	A	900	PYV	C4-S	-9.86	1.67	1.77
3	A	900	PYV	C3-C2	5.15	1.53	1.43

Continued on next page...

Continued from previous page...

Mol	Chain	Res	Type	Atoms	Z	Observed(Å)	Ideal(Å)
3	A	900	PYV	C11-N1	-4.61	1.39	1.47
3	A	900	PYV	C5-C4	4.56	1.43	1.37
3	A	900	PYV	C4-C3	4.53	1.50	1.43
3	A	900	PYV	C6-C1	3.35	1.44	1.36
3	A	900	PYV	C6-C5	2.85	1.43	1.38
3	A	900	PYV	S-N1	-2.70	1.57	1.61
3	A	900	PYV	C10-C2	-2.13	1.37	1.42

All (17) bond angle outliers are listed below:

Mol	Chain	Res	Type	Atoms	Z	Observed(°)	Ideal(°)
3	A	900	PYV	C5-C4-C3	-9.85	111.13	121.00
3	A	900	PYV	C6-C1-C2	-9.54	107.25	121.95
3	A	900	PYV	C1-C2-C3	9.17	127.38	117.53
3	A	900	PYV	O1-S-N1	-8.44	93.87	107.04
3	A	900	PYV	C5-C4-S	6.37	124.54	116.98
3	A	900	PYV	O2-S-O1	-6.23	111.89	119.55
3	A	900	PYV	C5-C6-C1	4.34	128.84	120.73
3	A	900	PYV	BR-C1-C2	3.99	127.82	119.67
3	A	900	PYV	O1-S-C4	3.96	115.07	108.08
3	A	900	PYV	O2-S-N1	3.93	113.19	107.04
3	A	900	PYV	C7-C3-C4	-3.33	119.23	123.60
3	A	900	PYV	C10-C2-C1	-3.12	117.43	125.06
3	A	900	PYV	C4-S-N1	2.95	112.18	106.62
3	A	900	PYV	C6-C5-C4	2.92	125.18	121.66
3	A	900	PYV	C10-C2-C3	-2.75	115.03	118.45
3	A	900	PYV	BR-C1-C6	2.56	124.54	116.98
3	A	900	PYV	C3-C4-S	2.26	124.28	121.58

There are no chirality outliers.

All (6) torsion outliers are listed below:

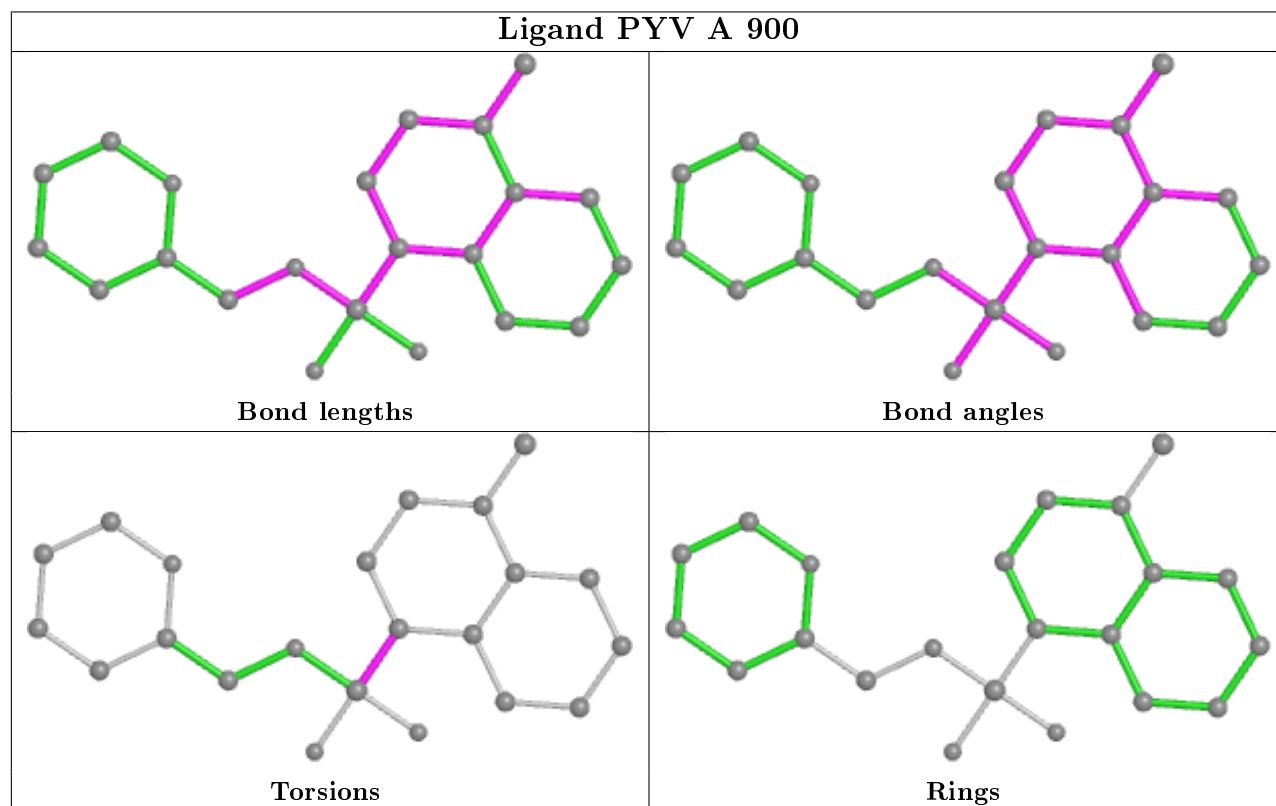
Mol	Chain	Res	Type	Atoms
3	A	900	PYV	C3-C4-S-N1
3	A	900	PYV	C5-C4-S-N1
3	A	900	PYV	C5-C4-S-O1
3	A	900	PYV	C5-C4-S-O2
3	A	900	PYV	C3-C4-S-O1
3	A	900	PYV	C3-C4-S-O2

There are no ring outliers.

1 monomer is involved in 3 short contacts:

Mol	Chain	Res	Type	Clashes	Symm-Clashes
3	A	900	PYV	3	0

The following is a two-dimensional graphical depiction of Mogul quality analysis of bond lengths, bond angles, torsion angles, and ring geometry for all instances of the Ligand of Interest. In addition, ligands with molecular weight > 250 and outliers as shown on the validation Tables will also be included. For torsion angles, if less than 5% of the Mogul distribution of torsion angles is within 10 degrees of the torsion angle in question, then that torsion angle is considered an outlier. Any bond that is central to one or more torsion angles identified as an outlier by Mogul will be highlighted in the graph. For rings, the root-mean-square deviation (RMSD) between the ring in question and similar rings identified by Mogul is calculated over all ring torsion angles. If the average RMSD is greater than 60 degrees and the minimal RMSD between the ring in question and any Mogul-identified rings is also greater than 60 degrees, then that ring is considered an outlier. The outliers are highlighted in purple. The color gray indicates Mogul did not find sufficient equivalents in the CSD to analyse the geometry.



5.7 Other polymers [i](#)

There are no such residues in this entry.

5.8 Polymer linkage issues ⓘ

There are no chain breaks in this entry.

6 Fit of model and data

6.1 Protein, DNA and RNA chains

In the following table, the column labelled ‘#RSRZ> 2’ contains the number (and percentage) of RSRZ outliers, followed by percent RSRZ outliers for the chain as percentile scores relative to all X-ray entries and entries of similar resolution. The OWAB column contains the minimum, median, 95th percentile and maximum values of the occupancy-weighted average B-factor per residue. The column labelled ‘Q< 0.9’ lists the number of (and percentage) of residues with an average occupancy less than 0.9.

Mol	Chain	Analysed	<RSRZ>	#RSRZ>2	OWAB(Å ²)	Q<0.9
1	A	176/178 (98%)	-0.05	7 (3%) 38 44	22, 33, 61, 75	0
2	B	280/324 (86%)	0.66	39 (13%) 2 3	28, 47, 86, 123	0
All	All	456/502 (90%)	0.39	46 (10%) 7 9	22, 41, 81, 123	0

All (46) RSRZ outliers are listed below:

Mol	Chain	Res	Type	RSRZ
2	B	110	VAL	7.6
2	B	109	CYS	7.3
2	B	150	ASN	6.1
2	B	378	GLU	5.9
2	B	235	VAL	4.9
2	B	236	VAL	4.9
1	A	28	PHE	4.8
2	B	414	ILE	4.8
2	B	334	LEU	4.7
2	B	358	LEU	4.0
2	B	123	PRO	3.7
2	B	120	GLY	3.6
2	B	121	ARG	3.5
2	B	413	GLY	3.5
2	B	401	LYS	3.2
2	B	281	GLU	3.2
1	A	16	LYS	3.0
2	B	237	ALA	3.0
2	B	357	LEU	2.9
2	B	407	VAL	2.9
2	B	161	PHE	2.9
2	B	335	ALA	2.8
2	B	361	LYS	2.8
2	B	156	LEU	2.8

Continued on next page...

Continued from previous page...

Mol	Chain	Res	Type	RSRZ
2	B	393	LYS	2.7
2	B	332	LEU	2.7
1	A	155	GLU	2.7
2	B	163	VAL	2.7
1	A	118	GLU	2.7
1	A	15	GLN	2.6
2	B	238	VAL	2.5
2	B	164	TYR	2.5
2	B	213	PHE	2.5
2	B	160	PHE	2.4
2	B	151	GLY	2.4
2	B	249	CYS	2.4
2	B	124	GLU	2.4
2	B	333	ILE	2.3
2	B	234	SER	2.3
2	B	289	ARG	2.1
2	B	162	GLY	2.1
2	B	233	THR	2.1
1	A	32	PRO	2.0
2	B	394	MET	2.0
2	B	360	HIS	2.0
1	A	169	VAL	2.0

6.2 Non-standard residues in protein, DNA, RNA chains [i](#)

There are no non-standard protein/DNA/RNA residues in this entry.

6.3 Carbohydrates [i](#)

There are no carbohydrates in this entry.

6.4 Ligands [i](#)

In the following table, the Atoms column lists the number of modelled atoms in the group and the number defined in the chemical component dictionary. The B-factors column lists the minimum, median, 95th percentile and maximum values of B factors of atoms in the group. The column labelled 'Q< 0.9' lists the number of atoms with occupancy less than 0.9.

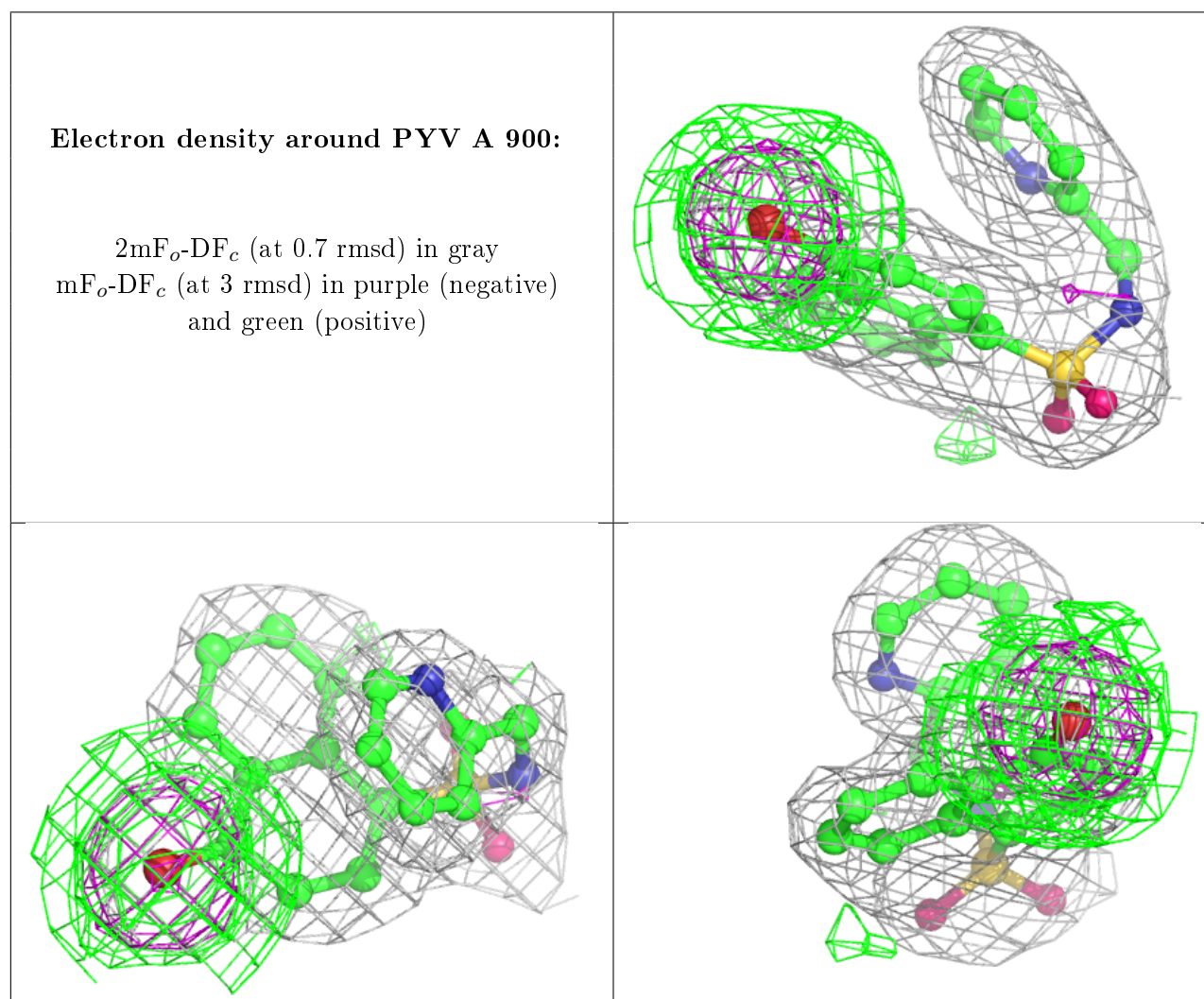
Mol	Type	Chain	Res	Atoms	RSCC	RSR	B-factors(\AA^2)	Q<0.9
3	PYV	A	900	22/22	0.91	0.23	6,39,48,53	0

Continued on next page...

Continued from previous page...

Mol	Type	Chain	Res	Atoms	RSCC	RSR	B-factors(\AA^2)	Q<0.9
4	MG	B	424	1/1	0.94	0.31	56,56,56,56	0
4	MG	B	426	1/1	0.97	0.15	48,48,48,48	0
4	MG	B	425	1/1	0.99	0.14	42,42,42,42	0

The following is a graphical depiction of the model fit to experimental electron density of all instances of the Ligand of Interest. In addition, ligands with molecular weight > 250 and outliers as shown on the geometry validation Tables will also be included. Each fit is shown from different orientation to approximate a three-dimensional view.



6.5 Other polymers [i](#)

There are no such residues in this entry.