



Full wwPDB X-ray Structure Validation Report ⓘ

May 14, 2020 – 09:10 am BST

PDB ID : 5NM3
Title : Deinococcus radiodurans BphP PAS-GAF-PHY Y263F mutant, pre-illuminated
Authors : Takala, H.; Westehoff, S.; Ihalainen, J.A.
Deposited on : 2017-04-05
Resolution : 3.30 Å(reported)

This is a Full wwPDB X-ray Structure Validation Report for a publicly released PDB entry.

We welcome your comments at validation@mail.wwpdb.org

A user guide is available at

<https://www.wwpdb.org/validation/2017/XrayValidationReportHelp>

with specific help available everywhere you see the ⓘ symbol.

The following versions of software and data (see [references ⓘ](#)) were used in the production of this report:

MolProbity : 4.02b-467
Mogul : 1.8.5 (274361), CSD as541be (2020)
Xtriage (Phenix) : 1.13
EDS : 2.11
buster-report : 1.1.7 (2018)
Percentile statistics : 20191225.v01 (using entries in the PDB archive December 25th 2019)
Refmac : 5.8.0158
CCP4 : 7.0.044 (Gargrove)
Ideal geometry (proteins) : Engh & Huber (2001)
Ideal geometry (DNA, RNA) : Parkinson et al. (1996)
Validation Pipeline (wwPDB-VP) : 2.11

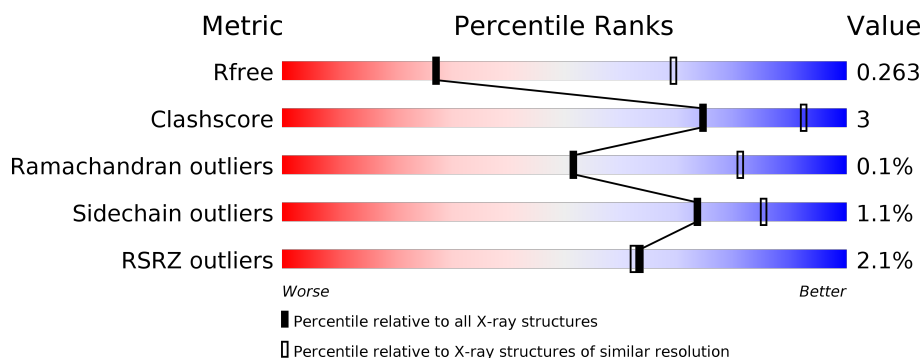
1 Overall quality at a glance

The following experimental techniques were used to determine the structure:

X-RAY DIFFRACTION

The reported resolution of this entry is 3.30 Å.

Percentile scores (ranging between 0-100) for global validation metrics of the entry are shown in the following graphic. The table shows the number of entries on which the scores are based.



Metric	Whole archive (#Entries)	Similar resolution (#Entries, resolution range(Å))
R_{free}	130704	1149 (3.34-3.26)
Clashscore	141614	1205 (3.34-3.26)
Ramachandran outliers	138981	1183 (3.34-3.26)
Sidechain outliers	138945	1182 (3.34-3.26)
RSRZ outliers	127900	1115 (3.34-3.26)

The table below summarises the geometric issues observed across the polymeric chains and their fit to the electron density. The red, orange, yellow and green segments on the lower bar indicate the fraction of residues that contain outliers for ≥ 3 , 2, 1 and 0 types of geometric quality criteria respectively. A grey segment represents the fraction of residues that are not modelled. The numeric value for each fraction is indicated below the corresponding segment, with a dot representing fractions $\leq 5\%$. The upper red bar (where present) indicates the fraction of residues that have poor fit to the electron density. The numeric value is given above the bar.

Mol	Chain	Length	Quality of chain
1	A	523	<div> <div> <div>0%</div> <div>91%</div> <div>6%</div> </div> </div>
1	B	523	<div> <div>2%</div> <div>90%</div> <div>7%</div> </div>
1	C	523	<div> <div>2%</div> <div>90%</div> <div>8%</div> </div>
1	D	523	<div> <div>2%</div> <div>89%</div> <div>9%</div> </div>

2 Entry composition

There are 3 unique types of molecules in this entry. The entry contains 15139 atoms, of which 0 are hydrogens and 0 are deuteriums.

In the tables below, the ZeroOcc column contains the number of atoms modelled with zero occupancy, the AltConf column contains the number of residues with at least one atom in alternate conformation and the Trace column contains the number of residues modelled with at most 2 atoms.

- Molecule 1 is a protein called Bacteriophytochrome.

Mol	Chain	Residues	Atoms					ZeroOcc	AltConf	Trace
1	A	492	Total	C	N	O	S	0	0	0
			3752	2386	664	691	11			
1	B	485	Total	C	N	O	S	0	0	0
			3710	2364	654	681	11			
1	C	482	Total	C	N	O	S	0	0	0
			3676	2341	649	675	11			
1	D	478	Total	C	N	O	S	0	0	0
			3652	2329	645	667	11			

There are 88 discrepancies between the modelled and reference sequences:

Chain	Residue	Modelled	Actual	Comment	Reference
A	-13	MET	-	initiating methionine	UNP Q9RZA4
A	-12	ALA	-	expression tag	UNP Q9RZA4
A	-11	SER	-	expression tag	UNP Q9RZA4
A	-10	MET	-	expression tag	UNP Q9RZA4
A	-9	THR	-	expression tag	UNP Q9RZA4
A	-8	GLY	-	expression tag	UNP Q9RZA4
A	-7	GLY	-	expression tag	UNP Q9RZA4
A	-6	GLN	-	expression tag	UNP Q9RZA4
A	-5	GLN	-	expression tag	UNP Q9RZA4
A	-4	MET	-	expression tag	UNP Q9RZA4
A	-3	GLY	-	expression tag	UNP Q9RZA4
A	-2	ARG	-	expression tag	UNP Q9RZA4
A	-1	GLY	-	expression tag	UNP Q9RZA4
A	0	SER	-	expression tag	UNP Q9RZA4
A	263	PHE	TYR	engineered mutation	UNP Q9RZA4
A	503	GLU	-	expression tag	UNP Q9RZA4
A	504	HIS	-	expression tag	UNP Q9RZA4
A	505	HIS	-	expression tag	UNP Q9RZA4
A	506	HIS	-	expression tag	UNP Q9RZA4
A	507	HIS	-	expression tag	UNP Q9RZA4
A	508	HIS	-	expression tag	UNP Q9RZA4

Continued on next page...

Continued from previous page...

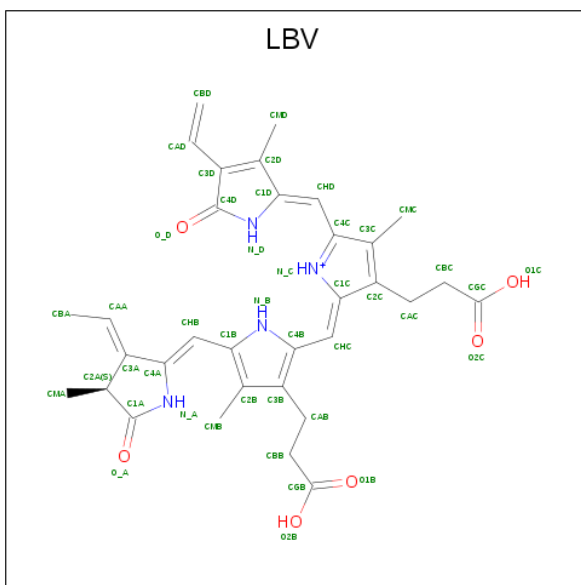
Chain	Residue	Modelled	Actual	Comment	Reference
A	509	HIS	-	expression tag	UNP Q9RZA4
B	-13	MET	-	initiating methionine	UNP Q9RZA4
B	-12	ALA	-	expression tag	UNP Q9RZA4
B	-11	SER	-	expression tag	UNP Q9RZA4
B	-10	MET	-	expression tag	UNP Q9RZA4
B	-9	THR	-	expression tag	UNP Q9RZA4
B	-8	GLY	-	expression tag	UNP Q9RZA4
B	-7	GLY	-	expression tag	UNP Q9RZA4
B	-6	GLN	-	expression tag	UNP Q9RZA4
B	-5	GLN	-	expression tag	UNP Q9RZA4
B	-4	MET	-	expression tag	UNP Q9RZA4
B	-3	GLY	-	expression tag	UNP Q9RZA4
B	-2	ARG	-	expression tag	UNP Q9RZA4
B	-1	GLY	-	expression tag	UNP Q9RZA4
B	0	SER	-	expression tag	UNP Q9RZA4
B	263	PHE	TYR	engineered mutation	UNP Q9RZA4
B	503	GLU	-	expression tag	UNP Q9RZA4
B	504	HIS	-	expression tag	UNP Q9RZA4
B	505	HIS	-	expression tag	UNP Q9RZA4
B	506	HIS	-	expression tag	UNP Q9RZA4
B	507	HIS	-	expression tag	UNP Q9RZA4
B	508	HIS	-	expression tag	UNP Q9RZA4
B	509	HIS	-	expression tag	UNP Q9RZA4
C	-13	MET	-	initiating methionine	UNP Q9RZA4
C	-12	ALA	-	expression tag	UNP Q9RZA4
C	-11	SER	-	expression tag	UNP Q9RZA4
C	-10	MET	-	expression tag	UNP Q9RZA4
C	-9	THR	-	expression tag	UNP Q9RZA4
C	-8	GLY	-	expression tag	UNP Q9RZA4
C	-7	GLY	-	expression tag	UNP Q9RZA4
C	-6	GLN	-	expression tag	UNP Q9RZA4
C	-5	GLN	-	expression tag	UNP Q9RZA4
C	-4	MET	-	expression tag	UNP Q9RZA4
C	-3	GLY	-	expression tag	UNP Q9RZA4
C	-2	ARG	-	expression tag	UNP Q9RZA4
C	-1	GLY	-	expression tag	UNP Q9RZA4
C	0	SER	-	expression tag	UNP Q9RZA4
C	263	PHE	TYR	engineered mutation	UNP Q9RZA4
C	503	GLU	-	expression tag	UNP Q9RZA4
C	504	HIS	-	expression tag	UNP Q9RZA4
C	505	HIS	-	expression tag	UNP Q9RZA4
C	506	HIS	-	expression tag	UNP Q9RZA4

Continued on next page...

Continued from previous page...

Chain	Residue	Modelled	Actual	Comment	Reference
C	507	HIS	-	expression tag	UNP Q9RZA4
C	508	HIS	-	expression tag	UNP Q9RZA4
C	509	HIS	-	expression tag	UNP Q9RZA4
D	-13	MET	-	initiating methionine	UNP Q9RZA4
D	-12	ALA	-	expression tag	UNP Q9RZA4
D	-11	SER	-	expression tag	UNP Q9RZA4
D	-10	MET	-	expression tag	UNP Q9RZA4
D	-9	THR	-	expression tag	UNP Q9RZA4
D	-8	GLY	-	expression tag	UNP Q9RZA4
D	-7	GLY	-	expression tag	UNP Q9RZA4
D	-6	GLN	-	expression tag	UNP Q9RZA4
D	-5	GLN	-	expression tag	UNP Q9RZA4
D	-4	MET	-	expression tag	UNP Q9RZA4
D	-3	GLY	-	expression tag	UNP Q9RZA4
D	-2	ARG	-	expression tag	UNP Q9RZA4
D	-1	GLY	-	expression tag	UNP Q9RZA4
D	0	SER	-	expression tag	UNP Q9RZA4
D	263	PHE	TYR	engineered mutation	UNP Q9RZA4
D	503	GLU	-	expression tag	UNP Q9RZA4
D	504	HIS	-	expression tag	UNP Q9RZA4
D	505	HIS	-	expression tag	UNP Q9RZA4
D	506	HIS	-	expression tag	UNP Q9RZA4
D	507	HIS	-	expression tag	UNP Q9RZA4
D	508	HIS	-	expression tag	UNP Q9RZA4
D	509	HIS	-	expression tag	UNP Q9RZA4

- Molecule 2 is 3-[2-[(Z)-[3-(2-carboxyethyl)-5-[(Z)-(4-ethenyl-3-methyl-5-oxidanylidene-pyrro-
l-2-ylidene)methyl]-4-methyl-pyrrol-1-ium-2-ylidene]methyl]-5-[(Z)-[(3E)-3-ethylidene-4-m
ethyl-5-oxidanylidene-pyrrolidin-2-ylidene]methyl]-4-methyl-1H-pyrrol-3-yl]propanoic acid
(three-letter code: LBV) (formula: C₃₃H₃₇N₄O₆).



Mol	Chain	Residues	Atoms				ZeroOcc	AltConf
2	A	1	Total 86	C 66	N 8	O 12	0	1
2	B	1	Total 86	C 66	N 8	O 12	0	1
2	C	1	Total 86	C 66	N 8	O 12	0	1
2	D	1	Total 86	C 66	N 8	O 12	0	1

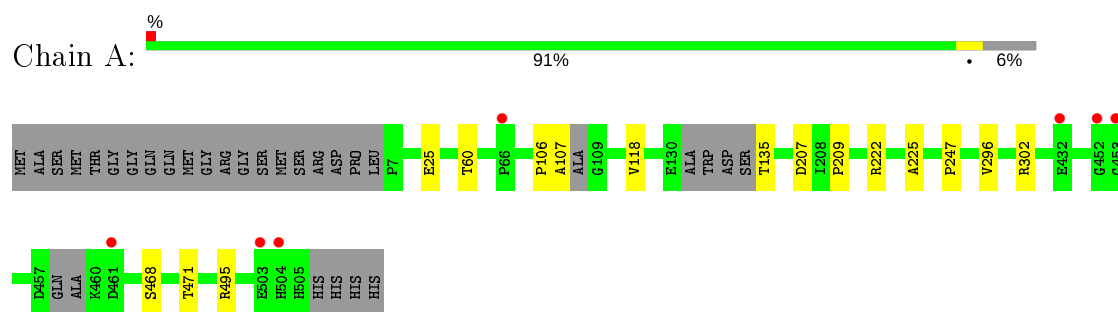
- Molecule 3 is water.

Mol	Chain	Residues	Atoms	ZeroOcc	AltConf
3	A	2	Total O 2 2	0	0
3	B	2	Total O 2 2	0	0
3	C	1	Total O 1 1	0	0

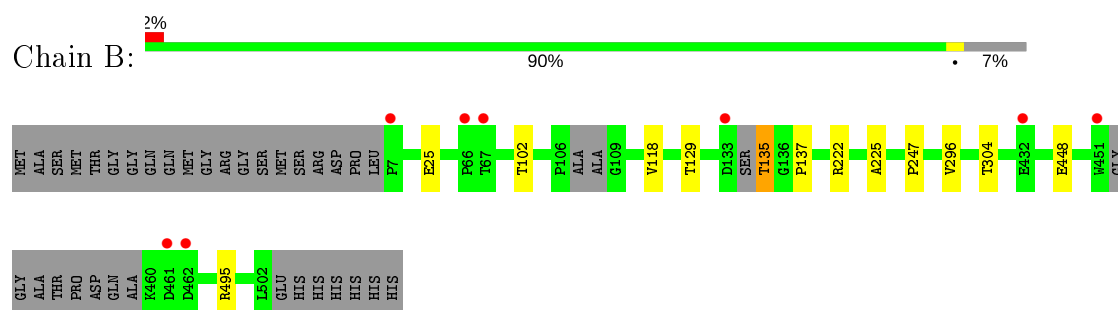
3 Residue-property plots [i](#)

These plots are drawn for all protein, RNA and DNA chains in the entry. The first graphic for a chain summarises the proportions of the various outlier classes displayed in the second graphic. The second graphic shows the sequence view annotated by issues in geometry and electron density. Residues are color-coded according to the number of geometric quality criteria for which they contain at least one outlier: green = 0, yellow = 1, orange = 2 and red = 3 or more. A red dot above a residue indicates a poor fit to the electron density ($RSRZ > 2$). Stretches of 2 or more consecutive residues without any outlier are shown as a green connector. Residues present in the sample, but not in the model, are shown in grey.

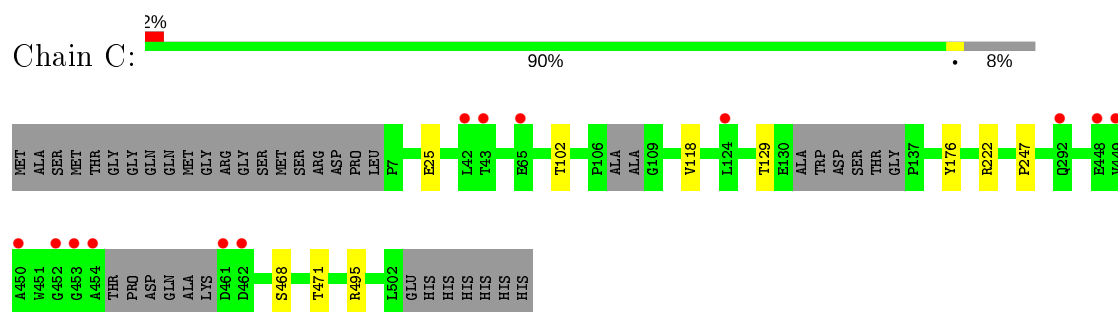
- Molecule 1: Bacteriophytochrome



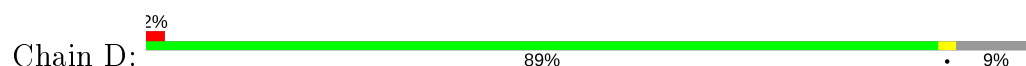
- Molecule 1: Bacteriophytochrome

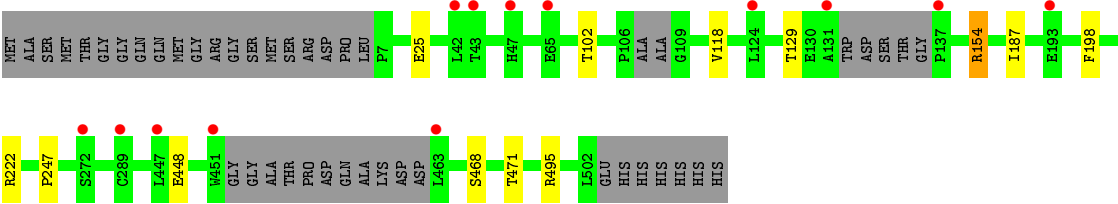


- Molecule 1: Bacteriophytochrome



- Molecule 1: Bacteriophytochrome





4 Data and refinement statistics

Property	Value	Source
Space group	P 21 21 21	Depositor
Cell constants a, b, c, α , β , γ	85.70Å 198.50Å 223.60Å 90.00° 90.00° 90.00°	Depositor
Resolution (Å)	19.98 – 3.30 19.98 – 3.30	Depositor EDS
% Data completeness (in resolution range)	99.1 (19.98-3.30) 99.7 (19.98-3.30)	Depositor EDS
R_{merge}	0.16	Depositor
R_{sym}	(Not available)	Depositor
$\langle I/\sigma(I) \rangle$ ¹	1.25 (at 3.29Å)	Xtriage
Refinement program	REFMAC 5.8.0135	Depositor
R, R_{free}	0.234 , 0.267 0.234 , 0.263	Depositor DCC
R_{free} test set	2890 reflections (5.00%)	wwPDB-VP
Wilson B-factor (Å ²)	99.8	Xtriage
Anisotropy	0.025	Xtriage
Bulk solvent k_{sol} (e/Å ³), B_{sol} (Å ²)	0.27 , 50.9	EDS
L-test for twinning ²	$\langle L \rangle = 0.46$, $\langle L^2 \rangle = 0.29$	Xtriage
Estimated twinning fraction	No twinning to report.	Xtriage
F_o, F_c correlation	0.93	EDS
Total number of atoms	15139	wwPDB-VP
Average B, all atoms (Å ²)	115.0	wwPDB-VP

Xtriage's analysis on translational NCS is as follows: *The largest off-origin peak in the Patterson function is 3.21% of the height of the origin peak. No significant pseudotranslation is detected.*

¹Intensities estimated from amplitudes.

²Theoretical values of $\langle |L| \rangle$, $\langle L^2 \rangle$ for acentric reflections are 0.5, 0.333 respectively for untwinned datasets, and 0.375, 0.2 for perfectly twinned datasets.

5 Model quality [i](#)

5.1 Standard geometry [i](#)

Bond lengths and bond angles in the following residue types are not validated in this section: LBV

The Z score for a bond length (or angle) is the number of standard deviations the observed value is removed from the expected value. A bond length (or angle) with $|Z| > 5$ is considered an outlier worth inspection. RMSZ is the root-mean-square of all Z scores of the bond lengths (or angles).

Mol	Chain	Bond lengths		Bond angles	
		RMSZ	$\# Z > 5$	RMSZ	$\# Z > 5$
1	A	0.38	0/3851	0.62	1/5268 (0.0%)
1	B	0.38	0/3808	0.62	0/5210
1	C	0.37	0/3772	0.61	0/5159
1	D	0.36	0/3748	0.62	1/5127 (0.0%)
All	All	0.37	0/15179	0.62	2/20764 (0.0%)

There are no bond length outliers.

All (2) bond angle outliers are listed below:

Mol	Chain	Res	Type	Atoms	Z	Observed(°)	Ideal(°)
1	D	154	ARG	NE-CZ-NH1	6.09	123.34	120.30
1	A	302	ARG	NE-CZ-NH1	5.17	122.89	120.30

There are no chirality outliers.

There are no planarity outliers.

5.2 Too-close contacts [i](#)

In the following table, the Non-H and H(model) columns list the number of non-hydrogen atoms and hydrogen atoms in the chain respectively. The H(added) column lists the number of hydrogen atoms added and optimized by MolProbity. The Clashes column lists the number of clashes within the asymmetric unit, whereas Symm-Clashes lists symmetry related clashes.

Mol	Chain	Non-H	H(model)	H(added)	Clashes	Symm-Clashes
1	A	3752	0	3706	6	0
1	B	3710	0	3671	4	0
1	C	3676	0	3641	4	0
1	D	3652	0	3627	6	0
2	A	86	0	66	21	0

Continued on next page...

Continued from previous page...

Mol	Chain	Non-H	H(model)	H(added)	Clashes	Symm-Clashes
2	B	86	0	67	18	0
2	C	86	0	68	22	0
2	D	86	0	67	21	0
3	A	2	0	0	0	0
3	B	2	0	0	0	0
3	C	1	0	0	0	0
All	All	15139	0	14913	97	0

The all-atom clashscore is defined as the number of clashes found per 1000 atoms (including hydrogen atoms). The all-atom clashscore for this structure is 3.

All (97) close contacts within the same asymmetric unit are listed below, sorted by their clash magnitude.

Atom-1	Atom-2	Interatomic distance (Å)	Clash overlap (Å)
2:D:600[B]:LBV:CMC	2:D:600[B]:LBV:HMD3	1.32	1.53
2:C:600[B]:LBV:HMD3	2:C:600[B]:LBV:CMC	1.62	1.29
2:B:600[B]:LBV:HMD3	2:B:600[B]:LBV:CMC	1.65	1.27
2:A:600[B]:LBV:CMC	2:A:600[B]:LBV:HMD3	1.64	1.25
2:C:600[B]:LBV:HMC1	2:C:600[B]:LBV:HMD3	1.25	1.19
2:D:600[B]:LBV:CMC	2:D:600[B]:LBV:CMD	2.24	1.14
2:D:600[B]:LBV:HMC1	2:D:600[B]:LBV:HMD3	1.25	1.12
2:C:600[A]:LBV:N_D	2:C:600[A]:LBV:HMC1	1.65	1.11
2:A:600[A]:LBV:HMA1	2:A:600[A]:LBV:HBA2	1.31	1.11
2:D:600[B]:LBV:HMC2	2:D:600[B]:LBV:HMD3	1.11	1.07
2:D:600[B]:LBV:HMC1	2:D:600[B]:LBV:CMD	1.84	1.05
2:A:600[A]:LBV:CBA	2:A:600[A]:LBV:HMA1	1.88	1.03
2:C:600[A]:LBV:HAG	2:C:600[A]:LBV:HMC1	1.18	1.03
2:A:600[B]:LBV:HMC1	2:A:600[B]:LBV:HMD3	1.41	1.02
2:A:600[A]:LBV:CMA	2:A:600[A]:LBV:HBA2	1.89	1.02
2:B:600[B]:LBV:HMD3	2:B:600[B]:LBV:HMC2	1.42	1.02
2:A:600[B]:LBV:HMD3	2:A:600[B]:LBV:HMC2	1.38	1.01
2:B:600[B]:LBV:HMD3	2:B:600[B]:LBV:HMC1	1.40	0.97
2:C:600[B]:LBV:HMC1	2:C:600[B]:LBV:CMD	1.95	0.95
2:D:600[B]:LBV:HMC1	2:D:600[B]:LBV:C2D	1.97	0.94
2:C:600[B]:LBV:HMD3	2:C:600[B]:LBV:HMC2	1.48	0.91
2:C:600[A]:LBV:HAG	2:C:600[A]:LBV:CMC	1.84	0.91
2:A:600[A]:LBV:CMA	2:A:600[A]:LBV:CBA	2.48	0.85
2:A:600[B]:LBV:CMC	2:A:600[B]:LBV:CMD	2.53	0.83
2:D:600[A]:LBV:HMA1	2:D:600[A]:LBV:HBA2	1.62	0.82
2:B:600[B]:LBV:CMD	2:B:600[B]:LBV:CMC	2.55	0.81
2:D:600[B]:LBV:C3C	2:D:600[B]:LBV:HMD3	2.09	0.81

Continued on next page...

Continued from previous page...

Atom-1	Atom-2	Interatomic distance (Å)	Clash overlap (Å)
2:A:600[A]:LBV:HMC1	2:A:600[A]:LBV:N_D	1.98	0.78
2:D:600[B]:LBV:HMC2	2:D:600[B]:LBV:CMD	2.03	0.77
2:D:600[A]:LBV:HMC1	2:D:600[A]:LBV:N_D	2.00	0.76
2:B:600[A]:LBV:N_D	2:B:600[A]:LBV:HMC1	1.98	0.76
2:C:600[B]:LBV:C2D	2:C:600[B]:LBV:HMC1	2.17	0.75
2:C:600[B]:LBV:HMA1	2:C:600[B]:LBV:HBA2	1.71	0.72
2:A:600[A]:LBV:CMC	2:A:600[A]:LBV:N_D	2.53	0.72
2:B:600[A]:LBV:HAG	2:B:600[A]:LBV:CMC	2.03	0.71
2:C:600[B]:LBV:O2C	2:C:600[B]:LBV:HMC2	1.91	0.71
2:B:600[A]:LBV:N_D	2:B:600[A]:LBV:CMC	2.55	0.68
1:B:135:THR:N	1:B:304:THR:HG1	1.95	0.66
2:C:600[B]:LBV:CMD	2:C:600[B]:LBV:CMC	2.54	0.65
2:C:600[A]:LBV:HMA1	2:C:600[A]:LBV:HBA2	1.80	0.64
2:B:600[A]:LBV:HBA2	2:B:600[A]:LBV:HMA1	1.80	0.64
2:A:600[A]:LBV:HAG	2:A:600[A]:LBV:CMC	2.11	0.63
2:D:600[B]:LBV:HAE	2:D:600[B]:LBV:HAF	1.46	0.63
2:D:600[B]:LBV:HBA2	2:D:600[B]:LBV:HMA1	1.81	0.63
2:B:600[B]:LBV:CMD	2:B:600[B]:LBV:HMC1	2.25	0.63
2:A:600[B]:LBV:HMC2	2:A:600[B]:LBV:CMD	2.24	0.61
2:C:600[B]:LBV:CBB	2:C:600[B]:LBV:HMB1	2.30	0.61
2:A:600[A]:LBV:HAF	2:A:600[A]:LBV:HAE	1.50	0.59
2:B:600[B]:LBV:HHC1	2:B:600[B]:LBV:HBB1	1.85	0.58
2:D:600[A]:LBV:HAE	2:D:600[A]:LBV:HAF	1.51	0.58
2:A:600[B]:LBV:HMC1	2:A:600[B]:LBV:CMD	2.24	0.57
2:D:600[A]:LBV:CMC	2:D:600[A]:LBV:N_D	2.66	0.57
2:A:600[A]:LBV:HMC1	2:A:600[A]:LBV:C1D	2.34	0.56
2:B:600[A]:LBV:HAE	2:B:600[A]:LBV:HAF	1.52	0.56
2:C:600[A]:LBV:N_D	2:C:600[A]:LBV:CMC	2.51	0.54
1:D:154:ARG:NH2	1:D:187:ILE:O	2.43	0.51
1:B:225:ALA:HB1	1:B:296:VAL:HG22	1.92	0.51
1:C:176:TYR:OH	2:C:600[B]:LBV:HBD1	2.09	0.51
2:B:600[B]:LBV:CMD	2:B:600[B]:LBV:HMC2	2.28	0.51
2:D:600[A]:LBV:HMC1	2:D:600[A]:LBV:C1D	2.39	0.51
1:A:225:ALA:HB1	1:A:296:VAL:HG22	1.92	0.50
1:D:198:PHE:CD2	2:D:600[A]:LBV:HBD2	2.47	0.50
2:B:600[B]:LBV:HAF	2:B:600[B]:LBV:HAE	1.60	0.50
2:D:600[A]:LBV:CMC	2:D:600[A]:LBV:HAG	2.24	0.50
2:A:600[A]:LBV:HMA2	2:A:600[A]:LBV:HBA2	1.86	0.49
2:C:600[B]:LBV:HMD1	2:C:600[B]:LBV:HBD1	1.93	0.48
2:B:600[B]:LBV:HMD3	2:B:600[B]:LBV:C3C	2.39	0.47
2:C:600[B]:LBV:HBB2	2:C:600[B]:LBV:HMB1	1.96	0.47

Continued on next page...

Continued from previous page...

Atom-1	Atom-2	Interatomic distance (Å)	Clash overlap (Å)
2:C:600[A]:LBV:HAE	2:C:600[A]:LBV:HAF	1.63	0.47
2:B:600[A]:LBV:C1D	2:B:600[A]:LBV:HMC1	2.45	0.47
2:B:600[A]:LBV:C3C	2:B:600[A]:LBV:HAG	2.27	0.46
2:B:600[B]:LBV:CMD	2:B:600[B]:LBV:C3C	2.93	0.46
2:C:600[B]:LBV:HAE	2:C:600[B]:LBV:HAF	1.62	0.45
1:A:207:ASP:HB3	2:A:600[A]:LBV:HHD1	1.99	0.45
2:B:600[B]:LBV:HHC1	2:B:600[B]:LBV:HBC1	1.97	0.45
2:C:600[A]:LBV:C1D	2:C:600[A]:LBV:HMC1	2.40	0.44
2:A:600[B]:LBV:C3C	2:A:600[B]:LBV:CMD	2.95	0.44
2:C:600[B]:LBV:O2C	2:C:600[B]:LBV:CMC	2.64	0.44
1:A:209:PRO:HG3	2:A:600[B]:LBV:HAA1	2.00	0.43
1:A:106:PRO:O	1:A:107:ALA:HB2	2.18	0.43
2:D:600[B]:LBV:C3C	2:D:600[B]:LBV:CMD	2.84	0.43
2:C:600[B]:LBV:HMB1	2:C:600[B]:LBV:HBB1	2.00	0.43
2:A:600[A]:LBV:HAG	2:A:600[A]:LBV:C3C	2.30	0.43
1:D:118:VAL:HG11	1:D:247:PRO:HG2	2.01	0.42
1:C:118:VAL:HG11	1:C:247:PRO:HG2	2.01	0.42
1:D:198:PHE:CE2	2:D:600[A]:LBV:HBD2	2.55	0.42
1:B:118:VAL:HG11	1:B:247:PRO:HG2	2.02	0.42
1:A:118:VAL:HG11	1:A:247:PRO:HG2	2.02	0.42
1:B:102:THR:HG22	1:B:129:THR:HG21	2.03	0.41
2:D:600[B]:LBV:CBA	2:D:600[B]:LBV:HMA1	2.49	0.41
2:D:600[B]:LBV:HMC1	2:D:600[B]:LBV:C1D	2.47	0.41
1:C:468:SER:HA	1:C:471:THR:HG22	2.02	0.41
1:D:468:SER:HA	1:D:471:THR:HG22	2.03	0.41
1:A:468:SER:HA	1:A:471:THR:HG22	2.03	0.41
2:A:600[B]:LBV:HBB1	2:A:600[B]:LBV:HHC1	2.04	0.40
1:C:102:THR:HG22	1:C:129:THR:HG21	2.03	0.40
1:D:102:THR:HG22	1:D:129:THR:HG21	2.03	0.40

There are no symmetry-related clashes.

5.3 Torsion angles ⓘ

5.3.1 Protein backbone ⓘ

In the following table, the Percentiles column shows the percent Ramachandran outliers of the chain as a percentile score with respect to all X-ray entries followed by that with respect to entries of similar resolution.

The Analysed column shows the number of residues for which the backbone conformation was analysed, and the total number of residues.

Mol	Chain	Analysed	Favoured	Allowed	Outliers	Percentiles	
1	A	484/523 (92%)	464 (96%)	20 (4%)	0	100	100
1	B	477/523 (91%)	458 (96%)	18 (4%)	1 (0%)	47	77
1	C	474/523 (91%)	456 (96%)	18 (4%)	0	100	100
1	D	470/523 (90%)	453 (96%)	17 (4%)	0	100	100
All	All	1905/2092 (91%)	1831 (96%)	73 (4%)	1 (0%)	51	81

All (1) Ramachandran outliers are listed below:

Mol	Chain	Res	Type
1	B	137	PRO

5.3.2 Protein sidechains ⓘ

In the following table, the Percentiles column shows the percent sidechain outliers of the chain as a percentile score with respect to all X-ray entries followed by that with respect to entries of similar resolution.

The Analysed column shows the number of residues for which the sidechain conformation was analysed, and the total number of residues.

Mol	Chain	Analysed	Rotameric	Outliers	Percentiles	
1	A	387/410 (94%)	382 (99%)	5 (1%)	69	82
1	B	383/410 (93%)	378 (99%)	5 (1%)	69	82
1	C	379/410 (92%)	376 (99%)	3 (1%)	81	89
1	D	377/410 (92%)	373 (99%)	4 (1%)	73	85
All	All	1526/1640 (93%)	1509 (99%)	17 (1%)	73	85

All (17) residues with a non-rotameric sidechain are listed below:

Mol	Chain	Res	Type
1	A	25	GLU
1	A	60	THR
1	A	135	THR
1	A	222	ARG
1	A	495	ARG
1	B	25	GLU
1	B	135	THR
1	B	222	ARG
1	B	448	GLU
1	B	495	ARG

Continued on next page...

Continued from previous page...

Mol	Chain	Res	Type
1	C	25	GLU
1	C	222	ARG
1	C	495	ARG
1	D	25	GLU
1	D	222	ARG
1	D	448	GLU
1	D	495	ARG

Some sidechains can be flipped to improve hydrogen bonding and reduce clashes. All (7) such sidechains are listed below:

Mol	Chain	Res	Type
1	A	335	HIS
1	B	72	GLN
1	B	335	HIS
1	C	81	GLN
1	C	335	HIS
1	D	81	GLN
1	D	335	HIS

5.3.3 RNA ⓘ

There are no RNA molecules in this entry.

5.4 Non-standard residues in protein, DNA, RNA chains ⓘ

There are no non-standard protein/DNA/RNA residues in this entry.

5.5 Carbohydrates ⓘ

There are no carbohydrates in this entry.

5.6 Ligand geometry ⓘ

8 ligands are modelled in this entry.

In the following table, the Counts columns list the number of bonds (or angles) for which Mogul statistics could be retrieved, the number of bonds (or angles) that are observed in the model and the number of bonds (or angles) that are defined in the Chemical Component Dictionary. The Link column lists molecule types, if any, to which the group is linked. The Z score for a bond

length (or angle) is the number of standard deviations the observed value is removed from the expected value. A bond length (or angle) with $|Z| > 2$ is considered an outlier worth inspection. RMSZ is the root-mean-square of all Z scores of the bond lengths (or angles).

Mol	Type	Chain	Res	Link	Bond lengths			Bond angles		
					Counts	RMSZ	# Z > 2	Counts	RMSZ	# Z > 2
2	LBV	D	600[B]	1	36,46,46	2.92	13 (36%)	41,67,67	2.24	10 (24%)
2	LBV	C	600[B]	1	36,46,46	2.87	11 (30%)	41,67,67	2.23	15 (36%)
2	LBV	B	600[A]	1	36,46,46	2.94	14 (38%)	41,67,67	2.50	11 (26%)
2	LBV	C	600[A]	1	36,46,46	2.86	13 (36%)	41,67,67	2.24	12 (29%)
2	LBV	A	600[A]	1	36,46,46	2.88	12 (33%)	41,67,67	2.71	14 (34%)
2	LBV	B	600[B]	1	36,46,46	2.96	13 (36%)	41,67,67	2.39	14 (34%)
2	LBV	A	600[B]	1	36,46,46	2.93	13 (36%)	41,67,67	2.41	12 (29%)
2	LBV	D	600[A]	1	36,46,46	2.90	13 (36%)	41,67,67	2.25	12 (29%)

In the following table, the Chirals column lists the number of chiral outliers, the number of chiral centers analysed, the number of these observed in the model and the number defined in the Chemical Component Dictionary. Similar counts are reported in the Torsion and Rings columns. '-' means no outliers of that kind were identified.

Mol	Type	Chain	Res	Link	Chirals	Torsions	Rings
2	LBV	D	600[B]	1	-	8/22/74/74	0/4/4/4
2	LBV	C	600[B]	1	-	9/22/74/74	0/4/4/4
2	LBV	B	600[A]	1	-	5/22/74/74	0/4/4/4
2	LBV	C	600[A]	1	-	8/22/74/74	0/4/4/4
2	LBV	A	600[A]	1	-	5/22/74/74	0/4/4/4
2	LBV	B	600[B]	1	-	11/22/74/74	0/4/4/4
2	LBV	A	600[B]	1	-	11/22/74/74	0/4/4/4
2	LBV	D	600[A]	1	-	9/22/74/74	0/4/4/4

All (102) bond length outliers are listed below:

Mol	Chain	Res	Type	Atoms	Z	Observed(Å)	Ideal(Å)
2	B	600[A]	LBV	C1A-N_A	10.52	1.51	1.37
2	B	600[B]	LBV	C1A-N_A	10.32	1.51	1.37
2	A	600[B]	LBV	C1A-N_A	10.00	1.50	1.37
2	A	600[A]	LBV	C1A-N_A	9.82	1.50	1.37
2	D	600[A]	LBV	C1A-N_A	9.82	1.50	1.37
2	C	600[B]	LBV	C1A-N_A	9.78	1.50	1.37
2	D	600[B]	LBV	C1A-N_A	9.67	1.50	1.37
2	C	600[A]	LBV	C1A-N_A	9.60	1.50	1.37

Continued on next page...

Continued from previous page...

Mol	Chain	Res	Type	Atoms	Z	Observed(Å)	Ideal(Å)
2	A	600[A]	LBV	CHC-C1C	8.11	1.41	1.35
2	D	600[B]	LBV	CHC-C1C	8.04	1.41	1.35
2	A	600[B]	LBV	CHC-C1C	7.88	1.41	1.35
2	B	600[B]	LBV	CHC-C1C	7.73	1.41	1.35
2	D	600[A]	LBV	CHC-C1C	7.65	1.41	1.35
2	C	600[A]	LBV	CHC-C1C	7.51	1.41	1.35
2	B	600[A]	LBV	CHC-C1C	7.21	1.41	1.35
2	C	600[B]	LBV	CHC-C1C	6.93	1.40	1.35
2	B	600[B]	LBV	CHD-C4C	6.35	1.55	1.40
2	D	600[B]	LBV	CHD-C4C	6.34	1.55	1.40
2	A	600[B]	LBV	CHD-C4C	6.31	1.55	1.40
2	D	600[A]	LBV	CHD-C4C	6.19	1.54	1.40
2	C	600[B]	LBV	CHD-C4C	6.15	1.54	1.40
2	C	600[A]	LBV	CHD-C4C	6.06	1.54	1.40
2	A	600[A]	LBV	CHD-C4C	5.96	1.54	1.40
2	B	600[A]	LBV	CHD-C4C	5.92	1.54	1.40
2	C	600[B]	LBV	C2A-C3A	-4.32	1.46	1.51
2	B	600[A]	LBV	C2A-C3A	-4.27	1.46	1.51
2	B	600[B]	LBV	C2A-C3A	-4.19	1.46	1.51
2	D	600[A]	LBV	C2A-C3A	-4.10	1.46	1.51
2	C	600[A]	LBV	C2A-C3A	-4.09	1.46	1.51
2	D	600[B]	LBV	C2A-C3A	-4.05	1.46	1.51
2	A	600[B]	LBV	C2A-C3A	-4.04	1.46	1.51
2	A	600[A]	LBV	C2A-C3A	-3.82	1.46	1.51
2	C	600[B]	LBV	C1C-C2C	-3.18	1.40	1.45
2	B	600[A]	LBV	C1B-CHB	3.17	1.53	1.41
2	B	600[B]	LBV	C4B-CHC	3.16	1.53	1.41
2	B	600[A]	LBV	CHB-C4A	3.16	1.40	1.34
2	B	600[B]	LBV	C1B-CHB	3.15	1.53	1.41
2	A	600[B]	LBV	C4B-CHC	3.11	1.53	1.41
2	D	600[A]	LBV	C1C-C2C	-3.10	1.40	1.45
2	A	600[B]	LBV	C1B-CHB	3.09	1.53	1.41
2	D	600[B]	LBV	C4B-CHC	3.08	1.53	1.41
2	C	600[A]	LBV	C4B-CHC	3.08	1.53	1.41
2	A	600[A]	LBV	C4B-CHC	3.06	1.53	1.41
2	D	600[A]	LBV	C1B-CHB	3.05	1.53	1.41
2	D	600[B]	LBV	C1C-C2C	-3.05	1.40	1.45
2	D	600[A]	LBV	C4B-CHC	3.04	1.52	1.41
2	C	600[B]	LBV	C2A-C1A	3.03	1.55	1.51
2	D	600[B]	LBV	C1B-CHB	3.00	1.52	1.41
2	C	600[B]	LBV	C4B-CHC	3.00	1.52	1.41
2	B	600[A]	LBV	C4B-CHC	2.99	1.52	1.41

Continued on next page...

Continued from previous page...

Mol	Chain	Res	Type	Atoms	Z	Observed(Å)	Ideal(Å)
2	B	600[A]	LBV	C1C-C2C	-2.97	1.41	1.45
2	C	600[A]	LBV	C1B-CHB	2.97	1.52	1.41
2	B	600[B]	LBV	CHB-C4A	2.95	1.40	1.34
2	A	600[A]	LBV	C1B-CHB	2.92	1.52	1.41
2	C	600[A]	LBV	C3D-C4D	-2.91	1.39	1.47
2	C	600[A]	LBV	C2A-C1A	2.89	1.55	1.51
2	C	600[B]	LBV	C1B-CHB	2.88	1.52	1.41
2	D	600[B]	LBV	C2A-C1A	2.87	1.55	1.51
2	A	600[B]	LBV	CHB-C4A	2.85	1.40	1.34
2	D	600[A]	LBV	C3D-C4D	-2.84	1.39	1.47
2	A	600[A]	LBV	C4C-C3C	-2.83	1.39	1.45
2	C	600[A]	LBV	C1C-C2C	-2.82	1.41	1.45
2	D	600[A]	LBV	CHB-C4A	2.81	1.40	1.34
2	C	600[B]	LBV	C3D-C4D	-2.80	1.39	1.47
2	D	600[A]	LBV	C2A-C1A	2.76	1.55	1.51
2	B	600[B]	LBV	C1C-C2C	-2.72	1.41	1.45
2	D	600[B]	LBV	CHB-C4A	2.72	1.40	1.34
2	D	600[A]	LBV	C4C-C3C	-2.62	1.40	1.45
2	D	600[B]	LBV	C3D-C4D	-2.62	1.40	1.47
2	B	600[A]	LBV	C3D-C4D	-2.61	1.40	1.47
2	A	600[B]	LBV	C4C-C3C	-2.60	1.40	1.45
2	A	600[A]	LBV	CHB-C4A	2.57	1.39	1.34
2	C	600[B]	LBV	CHB-C4A	2.55	1.39	1.34
2	C	600[A]	LBV	CHB-C4A	2.55	1.39	1.34
2	A	600[B]	LBV	C3D-C4D	-2.54	1.40	1.47
2	B	600[B]	LBV	C3D-C4D	-2.52	1.40	1.47
2	B	600[A]	LBV	C4C-C3C	-2.49	1.40	1.45
2	A	600[A]	LBV	C3D-C4D	-2.49	1.40	1.47
2	D	600[B]	LBV	C4C-C3C	-2.47	1.40	1.45
2	B	600[B]	LBV	C4C-C3C	-2.47	1.40	1.45
2	C	600[B]	LBV	C4C-C3C	-2.45	1.40	1.45
2	A	600[A]	LBV	C1C-C2C	-2.44	1.41	1.45
2	C	600[A]	LBV	C4C-C3C	-2.44	1.40	1.45
2	A	600[B]	LBV	C1C-C2C	-2.43	1.41	1.45
2	A	600[B]	LBV	C2A-C1A	2.36	1.54	1.51
2	C	600[A]	LBV	C1D-C2D	-2.34	1.40	1.45
2	B	600[A]	LBV	C2A-C1A	2.30	1.54	1.51
2	A	600[B]	LBV	C2C-C3C	2.24	1.41	1.36
2	A	600[A]	LBV	C1D-C2D	-2.22	1.41	1.45
2	B	600[A]	LBV	C1D-C2D	-2.21	1.41	1.45
2	A	600[B]	LBV	C1D-C2D	-2.21	1.41	1.45
2	B	600[B]	LBV	C2C-C3C	2.21	1.41	1.36

Continued on next page...

Continued from previous page...

Mol	Chain	Res	Type	Atoms	Z	Observed(Å)	Ideal(Å)
2	B	600[A]	LBV	C4A-N_A	2.18	1.41	1.37
2	A	600[A]	LBV	C1D-N_D	-2.12	1.34	1.37
2	D	600[B]	LBV	C1D-C2D	-2.07	1.41	1.45
2	B	600[A]	LBV	C1D-N_D	-2.06	1.34	1.37
2	B	600[B]	LBV	C1D-C2D	-2.04	1.41	1.45
2	D	600[A]	LBV	C4A-N_A	2.04	1.41	1.37
2	D	600[A]	LBV	C1D-C2D	-2.04	1.41	1.45
2	C	600[A]	LBV	C4A-N_A	2.03	1.41	1.37
2	D	600[B]	LBV	C2C-C3C	2.02	1.41	1.36
2	B	600[B]	LBV	C2A-C1A	2.02	1.54	1.51

All (100) bond angle outliers are listed below:

Mol	Chain	Res	Type	Atoms	Z	Observed(°)	Ideal(°)
2	B	600[A]	LBV	C4B-CHC-C1C	-8.47	118.69	128.81
2	D	600[B]	LBV	C4B-CHC-C1C	-7.75	119.55	128.81
2	B	600[B]	LBV	C4B-CHC-C1C	-7.72	119.58	128.81
2	A	600[A]	LBV	C4B-CHC-C1C	-7.61	119.72	128.81
2	D	600[A]	LBV	C4B-CHC-C1C	-7.41	119.96	128.81
2	C	600[A]	LBV	C4B-CHC-C1C	-7.34	120.04	128.81
2	A	600[B]	LBV	CAA-C3A-C4A	-7.27	117.58	126.36
2	C	600[B]	LBV	C4B-CHC-C1C	-7.22	120.18	128.81
2	A	600[A]	LBV	CAA-C3A-C4A	-6.85	118.09	126.36
2	A	600[A]	LBV	C2A-C3A-C4A	6.55	114.99	107.81
2	B	600[B]	LBV	C2A-C3A-C4A	6.53	114.97	107.81
2	B	600[A]	LBV	C2A-C3A-C4A	6.37	114.80	107.81
2	A	600[B]	LBV	C2A-C3A-C4A	6.21	114.62	107.81
2	C	600[B]	LBV	C2A-C3A-C4A	5.61	113.96	107.81
2	D	600[A]	LBV	C2A-C3A-C4A	5.55	113.90	107.81
2	C	600[A]	LBV	C2A-C3A-C4A	5.49	113.83	107.81
2	A	600[B]	LBV	C4B-CHC-C1C	-5.47	122.27	128.81
2	D	600[B]	LBV	C2A-C3A-C4A	5.24	113.55	107.81
2	A	600[A]	LBV	C1D-CHD-C4C	-5.21	115.35	128.08
2	B	600[A]	LBV	C1D-CHD-C4C	-5.12	115.58	128.08
2	D	600[B]	LBV	CAA-C3A-C4A	-4.81	120.55	126.36
2	A	600[A]	LBV	CAC-CBC-CGC	4.34	119.95	112.67
2	C	600[A]	LBV	CAA-C3A-C4A	-4.10	121.41	126.36
2	B	600[B]	LBV	CHC-C1C-N_C	-4.08	123.17	128.83
2	A	600[B]	LBV	CHB-C4A-C3A	-3.96	119.97	127.12
2	A	600[B]	LBV	CAC-CBC-CGC	3.95	119.30	112.67
2	D	600[B]	LBV	CAB-CBB-CGB	3.85	119.14	112.67
2	D	600[A]	LBV	CAA-C3A-C4A	-3.82	121.75	126.36

Continued on next page...

Continued from previous page...

Mol	Chain	Res	Type	Atoms	Z	Observed(°)	Ideal(°)
2	B	600[B]	LBV	CAA-C3A-C4A	-3.82	121.75	126.36
2	D	600[A]	LBV	CAB-CBB-CGB	3.77	119.00	112.67
2	C	600[A]	LBV	CAC-CBC-CGC	3.75	118.97	112.67
2	B	600[A]	LBV	CAA-C3A-C4A	-3.63	121.97	126.36
2	C	600[B]	LBV	CBB-CAB-C3B	3.54	119.02	112.49
2	A	600[A]	LBV	CHB-C4A-C3A	-3.52	120.77	127.12
2	B	600[A]	LBV	CHC-C1C-N_C	-3.51	123.96	128.83
2	D	600[A]	LBV	C1D-CHD-C4C	-3.50	119.54	128.08
2	A	600[A]	LBV	CHC-C1C-N_C	-3.49	123.98	128.83
2	B	600[A]	LBV	CAC-CBC-CGC	3.43	118.42	112.67
2	C	600[A]	LBV	CHC-C1C-N_C	-3.34	124.20	128.83
2	C	600[B]	LBV	CAA-C3A-C4A	-3.31	122.36	126.36
2	D	600[B]	LBV	CAC-CBC-CGC	3.25	118.12	112.67
2	A	600[A]	LBV	CMD-C2D-C1D	3.14	128.09	124.17
2	C	600[B]	LBV	CAC-CBC-CGC	3.12	117.90	112.67
2	A	600[B]	LBV	CBB-CAB-C3B	3.10	118.20	112.49
2	C	600[B]	LBV	CHC-C1C-N_C	-3.09	124.54	128.83
2	B	600[A]	LBV	CBA-CAA-C3A	-3.08	117.70	126.72
2	B	600[A]	LBV	CHB-C4A-C3A	-3.06	121.59	127.12
2	A	600[B]	LBV	CHC-C1C-N_C	-3.02	124.64	128.83
2	A	600[A]	LBV	CBA-CAA-C3A	-3.01	117.92	126.72
2	B	600[B]	LBV	CHB-C4A-C3A	-2.99	121.71	127.12
2	A	600[B]	LBV	CMD-C2D-C1D	2.92	127.81	124.17
2	D	600[A]	LBV	CMD-C2D-C1D	2.89	127.77	124.17
2	B	600[A]	LBV	CAB-CBB-CGB	2.83	117.42	112.67
2	B	600[B]	LBV	CBA-CAA-C3A	-2.82	118.48	126.72
2	B	600[A]	LBV	C3D-C4D-N_D	2.81	109.36	106.19
2	D	600[B]	LBV	CHC-C1C-N_C	-2.81	124.93	128.83
2	A	600[A]	LBV	CAB-CBB-CGB	2.78	117.34	112.67
2	B	600[B]	LBV	CAC-CBC-CGC	2.77	117.31	112.67
2	C	600[B]	LBV	C3D-C4D-N_D	2.74	109.29	106.19
2	D	600[A]	LBV	CHB-C4A-C3A	-2.72	122.22	127.12
2	B	600[B]	LBV	CAB-CBB-CGB	2.71	117.22	112.67
2	C	600[A]	LBV	C3D-C4D-N_D	2.71	109.25	106.19
2	D	600[A]	LBV	CBA-CAA-C3A	-2.70	118.83	126.72
2	C	600[A]	LBV	CAB-CBB-CGB	2.69	117.18	112.67
2	D	600[A]	LBV	CAC-CBC-CGC	2.68	117.17	112.67
2	A	600[A]	LBV	CAC-C2C-C1C	2.63	129.67	125.01
2	D	600[A]	LBV	CHC-C1C-N_C	-2.63	125.18	128.83
2	C	600[B]	LBV	CBA-CAA-C3A	-2.57	119.20	126.72
2	C	600[B]	LBV	CMD-C2D-C1D	2.53	127.33	124.17
2	B	600[B]	LBV	CMD-C2D-C1D	2.52	127.31	124.17

Continued on next page...

Continued from previous page...

Mol	Chain	Res	Type	Atoms	Z	Observed(°)	Ideal(°)
2	D	600[B]	LBV	CMD-C2D-C1D	2.51	127.30	124.17
2	A	600[B]	LBV	CAC-C2C-C1C	2.50	129.44	125.01
2	A	600[A]	LBV	CBB-CAB-C3B	2.46	117.02	112.49
2	B	600[B]	LBV	O_A-C1A-C2A	-2.44	123.92	126.28
2	D	600[B]	LBV	CBA-CAA-C3A	-2.43	119.61	126.72
2	D	600[A]	LBV	C3D-C4D-N_D	2.40	108.90	106.19
2	C	600[A]	LBV	C1D-CHD-C4C	-2.40	122.22	128.08
2	C	600[B]	LBV	CHD-C1D-N_D	-2.39	120.93	126.06
2	A	600[B]	LBV	CAB-CBB-CGB	2.38	116.67	112.67
2	C	600[A]	LBV	CHB-C4A-C3A	-2.33	122.92	127.12
2	B	600[A]	LBV	CMD-C2D-C1D	2.33	127.07	124.17
2	C	600[B]	LBV	CHD-C4C-C3C	2.32	130.87	124.90
2	B	600[B]	LBV	C1C-N_C-C4C	2.32	110.87	106.51
2	B	600[B]	LBV	CAC-C2C-C1C	2.31	129.09	125.01
2	D	600[B]	LBV	CHB-C4A-C3A	-2.30	122.97	127.12
2	A	600[A]	LBV	CAC-C2C-C3C	-2.27	123.65	127.88
2	C	600[A]	LBV	O_D-C4D-C3D	-2.27	124.33	129.46
2	C	600[A]	LBV	CBB-CAB-C3B	2.26	116.65	112.49
2	A	600[A]	LBV	C3D-C4D-N_D	2.24	108.72	106.19
2	C	600[A]	LBV	CBA-CAA-C3A	-2.15	120.43	126.72
2	A	600[B]	LBV	CBA-CAA-C3A	-2.13	120.48	126.72
2	A	600[B]	LBV	C1C-N_C-C4C	2.12	110.51	106.51
2	D	600[B]	LBV	C1C-N_C-C4C	2.11	110.48	106.51
2	B	600[B]	LBV	CHD-C4C-C3C	2.07	130.23	124.90
2	B	600[B]	LBV	CBB-CAB-C3B	2.06	116.29	112.49
2	C	600[B]	LBV	CAB-CBB-CGB	2.04	116.10	112.67
2	C	600[B]	LBV	CHB-C4A-C3A	-2.03	123.46	127.12
2	C	600[B]	LBV	C1C-N_C-C4C	2.01	110.30	106.51
2	C	600[B]	LBV	CHD-C1D-C2D	2.00	130.92	126.95
2	D	600[A]	LBV	CHB-C4A-N_A	-2.00	123.68	130.40

There are no chirality outliers.

All (66) torsion outliers are listed below:

Mol	Chain	Res	Type	Atoms
2	D	600[B]	LBV	C2D-C1D-CHD-C4C
2	D	600[B]	LBV	N_D-C1D-CHD-C4C
2	D	600[B]	LBV	N_A-C4A-CHB-C1B
2	C	600[B]	LBV	C2D-C1D-CHD-C4C
2	C	600[B]	LBV	N_D-C1D-CHD-C4C
2	C	600[B]	LBV	C2A-C3A-CAA-CBA
2	C	600[B]	LBV	C4A-C3A-CAA-CBA

Continued on next page...

Continued from previous page...

Mol	Chain	Res	Type	Atoms
2	C	600[B]	LBV	C2B-C3B-CAB-CBB
2	C	600[B]	LBV	C4B-C3B-CAB-CBB
2	C	600[B]	LBV	N_A-C4A-CHB-C1B
2	C	600[B]	LBV	C3C-C4C-CHD-C1D
2	B	600[A]	LBV	C2A-C3A-CAA-CBA
2	B	600[A]	LBV	C4A-C3A-CAA-CBA
2	B	600[A]	LBV	N_A-C4A-CHB-C1B
2	B	600[A]	LBV	C3C-C4C-CHD-C1D
2	B	600[A]	LBV	N_C-C4C-CHD-C1D
2	C	600[A]	LBV	C2A-C3A-CAA-CBA
2	C	600[A]	LBV	C4A-C3A-CAA-CBA
2	C	600[A]	LBV	N_A-C4A-CHB-C1B
2	A	600[A]	LBV	C4A-C3A-CAA-CBA
2	A	600[A]	LBV	N_A-C4A-CHB-C1B
2	A	600[A]	LBV	C3C-C4C-CHD-C1D
2	A	600[A]	LBV	N_C-C4C-CHD-C1D
2	B	600[B]	LBV	C2A-C3A-CAA-CBA
2	B	600[B]	LBV	C4A-C3A-CAA-CBA
2	B	600[B]	LBV	N_A-C4A-CHB-C1B
2	B	600[B]	LBV	C3C-C4C-CHD-C1D
2	B	600[B]	LBV	N_C-C4C-CHD-C1D
2	A	600[B]	LBV	C2B-C1B-CHB-C4A
2	A	600[B]	LBV	N_B-C1B-CHB-C4A
2	A	600[B]	LBV	C2A-C3A-CAA-CBA
2	A	600[B]	LBV	C4A-C3A-CAA-CBA
2	A	600[B]	LBV	C3C-C4C-CHD-C1D
2	A	600[B]	LBV	N_C-C4C-CHD-C1D
2	D	600[A]	LBV	C2A-C3A-CAA-CBA
2	D	600[A]	LBV	C4A-C3A-CAA-CBA
2	D	600[A]	LBV	N_A-C4A-CHB-C1B
2	D	600[A]	LBV	C3C-C4C-CHD-C1D
2	D	600[A]	LBV	N_C-C4C-CHD-C1D
2	B	600[B]	LBV	C2D-C1D-CHD-C4C
2	A	600[B]	LBV	C2D-C1D-CHD-C4C
2	A	600[B]	LBV	C1C-C2C-CAC-CBC
2	D	600[B]	LBV	C2C-CAC-CBC-CGC
2	C	600[A]	LBV	C2C-CAC-CBC-CGC
2	A	600[B]	LBV	C2C-CAC-CBC-CGC
2	C	600[A]	LBV	N_C-C1C-CHC-C4B
2	B	600[B]	LBV	C1C-C2C-CAC-CBC
2	B	600[B]	LBV	C3C-C2C-CAC-CBC
2	A	600[B]	LBV	C3C-C2C-CAC-CBC

Continued on next page...

Continued from previous page...

Mol	Chain	Res	Type	Atoms
2	D	600[B]	LBV	N_C-C4C-CHD-C1D
2	C	600[B]	LBV	N_C-C4C-CHD-C1D
2	C	600[A]	LBV	N_C-C4C-CHD-C1D
2	D	600[B]	LBV	C3C-C4C-CHD-C1D
2	C	600[A]	LBV	C3C-C4C-CHD-C1D
2	B	600[B]	LBV	N_D-C1D-CHD-C4C
2	A	600[B]	LBV	N_D-C1D-CHD-C4C
2	D	600[B]	LBV	C4D-C3D-CAD-CBD
2	D	600[B]	LBV	C2D-C3D-CAD-CBD
2	D	600[A]	LBV	C2C-CAC-CBC-CGC
2	B	600[B]	LBV	C2B-C3B-CAB-CBB
2	B	600[B]	LBV	C4B-C3B-CAB-CBB
2	C	600[A]	LBV	C2C-C1C-CHC-C4B
2	D	600[A]	LBV	C1C-C2C-CAC-CBC
2	D	600[A]	LBV	C3C-C2C-CAC-CBC
2	A	600[A]	LBV	C3A-C4A-CHB-C1B
2	D	600[A]	LBV	C3A-C4A-CHB-C1B

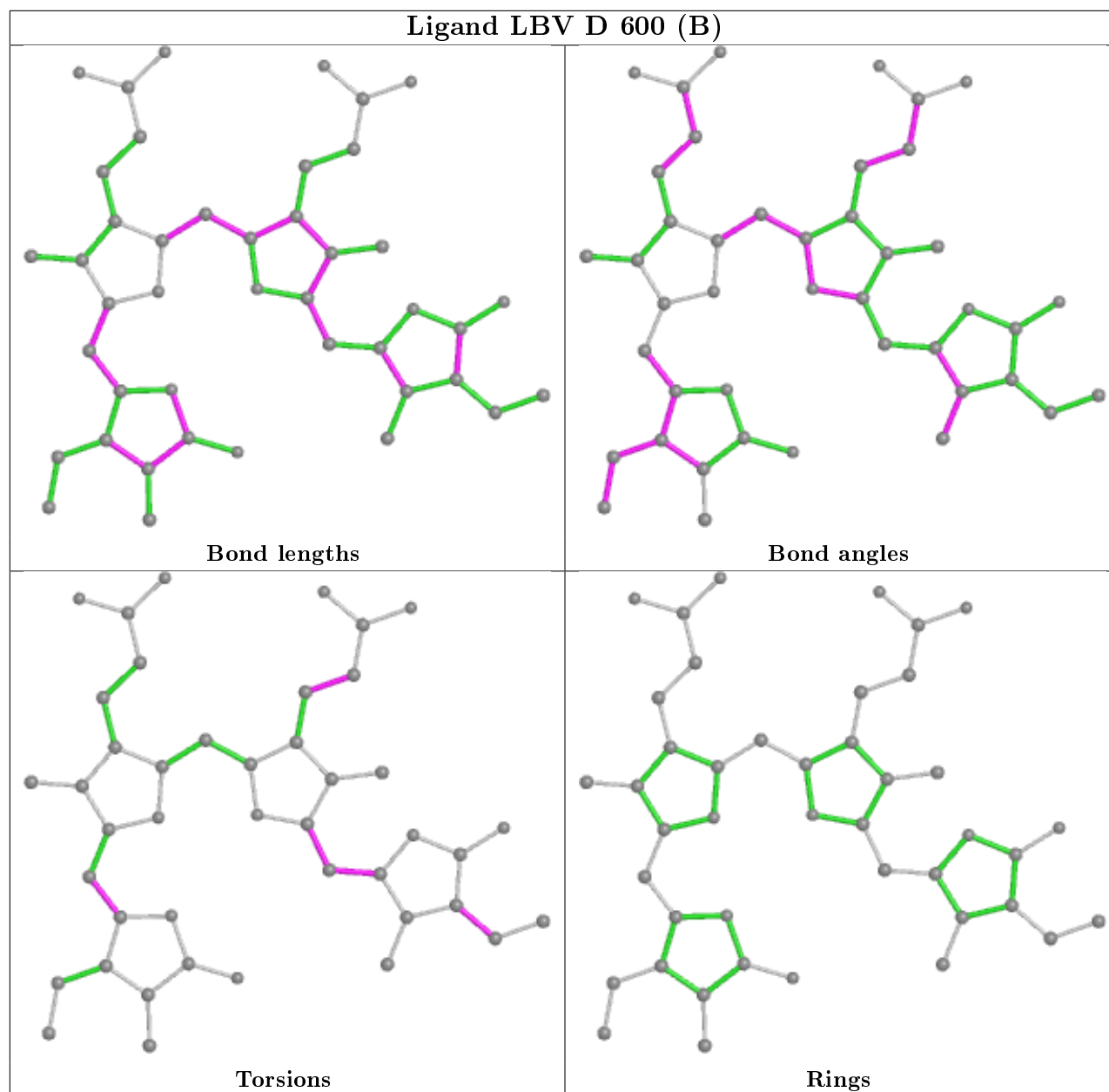
There are no ring outliers.

8 monomers are involved in 82 short contacts:

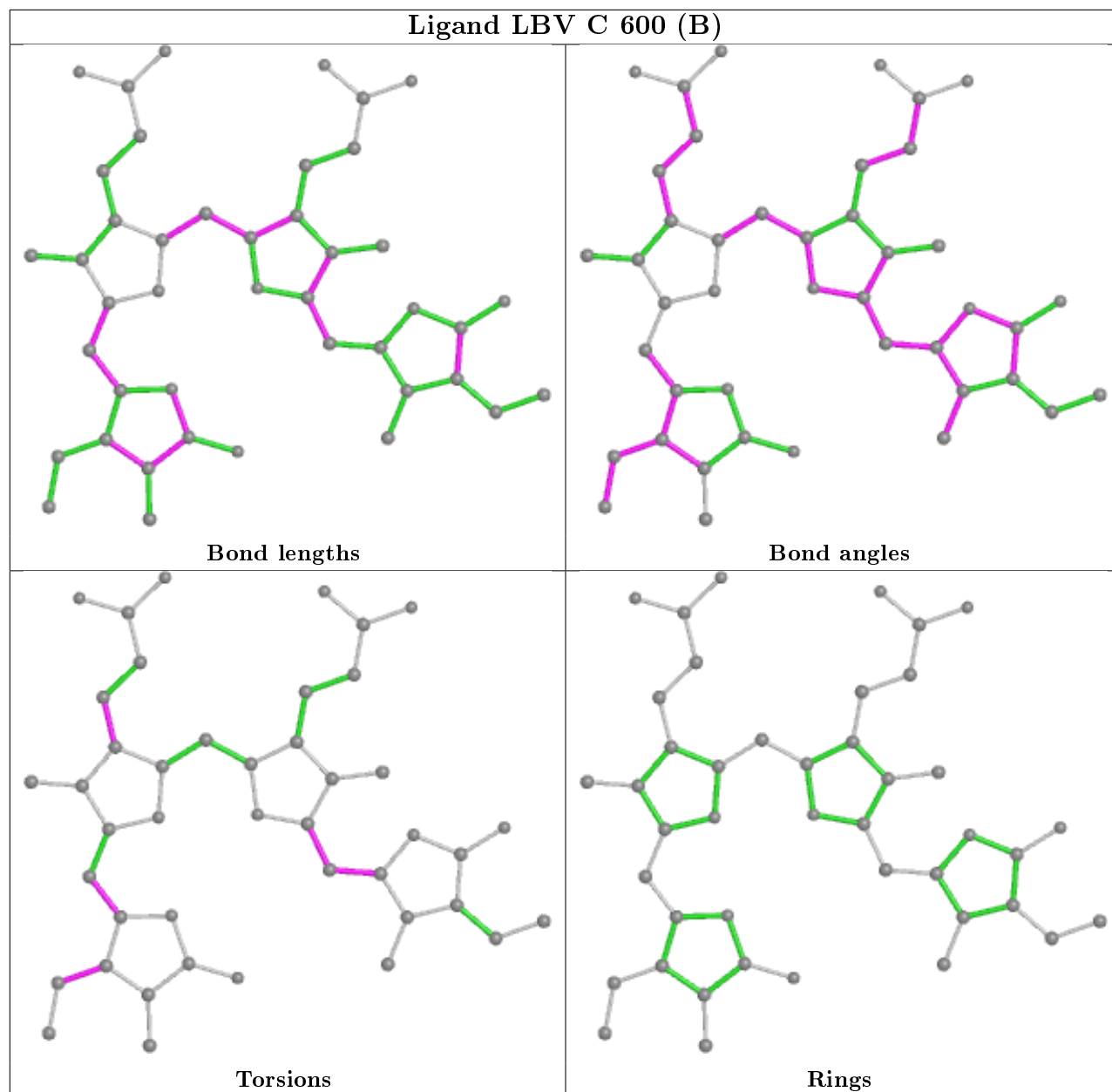
Mol	Chain	Res	Type	Clashes	Symm-Clashes
2	D	600[B]	LBV	13	0
2	C	600[B]	LBV	15	0
2	B	600[A]	LBV	7	0
2	C	600[A]	LBV	7	0
2	A	600[A]	LBV	12	0
2	B	600[B]	LBV	11	0
2	A	600[B]	LBV	9	0
2	D	600[A]	LBV	8	0

The following is a two-dimensional graphical depiction of Mogul quality analysis of bond lengths, bond angles, torsion angles, and ring geometry for all instances of the Ligand of Interest. In addition, ligands with molecular weight > 250 and outliers as shown on the validation Tables will also be included. For torsion angles, if less than 5% of the Mogul distribution of torsion angles is within 10 degrees of the torsion angle in question, then that torsion angle is considered an outlier. Any bond that is central to one or more torsion angles identified as an outlier by Mogul will be highlighted in the graph. For rings, the root-mean-square deviation (RMSD) between the ring in question and similar rings identified by Mogul is calculated over all ring torsion angles. If the average RMSD is greater than 60 degrees and the minimal RMSD between the ring in question and any Mogul-identified rings is also greater than 60 degrees, then that ring is considered an outlier. The outliers are highlighted in purple. The color gray indicates Mogul did not find sufficient

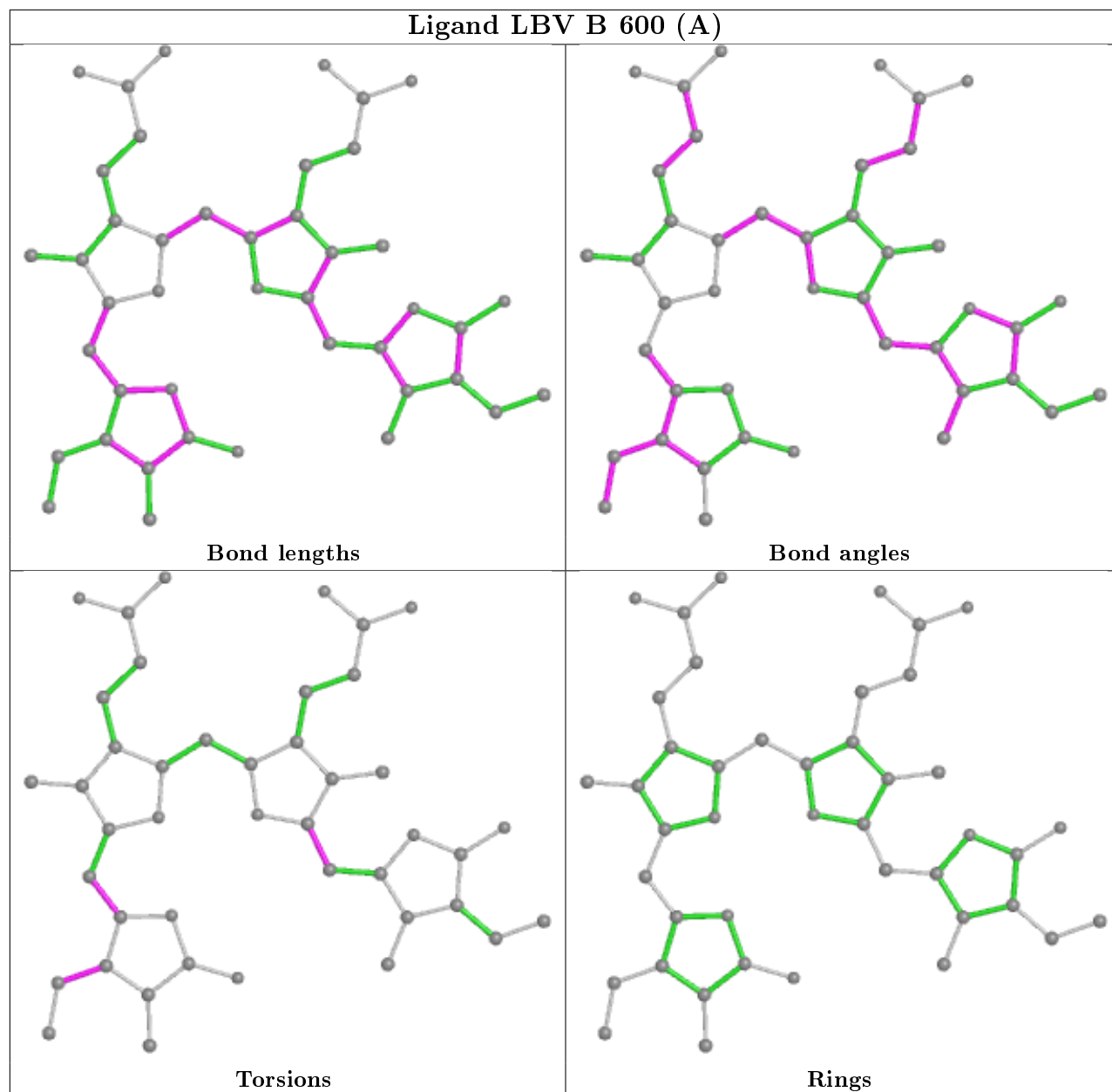
equivalents in the CSD to analyse the geometry.



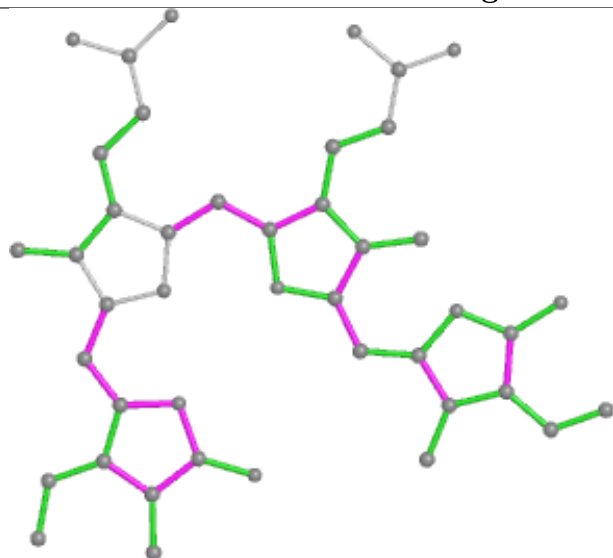
Ligand LBV C 600 (B)



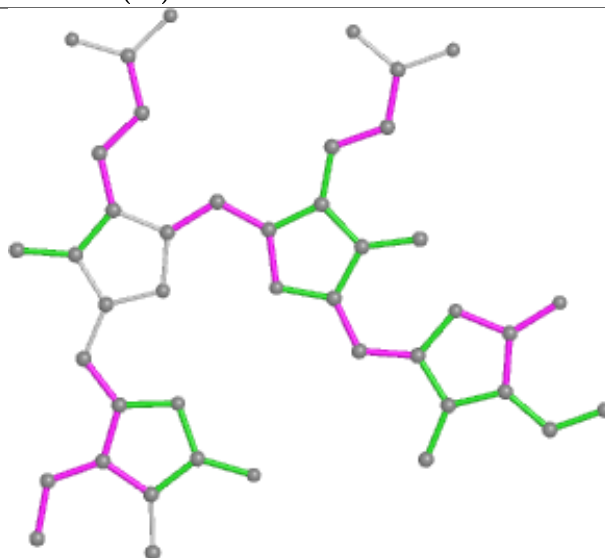
Ligand LBV B 600 (A)



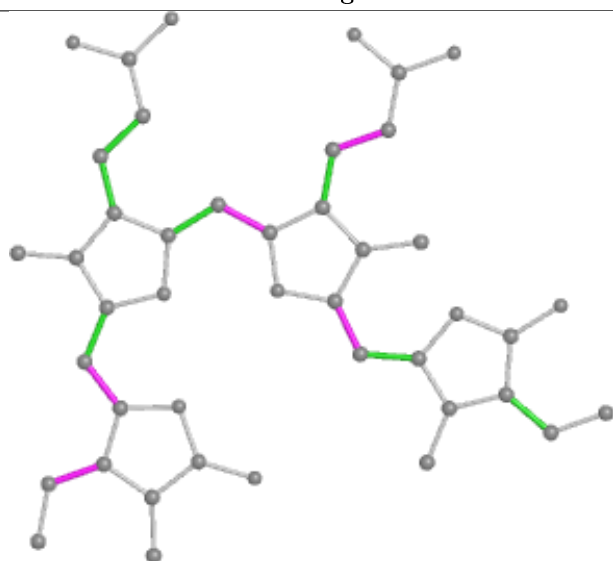
Ligand LBV C 600 (A)



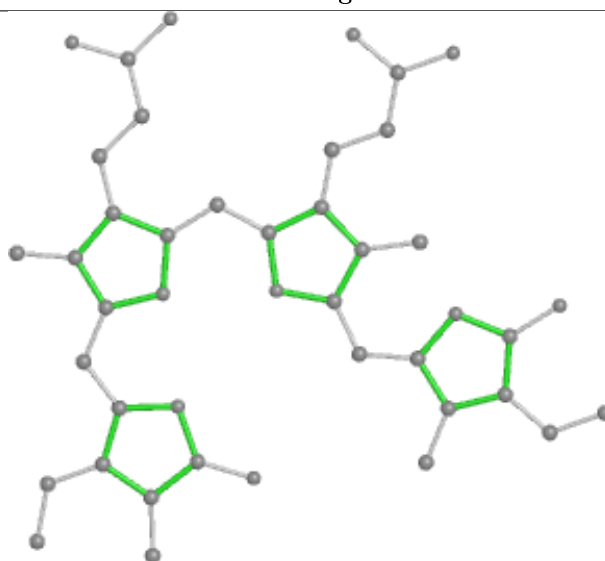
Bond lengths



Bond angles

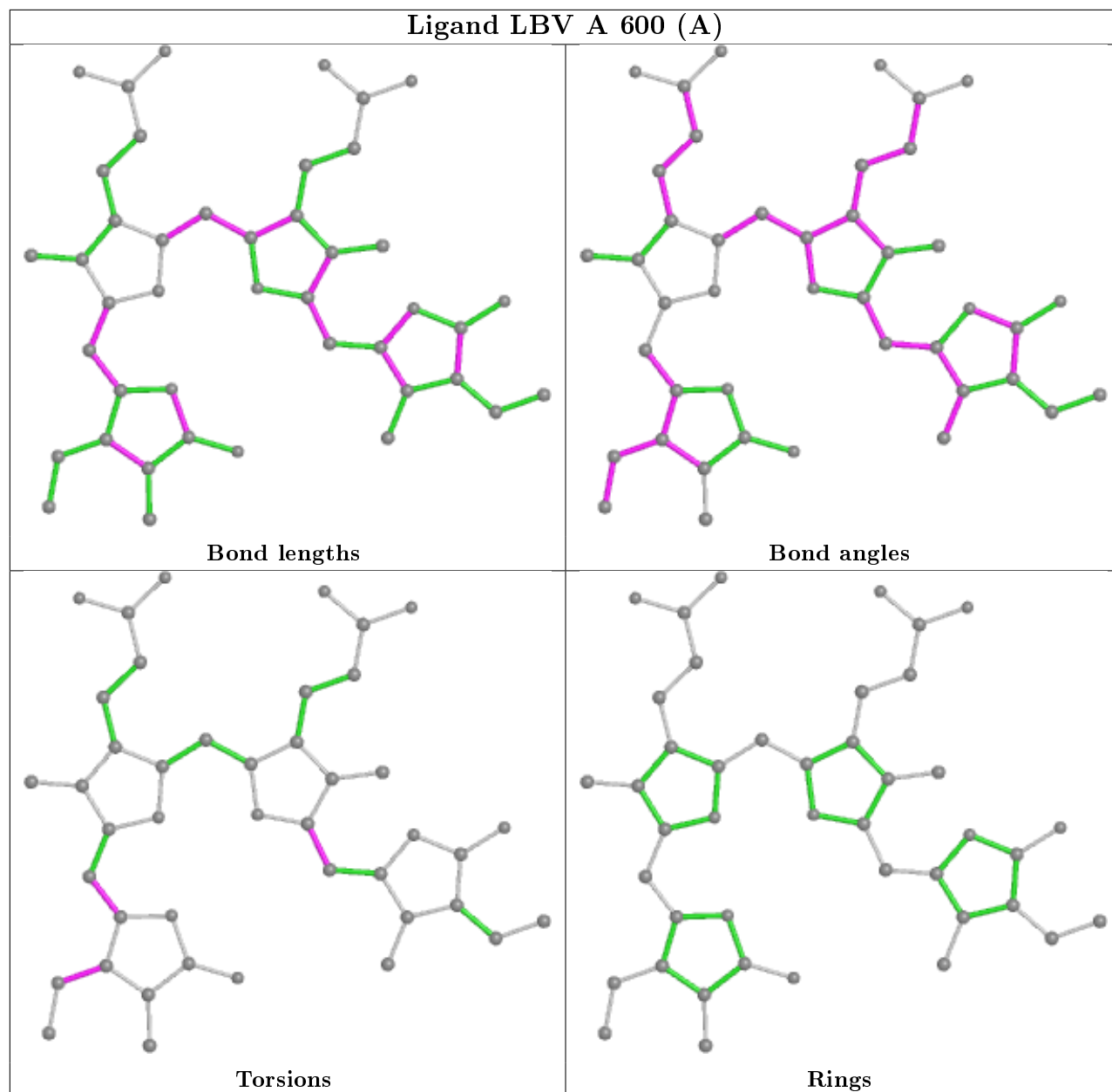


Torsions

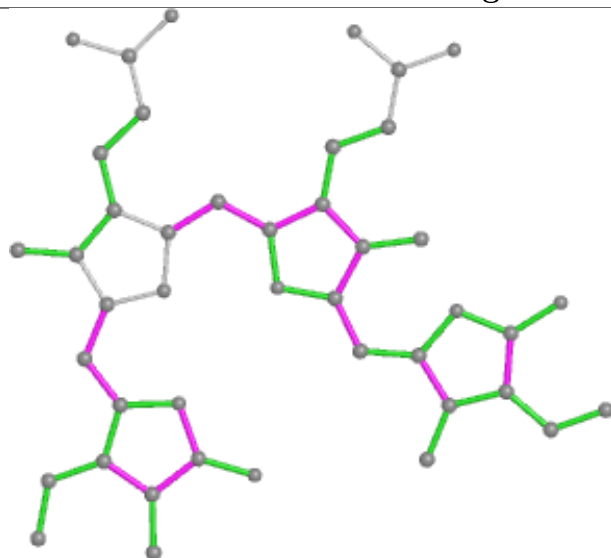


Rings

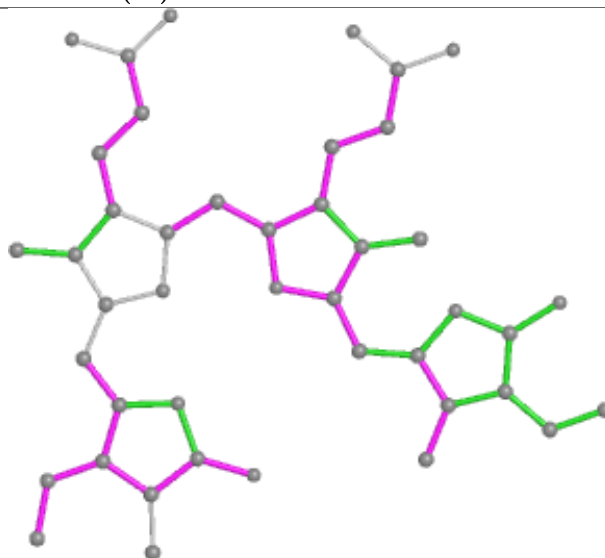
Ligand LBV A 600 (A)



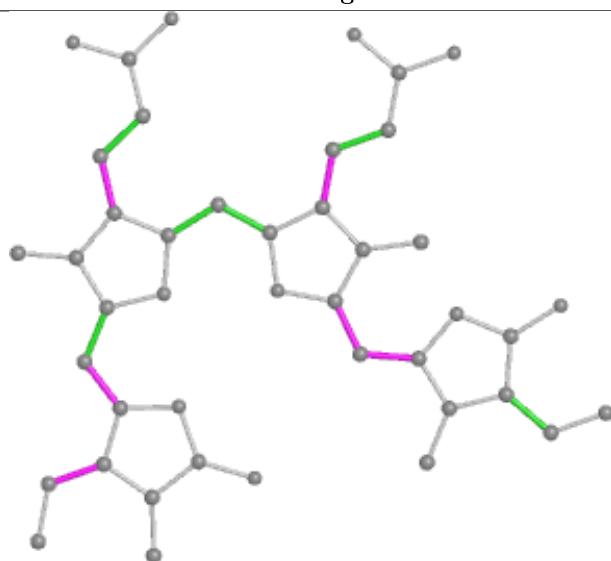
Ligand LBV B 600 (B)



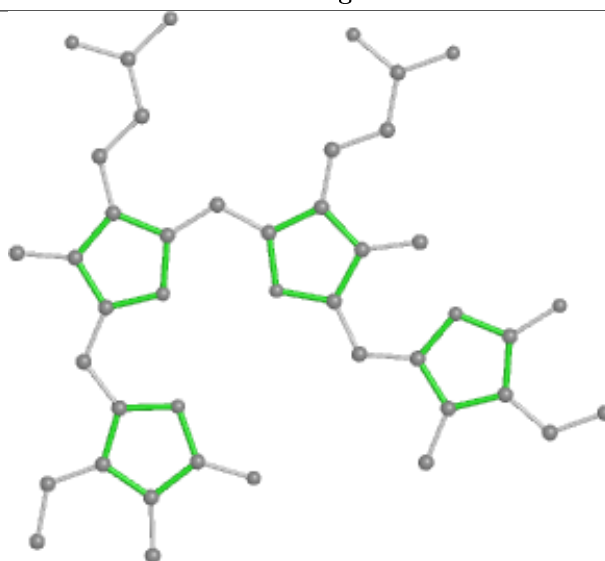
Bond lengths



Bond angles

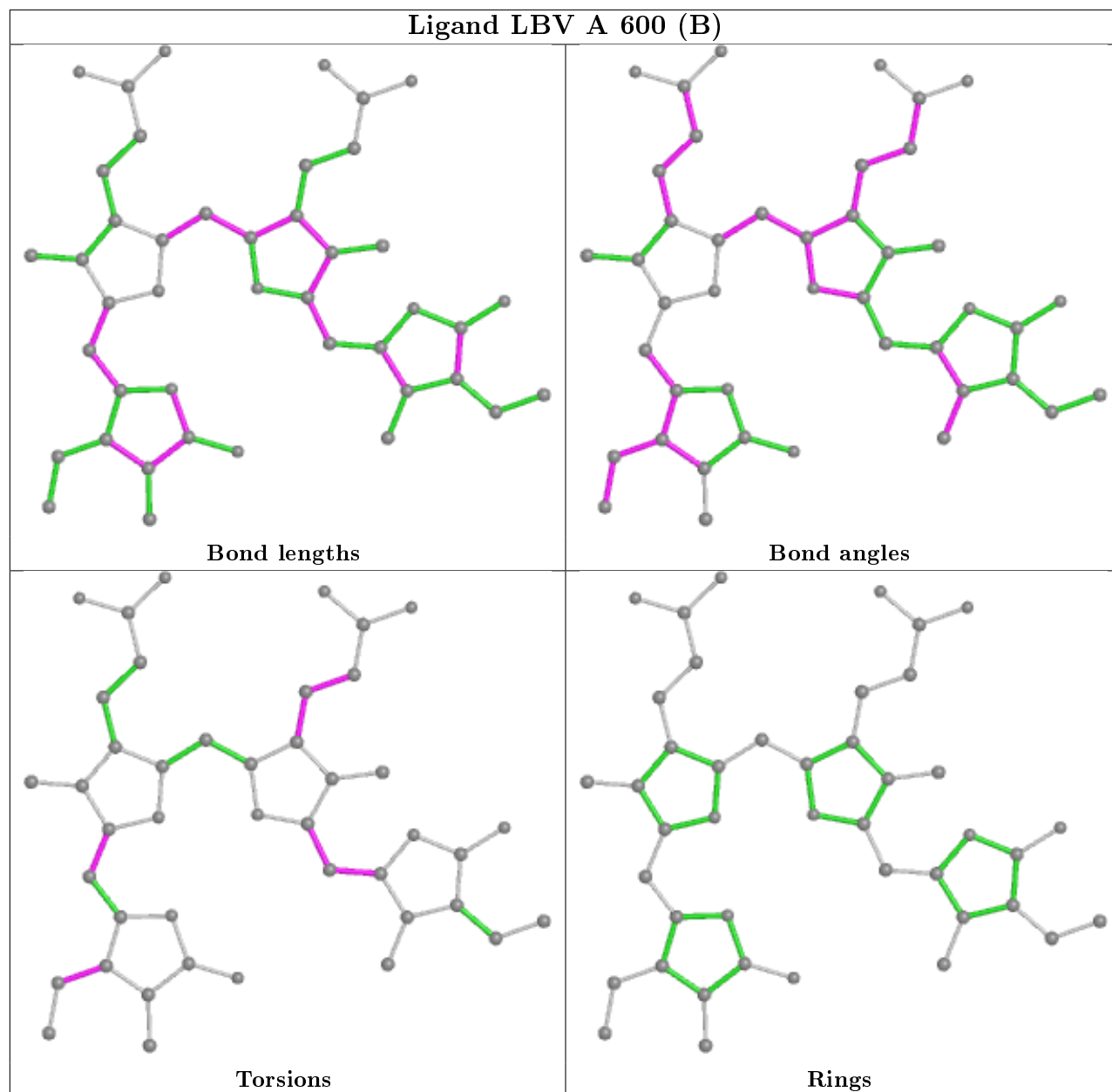


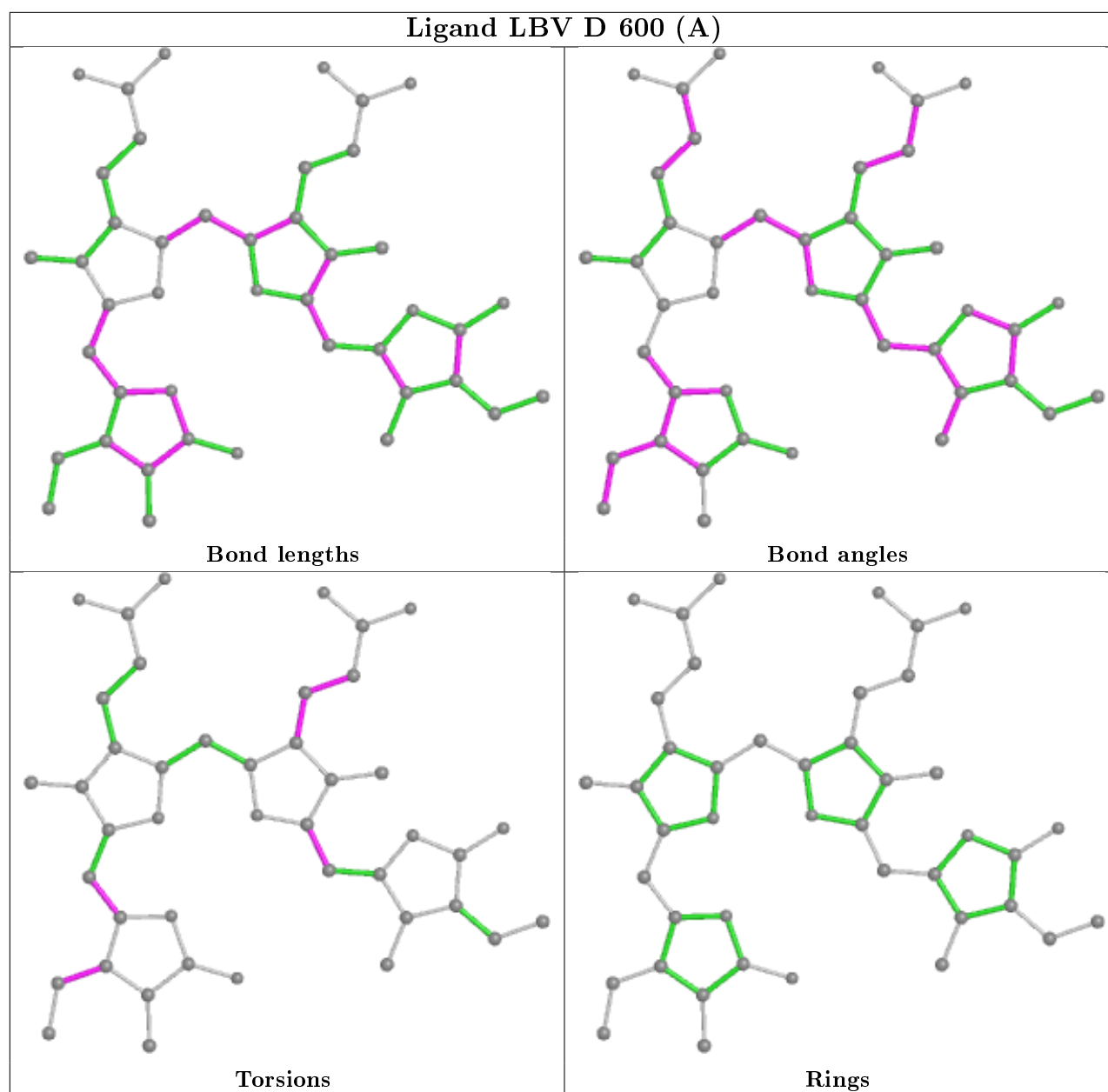
Torsions



Rings

Ligand LBV A 600 (B)





5.7 Other polymers [i](#)

There are no such residues in this entry.

5.8 Polymer linkage issues [i](#)

There are no chain breaks in this entry.

6 Fit of model and data ⓘ

6.1 Protein, DNA and RNA chains ⓘ

In the following table, the column labelled ‘#RSRZ> 2’ contains the number (and percentage) of RSRZ outliers, followed by percent RSRZ outliers for the chain as percentile scores relative to all X-ray entries and entries of similar resolution. The OWAB column contains the minimum, median, 95th percentile and maximum values of the occupancy-weighted average B-factor per residue. The column labelled ‘Q< 0.9’ lists the number of (and percentage) of residues with an average occupancy less than 0.9.

Mol	Chain	Analysed	<RSRZ>	#RSRZ>2	OWAB(Å ²)	Q<0.9
1	A	492/523 (94%)	-0.36	7 (1%) 75 75	52, 88, 146, 197	0
1	B	485/523 (92%)	-0.31	8 (1%) 72 70	52, 94, 157, 200	0
1	C	482/523 (92%)	-0.05	13 (2%) 54 52	76, 129, 171, 202	0
1	D	478/523 (91%)	-0.04	13 (2%) 54 52	76, 134, 173, 210	0
All	All	1937/2092 (92%)	-0.19	41 (2%) 63 62	52, 117, 165, 210	0

All (41) RSRZ outliers are listed below:

Mol	Chain	Res	Type	RSRZ
1	D	131	ALA	4.9
1	C	453	GLY	4.2
1	A	432	GLU	3.8
1	C	462	ASP	3.7
1	B	66	PRO	3.6
1	B	461	ASP	3.6
1	D	47	HIS	3.5
1	C	65	GLU	3.3
1	D	193	GLU	3.2
1	A	503	GLU	3.1
1	A	66	PRO	3.0
1	A	504	HIS	3.0
1	D	137	PRO	3.0
1	B	67	THR	2.9
1	B	7	PRO	2.9
1	A	461	ASP	2.9
1	C	450	ALA	2.8
1	B	451	TRP	2.8
1	C	461	ASP	2.8
1	D	463	LEU	2.6
1	B	133	ASP	2.5

Continued on next page...

Continued from previous page...

Mol	Chain	Res	Type	RSRZ
1	C	452	GLY	2.5
1	C	454	ALA	2.5
1	C	42	LEU	2.5
1	D	65	GLU	2.4
1	D	451	TRP	2.4
1	D	289	CYS	2.4
1	C	449	VAL	2.3
1	C	43	THR	2.3
1	C	448	GLU	2.2
1	C	124	LEU	2.2
1	D	42	LEU	2.2
1	D	272	SER	2.1
1	D	447	LEU	2.1
1	B	432	GLU	2.1
1	D	124	LEU	2.1
1	D	43	THR	2.1
1	B	462	ASP	2.0
1	A	452	GLY	2.0
1	A	453	GLY	2.0
1	C	292	GLN	2.0

6.2 Non-standard residues in protein, DNA, RNA chains [i](#)

There are no non-standard protein/DNA/RNA residues in this entry.

6.3 Carbohydrates [i](#)

There are no carbohydrates in this entry.

6.4 Ligands [i](#)

In the following table, the Atoms column lists the number of modelled atoms in the group and the number defined in the chemical component dictionary. The B-factors column lists the minimum, median, 95th percentile and maximum values of B factors of atoms in the group. The column labelled 'Q< 0.9' lists the number of atoms with occupancy less than 0.9.

Mol	Type	Chain	Res	Atoms	RSCC	RSR	B-factors(Å ²)	Q<0.9
2	LBV	D	600[B]	43/43	0.83	0.34	118,131,158,168	43
2	LBV	D	600[A]	43/43	0.83	0.34	109,121,151,163	43
2	LBV	C	600[A]	43/43	0.87	0.31	93,110,144,149	43

Continued on next page...

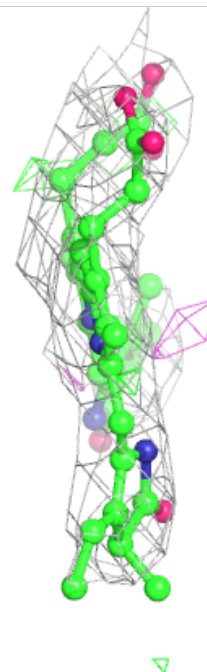
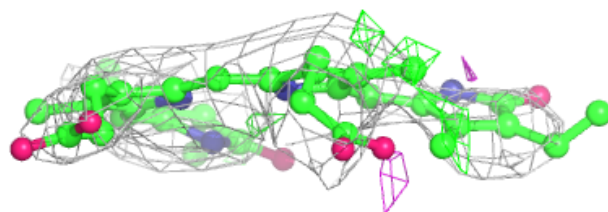
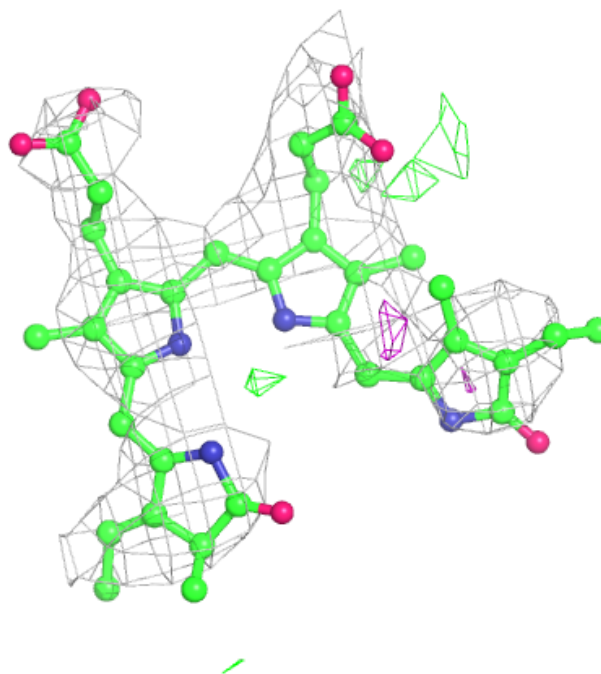
Continued from previous page...

Mol	Type	Chain	Res	Atoms	RSCC	RSR	B-factors(\AA^2)	Q<0.9
2	LBV	C	600[B]	43/43	0.87	0.31	98,115,141,142	43
2	LBV	A	600[A]	43/43	0.95	0.17	60,71,81,93	43
2	LBV	B	600[B]	43/43	0.95	0.18	58,69,80,93	43
2	LBV	A	600[B]	43/43	0.95	0.17	63,71,76,94	43
2	LBV	B	600[A]	43/43	0.95	0.18	66,82,89,95	43

The following is a graphical depiction of the model fit to experimental electron density of all instances of the Ligand of Interest. In addition, ligands with molecular weight > 250 and outliers as shown on the geometry validation Tables will also be included. Each fit is shown from different orientation to approximate a three-dimensional view.

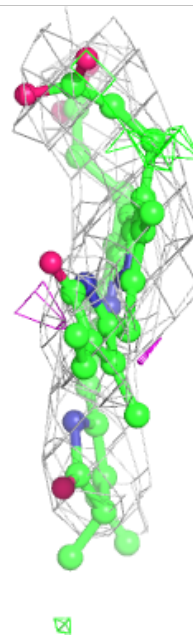
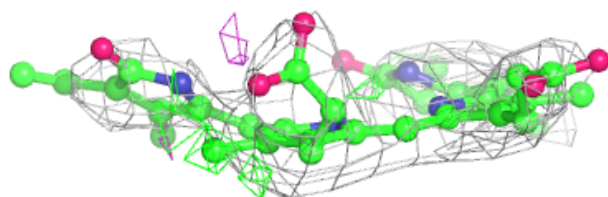
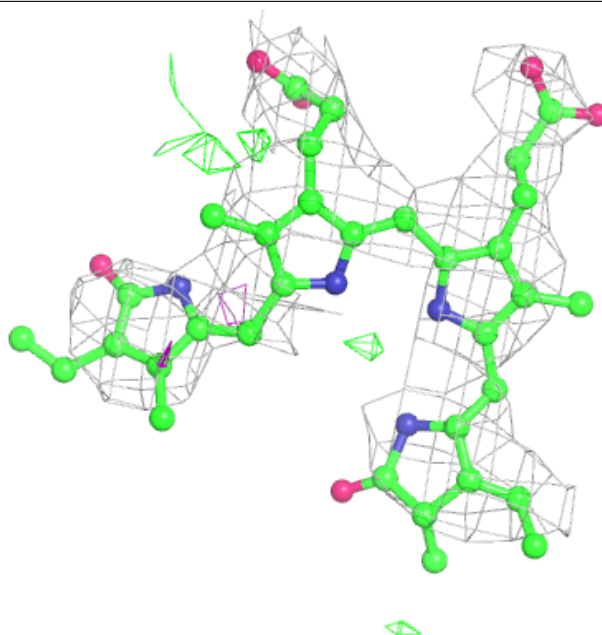
Electron density around LBV D 600 (B):

$2mF_o - DF_c$ (at 0.7 rmsd) in gray
 $mF_o - DF_c$ (at 3 rmsd) in purple (negative)
and green (positive)



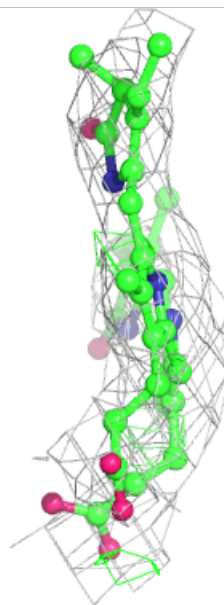
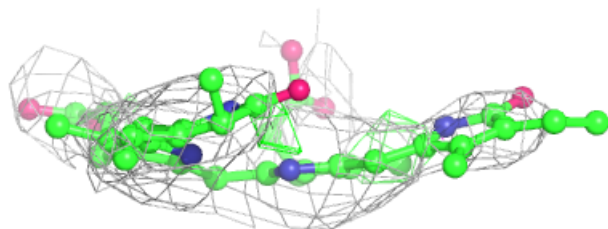
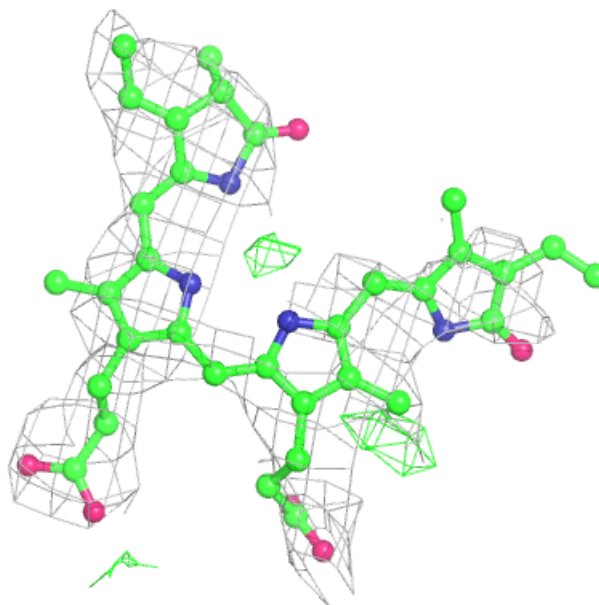
Electron density around LBV D 600 (A):

$2mF_o-DF_c$ (at 0.7 rmsd) in gray
 mF_o-DF_c (at 3 rmsd) in purple (negative)
and green (positive)



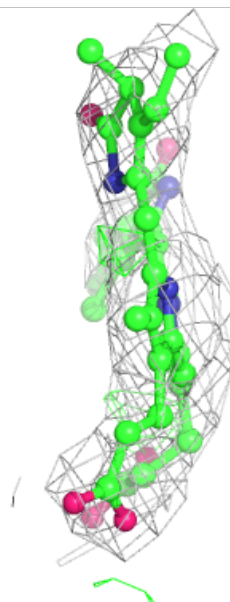
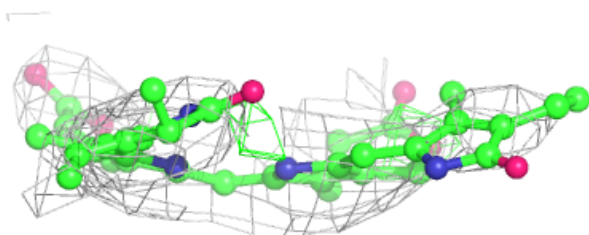
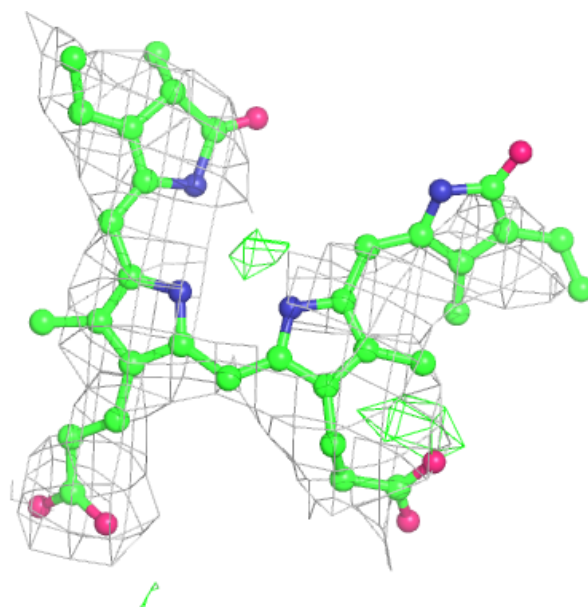
Electron density around LBV C 600 (A):

$2mF_o-DF_c$ (at 0.7 rmsd) in gray
 mF_o-DF_c (at 3 rmsd) in purple (negative)
and green (positive)



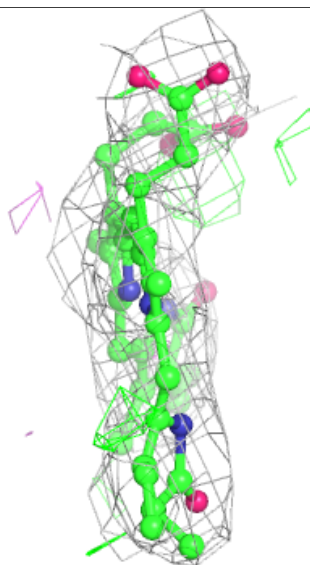
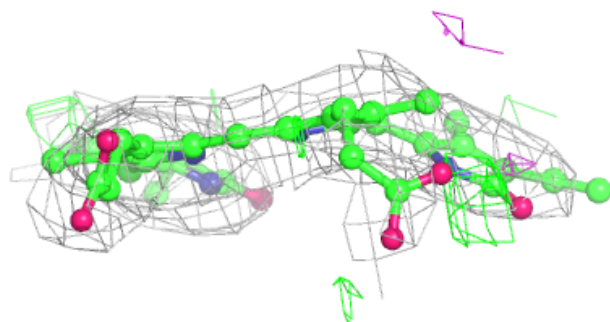
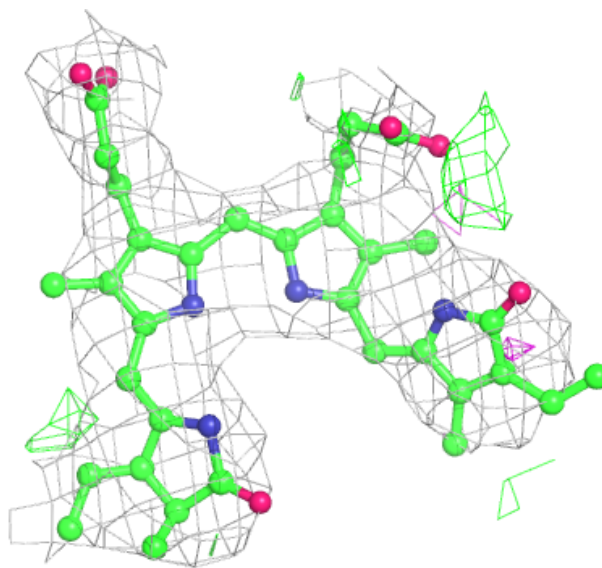
Electron density around LBV C 600 (B):

$2mF_o-DF_c$ (at 0.7 rmsd) in gray
 mF_o-DF_c (at 3 rmsd) in purple (negative)
and green (positive)



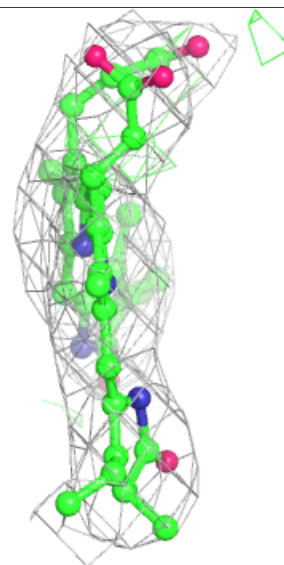
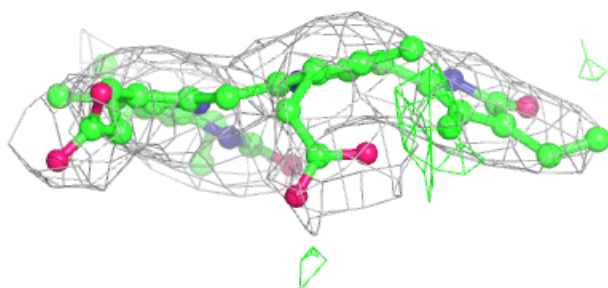
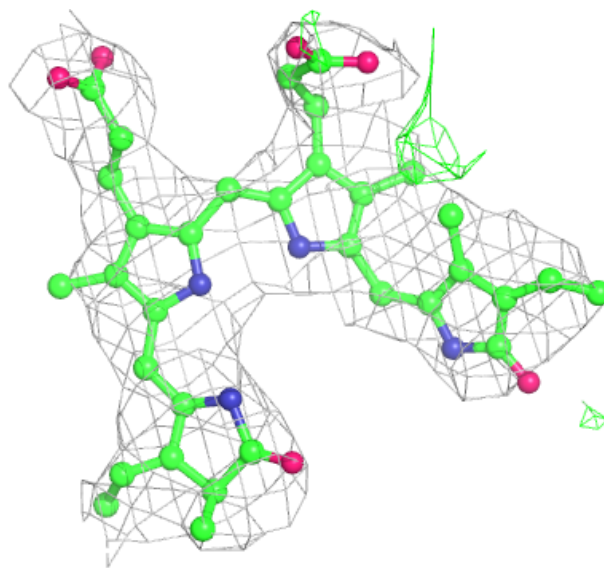
Electron density around LBV A 600 (A):

$2mF_o-DF_c$ (at 0.7 rmsd) in gray
 mF_o-DF_c (at 3 rmsd) in purple (negative)
and green (positive)



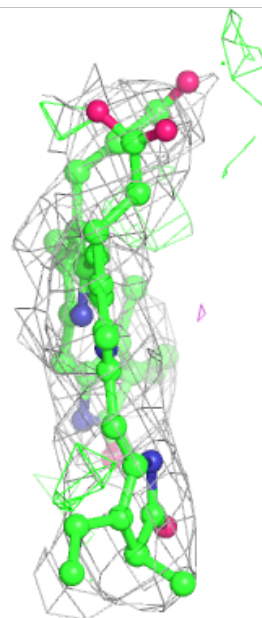
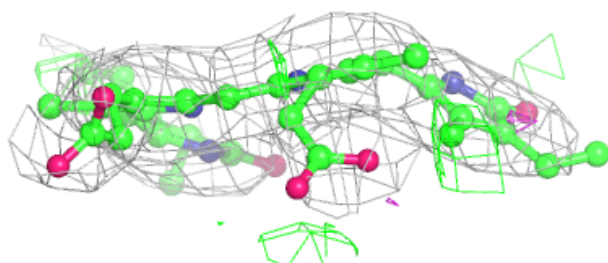
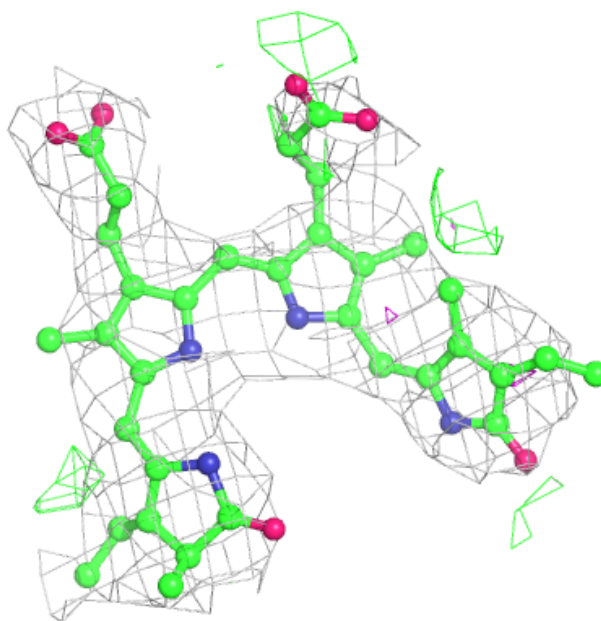
Electron density around LBV B 600 (B):

$2mF_o-DF_c$ (at 0.7 rmsd) in gray
 mF_o-DF_c (at 3 rmsd) in purple (negative)
and green (positive)



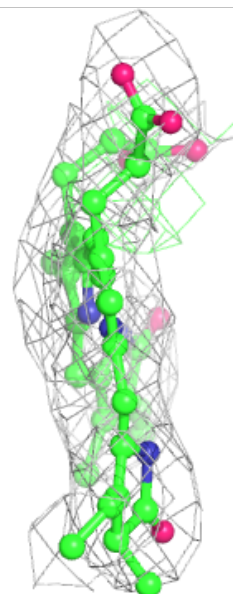
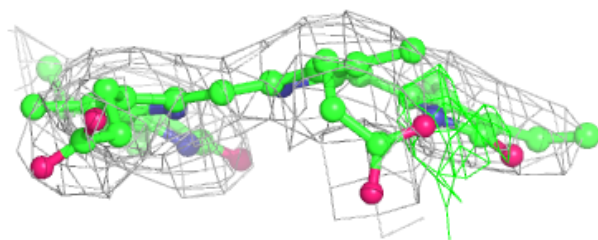
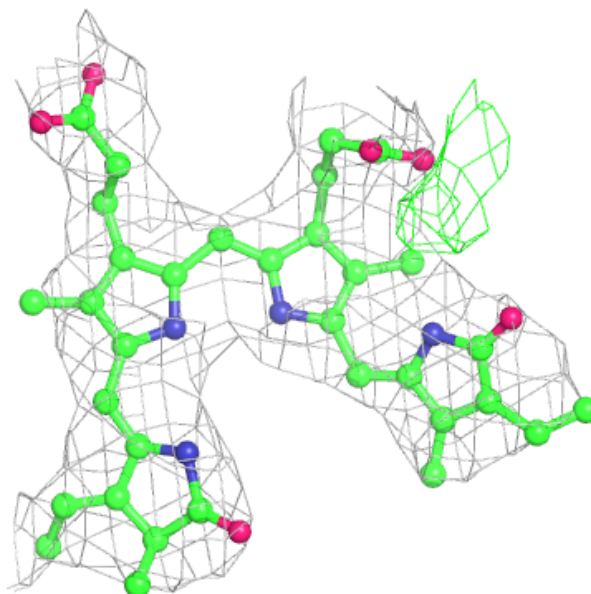
Electron density around LBV A 600 (B):

$2mF_o-DF_c$ (at 0.7 rmsd) in gray
 mF_o-DF_c (at 3 rmsd) in purple (negative)
and green (positive)



Electron density around LBV B 600 (A):

$2mF_o-DF_c$ (at 0.7 rmsd) in gray
 mF_o-DF_c (at 3 rmsd) in purple (negative)
and green (positive)



6.5 Other polymers ⓘ

There are no such residues in this entry.