



# Full wwPDB X-ray Structure Validation Report ⓘ

May 22, 2020 – 01:07 am BST

PDB ID : 3NN1  
Title : Structure of chlorite dismutase from Candidatus Nitrospira defluvii in complex with imidazole  
Authors : Kostan, J.; Sjoebloom, B.; Maixner, F.; Mlynek, G.; Furmueller, P.G.; Obinger, C.; Wagner, M.; Daims, H.; Djinovic-Carugo, K.  
Deposited on : 2010-06-23  
Resolution : 1.85 Å(reported)

This is a Full wwPDB X-ray Structure Validation Report for a publicly released PDB entry.

We welcome your comments at [validation@mail.wwpdb.org](mailto:validation@mail.wwpdb.org)

A user guide is available at

<https://www.wwpdb.org/validation/2017/XrayValidationReportHelp>

with specific help available everywhere you see the ⓘ symbol.

---

The following versions of software and data (see [references ⓘ](#)) were used in the production of this report:

MolProbity : 4.02b-467  
Mogul : 1.8.5 (274361), CSD as541be (2020)  
Xtriage (Phenix) : 1.13  
EDS : 2.11  
buster-report : 1.1.7 (2018)  
Percentile statistics : 20191225.v01 (using entries in the PDB archive December 25th 2019)  
Refmac : 5.8.0158  
CCP4 : 7.0.044 (Gargrove)  
Ideal geometry (proteins) : Engh & Huber (2001)  
Ideal geometry (DNA, RNA) : Parkinson et al. (1996)  
Validation Pipeline (wwPDB-VP) : 2.11

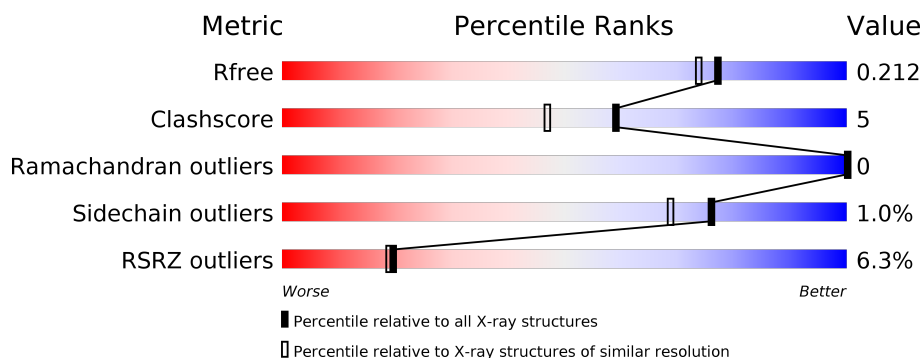
# 1 Overall quality at a glance ⓘ

The following experimental techniques were used to determine the structure:

## *X-RAY DIFFRACTION*

The reported resolution of this entry is 1.85 Å.

Percentile scores (ranging between 0-100) for global validation metrics of the entry are shown in the following graphic. The table shows the number of entries on which the scores are based.



Metric	Whole archive (#Entries)	Similar resolution (#Entries, resolution range(Å))
$R_{free}$	130704	2469 (1.86-1.86)
Clashscore	141614	2625 (1.86-1.86)
Ramachandran outliers	138981	2592 (1.86-1.86)
Sidechain outliers	138945	2592 (1.86-1.86)
RSRZ outliers	127900	2436 (1.86-1.86)

The table below summarises the geometric issues observed across the polymeric chains and their fit to the electron density. The red, orange, yellow and green segments on the lower bar indicate the fraction of residues that contain outliers for  $\geq 3$ , 2, 1 and 0 types of geometric quality criteria respectively. A grey segment represents the fraction of residues that are not modelled. The numeric value for each fraction is indicated below the corresponding segment, with a dot representing fractions  $\leq 5\%$ . The upper red bar (where present) indicates the fraction of residues that have poor fit to the electron density. The numeric value is given above the bar.

Mol	Chain	Length	Quality of chain
1	A	241	<div> <div>3%</div> <div>89%</div> <div>10%</div> <div>.</div> </div>
1	B	241	<div> <div>8%</div> <div>93%</div> <div>5%</div> <div>.</div> </div>
1	C	241	<div> <div>3%</div> <div>89%</div> <div>9%</div> <div>..</div> </div>
1	D	241	<div> <div>7%</div> <div>88%</div> <div>11%</div> <div>.</div> </div>
1	E	241	<div> <div>10%</div> <div>91%</div> <div>7%</div> <div>.</div> </div>

## 2 Entry composition

There are 6 unique types of molecules in this entry. The entry contains 10987 atoms, of which 0 are hydrogens and 0 are deuteriums.

In the tables below, the ZeroOcc column contains the number of atoms modelled with zero occupancy, the AltConf column contains the number of residues with at least one atom in alternate conformation and the Trace column contains the number of residues modelled with at most 2 atoms.

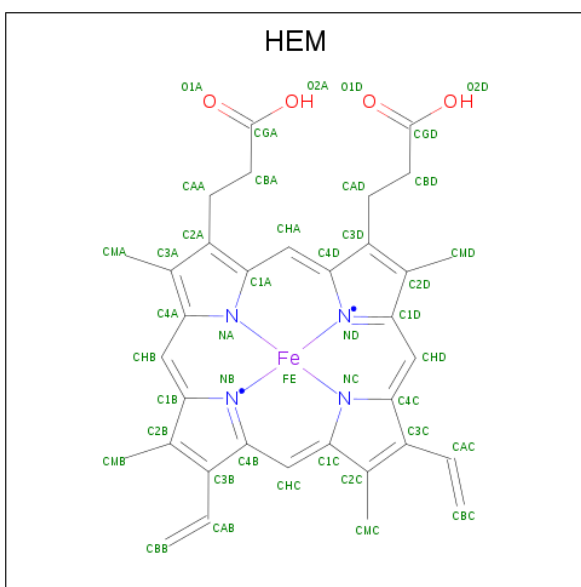
- Molecule 1 is a protein called Chlorite dismutase.

Mol	Chain	Residues	Atoms					ZeroOcc	AltConf	Trace
1	A	238	Total	C	N	O	S	0	4	0
			1958	1247	345	360	6			
1	B	238	Total	C	N	O	S	0	2	0
			1936	1235	337	358	6			
1	C	238	Total	C	N	O	S	0	4	0
			1958	1247	345	360	6			
1	D	238	Total	C	N	O	S	0	2	0
			1941	1238	340	357	6			
1	E	238	Total	C	N	O	S	0	1	0
			1930	1229	339	356	6			

There are 15 discrepancies between the modelled and reference sequences:

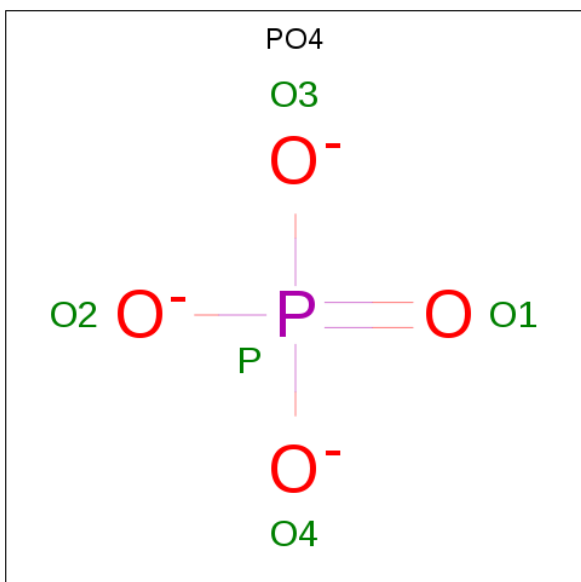
Chain	Residue	Modelled	Actual	Comment	Reference
A	-2	GLY	-	CLONING ARTIFACT	UNP B3U4H7
A	-1	ALA	-	CLONING ARTIFACT	UNP B3U4H7
A	0	MET	-	CLONING ARTIFACT	UNP B3U4H7
B	-2	GLY	-	CLONING ARTIFACT	UNP B3U4H7
B	-1	ALA	-	CLONING ARTIFACT	UNP B3U4H7
B	0	MET	-	CLONING ARTIFACT	UNP B3U4H7
C	-2	GLY	-	CLONING ARTIFACT	UNP B3U4H7
C	-1	ALA	-	CLONING ARTIFACT	UNP B3U4H7
C	0	MET	-	CLONING ARTIFACT	UNP B3U4H7
D	-2	GLY	-	CLONING ARTIFACT	UNP B3U4H7
D	-1	ALA	-	CLONING ARTIFACT	UNP B3U4H7
D	0	MET	-	CLONING ARTIFACT	UNP B3U4H7
E	-2	GLY	-	CLONING ARTIFACT	UNP B3U4H7
E	-1	ALA	-	CLONING ARTIFACT	UNP B3U4H7
E	0	MET	-	CLONING ARTIFACT	UNP B3U4H7

- Molecule 2 is PROTOPORPHYRIN IX CONTAINING FE (three-letter code: HEM) (formula:  $C_{34}H_{32}FeN_4O_4$ ).



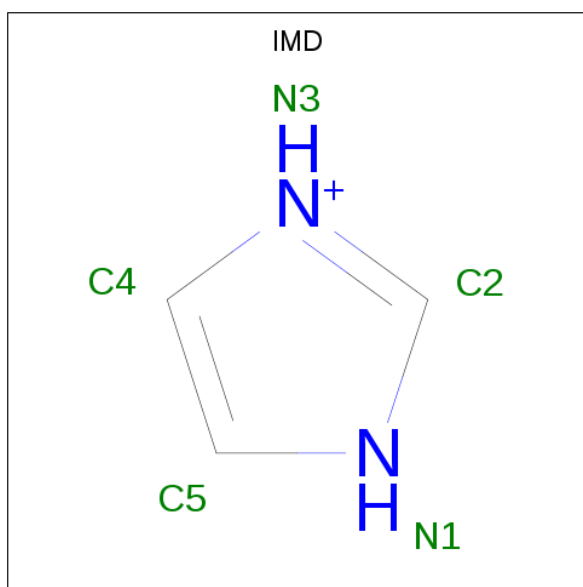
Mol	Chain	Residues	Atoms					ZeroOcc	AltConf
2	A	1	Total 43	C 34	Fe 1	N 4	O 4	0	0
2	B	1	Total 43	C 34	Fe 1	N 4	O 4	0	0
2	C	1	Total 43	C 34	Fe 1	N 4	O 4	0	0
2	D	1	Total 43	C 34	Fe 1	N 4	O 4	0	0
2	E	1	Total 43	C 34	Fe 1	N 4	O 4	0	0

- Molecule 3 is PHOSPHATE ION (three-letter code: PO4) (formula:  $O_4P$ ).



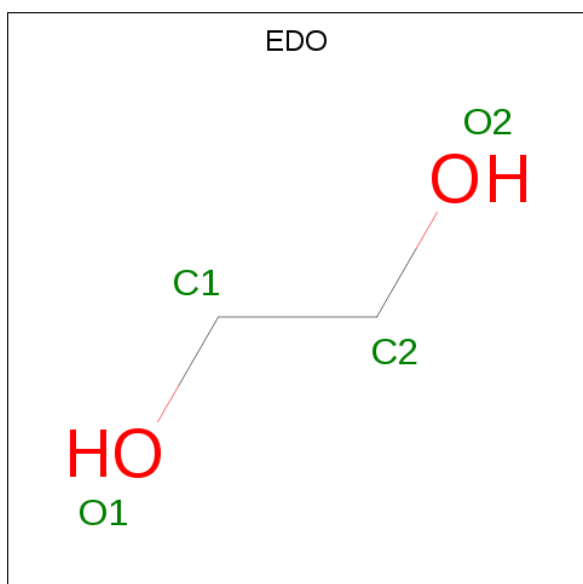
Mol	Chain	Residues	Atoms	ZeroOcc	AltConf
3	A	1	Total O P 5 4 1	0	0
3	A	1	Total O P 5 4 1	0	0
3	A	1	Total O P 5 4 1	0	0
3	B	1	Total O P 5 4 1	0	0
3	B	1	Total O P 5 4 1	0	0
3	B	1	Total O P 5 4 1	0	0
3	C	1	Total O P 5 4 1	0	0
3	C	1	Total O P 5 4 1	0	0
3	D	1	Total O P 5 4 1	0	0
3	D	1	Total O P 5 4 1	0	0
3	D	1	Total O P 5 4 1	0	0
3	E	1	Total O P 5 4 1	0	0
3	E	1	Total O P 5 4 1	0	0
3	E	1	Total O P 5 4 1	0	0
3	E	1	Total O P 5 4 1	0	0

- Molecule 4 is IMIDAZOLE (three-letter code: IMD) (formula: C<sub>3</sub>H<sub>5</sub>N<sub>2</sub>).



Mol	Chain	Residues	Atoms			ZeroOcc	AltConf
4	A	1	Total	C	N	0	0
			5	3	2		
4	B	1	Total	C	N	0	0
			5	3	2		
4	C	1	Total	C	N	0	0
			5	3	2		
4	D	1	Total	C	N	0	0
			5	3	2		
4	E	1	Total	C	N	0	0
			5	3	2		

- Molecule 5 is 1,2-ETHANEDIOL (three-letter code: EDO) (formula: C<sub>2</sub>H<sub>6</sub>O<sub>2</sub>).



Mol	Chain	Residues	Atoms	ZeroOcc	AltConf
5	A	1	Total C O 4 2 2	0	0
5	A	1	Total C O 4 2 2	0	0
5	B	1	Total C O 4 2 2	0	0
5	B	1	Total C O 4 2 2	0	0
5	C	1	Total C O 4 2 2	0	0
5	C	1	Total C O 4 2 2	0	0
5	D	1	Total C O 4 2 2	0	0
5	E	1	Total C O 4 2 2	0	0
5	E	1	Total C O 4 2 2	0	0


- Molecule 6 is water.

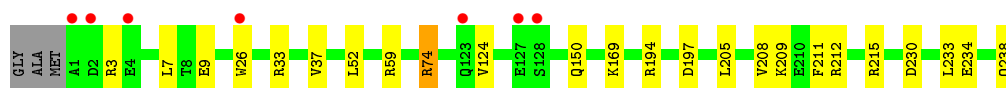
Mol	Chain	Residues	Atoms	ZeroOcc	AltConf
6	A	194	Total O 194 194	0	0
6	B	207	Total O 207 207	0	0
6	C	202	Total O 202 202	0	0
6	D	148	Total O 148 148	0	0
6	E	162	Total O 162 162	0	0

### 3 Residue-property plots [i](#)


These plots are drawn for all protein, RNA and DNA chains in the entry. The first graphic for a chain summarises the proportions of the various outlier classes displayed in the second graphic. The second graphic shows the sequence view annotated by issues in geometry and electron density. Residues are color-coded according to the number of geometric quality criteria for which they contain at least one outlier: green = 0, yellow = 1, orange = 2 and red = 3 or more. A red dot above a residue indicates a poor fit to the electron density ( $RSRZ > 2$ ). Stretches of 2 or more consecutive residues without any outlier are shown as a green connector. Residues present in the sample, but not in the model, are shown in grey.

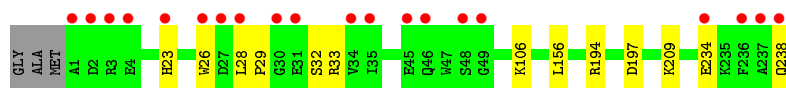
- Molecule 1: Chlorite dismutase

Chain A: 



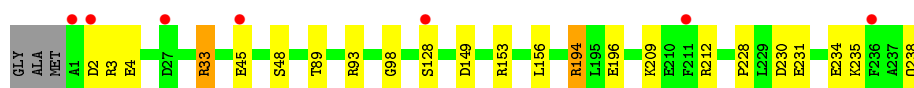
- Molecule 1: Chlorite dismutase

Chain B: 




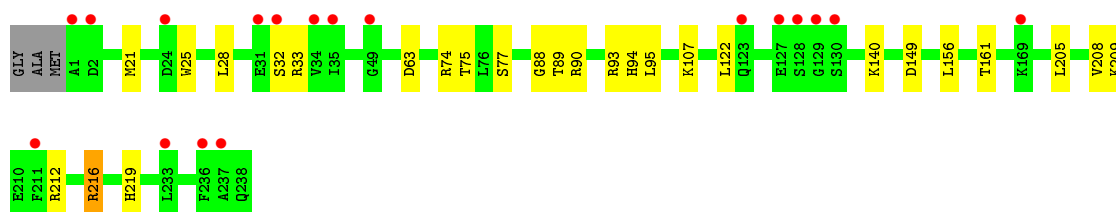
- Molecule 1: Chlorite dismutase

Chain C: 



- Molecule 1: Chlorite dismutase

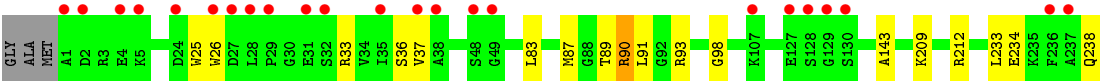
Chain D: 



- Molecule 1: Chlorite dismutase

Chain E: 





## 4 Data and refinement statistics

Property	Value	Source
Space group	P 32 2 1	Depositor
Cell constants a, b, c, $\alpha$ , $\beta$ , $\gamma$	145.67Å 145.67Å 136.44Å 90.00° 90.00° 120.00°	Depositor
Resolution (Å)	47.68 – 1.85 47.68 – 1.85	Depositor EDS
% Data completeness (in resolution range)	99.7 (47.68-1.85) 99.7 (47.68-1.85)	Depositor EDS
$R_{merge}$	(Not available)	Depositor
$R_{sym}$	(Not available)	Depositor
$\langle I/\sigma(I) \rangle$ <sup>1</sup>	5.87 (at 1.86Å)	Xtriage
Refinement program	REFMAC 5.5.0102	Depositor
R, $R_{free}$	0.180 , 0.210 0.185 , 0.212	Depositor DCC
$R_{free}$ test set	7117 reflections (5.02%)	wwPDB-VP
Wilson B-factor (Å <sup>2</sup> )	29.5	Xtriage
Anisotropy	0.165	Xtriage
Bulk solvent $k_{sol}$ (e/Å <sup>3</sup> ), $B_{sol}$ (Å <sup>2</sup> )	0.38 , 60.6	EDS
L-test for twinning <sup>2</sup>	$\langle  L  \rangle = 0.50$ , $\langle L^2 \rangle = 0.33$	Xtriage
Estimated twinning fraction	0.014 for -h,-k,l	Xtriage
$F_o, F_c$ correlation	0.96	EDS
Total number of atoms	10987	wwPDB-VP
Average B, all atoms (Å <sup>2</sup> )	41.0	wwPDB-VP

Xtriage's analysis on translational NCS is as follows: *The largest off-origin peak in the Patterson function is 2.80% of the height of the origin peak. No significant pseudotranslation is detected.*

<sup>1</sup>Intensities estimated from amplitudes.

<sup>2</sup>Theoretical values of  $\langle |L| \rangle$ ,  $\langle L^2 \rangle$  for acentric reflections are 0.5, 0.333 respectively for untwinned datasets, and 0.375, 0.2 for perfectly twinned datasets.

## 5 Model quality

### 5.1 Standard geometry

Bond lengths and bond angles in the following residue types are not validated in this section: HEM, PO4, IMD, EDO

The Z score for a bond length (or angle) is the number of standard deviations the observed value is removed from the expected value. A bond length (or angle) with  $|Z| > 5$  is considered an outlier worth inspection. RMSZ is the root-mean-square of all Z scores of the bond lengths (or angles).

Mol	Chain	Bond lengths		Bond angles	
		RMSZ	$\# Z  > 5$	RMSZ	$\# Z  > 5$
1	A	0.60	0/2005	0.73	1/2709 (0.0%)
1	B	0.60	0/1983	0.70	0/2681
1	C	0.62	0/2005	0.75	4/2709 (0.1%)
1	D	0.56	0/1988	0.68	2/2687 (0.1%)
1	E	0.55	0/1976	0.68	0/2671
All	All	0.59	0/9957	0.71	7/13457 (0.1%)

There are no bond length outliers.

All (7) bond angle outliers are listed below:

Mol	Chain	Res	Type	Atoms	Z	Observed( $^{\circ}$ )	Ideal( $^{\circ}$ )
1	C	149	ASP	CB-CG-OD1	7.84	125.36	118.30
1	C	149	ASP	CB-CG-OD2	-6.74	112.23	118.30
1	A	59	ARG	NE-CZ-NH2	-6.58	117.01	120.30
1	C	153	ARG	NE-CZ-NH1	6.10	123.35	120.30
1	D	149	ASP	CB-CG-OD2	-6.01	112.89	118.30
1	C	33	ARG	NE-CZ-NH2	-5.95	117.32	120.30
1	D	149	ASP	CB-CG-OD1	5.89	123.61	118.30

There are no chirality outliers.

There are no planarity outliers.

### 5.2 Too-close contacts

In the following table, the Non-H and H(model) columns list the number of non-hydrogen atoms and hydrogen atoms in the chain respectively. The H(added) column lists the number of hydrogen atoms added and optimized by MolProbity. The Clashes column lists the number of clashes within the asymmetric unit, whereas Symm-Clashes lists symmetry related clashes.

Mol	Chain	Non-H	H(model)	H(added)	Clashes	Symm-Clashes
1	A	1958	0	1930	21	0
1	B	1936	0	1905	12	0
1	C	1958	0	1930	18	0
1	D	1941	0	1914	18	0
1	E	1930	0	1905	24	0
2	A	43	0	30	1	0
2	B	43	0	30	0	0
2	C	43	0	30	2	0
2	D	43	0	30	3	0
2	E	43	0	30	1	0
3	A	15	0	0	1	0
3	B	15	0	0	0	0
3	C	10	0	0	0	0
3	D	15	0	0	0	0
3	E	20	0	0	0	0
4	A	5	0	4	0	0
4	B	5	0	4	0	0
4	C	5	0	4	0	0
4	D	5	0	4	2	0
4	E	5	0	4	0	0
5	A	8	0	12	0	0
5	B	8	0	12	3	0
5	C	8	0	12	0	0
5	D	4	0	6	0	0
5	E	8	0	12	1	0
6	A	194	0	0	0	0
6	B	207	0	0	2	0
6	C	202	0	0	4	0
6	D	148	0	0	5	0
6	E	162	0	0	1	0
All	All	10987	0	9808	94	0

The all-atom clashscore is defined as the number of clashes found per 1000 atoms (including hydrogen atoms). The all-atom clashscore for this structure is 5.

All (94) close contacts within the same asymmetric unit are listed below, sorted by their clash magnitude.

Atom-1	Atom-2	Interatomic distance (Å)	Clash overlap (Å)
1:A:7:LEU:HD21	1:A:52:LEU:CD2	1.75	1.16
1:E:212[B]:ARG:HD2	1:E:212[B]:ARG:H	1.36	0.89
1:A:3:ARG:O	1:A:7:LEU:HD23	1.74	0.87
1:D:209:LYS:O	1:D:212[B]:ARG:HG2	1.78	0.83

*Continued on next page...*

*Continued from previous page...*

Atom-1	Atom-2	Interatomic distance (Å)	Clash overlap (Å)
1:A:7:LEU:HD21	1:A:52:LEU:HD22	1.59	0.81
1:E:234:GLU:OE2	1:E:238:GLN:NE2	2.15	0.78
1:E:98:GLY:O	6:E:976:HOH:O	2.01	0.77
1:A:7:LEU:HD21	1:A:52:LEU:HD23	1.67	0.77
1:E:37:VAL:CG2	1:E:233:LEU:HB3	2.19	0.73
1:A:26:TRP:HB3	1:E:93:ARG:HD2	1.71	0.73
1:C:212[B]:ARG:HD3	6:C:448:HOH:O	1.89	0.72
1:A:230:ASP:O	1:A:234:GLU:HG3	1.90	0.71
1:E:37:VAL:HG22	1:E:233:LEU:HD13	1.75	0.68
1:B:234:GLU:O	1:B:238:GLN:HG2	1.96	0.65
1:A:7:LEU:CD2	1:A:52:LEU:CD2	2.65	0.65
1:C:209:LYS:O	1:C:212[B]:ARG:HG3	1.97	0.65
1:E:37:VAL:HG21	1:E:233:LEU:HB3	1.78	0.65
5:B:245:EDO:H21	6:B:260:HOH:O	1.97	0.63
1:A:26:TRP:CB	1:E:93:ARG:HD2	2.29	0.62
1:A:7:LEU:CD2	1:A:52:LEU:HD22	2.26	0.62
1:E:36:SER:OG	1:E:90:ARG:HG2	1.99	0.61
1:A:212[B]:ARG:HG3	1:E:143:ALA:HB1	1.83	0.60
1:C:231:GLU:O	1:C:234:GLU:HG2	2.02	0.60
1:C:98:GLY:HA3	6:C:297:HOH:O	2.01	0.60
1:D:216:ARG:NH1	1:D:219:HIS:O	2.36	0.59
1:B:28:LEU:HD23	1:B:29:PRO:CD	2.35	0.56
1:D:90:ARG:N	6:D:258:HOH:O	2.38	0.56
1:C:89:THR:O	1:C:93:ARG:HG3	2.05	0.56
1:E:212[B]:ARG:N	1:E:212[B]:ARG:HD2	2.13	0.56
2:C:239:HEM:HBB2	2:C:239:HEM:HMB1	1.86	0.56
1:D:156:LEU:HD22	1:D:209:LYS:HB3	1.88	0.56
1:E:209:LYS:HA	1:E:212[B]:ARG:HD3	1.86	0.56
1:E:89:THR:O	1:E:93:ARG:HG3	2.06	0.55
1:C:194[A]:ARG:HD2	1:C:196:GLU:H	1.72	0.54
5:B:245:EDO:C2	6:B:260:HOH:O	2.54	0.53
1:B:28:LEU:HD23	1:B:29:PRO:HD2	1.91	0.53
1:D:90:ARG:HA	1:D:93:ARG:HD2	1.91	0.53
1:B:26:TRP:HB2	1:C:93:ARG:HD2	1.90	0.53
1:B:28:LEU:HD22	1:B:33:ARG:HG3	1.90	0.53
1:D:89:THR:O	1:D:93:ARG:HG3	2.09	0.52
1:A:7:LEU:HD21	1:A:52:LEU:HD21	1.83	0.52
1:C:98:GLY:O	6:C:1000:HOH:O	2.19	0.51
1:A:9:GLU:OE1	1:A:74:ARG:NH1	2.41	0.50
1:B:106:LYS:O	5:B:245:EDO:H22	2.11	0.50
1:E:37:VAL:HG22	1:E:233:LEU:HB3	1.93	0.50

*Continued on next page...*

*Continued from previous page...*

Atom-1	Atom-2	Interatomic distance (Å)	Clash overlap (Å)
1:D:93:ARG:HD3	1:E:26:TRP:HB3	1.94	0.50
1:E:25:TRP:O	1:E:33:ARG:HD3	2.11	0.50
1:A:124:VAL:HG11	1:A:169:LYS:HG2	1.94	0.50
1:C:33:ARG:HH22	1:C:238:GLN:C	2.15	0.50
1:D:88:GLY:O	1:D:93:ARG:NE	2.43	0.50
1:B:26:TRP:HB2	1:C:93:ARG:CD	2.41	0.49
1:A:215:ARG:NE	3:A:242:PO4:O1	2.46	0.48
1:E:212[B]:ARG:H	1:E:212[B]:ARG:CD	2.15	0.48
1:D:21:MET:HA	1:D:95:LEU:HD23	1.95	0.48
1:D:205:LEU:O	1:D:208:VAL:HG22	2.13	0.48
1:E:37:VAL:HG23	1:E:233:LEU:HD22	1.96	0.48
1:D:28:LEU:HD11	1:D:94:HIS:NE2	2.29	0.48
1:A:26:TRP:HB3	1:E:93:ARG:CD	2.41	0.47
1:B:23:HIS:CE1	1:C:93:ARG:O	2.67	0.47
1:C:156:LEU:HD22	1:C:209:LYS:HB2	1.96	0.47
1:A:209:LYS:HA	1:A:212[B]:ARG:HD3	1.97	0.47
1:D:75:THR:HG22	1:D:77:SER:HB2	1.95	0.47
1:E:83:LEU:O	1:E:87:MET:HE2	2.15	0.47
1:C:3:ARG:NH1	1:C:4:GLU:OE2	2.48	0.47
1:B:28:LEU:HD21	1:B:32:SER:HB2	1.97	0.46
1:E:212[B]:ARG:N	1:E:212[B]:ARG:CD	2.77	0.46
1:E:90:ARG:HG3	1:E:90:ARG:O	2.16	0.46
1:E:25:TRP:CH2	1:E:91:LEU:HD23	2.51	0.45
2:D:239:HEM:NC	4:D:243:IMD:H4	2.32	0.45
1:A:205:LEU:HB3	1:A:211[B]:PHE:CE1	2.52	0.45
2:D:239:HEM:C4C	4:D:243:IMD:H4	2.51	0.45
1:D:77:SER:HB3	6:D:908:HOH:O	2.17	0.45
1:B:156:LEU:HD22	1:B:209:LYS:HB2	1.99	0.44
1:C:234:GLU:CG	1:C:235:LYS:N	2.79	0.44
1:C:228:PRO:HB2	1:C:230:ASP:OD1	2.18	0.44
1:D:107:LYS:NZ	6:D:445:HOH:O	2.50	0.44
1:C:212[B]:ARG:CD	6:C:448:HOH:O	2.57	0.44
1:A:205:LEU:O	1:A:208:VAL:HG22	2.18	0.43
1:D:25:TRP:O	1:D:33:ARG:HD3	2.18	0.43
1:D:212[B]:ARG:CD	6:D:777:HOH:O	2.66	0.43
2:C:239:HEM:CMB	2:C:239:HEM:HBB2	2.49	0.42
1:B:28:LEU:CD2	1:B:32:SER:HB2	2.50	0.42
1:C:156:LEU:CD2	1:C:209:LYS:HB2	2.49	0.42
2:E:239:HEM:CMA	5:E:245:EDO:H11	2.50	0.41
1:A:33:ARG:HH12	1:A:238:GLN:C	2.24	0.41
1:E:36:SER:CB	1:E:90:ARG:HG2	2.50	0.41

*Continued on next page...*

*Continued from previous page...*

Atom-1	Atom-2	Interatomic distance (Å)	Clash overlap (Å)
2:A:239:HEM:HMB1	2:A:239:HEM:HBB2	2.02	0.41
2:D:239:HEM:HMB1	2:D:239:HEM:HBB2	2.01	0.41
1:A:194:ARG:NH1	1:A:197:ASP:OD2	2.54	0.41
1:A:37:VAL:HG22	1:A:233:LEU:HB3	2.02	0.41
1:B:194:ARG:NH2	1:B:197:ASP:OD2	2.54	0.41
1:C:45:GLU:O	1:C:48:SER:OG	2.24	0.41
1:D:140:LYS:NZ	6:D:886:HOH:O	2.50	0.41
1:D:122:LEU:HD21	1:D:161:THR:HG23	2.02	0.40

There are no symmetry-related clashes.

## 5.3 Torsion angles [i](#)

### 5.3.1 Protein backbone [i](#)

In the following table, the Percentiles column shows the percent Ramachandran outliers of the chain as a percentile score with respect to all X-ray entries followed by that with respect to entries of similar resolution.

The Analysed column shows the number of residues for which the backbone conformation was analysed, and the total number of residues.

Mol	Chain	Analysed	Favoured	Allowed	Outliers	Percentiles	
1	A	240/241 (100%)	237 (99%)	3 (1%)	0	100	100
1	B	238/241 (99%)	234 (98%)	4 (2%)	0	100	100
1	C	240/241 (100%)	237 (99%)	3 (1%)	0	100	100
1	D	238/241 (99%)	234 (98%)	4 (2%)	0	100	100
1	E	237/241 (98%)	234 (99%)	3 (1%)	0	100	100
All	All	1193/1205 (99%)	1176 (99%)	17 (1%)	0	100	100

There are no Ramachandran outliers to report.

### 5.3.2 Protein sidechains [i](#)

In the following table, the Percentiles column shows the percent sidechain outliers of the chain as a percentile score with respect to all X-ray entries followed by that with respect to entries of similar resolution.

The Analysed column shows the number of residues for which the sidechain conformation was

analysed, and the total number of residues.

Mol	Chain	Analysed	Rotameric	Outliers	Percentiles	
1	A	209/206 (102%)	207 (99%)	2 (1%)	76	69
1	B	207/206 (100%)	207 (100%)	0	100	100
1	C	209/206 (102%)	205 (98%)	4 (2%)	57	43
1	D	207/206 (100%)	203 (98%)	4 (2%)	57	43
1	E	206/206 (100%)	205 (100%)	1 (0%)	88	86
All	All	1038/1030 (101%)	1027 (99%)	11 (1%)	76	65

All (11) residues with a non-rotameric sidechain are listed below:

Mol	Chain	Res	Type
1	A	74	ARG
1	A	150	GLN
1	C	2	ASP
1	C	128	SER
1	C	194[A]	ARG
1	C	194[B]	ARG
1	D	32	SER
1	D	63	ASP
1	D	74	ARG
1	D	216	ARG
1	E	90	ARG

Some sidechains can be flipped to improve hydrogen bonding and reduce clashes. There are no such sidechains identified.

### 5.3.3 RNA ⓘ

There are no RNA molecules in this entry.

## 5.4 Non-standard residues in protein, DNA, RNA chains ⓘ

There are no non-standard protein/DNA/RNA residues in this entry.

## 5.5 Carbohydrates ⓘ

There are no carbohydrates in this entry.

## 5.6 Ligand geometry

34 ligands are modelled in this entry.

In the following table, the Counts columns list the number of bonds (or angles) for which Mogul statistics could be retrieved, the number of bonds (or angles) that are observed in the model and the number of bonds (or angles) that are defined in the Chemical Component Dictionary. The Link column lists molecule types, if any, to which the group is linked. The Z score for a bond length (or angle) is the number of standard deviations the observed value is removed from the expected value. A bond length (or angle) with  $|Z| > 2$  is considered an outlier worth inspection. RMSZ is the root-mean-square of all Z scores of the bond lengths (or angles).

Mol	Type	Chain	Res	Link	Bond lengths			Bond angles		
					Counts	RMSZ	# Z  > 2	Counts	RMSZ	# Z  > 2
5	EDO	C	244	-	3,3,3	0.46	0	2,2,2	0.29	0
3	PO4	B	240	-	4,4,4	1.84	1 (25%)	6,6,6	0.96	0
2	HEM	A	239	1,4	27,50,50	2.10	7 (25%)	17,82,82	1.94	5 (29%)
2	HEM	E	239	1,4	27,50,50	2.08	10 (37%)	17,82,82	1.79	3 (17%)
2	HEM	B	239	1,4	27,50,50	1.91	8 (29%)	17,82,82	1.80	5 (29%)
3	PO4	C	241	-	4,4,4	0.92	0	6,6,6	0.47	0
2	HEM	D	239	1,4	27,50,50	2.16	7 (25%)	17,82,82	2.06	7 (41%)
3	PO4	E	240	-	4,4,4	1.01	0	6,6,6	1.47	2 (33%)
5	EDO	D	244	-	3,3,3	0.24	0	2,2,2	0.56	0
3	PO4	A	242	-	4,4,4	0.97	0	6,6,6	0.72	0
3	PO4	E	242	-	4,4,4	1.03	0	6,6,6	1.03	0
5	EDO	E	245	-	3,3,3	0.51	0	2,2,2	0.15	0
5	EDO	C	243	-	3,3,3	0.77	0	2,2,2	1.16	0
3	PO4	E	243	-	4,4,4	0.98	0	6,6,6	0.59	0
3	PO4	A	240	-	4,4,4	1.07	0	6,6,6	1.78	2 (33%)
4	IMD	C	242	2	3,5,5	0.08	0	4,5,5	0.61	0
5	EDO	B	244	-	3,3,3	0.46	0	2,2,2	0.59	0
4	IMD	E	244	2	3,5,5	0.28	0	4,5,5	0.96	0
4	IMD	D	243	2	3,5,5	0.48	0	4,5,5	1.00	0
4	IMD	B	243	2	3,5,5	0.35	0	4,5,5	0.59	0
5	EDO	A	245	-	3,3,3	0.35	0	2,2,2	0.72	0
3	PO4	D	240	-	4,4,4	1.02	0	6,6,6	1.23	1 (16%)
2	HEM	C	239	1,4	27,50,50	2.09	9 (33%)	17,82,82	2.38	8 (47%)
3	PO4	D	241	-	4,4,4	1.42	1 (25%)	6,6,6	1.15	0
5	EDO	A	244	-	3,3,3	0.47	0	2,2,2	0.22	0
3	PO4	A	241	-	4,4,4	1.35	0	6,6,6	1.39	1 (16%)
3	PO4	B	241	-	4,4,4	1.12	0	6,6,6	1.25	0
3	PO4	D	242	-	4,4,4	0.92	0	6,6,6	0.60	0
3	PO4	E	241	-	4,4,4	1.04	0	6,6,6	0.77	0
3	PO4	B	242	-	4,4,4	1.11	0	6,6,6	0.61	0

Mol	Type	Chain	Res	Link	Bond lengths			Bond angles		
					Counts	RMSZ	# Z  > 2	Counts	RMSZ	# Z  > 2
3	PO4	C	240	-	4,4,4	1.23	0	6,6,6	1.37	1 (16%)
5	EDO	B	245	-	3,3,3	0.27	0	2,2,2	0.92	0
5	EDO	E	246	-	3,3,3	0.33	0	2,2,2	0.83	0
4	IMD	A	243	2	3,5,5	0.38	0	4,5,5	1.02	0

In the following table, the Chirals column lists the number of chiral outliers, the number of chiral centers analysed, the number of these observed in the model and the number defined in the Chemical Component Dictionary. Similar counts are reported in the Torsion and Rings columns. '-' means no outliers of that kind were identified.

Mol	Type	Chain	Res	Link	Chirals	Torsions	Rings
5	EDO	C	244	-	-	1/1/1/1	-
4	IMD	D	243	2	-	-	0/1/1/1
4	IMD	B	243	2	-	-	0/1/1/1
5	EDO	D	244	-	-	1/1/1/1	-
5	EDO	A	245	-	-	1/1/1/1	-
4	IMD	E	244	2	-	-	0/1/1/1
5	EDO	E	245	-	-	0/1/1/1	-
2	HEM	A	239	1,4	-	0/6/54/54	-
2	HEM	C	239	1,4	-	0/6/54/54	-
2	HEM	E	239	1,4	-	0/6/54/54	-
2	HEM	B	239	1,4	-	0/6/54/54	-
5	EDO	E	246	-	-	1/1/1/1	-
2	HEM	D	239	1,4	-	0/6/54/54	-
5	EDO	B	245	-	-	1/1/1/1	-
4	IMD	C	242	2	-	-	0/1/1/1
5	EDO	B	244	-	-	1/1/1/1	-
5	EDO	C	243	-	-	1/1/1/1	-
5	EDO	A	244	-	-	0/1/1/1	-
4	IMD	A	243	2	-	-	0/1/1/1

All (43) bond length outliers are listed below:

Mol	Chain	Res	Type	Atoms	Z	Observed(Å)	Ideal(Å)
2	D	239	HEM	C3B-C2B	-5.34	1.33	1.40
2	D	239	HEM	C3C-C2C	-4.82	1.33	1.40
2	A	239	HEM	C3C-C2C	-4.33	1.34	1.40
2	A	239	HEM	C3B-CAB	4.31	1.56	1.47
2	E	239	HEM	C3D-C2D	4.28	1.50	1.37
2	B	239	HEM	C3D-C2D	4.26	1.50	1.37
2	C	239	HEM	C3B-C2B	-4.20	1.34	1.40
2	A	239	HEM	C3D-C2D	4.13	1.49	1.37

*Continued on next page...*

*Continued from previous page...*

Mol	Chain	Res	Type	Atoms	Z	Observed(Å)	Ideal(Å)
2	E	239	HEM	C3C-C2C	-4.09	1.34	1.40
2	C	239	HEM	C3D-C2D	4.04	1.49	1.37
2	E	239	HEM	C3B-C2B	-3.95	1.34	1.40
2	B	239	HEM	C3C-C2C	-3.70	1.35	1.40
2	D	239	HEM	C3D-C2D	3.62	1.48	1.37
2	C	239	HEM	C3C-C2C	-3.60	1.35	1.40
2	D	239	HEM	C3B-CAB	3.53	1.55	1.47
2	E	239	HEM	C3C-CAC	3.52	1.55	1.47
2	A	239	HEM	C3B-C2B	-3.50	1.35	1.40
2	B	239	HEM	C3C-CAC	3.46	1.54	1.47
2	C	239	HEM	CMA-C3A	3.45	1.58	1.51
2	E	239	HEM	C3B-CAB	3.32	1.54	1.47
2	D	239	HEM	C3C-CAC	3.32	1.54	1.47
2	C	239	HEM	C3B-CAB	3.07	1.54	1.47
2	C	239	HEM	C4B-NB	2.97	1.42	1.36
2	C	239	HEM	C1D-ND	2.96	1.42	1.36
2	A	239	HEM	CAA-C2A	2.91	1.56	1.52
2	D	239	HEM	C1D-ND	2.88	1.42	1.36
2	B	239	HEM	CMD-C2D	2.80	1.57	1.51
2	C	239	HEM	C3C-CAC	2.73	1.53	1.47
2	D	239	HEM	C4B-NB	2.68	1.41	1.36
2	E	239	HEM	C4A-NA	2.64	1.41	1.36
2	A	239	HEM	C3C-CAC	2.60	1.53	1.47
2	B	239	HEM	CMA-C3A	2.60	1.57	1.51
2	B	239	HEM	CMB-C2B	2.59	1.57	1.51
3	B	240	PO4	P-O1	2.47	1.56	1.50
2	E	239	HEM	CMB-C2B	2.38	1.57	1.51
2	E	239	HEM	CMD-C2D	2.35	1.56	1.51
2	B	239	HEM	C3B-C2B	-2.21	1.37	1.40
2	A	239	HEM	C1A-NA	2.20	1.40	1.36
2	E	239	HEM	C1A-NA	2.15	1.40	1.36
2	C	239	HEM	CMB-C2B	2.09	1.56	1.51
2	B	239	HEM	C4A-NA	2.09	1.40	1.36
3	D	241	PO4	P-O1	2.05	1.55	1.50
2	E	239	HEM	C1D-CHD	-2.00	1.35	1.41

All (35) bond angle outliers are listed below:

Mol	Chain	Res	Type	Atoms	Z	Observed(°)	Ideal(°)
2	C	239	HEM	CBD-CAD-C3D	-4.87	103.51	112.48
2	E	239	HEM	C1D-C2D-C3D	-4.25	104.04	107.00
2	C	239	HEM	C1D-C2D-C3D	-4.17	104.09	107.00

*Continued on next page...*

*Continued from previous page...*

Mol	Chain	Res	Type	Atoms	Z	Observed(°)	Ideal(°)
2	C	239	HEM	CMC-C2C-C3C	4.04	132.24	124.68
2	A	239	HEM	C1D-C2D-C3D	-4.02	104.20	107.00
2	D	239	HEM	CBD-CAD-C3D	-3.35	106.31	112.48
2	B	239	HEM	C1D-C2D-C3D	-3.24	104.74	107.00
2	D	239	HEM	CMA-C3A-C4A	-3.23	123.50	128.46
3	A	240	PO4	O3-P-O2	3.19	118.22	107.97
2	D	239	HEM	CAA-CBA-CGA	-3.19	107.33	112.67
2	C	239	HEM	C4C-C3C-C2C	3.13	109.08	106.90
2	B	239	HEM	C4C-C3C-C2C	3.13	109.08	106.90
2	E	239	HEM	CAD-CBD-CGD	-3.05	107.56	112.67
2	B	239	HEM	CMC-C2C-C3C	2.91	130.12	124.68
2	A	239	HEM	CMB-C2B-C3B	2.91	130.12	124.68
3	C	240	PO4	O3-P-O2	2.83	117.05	107.97
2	A	239	HEM	CMD-C2D-C3D	2.82	130.25	124.94
2	A	239	HEM	CMA-C3A-C4A	-2.81	124.15	128.46
2	E	239	HEM	CBD-CAD-C3D	-2.81	107.31	112.48
2	D	239	HEM	CMC-C2C-C3C	2.71	129.74	124.68
2	C	239	HEM	C3C-C4C-NC	-2.60	106.04	110.94
2	B	239	HEM	CAD-CBD-CGD	-2.50	108.48	112.67
2	C	239	HEM	CMA-C3A-C4A	-2.41	124.75	128.46
2	D	239	HEM	CAD-CBD-CGD	-2.35	108.73	112.67
3	A	240	PO4	O2-P-O1	-2.33	102.37	110.89
2	D	239	HEM	C1D-C2D-C3D	-2.31	105.39	107.00
2	C	239	HEM	C3B-C4B-NB	2.26	112.13	109.21
2	C	239	HEM	CAD-CBD-CGD	-2.24	108.91	112.67
2	D	239	HEM	CMD-C2D-C1D	2.18	131.81	128.46
3	E	240	PO4	O4-P-O1	-2.17	102.94	110.89
3	D	240	PO4	O4-P-O2	2.17	114.92	107.97
3	A	241	PO4	O4-P-O2	2.15	114.87	107.97
2	B	239	HEM	C4A-C3A-C2A	2.02	108.40	107.00
3	E	240	PO4	O4-P-O2	2.01	114.43	107.97
2	A	239	HEM	CAD-CBD-CGD	-2.00	109.31	112.67

There are no chirality outliers.

All (7) torsion outliers are listed below:

Mol	Chain	Res	Type	Atoms
5	C	243	EDO	O1-C1-C2-O2
5	E	246	EDO	O1-C1-C2-O2
5	B	244	EDO	O1-C1-C2-O2
5	C	244	EDO	O1-C1-C2-O2
5	D	244	EDO	O1-C1-C2-O2

*Continued on next page...*

*Continued from previous page...*

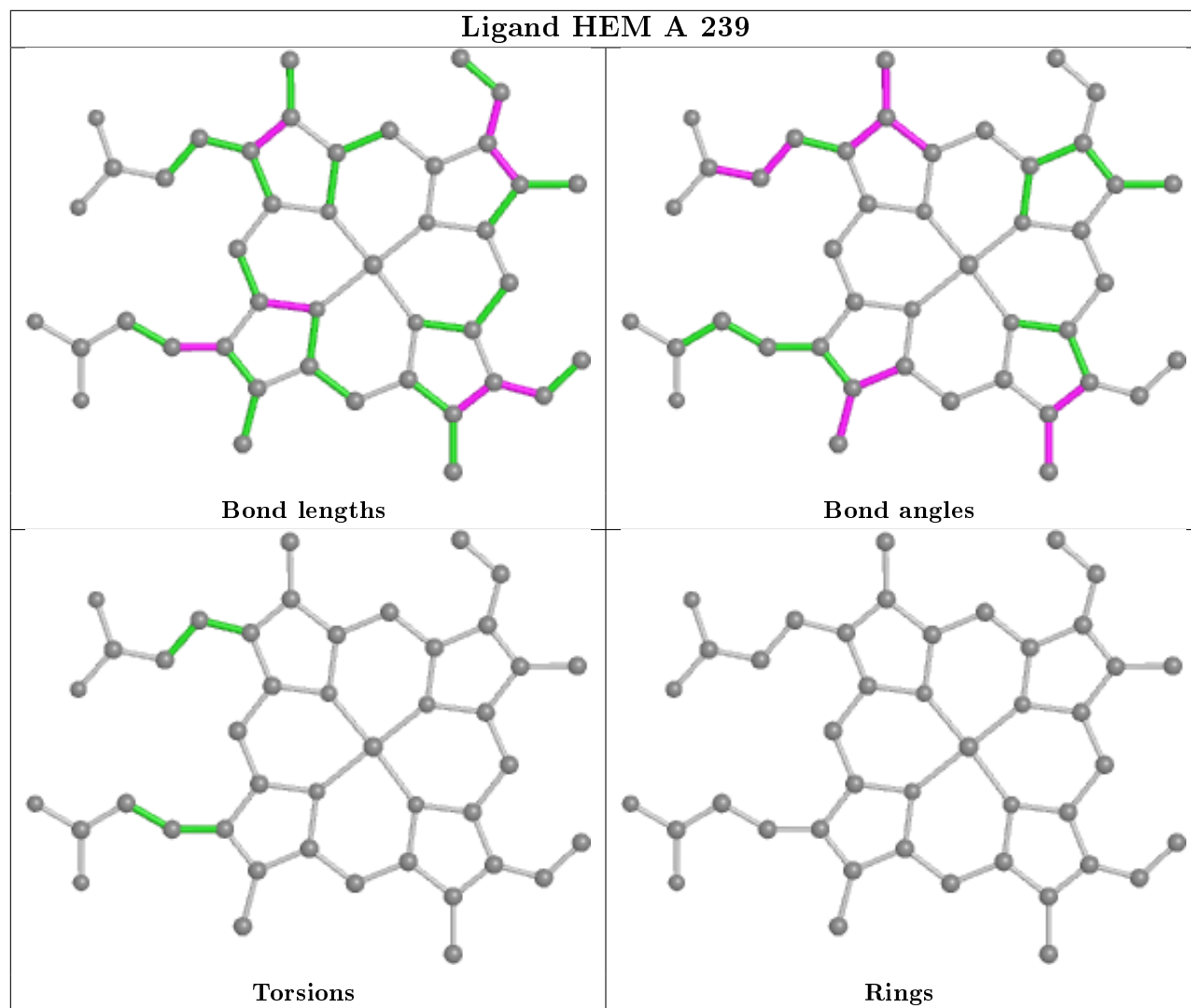
Mol	Chain	Res	Type	Atoms
5	A	245	EDO	O1-C1-C2-O2
5	B	245	EDO	O1-C1-C2-O2

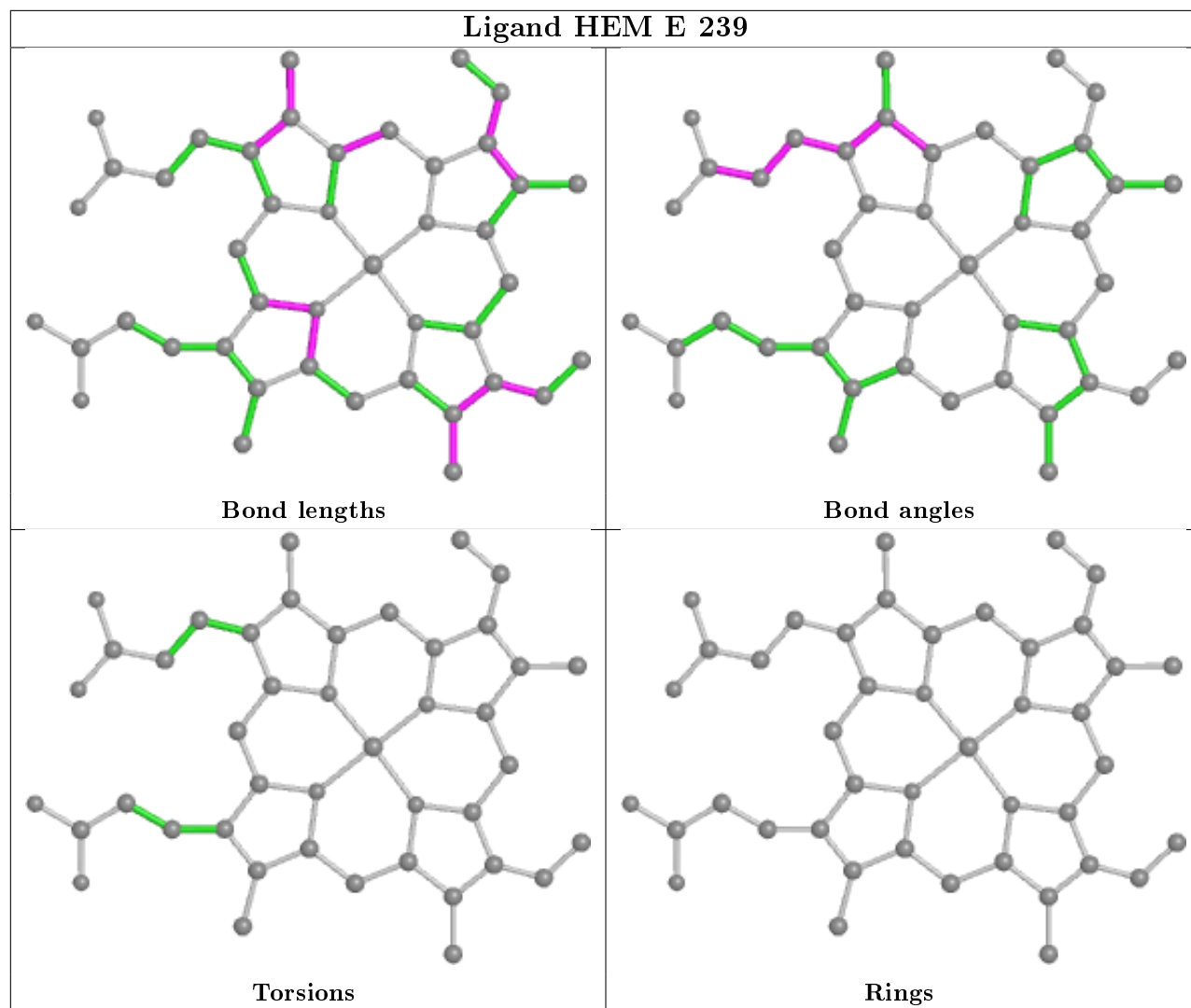
There are no ring outliers.

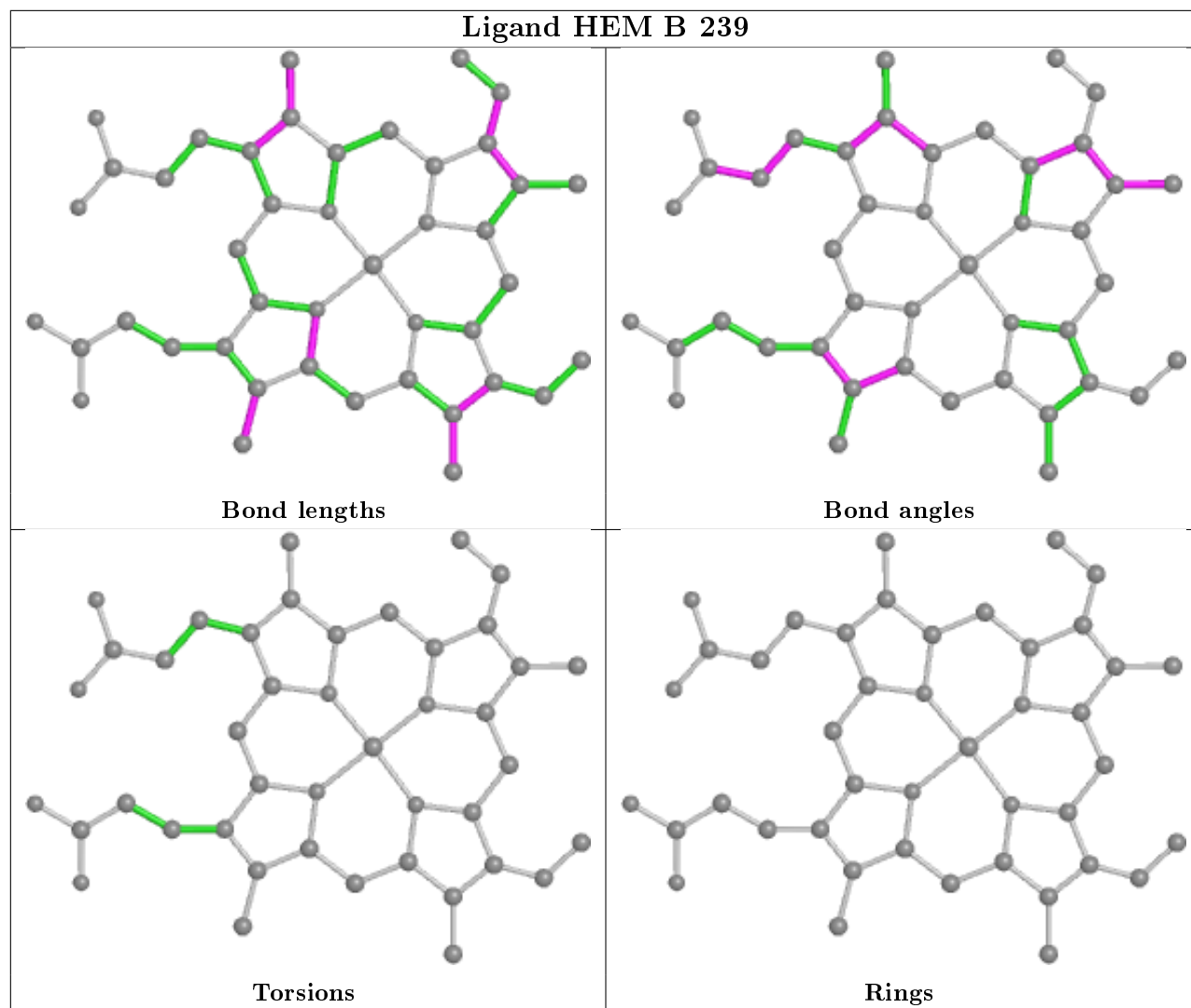
8 monomers are involved in 11 short contacts:

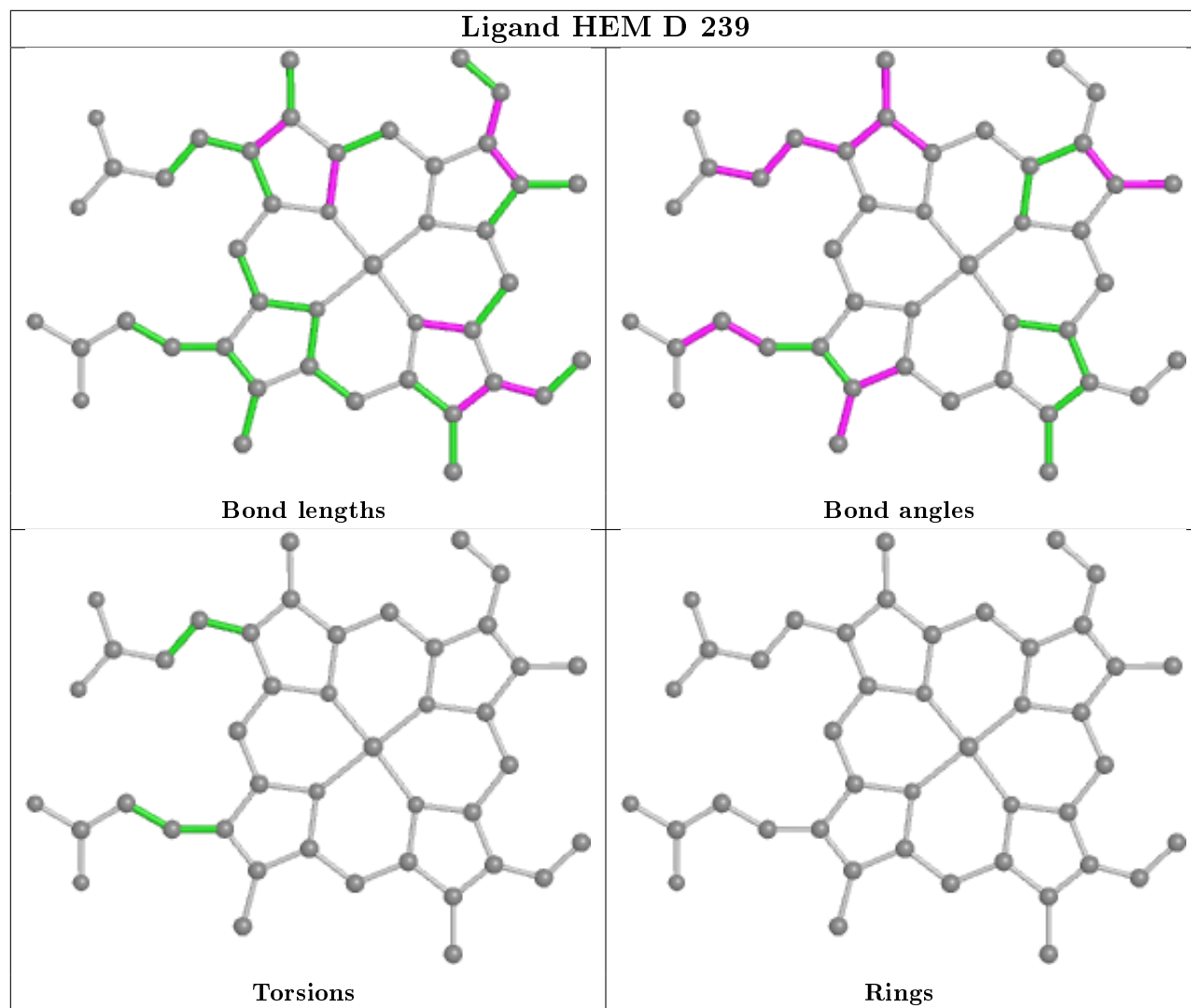
Mol	Chain	Res	Type	Clashes	Symm-Clashes
2	A	239	HEM	1	0
2	E	239	HEM	1	0
2	D	239	HEM	3	0
3	A	242	PO4	1	0
5	E	245	EDO	1	0
4	D	243	IMD	2	0
2	C	239	HEM	2	0
5	B	245	EDO	3	0

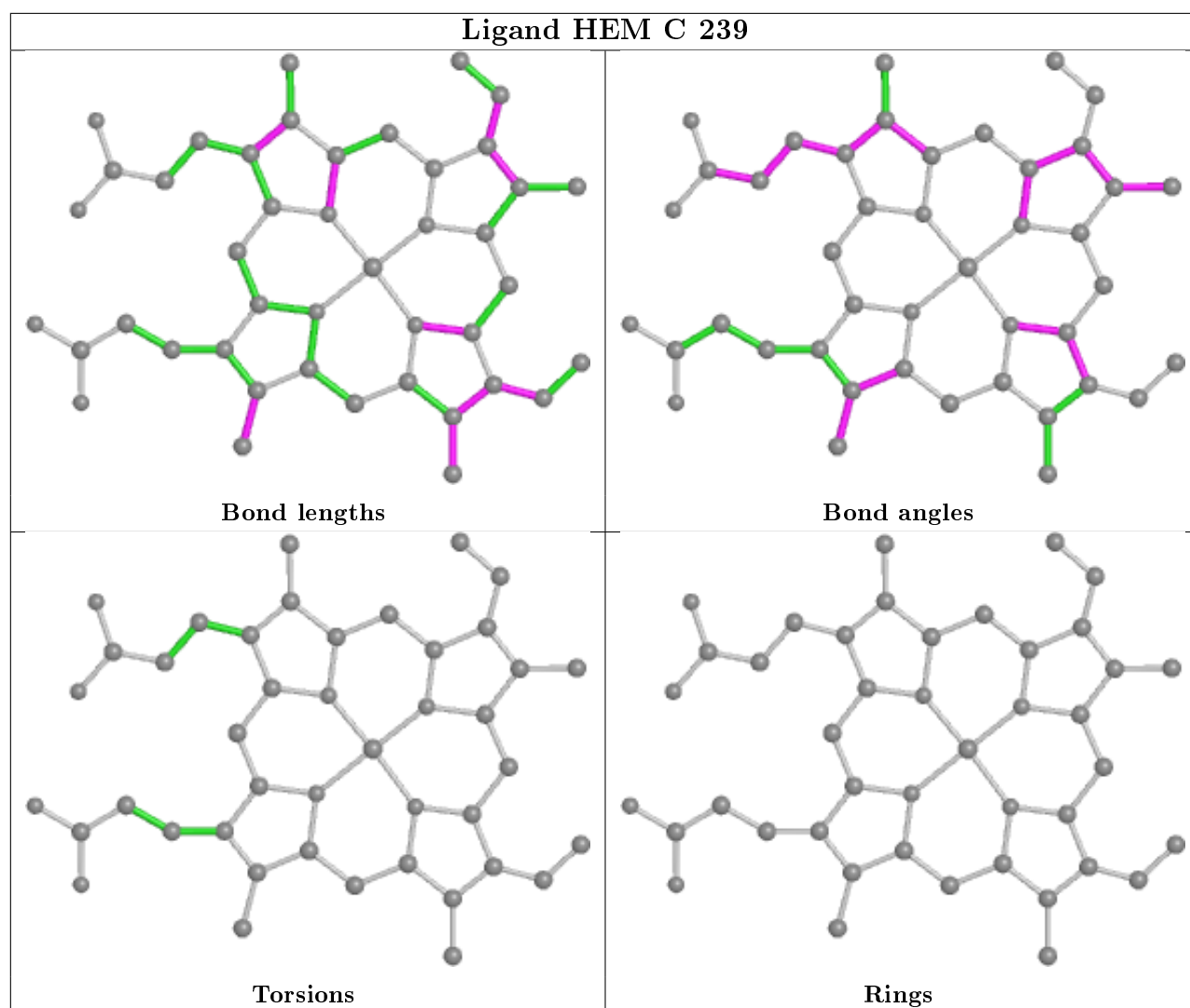
The following is a two-dimensional graphical depiction of Mogul quality analysis of bond lengths, bond angles, torsion angles, and ring geometry for all instances of the Ligand of Interest. In addition, ligands with molecular weight > 250 and outliers as shown on the validation Tables will also be included. For torsion angles, if less than 5% of the Mogul distribution of torsion angles is within 10 degrees of the torsion angle in question, then that torsion angle is considered an outlier. Any bond that is central to one or more torsion angles identified as an outlier by Mogul will be highlighted in the graph. For rings, the root-mean-square deviation (RMSD) between the ring in question and similar rings identified by Mogul is calculated over all ring torsion angles. If the average RMSD is greater than 60 degrees and the minimal RMSD between the ring in question and any Mogul-identified rings is also greater than 60 degrees, then that ring is considered an outlier. The outliers are highlighted in purple. The color gray indicates Mogul did not find sufficient equivalents in the CSD to analyse the geometry.











## 5.7 Other polymers [i](#)

There are no such residues in this entry.

## 5.8 Polymer linkage issues [i](#)

There are no chain breaks in this entry.

## 6 Fit of model and data ⓘ

### 6.1 Protein, DNA and RNA chains ⓘ

In the following table, the column labelled ‘#RSRZ> 2’ contains the number (and percentage) of RSRZ outliers, followed by percent RSRZ outliers for the chain as percentile scores relative to all X-ray entries and entries of similar resolution. The OWAB column contains the minimum, median, 95<sup>th</sup> percentile and maximum values of the occupancy-weighted average B-factor per residue. The column labelled ‘Q< 0.9’ lists the number of (and percentage) of residues with an average occupancy less than 0.9.

Mol	Chain	Analysed	<RSRZ>	#RSRZ>2	OWAB(Å <sup>2</sup> )	Q<0.9
1	A	238/241 (98%)	0.14	7 (2%) 51 50	23, 33, 51, 66	0
1	B	238/241 (98%)	0.27	20 (8%) 11 10	21, 33, 66, 81	0
1	C	238/241 (98%)	0.06	7 (2%) 51 50	21, 32, 51, 62	0
1	D	238/241 (98%)	0.37	18 (7%) 13 13	28, 43, 68, 80	1 (0%)
1	E	238/241 (98%)	0.47	23 (9%) 7 7	30, 45, 78, 92	0
All	All	1190/1205 (98%)	0.26	75 (6%) 20 19	21, 37, 68, 92	1 (0%)

All (75) RSRZ outliers are listed below:

Mol	Chain	Res	Type	RSRZ
1	E	1	ALA	8.1
1	A	1	ALA	7.2
1	E	35	ILE	7.2
1	B	1	ALA	7.1
1	E	128	SER	6.6
1	D	128	SER	6.3
1	B	238	GLN	6.1
1	C	1	ALA	5.7
1	A	128	SER	5.3
1	C	128	SER	5.2
1	B	34	VAL	4.6
1	E	49	GLY	4.5
1	D	35	ILE	4.4
1	E	32	SER	4.3
1	B	237	ALA	4.2
1	E	127	GLU	4.0
1	E	2	ASP	3.9
1	D	49	GLY	3.9
1	B	2	ASP	3.8
1	D	129	GLY	3.7

*Continued on next page...*

*Continued from previous page...*

Mol	Chain	Res	Type	RSRZ
1	B	35	ILE	3.6
1	E	4	GLU	3.5
1	E	237	ALA	3.5
1	B	49	GLY	3.5
1	C	2	ASP	3.4
1	D	236	PHE	3.4
1	D	31	GLU	3.4
1	E	31	GLU	3.3
1	B	31	GLU	3.3
1	E	37	VAL	3.3
1	B	4	GLU	3.2
1	D	130	SER	3.2
1	E	48	SER	3.2
1	E	130	SER	3.2
1	B	30	GLY	3.2
1	D	1	ALA	3.1
1	A	127	GLU	3.1
1	B	27	ASP	3.1
1	E	236	PHE	3.0
1	A	2	ASP	3.0
1	E	24	ASP	3.0
1	D	32	SER	2.9
1	D	211[A]	PHE	2.8
1	B	234	GLU	2.8
1	E	26	TRP	2.8
1	D	169	LYS	2.8
1	E	29	PRO	2.7
1	E	38	ALA	2.7
1	B	28	LEU	2.7
1	E	5	LYS	2.7
1	E	28	LEU	2.6
1	D	34	VAL	2.6
1	E	129	GLY	2.6
1	A	123	GLN	2.5
1	B	46	GLN	2.5
1	D	2	ASP	2.5
1	B	3	ARG	2.4
1	B	236	PHE	2.4
1	E	27	ASP	2.4
1	D	237	ALA	2.4
1	D	233	LEU	2.3
1	D	127	GLU	2.3

*Continued on next page...*

*Continued from previous page...*

Mol	Chain	Res	Type	RSRZ
1	B	48	SER	2.3
1	C	236	PHE	2.3
1	A	26	TRP	2.2
1	B	45	GLU	2.2
1	A	4	GLU	2.2
1	C	45	GLU	2.2
1	B	26	TRP	2.2
1	E	107	LYS	2.2
1	D	123	GLN	2.2
1	D	24	ASP	2.2
1	C	27	ASP	2.1
1	C	211[A]	PHE	2.1
1	B	23	HIS	2.0

## 6.2 Non-standard residues in protein, DNA, RNA chains [i](#)

There are no non-standard protein/DNA/RNA residues in this entry.

## 6.3 Carbohydrates [i](#)

There are no carbohydrates in this entry.

## 6.4 Ligands [i](#)

In the following table, the Atoms column lists the number of modelled atoms in the group and the number defined in the chemical component dictionary. The B-factors column lists the minimum, median, 95<sup>th</sup> percentile and maximum values of B factors of atoms in the group. The column labelled 'Q< 0.9' lists the number of atoms with occupancy less than 0.9.

Mol	Type	Chain	Res	Atoms	RSCC	RSR	B-factors( $\text{\AA}^2$ )	Q<0.9
5	EDO	A	244	4/4	0.72	0.21	44,46,47,47	0
5	EDO	C	243	4/4	0.81	0.20	26,29,31,33	0
5	EDO	A	245	4/4	0.85	0.14	36,37,40,40	0
3	PO4	C	240	5/5	0.88	0.19	32,36,44,44	0
5	EDO	B	245	4/4	0.88	0.24	33,38,39,45	0
5	EDO	E	245	4/4	0.91	0.16	52,52,53,53	0
5	EDO	B	244	4/4	0.92	0.15	27,31,33,34	0
3	PO4	E	240	5/5	0.92	0.15	41,42,45,48	0
5	EDO	D	244	4/4	0.92	0.16	43,46,46,47	0
3	PO4	D	242	5/5	0.92	0.17	63,64,64,64	5

*Continued on next page...*

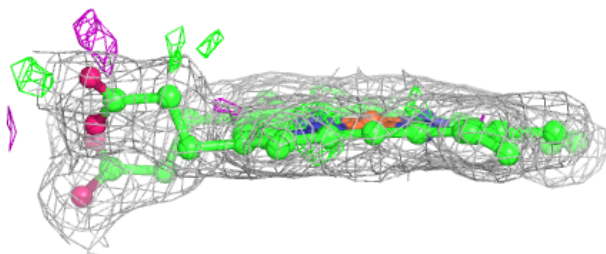
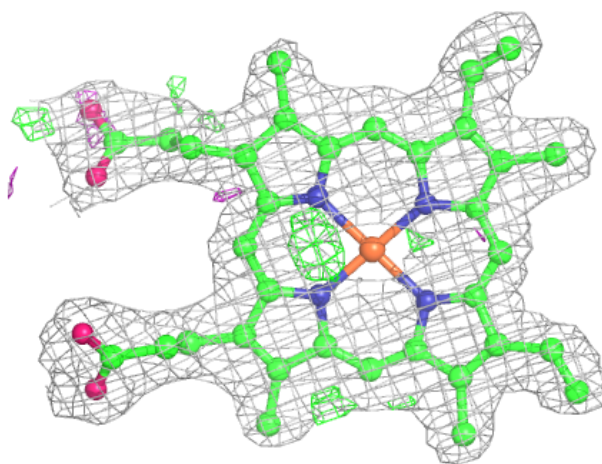
*Continued from previous page...*

Mol	Type	Chain	Res	Atoms	RSCC	RSR	B-factors( $\text{\AA}^2$ )	Q<0.9
5	EDO	C	244	4/4	0.92	0.12	40,42,42,42	0
3	PO4	C	241	5/5	0.92	0.20	53,55,56,57	5
5	EDO	E	246	4/4	0.92	0.19	34,39,40,41	0
3	PO4	D	240	5/5	0.93	0.12	36,37,38,38	0
3	PO4	B	242	5/5	0.94	0.17	52,53,54,55	5
3	PO4	D	241	5/5	0.94	0.15	39,40,46,46	0
3	PO4	B	240	5/5	0.95	0.12	32,33,34,35	0
3	PO4	A	242	5/5	0.95	0.17	53,54,55,55	5
3	PO4	A	241	5/5	0.95	0.09	31,33,34,35	0
3	PO4	E	243	5/5	0.95	0.15	54,55,55,55	5
3	PO4	E	242	5/5	0.96	0.12	42,43,44,45	0
3	PO4	E	241	5/5	0.96	0.19	39,42,42,45	0
2	HEM	E	239	43/43	0.97	0.09	25,28,33,36	0
3	PO4	B	241	5/5	0.97	0.14	32,32,34,37	0
4	IMD	D	243	5/5	0.97	0.10	32,32,33,35	0
3	PO4	A	240	5/5	0.97	0.08	32,32,36,37	0
4	IMD	E	244	5/5	0.98	0.11	31,32,33,33	0
2	HEM	D	239	43/43	0.98	0.08	24,28,34,37	0
4	IMD	C	242	5/5	0.98	0.09	23,23,25,25	0
2	HEM	B	239	43/43	0.98	0.08	17,21,28,33	0
2	HEM	C	239	43/43	0.98	0.08	19,22,28,33	0
4	IMD	A	243	5/5	0.98	0.07	26,26,26,28	0
2	HEM	A	239	43/43	0.99	0.08	21,25,29,31	0
4	IMD	B	243	5/5	0.99	0.05	24,24,27,27	0

The following is a graphical depiction of the model fit to experimental electron density of all instances of the Ligand of Interest. In addition, ligands with molecular weight > 250 and outliers as shown on the geometry validation Tables will also be included. Each fit is shown from different orientation to approximate a three-dimensional view.

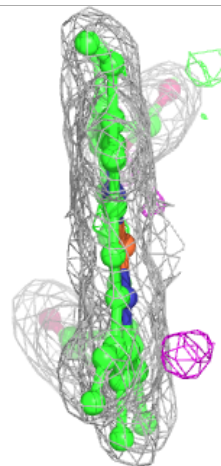
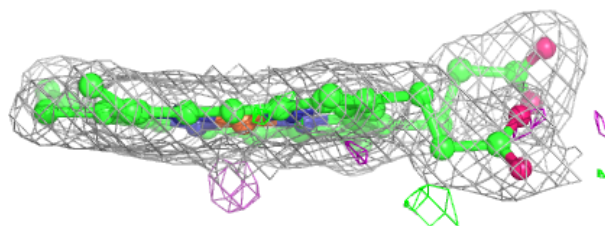
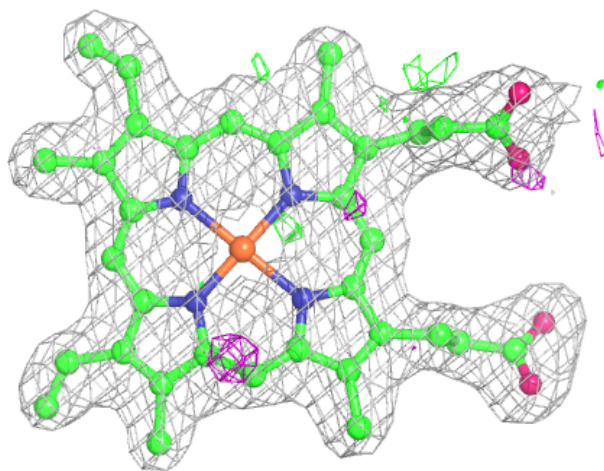
**Electron density around HEM E 239:**

$2mF_o-DF_c$  (at 0.7 rmsd) in gray  
 $mF_o-DF_c$  (at 3 rmsd) in purple (negative)  
and green (positive)



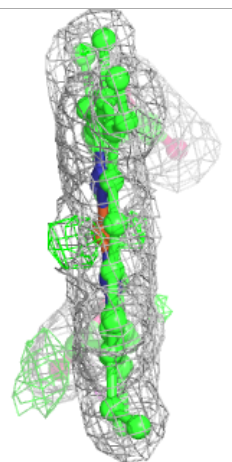
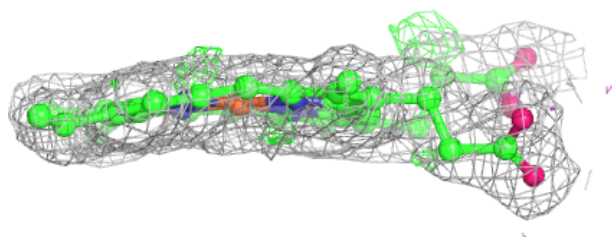
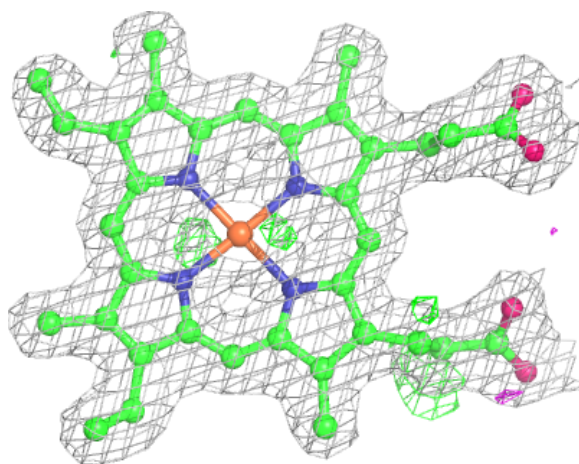
**Electron density around HEM D 239:**

$2mF_o-DF_c$  (at 0.7 rmsd) in gray  
 $mF_o-DF_c$  (at 3 rmsd) in purple (negative)  
and green (positive)



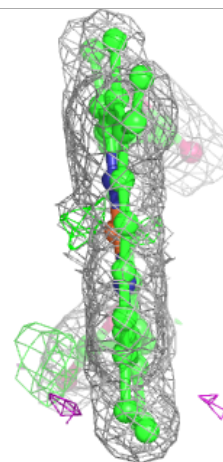
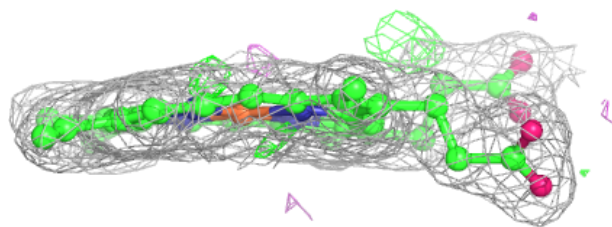
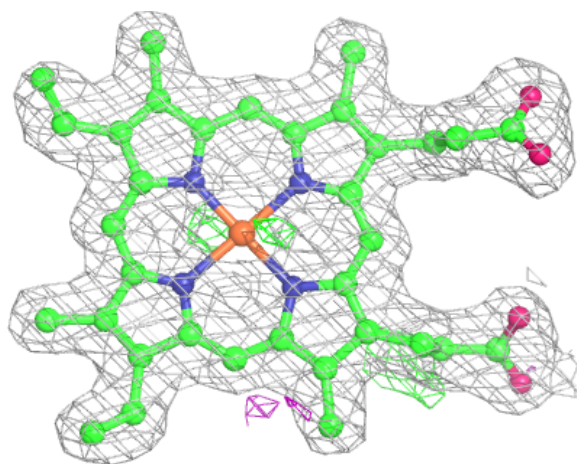
**Electron density around HEM B 239:**

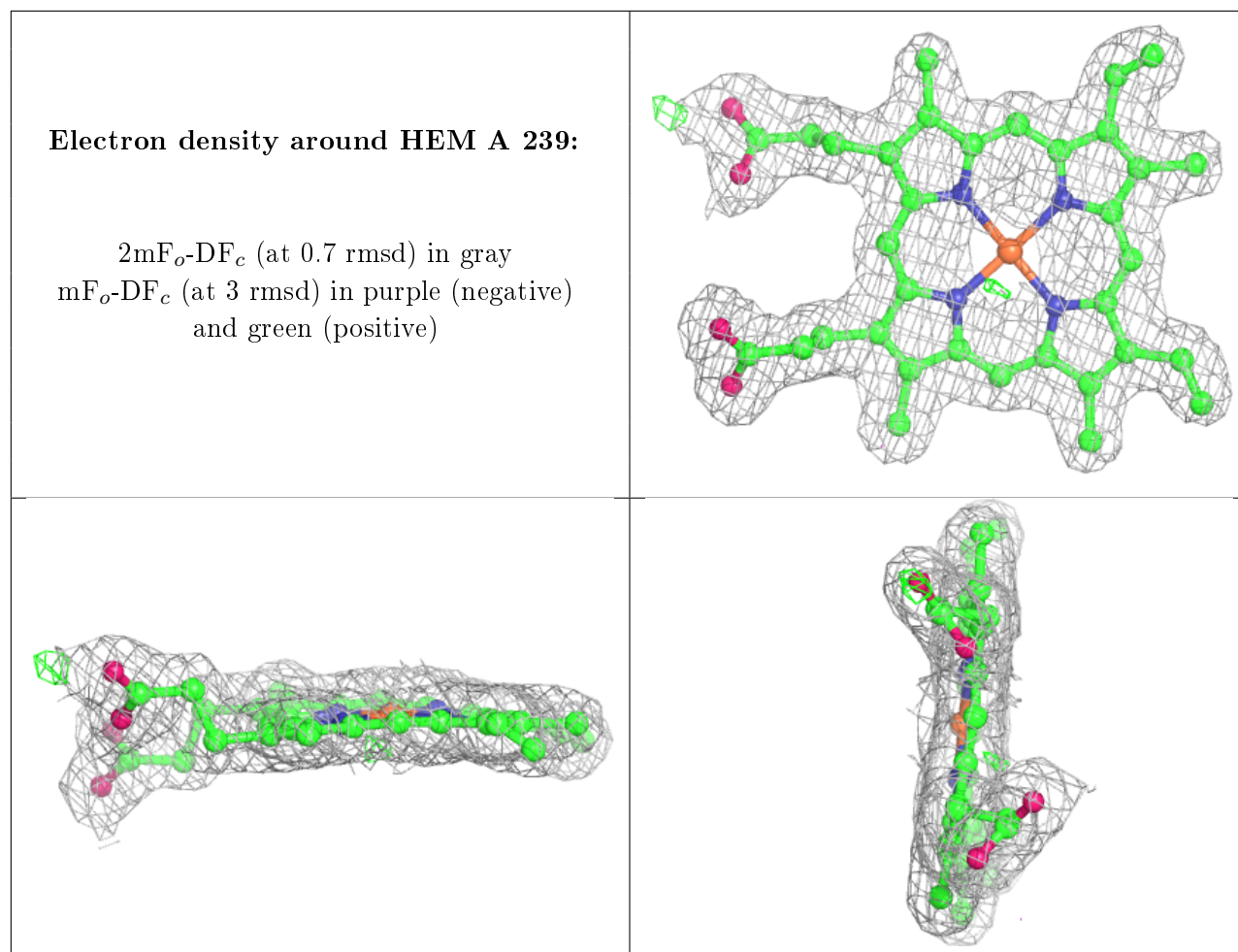
$2mF_o-DF_c$  (at 0.7 rmsd) in gray  
 $mF_o-DF_c$  (at 3 rmsd) in purple (negative)  
and green (positive)



**Electron density around HEM C 239:**

$2mF_o-DF_c$  (at 0.7 rmsd) in gray  
 $mF_o-DF_c$  (at 3 rmsd) in purple (negative)  
and green (positive)





## 6.5 Other polymers [i](#)

There are no such residues in this entry.