



wwPDB X-ray Structure Validation Summary Report ⓘ

May 14, 2020 – 02:43 am BST

PDB ID : 2NPF
Title : Structure of eEF2 in complex with moriniafungin
Authors : Soe, R.; Mosley, R.T.; Andersen, G.R.
Deposited on : 2006-10-27
Resolution : 2.90 Å(reported)

This is a wwPDB X-ray Structure Validation Summary Report for a publicly released PDB entry.

We welcome your comments at validation@mail.wwpdb.org

A user guide is available at

<https://www.wwpdb.org/validation/2017/XrayValidationReportHelp>

with specific help available everywhere you see the ⓘ symbol.

The following versions of software and data (see [references ⓘ](#)) were used in the production of this report:

MolProbity : 4.02b-467
Mogul : 1.8.5 (274361), CSD as541be (2020)
Xtriage (Phenix) : 1.13
EDS : 2.11
buster-report : 1.1.7 (2018)
Percentile statistics : 20191225.v01 (using entries in the PDB archive December 25th 2019)
Refmac : 5.8.0158
CCP4 : 7.0.044 (Gargrove)
Ideal geometry (proteins) : Engh & Huber (2001)
Ideal geometry (DNA, RNA) : Parkinson et al. (1996)
Validation Pipeline (wwPDB-VP) : 2.11

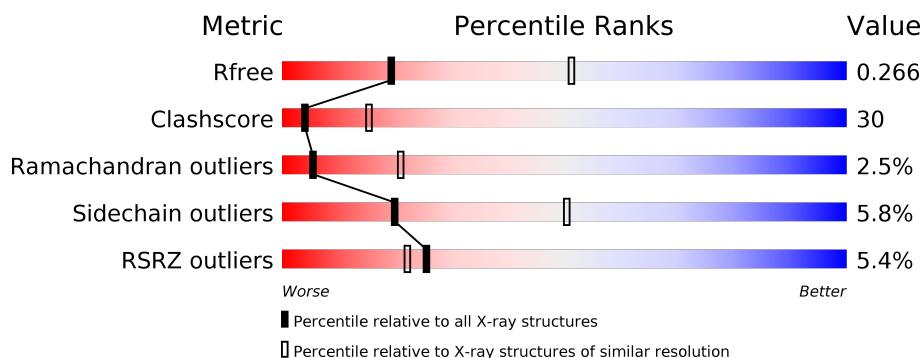
1 Overall quality at a glance

The following experimental techniques were used to determine the structure:

X-RAY DIFFRACTION

The reported resolution of this entry is 2.90 Å.

Percentile scores (ranging between 0-100) for global validation metrics of the entry are shown in the following graphic. The table shows the number of entries on which the scores are based.



Metric	Whole archive (#Entries)	Similar resolution (#Entries, resolution range(Å))
R_{free}	130704	1957 (2.90-2.90)
Clashscore	141614	2172 (2.90-2.90)
Ramachandran outliers	138981	2115 (2.90-2.90)
Sidechain outliers	138945	2117 (2.90-2.90)
RSRZ outliers	127900	1906 (2.90-2.90)

The table below summarises the geometric issues observed across the polymeric chains and their fit to the electron density. The red, orange, yellow and green segments on the lower bar indicate the fraction of residues that contain outliers for ≥ 3 , 2, 1 and 0 types of geometric quality criteria respectively. A grey segment represents the fraction of residues that are not modelled. The numeric value for each fraction is indicated below the corresponding segment, with a dot representing fractions $\leq 5\%$. The upper red bar (where present) indicates the fraction of residues that have poor fit to the electron density. The numeric value is given above the bar.

Mol	Chain	Length	Quality of chain
1	A	842	<div> <div>3%</div> <div> <div></div> <div>53%</div> <div>40%</div> <div>• •</div> </div> </div>
1	B	842	<div> <div>7%</div> <div> <div></div> <div>47%</div> <div>46%</div> <div>• •</div> </div> </div>

2 Entry composition [i](#)

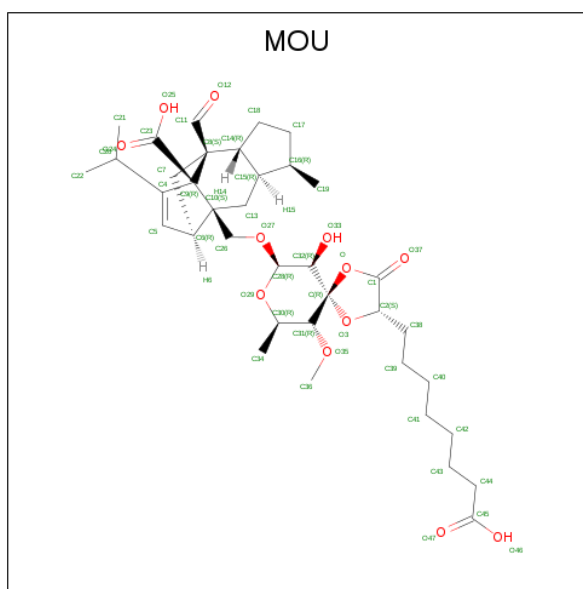
There are 3 unique types of molecules in this entry. The entry contains 12885 atoms, of which 0 are hydrogens and 0 are deuteriums.

In the tables below, the ZeroOcc column contains the number of atoms modelled with zero occupancy, the AltConf column contains the number of residues with at least one atom in alternate conformation and the Trace column contains the number of residues modelled with at most 2 atoms.

- Molecule 1 is a protein called Elongation factor 2.

Mol	Chain	Residues	Atoms					ZeroOcc	AltConf	Trace
1	A	822	Total	C	N	O	S	0	0	0
			6397	4070	1092	1205	30			
1	B	813	Total	C	N	O	S	0	0	0
			6334	4032	1078	1194	30			

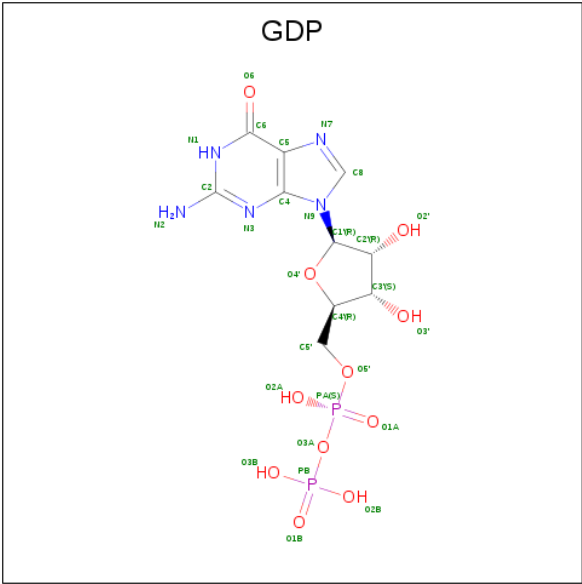
- Molecule 2 is (1S,4R,5R,9S,11S)-2-({[(2S,5R,6R,7R,9S,10R)-2-(7-CARBOXYHEPTYL)-6-HYDROXY-10-METHOXY-9-METHYL-3-OXO-1,4,8-TRIOXASPIRO[4.5]DEC-7-YL]OXY}METHYL)-9-FORMYL-13-ISOPROPYL-5-METHYLTETRACYCLO[7.4.0.0.2,11.04.8]TRIDEC-12-ENE-1-CARBOXYLIC ACID (three-letter code: MOU) (formula: C₃₇H₅₄O₁₂).



Mol	Chain	Residues	Atoms			ZeroOcc	AltConf
2	A	1	Total	C	O	0	0
			49	37	12		
2	B	1	Total	C	O	0	0
			49	37	12		

- Molecule 3 is GUANOSINE-5'-DIPHOSPHATE (three-letter code: GDP) (formula:

C₁₀H₁₅N₅O₁₁P₂).

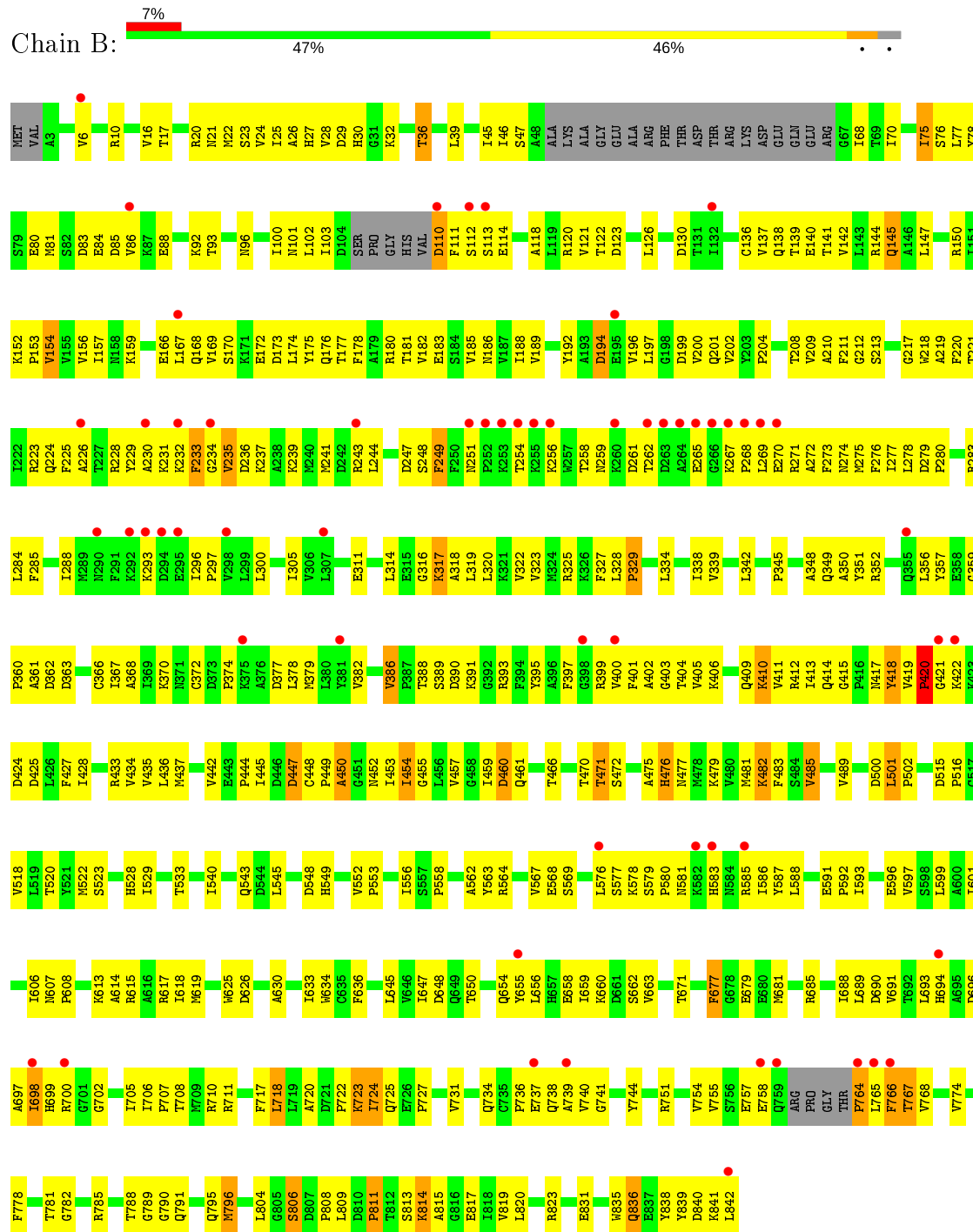


Mol	Chain	Residues	Atoms					ZeroOcc	AltConf
3	A	1	Total	C	N	O	P	0	0
			28	10	5	11	2		
3	B	1	Total	C	N	O	P	0	0
			28	10	5	11	2		

- Molecule 1: Elongation factor 2



• Molecule 1: Elongation factor 2



4 Data and refinement statistics

Property	Value	Source
Space group	P 1 21 1	Depositor
Cell constants a, b, c, α , β , γ	59.97Å 159.12Å 112.14Å 90.00° 97.83° 90.00°	Depositor
Resolution (Å)	25.00 – 2.90 33.70 – 2.90	Depositor EDS
% Data completeness (in resolution range)	99.5 (25.00-2.90) 99.6 (33.70-2.90)	Depositor EDS
R_{merge}	(Not available)	Depositor
R_{sym}	0.05	Depositor
$\langle I/\sigma(I) \rangle$ ¹	3.46 (at 2.90Å)	Xtriage
Refinement program	CNS 1.1	Depositor
R, R_{free}	0.230 , 0.271 0.226 , 0.266	Depositor DCC
R_{free} test set	1162 reflections (2.53%)	wwPDB-VP
Wilson B-factor (Å ²)	69.6	Xtriage
Anisotropy	0.448	Xtriage
Bulk solvent k_{sol} (e/Å ³), B_{sol} (Å ²)	0.31 , 61.3	EDS
L-test for twinning ²	$\langle L \rangle = 0.48$, $\langle L^2 \rangle = 0.31$	Xtriage
Estimated twinning fraction	No twinning to report.	Xtriage
F_o, F_c correlation	0.93	EDS
Total number of atoms	12885	wwPDB-VP
Average B, all atoms (Å ²)	78.0	wwPDB-VP

Xtriage's analysis on translational NCS is as follows: *The largest off-origin peak in the Patterson function is 3.32% of the height of the origin peak. No significant pseudotranslation is detected.*

¹Intensities estimated from amplitudes.

²Theoretical values of $\langle |L| \rangle$, $\langle L^2 \rangle$ for acentric reflections are 0.5, 0.333 respectively for untwinned datasets, and 0.375, 0.2 for perfectly twinned datasets.

5 Model quality [i](#)

5.1 Standard geometry [i](#)

Bond lengths and bond angles in the following residue types are not validated in this section: GDP, MOU

The Z score for a bond length (or angle) is the number of standard deviations the observed value is removed from the expected value. A bond length (or angle) with $|Z| > 5$ is considered an outlier worth inspection. RMSZ is the root-mean-square of all Z scores of the bond lengths (or angles).

Mol	Chain	Bond lengths		Bond angles	
		RMSZ	# Z >5	RMSZ	# Z >5
1	A	0.44	0/6521	0.70	0/8831
1	B	0.40	1/6453 (0.0%)	0.74	6/8733 (0.1%)
All	All	0.42	1/12974 (0.0%)	0.72	6/17564 (0.0%)

Chiral center outliers are detected by calculating the chiral volume of a chiral center and verifying if the center is modelled as a planar moiety or with the opposite hand. A planarity outlier is detected by checking planarity of atoms in a peptide group, atoms in a mainchain group or atoms of a sidechain that are expected to be planar.

Mol	Chain	#Chirality outliers	#Planarity outliers
1	B	0	2

All (1) bond length outliers are listed below:

Mol	Chain	Res	Type	Atoms	Z	Observed(Å)	Ideal(Å)
1	B	764	PRO	C-N	-8.45	1.14	1.34

The worst 5 of 6 bond angle outliers are listed below:

Mol	Chain	Res	Type	Atoms	Z	Observed(°)	Ideal(°)
1	B	764	PRO	O-C-N	-22.15	87.26	122.70
1	B	764	PRO	C-N-CA	15.74	161.05	121.70
1	B	764	PRO	CA-C-N	14.56	149.24	117.20
1	B	764	PRO	CA-N-CD	-8.86	99.09	111.50
1	B	767	THR	N-CA-C	8.33	133.50	111.00

There are no chirality outliers.

All (2) planarity outliers are listed below:

Mol	Chain	Res	Type	Group
1	B	764	PRO	Mainchain,Peptide

5.2 Too-close contacts [i](#)

In the following table, the Non-H and H(model) columns list the number of non-hydrogen atoms and hydrogen atoms in the chain respectively. The H(added) column lists the number of hydrogen atoms added and optimized by MolProbity. The Clashes column lists the number of clashes within the asymmetric unit, whereas Symm-Clashes lists symmetry related clashes.

Mol	Chain	Non-H	H(model)	H(added)	Clashes	Symm-Clashes
1	A	6397	0	6465	354	0
1	B	6334	0	6402	424	0
2	A	49	0	52	1	0
2	B	49	0	52	1	0
3	A	28	0	12	4	0
3	B	28	0	12	2	0
All	All	12885	0	12995	778	0

The all-atom clashscore is defined as the number of clashes found per 1000 atoms (including hydrogen atoms). The all-atom clashscore for this structure is 30.

The worst 5 of 778 close contacts within the same asymmetric unit are listed below, sorted by their clash magnitude.

Atom-1	Atom-2	Interatomic distance (Å)	Clash overlap (Å)
1:A:764:PRO:O	1:A:765:LEU:CG	1.75	1.32
1:B:737:GLU:HA	1:B:766:PHE:HZ	1.04	1.19
1:B:737:GLU:HA	1:B:766:PHE:CZ	1.80	1.17
1:B:296:ILE:HG13	1:B:297:PRO:HD3	1.27	1.15
1:B:360:PRO:HG2	1:B:363:ASP:HB2	1.40	1.03

There are no symmetry-related clashes.

5.3 Torsion angles [i](#)

5.3.1 Protein backbone [i](#)

In the following table, the Percentiles column shows the percent Ramachandran outliers of the chain as a percentile score with respect to all X-ray entries followed by that with respect to entries of similar resolution.

The Analysed column shows the number of residues for which the backbone conformation was

analysed, and the total number of residues.

Mol	Chain	Analysed	Favoured	Allowed	Outliers	Percentiles	
1	A	818/842 (97%)	729 (89%)	67 (8%)	22 (3%)	5	19
1	B	805/842 (96%)	692 (86%)	95 (12%)	18 (2%)	6	24
All	All	1623/1684 (96%)	1421 (88%)	162 (10%)	40 (2%)	5	21

5 of 40 Ramachandran outliers are listed below:

Mol	Chain	Res	Type
1	A	111	PHE
1	A	424	ASP
1	A	765	LEU
1	B	112	SER
1	B	233	PHE

5.3.2 Protein sidechains ⓘ

In the following table, the Percentiles column shows the percent sidechain outliers of the chain as a percentile score with respect to all X-ray entries followed by that with respect to entries of similar resolution.

The Analysed column shows the number of residues for which the sidechain conformation was analysed, and the total number of residues.

Mol	Chain	Analysed	Rotameric	Outliers	Percentiles	
1	A	699/715 (98%)	661 (95%)	38 (5%)	22	54
1	B	692/715 (97%)	650 (94%)	42 (6%)	18	48
All	All	1391/1430 (97%)	1311 (94%)	80 (6%)	20	50

5 of 80 residues with a non-rotameric sidechain are listed below:

Mol	Chain	Res	Type
1	A	806	SER
1	B	183	GLU
1	B	723	LYS
1	A	829	LYS
1	B	110	ASP

Some sidechains can be flipped to improve hydrogen bonding and reduce clashes. 5 of 25 such sidechains are listed below:

Mol	Chain	Res	Type
1	B	145	GLN
1	B	201	GLN
1	B	791	GLN
1	B	168	GLN
1	B	349	GLN

5.3.3 RNA [i](#)

There are no RNA molecules in this entry.

5.4 Non-standard residues in protein, DNA, RNA chains [i](#)

There are no non-standard protein/DNA/RNA residues in this entry.

5.5 Carbohydrates [i](#)

There are no carbohydrates in this entry.

5.6 Ligand geometry [i](#)

4 ligands are modelled in this entry.

In the following table, the Counts columns list the number of bonds (or angles) for which Mogul statistics could be retrieved, the number of bonds (or angles) that are observed in the model and the number of bonds (or angles) that are defined in the Chemical Component Dictionary. The Link column lists molecule types, if any, to which the group is linked. The Z score for a bond length (or angle) is the number of standard deviations the observed value is removed from the expected value. A bond length (or angle) with $|Z| > 2$ is considered an outlier worth inspection. RMSZ is the root-mean-square of all Z scores of the bond lengths (or angles).

Mol	Type	Chain	Res	Link	Bond lengths			Bond angles		
					Counts	RMSZ	# $ Z > 2$	Counts	RMSZ	# $ Z > 2$
3	GDP	A	902	-	24,30,30	1.49	4 (16%)	31,47,47	1.88	5 (16%)
3	GDP	B	1902	-	24,30,30	1.49	4 (16%)	31,47,47	1.96	5 (16%)
2	MOU	B	1901	-	45,54,54	2.40	12 (26%)	37,85,85	1.49	4 (10%)
2	MOU	A	901	-	45,54,54	2.43	10 (22%)	37,85,85	1.52	4 (10%)

In the following table, the Chirals column lists the number of chiral outliers, the number of chiral centers analysed, the number of these observed in the model and the number defined in the Chemical Component Dictionary. Similar counts are reported in the Torsion and Rings columns. '-' means no outliers of that kind were identified.

Mol	Type	Chain	Res	Link	Chirals	Torsions	Rings
3	GDP	A	902	-	-	3/12/32/32	0/3/3/3
3	GDP	B	1902	-	-	2/12/32/32	0/3/3/3
2	MOU	B	1901	-	-	5/23/132/132	0/8/6/6
2	MOU	A	901	-	-	3/23/132/132	0/8/6/6

The worst 5 of 30 bond length outliers are listed below:

Mol	Chain	Res	Type	Atoms	Z	Observed(Å)	Ideal(Å)
2	B	1901	MOU	C9-C23	7.61	1.63	1.50
2	A	901	MOU	C9-C23	7.40	1.62	1.50
2	A	901	MOU	C5-C4	6.99	1.43	1.32
2	B	1901	MOU	C5-C4	6.57	1.42	1.32
2	A	901	MOU	C13-C10	5.78	1.63	1.54

The worst 5 of 18 bond angle outliers are listed below:

Mol	Chain	Res	Type	Atoms	Z	Observed(°)	Ideal(°)
3	B	1902	GDP	C5-C6-N1	-6.39	114.69	123.43
3	A	902	GDP	C5-C6-N1	-6.27	114.85	123.43
3	B	1902	GDP	C6-N1-C2	5.37	124.46	115.93
2	A	901	MOU	C7-C6-C10	5.15	113.58	103.54
2	B	1901	MOU	C7-C6-C10	5.12	113.52	103.54

There are no chirality outliers.

5 of 13 torsion outliers are listed below:

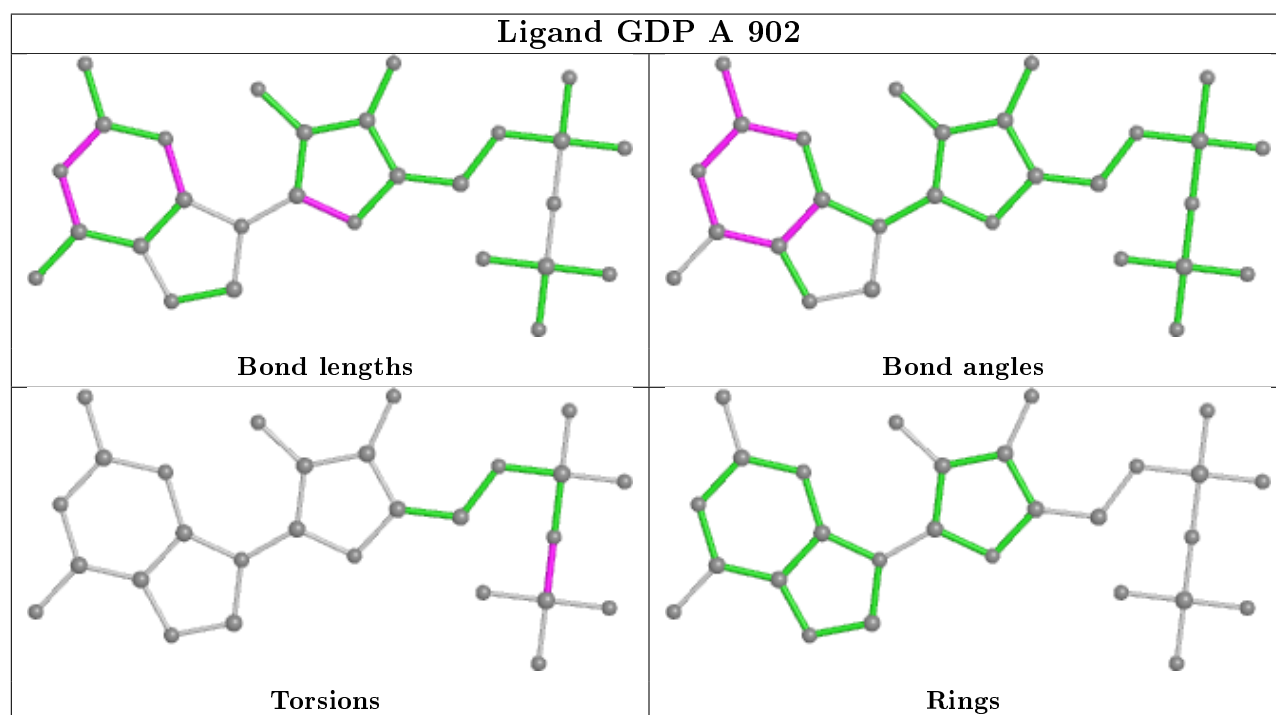
Mol	Chain	Res	Type	Atoms
3	A	902	GDP	PA-O3A-PB-O2B
3	A	902	GDP	PA-O3A-PB-O3B
2	B	1901	MOU	C42-C43-C44-C45
2	A	901	MOU	C42-C43-C44-C45
2	A	901	MOU	C41-C42-C43-C44

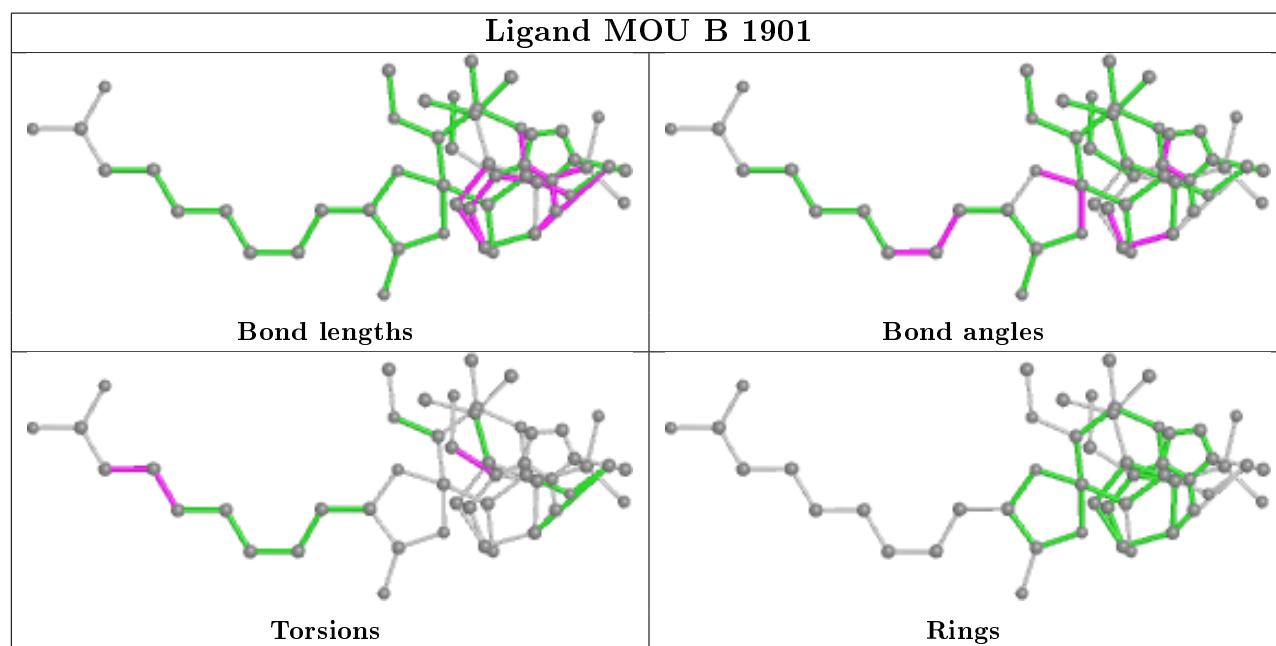
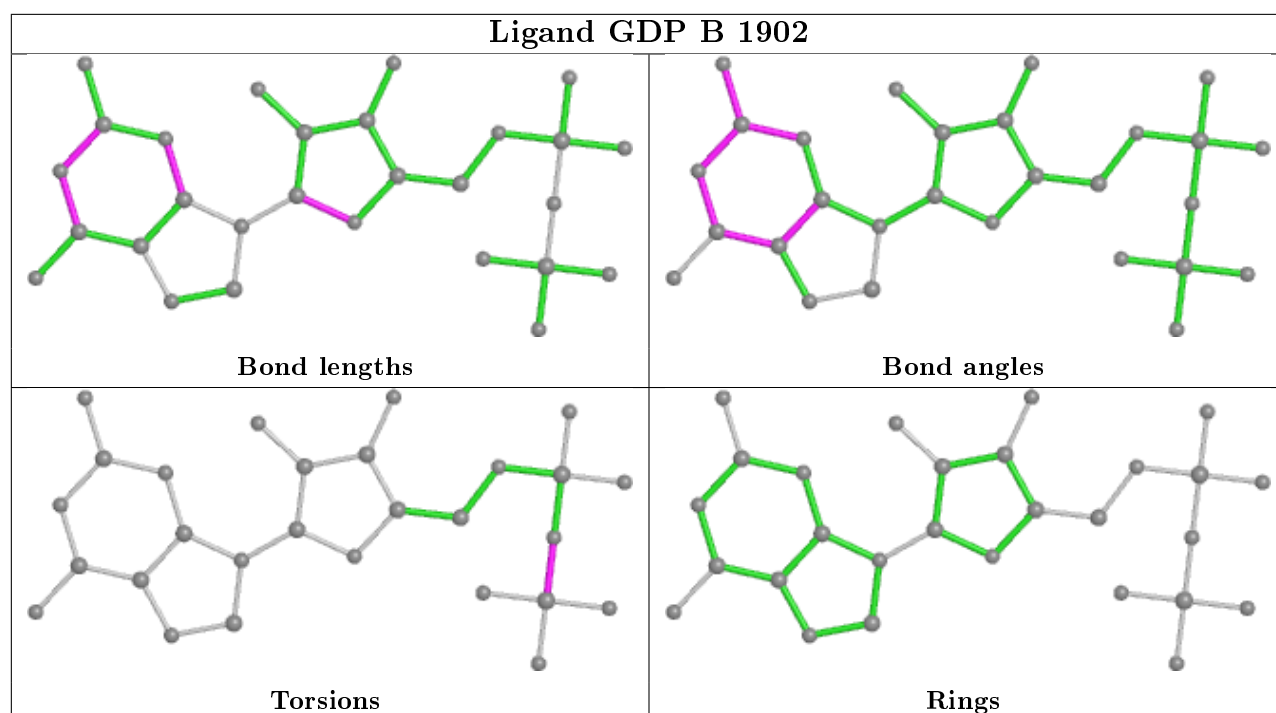
There are no ring outliers.

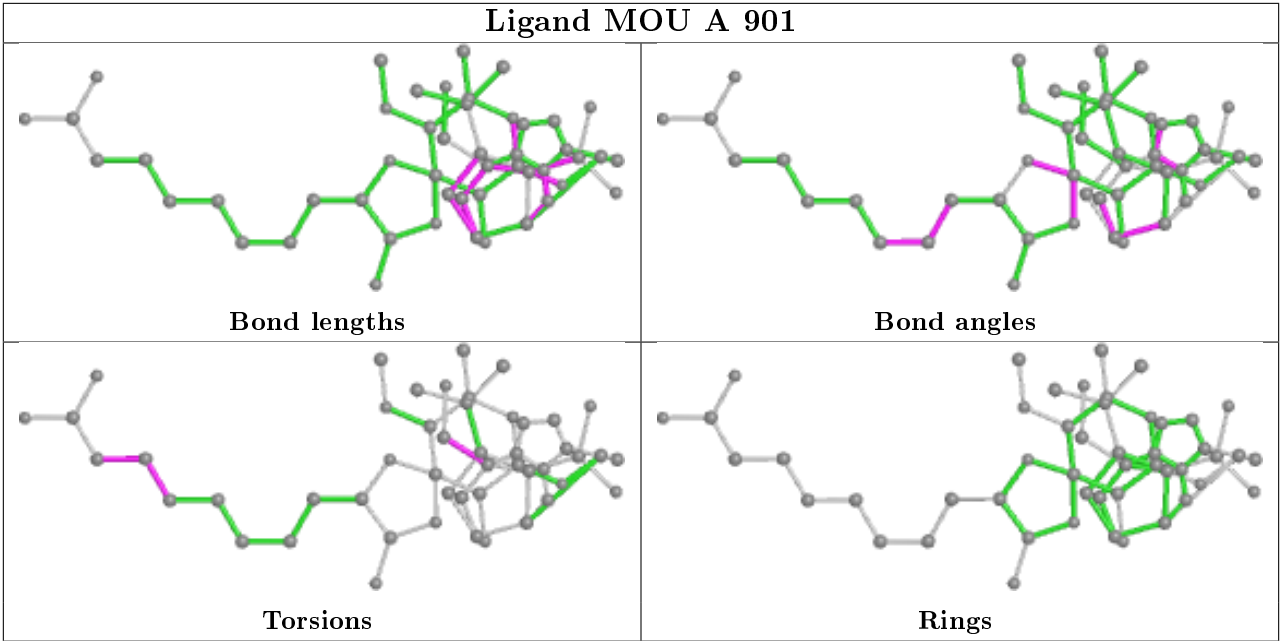
4 monomers are involved in 8 short contacts:

Mol	Chain	Res	Type	Clashes	Symm-Clashes
3	A	902	GDP	4	0
3	B	1902	GDP	2	0
2	B	1901	MOU	1	0
2	A	901	MOU	1	0

The following is a two-dimensional graphical depiction of Mogul quality analysis of bond lengths, bond angles, torsion angles, and ring geometry for all instances of the Ligand of Interest. In addition, ligands with molecular weight > 250 and outliers as shown on the validation Tables will also be included. For torsion angles, if less than 5% of the Mogul distribution of torsion angles is within 10 degrees of the torsion angle in question, then that torsion angle is considered an outlier. Any bond that is central to one or more torsion angles identified as an outlier by Mogul will be highlighted in the graph. For rings, the root-mean-square deviation (RMSD) between the ring in question and similar rings identified by Mogul is calculated over all ring torsion angles. If the average RMSD is greater than 60 degrees and the minimal RMSD between the ring in question and any Mogul-identified rings is also greater than 60 degrees, then that ring is considered an outlier. The outliers are highlighted in purple. The color gray indicates Mogul did not find sufficient equivalents in the CSD to analyse the geometry.







5.7 Other polymers ⓘ

There are no such residues in this entry.

5.8 Polymer linkage issues ⓘ

The following chains have linkage breaks:

Mol	Chain	Number of breaks
1	B	1

All chain breaks are listed below:

Model	Chain	Residue-1	Atom-1	Residue-2	Atom-2	Distance (Å)
1	B	764:PRO	C	765:LEU	N	1.14

6 Fit of model and data [i](#)

6.1 Protein, DNA and RNA chains [i](#)

In the following table, the column labelled ‘#RSRZ> 2’ contains the number (and percentage) of RSRZ outliers, followed by percent RSRZ outliers for the chain as percentile scores relative to all X-ray entries and entries of similar resolution. The OWAB column contains the minimum, median, 95th percentile and maximum values of the occupancy-weighted average B-factor per residue. The column labelled ‘Q< 0.9’ lists the number of (and percentage) of residues with an average occupancy less than 0.9.

Mol	Chain	Analysed	<RSRZ>	#RSRZ>2	OWAB(Å ²)	Q<0.9
1	A	822/842 (97%)	0.04	29 (3%) 44 38	25, 62, 106, 133	0
1	B	813/842 (96%)	0.34	59 (7%) 15 11	37, 90, 125, 148	0
All	All	1635/1684 (97%)	0.19	88 (5%) 25 22	25, 76, 119, 148	0

The worst 5 of 88 RSRZ outliers are listed below:

Mol	Chain	Res	Type	RSRZ
1	B	266	GLY	7.0
1	B	113	SER	6.8
1	B	268	PRO	6.3
1	B	110	ASP	6.1
1	B	264	ALA	5.8

6.2 Non-standard residues in protein, DNA, RNA chains [i](#)

There are no non-standard protein/DNA/RNA residues in this entry.

6.3 Carbohydrates [i](#)

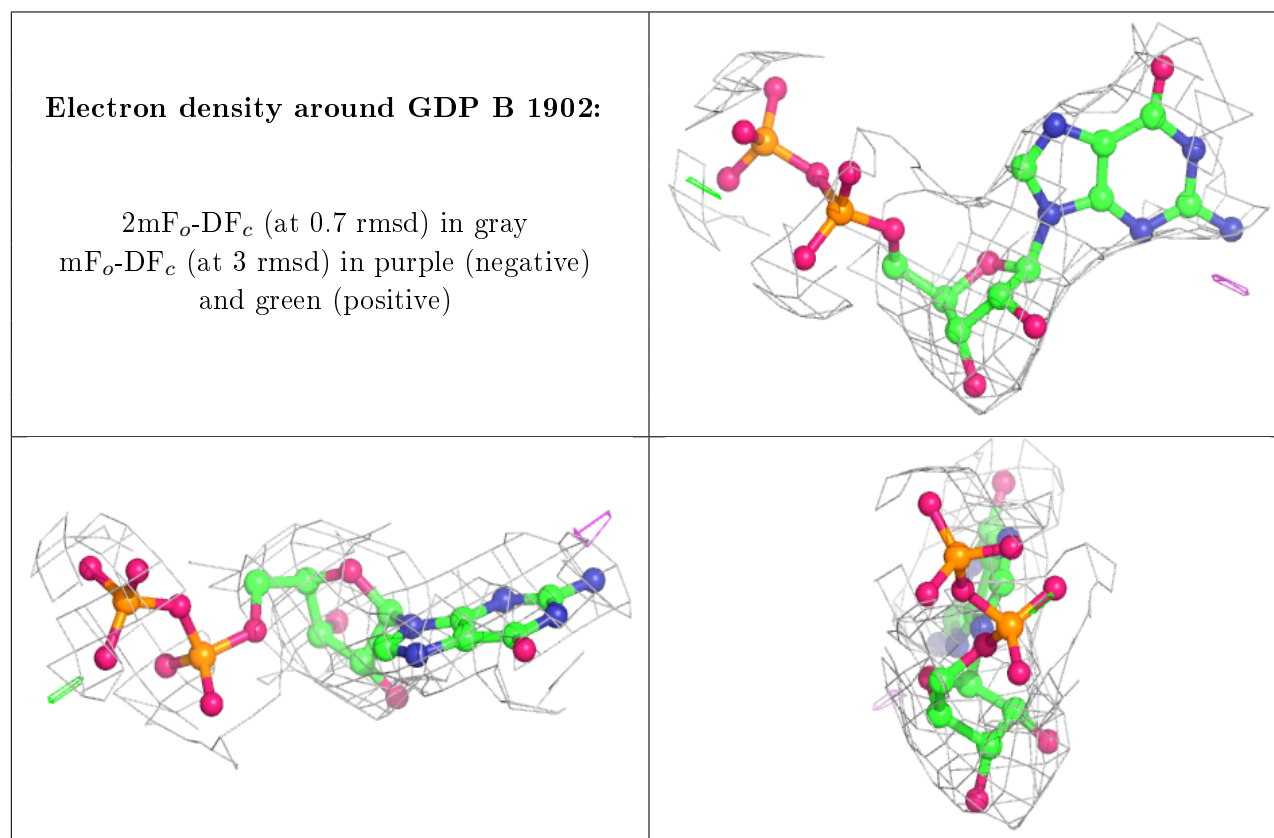
There are no carbohydrates in this entry.

6.4 Ligands [i](#)

In the following table, the Atoms column lists the number of modelled atoms in the group and the number defined in the chemical component dictionary. The B-factors column lists the minimum, median, 95th percentile and maximum values of B factors of atoms in the group. The column labelled ‘Q< 0.9’ lists the number of atoms with occupancy less than 0.9.

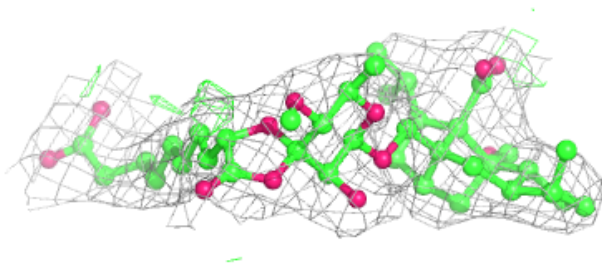
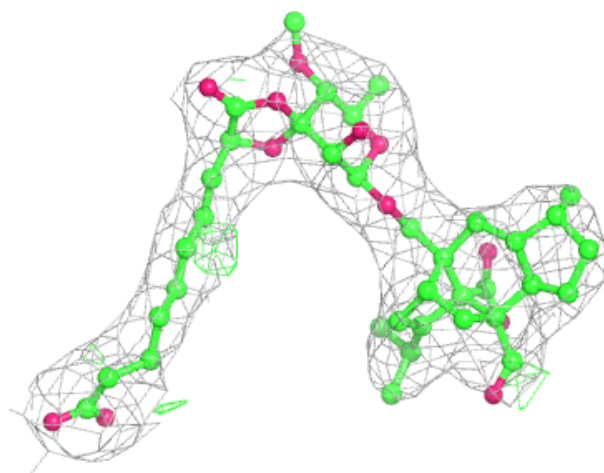
Mol	Type	Chain	Res	Atoms	RSCC	RSR	B-factors(\AA^2)	Q<0.9
3	GDP	B	1902	28/28	0.92	0.16	106,107,109,109	0
2	MOU	B	1901	49/49	0.94	0.19	51,55,62,66	0
2	MOU	A	901	49/49	0.96	0.20	29,39,59,65	0
3	GDP	A	902	28/28	0.97	0.13	48,54,60,61	0

The following is a graphical depiction of the model fit to experimental electron density of all instances of the Ligand of Interest. In addition, ligands with molecular weight > 250 and outliers as shown on the geometry validation Tables will also be included. Each fit is shown from different orientation to approximate a three-dimensional view.



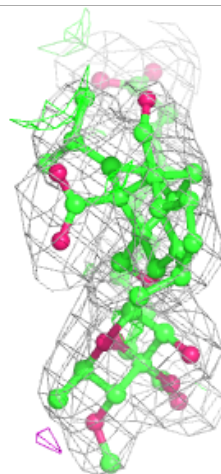
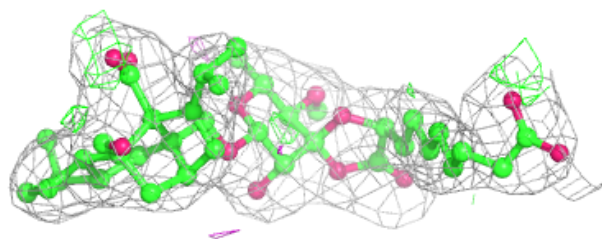
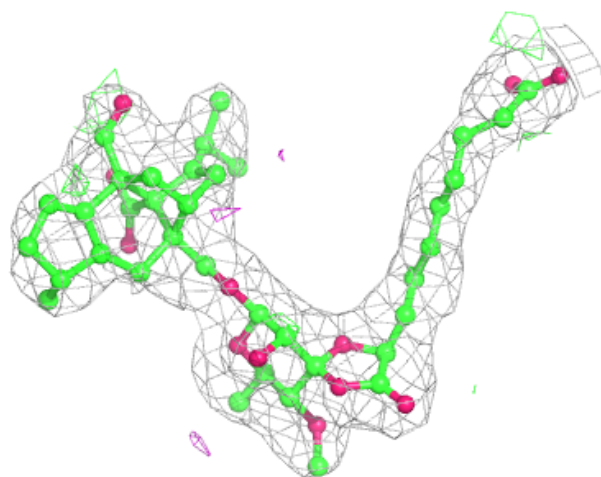
Electron density around MOU B 1901:

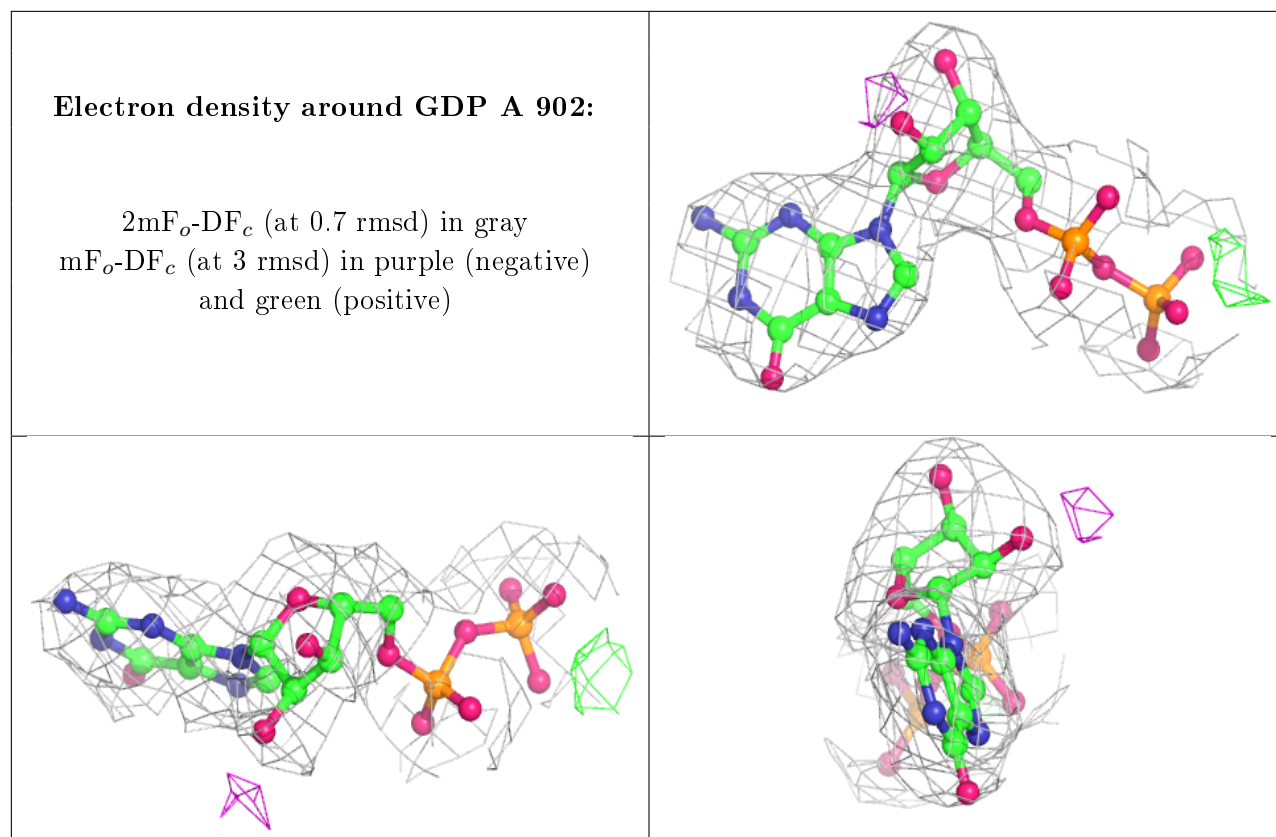
$2mF_o-DF_c$ (at 0.7 rmsd) in gray
 mF_o-DF_c (at 3 rmsd) in purple (negative)
and green (positive)



Electron density around MOU A 901:

$2mF_o-DF_c$ (at 0.7 rmsd) in gray
 mF_o-DF_c (at 3 rmsd) in purple (negative)
and green (positive)





6.5 Other polymers [i](#)

There are no such residues in this entry.