



wwPDB X-ray Structure Validation Summary Report ⓘ

Aug 21, 2020 – 10:31 AM BST

PDB ID : 6NPU
Title : C-abl Kinase domain with the activator(cmpd29), N-(1-(3,4-dichlorophenyl)-4,5-dihydro-1H-pyrazol-3-yl)acetamide
Authors : Campobasso, N.
Deposited on : 2019-01-18
Resolution : 2.33 Å(reported)

This is a wwPDB X-ray Structure Validation Summary Report for a publicly released PDB entry.

We welcome your comments at validation@mail.wwpdb.org

A user guide is available at

<https://www.wwpdb.org/validation/2017/XrayValidationReportHelp>

with specific help available everywhere you see the ⓘ symbol.

The following versions of software and data (see [references ⓘ](#)) were used in the production of this report:

MolProbity : 4.02b-467
Mogul : 1.8.5 (274361), CSD as541be (2020)
Xtriage (Phenix) : 1.13
EDS : 2.13.1
buster-report : 1.1.7 (2018)
Percentile statistics : 20191225.v01 (using entries in the PDB archive December 25th 2019)
Refmac : 5.8.0158
CCP4 : 7.0.044 (Gargrove)
Ideal geometry (proteins) : Engh & Huber (2001)
Ideal geometry (DNA, RNA) : Parkinson et al. (1996)
Validation Pipeline (wwPDB-VP) : 2.13.1

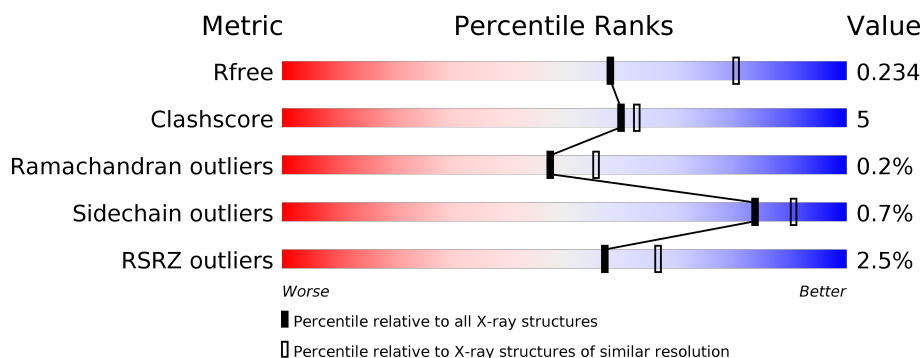
1 Overall quality at a glance

The following experimental techniques were used to determine the structure:

X-RAY DIFFRACTION

The reported resolution of this entry is 2.33 Å.

Percentile scores (ranging between 0-100) for global validation metrics of the entry are shown in the following graphic. The table shows the number of entries on which the scores are based.



Metric	Whole archive (#Entries)	Similar resolution (#Entries, resolution range(Å))
R_{free}	130704	2096 (2.36-2.32)
Clashscore	141614	2193 (2.36-2.32)
Ramachandran outliers	138981	2159 (2.36-2.32)
Sidechain outliers	138945	2160 (2.36-2.32)
RSRZ outliers	127900	2067 (2.36-2.32)

The table below summarises the geometric issues observed across the polymeric chains and their fit to the electron density. The red, orange, yellow and green segments on the lower bar indicate the fraction of residues that contain outliers for ≥ 3 , 2, 1 and 0 types of geometric quality criteria respectively. A grey segment represents the fraction of residues that are not modelled. The numeric value for each fraction is indicated below the corresponding segment, with a dot representing fractions $\leq 5\%$. The upper red bar (where present) indicates the fraction of residues that have poor fit to the electron density. The numeric value is given above the bar.

Mol	Chain	Length	Quality of chain
1	A	298	<div> <div>2%</div> <div> <div></div> <div>81%</div> <div>7%</div> <div>11%</div> </div> </div>
1	B	298	<div> <div>2%</div> <div> <div></div> <div>78%</div> <div>8%</div> <div>14%</div> </div> </div>

2 Entry composition [i](#)

There are 7 unique types of molecules in this entry. The entry contains 4456 atoms, of which 0 are hydrogens and 0 are deuteriums.

In the tables below, the ZeroOcc column contains the number of atoms modelled with zero occupancy, the AltConf column contains the number of residues with at least one atom in alternate conformation and the Trace column contains the number of residues modelled with at most 2 atoms.

- Molecule 1 is a protein called Tyrosine-protein kinase ABL1.

Mol	Chain	Residues	Atoms					ZeroOcc	AltConf	Trace
1	A	264	Total	C	N	O	S	0	0	0
			2135	1380	348	391	16			
1	B	257	Total	C	N	O	S	0	0	0
			2096	1354	339	388	15			

There are 28 discrepancies between the modelled and reference sequences:

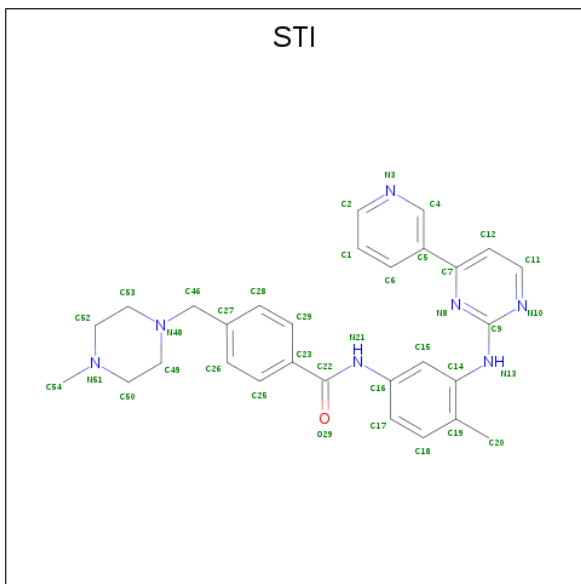
Chain	Residue	Modelled	Actual	Comment	Reference
A	234	MET	-	expression tag	UNP P00519
A	235	HIS	-	expression tag	UNP P00519
A	236	HIS	-	expression tag	UNP P00519
A	237	HIS	-	expression tag	UNP P00519
A	238	HIS	-	expression tag	UNP P00519
A	239	HIS	-	expression tag	UNP P00519
A	240	HIS	-	expression tag	UNP P00519
A	241	GLU	-	expression tag	UNP P00519
A	242	ASN	-	expression tag	UNP P00519
A	243	LEU	-	expression tag	UNP P00519
A	244	TYR	-	expression tag	UNP P00519
A	245	PHE	-	expression tag	UNP P00519
A	246	GLN	-	expression tag	UNP P00519
A	247	GLY	-	expression tag	UNP P00519
B	234	MET	-	expression tag	UNP P00519
B	235	HIS	-	expression tag	UNP P00519
B	236	HIS	-	expression tag	UNP P00519
B	237	HIS	-	expression tag	UNP P00519
B	238	HIS	-	expression tag	UNP P00519
B	239	HIS	-	expression tag	UNP P00519
B	240	HIS	-	expression tag	UNP P00519
B	241	GLU	-	expression tag	UNP P00519
B	242	ASN	-	expression tag	UNP P00519
B	243	LEU	-	expression tag	UNP P00519
B	244	TYR	-	expression tag	UNP P00519

Continued on next page...

Continued from previous page...

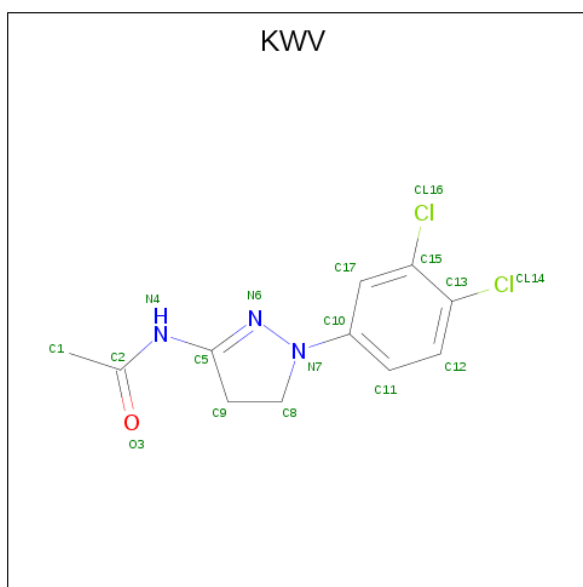
Chain	Residue	Modelled	Actual	Comment	Reference
B	245	PHE	-	expression tag	UNP P00519
B	246	GLN	-	expression tag	UNP P00519
B	247	GLY	-	expression tag	UNP P00519

- Molecule 2 is 4-(4-METHYL-PIPERAZIN-1-YLMETHYL)-N-[4-METHYL-3-(4-PYRIDIN-3-YL-PYRIMIDIN-2-YLAMINO)-PHENYL]-BENZAMIDE (three-letter code: STI) (formula: C₂₉H₃₁N₇O).



Mol	Chain	Residues	Atoms				ZeroOcc	AltConf
2	A	1	Total	C	N	O	0	0
			37	29	7	1		
2	B	1	Total	C	N	O	0	0
			37	29	7	1		

- Molecule 3 is {N}-[2-(3,4-dichlorophenyl)-3,4-dihydropyrazol-5-yl]ethanamide (three-letter code: KWV) (formula: C₁₁H₁₁Cl₂N₃O).



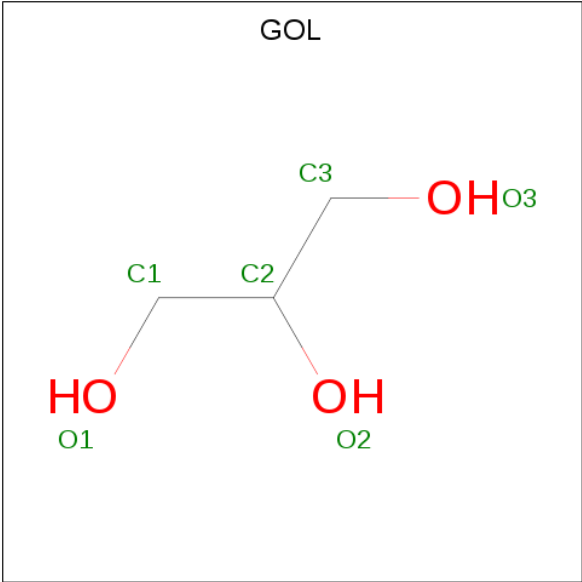
Mol	Chain	Residues	Atoms					ZeroOcc	AltConf
3	A	1	Total	C	Cl	N	O	0	0
			17	11	2	3	1		
3	B	1	Total	C	Cl	N	O	0	0
			17	11	2	3	1		

- Molecule 4 is SULFATE ION (three-letter code: SO4) (formula: O₄S).



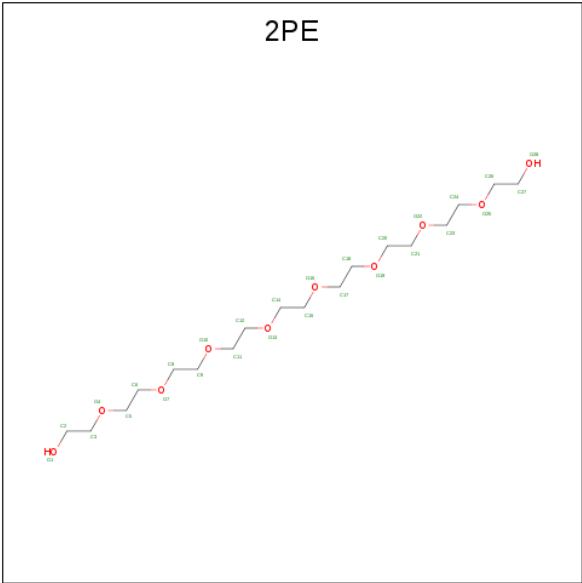
Mol	Chain	Residues	Atoms			ZeroOcc	AltConf
4	B	1	Total	O	S	0	0
			5	4	1		

- Molecule 5 is GLYCEROL (three-letter code: GOL) (formula: C₃H₈O₃).



Mol	Chain	Residues	Atoms			ZeroOcc	AltConf
5	B	1	Total	C	O	0	0
			6	3	3		
5	B	1	Total	C	O	0	0
			6	3	3		

- Molecule 6 is NONAETHYLENE GLYCOL (three-letter code: 2PE) (formula: C₁₈H₃₈O₁₀).



Mol	Chain	Residues	Atoms			ZeroOcc	AltConf
6	B	1	Total	C	O	0	0
			28	18	10		

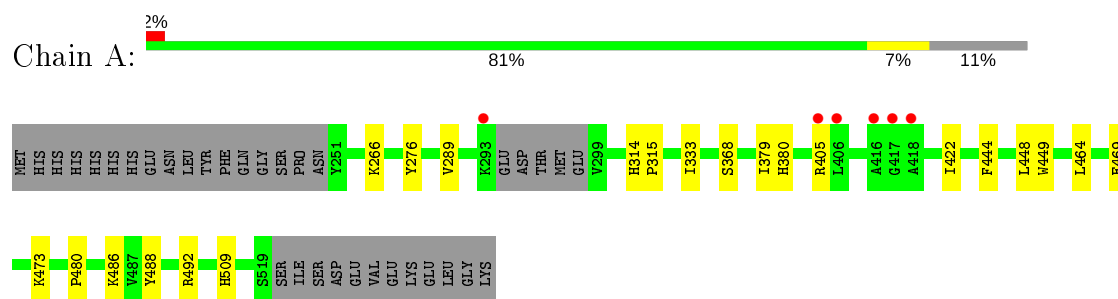
- Molecule 7 is water.

Mol	Chain	Residues	Atoms		ZeroOcc	AltConf
7	A	42	Total 42	O 42	0	0
7	B	30	Total 30	O 30	0	0

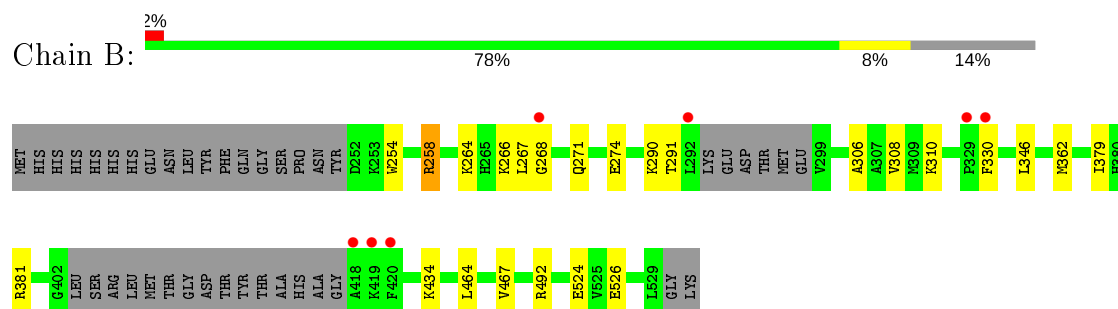
3 Residue-property plots

These plots are drawn for all protein, RNA, DNA and oligosaccharide chains in the entry. The first graphic for a chain summarises the proportions of the various outlier classes displayed in the second graphic. The second graphic shows the sequence view annotated by issues in geometry and electron density. Residues are color-coded according to the number of geometric quality criteria for which they contain at least one outlier: green = 0, yellow = 1, orange = 2 and red = 3 or more. A red dot above a residue indicates a poor fit to the electron density ($RSRZ > 2$). Stretches of 2 or more consecutive residues without any outlier are shown as a green connector. Residues present in the sample, but not in the model, are shown in grey.

• Molecule 1: Tyrosine-protein kinase ABL1



• Molecule 1: Tyrosine-protein kinase ABL1



4 Data and refinement statistics

Property	Value	Source
Space group	P 21 21 21	Depositor
Cell constants a, b, c, α , β , γ	75.09Å 95.64Å 115.53Å 90.00° 90.00° 90.00°	Depositor
Resolution (Å)	73.70 – 2.33 73.67 – 2.33	Depositor EDS
% Data completeness (in resolution range)	95.9 (73.70-2.33) 89.8 (73.67-2.33)	Depositor EDS
R_{merge}	(Not available)	Depositor
R_{sym}	(Not available)	Depositor
$\langle I/\sigma(I) \rangle$ ¹	2.14 (at 2.32Å)	Xtriage
Refinement program	PHENIX 1.14 _3260	Depositor
R, R_{free}	0.193 , 0.234 0.193 , 0.234	Depositor DCC
R_{free} test set	1780 reflections (5.09%)	wwPDB-VP
Wilson B-factor (Å ²)	26.8	Xtriage
Anisotropy	0.289	Xtriage
Bulk solvent k_{sol} (e/Å ³), B_{sol} (Å ²)	0.37 , 40.8	EDS
L-test for twinning ²	$\langle L \rangle = 0.49$, $\langle L^2 \rangle = 0.32$	Xtriage
Estimated twinning fraction	No twinning to report.	Xtriage
F_o, F_c correlation	0.94	EDS
Total number of atoms	4456	wwPDB-VP
Average B, all atoms (Å ²)	34.0	wwPDB-VP

Xtriage's analysis on translational NCS is as follows: *The largest off-origin peak in the Patterson function is 5.88% of the height of the origin peak. No significant pseudotranslation is detected.*

¹Intensities estimated from amplitudes.

²Theoretical values of $\langle |L| \rangle$, $\langle L^2 \rangle$ for acentric reflections are 0.5, 0.333 respectively for untwinned datasets, and 0.375, 0.2 for perfectly twinned datasets.

5 Model quality [i](#)

5.1 Standard geometry [i](#)

Bond lengths and bond angles in the following residue types are not validated in this section: GOL, KWV, 2PE, STI, SO4

The Z score for a bond length (or angle) is the number of standard deviations the observed value is removed from the expected value. A bond length (or angle) with $|Z| > 5$ is considered an outlier worth inspection. RMSZ is the root-mean-square of all Z scores of the bond lengths (or angles).

Mol	Chain	Bond lengths		Bond angles	
		RMSZ	# Z >5	RMSZ	# Z >5
1	A	0.46	0/2190	0.57	0/2964
1	B	0.44	0/2148	0.57	0/2905
All	All	0.45	0/4338	0.57	0/5869

There are no bond length outliers.

There are no bond angle outliers.

There are no chirality outliers.

There are no planarity outliers.

5.2 Too-close contacts [i](#)

In the following table, the Non-H and H(model) columns list the number of non-hydrogen atoms and hydrogen atoms in the chain respectively. The H(added) column lists the number of hydrogen atoms added and optimized by MolProbity. The Clashes column lists the number of clashes within the asymmetric unit, whereas Symm-Clashes lists symmetry related clashes.

Mol	Chain	Non-H	H(model)	H(added)	Clashes	Symm-Clashes
1	A	2135	0	2082	15	0
1	B	2096	0	2048	21	0
2	A	37	0	31	2	0
2	B	37	0	31	2	0
3	A	17	0	0	0	0
3	B	17	0	0	3	0
4	B	5	0	0	0	0
5	B	12	0	16	2	0
6	B	28	0	38	7	0
7	A	42	0	0	0	0
7	B	30	0	0	1	0
All	All	4456	0	4246	40	0

The all-atom clashscore is defined as the number of clashes found per 1000 atoms (including hydrogen atoms). The all-atom clashscore for this structure is 5.

The worst 5 of 40 close contacts within the same asymmetric unit are listed below, sorted by their clash magnitude.

Atom-1	Atom-2	Interatomic distance (Å)	Clash overlap (Å)
3:B:605:KWV:N7	3:B:605:KWV:N6	1.60	1.10
1:B:434:LYS:HZ1	6:B:606:2PE:H172	1.34	0.93
1:A:289:VAL:HG13	1:A:333:ILE:HD13	1.67	0.77
1:B:526:GLU:OE2	7:B:701:HOH:O	2.07	0.72
1:B:434:LYS:HZ3	6:B:606:2PE:H61	1.53	0.71

There are no symmetry-related clashes.

5.3 Torsion angles [i](#)

5.3.1 Protein backbone [i](#)

In the following table, the Percentiles column shows the percent Ramachandran outliers of the chain as a percentile score with respect to all X-ray entries followed by that with respect to entries of similar resolution.

The Analysed column shows the number of residues for which the backbone conformation was analysed, and the total number of residues.

Mol	Chain	Analysed	Favoured	Allowed	Outliers	Percentiles	
1	A	260/298 (87%)	250 (96%)	10 (4%)	0	100	100
1	B	251/298 (84%)	241 (96%)	9 (4%)	1 (0%)	34	38
All	All	511/596 (86%)	491 (96%)	19 (4%)	1 (0%)	47	55

All (1) Ramachandran outliers are listed below:

Mol	Chain	Res	Type
1	B	264	LYS

5.3.2 Protein sidechains [i](#)

In the following table, the Percentiles column shows the percent sidechain outliers of the chain as a percentile score with respect to all X-ray entries followed by that with respect to entries of similar resolution.

The Analysed column shows the number of residues for which the sidechain conformation was

analysed, and the total number of residues.

Mol	Chain	Analysed	Rotameric	Outliers	Percentiles	
1	A	225/262 (86%)	224 (100%)	1 (0%)	91	95
1	B	225/262 (86%)	223 (99%)	2 (1%)	78	87
All	All	450/524 (86%)	447 (99%)	3 (1%)	84	90

All (3) residues with a non-rotameric sidechain are listed below:

Mol	Chain	Res	Type
1	A	405	ARG
1	B	258	ARG
1	B	524	GLU

Some sidechains can be flipped to improve hydrogen bonding and reduce clashes. There are no such sidechains identified.

5.3.3 RNA ⓘ

There are no RNA molecules in this entry.

5.4 Non-standard residues in protein, DNA, RNA chains ⓘ

There are no non-standard protein/DNA/RNA residues in this entry.

5.5 Carbohydrates ⓘ

There are no monosaccharides in this entry.

5.6 Ligand geometry ⓘ

8 ligands are modelled in this entry.

In the following table, the Counts columns list the number of bonds (or angles) for which Mogul statistics could be retrieved, the number of bonds (or angles) that are observed in the model and the number of bonds (or angles) that are defined in the Chemical Component Dictionary. The Link column lists molecule types, if any, to which the group is linked. The Z score for a bond length (or angle) is the number of standard deviations the observed value is removed from the expected value. A bond length (or angle) with $|Z| > 2$ is considered an outlier worth inspection. RMSZ is the root-mean-square of all Z scores of the bond lengths (or angles).

Mol	Type	Chain	Res	Link	Bond lengths			Bond angles		
					Counts	RMSZ	# Z > 2	Counts	RMSZ	# Z > 2
3	KWV	B	605	-	17,18,18	4.46	7 (41%)	18,25,25	2.42	4 (22%)
6	2PE	B	606	-	27,27,27	0.53	0	26,26,26	0.68	0
3	KWV	A	602	-	17,18,18	4.39	6 (35%)	18,25,25	2.26	4 (22%)
2	STI	A	601	-	41,41,41	2.88	17 (41%)	56,56,56	2.16	17 (30%)
5	GOL	B	603	-	5,5,5	0.70	0	5,5,5	1.21	1 (20%)
5	GOL	B	604	-	5,5,5	1.52	2 (40%)	5,5,5	0.67	0
4	SO4	B	601	-	4,4,4	0.15	0	6,6,6	0.17	0
2	STI	B	602	-	41,41,41	2.95	16 (39%)	56,56,56	2.06	13 (23%)

In the following table, the Chirals column lists the number of chiral outliers, the number of chiral centers analysed, the number of these observed in the model and the number defined in the Chemical Component Dictionary. Similar counts are reported in the Torsion and Rings columns. '-' means no outliers of that kind were identified.

Mol	Type	Chain	Res	Link	Chirals	Torsions	Rings
3	KWV	B	605	-	-	0/7/17/17	0/2/2/2
6	2PE	B	606	-	-	17/25/25/25	-
3	KWV	A	602	-	-	0/7/17/17	0/2/2/2
2	STI	A	601	-	-	2/20/30/30	0/5/5/5
5	GOL	B	603	-	-	4/4/4/4	-
5	GOL	B	604	-	-	0/4/4/4	-
2	STI	B	602	-	-	1/20/30/30	0/5/5/5

The worst 5 of 48 bond length outliers are listed below:

Mol	Chain	Res	Type	Atoms	Z	Observed(Å)	Ideal(Å)
3	B	605	KWV	N7-N6	11.92	1.60	1.36
3	A	602	KWV	N7-N6	11.64	1.60	1.36
2	B	602	STI	C46-N48	-10.15	1.27	1.47
2	A	601	STI	C46-N48	-9.73	1.28	1.47
3	A	602	KWV	C8-N7	-9.10	1.34	1.47

The worst 5 of 39 bond angle outliers are listed below:

Mol	Chain	Res	Type	Atoms	Z	Observed(°)	Ideal(°)
3	A	602	KWV	C9-C8-N7	7.36	106.43	102.24
2	B	602	STI	C7-N8-C9	6.58	122.11	116.69
3	B	605	KWV	C17-C10-N7	-6.34	115.60	120.27
3	B	605	KWV	C9-C8-N7	6.28	105.82	102.24
2	B	602	STI	C11-N10-C9	5.70	120.50	115.45

There are no chirality outliers.

5 of 24 torsion outliers are listed below:

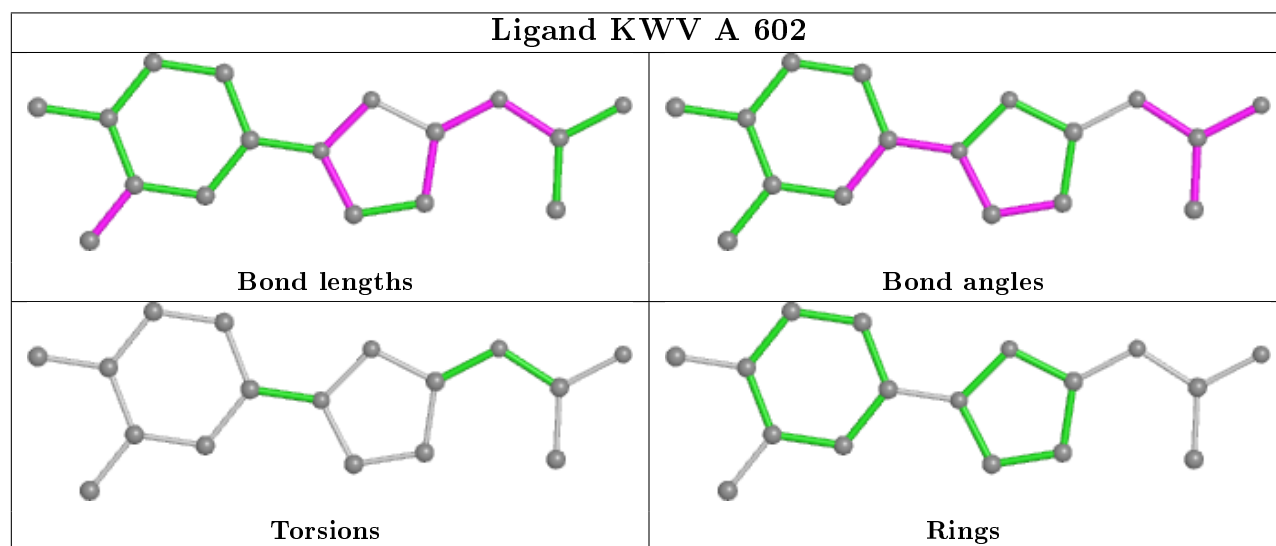
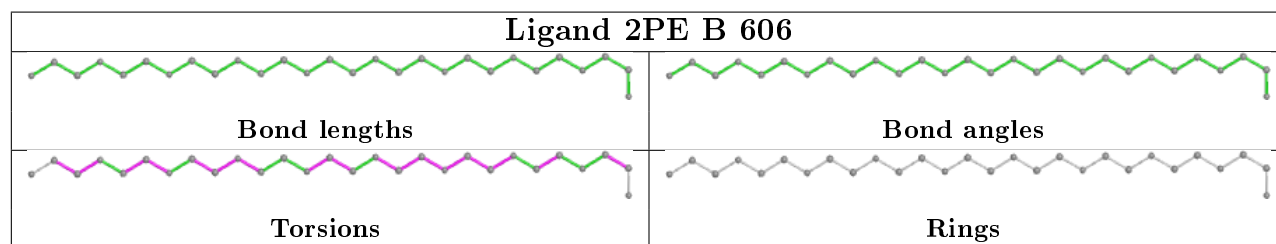
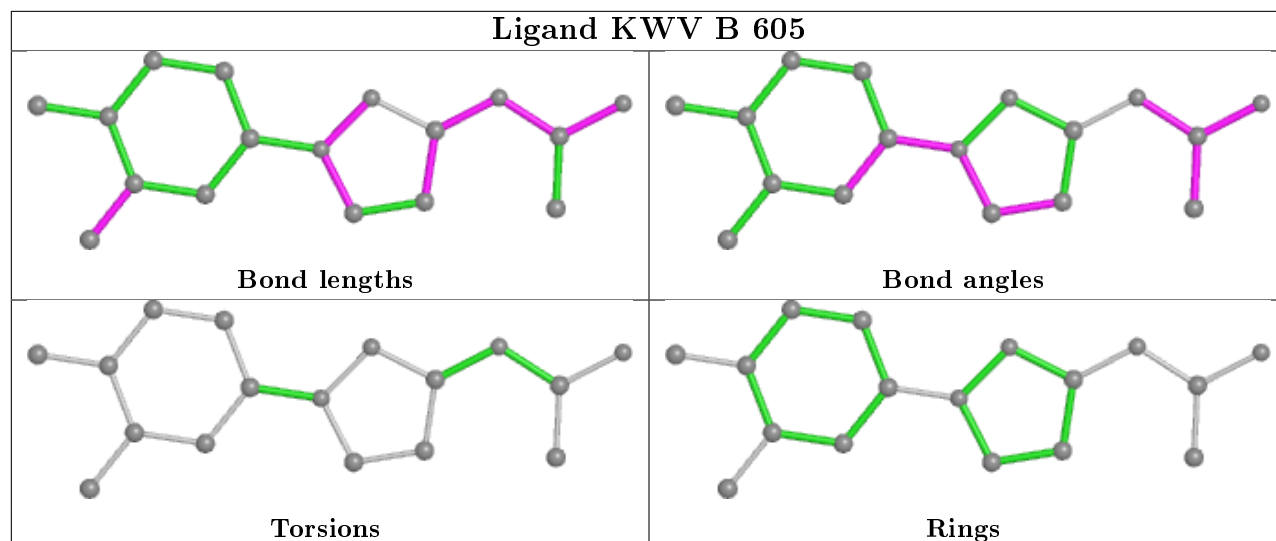
Mol	Chain	Res	Type	Atoms
2	A	601	STI	C15-C14-N13-C9
2	B	602	STI	C15-C14-N13-C9
6	B	606	2PE	C14-C15-O16-C17
6	B	606	2PE	C21-C20-O19-C18
6	B	606	2PE	O4-C5-C6-O7

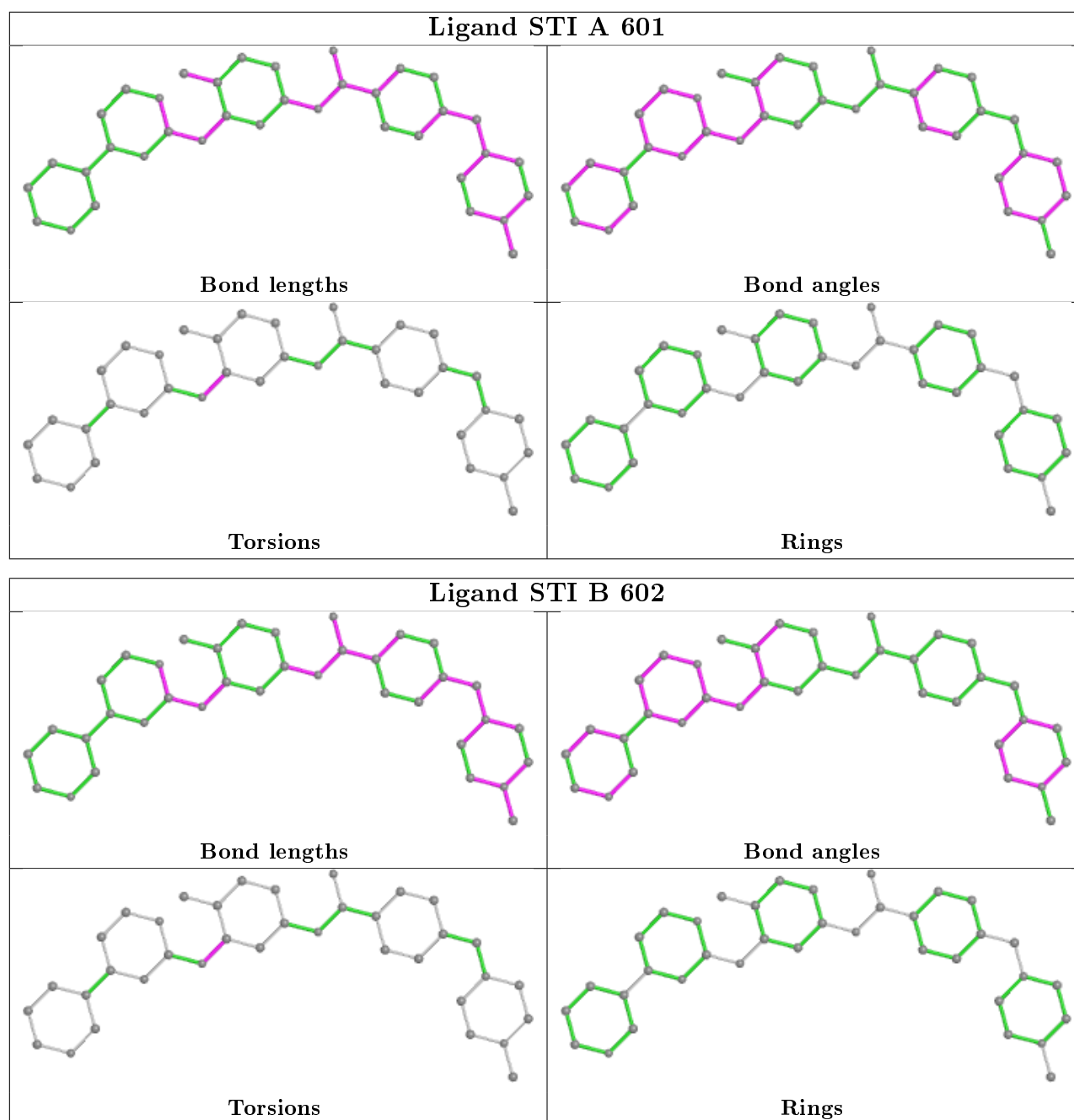
There are no ring outliers.

5 monomers are involved in 16 short contacts:

Mol	Chain	Res	Type	Clashes	Symm-Clashes
3	B	605	KWV	3	0
6	B	606	2PE	7	0
2	A	601	STI	2	0
5	B	603	GOL	2	0
2	B	602	STI	2	0

The following is a two-dimensional graphical depiction of Mogul quality analysis of bond lengths, bond angles, torsion angles, and ring geometry for all instances of the Ligand of Interest. In addition, ligands with molecular weight > 250 and outliers as shown on the validation Tables will also be included. For torsion angles, if less than 5% of the Mogul distribution of torsion angles is within 10 degrees of the torsion angle in question, then that torsion angle is considered an outlier. Any bond that is central to one or more torsion angles identified as an outlier by Mogul will be highlighted in the graph. For rings, the root-mean-square deviation (RMSD) between the ring in question and similar rings identified by Mogul is calculated over all ring torsion angles. If the average RMSD is greater than 60 degrees and the minimal RMSD between the ring in question and any Mogul-identified rings is also greater than 60 degrees, then that ring is considered an outlier. The outliers are highlighted in purple. The color gray indicates Mogul did not find sufficient equivalents in the CSD to analyse the geometry.





5.7 Other polymers [i](#)

There are no such residues in this entry.

5.8 Polymer linkage issues [i](#)

There are no chain breaks in this entry.

6 Fit of model and data [i](#)

6.1 Protein, DNA and RNA chains [i](#)

In the following table, the column labelled ‘#RSRZ> 2’ contains the number (and percentage) of RSRZ outliers, followed by percent RSRZ outliers for the chain as percentile scores relative to all X-ray entries and entries of similar resolution. The OWAB column contains the minimum, median, 95th percentile and maximum values of the occupancy-weighted average B-factor per residue. The column labelled ‘Q< 0.9’ lists the number of (and percentage) of residues with an average occupancy less than 0.9.

Mol	Chain	Analysed	<RSRZ>	#RSRZ>2	OWAB(Å ²)	Q<0.9
1	A	264/298 (88%)	0.11	6 (2%) 60 69	19, 29, 54, 72	0
1	B	257/298 (86%)	0.24	7 (2%) 54 64	20, 31, 70, 88	0
All	All	521/596 (87%)	0.17	13 (2%) 57 66	19, 30, 64, 88	0

The worst 5 of 13 RSRZ outliers are listed below:

Mol	Chain	Res	Type	RSRZ
1	B	420	PHE	6.9
1	B	418	ALA	5.1
1	A	418	ALA	3.7
1	B	419	LYS	3.6
1	A	417	GLY	3.3

6.2 Non-standard residues in protein, DNA, RNA chains [i](#)

There are no non-standard protein/DNA/RNA residues in this entry.

6.3 Carbohydrates [i](#)

There are no monosaccharides in this entry.

6.4 Ligands [i](#)

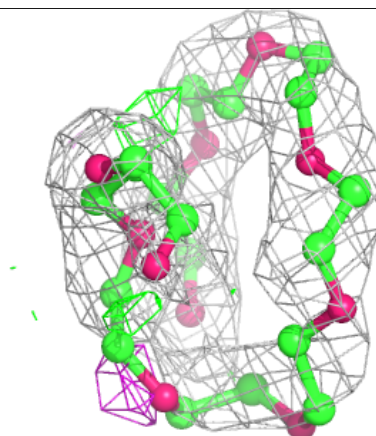
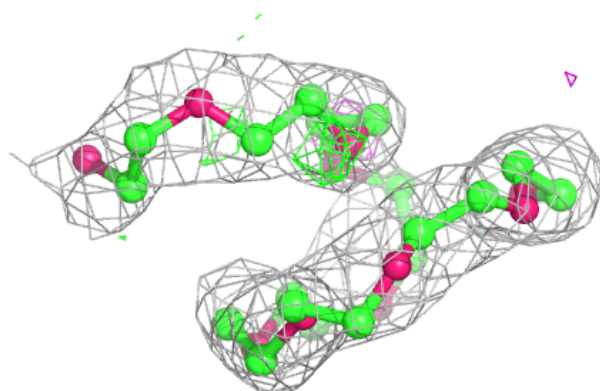
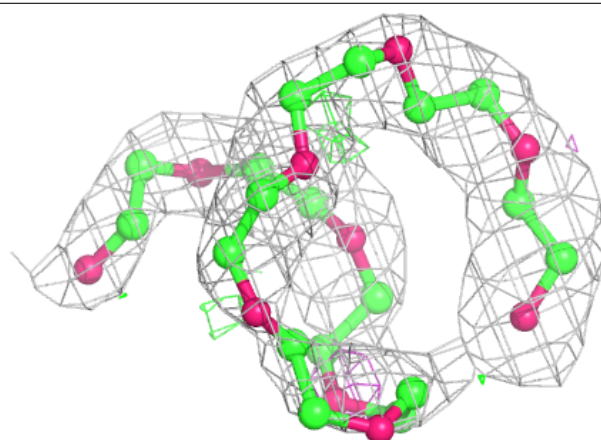
In the following table, the Atoms column lists the number of modelled atoms in the group and the number defined in the chemical component dictionary. The B-factors column lists the minimum, median, 95th percentile and maximum values of B factors of atoms in the group. The column labelled ‘Q< 0.9’ lists the number of atoms with occupancy less than 0.9.

Mol	Type	Chain	Res	Atoms	RSCC	RSR	B-factors(\AA^2)	Q<0.9
6	2PE	B	606	28/28	0.86	0.24	39,52,66,73	0
4	SO4	B	601	5/5	0.90	0.20	67,68,83,87	0
5	GOL	B	604	6/6	0.92	0.23	30,34,43,43	0
5	GOL	B	603	6/6	0.92	0.16	23,37,41,41	0
3	KWV	B	605	17/17	0.95	0.14	22,26,32,42	0
3	KWV	A	602	17/17	0.96	0.13	19,24,35,38	0
2	STI	A	601	37/37	0.97	0.15	19,24,34,37	0
2	STI	B	602	37/37	0.97	0.15	30,36,41,42	0

The following is a graphical depiction of the model fit to experimental electron density of all instances of the Ligand of Interest. In addition, ligands with molecular weight > 250 and outliers as shown on the geometry validation Tables will also be included. Each fit is shown from different orientation to approximate a three-dimensional view.

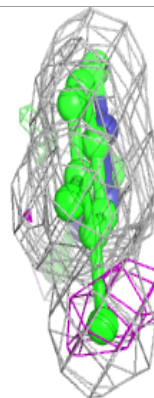
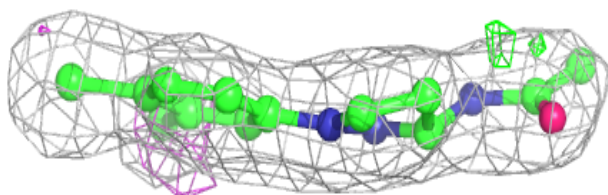
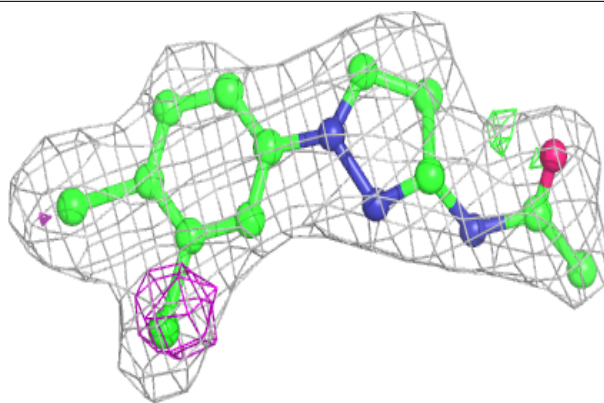
Electron density around 2PE B 606:

2mF_o-DF_c (at 0.7 rmsd) in gray
mF_o-DF_c (at 3 rmsd) in purple (negative)
and green (positive)

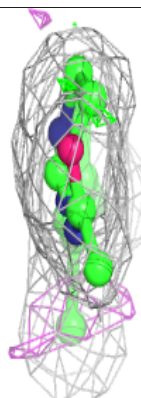
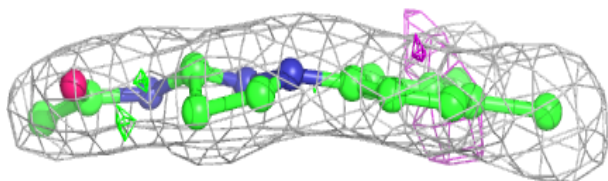
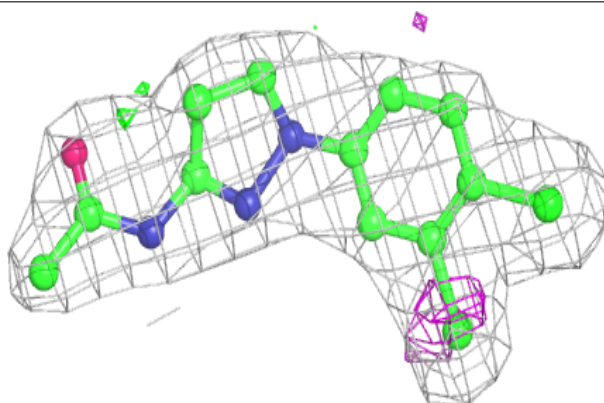


Electron density around KWV B 605:

$2mF_o-DF_c$ (at 0.7 rmsd) in gray
 mF_o-DF_c (at 3 rmsd) in purple (negative)
and green (positive)

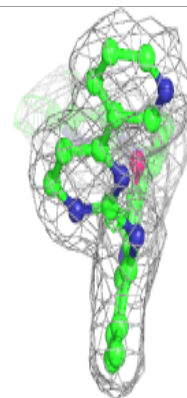
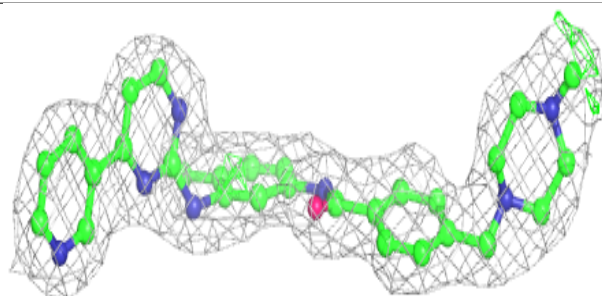
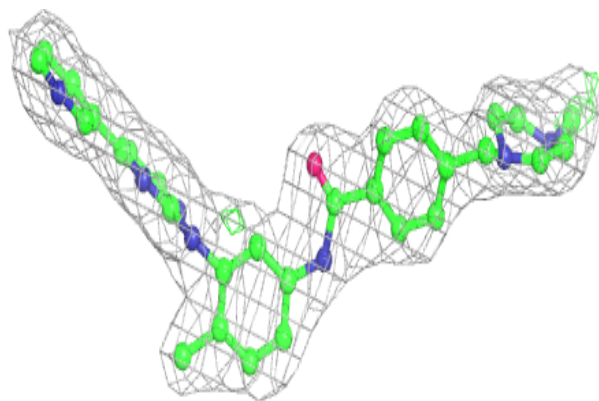
**Electron density around KWV A 602:**

$2mF_o-DF_c$ (at 0.7 rmsd) in gray
 mF_o-DF_c (at 3 rmsd) in purple (negative)
and green (positive)

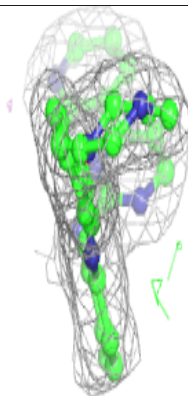
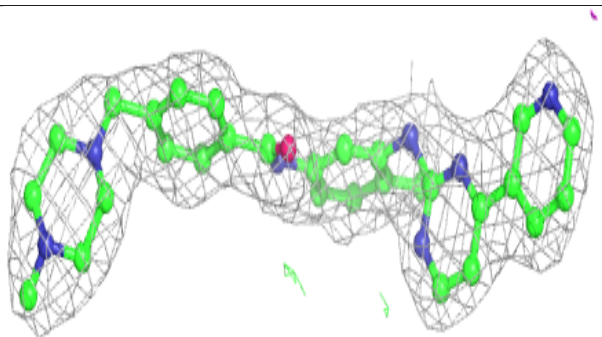
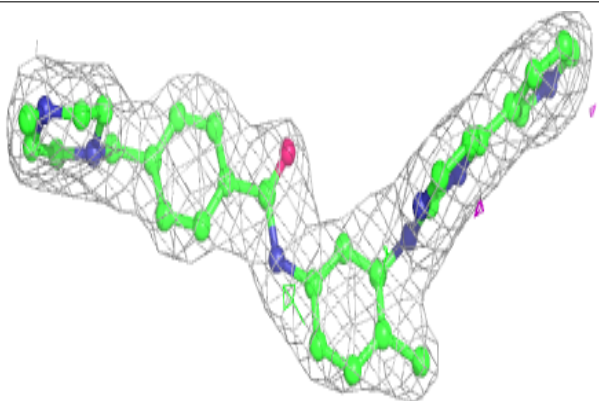


Electron density around STI A 601:

$2mF_o-DF_c$ (at 0.7 rmsd) in gray
 mF_o-DF_c (at 3 rmsd) in purple (negative)
and green (positive)

**Electron density around STI B 602:**

$2mF_o-DF_c$ (at 0.7 rmsd) in gray
 mF_o-DF_c (at 3 rmsd) in purple (negative)
and green (positive)



6.5 Other polymers [i](#)

There are no such residues in this entry.