



# Full wwPDB X-ray Structure Validation Report ⓘ

Oct 16, 2021 – 09:50 PM EDT

PDB ID : 1NQA  
Title : Glyceraldehyde-3-Phosphate Dehydrogenase Mutant With Cys 149 Replaced By Ala Complexed With Nad<sup>+</sup> and D-Glyceraldehyde-3-Phosphate  
Authors : Didierjean, C.; Corbier, C.; Fatih, M.; Favier, F.; Boschi-Muller, S.; Branlant, G.; Aubry, A.  
Deposited on : 2003-01-21  
Resolution : 2.20 Å(reported)

This is a Full wwPDB X-ray Structure Validation Report for a publicly released PDB entry.

We welcome your comments at [validation@mail.wwpdb.org](mailto:validation@mail.wwpdb.org)

A user guide is available at

<https://www.wwpdb.org/validation/2017/XrayValidationReportHelp>

with specific help available everywhere you see the ⓘ symbol.

---

The following versions of software and data (see [references ⓘ](#)) were used in the production of this report:

MolProbity : 4.02b-467  
Mogul : 1.8.5 (274361), CSD as541be (2020)  
Xtriage (Phenix) : 1.13  
EDS : 2.23.2  
buster-report : 1.1.7 (2018)  
Percentile statistics : 20191225.v01 (using entries in the PDB archive December 25th 2019)  
Refmac : 5.8.0158  
CCP4 : 7.0.044 (Gargrove)  
Ideal geometry (proteins) : Engh & Huber (2001)  
Ideal geometry (DNA, RNA) : Parkinson et al. (1996)  
Validation Pipeline (wwPDB-VP) : 2.23.2

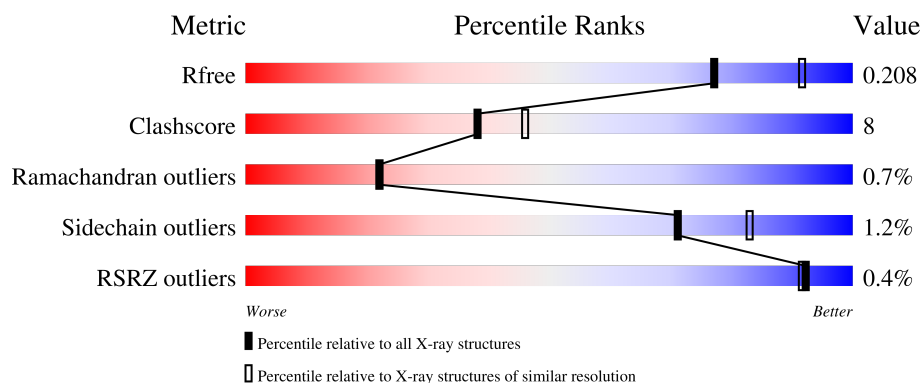
# 1 Overall quality at a glance

The following experimental techniques were used to determine the structure:

*X-RAY DIFFRACTION*

The reported resolution of this entry is 2.20 Å.

Percentile scores (ranging between 0-100) for global validation metrics of the entry are shown in the following graphic. The table shows the number of entries on which the scores are based.



Metric	Whole archive (#Entries)	Similar resolution (#Entries, resolution range(Å))
$R_{free}$	130704	4898 (2.20-2.20)
Clashscore	141614	5594 (2.20-2.20)
Ramachandran outliers	138981	5503 (2.20-2.20)
Sidechain outliers	138945	5504 (2.20-2.20)
RSRZ outliers	127900	4800 (2.20-2.20)

The table below summarises the geometric issues observed across the polymeric chains and their fit to the electron density. The red, orange, yellow and green segments of the lower bar indicate the fraction of residues that contain outliers for  $\geq 3$ , 2, 1 and 0 types of geometric quality criteria respectively. A grey segment represents the fraction of residues that are not modelled. The numeric value for each fraction is indicated below the corresponding segment, with a dot representing fractions  $\leq 5\%$ . The upper red bar (where present) indicates the fraction of residues that have poor fit to the electron density. The numeric value is given above the bar.

Mol	Chain	Length	Quality of chain
1	O	334	<div> <div style="width: 100%; height: 10px; background-color: red;"></div> <div style="display: flex; justify-content: space-between; align-items: center;"> <span>%</span> <div style="width: 79%; height: 10px; background-color: green;"></div> <div style="width: 19%; height: 10px; background-color: yellow;"></div> <span>.</span> </div> <div style="display: flex; justify-content: space-between; align-items: center;"> <span>79%</span> <span>19%</span> </div> </div>
1	P	334	<div style="display: flex; justify-content: space-between; align-items: center;"> <div style="width: 84%; height: 10px; background-color: green;"></div> <div style="width: 15%; height: 10px; background-color: yellow;"></div> <span>.</span> </div> <div style="display: flex; justify-content: space-between; align-items: center;"> <span>84%</span> <span>15%</span> </div>
1	Q	334	<div> <div style="width: 100%; height: 10px; background-color: red;"></div> <div style="display: flex; justify-content: space-between; align-items: center;"> <span>%</span> <div style="width: 83%; height: 10px; background-color: green;"></div> <div style="width: 16%; height: 10px; background-color: yellow;"></div> <span>.</span> </div> <div style="display: flex; justify-content: space-between; align-items: center;"> <span>83%</span> <span>16%</span> </div> </div>
1	R	334	<div style="display: flex; justify-content: space-between; align-items: center;"> <div style="width: 82%; height: 10px; background-color: green;"></div> <div style="width: 17%; height: 10px; background-color: yellow;"></div> <span>.</span> </div> <div style="display: flex; justify-content: space-between; align-items: center;"> <span>82%</span> <span>17%</span> </div>

## 2 Entry composition

There are 4 unique types of molecules in this entry. The entry contains 11045 atoms, of which 0 are hydrogens and 0 are deuteriums.

In the tables below, the ZeroOcc column contains the number of atoms modelled with zero occupancy, the AltConf column contains the number of residues with at least one atom in alternate conformation and the Trace column contains the number of residues modelled with at most 2 atoms.

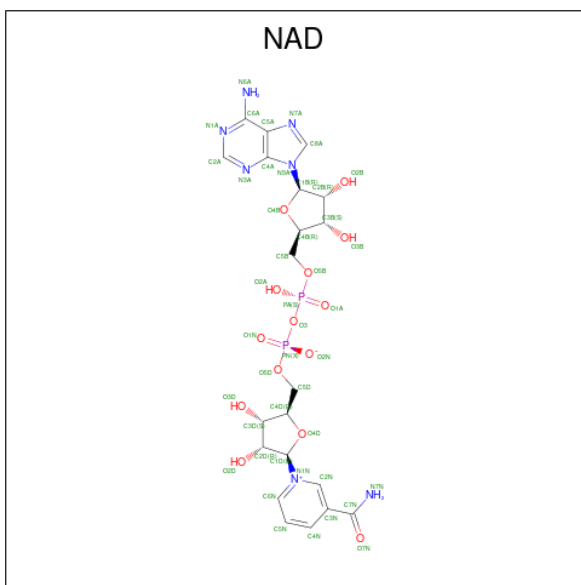
- Molecule 1 is a protein called Glyceraldehyde 3-phosphate dehydrogenase.

Mol	Chain	Residues	Atoms					ZeroOcc	AltConf	Trace
1	O	334	Total	C	N	O	S	0	0	0
			2524	1582	445	489	8			
1	P	334	Total	C	N	O	S	0	0	0
			2524	1582	445	489	8			
1	Q	334	Total	C	N	O	S	0	0	0
			2524	1582	445	489	8			
1	R	334	Total	C	N	O	S	0	0	0
			2524	1582	445	489	8			

There are 4 discrepancies between the modelled and reference sequences:

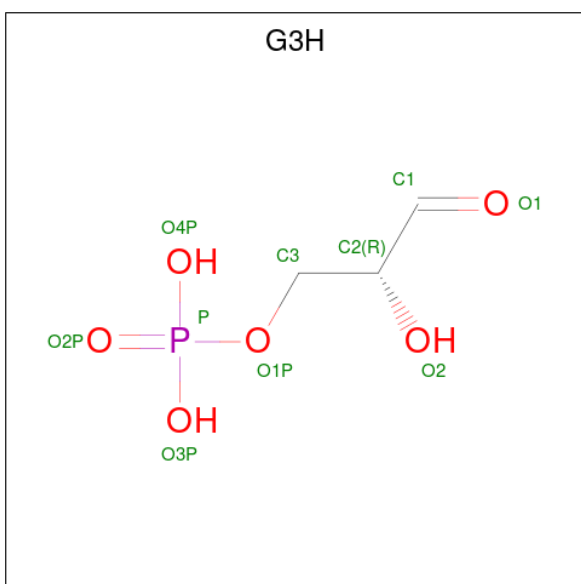
Chain	Residue	Modelled	Actual	Comment	Reference
O	149	ALA	CYS	engineered mutation	UNP P00362
P	149	ALA	CYS	engineered mutation	UNP P00362
Q	149	ALA	CYS	engineered mutation	UNP P00362
R	149	ALA	CYS	engineered mutation	UNP P00362

- Molecule 2 is NICOTINAMIDE-ADENINE-DINUCLEOTIDE (three-letter code: NAD) (formula: C<sub>21</sub>H<sub>27</sub>N<sub>7</sub>O<sub>14</sub>P<sub>2</sub>).



Mol	Chain	Residues	Atoms					ZeroOcc	AltConf
2	O	1	Total 44	C 21	N 7	O 14	P 2	0	0
2	P	1	Total 44	C 21	N 7	O 14	P 2	0	0
2	Q	1	Total 44	C 21	N 7	O 14	P 2	0	0
2	R	1	Total 44	C 21	N 7	O 14	P 2	0	0

- Molecule 3 is GLYCERALDEHYDE-3-PHOSPHATE (three-letter code: G3H) (formula:  $\text{C}_3\text{H}_7\text{O}_6\text{P}$ ).



Mol	Chain	Residues	Atoms				ZeroOcc	AltConf
3	O	1	Total	C	O	P	0	0
			10	3	6	1		
3	P	1	Total	C	O	P	0	0
			10	3	6	1		
3	Q	1	Total	C	O	P	0	0
			10	3	6	1		
3	R	1	Total	C	O	P	0	0
			10	3	6	1		

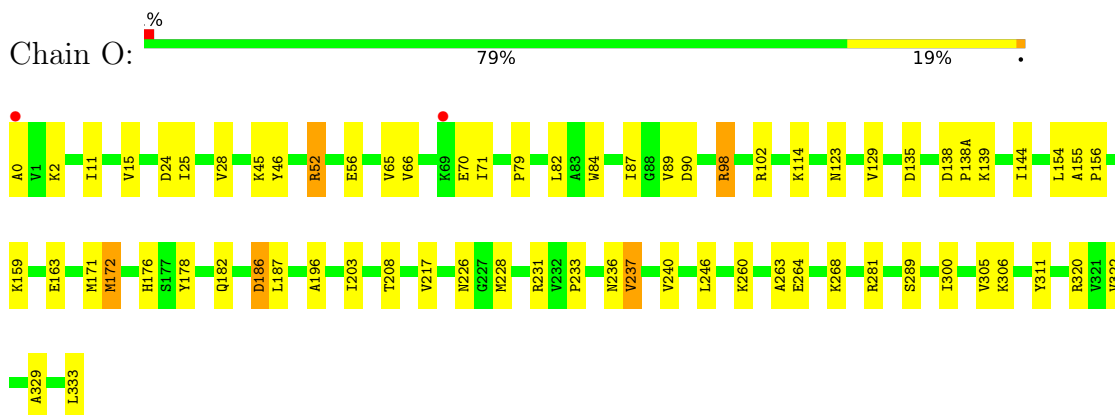
- Molecule 4 is water.

Mol	Chain	Residues	Atoms		ZeroOcc	AltConf
4	O	143	Total	O	0	0
			143	143		
4	P	199	Total	O	0	0
			199	199		
4	Q	184	Total	O	0	0
			184	184		
4	R	207	Total	O	0	0
			207	207		

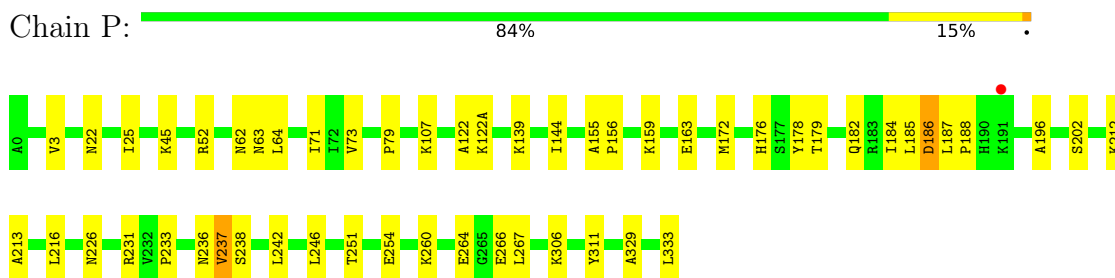
### 3 Residue-property plots [i](#)

These plots are drawn for all protein, RNA, DNA and oligosaccharide chains in the entry. The first graphic for a chain summarises the proportions of the various outlier classes displayed in the second graphic. The second graphic shows the sequence view annotated by issues in geometry and electron density. Residues are color-coded according to the number of geometric quality criteria for which they contain at least one outlier: green = 0, yellow = 1, orange = 2 and red = 3 or more. A red dot above a residue indicates a poor fit to the electron density ( $RSRZ > 2$ ). Stretches of 2 or more consecutive residues without any outlier are shown as a green connector. Residues present in the sample, but not in the model, are shown in grey.

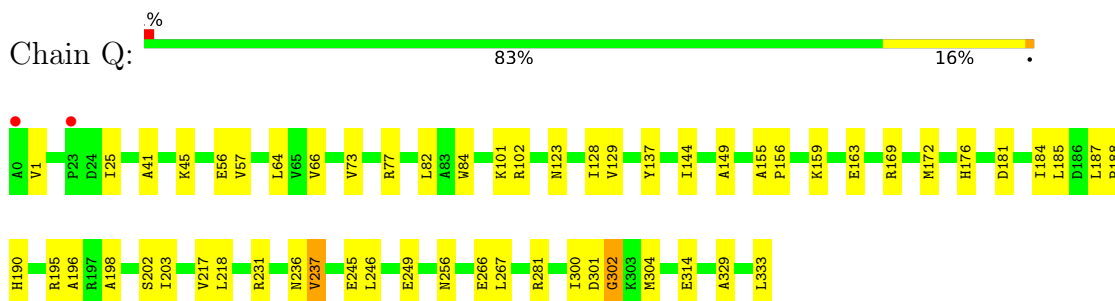
- Molecule 1: Glyceraldehyde 3-phosphate dehydrogenase



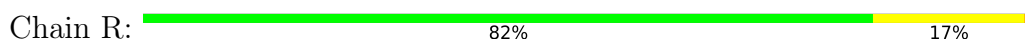
- Molecule 1: Glyceraldehyde 3-phosphate dehydrogenase

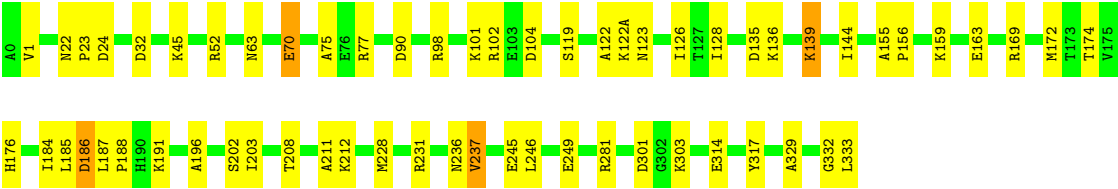


- Molecule 1: Glyceraldehyde 3-phosphate dehydrogenase



- Molecule 1: Glyceraldehyde 3-phosphate dehydrogenase





## 4 Data and refinement statistics

Property	Value	Source
Space group	P 31 2 1	Depositor
Cell constants a, b, c, $\alpha$ , $\beta$ , $\gamma$	115.60Å 115.60Å 223.90Å 90.00° 90.00° 120.00°	Depositor
Resolution (Å)	8.00 – 2.20 16.64 – 2.18	Depositor EDS
% Data completeness (in resolution range)	(Not available) (8.00-2.20) 95.7 (16.64-2.18)	Depositor EDS
$R_{merge}$	0.07	Depositor
$R_{sym}$	(Not available)	Depositor
$\langle I/\sigma(I) \rangle$ <sup>1</sup>	3.05 (at 2.18Å)	Xtriage
Refinement program	CNS	Depositor
R, $R_{free}$	0.180 , 0.214 0.173 , 0.208	Depositor DCC
$R_{free}$ test set	8705 reflections (10.04%)	wwPDB-VP
Wilson B-factor (Å <sup>2</sup> )	21.4	Xtriage
Anisotropy	0.184	Xtriage
Bulk solvent $k_{sol}$ (e/Å <sup>3</sup> ), $B_{sol}$ (Å <sup>2</sup> )	0.40 , 63.0	EDS
L-test for twinning <sup>2</sup>	$\langle  L  \rangle = 0.50$ , $\langle L^2 \rangle = 0.33$	Xtriage
Estimated twinning fraction	0.019 for -h,-k,l	Xtriage
$F_o, F_c$ correlation	0.95	EDS
Total number of atoms	11045	wwPDB-VP
Average B, all atoms (Å <sup>2</sup> )	23.0	wwPDB-VP

Xtriage's analysis on translational NCS is as follows: *The largest off-origin peak in the Patterson function is 3.40% of the height of the origin peak. No significant pseudotranslation is detected.*

<sup>1</sup>Intensities estimated from amplitudes.

<sup>2</sup>Theoretical values of  $\langle |L| \rangle$ ,  $\langle L^2 \rangle$  for acentric reflections are 0.5, 0.333 respectively for untwinned datasets, and 0.375, 0.2 for perfectly twinned datasets.

## 5 Model quality [i](#)

### 5.1 Standard geometry [i](#)

Bond lengths and bond angles in the following residue types are not validated in this section: NAD, G3H

The Z score for a bond length (or angle) is the number of standard deviations the observed value is removed from the expected value. A bond length (or angle) with  $|Z| > 5$  is considered an outlier worth inspection. RMSZ is the root-mean-square of all Z scores of the bond lengths (or angles).

Mol	Chain	Bond lengths		Bond angles	
		RMSZ	$\# Z  > 5$	RMSZ	$\# Z  > 5$
1	O	0.28	0/2560	0.59	1/3473 (0.0%)
1	P	0.30	0/2560	0.61	0/3473
1	Q	0.29	0/2560	0.62	1/3473 (0.0%)
1	R	0.30	0/2560	0.62	1/3473 (0.0%)
All	All	0.29	0/10240	0.61	3/13892 (0.0%)

There are no bond length outliers.

All (3) bond angle outliers are listed below:

Mol	Chain	Res	Type	Atoms	Z	Observed(°)	Ideal(°)
1	R	203	ILE	N-CA-C	-5.61	95.84	111.00
1	Q	203	ILE	N-CA-C	-5.56	96.00	111.00
1	O	203	ILE	N-CA-C	-5.25	96.84	111.00

There are no chirality outliers.

There are no planarity outliers.

### 5.2 Too-close contacts [i](#)

In the following table, the Non-H and H(model) columns list the number of non-hydrogen atoms and hydrogen atoms in the chain respectively. The H(added) column lists the number of hydrogen atoms added and optimized by MolProbity. The Clashes column lists the number of clashes within the asymmetric unit, whereas Symm-Clashes lists symmetry-related clashes.

Mol	Chain	Non-H	H(model)	H(added)	Clashes	Symm-Clashes
1	O	2524	0	2572	44	0
1	P	2524	0	2572	37	0
1	Q	2524	0	2572	40	0
1	R	2524	0	2572	46	0

*Continued on next page...*

*Continued from previous page...*

Mol	Chain	Non-H	H(model)	H(added)	Clashes	Symm-Clashes
2	O	44	0	26	0	0
2	P	44	0	26	0	0
2	Q	44	0	26	0	0
2	R	44	0	26	0	0
3	O	10	0	5	0	0
3	P	10	0	5	1	0
3	Q	10	0	5	1	0
3	R	10	0	5	1	0
4	O	143	0	0	1	0
4	P	199	0	0	5	0
4	Q	184	0	0	2	0
4	R	207	0	0	2	0
All	All	11045	0	10412	158	0

The all-atom clashscore is defined as the number of clashes found per 1000 atoms (including hydrogen atoms). The all-atom clashscore for this structure is 8.

All (158) close contacts within the same asymmetric unit are listed below, sorted by their clash magnitude.

Atom-1	Atom-2	Interatomic distance (Å)	Clash overlap (Å)
1:R:329:ALA:HA	1:R:333:LEU:HD11	1.57	0.83
1:Q:329:ALA:HA	1:Q:333:LEU:HD21	1.59	0.82
1:O:329:ALA:HA	1:O:333:LEU:HD21	1.64	0.78
1:Q:301:ASP:HB3	1:R:169:ARG:HD3	1.75	0.68
1:R:159:LYS:O	1:R:163:GLU:HG3	1.97	0.65
1:O:102:ARG:HD2	1:O:123:ASN:O	1.97	0.64
1:P:186:ASP:HA	1:P:196:ALA:O	1.99	0.63
1:Q:249:GLU:OE2	1:Q:302:GLY:HA3	1.99	0.62
1:O:82:LEU:HD13	1:O:84:TRP:CZ2	2.34	0.62
4:P:2366:HOH:O	1:Q:188:PRO:HD3	2.00	0.62
1:Q:184:ILE:HG22	1:Q:185:LEU:HG	1.81	0.62
1:R:329:ALA:HA	1:R:333:LEU:CD1	2.30	0.61
1:O:155:ALA:HB3	1:O:156:PRO:HD3	1.83	0.60
1:O:144:ILE:HD12	1:O:144:ILE:N	2.16	0.60
1:R:77:ARG:HB2	1:R:77:ARG:NH1	2.15	0.60
1:Q:82:LEU:HD13	1:Q:84:TRP:CZ2	2.38	0.58
1:R:186:ASP:HA	1:R:196:ALA:O	2.02	0.58
1:Q:102:ARG:HD2	1:Q:123:ASN:O	2.03	0.58
1:O:45:LYS:HD2	1:O:46:TYR:CE2	2.39	0.58
1:Q:169:ARG:HD3	1:R:301:ASP:HB3	1.84	0.58
1:O:0:ALA:HB3	1:O:24:ASP:O	2.04	0.57

*Continued on next page...*

*Continued from previous page...*

Atom-1	Atom-2	Interatomic distance (Å)	Clash overlap (Å)
1:P:22:ASN:HB3	1:P:25:ILE:HG22	1.87	0.57
1:P:188:PRO:HD3	4:Q:2508:HOH:O	2.05	0.56
1:R:45:LYS:HE2	1:R:52:ARG:HH12	1.69	0.56
1:O:281:ARG:HG2	1:P:202:SER:OG	2.06	0.56
1:R:45:LYS:CE	1:R:52:ARG:HH12	2.19	0.56
1:R:139:LYS:HA	1:R:139:LYS:HE3	1.89	0.55
1:R:144:ILE:HD12	1:R:144:ILE:N	2.22	0.55
1:P:179:THR:OG1	1:P:231:ARG:NH2	2.39	0.55
1:O:2:LYS:HE3	1:O:28:VAL:HG11	1.90	0.54
1:O:79:PRO:HA	1:O:82:LEU:HG	1.89	0.54
1:R:90:ASP:HB3	1:R:333:LEU:HD23	1.90	0.54
1:P:187:LEU:O	1:P:196:ALA:HB1	2.07	0.54
1:Q:236:ASN:O	1:Q:237:VAL:HB	2.08	0.54
1:Q:77:ARG:NH1	1:Q:77:ARG:HB2	2.22	0.54
1:Q:159:LYS:O	1:Q:163:GLU:HG3	2.08	0.54
1:O:65:VAL:HG22	1:O:70:GLU:HG2	1.90	0.54
1:Q:169:ARG:NH2	1:R:303:LYS:HE3	2.22	0.54
1:P:155:ALA:HB3	1:P:156:PRO:HD3	1.89	0.53
1:Q:1:VAL:CG1	1:Q:25:ILE:HD13	2.38	0.53
1:R:155:ALA:HB3	1:R:156:PRO:HD3	1.90	0.53
1:R:135:ASP:OD2	1:R:136:LYS:HE3	2.09	0.53
1:O:186:ASP:HA	1:O:196:ALA:O	2.09	0.53
1:P:122:ALA:C	1:P:122(A):LYS:HD3	2.30	0.53
1:Q:144:ILE:N	1:Q:144:ILE:HD12	2.24	0.53
1:R:236:ASN:OD1	1:R:314:GLU:HG3	2.08	0.53
1:O:56:GLU:O	1:O:66:VAL:HA	2.09	0.53
1:P:139:LYS:O	1:P:139:LYS:HD2	2.09	0.53
1:O:129:VAL:HG23	1:O:217:VAL:HG11	1.91	0.52
1:P:266:GLU:HG3	1:P:267:LEU:HG	1.91	0.52
1:R:332:GLY:C	1:R:333:LEU:HD12	2.30	0.52
1:O:98:ARG:HA	1:O:98:ARG:HE	1.75	0.52
1:R:184:ILE:HG22	1:R:185:LEU:HG	1.91	0.52
1:O:138(A):PRO:HG2	1:O:139:LYS:HD2	1.91	0.52
1:O:159:LYS:O	1:O:163:GLU:HG3	2.10	0.52
1:O:208:THR:HG22	1:O:228:MET:HA	1.92	0.51
1:P:159:LYS:O	1:P:163:GLU:HG3	2.10	0.51
4:P:1591:HOH:O	1:Q:281:ARG:NH2	2.42	0.51
1:Q:187:LEU:O	1:Q:196:ALA:HB1	2.11	0.51
1:P:3:VAL:HG21	1:P:25:ILE:HG13	1.92	0.51
1:P:184:ILE:HG22	1:P:185:LEU:HG	1.91	0.51
1:Q:101:LYS:HE3	4:Q:3607:HOH:O	2.11	0.51

*Continued on next page...*

*Continued from previous page...*

Atom-1	Atom-2	Interatomic distance (Å)	Clash overlap (Å)
1:Q:155:ALA:HB3	1:Q:156:PRO:HD3	1.94	0.50
3:P:2337:G3H:H11	4:P:2608:HOH:O	2.12	0.49
1:P:144:ILE:HD12	1:P:144:ILE:N	2.27	0.49
1:R:122:ALA:C	1:R:122(A):LYS:HD3	2.32	0.49
1:P:63:ASN:ND2	1:P:73:VAL:H	2.10	0.49
1:Q:281:ARG:HG2	1:R:202:SER:OG	2.12	0.49
1:O:236:ASN:O	1:O:237:VAL:HB	2.13	0.49
1:O:300:ILE:HD11	1:P:226:ASN:HB2	1.95	0.49
1:O:139:LYS:HD2	1:O:139:LYS:N	2.27	0.48
1:Q:56:GLU:O	1:Q:66:VAL:HA	2.13	0.48
1:R:77:ARG:HB2	1:R:77:ARG:HH11	1.77	0.48
1:R:172:MET:HG2	1:R:211:ALA:HB2	1.96	0.48
1:Q:236:ASN:OD1	1:Q:314:GLU:HG3	2.13	0.47
1:R:187:LEU:O	1:R:196:ALA:HB1	2.14	0.47
1:Q:176:HIS:HB3	1:Q:231:ARG:HD3	1.95	0.47
1:R:176:HIS:HB3	1:R:231:ARG:HD3	1.96	0.47
1:O:178:TYR:HA	1:O:182:GLN:OE1	2.14	0.47
1:O:233:PRO:HB2	1:P:233:PRO:HB2	1.97	0.47
1:P:260:LYS:O	1:P:264:GLU:HG3	2.15	0.47
1:R:63:ASN:HB3	1:R:70:GLU:HG3	1.97	0.47
1:P:122:ALA:O	1:P:122(A):LYS:HD3	2.15	0.47
1:Q:129:VAL:HG23	1:Q:217:VAL:HG11	1.97	0.47
1:P:176:HIS:O	1:P:231:ARG:HA	2.15	0.46
1:P:64:LEU:HB2	1:P:71:ILE:HB	1.96	0.46
1:R:101:LYS:HE3	1:R:104:ASP:OD2	2.15	0.46
1:O:187:LEU:O	1:O:196:ALA:HB1	2.15	0.46
1:O:333:LEU:N	1:O:333:LEU:HD22	2.29	0.46
1:Q:300:ILE:HG23	1:Q:304:MET:HB3	1.97	0.46
1:O:87:ILE:HG13	1:O:89:VAL:HG23	1.98	0.46
1:R:236:ASN:O	1:R:237:VAL:HB	2.15	0.46
1:O:11:ILE:O	1:O:15:VAL:HG23	2.16	0.46
4:P:2592:HOH:O	1:Q:185:LEU:HD22	2.15	0.46
1:P:179:THR:HG23	1:P:231:ARG:NH2	2.31	0.46
1:R:119:SER:HB2	1:R:317:TYR:HE2	1.81	0.46
1:R:333:LEU:HD12	1:R:333:LEU:N	2.31	0.45
1:P:329:ALA:HA	1:P:333:LEU:HD21	1.98	0.45
1:R:98:ARG:HA	1:R:98:ARG:NE	2.31	0.45
1:R:185:LEU:O	1:R:186:ASP:C	2.54	0.45
1:O:45:LYS:HG3	1:O:52:ARG:CZ	2.46	0.45
1:O:71:ILE:HD12	1:O:71:ILE:N	2.30	0.45
1:P:45:LYS:NZ	1:P:52:ARG:HD3	2.31	0.45

*Continued on next page...*

*Continued from previous page...*

Atom-1	Atom-2	Interatomic distance (Å)	Clash overlap (Å)
1:P:236:ASN:O	1:P:237:VAL:HB	2.14	0.45
1:Q:41:ALA:O	1:Q:45:LYS:HG3	2.17	0.45
1:P:251:THR:OG1	1:P:254:GLU:HG3	2.16	0.45
1:Q:149:ALA:HB3	3:Q:3337:G3H:O1	2.17	0.45
1:Q:329:ALA:HA	1:Q:333:LEU:CD2	2.39	0.45
1:P:62:ASN:O	1:P:73:VAL:HB	2.16	0.45
1:O:154:LEU:HD22	1:O:172:MET:CE	2.47	0.45
1:O:281:ARG:NH2	4:R:1587:HOH:O	2.49	0.45
1:Q:159:LYS:HB2	1:Q:218:LEU:HD11	1.98	0.45
1:P:22:ASN:HB3	1:P:25:ILE:CG2	2.47	0.45
1:P:185:LEU:O	1:P:186:ASP:C	2.55	0.44
1:R:102:ARG:HD2	1:R:123:ASN:O	2.16	0.44
1:R:136:LYS:HA	1:R:136:LYS:HD3	1.78	0.44
1:Q:45:LYS:HG2	1:Q:57:VAL:HB	2.00	0.44
1:R:77:ARG:HH11	1:R:77:ARG:CB	2.31	0.43
1:R:191:LYS:HG2	4:R:4436:HOH:O	2.17	0.43
1:O:90:ASP:O	1:O:114:LYS:HB2	2.18	0.43
1:O:138:ASP:HA	1:O:138(A):PRO:HD2	1.88	0.43
1:Q:333:LEU:HD22	1:Q:333:LEU:N	2.33	0.43
1:O:154:LEU:HD22	1:O:172:MET:HE2	2.00	0.43
1:Q:181:ASP:OD2	1:Q:195:ARG:NH1	2.49	0.43
1:R:208:THR:HG22	1:R:228:MET:HA	2.01	0.43
1:O:289:SER:OG	1:O:320:ARG:HD2	2.18	0.43
1:R:32:ASP:O	1:R:75:ALA:HA	2.18	0.43
1:O:305:VAL:HG22	1:O:306:LYS:N	2.34	0.42
1:P:238:SER:HB2	1:P:311:TYR:CZ	2.54	0.42
1:O:171:MET:HA	1:O:226:ASN:O	2.19	0.42
1:O:300:ILE:HD11	1:P:226:ASN:CB	2.49	0.42
1:Q:128:ILE:HD11	1:Q:137:TYR:HB2	2.01	0.42
1:R:1:VAL:HG12	1:R:24:ASP:O	2.19	0.42
1:P:79:PRO:HG2	1:P:107:LYS:CD	2.50	0.42
1:P:178:TYR:HA	1:P:182:GLN:OE1	2.20	0.42
4:O:4504:HOH:O	1:R:188:PRO:HD3	2.18	0.42
1:O:260:LYS:O	1:O:264:GLU:HG3	2.20	0.42
1:Q:202:SER:OG	1:R:281:ARG:HG2	2.20	0.42
1:R:174:THR:HG23	1:R:174:THR:O	2.20	0.42
1:O:263:ALA:O	1:O:268:LYS:HA	2.19	0.42
1:Q:64:LEU:HG	1:Q:73:VAL:CG2	2.49	0.42
1:P:212:LYS:HE3	4:P:1606:HOH:O	2.20	0.41
1:R:249:GLU:OE2	1:R:303:LYS:HG3	2.20	0.41
1:P:213:ALA:O	1:P:216:LEU:HB2	2.21	0.41

*Continued on next page...*

Continued from previous page...

Atom-1	Atom-2	Interatomic distance (Å)	Clash overlap (Å)
1:Q:266:GLU:HG2	1:Q:267:LEU:HG	2.03	0.41
1:O:176:HIS:HB3	1:O:231:ARG:HD3	2.03	0.41
1:Q:190:HIS:HB3	1:Q:196:ALA:HB2	2.03	0.41
1:O:240:VAL:HG23	1:O:311:TYR:CE1	2.56	0.41
1:P:242:LEU:O	1:P:306:LYS:HA	2.21	0.41
1:Q:256:ASN:HD22	1:Q:256:ASN:HA	1.64	0.41
1:R:126:ILE:HD13	1:R:128:ILE:HD11	2.02	0.41
1:R:176:HIS:NE2	3:R:4337:G3H:C1	2.84	0.40
1:Q:176:HIS:O	1:Q:231:ARG:HA	2.22	0.40
1:R:22:ASN:HA	1:R:23:PRO:HD2	1.95	0.40
1:O:25:ILE:HG13	1:O:322:VAL:HG13	2.01	0.40
1:O:320:ARG:NE	1:O:320:ARG:HA	2.36	0.40
1:P:79:PRO:HG2	1:P:107:LYS:HD2	2.04	0.40
1:Q:245:GLU:HG3	1:R:245:GLU:OE1	2.21	0.40

There are no symmetry-related clashes.

## 5.3 Torsion angles [i](#)

### 5.3.1 Protein backbone [i](#)

In the following table, the Percentiles column shows the percent Ramachandran outliers of the chain as a percentile score with respect to all X-ray entries followed by that with respect to entries of similar resolution.

The Analysed column shows the number of residues for which the backbone conformation was analysed, and the total number of residues.

Mol	Chain	Analysed	Favoured	Allowed	Outliers	Percentiles	
1	O	332/334 (99%)	312 (94%)	18 (5%)	2 (1%)	25	26
1	P	332/334 (99%)	314 (95%)	16 (5%)	2 (1%)	25	26
1	Q	332/334 (99%)	313 (94%)	16 (5%)	3 (1%)	17	16
1	R	332/334 (99%)	316 (95%)	14 (4%)	2 (1%)	25	26
All	All	1328/1336 (99%)	1255 (94%)	64 (5%)	9 (1%)	22	22

All (9) Ramachandran outliers are listed below:

Mol	Chain	Res	Type
1	O	186	ASP

Continued on next page...

*Continued from previous page...*

Mol	Chain	Res	Type
1	O	237	VAL
1	P	186	ASP
1	P	237	VAL
1	Q	237	VAL
1	Q	302	GLY
1	R	186	ASP
1	R	237	VAL
1	Q	198	ALA

### 5.3.2 Protein sidechains ⓘ

In the following table, the Percentiles column shows the percent sidechain outliers of the chain as a percentile score with respect to all X-ray entries followed by that with respect to entries of similar resolution.

The Analysed column shows the number of residues for which the sidechain conformation was analysed, and the total number of residues.

Mol	Chain	Analysed	Rotameric	Outliers	Percentiles	
1	O	271/271 (100%)	266 (98%)	5 (2%)	59	72
1	P	271/271 (100%)	269 (99%)	2 (1%)	84	91
1	Q	271/271 (100%)	269 (99%)	2 (1%)	84	91
1	R	271/271 (100%)	267 (98%)	4 (2%)	65	78
All	All	1084/1084 (100%)	1071 (99%)	13 (1%)	71	83

All (13) residues with a non-rotameric sidechain are listed below:

Mol	Chain	Res	Type
1	O	52	ARG
1	O	98	ARG
1	O	135	ASP
1	O	172	MET
1	O	246	LEU
1	P	172	MET
1	P	246	LEU
1	Q	172	MET
1	Q	246	LEU
1	R	70	GLU
1	R	139	LYS
1	R	212	LYS
1	R	246	LEU

Sometimes sidechains can be flipped to improve hydrogen bonding and reduce clashes. All (23) such sidechains are listed below:

Mol	Chain	Res	Type
1	O	38	ASN
1	O	123	ASN
1	O	146	ASN
1	O	164	GLN
1	O	256	ASN
1	P	38	ASN
1	P	63	ASN
1	P	81	ASN
1	P	146	ASN
1	P	164	GLN
1	P	256	ASN
1	Q	62	ASN
1	Q	63	ASN
1	Q	81	ASN
1	Q	146	ASN
1	Q	152	ASN
1	Q	164	GLN
1	Q	256	ASN
1	R	38	ASN
1	R	60	ASN
1	R	81	ASN
1	R	146	ASN
1	R	256	ASN

### 5.3.3 RNA ⓘ

There are no RNA molecules in this entry.

## 5.4 Non-standard residues in protein, DNA, RNA chains ⓘ

There are no non-standard protein/DNA/RNA residues in this entry.

## 5.5 Carbohydrates ⓘ

There are no monosaccharides in this entry.

## 5.6 Ligand geometry

8 ligands are modelled in this entry.

In the following table, the Counts columns list the number of bonds (or angles) for which Mogul statistics could be retrieved, the number of bonds (or angles) that are observed in the model and the number of bonds (or angles) that are defined in the Chemical Component Dictionary. The Link column lists molecule types, if any, to which the group is linked. The Z score for a bond length (or angle) is the number of standard deviations the observed value is removed from the expected value. A bond length (or angle) with  $|Z| > 2$  is considered an outlier worth inspection. RMSZ is the root-mean-square of all Z scores of the bond lengths (or angles).

Mol	Type	Chain	Res	Link	Bond lengths			Bond angles		
					Counts	RMSZ	# Z  > 2	Counts	RMSZ	# Z  > 2
3	G3H	Q	3337	-	8,9,9	1.57	2 (25%)	10,12,12	2.07	3 (30%)
3	G3H	P	2337	-	8,9,9	1.49	1 (12%)	10,12,12	2.02	3 (30%)
2	NAD	Q	3336	-	42,48,48	1.55	5 (11%)	50,73,73	1.42	3 (6%)
3	G3H	R	4337	-	8,9,9	1.50	1 (12%)	10,12,12	1.91	3 (30%)
2	NAD	O	1336	-	42,48,48	1.54	3 (7%)	50,73,73	1.38	5 (10%)
2	NAD	P	2336	-	42,48,48	1.59	5 (11%)	50,73,73	1.46	7 (14%)
3	G3H	O	1337	-	8,9,9	1.22	0	10,12,12	1.84	4 (40%)
2	NAD	R	4336	-	42,48,48	1.57	4 (9%)	50,73,73	1.37	6 (12%)

In the following table, the Chirals column lists the number of chiral outliers, the number of chiral centers analysed, the number of these observed in the model and the number defined in the Chemical Component Dictionary. Similar counts are reported in the Torsion and Rings columns. '-' means no outliers of that kind were identified.

Mol	Type	Chain	Res	Link	Chirals	Torsions	Rings
3	G3H	Q	3337	-	-	3/7/8/8	-
3	G3H	P	2337	-	-	3/7/8/8	-
2	NAD	Q	3336	-	-	5/26/62/62	0/5/5/5
3	G3H	R	4337	-	-	3/7/8/8	-
2	NAD	O	1336	-	-	5/26/62/62	0/5/5/5
2	NAD	P	2336	-	-	5/26/62/62	0/5/5/5
3	G3H	O	1337	-	-	3/7/8/8	-
2	NAD	R	4336	-	-	5/26/62/62	0/5/5/5

All (21) bond length outliers are listed below:

Mol	Chain	Res	Type	Atoms	Z	Observed(Å)	Ideal(Å)
2	R	4336	NAD	C2N-N1N	7.36	1.43	1.35

Continued on next page...

*Continued from previous page...*

Mol	Chain	Res	Type	Atoms	Z	Observed(Å)	Ideal(Å)
2	O	1336	NAD	C2N-N1N	7.35	1.43	1.35
2	P	2336	NAD	C2N-N1N	7.26	1.43	1.35
2	Q	3336	NAD	C2N-N1N	6.91	1.43	1.35
2	P	2336	NAD	O4D-C1D	3.35	1.45	1.41
2	R	4336	NAD	C6N-N1N	3.22	1.43	1.35
2	P	2336	NAD	C6N-N1N	3.19	1.43	1.35
2	Q	3336	NAD	O4D-C1D	3.05	1.45	1.41
2	Q	3336	NAD	C6N-N1N	2.97	1.42	1.35
2	O	1336	NAD	O4D-C1D	2.94	1.45	1.41
2	O	1336	NAD	C6N-N1N	2.84	1.42	1.35
3	Q	3337	G3H	C3-C2	2.70	1.55	1.51
2	Q	3336	NAD	O4B-C1B	2.62	1.44	1.41
2	R	4336	NAD	O4B-C1B	2.56	1.44	1.41
3	P	2337	G3H	C3-C2	2.53	1.55	1.51
3	R	4337	G3H	C3-C2	2.35	1.54	1.51
2	P	2336	NAD	O4B-C1B	2.32	1.44	1.41
2	R	4336	NAD	O4D-C1D	2.28	1.44	1.41
3	Q	3337	G3H	P-O1P	2.11	1.67	1.60
2	Q	3336	NAD	C2A-N3A	2.06	1.35	1.32
2	P	2336	NAD	C5A-N7A	-2.06	1.32	1.39

All (34) bond angle outliers are listed below:

Mol	Chain	Res	Type	Atoms	Z	Observed(°)	Ideal(°)
2	P	2336	NAD	N3A-C2A-N1A	-6.19	119.00	128.68
2	Q	3336	NAD	N3A-C2A-N1A	-6.12	119.11	128.68
2	O	1336	NAD	N3A-C2A-N1A	-5.81	119.60	128.68
2	R	4336	NAD	N3A-C2A-N1A	-5.71	119.76	128.68
3	Q	3337	G3H	O1P-C3-C2	3.86	118.57	108.33
3	R	4337	G3H	O1P-C3-C2	3.68	118.09	108.33
3	P	2337	G3H	O1P-C3-C2	3.63	117.96	108.33
3	O	1337	G3H	O1P-C3-C2	3.50	117.61	108.33
3	P	2337	G3H	P-O1P-C3	3.26	127.28	118.30
3	Q	3337	G3H	O2-C2-C1	-3.18	102.89	109.17
3	Q	3337	G3H	P-O1P-C3	3.02	126.62	118.30
2	P	2336	NAD	C2A-N1A-C6A	2.98	123.84	118.75
2	Q	3336	NAD	C4A-C5A-N7A	2.92	112.45	109.40
3	P	2337	G3H	O2-C2-C1	-2.91	103.43	109.17
3	R	4337	G3H	P-O1P-C3	2.86	126.18	118.30
2	P	2336	NAD	C4A-C5A-N7A	2.85	112.37	109.40
3	R	4337	G3H	O2-C2-C1	-2.79	103.67	109.17
2	R	4336	NAD	C4A-C5A-N7A	2.69	112.20	109.40

*Continued on next page...*

*Continued from previous page...*

Mol	Chain	Res	Type	Atoms	Z	Observed(°)	Ideal(°)
2	O	1336	NAD	C4A-C5A-N7A	2.68	112.19	109.40
2	R	4336	NAD	C5A-C6A-N6A	2.59	124.29	120.35
2	O	1336	NAD	C2A-N1A-C6A	2.55	123.12	118.75
2	Q	3336	NAD	C2A-N1A-C6A	2.55	123.11	118.75
3	O	1337	G3H	O2-C2-C1	-2.52	104.20	109.17
2	R	4336	NAD	C5N-C4N-C3N	2.42	123.20	120.34
2	R	4336	NAD	C2A-N1A-C6A	2.35	122.77	118.75
2	R	4336	NAD	C1B-N9A-C4A	-2.24	122.71	126.64
2	P	2336	NAD	C1B-N9A-C4A	-2.17	122.83	126.64
3	O	1337	G3H	P-O1P-C3	2.16	124.24	118.30
2	P	2336	NAD	C5A-C6A-N6A	2.12	123.58	120.35
2	O	1336	NAD	O2D-C2D-C3D	2.07	118.51	111.82
2	P	2336	NAD	C5N-C4N-C3N	2.06	122.78	120.34
3	O	1337	G3H	O4P-P-O3P	2.06	115.50	107.64
2	O	1336	NAD	C2N-N1N-C1D	2.06	123.71	119.14
2	P	2336	NAD	O2D-C2D-C3D	2.00	118.30	111.82

There are no chirality outliers.

All (32) torsion outliers are listed below:

Mol	Chain	Res	Type	Atoms
2	O	1336	NAD	O4D-C1D-N1N-C2N
2	O	1336	NAD	O4D-C1D-N1N-C6N
2	O	1336	NAD	C2D-C1D-N1N-C2N
2	O	1336	NAD	C2D-C1D-N1N-C6N
2	P	2336	NAD	O4D-C1D-N1N-C2N
2	P	2336	NAD	O4D-C1D-N1N-C6N
2	P	2336	NAD	C2D-C1D-N1N-C2N
2	P	2336	NAD	C2D-C1D-N1N-C6N
2	Q	3336	NAD	O4D-C1D-N1N-C2N
2	Q	3336	NAD	O4D-C1D-N1N-C6N
2	Q	3336	NAD	C2D-C1D-N1N-C2N
2	Q	3336	NAD	C2D-C1D-N1N-C6N
2	R	4336	NAD	O4D-C1D-N1N-C2N
2	R	4336	NAD	O4D-C1D-N1N-C6N
2	R	4336	NAD	C2D-C1D-N1N-C2N
2	R	4336	NAD	C2D-C1D-N1N-C6N
3	O	1337	G3H	C3-O1P-P-O2P
3	O	1337	G3H	C3-O1P-P-O3P
3	O	1337	G3H	C3-O1P-P-O4P
3	P	2337	G3H	C3-O1P-P-O2P
3	P	2337	G3H	C3-O1P-P-O3P

*Continued on next page...*

*Continued from previous page...*

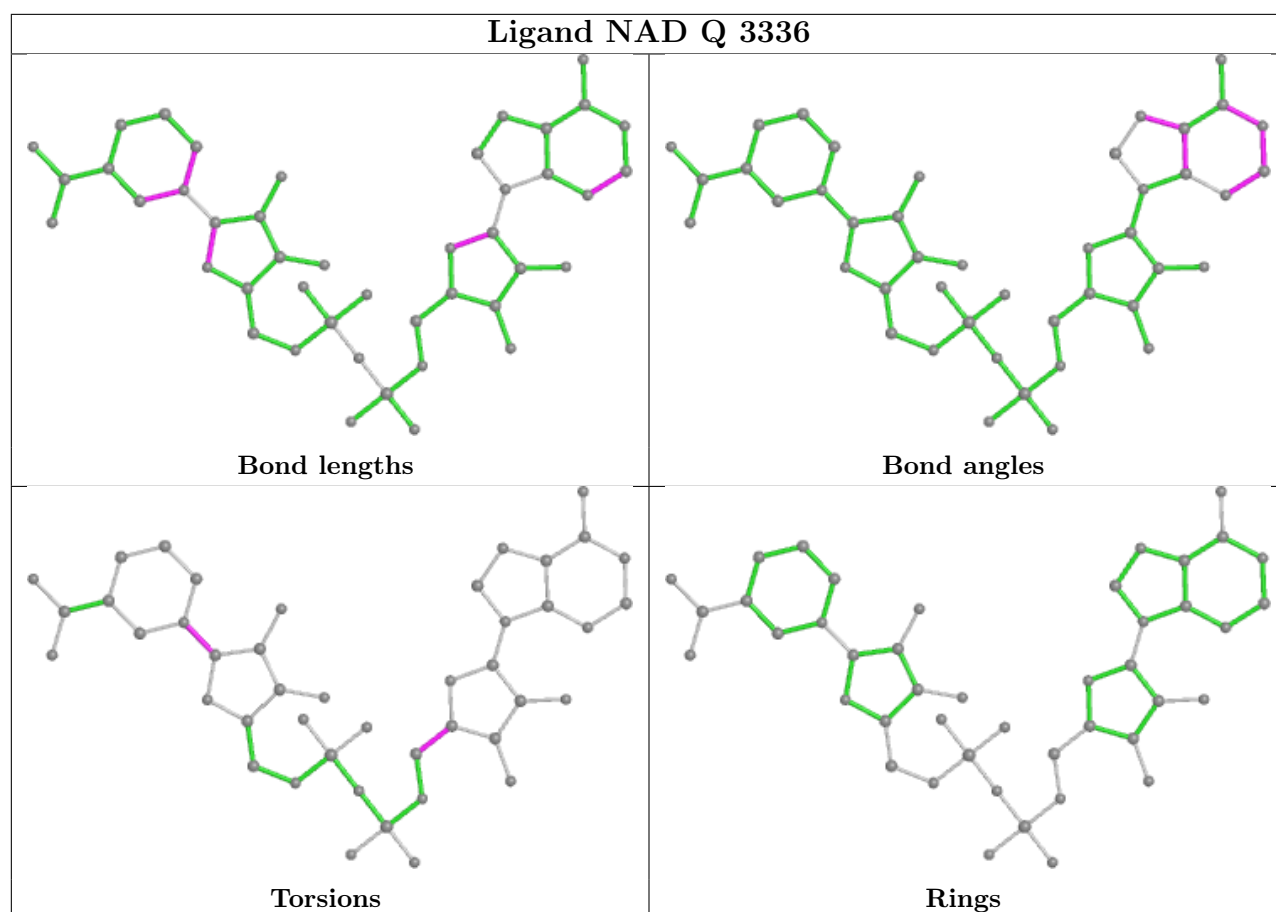
Mol	Chain	Res	Type	Atoms
3	P	2337	G3H	C3-O1P-P-O4P
3	Q	3337	G3H	C3-O1P-P-O2P
3	Q	3337	G3H	C3-O1P-P-O3P
3	Q	3337	G3H	C3-O1P-P-O4P
3	R	4337	G3H	C3-O1P-P-O2P
3	R	4337	G3H	C3-O1P-P-O3P
3	R	4337	G3H	C3-O1P-P-O4P
2	R	4336	NAD	O4B-C4B-C5B-O5B
2	O	1336	NAD	O4B-C4B-C5B-O5B
2	P	2336	NAD	O4B-C4B-C5B-O5B
2	Q	3336	NAD	O4B-C4B-C5B-O5B

There are no ring outliers.

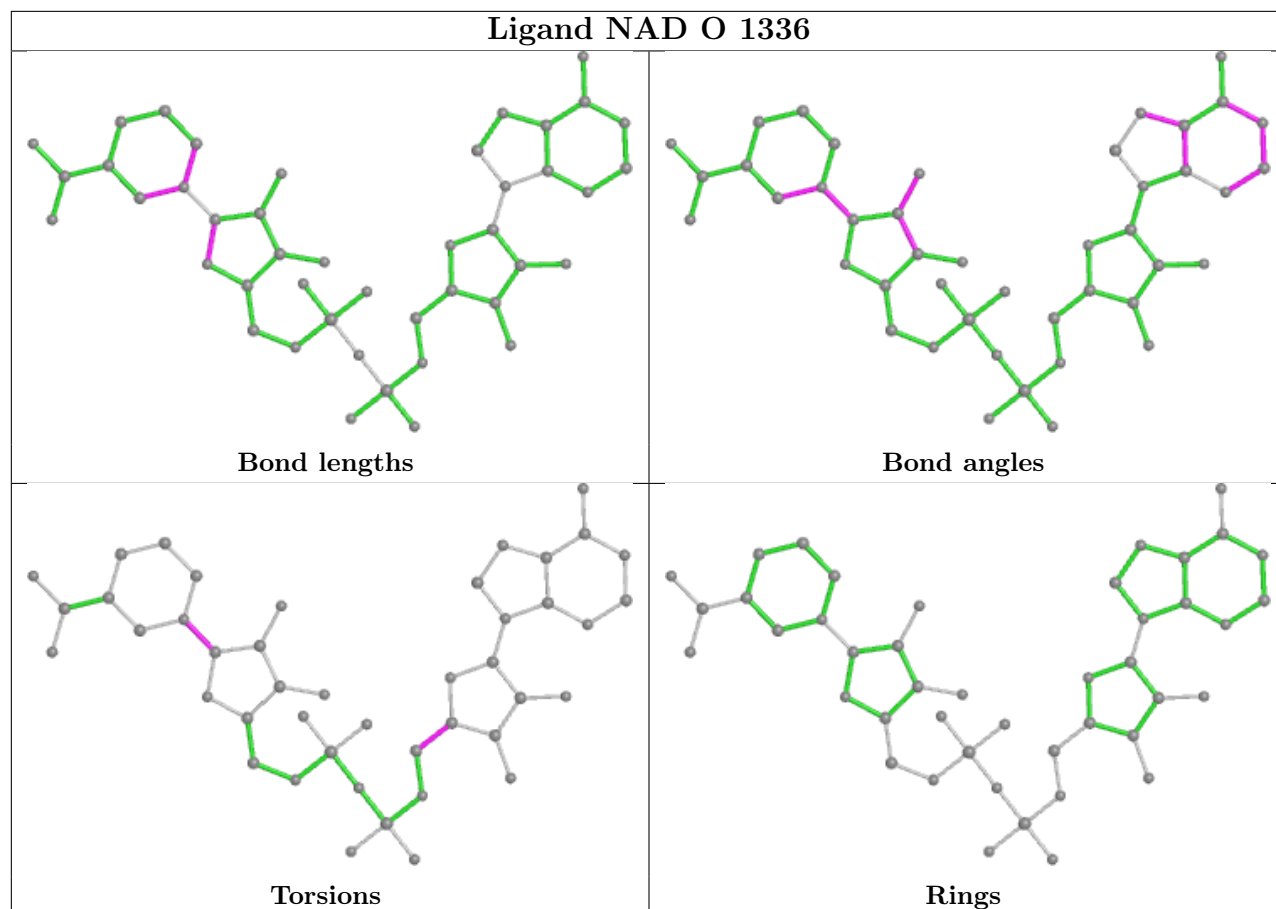
3 monomers are involved in 3 short contacts:

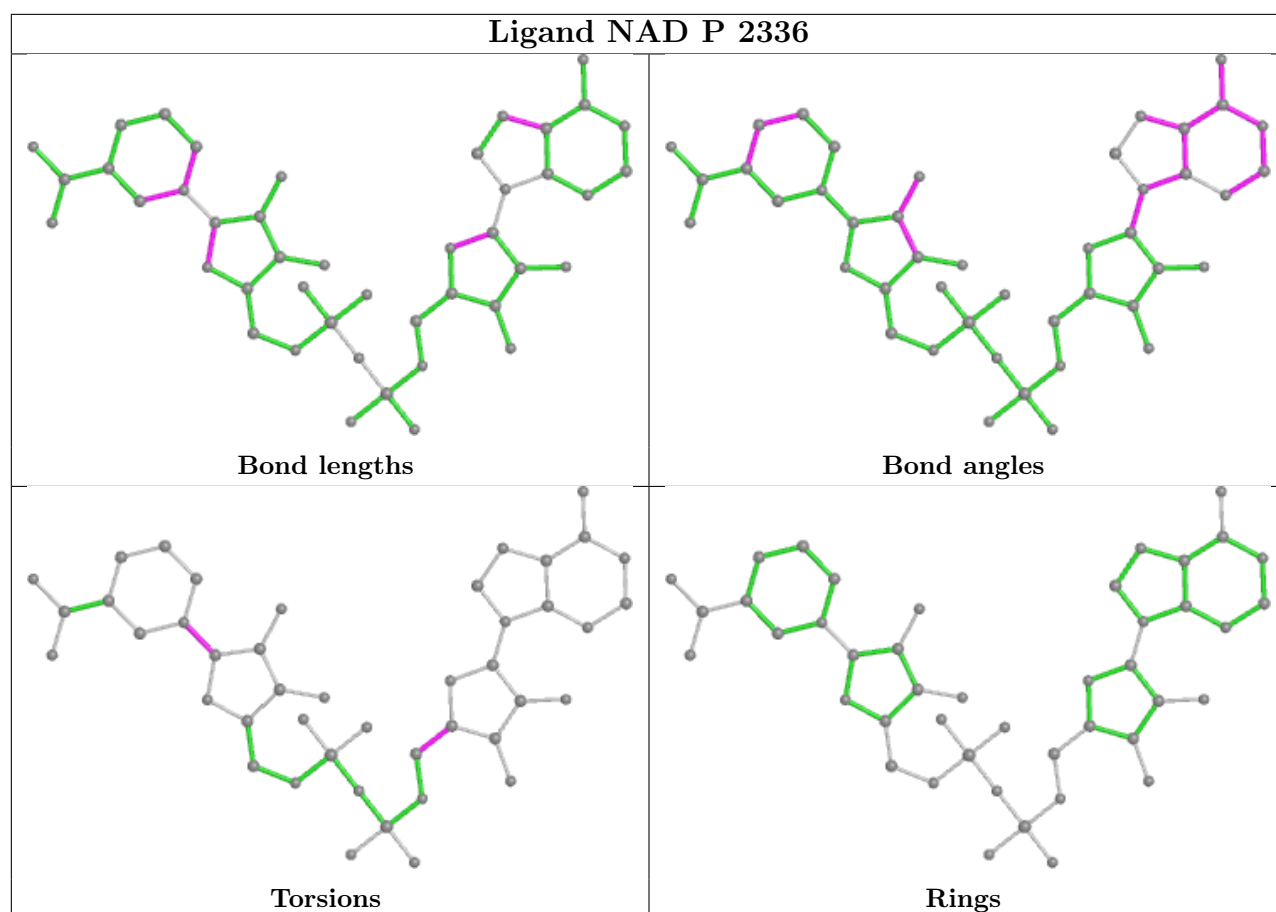
Mol	Chain	Res	Type	Clashes	Symm-Clashes
3	Q	3337	G3H	1	0
3	P	2337	G3H	1	0
3	R	4337	G3H	1	0

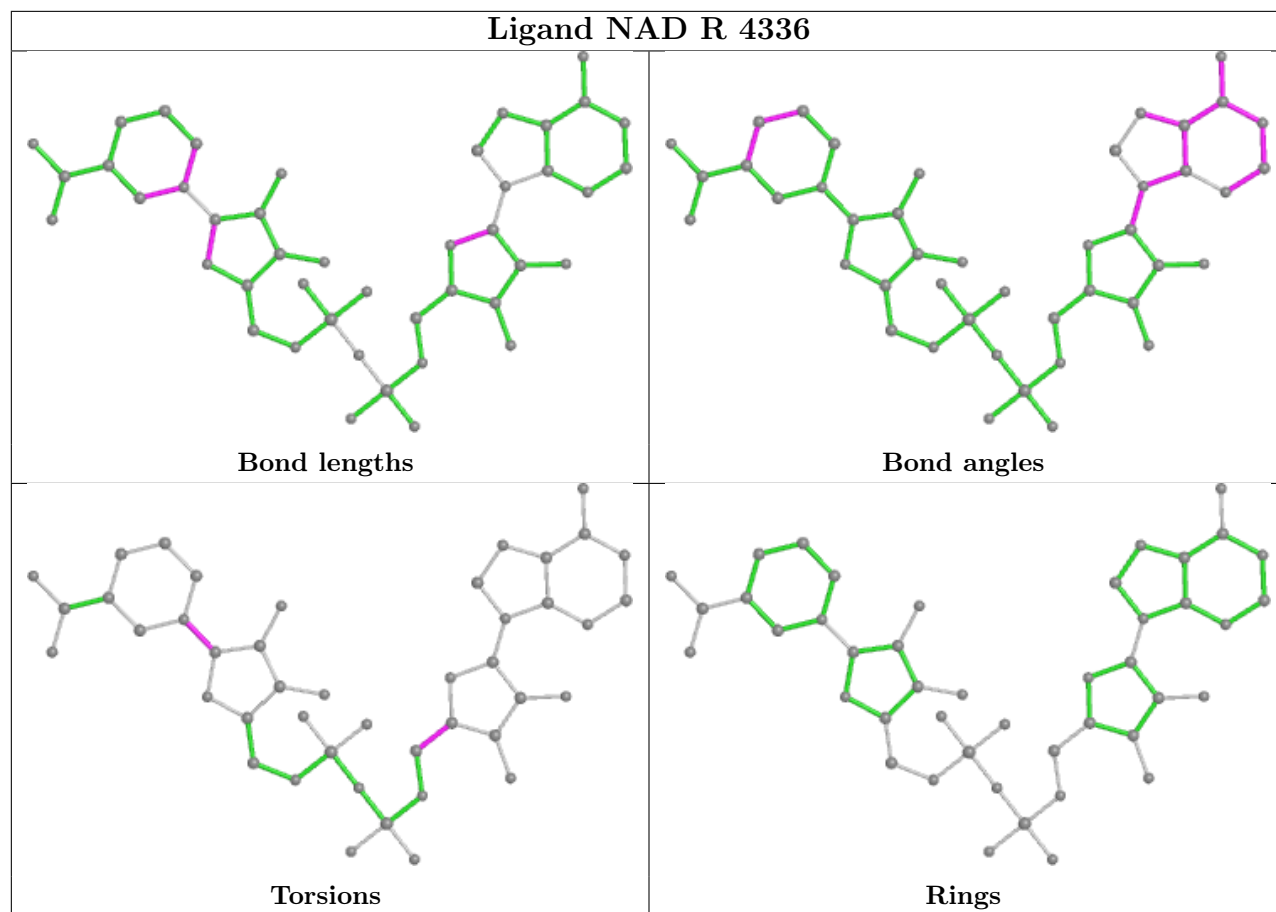
The following is a two-dimensional graphical depiction of Mogul quality analysis of bond lengths, bond angles, torsion angles, and ring geometry for all instances of the Ligand of Interest. In addition, ligands with molecular weight > 250 and outliers as shown on the validation Tables will also be included. For torsion angles, if less than 5% of the Mogul distribution of torsion angles is within 10 degrees of the torsion angle in question, then that torsion angle is considered an outlier. Any bond that is central to one or more torsion angles identified as an outlier by Mogul will be highlighted in the graph. For rings, the root-mean-square deviation (RMSD) between the ring in question and similar rings identified by Mogul is calculated over all ring torsion angles. If the average RMSD is greater than 60 degrees and the minimal RMSD between the ring in question and any Mogul-identified rings is also greater than 60 degrees, then that ring is considered an outlier. The outliers are highlighted in purple. The color gray indicates Mogul did not find sufficient equivalents in the CSD to analyse the geometry.



## Ligand NAD O 1336







## 5.7 Other polymers [i](#)

There are no such residues in this entry.

## 5.8 Polymer linkage issues [i](#)

There are no chain breaks in this entry.

## 6 Fit of model and data [i](#)

### 6.1 Protein, DNA and RNA chains [i](#)

In the following table, the column labelled ‘#RSRZ> 2’ contains the number (and percentage) of RSRZ outliers, followed by percent RSRZ outliers for the chain as percentile scores relative to all X-ray entries and entries of similar resolution. The OWAB column contains the minimum, median, 95<sup>th</sup> percentile and maximum values of the occupancy-weighted average B-factor per residue. The column labelled ‘Q< 0.9’ lists the number of (and percentage) of residues with an average occupancy less than 0.9.

Mol	Chain	Analysed	<RSRZ>	#RSRZ>2	OWAB(Å <sup>2</sup> )	Q<0.9
1	O	334/334 (100%)	-0.47	2 (0%) 89 88	12, 25, 43, 49	0
1	P	334/334 (100%)	-0.72	1 (0%) 94 93	10, 18, 32, 39	0
1	Q	334/334 (100%)	-0.62	2 (0%) 89 88	11, 21, 39, 46	0
1	R	334/334 (100%)	-0.73	0 100 100	10, 18, 34, 42	0
All	All	1336/1336 (100%)	-0.63	5 (0%) 92 91	10, 21, 38, 49	0

All (5) RSRZ outliers are listed below:

Mol	Chain	Res	Type	RSRZ
1	O	0	ALA	3.6
1	Q	0	ALA	3.1
1	Q	23	PRO	2.6
1	O	69	LYS	2.5
1	P	191	LYS	2.2

### 6.2 Non-standard residues in protein, DNA, RNA chains [i](#)

There are no non-standard protein/DNA/RNA residues in this entry.

### 6.3 Carbohydrates [i](#)

There are no monosaccharides in this entry.

### 6.4 Ligands [i](#)

In the following table, the Atoms column lists the number of modelled atoms in the group and the number defined in the chemical component dictionary. The B-factors column lists the minimum,

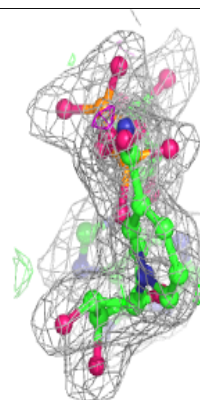
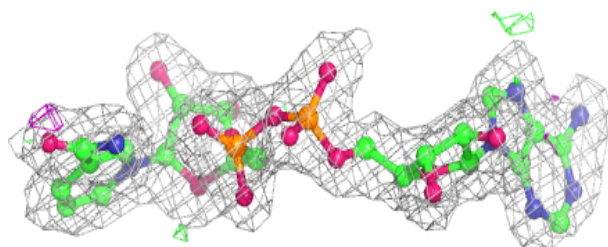
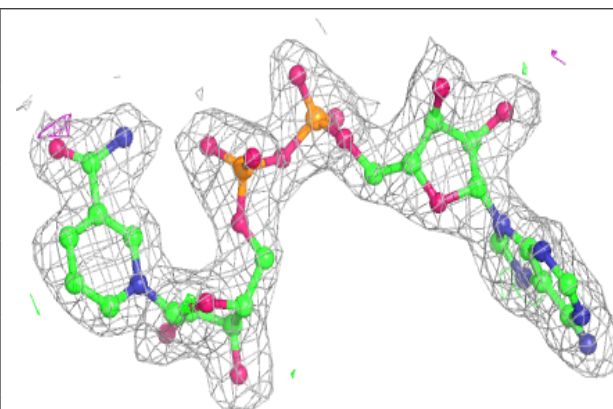
median, 95<sup>th</sup> percentile and maximum values of B factors of atoms in the group. The column labelled 'Q<0.9' lists the number of atoms with occupancy less than 0.9.

Mol	Type	Chain	Res	Atoms	RSCC	RSR	B-factors( $\text{\AA}^2$ )	Q<0.9
3	G3H	P	2337	10/10	0.67	0.32	33,46,53,55	0
3	G3H	Q	3337	10/10	0.73	0.27	31,43,50,51	0
3	G3H	R	4337	10/10	0.78	0.32	37,45,48,49	0
3	G3H	O	1337	10/10	0.82	0.23	37,48,50,51	0
2	NAD	O	1336	44/44	0.97	0.07	11,18,22,25	0
2	NAD	Q	3336	44/44	0.98	0.08	16,18,21,22	0
2	NAD	R	4336	44/44	0.98	0.07	11,14,15,17	0
2	NAD	P	2336	44/44	0.98	0.06	12,14,16,18	0

The following is a graphical depiction of the model fit to experimental electron density of all instances of the Ligand of Interest. In addition, ligands with molecular weight > 250 and outliers as shown on the geometry validation Tables will also be included. Each fit is shown from different orientation to approximate a three-dimensional view.

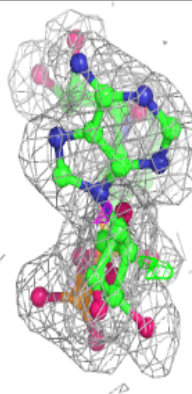
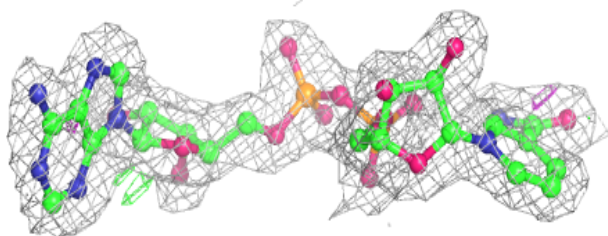
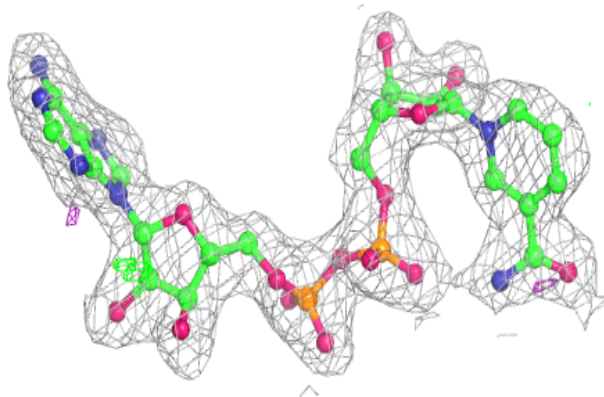
**Electron density around NAD O 1336:**

2mF<sub>o</sub>-DF<sub>c</sub> (at 0.7 rmsd) in gray  
mF<sub>o</sub>-DF<sub>c</sub> (at 3 rmsd) in purple (negative)  
and green (positive)

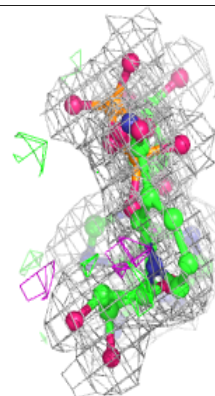
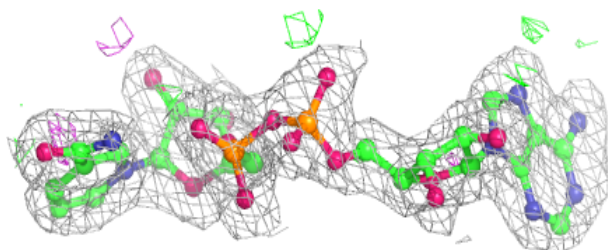
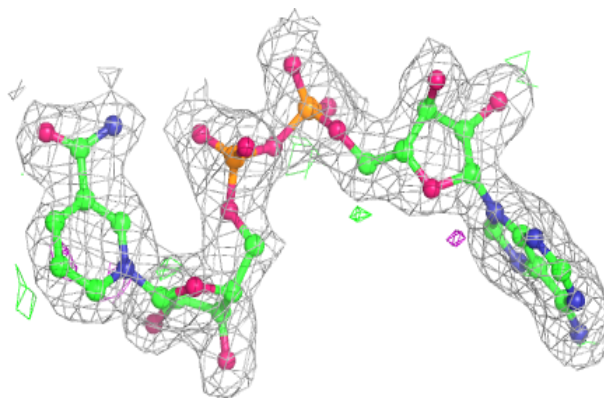


**Electron density around NAD Q 3336:**

$2mF_o-DF_c$  (at 0.7 rmsd) in gray  
 $mF_o-DF_c$  (at 3 rmsd) in purple (negative)  
and green (positive)

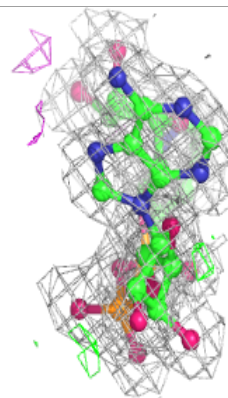
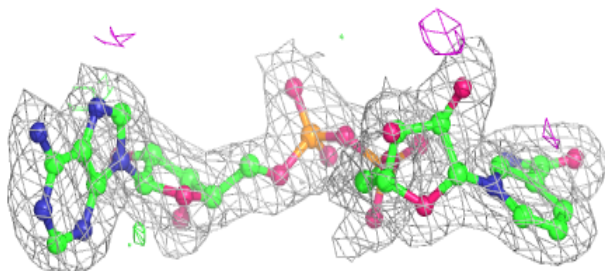
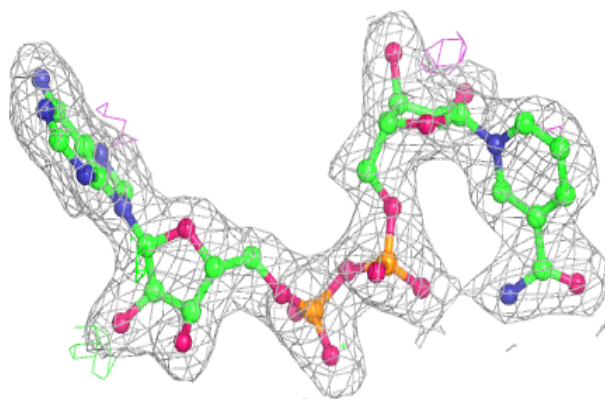
**Electron density around NAD R 4336:**

$2mF_o-DF_c$  (at 0.7 rmsd) in gray  
 $mF_o-DF_c$  (at 3 rmsd) in purple (negative)  
and green (positive)



**Electron density around NAD P 2336:**

$2mF_o-DF_c$  (at 0.7 rmsd) in gray  
 $mF_o-DF_c$  (at 3 rmsd) in purple (negative)  
and green (positive)



## 6.5 Other polymers [i](#)

There are no such residues in this entry.