



wwPDB X-ray Structure Validation Summary Report ⓘ

Oct 11, 2021 – 07:04 PM EDT

PDB ID : 2NVU
Title : Structure of APPBP1-UBA3 NEDD8-NEDD8-MgATP-Ubc12(C111A), a trapped ubiquitin-like protein activation complex
Authors : Huang, D.T.; Hunt, H.W.; Zhuang, M.; Ohi, M.D.; Holton, J.M.; Schulman, B.A.
Deposited on : 2006-11-13
Resolution : 2.80 Å(reported)

This is a wwPDB X-ray Structure Validation Summary Report for a publicly released PDB entry.

We welcome your comments at validation@mail.wwpdb.org

A user guide is available at

<https://www.wwpdb.org/validation/2017/XrayValidationReportHelp>

with specific help available everywhere you see the ⓘ symbol.

The following versions of software and data (see [references ⓘ](#)) were used in the production of this report:

MolProbity	:	4.02b-467
Mogul	:	1.8.5 (274361), CSD as541be (2020)
Xtriage (Phenix)	:	1.13
EDS	:	2.23.2
buster-report	:	1.1.7 (2018)
Percentile statistics	:	20191225.v01 (using entries in the PDB archive December 25th 2019)
Refmac	:	5.8.0158
CCP4	:	7.0.044 (Gargrove)
Ideal geometry (proteins)	:	Engh & Huber (2001)
Ideal geometry (DNA, RNA)	:	Parkinson et al. (1996)
Validation Pipeline (wwPDB-VP)	:	2.23.2

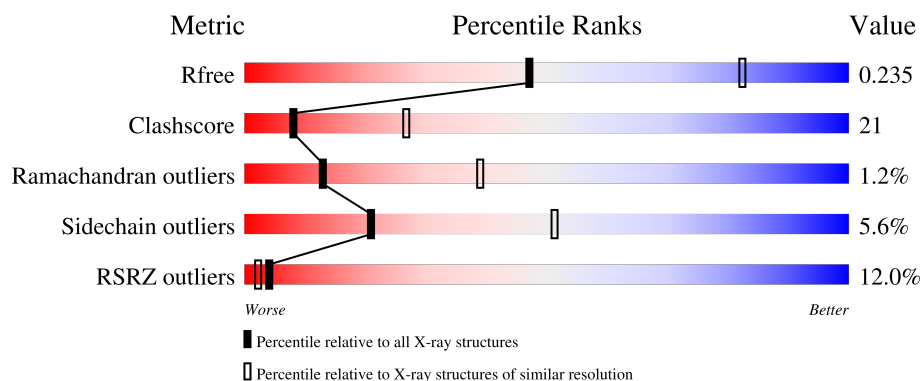
1 Overall quality at a glance

The following experimental techniques were used to determine the structure:

X-RAY DIFFRACTION

The reported resolution of this entry is 2.80 Å.

Percentile scores (ranging between 0-100) for global validation metrics of the entry are shown in the following graphic. The table shows the number of entries on which the scores are based.



Metric	Whole archive (#Entries)	Similar resolution (#Entries, resolution range(Å))
R_{free}	130704	3140 (2.80-2.80)
Clashscore	141614	3569 (2.80-2.80)
Ramachandran outliers	138981	3498 (2.80-2.80)
Sidechain outliers	138945	3500 (2.80-2.80)
RSRZ outliers	127900	3078 (2.80-2.80)

The table below summarises the geometric issues observed across the polymeric chains and their fit to the electron density. The red, orange, yellow and green segments of the lower bar indicate the fraction of residues that contain outliers for ≥ 3 , 2, 1 and 0 types of geometric quality criteria respectively. A grey segment represents the fraction of residues that are not modelled. The numeric value for each fraction is indicated below the corresponding segment, with a dot representing fractions $\leq 5\%$. The upper red bar (where present) indicates the fraction of residues that have poor fit to the electron density. The numeric value is given above the bar.

Mol	Chain	Length	Quality of chain
1	A	536	<div> <div></div> <div>65% 32% ..</div> </div>
2	B	805	<div> <div>16%</div> <div>58% 37% . .</div> </div>
3	C	180	<div> <div></div> <div>68% 26% . .</div> </div>
4	I	81	<div> <div></div> <div>62% 28% . 6%</div> </div>
4	J	81	<div> <div>80%</div> <div>32% 52% 10% 6%</div> </div>

2 Entry composition

There are 8 unique types of molecules in this entry. The entry contains 13090 atoms, of which 0 are hydrogens and 0 are deuteriums.

In the tables below, the ZeroOcc column contains the number of atoms modelled with zero occupancy, the AltConf column contains the number of residues with at least one atom in alternate conformation and the Trace column contains the number of residues modelled with at most 2 atoms.

- Molecule 1 is a protein called NEDD8-activating enzyme E1 regulatory subunit.

Mol	Chain	Residues	Atoms					ZeroOcc	AltConf	Trace
1	A	530	Total	C	N	O	S	0	0	0
			4212	2664	719	813	16			

There are 2 discrepancies between the modelled and reference sequences:

Chain	Residue	Modelled	Actual	Comment	Reference
A	-1	GLY	-	cloning artifact	UNP Q13564
A	0	SER	-	cloning artifact	UNP Q13564

- Molecule 2 is a protein called Maltose binding protein/NEDD8-activating enzyme E1 catalytic subunit chimera.

Mol	Chain	Residues	Atoms					ZeroOcc	AltConf	Trace
2	B	789	Total	C	N	O	S	0	0	0
			6174	3957	1026	1167	24			

There are 5 discrepancies between the modelled and reference sequences:

Chain	Residue	Modelled	Actual	Comment	Reference
B	998	MET	-	SEE REMARK 999	UNP Q8TBC4
B	999	LYS	-	SEE REMARK 999	UNP Q8TBC4
B	1000	LEU	-	SEE REMARK 999	UNP Q8TBC4
B	1001	MET	-	SEE REMARK 999	UNP Q8TBC4
B	1371	ALA	-	SEE REMARK 999	UNP Q8TBC4

- Molecule 3 is a protein called NEDD8-conjugating enzyme Ubc12.

Mol	Chain	Residues	Atoms					ZeroOcc	AltConf	Trace
3	C	176	Total	C	N	O	S	4	0	0
			1427	912	241	268	6			

There are 8 discrepancies between the modelled and reference sequences:

Chain	Residue	Modelled	Actual	Comment	Reference
C	-1	GLY	-	cloning artifact	UNP P61081
C	0	SER	-	cloning artifact	UNP P61081
C	?	-	SER	deletion	UNP P61081
C	?	-	ALA	deletion	UNP P61081
C	?	-	GLY	deletion	UNP P61081
C	?	-	GLY	deletion	UNP P61081
C	?	-	THR	deletion	UNP P61081
C	111	ALA	CYS	engineered mutation	UNP P61081

- Molecule 4 is a protein called NEDD8.

Mol	Chain	Residues	Atoms					ZeroOcc	AltConf	Trace
4	I	76	Total	C	N	O	S	0	0	0
			600	378	104	116	2			
4	J	76	Total	C	N	O	S	0	0	0
			599	378	104	115	2			

There are 10 discrepancies between the modelled and reference sequences:

Chain	Residue	Modelled	Actual	Comment	Reference
I	-4	GLY	-	cloning artifact	UNP Q15843
I	-3	SER	-	cloning artifact	UNP Q15843
I	-2	GLY	-	cloning artifact	UNP Q15843
I	-1	GLY	-	cloning artifact	UNP Q15843
I	0	SER	-	cloning artifact	UNP Q15843
J	-4	GLY	-	cloning artifact	UNP Q15843
J	-3	SER	-	cloning artifact	UNP Q15843
J	-2	GLY	-	cloning artifact	UNP Q15843
J	-1	GLY	-	cloning artifact	UNP Q15843
J	0	SER	-	cloning artifact	UNP Q15843

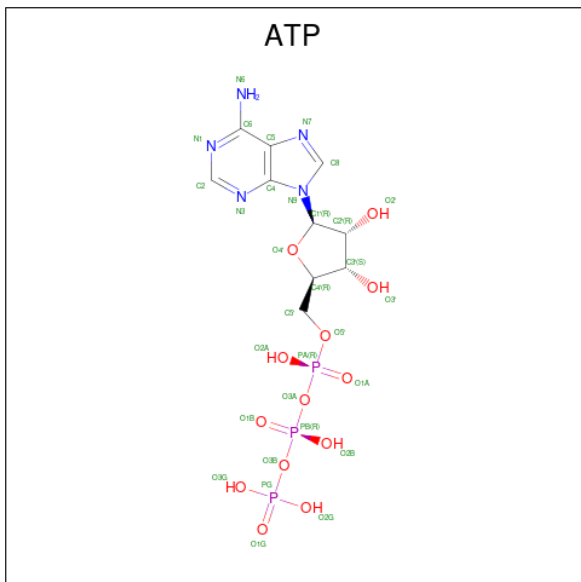
- Molecule 5 is MAGNESIUM ION (three-letter code: MG) (formula: Mg).

Mol	Chain	Residues	Atoms		ZeroOcc	AltConf
5	B	1	Total	Mg	0	0
			1	1		

- Molecule 6 is ZINC ION (three-letter code: ZN) (formula: Zn).

Mol	Chain	Residues	Atoms		ZeroOcc	AltConf
6	B	1	Total	Zn	0	0
			1	1		

- Molecule 7 is ADENOSINE-5'-TRIPHOSPHATE (three-letter code: ATP) (formula: $\text{C}_{10}\text{H}_{16}\text{N}_5\text{O}_{13}\text{P}_3$).



Mol	Chain	Residues	Atoms					ZeroOcc	AltConf
7	B	1	Total 31	C 10	N 5	O 13	P 3	0	0

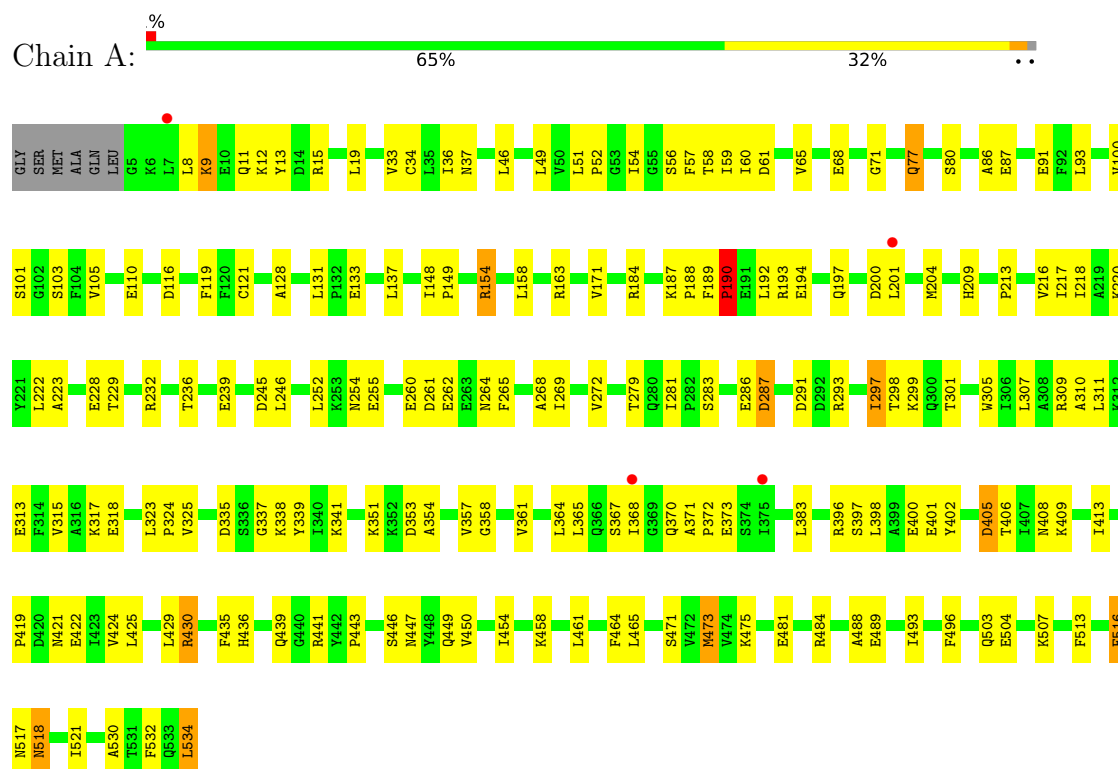
- Molecule 8 is water.

Mol	Chain	Residues	Atoms	ZeroOcc	AltConf
8	A	11	Total O 11 11	0	0
8	B	27	Total O 27 27	0	0
8	C	4	Total O 4 4	0	0
8	I	3	Total O 3 3	0	0

3 Residue-property plots

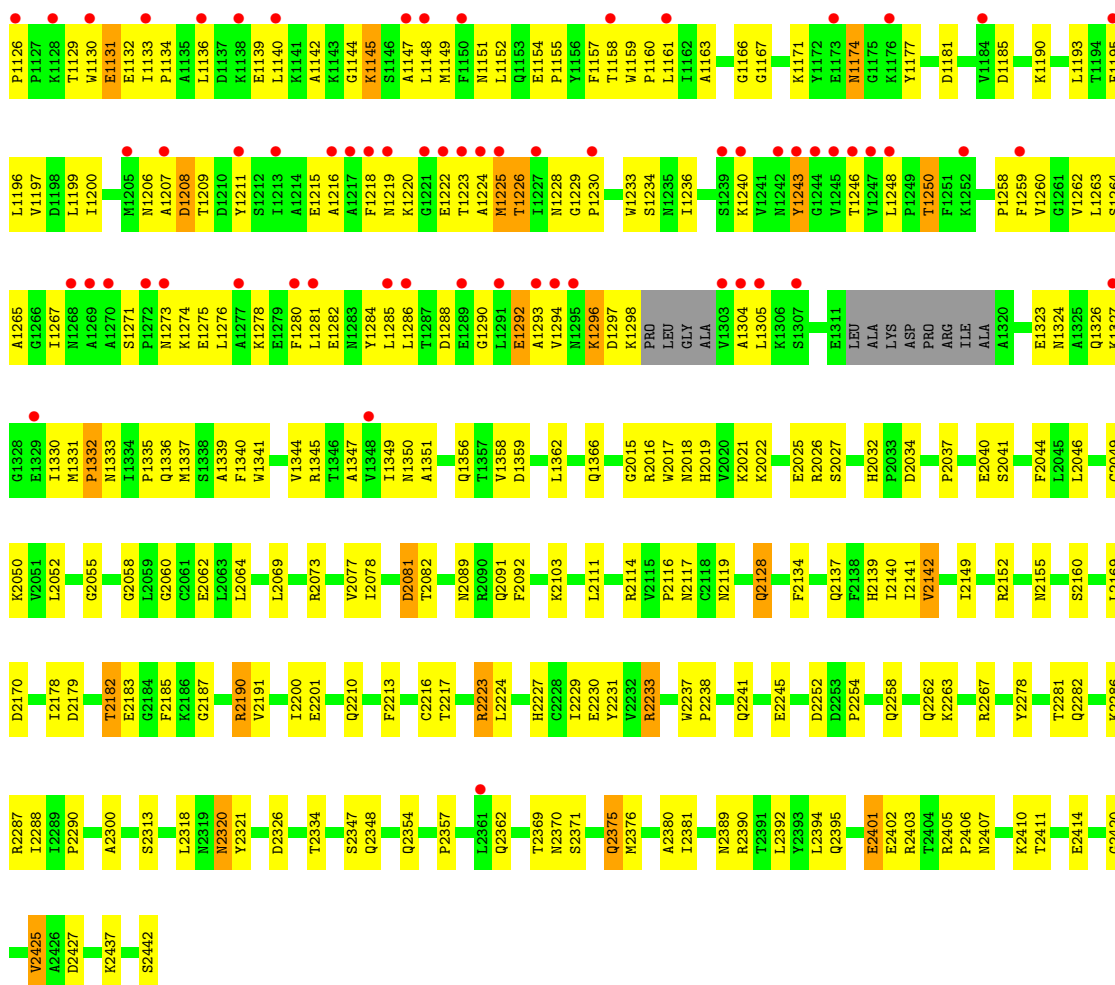
These plots are drawn for all protein, RNA, DNA and oligosaccharide chains in the entry. The first graphic for a chain summarises the proportions of the various outlier classes displayed in the second graphic. The second graphic shows the sequence view annotated by issues in geometry and electron density. Residues are color-coded according to the number of geometric quality criteria for which they contain at least one outlier: green = 0, yellow = 1, orange = 2 and red = 3 or more. A red dot above a residue indicates a poor fit to the electron density ($RSRZ > 2$). Stretches of 2 or more consecutive residues without any outlier are shown as a green connector. Residues present in the sample, but not in the model, are shown in grey.

- Molecule 1: NEDD8-activating enzyme E1 regulatory subunit

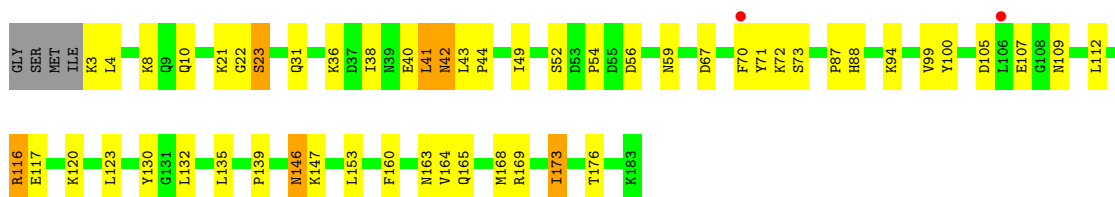


- Molecule 2: Maltose binding protein/NEDD8-activating enzyme E1 catalytic subunit chimera

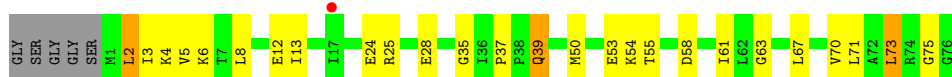




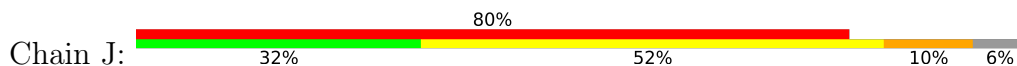
• Molecule 3: NEDD8-conjugating enzyme Ubc12

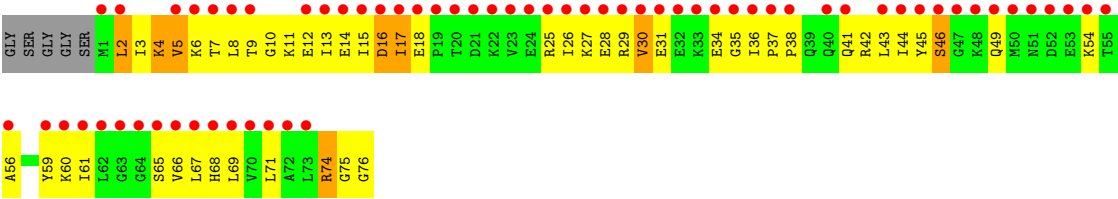


• Molecule 4: NEDD8



• Molecule 4: NEDD8





4 Data and refinement statistics

Property	Value	Source
Space group	P 32 2 1	Depositor
Cell constants a, b, c, α , β , γ	156.49Å 156.49Å 190.49Å 90.00° 90.00° 120.00°	Depositor
Resolution (Å)	50.00 – 2.80 49.47 – 2.70	Depositor EDS
% Data completeness (in resolution range)	98.6 (50.00-2.80) 95.6 (49.47-2.70)	Depositor EDS
R_{merge}	(Not available)	Depositor
R_{sym}	0.13	Depositor
$\langle I/\sigma(I) \rangle$ ¹	2.45 (at 2.69Å)	Xtriage
Refinement program	CNS	Depositor
R, R_{free}	0.241 , 0.274 0.236 , 0.235	Depositor DCC
R_{free} test set	3561 reflections (5.03%)	wwPDB-VP
Wilson B-factor (Å ²)	68.7	Xtriage
Anisotropy	0.476	Xtriage
Bulk solvent k_{sol} (e/Å ³), B_{sol} (Å ²)	0.31 , 47.9	EDS
L-test for twinning ²	$\langle L \rangle = 0.50$, $\langle L^2 \rangle = 0.33$	Xtriage
Estimated twinning fraction	0.015 for -h,-k,l	Xtriage
F_o, F_c correlation	0.93	EDS
Total number of atoms	13090	wwPDB-VP
Average B, all atoms (Å ²)	83.0	wwPDB-VP

Xtriage's analysis on translational NCS is as follows: *The largest off-origin peak in the Patterson function is 3.01% of the height of the origin peak. No significant pseudotranslation is detected.*

¹Intensities estimated from amplitudes.

²Theoretical values of $\langle |L| \rangle$, $\langle L^2 \rangle$ for acentric reflections are 0.5, 0.333 respectively for untwinned datasets, and 0.375, 0.2 for perfectly twinned datasets.

5 Model quality [i](#)

5.1 Standard geometry [i](#)

Bond lengths and bond angles in the following residue types are not validated in this section: ATP, MG, ZN

The Z score for a bond length (or angle) is the number of standard deviations the observed value is removed from the expected value. A bond length (or angle) with $|Z| > 5$ is considered an outlier worth inspection. RMSZ is the root-mean-square of all Z scores of the bond lengths (or angles).

Mol	Chain	Bond lengths		Bond angles	
		RMSZ	# Z >5	RMSZ	# Z >5
1	A	0.42	0/4294	0.64	1/5807 (0.0%)
2	B	0.43	0/6318	0.68	1/8586 (0.0%)
3	C	0.42	0/1458	0.64	1/1963 (0.1%)
4	I	0.44	0/605	0.75	1/808 (0.1%)
4	J	0.40	0/604	0.85	1/808 (0.1%)
All	All	0.42	0/13279	0.67	5/17972 (0.0%)

There are no bond length outliers.

All (5) bond angle outliers are listed below:

Mol	Chain	Res	Type	Atoms	Z	Observed(°)	Ideal(°)
4	I	73	LEU	CA-CB-CG	-6.81	99.63	115.30
1	A	534	LEU	N-CA-C	5.93	127.01	111.00
2	B	2320	ASN	N-CA-C	5.82	126.72	111.00
4	J	30	VAL	N-CA-C	-5.44	96.31	111.00
3	C	173	ILE	N-CA-C	-5.37	96.51	111.00

There are no chirality outliers.

There are no planarity outliers.

5.2 Too-close contacts [i](#)

In the following table, the Non-H and H(model) columns list the number of non-hydrogen atoms and hydrogen atoms in the chain respectively. The H(added) column lists the number of hydrogen atoms added and optimized by MolProbity. The Clashes column lists the number of clashes within the asymmetric unit, whereas Symm-Clashes lists symmetry-related clashes.

Mol	Chain	Non-H	H(model)	H(added)	Clashes	Symm-Clashes
1	A	4212	0	4160	159	0

Continued on next page...

Continued from previous page...

Mol	Chain	Non-H	H(model)	H(added)	Clashes	Symm-Clashes
2	B	6174	0	6117	281	0
3	C	1427	0	1427	35	0
4	I	600	0	638	27	0
4	J	599	0	638	77	0
5	B	1	0	0	0	0
6	B	1	0	0	0	0
7	B	31	0	12	5	0
8	A	11	0	0	0	0
8	B	27	0	0	0	0
8	C	4	0	0	0	0
8	I	3	0	0	0	0
All	All	13090	0	12992	554	0

The all-atom clashscore is defined as the number of clashes found per 1000 atoms (including hydrogen atoms). The all-atom clashscore for this structure is 21.

The worst 5 of 554 close contacts within the same asymmetric unit are listed below, sorted by their clash magnitude.

Atom-1	Atom-2	Interatomic distance (Å)	Clash overlap (Å)
4:J:15:ILE:HG23	4:J:29:ARG:HD2	1.24	1.10
1:A:46:LEU:HD23	1:A:93:LEU:HD13	1.27	1.09
4:J:5:VAL:HG22	4:J:13:ILE:HG22	1.42	1.01
4:J:31:GLU:HB2	4:J:36:ILE:O	1.66	0.95
1:A:297:ILE:HD13	1:A:297:ILE:H	1.28	0.95

There are no symmetry-related clashes.

5.3 Torsion angles ⓘ

5.3.1 Protein backbone ⓘ

In the following table, the Percentiles column shows the percent Ramachandran outliers of the chain as a percentile score with respect to all X-ray entries followed by that with respect to entries of similar resolution.

The Analysed column shows the number of residues for which the backbone conformation was analysed, and the total number of residues.

Mol	Chain	Analysed	Favoured	Allowed	Outliers	Percentiles
1	A	528/536 (98%)	476 (90%)	49 (9%)	3 (1%)	25 56

Continued on next page...

Continued from previous page...

Mol	Chain	Analysed	Favoured	Allowed	Outliers	Percentiles	
2	B	783/805 (97%)	709 (90%)	62 (8%)	12 (2%)	10	33
3	C	174/180 (97%)	165 (95%)	8 (5%)	1 (1%)	25	56
4	I	74/81 (91%)	71 (96%)	2 (3%)	1 (1%)	11	34
4	J	74/81 (91%)	54 (73%)	17 (23%)	3 (4%)	3	9
All	All	1633/1683 (97%)	1475 (90%)	138 (8%)	20 (1%)	13	39

5 of 20 Ramachandran outliers are listed below:

Mol	Chain	Res	Type
1	A	518	ASN
4	J	9	THR
4	J	46	SER
1	A	228	GLU
2	B	1017	GLY

5.3.2 Protein sidechains ⓘ

In the following table, the Percentiles column shows the percent sidechain outliers of the chain as a percentile score with respect to all X-ray entries followed by that with respect to entries of similar resolution.

The Analysed column shows the number of residues for which the sidechain conformation was analysed, and the total number of residues.

Mol	Chain	Analysed	Rotameric	Outliers	Percentiles	
1	A	461/465 (99%)	444 (96%)	17 (4%)	34	68
2	B	663/675 (98%)	619 (93%)	44 (7%)	16	44
3	C	160/163 (98%)	151 (94%)	9 (6%)	21	51
4	I	66/68 (97%)	62 (94%)	4 (6%)	18	48
4	J	66/68 (97%)	60 (91%)	6 (9%)	9	27
All	All	1416/1439 (98%)	1336 (94%)	80 (6%)	21	51

5 of 80 residues with a non-rotameric sidechain are listed below:

Mol	Chain	Res	Type
2	B	2390	ARG
4	I	25	ARG
2	B	2401	GLU
3	C	70	PHE

Continued on next page...

Continued from previous page...

Mol	Chain	Res	Type
4	J	4	LYS

Sometimes sidechains can be flipped to improve hydrogen bonding and reduce clashes. 5 of 43 such sidechains are listed below:

Mol	Chain	Res	Type
2	B	2270	GLN
2	B	2432	GLN
2	B	2272	ASN
2	B	2348	GLN
3	C	35	GLN

5.3.3 RNA [i](#)

There are no RNA molecules in this entry.

5.4 Non-standard residues in protein, DNA, RNA chains [i](#)

There are no non-standard protein/DNA/RNA residues in this entry.

5.5 Carbohydrates [i](#)

There are no monosaccharides in this entry.

5.6 Ligand geometry [i](#)

Of 3 ligands modelled in this entry, 2 are monoatomic - leaving 1 for Mogul analysis.

In the following table, the Counts columns list the number of bonds (or angles) for which Mogul statistics could be retrieved, the number of bonds (or angles) that are observed in the model and the number of bonds (or angles) that are defined in the Chemical Component Dictionary. The Link column lists molecule types, if any, to which the group is linked. The Z score for a bond length (or angle) is the number of standard deviations the observed value is removed from the expected value. A bond length (or angle) with $|Z| > 2$ is considered an outlier worth inspection. RMSZ is the root-mean-square of all Z scores of the bond lengths (or angles).

Mol	Type	Chain	Res	Link	Bond lengths			Bond angles		
					Counts	RMSZ	$\# Z > 2$	Counts	RMSZ	$\# Z > 2$
7	ATP	B	103	5	26,33,33	1.45	5 (19%)	31,52,52	1.76	5 (16%)

In the following table, the Chirals column lists the number of chiral outliers, the number of chiral centers analysed, the number of these observed in the model and the number defined in the Chemical Component Dictionary. Similar counts are reported in the Torsion and Rings columns. '-' means no outliers of that kind were identified.

Mol	Type	Chain	Res	Link	Chirals	Torsions	Rings
7	ATP	B	103	5	-	6/18/38/38	0/3/3/3

All (5) bond length outliers are listed below:

Mol	Chain	Res	Type	Atoms	Z	Observed(Å)	Ideal(Å)
7	B	103	ATP	C2-N3	3.60	1.37	1.32
7	B	103	ATP	C2-N1	2.61	1.38	1.33
7	B	103	ATP	C2'-C1'	-2.58	1.49	1.53
7	B	103	ATP	O2'-C2'	-2.52	1.37	1.43
7	B	103	ATP	C4-N3	2.25	1.38	1.35

All (5) bond angle outliers are listed below:

Mol	Chain	Res	Type	Atoms	Z	Observed(°)	Ideal(°)
7	B	103	ATP	N3-C2-N1	-5.83	119.57	128.68
7	B	103	ATP	C4-C5-N7	-3.77	105.47	109.40
7	B	103	ATP	C5-C6-N6	3.70	125.98	120.35
7	B	103	ATP	O2'-C2'-C3'	2.35	119.41	111.82
7	B	103	ATP	N6-C6-N1	-2.13	114.15	118.57

There are no chirality outliers.

5 of 6 torsion outliers are listed below:

Mol	Chain	Res	Type	Atoms
7	B	103	ATP	C5'-O5'-PA-O1A
7	B	103	ATP	C5'-O5'-PA-O2A
7	B	103	ATP	PB-O3A-PA-O1A
7	B	103	ATP	PB-O3A-PA-O2A
7	B	103	ATP	O4'-C4'-C5'-O5'

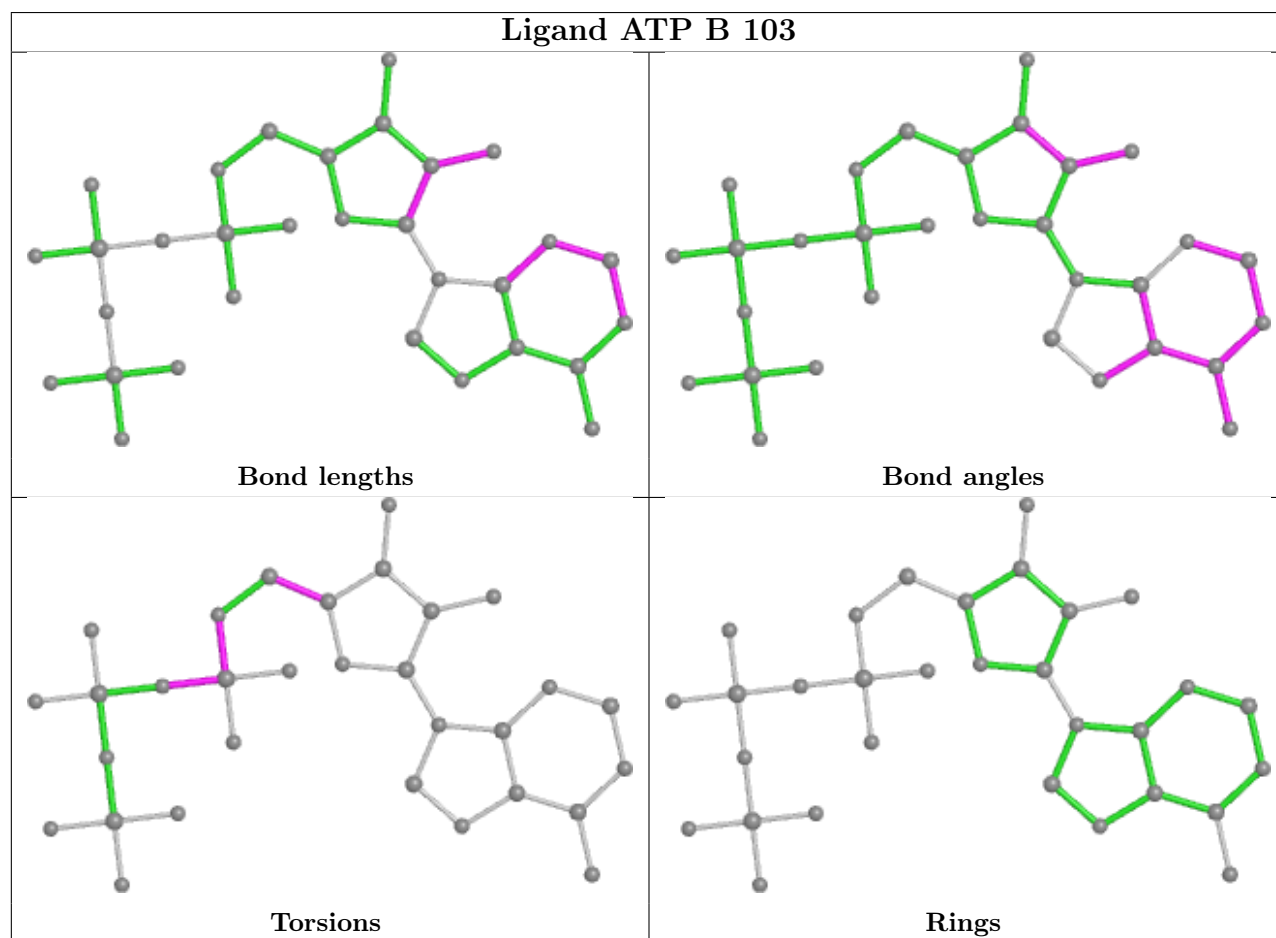
There are no ring outliers.

1 monomer is involved in 5 short contacts:

Mol	Chain	Res	Type	Clashes	Symm-Clashes
7	B	103	ATP	5	0

The following is a two-dimensional graphical depiction of Mogul quality analysis of bond lengths,

bond angles, torsion angles, and ring geometry for all instances of the Ligand of Interest. In addition, ligands with molecular weight > 250 and outliers as shown on the validation Tables will also be included. For torsion angles, if less than 5% of the Mogul distribution of torsion angles is within 10 degrees of the torsion angle in question, then that torsion angle is considered an outlier. Any bond that is central to one or more torsion angles identified as an outlier by Mogul will be highlighted in the graph. For rings, the root-mean-square deviation (RMSD) between the ring in question and similar rings identified by Mogul is calculated over all ring torsion angles. If the average RMSD is greater than 60 degrees and the minimal RMSD between the ring in question and any Mogul-identified rings is also greater than 60 degrees, then that ring is considered an outlier. The outliers are highlighted in purple. The color gray indicates Mogul did not find sufficient equivalents in the CSD to analyse the geometry.



5.7 Other polymers [i](#)

There are no such residues in this entry.

5.8 Polymer linkage issues [i](#)

There are no chain breaks in this entry.

6 Fit of model and data [i](#)

6.1 Protein, DNA and RNA chains [i](#)

In the following table, the column labelled ‘#RSRZ > 2’ contains the number (and percentage) of RSRZ outliers, followed by percent RSRZ outliers for the chain as percentile scores relative to all X-ray entries and entries of similar resolution. The OWAB column contains the minimum, median, 95th percentile and maximum values of the occupancy-weighted average B-factor per residue. The column labelled ‘Q < 0.9’ lists the number of (and percentage) of residues with an average occupancy less than 0.9.

Mol	Chain	Analysed	<RSRZ>	#RSRZ>2	OWAB(Å ²)	Q<0.9
1	A	530/536 (98%)	0.11	4 (0%) 86 81	42, 72, 111, 142	0
2	B	789/805 (98%)	0.80	125 (15%) 2 1	37, 77, 145, 150	0
3	C	176/180 (97%)	0.03	2 (1%) 80 75	48, 75, 96, 104	2 (1%)
4	I	76/81 (93%)	0.14	1 (1%) 77 72	43, 73, 92, 100	0
4	J	76/81 (93%)	4.80	65 (85%) 0 0	95, 142, 149, 150	0
All	All	1647/1683 (97%)	0.65	197 (11%) 4 2	37, 76, 142, 150	2 (0%)

The worst 5 of 197 RSRZ outliers are listed below:

Mol	Chain	Res	Type	RSRZ
4	J	53	GLU	11.2
2	B	1062	PHE	10.8
4	J	21	ASP	10.7
4	J	20	THR	10.7
4	J	67	LEU	10.6

6.2 Non-standard residues in protein, DNA, RNA chains [i](#)

There are no non-standard protein/DNA/RNA residues in this entry.

6.3 Carbohydrates [i](#)

There are no monosaccharides in this entry.

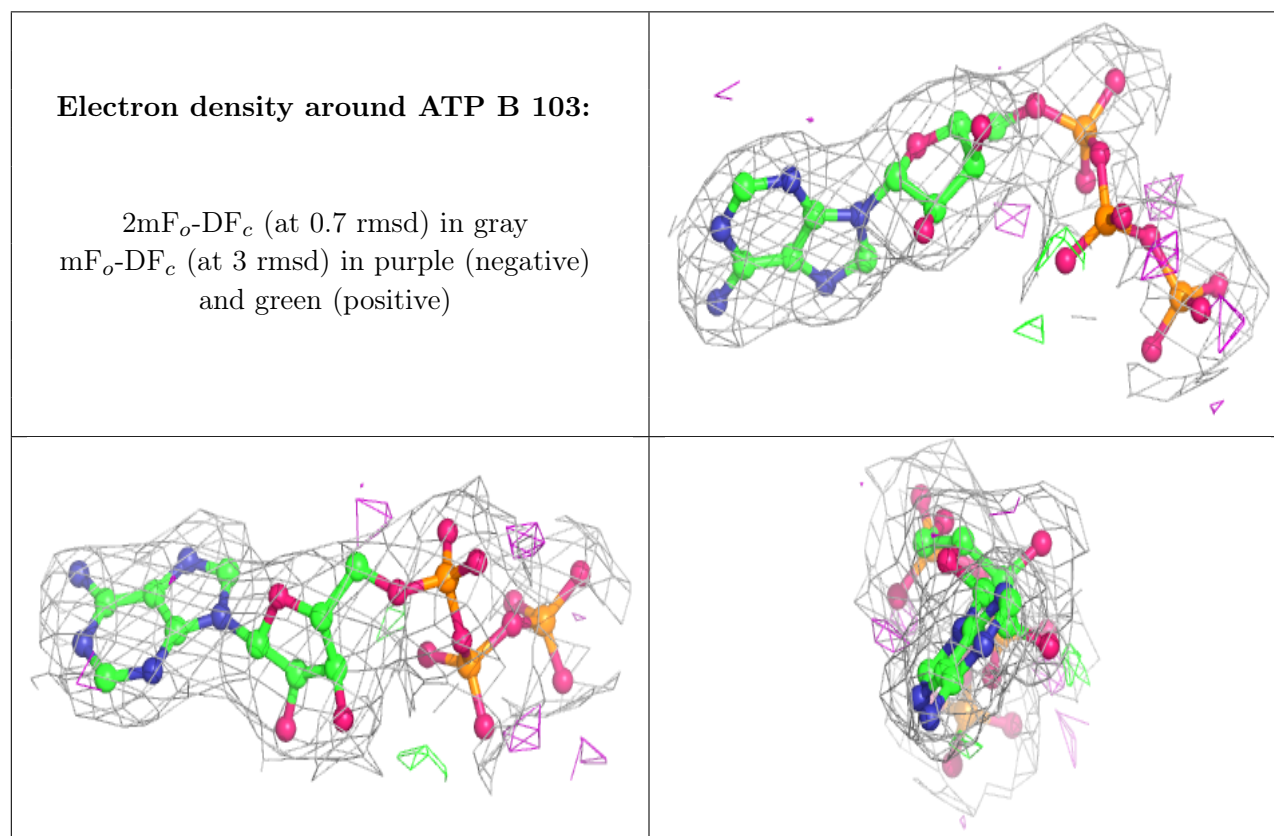
6.4 Ligands [i](#)

In the following table, the Atoms column lists the number of modelled atoms in the group and the number defined in the chemical component dictionary. The B-factors column lists the minimum,

median, 95th percentile and maximum values of B factors of atoms in the group. The column labelled 'Q< 0.9' lists the number of atoms with occupancy less than 0.9.

Mol	Type	Chain	Res	Atoms	RSCC	RSR	B-factors(Å ²)	Q<0.9
5	MG	B	101	1/1	0.91	0.28	68,68,68,68	0
6	ZN	B	102	1/1	0.97	0.27	61,61,61,61	0
7	ATP	B	103	31/31	0.97	0.23	60,62,70,73	0

The following is a graphical depiction of the model fit to experimental electron density of all instances of the Ligand of Interest. In addition, ligands with molecular weight > 250 and outliers as shown on the geometry validation Tables will also be included. Each fit is shown from different orientation to approximate a three-dimensional view.



6.5 Other polymers ⓘ

There are no such residues in this entry.