



Full wwPDB X-ray Structure Validation Report ⓘ

May 16, 2020 – 02:19 am BST

PDB ID : 5NWN
Title : Deinococcus radiodurans BphP PAS-GAF-PHY Y263F mutant, dark
Authors : Takala, H.; Westehoff, S.; Ihalainen, J.A.
Deposited on : 2017-05-07
Resolution : 3.60 Å(reported)

This is a Full wwPDB X-ray Structure Validation Report for a publicly released PDB entry.

We welcome your comments at validation@mail.wwpdb.org

A user guide is available at

<https://www.wwpdb.org/validation/2017/XrayValidationReportHelp>

with specific help available everywhere you see the ⓘ symbol.

The following versions of software and data (see [references ⓘ](#)) were used in the production of this report:

MolProbity : 4.02b-467
Mogul : 1.8.5 (274361), CSD as541be (2020)
Xtriage (Phenix) : 1.13
EDS : 2.11
buster-report : 1.1.7 (2018)
Percentile statistics : 20191225.v01 (using entries in the PDB archive December 25th 2019)
Refmac : 5.8.0158
CCP4 : 7.0.044 (Gargrove)
Ideal geometry (proteins) : Engh & Huber (2001)
Ideal geometry (DNA, RNA) : Parkinson et al. (1996)
Validation Pipeline (wwPDB-VP) : 2.11

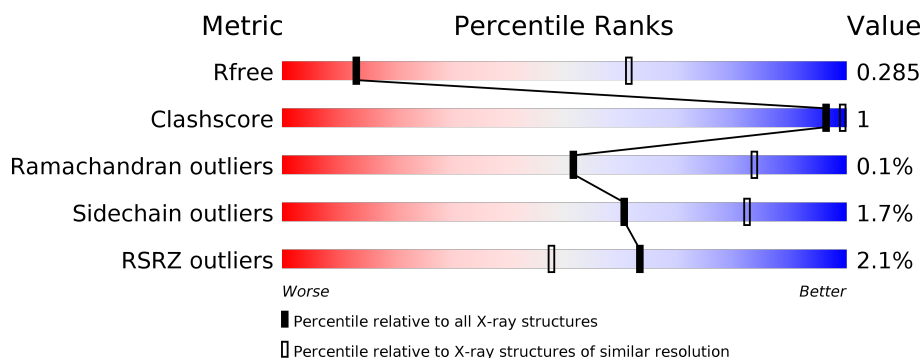
1 Overall quality at a glance

The following experimental techniques were used to determine the structure:

X-RAY DIFFRACTION

The reported resolution of this entry is 3.60 Å.

Percentile scores (ranging between 0-100) for global validation metrics of the entry are shown in the following graphic. The table shows the number of entries on which the scores are based.



Metric	Whole archive (#Entries)	Similar resolution (#Entries, resolution range(Å))
R_{free}	130704	1257 (3.70-3.50)
Clashscore	141614	1353 (3.70-3.50)
Ramachandran outliers	138981	1307 (3.70-3.50)
Sidechain outliers	138945	1307 (3.70-3.50)
RSRZ outliers	127900	1161 (3.70-3.50)

The table below summarises the geometric issues observed across the polymeric chains and their fit to the electron density. The red, orange, yellow and green segments on the lower bar indicate the fraction of residues that contain outliers for ≥ 3 , 2, 1 and 0 types of geometric quality criteria respectively. A grey segment represents the fraction of residues that are not modelled. The numeric value for each fraction is indicated below the corresponding segment, with a dot representing fractions $\leq 5\%$. The upper red bar (where present) indicates the fraction of residues that have poor fit to the electron density. The numeric value is given above the bar.

Mol	Chain	Length	Quality of chain
1	A	523	<div> <div style="width: 100%; height: 10px; background-color: red;"></div> <div style="width: 88%; height: 10px; background-color: green;"></div> <div style="width: 9%; height: 10px; background-color: yellow;"></div> <div style="width: 1%; height: 10px; background-color: grey;"></div> <div style="position: absolute; left: 88%; top: -10px;">88%</div> <div style="position: absolute; left: 94%; top: -10px;">9%</div> </div>
1	B	523	<div> <div style="width: 100%; height: 10px; background-color: red;"></div> <div style="width: 88%; height: 10px; background-color: green;"></div> <div style="width: 9%; height: 10px; background-color: yellow;"></div> <div style="width: 1%; height: 10px; background-color: grey;"></div> <div style="position: absolute; left: 88%; top: -10px;">88%</div> <div style="position: absolute; left: 94%; top: -10px;">9%</div> </div>
1	C	523	<div> <div style="width: 3%; height: 10px; background-color: red;"></div> <div style="width: 87%; height: 10px; background-color: green;"></div> <div style="width: 10%; height: 10px; background-color: yellow;"></div> <div style="width: 0%; height: 10px; background-color: grey;"></div> <div style="position: absolute; left: 3%; top: -10px;">3%</div> <div style="position: absolute; left: 87%; top: -10px;">87%</div> <div style="position: absolute; left: 94%; top: -10px;">10%</div> </div>
1	D	523	<div> <div style="width: 3%; height: 10px; background-color: red;"></div> <div style="width: 87%; height: 10px; background-color: green;"></div> <div style="width: 10%; height: 10px; background-color: yellow;"></div> <div style="width: 0%; height: 10px; background-color: grey;"></div> <div style="position: absolute; left: 3%; top: -10px;">3%</div> <div style="position: absolute; left: 87%; top: -10px;">87%</div> <div style="position: absolute; left: 94%; top: -10px;">10%</div> </div>

The following table lists non-polymeric compounds, carbohydrate monomers and non-standard residues in protein, DNA, RNA chains that are outliers for geometric or electron-density-fit crite-

ria:

Mol	Type	Chain	Res	Chirality	Geometry	Clashes	Electron density
2	LBV	C	600	-	-	-	X
2	LBV	D	600	-	-	-	X

2 Entry composition

There are 2 unique types of molecules in this entry. The entry contains 14615 atoms, of which 0 are hydrogens and 0 are deuteriums.

In the tables below, the ZeroOcc column contains the number of atoms modelled with zero occupancy, the AltConf column contains the number of residues with at least one atom in alternate conformation and the Trace column contains the number of residues modelled with at most 2 atoms.

- Molecule 1 is a protein called Bacteriophytochrome.

Mol	Chain	Residues	Atoms					ZeroOcc	AltConf	Trace
1	A	478	Total	C	N	O	S	0	0	0
			3647	2322	644	670	11			
1	B	475	Total	C	N	O	S	0	0	0
			3629	2311	641	666	11			
1	C	469	Total	C	N	O	S	0	0	0
			3585	2283	635	656	11			
1	D	469	Total	C	N	O	S	0	0	0
			3582	2283	632	656	11			

There are 88 discrepancies between the modelled and reference sequences:

Chain	Residue	Modelled	Actual	Comment	Reference
A	-13	MET	-	initiating methionine	UNP Q9RZA4
A	-12	ALA	-	expression tag	UNP Q9RZA4
A	-11	SER	-	expression tag	UNP Q9RZA4
A	-10	MET	-	expression tag	UNP Q9RZA4
A	-9	THR	-	expression tag	UNP Q9RZA4
A	-8	GLY	-	expression tag	UNP Q9RZA4
A	-7	GLY	-	expression tag	UNP Q9RZA4
A	-6	GLN	-	expression tag	UNP Q9RZA4
A	-5	GLN	-	expression tag	UNP Q9RZA4
A	-4	MET	-	expression tag	UNP Q9RZA4
A	-3	GLY	-	expression tag	UNP Q9RZA4
A	-2	ARG	-	expression tag	UNP Q9RZA4
A	-1	GLY	-	expression tag	UNP Q9RZA4
A	0	SER	-	expression tag	UNP Q9RZA4
A	263	PHE	TYR	engineered mutation	UNP Q9RZA4
A	503	GLU	-	expression tag	UNP Q9RZA4
A	504	HIS	-	expression tag	UNP Q9RZA4
A	505	HIS	-	expression tag	UNP Q9RZA4
A	506	HIS	-	expression tag	UNP Q9RZA4
A	507	HIS	-	expression tag	UNP Q9RZA4
A	508	HIS	-	expression tag	UNP Q9RZA4

Continued on next page...

Continued from previous page...

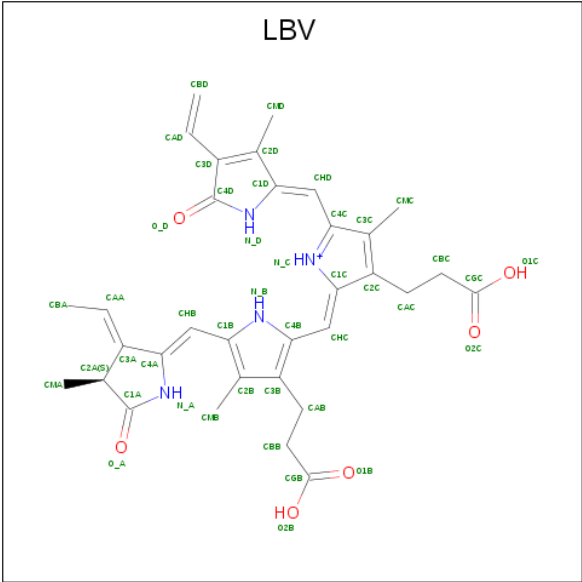
Chain	Residue	Modelled	Actual	Comment	Reference
A	509	HIS	-	expression tag	UNP Q9RZA4
B	-13	MET	-	initiating methionine	UNP Q9RZA4
B	-12	ALA	-	expression tag	UNP Q9RZA4
B	-11	SER	-	expression tag	UNP Q9RZA4
B	-10	MET	-	expression tag	UNP Q9RZA4
B	-9	THR	-	expression tag	UNP Q9RZA4
B	-8	GLY	-	expression tag	UNP Q9RZA4
B	-7	GLY	-	expression tag	UNP Q9RZA4
B	-6	GLN	-	expression tag	UNP Q9RZA4
B	-5	GLN	-	expression tag	UNP Q9RZA4
B	-4	MET	-	expression tag	UNP Q9RZA4
B	-3	GLY	-	expression tag	UNP Q9RZA4
B	-2	ARG	-	expression tag	UNP Q9RZA4
B	-1	GLY	-	expression tag	UNP Q9RZA4
B	0	SER	-	expression tag	UNP Q9RZA4
B	263	PHE	TYR	engineered mutation	UNP Q9RZA4
B	503	GLU	-	expression tag	UNP Q9RZA4
B	504	HIS	-	expression tag	UNP Q9RZA4
B	505	HIS	-	expression tag	UNP Q9RZA4
B	506	HIS	-	expression tag	UNP Q9RZA4
B	507	HIS	-	expression tag	UNP Q9RZA4
B	508	HIS	-	expression tag	UNP Q9RZA4
B	509	HIS	-	expression tag	UNP Q9RZA4
C	-13	MET	-	initiating methionine	UNP Q9RZA4
C	-12	ALA	-	expression tag	UNP Q9RZA4
C	-11	SER	-	expression tag	UNP Q9RZA4
C	-10	MET	-	expression tag	UNP Q9RZA4
C	-9	THR	-	expression tag	UNP Q9RZA4
C	-8	GLY	-	expression tag	UNP Q9RZA4
C	-7	GLY	-	expression tag	UNP Q9RZA4
C	-6	GLN	-	expression tag	UNP Q9RZA4
C	-5	GLN	-	expression tag	UNP Q9RZA4
C	-4	MET	-	expression tag	UNP Q9RZA4
C	-3	GLY	-	expression tag	UNP Q9RZA4
C	-2	ARG	-	expression tag	UNP Q9RZA4
C	-1	GLY	-	expression tag	UNP Q9RZA4
C	0	SER	-	expression tag	UNP Q9RZA4
C	263	PHE	TYR	engineered mutation	UNP Q9RZA4
C	503	GLU	-	expression tag	UNP Q9RZA4
C	504	HIS	-	expression tag	UNP Q9RZA4
C	505	HIS	-	expression tag	UNP Q9RZA4
C	506	HIS	-	expression tag	UNP Q9RZA4

Continued on next page...

Continued from previous page...

Chain	Residue	Modelled	Actual	Comment	Reference
C	507	HIS	-	expression tag	UNP Q9RZA4
C	508	HIS	-	expression tag	UNP Q9RZA4
C	509	HIS	-	expression tag	UNP Q9RZA4
D	-13	MET	-	initiating methionine	UNP Q9RZA4
D	-12	ALA	-	expression tag	UNP Q9RZA4
D	-11	SER	-	expression tag	UNP Q9RZA4
D	-10	MET	-	expression tag	UNP Q9RZA4
D	-9	THR	-	expression tag	UNP Q9RZA4
D	-8	GLY	-	expression tag	UNP Q9RZA4
D	-7	GLY	-	expression tag	UNP Q9RZA4
D	-6	GLN	-	expression tag	UNP Q9RZA4
D	-5	GLN	-	expression tag	UNP Q9RZA4
D	-4	MET	-	expression tag	UNP Q9RZA4
D	-3	GLY	-	expression tag	UNP Q9RZA4
D	-2	ARG	-	expression tag	UNP Q9RZA4
D	-1	GLY	-	expression tag	UNP Q9RZA4
D	0	SER	-	expression tag	UNP Q9RZA4
D	263	PHE	TYR	engineered mutation	UNP Q9RZA4
D	503	GLU	-	expression tag	UNP Q9RZA4
D	504	HIS	-	expression tag	UNP Q9RZA4
D	505	HIS	-	expression tag	UNP Q9RZA4
D	506	HIS	-	expression tag	UNP Q9RZA4
D	507	HIS	-	expression tag	UNP Q9RZA4
D	508	HIS	-	expression tag	UNP Q9RZA4
D	509	HIS	-	expression tag	UNP Q9RZA4

- Molecule 2 is 3-[2-[(Z)-[3-(2-carboxyethyl)-5-[(Z)-(4-ethenyl-3-methyl-5-oxidanylidene-pyrro-
l-2-ylidene)methyl]-4-methyl-pyrrol-1-ium-2-ylidene]methyl]-5-[(Z)-[(3E)-3-ethylidene-4-m
ethyl-5-oxidanylidene-pyrrolidin-2-ylidene]methyl]-4-methyl-1H-pyrrol-3-yl]propanoic acid
(three-letter code: LBV) (formula: C₃₃H₃₇N₄O₆).

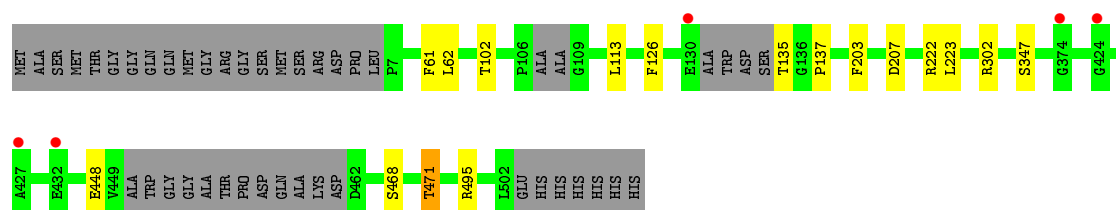
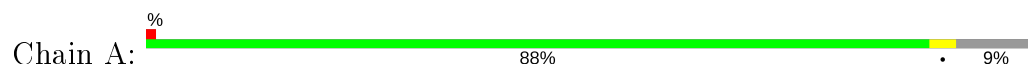


Mol	Chain	Residues	Atoms				ZeroOcc	AltConf
2	A	1	Total	C	N	O	0	0
			43	33	4	6		
2	B	1	Total	C	N	O	0	0
			43	33	4	6		
2	C	1	Total	C	N	O	0	0
			43	33	4	6		
2	D	1	Total	C	N	O	0	0
			43	33	4	6		

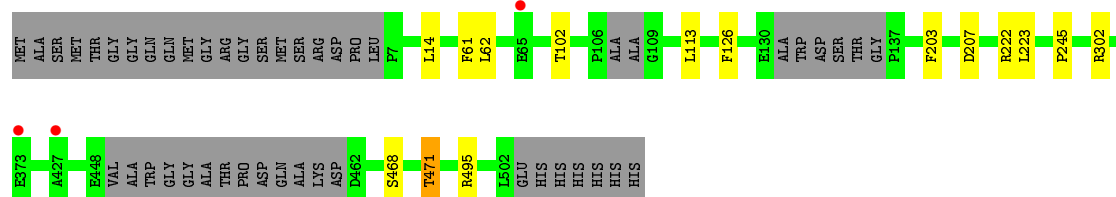
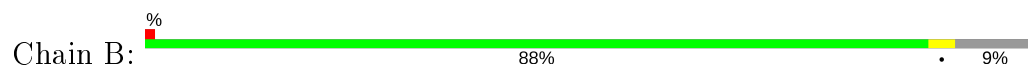
3 Residue-property plots [i](#)

These plots are drawn for all protein, RNA and DNA chains in the entry. The first graphic for a chain summarises the proportions of the various outlier classes displayed in the second graphic. The second graphic shows the sequence view annotated by issues in geometry and electron density. Residues are color-coded according to the number of geometric quality criteria for which they contain at least one outlier: green = 0, yellow = 1, orange = 2 and red = 3 or more. A red dot above a residue indicates a poor fit to the electron density ($RSRZ > 2$). Stretches of 2 or more consecutive residues without any outlier are shown as a green connector. Residues present in the sample, but not in the model, are shown in grey.

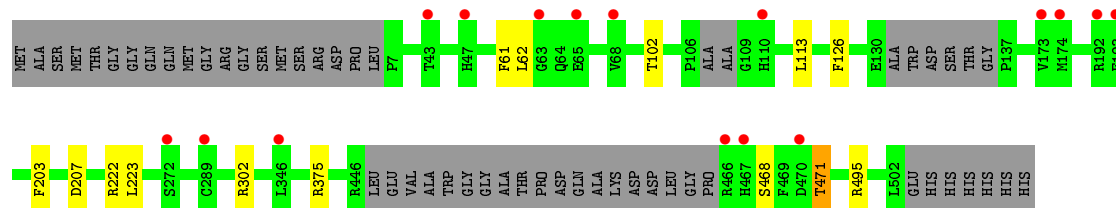
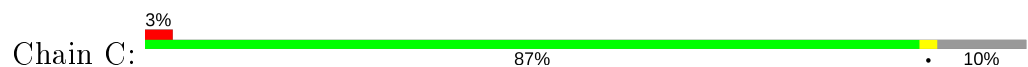
- Molecule 1: Bacteriophytochrome



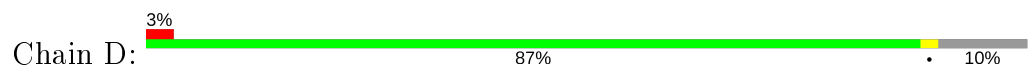
- Molecule 1: Bacteriophytochrome

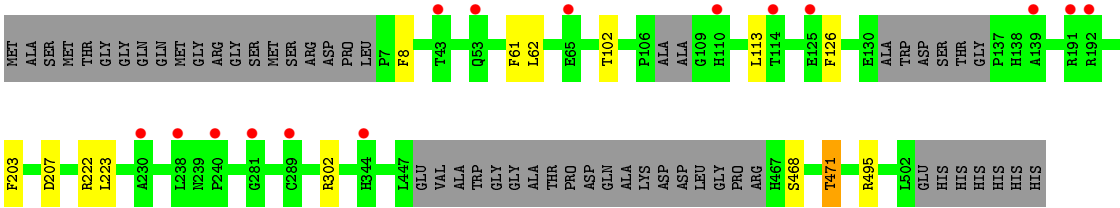


- Molecule 1: Bacteriophytochrome



- Molecule 1: Bacteriophytochrome





4 Data and refinement statistics

Property	Value	Source
Space group	P 21 21 21	Depositor
Cell constants a, b, c, α , β , γ	84.11Å 197.12Å 214.11Å 90.00° 90.00° 90.00°	Depositor
Resolution (Å)	19.94 – 3.60 19.94 – 3.60	Depositor EDS
% Data completeness (in resolution range)	96.7 (19.94-3.60) 97.4 (19.94-3.60)	Depositor EDS
R_{merge}	0.07	Depositor
R_{sym}	(Not available)	Depositor
$\langle I/\sigma(I) \rangle$ ¹	1.29 (at 3.62Å)	Xtriage
Refinement program	REFMAC 5.8.0135	Depositor
R, R_{free}	0.247 , 0.287 0.247 , 0.285	Depositor DCC
R_{free} test set	2037 reflections (5.00%)	wwPDB-VP
Wilson B-factor (Å ²)	164.2	Xtriage
Anisotropy	0.059	Xtriage
Bulk solvent k_{sol} (e/Å ³), B_{sol} (Å ²)	0.28 , 132.6	EDS
L-test for twinning ²	$\langle L \rangle = 0.46$, $\langle L^2 \rangle = 0.29$	Xtriage
Estimated twinning fraction	No twinning to report.	Xtriage
F_o, F_c correlation	0.95	EDS
Total number of atoms	14615	wwPDB-VP
Average B, all atoms (Å ²)	197.0	wwPDB-VP

Xtriage's analysis on translational NCS is as follows: *The largest off-origin peak in the Patterson function is 3.19% of the height of the origin peak. No significant pseudotranslation is detected.*

¹Intensities estimated from amplitudes.

²Theoretical values of $\langle |L| \rangle$, $\langle L^2 \rangle$ for acentric reflections are 0.5, 0.333 respectively for untwinned datasets, and 0.375, 0.2 for perfectly twinned datasets.

5 Model quality [i](#)

5.1 Standard geometry [i](#)

Bond lengths and bond angles in the following residue types are not validated in this section: LBV

The Z score for a bond length (or angle) is the number of standard deviations the observed value is removed from the expected value. A bond length (or angle) with $|Z| > 5$ is considered an outlier worth inspection. RMSZ is the root-mean-square of all Z scores of the bond lengths (or angles).

Mol	Chain	Bond lengths		Bond angles	
		RMSZ	# $ Z > 5$	RMSZ	# $ Z > 5$
1	A	0.36	0/3741	0.63	0/5117
1	B	0.36	0/3723	0.63	0/5091
1	C	0.36	0/3678	0.62	0/5029
1	D	0.36	0/3675	0.62	0/5026
All	All	0.36	0/14817	0.62	0/20263

There are no bond length outliers.

There are no bond angle outliers.

There are no chirality outliers.

There are no planarity outliers.

5.2 Too-close contacts [i](#)

In the following table, the Non-H and H(model) columns list the number of non-hydrogen atoms and hydrogen atoms in the chain respectively. The H(added) column lists the number of hydrogen atoms added and optimized by MolProbity. The Clashes column lists the number of clashes within the asymmetric unit, whereas Symm-Clashes lists symmetry related clashes.

Mol	Chain	Non-H	H(model)	H(added)	Clashes	Symm-Clashes
1	A	3647	0	3620	6	0
1	B	3629	0	3602	8	0
1	C	3585	0	3560	8	0
1	D	3582	0	3558	6	0
2	A	43	0	34	2	0
2	B	43	0	34	2	0
2	C	43	0	34	2	0
2	D	43	0	34	2	0
All	All	14615	0	14476	28	0

The all-atom clashscore is defined as the number of clashes found per 1000 atoms (including hydrogen atoms). The all-atom clashscore for this structure is 1.

All (28) close contacts within the same asymmetric unit are listed below, sorted by their clash magnitude.

Atom-1	Atom-2	Interatomic distance (Å)	Clash overlap (Å)
1:B:245:PRO:HD3	1:C:375:ARG:NH2	2.18	0.59
1:B:14:LEU:HD13	1:C:375:ARG:NE	2.22	0.53
1:B:62:LEU:HD21	1:B:126:PHE:CD2	2.47	0.49
1:D:62:LEU:HD21	1:D:126:PHE:CD2	2.48	0.49
1:B:113:LEU:HD13	1:B:126:PHE:HE1	1.78	0.49
1:D:113:LEU:HD13	1:D:126:PHE:HE1	1.78	0.48
1:A:62:LEU:HD21	1:A:126:PHE:CD2	2.48	0.48
1:B:468:SER:HA	1:B:471:THR:HG22	1.95	0.48
1:A:113:LEU:HD13	1:A:126:PHE:HE1	1.78	0.48
1:C:113:LEU:HD13	1:C:126:PHE:HE1	1.78	0.48
1:C:62:LEU:HD21	1:C:126:PHE:CD2	2.48	0.48
1:C:468:SER:HA	1:C:471:THR:HG22	1.96	0.48
1:A:468:SER:HA	1:A:471:THR:HG22	1.95	0.47
1:D:468:SER:HA	1:D:471:THR:HG22	1.95	0.46
2:A:600:LBV:HMA1	2:A:600:LBV:HBA2	1.99	0.45
2:C:600:LBV:HMA1	2:C:600:LBV:HBA2	1.99	0.44
1:D:203:PHE:CG	2:D:600:LBV:HMD1	2.53	0.44
1:A:203:PHE:CG	2:A:600:LBV:HMD1	2.52	0.44
1:B:203:PHE:CG	2:B:600:LBV:HMD1	2.53	0.44
1:C:203:PHE:CG	2:C:600:LBV:HMD1	2.53	0.44
2:B:600:LBV:HBA2	2:B:600:LBV:HMA1	1.99	0.43
1:A:223:LEU:HD23	1:A:302:ARG:HD3	1.99	0.43
2:D:600:LBV:HMA1	2:D:600:LBV:HBA2	1.99	0.43
1:B:223:LEU:HD23	1:B:302:ARG:HD3	2.00	0.43
1:D:223:LEU:HD23	1:D:302:ARG:HD3	2.00	0.42
1:C:223:LEU:HD23	1:C:302:ARG:HD3	2.00	0.42
1:A:347:SER:OG	1:D:8:PHE:HB2	2.20	0.41
1:B:245:PRO:HD3	1:C:375:ARG:HH22	1.86	0.41

There are no symmetry-related clashes.

5.3 Torsion angles ⓘ

5.3.1 Protein backbone ⓘ

In the following table, the Percentiles column shows the percent Ramachandran outliers of the chain as a percentile score with respect to all X-ray entries followed by that with respect to entries

of similar resolution.

The Analysed column shows the number of residues for which the backbone conformation was analysed, and the total number of residues.

Mol	Chain	Analysed	Favoured	Allowed	Outliers	Percentiles	
1	A	470/523 (90%)	444 (94%)	25 (5%)	1 (0%)	47	79
1	B	467/523 (89%)	442 (95%)	25 (5%)	0	100	100
1	C	461/523 (88%)	437 (95%)	24 (5%)	0	100	100
1	D	461/523 (88%)	436 (95%)	25 (5%)	0	100	100
All	All	1859/2092 (89%)	1759 (95%)	99 (5%)	1 (0%)	51	83

All (1) Ramachandran outliers are listed below:

Mol	Chain	Res	Type
1	A	137	PRO

5.3.2 Protein sidechains ⓘ

In the following table, the Percentiles column shows the percent sidechain outliers of the chain as a percentile score with respect to all X-ray entries followed by that with respect to entries of similar resolution.

The Analysed column shows the number of residues for which the sidechain conformation was analysed, and the total number of residues.

Mol	Chain	Analysed	Rotameric	Outliers	Percentiles	
1	A	378/410 (92%)	370 (98%)	8 (2%)	53	78
1	B	376/410 (92%)	370 (98%)	6 (2%)	62	83
1	C	371/410 (90%)	365 (98%)	6 (2%)	62	83
1	D	371/410 (90%)	365 (98%)	6 (2%)	62	83
All	All	1496/1640 (91%)	1470 (98%)	26 (2%)	60	82

All (26) residues with a non-rotameric sidechain are listed below:

Mol	Chain	Res	Type
1	A	61	PHE
1	A	102	THR
1	A	135	THR
1	A	207	ASP
1	A	222	ARG

Continued on next page...

Continued from previous page...

Mol	Chain	Res	Type
1	A	448	GLU
1	A	471	THR
1	A	495	ARG
1	B	61	PHE
1	B	102	THR
1	B	207	ASP
1	B	222	ARG
1	B	471	THR
1	B	495	ARG
1	C	61	PHE
1	C	102	THR
1	C	207	ASP
1	C	222	ARG
1	C	471	THR
1	C	495	ARG
1	D	61	PHE
1	D	102	THR
1	D	207	ASP
1	D	222	ARG
1	D	471	THR
1	D	495	ARG

Some sidechains can be flipped to improve hydrogen bonding and reduce clashes. All (8) such sidechains are listed below:

Mol	Chain	Res	Type
1	A	290	HIS
1	A	335	HIS
1	B	290	HIS
1	B	335	HIS
1	C	290	HIS
1	C	335	HIS
1	D	290	HIS
1	D	335	HIS

5.3.3 RNA ⓘ

There are no RNA molecules in this entry.

5.4 Non-standard residues in protein, DNA, RNA chains ⓘ

There are no non-standard protein/DNA/RNA residues in this entry.

5.5 Carbohydrates ⓘ

There are no carbohydrates in this entry.

5.6 Ligand geometry ⓘ

4 ligands are modelled in this entry.

In the following table, the Counts columns list the number of bonds (or angles) for which Mogul statistics could be retrieved, the number of bonds (or angles) that are observed in the model and the number of bonds (or angles) that are defined in the Chemical Component Dictionary. The Link column lists molecule types, if any, to which the group is linked. The Z score for a bond length (or angle) is the number of standard deviations the observed value is removed from the expected value. A bond length (or angle) with $|Z| > 2$ is considered an outlier worth inspection. RMSZ is the root-mean-square of all Z scores of the bond lengths (or angles).

Mol	Type	Chain	Res	Link	Bond lengths			Bond angles		
					Counts	RMSZ	$\# Z > 2$	Counts	RMSZ	$\# Z > 2$
2	LBV	A	600	1	36,46,46	2.88	16 (44%)	41,67,67	1.91	13 (31%)
2	LBV	B	600	1	36,46,46	2.90	16 (44%)	41,67,67	1.90	12 (29%)
2	LBV	C	600	1	36,46,46	2.89	14 (38%)	41,67,67	1.88	11 (26%)
2	LBV	D	600	1	36,46,46	2.89	14 (38%)	41,67,67	1.90	11 (26%)

In the following table, the Chirals column lists the number of chiral outliers, the number of chiral centers analysed, the number of these observed in the model and the number defined in the Chemical Component Dictionary. Similar counts are reported in the Torsion and Rings columns. '-' means no outliers of that kind were identified.

Mol	Type	Chain	Res	Link	Chirals	Torsions	Rings
2	LBV	A	600	1	-	2/22/74/74	0/4/4/4
2	LBV	B	600	1	-	2/22/74/74	0/4/4/4
2	LBV	C	600	1	-	2/22/74/74	0/4/4/4
2	LBV	D	600	1	-	2/22/74/74	0/4/4/4

All (60) bond length outliers are listed below:

Mol	Chain	Res	Type	Atoms	Z	Observed(Å)	Ideal(Å)
2	A	600	LBV	C1A-N_A	9.38	1.49	1.37

Continued on next page...

Continued from previous page...

Mol	Chain	Res	Type	Atoms	Z	Observed(Å)	Ideal(Å)
2	C	600	LBV	C1A-N_A	9.27	1.49	1.37
2	B	600	LBV	C1A-N_A	9.22	1.49	1.37
2	D	600	LBV	C1A-N_A	9.20	1.49	1.37
2	D	600	LBV	CHC-C1C	8.07	1.41	1.35
2	C	600	LBV	CHC-C1C	8.02	1.41	1.35
2	B	600	LBV	CHC-C1C	7.95	1.41	1.35
2	A	600	LBV	CHC-C1C	7.90	1.41	1.35
2	D	600	LBV	CHD-C4C	5.82	1.54	1.40
2	C	600	LBV	CHD-C4C	5.80	1.54	1.40
2	B	600	LBV	CHD-C4C	5.79	1.54	1.40
2	A	600	LBV	CHD-C4C	5.69	1.53	1.40
2	B	600	LBV	C2A-C3A	-4.33	1.46	1.51
2	D	600	LBV	C2A-C3A	-4.24	1.46	1.51
2	A	600	LBV	C2A-C3A	-4.23	1.46	1.51
2	C	600	LBV	C2A-C3A	-4.19	1.46	1.51
2	A	600	LBV	C4B-CHC	3.38	1.54	1.41
2	B	600	LBV	C4B-CHC	3.33	1.54	1.41
2	C	600	LBV	C4B-CHC	3.31	1.54	1.41
2	D	600	LBV	C4B-CHC	3.29	1.53	1.41
2	C	600	LBV	C1B-CHB	3.04	1.52	1.41
2	D	600	LBV	C1B-CHB	3.02	1.52	1.41
2	B	600	LBV	C1B-CHB	2.99	1.52	1.41
2	B	600	LBV	CHB-C4A	2.95	1.40	1.34
2	A	600	LBV	C1B-CHB	2.92	1.52	1.41
2	B	600	LBV	C1C-C2C	-2.92	1.41	1.45
2	A	600	LBV	C3D-C4D	-2.88	1.39	1.47
2	D	600	LBV	C3D-C4D	-2.88	1.39	1.47
2	C	600	LBV	C3D-C4D	-2.88	1.39	1.47
2	D	600	LBV	CHB-C4A	2.85	1.40	1.34
2	B	600	LBV	C3D-C4D	-2.85	1.39	1.47
2	C	600	LBV	CHB-C4A	2.84	1.40	1.34
2	C	600	LBV	C1C-C2C	-2.78	1.41	1.45
2	A	600	LBV	CHB-C4A	2.76	1.40	1.34
2	D	600	LBV	C1C-C2C	-2.75	1.41	1.45
2	A	600	LBV	C1C-C2C	-2.73	1.41	1.45
2	B	600	LBV	C2A-C1A	2.58	1.55	1.51
2	B	600	LBV	C1D-C2D	-2.57	1.40	1.45
2	C	600	LBV	C1D-C2D	-2.55	1.40	1.45
2	D	600	LBV	C2A-C1A	2.55	1.55	1.51
2	D	600	LBV	C1D-C2D	-2.54	1.40	1.45
2	C	600	LBV	C2A-C1A	2.51	1.54	1.51
2	A	600	LBV	C2A-C1A	2.47	1.54	1.51

Continued on next page...

Continued from previous page...

Mol	Chain	Res	Type	Atoms	Z	Observed(Å)	Ideal(Å)
2	A	600	LBV	C1D-C2D	-2.46	1.40	1.45
2	A	600	LBV	C4C-C3C	-2.40	1.40	1.45
2	B	600	LBV	C4C-C3C	-2.40	1.40	1.45
2	C	600	LBV	C4C-C3C	-2.30	1.40	1.45
2	D	600	LBV	C4C-C3C	-2.30	1.40	1.45
2	B	600	LBV	C4A-N_A	2.22	1.41	1.37
2	A	600	LBV	C2C-C3C	2.20	1.41	1.36
2	B	600	LBV	C1D-N_D	-2.19	1.34	1.37
2	A	600	LBV	C4A-N_A	2.14	1.41	1.37
2	D	600	LBV	CAA-C3A	2.13	1.39	1.33
2	B	600	LBV	CAA-C3A	2.13	1.39	1.33
2	B	600	LBV	C2C-C3C	2.11	1.41	1.36
2	C	600	LBV	C4A-N_A	2.11	1.41	1.37
2	A	600	LBV	CAA-C3A	2.10	1.39	1.33
2	D	600	LBV	C4A-N_A	2.10	1.41	1.37
2	C	600	LBV	CAA-C3A	2.10	1.39	1.33
2	A	600	LBV	C1D-N_D	-2.02	1.34	1.37

All (47) bond angle outliers are listed below:

Mol	Chain	Res	Type	Atoms	Z	Observed(°)	Ideal(°)
2	A	600	LBV	C2A-C3A-C4A	5.32	113.64	107.81
2	D	600	LBV	C2A-C3A-C4A	5.29	113.61	107.81
2	C	600	LBV	C2A-C3A-C4A	5.26	113.58	107.81
2	B	600	LBV	C2A-C3A-C4A	5.23	113.55	107.81
2	B	600	LBV	C3D-C4D-N_D	3.47	110.11	106.19
2	A	600	LBV	C3D-C4D-N_D	3.44	110.07	106.19
2	D	600	LBV	C3D-C4D-N_D	3.26	109.88	106.19
2	D	600	LBV	CMC-C3C-C4C	3.26	130.08	125.06
2	C	600	LBV	CMC-C3C-C4C	3.20	130.00	125.06
2	C	600	LBV	C3D-C4D-N_D	3.15	109.75	106.19
2	B	600	LBV	CMC-C3C-C4C	3.11	129.86	125.06
2	A	600	LBV	CMC-C3C-C4C	3.09	129.81	125.06
2	B	600	LBV	CMD-C2D-C1D	3.01	127.93	124.17
2	D	600	LBV	CAC-CBC-CGC	2.97	117.66	112.67
2	A	600	LBV	CMD-C2D-C1D	2.97	127.87	124.17
2	A	600	LBV	CAC-CBC-CGC	2.93	117.59	112.67
2	C	600	LBV	CMD-C2D-C1D	2.90	127.79	124.17
2	C	600	LBV	CAC-CBC-CGC	2.90	117.54	112.67
2	D	600	LBV	CMD-C2D-C1D	2.87	127.75	124.17
2	D	600	LBV	CAB-CBB-CGB	2.83	117.42	112.67
2	D	600	LBV	CHD-C4C-N_C	-2.76	119.16	124.93

Continued on next page...

Continued from previous page...

Mol	Chain	Res	Type	Atoms	Z	Observed(°)	Ideal(°)
2	B	600	LBV	CHD-C4C-C3C	2.76	131.99	124.90
2	B	600	LBV	CAC-CBC-CGC	2.75	117.28	112.67
2	C	600	LBV	CHD-C4C-C3C	2.75	131.96	124.90
2	C	600	LBV	CHD-C4C-N_C	-2.74	119.19	124.93
2	A	600	LBV	CHD-C4C-C3C	2.72	131.91	124.90
2	D	600	LBV	CHD-C4C-C3C	2.72	131.89	124.90
2	B	600	LBV	CHD-C4C-N_C	-2.69	119.31	124.93
2	A	600	LBV	CHD-C4C-N_C	-2.68	119.34	124.93
2	C	600	LBV	CAB-CBB-CGB	2.66	117.13	112.67
2	A	600	LBV	CAB-CBB-CGB	2.65	117.11	112.67
2	B	600	LBV	CAB-CBB-CGB	2.64	117.10	112.67
2	A	600	LBV	C4B-CHC-C1C	-2.35	126.00	128.81
2	B	600	LBV	C4B-CHC-C1C	-2.35	126.00	128.81
2	C	600	LBV	C4B-CHC-C1C	-2.30	126.07	128.81
2	D	600	LBV	C4B-CHC-C1C	-2.27	126.10	128.81
2	A	600	LBV	C1C-N_C-C4C	2.26	110.76	106.51
2	B	600	LBV	C1C-N_C-C4C	2.25	110.75	106.51
2	C	600	LBV	C1C-N_C-C4C	2.17	110.60	106.51
2	D	600	LBV	C1C-N_C-C4C	2.16	110.58	106.51
2	B	600	LBV	C2C-C1C-N_C	-2.15	106.93	110.05
2	A	600	LBV	C2C-C1C-N_C	-2.14	106.94	110.05
2	D	600	LBV	C2C-C1C-N_C	-2.07	107.04	110.05
2	C	600	LBV	C2C-C1C-N_C	-2.05	107.07	110.05
2	A	600	LBV	CHB-C4A-C3A	-2.04	123.44	127.12
2	A	600	LBV	C1D-N_D-C4D	-2.02	108.09	110.67
2	B	600	LBV	C1D-N_D-C4D	-2.02	108.10	110.67

There are no chirality outliers.

All (8) torsion outliers are listed below:

Mol	Chain	Res	Type	Atoms
2	A	600	LBV	C3C-C4C-CHD-C1D
2	A	600	LBV	N_C-C4C-CHD-C1D
2	B	600	LBV	C3C-C4C-CHD-C1D
2	B	600	LBV	N_C-C4C-CHD-C1D
2	C	600	LBV	C3C-C4C-CHD-C1D
2	C	600	LBV	N_C-C4C-CHD-C1D
2	D	600	LBV	C3C-C4C-CHD-C1D
2	D	600	LBV	N_C-C4C-CHD-C1D

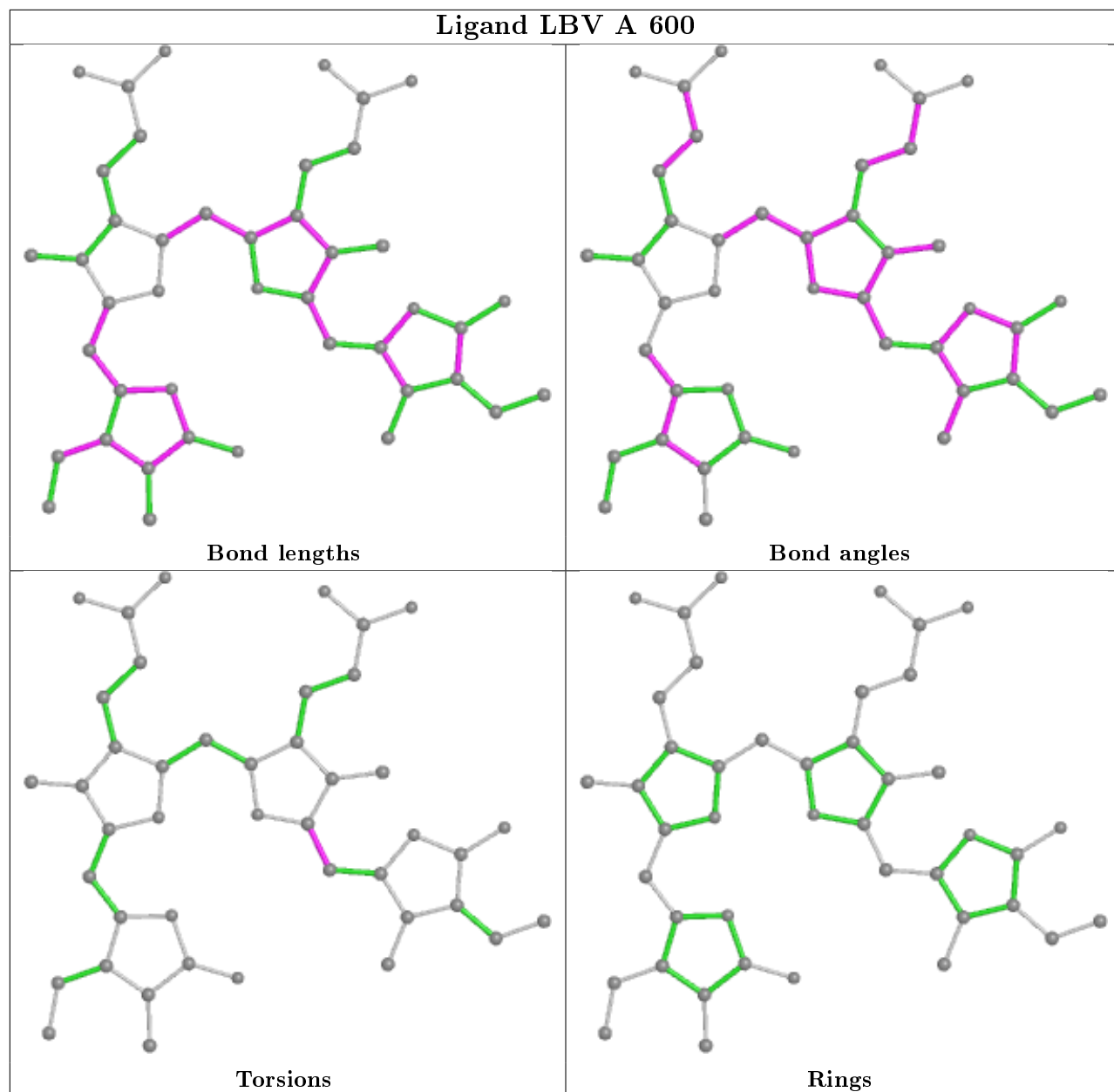
There are no ring outliers.

4 monomers are involved in 8 short contacts:

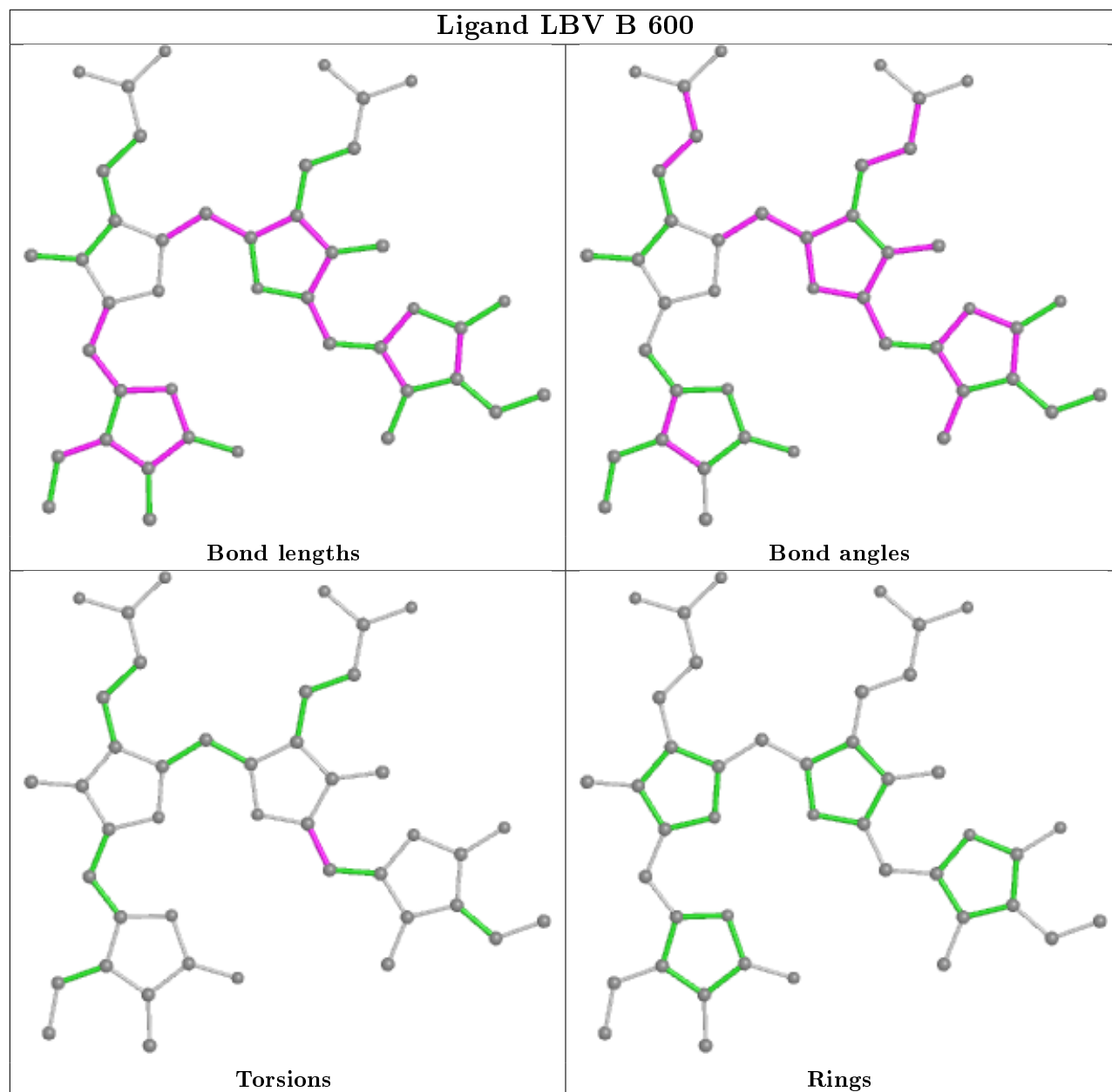
Mol	Chain	Res	Type	Clashes	Symm-Clashes
2	A	600	LBV	2	0
2	B	600	LBV	2	0
2	C	600	LBV	2	0
2	D	600	LBV	2	0

The following is a two-dimensional graphical depiction of Mogul quality analysis of bond lengths, bond angles, torsion angles, and ring geometry for all instances of the Ligand of Interest. In addition, ligands with molecular weight > 250 and outliers as shown on the validation Tables will also be included. For torsion angles, if less than 5% of the Mogul distribution of torsion angles is within 10 degrees of the torsion angle in question, then that torsion angle is considered an outlier. Any bond that is central to one or more torsion angles identified as an outlier by Mogul will be highlighted in the graph. For rings, the root-mean-square deviation (RMSD) between the ring in question and similar rings identified by Mogul is calculated over all ring torsion angles. If the average RMSD is greater than 60 degrees and the minimal RMSD between the ring in question and any Mogul-identified rings is also greater than 60 degrees, then that ring is considered an outlier. The outliers are highlighted in purple. The color gray indicates Mogul did not find sufficient equivalents in the CSD to analyse the geometry.

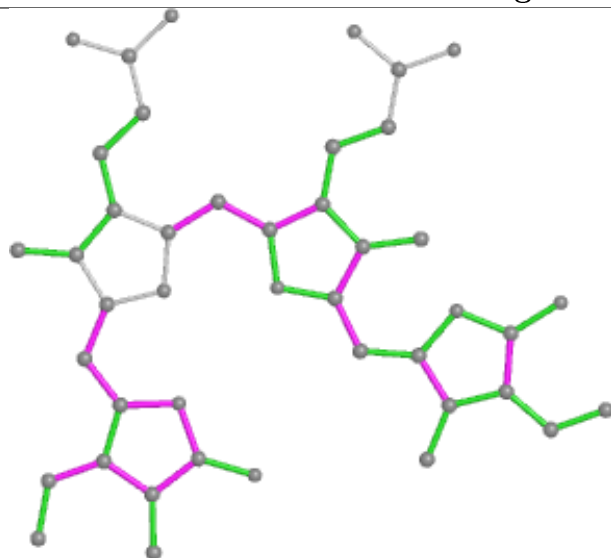
Ligand LBV A 600



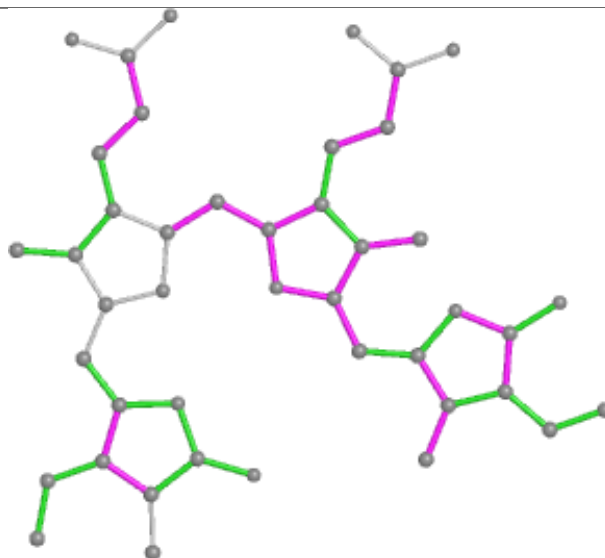
Ligand LBV B 600



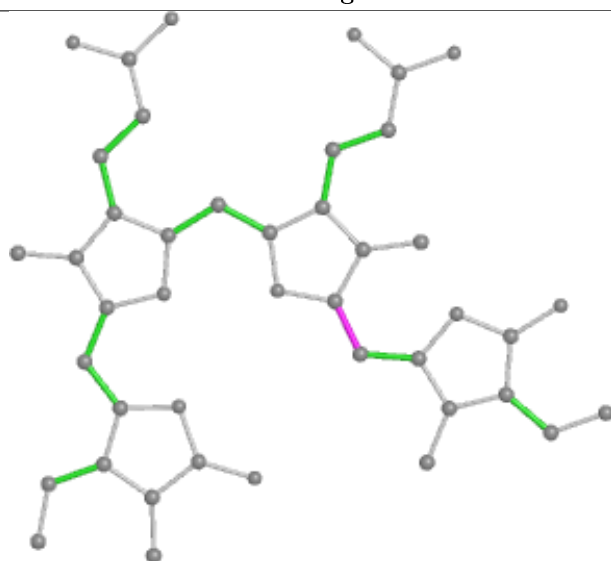
Ligand LBV C 600



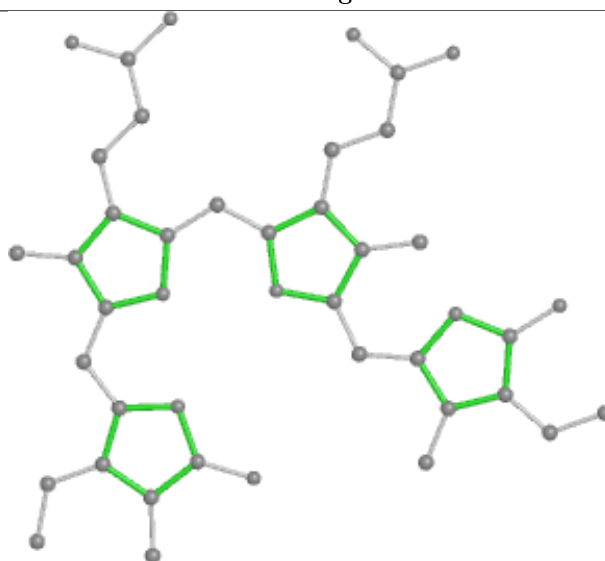
Bond lengths



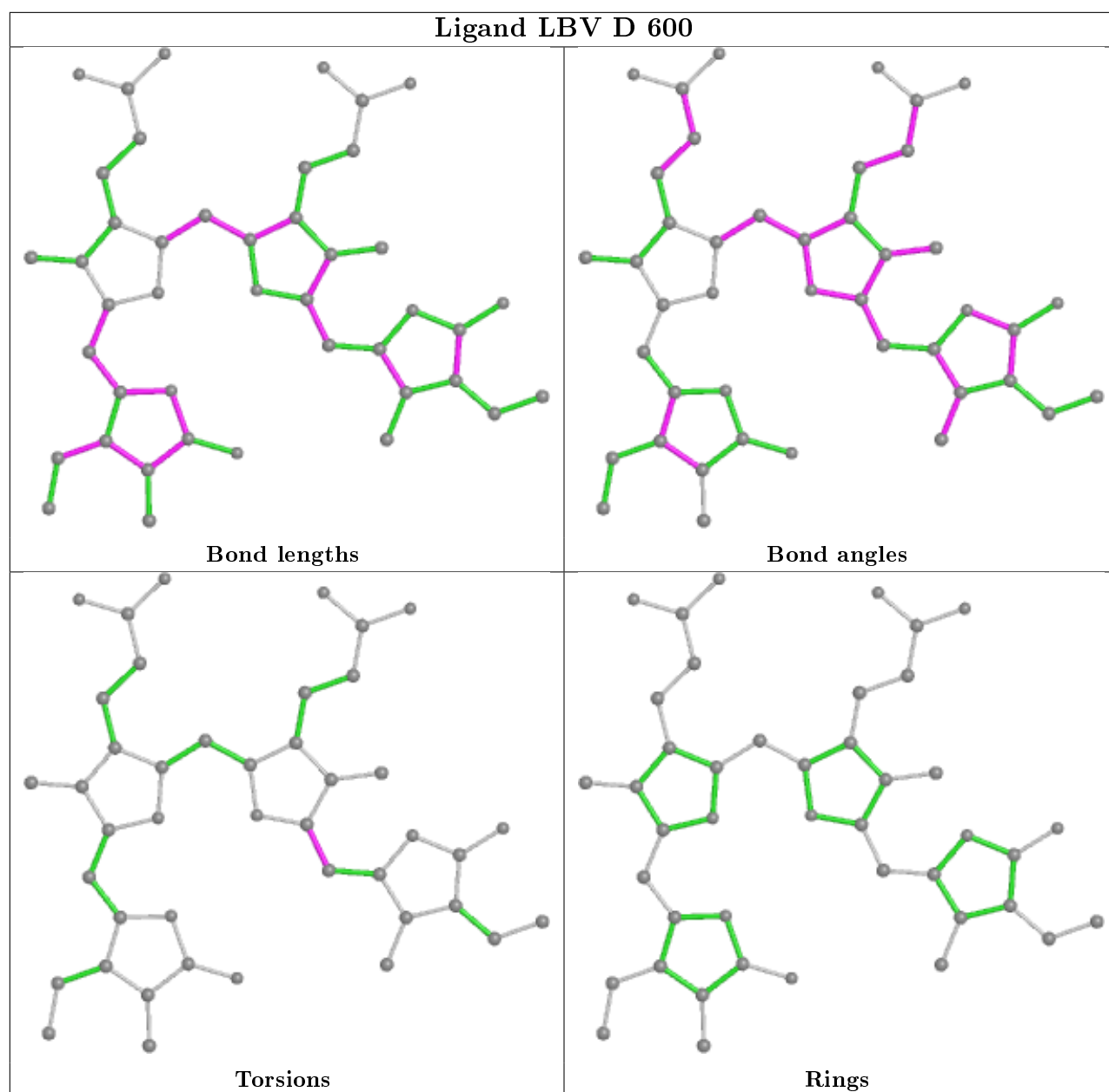
Bond angles



Torsions



Rings



5.7 Other polymers [i](#)

There are no such residues in this entry.

5.8 Polymer linkage issues [i](#)

There are no chain breaks in this entry.

6 Fit of model and data

6.1 Protein, DNA and RNA chains

In the following table, the column labelled ‘#RSRZ> 2’ contains the number (and percentage) of RSRZ outliers, followed by percent RSRZ outliers for the chain as percentile scores relative to all X-ray entries and entries of similar resolution. The OWAB column contains the minimum, median, 95th percentile and maximum values of the occupancy-weighted average B-factor per residue. The column labelled ‘Q< 0.9’ lists the number of (and percentage) of residues with an average occupancy less than 0.9.

Mol	Chain	Analysed	<RSRZ>	#RSRZ>2	OWAB(Å ²)	Q<0.9
1	A	478/523 (91%)	-0.41	5 (1%) 82 70	104, 153, 240, 267	0
1	B	475/523 (90%)	-0.41	3 (0%) 89 81	104, 167, 242, 278	0
1	C	469/523 (89%)	-0.08	16 (3%) 45 30	133, 226, 281, 318	0
1	D	469/523 (89%)	-0.03	15 (3%) 47 32	130, 223, 276, 318	0
All	All	1891/2092 (90%)	-0.24	39 (2%) 63 48	104, 201, 267, 318	0

All (39) RSRZ outliers are listed below:

Mol	Chain	Res	Type	RSRZ
1	D	43	THR	4.6
1	D	289	CYS	4.3
1	C	289	CYS	4.3
1	D	110	HIS	4.0
1	C	192	ARG	4.0
1	D	240	PRO	3.9
1	D	114	THR	3.6
1	A	432	GLU	3.4
1	A	424	GLY	3.4
1	B	427	ALA	3.1
1	B	373	GLU	3.0
1	D	139	ALA	3.0
1	C	174	MET	3.0
1	D	281	GLY	2.9
1	C	43	THR	2.8
1	C	272	SER	2.8
1	D	230	ALA	2.8
1	C	470	ASP	2.7
1	C	63	GLY	2.7
1	D	125	GLU	2.6
1	D	191	ARG	2.6

Continued on next page...

Continued from previous page...

Mol	Chain	Res	Type	RSRZ
1	D	192	ARG	2.6
1	C	47	HIS	2.5
1	A	374	GLY	2.4
1	C	346	LEU	2.4
1	C	467	HIS	2.4
1	D	65	GLU	2.3
1	B	65	GLU	2.2
1	C	65	GLU	2.2
1	C	173	VAL	2.2
1	C	466	ARG	2.1
1	C	193	GLU	2.1
1	D	53	GLN	2.1
1	C	110	HIS	2.1
1	D	238	LEU	2.1
1	A	427	ALA	2.1
1	D	344	HIS	2.0
1	C	68	VAL	2.0
1	A	130	GLU	2.0

6.2 Non-standard residues in protein, DNA, RNA chains [i](#)

There are no non-standard protein/DNA/RNA residues in this entry.

6.3 Carbohydrates [i](#)

There are no carbohydrates in this entry.

6.4 Ligands [i](#)

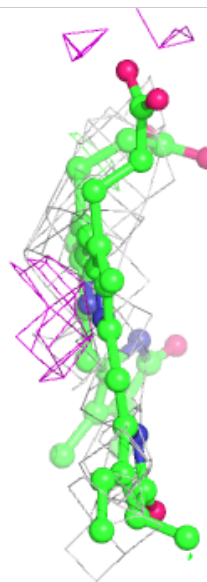
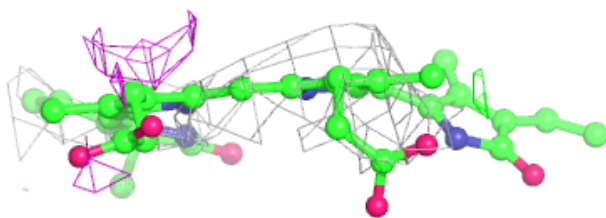
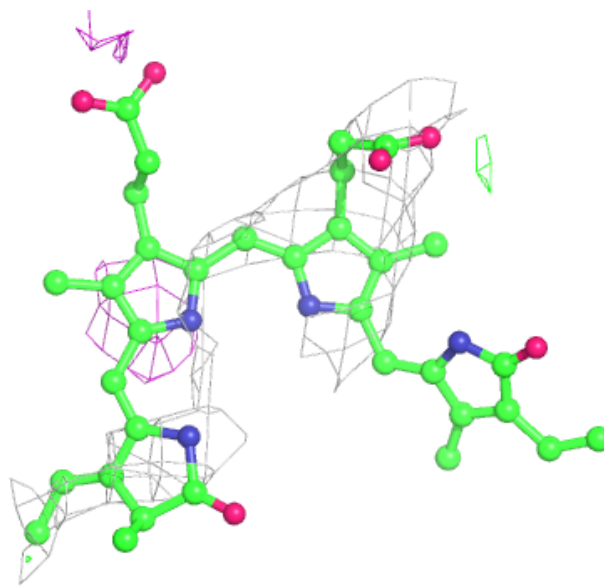
In the following table, the Atoms column lists the number of modelled atoms in the group and the number defined in the chemical component dictionary. The B-factors column lists the minimum, median, 95th percentile and maximum values of B factors of atoms in the group. The column labelled 'Q< 0.9' lists the number of atoms with occupancy less than 0.9.

Mol	Type	Chain	Res	Atoms	RSCC	RSR	B-factors(Å ²)	Q<0.9
2	LBV	C	600	43/43	0.66	0.42	224,252,292,296	0
2	LBV	D	600	43/43	0.75	0.41	174,215,260,281	0
2	LBV	B	600	43/43	0.90	0.29	95,147,167,202	0
2	LBV	A	600	43/43	0.91	0.27	108,138,160,171	0

The following is a graphical depiction of the model fit to experimental electron density of all instances of the Ligand of Interest. In addition, ligands with molecular weight > 250 and outliers as shown on the geometry validation Tables will also be included. Each fit is shown from different orientation to approximate a three-dimensional view.

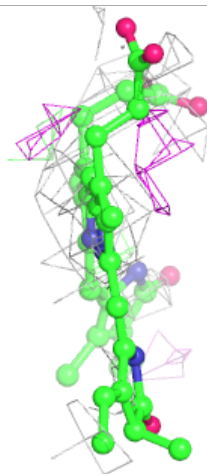
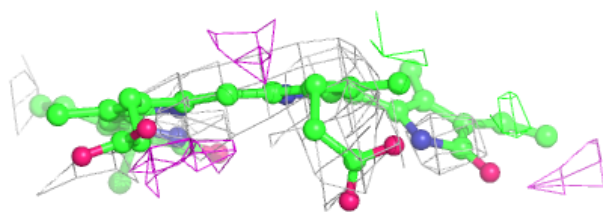
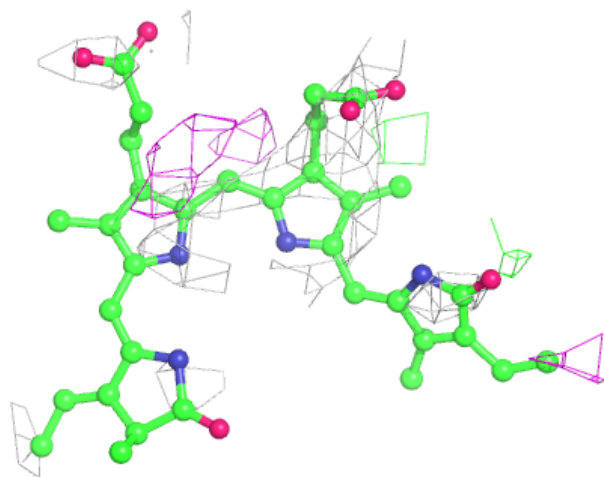
Electron density around LBV C 600:

$2mF_o-DF_c$ (at 0.7 rmsd) in gray
 mF_o-DF_c (at 3 rmsd) in purple (negative)
and green (positive)



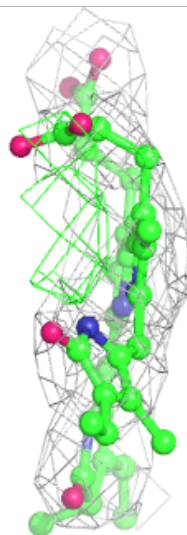
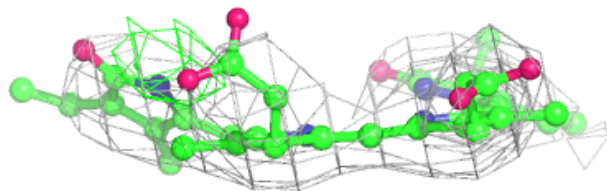
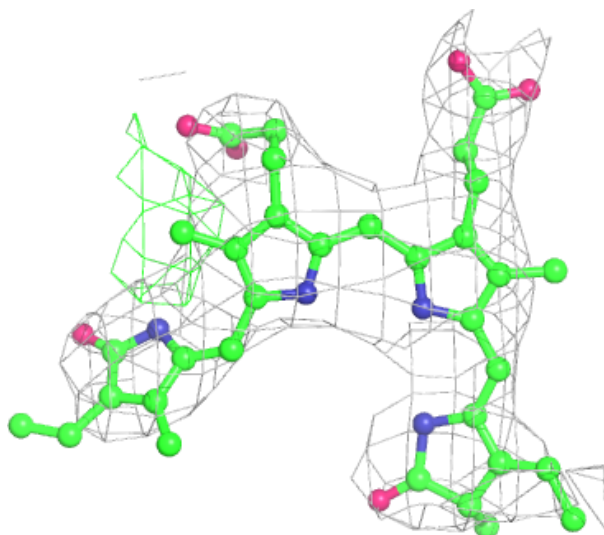
Electron density around LBV D 600:

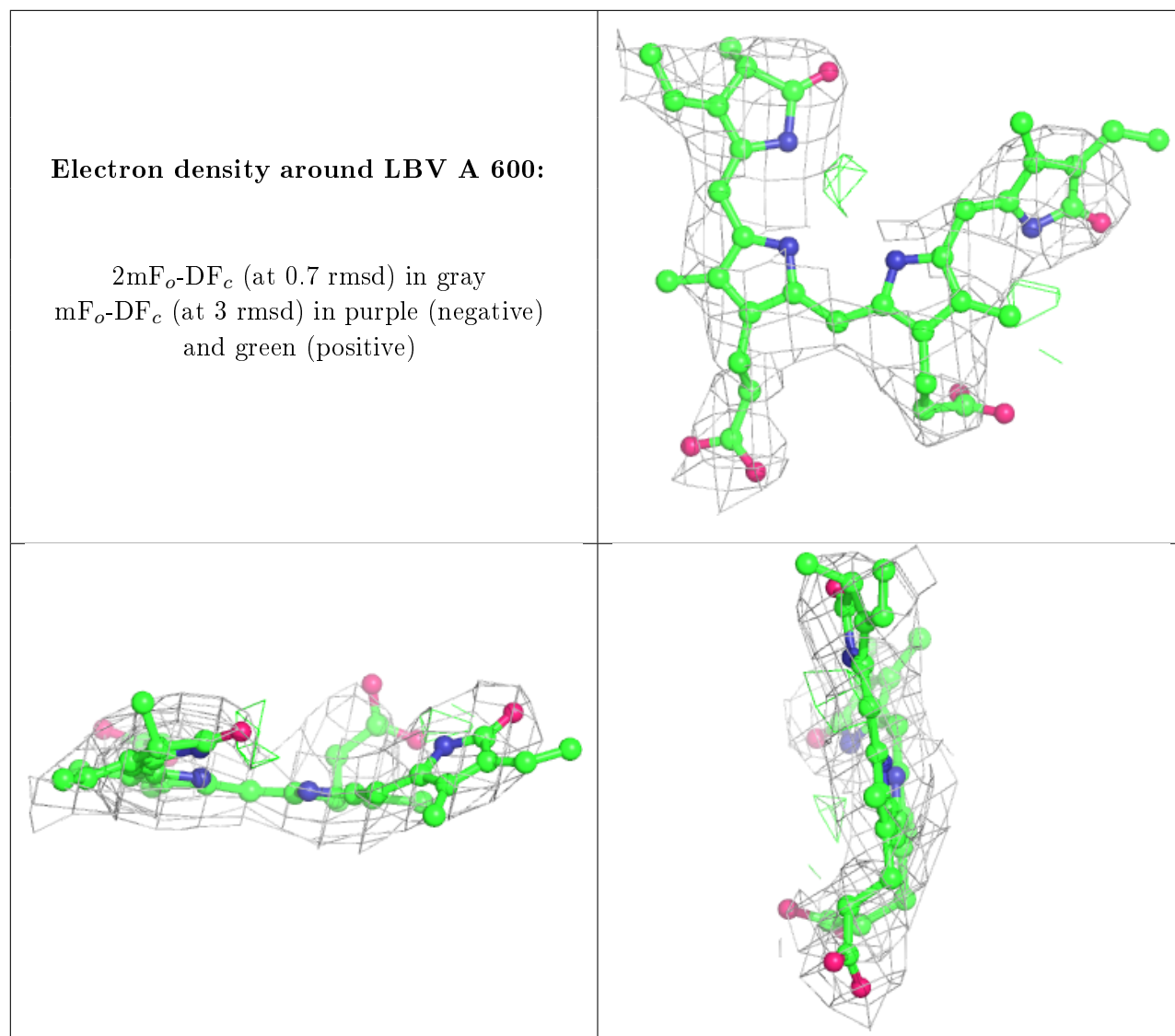
$2mF_o-DF_c$ (at 0.7 rmsd) in gray
 mF_o-DF_c (at 3 rmsd) in purple (negative)
and green (positive)



Electron density around LBV B 600:

$2mF_o-DF_c$ (at 0.7 rmsd) in gray
 mF_o-DF_c (at 3 rmsd) in purple (negative)
and green (positive)





6.5 Other polymers [i](#)

There are no such residues in this entry.