



Full wwPDB X-ray Structure Validation Report ⓘ

May 29, 2020 – 08:37 pm BST

PDB ID : 3NZ1
Title : Crystal Structure of Kemp Elimination Catalyst 1A53-2 Complexed with Transition State Analog 5-Nitro Benzotriazole
Authors : Lee, T.M.; Privett, H.K.; Kaiser, J.T.; Mayo, S.L.
Deposited on : 2010-07-15
Resolution : 1.56 Å(reported)

This is a Full wwPDB X-ray Structure Validation Report for a publicly released PDB entry.

We welcome your comments at validation@mail.wwpdb.org

A user guide is available at

<https://www.wwpdb.org/validation/2017/XrayValidationReportHelp>

with specific help available everywhere you see the ⓘ symbol.

The following versions of software and data (see [references ⓘ](#)) were used in the production of this report:

MolProbity : 4.02b-467
Mogul : 1.8.5 (274361), CSD as541be (2020)
Xtriage (Phenix) : 1.13
EDS : 2.11
Percentile statistics : 20191225.v01 (using entries in the PDB archive December 25th 2019)
Refmac : 5.8.0158
CCP4 : 7.0.044 (Gargrove)
Ideal geometry (proteins) : Engh & Huber (2001)
Ideal geometry (DNA, RNA) : Parkinson et al. (1996)
Validation Pipeline (wwPDB-VP) : 2.11

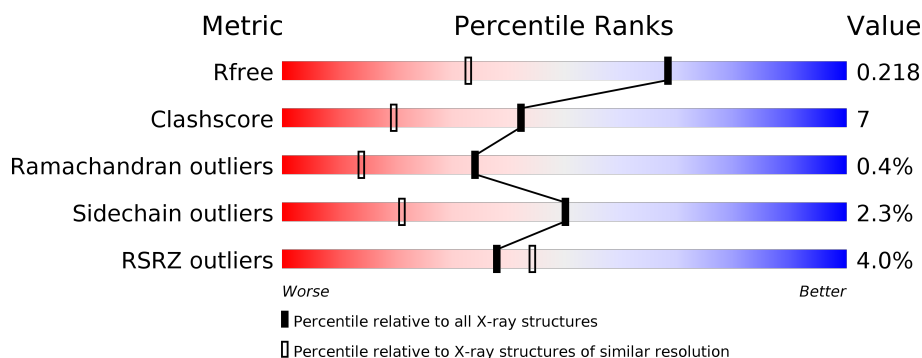
1 Overall quality at a glance

The following experimental techniques were used to determine the structure:

X-RAY DIFFRACTION

The reported resolution of this entry is 1.56 Å.

Percentile scores (ranging between 0-100) for global validation metrics of the entry are shown in the following graphic. The table shows the number of entries on which the scores are based.



Metric	Whole archive (#Entries)	Similar resolution (#Entries, resolution range(Å))
R_{free}	130704	1483 (1.56-1.56)
Clashscore	141614	1529 (1.56-1.56)
Ramachandran outliers	138981	1498 (1.56-1.56)
Sidechain outliers	138945	1495 (1.56-1.56)
RSRZ outliers	127900	1465 (1.56-1.56)

The table below summarises the geometric issues observed across the polymeric chains and their fit to the electron density. The red, orange, yellow and green segments on the lower bar indicate the fraction of residues that contain outliers for ≥ 3 , 2, 1 and 0 types of geometric quality criteria respectively. A grey segment represents the fraction of residues that are not modelled. The numeric value for each fraction is indicated below the corresponding segment, with a dot representing fractions $\leq 5\%$. The upper red bar (where present) indicates the fraction of residues that have poor fit to the electron density. The numeric value is given above the bar.

Mol	Chain	Length	Quality of chain
1	A	261	

The following table lists non-polymeric compounds, carbohydrate monomers and non-standard residues in protein, DNA, RNA chains that are outliers for geometric or electron-density-fit criteria:

Mol	Type	Chain	Res	Chirality	Geometry	Clashes	Electron density
3	SO4	A	266	-	-	X	-
3	SO4	A	267	-	-	X	-

Continued on next page...

Continued from previous page...

Mol	Type	Chain	Res	Chirality	Geometry	Clashes	Electron density
4	TLA	A	271	-	-	-	X

2 Entry composition

There are 5 unique types of molecules in this entry. The entry contains 2347 atoms, of which 0 are hydrogens and 0 are deuteriums.

In the tables below, the ZeroOcc column contains the number of atoms modelled with zero occupancy, the AltConf column contains the number of residues with at least one atom in alternate conformation and the Trace column contains the number of residues modelled with at most 2 atoms.

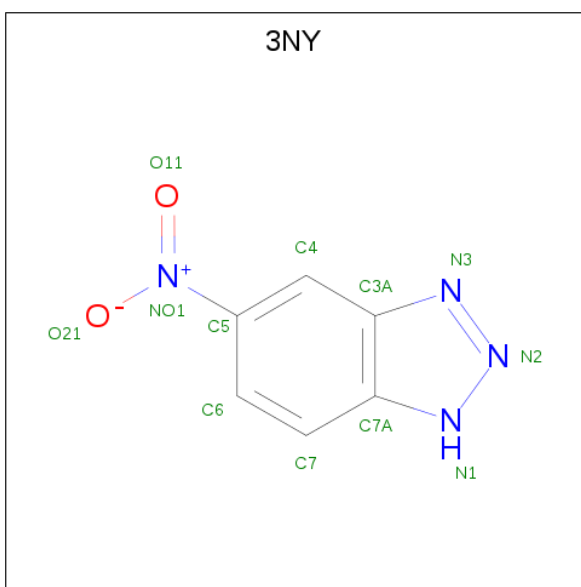
- Molecule 1 is a protein called Indole-3-glycerol phosphate synthase.

Mol	Chain	Residues	Atoms					ZeroOcc	AltConf	Trace
1	A	249	Total	C	N	O	S	0	11	0
			2085	1319	366	395	5			

There are 25 discrepancies between the modelled and reference sequences:

Chain	Residue	Modelled	Actual	Comment	Reference
A	51	ALA	GLU	ENGINEERED MUTATION	UNP Q06121
A	81	ALA	SER	ENGINEERED MUTATION	UNP Q06121
A	83	ALA	LEU	ENGINEERED MUTATION	UNP Q06121
A	110	TRP	LYS	ENGINEERED MUTATION	UNP Q06121
A	131	ALA	LEU	ENGINEERED MUTATION	UNP Q06121
A	157	ALA	LEU	ENGINEERED MUTATION	UNP Q06121
A	159	VAL	GLU	ENGINEERED MUTATION	UNP Q06121
A	178	GLU	GLY	ENGINEERED MUTATION	UNP Q06121
A	180	ALA	ASN	ENGINEERED MUTATION	UNP Q06121
A	210	TRP	GLU	ENGINEERED MUTATION	UNP Q06121
A	211	GLN	SER	ENGINEERED MUTATION	UNP Q06121
A	231	GLY	LEU	ENGINEERED MUTATION	UNP Q06121
A	249	GLY	-	EXPRESSION TAG	UNP Q06121
A	250	SER	-	EXPRESSION TAG	UNP Q06121
A	251	ILE	-	EXPRESSION TAG	UNP Q06121
A	252	GLU	-	EXPRESSION TAG	UNP Q06121
A	253	GLY	-	EXPRESSION TAG	UNP Q06121
A	254	ARG	-	EXPRESSION TAG	UNP Q06121
A	255	GLY	-	EXPRESSION TAG	UNP Q06121
A	256	HIS	-	EXPRESSION TAG	UNP Q06121
A	257	HIS	-	EXPRESSION TAG	UNP Q06121
A	258	HIS	-	EXPRESSION TAG	UNP Q06121
A	259	HIS	-	EXPRESSION TAG	UNP Q06121
A	260	HIS	-	EXPRESSION TAG	UNP Q06121
A	261	HIS	-	EXPRESSION TAG	UNP Q06121

- Molecule 2 is 5-nitro-1H-benzotriazole (three-letter code: 3NY) (formula: C₆H₄N₄O₂).



Mol	Chain	Residues	Atoms				ZeroOcc	AltConf
2	A	1	Total	C	N	O	0	0
			12	6	4	2		

- Molecule 3 is SULFATE ION (three-letter code: SO4) (formula: O₄S).



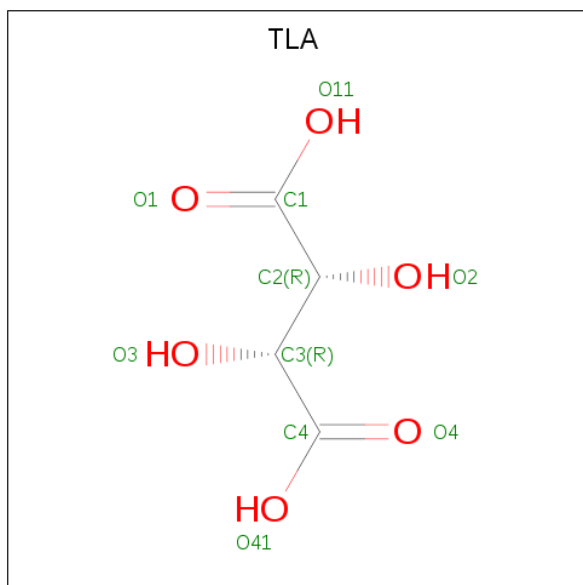
Mol	Chain	Residues	Atoms			ZeroOcc	AltConf
3	A	1	Total	O	S	0	0
			5	4	1		
3	A	1	Total	O	S	0	0
			5	4	1		
3	A	1	Total	O	S	0	0
			5	4	1		

Continued on next page...

Continued from previous page...

Mol	Chain	Residues	Atoms			ZeroOcc	AltConf
3	A	1	Total	O	S	0	0
			5	4	1		
3	A	1	Total	O	S	0	0
			5	4	1		
3	A	1	Total	O	S	0	0
			5	4	1		

- Molecule 4 is L(+)-TARTARIC ACID (three-letter code: TLA) (formula: $C_4H_6O_6$).



Mol	Chain	Residues	Atoms			ZeroOcc	AltConf
4	A	1	Total	C	O	0	0
			10	4	6		
4	A	1	Total	C	O	0	0
			10	4	6		
4	A	1	Total	C	O	0	0
			10	4	6		

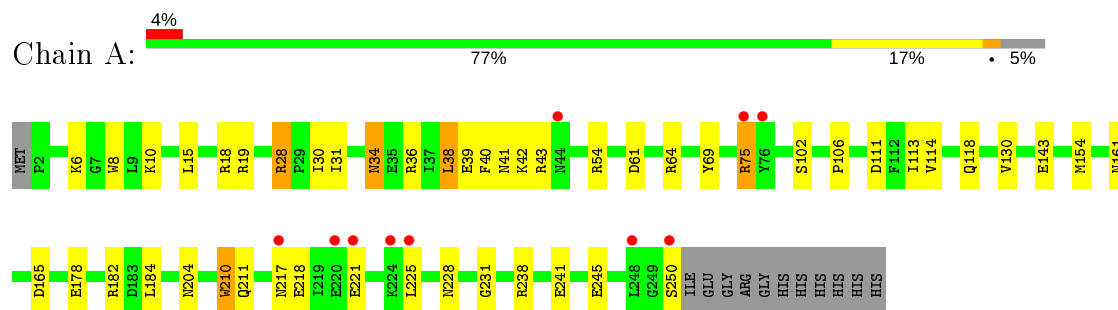
- Molecule 5 is water.

Mol	Chain	Residues	Atoms		ZeroOcc	AltConf
5	A	181	Total	O	0	9
			190	190		

3 Residue-property plots [i](#)

These plots are drawn for all protein, RNA and DNA chains in the entry. The first graphic for a chain summarises the proportions of the various outlier classes displayed in the second graphic. The second graphic shows the sequence view annotated by issues in geometry and electron density. Residues are color-coded according to the number of geometric quality criteria for which they contain at least one outlier: green = 0, yellow = 1, orange = 2 and red = 3 or more. A red dot above a residue indicates a poor fit to the electron density ($RSRZ > 2$). Stretches of 2 or more consecutive residues without any outlier are shown as a green connector. Residues present in the sample, but not in the model, are shown in grey.

- Molecule 1: Indole-3-glycerol phosphate synthase



4 Data and refinement statistics

Property	Value	Source
Space group	P 31 2 1	Depositor
Cell constants a, b, c, α , β , γ	60.72Å 60.72Å 120.18Å 90.00° 90.00° 120.00°	Depositor
Resolution (Å)	52.58 – 1.56 40.06 – 1.56	Depositor EDS
% Data completeness (in resolution range)	99.7 (52.58-1.56) 99.7 (40.06-1.56)	Depositor EDS
R_{merge}	(Not available)	Depositor
R_{sym}	0.07	Depositor
$\langle I/\sigma(I) \rangle$ ¹	1.90 (at 1.56Å)	Xtriage
Refinement program	REFMAC	Depositor
R, R_{free}	0.172 , 0.210 0.185 , 0.218	Depositor DCC
R_{free} test set	1856 reflections (4.99%)	wwPDB-VP
Wilson B-factor (Å ²)	22.0	Xtriage
Anisotropy	0.040	Xtriage
Bulk solvent k_{sol} (e/Å ³), B_{sol} (Å ²)	0.37 , 53.7	EDS
L-test for twinning ²	$\langle L \rangle = 0.50$, $\langle L^2 \rangle = 0.33$	Xtriage
Estimated twinning fraction	0.030 for -h,-k,l	Xtriage
F_o, F_c correlation	0.97	EDS
Total number of atoms	2347	wwPDB-VP
Average B, all atoms (Å ²)	13.0	wwPDB-VP

Xtriage's analysis on translational NCS is as follows: *The largest off-origin peak in the Patterson function is 4.94% of the height of the origin peak. No significant pseudotranslation is detected.*

¹Intensities estimated from amplitudes.

²Theoretical values of $\langle |L| \rangle$, $\langle L^2 \rangle$ for acentric reflections are 0.5, 0.333 respectively for untwinned datasets, and 0.375, 0.2 for perfectly twinned datasets.

5 Model quality [i](#)

5.1 Standard geometry [i](#)

Bond lengths and bond angles in the following residue types are not validated in this section: TLA, SO4, 3NY

The Z score for a bond length (or angle) is the number of standard deviations the observed value is removed from the expected value. A bond length (or angle) with $|Z| > 5$ is considered an outlier worth inspection. RMSZ is the root-mean-square of all Z scores of the bond lengths (or angles).

Mol	Chain	Bond lengths		Bond angles	
		RMSZ	$\# Z > 5$	RMSZ	$\# Z > 5$
1	A	1.28	10/2127 (0.5%)	1.21	11/2863 (0.4%)

All (10) bond length outliers are listed below:

Mol	Chain	Res	Type	Atoms	Z	Observed(Å)	Ideal(Å)
1	A	218	GLU	CB-CG	-6.51	1.39	1.52
1	A	8	TRP	CZ3-CH2	5.43	1.48	1.40
1	A	241	GLU	CD-OE1	5.35	1.31	1.25
1	A	210	TRP	CB-CG	5.28	1.59	1.50
1	A	69	TYR	CD2-CE2	5.17	1.47	1.39
1	A	102	SER	CB-OG	-5.16	1.35	1.42
1	A	178	GLU	CD-OE1	5.13	1.31	1.25
1	A	6	LYS	CB-CG	-5.13	1.38	1.52
1	A	143	GLU	CD-OE1	5.09	1.31	1.25
1	A	40	PHE	CE2-CZ	5.08	1.47	1.37

All (11) bond angle outliers are listed below:

Mol	Chain	Res	Type	Atoms	Z	Observed(°)	Ideal(°)
1	A	165	ASP	CB-CG-OD1	10.12	127.41	118.30
1	A	165	ASP	CB-CG-OD2	-8.90	110.29	118.30
1	A	64	ARG	NE-CZ-NH1	7.83	124.21	120.30
1	A	38	LEU	CB-CG-CD1	7.39	123.57	111.00
1	A	182	ARG	NE-CZ-NH1	-6.51	117.05	120.30
1	A	42	LYS	CD-CE-NZ	-6.16	97.54	111.70
1	A	111	ASP	CB-CG-OD1	5.83	123.55	118.30
1	A	28	ARG	NE-CZ-NH1	-5.39	117.60	120.30
1	A	19	ARG	NE-CZ-NH1	5.31	122.95	120.30
1	A	154	MET	CG-SD-CE	-5.25	91.80	100.20
1	A	36	ARG	NE-CZ-NH1	-5.25	117.68	120.30

There are no chirality outliers.

There are no planarity outliers.

5.2 Too-close contacts

In the following table, the Non-H and H(model) columns list the number of non-hydrogen atoms and hydrogen atoms in the chain respectively. The H(added) column lists the number of hydrogen atoms added and optimized by MolProbity. The Clashes column lists the number of clashes within the asymmetric unit, whereas Symm-Clashes lists symmetry related clashes.

Mol	Chain	Non-H	H(model)	H(added)	Clashes	Symm-Clashes
1	A	2085	0	2120	27	0
2	A	12	0	4	1	0
3	A	30	0	0	4	0
4	A	30	0	12	3	0
5	A	190	0	0	7	0
All	All	2347	0	2136	30	0

The all-atom clashscore is defined as the number of clashes found per 1000 atoms (including hydrogen atoms). The all-atom clashscore for this structure is 7.

All (30) close contacts within the same asymmetric unit are listed below, sorted by their clash magnitude.

Atom-1	Atom-2	Interatomic distance (Å)	Clash overlap (Å)
1:A:10:LYS:HE3	3:A:266:SO4:O2	1.70	0.89
1:A:114:VAL:H	1:A:118:GLN:HE22	1.26	0.81
1:A:114:VAL:H	1:A:118:GLN:NE2	1.87	0.73
3:A:267:SO4:O1	5:A:414:HOH:O	2.06	0.72
1:A:75:ARG:HH11	1:A:75:ARG:HG2	1.56	0.71
1:A:245:GLU:OE2	1:A:250:SER:HB3	1.91	0.69
1:A:31:ILE:HD11	5:A:394:HOH:O	1.94	0.66
1:A:34:ASN:HD22	1:A:34:ASN:H	1.47	0.63
1:A:225:LEU:HD13	5:A:437:HOH:O	1.98	0.61
1:A:75:ARG:HH11	1:A:75:ARG:CG	2.13	0.60
1:A:31:ILE:HG12	1:A:106:PRO:HG3	1.86	0.58
1:A:10:LYS:CE	3:A:266:SO4:O2	2.50	0.55
1:A:204:ASN:HD21	4:A:271:TLA:C4	2.18	0.55
1:A:41:ASN:ND2	1:A:228:ASN:HD22	2.05	0.54
1:A:161[A]:ASN:CG	1:A:161[A]:ASN:O	2.47	0.53
1:A:18:ARG:CZ	5:A:372:HOH:O	2.57	0.51
1:A:217:ASN:O	1:A:221[A]:GLU:HG3	2.14	0.47
1:A:210:TRP:CD2	1:A:231:GLY:HA3	2.49	0.47

Continued on next page...

Continued from previous page...

Atom-1	Atom-2	Interatomic distance (Å)	Clash overlap (Å)
4:A:271:TLA:H2	5:A:366:HOH:O	2.16	0.45
1:A:184:LEU:HD23	5:A:434:HOH:O	2.17	0.45
1:A:238:ARG:HB2	5:A:450:HOH:O	2.17	0.44
1:A:204:ASN:ND2	4:A:271:TLA:C4	2.81	0.44
2:A:262:3NY:N3	3:A:267:SO4:O3	2.51	0.44
1:A:113:ILE:HD12	1:A:130:VAL:HB	2.01	0.43
1:A:34:ASN:H	1:A:34:ASN:ND2	2.13	0.43
1:A:54:ARG:O	1:A:61:ASP:HA	2.19	0.42
1:A:39[B]:GLU:OE2	1:A:43:ARG:NH1	2.50	0.41
1:A:41:ASN:HD21	1:A:228:ASN:HD22	1.68	0.41
1:A:28:ARG:HD3	1:A:28:ARG:HH11	1.69	0.41
1:A:161[B]:ASN:HD21	1:A:184:LEU:H	1.68	0.40

There are no symmetry-related clashes.

5.3 Torsion angles [i](#)

5.3.1 Protein backbone [i](#)

In the following table, the Percentiles column shows the percent Ramachandran outliers of the chain as a percentile score with respect to all X-ray entries followed by that with respect to entries of similar resolution.

The Analysed column shows the number of residues for which the backbone conformation was analysed, and the total number of residues.

Mol	Chain	Analysed	Favoured	Allowed	Outliers	Percentiles
1	A	258/261 (99%)	252 (98%)	5 (2%)	1 (0%)	34 14

All (1) Ramachandran outliers are listed below:

Mol	Chain	Res	Type
1	A	211	GLN

5.3.2 Protein sidechains [i](#)

In the following table, the Percentiles column shows the percent sidechain outliers of the chain as a percentile score with respect to all X-ray entries followed by that with respect to entries of similar resolution.

The Analysed column shows the number of residues for which the sidechain conformation was

analysed, and the total number of residues.

Mol	Chain	Analysed	Rotameric	Outliers	Percentiles
1	A	230/229 (100%)	225 (98%)	5 (2%)	52 23

All (5) residues with a non-rotameric sidechain are listed below:

Mol	Chain	Res	Type
1	A	15	LEU
1	A	30	ILE
1	A	34	ASN
1	A	38	LEU
1	A	75	ARG

Some sidechains can be flipped to improve hydrogen bonding and reduce clashes. All (6) such sidechains are listed below:

Mol	Chain	Res	Type
1	A	34	ASN
1	A	41	ASN
1	A	44	ASN
1	A	90	ASN
1	A	118	GLN
1	A	124	ASN

5.3.3 RNA [i](#)

There are no RNA molecules in this entry.

5.4 Non-standard residues in protein, DNA, RNA chains [i](#)

There are no non-standard protein/DNA/RNA residues in this entry.

5.5 Carbohydrates [i](#)

There are no carbohydrates in this entry.

5.6 Ligand geometry [i](#)

10 ligands are modelled in this entry.

In the following table, the Counts columns list the number of bonds (or angles) for which Mogul statistics could be retrieved, the number of bonds (or angles) that are observed in the model and the number of bonds (or angles) that are defined in the Chemical Component Dictionary. The Link column lists molecule types, if any, to which the group is linked. The Z score for a bond length (or angle) is the number of standard deviations the observed value is removed from the expected value. A bond length (or angle) with $|Z| > 2$ is considered an outlier worth inspection. RMSZ is the root-mean-square of all Z scores of the bond lengths (or angles).

Mol	Type	Chain	Res	Link	Bond lengths			Bond angles		
					Counts	RMSZ	$\# Z > 2$	Counts	RMSZ	$\# Z > 2$
3	SO4	A	264	-	4,4,4	0.47	0	6,6,6	1.22	1 (16%)
3	SO4	A	268	-	4,4,4	0.63	0	6,6,6	2.15	3 (50%)
2	3NY	A	262	-	8,13,13	1.40	1 (12%)	10,18,18	1.76	2 (20%)
3	SO4	A	266	-	4,4,4	0.12	0	6,6,6	0.42	0
3	SO4	A	265	-	4,4,4	0.67	0	6,6,6	1.07	1 (16%)
4	TLA	A	271	-	3,9,9	1.20	0	6,12,12	2.50	3 (50%)
3	SO4	A	267	-	4,4,4	0.35	0	6,6,6	0.61	0
4	TLA	A	269	-	3,9,9	1.51	1 (33%)	6,12,12	2.81	4 (66%)
3	SO4	A	263	-	4,4,4	0.11	0	6,6,6	1.25	1 (16%)
4	TLA	A	270	-	3,9,9	1.52	1 (33%)	6,12,12	1.89	3 (50%)

In the following table, the Chirals column lists the number of chiral outliers, the number of chiral centers analysed, the number of these observed in the model and the number defined in the Chemical Component Dictionary. Similar counts are reported in the Torsion and Rings columns. '-' means no outliers of that kind were identified.

Mol	Type	Chain	Res	Link	Chirals	Torsions	Rings
4	TLA	A	271	-	-	1/4/12/12	-
4	TLA	A	269	-	-	1/4/12/12	-
2	3NY	A	262	-	-	0/2/4/4	0/2/2/2
4	TLA	A	270	-	-	3/4/12/12	-

All (3) bond length outliers are listed below:

Mol	Chain	Res	Type	Atoms	Z	Observed(Å)	Ideal(Å)
4	A	269	TLA	O3-C3	-2.20	1.38	1.42
2	A	262	3NY	C7-C6	2.08	1.41	1.36
4	A	270	TLA	O2-C2	-2.04	1.38	1.42

All (18) bond angle outliers are listed below:

Mol	Chain	Res	Type	Atoms	Z	Observed(°)	Ideal(°)
4	A	269	TLA	O2-C2-C1	-4.46	100.36	111.10
2	A	262	3NY	N3-N2-N1	-3.89	106.20	111.25
4	A	269	TLA	O3-C3-C4	-3.69	102.21	111.10
4	A	271	TLA	O3-C3-C4	-3.39	102.93	111.10
4	A	271	TLA	O2-C2-C1	-3.24	103.29	111.10
3	A	268	SO4	O4-S-O2	3.04	125.16	109.31
4	A	271	TLA	C4-C3-C2	2.87	119.27	113.11
4	A	270	TLA	O2-C2-C3	-2.73	99.78	108.90
3	A	268	SO4	O3-S-O2	-2.73	95.05	109.31
4	A	269	TLA	C4-C3-C2	2.71	118.93	113.11
3	A	263	SO4	O4-S-O3	-2.61	97.91	109.06
3	A	268	SO4	O4-S-O3	2.60	120.15	109.06
4	A	270	TLA	C1-C2-C3	-2.47	107.79	113.11
4	A	270	TLA	O2-C2-C1	-2.32	105.50	111.10
2	A	262	3NY	C6-C5-NO1	2.31	121.11	119.38
3	A	265	SO4	O4-S-O2	2.22	120.89	109.31
3	A	264	SO4	O4-S-O2	-2.14	98.14	109.31
4	A	269	TLA	O3-C3-C2	-2.05	102.04	108.90

There are no chirality outliers.

All (5) torsion outliers are listed below:

Mol	Chain	Res	Type	Atoms
4	A	269	TLA	C1-C2-C3-C4
4	A	271	TLA	C1-C2-C3-C4
4	A	270	TLA	C1-C2-C3-C4
4	A	270	TLA	O2-C2-C3-O3
4	A	270	TLA	O2-C2-C3-C4

There are no ring outliers.

4 monomers are involved in 7 short contacts:

Mol	Chain	Res	Type	Clashes	Symm-Clashes
2	A	262	3NY	1	0
3	A	266	SO4	2	0
4	A	271	TLA	3	0
3	A	267	SO4	2	0

5.7 Other polymers ⓘ

There are no such residues in this entry.

5.8 Polymer linkage issues ⓘ

There are no chain breaks in this entry.

6 Fit of model and data [i](#)

6.1 Protein, DNA and RNA chains [i](#)

In the following table, the column labelled ‘#RSRZ> 2’ contains the number (and percentage) of RSRZ outliers, followed by percent RSRZ outliers for the chain as percentile scores relative to all X-ray entries and entries of similar resolution. The OWAB column contains the minimum, median, 95th percentile and maximum values of the occupancy-weighted average B-factor per residue. The column labelled ‘Q< 0.9’ lists the number of (and percentage) of residues with an average occupancy less than 0.9.

Mol	Chain	Analysed	<RSRZ>	#RSRZ>2		OWAB(Å ²)	Q<0.9
1	A	249/261 (95%)	0.13	10 (4%)	38 44	3, 11, 17, 43	0

All (10) RSRZ outliers are listed below:

Mol	Chain	Res	Type	RSRZ
1	A	217	ASN	3.5
1	A	248	LEU	3.3
1	A	44	ASN	3.1
1	A	76	TYR	2.9
1	A	224	LYS	2.9
1	A	225	LEU	2.6
1	A	221[A]	GLU	2.6
1	A	250	SER	2.5
1	A	75	ARG	2.4
1	A	220	GLU	2.3

6.2 Non-standard residues in protein, DNA, RNA chains [i](#)

There are no non-standard protein/DNA/RNA residues in this entry.

6.3 Carbohydrates [i](#)

There are no carbohydrates in this entry.

6.4 Ligands [i](#)

In the following table, the Atoms column lists the number of modelled atoms in the group and the number defined in the chemical component dictionary. The B-factors column lists the minimum, median, 95th percentile and maximum values of B factors of atoms in the group. The column labelled ‘Q< 0.9’ lists the number of atoms with occupancy less than 0.9.

Mol	Type	Chain	Res	Atoms	RSCC	RSR	B-factors(\AA^2)	Q<0.9
4	TLA	A	270	10/10	0.73	0.35	35,41,50,52	10
4	TLA	A	271	10/10	0.74	0.50	37,41,49,50	10
4	TLA	A	269	10/10	0.79	0.37	39,42,49,53	10
2	3NY	A	262	12/12	0.83	0.24	23,26,29,33	12
3	SO4	A	268	5/5	0.84	0.19	24,33,38,39	5
3	SO4	A	263	5/5	0.90	0.23	32,35,37,42	5
3	SO4	A	264	5/5	0.93	0.14	24,28,29,30	5
3	SO4	A	266	5/5	0.93	0.12	59,59,61,61	5
3	SO4	A	267	5/5	0.97	0.17	31,31,35,35	5
3	SO4	A	265	5/5	0.99	0.14	15,22,27,29	5

6.5 Other polymers [i](#)

There are no such residues in this entry.