



wwPDB X-ray Structure Validation Summary Report ⓘ

May 13, 2020 – 03:46 am BST

PDB ID : 3NZ4
Title : Crystal Structure of a Taxus Phenylalanine Aminomutase
Authors : Feng, L.; Geiger, J.H.
Deposited on : 2010-07-16
Resolution : 2.38 Å(reported)

This is a wwPDB X-ray Structure Validation Summary Report for a publicly released PDB entry.

We welcome your comments at validation@mail.wwpdb.org

A user guide is available at

<https://www.wwpdb.org/validation/2017/XrayValidationReportHelp>

with specific help available everywhere you see the ⓘ symbol.

The following versions of software and data (see [references ⓘ](#)) were used in the production of this report:

MolProbity : 4.02b-467
Mogul : 1.8.5 (274361), CSD as541be (2020)
Xtriage (Phenix) : 1.13
EDS : 2.11
Percentile statistics : 20191225.v01 (using entries in the PDB archive December 25th 2019)
Refmac : 5.8.0158
CCP4 : 7.0.044 (Gargrove)
Ideal geometry (proteins) : Engh & Huber (2001)
Ideal geometry (DNA, RNA) : Parkinson et al. (1996)
Validation Pipeline (wwPDB-VP) : 2.11

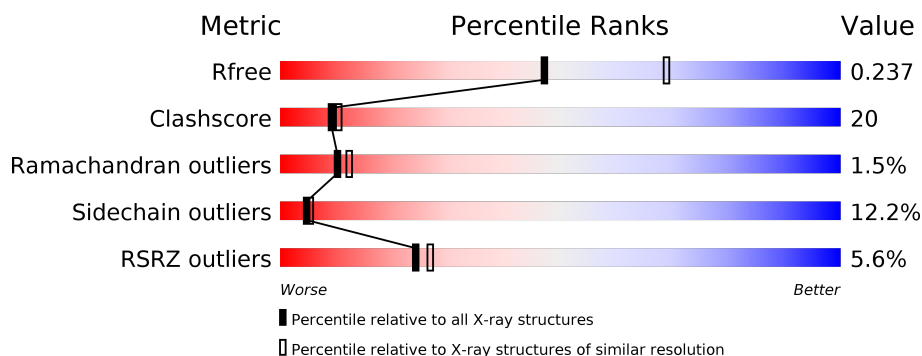
1 Overall quality at a glance

The following experimental techniques were used to determine the structure:

X-RAY DIFFRACTION

The reported resolution of this entry is 2.38 Å.

Percentile scores (ranging between 0-100) for global validation metrics of the entry are shown in the following graphic. The table shows the number of entries on which the scores are based.



Metric	Whole archive (#Entries)	Similar resolution (#Entries, resolution range(Å))
R_{free}	130704	5509 (2.40-2.36)
Clashscore	141614	6082 (2.40-2.36)
Ramachandran outliers	138981	5973 (2.40-2.36)
Sidechain outliers	138945	5975 (2.40-2.36)
RSRZ outliers	127900	5397 (2.40-2.36)

The table below summarises the geometric issues observed across the polymeric chains and their fit to the electron density. The red, orange, yellow and green segments on the lower bar indicate the fraction of residues that contain outliers for ≥ 3 , 2, 1 and 0 types of geometric quality criteria respectively. A grey segment represents the fraction of residues that are not modelled. The numeric value for each fraction is indicated below the corresponding segment, with a dot representing fractions $\leq 5\%$. The upper red bar (where present) indicates the fraction of residues that have poor fit to the electron density. The numeric value is given above the bar.

Mol	Chain	Length	Quality of chain
1	A	696	<div> <div>4%</div> <div>60% 27% 6% 6%</div> </div>
1	B	696	<div> <div>6%</div> <div>61% 27% 6% 6%</div> </div>

2 Entry composition

There are 3 unique types of molecules in this entry. The entry contains 10477 atoms, of which 0 are hydrogens and 0 are deuteriums.

In the tables below, the ZeroOcc column contains the number of atoms modelled with zero occupancy, the AltConf column contains the number of residues with at least one atom in alternate conformation and the Trace column contains the number of residues modelled with at most 2 atoms.

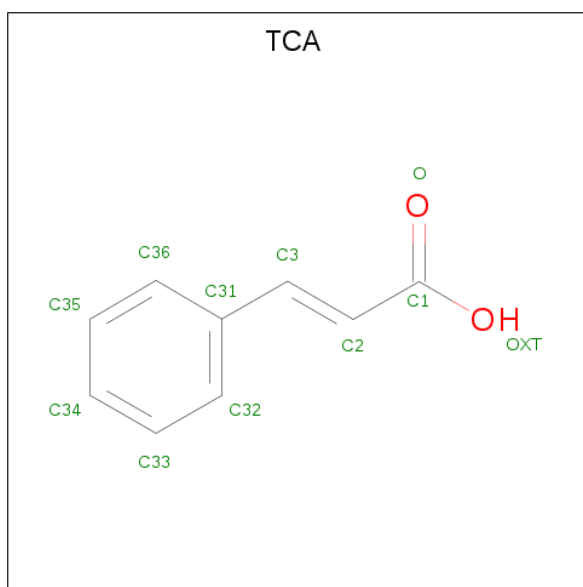
- Molecule 1 is a protein called Phenylalanine ammonia-lyase.

Mol	Chain	Residues	Atoms					ZeroOcc	AltConf	Trace
1	A	654	Total	C	N	O	S	0	2	0
			5086	3219	882	961	24			
1	B	656	Total	C	N	O	S	0	1	0
			5093	3225	882	962	24			

There are 10 discrepancies between the modelled and reference sequences:

Chain	Residue	Modelled	Actual	Comment	Reference
A	128	VAL	ALA	CONFLICT	UNP Q6GZ04
A	196	ILE	VAL	CONFLICT	UNP Q6GZ04
A	473	ASP	GLU	CONFLICT	UNP Q6GZ04
A	556	LYS	GLU	CONFLICT	UNP Q6GZ04
A	634	ASP	GLU	CONFLICT	UNP Q6GZ04
B	128	VAL	ALA	CONFLICT	UNP Q6GZ04
B	196	ILE	VAL	CONFLICT	UNP Q6GZ04
B	473	ASP	GLU	CONFLICT	UNP Q6GZ04
B	556	LYS	GLU	CONFLICT	UNP Q6GZ04
B	634	ASP	GLU	CONFLICT	UNP Q6GZ04

- Molecule 2 is PHENYLETHYLENECARBOXYLIC ACID (three-letter code: TCA) (formula: C₉H₈O₂).



Mol	Chain	Residues	Atoms			ZeroOcc	AltConf
2	A	1	Total	C	O	0	0
			11	9	2		
2	B	1	Total	C	O	0	0
			11	9	2		

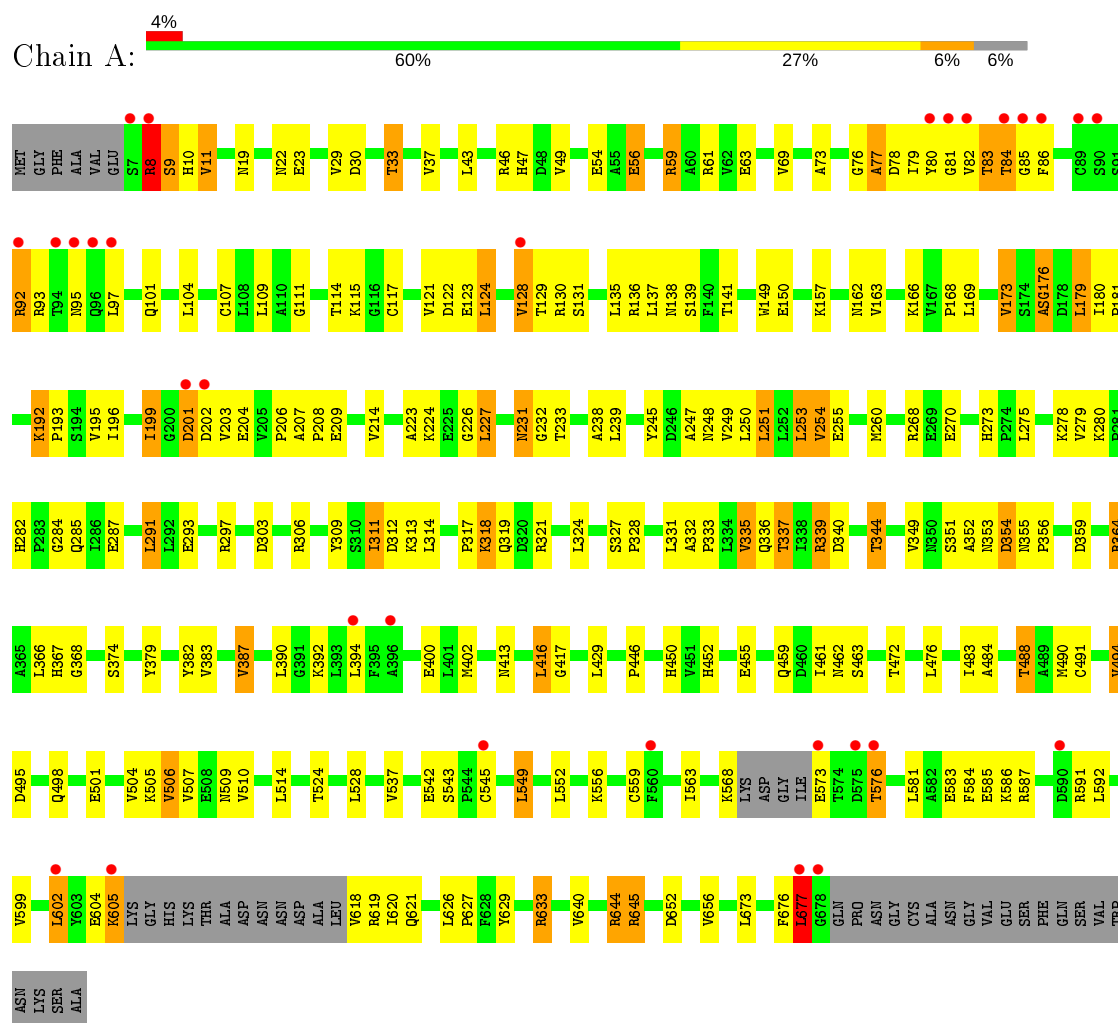
- Molecule 3 is water.

Mol	Chain	Residues	Atoms		ZeroOcc	AltConf
3	A	155	Total	O	0	0
			155	155		
3	B	121	Total	O	0	0
			121	121		

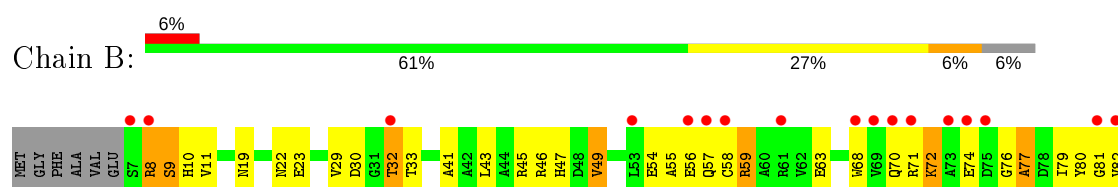
3 Residue-property plots

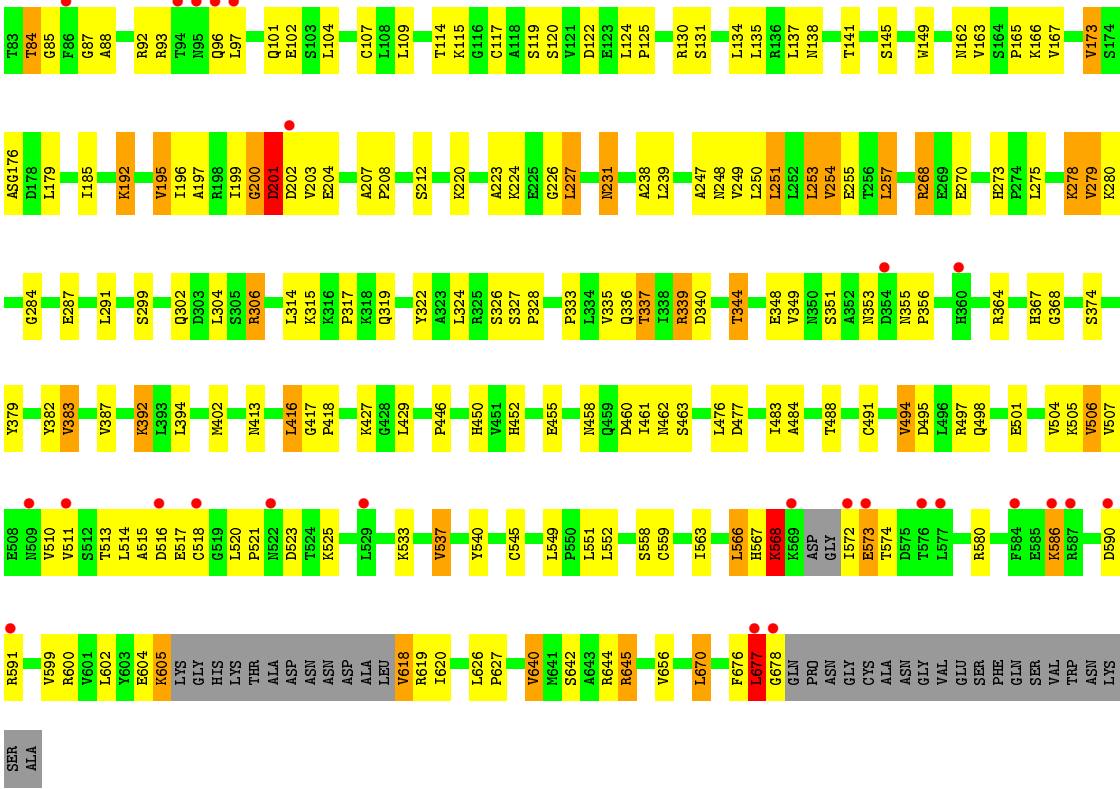
These plots are drawn for all protein, RNA and DNA chains in the entry. The first graphic for a chain summarises the proportions of the various outlier classes displayed in the second graphic. The second graphic shows the sequence view annotated by issues in geometry and electron density. Residues are color-coded according to the number of geometric quality criteria for which they contain at least one outlier: green = 0, yellow = 1, orange = 2 and red = 3 or more. A red dot above a residue indicates a poor fit to the electron density ($RSRZ > 2$). Stretches of 2 or more consecutive residues without any outlier are shown as a green connector. Residues present in the sample, but not in the model, are shown in grey.

• Molecule 1: Phenylalanine ammonia-lyase



• Molecule 1: Phenylalanine ammonia-lyase





4 Data and refinement statistics

Property	Value	Source
Space group	C 1 2 1	Depositor
Cell constants a, b, c, α , β , γ	181.73Å 76.11Å 120.39Å 90.00° 120.43° 90.00°	Depositor
Resolution (Å)	103.81 – 2.38 47.40 – 2.38	Depositor EDS
% Data completeness (in resolution range)	96.8 (103.81-2.38) 96.8 (47.40-2.38)	Depositor EDS
R_{merge}	(Not available)	Depositor
R_{sym}	(Not available)	Depositor
$\langle I/\sigma(I) \rangle$ ¹	2.25 (at 2.37Å)	Xtriage
Refinement program	REFMAC 5.5.0102	Depositor
R, R_{free}	0.183 , 0.239 0.183 , 0.237	Depositor DCC
R_{free} test set	5580 reflections (10.10%)	wwPDB-VP
Wilson B-factor (Å ²)	38.7	Xtriage
Anisotropy	0.427	Xtriage
Bulk solvent k_{sol} (e/Å ³), B_{sol} (Å ²)	0.36 , 42.1	EDS
L-test for twinning ²	$\langle L \rangle = 0.50$, $\langle L^2 \rangle = 0.33$	Xtriage
Estimated twinning fraction	No twinning to report.	Xtriage
F_o, F_c correlation	0.95	EDS
Total number of atoms	10477	wwPDB-VP
Average B, all atoms (Å ²)	47.0	wwPDB-VP

Xtriage's analysis on translational NCS is as follows: *The largest off-origin peak in the Patterson function is 7.26% of the height of the origin peak. No significant pseudotranslation is detected.*

¹Intensities estimated from amplitudes.

²Theoretical values of $\langle |L| \rangle$, $\langle L^2 \rangle$ for acentric reflections are 0.5, 0.333 respectively for untwinned datasets, and 0.375, 0.2 for perfectly twinned datasets.

5 Model quality [i](#)

5.1 Standard geometry [i](#)

Bond lengths and bond angles in the following residue types are not validated in this section: MDO, TCA

The Z score for a bond length (or angle) is the number of standard deviations the observed value is removed from the expected value. A bond length (or angle) with $|Z| > 5$ is considered an outlier worth inspection. RMSZ is the root-mean-square of all Z scores of the bond lengths (or angles).

Mol	Chain	Bond lengths		Bond angles	
		RMSZ	# Z >5	RMSZ	# Z >5
1	A	0.50	0/5160	0.64	0/6999
1	B	0.48	0/5166	0.62	0/7006
All	All	0.49	0/10326	0.63	0/14005

Chiral center outliers are detected by calculating the chiral volume of a chiral center and verifying if the center is modelled as a planar moiety or with the opposite hand. A planarity outlier is detected by checking planarity of atoms in a peptide group, atoms in a mainchain group or atoms of a sidechain that are expected to be planar.

Mol	Chain	#Chirality outliers	#Planarity outliers
1	A	0	2
1	B	0	2
All	All	0	4

There are no bond length outliers.

There are no bond angle outliers.

There are no chirality outliers.

All (4) planarity outliers are listed below:

Mol	Chain	Res	Type	Group
1	A	176	MDO	Mainchain,Peptide
1	B	176	MDO	Mainchain,Peptide

5.2 Too-close contacts [i](#)

In the following table, the Non-H and H(model) columns list the number of non-hydrogen atoms and hydrogen atoms in the chain respectively. The H(added) column lists the number of hydrogen atoms added and optimized by MolProbity. The Clashes column lists the number of clashes within the asymmetric unit, whereas Symm-Clashes lists symmetry related clashes.

Mol	Chain	Non-H	H(model)	H(added)	Clashes	Symm-Clashes
1	A	5086	0	5146	224	0
1	B	5093	0	5164	211	1
2	A	11	0	7	1	0
2	B	11	0	7	2	0
3	A	155	0	0	7	0
3	B	121	0	0	8	0
All	All	10477	0	10324	410	1

The all-atom clashscore is defined as the number of clashes found per 1000 atoms (including hydrogen atoms). The all-atom clashscore for this structure is 20.

The worst 5 of 410 close contacts within the same asymmetric unit are listed below, sorted by their clash magnitude.

Atom-1	Atom-2	Interatomic distance (Å)	Clash overlap (Å)
1:A:76:GLY:CA	1:A:77:ALA:HB2	1.79	1.13
1:A:402:MET:HE3	1:A:413:ASN:HA	1.13	1.12
1:A:76:GLY:HA2	1:A:77:ALA:HB2	1.12	1.10
1:B:572:ILE:HG13	1:B:573:GLU:H	1.03	1.10
1:B:506:VAL:HG11	1:B:599:VAL:HG21	1.26	1.08

All (1) symmetry-related close contacts are listed below. The label for Atom-2 includes the symmetry operator and encoded unit-cell translations to be applied.

Atom-1	Atom-2	Interatomic distance (Å)	Clash overlap (Å)
1:B:119:SER:OG	1:B:477:ASP:OD2[2_556]	2.15	0.05

5.3 Torsion angles [i](#)

5.3.1 Protein backbone [i](#)

In the following table, the Percentiles column shows the percent Ramachandran outliers of the chain as a percentile score with respect to all X-ray entries followed by that with respect to entries of similar resolution.

The Analysed column shows the number of residues for which the backbone conformation was analysed, and the total number of residues.

Mol	Chain	Analysed	Favoured	Allowed	Outliers	Percentiles
1	A	649/696 (93%)	618 (95%)	23 (4%)	8 (1%)	13 17
1	B	650/696 (93%)	602 (93%)	37 (6%)	11 (2%)	9 10

Continued on next page...

Continued from previous page...

Mol	Chain	Analysed	Favoured	Allowed	Outliers	Percentiles	
All	All	1299/1392 (93%)	1220 (94%)	60 (5%)	19 (2%)	10	12

5 of 19 Ramachandran outliers are listed below:

Mol	Chain	Res	Type
1	A	9	SER
1	A	77	ALA
1	A	83	THR
1	A	677	LEU
1	B	9	SER

5.3.2 Protein sidechains ⓘ

In the following table, the Percentiles column shows the percent sidechain outliers of the chain as a percentile score with respect to all X-ray entries followed by that with respect to entries of similar resolution.

The Analysed column shows the number of residues for which the sidechain conformation was analysed, and the total number of residues.

Mol	Chain	Analysed	Rotameric	Outliers	Percentiles	
1	A	556/586 (95%)	492 (88%)	64 (12%)	5	6
1	B	557/586 (95%)	486 (87%)	71 (13%)	4	5
All	All	1113/1172 (95%)	978 (88%)	135 (12%)	5	5

5 of 135 residues with a non-rotameric sidechain are listed below:

Mol	Chain	Res	Type
1	A	644	ARG
1	B	107	CYS
1	B	568	LYS
1	A	645	ARG
1	B	54	GLU

Some sidechains can be flipped to improve hydrogen bonding and reduce clashes. 5 of 39 such sidechains are listed below:

Mol	Chain	Res	Type
1	A	498	GLN
1	B	47	HIS
1	B	557	GLN

Continued on next page...

Continued from previous page...

Mol	Chain	Res	Type
1	A	594	ASN
1	B	10	HIS

5.3.3 RNA ⓘ

There are no RNA molecules in this entry.

5.4 Non-standard residues in protein, DNA, RNA chains ⓘ

2 non-standard protein/DNA/RNA residues are modelled in this entry.

In the following table, the Counts columns list the number of bonds (or angles) for which Mogul statistics could be retrieved, the number of bonds (or angles) that are observed in the model and the number of bonds (or angles) that are defined in the Chemical Component Dictionary. The Link column lists molecule types, if any, to which the group is linked. The Z score for a bond length (or angle) is the number of standard deviations the observed value is removed from the expected value. A bond length (or angle) with $|Z| > 2$ is considered an outlier worth inspection. RMSZ is the root-mean-square of all Z scores of the bond lengths (or angles).

Mol	Type	Chain	Res	Link	Bond lengths			Bond angles		
					Counts	RMSZ	# Z > 2	Counts	RMSZ	# Z > 2
1	MDO	B	176	1	12,13,14	3.69	4 (33%)	15,18,20	6.71	8 (53%)
1	MDO	A	176	1	12,13,14	3.74	4 (33%)	15,18,20	6.50	6 (40%)

In the following table, the Chirals column lists the number of chiral outliers, the number of chiral centers analysed, the number of these observed in the model and the number defined in the Chemical Component Dictionary. Similar counts are reported in the Torsion and Rings columns. '-' means no outliers of that kind were identified.

Mol	Type	Chain	Res	Link	Chirals	Torsions	Rings
1	MDO	B	176	1	-	2/4/23/24	0/1/1/1
1	MDO	A	176	1	-	2/4/23/24	0/1/1/1

The worst 5 of 8 bond length outliers are listed below:

Mol	Chain	Res	Type	Atoms	Z	Observed(Å)	Ideal(Å)
1	A	176	MDO	O2-C2	11.33	1.47	1.23
1	B	176	MDO	O2-C2	10.80	1.45	1.23
1	B	176	MDO	C1-N2	4.36	1.38	1.32
1	B	176	MDO	C2-N3	-3.90	1.30	1.39
1	A	176	MDO	C1-N2	3.80	1.37	1.32

The worst 5 of 14 bond angle outliers are listed below:

Mol	Chain	Res	Type	Atoms	Z	Observed(°)	Ideal(°)
1	B	176	MDO	CA2-C2-N3	20.59	113.11	103.37
1	A	176	MDO	CA2-C2-N3	19.11	112.41	103.37
1	B	176	MDO	C2-CA2-N2	-11.21	101.08	108.93
1	A	176	MDO	C2-CA2-N2	-10.48	101.59	108.93
1	A	176	MDO	O2-C2-CA2	-9.53	125.61	130.96

There are no chirality outliers.

All (4) torsion outliers are listed below:

Mol	Chain	Res	Type	Atoms
1	B	176	MDO	N2-C1-CA-CB
1	A	176	MDO	N2-C1-CA-CB
1	B	176	MDO	N3-C1-CA-CB
1	A	176	MDO	C-CA3-N3-C2

There are no ring outliers.

1 monomer is involved in 1 short contact:

Mol	Chain	Res	Type	Clashes	Symm-Clashes
1	A	176	MDO	1	0

5.5 Carbohydrates [i](#)

There are no carbohydrates in this entry.

5.6 Ligand geometry [i](#)

2 ligands are modelled in this entry.

In the following table, the Counts columns list the number of bonds (or angles) for which Mogul statistics could be retrieved, the number of bonds (or angles) that are observed in the model and the number of bonds (or angles) that are defined in the Chemical Component Dictionary. The Link column lists molecule types, if any, to which the group is linked. The Z score for a bond length (or angle) is the number of standard deviations the observed value is removed from the expected value. A bond length (or angle) with $|Z| > 2$ is considered an outlier worth inspection. RMSZ is the root-mean-square of all Z scores of the bond lengths (or angles).

Mol	Type	Chain	Res	Link	Bond lengths			Bond angles		
					Counts	RMSZ	$\# Z > 2$	Counts	RMSZ	$\# Z > 2$
2	TCA	A	699	-	8,11,11	0.36	0	10,13,13	1.40	2 (20%)

Mol	Type	Chain	Res	Link	Bond lengths			Bond angles		
					Counts	RMSZ	# Z > 2	Counts	RMSZ	# Z > 2
2	TCA	B	699	-	8,11,11	0.39	0	10,13,13	1.23	1 (10%)

In the following table, the Chirals column lists the number of chiral outliers, the number of chiral centers analysed, the number of these observed in the model and the number defined in the Chemical Component Dictionary. Similar counts are reported in the Torsion and Rings columns. '-' means no outliers of that kind were identified.

Mol	Type	Chain	Res	Link	Chirals	Torsions	Rings
2	TCA	A	699	-	-	2/3/5/5	0/1/1/1
2	TCA	B	699	-	-	0/3/5/5	0/1/1/1

There are no bond length outliers.

All (3) bond angle outliers are listed below:

Mol	Chain	Res	Type	Atoms	Z	Observed(°)	Ideal(°)
2	A	699	TCA	C31-C3-C2	-3.26	113.01	125.87
2	B	699	TCA	C36-C31-C32	2.35	121.12	117.64
2	A	699	TCA	C36-C31-C32	2.05	120.68	117.64

There are no chirality outliers.

All (2) torsion outliers are listed below:

Mol	Chain	Res	Type	Atoms
2	A	699	TCA	C2-C3-C31-C32
2	A	699	TCA	C2-C3-C31-C36

There are no ring outliers.

2 monomers are involved in 3 short contacts:

Mol	Chain	Res	Type	Clashes	Symm-Clashes
2	A	699	TCA	1	0
2	B	699	TCA	2	0

5.7 Other polymers

There are no such residues in this entry.

5.8 Polymer linkage issues ⓘ

There are no chain breaks in this entry.

6 Fit of model and data [i](#)

6.1 Protein, DNA and RNA chains [i](#)

In the following table, the column labelled ‘#RSRZ> 2’ contains the number (and percentage) of RSRZ outliers, followed by percent RSRZ outliers for the chain as percentile scores relative to all X-ray entries and entries of similar resolution. The OWAB column contains the minimum, median, 95th percentile and maximum values of the occupancy-weighted average B-factor per residue. The column labelled ‘Q< 0.9’ lists the number of (and percentage) of residues with an average occupancy less than 0.9.

Mol	Chain	Analysed	<RSRZ>	#RSRZ>2	OWAB(Å ²)	Q<0.9
1	A	653/696 (93%)	0.13	30 (4%) 32 35	28, 43, 68, 93	2 (0%)
1	B	655/696 (94%)	0.31	43 (6%) 18 20	28, 46, 74, 93	2 (0%)
All	All	1308/1392 (93%)	0.22	73 (5%) 24 27	28, 44, 73, 93	4 (0%)

The worst 5 of 73 RSRZ outliers are listed below:

Mol	Chain	Res	Type	RSRZ
1	B	7	SER	7.4
1	B	678	GLY	6.2
1	A	7	SER	5.9
1	A	678	GLY	5.7
1	B	572	ILE	5.6

6.2 Non-standard residues in protein, DNA, RNA chains [i](#)

In the following table, the Atoms column lists the number of modelled atoms in the group and the number defined in the chemical component dictionary. The B-factors column lists the minimum, median, 95th percentile and maximum values of B factors of atoms in the group. The column labelled ‘Q< 0.9’ lists the number of atoms with occupancy less than 0.9.

Mol	Type	Chain	Res	Atoms	RSCC	RSR	B-factors(Å ²)	Q<0.9
1	MDO	B	176	13/14	0.96	0.16	33,35,36,37	0
1	MDO	A	176	13/14	0.98	0.12	34,36,37,37	0

6.3 Carbohydrates [i](#)

There are no carbohydrates in this entry.

6.4 Ligands [i](#)

In the following table, the Atoms column lists the number of modelled atoms in the group and the number defined in the chemical component dictionary. The B-factors column lists the minimum, median, 95th percentile and maximum values of B factors of atoms in the group. The column labelled 'Q< 0.9' lists the number of atoms with occupancy less than 0.9.

Mol	Type	Chain	Res	Atoms	RSCC	RSR	B-factors(\AA^2)	Q<0.9
2	TCA	A	699	11/11	0.93	0.14	46,49,49,50	0
2	TCA	B	699	11/11	0.93	0.17	60,61,62,62	0

6.5 Other polymers [i](#)

There are no such residues in this entry.