



# Full wwPDB X-ray Structure Validation Report ⓘ

Aug 10, 2020 – 11:00 AM BST

PDB ID : 6O1Y  
Title : Structure of pCW3 conjugation coupling protein TcpA monomeric form with ATP  
Authors : Traore, D.A.K.; Ahktar, N.; Torres, V.T.; Adams, V.; Coulibaly, F.; Panjkar, S.; Caradoc-Davies, T.T.; Rood, J.I.; Whisstock, J.C.  
Deposited on : 2019-02-22  
Resolution : 2.70 Å(reported)

This is a Full wwPDB X-ray Structure Validation Report for a publicly released PDB entry.

We welcome your comments at [validation@mail.wwpdb.org](mailto:validation@mail.wwpdb.org)

A user guide is available at

<https://www.wwpdb.org/validation/2017/XrayValidationReportHelp>

with specific help available everywhere you see the ⓘ symbol.

---

The following versions of software and data (see [references ⓘ](#)) were used in the production of this report:

MolProbity : 4.02b-467  
Mogul : 1.8.5 (274361), CSD as541be (2020)  
Xtriage (Phenix) : 1.13  
EDS : 2.13.1  
buster-report : 1.1.7 (2018)  
Percentile statistics : 20191225.v01 (using entries in the PDB archive December 25th 2019)  
Refmac : 5.8.0158  
CCP4 : 7.0.044 (Gargrove)  
Ideal geometry (proteins) : Engh & Huber (2001)  
Ideal geometry (DNA, RNA) : Parkinson et al. (1996)  
Validation Pipeline (wwPDB-VP) : 2.13.1

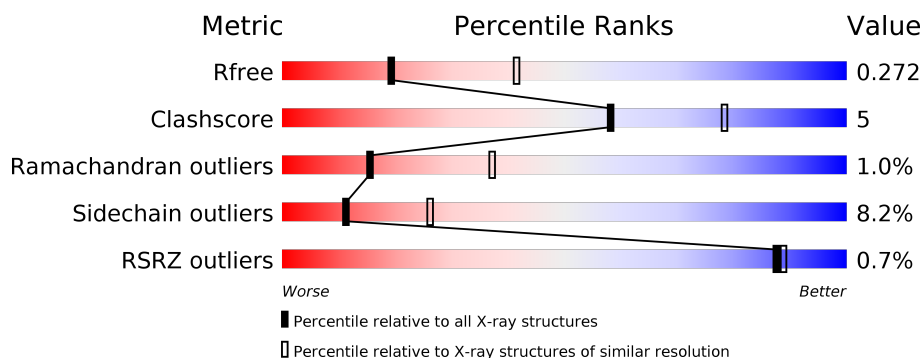
# 1 Overall quality at a glance

The following experimental techniques were used to determine the structure:

## *X-RAY DIFFRACTION*

The reported resolution of this entry is 2.70 Å.

Percentile scores (ranging between 0-100) for global validation metrics of the entry are shown in the following graphic. The table shows the number of entries on which the scores are based.



Metric	Whole archive (#Entries)	Similar resolution (#Entries, resolution range(Å))
$R_{free}$	130704	2808 (2.70-2.70)
Clashscore	141614	3122 (2.70-2.70)
Ramachandran outliers	138981	3069 (2.70-2.70)
Sidechain outliers	138945	3069 (2.70-2.70)
RSRZ outliers	127900	2737 (2.70-2.70)

The table below summarises the geometric issues observed across the polymeric chains and their fit to the electron density. The red, orange, yellow and green segments on the lower bar indicate the fraction of residues that contain outliers for  $\geq 3$ , 2, 1 and 0 types of geometric quality criteria respectively. A grey segment represents the fraction of residues that are not modelled. The numeric value for each fraction is indicated below the corresponding segment, with a dot representing fractions  $\leq 5\%$ . The upper red bar (where present) indicates the fraction of residues that have poor fit to the electron density. The numeric value is given above the bar.

Mol	Chain	Length	Quality of chain
1	A	359	<div> <div>%</div> <div> <div></div> <div>82%</div> <div>16%</div> <div>..</div> </div> </div>
1	B	359	<div> <div>%</div> <div> <div></div> <div>75%</div> <div>22%</div> <div>..</div> </div> </div>

## 2 Entry composition [i](#)

There are 4 unique types of molecules in this entry. The entry contains 5908 atoms, of which 24 are hydrogens and 0 are deuteriums.

In the tables below, the ZeroOcc column contains the number of atoms modelled with zero occupancy, the AltConf column contains the number of residues with at least one atom in alternate conformation and the Trace column contains the number of residues modelled with at most 2 atoms.

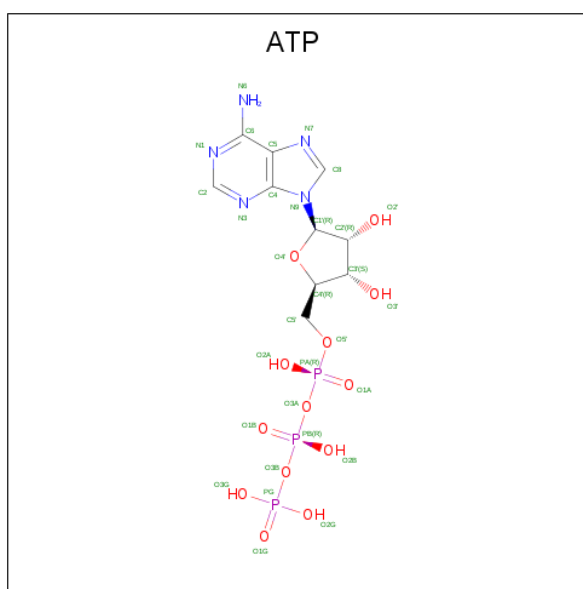
- Molecule 1 is a protein called DNA translocase coupling protein.

Mol	Chain	Residues	Atoms					ZeroOcc	AltConf	Trace
1	A	353	Total	C	N	O	S	0	0	0
			2794	1788	473	526	7			
1	B	355	Total	C	N	O	S	0	0	0
			2812	1799	476	530	7			

There are 2 discrepancies between the modelled and reference sequences:

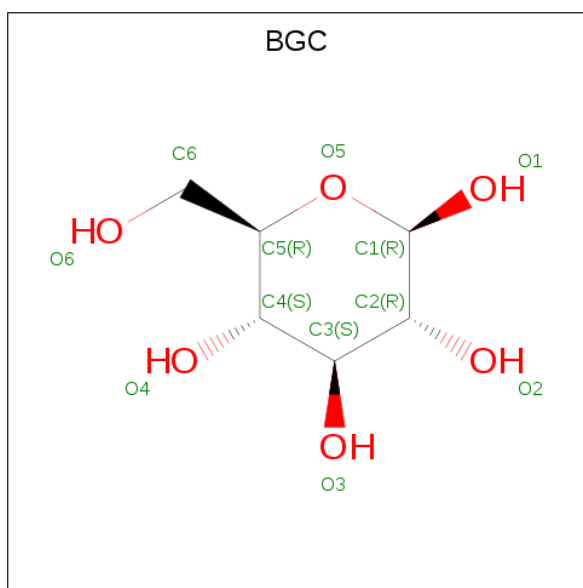
Chain	Residue	Modelled	Actual	Comment	Reference
A	101	SER	-	expression tag	UNP Q1PLI0
B	101	SER	-	expression tag	UNP Q1PLI0

- Molecule 2 is ADENOSINE-5'-TRIPHOSPHATE (three-letter code: ATP) (formula:  $C_{10}H_{16}N_5O_{13}P_3$ ) (labeled as "Ligand of Interest" by author).



Mol	Chain	Residues	Atoms					ZeroOcc	AltConf
2	A	1	Total	C	H	N	O	0	0
			43	10	12	5	13		

- Molecule 3 is beta-D-glucopyranose (three-letter code: BGC) (formula: C<sub>6</sub>H<sub>12</sub>O<sub>6</sub>).



Mol	Chain	Residues	Atoms				ZeroOcc	AltConf
3	A	1	Total	C	H	O	0	0
			24	6	12	6		

- Molecule 4 is water.

Mol	Chain	Residues	Atoms		ZeroOcc	AltConf
4	A	92	Total	O	0	0
			92	92		
4	B	143	Total	O	0	0
			143	143		



## 4 Data and refinement statistics

Property	Value	Source
Space group	P 21 21 21	Depositor
Cell constants a, b, c, $\alpha$ , $\beta$ , $\gamma$	53.45Å 108.66Å 142.38Å 90.00° 90.00° 90.00°	Depositor
Resolution (Å)	43.49 – 2.70 45.45 – 2.70	Depositor EDS
% Data completeness (in resolution range)	99.8 (43.49-2.70) 99.8 (45.45-2.70)	Depositor EDS
$R_{merge}$	0.25	Depositor
$R_{sym}$	(Not available)	Depositor
$\langle I/\sigma(I) \rangle$ <sup>1</sup>	1.23 (at 2.69Å)	Xtriage
Refinement program	BUSTER 2.10.3	Depositor
R, $R_{free}$	0.181 , 0.258 0.192 , 0.272	Depositor DCC
$R_{free}$ test set	1165 reflections (4.94%)	wwPDB-VP
Wilson B-factor (Å <sup>2</sup> )	53.3	Xtriage
Anisotropy	0.426	Xtriage
Bulk solvent $k_{sol}$ (e/Å <sup>3</sup> ), $B_{sol}$ (Å <sup>2</sup> )	0.34 , 72.3	EDS
L-test for twinning <sup>2</sup>	$\langle  L  \rangle = 0.50$ , $\langle L^2 \rangle = 0.33$	Xtriage
Estimated twinning fraction	No twinning to report.	Xtriage
$F_o, F_c$ correlation	0.95	EDS
Total number of atoms	5908	wwPDB-VP
Average B, all atoms (Å <sup>2</sup> )	62.0	wwPDB-VP

Xtriage's analysis on translational NCS is as follows: *The largest off-origin peak in the Patterson function is 4.51% of the height of the origin peak. No significant pseudotranslation is detected.*

<sup>1</sup>Intensities estimated from amplitudes.

<sup>2</sup>Theoretical values of  $\langle |L| \rangle$ ,  $\langle L^2 \rangle$  for acentric reflections are 0.5, 0.333 respectively for untwinned datasets, and 0.375, 0.2 for perfectly twinned datasets.

## 5 Model quality

### 5.1 Standard geometry

Bond lengths and bond angles in the following residue types are not validated in this section: BGC, ATP

The Z score for a bond length (or angle) is the number of standard deviations the observed value is removed from the expected value. A bond length (or angle) with  $|Z| > 5$  is considered an outlier worth inspection. RMSZ is the root-mean-square of all Z scores of the bond lengths (or angles).

Mol	Chain	Bond lengths		Bond angles	
		RMSZ	# Z  >5	RMSZ	# Z  >5
1	A	0.48	0/2837	0.72	0/3816
1	B	0.53	0/2855	0.76	0/3839
All	All	0.51	0/5692	0.74	0/7655

There are no bond length outliers.

There are no bond angle outliers.

There are no chirality outliers.

There are no planarity outliers.

### 5.2 Too-close contacts

In the following table, the Non-H and H(model) columns list the number of non-hydrogen atoms and hydrogen atoms in the chain respectively. The H(added) column lists the number of hydrogen atoms added and optimized by MolProbity. The Clashes column lists the number of clashes within the asymmetric unit, whereas Symm-Clashes lists symmetry related clashes.

Mol	Chain	Non-H	H(model)	H(added)	Clashes	Symm-Clashes
1	A	2794	0	2883	22	0
1	B	2812	0	2902	33	0
2	A	31	12	12	1	0
3	A	12	12	12	0	0
4	A	92	0	0	0	0
4	B	143	0	0	0	0
All	All	5884	24	5809	55	0

The all-atom clashscore is defined as the number of clashes found per 1000 atoms (including hydrogen atoms). The all-atom clashscore for this structure is 5.

All (55) close contacts within the same asymmetric unit are listed below, sorted by their clash

magnitude.

Atom-1	Atom-2	Interatomic distance (Å)	Clash overlap (Å)
1:A:444:ASP:HB3	1:A:447:LYS:HB2	1.57	0.84
1:B:231:HIS:HD2	1:B:374:LEU:H	1.28	0.81
1:A:332:VAL:HG12	1:A:375:CYS:HB2	1.61	0.80
1:B:124:ALA:HB3	1:B:150:MET:HB3	1.66	0.74
1:A:137:ASP:O	1:A:141:ARG:HA	1.96	0.66
1:B:253:LEU:HD12	1:B:330:ILE:HD12	1.77	0.65
1:A:246:LEU:HD22	1:A:375:CYS:HB3	1.78	0.65
1:B:122:VAL:HG13	1:B:126:SER:HA	1.83	0.60
1:B:129:PRO:HB3	1:B:149:SER:HB3	1.85	0.57
1:A:213:VAL:HG22	1:A:223:LYS:HG2	1.87	0.57
1:B:231:HIS:CD2	1:B:374:LEU:H	2.17	0.56
1:B:174:ILE:HG12	1:B:185:ILE:HG12	1.86	0.55
1:B:342:LYS:HB3	1:B:353:LEU:HD12	1.89	0.54
1:B:119:LEU:HD11	1:B:162:GLN:HB3	1.89	0.53
1:A:336:LEU:HD21	1:A:390:ILE:HD13	1.91	0.52
1:B:389:GLN:O	1:B:393:ASN:HB2	2.10	0.51
1:B:167:LEU:HB2	1:B:169:ILE:HG12	1.93	0.51
1:B:232:ILE:HA	1:B:396:VAL:HB	1.92	0.50
1:B:198:LEU:HD12	1:B:441:PHE:CD1	2.47	0.49
1:B:226:LEU:CD1	1:B:253:LEU:HD11	2.43	0.48
1:B:345:VAL:HG23	1:B:350:ARG:HG2	1.96	0.48
1:A:454:ILE:HA	1:A:457:LEU:HD12	1.95	0.47
1:A:177:GLY:HA3	1:A:182:ILE:HG23	1.97	0.47
1:A:261:TYR:HE2	1:A:329:ILE:HD13	1.81	0.46
1:B:336:LEU:HD22	1:B:376:ILE:HG21	1.98	0.46
1:B:428:LEU:HD22	1:B:435:THR:HG22	1.98	0.46
1:A:286:ASP:O	1:A:290:LYS:HG2	2.15	0.45
1:B:409:GLU:O	1:B:413:SER:HA	2.16	0.45
1:B:201:ASP:HB3	1:B:203:LYS:HG2	1.98	0.45
1:B:349:THR:HA	1:B:352:LYS:HD2	1.99	0.45
1:A:311:SER:HB2	1:A:316:GLU:HB3	2.00	0.44
1:B:230:PRO:HG3	1:B:368:ARG:HA	1.99	0.44
1:B:388:GLY:HA2	1:B:391:LYS:HB3	2.00	0.44
1:A:198:LEU:CD2	1:A:216:GLN:HB2	2.48	0.43
1:B:246:LEU:HD22	1:B:375:CYS:HB3	2.00	0.43
1:B:248:CYS:O	1:B:252:GLN:HG3	2.19	0.42
1:A:352:LYS:O	1:A:356:ILE:HG12	2.20	0.42
1:A:289:GLU:HA	1:A:356:ILE:CD1	2.50	0.42
1:A:186:LYS:HE2	1:A:419:ASP:OD1	2.19	0.42
1:B:172:ILE:HG21	1:B:419:ASP:O	2.19	0.42
1:B:209:GLU:HG2	1:B:256:GLN:HB3	2.02	0.42

*Continued on next page...*



Continued from previous page...

Atom-1	Atom-2	Interatomic distance (Å)	Clash overlap (Å)
1:A:300:ALA:HA	1:A:303:LEU:HD12	2.03	0.41
1:B:381:PRO:HG2	1:B:407:ALA:HB1	2.03	0.41
1:A:285:VAL:HG11	1:A:349:THR:HG23	2.03	0.41
1:B:378:VAL:HG21	1:B:386:ILE:HD11	2.02	0.41
1:B:408:SER:HB2	1:B:417:ALA:HB3	2.02	0.41
1:A:169:ILE:HD12	1:A:171:ILE:HG13	2.03	0.41
1:B:232:ILE:HD13	1:B:249:ILE:HD13	2.03	0.41
1:B:153:ILE:HD12	1:B:183:VAL:HG12	2.03	0.41
1:A:332:VAL:HG12	1:A:375:CYS:CB	2.43	0.40
1:A:254:LEU:HB3	1:A:454:ILE:HG21	2.04	0.40
1:B:452:ASN:O	1:B:456:LYS:HG3	2.21	0.40
1:A:243:SER:HB2	2:A:501:ATP:O2G	2.22	0.40
1:B:195:PRO:HG2	1:B:198:LEU:HD22	2.02	0.40
1:A:428:LEU:HD23	1:A:428:LEU:HA	1.95	0.40

There are no symmetry-related clashes.

## 5.3 Torsion angles ⓘ

### 5.3.1 Protein backbone ⓘ

In the following table, the Percentiles column shows the percent Ramachandran outliers of the chain as a percentile score with respect to all X-ray entries followed by that with respect to entries of similar resolution.

The Analysed column shows the number of residues for which the backbone conformation was analysed, and the total number of residues.

Mol	Chain	Analysed	Favoured	Allowed	Outliers	Percentiles	
1	A	351/359 (98%)	327 (93%)	22 (6%)	2 (1%)	25	50
1	B	353/359 (98%)	335 (95%)	13 (4%)	5 (1%)	11	28
All	All	704/718 (98%)	662 (94%)	35 (5%)	7 (1%)	15	37

All (7) Ramachandran outliers are listed below:

Mol	Chain	Res	Type
1	A	322	GLU
1	B	124	ALA
1	B	346	ASP
1	B	123	GLY

Continued on next page...

*Continued from previous page...*

Mol	Chain	Res	Type
1	A	341	ASP
1	B	107	LYS
1	B	368	ARG

### 5.3.2 Protein sidechains ⓘ

In the following table, the Percentiles column shows the percent sidechain outliers of the chain as a percentile score with respect to all X-ray entries followed by that with respect to entries of similar resolution.

The Analysed column shows the number of residues for which the sidechain conformation was analysed, and the total number of residues.

Mol	Chain	Analysed	Rotameric	Outliers	Percentiles	
1	A	305/311 (98%)	283 (93%)	22 (7%)	14	34
1	B	307/311 (99%)	279 (91%)	28 (9%)	9	21
All	All	612/622 (98%)	562 (92%)	50 (8%)	11	26

All (50) residues with a non-rotameric sidechain are listed below:

Mol	Chain	Res	Type
1	A	107	LYS
1	A	144	GLU
1	A	148	GLU
1	A	175	GLU
1	A	219	SER
1	A	229	SER
1	A	255	LYS
1	A	278	VAL
1	A	304	LYS
1	A	311	SER
1	A	319	LYS
1	A	368	ARG
1	A	387	THR
1	A	390	ILE
1	A	398	ILE
1	A	416	LYS
1	A	424	LYS
1	A	434	ASP
1	A	435	THR
1	A	436	VAL

*Continued on next page...*

*Continued from previous page...*

Mol	Chain	Res	Type
1	A	445	ASP
1	A	452	ASN
1	B	118	GLN
1	B	122	VAL
1	B	130	ILE
1	B	153	ILE
1	B	165	THR
1	B	176	GLN
1	B	186	LYS
1	B	191	ASP
1	B	198	LEU
1	B	208	GLN
1	B	219	SER
1	B	238	THR
1	B	242	LYS
1	B	243	SER
1	B	259	ILE
1	B	273	LEU
1	B	284	GLU
1	B	286	ASP
1	B	291	LEU
1	B	324	GLU
1	B	345	VAL
1	B	349	THR
1	B	378	VAL
1	B	380	ARG
1	B	410	ILE
1	B	420	LEU
1	B	434	ASP
1	B	446	ASP

Some sidechains can be flipped to improve hydrogen bonding and reduce clashes. All (1) such sidechains are listed below:

Mol	Chain	Res	Type
1	B	231	HIS

### 5.3.3 RNA ⓘ

There are no RNA molecules in this entry.

## 5.4 Non-standard residues in protein, DNA, RNA chains ⓘ

There are no non-standard protein/DNA/RNA residues in this entry.

## 5.5 Carbohydrates ⓘ

There are no monosaccharides in this entry.

## 5.6 Ligand geometry ⓘ

2 ligands are modelled in this entry.

In the following table, the Counts columns list the number of bonds (or angles) for which Mogul statistics could be retrieved, the number of bonds (or angles) that are observed in the model and the number of bonds (or angles) that are defined in the Chemical Component Dictionary. The Link column lists molecule types, if any, to which the group is linked. The Z score for a bond length (or angle) is the number of standard deviations the observed value is removed from the expected value. A bond length (or angle) with  $|Z| > 2$  is considered an outlier worth inspection. RMSZ is the root-mean-square of all Z scores of the bond lengths (or angles).

Mol	Type	Chain	Res	Link	Bond lengths			Bond angles		
					Counts	RMSZ	$\# Z  > 2$	Counts	RMSZ	$\# Z  > 2$
3	BGC	A	502	-	12,12,12	0.18	0	17,17,17	0.21	0
2	ATP	A	501	-	26,33,33	0.58	0	31,52,52	0.67	1 (3%)

In the following table, the Chirals column lists the number of chiral outliers, the number of chiral centers analysed, the number of these observed in the model and the number defined in the Chemical Component Dictionary. Similar counts are reported in the Torsion and Rings columns. '-' means no outliers of that kind were identified.

Mol	Type	Chain	Res	Link	Chirals	Torsions	Rings
3	BGC	A	502	-	-	0/2/22/22	0/1/1/1
2	ATP	A	501	-	-	7/18/38/38	0/3/3/3

There are no bond length outliers.

All (1) bond angle outliers are listed below:

Mol	Chain	Res	Type	Atoms	Z	Observed(°)	Ideal(°)
2	A	501	ATP	C5-C6-N6	2.14	123.60	120.35

There are no chirality outliers.

All (7) torsion outliers are listed below:

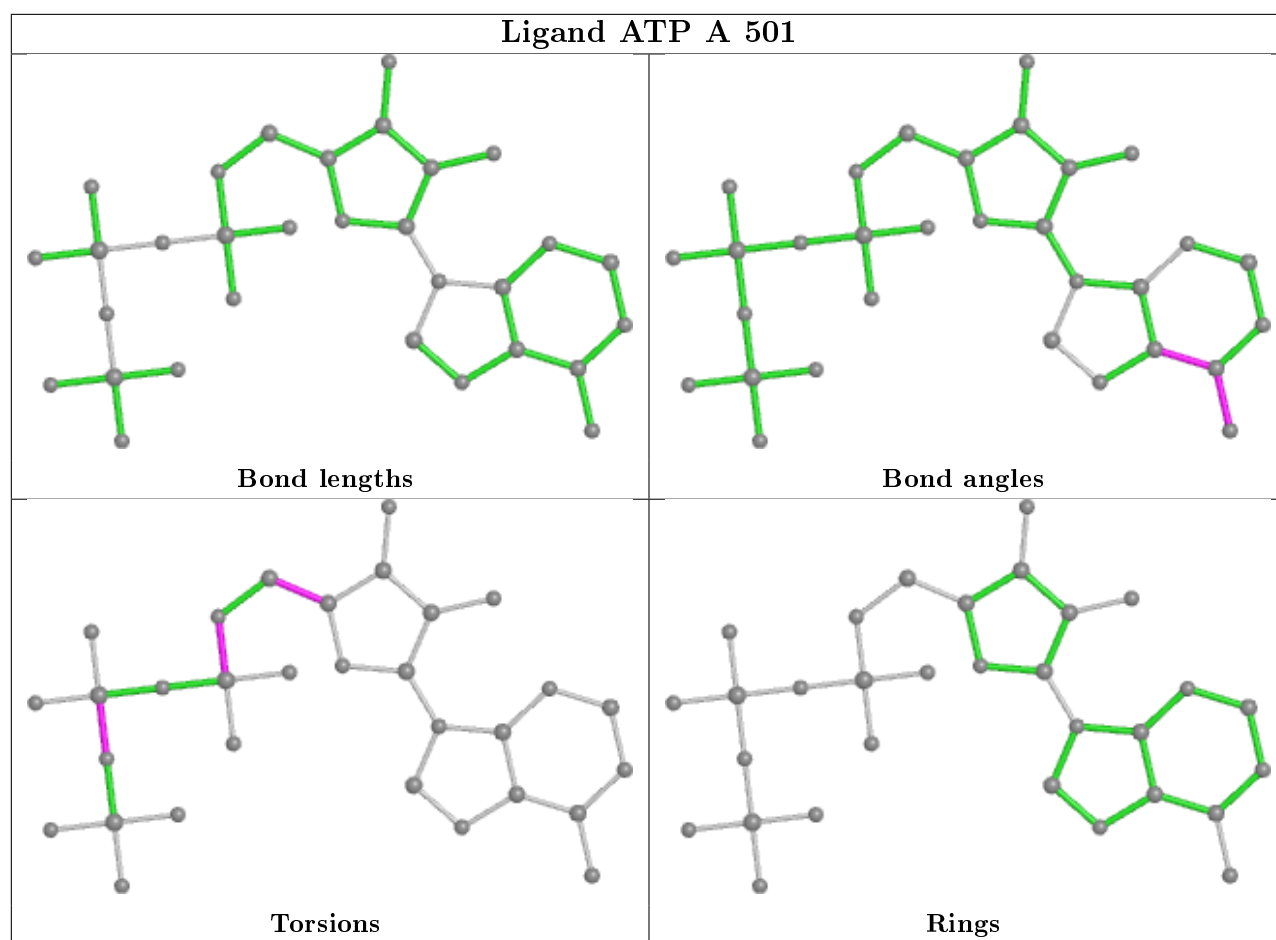
Mol	Chain	Res	Type	Atoms
2	A	501	ATP	C5'-O5'-PA-O1A
2	A	501	ATP	C5'-O5'-PA-O2A
2	A	501	ATP	C5'-O5'-PA-O3A
2	A	501	ATP	O4'-C4'-C5'-O5'
2	A	501	ATP	C3'-C4'-C5'-O5'
2	A	501	ATP	PG-O3B-PB-O2B
2	A	501	ATP	PG-O3B-PB-O1B

There are no ring outliers.

1 monomer is involved in 1 short contact:

Mol	Chain	Res	Type	Clashes	Symm-Clashes
2	A	501	ATP	1	0

The following is a two-dimensional graphical depiction of Mogul quality analysis of bond lengths, bond angles, torsion angles, and ring geometry for all instances of the Ligand of Interest. In addition, ligands with molecular weight > 250 and outliers as shown on the validation Tables will also be included. For torsion angles, if less than 5% of the Mogul distribution of torsion angles is within 10 degrees of the torsion angle in question, then that torsion angle is considered an outlier. Any bond that is central to one or more torsion angles identified as an outlier by Mogul will be highlighted in the graph. For rings, the root-mean-square deviation (RMSD) between the ring in question and similar rings identified by Mogul is calculated over all ring torsion angles. If the average RMSD is greater than 60 degrees and the minimal RMSD between the ring in question and any Mogul-identified rings is also greater than 60 degrees, then that ring is considered an outlier. The outliers are highlighted in purple. The color gray indicates Mogul did not find sufficient equivalents in the CSD to analyse the geometry.



## 5.7 Other polymers [i](#)

There are no such residues in this entry.

## 5.8 Polymer linkage issues [i](#)

There are no chain breaks in this entry.

## 6 Fit of model and data [i](#)

### 6.1 Protein, DNA and RNA chains [i](#)

In the following table, the column labelled ‘#RSRZ> 2’ contains the number (and percentage) of RSRZ outliers, followed by percent RSRZ outliers for the chain as percentile scores relative to all X-ray entries and entries of similar resolution. The OWAB column contains the minimum, median, 95<sup>th</sup> percentile and maximum values of the occupancy-weighted average B-factor per residue. The column labelled ‘Q< 0.9’ lists the number of (and percentage) of residues with an average occupancy less than 0.9.

Mol	Chain	Analysed	<RSRZ>	#RSRZ>2	OWAB(Å <sup>2</sup> )	Q<0.9
1	A	353/359 (98%)	-0.08	2 (0%) 89 91	42, 66, 90, 130	0
1	B	355/359 (98%)	-0.11	3 (0%) 86 87	35, 54, 87, 108	0
All	All	708/718 (98%)	-0.09	5 (0%) 87 89	35, 59, 89, 130	0

All (5) RSRZ outliers are listed below:

Mol	Chain	Res	Type	RSRZ
1	A	182	ILE	3.5
1	B	324	GLU	3.2
1	B	131	LEU	2.8
1	B	345	VAL	2.4
1	A	456	LYS	2.2

### 6.2 Non-standard residues in protein, DNA, RNA chains [i](#)

There are no non-standard protein/DNA/RNA residues in this entry.

### 6.3 Carbohydrates [i](#)

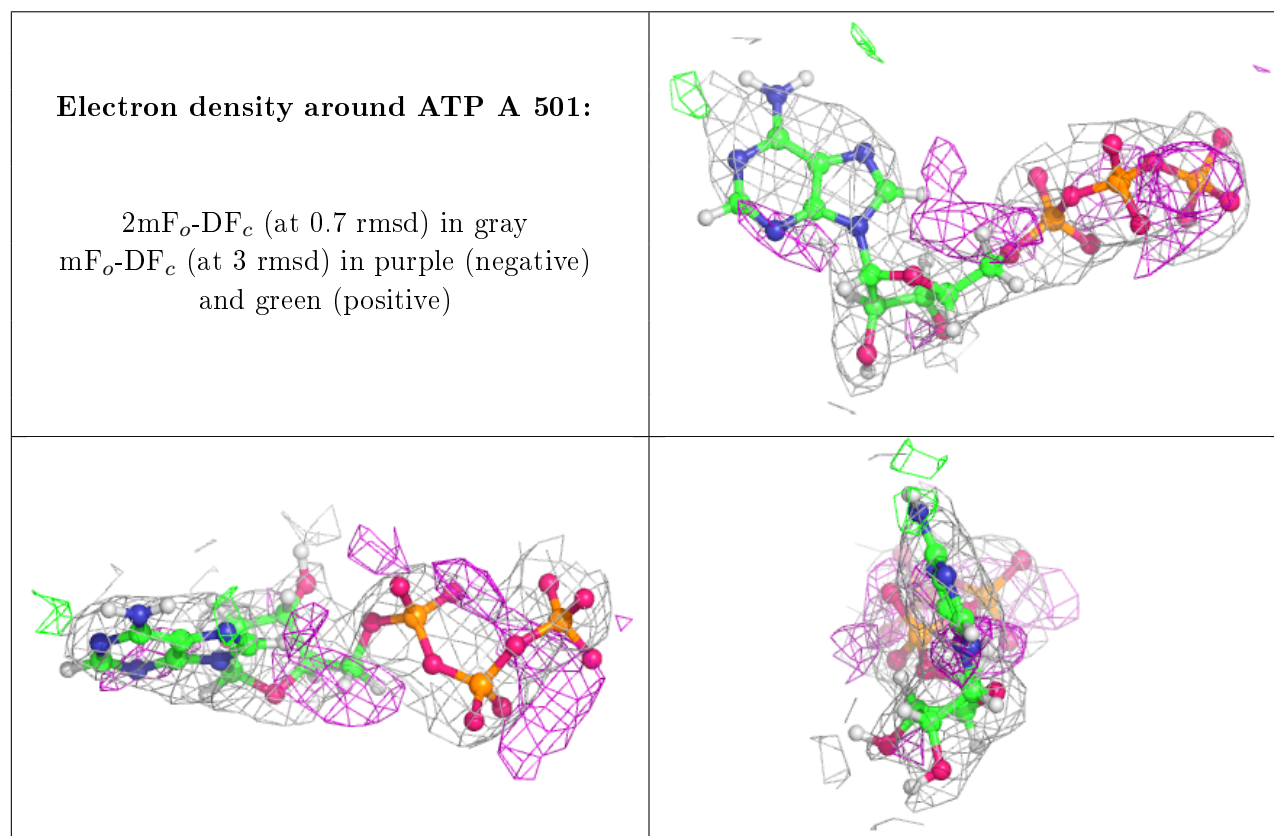
There are no monosaccharides in this entry.

### 6.4 Ligands [i](#)

In the following table, the Atoms column lists the number of modelled atoms in the group and the number defined in the chemical component dictionary. The B-factors column lists the minimum, median, 95<sup>th</sup> percentile and maximum values of B factors of atoms in the group. The column labelled ‘Q< 0.9’ lists the number of atoms with occupancy less than 0.9.

Mol	Type	Chain	Res	Atoms	RSCC	RSR	B-factors( $\text{\AA}^2$ )	Q<0.9
3	BGC	A	502	12/12	0.76	0.31	112,121,123,123	0
2	ATP	A	501	31/31	0.90	0.20	68,79,118,120	0

The following is a graphical depiction of the model fit to experimental electron density of all instances of the Ligand of Interest. In addition, ligands with molecular weight > 250 and outliers as shown on the geometry validation Tables will also be included. Each fit is shown from different orientation to approximate a three-dimensional view.



## 6.5 Other polymers [i](#)

There are no such residues in this entry.