



# wwPDB X-ray Structure Validation Summary Report ⓘ

Oct 11, 2021 – 02:36 PM EDT

PDB ID : 2O3T  
Title : Structural Basis for Formation and Hydrolysis of Calcium Messenger Cyclic ADP-ribose by Human CD38  
Authors : Liu, Q.; Kriksunov, I.A.; Graeff, R.; Lee, H.C.; Hao, Q.  
Deposited on : 2006-12-01  
Resolution : 1.68 Å(reported)

This is a wwPDB X-ray Structure Validation Summary Report for a publicly released PDB entry.

We welcome your comments at [validation@mail.wwpdb.org](mailto:validation@mail.wwpdb.org)

A user guide is available at

<https://www.wwpdb.org/validation/2017/XrayValidationReportHelp>

with specific help available everywhere you see the ⓘ symbol.

---

The following versions of software and data (see [references ⓘ](#)) were used in the production of this report:

MolProbity	:	4.02b-467
Mogul	:	1.8.5 (274361), CSD as541be (2020)
Xtriage (Phenix)	:	1.13
EDS	:	2.23.2
buster-report	:	1.1.7 (2018)
Percentile statistics	:	20191225.v01 (using entries in the PDB archive December 25th 2019)
Refmac	:	5.8.0158
CCP4	:	7.0.044 (Gargrove)
Ideal geometry (proteins)	:	Engh & Huber (2001)
Ideal geometry (DNA, RNA)	:	Parkinson et al. (1996)
Validation Pipeline (wwPDB-VP)	:	2.23.2

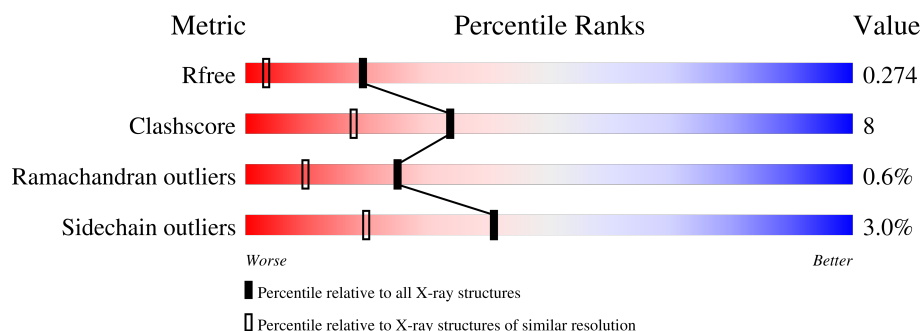
# 1 Overall quality at a glance

The following experimental techniques were used to determine the structure:

*X-RAY DIFFRACTION*

The reported resolution of this entry is 1.68 Å.

Percentile scores (ranging between 0-100) for global validation metrics of the entry are shown in the following graphic. The table shows the number of entries on which the scores are based.



Metric	Whole archive (#Entries)	Similar resolution (#Entries, resolution range(Å))
$R_{free}$	130704	6780 (1.70-1.66)
Clashscore	141614	7310 (1.70-1.66)
Ramachandran outliers	138981	7173 (1.70-1.66)
Sidechain outliers	138945	7172 (1.70-1.66)

The table below summarises the geometric issues observed across the polymeric chains and their fit to the electron density. The red, orange, yellow and green segments of the lower bar indicate the fraction of residues that contain outliers for  $\geq 3$ , 2, 1 and 0 types of geometric quality criteria respectively. A grey segment represents the fraction of residues that are not modelled. The numeric value for each fraction is indicated below the corresponding segment, with a dot representing fractions  $\leq 5\%$ .

Mol	Chain	Length	Quality of chain
1	A	262	
1	B	262	

## 2 Entry composition

There are 3 unique types of molecules in this entry. The entry contains 4614 atoms, of which 0 are hydrogens and 0 are deuteriums.

In the tables below, the ZeroOcc column contains the number of atoms modelled with zero occupancy, the AltConf column contains the number of residues with at least one atom in alternate conformation and the Trace column contains the number of residues modelled with at most 2 atoms.

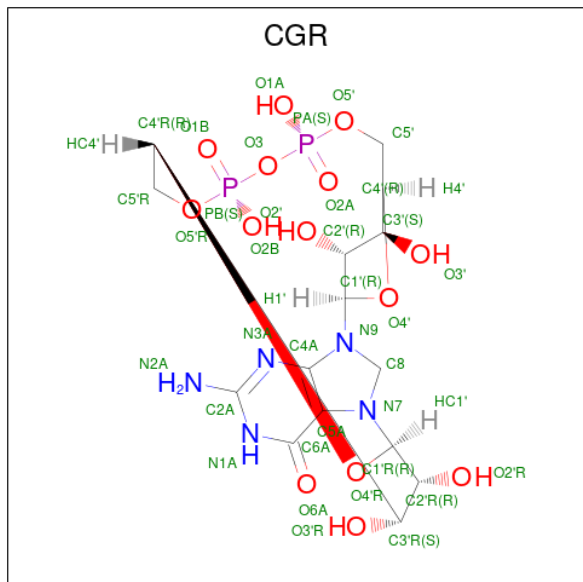
- Molecule 1 is a protein called ADP-ribosyl cyclase 1.

Mol	Chain	Residues	Atoms					ZeroOcc	AltConf	Trace
1	A	252	Total	C	N	O	S	0	0	0
			2050	1290	359	385	16			
1	B	252	Total	C	N	O	S	0	0	0
			2050	1290	359	385	16			

There are 24 discrepancies between the modelled and reference sequences:

Chain	Residue	Modelled	Actual	Comment	Reference
A	39	LYS	-	cloning artifact	UNP P28907
A	40	ARG	-	cloning artifact	UNP P28907
A	41	GLU	-	cloning artifact	UNP P28907
A	42	ALA	-	cloning artifact	UNP P28907
A	43	GLU	-	cloning artifact	UNP P28907
A	44	ALA	-	cloning artifact	UNP P28907
A	49	THR	GLN	engineered mutation	UNP P28907
A	100	ASP	ASN	engineered mutation	UNP P28907
A	164	ASP	ASN	engineered mutation	UNP P28907
A	209	ASP	ASN	engineered mutation	UNP P28907
A	219	ASP	ASN	engineered mutation	UNP P28907
A	226	GLN	GLU	engineered mutation	UNP P28907
B	39	LYS	-	cloning artifact	UNP P28907
B	40	ARG	-	cloning artifact	UNP P28907
B	41	GLU	-	cloning artifact	UNP P28907
B	42	ALA	-	cloning artifact	UNP P28907
B	43	GLU	-	cloning artifact	UNP P28907
B	44	ALA	-	cloning artifact	UNP P28907
B	49	THR	GLN	engineered mutation	UNP P28907
B	100	ASP	ASN	engineered mutation	UNP P28907
B	164	ASP	ASN	engineered mutation	UNP P28907
B	209	ASP	ASN	engineered mutation	UNP P28907
B	219	ASP	ASN	engineered mutation	UNP P28907
B	226	GLN	GLU	engineered mutation	UNP P28907

- Molecule 2 is CYCLIC GUANOSINE DIPHOSPHATE-RIBOSE (three-letter code: CGR) (formula:  $\text{C}_{15}\text{H}_{23}\text{N}_5\text{O}_{14}\text{P}_2$ ).



Mol	Chain	Residues	Atoms				ZeroOcc	AltConf	
2	A	1	Total 36	C 15	N 5	O 14	P 2	0	0

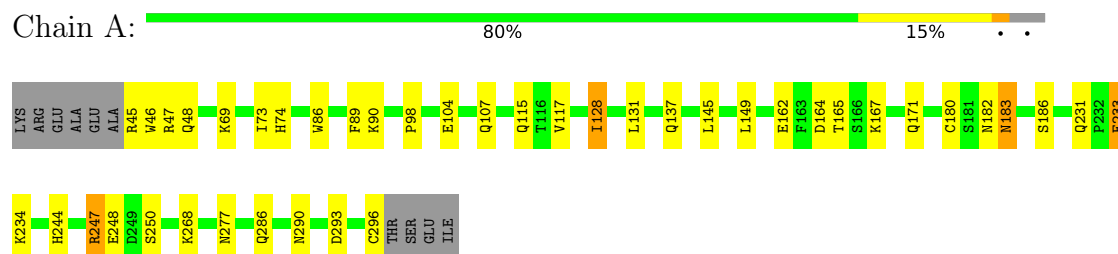
- Molecule 3 is water.

Mol	Chain	Residues	Atoms	ZeroOcc	AltConf
3	A	280	Total O 280 280	0	0
3	B	198	Total O 198 198	0	0

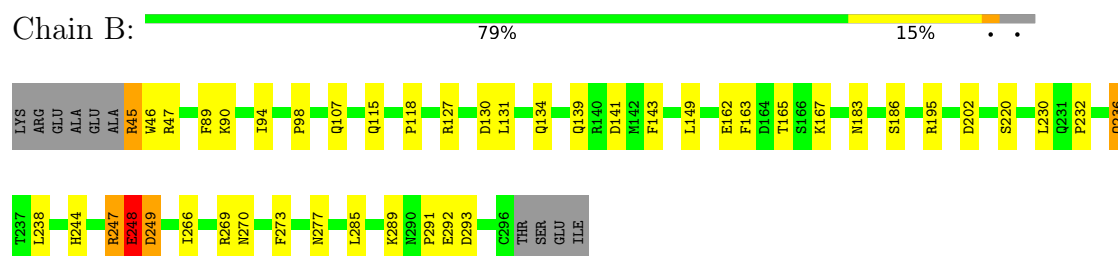
### 3 Residue-property plots

These plots are drawn for all protein, RNA, DNA and oligosaccharide chains in the entry. The first graphic for a chain summarises the proportions of the various outlier classes displayed in the second graphic. The second graphic shows the sequence view annotated by issues in geometry. Residues are color-coded according to the number of geometric quality criteria for which they contain at least one outlier: green = 0, yellow = 1, orange = 2 and red = 3 or more. Stretches of 2 or more consecutive residues without any outlier are shown as a green connector. Residues present in the sample, but not in the model, are shown in grey.

- Molecule 1: ADP-ribosyl cyclase 1



- Molecule 1: ADP-ribosyl cyclase 1



## 4 Data and refinement statistics

Property	Value	Source
Space group	P 1	Depositor
Cell constants a, b, c, $\alpha$ , $\beta$ , $\gamma$	41.99Å 53.29Å 65.73Å 105.90° 91.76° 95.16°	Depositor
Resolution (Å)	20.00 – 1.68 19.49 – 1.68	Depositor EDS
% Data completeness (in resolution range)	100.0 (20.00-1.68) 96.2 (19.49-1.68)	Depositor EDS
$R_{merge}$	(Not available)	Depositor
$R_{sym}$	(Not available)	Depositor
$\langle I/\sigma(I) \rangle$ <sup>1</sup>	2.18 (at 1.68Å)	Xtriage
Refinement program	REFMAC 5.2.0019	Depositor
R, $R_{free}$	0.172 , 0.208 0.248 , 0.274	Depositor DCC
$R_{free}$ test set	3002 reflections (5.05%)	wwPDB-VP
Wilson B-factor (Å <sup>2</sup> )	17.6	Xtriage
Anisotropy	0.046	Xtriage
Bulk solvent $k_{sol}$ (e/Å <sup>3</sup> ), $B_{sol}$ (Å <sup>2</sup> )	0.39 , 55.1	EDS
L-test for twinning <sup>2</sup>	$\langle  L  \rangle = 0.50$ , $\langle L^2 \rangle = 0.33$	Xtriage
Estimated twinning fraction	No twinning to report.	Xtriage
$F_o, F_c$ correlation	0.93	EDS
Total number of atoms	4614	wwPDB-VP
Average B, all atoms (Å <sup>2</sup> )	32.0	wwPDB-VP

Xtriage's analysis on translational NCS is as follows: *The largest off-origin peak in the Patterson function is 7.40% of the height of the origin peak. No significant pseudotranslation is detected.*

<sup>1</sup>Intensities estimated from amplitudes.

<sup>2</sup>Theoretical values of  $\langle |L| \rangle$ ,  $\langle L^2 \rangle$  for acentric reflections are 0.5, 0.333 respectively for untwinned datasets, and 0.375, 0.2 for perfectly twinned datasets.

## 5 Model quality [i](#)

### 5.1 Standard geometry [i](#)

Bond lengths and bond angles in the following residue types are not validated in this section: CGR

The Z score for a bond length (or angle) is the number of standard deviations the observed value is removed from the expected value. A bond length (or angle) with  $|Z| > 5$  is considered an outlier worth inspection. RMSZ is the root-mean-square of all Z scores of the bond lengths (or angles).

Mol	Chain	Bond lengths		Bond angles	
		RMSZ	$\# Z  > 5$	RMSZ	$\# Z  > 5$
1	A	0.63	0/2101	0.67	0/2846
1	B	0.56	0/2101	0.76	7/2846 (0.2%)
All	All	0.59	0/4202	0.71	7/5692 (0.1%)

Chiral center outliers are detected by calculating the chiral volume of a chiral center and verifying if the center is modelled as a planar moiety or with the opposite hand. A planarity outlier is detected by checking planarity of atoms in a peptide group, atoms in a mainchain group or atoms of a sidechain that are expected to be planar.

Mol	Chain	#Chirality outliers	#Planarity outliers
1	A	0	1

There are no bond length outliers.

The worst 5 of 7 bond angle outliers are listed below:

Mol	Chain	Res	Type	Atoms	Z	Observed(°)	Ideal(°)
1	B	292	GLU	N-CA-C	10.64	139.72	111.00
1	B	292	GLU	CB-CA-C	-10.25	89.90	110.40
1	B	248	GLU	N-CA-C	8.19	133.11	111.00
1	B	248	GLU	CB-CA-C	-8.16	94.09	110.40
1	B	247	ARG	C-N-CA	7.58	140.65	121.70

There are no chirality outliers.

All (1) planarity outliers are listed below:

Mol	Chain	Res	Type	Group
1	A	164	ASP	Peptide

## 5.2 Too-close contacts [i](#)

In the following table, the Non-H and H(model) columns list the number of non-hydrogen atoms and hydrogen atoms in the chain respectively. The H(added) column lists the number of hydrogen atoms added and optimized by MolProbity. The Clashes column lists the number of clashes within the asymmetric unit, whereas Symm-Clashes lists symmetry-related clashes.

Mol	Chain	Non-H	H(model)	H(added)	Clashes	Symm-Clashes
1	A	2050	0	1978	34	0
1	B	2050	0	1978	33	0
2	A	36	0	21	3	0
3	A	280	0	0	6	0
3	B	198	0	0	1	0
All	All	4614	0	3977	69	0

The all-atom clashscore is defined as the number of clashes found per 1000 atoms (including hydrogen atoms). The all-atom clashscore for this structure is 8.

The worst 5 of 69 close contacts within the same asymmetric unit are listed below, sorted by their clash magnitude.

Atom-1	Atom-2	Interatomic distance (Å)	Clash overlap (Å)
1:A:231:GLN:HG3	3:A:558:HOH:O	1.61	1.00
1:A:69:LYS:HE2	1:A:73:ILE:HD11	1.46	0.96
1:A:69:LYS:CE	1:A:73:ILE:HD11	1.99	0.93
1:B:115:GLN:HE22	1:B:149:LEU:H	1.23	0.87
1:A:115:GLN:HE22	1:A:149:LEU:H	1.24	0.85

There are no symmetry-related clashes.

## 5.3 Torsion angles [i](#)

### 5.3.1 Protein backbone [i](#)

In the following table, the Percentiles column shows the percent Ramachandran outliers of the chain as a percentile score with respect to all X-ray entries followed by that with respect to entries of similar resolution.

The Analysed column shows the number of residues for which the backbone conformation was analysed, and the total number of residues.

Mol	Chain	Analysed	Favoured	Allowed	Outliers	Percentiles
1	A	250/262 (95%)	244 (98%)	4 (2%)	2 (1%)	19 6

*Continued on next page...*



*Continued from previous page...*

Mol	Chain	Analysed	Favoured	Allowed	Outliers	Percentiles	
1	B	250/262 (95%)	239 (96%)	10 (4%)	1 (0%)	34	17
All	All	500/524 (95%)	483 (97%)	14 (3%)	3 (1%)	25	10

All (3) Ramachandran outliers are listed below:

Mol	Chain	Res	Type
1	B	249	ASP
1	A	247	ARG
1	A	128	ILE

### 5.3.2 Protein sidechains [i](#)

In the following table, the Percentiles column shows the percent sidechain outliers of the chain as a percentile score with respect to all X-ray entries followed by that with respect to entries of similar resolution.

The Analysed column shows the number of residues for which the sidechain conformation was analysed, and the total number of residues.

Mol	Chain	Analysed	Rotameric	Outliers	Percentiles	
1	A	233/241 (97%)	226 (97%)	7 (3%)	41	20
1	B	233/241 (97%)	226 (97%)	7 (3%)	41	20
All	All	466/482 (97%)	452 (97%)	14 (3%)	41	20

5 of 14 residues with a non-rotameric sidechain are listed below:

Mol	Chain	Res	Type
1	B	45	ARG
1	B	89	PHE
1	B	293	ASP
1	B	248	GLU
1	B	270	ASN

Sometimes sidechains can be flipped to improve hydrogen bonding and reduce clashes. 5 of 16 such sidechains are listed below:

Mol	Chain	Res	Type
1	B	255	GLN
1	B	244	HIS
1	A	290	ASN

*Continued on next page...*

*Continued from previous page...*

Mol	Chain	Res	Type
1	B	229	ASN
1	A	286	GLN

### 5.3.3 RNA ⓘ

There are no RNA molecules in this entry.

## 5.4 Non-standard residues in protein, DNA, RNA chains ⓘ

There are no non-standard protein/DNA/RNA residues in this entry.

## 5.5 Carbohydrates ⓘ

There are no monosaccharides in this entry.

## 5.6 Ligand geometry ⓘ

1 ligand is modelled in this entry.

In the following table, the Counts columns list the number of bonds (or angles) for which Mogul statistics could be retrieved, the number of bonds (or angles) that are observed in the model and the number of bonds (or angles) that are defined in the Chemical Component Dictionary. The Link column lists molecule types, if any, to which the group is linked. The Z score for a bond length (or angle) is the number of standard deviations the observed value is removed from the expected value. A bond length (or angle) with  $|Z| > 2$  is considered an outlier worth inspection. RMSZ is the root-mean-square of all Z scores of the bond lengths (or angles).

Mol	Type	Chain	Res	Link	Bond lengths			Bond angles		
					Counts	RMSZ	$\# Z  > 2$	Counts	RMSZ	$\# Z  > 2$
2	CGR	A	301	-	38,40,40	1.35	5 (13%)	49,64,64	1.63	11 (22%)

In the following table, the Chirals column lists the number of chiral outliers, the number of chiral centers analysed, the number of these observed in the model and the number defined in the Chemical Component Dictionary. Similar counts are reported in the Torsion and Rings columns. '-' means no outliers of that kind were identified.

Mol	Type	Chain	Res	Link	Chirals	Torsions	Rings
2	CGR	A	301	-	-	5/26/70/70	0/4/5/5

All (5) bond length outliers are listed below:

Mol	Chain	Res	Type	Atoms	Z	Observed(Å)	Ideal(Å)
2	A	301	CGR	C8-N9	-4.34	1.35	1.45
2	A	301	CGR	C8-N7	-4.11	1.36	1.45
2	A	301	CGR	C6A-N1A	2.63	1.37	1.33
2	A	301	CGR	C4A-N9	-2.63	1.33	1.38
2	A	301	CGR	C1'R-N7	2.17	1.50	1.46

The worst 5 of 11 bond angle outliers are listed below:

Mol	Chain	Res	Type	Atoms	Z	Observed(°)	Ideal(°)
2	A	301	CGR	N9-C8-N7	5.17	110.37	103.03
2	A	301	CGR	C6A-C5A-C4A	3.60	119.06	115.20
2	A	301	CGR	N3A-C4A-N9	3.35	131.21	126.91
2	A	301	CGR	C5A-C4A-N3A	-2.98	121.63	126.49
2	A	301	CGR	C3'R-C2'R-C1'R	2.86	106.87	101.43

There are no chirality outliers.

All (5) torsion outliers are listed below:

Mol	Chain	Res	Type	Atoms
2	A	301	CGR	PB-O3-PA-O5'
2	A	301	CGR	C2'R-C1'R-N7-C5A
2	A	301	CGR	C2'-C1'-N9-C8
2	A	301	CGR	C2'-C1'-N9-C4A
2	A	301	CGR	C4'R-C5'R-O5'R-PB

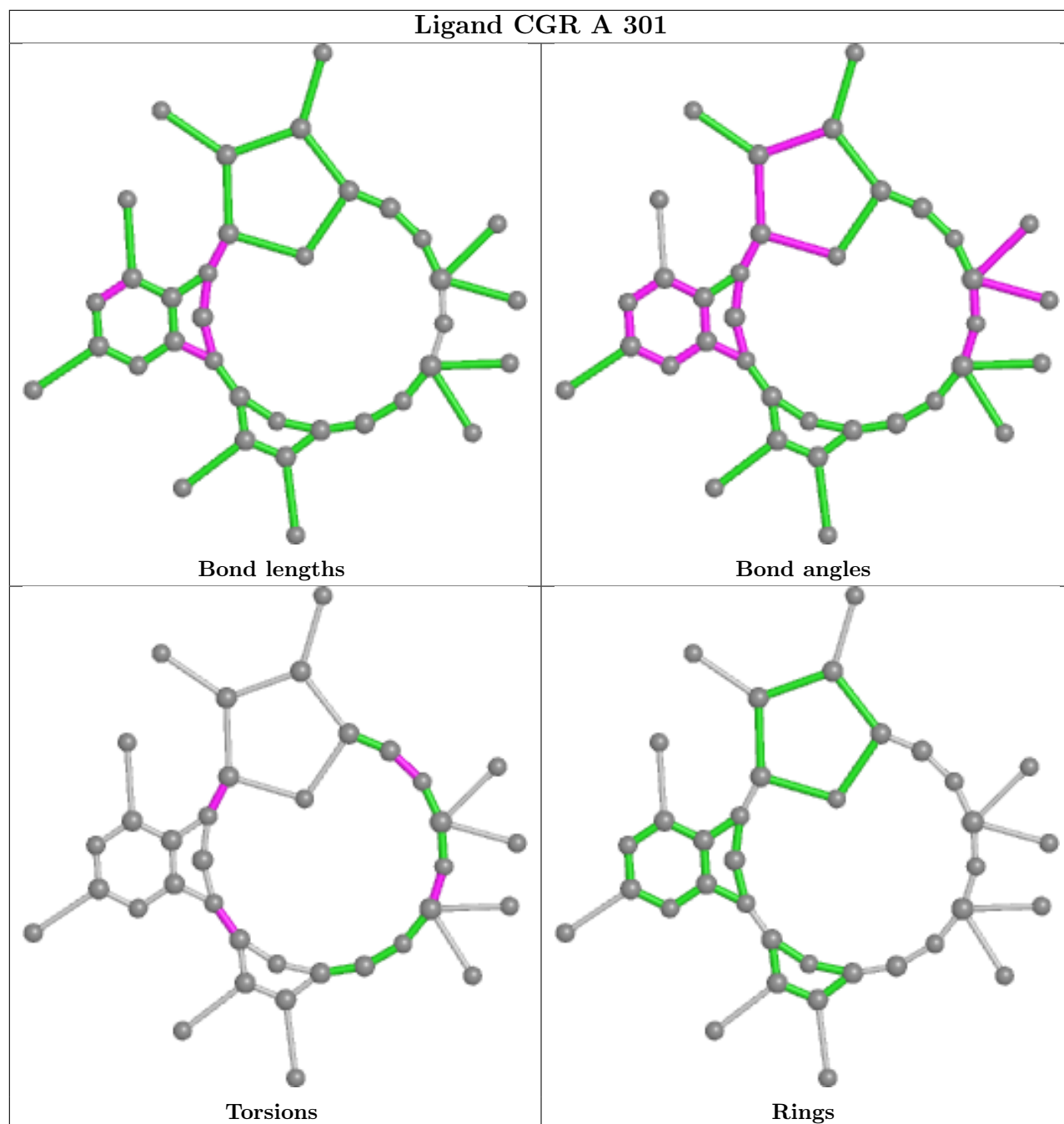
There are no ring outliers.

1 monomer is involved in 3 short contacts:

Mol	Chain	Res	Type	Clashes	Symm-Clashes
2	A	301	CGR	3	0

The following is a two-dimensional graphical depiction of Mogul quality analysis of bond lengths, bond angles, torsion angles, and ring geometry for all instances of the Ligand of Interest. In addition, ligands with molecular weight > 250 and outliers as shown on the validation Tables will also be included. For torsion angles, if less than 5% of the Mogul distribution of torsion angles is within 10 degrees of the torsion angle in question, then that torsion angle is considered an outlier. Any bond that is central to one or more torsion angles identified as an outlier by Mogul will be highlighted in the graph. For rings, the root-mean-square deviation (RMSD) between the ring in question and similar rings identified by Mogul is calculated over all ring torsion angles. If the average RMSD is greater than 60 degrees and the minimal RMSD between the ring in question and any Mogul-identified rings is also greater than 60 degrees, then that ring is considered an outlier. The outliers are highlighted in purple. The color gray indicates Mogul did not find sufficient

equivalents in the CSD to analyse the geometry.



## 5.7 Other polymers [i](#)

There are no such residues in this entry.

## 5.8 Polymer linkage issues [i](#)

There are no chain breaks in this entry.

## 6 Fit of model and data ⓘ

### 6.1 Protein, DNA and RNA chains ⓘ

Unable to reproduce the depositors R factor - this section is therefore empty.

### 6.2 Non-standard residues in protein, DNA, RNA chains ⓘ

Unable to reproduce the depositors R factor - this section is therefore empty.

### 6.3 Carbohydrates ⓘ

Unable to reproduce the depositors R factor - this section is therefore empty.

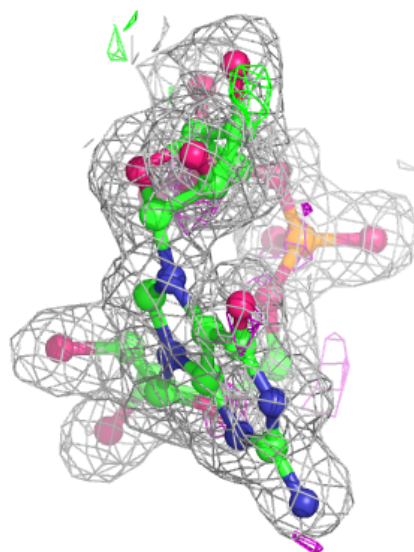
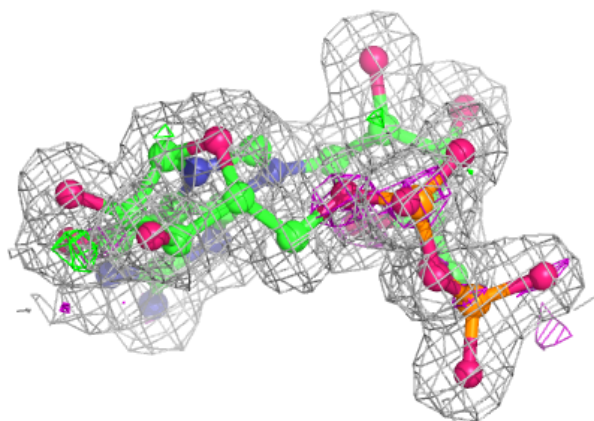
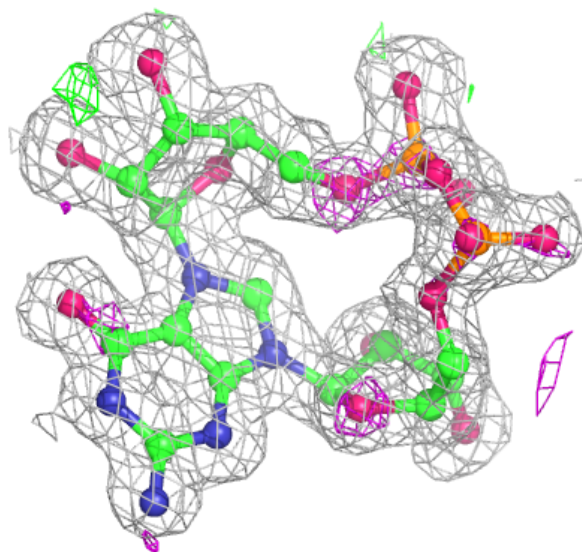
### 6.4 Ligands ⓘ

Unable to reproduce the depositors R factor - this section is therefore empty.

The following is a graphical depiction of the model fit to experimental electron density of all instances of the Ligand of Interest. In addition, ligands with molecular weight > 250 and outliers as shown on the geometry validation Tables will also be included. Each fit is shown from different orientation to approximate a three-dimensional view.

**Electron density around CGR A 301:**

$2mF_o-DF_c$  (at 0.7 rmsd) in gray  
 $mF_o-DF_c$  (at 3 rmsd) in purple (negative)  
and green (positive)



## 6.5 Other polymers [i](#)

Unable to reproduce the depositors R factor - this section is therefore empty.