



Full wwPDB X-ray Structure Validation Report ⓘ

May 16, 2020 – 02:32 am BST

PDB ID : 3O32
Title : Crystal Structure of 4-Chlorocatechol Dioxygenase from *Rhodococcus opacus* 1CP in complex with 3,5-dichlorocatechol
Authors : Ferraroni, M.; Briganti, F.; Kolomytseva, M.; Golovleva, L.
Deposited on : 2010-07-23
Resolution : 2.85 Å(reported)

This is a Full wwPDB X-ray Structure Validation Report for a publicly released PDB entry.

We welcome your comments at validation@mail.wwpdb.org

A user guide is available at

<https://www.wwpdb.org/validation/2017/XrayValidationReportHelp>

with specific help available everywhere you see the ⓘ symbol.

The following versions of software and data (see [references ⓘ](#)) were used in the production of this report:

MolProbity : 4.02b-467
Mogul : 1.8.5 (274361), CSD as541be (2020)
Xtriage (Phenix) : 1.13
EDS : 2.11
buster-report : 1.1.7 (2018)
Percentile statistics : 20191225.v01 (using entries in the PDB archive December 25th 2019)
Refmac : 5.8.0158
CCP4 : 7.0.044 (Gargrove)
Ideal geometry (proteins) : Engh & Huber (2001)
Ideal geometry (DNA, RNA) : Parkinson et al. (1996)
Validation Pipeline (wwPDB-VP) : 2.11

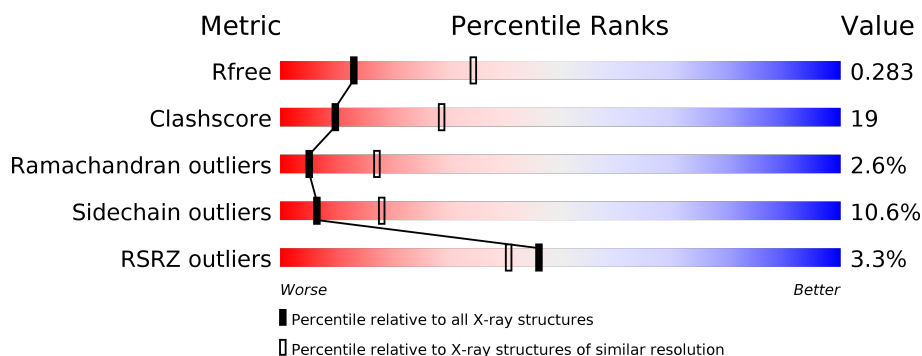
1 Overall quality at a glance

The following experimental techniques were used to determine the structure:

X-RAY DIFFRACTION

The reported resolution of this entry is 2.85 Å.

Percentile scores (ranging between 0-100) for global validation metrics of the entry are shown in the following graphic. The table shows the number of entries on which the scores are based.



Metric	Whole archive (#Entries)	Similar resolution (#Entries, resolution range(Å))
R_{free}	130704	3168 (2.90-2.82)
Clashscore	141614	3438 (2.90-2.82)
Ramachandran outliers	138981	3348 (2.90-2.82)
Sidechain outliers	138945	3351 (2.90-2.82)
RSRZ outliers	127900	3103 (2.90-2.82)

The table below summarises the geometric issues observed across the polymeric chains and their fit to the electron density. The red, orange, yellow and green segments on the lower bar indicate the fraction of residues that contain outliers for ≥ 3 , 2, 1 and 0 types of geometric quality criteria respectively. A grey segment represents the fraction of residues that are not modelled. The numeric value for each fraction is indicated below the corresponding segment, with a dot representing fractions $\leq 5\%$. The upper red bar (where present) indicates the fraction of residues that have poor fit to the electron density. The numeric value is given above the bar.

Mol	Chain	Length	Quality of chain
1	A	257	<div> <div>2%</div> <div> <div></div> <div>65%</div> <div>31%</div> <div>.</div> </div> </div>
1	B	257	<div> <div>4%</div> <div> <div></div> <div>59%</div> <div>34%</div> <div>6%</div> <div>.</div> </div> </div>

The following table lists non-polymeric compounds, carbohydrate monomers and non-standard residues in protein, DNA, RNA chains that are outliers for geometric or electron-density-fit criteria:

Mol	Type	Chain	Res	Chirality	Geometry	Clashes	Electron density
3	35C	A	258	-	-	X	-

2 Entry composition [i](#)

There are 5 unique types of molecules in this entry. The entry contains 4118 atoms, of which 0 are hydrogens and 0 are deuteriums.

In the tables below, the ZeroOcc column contains the number of atoms modelled with zero occupancy, the AltConf column contains the number of residues with at least one atom in alternate conformation and the Trace column contains the number of residues modelled with at most 2 atoms.

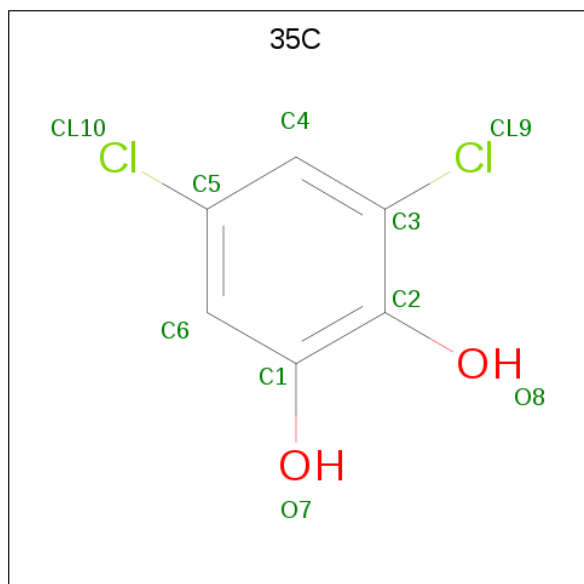
- Molecule 1 is a protein called Chlorocatechol 1,2-dioxygenase.

Mol	Chain	Residues	Atoms					ZeroOcc	AltConf	Trace
1	A	256	Total	C	N	O	S	0	0	0
			2028	1299	336	387	6			
1	B	255	Total	C	N	O	S	0	0	0
			1948	1235	325	382	6			

- Molecule 2 is FE (III) ION (three-letter code: FE) (formula: Fe).

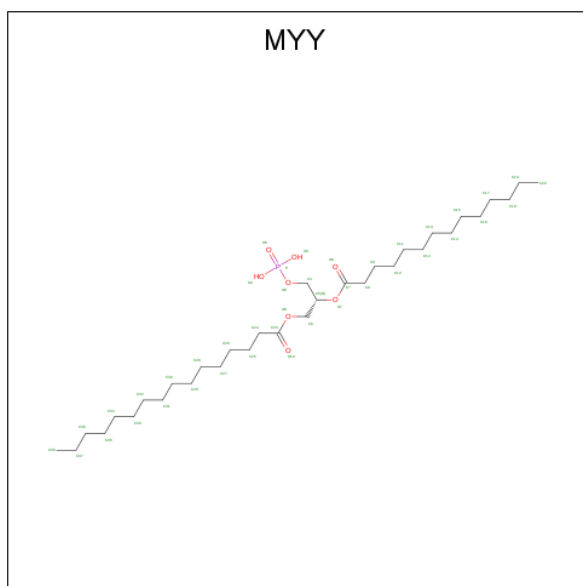
Mol	Chain	Residues	Atoms		ZeroOcc	AltConf
2	B	1	Total	Fe	0	0
			1	1		
2	A	1	Total	Fe	0	0
			1	1		

- Molecule 3 is 3,5-dichlorobenzene-1,2-diol (three-letter code: 35C) (formula: C₆H₄Cl₂O₂).



Mol	Chain	Residues	Atoms				ZeroOcc	AltConf
3	A	1	Total	C	Cl	O	0	0
			10	6	2	2		

- Molecule 4 is (2R)-3-(PHOSPHONOXY)-2-(TETRADECANOYLOXY)PROPYL PALMITATE (three-letter code: MYY) (formula: $C_{33}H_{65}O_8P$).



Mol	Chain	Residues	Atoms				ZeroOcc	AltConf
4	A	1	Total	C	O	P	0	0
			39	33	5	1		
4	B	1	Total	C	O		0	0
			37	33	4			

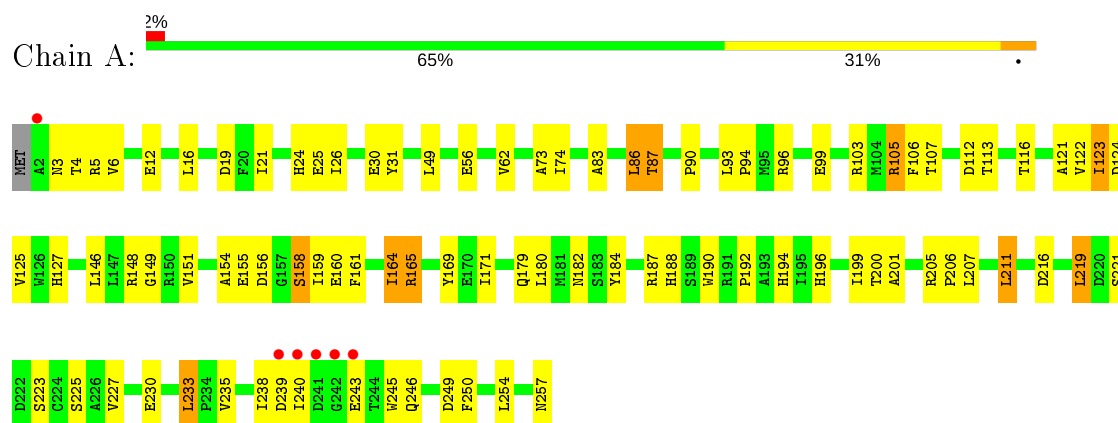
- Molecule 5 is water.

Mol	Chain	Residues	Atoms		ZeroOcc	AltConf
5	A	45	Total	O	0	0
			45	45		
5	B	9	Total	O	0	0
			9	9		

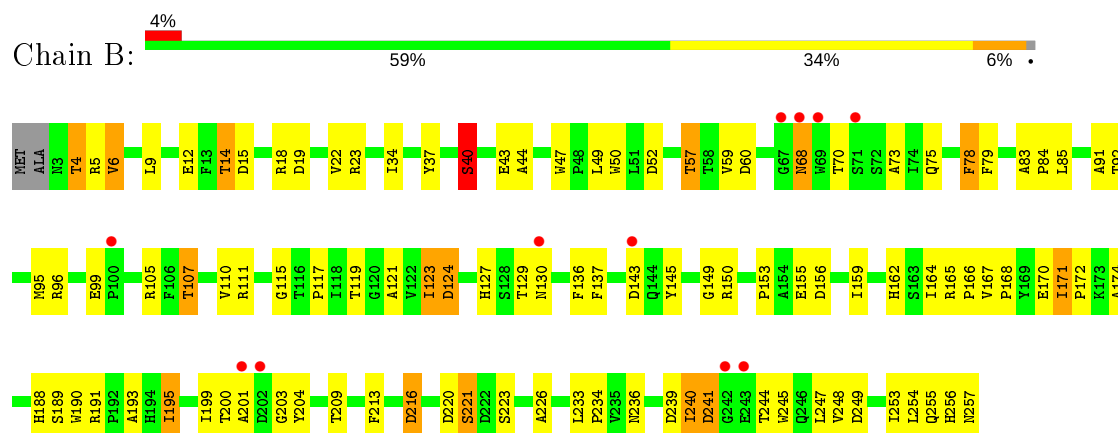
3 Residue-property plots [i](#)

These plots are drawn for all protein, RNA and DNA chains in the entry. The first graphic for a chain summarises the proportions of the various outlier classes displayed in the second graphic. The second graphic shows the sequence view annotated by issues in geometry and electron density. Residues are color-coded according to the number of geometric quality criteria for which they contain at least one outlier: green = 0, yellow = 1, orange = 2 and red = 3 or more. A red dot above a residue indicates a poor fit to the electron density ($RSRZ > 2$). Stretches of 2 or more consecutive residues without any outlier are shown as a green connector. Residues present in the sample, but not in the model, are shown in grey.

• Molecule 1: Chlorocatechol 1,2-dioxygenase



• Molecule 1: Chlorocatechol 1,2-dioxygenase



4 Data and refinement statistics

Property	Value	Source
Space group	P 63 2 2	Depositor
Cell constants a, b, c, α , β , γ	90.53 Å 90.53 Å 309.83 Å 90.00° 90.00° 120.00°	Depositor
Resolution (Å)	15.00 – 2.85 29.50 – 2.74	Depositor EDS
% Data completeness (in resolution range)	100.0 (15.00-2.85) 99.3 (29.50-2.74)	Depositor EDS
R_{merge}	0.05	Depositor
R_{sym}	0.05	Depositor
$\langle I/\sigma(I) \rangle$ ¹	2.60 (at 2.76 Å)	Xtriage
Refinement program	REFMAC	Depositor
R, R_{free}	0.213 , 0.288 0.205 , 0.283	Depositor DCC
R_{free} test set	1027 reflections (4.99%)	wwPDB-VP
Wilson B-factor (Å ²)	73.8	Xtriage
Anisotropy	0.375	Xtriage
Bulk solvent k_{sol} (e/Å ³), B_{sol} (Å ²)	0.30 , 52.2	EDS
L-test for twinning ²	$\langle L \rangle = 0.45$, $\langle L^2 \rangle = 0.28$	Xtriage
Estimated twinning fraction	No twinning to report.	Xtriage
F_o, F_c correlation	0.94	EDS
Total number of atoms	4118	wwPDB-VP
Average B, all atoms (Å ²)	81.0	wwPDB-VP

Xtriage's analysis on translational NCS is as follows: *The largest off-origin peak in the Patterson function is 4.22% of the height of the origin peak. No significant pseudotranslation is detected.*

¹Intensities estimated from amplitudes.

²Theoretical values of $\langle |L| \rangle$, $\langle L^2 \rangle$ for acentric reflections are 0.5, 0.333 respectively for untwinned datasets, and 0.375, 0.2 for perfectly twinned datasets.

5 Model quality

5.1 Standard geometry

Bond lengths and bond angles in the following residue types are not validated in this section: MYY, 35C, FE

The Z score for a bond length (or angle) is the number of standard deviations the observed value is removed from the expected value. A bond length (or angle) with $|Z| > 5$ is considered an outlier worth inspection. RMSZ is the root-mean-square of all Z scores of the bond lengths (or angles).

Mol	Chain	Bond lengths		Bond angles	
		RMSZ	# Z >5	RMSZ	# Z >5
1	A	0.86	0/2089	0.91	0/2851
1	B	0.60	0/2001	0.68	0/2739
All	All	0.74	0/4090	0.80	0/5590

There are no bond length outliers.

There are no bond angle outliers.

There are no chirality outliers.

There are no planarity outliers.

5.2 Too-close contacts

In the following table, the Non-H and H(model) columns list the number of non-hydrogen atoms and hydrogen atoms in the chain respectively. The H(added) column lists the number of hydrogen atoms added and optimized by MolProbity. The Clashes column lists the number of clashes within the asymmetric unit, whereas Symm-Clashes lists symmetry related clashes.

Mol	Chain	Non-H	H(model)	H(added)	Clashes	Symm-Clashes
1	A	2028	0	1929	75	0
1	B	1948	0	1808	74	0
2	A	1	0	0	0	0
2	B	1	0	0	0	0
3	A	10	0	2	4	0
4	A	39	0	63	12	0
4	B	37	0	61	10	0
5	A	45	0	0	6	0
5	B	9	0	0	3	0
All	All	4118	0	3863	152	0

The all-atom clashscore is defined as the number of clashes found per 1000 atoms (including

hydrogen atoms). The all-atom clashscore for this structure is 19.

All (152) close contacts within the same asymmetric unit are listed below, sorted by their clash magnitude.

Atom-1	Atom-2	Interatomic distance (Å)	Clash overlap (Å)
1:B:78:PHE:HA	1:B:137:PHE:CZ	1.78	1.19
4:A:303:MYE:H381	4:B:304:MYE:H203	1.29	1.12
1:B:78:PHE:HA	1:B:137:PHE:HZ	0.91	1.07
1:A:188:HIS:CD2	1:A:190:TRP:H	1.71	1.06
4:A:303:MYE:H381	4:B:304:MYE:C20	1.91	0.99
1:A:165:ARG:HH11	1:A:246:GLN:HE22	0.94	0.91
4:A:303:MYE:C38	4:B:304:MYE:H203	1.99	0.91
1:A:165:ARG:HH11	1:A:246:GLN:NE2	1.69	0.90
1:A:165:ARG:NH1	1:A:246:GLN:HE22	1.69	0.89
1:B:78:PHE:CA	1:B:137:PHE:HZ	1.83	0.87
1:A:188:HIS:HD2	1:A:190:TRP:N	1.73	0.87
1:A:103:ARG:HB3	1:A:245:TRP:CZ3	2.10	0.86
1:B:166:PRO:HG2	1:B:195:ILE:HG22	1.58	0.84
1:B:123:ILE:O	1:B:123:ILE:HG13	1.76	0.83
1:A:25:GLU:HG3	5:A:291:HOH:O	1.83	0.79
1:B:171:ILE:HG22	1:B:172:PRO:HD2	1.65	0.77
1:A:240:ILE:O	1:A:243:GLU:HB2	1.86	0.75
1:A:188:HIS:CD2	1:A:190:TRP:N	2.54	0.71
1:A:86:LEU:HD21	1:A:93:LEU:HD23	1.73	0.71
1:B:4:THR:CG2	5:B:263:HOH:O	2.39	0.69
1:B:4:THR:HG22	5:B:263:HOH:O	1.91	0.69
4:A:303:MYE:H341	4:B:304:MYE:H362	1.74	0.69
1:A:188:HIS:HD2	1:A:190:TRP:H	0.87	0.68
1:A:196:HIS:CE1	3:A:258:35C:O7	2.47	0.67
1:A:188:HIS:HE1	1:A:221:SER:OG	1.76	0.67
1:B:127:HIS:CD2	1:B:166:PRO:HG3	2.28	0.67
1:B:170:GLU:HB3	1:B:190:TRP:CD2	2.29	0.67
1:A:216:ASP:HB3	1:A:219:LEU:HD22	1.78	0.65
1:A:169:TYR:CD2	3:A:258:35C:CL9	2.87	0.64
1:A:49:LEU:HD21	1:A:171:ILE:HG23	1.79	0.63
1:B:83:ALA:HB3	1:B:150:ARG:HG3	1.80	0.62
1:A:103:ARG:HB3	1:A:245:TRP:CE3	2.34	0.62
1:A:3:ASN:HB3	1:A:6:VAL:HG23	1.83	0.61
1:A:123:ILE:HD12	1:A:123:ILE:N	2.16	0.60
1:B:111:ARG:O	1:B:253:ILE:HA	2.00	0.60
4:A:303:MYE:H322	4:B:304:MYE:C38	2.31	0.60
1:B:240:ILE:HG22	1:B:240:ILE:O	2.02	0.60
1:B:37:TYR:O	1:B:40:SER:HB2	2.02	0.60

Continued on next page...

Continued from previous page...

Atom-1	Atom-2	Interatomic distance (Å)	Clash overlap (Å)
1:A:184:TYR:CE2	4:A:303:MYY:O10	2.56	0.59
1:A:73:ALA:HB1	5:A:263:HOH:O	2.02	0.59
1:A:230:GLU:N	1:A:230:GLU:OE1	2.33	0.58
1:B:171:ILE:HD11	1:B:223:SER:OG	2.03	0.57
1:A:169:TYR:CE2	3:A:258:35C:CL9	2.94	0.57
1:B:203:GLY:HA2	1:B:257:ASN:HD22	1.69	0.57
1:B:188:HIS:CE1	1:B:221:SER:HB2	2.40	0.56
1:A:123:ILE:HG13	1:A:199:ILE:HG12	1.85	0.56
1:B:239:ASP:C	1:B:241:ASP:H	2.07	0.56
1:A:106:PHE:HE1	1:A:159:ILE:HD12	1.71	0.56
4:A:303:MYY:H322	4:B:304:MYY:H383	1.86	0.56
1:A:103:ARG:HD3	5:A:292:HOH:O	2.04	0.56
1:B:34:ILE:HD13	4:B:304:MYY:H191	1.88	0.56
1:A:12:GLU:OE1	1:B:23:ARG:NH2	2.30	0.56
1:A:188:HIS:CD2	1:A:190:TRP:HB2	2.41	0.55
1:B:73:ALA:HB3	1:B:209:THR:HA	1.89	0.55
1:B:105:ARG:HB3	1:B:247:LEU:HD23	1.89	0.54
1:A:56:GLU:CG	1:A:74:ILE:HB	2.38	0.54
1:B:136:PHE:HA	1:B:143:ASP:HA	1.90	0.54
1:B:168:PRO:HD3	1:B:193:ALA:HB2	1.89	0.54
1:A:56:GLU:HG2	1:A:74:ILE:HB	1.91	0.53
1:A:112:ASP:OD2	1:A:116:THR:HB	2.09	0.53
1:A:151:VAL:HG21	1:A:161:PHE:HB3	1.91	0.53
1:B:75:GLN:HE22	1:B:79:PHE:CB	2.22	0.53
1:A:180:LEU:HA	1:A:184:TYR:HD2	1.74	0.52
1:A:105:ARG:NH2	1:A:160:GLU:OE2	2.43	0.52
1:B:153:PRO:HA	1:B:159:ILE:HG22	1.92	0.52
1:B:68:ASN:H	1:B:68:ASN:ND2	2.07	0.52
1:A:30:GLU:HG2	4:A:303:MYY:H9C1	1.91	0.52
1:B:191:ARG:NH2	1:B:226:ALA:HB3	2.25	0.52
1:B:213:PHE:O	1:B:216:ASP:HB2	2.10	0.52
1:B:188:HIS:HD2	1:B:190:TRP:H	1.55	0.52
1:A:86:LEU:CD2	1:A:93:LEU:HD23	2.38	0.51
1:A:86:LEU:HD11	1:A:94:PRO:HD3	1.93	0.51
1:A:107:THR:O	1:A:249:ASP:HA	2.11	0.51
1:A:188:HIS:CE1	1:A:221:SER:OG	2.62	0.51
1:A:6:VAL:HG13	4:B:304:MYY:H121	1.92	0.50
1:A:19:ASP:HB3	5:A:302:HOH:O	2.12	0.50
1:B:5:ARG:HA	5:B:259:HOH:O	2.11	0.50
1:A:156:ASP:OD2	1:A:158:SER:OG	2.28	0.49
1:B:68:ASN:H	1:B:68:ASN:HD22	1.60	0.49

Continued on next page...

Continued from previous page...

Atom-1	Atom-2	Interatomic distance (Å)	Clash overlap (Å)
1:A:184:TYR:CD2	4:A:303:MYY:O10	2.65	0.49
1:A:205:ARG:HH21	1:A:257:ASN:ND2	2.09	0.49
1:B:188:HIS:HE1	1:B:221:SER:HB2	1.76	0.49
1:A:96:ARG:HD3	1:A:99:GLU:OE1	2.12	0.49
1:B:171:ILE:CG2	1:B:172:PRO:HD2	2.40	0.49
1:B:201:ALA:HB3	1:B:204:TYR:HB2	1.95	0.49
1:A:235:VAL:HG11	1:A:246:GLN:HE21	1.78	0.48
1:B:83:ALA:O	1:B:150:ARG:HD2	2.13	0.48
4:A:303:MYY:H381	4:B:304:MYY:H202	1.86	0.48
1:B:96:ARG:O	1:B:99:GLU:HG2	2.13	0.48
1:A:182:ASN:HA	1:A:187:ARG:O	2.14	0.48
1:B:37:TYR:HH	1:B:50:TRP:HE1	1.61	0.48
1:B:117:PRO:CG	1:B:156:ASP:O	2.62	0.47
1:B:124:ASP:N	1:B:124:ASP:OD1	2.47	0.47
1:B:130:ASN:HA	1:B:167:VAL:HG22	1.97	0.47
1:A:86:LEU:HD21	1:A:93:LEU:CD2	2.44	0.47
1:A:239:ASP:HA	1:A:243:GLU:O	2.15	0.47
1:A:106:PHE:HE1	1:A:159:ILE:CD1	2.28	0.46
1:A:250:PHE:CD1	1:A:250:PHE:C	2.88	0.46
4:A:303:MYY:H111	1:B:9:LEU:HD12	1.98	0.46
1:A:83:ALA:HB1	1:A:149:GLY:HA2	1.97	0.46
1:B:57:THR:OG1	1:B:226:ALA:HA	2.16	0.46
1:A:106:PHE:C	1:A:106:PHE:CD1	2.90	0.45
1:B:107:THR:O	1:B:249:ASP:HA	2.17	0.45
1:B:170:GLU:HB3	1:B:190:TRP:CE3	2.51	0.45
1:B:40:SER:O	1:B:43:GLU:N	2.50	0.45
1:B:49:LEU:HD21	1:B:171:ILE:HG21	1.99	0.45
1:A:123:ILE:N	1:A:123:ILE:CD1	2.79	0.45
1:A:121:ALA:HA	1:A:201:ALA:HB2	1.98	0.45
1:A:127:HIS:HE1	1:A:164:ILE:HD13	1.82	0.44
1:A:154:ALA:O	1:A:156:ASP:N	2.50	0.44
1:B:199:ILE:HG21	1:B:254:LEU:HD11	1.99	0.44
1:A:122:VAL:HG13	1:A:122:VAL:O	2.18	0.44
1:B:233:LEU:HD23	1:B:248:VAL:HB	1.98	0.44
1:A:87:THR:HB	5:A:280:HOH:O	2.17	0.44
1:A:156:ASP:OD2	1:A:156:ASP:C	2.55	0.44
1:A:24:HIS:NE2	1:B:12:GLU:HG2	2.32	0.44
1:A:184:TYR:HB3	1:B:6:VAL:HG21	2.00	0.43
1:B:14:THR:HG23	1:B:18:ARG:NH1	2.33	0.43
1:A:62:VAL:HG11	1:B:22:VAL:HA	2.00	0.43
1:A:196:HIS:HE1	3:A:258:35C:O7	1.93	0.43

Continued on next page...

Continued from previous page...

Atom-1	Atom-2	Interatomic distance (Å)	Clash overlap (Å)
1:A:106:PHE:CE1	1:A:159:ILE:HD12	2.54	0.43
1:B:172:PRO:C	1:B:174:ALA:H	2.22	0.43
1:B:105:ARG:HH11	1:B:247:LEU:HD22	1.83	0.42
1:B:95:MET:HB2	1:B:99:GLU:HG3	2.01	0.42
1:B:121:ALA:HB3	1:B:153:PRO:HG3	2.01	0.42
1:A:200:THR:HG22	1:A:206:PRO:HB3	2.00	0.42
1:B:14:THR:O	1:B:18:ARG:HG3	2.19	0.42
1:B:96:ARG:HH21	1:B:129:THR:HG21	1.85	0.42
1:B:111:ARG:HD3	1:B:115:GLY:O	2.20	0.42
1:B:14:THR:HG22	1:B:15:ASP:N	2.33	0.42
1:A:179:GLN:O	1:A:180:LEU:C	2.57	0.42
1:A:21:ILE:HA	1:A:26:ILE:HD12	2.01	0.42
1:B:162:HIS:CE1	1:B:245:TRP:CH2	3.08	0.42
1:B:14:THR:HG23	1:B:18:ARG:CZ	2.50	0.42
4:A:303:MYH:H322	4:B:304:MYH:H382	2.02	0.41
1:A:192:PRO:HB3	1:A:216:ASP:OD2	2.19	0.41
1:B:119:THR:HG22	1:B:155:GLU:HA	2.02	0.41
1:B:162:HIS:CE1	1:B:245:TRP:HH2	2.39	0.41
1:B:110:VAL:O	1:B:110:VAL:HG12	2.21	0.41
1:B:233:LEU:HA	1:B:234:PRO:HD3	1.85	0.41
1:A:31:TYR:CD2	1:B:59:VAL:HG21	2.56	0.41
1:B:84:PRO:HD2	1:B:149:GLY:HA2	2.02	0.41
1:B:19:ASP:OD2	1:B:23:ARG:HD3	2.20	0.41
1:A:148:ARG:HD3	5:A:260:HOH:O	2.19	0.41
1:A:169:TYR:O	1:A:190:TRP:HA	2.21	0.41
1:B:111:ARG:HD3	1:B:117:PRO:HD3	2.02	0.41
1:B:170:GLU:HA	1:B:190:TRP:HA	2.03	0.40
1:B:171:ILE:HG13	1:B:189:SER:O	2.20	0.40
1:A:211:LEU:HG	1:A:233:LEU:HD21	2.04	0.40
1:B:47:TRP:HA	1:B:47:TRP:CE3	2.56	0.40
1:A:194:HIS:HA	1:A:211:LEU:O	2.22	0.40
1:A:192:PRO:CB	1:A:216:ASP:OD2	2.70	0.40

There are no symmetry-related clashes.

5.3 Torsion angles

5.3.1 Protein backbone

In the following table, the Percentiles column shows the percent Ramachandran outliers of the chain as a percentile score with respect to all X-ray entries followed by that with respect to entries

of similar resolution.

The Analysed column shows the number of residues for which the backbone conformation was analysed, and the total number of residues.

Mol	Chain	Analysed	Favoured	Allowed	Outliers	Percentiles	
1	A	254/257 (99%)	235 (92%)	17 (7%)	2 (1%)	19	46
1	B	253/257 (98%)	210 (83%)	32 (13%)	11 (4%)	2	8
All	All	507/514 (99%)	445 (88%)	49 (10%)	13 (3%)	5	17

All (13) Ramachandran outliers are listed below:

Mol	Chain	Res	Type
1	A	90	PRO
1	B	70	THR
1	B	78	PHE
1	B	241	ASP
1	B	255	GLN
1	B	256	HIS
1	B	221	SER
1	A	155	GLU
1	B	40	SER
1	B	240	ILE
1	B	44	ALA
1	B	91	ALA
1	B	145	TYR

5.3.2 Protein sidechains ⓘ

In the following table, the Percentiles column shows the percent sidechain outliers of the chain as a percentile score with respect to all X-ray entries followed by that with respect to entries of similar resolution.

The Analysed column shows the number of residues for which the sidechain conformation was analysed, and the total number of residues.

Mol	Chain	Analysed	Rotameric	Outliers	Percentiles	
1	A	219/223 (98%)	196 (90%)	23 (10%)	7	18
1	B	206/223 (92%)	184 (89%)	22 (11%)	6	18
All	All	425/446 (95%)	380 (89%)	45 (11%)	6	18

All (45) residues with a non-rotameric sidechain are listed below:

Mol	Chain	Res	Type
1	A	4	THR
1	A	5	ARG
1	A	16	LEU
1	A	86	LEU
1	A	87	THR
1	A	105	ARG
1	A	113	THR
1	A	123	ILE
1	A	124	ASP
1	A	125	VAL
1	A	146	LEU
1	A	158	SER
1	A	164	ILE
1	A	165	ARG
1	A	207	LEU
1	A	211	LEU
1	A	219	LEU
1	A	223	SER
1	A	225	SER
1	A	227	VAL
1	A	233	LEU
1	A	238	ILE
1	A	254	LEU
1	B	4	THR
1	B	6	VAL
1	B	14	THR
1	B	40	SER
1	B	52	ASP
1	B	57	THR
1	B	60	ASP
1	B	68	ASN
1	B	85	LEU
1	B	92	THR
1	B	107	THR
1	B	123	ILE
1	B	124	ASP
1	B	164	ILE
1	B	165	ARG
1	B	171	ILE
1	B	195	ILE
1	B	200	THR
1	B	216	ASP
1	B	220	ASP

Continued on next page...

Continued from previous page...

Mol	Chain	Res	Type
1	B	236	ASN
1	B	244	THR

Some sidechains can be flipped to improve hydrogen bonding and reduce clashes. All (11) such sidechains are listed below:

Mol	Chain	Res	Type
1	A	68	ASN
1	A	188	HIS
1	A	246	GLN
1	A	255	GLN
1	A	257	ASN
1	B	68	ASN
1	B	127	HIS
1	B	133	ASN
1	B	182	ASN
1	B	236	ASN
1	B	257	ASN

5.3.3 RNA [i](#)

There are no RNA molecules in this entry.

5.4 Non-standard residues in protein, DNA, RNA chains [i](#)

There are no non-standard protein/DNA/RNA residues in this entry.

5.5 Carbohydrates [i](#)

There are no carbohydrates in this entry.

5.6 Ligand geometry [i](#)

Of 5 ligands modelled in this entry, 2 are monoatomic - leaving 3 for Mogul analysis.

In the following table, the Counts columns list the number of bonds (or angles) for which Mogul statistics could be retrieved, the number of bonds (or angles) that are observed in the model and the number of bonds (or angles) that are defined in the Chemical Component Dictionary. The Link column lists molecule types, if any, to which the group is linked. The Z score for a bond length (or angle) is the number of standard deviations the observed value is removed from the

expected value. A bond length (or angle) with $|Z| > 2$ is considered an outlier worth inspection. RMSZ is the root-mean-square of all Z scores of the bond lengths (or angles).

Mol	Type	Chain	Res	Link	Bond lengths			Bond angles		
					Counts	RMSZ	$\# Z > 2$	Counts	RMSZ	$\# Z > 2$
4	MY Y	A	303	-	37,38,41	1.30	2 (5%)	39,40,46	1.20	2 (5%)
3	35C	A	258	2	10,10,10	2.13	3 (30%)	13,14,14	1.14	1 (7%)
4	MY Y	B	304	-	36,36,41	1.26	2 (5%)	38,38,46	1.28	3 (7%)

In the following table, the Chirals column lists the number of chiral outliers, the number of chiral centers analysed, the number of these observed in the model and the number defined in the Chemical Component Dictionary. Similar counts are reported in the Torsion and Rings columns. '-' means no outliers of that kind were identified.

Mol	Type	Chain	Res	Link	Chirals	Torsions	Rings
4	MY Y	A	303	-	-	22/39/40/43	-
3	35C	A	258	2	-	-	0/1/1/1
4	MY Y	B	304	-	-	19/37/37/43	-

All (7) bond length outliers are listed below:

Mol	Chain	Res	Type	Atoms	Z	Observed(Å)	Ideal(Å)
3	A	258	35C	C1-C2	5.48	1.46	1.40
4	A	303	MY Y	O8-C23	5.25	1.48	1.33
4	A	303	MY Y	O7-C7	5.11	1.48	1.34
4	B	304	MY Y	O7-C7	4.99	1.48	1.34
4	B	304	MY Y	O8-C23	4.90	1.47	1.33
3	A	258	35C	C3-CL9	2.92	1.80	1.73
3	A	258	35C	C5-CL10	2.16	1.79	1.74

All (6) bond angle outliers are listed below:

Mol	Chain	Res	Type	Atoms	Z	Observed(°)	Ideal(°)
4	A	303	MY Y	O7-C7-C8	4.49	121.18	111.50
4	B	304	MY Y	O7-C7-C8	4.06	120.25	111.50
4	A	303	MY Y	O8-C23-C24	3.16	121.84	111.91
4	B	304	MY Y	C5-O7-C7	-3.01	114.00	117.88
4	B	304	MY Y	O8-C23-C24	2.27	119.02	111.91
3	A	258	35C	C2-C3-CL9	2.18	121.52	118.78

There are no chirality outliers.

All (41) torsion outliers are listed below:

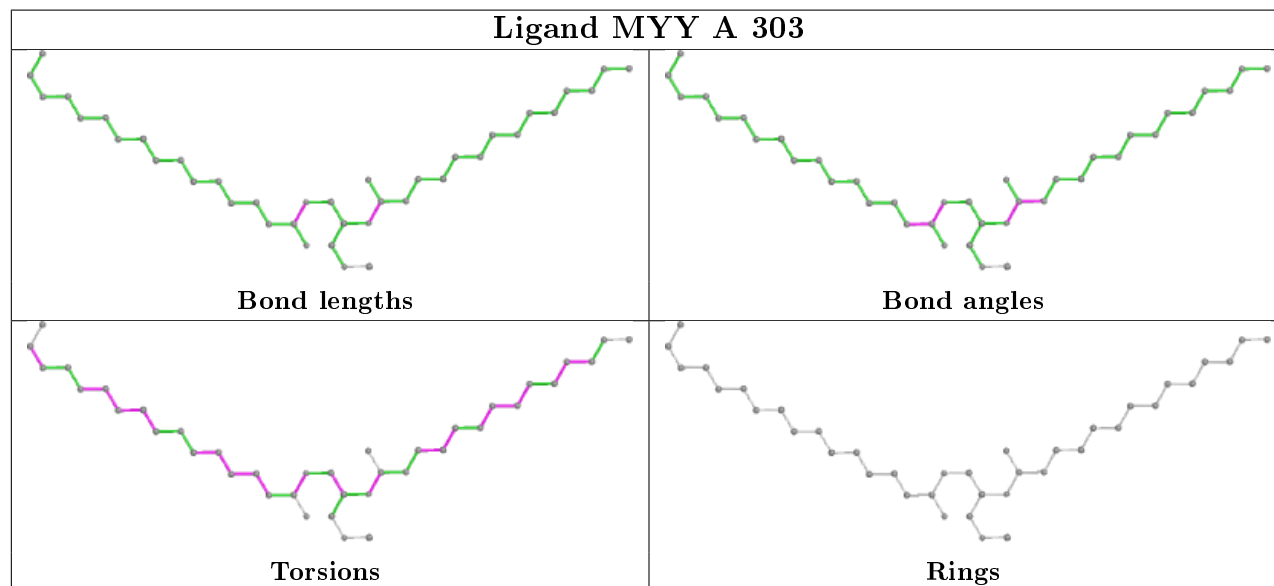
Mol	Chain	Res	Type	Atoms
4	A	303	MYX	O9-C7-O7-C5
4	A	303	MYX	C8-C7-O7-C5
4	A	303	MYX	O10-C23-O8-C6
4	A	303	MYX	C24-C23-O8-C6
4	B	304	MYX	C24-C23-O8-C6
4	B	304	MYX	O10-C23-O8-C6
4	B	304	MYX	C8-C7-O7-C5
4	B	304	MYX	O9-C7-O7-C5
4	A	303	MYX	C23-C24-C25-C26
4	B	304	MYX	C7-C8-C9-C10
4	B	304	MYX	C14-C15-C16-C17
4	A	303	MYX	C11-C10-C9-C8
4	A	303	MYX	C15-C16-C17-C18
4	B	304	MYX	C16-C17-C18-C19
4	B	304	MYX	C15-C16-C17-C18
4	A	303	MYX	C32-C33-C34-C35
4	B	304	MYX	C11-C12-C13-C14
4	A	303	MYX	C29-C30-C31-C32
4	A	303	MYX	C24-C25-C26-C27
4	B	304	MYX	C31-C32-C33-C34
4	B	304	MYX	C27-C28-C29-C30
4	A	303	MYX	C30-C31-C32-C33
4	A	303	MYX	C12-C13-C14-C15
4	A	303	MYX	C9-C10-C11-C12
4	B	304	MYX	C9-C10-C11-C12
4	A	303	MYX	C25-C26-C27-C28
4	B	304	MYX	C12-C13-C14-C15
4	A	303	MYX	C13-C14-C15-C16
4	A	303	MYX	C16-C17-C18-C19
4	B	304	MYX	C17-C18-C19-C20
4	B	304	MYX	C35-C36-C37-C38
4	B	304	MYX	C28-C29-C30-C31
4	A	303	MYX	C26-C27-C28-C29
4	B	304	MYX	C26-C27-C28-C29
4	A	303	MYX	C35-C36-C37-C38
4	A	303	MYX	C31-C32-C33-C34
4	A	303	MYX	C4-C5-C6-O8
4	A	303	MYX	O7-C5-C6-O8
4	B	304	MYX	C11-C10-C9-C8
4	A	303	MYX	C11-C12-C13-C14
4	B	304	MYX	C33-C34-C35-C36

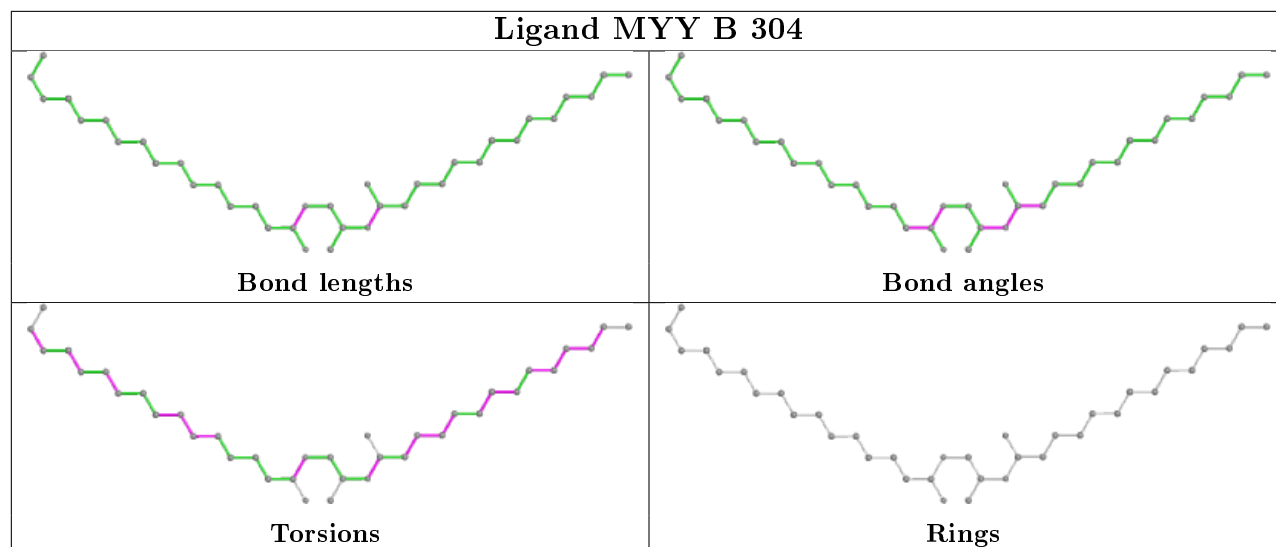
There are no ring outliers.

3 monomers are involved in 18 short contacts:

Mol	Chain	Res	Type	Clashes	Symm-Clashes
4	A	303	MYY	12	0
3	A	258	35C	4	0
4	B	304	MYY	10	0

The following is a two-dimensional graphical depiction of Mogul quality analysis of bond lengths, bond angles, torsion angles, and ring geometry for all instances of the Ligand of Interest. In addition, ligands with molecular weight > 250 and outliers as shown on the validation Tables will also be included. For torsion angles, if less than 5% of the Mogul distribution of torsion angles is within 10 degrees of the torsion angle in question, then that torsion angle is considered an outlier. Any bond that is central to one or more torsion angles identified as an outlier by Mogul will be highlighted in the graph. For rings, the root-mean-square deviation (RMSD) between the ring in question and similar rings identified by Mogul is calculated over all ring torsion angles. If the average RMSD is greater than 60 degrees and the minimal RMSD between the ring in question and any Mogul-identified rings is also greater than 60 degrees, then that ring is considered an outlier. The outliers are highlighted in purple. The color gray indicates Mogul did not find sufficient equivalents in the CSD to analyse the geometry.





5.7 Other polymers [i](#)

There are no such residues in this entry.

5.8 Polymer linkage issues [i](#)

There are no chain breaks in this entry.

6 Fit of model and data ⓘ

6.1 Protein, DNA and RNA chains ⓘ

In the following table, the column labelled ‘#RSRZ> 2’ contains the number (and percentage) of RSRZ outliers, followed by percent RSRZ outliers for the chain as percentile scores relative to all X-ray entries and entries of similar resolution. The OWAB column contains the minimum, median, 95th percentile and maximum values of the occupancy-weighted average B-factor per residue. The column labelled ‘Q< 0.9’ lists the number of (and percentage) of residues with an average occupancy less than 0.9.

Mol	Chain	Analysed	<RSRZ>	#RSRZ>2	OWAB(Å ²)	Q<0.9
1	A	256/257 (99%)	-0.43	6 (2%) 60 57	36, 58, 82, 101	0
1	B	255/257 (99%)	-0.00	11 (4%) 35 30	49, 116, 135, 138	0
All	All	511/514 (99%)	-0.22	17 (3%) 46 41	36, 71, 132, 138	0

All (17) RSRZ outliers are listed below:

Mol	Chain	Res	Type	RSRZ
1	A	241	ASP	4.7
1	A	239	ASP	4.0
1	B	67	GLY	3.9
1	A	240	ILE	3.6
1	B	243	GLU	3.4
1	A	242	GLY	2.9
1	B	71	SER	2.6
1	B	68	ASN	2.5
1	B	69	TRP	2.4
1	B	130	ASN	2.4
1	A	2	ALA	2.4
1	A	243	GLU	2.4
1	B	202	ASP	2.3
1	B	100	PRO	2.3
1	B	201	ALA	2.2
1	B	242	GLY	2.1
1	B	143	ASP	2.1

6.2 Non-standard residues in protein, DNA, RNA chains ⓘ

There are no non-standard protein/DNA/RNA residues in this entry.

6.3 Carbohydrates [i](#)

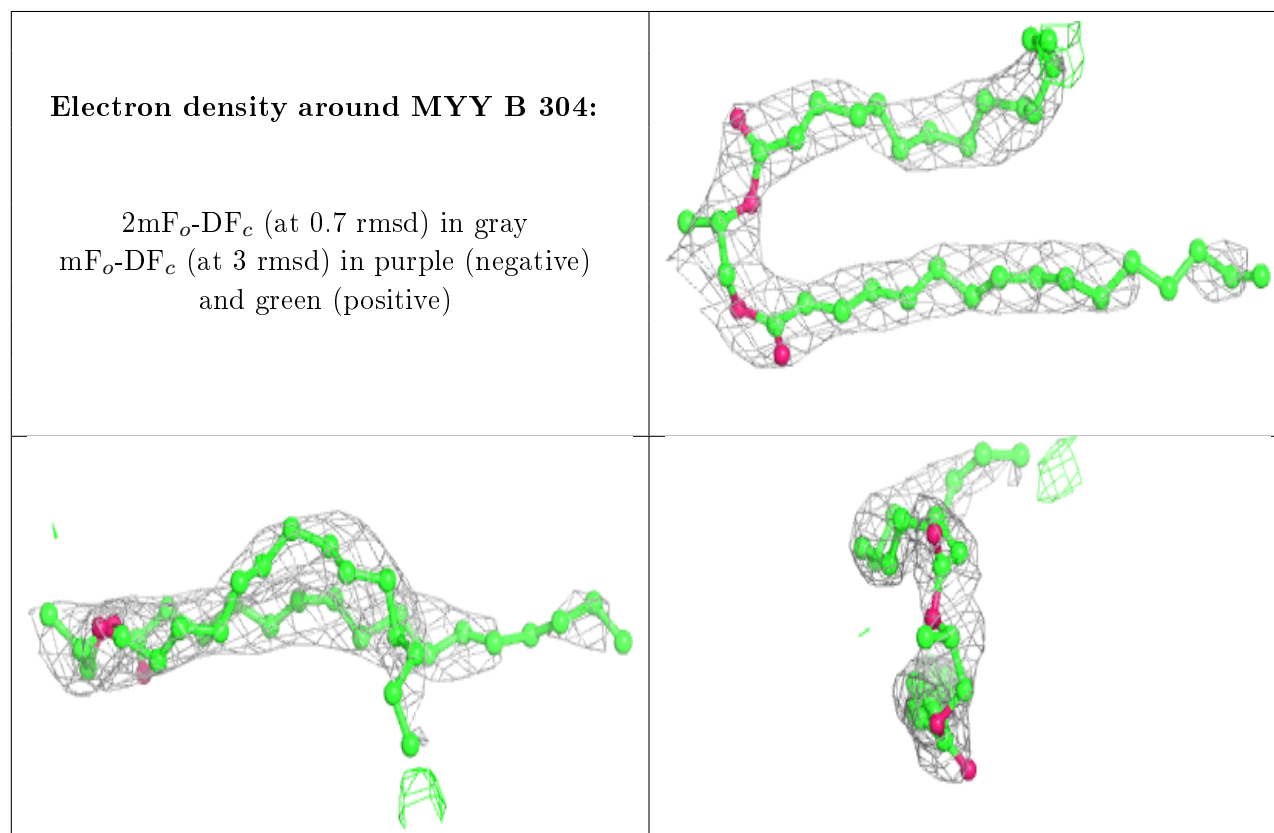
There are no carbohydrates in this entry.

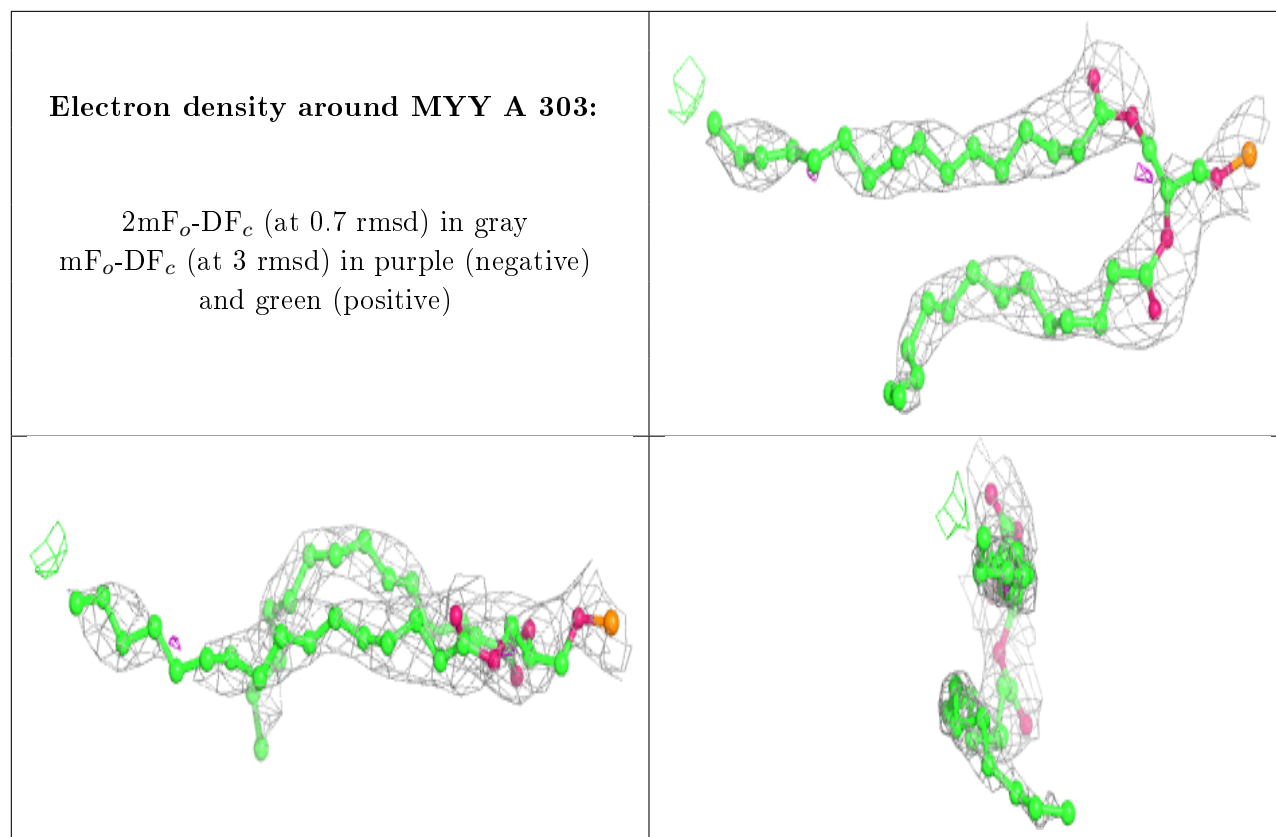
6.4 Ligands [i](#)

In the following table, the Atoms column lists the number of modelled atoms in the group and the number defined in the chemical component dictionary. The B-factors column lists the minimum, median, 95th percentile and maximum values of B factors of atoms in the group. The column labelled 'Q< 0.9' lists the number of atoms with occupancy less than 0.9.

Mol	Type	Chain	Res	Atoms	RSCC	RSR	B-factors(Å ²)	Q<0.9
4	MYY	B	304	37/42	0.77	0.32	68,79,96,97	0
4	MYY	A	303	39/42	0.84	0.27	61,79,101,105	0
2	FE	B	301	1/1	0.89	0.28	110,110,110,110	0
3	35C	A	258	10/10	0.97	0.15	67,68,70,77	0
2	FE	A	300	1/1	1.00	0.15	50,50,50,50	0

The following is a graphical depiction of the model fit to experimental electron density of all instances of the Ligand of Interest. In addition, ligands with molecular weight > 250 and outliers as shown on the geometry validation Tables will also be included. Each fit is shown from different orientation to approximate a three-dimensional view.





6.5 Other polymers [i](#)

There are no such residues in this entry.