



# wwPDB X-ray Structure Validation Summary Report ⓘ

Jun 15, 2020 – 05:02 am BST

PDB ID : 4O6I  
Title : 2.0A crystal structure of Lymphocytic Choriomeningitis Virus Nucleoprotein C-terminal Domain  
Authors : West, B.R.; Hastie, K.M.; Sapphire, E.O.  
Deposited on : 2013-12-20  
Resolution : 2.00 Å(reported)

This is a wwPDB X-ray Structure Validation Summary Report for a publicly released PDB entry.

We welcome your comments at [validation@mail.wwpdb.org](mailto:validation@mail.wwpdb.org)

A user guide is available at

<https://www.wwpdb.org/validation/2017/XrayValidationReportHelp>

with specific help available everywhere you see the ⓘ symbol.

---

The following versions of software and data (see [references ⓘ](#)) were used in the production of this report:

MolProbity : 4.02b-467  
Mogul : 1.8.5 (274361), CSD as541be (2020)  
Xtriage (Phenix) : 1.13  
EDS : 2.11  
Percentile statistics : 20191225.v01 (using entries in the PDB archive December 25th 2019)  
Refmac : 5.8.0158  
CCP4 : 7.0.044 (Gargrove)  
Ideal geometry (proteins) : Engh & Huber (2001)  
Ideal geometry (DNA, RNA) : Parkinson et al. (1996)  
Validation Pipeline (wwPDB-VP) : 2.11

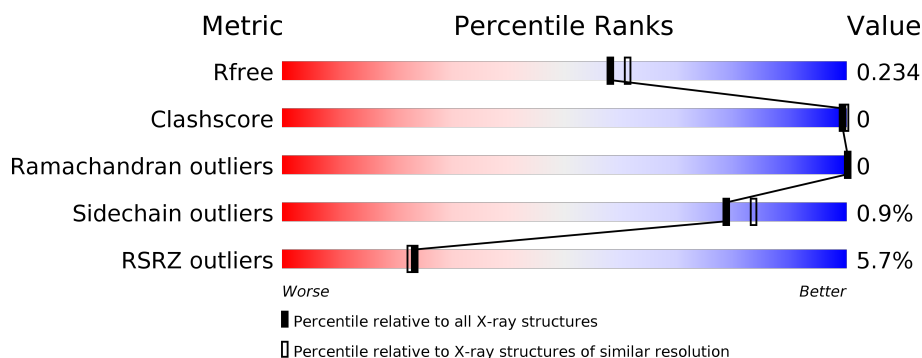
# 1 Overall quality at a glance

The following experimental techniques were used to determine the structure:

## *X-RAY DIFFRACTION*

The reported resolution of this entry is 2.00 Å.

Percentile scores (ranging between 0-100) for global validation metrics of the entry are shown in the following graphic. The table shows the number of entries on which the scores are based.



Metric	Whole archive (#Entries)	Similar resolution (#Entries, resolution range(Å))
$R_{free}$	130704	8085 (2.00-2.00)
Clashscore	141614	9178 (2.00-2.00)
Ramachandran outliers	138981	9054 (2.00-2.00)
Sidechain outliers	138945	9053 (2.00-2.00)
RSRZ outliers	127900	7900 (2.00-2.00)

The table below summarises the geometric issues observed across the polymeric chains and their fit to the electron density. The red, orange, yellow and green segments on the lower bar indicate the fraction of residues that contain outliers for  $\geq 3$ , 2, 1 and 0 types of geometric quality criteria respectively. A grey segment represents the fraction of residues that are not modelled. The numeric value for each fraction is indicated below the corresponding segment, with a dot representing fractions  $\leq 5\%$ . The upper red bar (where present) indicates the fraction of residues that have poor fit to the electron density. The numeric value is given above the bar.

Mol	Chain	Length	Quality of chain
1	A	233	<div> <div>5%</div> <div> <div></div> <div>86%</div> <div>•</div> <div>13%</div> </div> </div>
1	B	233	<div> <div>5%</div> <div> <div></div> <div>86%</div> <div>•</div> <div>12%</div> </div> </div>

## 2 Entry composition

There are 5 unique types of molecules in this entry. The entry contains 6575 atoms, of which 3181 are hydrogens and 0 are deuteriums.

In the tables below, the ZeroOcc column contains the number of atoms modelled with zero occupancy, the AltConf column contains the number of residues with at least one atom in alternate conformation and the Trace column contains the number of residues modelled with at most 2 atoms.

- Molecule 1 is a protein called Nucleoprotein.

Mol	Chain	Residues	Atoms						ZeroOcc	AltConf	Trace
1	A	202	Total	C	H	N	O	S	0	0	0
			3152	1009	1558	274	300	11			
1	B	204	Total	C	H	N	O	S	0	0	0
			3177	1018	1573	273	302	11			

There are 30 discrepancies between the modelled and reference sequences:

Chain	Residue	Modelled	Actual	Comment	Reference
A	326	MET	-	EXPRESSION TAG	UNP P09992
A	327	ALA	-	EXPRESSION TAG	UNP P09992
A	328	HIS	-	EXPRESSION TAG	UNP P09992
A	329	HIS	-	EXPRESSION TAG	UNP P09992
A	330	HIS	-	EXPRESSION TAG	UNP P09992
A	331	HIS	-	EXPRESSION TAG	UNP P09992
A	332	HIS	-	EXPRESSION TAG	UNP P09992
A	333	HIS	-	EXPRESSION TAG	UNP P09992
A	334	VAL	-	EXPRESSION TAG	UNP P09992
A	335	ASP	-	EXPRESSION TAG	UNP P09992
A	336	ASP	-	EXPRESSION TAG	UNP P09992
A	337	ASP	-	EXPRESSION TAG	UNP P09992
A	338	ASP	-	EXPRESSION TAG	UNP P09992
A	339	ARG	-	EXPRESSION TAG	UNP P09992
A	340	MET	-	EXPRESSION TAG	UNP P09992
B	326	MET	-	EXPRESSION TAG	UNP P09992
B	327	ALA	-	EXPRESSION TAG	UNP P09992
B	328	HIS	-	EXPRESSION TAG	UNP P09992
B	329	HIS	-	EXPRESSION TAG	UNP P09992
B	330	HIS	-	EXPRESSION TAG	UNP P09992
B	331	HIS	-	EXPRESSION TAG	UNP P09992
B	332	HIS	-	EXPRESSION TAG	UNP P09992
B	333	HIS	-	EXPRESSION TAG	UNP P09992
B	334	VAL	-	EXPRESSION TAG	UNP P09992
B	335	ASP	-	EXPRESSION TAG	UNP P09992

*Continued on next page...*

*Continued from previous page...*

Chain	Residue	Modelled	Actual	Comment	Reference
B	336	ASP	-	EXPRESSION TAG	UNP P09992
B	337	ASP	-	EXPRESSION TAG	UNP P09992
B	338	ASP	-	EXPRESSION TAG	UNP P09992
B	339	ARG	-	EXPRESSION TAG	UNP P09992
B	340	MET	-	EXPRESSION TAG	UNP P09992

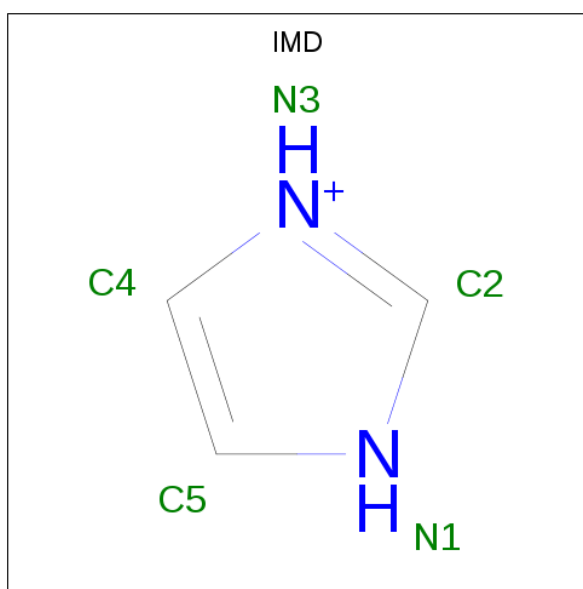
- Molecule 2 is ZINC ION (three-letter code: ZN) (formula: Zn).

Mol	Chain	Residues	Atoms	ZeroOcc	AltConf
2	B	1	Total Zn 1 1	0	0
2	A	1	Total Zn 1 1	0	0

- Molecule 3 is MAGNESIUM ION (three-letter code: MG) (formula: Mg).

Mol	Chain	Residues	Atoms	ZeroOcc	AltConf
3	B	1	Total Mg 1 1	0	0
3	A	1	Total Mg 1 1	0	0

- Molecule 4 is IMIDAZOLE (three-letter code: IMD) (formula: C<sub>3</sub>H<sub>5</sub>N<sub>2</sub>).



Mol	Chain	Residues	Atoms				ZeroOcc	AltConf
4	A	1	Total 10	C 3	H 5	N 2	0	0
4	A	1	Total 10	C 3	H 5	N 2	0	0
4	A	1	Total 10	C 3	H 5	N 2	0	0
4	A	1	Total 10	C 3	H 5	N 2	0	0
4	A	1	Total 10	C 3	H 5	N 2	0	0
4	B	1	Total 10	C 3	H 5	N 2	0	0
4	B	1	Total 10	C 3	H 5	N 2	0	0
4	B	1	Total 10	C 3	H 5	N 2	0	0
4	B	1	Total 10	C 3	H 5	N 2	0	0
4	B	1	Total 10	C 3	H 5	N 2	0	0

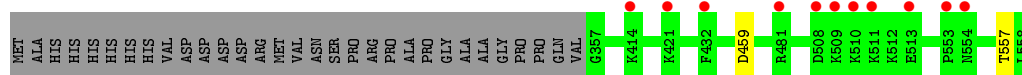
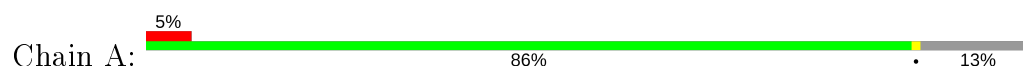
- Molecule 5 is water.

Mol	Chain	Residues	Atoms		ZeroOcc	AltConf
5	A	71	Total 71	O 71	0	0
5	B	71	Total 71	O 71	0	0

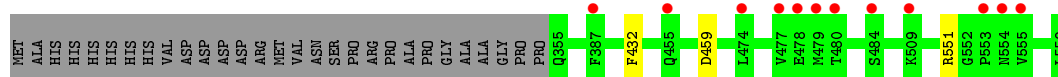
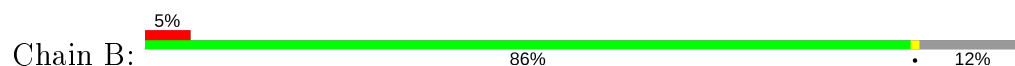
### 3 Residue-property plots [i](#)

These plots are drawn for all protein, RNA and DNA chains in the entry. The first graphic for a chain summarises the proportions of the various outlier classes displayed in the second graphic. The second graphic shows the sequence view annotated by issues in geometry and electron density. Residues are color-coded according to the number of geometric quality criteria for which they contain at least one outlier: green = 0, yellow = 1, orange = 2 and red = 3 or more. A red dot above a residue indicates a poor fit to the electron density ( $RSRZ > 2$ ). Stretches of 2 or more consecutive residues without any outlier are shown as a green connector. Residues present in the sample, but not in the model, are shown in grey.

- Molecule 1: Nucleoprotein



- Molecule 1: Nucleoprotein



## 4 Data and refinement statistics

Property	Value	Source
Space group	P 65	Depositor
Cell constants a, b, c, $\alpha$ , $\beta$ , $\gamma$	89.96 Å 89.96 Å 145.94 Å 90.00° 90.00° 120.00°	Depositor
Resolution (Å)	38.95 – 2.00 38.95 – 2.00	Depositor EDS
% Data completeness (in resolution range)	99.8 (38.95-2.00) 99.9 (38.95-2.00)	Depositor EDS
$R_{merge}$	(Not available)	Depositor
$R_{sym}$	(Not available)	Depositor
$\langle I/\sigma(I) \rangle$ <sup>1</sup>	1.91 (at 2.00 Å)	Xtriage
Refinement program	PHENIX	Depositor
R, $R_{free}$	0.209 , 0.228 0.219 , 0.234	Depositor DCC
$R_{free}$ test set	2274 reflections (5.05%)	wwPDB-VP
Wilson B-factor (Å <sup>2</sup> )	53.8	Xtriage
Anisotropy	0.349	Xtriage
Bulk solvent $k_{sol}$ (e/Å <sup>3</sup> ), $B_{sol}$ (Å <sup>2</sup> )	0.41 , 58.6	EDS
L-test for twinning <sup>2</sup>	$\langle  L  \rangle = 0.53$ , $\langle L^2 \rangle = 0.37$	Xtriage
Estimated twinning fraction	0.029 for h,-h-k,-l	Xtriage
$F_o, F_c$ correlation	0.96	EDS
Total number of atoms	6575	wwPDB-VP
Average B, all atoms (Å <sup>2</sup> )	72.0	wwPDB-VP

Xtriage's analysis on translational NCS is as follows: *The largest off-origin peak in the Patterson function is 3.95% of the height of the origin peak. No significant pseudotranslation is detected.*

<sup>1</sup>Intensities estimated from amplitudes.

<sup>2</sup>Theoretical values of  $\langle |L| \rangle$ ,  $\langle L^2 \rangle$  for acentric reflections are 0.5, 0.333 respectively for untwinned datasets, and 0.375, 0.2 for perfectly twinned datasets.

## 5 Model quality

### 5.1 Standard geometry

Bond lengths and bond angles in the following residue types are not validated in this section: MG, ZN, IMD

The Z score for a bond length (or angle) is the number of standard deviations the observed value is removed from the expected value. A bond length (or angle) with  $|Z| > 5$  is considered an outlier worth inspection. RMSZ is the root-mean-square of all Z scores of the bond lengths (or angles).

Mol	Chain	Bond lengths		Bond angles	
		RMSZ	$\# Z  > 5$	RMSZ	$\# Z  > 5$
1	A	0.21	0/1629	0.36	0/2204
1	B	0.21	0/1639	0.36	0/2216
All	All	0.21	0/3268	0.36	0/4420

There are no bond length outliers.

There are no bond angle outliers.

There are no chirality outliers.

There are no planarity outliers.

### 5.2 Too-close contacts

In the following table, the Non-H and H(model) columns list the number of non-hydrogen atoms and hydrogen atoms in the chain respectively. The H(added) column lists the number of hydrogen atoms added and optimized by MolProbity. The Clashes column lists the number of clashes within the asymmetric unit, whereas Symm-Clashes lists symmetry related clashes.

Mol	Chain	Non-H	H(model)	H(added)	Clashes	Symm-Clashes
1	A	1594	1558	1558	0	0
1	B	1604	1573	1573	1	0
2	A	1	0	0	0	0
2	B	1	0	0	0	0
3	A	1	0	0	0	0
3	B	1	0	0	0	0
4	A	25	25	25	0	0
4	B	25	25	25	0	0
5	A	71	0	0	0	0
5	B	71	0	0	0	0
All	All	3394	3181	3181	1	0



The all-atom clashscore is defined as the number of clashes found per 1000 atoms (including hydrogen atoms). The all-atom clashscore for this structure is 0.

All (1) close contacts within the same asymmetric unit are listed below, sorted by their clash magnitude.

Atom-1	Atom-2	Interatomic distance (Å)	Clash overlap (Å)
1:B:432:PHE:O	1:B:551:ARG:NH1	2.40	0.54

There are no symmetry-related clashes.

## 5.3 Torsion angles [i](#)

### 5.3.1 Protein backbone [i](#)

In the following table, the Percentiles column shows the percent Ramachandran outliers of the chain as a percentile score with respect to all X-ray entries followed by that with respect to entries of similar resolution.

The Analysed column shows the number of residues for which the backbone conformation was analysed, and the total number of residues.

Mol	Chain	Analysed	Favoured	Allowed	Outliers	Percentiles	
1	A	200/233 (86%)	195 (98%)	5 (2%)	0	100	100
1	B	202/233 (87%)	195 (96%)	7 (4%)	0	100	100
All	All	402/466 (86%)	390 (97%)	12 (3%)	0	100	100

There are no Ramachandran outliers to report.

### 5.3.2 Protein sidechains [i](#)

In the following table, the Percentiles column shows the percent sidechain outliers of the chain as a percentile score with respect to all X-ray entries followed by that with respect to entries of similar resolution.

The Analysed column shows the number of residues for which the sidechain conformation was analysed, and the total number of residues.

Mol	Chain	Analysed	Rotameric	Outliers	Percentiles	
1	A	175/205 (85%)	173 (99%)	2 (1%)	73	78
1	B	176/205 (86%)	175 (99%)	1 (1%)	86	90
All	All	351/410 (86%)	348 (99%)	3 (1%)	78	83

All (3) residues with a non-rotameric sidechain are listed below:

Mol	Chain	Res	Type
1	A	459	ASP
1	A	557	THR
1	B	459	ASP

Some sidechains can be flipped to improve hydrogen bonding and reduce clashes. There are no such sidechains identified.

### 5.3.3 RNA [i](#)

There are no RNA molecules in this entry.

## 5.4 Non-standard residues in protein, DNA, RNA chains [i](#)

There are no non-standard protein/DNA/RNA residues in this entry.

## 5.5 Carbohydrates [i](#)

There are no carbohydrates in this entry.

## 5.6 Ligand geometry [i](#)

Of 14 ligands modelled in this entry, 4 are monoatomic - leaving 10 for Mogul analysis.

In the following table, the Counts columns list the number of bonds (or angles) for which Mogul statistics could be retrieved, the number of bonds (or angles) that are observed in the model and the number of bonds (or angles) that are defined in the Chemical Component Dictionary. The Link column lists molecule types, if any, to which the group is linked. The Z score for a bond length (or angle) is the number of standard deviations the observed value is removed from the expected value. A bond length (or angle) with  $|Z| > 2$  is considered an outlier worth inspection. RMSZ is the root-mean-square of all Z scores of the bond lengths (or angles).

Mol	Type	Chain	Res	Link	Bond lengths			Bond angles		
					Counts	RMSZ	$\# Z  > 2$	Counts	RMSZ	$\# Z  > 2$
4	IMD	B	605	-	3,5,5	0.41	0	4,5,5	0.57	0
4	IMD	A	605	-	3,5,5	0.42	0	4,5,5	0.58	0
4	IMD	B	604	-	3,5,5	0.41	0	4,5,5	0.58	0
4	IMD	A	606	-	3,5,5	0.41	0	4,5,5	0.57	0
4	IMD	B	603	-	3,5,5	0.43	0	4,5,5	0.59	0
4	IMD	A	607	-	3,5,5	0.41	0	4,5,5	0.57	0
4	IMD	B	607	-	3,5,5	0.41	0	4,5,5	0.59	0

Mol	Type	Chain	Res	Link	Bond lengths			Bond angles		
					Counts	RMSZ	# Z  > 2	Counts	RMSZ	# Z  > 2
4	IMD	A	604	-	3,5,5	0.42	0	4,5,5	0.58	0
4	IMD	A	603	-	3,5,5	0.42	0	4,5,5	0.57	0
4	IMD	B	606	-	3,5,5	0.42	0	4,5,5	0.58	0

In the following table, the Chirals column lists the number of chiral outliers, the number of chiral centers analysed, the number of these observed in the model and the number defined in the Chemical Component Dictionary. Similar counts are reported in the Torsion and Rings columns. '-' means no outliers of that kind were identified.

Mol	Type	Chain	Res	Link	Chirals	Torsions	Rings
4	IMD	B	605	-	-	-	0/1/1/1
4	IMD	A	605	-	-	-	0/1/1/1
4	IMD	B	604	-	-	-	0/1/1/1
4	IMD	A	606	-	-	-	0/1/1/1
4	IMD	B	603	-	-	-	0/1/1/1
4	IMD	A	607	-	-	-	0/1/1/1
4	IMD	B	607	-	-	-	0/1/1/1
4	IMD	A	604	-	-	-	0/1/1/1
4	IMD	A	603	-	-	-	0/1/1/1
4	IMD	B	606	-	-	-	0/1/1/1

There are no bond length outliers.

There are no bond angle outliers.

There are no chirality outliers.

There are no torsion outliers.

There are no ring outliers.

No monomer is involved in short contacts.

## 5.7 Other polymers

There are no such residues in this entry.

## 5.8 Polymer linkage issues

There are no chain breaks in this entry.

## 6 Fit of model and data [i](#)

### 6.1 Protein, DNA and RNA chains [i](#)

In the following table, the column labelled ‘#RSRZ> 2’ contains the number (and percentage) of RSRZ outliers, followed by percent RSRZ outliers for the chain as percentile scores relative to all X-ray entries and entries of similar resolution. The OWAB column contains the minimum, median, 95<sup>th</sup> percentile and maximum values of the occupancy-weighted average B-factor per residue. The column labelled ‘Q< 0.9’ lists the number of (and percentage) of residues with an average occupancy less than 0.9.

Mol	Chain	Analysed	<RSRZ>	#RSRZ>2	OWAB(Å <sup>2</sup> )	Q<0.9
1	A	202/233 (86%)	0.48	11 (5%) 25 24	48, 62, 92, 111	0
1	B	204/233 (87%)	0.43	12 (5%) 22 21	49, 64, 89, 108	0
All	All	406/466 (87%)	0.45	23 (5%) 23 23	48, 63, 91, 111	0

The worst 5 of 23 RSRZ outliers are listed below:

Mol	Chain	Res	Type	RSRZ
1	B	480	THR	6.1
1	B	477	VAL	4.9
1	B	479	MET	4.8
1	B	478	GLU	4.6
1	A	553	PRO	4.5

### 6.2 Non-standard residues in protein, DNA, RNA chains [i](#)

There are no non-standard protein/DNA/RNA residues in this entry.

### 6.3 Carbohydrates [i](#)

There are no carbohydrates in this entry.

### 6.4 Ligands [i](#)

In the following table, the Atoms column lists the number of modelled atoms in the group and the number defined in the chemical component dictionary. The B-factors column lists the minimum, median, 95<sup>th</sup> percentile and maximum values of B factors of atoms in the group. The column labelled ‘Q< 0.9’ lists the number of atoms with occupancy less than 0.9.

Mol	Type	Chain	Res	Atoms	RSCC	RSR	B-factors( $\text{\AA}^2$ )	Q<0.9
4	IMD	B	605	5/5	0.70	0.24	89,104,123,125	0
4	IMD	A	606	5/5	0.71	0.23	77,88,95,106	0
3	MG	B	602	1/1	0.73	0.09	69,69,69,69	0
4	IMD	B	607	5/5	0.80	0.16	81,94,106,113	0
4	IMD	A	607	5/5	0.81	0.19	71,80,95,96	0
4	IMD	A	604	5/5	0.82	0.17	81,92,106,111	0
3	MG	A	602	1/1	0.83	0.08	69,69,69,69	0
4	IMD	A	605	5/5	0.83	0.17	68,81,98,105	0
4	IMD	A	603	5/5	0.87	0.14	90,93,111,112	0
4	IMD	B	606	5/5	0.87	0.14	77,83,97,100	0
4	IMD	B	603	5/5	0.90	0.16	77,87,103,105	0
4	IMD	B	604	5/5	0.92	0.23	71,85,95,104	0
2	ZN	B	601	1/1	0.98	0.18	54,54,54,54	0
2	ZN	A	601	1/1	0.99	0.18	54,54,54,54	0

## 6.5 Other polymers [i](#)

There are no such residues in this entry.