



Full wwPDB X-ray Structure Validation Report ⓘ

May 24, 2020 – 01:00 am BST

PDB ID : 1O8C
Title : CRYSTAL STRUCTURE OF E. COLI K-12 YHDH WITH BOUND NADPH
Authors : Sulzenbacher, G.; Roig-Zamboni, V.; Pagot, F.; Grisel, S.; Salamoni, A.; Valencia, C.; Bignon, C.; Vincentelli, R.; Tegoni, M.; Cambillau, C.
Deposited on : 2002-11-26
Resolution : 2.60 Å(reported)

This is a Full wwPDB X-ray Structure Validation Report for a publicly released PDB entry.

We welcome your comments at validation@mail.wwpdb.org

A user guide is available at

<https://www.wwpdb.org/validation/2017/XrayValidationReportHelp>

with specific help available everywhere you see the ⓘ symbol.

The following versions of software and data (see [references ⓘ](#)) were used in the production of this report:

MolProbity : 4.02b-467
Mogul : 1.8.5 (274361), CSD as541be (2020)
Xtriage (Phenix) : 1.13
EDS : 2.11
buster-report : 1.1.7 (2018)
Percentile statistics : 20191225.v01 (using entries in the PDB archive December 25th 2019)
Refmac : 5.8.0158
CCP4 : 7.0.044 (Gargrove)
Ideal geometry (proteins) : Engh & Huber (2001)
Ideal geometry (DNA, RNA) : Parkinson et al. (1996)
Validation Pipeline (wwPDB-VP) : 2.11

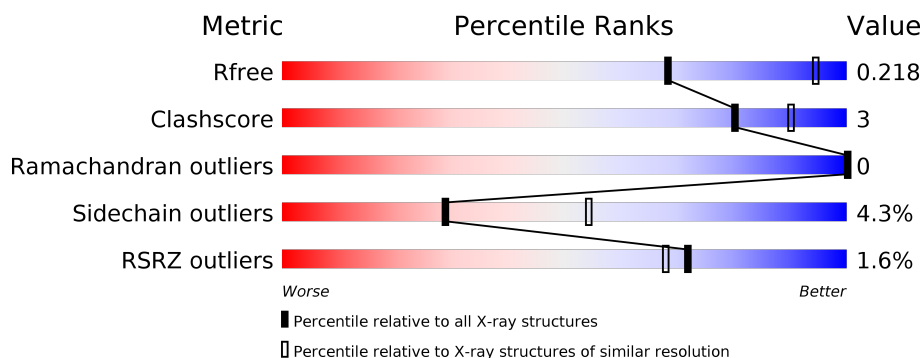
1 Overall quality at a glance

The following experimental techniques were used to determine the structure:

X-RAY DIFFRACTION

The reported resolution of this entry is 2.60 Å.

Percentile scores (ranging between 0-100) for global validation metrics of the entry are shown in the following graphic. The table shows the number of entries on which the scores are based.



Metric	Whole archive (#Entries)	Similar resolution (#Entries, resolution range(Å))
R_{free}	130704	3163 (2.60-2.60)
Clashscore	141614	3518 (2.60-2.60)
Ramachandran outliers	138981	3455 (2.60-2.60)
Sidechain outliers	138945	3455 (2.60-2.60)
RSRZ outliers	127900	3104 (2.60-2.60)

The table below summarises the geometric issues observed across the polymeric chains and their fit to the electron density. The red, orange, yellow and green segments on the lower bar indicate the fraction of residues that contain outliers for ≥ 3 , 2, 1 and 0 types of geometric quality criteria respectively. A grey segment represents the fraction of residues that are not modelled. The numeric value for each fraction is indicated below the corresponding segment, with a dot representing fractions $\leq 5\%$. The upper red bar (where present) indicates the fraction of residues that have poor fit to the electron density. The numeric value is given above the bar.

Mol	Chain	Length	Quality of chain
1	A	345	<div> <div style="width: 100%; height: 10px; background: linear-gradient(to right, red, orange, yellow, green, grey);"></div> <div style="display: flex; justify-content: space-between; font-size: 0.8em;"> % 86% 7% • 6% </div> </div>
1	B	345	<div> <div style="width: 100%; height: 10px; background: linear-gradient(to right, red, orange, yellow, green, grey);"></div> <div style="display: flex; justify-content: space-between; font-size: 0.8em;"> % 85% 9% • 6% </div> </div>
1	C	345	<div> <div style="width: 100%; height: 10px; background: linear-gradient(to right, red, orange, yellow, green, grey);"></div> <div style="display: flex; justify-content: space-between; font-size: 0.8em;"> 3% 83% 9% • 6% </div> </div>
1	D	345	<div> <div style="width: 100%; height: 10px; background: linear-gradient(to right, red, orange, yellow, green, grey);"></div> <div style="display: flex; justify-content: space-between; font-size: 0.8em;"> % 86% 7% 6% </div> </div>

2 Entry composition ⓘ

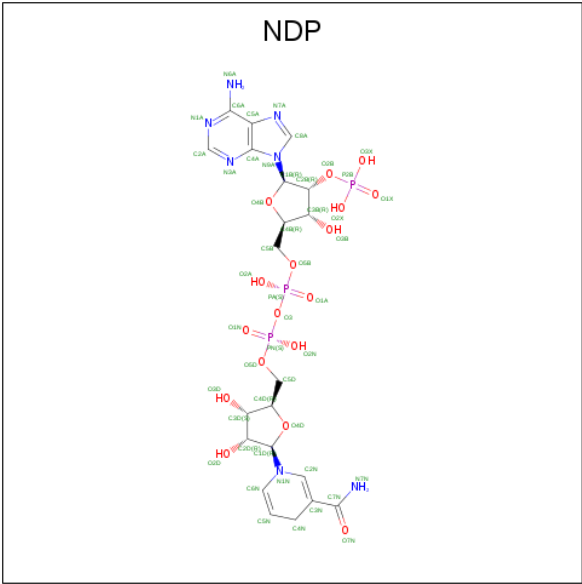
There are 3 unique types of molecules in this entry. The entry contains 10292 atoms, of which 0 are hydrogens and 0 are deuteriums.

In the tables below, the ZeroOcc column contains the number of atoms modelled with zero occupancy, the AltConf column contains the number of residues with at least one atom in alternate conformation and the Trace column contains the number of residues modelled with at most 2 atoms.

- Molecule 1 is a protein called YHDH.

Mol	Chain	Residues	Atoms					ZeroOcc	AltConf	Trace
1	A	324	Total	C	N	O	S	0	0	0
			2440	1538	430	461	11			
1	B	324	Total	C	N	O	S	0	0	0
			2440	1538	430	461	11			
1	C	323	Total	C	N	O	S	0	0	0
			2432	1532	429	460	11			
1	D	324	Total	C	N	O	S	0	0	0
			2440	1538	430	461	11			

- Molecule 2 is NADPH DIHYDRO-NICOTINAMIDE-ADENINE-DINUCLEOTIDE PHOSPHATE (three-letter code: NDP) (formula: C₂₁H₃₀N₇O₁₇P₃).



Mol	Chain	Residues	Atoms					ZeroOcc	AltConf
2	A	1	Total	C	N	O	P	0	0
			48	21	7	17	3		
2	B	1	Total	C	N	O	P	0	0
			48	21	7	17	3		

Continued on next page...

Continued from previous page...

Mol	Chain	Residues	Atoms					ZeroOcc	AltConf
2	C	1	Total	C	N	O	P	0	0
			48	21	7	17	3		
2	D	1	Total	C	N	O	P	0	0
			48	21	7	17	3		

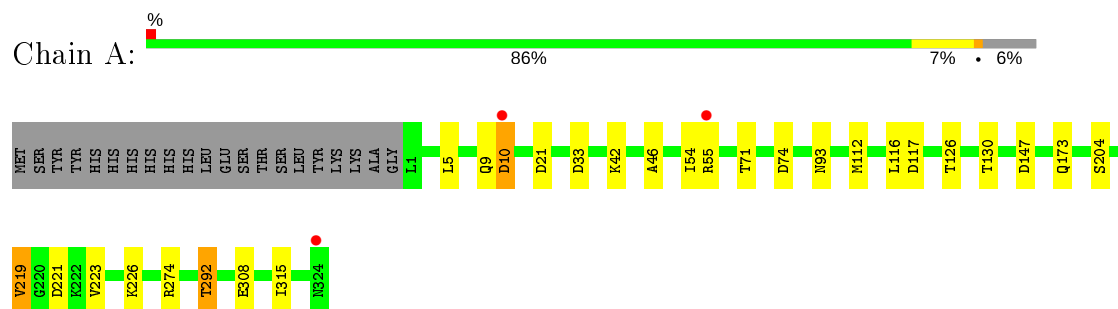
- Molecule 3 is water.

Mol	Chain	Residues	Atoms		ZeroOcc	AltConf
3	A	118	Total	O	0	0
			118	118		
3	B	75	Total	O	0	0
			75	75		
3	C	95	Total	O	0	0
			95	95		
3	D	60	Total	O	0	0
			60	60		

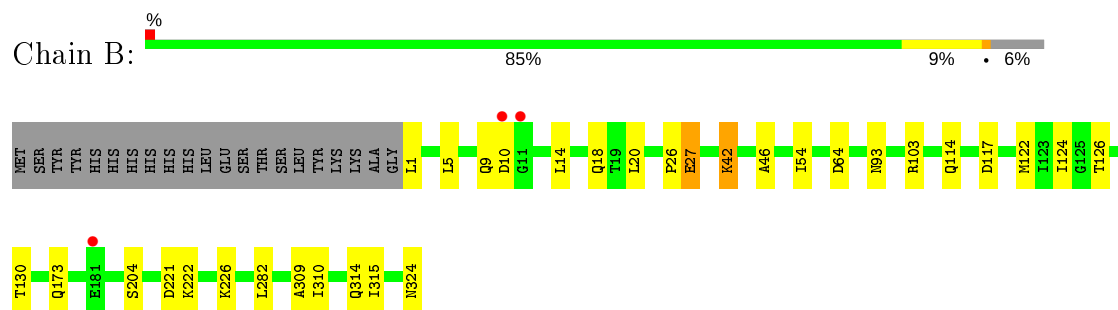
3 Residue-property plots [i](#)

These plots are drawn for all protein, RNA and DNA chains in the entry. The first graphic for a chain summarises the proportions of the various outlier classes displayed in the second graphic. The second graphic shows the sequence view annotated by issues in geometry and electron density. Residues are color-coded according to the number of geometric quality criteria for which they contain at least one outlier: green = 0, yellow = 1, orange = 2 and red = 3 or more. A red dot above a residue indicates a poor fit to the electron density ($RSRZ > 2$). Stretches of 2 or more consecutive residues without any outlier are shown as a green connector. Residues present in the sample, but not in the model, are shown in grey.

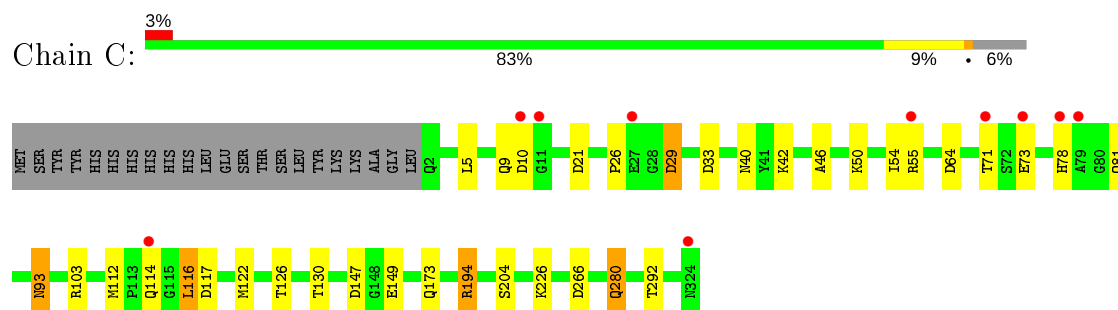
• Molecule 1: YHDH



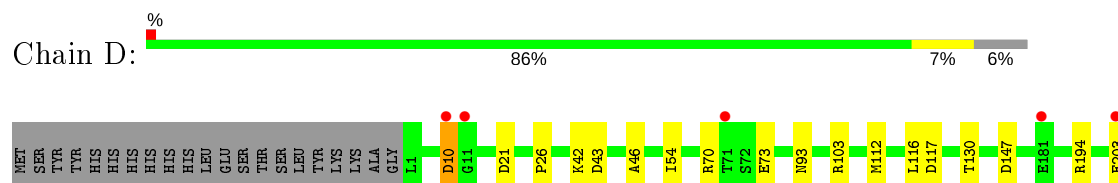
• Molecule 1: YHDH



• Molecule 1: YHDH



• Molecule 1: YHDH



S204	K226	M253	S267	S289	Q293	I315	N324
------	------	------	------	------	------	------	------

4 Data and refinement statistics

Property	Value	Source
Space group	P 61	Depositor
Cell constants a, b, c, α , β , γ	189.31 Å 189.31 Å 98.65 Å 90.00° 90.00° 120.00°	Depositor
Resolution (Å)	158.11 – 2.60 43.74 – 2.60	Depositor EDS
% Data completeness (in resolution range)	100.0 (158.11-2.60) 100.0 (43.74-2.60)	Depositor EDS
R_{merge}	0.05	Depositor
R_{sym}	(Not available)	Depositor
$\langle I/\sigma(I) \rangle$ ¹	6.87 (at 2.61 Å)	Xtriage
Refinement program	REFMAC 5.1.24	Depositor
R, R_{free}	0.171 , 0.202 0.195 , 0.218	Depositor DCC
R_{free} test set	6158 reflections (5.07%)	wwPDB-VP
Wilson B-factor (Å ²)	33.7	Xtriage
Anisotropy	0.065	Xtriage
Bulk solvent k_{sol} (e/Å ³), B_{sol} (Å ²)	0.34 , 32.5	EDS
L-test for twinning ²	$\langle L \rangle = 0.50$, $\langle L^2 \rangle = 0.33$	Xtriage
Estimated twinning fraction	0.022 for h,-h-k,-l	Xtriage
F_o, F_c correlation	0.94	EDS
Total number of atoms	10292	wwPDB-VP
Average B, all atoms (Å ²)	46.0	wwPDB-VP

Xtriage's analysis on translational NCS is as follows: *The largest off-origin peak in the Patterson function is 3.73% of the height of the origin peak. No significant pseudotranslation is detected.*

¹ Intensities estimated from amplitudes.

² Theoretical values of $\langle |L| \rangle$, $\langle L^2 \rangle$ for acentric reflections are 0.5, 0.333 respectively for untwinned datasets, and 0.375, 0.2 for perfectly twinned datasets.

5 Model quality ⓘ

5.1 Standard geometry ⓘ

Bond lengths and bond angles in the following residue types are not validated in this section: NDP

The Z score for a bond length (or angle) is the number of standard deviations the observed value is removed from the expected value. A bond length (or angle) with $|Z| > 5$ is considered an outlier worth inspection. RMSZ is the root-mean-square of all Z scores of the bond lengths (or angles).

Mol	Chain	Bond lengths		Bond angles	
		RMSZ	$\# Z > 5$	RMSZ	$\# Z > 5$
1	A	0.47	0/2484	0.72	7/3371 (0.2%)
1	B	0.44	0/2484	0.69	2/3371 (0.1%)
1	C	0.44	0/2476	0.72	8/3360 (0.2%)
1	D	0.44	0/2484	0.70	4/3371 (0.1%)
All	All	0.45	0/9928	0.71	21/13473 (0.2%)

There are no bond length outliers.

All (21) bond angle outliers are listed below:

Mol	Chain	Res	Type	Atoms	Z	Observed(°)	Ideal(°)
1	A	117	ASP	CB-CG-OD2	6.23	123.90	118.30
1	A	221	ASP	CB-CG-OD2	6.19	123.87	118.30
1	C	194	ARG	NE-CZ-NH2	-6.18	117.21	120.30
1	A	147	ASP	CB-CG-OD2	6.15	123.84	118.30
1	C	33	ASP	CB-CG-OD2	6.10	123.79	118.30
1	D	117	ASP	CB-CG-OD2	6.08	123.77	118.30
1	C	147	ASP	CB-CG-OD2	5.99	123.69	118.30
1	A	21	ASP	CB-CG-OD2	5.77	123.49	118.30
1	D	10	ASP	CB-CG-OD2	5.76	123.49	118.30
1	A	74	ASP	CB-CG-OD2	5.55	123.29	118.30
1	B	10	ASP	CB-CG-OD2	5.52	123.27	118.30
1	C	117	ASP	CB-CG-OD2	5.40	123.16	118.30
1	B	117	ASP	CB-CG-OD2	5.38	123.14	118.30
1	C	10	ASP	CB-CG-OD2	5.36	123.12	118.30
1	C	21	ASP	CB-CG-OD2	5.36	123.12	118.30
1	D	147	ASP	CB-CG-OD2	5.34	123.11	118.30
1	C	266	ASP	CB-CG-OD2	5.33	123.10	118.30
1	A	10	ASP	CB-CG-OD2	5.23	123.01	118.30
1	A	33	ASP	CB-CG-OD2	5.16	122.95	118.30
1	C	29	ASP	CB-CG-OD2	5.08	122.88	118.30

Continued on next page...

Continued from previous page...

Mol	Chain	Res	Type	Atoms	Z	Observed(°)	Ideal(°)
1	D	43	ASP	CB-CG-OD2	5.06	122.85	118.30

There are no chirality outliers.

There are no planarity outliers.

5.2 Too-close contacts ⓘ

In the following table, the Non-H and H(model) columns list the number of non-hydrogen atoms and hydrogen atoms in the chain respectively. The H(added) column lists the number of hydrogen atoms added and optimized by MolProbity. The Clashes column lists the number of clashes within the asymmetric unit, whereas Symm-Clashes lists symmetry related clashes.

Mol	Chain	Non-H	H(model)	H(added)	Clashes	Symm-Clashes
1	A	2440	0	2457	9	0
1	B	2440	0	2457	20	0
1	C	2432	0	2443	15	0
1	D	2440	0	2457	9	0
2	A	48	0	26	2	0
2	B	48	0	26	2	0
2	C	48	0	26	3	0
2	D	48	0	26	2	0
3	A	118	0	0	1	0
3	B	75	0	0	1	0
3	C	95	0	0	2	0
3	D	60	0	0	0	0
All	All	10292	0	9918	53	0

The all-atom clashscore is defined as the number of clashes found per 1000 atoms (including hydrogen atoms). The all-atom clashscore for this structure is 3.

All (53) close contacts within the same asymmetric unit are listed below, sorted by their clash magnitude.

Atom-1	Atom-2	Interatomic distance (Å)	Clash overlap (Å)
1:C:280:GLN:NE2	3:C:2078:HOH:O	2.20	0.69
1:C:93:ASN:C	1:C:93:ASN:HD22	2.00	0.65
1:C:149:GLU:OE2	1:C:194:ARG:NH2	2.30	0.64
1:D:46:ALA:HB1	1:D:54:ILE:HD12	1.81	0.63
1:A:204:SER:HB3	1:A:226:LYS:HD2	1.81	0.63
1:D:46:ALA:HB1	1:D:54:ILE:CD1	2.29	0.62
1:B:221:ASP:CG	1:B:222:LYS:H	2.01	0.62

Continued on next page...

Continued from previous page...

Atom-1	Atom-2	Interatomic distance (Å)	Clash overlap (Å)
1:C:46:ALA:HB1	1:C:54:ILE:HD12	1.83	0.60
1:D:130:THR:OG1	2:D:1325:NDP:H41N	2.02	0.59
1:B:46:ALA:HB1	1:B:54:ILE:CD1	2.33	0.59
1:A:46:ALA:HB1	1:A:54:ILE:CD1	2.33	0.58
1:D:26:PRO:O	1:D:103:ARG:HD2	2.05	0.57
1:C:130:THR:OG1	2:C:1325:NDP:H41N	2.05	0.56
1:A:46:ALA:HB1	1:A:54:ILE:HD12	1.87	0.56
1:C:46:ALA:HB1	1:C:54:ILE:CD1	2.37	0.54
1:B:26:PRO:O	1:B:103:ARG:HD2	2.08	0.53
1:D:267:SER:N	2:D:1325:NDP:O7N	2.38	0.53
1:A:219:VAL:HG22	1:A:223:VAL:HB	1.91	0.52
1:C:126:THR:HG22	2:C:1325:NDP:H5N	1.94	0.50
1:A:130:THR:OG1	2:A:1325:NDP:H41N	2.11	0.50
1:C:204:SER:HB3	1:C:226:LYS:HD2	1.92	0.50
1:A:292:THR:CG2	3:A:2104:HOH:O	2.60	0.49
1:B:310:ILE:HG12	1:B:315:ILE:HG12	1.94	0.49
1:B:221:ASP:CG	1:B:222:LYS:N	2.65	0.49
1:B:46:ALA:HB1	1:B:54:ILE:HD11	1.93	0.48
1:C:112:MET:HE2	1:C:116:LEU:HB3	1.95	0.48
1:B:204:SER:HB3	1:B:226:LYS:HD2	1.95	0.47
1:C:26:PRO:O	1:C:103:ARG:HD3	2.15	0.47
1:B:9:GLN:HE21	1:B:14:LEU:HD11	1.79	0.47
1:B:46:ALA:HB1	1:B:54:ILE:HD12	1.97	0.47
1:A:126:THR:HG22	2:A:1325:NDP:H5N	1.98	0.46
1:B:5:LEU:HD23	1:B:18:GLN:NE2	2.31	0.45
1:C:40:ASN:HB3	3:C:2094:HOH:O	2.16	0.45
1:B:126:THR:HG22	2:B:1325:NDP:H5N	1.97	0.45
1:B:27:GLU:CA	1:B:27:GLU:OE1	2.64	0.45
1:A:112:MET:HE3	1:A:116:LEU:HB3	1.98	0.45
1:C:78:HIS:CE1	1:C:81:GLN:HB2	2.52	0.45
1:B:130:THR:OG1	2:B:1325:NDP:H41N	2.18	0.44
1:B:1:LEU:HB3	1:B:20:LEU:O	2.18	0.44
1:B:64:ASP:HB3	1:B:122:MET:SD	2.58	0.44
1:D:289:SER:O	1:D:293:GLN:HB2	2.18	0.43
1:B:315:ILE:HD12	1:B:315:ILE:O	2.18	0.43
1:C:64:ASP:HB3	1:C:122:MET:SD	2.58	0.43
1:C:130:THR:OG1	2:C:1325:NDP:C5N	2.68	0.42
1:D:112:MET:HE3	1:D:116:LEU:HB3	2.02	0.42
1:B:315:ILE:C	1:B:315:ILE:HD12	2.41	0.41
1:D:46:ALA:HB1	1:D:54:ILE:HD11	2.00	0.41
1:A:46:ALA:HB1	1:A:54:ILE:HD11	2.01	0.41

Continued on next page...

Continued from previous page...

Atom-1	Atom-2	Interatomic distance (Å)	Clash overlap (Å)
1:C:112:MET:CE	1:C:116:LEU:HB3	2.51	0.41
1:D:204:SER:HB3	1:D:226:LYS:HD2	2.03	0.41
1:B:124:ILE:HG21	1:B:282:LEU:HD13	2.03	0.41
1:B:309:ALA:HA	1:B:314:GLN:HE21	1.86	0.41
1:B:42:LYS:NZ	3:B:2010:HOH:O	2.42	0.40

There are no symmetry-related clashes.

5.3 Torsion angles [i](#)

5.3.1 Protein backbone [i](#)

In the following table, the Percentiles column shows the percent Ramachandran outliers of the chain as a percentile score with respect to all X-ray entries followed by that with respect to entries of similar resolution.

The Analysed column shows the number of residues for which the backbone conformation was analysed, and the total number of residues.

Mol	Chain	Analysed	Favoured	Allowed	Outliers	Percentiles	
1	A	322/345 (93%)	313 (97%)	9 (3%)	0	100	100
1	B	322/345 (93%)	313 (97%)	9 (3%)	0	100	100
1	C	321/345 (93%)	307 (96%)	14 (4%)	0	100	100
1	D	322/345 (93%)	313 (97%)	9 (3%)	0	100	100
All	All	1287/1380 (93%)	1246 (97%)	41 (3%)	0	100	100

There are no Ramachandran outliers to report.

5.3.2 Protein sidechains [i](#)

In the following table, the Percentiles column shows the percent sidechain outliers of the chain as a percentile score with respect to all X-ray entries followed by that with respect to entries of similar resolution.

The Analysed column shows the number of residues for which the sidechain conformation was analysed, and the total number of residues.

Mol	Chain	Analysed	Rotameric	Outliers	Percentiles	
1	A	254/273 (93%)	241 (95%)	13 (5%)	24	46

Continued on next page...

Continued from previous page...

Mol	Chain	Analysed	Rotameric	Outliers	Percentiles
1	B	254/273 (93%)	248 (98%)	6 (2%)	49 74
1	C	253/273 (93%)	239 (94%)	14 (6%)	21 43
1	D	254/273 (93%)	243 (96%)	11 (4%)	29 54
All	All	1015/1092 (93%)	971 (96%)	44 (4%)	29 54

All (44) residues with a non-rotameric sidechain are listed below:

Mol	Chain	Res	Type
1	A	5	LEU
1	A	9	GLN
1	A	10	ASP
1	A	42	LYS
1	A	55	ARG
1	A	71	THR
1	A	93	ASN
1	A	173	GLN
1	A	219	VAL
1	A	274	ARG
1	A	292	THR
1	A	308	GLU
1	A	315	ILE
1	B	27	GLU
1	B	42	LYS
1	B	93	ASN
1	B	114	GLN
1	B	173	GLN
1	B	324	ASN
1	C	5	LEU
1	C	9	GLN
1	C	29	ASP
1	C	42	LYS
1	C	50	LYS
1	C	55	ARG
1	C	71	THR
1	C	73	GLU
1	C	93	ASN
1	C	114	GLN
1	C	116	LEU
1	C	173	GLN
1	C	280	GLN
1	C	292	THR

Continued on next page...

Continued from previous page...

Mol	Chain	Res	Type
1	D	10	ASP
1	D	21	ASP
1	D	42	LYS
1	D	70	ARG
1	D	73	GLU
1	D	93	ASN
1	D	194	ARG
1	D	203	GLU
1	D	253	MET
1	D	315	ILE
1	D	324	ASN

Some sidechains can be flipped to improve hydrogen bonding and reduce clashes. All (18) such sidechains are listed below:

Mol	Chain	Res	Type
1	A	93	ASN
1	B	9	GLN
1	B	18	GLN
1	B	93	ASN
1	B	293	GLN
1	B	313	ASN
1	B	314	GLN
1	C	9	GLN
1	C	93	ASN
1	C	101	GLN
1	C	280	GLN
1	C	293	GLN
1	D	9	GLN
1	D	93	ASN
1	D	173	GLN
1	D	293	GLN
1	D	314	GLN
1	D	324	ASN

5.3.3 RNA ⓘ

There are no RNA molecules in this entry.

5.4 Non-standard residues in protein, DNA, RNA chains ⓘ

There are no non-standard protein/DNA/RNA residues in this entry.

5.5 Carbohydrates ⓘ

There are no carbohydrates in this entry.

5.6 Ligand geometry ⓘ

4 ligands are modelled in this entry.

In the following table, the Counts columns list the number of bonds (or angles) for which Mogul statistics could be retrieved, the number of bonds (or angles) that are observed in the model and the number of bonds (or angles) that are defined in the Chemical Component Dictionary. The Link column lists molecule types, if any, to which the group is linked. The Z score for a bond length (or angle) is the number of standard deviations the observed value is removed from the expected value. A bond length (or angle) with $|Z| > 2$ is considered an outlier worth inspection. RMSZ is the root-mean-square of all Z scores of the bond lengths (or angles).

Mol	Type	Chain	Res	Link	Bond lengths			Bond angles		
					Counts	RMSZ	# $ Z > 2$	Counts	RMSZ	# $ Z > 2$
2	NDP	B	1325	-	45,52,52	1.70	5 (11%)	53,80,80	1.32	5 (9%)
2	NDP	A	1325	-	45,52,52	1.65	5 (11%)	53,80,80	1.23	6 (11%)
2	NDP	D	1325	-	45,52,52	1.80	7 (15%)	53,80,80	1.36	5 (9%)
2	NDP	C	1325	-	45,52,52	1.68	5 (11%)	53,80,80	1.38	5 (9%)

In the following table, the Chirals column lists the number of chiral outliers, the number of chiral centers analysed, the number of these observed in the model and the number defined in the Chemical Component Dictionary. Similar counts are reported in the Torsion and Rings columns. '-' means no outliers of that kind were identified.

Mol	Type	Chain	Res	Link	Chirals	Torsions	Rings
2	NDP	B	1325	-	-	4/30/77/77	0/5/5/5
2	NDP	A	1325	-	-	3/30/77/77	0/5/5/5
2	NDP	D	1325	-	-	3/30/77/77	0/5/5/5
2	NDP	C	1325	-	-	4/30/77/77	0/5/5/5

All (22) bond length outliers are listed below:

Mol	Chain	Res	Type	Atoms	Z	Observed(Å)	Ideal(Å)
2	D	1325	NDP	O7N-C7N	6.68	1.40	1.24

Continued on next page...

Continued from previous page...

Mol	Chain	Res	Type	Atoms	Z	Observed(Å)	Ideal(Å)
2	B	1325	NDP	O7N-C7N	6.66	1.40	1.24
2	C	1325	NDP	O7N-C7N	6.65	1.40	1.24
2	A	1325	NDP	O7N-C7N	6.60	1.40	1.24
2	D	1325	NDP	C4N-C3N	-5.82	1.38	1.49
2	C	1325	NDP	C4N-C3N	-5.41	1.39	1.49
2	A	1325	NDP	C4N-C3N	-5.41	1.39	1.49
2	B	1325	NDP	C4N-C3N	-5.35	1.39	1.49
2	B	1325	NDP	C2A-N3A	4.11	1.38	1.32
2	C	1325	NDP	C2A-N3A	3.76	1.38	1.32
2	D	1325	NDP	C6N-C5N	3.68	1.39	1.33
2	A	1325	NDP	C2A-N3A	3.60	1.37	1.32
2	D	1325	NDP	C2A-N3A	3.55	1.37	1.32
2	B	1325	NDP	C2A-N1A	3.12	1.39	1.33
2	C	1325	NDP	C2A-N1A	2.77	1.39	1.33
2	A	1325	NDP	C2A-N1A	2.61	1.38	1.33
2	D	1325	NDP	C2A-N1A	2.59	1.38	1.33
2	A	1325	NDP	C6N-C5N	2.56	1.37	1.33
2	B	1325	NDP	C6N-C5N	2.51	1.37	1.33
2	D	1325	NDP	C2N-C3N	2.49	1.41	1.34
2	C	1325	NDP	C6N-C5N	2.38	1.37	1.33
2	D	1325	NDP	O4B-C4B	-2.08	1.40	1.45

All (21) bond angle outliers are listed below:

Mol	Chain	Res	Type	Atoms	Z	Observed(°)	Ideal(°)
2	D	1325	NDP	N3A-C2A-N1A	-5.15	120.62	128.68
2	B	1325	NDP	N3A-C2A-N1A	-4.99	120.88	128.68
2	C	1325	NDP	O4D-C1D-N1N	4.90	117.64	108.06
2	C	1325	NDP	N3A-C2A-N1A	-4.71	121.32	128.68
2	A	1325	NDP	N3A-C2A-N1A	-4.41	121.79	128.68
2	D	1325	NDP	C3N-C7N-N7N	3.76	124.34	117.67
2	A	1325	NDP	O4D-C1D-N1N	3.67	115.22	108.06
2	D	1325	NDP	O7N-C7N-N7N	-3.48	114.74	122.88
2	B	1325	NDP	O4D-C1D-N1N	3.41	114.72	108.06
2	D	1325	NDP	O4D-C1D-N1N	3.31	114.52	108.06
2	D	1325	NDP	PN-O3-PA	-3.14	122.04	132.83
2	C	1325	NDP	C3N-C7N-N7N	2.97	122.95	117.67
2	B	1325	NDP	PN-O3-PA	-2.95	122.70	132.83
2	C	1325	NDP	PN-O3-PA	-2.90	122.87	132.83
2	A	1325	NDP	C3N-C7N-N7N	2.88	122.78	117.67
2	B	1325	NDP	C3N-C7N-N7N	2.84	122.72	117.67
2	A	1325	NDP	C1D-N1N-C2N	-2.80	116.44	121.11

Continued on next page...

Continued from previous page...

Mol	Chain	Res	Type	Atoms	Z	Observed(°)	Ideal(°)
2	B	1325	NDP	C1D-N1N-C2N	-2.75	116.53	121.11
2	A	1325	NDP	PN-O3-PA	-2.52	124.17	132.83
2	C	1325	NDP	C1D-N1N-C2N	-2.46	117.02	121.11
2	A	1325	NDP	O7N-C7N-N7N	-2.03	118.13	122.88

There are no chirality outliers.

All (14) torsion outliers are listed below:

Mol	Chain	Res	Type	Atoms
2	B	1325	NDP	O4D-C1D-N1N-C2N
2	A	1325	NDP	O4D-C1D-N1N-C2N
2	C	1325	NDP	O4D-C1D-N1N-C2N
2	D	1325	NDP	O4D-C1D-N1N-C2N
2	B	1325	NDP	C2B-O2B-P2B-O2X
2	B	1325	NDP	O4B-C4B-C5B-O5B
2	C	1325	NDP	C2B-O2B-P2B-O2X
2	C	1325	NDP	O4B-C4B-C5B-O5B
2	B	1325	NDP	C2N-C3N-C7N-N7N
2	A	1325	NDP	C2N-C3N-C7N-N7N
2	D	1325	NDP	C2N-C3N-C7N-N7N
2	C	1325	NDP	C2N-C3N-C7N-N7N
2	A	1325	NDP	O4B-C4B-C5B-O5B
2	D	1325	NDP	O4B-C4B-C5B-O5B

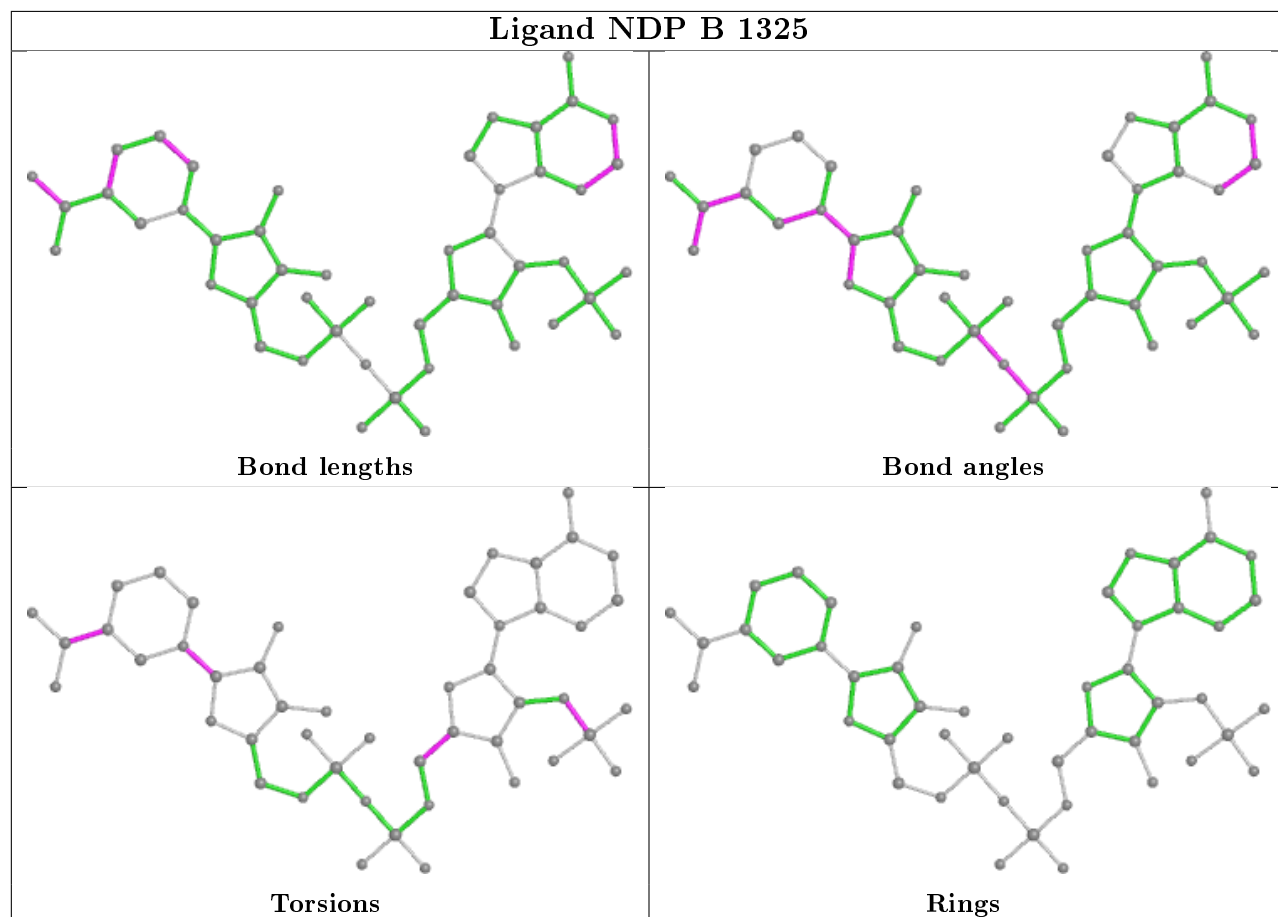
There are no ring outliers.

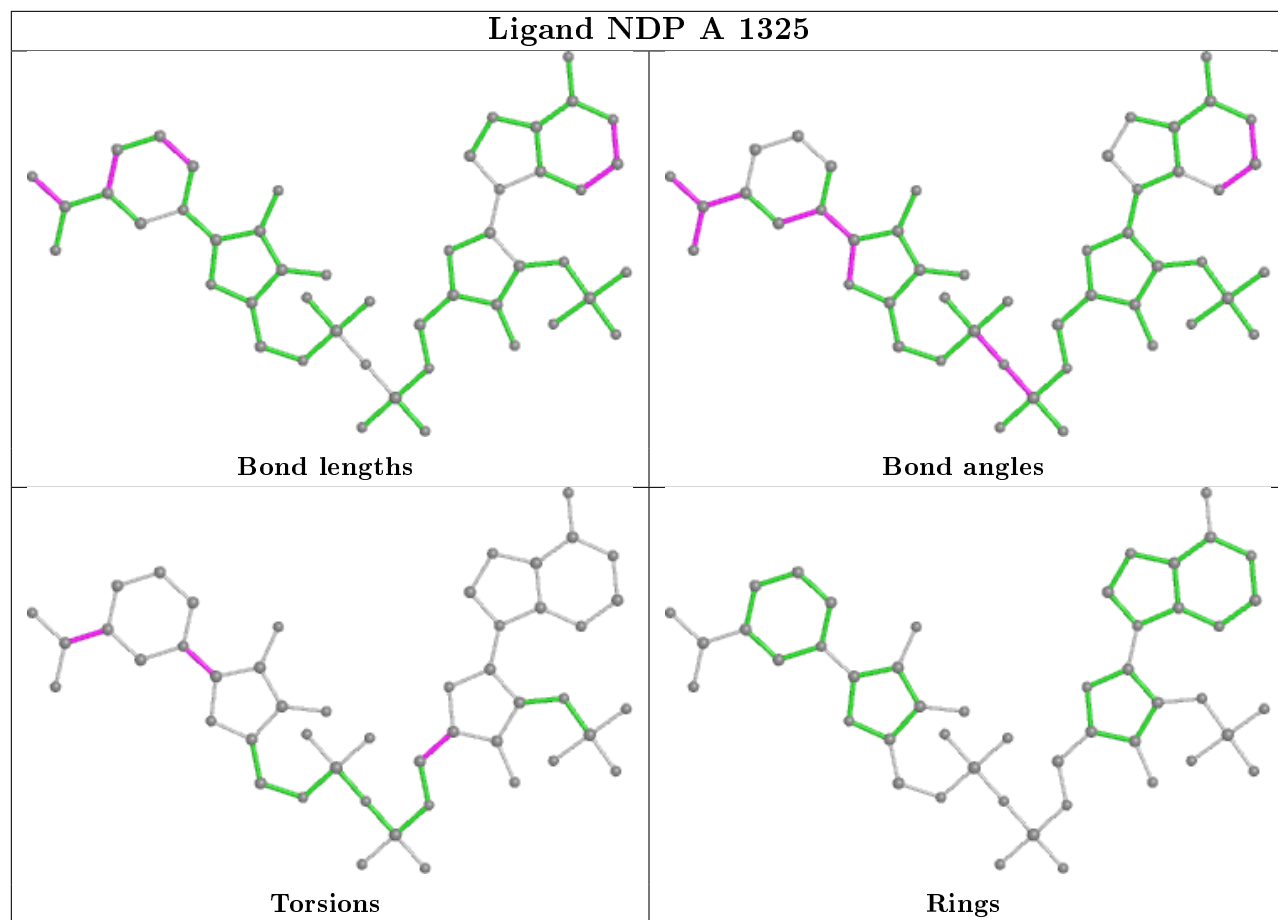
4 monomers are involved in 9 short contacts:

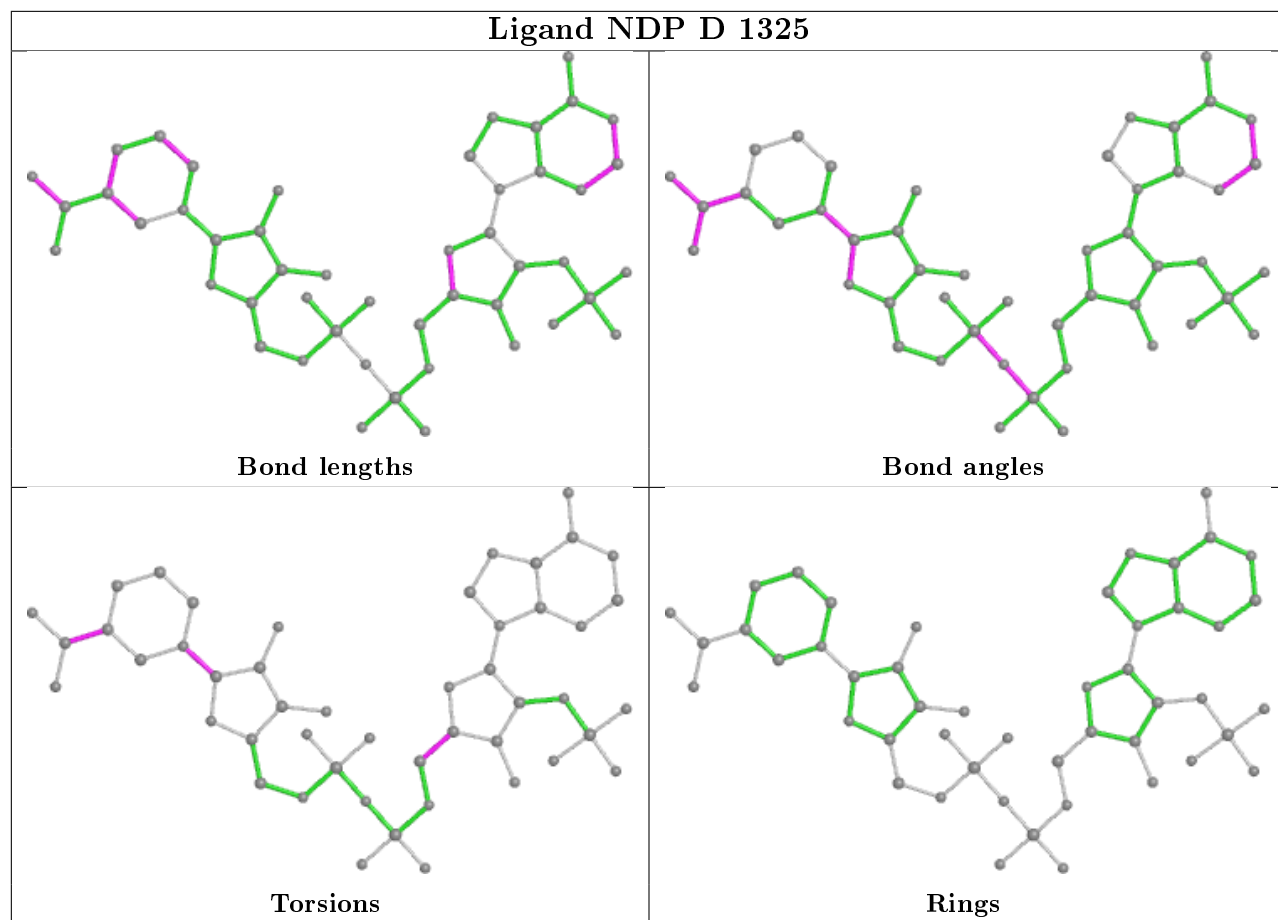
Mol	Chain	Res	Type	Clashes	Symm-Clashes
2	B	1325	NDP	2	0
2	A	1325	NDP	2	0
2	D	1325	NDP	2	0
2	C	1325	NDP	3	0

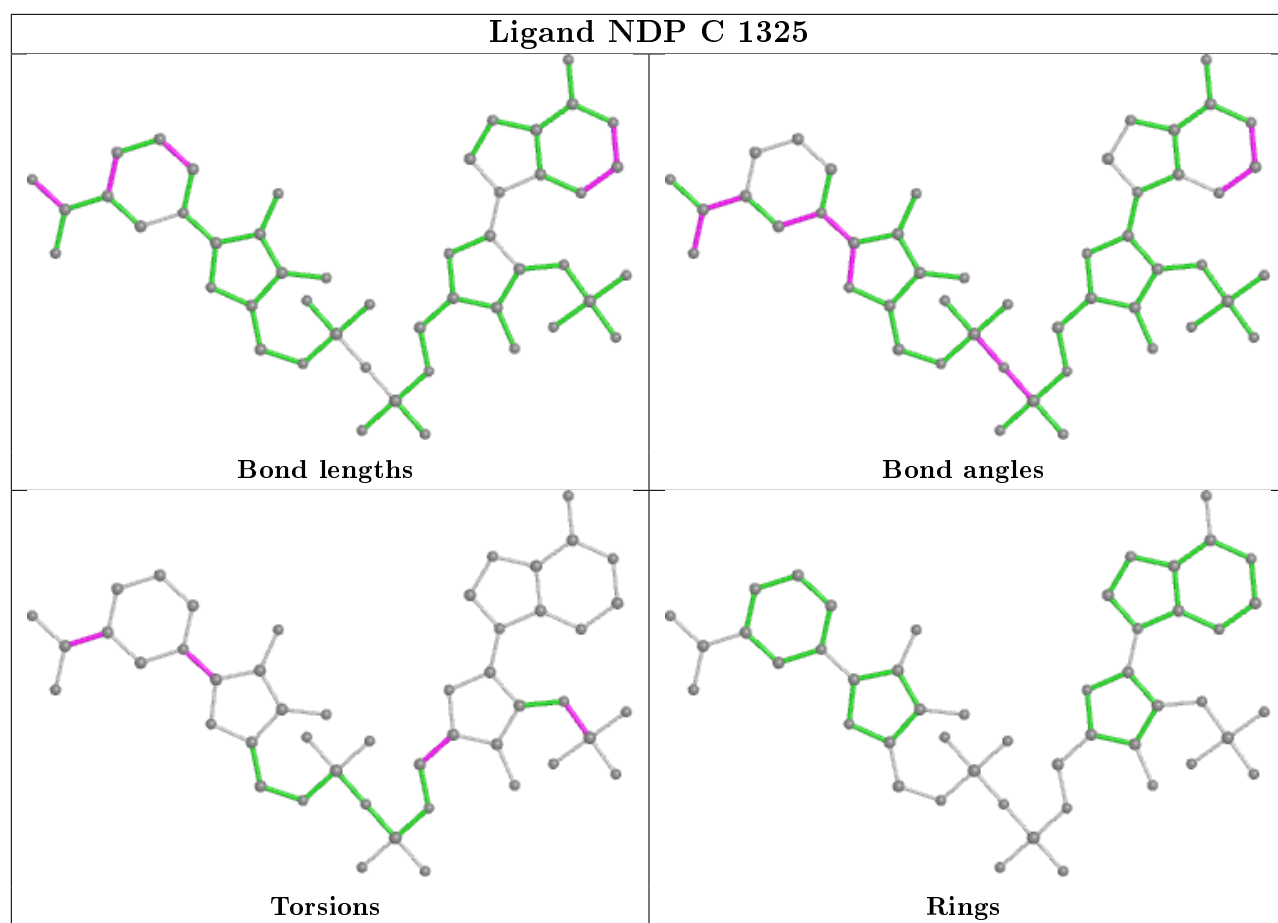
The following is a two-dimensional graphical depiction of Mogul quality analysis of bond lengths, bond angles, torsion angles, and ring geometry for all instances of the Ligand of Interest. In addition, ligands with molecular weight > 250 and outliers as shown on the validation Tables will also be included. For torsion angles, if less than 5% of the Mogul distribution of torsion angles is within 10 degrees of the torsion angle in question, then that torsion angle is considered an outlier. Any bond that is central to one or more torsion angles identified as an outlier by Mogul will be highlighted in the graph. For rings, the root-mean-square deviation (RMSD) between the ring in question and similar rings identified by Mogul is calculated over all ring torsion angles. If the average RMSD is greater than 60 degrees and the minimal RMSD between the ring in question and

any Mogul-identified rings is also greater than 60 degrees, then that ring is considered an outlier. The outliers are highlighted in purple. The color gray indicates Mogul did not find sufficient equivalents in the CSD to analyse the geometry.









5.7 Other polymers [i](#)

There are no such residues in this entry.

5.8 Polymer linkage issues [i](#)

There are no chain breaks in this entry.

6 Fit of model and data ⓘ

6.1 Protein, DNA and RNA chains ⓘ

In the following table, the column labelled ‘#RSRZ> 2’ contains the number (and percentage) of RSRZ outliers, followed by percent RSRZ outliers for the chain as percentile scores relative to all X-ray entries and entries of similar resolution. The OWAB column contains the minimum, median, 95th percentile and maximum values of the occupancy-weighted average B-factor per residue. The column labelled ‘Q< 0.9’ lists the number of (and percentage) of residues with an average occupancy less than 0.9.

Mol	Chain	Analysed	<RSRZ>	#RSRZ>2	OWAB(Å ²)	Q<0.9
1	A	324/345 (93%)	-0.43	3 (0%) 84 82	27, 40, 61, 77	0
1	B	324/345 (93%)	-0.43	3 (0%) 84 82	31, 45, 64, 80	0
1	C	323/345 (93%)	-0.16	10 (3%) 49 42	30, 45, 86, 107	0
1	D	324/345 (93%)	-0.31	5 (1%) 73 70	32, 45, 66, 77	0
All	All	1295/1380 (93%)	-0.33	21 (1%) 72 68	27, 44, 69, 107	0

All (21) RSRZ outliers are listed below:

Mol	Chain	Res	Type	RSRZ
1	D	10	ASP	2.9
1	C	78	HIS	2.9
1	C	10	ASP	2.7
1	C	27	GLU	2.7
1	D	181	GLU	2.6
1	C	55	ARG	2.6
1	C	11	GLY	2.6
1	A	324	ASN	2.5
1	C	79	ALA	2.5
1	A	55	ARG	2.5
1	C	71	THR	2.5
1	A	10	ASP	2.5
1	C	324	ASN	2.3
1	B	10	ASP	2.3
1	D	11	GLY	2.2
1	B	11	GLY	2.1
1	C	114	GLN	2.1
1	B	181	GLU	2.1
1	C	73	GLU	2.1
1	D	203	GLU	2.1
1	D	71	THR	2.0

6.2 Non-standard residues in protein, DNA, RNA chains [i](#)

There are no non-standard protein/DNA/RNA residues in this entry.

6.3 Carbohydrates [i](#)

There are no carbohydrates in this entry.

6.4 Ligands [i](#)

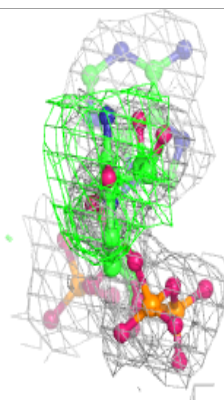
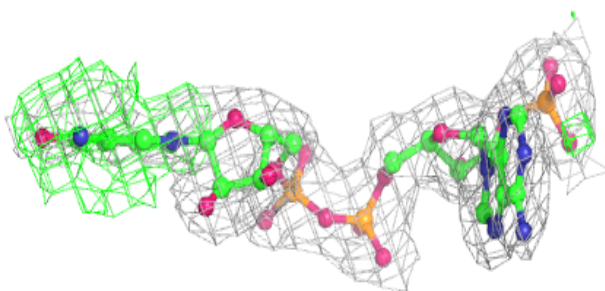
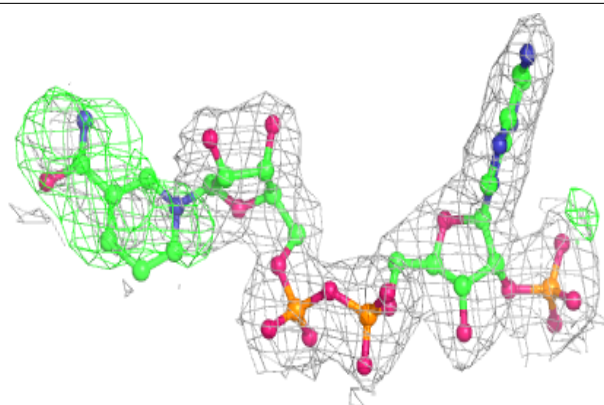
In the following table, the Atoms column lists the number of modelled atoms in the group and the number defined in the chemical component dictionary. The B-factors column lists the minimum, median, 95th percentile and maximum values of B factors of atoms in the group. The column labelled 'Q< 0.9' lists the number of atoms with occupancy less than 0.9.

Mol	Type	Chain	Res	Atoms	RSCC	RSR	B-factors(\AA^2)	Q<0.9
2	NDP	A	1325	48/48	0.92	0.18	31,37,46,47	9
2	NDP	B	1325	48/48	0.94	0.16	38,42,48,49	9
2	NDP	C	1325	48/48	0.94	0.17	34,40,48,49	9
2	NDP	D	1325	48/48	0.95	0.16	37,42,59,65	0

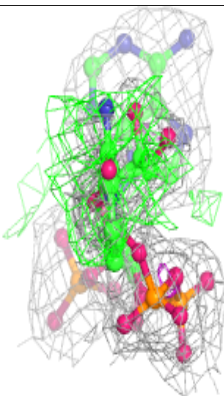
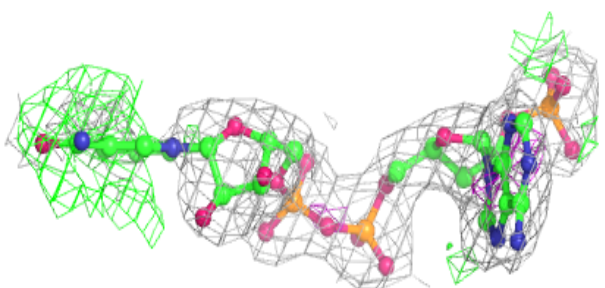
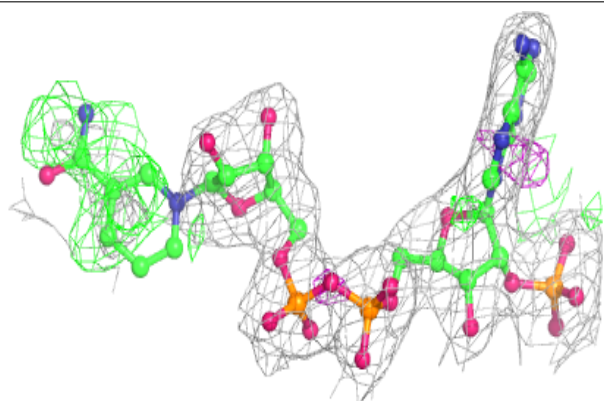
The following is a graphical depiction of the model fit to experimental electron density of all instances of the Ligand of Interest. In addition, ligands with molecular weight > 250 and outliers as shown on the geometry validation Tables will also be included. Each fit is shown from different orientation to approximate a three-dimensional view.

Electron density around NDP A 1325:

$2mF_o-DF_c$ (at 0.7 rmsd) in gray
 mF_o-DF_c (at 3 rmsd) in purple (negative)
and green (positive)

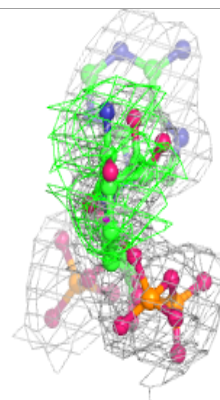
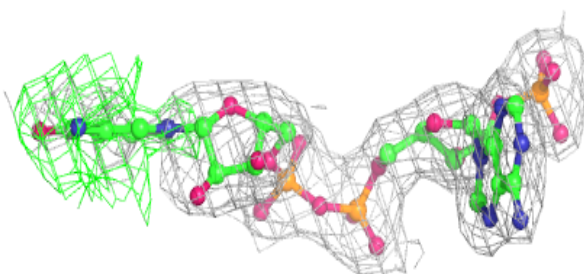
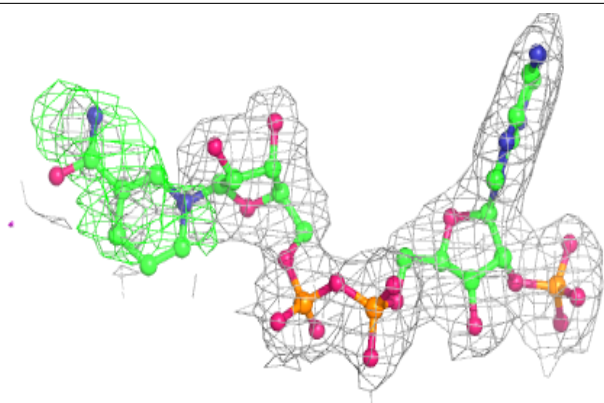
**Electron density around NDP B 1325:**

$2mF_o-DF_c$ (at 0.7 rmsd) in gray
 mF_o-DF_c (at 3 rmsd) in purple (negative)
and green (positive)

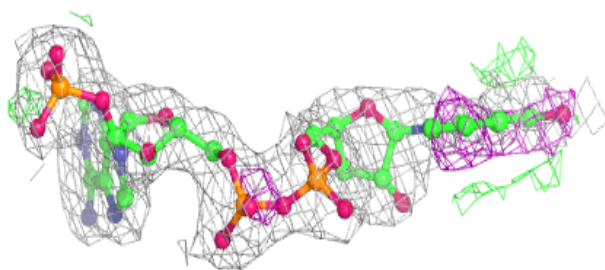
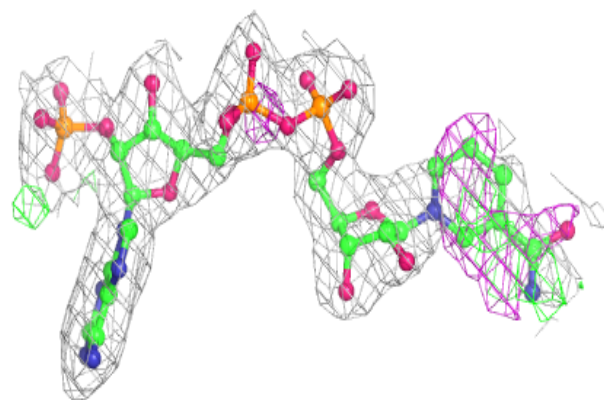


Electron density around NDP C 1325:

$2mF_o-DF_c$ (at 0.7 rmsd) in gray
 mF_o-DF_c (at 3 rmsd) in purple (negative)
and green (positive)

**Electron density around NDP D 1325:**

$2mF_o-DF_c$ (at 0.7 rmsd) in gray
 mF_o-DF_c (at 3 rmsd) in purple (negative)
and green (positive)



6.5 Other polymers

There are no such residues in this entry.