



wwPDB X-ray Structure Validation Summary Report ⓘ

Aug 20, 2020 – 05:45 PM BST

PDB ID : 5O8F
Title : Structure of a chimaeric beta3-alpha5 GABAA receptor in complex with nanobody Nb25 and pregnanolone
Authors : Miller, P.S.; Scott, S.; Masiulis, S.; De Colibus, L.; Pardon, E.; Steyaert, J.; Aricescu, A.R.
Deposited on : 2017-06-13
Resolution : 3.20 Å(reported)

This is a wwPDB X-ray Structure Validation Summary Report for a publicly released PDB entry.

We welcome your comments at validation@mail.wwpdb.org

A user guide is available at

<https://www.wwpdb.org/validation/2017/XrayValidationReportHelp>

with specific help available everywhere you see the ⓘ symbol.

The following versions of software and data (see [references ⓘ](#)) were used in the production of this report:

MolProbity : 4.02b-467
Mogul : 1.8.5 (274361), CSD as541be (2020)
Xtriage (Phenix) : 1.13
EDS : 2.13.1
Percentile statistics : 20191225.v01 (using entries in the PDB archive December 25th 2019)
Refmac : 5.8.0158
CCP4 : 7.0.044 (Gargrove)
Ideal geometry (proteins) : Engh & Huber (2001)
Ideal geometry (DNA, RNA) : Parkinson et al. (1996)
Validation Pipeline (wwPDB-VP) : 2.13.1

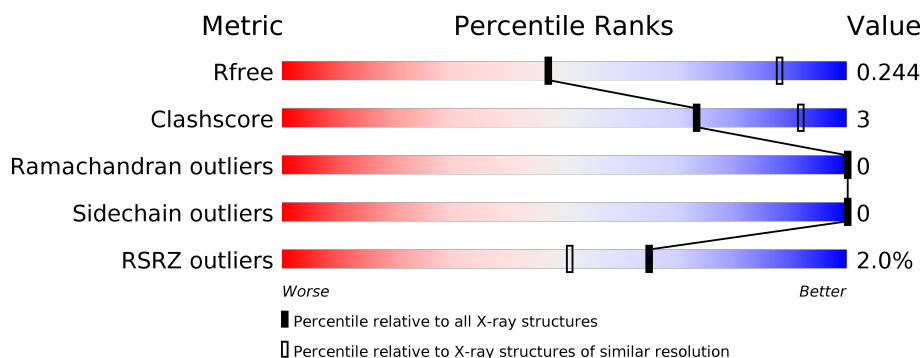
1 Overall quality at a glance

The following experimental techniques were used to determine the structure:

X-RAY DIFFRACTION

The reported resolution of this entry is 3.20 Å.

Percentile scores (ranging between 0-100) for global validation metrics of the entry are shown in the following graphic. The table shows the number of entries on which the scores are based.



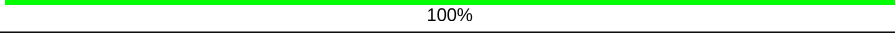
Metric	Whole archive (#Entries)	Similar resolution (#Entries, resolution range(Å))
R_{free}	130704	1133 (3.20-3.20)
Clashscore	141614	1253 (3.20-3.20)
Ramachandran outliers	138981	1234 (3.20-3.20)
Sidechain outliers	138945	1233 (3.20-3.20)
RSRZ outliers	127900	1095 (3.20-3.20)

The table below summarises the geometric issues observed across the polymeric chains and their fit to the electron density. The red, orange, yellow and green segments on the lower bar indicate the fraction of residues that contain outliers for ≥ 3 , 2, 1 and 0 types of geometric quality criteria respectively. A grey segment represents the fraction of residues that are not modelled. The numeric value for each fraction is indicated below the corresponding segment, with a dot representing fractions $\leq 5\%$. The upper red bar (where present) indicates the fraction of residues that have poor fit to the electron density. The numeric value is given above the bar.

Mol	Chain	Length	Quality of chain
1	A	367	<div> <div>2%</div> <div> <div></div> <div>85%</div> <div>5%</div> <div>10%</div> </div> </div>
1	B	367	<div> <div>2%</div> <div> <div></div> <div>85%</div> <div>6%</div> <div>10%</div> </div> </div>
1	C	367	<div> <div>2%</div> <div> <div></div> <div>85%</div> <div>6%</div> <div>10%</div> </div> </div>
1	D	367	<div> <div>3%</div> <div> <div></div> <div>86%</div> <div>5%</div> <div>10%</div> </div> </div>
1	E	367	<div> <div>2%</div> <div> <div></div> <div>86%</div> <div>5%</div> <div>10%</div> </div> </div>
2	K	125	<div> <div>2%</div> <div> <div></div> <div>91%</div> <div>9%</div> </div> </div>

Continued on next page...

Continued from previous page...

Mol	Chain	Length	Quality of chain
2	O	125	
3	L	124	
3	M	124	
3	N	124	
4	F	7	
4	G	7	
4	H	7	
4	I	7	
4	J	7	

2 Entry composition

There are 6 unique types of molecules in this entry. The entry contains 18817 atoms, of which 0 are hydrogens and 0 are deuteriums.

In the tables below, the ZeroOcc column contains the number of atoms modelled with zero occupancy, the AltConf column contains the number of residues with at least one atom in alternate conformation and the Trace column contains the number of residues modelled with at most 2 atoms.

- Molecule 1 is a protein called Gamma-aminobutyric acid receptor subunit beta-3, Gamma-aminobutyric acid receptor subunit alpha-5, Gamma-aminobutyric acid receptor subunit alpha-5.

Mol	Chain	Residues	Atoms					ZeroOcc	AltConf	Trace
1	A	332	Total	C	N	O	S	0	0	0
			2684	1744	444	479	17			
1	B	332	Total	C	N	O	S	0	0	0
			2684	1744	444	479	17			
1	C	332	Total	C	N	O	S	0	0	0
			2684	1744	444	479	17			
1	D	332	Total	C	N	O	S	0	0	0
			2684	1744	444	479	17			
1	E	332	Total	C	N	O	S	0	0	0
			2684	1744	444	479	17			

There are 110 discrepancies between the modelled and reference sequences:

Chain	Residue	Modelled	Actual	Comment	Reference
A	-2	GLU	-	expression tag	UNP P28472
A	-1	THR	-	expression tag	UNP P28472
A	0	GLY	-	expression tag	UNP P28472
A	316	SER	-	linker	UNP P31644
A	317	GLN	-	linker	UNP P31644
A	318	PRO	-	linker	UNP P31644
A	319	ALA	-	linker	UNP P31644
A	320	ARG	-	linker	UNP P31644
A	321	ALA	-	linker	UNP P31644
A	322	ALA	-	linker	UNP P31644
A	404	ILE	VAL	conflict	UNP P31644
A	432	GLY	-	expression tag	UNP P31644
A	433	THR	-	expression tag	UNP P31644
A	434	THR	-	expression tag	UNP P31644
A	435	GLU	-	expression tag	UNP P31644
A	436	THR	-	expression tag	UNP P31644
A	437	SER	-	expression tag	UNP P31644

Continued on next page...

Continued from previous page...

Chain	Residue	Modelled	Actual	Comment	Reference
A	438	GLN	-	expression tag	UNP P31644
A	439	VAL	-	expression tag	UNP P31644
A	440	ALA	-	expression tag	UNP P31644
A	441	PRO	-	expression tag	UNP P31644
A	442	ALA	-	expression tag	UNP P31644
B	-2	GLU	-	expression tag	UNP P28472
B	-1	THR	-	expression tag	UNP P28472
B	0	GLY	-	expression tag	UNP P28472
B	316	SER	-	linker	UNP P31644
B	317	GLN	-	linker	UNP P31644
B	318	PRO	-	linker	UNP P31644
B	319	ALA	-	linker	UNP P31644
B	320	ARG	-	linker	UNP P31644
B	321	ALA	-	linker	UNP P31644
B	322	ALA	-	linker	UNP P31644
B	404	ILE	VAL	conflict	UNP P31644
B	432	GLY	-	expression tag	UNP P31644
B	433	THR	-	expression tag	UNP P31644
B	434	THR	-	expression tag	UNP P31644
B	435	GLU	-	expression tag	UNP P31644
B	436	THR	-	expression tag	UNP P31644
B	437	SER	-	expression tag	UNP P31644
B	438	GLN	-	expression tag	UNP P31644
B	439	VAL	-	expression tag	UNP P31644
B	440	ALA	-	expression tag	UNP P31644
B	441	PRO	-	expression tag	UNP P31644
B	442	ALA	-	expression tag	UNP P31644
C	-2	GLU	-	expression tag	UNP P28472
C	-1	THR	-	expression tag	UNP P28472
C	0	GLY	-	expression tag	UNP P28472
C	316	SER	-	linker	UNP P31644
C	317	GLN	-	linker	UNP P31644
C	318	PRO	-	linker	UNP P31644
C	319	ALA	-	linker	UNP P31644
C	320	ARG	-	linker	UNP P31644
C	321	ALA	-	linker	UNP P31644
C	322	ALA	-	linker	UNP P31644
C	404	ILE	VAL	conflict	UNP P31644
C	432	GLY	-	expression tag	UNP P31644
C	433	THR	-	expression tag	UNP P31644
C	434	THR	-	expression tag	UNP P31644
C	435	GLU	-	expression tag	UNP P31644

Continued on next page...

Continued from previous page...

Chain	Residue	Modelled	Actual	Comment	Reference
C	436	THR	-	expression tag	UNP P31644
C	437	SER	-	expression tag	UNP P31644
C	438	GLN	-	expression tag	UNP P31644
C	439	VAL	-	expression tag	UNP P31644
C	440	ALA	-	expression tag	UNP P31644
C	441	PRO	-	expression tag	UNP P31644
C	442	ALA	-	expression tag	UNP P31644
D	-2	GLU	-	expression tag	UNP P28472
D	-1	THR	-	expression tag	UNP P28472
D	0	GLY	-	expression tag	UNP P28472
D	316	SER	-	linker	UNP P31644
D	317	GLN	-	linker	UNP P31644
D	318	PRO	-	linker	UNP P31644
D	319	ALA	-	linker	UNP P31644
D	320	ARG	-	linker	UNP P31644
D	321	ALA	-	linker	UNP P31644
D	322	ALA	-	linker	UNP P31644
D	404	ILE	VAL	conflict	UNP P31644
D	432	GLY	-	expression tag	UNP P31644
D	433	THR	-	expression tag	UNP P31644
D	434	THR	-	expression tag	UNP P31644
D	435	GLU	-	expression tag	UNP P31644
D	436	THR	-	expression tag	UNP P31644
D	437	SER	-	expression tag	UNP P31644
D	438	GLN	-	expression tag	UNP P31644
D	439	VAL	-	expression tag	UNP P31644
D	440	ALA	-	expression tag	UNP P31644
D	441	PRO	-	expression tag	UNP P31644
D	442	ALA	-	expression tag	UNP P31644
E	-2	GLU	-	expression tag	UNP P28472
E	-1	THR	-	expression tag	UNP P28472
E	0	GLY	-	expression tag	UNP P28472
E	316	SER	-	linker	UNP P31644
E	317	GLN	-	linker	UNP P31644
E	318	PRO	-	linker	UNP P31644
E	319	ALA	-	linker	UNP P31644
E	320	ARG	-	linker	UNP P31644
E	321	ALA	-	linker	UNP P31644
E	322	ALA	-	linker	UNP P31644
E	404	ILE	VAL	conflict	UNP P31644
E	432	GLY	-	expression tag	UNP P31644
E	433	THR	-	expression tag	UNP P31644

Continued on next page...

Continued from previous page...

Chain	Residue	Modelled	Actual	Comment	Reference
E	434	THR	-	expression tag	UNP P31644
E	435	GLU	-	expression tag	UNP P31644
E	436	THR	-	expression tag	UNP P31644
E	437	SER	-	expression tag	UNP P31644
E	438	GLN	-	expression tag	UNP P31644
E	439	VAL	-	expression tag	UNP P31644
E	440	ALA	-	expression tag	UNP P31644
E	441	PRO	-	expression tag	UNP P31644
E	442	ALA	-	expression tag	UNP P31644

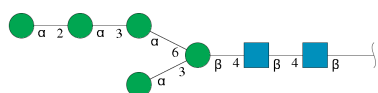
- Molecule 2 is a protein called Nanobody Nb25.

Mol	Chain	Residues	Atoms					ZeroOcc	AltConf	Trace
2	K	125	Total	C	N	O	S	0	0	0
			963	604	166	189	4			
2	O	125	Total	C	N	O	S	0	0	0
			963	604	166	189	4			

- Molecule 3 is a protein called Nanobody Nb25.

Mol	Chain	Residues	Atoms					ZeroOcc	AltConf	Trace
3	L	124	Total	C	N	O	S	0	0	0
			957	601	165	187	4			
3	M	124	Total	C	N	O	S	0	0	0
			957	601	165	187	4			
3	N	124	Total	C	N	O	S	0	0	0
			957	601	165	187	4			

- Molecule 4 is an oligosaccharide called alpha-D-mannopyranose-(1-2)-alpha-D-mannopyranose-(1-3)-alpha-D-mannopyranose-(1-6)-[alpha-D-mannopyranose-(1-3)]beta-D-mannopyranose-(1-4)-2-acetamido-2-deoxy-beta-D-glucopyranose-(1-4)-2-acetamido-2-deoxy-beta-D-glucopyranose.



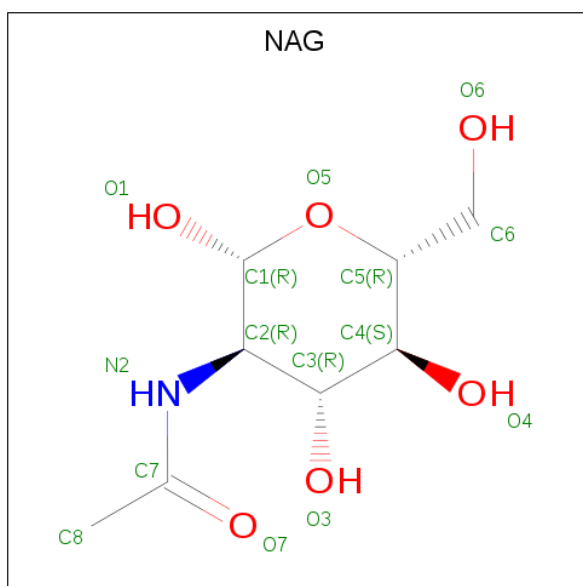
Mol	Chain	Residues	Atoms				ZeroOcc	AltConf	Trace
4	F	7	Total	C	N	O	0	0	0
			83	46	2	35			
4	G	7	Total	C	N	O	0	0	0
			83	46	2	35			

Continued on next page...

Continued from previous page...

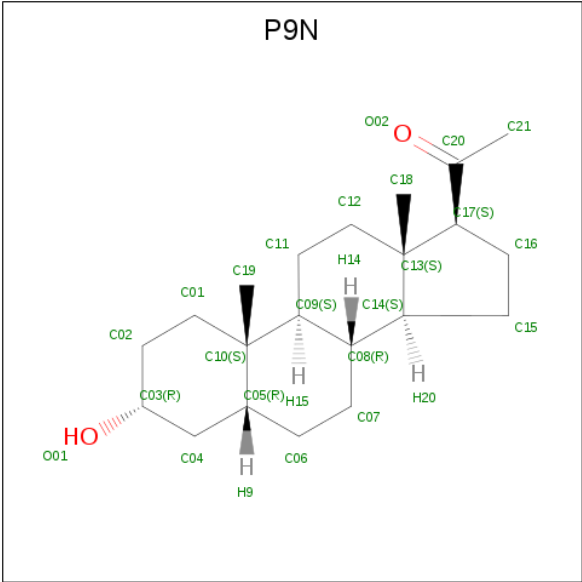
Mol	Chain	Residues	Atoms				ZeroOcc	AltConf	Trace
4	H	7	Total	C	N	O	0	0	0
			83	46	2	35			
4	I	7	Total	C	N	O	0	0	0
			83	46	2	35			
4	J	7	Total	C	N	O	0	0	0
			83	46	2	35			

- Molecule 5 is 2-acetamido-2-deoxy-beta-D-glucopyranose (three-letter code: NAG) (formula: $C_8H_{15}NO_6$).

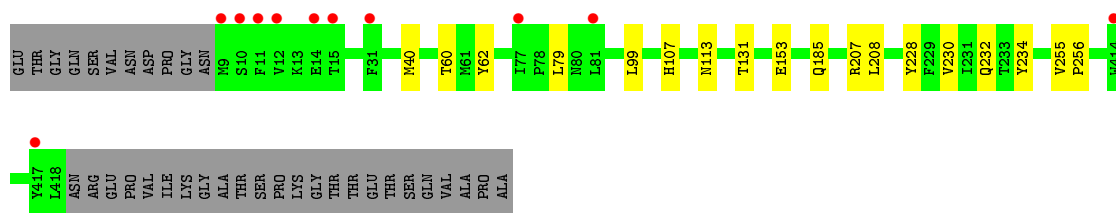


Mol	Chain	Residues	Atoms				ZeroOcc	AltConf
5	A	1	Total	C	N	O	0	0
			14	8	1	5		
5	B	1	Total	C	N	O	0	0
			14	8	1	5		
5	C	1	Total	C	N	O	0	0
			14	8	1	5		
5	D	1	Total	C	N	O	0	0
			14	8	1	5		
5	E	1	Total	C	N	O	0	0
			14	8	1	5		

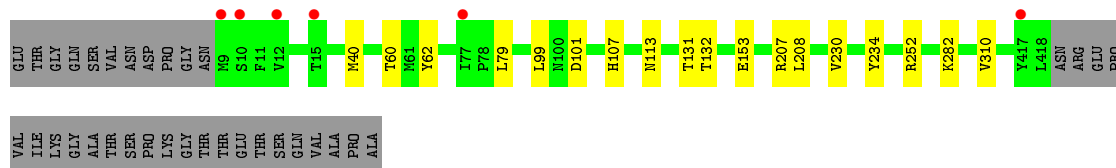
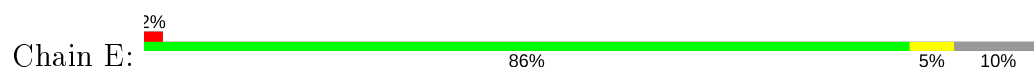
- Molecule 6 is Pregnanolone (three-letter code: P9N) (formula: $C_{21}H_{34}O_2$).



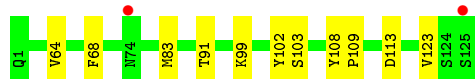
Mol	Chain	Residues	Atoms			ZeroOcc	AltConf
6	B	1	Total	C	O	0	0
			23	21	2		
6	C	1	Total	C	O	0	0
			23	21	2		
6	D	1	Total	C	O	0	0
			23	21	2		
6	E	1	Total	C	O	0	0
			23	21	2		
6	E	1	Total	C	O	0	0
			23	21	2		



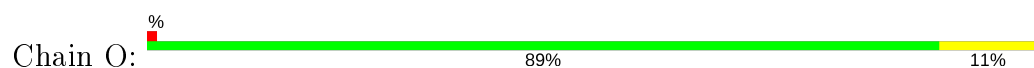
- Molecule 1: Gamma-aminobutyric acid receptor subunit beta-3, Gamma-aminobutyric acid receptor subunit alpha-5, Gamma-aminobutyric acid receptor subunit alpha-5



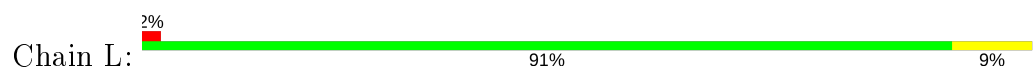
- Molecule 2: Nanobody Nb25



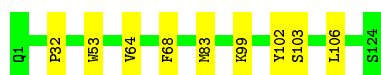
- Molecule 2: Nanobody Nb25



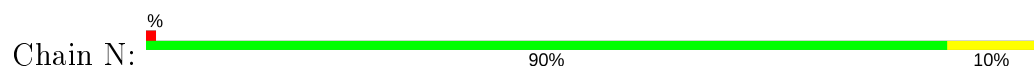
- Molecule 3: Nanobody Nb25



- Molecule 3: Nanobody Nb25



- Molecule 3: Nanobody Nb25





- Molecule 4: alpha-D-mannopyranose-(1-2)-alpha-D-mannopyranose-(1-3)-alpha-D-mannopyranose-(1-6)-[alpha-D-mannopyranose-(1-3)]beta-D-mannopyranose-(1-4)-2-acetamido-2-deoxy-beta-D-glucopyranose-(1-4)-2-acetamido-2-deoxy-beta-D-glucopyranose

Chain F:

100%



- Molecule 4: alpha-D-mannopyranose-(1-2)-alpha-D-mannopyranose-(1-3)-alpha-D-mannopyranose-(1-6)-[alpha-D-mannopyranose-(1-3)]beta-D-mannopyranose-(1-4)-2-acetamido-2-deoxy-beta-D-glucopyranose-(1-4)-2-acetamido-2-deoxy-beta-D-glucopyranose

Chain G:

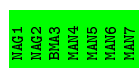
100%



- Molecule 4: alpha-D-mannopyranose-(1-2)-alpha-D-mannopyranose-(1-3)-alpha-D-mannopyranose-(1-6)-[alpha-D-mannopyranose-(1-3)]beta-D-mannopyranose-(1-4)-2-acetamido-2-deoxy-beta-D-glucopyranose-(1-4)-2-acetamido-2-deoxy-beta-D-glucopyranose

Chain H:

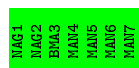
100%



- Molecule 4: alpha-D-mannopyranose-(1-2)-alpha-D-mannopyranose-(1-3)-alpha-D-mannopyranose-(1-6)-[alpha-D-mannopyranose-(1-3)]beta-D-mannopyranose-(1-4)-2-acetamido-2-deoxy-beta-D-glucopyranose-(1-4)-2-acetamido-2-deoxy-beta-D-glucopyranose

Chain I:

100%



- Molecule 4: alpha-D-mannopyranose-(1-2)-alpha-D-mannopyranose-(1-3)-alpha-D-mannopyranose-(1-6)-[alpha-D-mannopyranose-(1-3)]beta-D-mannopyranose-(1-4)-2-acetamido-2-deoxy-beta-D-glucopyranose-(1-4)-2-acetamido-2-deoxy-beta-D-glucopyranose

Chain J:

100%



4 Data and refinement statistics

Property	Value	Source
Space group	I 2 3	Depositor
Cell constants a, b, c, α , β , γ	290.10 Å 290.10 Å 290.10 Å 90.00° 90.00° 90.00°	Depositor
Resolution (Å)	205.13 – 3.20 49.75 – 3.20	Depositor EDS
% Data completeness (in resolution range)	100.0 (205.13-3.20) 100.0 (49.75-3.20)	Depositor EDS
R_{merge}	0.62	Depositor
R_{sym}	(Not available)	Depositor
$\langle I/\sigma(I) \rangle$ ¹	1.40 (at 3.19 Å)	Xtriage
Refinement program	REFMAC 5.8.0158	Depositor
R, R_{free}	0.232 , 0.242 0.234 , 0.244	Depositor DCC
R_{free} test set	3304 reflections (4.94%)	wwPDB-VP
Wilson B-factor (Å ²)	67.1	Xtriage
Anisotropy	0.000	Xtriage
Bulk solvent k_{sol} (e/Å ³), B_{sol} (Å ²)	0.29 , 15.2	EDS
L-test for twinning ²	$\langle L \rangle = 0.45$, $\langle L^2 \rangle = 0.27$	Xtriage
Estimated twinning fraction	0.038 for -l,-k,-h	Xtriage
F_o, F_c correlation	0.90	EDS
Total number of atoms	18817	wwPDB-VP
Average B, all atoms (Å ²)	72.0	wwPDB-VP

Xtriage's analysis on translational NCS is as follows: *The largest off-origin peak in the Patterson function is 1.82% of the height of the origin peak. No significant pseudotranslation is detected.*

¹Intensities estimated from amplitudes.

²Theoretical values of $\langle |L| \rangle$, $\langle L^2 \rangle$ for acentric reflections are 0.5, 0.333 respectively for untwinned datasets, and 0.375, 0.2 for perfectly twinned datasets.

5 Model quality [i](#)

5.1 Standard geometry [i](#)

Bond lengths and bond angles in the following residue types are not validated in this section: BMA, NAG, P9N, MAN

The Z score for a bond length (or angle) is the number of standard deviations the observed value is removed from the expected value. A bond length (or angle) with $|Z| > 5$ is considered an outlier worth inspection. RMSZ is the root-mean-square of all Z scores of the bond lengths (or angles).

Mol	Chain	Bond lengths		Bond angles	
		RMSZ	# $ Z > 5$	RMSZ	# $ Z > 5$
1	A	0.42	0/2751	0.61	0/3742
1	B	0.42	0/2751	0.60	0/3742
1	C	0.42	0/2751	0.61	0/3742
1	D	0.42	0/2751	0.61	0/3742
1	E	0.42	0/2751	0.60	0/3742
2	K	0.41	0/987	0.60	0/1337
2	O	0.41	0/987	0.61	0/1337
3	L	0.43	0/981	0.60	0/1329
3	M	0.41	0/981	0.62	0/1329
3	N	0.41	0/981	0.62	0/1329
All	All	0.42	0/18672	0.61	0/25371

There are no bond length outliers.

There are no bond angle outliers.

There are no chirality outliers.

There are no planarity outliers.

5.2 Too-close contacts [i](#)

In the following table, the Non-H and H(model) columns list the number of non-hydrogen atoms and hydrogen atoms in the chain respectively. The H(added) column lists the number of hydrogen atoms added and optimized by MolProbity. The Clashes column lists the number of clashes within the asymmetric unit, whereas Symm-Clashes lists symmetry related clashes.

Mol	Chain	Non-H	H(model)	H(added)	Clashes	Symm-Clashes
1	A	2684	0	2692	17	0
1	B	2684	0	2692	19	0
1	C	2684	0	2692	19	0

Continued on next page...

Continued from previous page...

Mol	Chain	Non-H	H(model)	H(added)	Clashes	Symm-Clashes
1	D	2684	0	2692	15	0
1	E	2684	0	2692	16	0
2	K	963	0	905	15	0
2	O	963	0	905	11	0
3	L	957	0	900	11	0
3	M	957	0	900	9	0
3	N	957	0	900	11	0
4	F	83	0	70	0	0
4	G	83	0	70	0	0
4	H	83	0	70	0	0
4	I	83	0	70	0	0
4	J	83	0	70	0	0
5	A	14	0	13	0	0
5	B	14	0	13	0	0
5	C	14	0	13	0	0
5	D	14	0	13	0	0
5	E	14	0	13	0	0
6	B	23	0	0	0	0
6	C	23	0	0	0	0
6	D	23	0	0	0	0
6	E	46	0	0	0	0
All	All	18817	0	18385	124	0

The all-atom clashscore is defined as the number of clashes found per 1000 atoms (including hydrogen atoms). The all-atom clashscore for this structure is 3.

The worst 5 of 124 close contacts within the same asymmetric unit are listed below, sorted by their clash magnitude.

Atom-1	Atom-2	Interatomic distance (Å)	Clash overlap (Å)
2:K:64:VAL:HG13	2:K:68:PHE:CD1	2.15	0.80
2:K:91:THR:HG22	2:K:123:VAL:H	1.48	0.76
3:M:64:VAL:HG13	3:M:68:PHE:CD1	2.23	0.74
3:N:64:VAL:HG13	3:N:68:PHE:CD1	2.23	0.73
3:L:64:VAL:HG13	3:L:68:PHE:CD1	2.25	0.71

There are no symmetry-related clashes.

5.3 Torsion angles

5.3.1 Protein backbone

In the following table, the Percentiles column shows the percent Ramachandran outliers of the chain as a percentile score with respect to all X-ray entries followed by that with respect to entries of similar resolution.

The Analysed column shows the number of residues for which the backbone conformation was analysed, and the total number of residues.

Mol	Chain	Analysed	Favoured	Allowed	Outliers	Percentiles	
1	A	330/367 (90%)	324 (98%)	6 (2%)	0	100	100
1	B	330/367 (90%)	324 (98%)	6 (2%)	0	100	100
1	C	330/367 (90%)	323 (98%)	7 (2%)	0	100	100
1	D	330/367 (90%)	324 (98%)	6 (2%)	0	100	100
1	E	330/367 (90%)	324 (98%)	6 (2%)	0	100	100
2	K	123/125 (98%)	120 (98%)	3 (2%)	0	100	100
2	O	123/125 (98%)	119 (97%)	4 (3%)	0	100	100
3	L	122/124 (98%)	118 (97%)	4 (3%)	0	100	100
3	M	122/124 (98%)	119 (98%)	3 (2%)	0	100	100
3	N	122/124 (98%)	119 (98%)	3 (2%)	0	100	100
All	All	2262/2457 (92%)	2214 (98%)	48 (2%)	0	100	100

There are no Ramachandran outliers to report.

5.3.2 Protein sidechains

In the following table, the Percentiles column shows the percent sidechain outliers of the chain as a percentile score with respect to all X-ray entries followed by that with respect to entries of similar resolution.

The Analysed column shows the number of residues for which the sidechain conformation was analysed, and the total number of residues.

Mol	Chain	Analysed	Rotameric	Outliers	Percentiles	
1	A	295/323 (91%)	295 (100%)	0	100	100
1	B	295/323 (91%)	295 (100%)	0	100	100
1	C	295/323 (91%)	295 (100%)	0	100	100
1	D	295/323 (91%)	295 (100%)	0	100	100

Continued on next page...

Continued from previous page...

Mol	Chain	Analysed	Rotameric	Outliers	Percentiles	
1	E	295/323 (91%)	295 (100%)	0	100	100
2	K	99/99 (100%)	99 (100%)	0	100	100
2	O	99/99 (100%)	99 (100%)	0	100	100
3	L	98/98 (100%)	98 (100%)	0	100	100
3	M	98/98 (100%)	98 (100%)	0	100	100
3	N	98/98 (100%)	98 (100%)	0	100	100
All	All	1967/2107 (93%)	1967 (100%)	0	100	100

There are no protein residues with a non-rotameric sidechain to report.

Some sidechains can be flipped to improve hydrogen bonding and reduce clashes. There are no such sidechains identified.

5.3.3 RNA ⓘ

There are no RNA molecules in this entry.

5.4 Non-standard residues in protein, DNA, RNA chains ⓘ

There are no non-standard protein/DNA/RNA residues in this entry.

5.5 Carbohydrates ⓘ

35 monosaccharides are modelled in this entry.

In the following table, the Counts columns list the number of bonds (or angles) for which Mogul statistics could be retrieved, the number of bonds (or angles) that are observed in the model and the number of bonds (or angles) that are defined in the Chemical Component Dictionary. The Link column lists molecule types, if any, to which the group is linked. The Z score for a bond length (or angle) is the number of standard deviations the observed value is removed from the expected value. A bond length (or angle) with $|Z| > 2$ is considered an outlier worth inspection. RMSZ is the root-mean-square of all Z scores of the bond lengths (or angles).

Mol	Type	Chain	Res	Link	Bond lengths			Bond angles		
					Counts	RMSZ	$\# Z > 2$	Counts	RMSZ	$\# Z > 2$
4	NAG	F	1	1,4	14,14,15	0.22	0	17,19,21	0.64	0
4	NAG	F	2	4	14,14,15	0.24	0	17,19,21	0.50	0
4	BMA	F	3	4	11,11,12	0.23	0	15,15,17	0.43	0
4	MAN	F	4	4	11,11,12	0.40	0	15,15,17	0.33	0

Mol	Type	Chain	Res	Link	Bond lengths			Bond angles		
					Counts	RMSZ	# Z > 2	Counts	RMSZ	# Z > 2
4	MAN	F	5	4	11,11,12	0.35	0	15,15,17	0.41	0
4	MAN	F	6	4	11,11,12	0.26	0	15,15,17	0.35	0
4	MAN	F	7	4	11,11,12	0.31	0	15,15,17	0.39	0
4	NAG	G	1	1,4	14,14,15	0.27	0	17,19,21	0.54	0
4	NAG	G	2	4	14,14,15	0.24	0	17,19,21	0.57	0
4	BMA	G	3	4	11,11,12	0.27	0	15,15,17	0.37	0
4	MAN	G	4	4	11,11,12	0.34	0	15,15,17	0.37	0
4	MAN	G	5	4	11,11,12	0.35	0	15,15,17	0.58	0
4	MAN	G	6	4	11,11,12	0.28	0	15,15,17	0.42	0
4	MAN	G	7	4	11,11,12	0.25	0	15,15,17	0.33	0
4	NAG	H	1	1,4	14,14,15	0.23	0	17,19,21	0.53	0
4	NAG	H	2	4	14,14,15	0.21	0	17,19,21	0.53	0
4	BMA	H	3	4	11,11,12	0.23	0	15,15,17	0.36	0
4	MAN	H	4	4	11,11,12	0.28	0	15,15,17	0.36	0
4	MAN	H	5	4	11,11,12	0.25	0	15,15,17	0.39	0
4	MAN	H	6	4	11,11,12	0.25	0	15,15,17	0.42	0
4	MAN	H	7	4	11,11,12	0.21	0	15,15,17	0.33	0
4	NAG	I	1	1,4	14,14,15	0.26	0	17,19,21	0.53	0
4	NAG	I	2	4	14,14,15	0.22	0	17,19,21	0.46	0
4	BMA	I	3	4	11,11,12	0.26	0	15,15,17	0.45	0
4	MAN	I	4	4	11,11,12	0.33	0	15,15,17	0.49	0
4	MAN	I	5	4	11,11,12	0.27	0	15,15,17	0.43	0
4	MAN	I	6	4	11,11,12	0.29	0	15,15,17	0.37	0
4	MAN	I	7	4	11,11,12	0.27	0	15,15,17	0.32	0
4	NAG	J	1	1,4	14,14,15	0.28	0	17,19,21	0.57	0
4	NAG	J	2	4	14,14,15	0.24	0	17,19,21	0.42	0
4	BMA	J	3	4	11,11,12	0.26	0	15,15,17	0.64	0
4	MAN	J	4	4	11,11,12	0.36	0	15,15,17	0.42	0
4	MAN	J	5	4	11,11,12	0.23	0	15,15,17	0.52	0
4	MAN	J	6	4	11,11,12	0.21	0	15,15,17	0.63	0
4	MAN	J	7	4	11,11,12	0.32	0	15,15,17	0.35	0

In the following table, the Chirals column lists the number of chiral outliers, the number of chiral centers analysed, the number of these observed in the model and the number defined in the Chemical Component Dictionary. Similar counts are reported in the Torsion and Rings columns. '-' means no outliers of that kind were identified.

Mol	Type	Chain	Res	Link	Chirals	Torsions	Rings
4	NAG	F	1	1,4	-	0/6/23/26	0/1/1/1
4	NAG	F	2	4	-	0/6/23/26	0/1/1/1
4	BMA	F	3	4	-	0/2/19/22	0/1/1/1
4	MAN	F	4	4	-	0/2/19/22	0/1/1/1
4	MAN	F	5	4	-	1/2/19/22	0/1/1/1

Continued on next page...

Continued from previous page...

Mol	Type	Chain	Res	Link	Chirals	Torsions	Rings
4	MAN	F	6	4	-	0/2/19/22	0/1/1/1
4	MAN	F	7	4	-	0/2/19/22	0/1/1/1
4	NAG	G	1	1,4	-	0/6/23/26	0/1/1/1
4	NAG	G	2	4	-	0/6/23/26	0/1/1/1
4	BMA	G	3	4	-	0/2/19/22	0/1/1/1
4	MAN	G	4	4	-	2/2/19/22	0/1/1/1
4	MAN	G	5	4	-	0/2/19/22	0/1/1/1
4	MAN	G	6	4	-	0/2/19/22	0/1/1/1
4	MAN	G	7	4	-	0/2/19/22	0/1/1/1
4	NAG	H	1	1,4	-	2/6/23/26	0/1/1/1
4	NAG	H	2	4	-	0/6/23/26	0/1/1/1
4	BMA	H	3	4	-	0/2/19/22	0/1/1/1
4	MAN	H	4	4	-	0/2/19/22	0/1/1/1
4	MAN	H	5	4	-	0/2/19/22	0/1/1/1
4	MAN	H	6	4	-	1/2/19/22	0/1/1/1
4	MAN	H	7	4	-	0/2/19/22	0/1/1/1
4	NAG	I	1	1,4	-	0/6/23/26	0/1/1/1
4	NAG	I	2	4	-	0/6/23/26	0/1/1/1
4	BMA	I	3	4	-	0/2/19/22	0/1/1/1
4	MAN	I	4	4	-	0/2/19/22	0/1/1/1
4	MAN	I	5	4	-	0/2/19/22	0/1/1/1
4	MAN	I	6	4	-	0/2/19/22	0/1/1/1
4	MAN	I	7	4	-	0/2/19/22	0/1/1/1
4	NAG	J	1	1,4	-	2/6/23/26	0/1/1/1
4	NAG	J	2	4	-	0/6/23/26	0/1/1/1
4	BMA	J	3	4	-	2/2/19/22	0/1/1/1
4	MAN	J	4	4	-	0/2/19/22	0/1/1/1
4	MAN	J	5	4	-	0/2/19/22	0/1/1/1
4	MAN	J	6	4	-	1/2/19/22	0/1/1/1
4	MAN	J	7	4	-	0/2/19/22	0/1/1/1

There are no bond length outliers.

There are no bond angle outliers.

There are no chirality outliers.

5 of 11 torsion outliers are listed below:

Mol	Chain	Res	Type	Atoms
4	J	3	BMA	C4-C5-C6-O6
4	J	1	NAG	O5-C5-C6-O6
4	J	3	BMA	O5-C5-C6-O6

Continued on next page...

Continued from previous page...

Mol	Chain	Res	Type	Atoms
4	G	4	MAN	C4-C5-C6-O6
4	J	1	NAG	C4-C5-C6-O6

There are no ring outliers.

No monomer is involved in short contacts.

5.6 Ligand geometry ⓘ

10 ligands are modelled in this entry.

In the following table, the Counts columns list the number of bonds (or angles) for which Mogul statistics could be retrieved, the number of bonds (or angles) that are observed in the model and the number of bonds (or angles) that are defined in the Chemical Component Dictionary. The Link column lists molecule types, if any, to which the group is linked. The Z score for a bond length (or angle) is the number of standard deviations the observed value is removed from the expected value. A bond length (or angle) with $|Z| > 2$ is considered an outlier worth inspection. RMSZ is the root-mean-square of all Z scores of the bond lengths (or angles).

Mol	Type	Chain	Res	Link	Bond lengths			Bond angles		
					Counts	RMSZ	$\# Z > 2$	Counts	RMSZ	$\# Z > 2$
5	NAG	C	501	1	14,14,15	0.28	0	17,19,21	0.60	0
5	NAG	E	501	1	14,14,15	0.23	0	17,19,21	0.44	0
5	NAG	D	501	1	14,14,15	0.25	0	17,19,21	0.42	0
5	NAG	B	501	1	14,14,15	0.26	0	17,19,21	0.52	0
6	P9N	C	509	-	26,26,26	0.29	0	42,42,42	0.39	0
6	P9N	D	509	-	26,26,26	0.29	0	42,42,42	0.37	0
6	P9N	E	509	-	26,26,26	0.28	0	42,42,42	0.39	0
6	P9N	E	510	-	26,26,26	0.29	0	42,42,42	0.41	0
6	P9N	B	509	-	26,26,26	0.31	0	42,42,42	0.38	0
5	NAG	A	501	1	14,14,15	0.30	0	17,19,21	0.66	0

In the following table, the Chirals column lists the number of chiral outliers, the number of chiral centers analysed, the number of these observed in the model and the number defined in the Chemical Component Dictionary. Similar counts are reported in the Torsion and Rings columns. '-' means no outliers of that kind were identified.

Mol	Type	Chain	Res	Link	Chirals	Torsions	Rings
5	NAG	C	501	1	-	0/6/23/26	0/1/1/1
5	NAG	E	501	1	-	1/6/23/26	0/1/1/1
5	NAG	D	501	1	-	0/6/23/26	0/1/1/1
5	NAG	B	501	1	-	4/6/23/26	0/1/1/1
6	P9N	C	509	-	-	0/4/62/62	0/4/4/4

Continued on next page...

Continued from previous page...

Mol	Type	Chain	Res	Link	Chirals	Torsions	Rings
6	P9N	D	509	-	-	0/4/62/62	0/4/4/4
6	P9N	E	509	-	-	0/4/62/62	0/4/4/4
6	P9N	E	510	-	-	0/4/62/62	0/4/4/4
6	P9N	B	509	-	-	0/4/62/62	0/4/4/4
5	NAG	A	501	1	-	0/6/23/26	0/1/1/1

There are no bond length outliers.

There are no bond angle outliers.

There are no chirality outliers.

All (5) torsion outliers are listed below:

Mol	Chain	Res	Type	Atoms
5	B	501	NAG	C4-C5-C6-O6
5	B	501	NAG	O5-C5-C6-O6
5	B	501	NAG	C8-C7-N2-C2
5	E	501	NAG	O5-C5-C6-O6
5	B	501	NAG	O7-C7-N2-C2

There are no ring outliers.

No monomer is involved in short contacts.

5.7 Other polymers [i](#)

There are no such residues in this entry.

5.8 Polymer linkage issues [i](#)

There are no chain breaks in this entry.

6 Fit of model and data ⓘ

6.1 Protein, DNA and RNA chains ⓘ

In the following table, the column labelled ‘#RSRZ> 2’ contains the number (and percentage) of RSRZ outliers, followed by percent RSRZ outliers for the chain as percentile scores relative to all X-ray entries and entries of similar resolution. The OWAB column contains the minimum, median, 95th percentile and maximum values of the occupancy-weighted average B-factor per residue. The column labelled ‘Q< 0.9’ lists the number of (and percentage) of residues with an average occupancy less than 0.9.

Mol	Chain	Analysed	<RSRZ>	#RSRZ>2	OWAB(Å ²)	Q<0.9
1	A	332/367 (90%)	-0.10	6 (1%) 68 55	49, 65, 102, 152	0
1	B	332/367 (90%)	-0.04	9 (2%) 54 39	52, 68, 101, 140	0
1	C	332/367 (90%)	-0.12	6 (1%) 68 55	49, 67, 107, 156	0
1	D	332/367 (90%)	0.00	11 (3%) 46 30	52, 67, 102, 148	0
1	E	332/367 (90%)	-0.07	6 (1%) 68 55	51, 66, 101, 147	0
2	K	125/125 (100%)	-0.02	2 (1%) 72 59	54, 73, 92, 110	0
2	O	125/125 (100%)	-0.01	1 (0%) 86 78	53, 74, 93, 100	0
3	L	124/124 (100%)	0.33	3 (2%) 59 44	52, 76, 100, 113	0
3	M	124/124 (100%)	-0.08	0 100 100	56, 74, 92, 102	0
3	N	124/124 (100%)	-0.10	1 (0%) 86 78	58, 75, 92, 97	0
All	All	2282/2457 (92%)	-0.04	45 (1%) 65 51	49, 68, 100, 156	0

The worst 5 of 45 RSRZ outliers are listed below:

Mol	Chain	Res	Type	RSRZ
1	B	9	MET	5.0
1	D	12	VAL	4.9
1	C	12	VAL	4.0
1	B	12	VAL	4.0
1	B	15	THR	3.9

6.2 Non-standard residues in protein, DNA, RNA chains ⓘ

There are no non-standard protein/DNA/RNA residues in this entry.

6.3 Carbohydrates ⓘ

In the following table, the Atoms column lists the number of modelled atoms in the group and the number defined in the chemical component dictionary. The B-factors column lists the minimum, median, 95th percentile and maximum values of B factors of atoms in the group. The column labelled 'Q< 0.9' lists the number of atoms with occupancy less than 0.9.

Mol	Type	Chain	Res	Atoms	RSCC	RSR	B-factors(Å ²)	Q<0.9
4	MAN	F	5	11/12	0.74	0.34	110,117,124,126	0
4	MAN	F	4	11/12	0.74	0.39	101,104,110,110	0
4	MAN	I	6	11/12	0.76	0.27	97,110,113,114	0
4	MAN	J	6	11/12	0.77	0.32	107,118,122,125	0
4	MAN	J	4	11/12	0.78	0.27	107,110,113,115	0
4	MAN	I	4	11/12	0.80	0.24	102,103,107,108	0
4	MAN	G	4	11/12	0.82	0.25	99,100,102,103	0
4	MAN	H	4	11/12	0.82	0.22	93,95,99,101	0
4	MAN	I	5	11/12	0.82	0.23	104,110,116,116	0
4	MAN	G	6	11/12	0.83	0.35	94,104,108,110	0
4	MAN	J	5	11/12	0.84	0.23	108,117,120,123	0
4	MAN	J	7	11/12	0.84	0.23	88,91,94,96	0
4	MAN	I	7	11/12	0.85	0.19	84,88,92,95	0
4	MAN	H	6	11/12	0.86	0.18	103,111,115,118	0
4	MAN	F	6	11/12	0.87	0.43	111,118,120,121	0
4	MAN	G	5	11/12	0.87	0.25	100,105,111,112	0
4	BMA	H	3	11/12	0.88	0.19	77,83,87,91	0
4	BMA	F	3	11/12	0.89	0.17	76,80,86,94	0
4	MAN	G	7	11/12	0.89	0.18	90,93,98,98	0
4	MAN	F	7	11/12	0.90	0.17	77,81,85,86	0
4	MAN	H	5	11/12	0.90	0.14	101,105,109,112	0
4	MAN	H	7	11/12	0.91	0.18	84,87,90,93	0
4	BMA	I	3	11/12	0.91	0.16	79,85,91,98	0
4	BMA	J	3	11/12	0.93	0.16	82,87,94,102	0
4	BMA	G	3	11/12	0.93	0.19	84,90,92,96	0
4	NAG	G	1	14/15	0.94	0.19	64,65,68,69	0
4	NAG	F	2	14/15	0.95	0.18	60,63,64,68	0
4	NAG	F	1	14/15	0.95	0.16	56,58,59,59	0
4	NAG	H	1	14/15	0.95	0.22	60,62,64,64	0
4	NAG	I	2	14/15	0.95	0.15	61,64,67,71	0
4	NAG	I	1	14/15	0.96	0.19	59,60,62,62	0
4	NAG	H	2	14/15	0.96	0.17	62,63,65,69	0
4	NAG	J	1	14/15	0.96	0.21	61,62,65,66	0
4	NAG	G	2	14/15	0.96	0.18	60,66,69,72	0
4	NAG	J	2	14/15	0.97	0.17	62,66,68,72	0

6.4 Ligands [i](#)

In the following table, the Atoms column lists the number of modelled atoms in the group and the number defined in the chemical component dictionary. The B-factors column lists the minimum, median, 95th percentile and maximum values of B factors of atoms in the group. The column labelled 'Q< 0.9' lists the number of atoms with occupancy less than 0.9.

Mol	Type	Chain	Res	Atoms	RSCC	RSR	B-factors(Å ²)	Q<0.9
5	NAG	D	501	14/15	0.83	0.26	96,106,112,112	0
5	NAG	B	501	14/15	0.87	0.20	97,102,105,106	0
5	NAG	A	501	14/15	0.87	0.25	98,105,107,110	0
5	NAG	E	501	14/15	0.89	0.21	96,102,107,108	0
5	NAG	C	501	14/15	0.89	0.24	102,108,109,111	0
6	P9N	B	509	23/23	0.94	0.25	55,59,62,65	0
6	P9N	D	509	23/23	0.94	0.28	64,65,69,70	0
6	P9N	E	509	23/23	0.95	0.20	54,55,57,59	0
6	P9N	E	510	23/23	0.95	0.22	53,56,59,59	0
6	P9N	C	509	23/23	0.96	0.24	53,57,63,66	0

6.5 Other polymers [i](#)

There are no such residues in this entry.