



Full wwPDB X-ray Structure Validation Report ⓘ

Aug 8, 2020 – 01:47 PM BST

PDB ID : 1O9M
Title : The Complex of a novel antibiotic with the Aminoacyl Site of the Bacterial Ribosome Revealed by X-Ray Crystallography.
Authors : Russell, R.; Murray, J.B.
Deposited on : 2002-12-17
Resolution : 2.40 Å(reported)

This is a Full wwPDB X-ray Structure Validation Report for a publicly released PDB entry.

We welcome your comments at validation@mail.wwpdb.org

A user guide is available at

<https://www.wwpdb.org/validation/2017/XrayValidationReportHelp>

with specific help available everywhere you see the ⓘ symbol.

The following versions of software and data (see [references ⓘ](#)) were used in the production of this report:

MolProbity : 4.02b-467
Mogul : 1.8.5 (274361), CSD as541be (2020)
Xtriage (Phenix) : **NOT EXECUTED**
EDS : **NOT EXECUTED**
Percentile statistics : 20191225.v01 (using entries in the PDB archive December 25th 2019)
Ideal geometry (proteins) : Engh & Huber (2001)
Ideal geometry (DNA, RNA) : Parkinson et al. (1996)
Validation Pipeline (wwPDB-VP) : 2.13.1

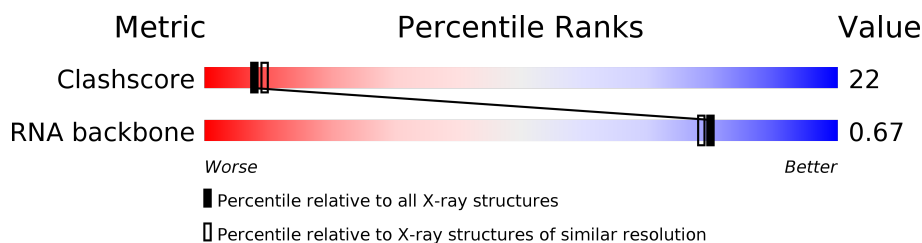
1 Overall quality at a glance

The following experimental techniques were used to determine the structure:

X-RAY DIFFRACTION

The reported resolution of this entry is 2.40 Å.

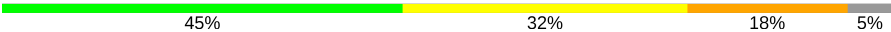

Percentile scores (ranging between 0-100) for global validation metrics of the entry are shown in the following graphic. The table shows the number of entries on which the scores are based.



Metric	Whole archive (#Entries)	Similar resolution (#Entries, resolution range(Å))
Clashscore	141614	4398 (2.40-2.40)
RNA backbone	3102	1174 (2.80-2.00)

The table below summarises the geometric issues observed across the polymeric chains and their fit to the electron density. The red, orange, yellow and green segments on the lower bar indicate the fraction of residues that contain outliers for ≥ 3 , 2, 1 and 0 types of geometric quality criteria respectively. A grey segment represents the fraction of residues that are not modelled. The numeric value for each fraction is indicated below the corresponding segment, with a dot representing fractions $\leq 5\%$.

Note EDS was not executed.

Mol	Chain	Length	Quality of chain
1	A	22	 45% 32% 18% 5%
1	B	22	 50% 45% 5%

The following table lists non-polymeric compounds, carbohydrate monomers and non-standard residues in protein, DNA, RNA chains that are outliers for geometric or electron-density-fit criteria:

Mol	Type	Chain	Res	Chirality	Geometry	Clashes	Electron density
3	PA2	B	2500	-	-	X	-
5	42B	B	2502	-	-	X	-

2 Entry composition [i](#)

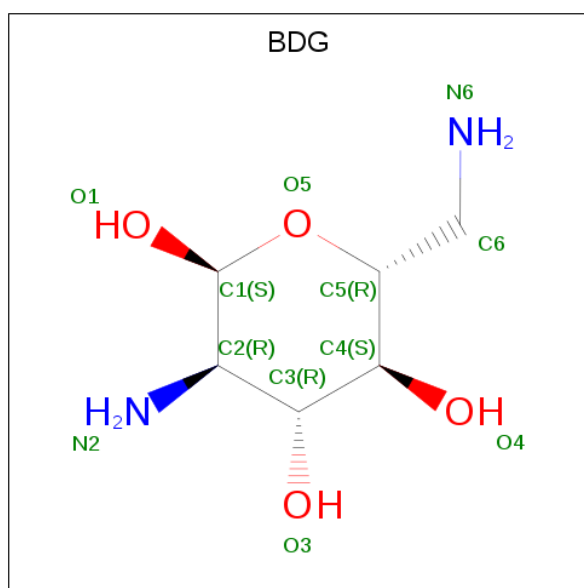
There are 6 unique types of molecules in this entry. The entry contains 992 atoms, of which 0 are hydrogens and 0 are deuteriums.

In the tables below, the ZeroOcc column contains the number of atoms modelled with zero occupancy, the AltConf column contains the number of residues with at least one atom in alternate conformation and the Trace column contains the number of residues modelled with at most 2 atoms.

- Molecule 1 is a RNA chain called EUBACTERIAL A-SITE.

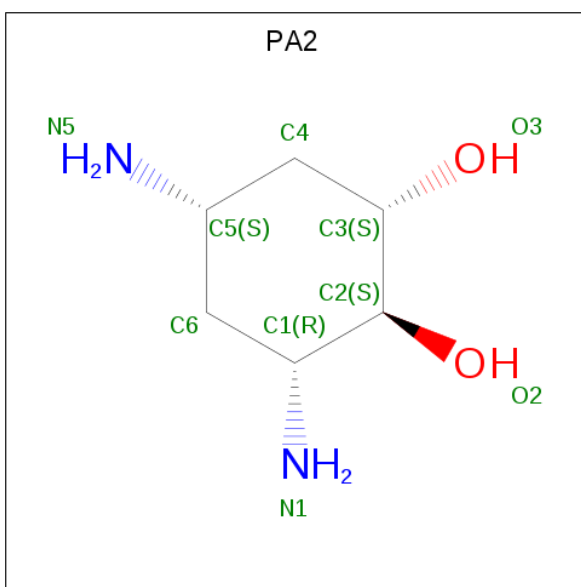
Mol	Chain	Residues	Atoms					ZeroOcc	AltConf	Trace
1	A	21	Total	C	N	O	P	0	0	0
			446	200	82	144	20			
1	B	21	Total	C	N	O	P	0	0	0
			446	200	82	144	20			

- Molecule 2 is 2,6-diamino-2,6-dideoxy-alpha-D-glucopyranose (three-letter code: BDG) (formula: C₆H₁₄N₂O₄).



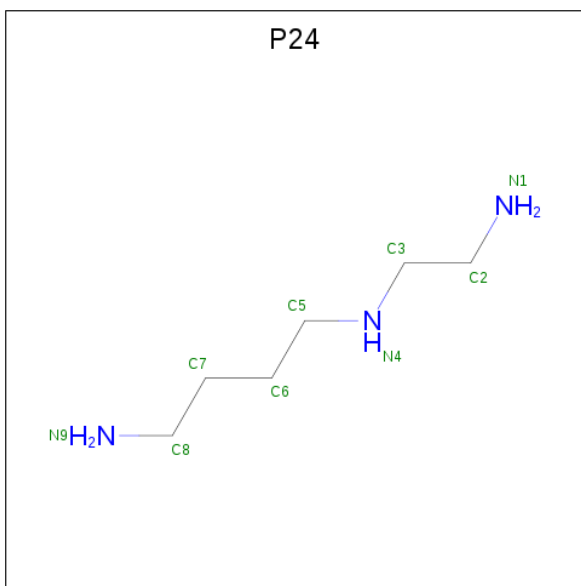
Mol	Chain	Residues	Atoms				ZeroOcc	AltConf
2	B	1	Total	C	N	O	0	0
			12	6	2	4		

- Molecule 3 is PAROMOMYCIN (RING 2) (three-letter code: PA2) (formula: C₆H₁₄N₂O₂).



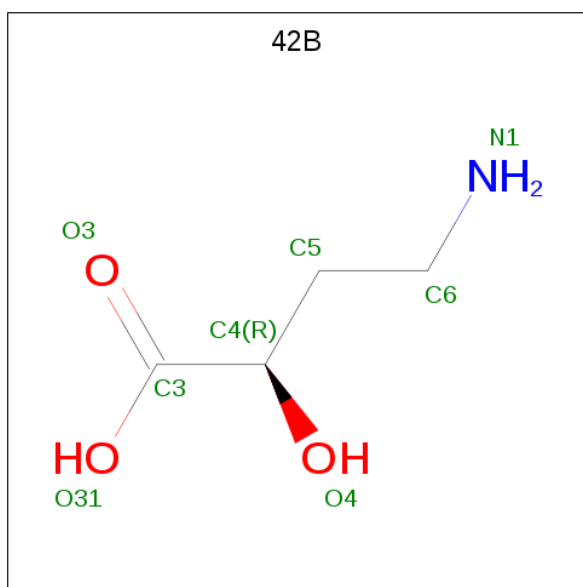
Mol	Chain	Residues	Atoms				ZeroOcc	AltConf
3	B	1	Total	C	N	O	0	0
			10	6	2	2		

- Molecule 4 is 1-(AMINOETHYL)AMINO-4-AMINO BUTANE (three-letter code: P24) (formula: $C_6H_{17}N_3$).



Mol	Chain	Residues	Atoms			ZeroOcc	AltConf
4	B	1	Total	C	N	0	0
			8	6	2		

- Molecule 5 is 4-AMINO-2-HYDROXYBUTANOIC ACID (three-letter code: 42B) (formula: $C_4H_9NO_3$).



Mol	Chain	Residues	Atoms				ZeroOcc	AltConf
5	B	1	Total	C	N	O	0	0
			7	4	1	2		

- Molecule 6 is water.

Mol	Chain	Residues	Atoms		ZeroOcc	AltConf
6	A	30	Total	O	0	0
			30	30		
6	B	33	Total	O	0	0
			33	33		

3 Residue-property plots [i](#)

These plots are drawn for all protein, RNA, DNA and oligosaccharide chains in the entry. The first graphic for a chain summarises the proportions of the various outlier classes displayed in the second graphic. The second graphic shows the sequence view annotated by issues in geometry. Residues are color-coded according to the number of geometric quality criteria for which they contain at least one outlier: green = 0, yellow = 1, orange = 2 and red = 3 or more. Stretches of 2 or more consecutive residues without any outlier are shown as a green connector. Residues present in the sample, but not in the model, are shown in grey.

Note EDS was not executed.

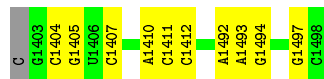
- Molecule 1: EUBACTERIAL A-SITE

Chain A: 



- Molecule 1: EUBACTERIAL A-SITE

Chain B: 



4 Data and refinement statistics

Xtriage (Phenix) and EDS were not executed - this section is therefore incomplete.

Property	Value	Source
Space group	P 21 21 21	Depositor
Cell constants a, b, c, α , β , γ	32.80 Å 46.55 Å 88.81 Å 90.00° 90.00° 90.00°	Depositor
Resolution (Å)	30.00 – 2.40	Depositor
% Data completeness (in resolution range)	92.2 (30.00-2.40)	Depositor
R_{merge}	(Not available)	Depositor
R_{sym}	0.07	Depositor
Refinement program	CNS	Depositor
R, R_{free}	0.251 , 0.298	Depositor
Estimated twinning fraction	No twinning to report.	Xtriage
Total number of atoms	992	wwPDB-VP
Average B, all atoms (Å ²)	46.0	wwPDB-VP

5 Model quality

5.1 Standard geometry

Bond lengths and bond angles in the following residue types are not validated in this section: P24, PA2, 42B, BDG

The Z score for a bond length (or angle) is the number of standard deviations the observed value is removed from the expected value. A bond length (or angle) with $|Z| > 5$ is considered an outlier worth inspection. RMSZ is the root-mean-square of all Z scores of the bond lengths (or angles).

Mol	Chain	Bond lengths		Bond angles	
		RMSZ	$\# Z > 5$	RMSZ	$\# Z > 5$
1	A	0.45	0/498	0.71	0/775
1	B	0.52	0/498	0.72	0/775
All	All	0.49	0/996	0.71	0/1550

There are no bond length outliers.

There are no bond angle outliers.

There are no chirality outliers.

There are no planarity outliers.

5.2 Too-close contacts

In the following table, the Non-H and H(model) columns list the number of non-hydrogen atoms and hydrogen atoms in the chain respectively. The H(added) column lists the number of hydrogen atoms added and optimized by MolProbity. The Clashes column lists the number of clashes within the asymmetric unit, whereas Symm-Clashes lists symmetry related clashes.

Mol	Chain	Non-H	H(model)	H(added)	Clashes	Symm-Clashes
1	A	446	0	230	14	0
1	B	446	0	230	6	0
2	B	12	0	13	0	0
3	B	10	0	12	7	0
4	B	8	0	12	1	0
5	B	7	0	8	8	0
6	A	30	0	0	0	0
6	B	33	0	0	0	0
All	All	992	0	505	27	0

The all-atom clashscore is defined as the number of clashes found per 1000 atoms (including hydrogen atoms). The all-atom clashscore for this structure is 22.

All (27) close contacts within the same asymmetric unit are listed below, sorted by their clash magnitude.

Atom-1	Atom-2	Interatomic distance (Å)	Clash overlap (Å)
3:B:2500:PA2:HN12	5:B:2502:42B:C3	1.36	1.32
3:B:2500:PA2:N1	5:B:2502:42B:C4	2.25	0.99
3:B:2500:PA2:HN12	5:B:2502:42B:C4	1.79	0.94
3:B:2500:PA2:C1	5:B:2502:42B:C3	2.70	0.69
1:A:1495:U:H2'	1:A:1496:C:C6	2.28	0.67
1:A:1492:A:O2'	1:A:1493:A:OP1	2.12	0.63
1:A:1406:U:O2'	1:A:1407:C:OP1	2.16	0.60
1:A:1493:A:C2'	1:A:1494:G:H5'	2.33	0.58
1:B:1404:C:O2'	1:B:1405:G:H5'	2.04	0.56
1:A:1494:G:O2'	1:A:1495:U:H5'	2.07	0.54
1:B:1404:C:H2'	1:B:1405:G:O4'	2.07	0.54
1:A:1407:C:O2'	1:A:1408:A:H5'	2.07	0.54
1:B:1497:G:O6	5:B:2502:42B:H6C2	2.10	0.51
1:A:1493:A:H2'	1:A:1494:G:H5'	1.94	0.49
3:B:2500:PA2:N1	5:B:2502:42B:H4	2.25	0.48
1:B:1493:A:H5''	1:B:1494:G:OP2	2.14	0.47
1:B:1411:C:H2'	1:B:1412:C:C6	2.49	0.47
1:A:1493:A:C8	1:A:1494:G:C8	3.03	0.46
1:A:1495:U:H2'	1:A:1496:C:O4'	2.15	0.46
1:A:1406:U:O2'	1:A:1407:C:P	2.75	0.45
1:A:1493:A:H2'	1:A:1494:G:O4'	2.16	0.45
1:B:1410:A:H2'	1:B:1411:C:C6	2.54	0.43
1:A:1406:U:HO2'	1:A:1407:C:P	2.40	0.43
1:A:1490:U:H2'	1:A:1491:G:O4'	2.19	0.42
3:B:2500:PA2:HN11	5:B:2502:42B:C4	2.22	0.42
1:A:1405:G:OP2	4:B:2501:P24:H62	2.20	0.41
3:B:2500:PA2:HN11	5:B:2502:42B:H4	1.85	0.41

There are no symmetry-related clashes.

5.3 Torsion angles [i](#)

5.3.1 Protein backbone [i](#)

There are no protein molecules in this entry.

5.3.2 Protein sidechains [i](#)

There are no protein molecules in this entry.

5.3.3 RNA [i](#)

Mol	Chain	Analysed	Backbone Outliers	Pucker Outliers
1	A	20/22 (90%)	4 (20%)	2 (10%)
1	B	20/22 (90%)	2 (10%)	0
All	All	40/44 (90%)	6 (15%)	2 (5%)

All (6) RNA backbone outliers are listed below:

Mol	Chain	Res	Type
1	A	1406	U
1	A	1407	C
1	A	1492	A
1	A	1493	A
1	B	1407	C
1	B	1492	A

All (2) RNA pucker outliers are listed below:

Mol	Chain	Res	Type
1	A	1406	U
1	A	1492	A

5.4 Non-standard residues in protein, DNA, RNA chains [i](#)

There are no non-standard protein/DNA/RNA residues in this entry.

5.5 Carbohydrates [i](#)

There are no monosaccharides in this entry.

5.6 Ligand geometry [i](#)

4 ligands are modelled in this entry.

In the following table, the Counts columns list the number of bonds (or angles) for which Mogul statistics could be retrieved, the number of bonds (or angles) that are observed in the model and the number of bonds (or angles) that are defined in the Chemical Component Dictionary. The Link column lists molecule types, if any, to which the group is linked. The Z score for a bond length (or angle) is the number of standard deviations the observed value is removed from the expected value. A bond length (or angle) with $|Z| > 2$ is considered an outlier worth inspection. RMSZ is the root-mean-square of all Z scores of the bond lengths (or angles).

Mol	Type	Chain	Res	Link	Bond lengths			Bond angles		
					Counts	RMSZ	# Z > 2	Counts	RMSZ	# Z > 2
4	P24	B	2501	3	7,7,8	0.43	0	6,6,7	9.59	2 (33%)
3	PA2	B	2500	2,5,4	10,10,10	1.74	3 (30%)	13,14,14	0.89	1 (7%)
2	BDG	B	2499	3	12,12,12	2.04	4 (33%)	15,17,17	0.95	0
5	42B	B	2502	3	5,6,7	1.97	2 (40%)	4,6,8	1.61	1 (25%)

In the following table, the Chirals column lists the number of chiral outliers, the number of chiral centers analysed, the number of these observed in the model and the number defined in the Chemical Component Dictionary. Similar counts are reported in the Torsion and Rings columns. '-' means no outliers of that kind were identified.

Mol	Type	Chain	Res	Link	Chirals	Torsions	Rings
4	P24	B	2501	3	-	2/5/5/6	-
3	PA2	B	2500	2,5,4	-	-	0/1/1/1
2	BDG	B	2499	3	-	0/2/22/22	0/1/1/1
5	42B	B	2502	3	-	2/4/5/7	-

All (9) bond length outliers are listed below:

Mol	Chain	Res	Type	Atoms	Z	Observed(Å)	Ideal(Å)
2	B	2499	BDG	C1-C2	4.21	1.57	1.52
2	B	2499	BDG	C3-C2	3.59	1.58	1.53
3	B	2500	PA2	C4-C3	3.45	1.58	1.52
5	B	2502	42B	O4-C4	-3.26	1.37	1.43
5	B	2502	42B	O3-C3	-2.90	1.08	1.19
3	B	2500	PA2	C3-C2	2.76	1.56	1.52
2	B	2499	BDG	C6-N6	-2.54	1.37	1.48
3	B	2500	PA2	C6-C1	2.29	1.58	1.53
2	B	2499	BDG	O1-C1	2.16	1.46	1.39

All (4) bond angle outliers are listed below:

Mol	Chain	Res	Type	Atoms	Z	Observed(°)	Ideal(°)
4	B	2501	P24	C5-N4-C3	22.85	162.12	113.43
4	B	2501	P24	C6-C5-N4	-5.44	97.47	112.14
5	B	2502	42B	C5-C4-C3	-2.71	106.85	111.55
3	B	2500	PA2	C3-C4-C5	-2.30	109.70	112.39

There are no chirality outliers.

All (4) torsion outliers are listed below:

Mol	Chain	Res	Type	Atoms
4	B	2501	P 24	C2-C3-N4-C5
5	B	2502	42B	C3-C4-C5-C6
5	B	2502	42B	O4-C4-C5-C6
4	B	2501	P 24	C5-C6-C7-C8

There are no ring outliers.

3 monomers are involved in 9 short contacts:

Mol	Chain	Res	Type	Clashes	Symm-Clashes
4	B	2501	P 24	1	0
3	B	2500	PA2	7	0
5	B	2502	42B	8	0

5.7 Other polymers [i](#)

There are no such residues in this entry.

5.8 Polymer linkage issues [i](#)

There are no chain breaks in this entry.

6 Fit of model and data ⓘ

6.1 Protein, DNA and RNA chains ⓘ

EDS was not executed - this section is therefore empty.

6.2 Non-standard residues in protein, DNA, RNA chains ⓘ

EDS was not executed - this section is therefore empty.

6.3 Carbohydrates ⓘ

EDS was not executed - this section is therefore empty.

6.4 Ligands ⓘ

EDS was not executed - this section is therefore empty.

6.5 Other polymers ⓘ

EDS was not executed - this section is therefore empty.