



Full wwPDB X-ray Structure Validation Report ⓘ

Aug 9, 2020 – 02:39 PM BST

PDB ID : 1OA3
Title : Comparison of Family 12 Glycoside Hydrolases and Recruited Substitutions Important for Thermal Stability
Authors : Sandgren, M.; Gualfetti, P.J.; Shaw, A.; Gross, L.S.; Saldajeno, M.; Day, A.G.; Jones, T.A.; Mitchinson, C.
Deposited on : 2002-12-28
Resolution : 1.70 Å(reported)

This is a Full wwPDB X-ray Structure Validation Report for a publicly released PDB entry.

We welcome your comments at validation@mail.wwpdb.org

A user guide is available at

<https://www.wwpdb.org/validation/2017/XrayValidationReportHelp>

with specific help available everywhere you see the ⓘ symbol.

The following versions of software and data (see [references ⓘ](#)) were used in the production of this report:

MolProbity : 4.02b-467
Mogul : 1.8.5 (274361), CSD as541be (2020)
Xtriage (Phenix) : 1.13
EDS : 2.13.1
Percentile statistics : 20191225.v01 (using entries in the PDB archive December 25th 2019)
Refmac : 5.8.0158
CCP4 : 7.0.044 (Gargrove)
Ideal geometry (proteins) : Engh & Huber (2001)
Ideal geometry (DNA, RNA) : Parkinson et al. (1996)
Validation Pipeline (wwPDB-VP) : 2.13.1

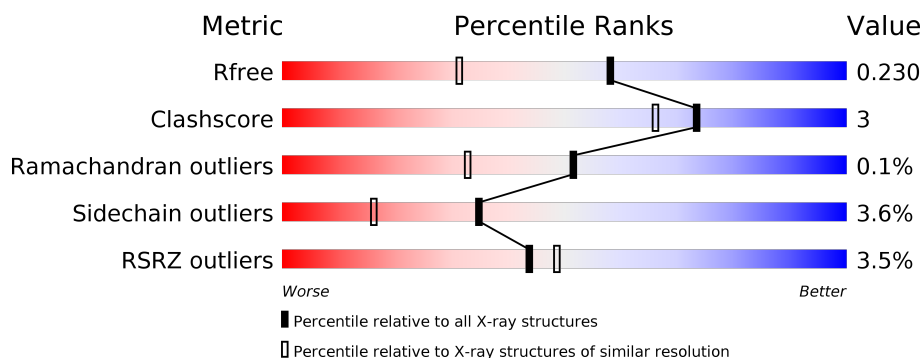
1 Overall quality at a glance ⓘ

The following experimental techniques were used to determine the structure:

X-RAY DIFFRACTION

The reported resolution of this entry is 1.70 Å.

Percentile scores (ranging between 0-100) for global validation metrics of the entry are shown in the following graphic. The table shows the number of entries on which the scores are based.



Metric	Whole archive (#Entries)	Similar resolution (#Entries, resolution range(Å))
R_{free}	130704	4298 (1.70-1.70)
Clashscore	141614	4695 (1.70-1.70)
Ramachandran outliers	138981	4610 (1.70-1.70)
Sidechain outliers	138945	4610 (1.70-1.70)
RSRZ outliers	127900	4222 (1.70-1.70)

The table below summarises the geometric issues observed across the polymeric chains and their fit to the electron density. The red, orange, yellow and green segments on the lower bar indicate the fraction of residues that contain outliers for ≥ 3 , 2, 1 and 0 types of geometric quality criteria respectively. A grey segment represents the fraction of residues that are not modelled. The numeric value for each fraction is indicated below the corresponding segment, with a dot representing fractions $\leq 5\%$. The upper red bar (where present) indicates the fraction of residues that have poor fit to the electron density. The numeric value is given above the bar.

Mol	Chain	Length	Quality of chain
1	A	218	<div> <div>2%</div> <div> <div></div> <div>90%</div> <div>8% ..</div> </div> </div>
1	B	218	<div> <div>4%</div> <div> <div></div> <div>92%</div> <div>8%</div> </div> </div>
1	C	218	<div> <div>5%</div> <div> <div></div> <div>89%</div> <div>10%</div> </div> </div>
1	D	218	<div> <div>3%</div> <div> <div></div> <div>93%</div> <div>7%</div> </div> </div>

2 Entry composition

There are 3 unique types of molecules in this entry. The entry contains 7300 atoms, of which 0 are hydrogens and 0 are deuteriums.

In the tables below, the ZeroOcc column contains the number of atoms modelled with zero occupancy, the AltConf column contains the number of residues with at least one atom in alternate conformation and the Trace column contains the number of residues modelled with at most 2 atoms.

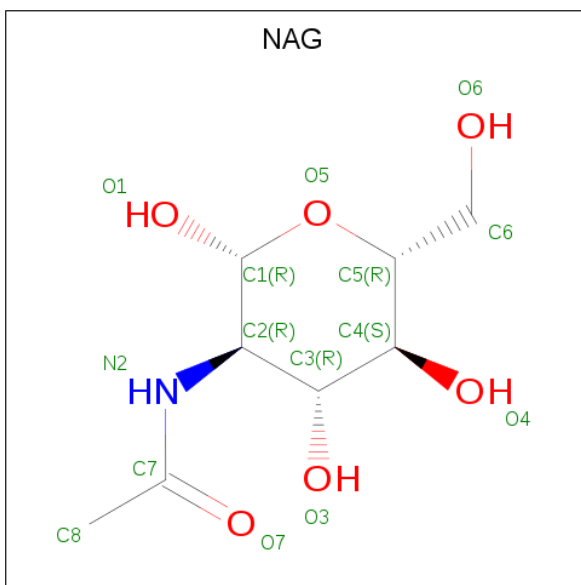
- Molecule 1 is a protein called ENDO-BETA-1-4-GLUCANASE.

Mol	Chain	Residues	Atoms					ZeroOcc	AltConf	Trace
1	A	218	Total	C	N	O	S	0	0	0
			1662	1046	277	334	5			
1	B	218	Total	C	N	O	S	0	0	0
			1662	1046	277	334	5			
1	C	218	Total	C	N	O	S	0	0	0
			1662	1046	277	334	5			
1	D	218	Total	C	N	O	S	0	0	0
			1662	1046	277	334	5			

There are 4 discrepancies between the modelled and reference sequences:

Chain	Residue	Modelled	Actual	Comment	Reference
A	1	PCA	GLN	modified residue	UNP Q8NJY6
B	1	PCA	GLN	modified residue	UNP Q8NJY6
C	1	PCA	GLN	modified residue	UNP Q8NJY6
D	1	PCA	GLN	modified residue	UNP Q8NJY6

- Molecule 2 is 2-acetamido-2-deoxy-beta-D-glucopyranose (three-letter code: NAG) (formula: C₈H₁₅NO₆).



Mol	Chain	Residues	Atoms				ZeroOcc	AltConf
2	A	1	Total	C	N	O	0	0
			14	8	1	5		
2	B	1	Total	C	N	O	0	0
			14	8	1	5		
2	C	1	Total	C	N	O	0	0
			14	8	1	5		
2	D	1	Total	C	N	O	0	0
			14	8	1	5		

- Molecule 3 is water.

Mol	Chain	Residues	Atoms		ZeroOcc	AltConf
3	A	143	Total	O	0	0
			143	143		
3	B	162	Total	O	0	0
			162	162		
3	C	139	Total	O	0	0
			139	139		
3	D	152	Total	O	0	0
			152	152		

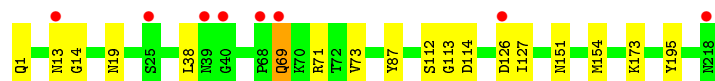
3 Residue-property plots [i](#)

These plots are drawn for all protein, RNA, DNA and oligosaccharide chains in the entry. The first graphic for a chain summarises the proportions of the various outlier classes displayed in the second graphic. The second graphic shows the sequence view annotated by issues in geometry and electron density. Residues are color-coded according to the number of geometric quality criteria for which they contain at least one outlier: green = 0, yellow = 1, orange = 2 and red = 3 or more. A red dot above a residue indicates a poor fit to the electron density ($RSRZ > 2$). Stretches of 2 or more consecutive residues without any outlier are shown as a green connector. Residues present in the sample, but not in the model, are shown in grey.

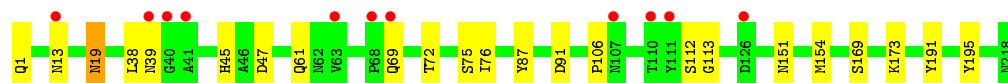
- Molecule 1: ENDO-BETA-1-4-GLUCANASE



- Molecule 1: ENDO-BETA-1-4-GLUCANASE



- Molecule 1: ENDO-BETA-1-4-GLUCANASE



- Molecule 1: ENDO-BETA-1-4-GLUCANASE



4 Data and refinement statistics

Property	Value	Source
Space group	P 1 21 1	Depositor
Cell constants a, b, c, α , β , γ	62.49Å 77.55Å 83.41Å 90.00° 98.46° 90.00°	Depositor
Resolution (Å)	29.00 – 1.70 29.73 – 1.70	Depositor EDS
% Data completeness (in resolution range)	98.9 (29.00-1.70) 98.9 (29.73-1.70)	Depositor EDS
R_{merge}	(Not available)	Depositor
R_{sym}	0.10	Depositor
$\langle I/\sigma(I) \rangle$ ¹	3.67 (at 1.70Å)	Xtriage
Refinement program	REFMAC	Depositor
R, R_{free}	0.192 , 0.217 0.204 , 0.230	Depositor DCC
R_{free} test set	2573 reflections (3.01%)	wwPDB-VP
Wilson B-factor (Å ²)	9.7	Xtriage
Anisotropy	0.371	Xtriage
Bulk solvent k_{sol} (e/Å ³), B_{sol} (Å ²)	0.35 , 46.7	EDS
L-test for twinning ²	$\langle L \rangle = 0.52$, $\langle L^2 \rangle = 0.36$	Xtriage
Estimated twinning fraction	No twinning to report.	Xtriage
F_o, F_c correlation	0.95	EDS
Total number of atoms	7300	wwPDB-VP
Average B, all atoms (Å ²)	11.0	wwPDB-VP

Xtriage's analysis on translational NCS is as follows: *The analyses of the Patterson function reveals a significant off-origin peak that is 59.79 % of the origin peak, indicating pseudo-translational symmetry. The chance of finding a peak of this or larger height randomly in a structure without pseudo-translational symmetry is equal to 1.6763e-05. The detected translational NCS is most likely also responsible for the elevated intensity ratio.*

¹ Intensities estimated from amplitudes.

² Theoretical values of $\langle |L| \rangle$, $\langle L^2 \rangle$ for acentric reflections are 0.5, 0.333 respectively for untwinned datasets, and 0.375, 0.2 for perfectly twinned datasets.

5 Model quality

5.1 Standard geometry

Bond lengths and bond angles in the following residue types are not validated in this section: PCA, NAG

The Z score for a bond length (or angle) is the number of standard deviations the observed value is removed from the expected value. A bond length (or angle) with $|Z| > 5$ is considered an outlier worth inspection. RMSZ is the root-mean-square of all Z scores of the bond lengths (or angles).

Mol	Chain	Bond lengths		Bond angles	
		RMSZ	$\# Z > 5$	RMSZ	$\# Z > 5$
1	A	0.53	0/1702	0.79	3/2324 (0.1%)
1	B	0.51	0/1702	0.76	3/2324 (0.1%)
1	C	0.52	0/1702	0.73	1/2324 (0.0%)
1	D	0.56	0/1702	0.75	1/2324 (0.0%)
All	All	0.53	0/6808	0.76	8/9296 (0.1%)

There are no bond length outliers.

All (8) bond angle outliers are listed below:

Mol	Chain	Res	Type	Atoms	Z	Observed(°)	Ideal(°)
1	A	38	LEU	CB-CG-CD1	7.98	124.56	111.00
1	A	126	ASP	CB-CG-OD2	6.47	124.12	118.30
1	A	181	ASP	CB-CG-OD2	6.39	124.05	118.30
1	D	91	ASP	CB-CG-OD2	6.14	123.83	118.30
1	C	91	ASP	CB-CG-OD2	6.04	123.73	118.30
1	B	114	ASP	CB-CG-OD2	5.17	122.95	118.30
1	B	38	LEU	CB-CG-CD1	5.09	119.65	111.00
1	B	38	LEU	CB-CG-CD2	5.04	119.58	111.00

There are no chirality outliers.

There are no planarity outliers.

5.2 Too-close contacts

In the following table, the Non-H and H(model) columns list the number of non-hydrogen atoms and hydrogen atoms in the chain respectively. The H(added) column lists the number of hydrogen atoms added and optimized by MolProbity. The Clashes column lists the number of clashes within the asymmetric unit, whereas Symm-Clashes lists symmetry related clashes.

Mol	Chain	Non-H	H(model)	H(added)	Clashes	Symm-Clashes
1	A	1662	0	1515	16	0
1	B	1662	0	1515	7	0
1	C	1662	0	1515	14	1
1	D	1662	0	1515	5	1
2	A	14	0	13	0	0
2	B	14	0	13	0	0
2	C	14	0	13	0	0
2	D	14	0	13	0	0
3	A	143	0	0	0	0
3	B	162	0	0	0	0
3	C	139	0	0	0	0
3	D	152	0	0	0	0
All	All	7300	0	6112	42	1

The all-atom clashscore is defined as the number of clashes found per 1000 atoms (including hydrogen atoms). The all-atom clashscore for this structure is 3.

All (42) close contacts within the same asymmetric unit are listed below, sorted by their clash magnitude.

Atom-1	Atom-2	Interatomic distance (Å)	Clash overlap (Å)
1:A:13:ASN:CG	1:A:14:GLY:H	1.54	1.03
1:B:13:ASN:CG	1:B:14:GLY:H	1.62	0.99
1:A:126:ASP:OD1	1:A:126:ASP:N	1.96	0.94
1:A:13:ASN:CG	1:A:14:GLY:N	2.21	0.91
1:A:13:ASN:HD21	1:A:15:TYR:HD2	0.98	0.90
1:A:13:ASN:ND2	1:A:15:TYR:HD2	1.71	0.88
1:B:13:ASN:OD1	1:B:14:GLY:N	2.07	0.86
1:A:13:ASN:ND2	1:A:15:TYR:CD2	2.47	0.79
1:B:13:ASN:CG	1:B:14:GLY:N	2.31	0.77
1:A:12:GLY:O	1:A:13:ASN:ND2	2.24	0.70
1:C:76:ILE:O	1:C:173:LYS:HE3	1.99	0.62
1:C:69:GLN:HG2	1:C:69:GLN:O	2.01	0.60
1:C:72:THR:HG22	1:C:75:SER:HB3	1.83	0.60
1:C:72:THR:HG23	1:C:75:SER:H	1.67	0.59
1:C:112:SER:HB2	1:C:154:MET:HE1	1.84	0.59
1:B:73:VAL:O	1:B:173:LYS:NZ	2.37	0.57
1:C:45:HIS:HD2	1:C:47:ASP:OD1	1.86	0.57
1:D:76:ILE:O	1:D:173:LYS:HE3	2.04	0.57
1:A:113:GLY:H	1:A:154:MET:HE2	1.74	0.53
1:C:106:PRO:HG3	1:C:191:TYR:CZ	2.44	0.53
1:C:113:GLY:H	1:C:154:MET:CE	2.23	0.52
1:D:45:HIS:HD2	1:D:47:ASP:OD1	1.95	0.50

Continued on next page...

Continued from previous page...

Atom-1	Atom-2	Interatomic distance (Å)	Clash overlap (Å)
1:A:13:ASN:OD1	1:A:14:GLY:N	2.21	0.47
1:B:112:SER:HB2	1:B:154:MET:HE1	1.97	0.47
1:B:69:GLN:NE2	1:B:71:ARG:HD2	2.30	0.47
1:C:13:ASN:HB2	1:C:38:LEU:O	2.15	0.47
1:D:126:ASP:OD1	1:D:126:ASP:C	2.53	0.47
1:B:113:GLY:H	1:B:154:MET:HE2	1.81	0.46
1:C:19:ASN:ND2	1:C:61:GLN:HE21	2.16	0.44
1:A:112:SER:HB2	1:A:154:MET:HE1	2.01	0.43
1:A:45:HIS:HD2	1:A:47:ASP:OD1	2.01	0.42
1:C:19:ASN:HA	1:C:19:ASN:HD22	1.65	0.42
1:A:19:ASN:HD22	1:A:33:VAL:HG13	1.84	0.42
1:A:19:ASN:ND2	1:A:61:GLN:HE21	2.18	0.42
1:A:29:GLY:HA3	1:A:49:GLN:O	2.20	0.42
1:C:19:ASN:HD21	1:C:61:GLN:HE21	1.68	0.42
1:D:19:ASN:HD22	1:D:19:ASN:HA	1.67	0.42
1:A:19:ASN:HA	1:A:19:ASN:HD22	1.71	0.41
1:A:13:ASN:ND2	1:A:38:LEU:O	2.54	0.41
1:C:72:THR:CG2	1:C:75:SER:HB3	2.51	0.41
1:C:113:GLY:H	1:C:154:MET:HE2	1.87	0.40
1:D:130:ILE:HD13	1:D:156:VAL:HG21	2.02	0.40

All (1) symmetry-related close contacts are listed below. The label for Atom-2 includes the symmetry operator and encoded unit-cell translations to be applied.

Atom-1	Atom-2	Interatomic distance (Å)	Clash overlap (Å)
1:C:169:SER:OG	1:D:169:SER:OG[2_546]	2.19	0.01

5.3 Torsion angles [i](#)

5.3.1 Protein backbone [i](#)

In the following table, the Percentiles column shows the percent Ramachandran outliers of the chain as a percentile score with respect to all X-ray entries followed by that with respect to entries of similar resolution.

The Analysed column shows the number of residues for which the backbone conformation was analysed, and the total number of residues.

Mol	Chain	Analysed	Favoured	Allowed	Outliers	Percentiles
1	A	216/218 (99%)	210 (97%)	6 (3%)	0	100 100

Continued on next page...

Continued from previous page...

Mol	Chain	Analysed	Favoured	Allowed	Outliers	Percentiles	
1	B	216/218 (99%)	211 (98%)	4 (2%)	1 (0%)	29	13
1	C	216/218 (99%)	212 (98%)	4 (2%)	0	100	100
1	D	216/218 (99%)	210 (97%)	6 (3%)	0	100	100
All	All	864/872 (99%)	843 (98%)	20 (2%)	1 (0%)	51	33

All (1) Ramachandran outliers are listed below:

Mol	Chain	Res	Type
1	B	127	ILE

5.3.2 Protein sidechains ⓘ

In the following table, the Percentiles column shows the percent sidechain outliers of the chain as a percentile score with respect to all X-ray entries followed by that with respect to entries of similar resolution.

The Analysed column shows the number of residues for which the sidechain conformation was analysed, and the total number of residues.

Mol	Chain	Analysed	Rotameric	Outliers	Percentiles	
1	A	173/173 (100%)	165 (95%)	8 (5%)	27	10
1	B	173/173 (100%)	167 (96%)	6 (4%)	36	17
1	C	173/173 (100%)	168 (97%)	5 (3%)	42	23
1	D	173/173 (100%)	167 (96%)	6 (4%)	36	17
All	All	692/692 (100%)	667 (96%)	25 (4%)	35	16

All (25) residues with a non-rotameric sidechain are listed below:

Mol	Chain	Res	Type
1	A	13	ASN
1	A	19	ASN
1	A	38	LEU
1	A	39	ASN
1	A	87	TYR
1	A	126	ASP
1	A	151	ASN
1	A	195	TYR
1	B	19	ASN
1	B	69	GLN

Continued on next page...

Continued from previous page...

Mol	Chain	Res	Type
1	B	87	TYR
1	B	126	ASP
1	B	151	ASN
1	B	195	TYR
1	C	19	ASN
1	C	39	ASN
1	C	87	TYR
1	C	151	ASN
1	C	195	TYR
1	D	19	ASN
1	D	38	LEU
1	D	87	TYR
1	D	151	ASN
1	D	183	LYS
1	D	195	TYR

Some sidechains can be flipped to improve hydrogen bonding and reduce clashes. All (39) such sidechains are listed below:

Mol	Chain	Res	Type
1	A	19	ASN
1	A	20	ASN
1	A	45	HIS
1	A	62	ASN
1	A	64	GLN
1	A	138	ASN
1	A	142	GLN
1	A	151	ASN
1	A	155	GLN
1	B	19	ASN
1	B	20	ASN
1	B	39	ASN
1	B	45	HIS
1	B	62	ASN
1	B	69	GLN
1	B	138	ASN
1	B	142	GLN
1	B	151	ASN
1	B	155	GLN
1	B	162	GLN
1	B	186	ASN
1	B	218	ASN
1	C	19	ASN

Continued on next page...

Continued from previous page...

Mol	Chain	Res	Type
1	C	20	ASN
1	C	39	ASN
1	C	45	HIS
1	C	62	ASN
1	C	69	GLN
1	C	151	ASN
1	D	13	ASN
1	D	19	ASN
1	D	20	ASN
1	D	39	ASN
1	D	45	HIS
1	D	62	ASN
1	D	64	GLN
1	D	69	GLN
1	D	151	ASN
1	D	155	GLN

5.3.3 RNA ⓘ

There are no RNA molecules in this entry.

5.4 Non-standard residues in protein, DNA, RNA chains ⓘ

4 non-standard protein/DNA/RNA residues are modelled in this entry.

In the following table, the Counts columns list the number of bonds (or angles) for which Mogul statistics could be retrieved, the number of bonds (or angles) that are observed in the model and the number of bonds (or angles) that are defined in the Chemical Component Dictionary. The Link column lists molecule types, if any, to which the group is linked. The Z score for a bond length (or angle) is the number of standard deviations the observed value is removed from the expected value. A bond length (or angle) with $|Z| > 2$ is considered an outlier worth inspection. RMSZ is the root-mean-square of all Z scores of the bond lengths (or angles).

Mol	Type	Chain	Res	Link	Bond lengths			Bond angles		
					Counts	RMSZ	$\# Z > 2$	Counts	RMSZ	$\# Z > 2$
1	PCA	D	1	1	7,8,9	1.93	2 (28%)	9,10,12	1.90	4 (44%)
1	PCA	C	1	1	7,8,9	1.91	2 (28%)	9,10,12	1.58	2 (22%)
1	PCA	B	1	1	7,8,9	1.92	2 (28%)	9,10,12	1.60	3 (33%)
1	PCA	A	1	1	7,8,9	1.67	1 (14%)	9,10,12	1.82	4 (44%)

In the following table, the Chirals column lists the number of chiral outliers, the number of chiral

centers analysed, the number of these observed in the model and the number defined in the Chemical Component Dictionary. Similar counts are reported in the Torsion and Rings columns. '-' means no outliers of that kind were identified.

Mol	Type	Chain	Res	Link	Chirals	Torsions	Rings
1	PCA	D	1	1	-	0/0/11/13	0/1/1/1
1	PCA	C	1	1	-	0/0/11/13	0/1/1/1
1	PCA	B	1	1	-	0/0/11/13	0/1/1/1
1	PCA	A	1	1	-	0/0/11/13	0/1/1/1

All (7) bond length outliers are listed below:

Mol	Chain	Res	Type	Atoms	Z	Observed(Å)	Ideal(Å)
1	D	1	PCA	CD-N	4.07	1.45	1.34
1	B	1	PCA	CD-N	3.95	1.44	1.34
1	A	1	PCA	CD-N	3.89	1.44	1.34
1	C	1	PCA	CD-N	3.76	1.44	1.34
1	C	1	PCA	CA-N	3.03	1.50	1.46
1	B	1	PCA	CA-N	2.88	1.49	1.46
1	D	1	PCA	CA-N	2.83	1.49	1.46

All (13) bond angle outliers are listed below:

Mol	Chain	Res	Type	Atoms	Z	Observed(°)	Ideal(°)
1	D	1	PCA	CA-N-CD	-3.07	103.05	113.58
1	A	1	PCA	CA-N-CD	-2.75	104.15	113.58
1	D	1	PCA	CB-CA-N	2.69	111.03	103.30
1	B	1	PCA	CA-N-CD	-2.42	105.29	113.58
1	D	1	PCA	CG-CD-N	2.37	114.53	108.39
1	C	1	PCA	CA-N-CD	-2.36	105.48	113.58
1	A	1	PCA	CB-CA-C	-2.33	109.50	112.70
1	B	1	PCA	O-C-CA	-2.24	118.92	124.78
1	C	1	PCA	CB-CA-N	2.18	109.55	103.30
1	A	1	PCA	CB-CA-N	2.18	109.55	103.30
1	D	1	PCA	OE-CD-CG	-2.14	123.02	126.76
1	B	1	PCA	CB-CA-N	2.12	109.38	103.30
1	A	1	PCA	CG-CD-N	2.07	113.76	108.39

There are no chirality outliers.

There are no torsion outliers.

There are no ring outliers.

No monomer is involved in short contacts.

5.5 Carbohydrates [i](#)

There are no monosaccharides in this entry.

5.6 Ligand geometry [i](#)

4 ligands are modelled in this entry.

In the following table, the Counts columns list the number of bonds (or angles) for which Mogul statistics could be retrieved, the number of bonds (or angles) that are observed in the model and the number of bonds (or angles) that are defined in the Chemical Component Dictionary. The Link column lists molecule types, if any, to which the group is linked. The Z score for a bond length (or angle) is the number of standard deviations the observed value is removed from the expected value. A bond length (or angle) with $|Z| > 2$ is considered an outlier worth inspection. RMSZ is the root-mean-square of all Z scores of the bond lengths (or angles).

Mol	Type	Chain	Res	Link	Bond lengths			Bond angles		
					Counts	RMSZ	$\# Z > 2$	Counts	RMSZ	$\# Z > 2$
2	NAG	A	1220	1	14,14,15	0.77	1 (7%)	17,19,21	1.58	2 (11%)
2	NAG	B	1220	1	14,14,15	0.74	0	17,19,21	1.27	1 (5%)
2	NAG	C	1220	1	14,14,15	0.51	0	17,19,21	0.91	1 (5%)
2	NAG	D	1220	1	14,14,15	0.65	0	17,19,21	1.08	2 (11%)

In the following table, the Chirals column lists the number of chiral outliers, the number of chiral centers analysed, the number of these observed in the model and the number defined in the Chemical Component Dictionary. Similar counts are reported in the Torsion and Rings columns. '-' means no outliers of that kind were identified.

Mol	Type	Chain	Res	Link	Chirals	Torsions	Rings
2	NAG	A	1220	1	-	2/6/23/26	0/1/1/1
2	NAG	B	1220	1	-	0/6/23/26	0/1/1/1
2	NAG	C	1220	1	-	0/6/23/26	0/1/1/1
2	NAG	D	1220	1	-	0/6/23/26	0/1/1/1

All (1) bond length outliers are listed below:

Mol	Chain	Res	Type	Atoms	Z	Observed(Å)	Ideal(Å)
2	A	1220	NAG	O5-C5	-2.04	1.39	1.43

All (6) bond angle outliers are listed below:

Mol	Chain	Res	Type	Atoms	Z	Observed(°)	Ideal(°)
2	A	1220	NAG	C1-O5-C5	4.36	118.11	112.19

Continued on next page...

Continued from previous page...

Mol	Chain	Res	Type	Atoms	Z	Observed(°)	Ideal(°)
2	D	1220	NAG	C1-C2-N2	2.32	114.45	110.49
2	B	1220	NAG	O5-C1-C2	-2.31	107.64	111.29
2	C	1220	NAG	C1-O5-C5	2.06	114.98	112.19
2	A	1220	NAG	C3-C4-C5	2.05	113.89	110.24
2	D	1220	NAG	C1-O5-C5	2.03	114.94	112.19

There are no chirality outliers.

All (2) torsion outliers are listed below:

Mol	Chain	Res	Type	Atoms
2	A	1220	NAG	O5-C5-C6-O6
2	A	1220	NAG	C4-C5-C6-O6

There are no ring outliers.

No monomer is involved in short contacts.

5.7 Other polymers [i](#)

There are no such residues in this entry.

5.8 Polymer linkage issues [i](#)

There are no chain breaks in this entry.

6 Fit of model and data ⓘ

6.1 Protein, DNA and RNA chains ⓘ

In the following table, the column labelled ‘#RSRZ> 2’ contains the number (and percentage) of RSRZ outliers, followed by percent RSRZ outliers for the chain as percentile scores relative to all X-ray entries and entries of similar resolution. The OWAB column contains the minimum, median, 95th percentile and maximum values of the occupancy-weighted average B-factor per residue. The column labelled ‘Q< 0.9’ lists the number of (and percentage) of residues with an average occupancy less than 0.9.

Mol	Chain	Analysed	<RSRZ>	#RSRZ>2	OWAB(Å ²)	Q<0.9
1	A	217/218 (99%)	0.36	4 (1%) 68 72	5, 10, 17, 24	0
1	B	217/218 (99%)	0.23	8 (3%) 41 46	4, 10, 17, 23	0
1	C	217/218 (99%)	0.38	11 (5%) 28 31	4, 10, 20, 26	0
1	D	217/218 (99%)	0.35	7 (3%) 47 52	4, 9, 18, 25	0
All	All	868/872 (99%)	0.33	30 (3%) 44 49	4, 10, 18, 26	0

All (30) RSRZ outliers are listed below:

Mol	Chain	Res	Type	RSRZ
1	C	39	ASN	5.3
1	D	13	ASN	5.3
1	D	39	ASN	5.3
1	C	111	TYR	4.0
1	B	39	ASN	4.0
1	D	69	GLN	3.4
1	B	126	ASP	3.3
1	C	107	ASN	3.3
1	C	69	GLN	3.1
1	D	41	ALA	3.1
1	A	39	ASN	3.0
1	C	110	THR	2.9
1	C	13	ASN	2.9
1	D	111	TYR	2.8
1	B	13	ASN	2.7
1	A	126	ASP	2.7
1	A	13	ASN	2.7
1	B	69	GLN	2.7
1	C	40	GLY	2.6
1	C	41	ALA	2.6
1	D	68	PRO	2.5

Continued on next page...

Continued from previous page...

Mol	Chain	Res	Type	RSRZ
1	D	40	GLY	2.4
1	B	25	SER	2.4
1	C	126	ASP	2.3
1	B	68	PRO	2.2
1	C	63	VAL	2.2
1	C	68	PRO	2.2
1	B	218	ASN	2.2
1	A	68	PRO	2.2
1	B	40	GLY	2.1

6.2 Non-standard residues in protein, DNA, RNA chains [i](#)

In the following table, the Atoms column lists the number of modelled atoms in the group and the number defined in the chemical component dictionary. The B-factors column lists the minimum, median, 95th percentile and maximum values of B factors of atoms in the group. The column labelled 'Q< 0.9' lists the number of atoms with occupancy less than 0.9.

Mol	Type	Chain	Res	Atoms	RSCC	RSR	B-factors(Å ²)	Q<0.9
1	PCA	C	1	8/9	0.92	0.11	10,11,13,16	0
1	PCA	A	1	8/9	0.92	0.11	13,14,15,17	0
1	PCA	B	1	8/9	0.93	0.13	13,14,15,18	0
1	PCA	D	1	8/9	0.93	0.14	13,14,15,17	0

6.3 Carbohydrates [i](#)

There are no monosaccharides in this entry.

6.4 Ligands [i](#)

In the following table, the Atoms column lists the number of modelled atoms in the group and the number defined in the chemical component dictionary. The B-factors column lists the minimum, median, 95th percentile and maximum values of B factors of atoms in the group. The column labelled 'Q< 0.9' lists the number of atoms with occupancy less than 0.9.

Mol	Type	Chain	Res	Atoms	RSCC	RSR	B-factors(Å ²)	Q<0.9
2	NAG	A	1220	14/15	0.84	0.14	11,15,19,22	0
2	NAG	B	1220	14/15	0.91	0.12	10,15,23,23	0
2	NAG	D	1220	14/15	0.92	0.10	8,12,16,17	0
2	NAG	C	1220	14/15	0.93	0.09	10,12,17,19	0

6.5 Other polymers [i](#)

There are no such residues in this entry.