



# Full wwPDB X-ray Structure Validation Report ⓘ

Jun 15, 2020 – 10:32 pm BST

PDB ID : 2OA1  
Title : Crystal Structure of RebH, a FAD-dependent halogenase from *Lechevalieria aerocolonigenes*, the L-Tryptophan with FAD complex  
Authors : Bitto, E.; Bingman, C.A.; Singh, S.; Phillips Jr., G.N.  
Deposited on : 2006-12-14  
Resolution : 2.15 Å(reported)

This is a Full wwPDB X-ray Structure Validation Report for a publicly released PDB entry.

We welcome your comments at [validation@mail.wwpdb.org](mailto:validation@mail.wwpdb.org)

A user guide is available at

<https://www.wwpdb.org/validation/2017/XrayValidationReportHelp>

with specific help available everywhere you see the ⓘ symbol.

---

The following versions of software and data (see [references ⓘ](#)) were used in the production of this report:

MolProbity : 4.02b-467  
Mogul : 1.8.5 (274361), CSD as541be (2020)  
Xtriage (Phenix) : 1.13  
EDS : 2.11  
buster-report : 1.1.7 (2018)  
Percentile statistics : 20191225.v01 (using entries in the PDB archive December 25th 2019)  
Refmac : 5.8.0158  
CCP4 : 7.0.044 (Gargrove)  
Ideal geometry (proteins) : Engh & Huber (2001)  
Ideal geometry (DNA, RNA) : Parkinson et al. (1996)  
Validation Pipeline (wwPDB-VP) : 2.11

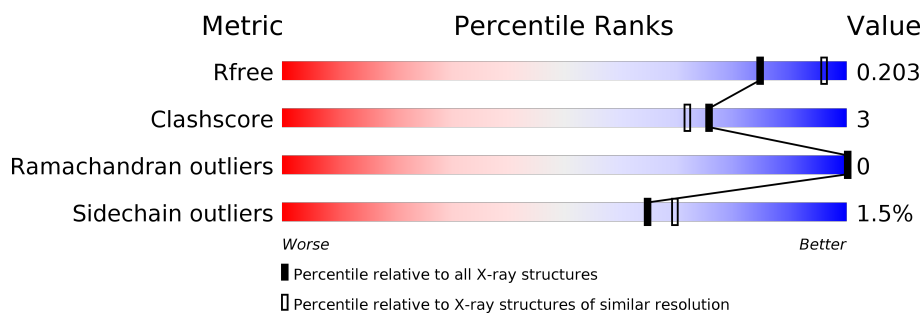
# 1 Overall quality at a glance

The following experimental techniques were used to determine the structure:

*X-RAY DIFFRACTION*

The reported resolution of this entry is 2.15 Å.

Percentile scores (ranging between 0-100) for global validation metrics of the entry are shown in the following graphic. The table shows the number of entries on which the scores are based.



Metric	Whole archive (#Entries)	Similar resolution (#Entries, resolution range(Å))
$R_{free}$	130704	1479 (2.16-2.16)
Clashscore	141614	1585 (2.16-2.16)
Ramachandran outliers	138981	1560 (2.16-2.16)
Sidechain outliers	138945	1559 (2.16-2.16)

The table below summarises the geometric issues observed across the polymeric chains and their fit to the electron density. The red, orange, yellow and green segments on the lower bar indicate the fraction of residues that contain outliers for  $\geq 3$ , 2, 1 and 0 types of geometric quality criteria respectively. A grey segment represents the fraction of residues that are not modelled. The numeric value for each fraction is indicated below the corresponding segment, with a dot representing fractions  $\leq 5\%$ .

Mol	Chain	Length	Quality of chain
1	A	550	 90% 6% •
1	B	550	 87% 8% • •

## 2 Entry composition

There are 6 unique types of molecules in this entry. The entry contains 9627 atoms, of which 0 are hydrogens and 0 are deuteriums.

In the tables below, the ZeroOcc column contains the number of atoms modelled with zero occupancy, the AltConf column contains the number of residues with at least one atom in alternate conformation and the Trace column contains the number of residues modelled with at most 2 atoms.

- Molecule 1 is a protein called Tryptophan halogenase.

Mol	Chain	Residues	Atoms					ZeroOcc	AltConf	Trace
1	A	527	Total	C	N	O	S	0	0	0
			4234	2691	737	787	19			
1	B	527	Total	C	N	O	S	0	0	0
			4234	2691	737	787	19			

There are 40 discrepancies between the modelled and reference sequences:

Chain	Residue	Modelled	Actual	Comment	Reference
A	-19	MET	-	EXPRESSION TAG	UNP Q8KHZ8
A	-18	GLY	-	EXPRESSION TAG	UNP Q8KHZ8
A	-17	SER	-	EXPRESSION TAG	UNP Q8KHZ8
A	-16	SER	-	EXPRESSION TAG	UNP Q8KHZ8
A	-15	HIS	-	EXPRESSION TAG	UNP Q8KHZ8
A	-14	HIS	-	EXPRESSION TAG	UNP Q8KHZ8
A	-13	HIS	-	EXPRESSION TAG	UNP Q8KHZ8
A	-12	HIS	-	EXPRESSION TAG	UNP Q8KHZ8
A	-11	HIS	-	EXPRESSION TAG	UNP Q8KHZ8
A	-10	HIS	-	EXPRESSION TAG	UNP Q8KHZ8
A	-9	SER	-	EXPRESSION TAG	UNP Q8KHZ8
A	-8	SER	-	EXPRESSION TAG	UNP Q8KHZ8
A	-7	GLY	-	EXPRESSION TAG	UNP Q8KHZ8
A	-6	LEU	-	EXPRESSION TAG	UNP Q8KHZ8
A	-5	VAL	-	EXPRESSION TAG	UNP Q8KHZ8
A	-4	PRO	-	EXPRESSION TAG	UNP Q8KHZ8
A	-3	ARG	-	EXPRESSION TAG	UNP Q8KHZ8
A	-2	GLY	-	EXPRESSION TAG	UNP Q8KHZ8
A	-1	SER	-	EXPRESSION TAG	UNP Q8KHZ8
A	0	HIS	-	EXPRESSION TAG	UNP Q8KHZ8
B	-19	MET	-	EXPRESSION TAG	UNP Q8KHZ8
B	-18	GLY	-	EXPRESSION TAG	UNP Q8KHZ8
B	-17	SER	-	EXPRESSION TAG	UNP Q8KHZ8
B	-16	SER	-	EXPRESSION TAG	UNP Q8KHZ8
B	-15	HIS	-	EXPRESSION TAG	UNP Q8KHZ8

*Continued on next page...*

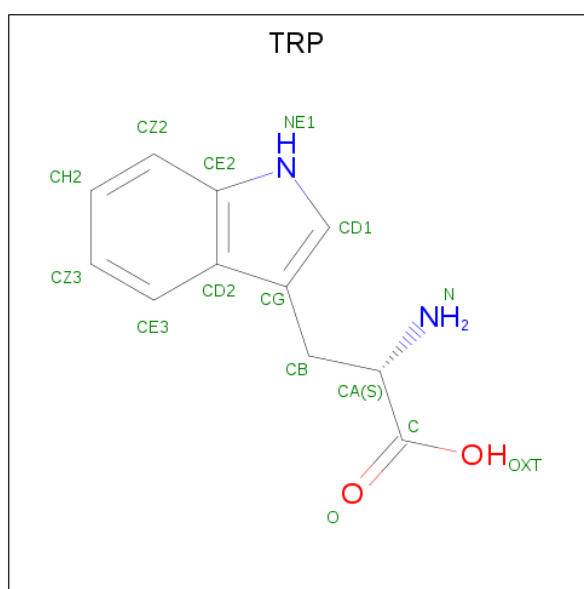
Continued from previous page...

Chain	Residue	Modelled	Actual	Comment	Reference
B	-14	HIS	-	EXPRESSION TAG	UNP Q8KHZ8
B	-13	HIS	-	EXPRESSION TAG	UNP Q8KHZ8
B	-12	HIS	-	EXPRESSION TAG	UNP Q8KHZ8
B	-11	HIS	-	EXPRESSION TAG	UNP Q8KHZ8
B	-10	HIS	-	EXPRESSION TAG	UNP Q8KHZ8
B	-9	SER	-	EXPRESSION TAG	UNP Q8KHZ8
B	-8	SER	-	EXPRESSION TAG	UNP Q8KHZ8
B	-7	GLY	-	EXPRESSION TAG	UNP Q8KHZ8
B	-6	LEU	-	EXPRESSION TAG	UNP Q8KHZ8
B	-5	VAL	-	EXPRESSION TAG	UNP Q8KHZ8
B	-4	PRO	-	EXPRESSION TAG	UNP Q8KHZ8
B	-3	ARG	-	EXPRESSION TAG	UNP Q8KHZ8
B	-2	GLY	-	EXPRESSION TAG	UNP Q8KHZ8
B	-1	SER	-	EXPRESSION TAG	UNP Q8KHZ8
B	0	HIS	-	EXPRESSION TAG	UNP Q8KHZ8

- Molecule 2 is CHLORIDE ION (three-letter code: CL) (formula: Cl).

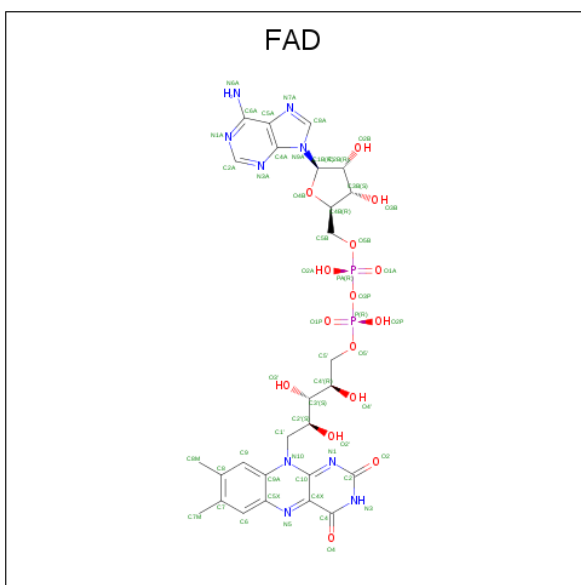
Mol	Chain	Residues	Atoms	ZeroOcc	AltConf
2	A	1	Total Cl 1 1	0	0

- Molecule 3 is TRYPTOPHAN (three-letter code: TRP) (formula: C<sub>11</sub>H<sub>12</sub>N<sub>2</sub>O<sub>2</sub>).



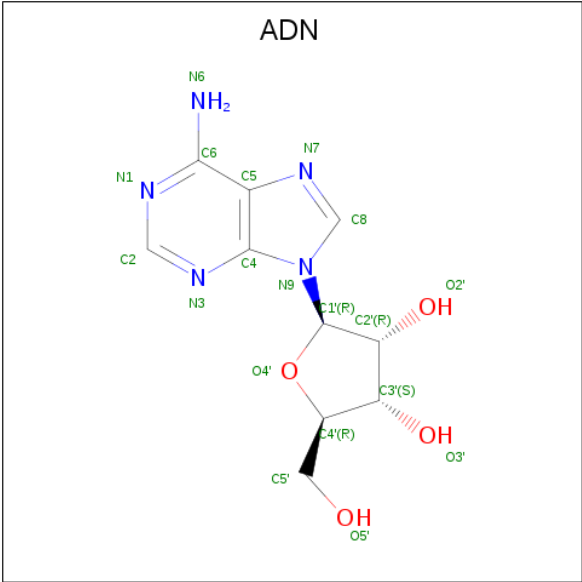
Mol	Chain	Residues	Atoms				ZeroOcc	AltConf
3	A	1	Total 15	C 11	N 2	O 2	0	0
3	A	1	Total 15	C 11	N 2	O 2	0	0

- Molecule 4 is FLAVIN-ADENINE DINUCLEOTIDE (three-letter code: FAD) (formula:  $\text{C}_{27}\text{H}_{33}\text{N}_9\text{O}_{15}\text{P}_2$ ).



Mol	Chain	Residues	Atoms					ZeroOcc	AltConf
4	A	1	Total	C	N	O	P	0	0
			53	27	9	15	2		

- Molecule 5 is ADENOSINE (three-letter code: ADN) (formula:  $C_{10}H_{13}N_5O_4$ ).



Mol	Chain	Residues	Atoms				ZeroOcc	AltConf
5	B	1	Total	C	N	O	0	0
			19	10	5	4		

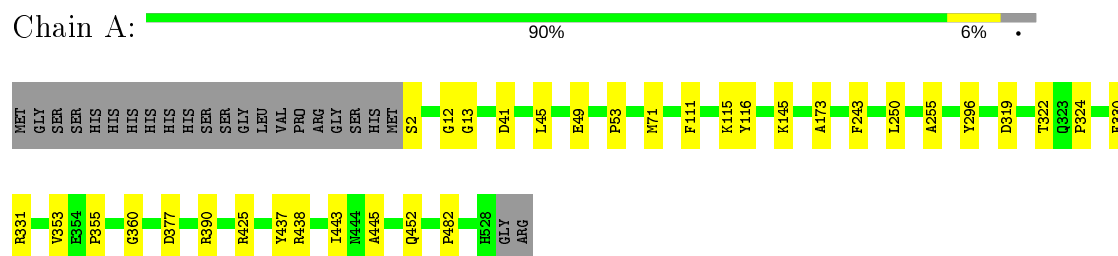
- Molecule 6 is water.

Mol	Chain	Residues	Atoms		ZeroOcc	AltConf
6	A	513	Total	O	0	0
			513	513		
6	B	543	Total	O	0	0
			543	543		

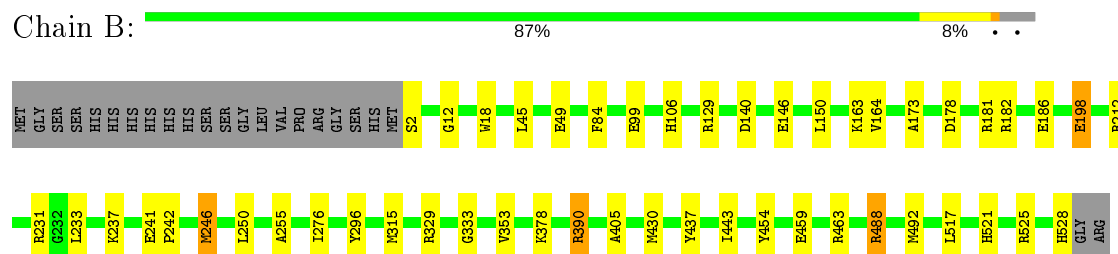
### 3 Residue-property plots

These plots are drawn for all protein, RNA and DNA chains in the entry. The first graphic for a chain summarises the proportions of the various outlier classes displayed in the second graphic. The second graphic shows the sequence view annotated by issues in geometry. Residues are color-coded according to the number of geometric quality criteria for which they contain at least one outlier: green = 0, yellow = 1, orange = 2 and red = 3 or more. Stretches of 2 or more consecutive residues without any outlier are shown as a green connector. Residues present in the sample, but not in the model, are shown in grey.

- Molecule 1: Tryptophan halogenase



- Molecule 1: Tryptophan halogenase



## 4 Data and refinement statistics

Property	Value	Source
Space group	P 62	Depositor
Cell constants a, b, c, $\alpha$ , $\beta$ , $\gamma$	114.49Å 114.49Å 231.94Å 90.00° 90.00° 120.00°	Depositor
Resolution (Å)	19.95 – 2.15 19.95 – 2.15	Depositor EDS
% Data completeness (in resolution range)	98.8 (19.95-2.15) 98.8 (19.95-2.15)	Depositor EDS
$R_{merge}$	0.10	Depositor
$R_{sym}$	(Not available)	Depositor
$\langle I/\sigma(I) \rangle$ <sup>1</sup>	3.57 (at 2.15Å)	Xtriage
Refinement program	REFMAC 5.2.0005	Depositor
R, $R_{free}$	0.152 , 0.194 0.161 , 0.203	Depositor DCC
$R_{free}$ test set	4630 reflections (5.04%)	wwPDB-VP
Wilson B-factor (Å <sup>2</sup> )	32.1	Xtriage
Anisotropy	0.027	Xtriage
Bulk solvent $k_{sol}$ (e/Å <sup>3</sup> ), $B_{sol}$ (Å <sup>2</sup> )	0.34 , 33.9	EDS
L-test for twinning <sup>2</sup>	$\langle  L  \rangle = 0.50$ , $\langle L^2 \rangle = 0.34$	Xtriage
Estimated twinning fraction	0.037 for h,-h-k,-l	Xtriage
$F_o, F_c$ correlation	0.95	EDS
Total number of atoms	9627	wwPDB-VP
Average B, all atoms (Å <sup>2</sup> )	38.0	wwPDB-VP

Xtriage's analysis on translational NCS is as follows: *The largest off-origin peak in the Patterson function is 3.33% of the height of the origin peak. No significant pseudotranslation is detected.*

<sup>1</sup>Intensities estimated from amplitudes.

<sup>2</sup>Theoretical values of  $\langle |L| \rangle$ ,  $\langle L^2 \rangle$  for acentric reflections are 0.5, 0.333 respectively for untwinned datasets, and 0.375, 0.2 for perfectly twinned datasets.

## 5 Model quality ⓘ

### 5.1 Standard geometry ⓘ

Bond lengths and bond angles in the following residue types are not validated in this section: ADN, FAD, CL

The Z score for a bond length (or angle) is the number of standard deviations the observed value is removed from the expected value. A bond length (or angle) with  $|Z| > 5$  is considered an outlier worth inspection. RMSZ is the root-mean-square of all Z scores of the bond lengths (or angles).

Mol	Chain	Bond lengths		Bond angles	
		RMSZ	$\# Z  > 5$	RMSZ	$\# Z  > 5$
1	A	0.71	0/4351	0.69	3/5905 (0.1%)
1	B	0.74	1/4351 (0.0%)	0.71	2/5905 (0.0%)
All	All	0.72	1/8702 (0.0%)	0.70	5/11810 (0.0%)

All (1) bond length outliers are listed below:

Mol	Chain	Res	Type	Atoms	Z	Observed(Å)	Ideal(Å)
1	B	99	GLU	CG-CD	5.27	1.59	1.51

All (5) bond angle outliers are listed below:

Mol	Chain	Res	Type	Atoms	Z	Observed(°)	Ideal(°)
1	B	140	ASP	CB-CG-OD1	6.53	124.17	118.30
1	A	377	ASP	CB-CG-OD1	5.78	123.50	118.30
1	A	319	ASP	CB-CG-OD1	5.44	123.20	118.30
1	A	330	PHE	CB-CA-C	-5.41	99.59	110.40
1	B	246	MET	CG-SD-CE	5.01	108.22	100.20

There are no chirality outliers.

There are no planarity outliers.

### 5.2 Too-close contacts ⓘ

In the following table, the Non-H and H(model) columns list the number of non-hydrogen atoms and hydrogen atoms in the chain respectively. The H(added) column lists the number of hydrogen atoms added and optimized by MolProbity. The Clashes column lists the number of clashes within the asymmetric unit, whereas Symm-Clashes lists symmetry related clashes.

Mol	Chain	Non-H	H(model)	H(added)	Clashes	Symm-Clashes
1	A	4234	0	4038	19	0
1	B	4234	0	4038	30	0
2	A	1	0	0	1	0
3	A	30	0	18	1	0
4	A	53	0	31	4	0
5	B	19	0	13	4	0
6	A	513	0	0	7	1
6	B	543	0	0	7	0
All	All	9627	0	8138	51	1

The all-atom clashscore is defined as the number of clashes found per 1000 atoms (including hydrogen atoms). The all-atom clashscore for this structure is 3.

All (51) close contacts within the same asymmetric unit are listed below, sorted by their clash magnitude.

Atom-1	Atom-2	Interatomic distance (Å)	Clash overlap (Å)
1:B:231:ARG:HH12	5:B:2005:ADN:H8	1.16	1.06
1:A:71:MET:HE3	6:A:2385:HOH:O	1.60	1.01
1:B:231:ARG:NH1	5:B:2005:ADN:H8	1.80	0.95
1:A:49:GLU:HG3	1:A:173:ALA:HB2	1.53	0.90
1:B:12:GLY:HA2	5:B:2005:ADN:H1'	1.58	0.85
1:B:49:GLU:HG3	1:B:173:ALA:HB2	1.59	0.84
1:B:231:ARG:NH1	5:B:2005:ADN:C8	2.52	0.72
1:A:13:GLY:O	6:A:2358:HOH:O	2.11	0.68
1:A:437:TYR:HB2	1:A:443:ILE:HD11	1.79	0.65
1:B:390:ARG:HD2	6:B:2274:HOH:O	1.96	0.64
1:A:12:GLY:HA2	4:A:2004:FAD:H1B	1.83	0.60
1:A:250:LEU:HD13	1:A:353:VAL:HG23	1.84	0.59
1:A:390:ARG:NH1	6:A:2468:HOH:O	2.36	0.59
3:A:2003:TRP:N	1:B:454:TYR:HH	2.00	0.59
1:B:437:TYR:HB2	1:B:443:ILE:HD11	1.83	0.58
1:B:198:GLU:OE1	1:B:212:ARG:NH2	2.37	0.58
4:A:2004:FAD:H5'1	6:A:2116:HOH:O	2.05	0.56
1:B:492:MET:HE2	6:B:2331:HOH:O	2.06	0.55
1:A:243:PHE:CE2	1:A:331:ARG:HG2	2.41	0.55
1:B:255:ALA:HA	1:B:296:TYR:O	2.09	0.53
1:B:378:LYS:NZ	6:B:2066:HOH:O	2.41	0.53
1:B:528:HIS:C	6:B:2324:HOH:O	2.47	0.53
1:A:45:LEU:HD11	1:A:324:PRO:HB2	1.90	0.52
1:A:360:GLY:HA3	4:A:2004:FAD:H1'2	1.92	0.52
1:A:425:ARG:HD3	6:A:2307:HOH:O	2.10	0.51
1:B:129:ARG:HD2	6:B:2299:HOH:O	2.11	0.50

*Continued on next page...*

Continued from previous page...

Atom-1	Atom-2	Interatomic distance (Å)	Clash overlap (Å)
1:A:243:PHE:CZ	1:A:331:ARG:HG2	2.49	0.48
1:B:84:PHE:O	1:B:106:HIS:HA	2.14	0.47
1:B:18:TRP:CZ2	1:B:181:ARG:HG3	2.50	0.47
1:B:488:ARG:O	1:B:492:MET:HE3	2.13	0.47
1:A:71:MET:HG2	6:A:2385:HOH:O	2.14	0.47
4:A:2004:FAD:H51A	6:A:2481:HOH:O	2.15	0.46
1:A:49:GLU:CG	1:A:173:ALA:HB2	2.37	0.46
1:B:45:LEU:HD23	6:B:2514:HOH:O	2.14	0.46
1:A:255:ALA:HA	1:A:296:TYR:O	2.16	0.46
1:B:146:GLU:O	1:B:150:LEU:HG	2.16	0.46
1:B:250:LEU:HD13	1:B:353:VAL:HG23	1.99	0.45
1:B:521:HIS:NE2	1:B:525:ARG:HD2	2.32	0.44
1:A:438:ARG:HA	1:A:482:PRO:HA	2.00	0.44
1:A:355:PRO:HA	2:A:2001:CL:CL	2.56	0.43
1:B:178:ASP:OD2	1:B:182:ARG:NH1	2.52	0.43
1:B:163:LYS:HE3	6:B:2258:HOH:O	2.19	0.42
1:B:241:GLU:HA	1:B:242:PRO:HD3	1.94	0.42
1:B:276:ILE:HG21	1:B:315:MET:HE3	2.02	0.42
1:B:164:VAL:HG21	1:B:517:LEU:HD11	2.00	0.42
1:B:459:GLU:O	1:B:463:ARG:HG3	2.20	0.42
1:A:116:TYR:OH	1:A:445:ALA:HB1	2.20	0.41
1:B:246:MET:HG3	1:B:333:GLY:HA2	2.02	0.41
1:B:405:ALA:HB2	1:B:430:MET:CE	2.50	0.41
1:B:182:ARG:O	1:B:186:GLU:HB2	2.21	0.41
1:A:53:PRO:HD3	1:A:111:PHE:CE1	2.55	0.41

All (1) symmetry-related close contacts are listed below. The label for Atom-2 includes the symmetry operator and encoded unit-cell translations to be applied.

Atom-1	Atom-2	Interatomic distance (Å)	Clash overlap (Å)
6:A:2207:HOH:O	6:A:2207:HOH:O[4_565]	2.03	0.17

## 5.3 Torsion angles [i](#)

### 5.3.1 Protein backbone [i](#)

In the following table, the Percentiles column shows the percent Ramachandran outliers of the chain as a percentile score with respect to all X-ray entries followed by that with respect to entries of similar resolution.

The Analysed column shows the number of residues for which the backbone conformation was analysed, and the total number of residues.

Mol	Chain	Analysed	Favoured	Allowed	Outliers	Percentiles	
1	A	525/550 (96%)	514 (98%)	11 (2%)	0	100	100
1	B	525/550 (96%)	513 (98%)	12 (2%)	0	100	100
All	All	1050/1100 (96%)	1027 (98%)	23 (2%)	0	100	100

There are no Ramachandran outliers to report.

### 5.3.2 Protein sidechains ⓘ

In the following table, the Percentiles column shows the percent sidechain outliers of the chain as a percentile score with respect to all X-ray entries followed by that with respect to entries of similar resolution.

The Analysed column shows the number of residues for which the sidechain conformation was analysed, and the total number of residues.

Mol	Chain	Analysed	Rotameric	Outliers	Percentiles	
1	A	444/463 (96%)	438 (99%)	6 (1%)	67	72
1	B	444/463 (96%)	437 (98%)	7 (2%)	62	67
All	All	888/926 (96%)	875 (98%)	13 (2%)	65	69

All (13) residues with a non-rotameric sidechain are listed below:

Mol	Chain	Res	Type
1	A	2	SER
1	A	41	ASP
1	A	115	LYS
1	A	145	LYS
1	A	322	THR
1	A	452	GLN
1	B	2	SER
1	B	198	GLU
1	B	233	LEU
1	B	237	LYS
1	B	329	ARG
1	B	390	ARG
1	B	488	ARG

Some sidechains can be flipped to improve hydrogen bonding and reduce clashes. All (4) such sidechains are listed below:

Mol	Chain	Res	Type
1	A	267	ASN
1	A	452	GLN
1	A	494	GLN
1	B	29	GLN

### 5.3.3 RNA ⓘ

There are no RNA molecules in this entry.

## 5.4 Non-standard residues in protein, DNA, RNA chains ⓘ

There are no non-standard protein/DNA/RNA residues in this entry.

## 5.5 Carbohydrates ⓘ

There are no carbohydrates in this entry.

## 5.6 Ligand geometry ⓘ

Of 5 ligands modelled in this entry, 1 is monoatomic - leaving 4 for Mogul analysis.

In the following table, the Counts columns list the number of bonds (or angles) for which Mogul statistics could be retrieved, the number of bonds (or angles) that are observed in the model and the number of bonds (or angles) that are defined in the Chemical Component Dictionary. The Link column lists molecule types, if any, to which the group is linked. The Z score for a bond length (or angle) is the number of standard deviations the observed value is removed from the expected value. A bond length (or angle) with  $|Z| > 2$  is considered an outlier worth inspection. RMSZ is the root-mean-square of all Z scores of the bond lengths (or angles).

Mol	Type	Chain	Res	Link	Bond lengths			Bond angles		
					Counts	RMSZ	# Z  > 2	Counts	RMSZ	# Z  > 2
5	ADN	B	2005	-	18,21,21	1.09	1 (5%)	18,31,31	1.69	5 (27%)
4	FAD	A	2004	-	51,58,58	1.67	8 (15%)	60,89,89	1.98	12 (20%)

In the following table, the Chirals column lists the number of chiral outliers, the number of chiral centers analysed, the number of these observed in the model and the number defined in the Chemical Component Dictionary. Similar counts are reported in the Torsion and Rings columns. '-' means no outliers of that kind were identified.

Mol	Type	Chain	Res	Link	Chirals	Torsions	Rings
5	ADN	B	2005	-	-	2/2/22/22	0/3/3/3

*Continued on next page...*

*Continued from previous page...*

Mol	Type	Chain	Res	Link	Chirals	Torsions	Rings
4	FAD	A	2004	-	-	12/30/50/50	0/6/6/6

All (9) bond length outliers are listed below:

Mol	Chain	Res	Type	Atoms	Z	Observed(Å)	Ideal(Å)
4	A	2004	FAD	C4X-N5	5.25	1.40	1.33
4	A	2004	FAD	C10-N1	4.97	1.39	1.33
4	A	2004	FAD	C2A-N3A	4.11	1.38	1.32
4	A	2004	FAD	C1'-N10	3.70	1.52	1.48
4	A	2004	FAD	C4-N3	3.62	1.39	1.33
4	A	2004	FAD	C4X-C10	3.26	1.42	1.38
5	B	2005	ADN	C5-C4	2.61	1.47	1.40
4	A	2004	FAD	C2A-N1A	2.59	1.38	1.33
4	A	2004	FAD	C9A-N10	2.11	1.41	1.38

All (17) bond angle outliers are listed below:

Mol	Chain	Res	Type	Atoms	Z	Observed(°)	Ideal(°)
4	A	2004	FAD	C4-N3-C2	9.30	122.99	115.14
4	A	2004	FAD	N3A-C2A-N1A	-5.81	119.59	128.68
4	A	2004	FAD	C4X-N5-C5X	4.20	120.97	116.77
5	B	2005	ADN	O4'-C1'-C2'	-3.67	101.57	106.93
4	A	2004	FAD	C4X-C4-N3	-3.52	118.62	123.43
4	A	2004	FAD	C10-C4X-N5	-3.09	119.12	121.26
5	B	2005	ADN	N3-C2-N1	-3.03	123.94	128.68
4	A	2004	FAD	C5X-C9A-N10	2.97	119.86	117.72
5	B	2005	ADN	O3'-C3'-C2'	-2.93	102.34	111.82
4	A	2004	FAD	C4-C4X-N5	2.76	121.75	118.60
4	A	2004	FAD	C1B-N9A-C4A	-2.54	122.19	126.64
4	A	2004	FAD	C4A-C5A-N7A	-2.42	106.88	109.40
4	A	2004	FAD	C1'-N10-C10	2.32	120.48	118.41
5	B	2005	ADN	C2-N1-C6	2.29	122.67	118.75
5	B	2005	ADN	C4-C5-N7	-2.21	107.09	109.40
4	A	2004	FAD	O3'-C3'-C2'	2.11	113.90	108.81
4	A	2004	FAD	C1'-N10-C9A	2.01	119.88	118.29

There are no chirality outliers.

All (14) torsion outliers are listed below:

Mol	Chain	Res	Type	Atoms
4	A	2004	FAD	C2'-C3'-C4'-O4'

*Continued on next page...*

*Continued from previous page...*

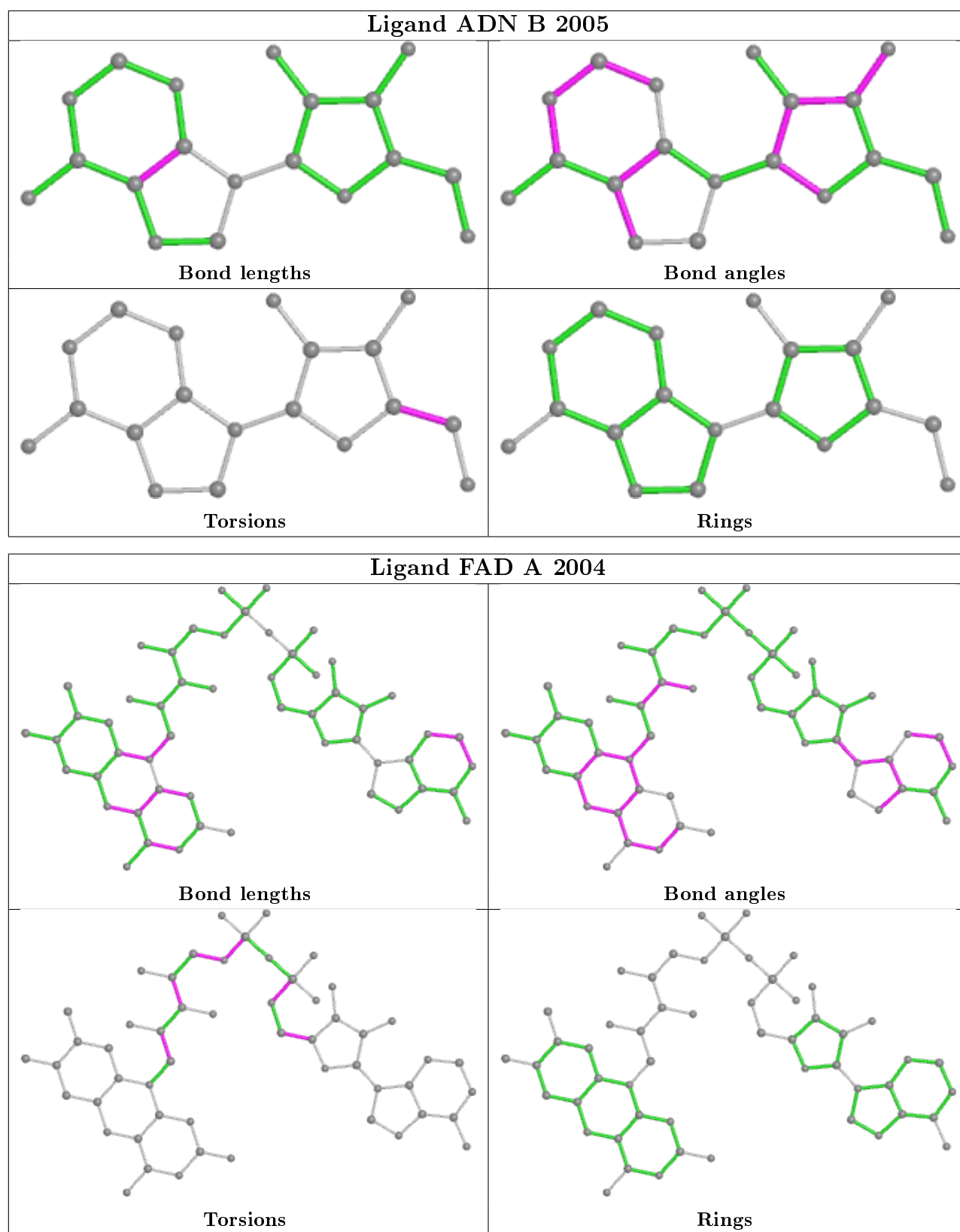
Mol	Chain	Res	Type	Atoms
4	A	2004	FAD	O3'-C3'-C4'-O4'
4	A	2004	FAD	C5'-O5'-P-O1P
5	B	2005	ADN	O4'-C4'-C5'-O5'
5	B	2005	ADN	C3'-C4'-C5'-O5'
4	A	2004	FAD	O3'-C3'-C4'-C5'
4	A	2004	FAD	C2'-C3'-C4'-C5'
4	A	2004	FAD	O4B-C4B-C5B-O5B
4	A	2004	FAD	C5'-O5'-P-O3P
4	A	2004	FAD	C5'-O5'-P-O2P
4	A	2004	FAD	N10-C1'-C2'-O2'
4	A	2004	FAD	C3B-C4B-C5B-O5B
4	A	2004	FAD	C5B-O5B-PA-O1A
4	A	2004	FAD	C4'-C5'-O5'-P

There are no ring outliers.

2 monomers are involved in 8 short contacts:

Mol	Chain	Res	Type	Clashes	Symm-Clashes
5	B	2005	ADN	4	0
4	A	2004	FAD	4	0

The following is a two-dimensional graphical depiction of Mogul quality analysis of bond lengths, bond angles, torsion angles, and ring geometry for all instances of the Ligand of Interest. In addition, ligands with molecular weight > 250 and outliers as shown on the validation Tables will also be included. For torsion angles, if less than 5% of the Mogul distribution of torsion angles is within 10 degrees of the torsion angle in question, then that torsion angle is considered an outlier. Any bond that is central to one or more torsion angles identified as an outlier by Mogul will be highlighted in the graph. For rings, the root-mean-square deviation (RMSD) between the ring in question and similar rings identified by Mogul is calculated over all ring torsion angles. If the average RMSD is greater than 60 degrees and the minimal RMSD between the ring in question and any Mogul-identified rings is also greater than 60 degrees, then that ring is considered an outlier. The outliers are highlighted in purple. The color gray indicates Mogul did not find sufficient equivalents in the CSD to analyse the geometry.



## 5.7 Other polymers ⓘ

There are no such residues in this entry.

## 5.8 Polymer linkage issues ⓘ

There are no chain breaks in this entry.

## 6 Fit of model and data [i](#)

### 6.1 Protein, DNA and RNA chains [i](#)

Unable to reproduce the depositors R factor - this section is therefore empty.

### 6.2 Non-standard residues in protein, DNA, RNA chains [i](#)

Unable to reproduce the depositors R factor - this section is therefore empty.

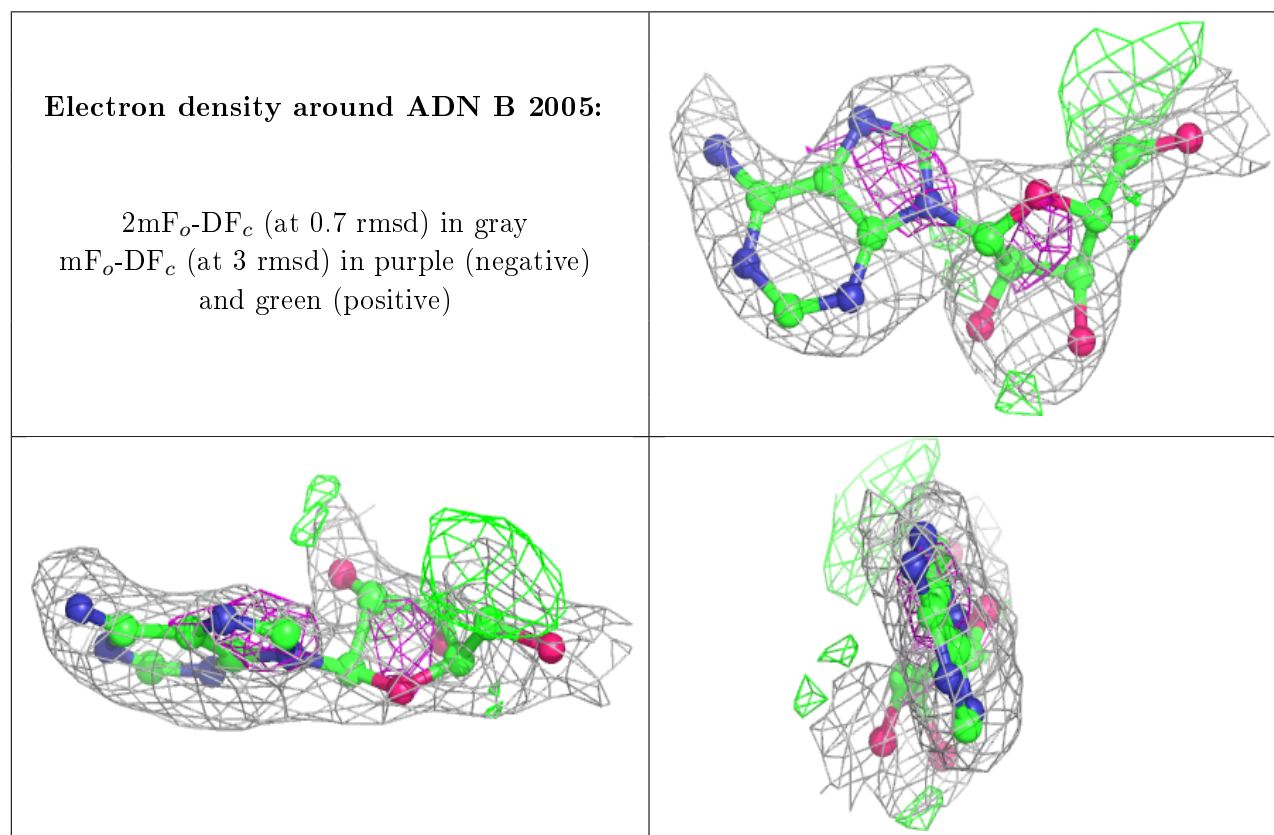
### 6.3 Carbohydrates [i](#)

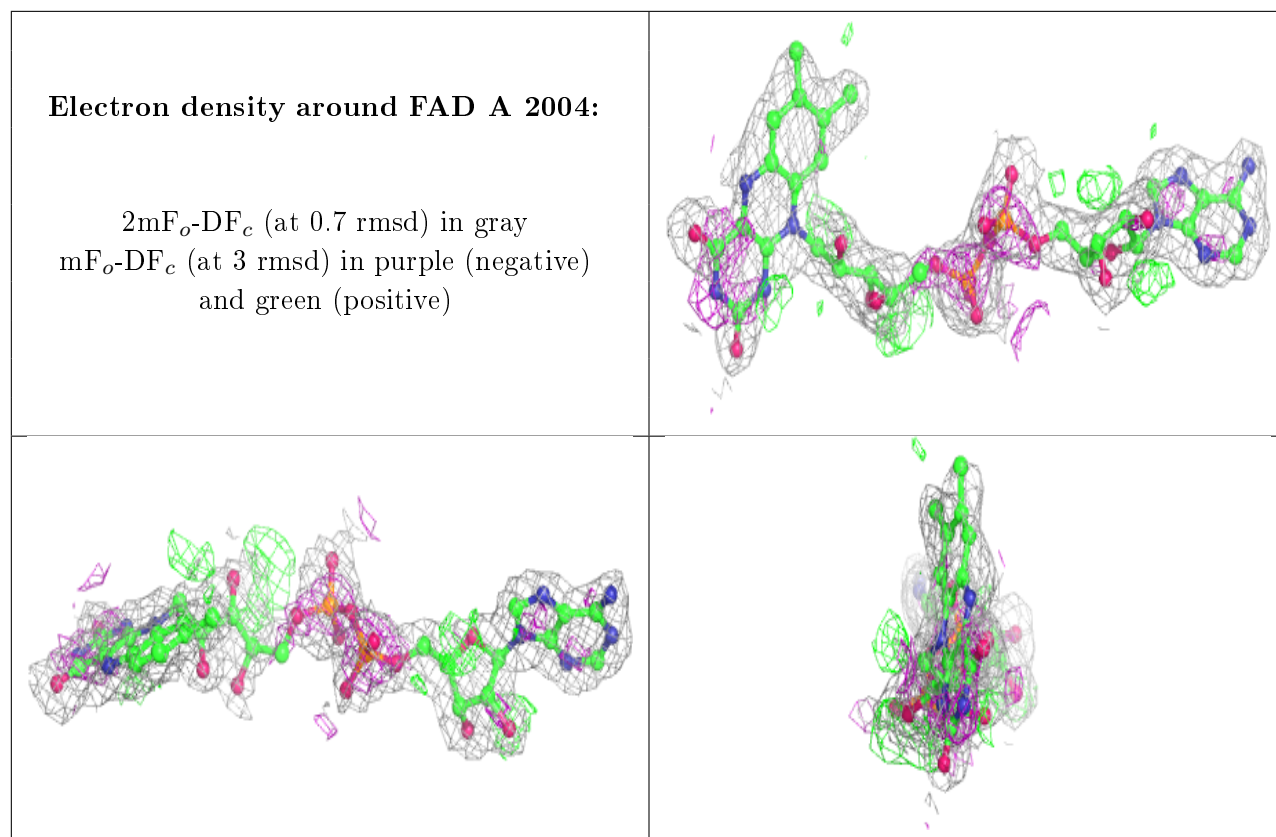
Unable to reproduce the depositors R factor - this section is therefore empty.

### 6.4 Ligands [i](#)

Unable to reproduce the depositors R factor - this section is therefore empty.

The following is a graphical depiction of the model fit to experimental electron density of all instances of the Ligand of Interest. In addition, ligands with molecular weight > 250 and outliers as shown on the geometry validation Tables will also be included. Each fit is shown from different orientation to approximate a three-dimensional view.





## 6.5 Other polymers [i](#)

Unable to reproduce the depositors R factor - this section is therefore empty.