



Full wwPDB X-ray Structure Validation Report ⓘ

May 15, 2020 – 04:11 am BST

PDB ID : 6OAAQ
Title : Crystal structure of a dual sensor histidine kinase in BeF3- bound state
Authors : Heewhan, S.; Zhong, R.; Xiaoli, Z.; Sepalika, B.; Xiaojing, Y.
Deposited on : 2019-03-18
Resolution : 2.54 Å(reported)

This is a Full wwPDB X-ray Structure Validation Report for a publicly released PDB entry.

We welcome your comments at validation@mail.wwpdb.org

A user guide is available at

<https://www.wwpdb.org/validation/2017/XrayValidationReportHelp>

with specific help available everywhere you see the ⓘ symbol.

The following versions of software and data (see [references ⓘ](#)) were used in the production of this report:

MolProbity : 4.02b-467
Mogul : 1.8.5 (274361), CSD as541be (2020)
Xtriage (Phenix) : 1.13
EDS : 2.11
buster-report : 1.1.7 (2018)
Percentile statistics : 20191225.v01 (using entries in the PDB archive December 25th 2019)
Refmac : 5.8.0158
CCP4 : 7.0.044 (Gargrove)
Ideal geometry (proteins) : Engh & Huber (2001)
Ideal geometry (DNA, RNA) : Parkinson et al. (1996)
Validation Pipeline (wwPDB-VP) : 2.11

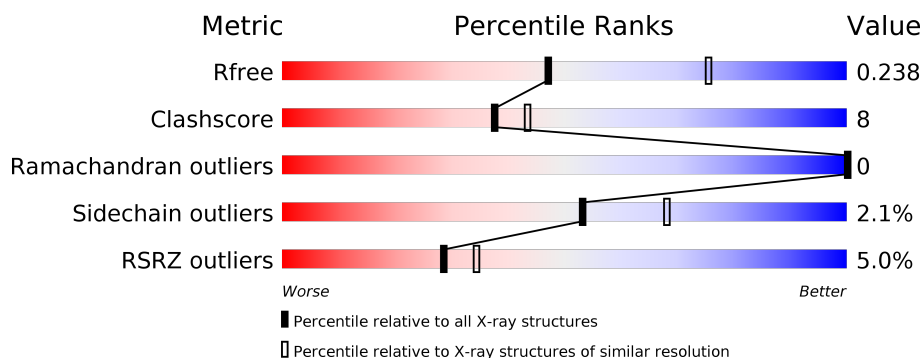
1 Overall quality at a glance ⓘ

The following experimental techniques were used to determine the structure:

X-RAY DIFFRACTION

The reported resolution of this entry is 2.54 Å.

Percentile scores (ranging between 0-100) for global validation metrics of the entry are shown in the following graphic. The table shows the number of entries on which the scores are based.



Metric	Whole archive (#Entries)	Similar resolution (#Entries, resolution range(Å))
R_{free}	130704	1284 (2.56-2.52)
Clashscore	141614	1332 (2.56-2.52)
Ramachandran outliers	138981	1315 (2.56-2.52)
Sidechain outliers	138945	1315 (2.56-2.52)
RSRZ outliers	127900	1272 (2.56-2.52)

The table below summarises the geometric issues observed across the polymeric chains and their fit to the electron density. The red, orange, yellow and green segments on the lower bar indicate the fraction of residues that contain outliers for ≥ 3 , 2, 1 and 0 types of geometric quality criteria respectively. A grey segment represents the fraction of residues that are not modelled. The numeric value for each fraction is indicated below the corresponding segment, with a dot representing fractions $\leq 5\%$. The upper red bar (where present) indicates the fraction of residues that have poor fit to the electron density. The numeric value is given above the bar.

Mol	Chain	Length	Quality of chain
1	A	316	<div> <div>5%</div> <div> <div></div> <div>84%</div> <div>11%</div> <div>• •</div> </div> </div>
1	B	316	<div> <div>5%</div> <div> <div></div> <div>82%</div> <div>12%</div> <div>• 5%</div> </div> </div>

2 Entry composition [i](#)

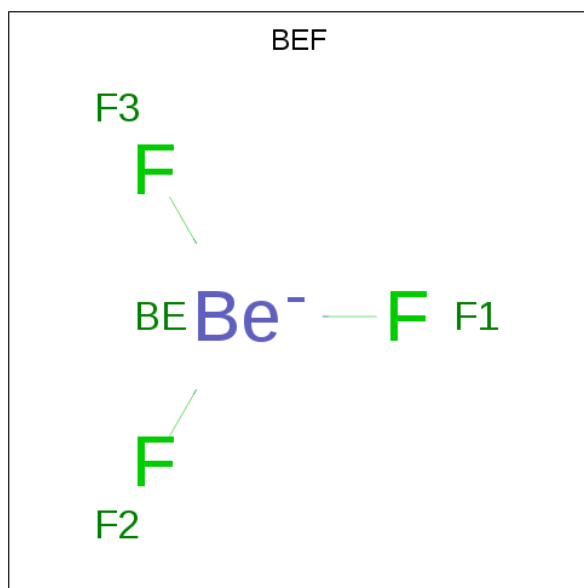
There are 5 unique types of molecules in this entry. The entry contains 5016 atoms, of which 0 are hydrogens and 0 are deuteriums.

In the tables below, the ZeroOcc column contains the number of atoms modelled with zero occupancy, the AltConf column contains the number of residues with at least one atom in alternate conformation and the Trace column contains the number of residues modelled with at most 2 atoms.

- Molecule 1 is a protein called Dual sensor histidine kinase.

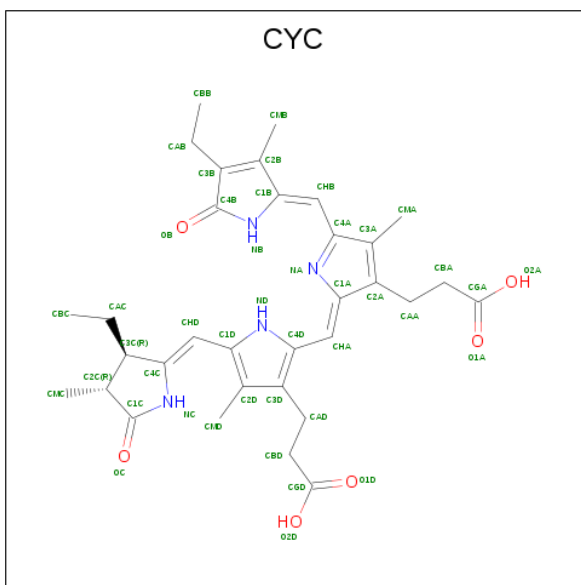
Mol	Chain	Residues	Atoms					ZeroOcc	AltConf	Trace
1	A	302	Total	C	N	O	S	0	1	0
			2441	1545	433	458	5			
1	B	301	Total	C	N	O	S	0	0	0
			2429	1540	428	456	5			

- Molecule 2 is BERYLLIUM TRIFLUORIDE ION (three-letter code: BEF) (formula: BeF₃) (labeled as "Ligand of Interest" by author).



Mol	Chain	Residues	Atoms			ZeroOcc	AltConf
2	A	1	Total	Be	F	0	0
			4	1	3		

- Molecule 3 is PHYCOCYANOBILIN (three-letter code: CYC) (formula: C₃₃H₄₀N₄O₆).



Mol	Chain	Residues	Atoms				ZeroOcc	AltConf
3	A	1	Total 43	C 33	N 4	O 6	0	0
3	B	1	Total 43	C 33	N 4	O 6	0	0

- Molecule 4 is MAGNESIUM ION (three-letter code: MG) (formula: Mg).

Mol	Chain	Residues	Atoms	ZeroOcc	AltConf
4	B	3	Total Mg 3 3	0	0
4	A	1	Total Mg 1 1	0	0

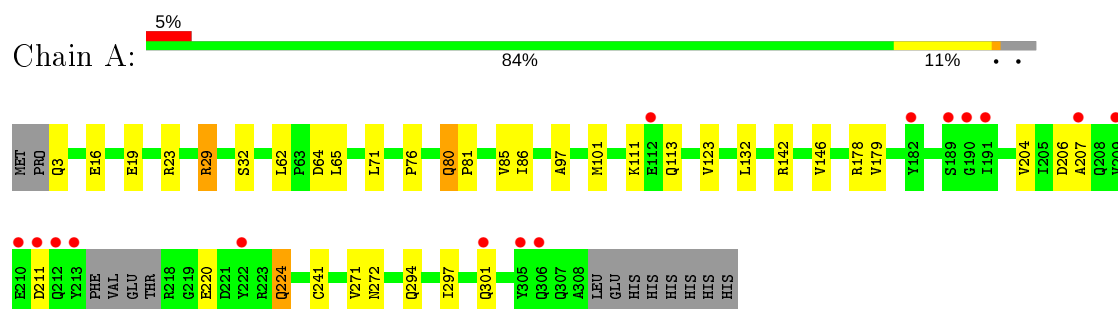
- Molecule 5 is water.

Mol	Chain	Residues	Atoms	ZeroOcc	AltConf
5	A	24	Total O 24 24	0	0
5	B	28	Total O 28 28	0	0

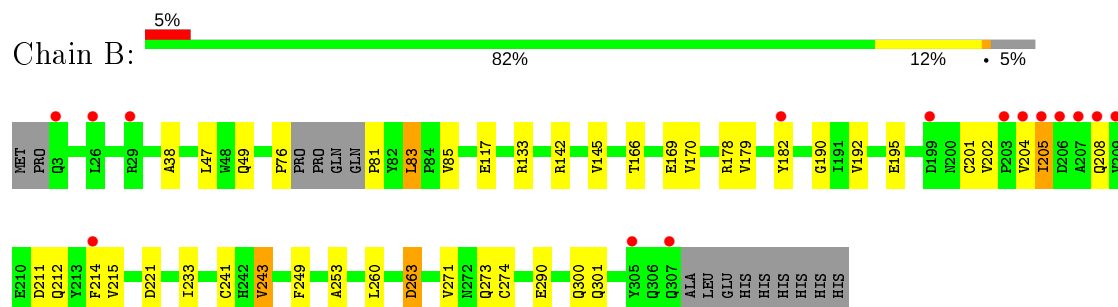
3 Residue-property plots [i](#)

These plots are drawn for all protein, RNA and DNA chains in the entry. The first graphic for a chain summarises the proportions of the various outlier classes displayed in the second graphic. The second graphic shows the sequence view annotated by issues in geometry and electron density. Residues are color-coded according to the number of geometric quality criteria for which they contain at least one outlier: green = 0, yellow = 1, orange = 2 and red = 3 or more. A red dot above a residue indicates a poor fit to the electron density ($RSRZ > 2$). Stretches of 2 or more consecutive residues without any outlier are shown as a green connector. Residues present in the sample, but not in the model, are shown in grey.

- Molecule 1: Dual sensor histidine kinase



- Molecule 1: Dual sensor histidine kinase



4 Data and refinement statistics

Property	Value	Source
Space group	P 43 21 2	Depositor
Cell constants a, b, c, α , β , γ	73.53 Å 73.53 Å 253.59 Å 90.00° 90.00° 90.00°	Depositor
Resolution (Å)	44.28 – 2.54 44.28 – 2.54	Depositor EDS
% Data completeness (in resolution range)	87.4 (44.28-2.54) 87.4 (44.28-2.54)	Depositor EDS
R_{merge}	0.08	Depositor
R_{sym}	(Not available)	Depositor
$\langle I/\sigma(I) \rangle$ ¹	1.98 (at 2.54 Å)	Xtriage
Refinement program	PHENIX 1.9_1692	Depositor
R, R_{free}	0.191 , 0.241 0.196 , 0.238	Depositor DCC
R_{free} test set	1914 reflections (9.14%)	wwPDB-VP
Wilson B-factor (Å ²)	65.9	Xtriage
Anisotropy	0.384	Xtriage
Bulk solvent k_{sol} (e/Å ³), B_{sol} (Å ²)	0.32 , 53.8	EDS
L-test for twinning ²	$\langle L \rangle = 0.49$, $\langle L^2 \rangle = 0.32$	Xtriage
Estimated twinning fraction	No twinning to report.	Xtriage
F_o, F_c correlation	0.96	EDS
Total number of atoms	5016	wwPDB-VP
Average B, all atoms (Å ²)	84.0	wwPDB-VP

Xtriage's analysis on translational NCS is as follows: *The largest off-origin peak in the Patterson function is 3.85% of the height of the origin peak. No significant pseudotranslation is detected.*

¹Intensities estimated from amplitudes.

²Theoretical values of $\langle |L| \rangle$, $\langle L^2 \rangle$ for acentric reflections are 0.5, 0.333 respectively for untwinned datasets, and 0.375, 0.2 for perfectly twinned datasets.

5 Model quality

5.1 Standard geometry

Bond lengths and bond angles in the following residue types are not validated in this section: CYC, MG, BEF

The Z score for a bond length (or angle) is the number of standard deviations the observed value is removed from the expected value. A bond length (or angle) with $|Z| > 5$ is considered an outlier worth inspection. RMSZ is the root-mean-square of all Z scores of the bond lengths (or angles).

Mol	Chain	Bond lengths		Bond angles	
		RMSZ	# Z >5	RMSZ	# Z >5
1	A	0.31	0/2486	0.43	0/3384
1	B	0.33	0/2473	0.46	0/3364
All	All	0.32	0/4959	0.44	0/6748

There are no bond length outliers.

There are no bond angle outliers.

There are no chirality outliers.

There are no planarity outliers.

5.2 Too-close contacts

In the following table, the Non-H and H(model) columns list the number of non-hydrogen atoms and hydrogen atoms in the chain respectively. The H(added) column lists the number of hydrogen atoms added and optimized by MolProbity. The Clashes column lists the number of clashes within the asymmetric unit, whereas Symm-Clashes lists symmetry related clashes.

Mol	Chain	Non-H	H(model)	H(added)	Clashes	Symm-Clashes
1	A	2441	0	2432	34	0
1	B	2429	0	2424	38	0
2	A	4	0	0	1	0
3	A	43	0	36	13	0
3	B	43	0	37	15	0
4	A	1	0	0	0	0
4	B	3	0	0	0	0
5	A	24	0	0	0	0
5	B	28	0	0	0	0
All	All	5016	0	4929	76	0

The all-atom clashscore is defined as the number of clashes found per 1000 atoms (including

hydrogen atoms). The all-atom clashscore for this structure is 8.

All (76) close contacts within the same asymmetric unit are listed below, sorted by their clash magnitude.

Atom-1	Atom-2	Interatomic distance (Å)	Clash overlap (Å)
1:B:241:CYS:SG	3:B:401:CYC:HAC2	1.22	1.70
1:A:241:CYS:SG	3:A:402:CYC:HAC2	1.45	1.53
1:B:201:CYS:SG	1:B:274:CYS:SG	1.44	1.44
1:B:201:CYS:SG	1:B:274:CYS:CB	2.06	1.42
1:A:241:CYS:SG	3:A:402:CYC:CAC	2.10	1.40
1:B:241:CYS:SG	3:B:401:CYC:CAC	2.08	1.39
1:B:201:CYS:SG	1:B:274:CYS:HB2	1.94	1.06
1:B:241:CYS:HG	3:B:401:CYC:HAC2	1.17	0.92
1:A:206:ASP:OD1	1:A:207:ALA:N	2.03	0.90
1:A:241:CYS:HG	3:A:402:CYC:CAC	1.68	0.89
1:B:241:CYS:SG	3:B:401:CYC:H2C	2.17	0.84
1:A:241:CYS:HG	3:A:402:CYC:HAC2	0.75	0.83
1:A:241:CYS:SG	3:A:402:CYC:C3C	2.68	0.82
1:A:241:CYS:SG	3:A:402:CYC:HAC1	2.18	0.81
1:B:205:ILE:HD12	1:B:205:ILE:O	1.90	0.71
1:B:241:CYS:SG	3:B:401:CYC:C3C	2.78	0.71
1:A:204:VAL:HG21	3:A:402:CYC:HBB1	1.74	0.69
1:A:241:CYS:SG	3:A:402:CYC:C2C	2.82	0.68
1:B:260:LEU:N	1:B:260:LEU:HD12	2.10	0.67
1:B:263:ASP:N	1:B:263:ASP:OD1	2.22	0.66
1:B:241:CYS:SG	3:B:401:CYC:C2C	2.86	0.64
1:A:113:GLN:O	1:A:113:GLN:HG2	1.98	0.64
1:A:76:PRO:HB2	1:A:81:PRO:HA	1.80	0.64
1:A:132:LEU:HD21	1:B:133:ARG:HG2	1.82	0.62
1:B:192:VAL:HB	1:B:208:GLN:HE21	1.64	0.61
1:B:214:PHE:HZ	3:B:401:CYC:HAA1	1.62	0.61
1:B:211:ASP:OD1	3:B:401:CYC:NA	2.35	0.60
1:A:111:LYS:NZ	2:A:401:BEF:F2	2.20	0.55
1:B:211:ASP:HB3	3:B:401:CYC:HHB	1.88	0.55
1:A:71:LEU:HD21	1:A:85:VAL:HG11	1.88	0.54
1:B:83:LEU:HB3	1:B:85:VAL:HG23	1.89	0.54
1:B:195:GLU:OE1	1:B:205:ILE:HB	2.08	0.53
1:A:297:ILE:O	1:A:301:GLN:HG2	2.09	0.53
1:A:80:GLN:HG2	1:A:80:GLN:O	2.07	0.53
1:A:211:ASP:HB3	3:A:402:CYC:HHB	1.91	0.52
1:B:182:TYR:CZ	1:B:190:GLY:HA3	2.44	0.52
1:A:204:VAL:CG2	3:A:402:CYC:HBB1	2.39	0.51
1:B:204:VAL:HG12	1:B:249:PHE:HD1	1.74	0.51

Continued on next page...

Continued from previous page...

Atom-1	Atom-2	Interatomic distance (Å)	Clash overlap (Å)
1:B:178:ARG:NH1	1:B:202:VAL:O	2.45	0.50
1:A:220:GLU:OE1	1:A:224:GLN:NE2	2.45	0.50
1:A:62:LEU:HB2	1:A:65:LEU:O	2.12	0.49
1:A:3:GLN:O	1:A:32:SER:OG	2.21	0.49
3:A:402:CYC:HMB3	3:A:402:CYC:CMA	2.42	0.49
3:B:401:CYC:HMB3	3:B:401:CYC:CMA	2.43	0.49
1:A:64:ASP:OD1	1:A:64:ASP:N	2.40	0.48
1:B:253:ALA:HB3	1:B:273:GLN:HB3	1.96	0.48
1:B:214:PHE:CZ	3:B:401:CYC:HAA1	2.46	0.47
1:A:206:ASP:CG	1:A:207:ALA:N	2.68	0.47
1:B:211:ASP:CB	3:B:401:CYC:HHB	2.45	0.46
1:A:29:ARG:HA	1:A:29:ARG:HD2	1.68	0.46
1:A:301:GLN:HE22	1:B:301:GLN:HB3	1.81	0.46
1:A:97:ALA:O	1:A:101:MET:HG2	2.16	0.45
3:B:401:CYC:HHA	3:B:401:CYC:HBA1	1.98	0.45
3:A:402:CYC:HHA	3:A:402:CYC:HBA1	1.98	0.45
1:A:178:ARG:HB3	1:A:272:ASN:HB2	1.98	0.45
1:A:179:VAL:HG22	1:A:271:VAL:HG22	1.98	0.45
1:B:142:ARG:NH2	1:B:290:GLU:OE1	2.42	0.45
1:B:38:ALA:HB2	1:B:47:LEU:HD12	1.99	0.45
1:A:86:ILE:HD11	1:A:123:VAL:HA	1.98	0.44
1:B:249:PHE:CD2	1:B:249:PHE:N	2.84	0.44
1:B:76:PRO:HB2	1:B:81:PRO:HA	1.97	0.44
1:A:146:VAL:HG13	1:A:294:GLN:OE1	2.17	0.44
1:B:117:GLU:H	1:B:117:GLU:CD	2.21	0.44
1:B:166:THR:O	1:B:170:VAL:HG13	2.18	0.43
1:B:233:ILE:HD12	1:B:243:VAL:HG23	1.99	0.43
3:B:401:CYC:HBD1	3:B:401:CYC:HBA1	2.01	0.43
1:A:178:ARG:NH1	1:A:204:VAL:HG13	2.34	0.43
1:B:260:LEU:N	1:B:260:LEU:CD1	2.81	0.42
1:A:19:GLU:O	1:A:23:ARG:HG3	2.20	0.42
1:B:145:VAL:HG22	1:B:169:GLU:HG3	2.02	0.42
1:B:179:VAL:HG22	1:B:271:VAL:HG22	2.01	0.41
1:B:212:GLN:O	1:B:215:VAL:HG22	2.19	0.41
1:A:211:ASP:OD2	3:A:402:CYC:NA	2.53	0.41
3:B:401:CYC:HHA	3:B:401:CYC:HBD1	2.02	0.41
1:A:80:GLN:CG	1:A:80:GLN:O	2.70	0.40
1:B:221:ASP:N	1:B:221:ASP:OD1	2.54	0.40

There are no symmetry-related clashes.

5.3 Torsion angles

5.3.1 Protein backbone

In the following table, the Percentiles column shows the percent Ramachandran outliers of the chain as a percentile score with respect to all X-ray entries followed by that with respect to entries of similar resolution.

The Analysed column shows the number of residues for which the backbone conformation was analysed, and the total number of residues.

Mol	Chain	Analysed	Favoured	Allowed	Outliers	Percentiles	
1	A	299/316 (95%)	294 (98%)	5 (2%)	0	100	100
1	B	297/316 (94%)	293 (99%)	4 (1%)	0	100	100
All	All	596/632 (94%)	587 (98%)	9 (2%)	0	100	100

There are no Ramachandran outliers to report.

5.3.2 Protein sidechains

In the following table, the Percentiles column shows the percent sidechain outliers of the chain as a percentile score with respect to all X-ray entries followed by that with respect to entries of similar resolution.

The Analysed column shows the number of residues for which the sidechain conformation was analysed, and the total number of residues.

Mol	Chain	Analysed	Rotameric	Outliers	Percentiles	
1	A	264/277 (95%)	259 (98%)	5 (2%)	57	72
1	B	263/277 (95%)	257 (98%)	6 (2%)	50	65
All	All	527/554 (95%)	516 (98%)	11 (2%)	53	68

All (11) residues with a non-rotameric sidechain are listed below:

Mol	Chain	Res	Type
1	A	16	GLU
1	A	29	ARG
1	A	80	GLN
1	A	142	ARG
1	A	224	GLN
1	B	49	GLN
1	B	83	LEU
1	B	205	ILE

Continued on next page...

Continued from previous page...

Mol	Chain	Res	Type
1	B	243	VAL
1	B	263	ASP
1	B	300	GLN

Some sidechains can be flipped to improve hydrogen bonding and reduce clashes. All (1) such sidechains are listed below:

Mol	Chain	Res	Type
1	B	113	GLN

5.3.3 RNA ⓘ

There are no RNA molecules in this entry.

5.4 Non-standard residues in protein, DNA, RNA chains ⓘ

There are no non-standard protein/DNA/RNA residues in this entry.

5.5 Carbohydrates ⓘ

There are no carbohydrates in this entry.

5.6 Ligand geometry ⓘ

Of 7 ligands modelled in this entry, 4 are monoatomic - leaving 3 for Mogul analysis.

In the following table, the Counts columns list the number of bonds (or angles) for which Mogul statistics could be retrieved, the number of bonds (or angles) that are observed in the model and the number of bonds (or angles) that are defined in the Chemical Component Dictionary. The Link column lists molecule types, if any, to which the group is linked. The Z score for a bond length (or angle) is the number of standard deviations the observed value is removed from the expected value. A bond length (or angle) with $|Z| > 2$ is considered an outlier worth inspection. RMSZ is the root-mean-square of all Z scores of the bond lengths (or angles).

Mol	Type	Chain	Res	Link	Bond lengths			Bond angles		
					Counts	RMSZ	$\# Z > 2$	Counts	RMSZ	$\# Z > 2$
3	CYC	A	402	-	36,46,46	5.12	15 (41%)	44,67,67	2.38	20 (45%)
3	CYC	B	401	-	36,46,46	5.07	15 (41%)	44,67,67	2.48	21 (47%)
2	BEF	A	401	1,4	0,3,3	0.00	-	-		

In the following table, the Chirals column lists the number of chiral outliers, the number of chiral centers analysed, the number of these observed in the model and the number defined in the Chemical Component Dictionary. Similar counts are reported in the Torsion and Rings columns. '-' means no outliers of that kind were identified.

Mol	Type	Chain	Res	Link	Chirals	Torsions	Rings
3	CYC	A	402	-	-	10/21/74/74	0/4/4/4
3	CYC	B	401	-	-	11/21/74/74	0/4/4/4

All (30) bond length outliers are listed below:

Mol	Chain	Res	Type	Atoms	Z	Observed(Å)	Ideal(Å)
3	A	402	CYC	C2C-C1C	-21.23	1.33	1.52
3	B	401	CYC	C2C-C1C	-21.16	1.33	1.52
3	A	402	CYC	C3C-C4C	-11.65	1.33	1.50
3	B	401	CYC	C3C-C4C	-11.18	1.34	1.50
3	A	402	CYC	C4B-C3B	-8.04	1.32	1.48
3	B	401	CYC	C4B-C3B	-7.99	1.33	1.48
3	A	402	CYC	C2C-C3C	-7.61	1.33	1.54
3	A	402	CYC	C1A-C2A	-7.59	1.33	1.45
3	B	401	CYC	C1A-C2A	-7.51	1.33	1.45
3	B	401	CYC	C2C-C3C	-7.43	1.33	1.54
3	B	401	CYC	OB-C4B	6.85	1.36	1.23
3	A	402	CYC	OB-C4B	6.71	1.36	1.23
3	A	402	CYC	C1B-C2B	-5.29	1.35	1.45
3	B	401	CYC	C1B-C2B	-5.21	1.35	1.45
3	A	402	CYC	C4A-C3A	-4.84	1.35	1.45
3	B	401	CYC	C4A-C3A	-4.78	1.35	1.45
3	B	401	CYC	CBB-CAB	-4.16	1.32	1.51
3	A	402	CYC	CBB-CAB	-4.14	1.33	1.51
3	B	401	CYC	C1C-NC	-2.75	1.34	1.37
3	A	402	CYC	C1C-NC	-2.71	1.34	1.37
3	A	402	CYC	C1B-NB	-2.51	1.33	1.37
3	A	402	CYC	CHB-C4A	-2.46	1.34	1.40
3	A	402	CYC	C1A-NA	-2.43	1.33	1.38
3	B	401	CYC	CHB-C4A	-2.39	1.34	1.40
3	B	401	CYC	C1B-NB	-2.27	1.34	1.37
3	B	401	CYC	C1A-NA	-2.24	1.33	1.38
3	A	402	CYC	C4B-NB	-2.19	1.33	1.38
3	B	401	CYC	C4C-NC	-2.04	1.33	1.37
3	A	402	CYC	C4C-NC	-2.03	1.33	1.37
3	B	401	CYC	C4B-NB	-2.02	1.33	1.38

All (41) bond angle outliers are listed below:

Mol	Chain	Res	Type	Atoms	Z	Observed(°)	Ideal(°)
3	B	401	CYC	CMB-C2B-C1B	5.86	131.49	124.17
3	A	402	CYC	CMB-C2B-C1B	5.70	131.29	124.17
3	B	401	CYC	C2C-C3C-C4C	5.12	109.00	101.34
3	A	402	CYC	C2C-C3C-C4C	4.81	108.55	101.34
3	B	401	CYC	C4D-CHA-C1A	-4.32	123.64	128.81
3	A	402	CYC	C4D-CHA-C1A	-4.23	123.75	128.81
3	B	401	CYC	CAB-C3B-C4B	4.18	127.98	121.38
3	B	401	CYC	CMA-C3A-C4A	4.02	131.25	125.06
3	A	402	CYC	CAB-C3B-C4B	3.84	127.44	121.38
3	A	402	CYC	CMA-C3A-C4A	3.68	130.73	125.06
3	A	402	CYC	CMC-C2C-C1C	3.51	119.97	112.40
3	B	401	CYC	CAC-C3C-C4C	3.48	121.61	112.67
3	B	401	CYC	C2C-C1C-NC	3.44	111.24	108.27
3	A	402	CYC	CAC-C3C-C4C	3.38	121.36	112.67
3	A	402	CYC	CHD-C4C-NC	3.27	129.09	125.20
3	B	401	CYC	CHD-C4C-NC	3.25	129.07	125.20
3	B	401	CYC	CMC-C2C-C1C	3.22	119.35	112.40
3	B	401	CYC	CAD-CBD-CGD	-3.22	107.27	112.67
3	A	402	CYC	C2C-C1C-NC	3.21	111.04	108.27
3	B	401	CYC	OC-C1C-C2C	-3.19	123.64	126.17
3	A	402	CYC	CAD-CBD-CGD	-3.09	107.49	112.67
3	A	402	CYC	OC-C1C-C2C	-3.03	123.76	126.17
3	A	402	CYC	OB-C4B-C3B	2.92	131.21	128.04
3	A	402	CYC	CAC-C3C-C2C	2.84	121.36	114.26
3	B	401	CYC	CAA-C2A-C3A	-2.79	122.68	127.88
3	A	402	CYC	CHB-C1B-NB	-2.78	120.09	126.06
3	B	401	CYC	OB-C4B-C3B	2.75	131.03	128.04
3	B	401	CYC	CAC-C3C-C2C	2.69	120.97	114.26
3	B	401	CYC	CMB-C2B-C3B	-2.38	119.67	126.12
3	B	401	CYC	CAB-C3B-C2B	-2.36	123.49	127.53
3	B	401	CYC	C3A-C4A-NA	-2.32	105.57	110.53
3	B	401	CYC	CBC-CAC-C3C	-2.32	108.31	113.47
3	B	401	CYC	CAA-C2A-C1A	2.32	129.10	125.01
3	B	401	CYC	CMA-C3A-C2A	-2.29	119.91	126.12
3	A	402	CYC	CAA-C2A-C3A	-2.23	123.72	127.88
3	B	401	CYC	CHB-C1B-NB	-2.22	121.29	126.06
3	A	402	CYC	C3A-C4A-NA	-2.16	105.91	110.53
3	A	402	CYC	CMB-C2B-C3B	-2.15	120.28	126.12
3	A	402	CYC	CHB-C4A-NA	-2.14	120.47	124.93
3	A	402	CYC	CAB-C3B-C2B	-2.02	124.07	127.53
3	A	402	CYC	CHB-C4A-C3A	2.02	130.09	124.90

There are no chirality outliers.

All (21) torsion outliers are listed below:

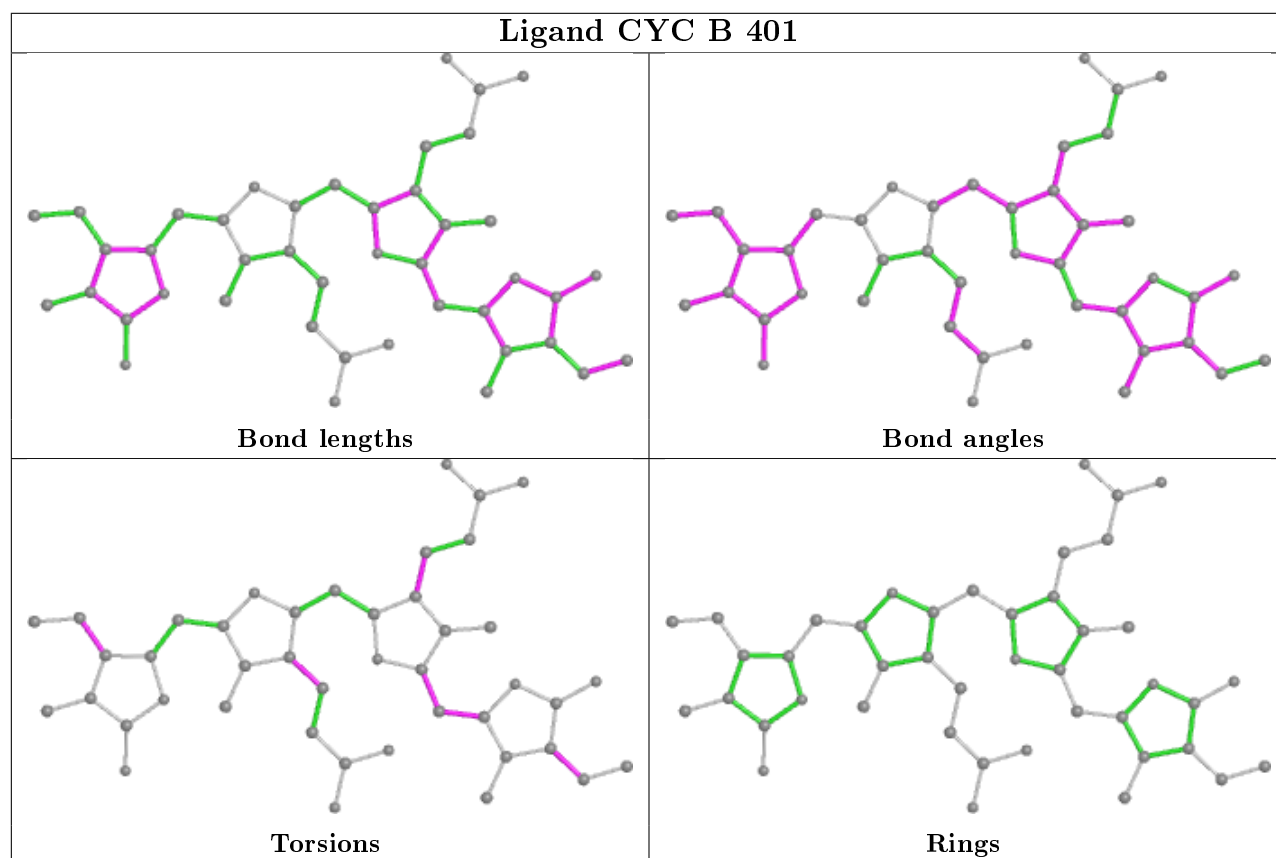
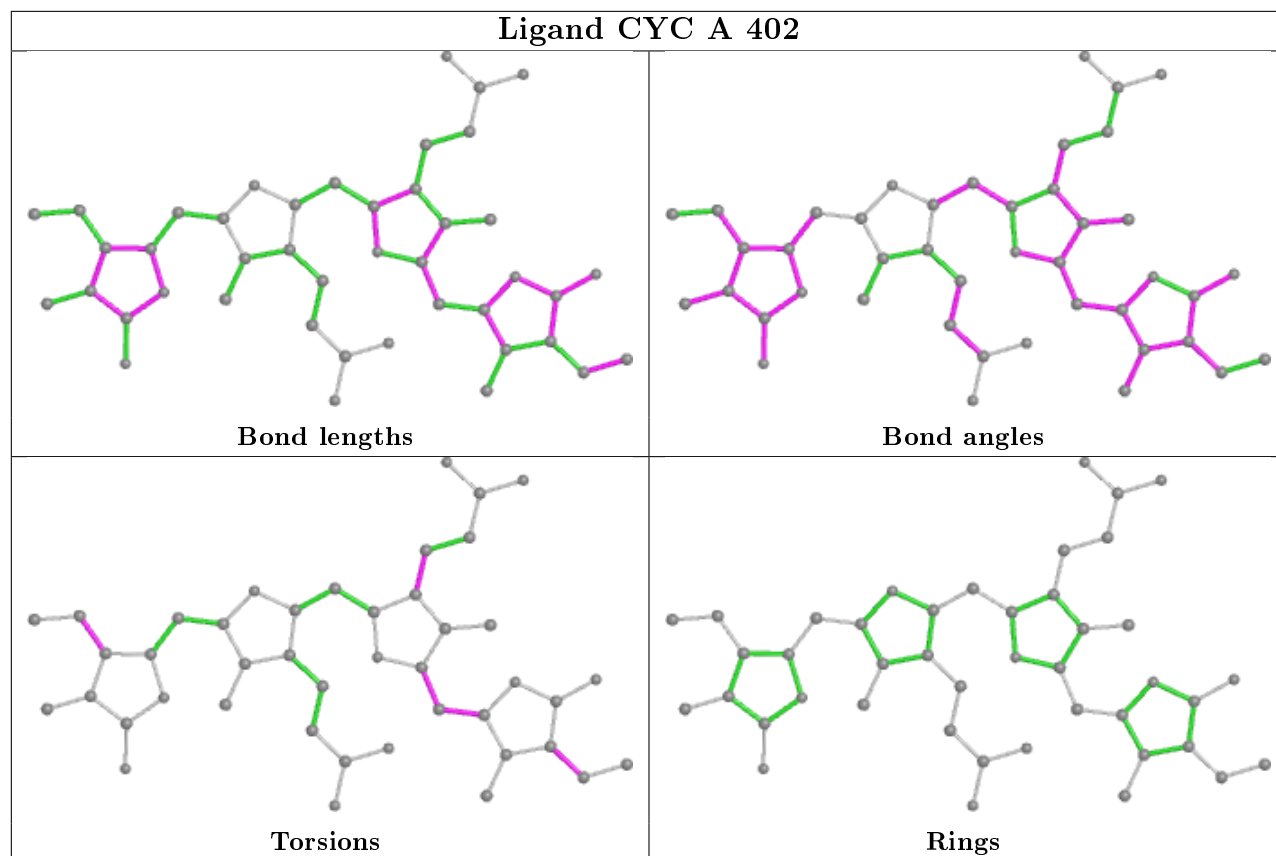
Mol	Chain	Res	Type	Atoms
3	A	402	CYC	C3A-C4A-CHB-C1B
3	A	402	CYC	C2B-C1B-CHB-C4A
3	A	402	CYC	C2B-C3B-CAB-CBB
3	A	402	CYC	C4B-C3B-CAB-CBB
3	A	402	CYC	C2C-C3C-CAC-CBC
3	A	402	CYC	C4C-C3C-CAC-CBC
3	B	401	CYC	C3A-C4A-CHB-C1B
3	B	401	CYC	C2B-C1B-CHB-C4A
3	B	401	CYC	C2B-C3B-CAB-CBB
3	B	401	CYC	C4B-C3B-CAB-CBB
3	B	401	CYC	C2C-C3C-CAC-CBC
3	B	401	CYC	C4C-C3C-CAC-CBC
3	A	402	CYC	NB-C1B-CHB-C4A
3	B	401	CYC	NB-C1B-CHB-C4A
3	A	402	CYC	NA-C4A-CHB-C1B
3	B	401	CYC	NA-C4A-CHB-C1B
3	B	401	CYC	C1A-C2A-CAA-CBA
3	B	401	CYC	C2D-C3D-CAD-CBD
3	B	401	CYC	C3A-C2A-CAA-CBA
3	A	402	CYC	C3A-C2A-CAA-CBA
3	A	402	CYC	C1A-C2A-CAA-CBA

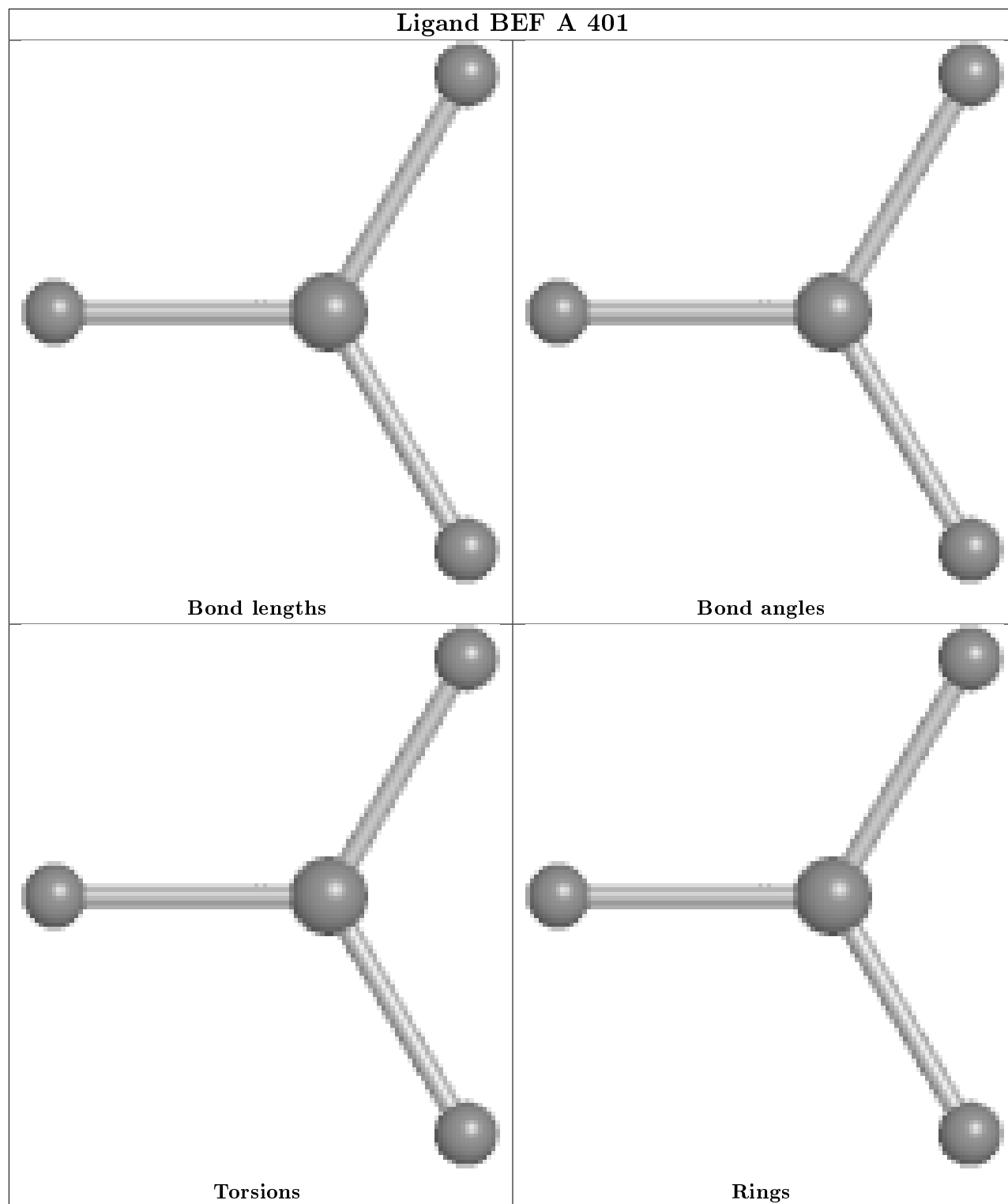
There are no ring outliers.

3 monomers are involved in 29 short contacts:

Mol	Chain	Res	Type	Clashes	Symm-Clashes
3	A	402	CYC	13	0
3	B	401	CYC	15	0
2	A	401	BEF	1	0

The following is a two-dimensional graphical depiction of Mogul quality analysis of bond lengths, bond angles, torsion angles, and ring geometry for all instances of the Ligand of Interest. In addition, ligands with molecular weight > 250 and outliers as shown on the validation Tables will also be included. For torsion angles, if less than 5% of the Mogul distribution of torsion angles is within 10 degrees of the torsion angle in question, then that torsion angle is considered an outlier. Any bond that is central to one or more torsion angles identified as an outlier by Mogul will be highlighted in the graph. For rings, the root-mean-square deviation (RMSD) between the ring in question and similar rings identified by Mogul is calculated over all ring torsion angles. If the average RMSD is greater than 60 degrees and the minimal RMSD between the ring in question and any Mogul-identified rings is also greater than 60 degrees, then that ring is considered an outlier. The outliers are highlighted in purple. The color gray indicates Mogul did not find sufficient equivalents in the CSD to analyse the geometry.





5.7 Other polymers [i](#)

There are no such residues in this entry.

5.8 Polymer linkage issues ⓘ

There are no chain breaks in this entry.

6 Fit of model and data ⓘ

6.1 Protein, DNA and RNA chains ⓘ

In the following table, the column labelled ‘#RSRZ> 2’ contains the number (and percentage) of RSRZ outliers, followed by percent RSRZ outliers for the chain as percentile scores relative to all X-ray entries and entries of similar resolution. The OWAB column contains the minimum, median, 95th percentile and maximum values of the occupancy-weighted average B-factor per residue. The column labelled ‘Q< 0.9’ lists the number of (and percentage) of residues with an average occupancy less than 0.9.

Mol	Chain	Analysed	<RSRZ>	#RSRZ>2	OWAB(Å ²)	Q<0.9
1	A	302/316 (95%)	0.09	15 (4%) 28 34	45, 73, 132, 183	0
1	B	301/316 (95%)	0.21	15 (4%) 28 34	49, 78, 136, 173	0
All	All	603/632 (95%)	0.15	30 (4%) 28 34	45, 75, 135, 183	0

All (30) RSRZ outliers are listed below:

Mol	Chain	Res	Type	RSRZ
1	A	213	TYR	5.5
1	A	305	TYR	4.4
1	A	209	VAL	4.1
1	A	212	GLN	3.7
1	B	214	PHE	3.5
1	B	204	VAL	3.4
1	B	3	GLN	3.2
1	A	222	TYR	3.2
1	B	29	ARG	3.1
1	A	189	SER	3.0
1	B	209	VAL	3.0
1	B	208	GLN	3.0
1	B	206	ASP	2.9
1	A	207	ALA	2.7
1	A	211	ASP	2.7
1	B	26	LEU	2.6
1	A	190	GLY	2.6
1	B	182	TYR	2.5
1	B	199	ASP	2.5
1	A	210	GLU	2.4
1	A	301	GLN	2.4
1	B	207	ALA	2.3
1	B	203	PRO	2.3
1	B	307	GLN	2.3

Continued on next page...

Continued from previous page...

Mol	Chain	Res	Type	RSRZ
1	A	191	ILE	2.3
1	A	306	GLN	2.3
1	A	112	GLU	2.3
1	B	305	TYR	2.1
1	A	182	TYR	2.1
1	B	205	ILE	2.0

6.2 Non-standard residues in protein, DNA, RNA chains ⓘ

There are no non-standard protein/DNA/RNA residues in this entry.

6.3 Carbohydrates ⓘ

There are no carbohydrates in this entry.

6.4 Ligands ⓘ

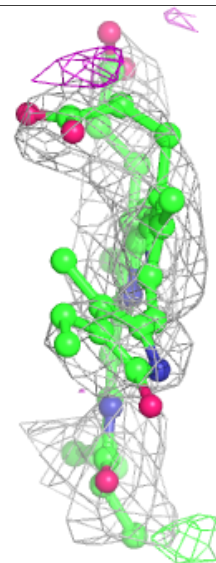
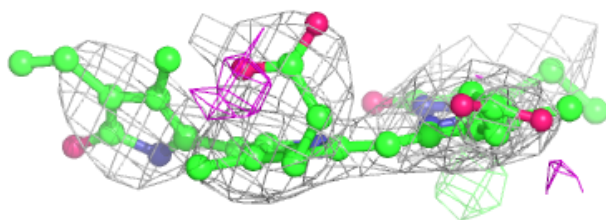
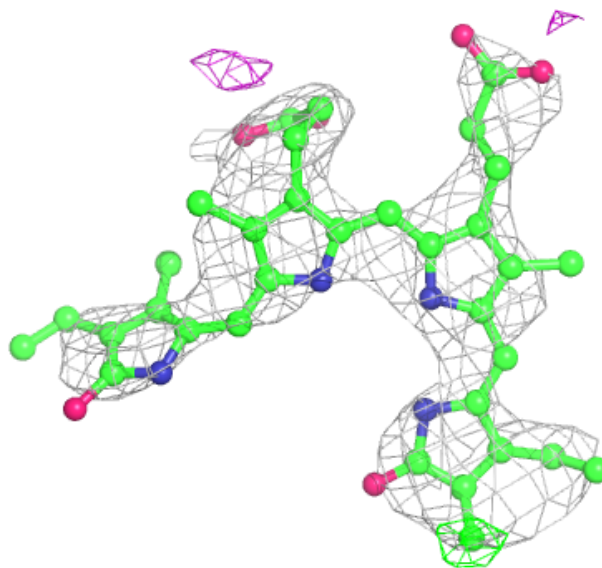
In the following table, the Atoms column lists the number of modelled atoms in the group and the number defined in the chemical component dictionary. The B-factors column lists the minimum, median, 95th percentile and maximum values of B factors of atoms in the group. The column labelled 'Q<0.9' lists the number of atoms with occupancy less than 0.9.

Mol	Type	Chain	Res	Atoms	RSCC	RSR	B-factors(Å ²)	Q<0.9
4	MG	B	404	1/1	0.76	0.11	89,89,89,89	0
3	CYC	B	401	43/43	0.78	0.35	103,133,145,146	0
4	MG	B	403	1/1	0.83	0.15	95,95,95,95	0
3	CYC	A	402	43/43	0.83	0.31	80,114,124,128	0
4	MG	A	403	1/1	0.93	0.10	65,65,65,65	0
2	BEF	A	401	4/4	0.95	0.12	36,61,79,87	0
4	MG	B	402	1/1	0.97	0.19	53,53,53,53	0

The following is a graphical depiction of the model fit to experimental electron density of all instances of the Ligand of Interest. In addition, ligands with molecular weight > 250 and outliers as shown on the geometry validation Tables will also be included. Each fit is shown from different orientation to approximate a three-dimensional view.

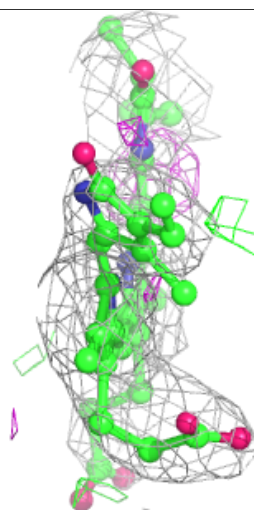
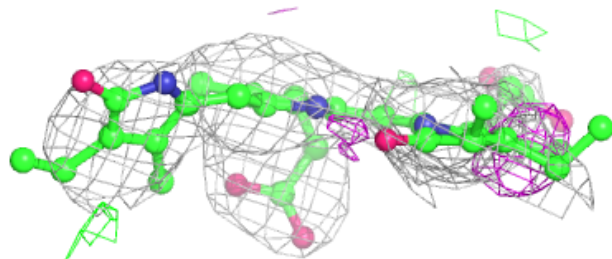
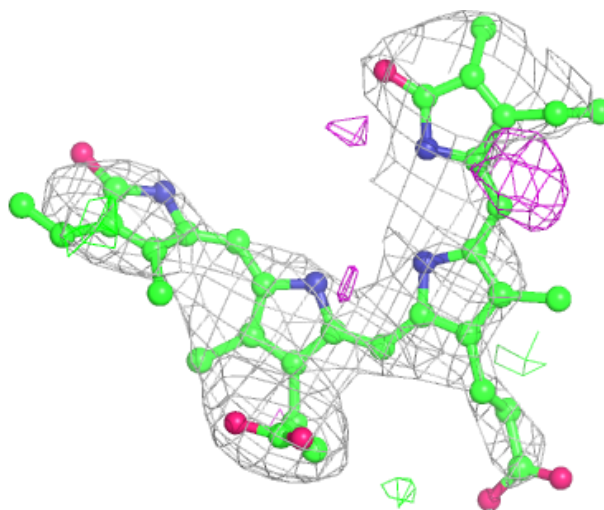
Electron density around CYC B 401:

$2mF_o-DF_c$ (at 0.7 rmsd) in gray
 mF_o-DF_c (at 3 rmsd) in purple (negative)
and green (positive)



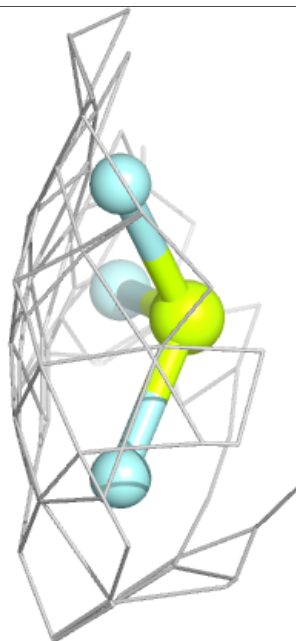
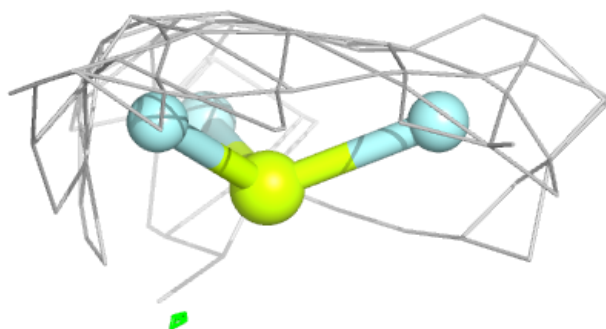
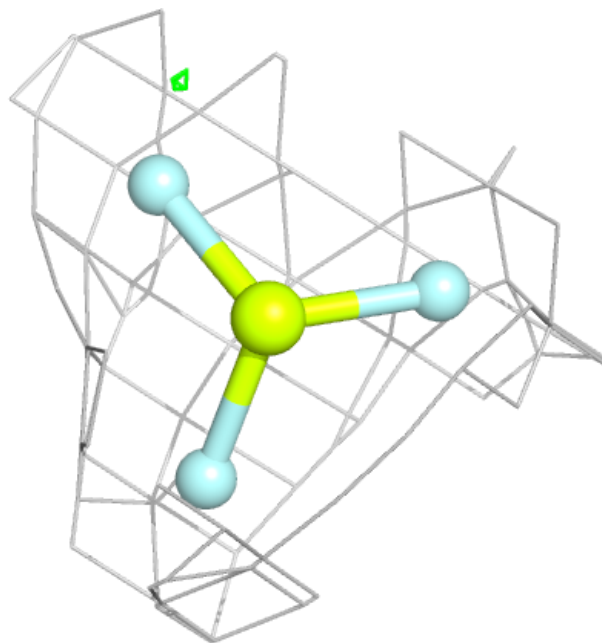
Electron density around CYC A 402:

$2mF_o-DF_c$ (at 0.7 rmsd) in gray
 mF_o-DF_c (at 3 rmsd) in purple (negative)
and green (positive)



Electron density around BEF A 401:

$2mF_o-DF_c$ (at 0.7 rmsd) in gray
 mF_o-DF_c (at 3 rmsd) in purple (negative)
and green (positive)



6.5 Other polymers [i](#)

There are no such residues in this entry.