



Full wwPDB X-ray Structure Validation Report ⓘ

May 21, 2020 – 03:43 am BST

PDB ID : 2OB2
Title : ppm1 in the absence of 1,8-ANS (cf 1JD)
Authors : Groves, M.R.; Mueller, I.B.; Kreplin, X.; Mueller-Dieckmann, J.
Deposited on : 2006-12-18
Resolution : 1.92 Å(reported)

This is a Full wwPDB X-ray Structure Validation Report for a publicly released PDB entry.

We welcome your comments at validation@mail.wwpdb.org

A user guide is available at

<https://www.wwpdb.org/validation/2017/XrayValidationReportHelp>

with specific help available everywhere you see the ⓘ symbol.

The following versions of software and data (see [references ⓘ](#)) were used in the production of this report:

MolProbity : 4.02b-467
Mogul : 1.8.5 (274361), CSD as541be (2020)
Xtriage (Phenix) : 1.13
EDS : 2.11
buster-report : 1.1.7 (2018)
Percentile statistics : 20191225.v01 (using entries in the PDB archive December 25th 2019)
Refmac : 5.8.0158
CCP4 : 7.0.044 (Gargrove)
Ideal geometry (proteins) : Engh & Huber (2001)
Ideal geometry (DNA, RNA) : Parkinson et al. (1996)
Validation Pipeline (wwPDB-VP) : 2.11

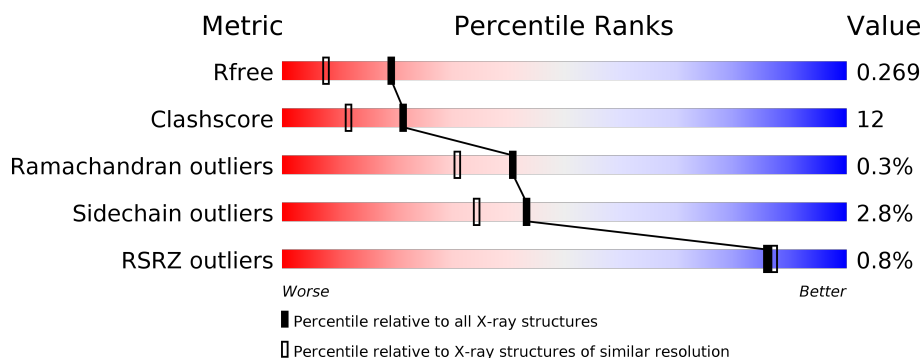
1 Overall quality at a glance

The following experimental techniques were used to determine the structure:

X-RAY DIFFRACTION




The reported resolution of this entry is 1.92 Å.

Percentile scores (ranging between 0-100) for global validation metrics of the entry are shown in the following graphic. The table shows the number of entries on which the scores are based.



Metric	Whole archive (#Entries)	Similar resolution (#Entries, resolution range(Å))
R_{free}	130704	7937 (1.94-1.90)
Clashscore	141614	8644 (1.94-1.90)
Ramachandran outliers	138981	8530 (1.94-1.90)
Sidechain outliers	138945	8530 (1.94-1.90)
RSRZ outliers	127900	7793 (1.94-1.90)

The table below summarises the geometric issues observed across the polymeric chains and their fit to the electron density. The red, orange, yellow and green segments on the lower bar indicate the fraction of residues that contain outliers for ≥ 3 , 2, 1 and 0 types of geometric quality criteria respectively. A grey segment represents the fraction of residues that are not modelled. The numeric value for each fraction is indicated below the corresponding segment, with a dot representing fractions $\leq 5\%$. The upper red bar (where present) indicates the fraction of residues that have poor fit to the electron density. The numeric value is given above the bar.

Mol	Chain	Length	Quality of chain
1	A	327	 78% 20% •
1	B	327	 79% 20% •
1	C	327	 2% 65% 31% •

2 Entry composition [i](#)

There are 5 unique types of molecules in this entry. The entry contains 8641 atoms, of which 0 are hydrogens and 0 are deuteriums.

In the tables below, the ZeroOcc column contains the number of atoms modelled with zero occupancy, the AltConf column contains the number of residues with at least one atom in alternate conformation and the Trace column contains the number of residues modelled with at most 2 atoms.

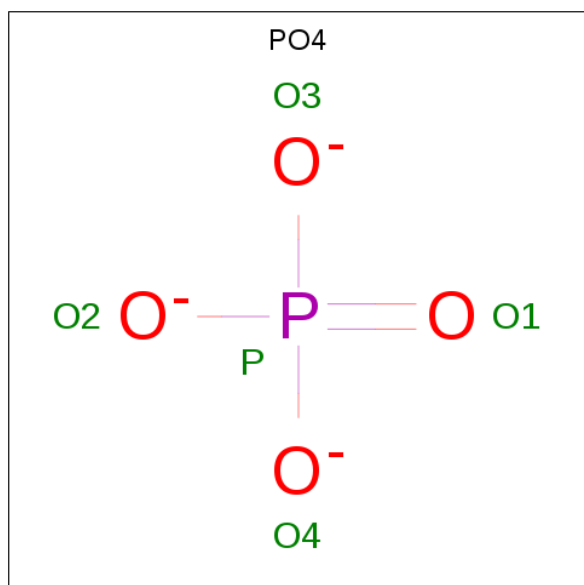
- Molecule 1 is a protein called Leucine carboxyl methyltransferase 1.

Mol	Chain	Residues	Atoms					ZeroOcc	AltConf	Trace
1	A	327	Total	C	N	O	S	0	0	0
			2636	1676	448	494	18			
1	B	327	Total	C	N	O	S	0	2	0
			2650	1684	451	497	18			
1	C	327	Total	C	N	O	S	0	0	0
			2636	1676	448	494	18			

There are 3 discrepancies between the modelled and reference sequences:

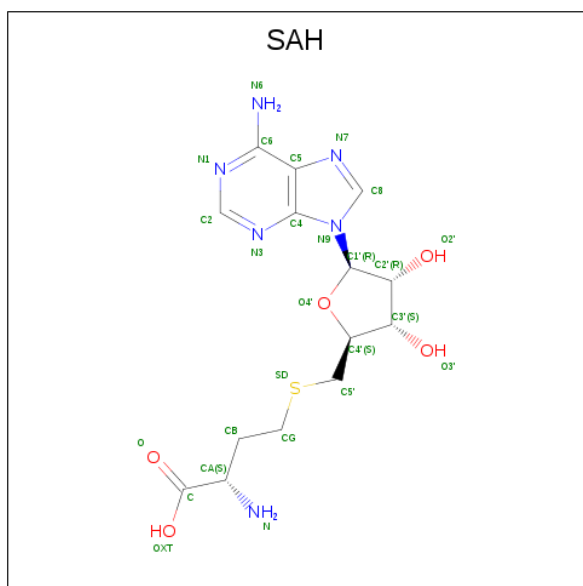
Chain	Residue	Modelled	Actual	Comment	Reference
A	202	SMC	CYS	MODIFIED RESIDUE	UNP Q04081
B	202	SMC	CYS	MODIFIED RESIDUE	UNP Q04081
C	202	SMC	CYS	MODIFIED RESIDUE	UNP Q04081

- Molecule 2 is PHOSPHATE ION (three-letter code: PO4) (formula: O₄P).



Mol	Chain	Residues	Atoms			ZeroOcc	AltConf
2	A	1	Total	O	P	0	0
			5	4	1		

- Molecule 3 is S-ADENOSYL-L-HOMOCYSTEINE (three-letter code: SAH) (formula: $C_{14}H_{20}N_6O_5S$).



Mol	Chain	Residues	Atoms					ZeroOcc	AltConf
3	A	1	Total	C	N	O	S	0	0
			26	14	6	5	1		
3	B	1	Total	C	N	O	S	0	0
			26	14	6	5	1		
3	C	1	Total	C	N	O	S	0	0
			26	14	6	5	1		

- Molecule 4 is GLYCEROL (three-letter code: GOL) (formula: $C_3H_8O_3$).



Mol	Chain	Residues	Atoms			ZeroOcc	AltConf
4	A	1	Total	C	O	0	0
			6	3	3		
4	A	1	Total	C	O	0	0
			6	3	3		

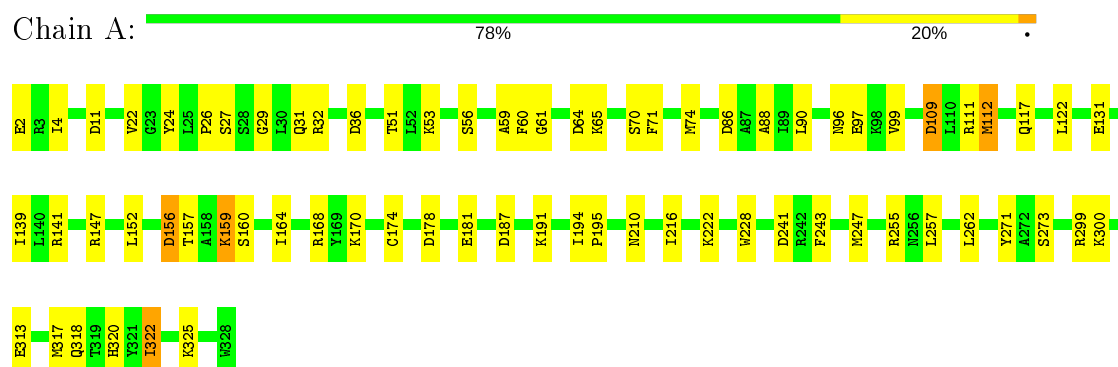
- Molecule 5 is water.

Mol	Chain	Residues	Atoms		ZeroOcc	AltConf
5	A	246	Total	O	0	0
			246	246		
5	B	232	Total	O	0	0
			232	232		
5	C	146	Total	O	0	0
			146	146		

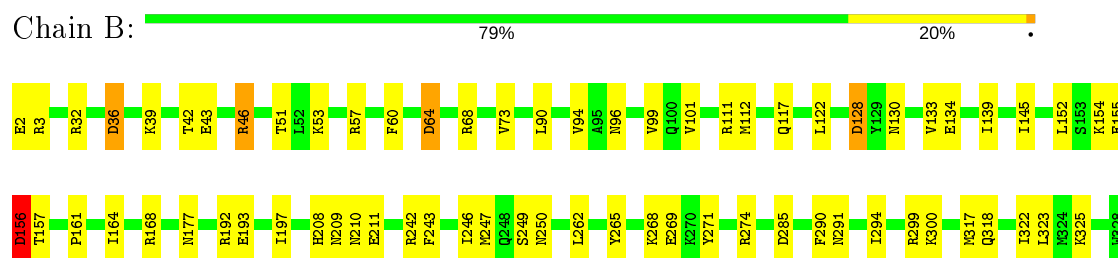
3 Residue-property plots [i](#)

These plots are drawn for all protein, RNA and DNA chains in the entry. The first graphic for a chain summarises the proportions of the various outlier classes displayed in the second graphic. The second graphic shows the sequence view annotated by issues in geometry and electron density. Residues are color-coded according to the number of geometric quality criteria for which they contain at least one outlier: green = 0, yellow = 1, orange = 2 and red = 3 or more. A red dot above a residue indicates a poor fit to the electron density ($RSRZ > 2$). Stretches of 2 or more consecutive residues without any outlier are shown as a green connector. Residues present in the sample, but not in the model, are shown in grey.

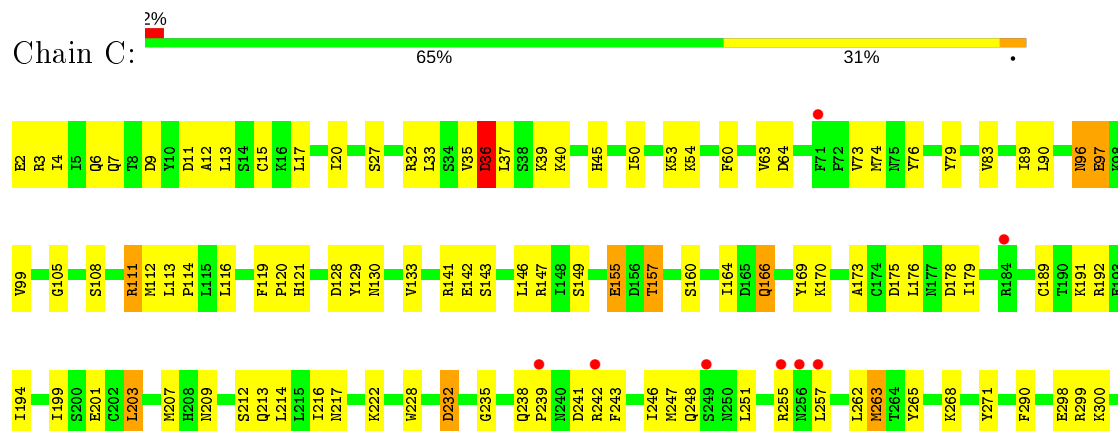
- Molecule 1: Leucine carboxyl methyltransferase 1



- Molecule 1: Leucine carboxyl methyltransferase 1



- Molecule 1: Leucine carboxyl methyltransferase 1



I314	K315	V316	M317	Q318	I322	K325	K328
------	------	------	------	------	------	------	------

4 Data and refinement statistics

Property	Value	Source
Space group	P 65	Depositor
Cell constants a, b, c, α , β , γ	110.62Å 110.62Å 161.94Å 90.00° 90.00° 120.00°	Depositor
Resolution (Å)	33.06 – 1.92 33.05 – 1.92	Depositor EDS
% Data completeness (in resolution range)	99.7 (33.06-1.92) 99.7 (33.05-1.92)	Depositor EDS
R_{merge}	(Not available)	Depositor
R_{sym}	(Not available)	Depositor
$\langle I/\sigma(I) \rangle$ ¹	1.32 (at 1.92Å)	Xtriage
Refinement program	REFMAC 5.2.0003	Depositor
R, R_{free}	0.206 , 0.268 0.207 , 0.269	Depositor DCC
R_{free} test set	4276 reflections (5.00%)	wwPDB-VP
Wilson B-factor (Å ²)	17.4	Xtriage
Anisotropy	0.091	Xtriage
Bulk solvent k_{sol} (e/Å ³), B_{sol} (Å ²)	0.38 , 21.9	EDS
L-test for twinning ²	$\langle L \rangle = 0.44$, $\langle L^2 \rangle = 0.26$	Xtriage
Estimated twinning fraction	0.336 for h,-h-k,-l	Xtriage
F_o, F_c correlation	0.94	EDS
Total number of atoms	8641	wwPDB-VP
Average B, all atoms (Å ²)	16.0	wwPDB-VP

Xtriage's analysis on translational NCS is as follows: *The largest off-origin peak in the Patterson function is 4.64% of the height of the origin peak. No significant pseudotranslation is detected.*

¹Intensities estimated from amplitudes.

²Theoretical values of $\langle |L| \rangle$, $\langle L^2 \rangle$ for acentric reflections are 0.5, 0.333 respectively for untwinned datasets, and 0.375, 0.2 for perfectly twinned datasets.

5 Model quality

5.1 Standard geometry

Bond lengths and bond angles in the following residue types are not validated in this section: GOL, PO4, SAH, SMC

The Z score for a bond length (or angle) is the number of standard deviations the observed value is removed from the expected value. A bond length (or angle) with $|Z| > 5$ is considered an outlier worth inspection. RMSZ is the root-mean-square of all Z scores of the bond lengths (or angles).

Mol	Chain	Bond lengths		Bond angles	
		RMSZ	$\# Z > 5$	RMSZ	$\# Z > 5$
1	A	0.95	0/2677	1.01	6/3613 (0.2%)
1	B	0.93	0/2697	1.01	6/3639 (0.2%)
1	C	0.87	0/2677	0.96	8/3613 (0.2%)
All	All	0.92	0/8051	0.99	20/10865 (0.2%)

There are no bond length outliers.

All (20) bond angle outliers are listed below:

Mol	Chain	Res	Type	Atoms	Z	Observed(°)	Ideal(°)
1	A	187	ASP	CB-CG-OD2	6.78	124.41	118.30
1	C	232	ASP	CB-CG-OD2	6.63	124.27	118.30
1	A	112	MET	CG-SD-CE	6.63	110.81	100.20
1	B	111	ARG	NE-CZ-NH1	6.34	123.47	120.30
1	B	64	ASP	CB-CG-OD2	6.11	123.80	118.30
1	C	11	ASP	CB-CG-OD2	5.94	123.65	118.30
1	C	36	ASP	CB-CG-OD2	5.86	123.58	118.30
1	B	285	ASP	CB-CG-OD2	5.81	123.53	118.30
1	B	36	ASP	CB-CG-OD1	5.75	123.48	118.30
1	A	178	ASP	CB-CG-OD2	5.73	123.45	118.30
1	C	128	ASP	CB-CG-OD2	5.62	123.36	118.30
1	B	128	ASP	CB-CG-OD2	5.54	123.29	118.30
1	C	9	ASP	CB-CG-OD2	5.53	123.28	118.30
1	B	274	ARG	NE-CZ-NH1	-5.48	117.56	120.30
1	A	109	ASP	CB-CG-OD2	5.35	123.11	118.30
1	A	64	ASP	CB-CG-OD2	5.31	123.08	118.30
1	C	175	ASP	CB-CG-OD2	5.20	122.98	118.30
1	C	64	ASP	CB-CG-OD2	5.18	122.96	118.30
1	A	147	ARG	NE-CZ-NH1	5.09	122.84	120.30
1	C	178	ASP	CB-CG-OD2	5.04	122.84	118.30

There are no chirality outliers.

There are no planarity outliers.

5.2 Too-close contacts

In the following table, the Non-H and H(model) columns list the number of non-hydrogen atoms and hydrogen atoms in the chain respectively. The H(added) column lists the number of hydrogen atoms added and optimized by MolProbity. The Clashes column lists the number of clashes within the asymmetric unit, whereas Symm-Clashes lists symmetry related clashes.

Mol	Chain	Non-H	H(model)	H(added)	Clashes	Symm-Clashes
1	A	2636	0	2666	60	0
1	B	2650	0	2682	59	0
1	C	2636	0	2666	79	0
2	A	5	0	0	1	0
3	A	26	0	19	0	0
3	B	26	0	19	0	0
3	C	26	0	19	0	0
4	A	12	0	16	1	0
5	A	246	0	0	10	0
5	B	232	0	0	16	0
5	C	146	0	0	10	0
All	All	8641	0	8087	194	0

The all-atom clashscore is defined as the number of clashes found per 1000 atoms (including hydrogen atoms). The all-atom clashscore for this structure is 12.

All (194) close contacts within the same asymmetric unit are listed below, sorted by their clash magnitude.

Atom-1	Atom-2	Interatomic distance (Å)	Clash overlap (Å)
1:A:317:MET:HE3	1:A:318:GLN:NE2	1.66	1.10
1:B:46[A]:ARG:HH21	1:B:46[A]:ARG:HB3	1.06	1.10
1:A:317:MET:HE3	1:A:318:GLN:HE21	0.98	1.09
1:C:317:MET:HE3	1:C:318:GLN:NE2	1.82	0.94
1:A:317:MET:CE	1:A:318:GLN:HE21	1.79	0.94
1:A:27:SER:H	1:A:31:GLN:HE21	1.14	0.94
1:C:317:MET:CE	1:C:318:GLN:HE21	1.82	0.93
1:C:155:GLU:HG3	1:C:157:THR:HG23	1.58	0.86
1:A:70:SER:HB3	1:A:74:MET:CE	2.07	0.85
1:B:46[A]:ARG:HH21	1:B:46[A]:ARG:CB	1.88	0.85
1:B:46[A]:ARG:HB3	1:B:46[A]:ARG:NH2	1.92	0.81
1:B:161:PRO:O	5:B:2019:HOH:O	1.98	0.81

Continued on next page...

Continued from previous page...

Atom-1	Atom-2	Interatomic distance (Å)	Clash overlap (Å)
1:B:242:ARG:HB2	1:B:242:ARG:NH1	1.97	0.80
1:C:2:GLU:N	5:C:1932:HOH:O	2.15	0.80
1:A:27:SER:H	1:A:31:GLN:NE2	1.80	0.79
1:B:193[B]:GLU:HG2	5:B:1988:HOH:O	1.82	0.79
1:C:12:ALA:HB2	5:C:1943:HOH:O	1.83	0.79
1:B:247:MET:HE3	1:B:262:LEU:HD21	1.63	0.78
1:A:70:SER:HB3	1:A:74:MET:HE1	1.66	0.78
1:B:247:MET:HE3	1:B:262:LEU:CD2	2.14	0.78
1:B:242:ARG:CZ	1:B:242:ARG:HB2	2.15	0.76
1:A:271:TYR:CD2	1:A:322:ILE:HD11	2.21	0.75
1:B:64:ASP:O	1:B:68:ARG:HG3	1.87	0.75
1:C:170:LYS:HD2	5:C:1848:HOH:O	1.86	0.75
1:C:317:MET:HE3	1:C:318:GLN:HE21	1.44	0.73
1:C:322:ILE:O	1:C:322:ILE:HD12	1.89	0.73
1:A:36:ASP:H	1:B:117:GLN:HE22	1.38	0.71
1:C:317:MET:CE	1:C:318:GLN:NE2	2.47	0.71
1:B:42:THR:O	1:B:46[A]:ARG:HG3	1.91	0.70
1:A:247:MET:HE3	1:A:262:LEU:HD21	1.74	0.70
1:C:263:MET:HA	1:C:263:MET:HE3	1.74	0.69
1:A:70:SER:CB	1:A:74:MET:HE2	2.23	0.68
1:C:238:GLN:O	1:C:241:ASP:HB2	1.94	0.68
1:C:242:ARG:HE	1:C:246:ILE:HD11	1.59	0.67
1:A:2:GLU:N	5:A:2213:HOH:O	2.28	0.67
1:B:156:ASP:HB3	5:B:2029:HOH:O	1.94	0.66
1:B:46[A]:ARG:HD3	5:B:1979:HOH:O	1.94	0.66
1:A:70:SER:CB	1:A:74:MET:CE	2.74	0.66
1:C:201:GLU:OE2	5:C:1884:HOH:O	2.13	0.66
1:C:3:ARG:O	1:C:7:GLN:HG3	1.96	0.65
1:B:291:ASN:HA	1:B:299:ARG:HH22	1.64	0.63
1:A:117:GLN:HE22	1:B:36:ASP:H	1.46	0.63
1:A:70:SER:HB2	1:A:74:MET:HE2	1.80	0.62
1:A:325:LYS:HE2	5:A:2046:HOH:O	1.99	0.61
1:B:247:MET:CE	1:B:262:LEU:HD21	2.29	0.61
1:A:26:PRO:HA	1:A:31:GLN:HE22	1.67	0.60
1:A:32:ARG:O	4:A:2003:GOL:H32	2.01	0.60
1:B:51:THR:HB	1:B:139:ILE:HG23	1.85	0.59
1:C:143:SER:HB3	1:C:146:LEU:HD12	1.83	0.59
1:B:192:ARG:HD3	5:B:1928:HOH:O	2.04	0.58
1:C:13:LEU:O	1:C:17:LEU:HG	2.04	0.57
1:C:105:GLY:HA3	1:C:203:LEU:HD13	1.87	0.57
1:C:166:GLN:O	5:C:1857:HOH:O	2.17	0.57

Continued on next page...

Continued from previous page...

Atom-1	Atom-2	Interatomic distance (Å)	Clash overlap (Å)
1:A:27:SER:N	1:A:31:GLN:HE21	1.96	0.57
1:C:232:ASP:OD2	1:C:271:TYR:OH	2.21	0.56
1:B:145:ILE:HG13	5:B:1905:HOH:O	2.06	0.56
1:B:208:HIS:HB3	5:B:1819:HOH:O	2.06	0.56
1:B:46[B]:ARG:NH2	5:B:1979:HOH:O	2.38	0.55
1:A:97:GLU:OE2	5:A:2222:HOH:O	2.18	0.55
1:A:99:VAL:HG22	1:A:195:PRO:HB2	1.89	0.55
1:C:13:LEU:HD13	1:C:108:SER:HB3	1.89	0.55
1:B:32:ARG:HG3	1:B:90:LEU:HD13	1.89	0.54
1:B:271:TYR:CZ	1:B:322:ILE:HD11	2.43	0.54
1:C:111:ARG:O	1:C:114:PRO:HD2	2.07	0.54
1:B:53:LYS:HB2	1:B:60:PHE:CD1	2.43	0.54
1:A:255:ARG:HG3	1:A:255:ARG:HH11	1.73	0.54
1:C:97:GLU:OE2	1:C:121:HIS:CD2	2.62	0.53
1:B:130:ASN:O	1:B:134:GLU:HG2	2.09	0.53
1:C:53:LYS:HB2	1:C:60:PHE:CD1	2.43	0.53
1:A:255:ARG:HG3	1:A:255:ARG:NH1	2.24	0.53
1:A:53:LYS:HA	1:A:60:PHE:HB2	1.89	0.53
1:C:209:ASN:ND2	1:C:265:TYR:OH	2.38	0.52
1:C:50:ILE:O	1:C:53:LYS:HB3	2.08	0.52
1:B:243:PHE:HE2	1:B:247:MET:HE1	1.74	0.52
1:C:79:TYR:O	1:C:83:VAL:HG13	2.09	0.52
1:C:155:GLU:CG	1:C:157:THR:HG23	2.34	0.52
1:A:11:ASP:OD2	1:A:255:ARG:NH2	2.40	0.52
1:A:61:GLY:O	1:A:65:LYS:HG3	2.10	0.52
1:C:130:ASN:HA	1:C:133:VAL:HG22	1.92	0.52
1:C:238:GLN:NE2	5:C:1920:HOH:O	2.36	0.51
1:C:141:ARG:O	1:C:147:ARG:HD3	2.10	0.51
1:B:145:ILE:HG12	5:B:1830:HOH:O	2.09	0.51
1:A:131:GLU:CD	1:A:131:GLU:H	2.14	0.51
1:C:32:ARG:HG3	1:C:90:LEU:HD13	1.91	0.51
1:B:246:ILE:O	1:B:250:ASN:HB2	2.11	0.51
1:B:323:LEU:HD23	5:B:1999:HOH:O	2.10	0.51
1:A:86:ASP:O	1:A:90:LEU:HG	2.11	0.50
1:C:247:MET:CE	1:C:262:LEU:HD21	2.41	0.50
1:A:51:THR:HB	1:A:139:ILE:HG23	1.93	0.50
1:B:317:MET:CE	1:B:318:GLN:HE21	2.24	0.50
1:A:29:GLY:HA3	5:A:2233:HOH:O	2.12	0.50
1:A:271:TYR:CE2	1:A:322:ILE:HD11	2.46	0.50
1:C:27:SER:OG	1:C:298:GLU:OE2	2.30	0.49
1:C:116:LEU:HD11	1:C:169:TYR:HB2	1.94	0.49

Continued on next page...

Continued from previous page...

Atom-1	Atom-2	Interatomic distance (Å)	Clash overlap (Å)
1:C:248:GLN:HG2	5:C:1851:HOH:O	2.12	0.49
1:A:243:PHE:HE2	1:A:247:MET:HE1	1.78	0.48
1:B:128:ASP:HB3	1:B:133:VAL:HG13	1.95	0.48
1:C:317:MET:HE2	1:C:318:GLN:HE21	1.71	0.48
1:A:36:ASP:H	1:B:117:GLN:NE2	2.10	0.48
1:A:299:ARG:NH2	5:A:2190:HOH:O	2.43	0.48
1:A:4:ILE:HG22	1:A:257:LEU:HD13	1.96	0.48
1:C:76:TYR:HB3	1:C:314:LEU:HD11	1.95	0.48
1:C:247:MET:HE2	1:C:262:LEU:HD21	1.94	0.48
1:A:191:LYS:HB2	1:A:194:ILE:HG13	1.96	0.48
1:A:29:GLY:CA	5:A:2233:HOH:O	2.62	0.48
1:B:39:LYS:HE3	1:B:43:GLU:OE2	2.14	0.47
1:B:155:GLU:O	1:B:157:THR:HG23	2.14	0.47
1:C:251:LEU:HD13	1:C:257:LEU:HD23	1.96	0.47
1:A:170:LYS:NZ	5:A:2063:HOH:O	2.44	0.47
1:B:154:LYS:NZ	5:B:1983:HOH:O	2.18	0.47
1:A:174:CYS:HA	1:A:181:GLU:OE2	2.15	0.47
1:A:247:MET:HE3	1:A:262:LEU:CD2	2.43	0.47
1:B:247:MET:HE3	1:B:262:LEU:HD22	1.96	0.47
1:C:36:ASP:O	1:C:40:LYS:HG3	2.15	0.47
1:B:122:LEU:O	1:B:168:ARG:HD2	2.15	0.47
1:C:192:ARG:NH2	1:C:222:LYS:HA	2.30	0.47
1:C:73:VAL:HG12	1:C:317:MET:CE	2.45	0.47
1:C:113:LEU:HD22	1:C:149:SER:OG	2.14	0.47
1:C:216:ILE:HA	1:C:228:TRP:CH2	2.50	0.47
1:C:316:VAL:HG21	5:C:1881:HOH:O	2.15	0.46
1:A:141:ARG:CZ	1:A:156:ASP:HA	2.45	0.46
1:B:243:PHE:CE2	1:B:247:MET:HE1	2.50	0.46
1:C:213:GLN:HE21	1:C:217:ASN:ND2	2.14	0.46
1:C:170:LYS:HD3	1:C:189:CYS:HB2	1.97	0.46
1:C:243:PHE:HE2	1:C:247:MET:HE1	1.80	0.46
1:C:322:ILE:C	1:C:322:ILE:HD12	2.36	0.46
1:A:313:GLU:OE1	5:A:2219:HOH:O	2.20	0.46
1:C:143:SER:CB	1:C:146:LEU:HD12	2.45	0.46
1:C:15:CYS:SG	1:C:74:MET:CE	3.04	0.46
1:B:290:PHE:HA	1:B:294:ILE:HG12	1.99	0.45
1:C:263:MET:HA	1:C:263:MET:CE	2.43	0.45
1:A:247:MET:CE	1:A:262:LEU:HD21	2.44	0.45
1:A:241:ASP:OD2	1:A:320:HIS:NE2	2.30	0.45
1:C:13:LEU:HD23	1:C:63:VAL:HG21	1.99	0.44
1:C:239:PRO:HA	5:C:1919:HOH:O	2.17	0.44

Continued on next page...

Continued from previous page...

Atom-1	Atom-2	Interatomic distance (Å)	Clash overlap (Å)
1:B:2:GLU:HG3	5:B:2002:HOH:O	2.18	0.44
1:B:325:LYS:HE3	1:B:325:LYS:HB2	1.81	0.44
1:A:117:GLN:NE2	1:B:36:ASP:H	2.12	0.44
1:B:96:ASN:O	1:B:99:VAL:HG23	2.17	0.44
1:C:20:ILE:CD1	1:C:45:HIS:CG	3.00	0.44
1:B:193[B]:GLU:CG	5:B:1988:HOH:O	2.50	0.44
1:B:268:LYS:NZ	5:B:1962:HOH:O	2.43	0.44
1:B:3:ARG:HG3	5:B:1984:HOH:O	2.17	0.44
1:B:243:PHE:CE2	1:B:247:MET:CE	3.00	0.44
1:C:96:ASN:N	1:C:96:ASN:HD22	2.16	0.44
1:A:88:ALA:HB2	1:A:325:LYS:HD3	2.00	0.43
1:B:317:MET:HE3	1:B:318:GLN:NE2	2.33	0.43
1:A:159:LYS:O	1:A:160:SER:C	2.56	0.43
1:C:35:VAL:HG12	1:C:39:LYS:HE2	1.99	0.43
1:A:222:LYS:HE3	5:A:2170:HOH:O	2.18	0.43
1:A:96:ASN:HB2	1:A:99:VAL:HG21	1.99	0.43
1:C:133:VAL:HG21	1:C:173:ALA:HB2	2.00	0.43
1:C:4:ILE:HG23	1:C:255:ARG:HG2	2.01	0.43
1:B:209:ASN:ND2	1:B:265:TYR:OH	2.52	0.43
1:C:176:LEU:HD23	1:C:176:LEU:HA	1.81	0.43
1:B:101:VAL:HG22	1:B:197:ILE:HB	2.00	0.43
1:A:29:GLY:N	5:A:2233:HOH:O	2.50	0.43
1:A:71:PHE:N	1:A:71:PHE:CD2	2.87	0.42
1:C:119:PHE:HA	1:C:120:PRO:HD3	1.82	0.42
1:C:290:PHE:O	1:C:299:ARG:NH1	2.53	0.42
1:B:177:ASN:HD22	1:B:211:GLU:HB3	1.85	0.42
1:B:269:GLU:O	5:B:1859:HOH:O	2.22	0.42
1:C:199:ILE:HD13	1:C:199:ILE:HG21	1.84	0.42
1:A:109:ASP:OD2	1:A:111:ARG:NH1	2.53	0.42
1:A:216:ILE:HA	1:A:228:TRP:CH2	2.54	0.42
1:C:89:ILE:HD11	1:C:199:ILE:HD11	2.01	0.42
1:C:325:LYS:HE3	1:C:325:LYS:HB2	1.91	0.42
1:B:73:VAL:O	1:B:317:MET:HE1	2.19	0.41
1:C:36:ASP:OD2	1:C:40:LYS:HE3	2.20	0.41
1:C:54:LYS:HE3	1:C:142:GLU:CD	2.40	0.41
1:C:243:PHE:CE2	1:C:247:MET:CE	3.03	0.41
1:A:56:SER:HB3	1:A:59:ALA:HB3	2.02	0.41
1:B:90:LEU:O	1:B:94:VAL:HG23	2.21	0.41
1:A:122:LEU:O	1:A:168:ARG:HD2	2.20	0.41
1:C:6:GLN:HE21	1:C:129:TYR:HB3	1.85	0.41
1:C:207:MET:HE2	1:C:212:SER:CA	2.50	0.41

Continued on next page...

Continued from previous page...

Atom-1	Atom-2	Interatomic distance (Å)	Clash overlap (Å)
1:C:222:LYS:HB3	1:C:222:LYS:HE3	1.86	0.41
1:A:164:ILE:O	1:A:170:LYS:HA	2.21	0.41
1:A:300:LYS:HG3	2:A:1001:PO4:O4	2.20	0.41
1:B:242:ARG:NH1	1:B:242:ARG:CB	2.77	0.41
1:B:290:PHE:O	1:B:299:ARG:NH2	2.54	0.41
1:C:97:GLU:OE2	1:C:121:HIS:CG	2.74	0.41
1:C:235:GLY:HA3	1:C:263:MET:HE3	2.03	0.41
1:A:71:PHE:CZ	1:A:74:MET:HB2	2.56	0.41
1:C:300:LYS:HD2	5:C:1820:HOH:O	2.20	0.41
1:C:191:LYS:HB2	1:C:194:ILE:HD12	2.03	0.40
1:C:164:ILE:CG2	1:C:166:GLN:HB2	2.51	0.40
1:C:243:PHE:HE2	1:C:247:MET:CE	2.33	0.40
1:A:152:LEU:HD21	1:A:164:ILE:HG23	2.02	0.40
1:B:291:ASN:HA	1:B:299:ARG:NH2	2.34	0.40
1:C:179:ILE:HG21	1:C:214:LEU:HD21	2.03	0.40
1:A:22:VAL:HG11	1:A:24:TYR:HE1	1.86	0.40
1:B:152:LEU:HD21	1:B:164:ILE:HG23	2.04	0.40
1:C:33:LEU:HD22	1:C:37:LEU:HG	2.04	0.40

There are no symmetry-related clashes.

5.3 Torsion angles [i](#)

5.3.1 Protein backbone [i](#)

In the following table, the Percentiles column shows the percent Ramachandran outliers of the chain as a percentile score with respect to all X-ray entries followed by that with respect to entries of similar resolution.

The Analysed column shows the number of residues for which the backbone conformation was analysed, and the total number of residues.

Mol	Chain	Analysed	Favoured	Allowed	Outliers	Percentiles	
1	A	324/327 (99%)	310 (96%)	13 (4%)	1 (0%)	41	31
1	B	326/327 (100%)	318 (98%)	7 (2%)	1 (0%)	41	31
1	C	324/327 (99%)	312 (96%)	11 (3%)	1 (0%)	41	31
All	All	974/981 (99%)	940 (96%)	31 (3%)	3 (0%)	41	31

All (3) Ramachandran outliers are listed below:

Mol	Chain	Res	Type
1	B	156	ASP
1	C	97	GLU
1	A	273	SER

5.3.2 Protein sidechains ⓘ

In the following table, the Percentiles column shows the percent sidechain outliers of the chain as a percentile score with respect to all X-ray entries followed by that with respect to entries of similar resolution.

The Analysed column shows the number of residues for which the sidechain conformation was analysed, and the total number of residues.

Mol	Chain	Analysed	Rotameric	Outliers	Percentiles	
1	A	295/295 (100%)	289 (98%)	6 (2%)	55	49
1	B	297/295 (101%)	289 (97%)	8 (3%)	44	36
1	C	295/295 (100%)	283 (96%)	12 (4%)	30	20
All	All	887/885 (100%)	861 (97%)	26 (3%)	43	33

All (26) residues with a non-rotameric sidechain are listed below:

Mol	Chain	Res	Type
1	A	112	MET
1	A	156	ASP
1	A	157	THR
1	A	159	LYS
1	A	210	ASN
1	A	322	ILE
1	B	46[A]	ARG
1	B	46[B]	ARG
1	B	57	ARG
1	B	112	MET
1	B	156	ASP
1	B	210	ASN
1	B	249	SER
1	B	300	LYS
1	C	36	ASP
1	C	96	ASN
1	C	99	VAL
1	C	111	ARG
1	C	112	MET
1	C	155	GLU

Continued on next page...

Continued from previous page...

Mol	Chain	Res	Type
1	C	157	THR
1	C	160	SER
1	C	166	GLN
1	C	203	LEU
1	C	263	MET
1	C	268	LYS

Some sidechains can be flipped to improve hydrogen bonding and reduce clashes. All (21) such sidechains are listed below:

Mol	Chain	Res	Type
1	A	7	GLN
1	A	31	GLN
1	A	117	GLN
1	A	121	HIS
1	A	177	ASN
1	A	209	ASN
1	A	210	ASN
1	A	318	GLN
1	B	117	GLN
1	B	121	HIS
1	B	177	ASN
1	B	209	ASN
1	B	210	ASN
1	B	318	GLN
1	C	96	ASN
1	C	121	HIS
1	C	177	ASN
1	C	209	ASN
1	C	217	ASN
1	C	250	ASN
1	C	318	GLN

5.3.3 RNA [i](#)

There are no RNA molecules in this entry.

5.4 Non-standard residues in protein, DNA, RNA chains [i](#)

3 non-standard protein/DNA/RNA residues are modelled in this entry.

In the following table, the Counts columns list the number of bonds (or angles) for which Mogul

statistics could be retrieved, the number of bonds (or angles) that are observed in the model and the number of bonds (or angles) that are defined in the Chemical Component Dictionary. The Link column lists molecule types, if any, to which the group is linked. The Z score for a bond length (or angle) is the number of standard deviations the observed value is removed from the expected value. A bond length (or angle) with $|Z| > 2$ is considered an outlier worth inspection. RMSZ is the root-mean-square of all Z scores of the bond lengths (or angles).

Mol	Type	Chain	Res	Link	Bond lengths			Bond angles		
					Counts	RMSZ	# $ Z > 2$	Counts	RMSZ	# $ Z > 2$
1	SMC	B	202	1	5,6,7	0.52	0	2,6,8	2.97	2 (100%)
1	SMC	C	202	1	5,6,7	1.20	1 (20%)	2,6,8	1.41	0
1	SMC	A	202	1	5,6,7	0.64	0	2,6,8	2.65	1 (50%)

In the following table, the Chirals column lists the number of chiral outliers, the number of chiral centers analysed, the number of these observed in the model and the number defined in the Chemical Component Dictionary. Similar counts are reported in the Torsion and Rings columns. '-' means no outliers of that kind were identified.

Mol	Type	Chain	Res	Link	Chirals	Torsions	Rings
1	SMC	B	202	1	-	0/3/5/7	-
1	SMC	C	202	1	-	0/3/5/7	-
1	SMC	A	202	1	-	0/3/5/7	-

All (1) bond length outliers are listed below:

Mol	Chain	Res	Type	Atoms	Z	Observed(Å)	Ideal(Å)
1	C	202	SMC	CB-SG	-2.01	1.78	1.80

All (3) bond angle outliers are listed below:

Mol	Chain	Res	Type	Atoms	Z	Observed(°)	Ideal(°)
1	B	202	SMC	CS-SG-CB	3.36	107.48	101.30
1	A	202	SMC	CS-SG-CB	3.27	107.31	101.30
1	B	202	SMC	CA-CB-SG	-2.53	109.95	114.04

There are no chirality outliers.

There are no torsion outliers.

There are no ring outliers.

No monomer is involved in short contacts.

5.5 Carbohydrates [i](#)

There are no carbohydrates in this entry.

5.6 Ligand geometry [i](#)

6 ligands are modelled in this entry.

In the following table, the Counts columns list the number of bonds (or angles) for which Mogul statistics could be retrieved, the number of bonds (or angles) that are observed in the model and the number of bonds (or angles) that are defined in the Chemical Component Dictionary. The Link column lists molecule types, if any, to which the group is linked. The Z score for a bond length (or angle) is the number of standard deviations the observed value is removed from the expected value. A bond length (or angle) with $|Z| > 2$ is considered an outlier worth inspection. RMSZ is the root-mean-square of all Z scores of the bond lengths (or angles).

Mol	Type	Chain	Res	Link	Bond lengths			Bond angles		
					Counts	RMSZ	# $ Z > 2$	Counts	RMSZ	# $ Z > 2$
3	SAH	A	1801	-	21,28,28	1.20	3 (14%)	20,40,40	2.20	5 (25%)
3	SAH	B	1802	-	21,28,28	1.24	3 (14%)	20,40,40	2.17	7 (35%)
4	GOL	A	2002	-	5,5,5	0.56	0	5,5,5	0.68	0
3	SAH	C	1803	-	21,28,28	1.45	3 (14%)	20,40,40	2.12	3 (15%)
4	GOL	A	2003	-	5,5,5	0.45	0	5,5,5	1.10	0
2	PO4	A	1001	-	4,4,4	0.99	0	6,6,6	0.58	0

In the following table, the Chirals column lists the number of chiral outliers, the number of chiral centers analysed, the number of these observed in the model and the number defined in the Chemical Component Dictionary. Similar counts are reported in the Torsion and Rings columns. '-' means no outliers of that kind were identified.

Mol	Type	Chain	Res	Link	Chirals	Torsions	Rings
4	GOL	A	2003	-	-	0/4/4/4	-
3	SAH	C	1803	-	-	3/7/31/31	0/3/3/3
3	SAH	A	1801	-	-	0/7/31/31	0/3/3/3
4	GOL	A	2002	-	-	0/4/4/4	-
3	SAH	B	1802	-	-	0/7/31/31	0/3/3/3

All (9) bond length outliers are listed below:

Mol	Chain	Res	Type	Atoms	Z	Observed(Å)	Ideal(Å)
3	C	1803	SAH	C2-N3	4.31	1.39	1.32
3	A	1801	SAH	C2-N3	3.21	1.37	1.32
3	B	1802	SAH	C2-N3	3.17	1.37	1.32

Continued on next page...

Continued from previous page...

Mol	Chain	Res	Type	Atoms	Z	Observed(Å)	Ideal(Å)
3	C	1803	SAH	C2-N1	3.11	1.39	1.33
3	C	1803	SAH	C4-N3	2.98	1.39	1.35
3	B	1802	SAH	C4-N3	2.65	1.39	1.35
3	A	1801	SAH	C2-N1	2.44	1.38	1.33
3	B	1802	SAH	C2-N1	2.18	1.38	1.33
3	A	1801	SAH	O4'-C1'	-2.06	1.38	1.41

All (15) bond angle outliers are listed below:

Mol	Chain	Res	Type	Atoms	Z	Observed(°)	Ideal(°)
3	C	1803	SAH	N3-C2-N1	-5.90	119.46	128.68
3	A	1801	SAH	O4'-C1'-C2'	-5.59	98.75	106.93
3	B	1802	SAH	N3-C2-N1	-5.59	119.95	128.68
3	A	1801	SAH	N3-C2-N1	-4.84	121.12	128.68
3	C	1803	SAH	C5'-SD-CG	-4.68	88.22	102.27
3	C	1803	SAH	O4'-C1'-C2'	-4.32	100.61	106.93
3	A	1801	SAH	C5'-SD-CG	-4.07	90.05	102.27
3	B	1802	SAH	C1'-N9-C4	-3.49	120.50	126.64
3	B	1802	SAH	C2-N1-C6	2.81	123.56	118.75
3	B	1802	SAH	O4'-C4'-C3'	2.72	110.49	105.11
3	B	1802	SAH	O4'-C4'-C5'	-2.64	102.03	108.83
3	B	1802	SAH	C3'-C2'-C1'	2.62	104.93	100.98
3	A	1801	SAH	C3'-C2'-C1'	2.13	104.19	100.98
3	B	1802	SAH	O2'-C2'-C1'	2.13	118.71	110.85
3	A	1801	SAH	C2-N1-C6	2.04	122.23	118.75

There are no chirality outliers.

All (3) torsion outliers are listed below:

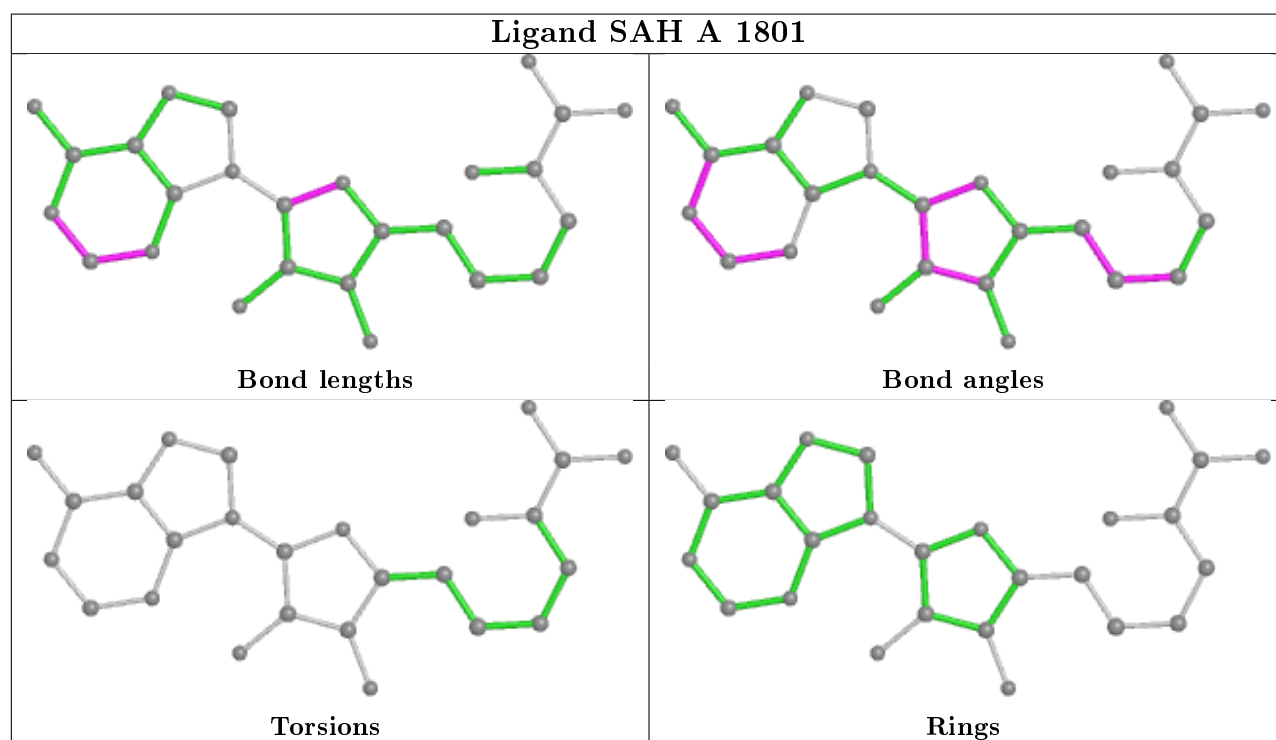
Mol	Chain	Res	Type	Atoms
3	C	1803	SAH	N-CA-CB-CG
3	C	1803	SAH	CB-CG-SD-C5'
3	C	1803	SAH	C-CA-CB-CG

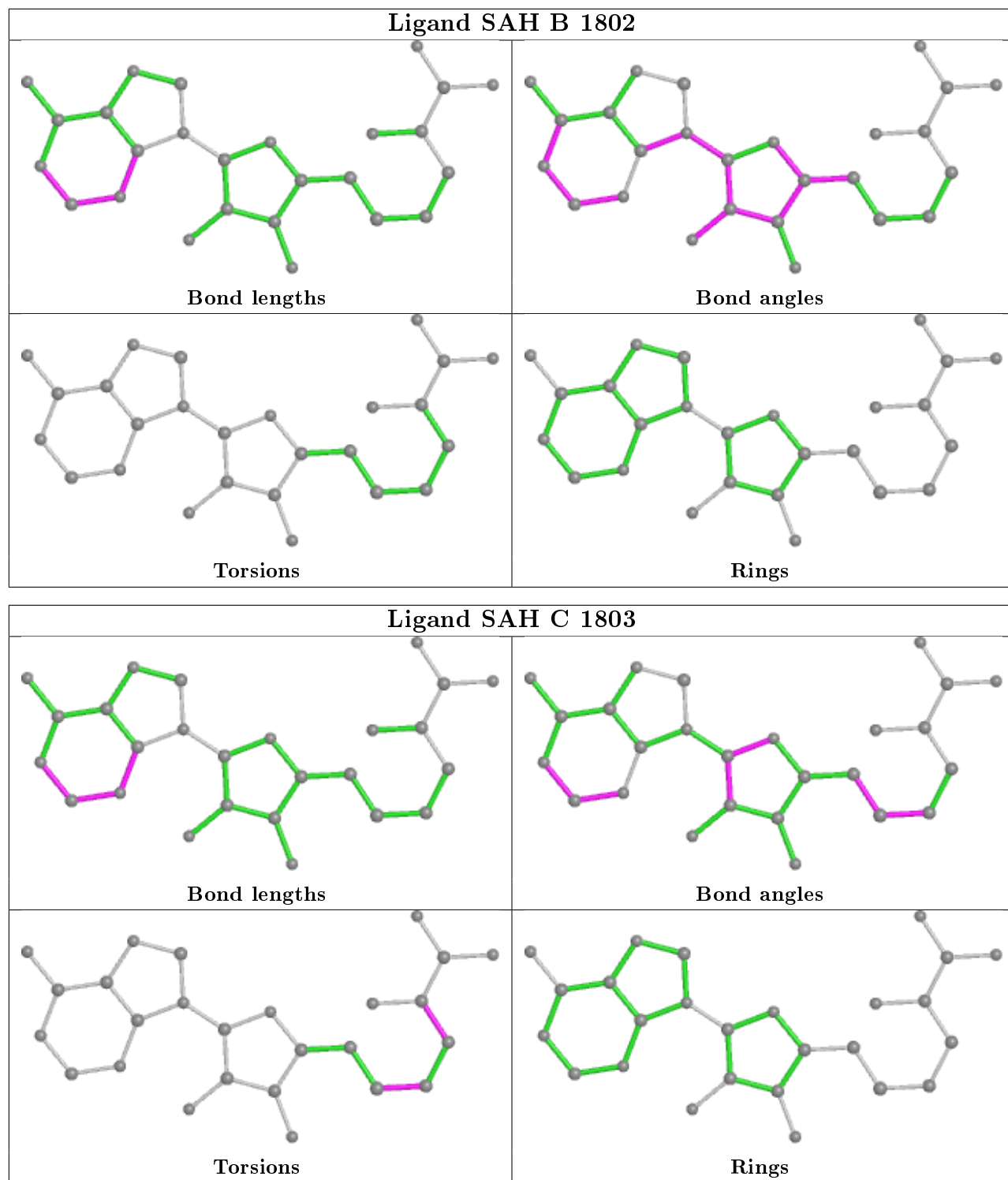
There are no ring outliers.

2 monomers are involved in 2 short contacts:

Mol	Chain	Res	Type	Clashes	Symm-Clashes
4	A	2003	GOL	1	0
2	A	1001	PO4	1	0

The following is a two-dimensional graphical depiction of Mogul quality analysis of bond lengths, bond angles, torsion angles, and ring geometry for all instances of the Ligand of Interest. In addition, ligands with molecular weight > 250 and outliers as shown on the validation Tables will also be included. For torsion angles, if less than 5% of the Mogul distribution of torsion angles is within 10 degrees of the torsion angle in question, then that torsion angle is considered an outlier. Any bond that is central to one or more torsion angles identified as an outlier by Mogul will be highlighted in the graph. For rings, the root-mean-square deviation (RMSD) between the ring in question and similar rings identified by Mogul is calculated over all ring torsion angles. If the average RMSD is greater than 60 degrees and the minimal RMSD between the ring in question and any Mogul-identified rings is also greater than 60 degrees, then that ring is considered an outlier. The outliers are highlighted in purple. The color gray indicates Mogul did not find sufficient equivalents in the CSD to analyse the geometry.





5.7 Other polymers [i](#)

There are no such residues in this entry.

5.8 Polymer linkage issues ⓘ

There are no chain breaks in this entry.

6 Fit of model and data [i](#)

6.1 Protein, DNA and RNA chains [i](#)

In the following table, the column labelled ‘#RSRZ> 2’ contains the number (and percentage) of RSRZ outliers, followed by percent RSRZ outliers for the chain as percentile scores relative to all X-ray entries and entries of similar resolution. The OWAB column contains the minimum, median, 95th percentile and maximum values of the occupancy-weighted average B-factor per residue. The column labelled ‘Q< 0.9’ lists the number of (and percentage) of residues with an average occupancy less than 0.9.

Mol	Chain	Analysed	<RSRZ>	#RSRZ>2		OWAB(Å ²)	Q<0.9
1	A	326/327 (99%)	-0.47	0	100 100	7, 14, 28, 41	0
1	B	326/327 (99%)	-0.45	0	100 100	7, 14, 30, 43	0
1	C	326/327 (99%)	-0.10	8 (2%)	57 60	5, 15, 34, 41	0
All	All	978/981 (99%)	-0.34	8 (0%)	86 87	5, 14, 32, 43	0

All (8) RSRZ outliers are listed below:

Mol	Chain	Res	Type	RSRZ
1	C	257	LEU	2.9
1	C	242	ARG	2.9
1	C	255	ARG	2.9
1	C	249	SER	2.8
1	C	239	PRO	2.7
1	C	71	PHE	2.2
1	C	256	ASN	2.1
1	C	184	ARG	2.0

6.2 Non-standard residues in protein, DNA, RNA chains [i](#)

In the following table, the Atoms column lists the number of modelled atoms in the group and the number defined in the chemical component dictionary. The B-factors column lists the minimum, median, 95th percentile and maximum values of B factors of atoms in the group. The column labelled ‘Q< 0.9’ lists the number of atoms with occupancy less than 0.9.

Mol	Type	Chain	Res	Atoms	RSCC	RSR	B-factors(Å ²)	Q<0.9
1	SMC	B	202	7/8	0.97	0.08	6,10,12,16	0
1	SMC	A	202	7/8	0.97	0.08	9,11,12,17	0
1	SMC	C	202	7/8	0.98	0.07	7,9,11,15	0

6.3 Carbohydrates [i](#)

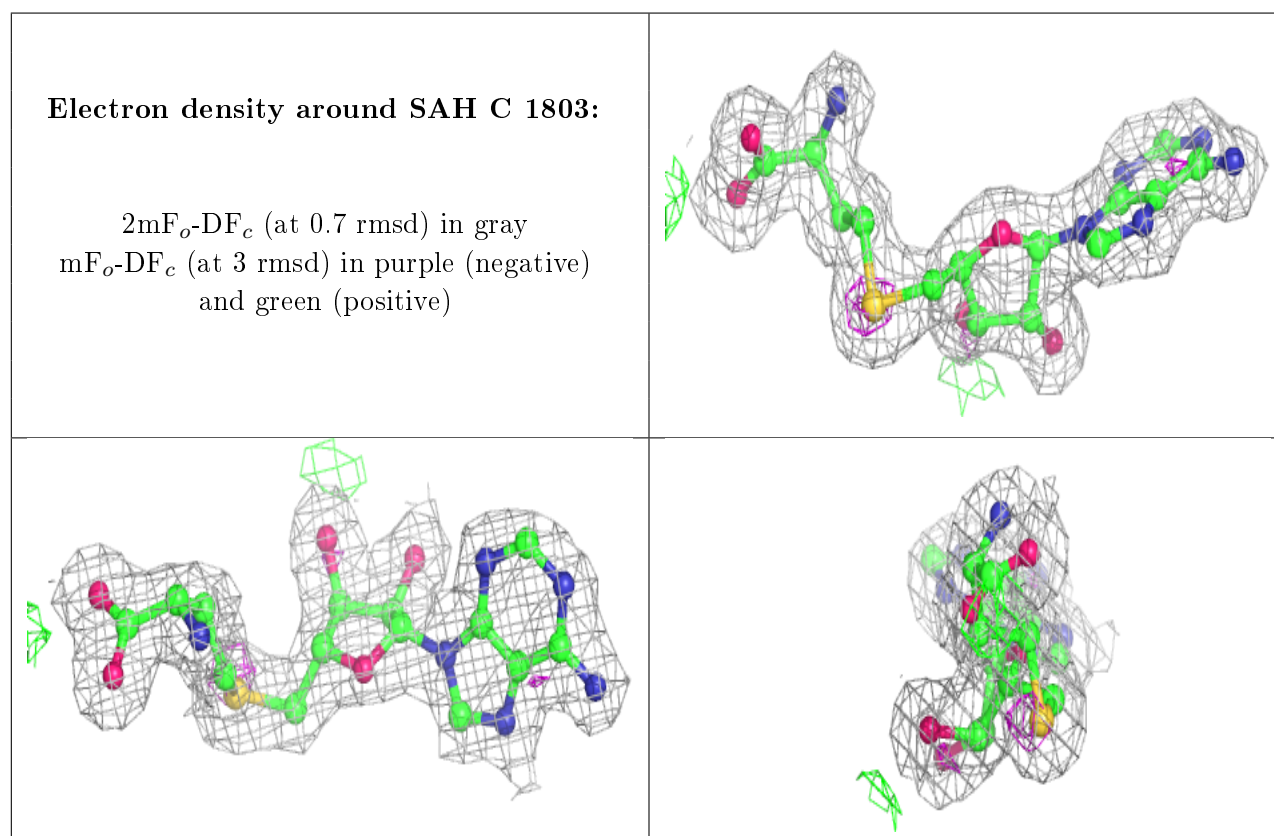
There are no carbohydrates in this entry.

6.4 Ligands [i](#)

In the following table, the Atoms column lists the number of modelled atoms in the group and the number defined in the chemical component dictionary. The B-factors column lists the minimum, median, 95th percentile and maximum values of B factors of atoms in the group. The column labelled 'Q< 0.9' lists the number of atoms with occupancy less than 0.9.

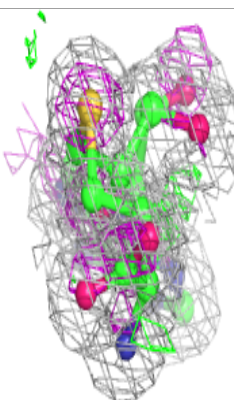
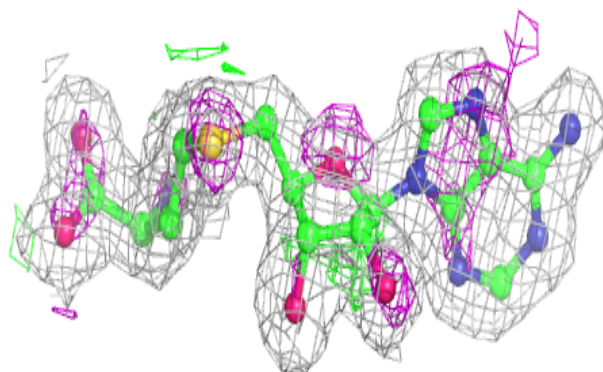
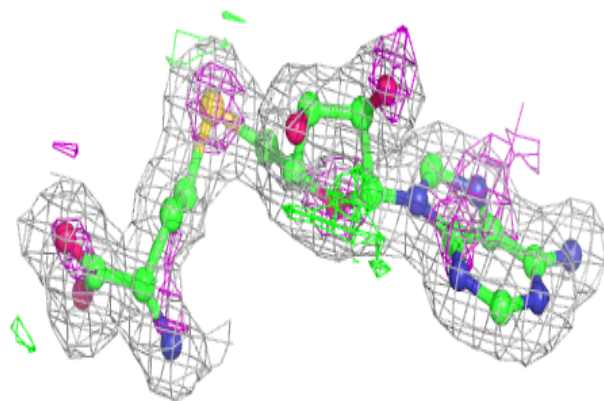
Mol	Type	Chain	Res	Atoms	RSCC	RSR	B-factors(\AA^2)	Q<0.9
4	GOL	A	2002	6/6	0.91	0.09	9,14,15,20	0
4	GOL	A	2003	6/6	0.92	0.09	22,27,28,30	0
2	PO4	A	1001	5/5	0.92	0.17	47,48,51,51	0
3	SAH	C	1803	26/26	0.97	0.07	10,17,22,23	0
3	SAH	A	1801	26/26	0.98	0.06	2,4,6,8	0
3	SAH	B	1802	26/26	0.99	0.05	2,4,6,8	0

The following is a graphical depiction of the model fit to experimental electron density of all instances of the Ligand of Interest. In addition, ligands with molecular weight > 250 and outliers as shown on the geometry validation Tables will also be included. Each fit is shown from different orientation to approximate a three-dimensional view.

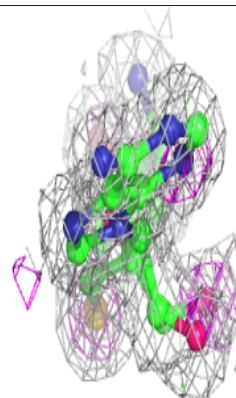
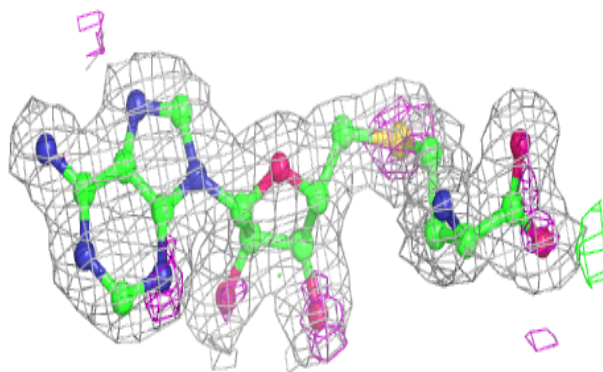
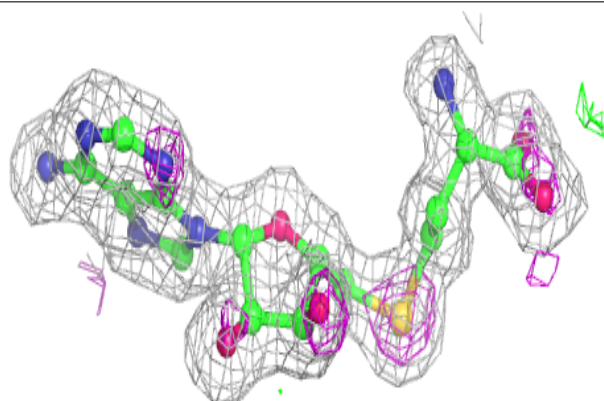


Electron density around SAH A 1801:

$2mF_o-DF_c$ (at 0.7 rmsd) in gray
 mF_o-DF_c (at 3 rmsd) in purple (negative)
and green (positive)

**Electron density around SAH B 1802:**

$2mF_o-DF_c$ (at 0.7 rmsd) in gray
 mF_o-DF_c (at 3 rmsd) in purple (negative)
and green (positive)



6.5 Other polymers [i](#)

There are no such residues in this entry.