



# Full wwPDB X-ray Structure Validation Report ⓘ

Sep 21, 2020 – 05:07 PM BST

PDB ID : 1OCB  
Title : Structure of the wild-type cellobiohydrolase Cel6A from *Humicola insolens* in complex with a fluorescent substrate  
Authors : Varrot, A.; Frandsen, T.P.; Von Ossowski, I.; Boyer, V.; Driguez, H.; Schulein, M.; Davies, G.J.  
Deposited on : 2003-02-07  
Resolution : 1.75 Å(reported)

This is a Full wwPDB X-ray Structure Validation Report for a publicly released PDB entry.

We welcome your comments at [validation@mail.wwpdb.org](mailto:validation@mail.wwpdb.org)

A user guide is available at

<https://www.wwpdb.org/validation/2017/XrayValidationReportHelp>

with specific help available everywhere you see the ⓘ symbol.

---

The following versions of software and data (see [references ⓘ](#)) were used in the production of this report:

MolProbity : 4.02b-467  
Mogul : 1.8.5 (274361), CSD as541be (2020)  
Xtriage (Phenix) : 1.13  
EDS : 2.14.6  
buster-report : 1.1.7 (2018)  
Percentile statistics : 20191225.v01 (using entries in the PDB archive December 25th 2019)  
Refmac : 5.8.0158  
CCP4 : 7.0.044 (Gargrove)  
Ideal geometry (proteins) : Engh & Huber (2001)  
Ideal geometry (DNA, RNA) : Parkinson et al. (1996)  
Validation Pipeline (wwPDB-VP) : 2.14.6

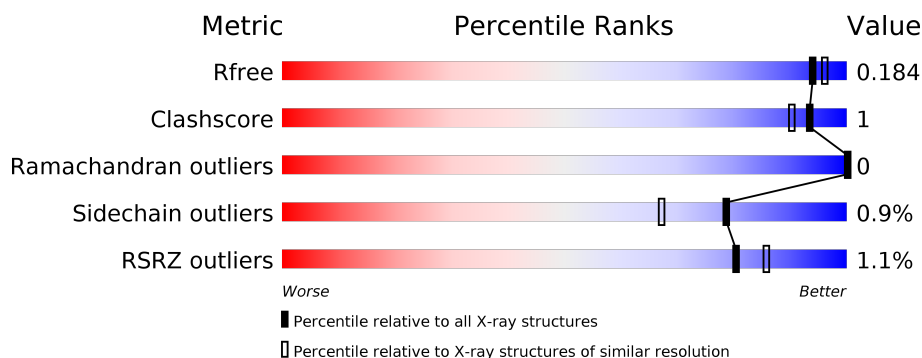
# 1 Overall quality at a glance

The following experimental techniques were used to determine the structure:

## *X-RAY DIFFRACTION*

The reported resolution of this entry is 1.75 Å.

Percentile scores (ranging between 0-100) for global validation metrics of the entry are shown in the following graphic. The table shows the number of entries on which the scores are based.



Metric	Whole archive (#Entries)	Similar resolution (#Entries, resolution range(Å))
$R_{free}$	130704	2340 (1.76-1.76)
Clashscore	141614	2466 (1.76-1.76)
Ramachandran outliers	138981	2437 (1.76-1.76)
Sidechain outliers	138945	2437 (1.76-1.76)
RSRZ outliers	127900	2298 (1.76-1.76)

The table below summarises the geometric issues observed across the polymeric chains and their fit to the electron density. The red, orange, yellow and green segments on the lower bar indicate the fraction of residues that contain outliers for  $\geq 3$ , 2, 1 and 0 types of geometric quality criteria respectively. A grey segment represents the fraction of residues that are not modelled. The numeric value for each fraction is indicated below the corresponding segment, with a dot representing fractions  $\leq 5\%$ . The upper red bar (where present) indicates the fraction of residues that have poor fit to the electron density. The numeric value is given above the bar.

Mol	Chain	Length	Quality of chain
1	A	362	<div> <div>%</div> <div> <div></div> <div>94%</div> <div>5%</div> </div> </div>
1	B	362	<div> <div>%</div> <div> <div></div> <div>96%</div> <div>.</div> </div> </div>
2	C	4	<div> <div></div> <div>100%</div> </div>
2	E	4	<div> <div>25%</div> <div>50%</div> <div>25%</div> </div>
3	D	3	<div> <div></div> <div>100%</div> </div>
3	F	3	<div> <div></div> <div>100%</div> </div>

## 2 Entry composition

There are 7 unique types of molecules in this entry. The entry contains 6607 atoms, of which 0 are hydrogens and 0 are deuteriums.

In the tables below, the ZeroOcc column contains the number of atoms modelled with zero occupancy, the AltConf column contains the number of residues with at least one atom in alternate conformation and the Trace column contains the number of residues modelled with at most 2 atoms.

- Molecule 1 is a protein called CELLOBIOHYDROLASE II.

Mol	Chain	Residues	Atoms					ZeroOcc	AltConf	Trace
1	A	361	Total	C	N	O	S	0	7	0
			2837	1797	492	538	10			
1	B	361	Total	C	N	O	S	0	2	0
			2825	1791	491	533	10			

- Molecule 2 is an oligosaccharide called 4-amino-4-deoxy-alpha-D-glucopyranose-(1-4)-beta-D-glucopyranose-(1-4)-beta-D-glucopyranose-(1-4)-methyl 4-thio-beta-D-glucopyranoside.

Mol	Chain	Residues	Atoms					ZeroOcc	AltConf	Trace
2	C	4	Total	C	N	O	S	0	0	0
			46	25	1	19	1			
2	E	4	Total	C	N	O	S	0	0	0
			46	25	1	19	1			

- Molecule 3 is an oligosaccharide called beta-D-glucopyranose-(1-4)-beta-D-glucopyranose-(1-4)-methyl 4-thio-beta-D-glucopyranoside.

Mol	Chain	Residues	Atoms				ZeroOcc	AltConf	Trace
3	D	3	Total	C	O	S	0	0	0
			35	19	15	1			
3	F	3	Total	C	O	S	0	0	0
			35	19	15	1			

- Molecule 4 is 2-acetamido-2-deoxy-beta-D-glucopyranose (three-letter code: NAG) (formula: C<sub>8</sub>H<sub>15</sub>NO<sub>6</sub>).



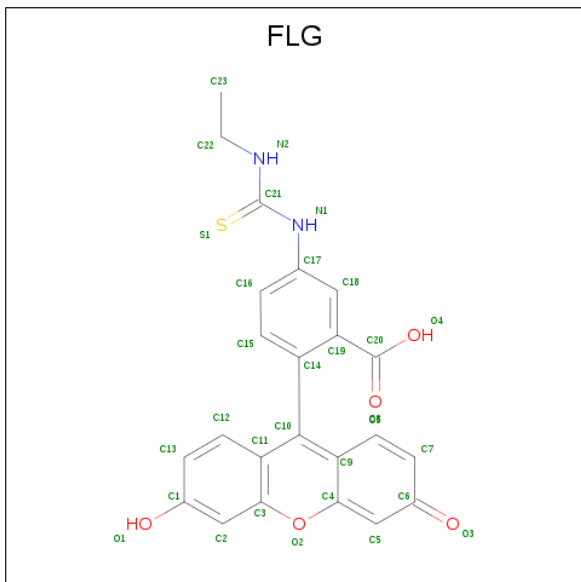
Mol	Chain	Residues	Atoms				ZeroOcc	AltConf
4	A	1	Total	C	N	O	0	0
			14	8	1	5		
4	B	1	Total	C	N	O	0	0
			14	8	1	5		

- Molecule 5 is GLYCEROL (three-letter code: GOL) (formula:  $C_3H_8O_3$ ).



Mol	Chain	Residues	Atoms			ZeroOcc	AltConf
5	A	1	Total	C	O	0	0
			6	3	3		
5	B	1	Total	C	O	0	0
			6	3	3		

- Molecule 6 is FLUORESCEINYLTHTIOUREIDO (three-letter code: FLG) (formula:  $C_{23}H_{18}N_2O_5S$ ).



Mol	Chain	Residues	Atoms					ZeroOcc	AltConf
6	B	1	Total	C	N	O	S	0	0
			28	21	1	5	1		

- Molecule 7 is water.

Mol	Chain	Residues	Atoms		ZeroOcc	AltConf
7	A	404	Total	O	0	39
			404	404		
7	B	311	Total	O	0	15
			311	311		

### 3 Residue-property plots [i](#)

These plots are drawn for all protein, RNA, DNA and oligosaccharide chains in the entry. The first graphic for a chain summarises the proportions of the various outlier classes displayed in the second graphic. The second graphic shows the sequence view annotated by issues in geometry and electron density. Residues are color-coded according to the number of geometric quality criteria for which they contain at least one outlier: green = 0, yellow = 1, orange = 2 and red = 3 or more. A red dot above a residue indicates a poor fit to the electron density ( $RSRZ > 2$ ). Stretches of 2 or more consecutive residues without any outlier are shown as a green connector. Residues present in the sample, but not in the model, are shown in grey.

- Molecule 1: CELLOBIOHYDROLASE II



- Molecule 1: CELLOBIOHYDROLASE II



- Molecule 2: 4-amino-4-deoxy-alpha-D-glucopyranose-(1-4)-beta-D-glucopyranose-(1-4)-beta-D-glucopyranose-(1-4)-methyl 4-thio-beta-D-glucopyranoside



- Molecule 2: 4-amino-4-deoxy-alpha-D-glucopyranose-(1-4)-beta-D-glucopyranose-(1-4)-beta-D-glucopyranose-(1-4)-methyl 4-thio-beta-D-glucopyranoside



- Molecule 3: beta-D-glucopyranose-(1-4)-beta-D-glucopyranose-(1-4)-methyl 4-thio-beta-D-glucopyranoside



- Molecule 3: beta-D-glucopyranose-(1-4)-beta-D-glucopyranose-(1-4)-methyl 4-thio-beta-D-glucopyranoside

Chain F:

100%

GTM1  
B6C2  
B6C3

## 4 Data and refinement statistics

Property	Value	Source
Space group	P 1 21 1	Depositor
Cell constants a, b, c, $\alpha$ , $\beta$ , $\gamma$	49.76Å 155.68Å 51.22Å 90.00° 118.42° 90.00°	Depositor
Resolution (Å)	38.92 – 1.75 38.15 – 1.74	Depositor EDS
% Data completeness (in resolution range)	97.7 (38.92-1.75) 97.0 (38.15-1.74)	Depositor EDS
$R_{merge}$	0.04	Depositor
$R_{sym}$	(Not available)	Depositor
$\langle I/\sigma(I) \rangle$ <sup>1</sup>	2.05 (at 1.74Å)	Xtriage
Refinement program	REFMAC 5.1.24	Depositor
R, $R_{free}$	0.133 , 0.168 0.151 , 0.184	Depositor DCC
$R_{free}$ test set	6491 reflections (5.04%)	wwPDB-VP
Wilson B-factor (Å <sup>2</sup> )	14.1	Xtriage
Anisotropy	0.674	Xtriage
Bulk solvent $k_{sol}$ (e/Å <sup>3</sup> ), $B_{sol}$ (Å <sup>2</sup> )	0.36 , 45.6	EDS
L-test for twinning <sup>2</sup>	$\langle  L  \rangle = 0.48$ , $\langle L^2 \rangle = 0.31$	Xtriage
Estimated twinning fraction	0.007 for -h-l,k,h 0.007 for l,k,-h-l 0.026 for h,-k,-h-l 0.037 for -h-l,-k,l 0.026 for l,-k,h	Xtriage
$F_o, F_c$ correlation	0.96	EDS
Total number of atoms	6607	wwPDB-VP
Average B, all atoms (Å <sup>2</sup> )	11.0	wwPDB-VP

Xtriage's analysis on translational NCS is as follows: *The largest off-origin peak in the Patterson function is 5.06% of the height of the origin peak. No significant pseudotranslation is detected.*

<sup>1</sup>Intensities estimated from amplitudes.

<sup>2</sup>Theoretical values of  $\langle |L| \rangle$ ,  $\langle L^2 \rangle$  for acentric reflections are 0.5, 0.333 respectively for untwinned datasets, and 0.375, 0.2 for perfectly twinned datasets.



## 5 Model quality ⓘ

### 5.1 Standard geometry ⓘ

Bond lengths and bond angles in the following residue types are not validated in this section: GOL, BGC, NAG, GTM, GDA, FLG

The Z score for a bond length (or angle) is the number of standard deviations the observed value is removed from the expected value. A bond length (or angle) with  $|Z| > 5$  is considered an outlier worth inspection. RMSZ is the root-mean-square of all Z scores of the bond lengths (or angles).

Mol	Chain	Bond lengths		Bond angles	
		RMSZ	$\# Z  > 5$	RMSZ	$\# Z  > 5$
1	A	0.77	0/2948	0.80	4/4033 (0.1%)
1	B	0.76	1/2915 (0.0%)	0.83	4/3988 (0.1%)
All	All	0.76	1/5863 (0.0%)	0.82	8/8021 (0.1%)

All (1) bond length outliers are listed below:

Mol	Chain	Res	Type	Atoms	Z	Observed(Å)	Ideal(Å)
1	B	203	TYR	CD1-CE1	5.02	1.46	1.39

All (8) bond angle outliers are listed below:

Mol	Chain	Res	Type	Atoms	Z	Observed(°)	Ideal(°)
1	B	382	ARG	NE-CZ-NH2	-8.06	116.27	120.30
1	B	268	ASP	CB-CG-OD2	6.77	124.39	118.30
1	A	145	ASP	CB-CG-OD2	6.52	124.17	118.30
1	B	382	ARG	NE-CZ-NH1	6.21	123.41	120.30
1	A	139	ASP	CB-CG-OD2	5.34	123.10	118.30
1	A	409	ASP	CB-CG-OD1	5.16	122.94	118.30
1	B	409	ASP	CB-CG-OD2	5.15	122.94	118.30
1	A	268	ASP	CB-CG-OD2	5.06	122.86	118.30

There are no chirality outliers.

There are no planarity outliers.

### 5.2 Too-close contacts ⓘ

In the following table, the Non-H and H(model) columns list the number of non-hydrogen atoms and hydrogen atoms in the chain respectively. The H(added) column lists the number of hydrogen atoms added and optimized by MolProbity. The Clashes column lists the number of clashes within

the asymmetric unit, whereas Symm-Clashes lists symmetry related clashes.

Mol	Chain	Non-H	H(model)	H(added)	Clashes	Symm-Clashes
1	A	2837	0	2689	8	0
1	B	2825	0	2681	7	0
2	C	46	0	42	0	0
2	E	46	0	42	1	0
3	D	35	0	32	0	0
3	F	35	0	32	0	0
4	A	14	0	13	0	0
4	B	14	0	13	0	0
5	A	6	0	8	0	0
5	B	6	0	7	0	0
6	B	28	0	10	1	0
7	A	404	0	0	0	0
7	B	311	0	0	0	0
All	All	6607	0	5569	16	0

The all-atom clashscore is defined as the number of clashes found per 1000 atoms (including hydrogen atoms). The all-atom clashscore for this structure is 1.

All (16) close contacts within the same asymmetric unit are listed below, sorted by their clash magnitude.

Atom-1	Atom-2	Interatomic distance (Å)	Clash overlap (Å)
1:B:422:GLU:H	1:B:422:GLU:CD	1.90	0.74
1:B:231:MET:SD	1:B:244:ALA:HA	2.34	0.68
1:A:422:GLU:H	1:A:422:GLU:CD	2.00	0.65
6:B:460:FLG:C10	6:B:460:FLG:O5	2.53	0.56
1:A:231:MET:SD	1:A:244:ALA:HA	2.49	0.52
1:B:236:ASN:H	1:B:236:ASN:ND2	2.07	0.52
1:B:279:ALA:HB3	2:E:1:GTM:O6	2.14	0.48
1:A:383:PRO:HA	1:A:395:PHE:O	2.15	0.46
1:B:383:PRO:HA	1:B:395:PHE:O	2.14	0.46
1:B:236:ASN:H	1:B:236:ASN:HD22	1.63	0.46
1:B:225:PRO:HA	1:B:268:ASP:CG	2.38	0.44
1:A:225:PRO:HA	1:A:268:ASP:CG	2.38	0.44
1:A:251:THR:O	1:A:255:LEU:HG	2.20	0.42
1:A:197:VAL:HG22	1:A:246:THR:HG23	2.01	0.41
1:A:339:ARG:HB3	1:A:340:PRO:HD3	2.02	0.41
1:A:303:GLY:HA3	1:A:350:GLN:O	2.21	0.41

There are no symmetry-related clashes.

## 5.3 Torsion angles

### 5.3.1 Protein backbone

In the following table, the Percentiles column shows the percent Ramachandran outliers of the chain as a percentile score with respect to all X-ray entries followed by that with respect to entries of similar resolution.

The Analysed column shows the number of residues for which the backbone conformation was analysed, and the total number of residues.

Mol	Chain	Analysed	Favoured	Allowed	Outliers	Percentiles	
1	A	366/362 (101%)	355 (97%)	11 (3%)	0	100	100
1	B	361/362 (100%)	350 (97%)	11 (3%)	0	100	100
All	All	727/724 (100%)	705 (97%)	22 (3%)	0	100	100

There are no Ramachandran outliers to report.

### 5.3.2 Protein sidechains

In the following table, the Percentiles column shows the percent sidechain outliers of the chain as a percentile score with respect to all X-ray entries followed by that with respect to entries of similar resolution.

The Analysed column shows the number of residues for which the sidechain conformation was analysed, and the total number of residues.

Mol	Chain	Analysed	Rotameric	Outliers	Percentiles	
1	A	295/289 (102%)	293 (99%)	2 (1%)	84	75
1	B	290/289 (100%)	287 (99%)	3 (1%)	76	63
All	All	585/578 (101%)	580 (99%)	5 (1%)	78	67

All (5) residues with a non-rotameric sidechain are listed below:

Mol	Chain	Res	Type
1	A	118	THR
1	A	435	PHE
1	B	248	ARG
1	B	366	LYS
1	B	435	PHE

Some sidechains can be flipped to improve hydrogen bonding and reduce clashes. All (2) such sidechains are listed below:

Mol	Chain	Res	Type
1	A	136	GLN
1	B	236	ASN

### 5.3.3 RNA ⓘ

There are no RNA molecules in this entry.

## 5.4 Non-standard residues in protein, DNA, RNA chains ⓘ

There are no non-standard protein/DNA/RNA residues in this entry.

## 5.5 Carbohydrates ⓘ

14 monosaccharides are modelled in this entry.

In the following table, the Counts columns list the number of bonds (or angles) for which Mogul statistics could be retrieved, the number of bonds (or angles) that are observed in the model and the number of bonds (or angles) that are defined in the Chemical Component Dictionary. The Link column lists molecule types, if any, to which the group is linked. The Z score for a bond length (or angle) is the number of standard deviations the observed value is removed from the expected value. A bond length (or angle) with  $|Z| > 2$  is considered an outlier worth inspection. RMSZ is the root-mean-square of all Z scores of the bond lengths (or angles).

Mol	Type	Chain	Res	Link	Bond lengths			Bond angles		
					Counts	RMSZ	# $ Z  > 2$	Counts	RMSZ	# $ Z  > 2$
2	GTM	C	1	2	12,13,13	0.91	1 (8%)	14,18,18	1.51	3 (21%)
2	BGC	C	2	2	11,11,12	0.85	0	15,15,17	0.95	1 (6%)
2	BGC	C	3	2	11,11,12	0.75	0	15,15,17	1.20	2 (13%)
2	GDA	C	4	2	11,11,12	0.91	0	13,15,17	1.04	1 (7%)
3	GTM	D	1	3	12,13,13	0.82	0	14,18,18	1.38	1 (7%)
3	BGC	D	2	3	11,11,12	0.69	0	15,15,17	0.95	1 (6%)
3	BGC	D	3	3	11,11,12	0.45	0	15,15,17	1.98	1 (6%)
2	GTM	E	1	2	12,13,13	1.08	2 (16%)	14,18,18	1.17	1 (7%)
2	BGC	E	2	2	11,11,12	0.67	0	15,15,17	0.98	0
2	BGC	E	3	2	11,11,12	0.88	0	15,15,17	1.09	1 (6%)
2	GDA	E	4	2	11,11,12	1.13	1 (9%)	13,15,17	0.99	1 (7%)
3	GTM	F	1	3	12,13,13	0.92	1 (8%)	14,18,18	1.25	1 (7%)
3	BGC	F	2	3	11,11,12	0.78	0	15,15,17	1.46	3 (20%)
3	BGC	F	3	3	11,11,12	0.55	0	15,15,17	1.55	4 (26%)

In the following table, the Chirals column lists the number of chiral outliers, the number of chiral centers analysed, the number of these observed in the model and the number defined in the Chemical Component Dictionary. Similar counts are reported in the Torsion and Rings columns. '-' means no outliers of that kind were identified.

Mol	Type	Chain	Res	Link	Chirals	Torsions	Rings
2	GTM	C	1	2	-	1/4/24/24	0/1/1/1
2	BGC	C	2	2	-	2/2/19/22	0/1/1/1
2	BGC	C	3	2	-	0/2/19/22	0/1/1/1
2	GDA	C	4	2	-	0/2/19/22	0/1/1/1
3	GTM	D	1	3	-	0/4/24/24	0/1/1/1
3	BGC	D	2	3	-	0/2/19/22	0/1/1/1
3	BGC	D	3	3	-	0/2/19/22	0/1/1/1
2	GTM	E	1	2	-	1/4/24/24	0/1/1/1
2	BGC	E	2	2	-	1/2/19/22	0/1/1/1
2	BGC	E	3	2	-	0/2/19/22	0/1/1/1
2	GDA	E	4	2	-	0/2/19/22	0/1/1/1
3	GTM	F	1	3	-	0/4/24/24	0/1/1/1
3	BGC	F	2	3	-	0/2/19/22	0/1/1/1
3	BGC	F	3	3	-	0/2/19/22	0/1/1/1

All (5) bond length outliers are listed below:

Mol	Chain	Res	Type	Atoms	Z	Observed(Å)	Ideal(Å)
2	E	4	GDA	C2-C3	2.73	1.56	1.52
3	F	1	GTM	C3-C4	2.57	1.55	1.53
2	E	1	GTM	O1-C1	2.38	1.44	1.40
2	E	1	GTM	C3-C4	-2.30	1.51	1.53
2	C	1	GTM	O1-C1	2.26	1.44	1.40

All (21) bond angle outliers are listed below:

Mol	Chain	Res	Type	Atoms	Z	Observed(°)	Ideal(°)
3	D	3	BGC	C1-O5-C5	-6.06	103.98	112.19
3	F	3	BGC	C1-O5-C5	-4.19	106.52	112.19
3	F	1	GTM	O1-C1-C2	4.07	112.92	108.15
3	D	1	GTM	O1-C1-C2	4.01	112.84	108.15
2	C	4	GDA	C1-O5-C5	3.09	116.38	112.19
3	F	2	BGC	O3-C3-C2	2.97	115.68	109.99
2	C	1	GTM	O1-C1-C2	2.69	111.30	108.15
2	E	3	BGC	O3-C3-C2	-2.69	104.85	109.99
3	F	2	BGC	O4-C4-C3	-2.68	104.16	110.35
3	F	2	BGC	C1-C2-C3	2.67	112.95	109.67
2	E	1	GTM	O1-C1-C2	2.63	111.23	108.15

*Continued on next page...*

*Continued from previous page...*

Mol	Chain	Res	Type	Atoms	Z	Observed(°)	Ideal(°)
2	C	1	GTM	C1-O5-C5	2.62	118.83	113.69
3	F	3	BGC	O4-C4-C5	2.46	115.41	109.30
2	C	3	BGC	O3-C3-C2	-2.44	105.31	109.99
2	E	4	GDA	C2-C3-C4	2.36	113.28	110.85
2	C	2	BGC	O6-C6-C5	-2.31	103.35	111.29
3	F	3	BGC	O5-C1-C2	-2.27	107.27	110.77
2	C	1	GTM	C7-O1-C1	2.22	116.70	113.27
3	F	3	BGC	O2-C2-C1	2.17	113.60	109.15
2	C	3	BGC	O4-C4-C5	-2.17	103.90	109.30
3	D	2	BGC	O4-C4-C3	-2.13	105.42	110.35

There are no chirality outliers.

All (5) torsion outliers are listed below:

Mol	Chain	Res	Type	Atoms
2	C	1	GTM	O5-C1-O1-C7
2	C	2	BGC	C4-C5-C6-O6
2	E	1	GTM	O5-C5-C6-O6
2	C	2	BGC	O5-C5-C6-O6
2	E	2	BGC	C4-C5-C6-O6

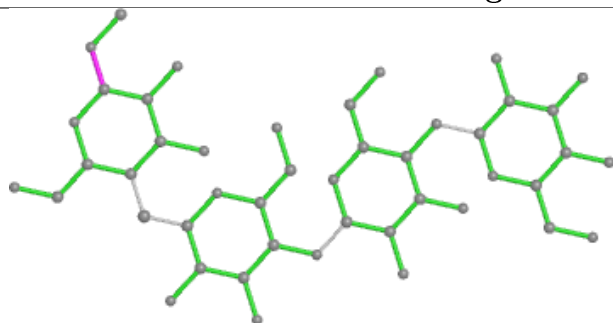
There are no ring outliers.

1 monomer is involved in 1 short contact:

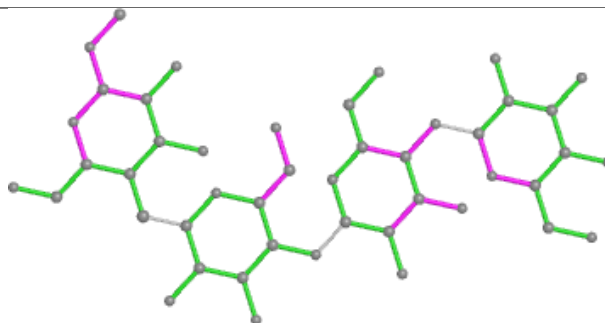
Mol	Chain	Res	Type	Clashes	Symm-Clashes
2	E	1	GTM	1	0

The following is a two-dimensional graphical depiction of Mogul quality analysis of bond lengths, bond angles, torsion angles, and ring geometry for oligosaccharide.

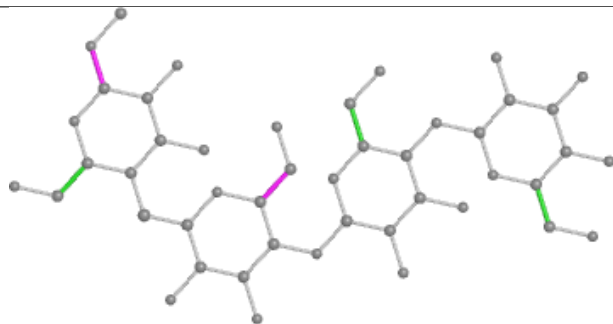
## Oligosaccharide Chain C



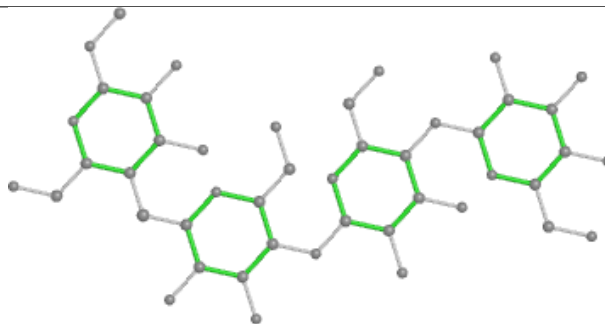
Bond lengths



Bond angles

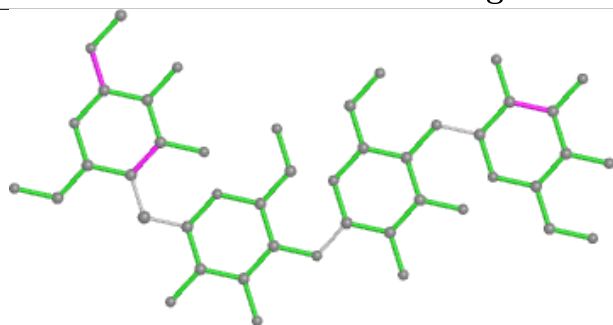


Torsions

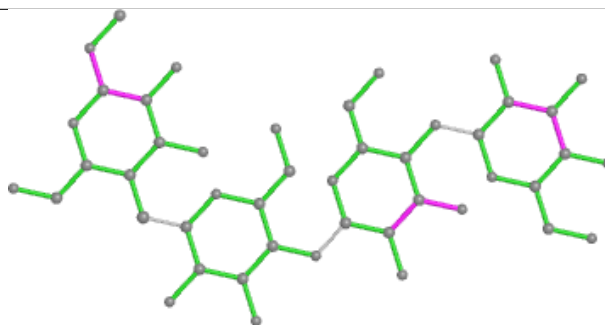


Rings

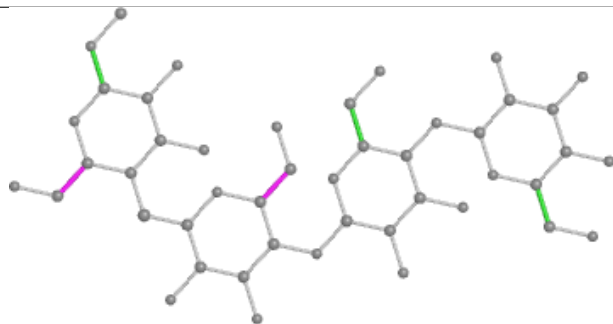
## Oligosaccharide Chain E



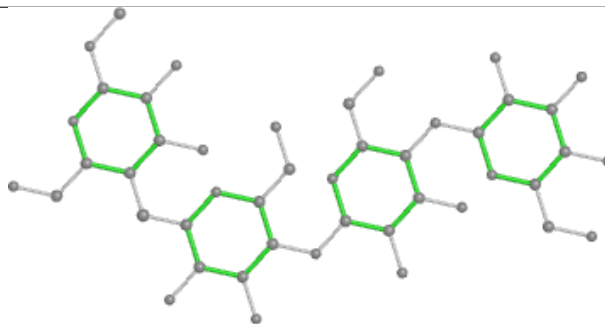
Bond lengths



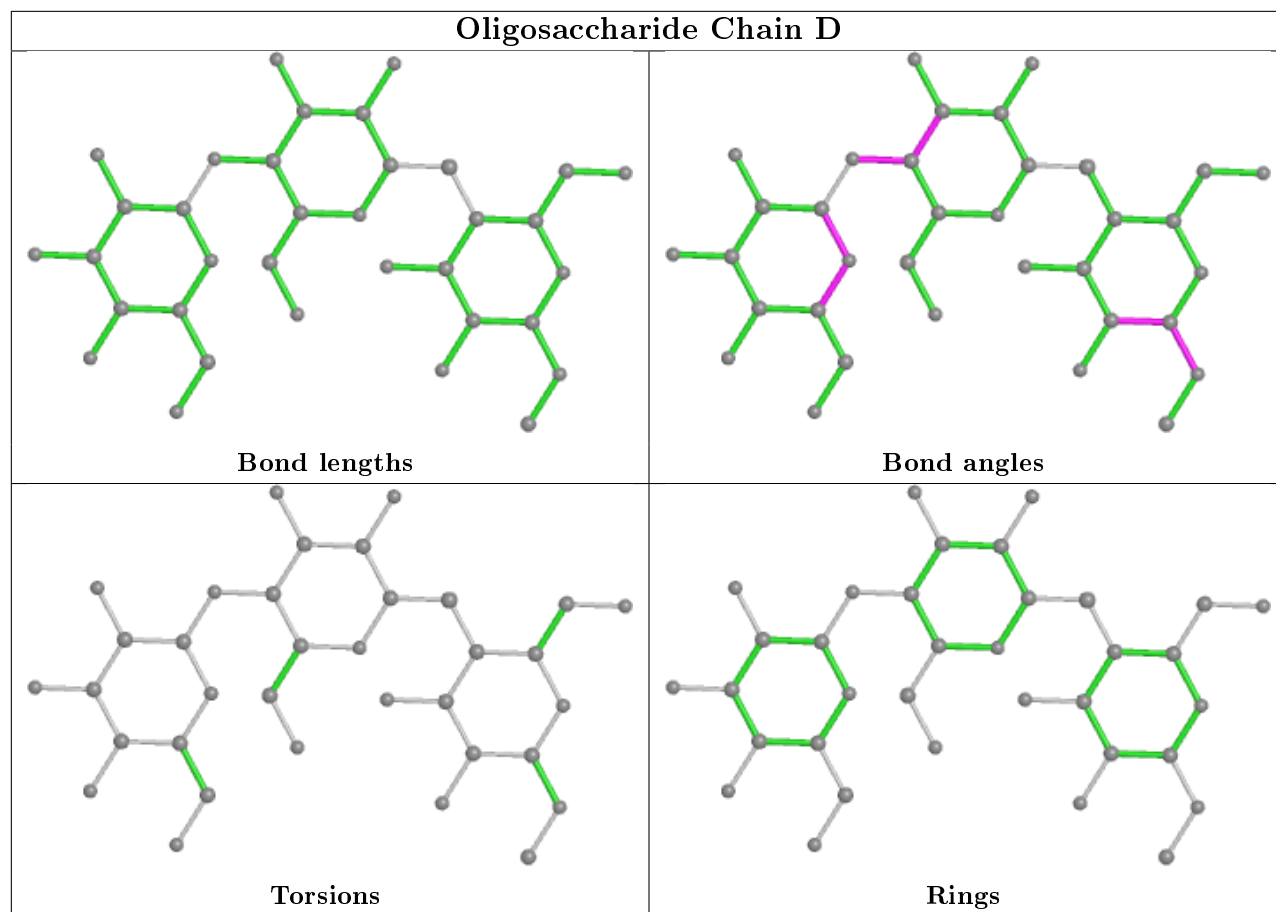
Bond angles



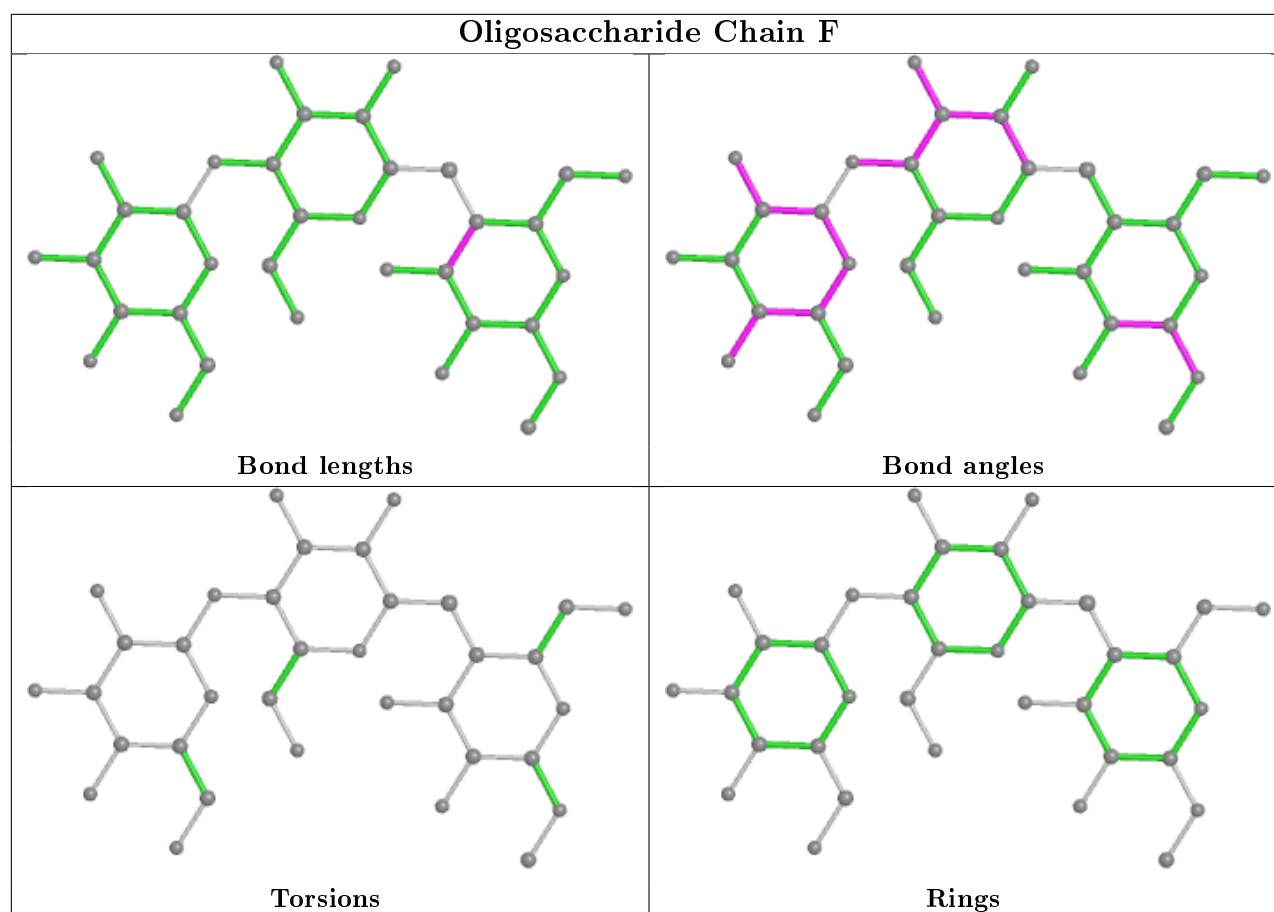
Torsions



Rings







## 5.6 Ligand geometry [i](#)

5 ligands are modelled in this entry.

In the following table, the Counts columns list the number of bonds (or angles) for which Mogul statistics could be retrieved, the number of bonds (or angles) that are observed in the model and the number of bonds (or angles) that are defined in the Chemical Component Dictionary. The Link column lists molecule types, if any, to which the group is linked. The Z score for a bond length (or angle) is the number of standard deviations the observed value is removed from the expected value. A bond length (or angle) with  $|Z| > 2$  is considered an outlier worth inspection. RMSZ is the root-mean-square of all Z scores of the bond lengths (or angles).

Mol	Type	Chain	Res	Link	Bond lengths			Bond angles		
					Counts	RMSZ	$\# Z  > 2$	Counts	RMSZ	$\# Z  > 2$
5	GOL	B	459	-	5,5,5	0.86	0	5,5,5	1.80	2 (40%)
4	NAG	A	451	1	14,14,15	0.97	1 (7%)	17,19,21	0.81	0
6	FLG	B	460	1	26,31,34	2.85	6 (23%)	30,45,49	1.60	5 (16%)
4	NAG	B	451	1	14,14,15	0.85	0	17,19,21	1.00	0
5	GOL	A	459	-	5,5,5	0.43	0	5,5,5	0.93	0

In the following table, the Chirals column lists the number of chiral outliers, the number of chiral

centers analysed, the number of these observed in the model and the number defined in the Chemical Component Dictionary. Similar counts are reported in the Torsion and Rings columns. '-' means no outliers of that kind were identified.

Mol	Type	Chain	Res	Link	Chirals	Torsions	Rings
5	GOL	B	459	-	-	1/4/4/4	-
4	NAG	A	451	1	-	0/6/23/26	0/1/1/1
6	FLG	B	460	1	-	0/6/15/19	0/4/4/4
4	NAG	B	451	1	-	0/6/23/26	0/1/1/1
5	GOL	A	459	-	-	3/4/4/4	-

All (7) bond length outliers are listed below:

Mol	Chain	Res	Type	Atoms	Z	Observed(Å)	Ideal(Å)
6	B	460	FLG	C21-S1	12.03	1.81	1.64
6	B	460	FLG	O2-C3	-5.43	1.27	1.36
6	B	460	FLG	O3-C6	2.43	1.27	1.23
4	A	451	NAG	C1-C2	2.36	1.55	1.52
6	B	460	FLG	C17-N1	-2.29	1.37	1.41
6	B	460	FLG	C19-C20	2.24	1.49	1.47
6	B	460	FLG	C2-C1	2.11	1.41	1.37

All (7) bond angle outliers are listed below:

Mol	Chain	Res	Type	Atoms	Z	Observed(°)	Ideal(°)
6	B	460	FLG	O2-C3-C2	4.42	121.28	116.11
6	B	460	FLG	C2-C3-C11	-3.79	118.85	123.05
6	B	460	FLG	O2-C4-C5	3.26	119.90	116.03
6	B	460	FLG	C9-C10-C11	-2.85	117.20	119.63
5	B	459	GOL	O2-C2-C1	2.41	119.72	109.12
6	B	460	FLG	C12-C11-C3	2.32	119.19	116.50
5	B	459	GOL	O3-C3-C2	2.28	121.14	110.20

There are no chirality outliers.

All (4) torsion outliers are listed below:

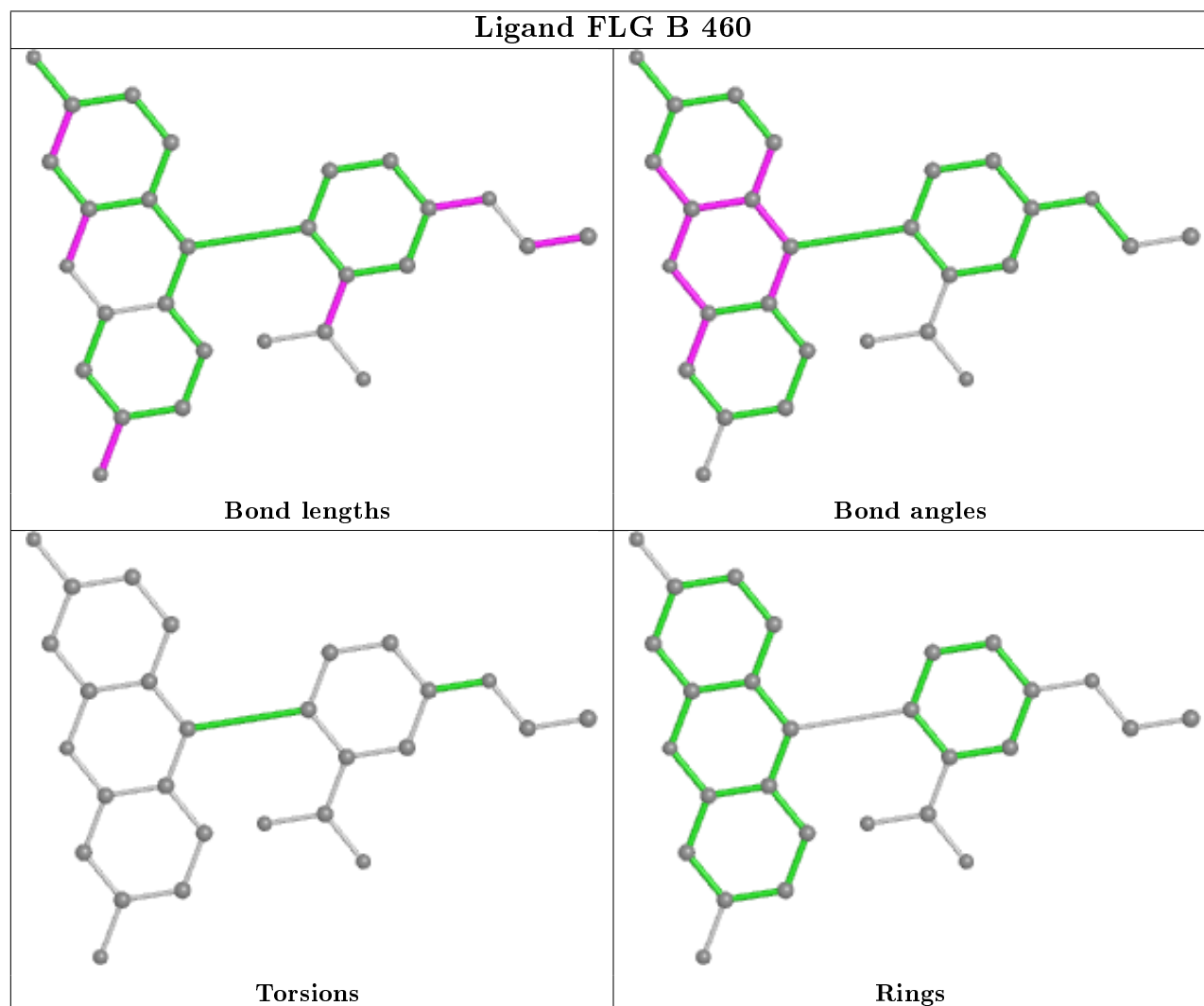
Mol	Chain	Res	Type	Atoms
5	A	459	GOL	O1-C1-C2-C3
5	A	459	GOL	C1-C2-C3-O3
5	A	459	GOL	O1-C1-C2-O2
5	B	459	GOL	O1-C1-C2-O2

There are no ring outliers.

1 monomer is involved in 1 short contact:

Mol	Chain	Res	Type	Clashes	Symm-Clashes
6	B	460	FLG	1	0

The following is a two-dimensional graphical depiction of Mogul quality analysis of bond lengths, bond angles, torsion angles, and ring geometry for all instances of the Ligand of Interest. In addition, ligands with molecular weight > 250 and outliers as shown on the validation Tables will also be included. For torsion angles, if less than 5% of the Mogul distribution of torsion angles is within 10 degrees of the torsion angle in question, then that torsion angle is considered an outlier. Any bond that is central to one or more torsion angles identified as an outlier by Mogul will be highlighted in the graph. For rings, the root-mean-square deviation (RMSD) between the ring in question and similar rings identified by Mogul is calculated over all ring torsion angles. If the average RMSD is greater than 60 degrees and the minimal RMSD between the ring in question and any Mogul-identified rings is also greater than 60 degrees, then that ring is considered an outlier. The outliers are highlighted in purple. The color gray indicates Mogul did not find sufficient equivalents in the CSD to analyse the geometry.



## 5.7 Other polymers

There are no such residues in this entry.

## 5.8 Polymer linkage issues

There are no chain breaks in this entry.

## 6 Fit of model and data [i](#)

### 6.1 Protein, DNA and RNA chains [i](#)

In the following table, the column labelled ‘#RSRZ> 2’ contains the number (and percentage) of RSRZ outliers, followed by percent RSRZ outliers for the chain as percentile scores relative to all X-ray entries and entries of similar resolution. The OWAB column contains the minimum, median, 95<sup>th</sup> percentile and maximum values of the occupancy-weighted average B-factor per residue. The column labelled ‘Q< 0.9’ lists the number of (and percentage) of residues with an average occupancy less than 0.9.

Mol	Chain	Analysed	<RSRZ>	#RSRZ>2	OWAB(Å <sup>2</sup> )	Q<0.9
1	A	361/362 (99%)	-0.38	3 (0%) 86 90	6, 8, 13, 25	1 (0%)
1	B	361/362 (99%)	-0.24	5 (1%) 75 82	5, 9, 14, 24	3 (0%)
All	All	722/724 (99%)	-0.31	8 (1%) 80 86	5, 8, 14, 25	4 (0%)

All (8) RSRZ outliers are listed below:

Mol	Chain	Res	Type	RSRZ
1	B	90	ASN	3.9
1	B	194	ASN	3.1
1	B	118	THR	3.0
1	A	90	ASN	2.9
1	B	390[A]	GLN	2.6
1	B	391	TYR	2.3
1	A	150[A]	GLN	2.0
1	A	236	ASN	2.0

### 6.2 Non-standard residues in protein, DNA, RNA chains [i](#)

There are no non-standard protein/DNA/RNA residues in this entry.

### 6.3 Carbohydrates [i](#)

In the following table, the Atoms column lists the number of modelled atoms in the group and the number defined in the chemical component dictionary. The B-factors column lists the minimum, median, 95<sup>th</sup> percentile and maximum values of B factors of atoms in the group. The column labelled ‘Q< 0.9’ lists the number of atoms with occupancy less than 0.9.

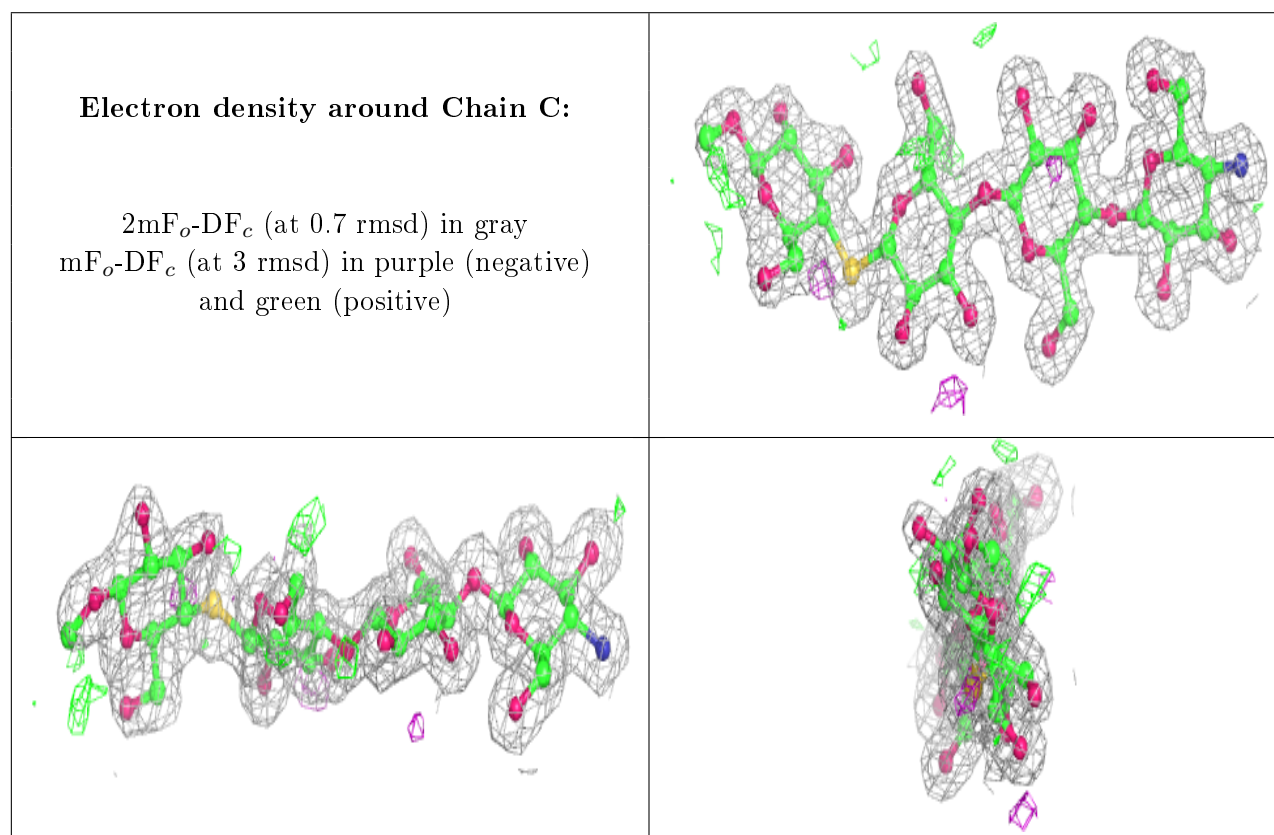
Mol	Type	Chain	Res	Atoms	RSCC	RSR	B-factors(Å <sup>2</sup> )	Q<0.9
3	BGC	D	3	11/12	0.86	0.17	24,29,32,35	0

*Continued on next page...*

*Continued from previous page...*

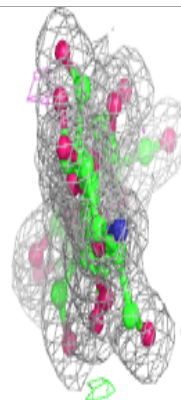
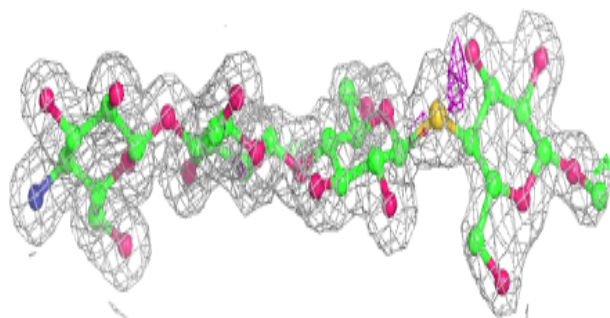
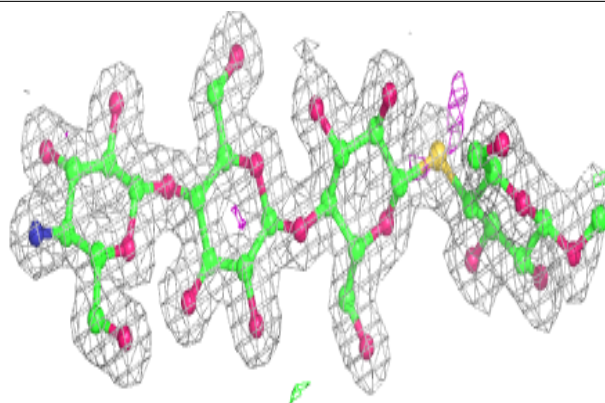
Mol	Type	Chain	Res	Atoms	RSCC	RSR	B-factors( $\text{\AA}^2$ )	Q<0.9
3	BGC	F	3	11/12	0.87	0.19	26,30,33,35	0
2	BGC	C	2	11/12	0.93	0.07	16,18,22,26	0
3	BGC	F	2	11/12	0.94	0.08	14,17,20,22	0
2	GTM	E	1	13/13	0.94	0.14	23,30,34,35	0
2	GTM	C	1	13/13	0.94	0.12	24,33,37,37	0
2	BGC	E	2	11/12	0.95	0.08	16,19,22,23	0
2	BGC	E	3	11/12	0.96	0.07	13,14,15,18	0
2	GDA	E	4	11/12	0.97	0.09	12,14,16,16	0
3	BGC	D	2	11/12	0.97	0.06	13,15,19,20	0
2	BGC	C	3	11/12	0.97	0.07	12,14,15,17	0
2	GDA	C	4	11/12	0.98	0.09	10,12,14,16	0
3	GTM	D	1	13/13	0.99	0.08	9,11,14,16	0
3	GTM	F	1	13/13	0.99	0.06	10,12,15,16	0

The following is a graphical depiction of the model fit to experimental electron density for oligosaccharide. Each fit is shown from different orientation to approximate a three-dimensional view.

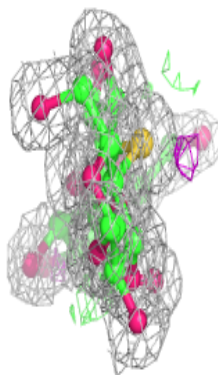
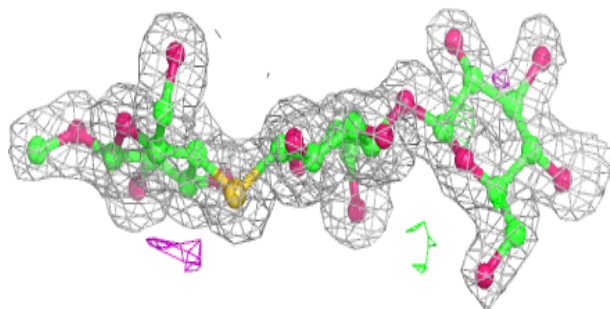
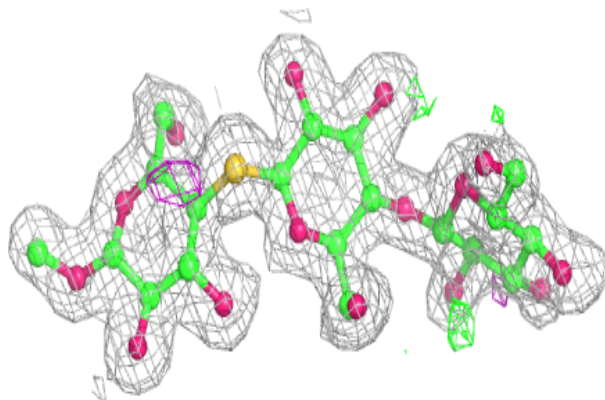


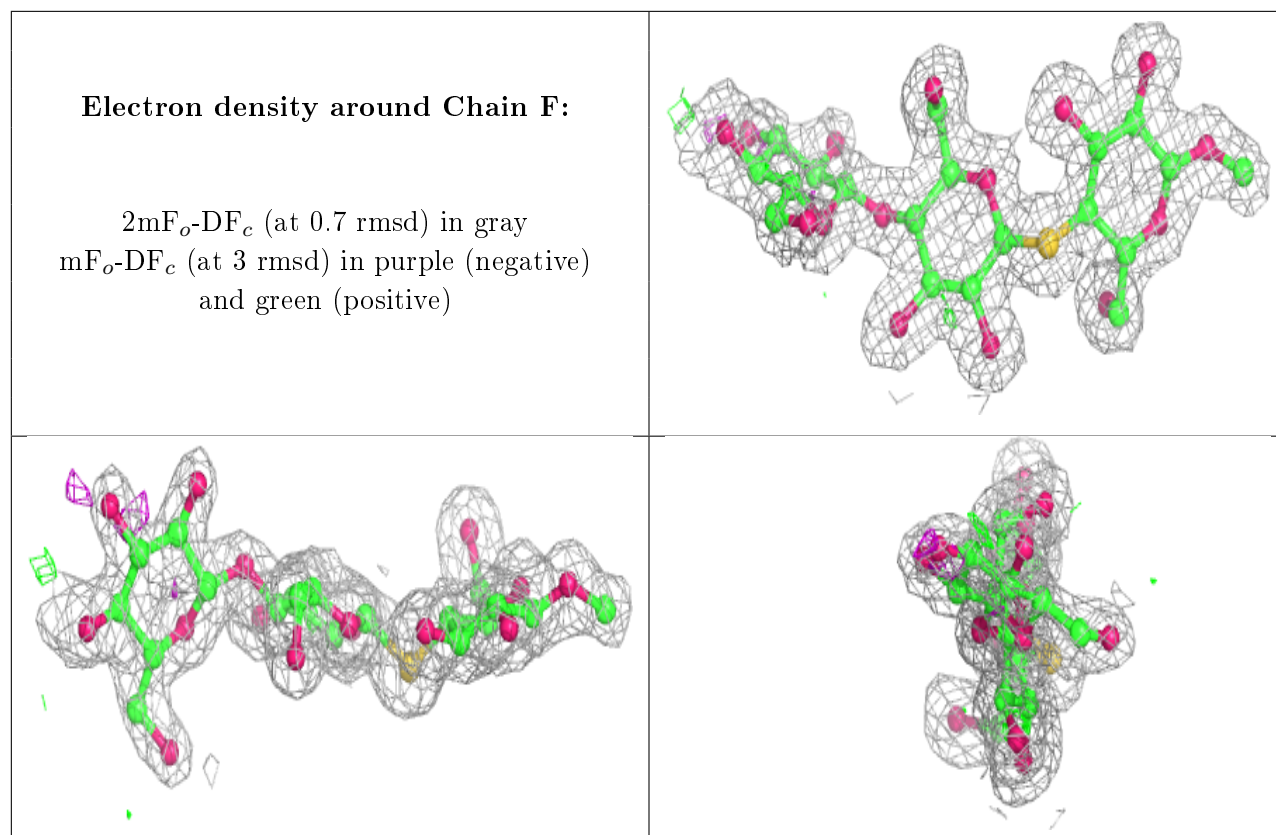
**Electron density around Chain E:**

$2mF_o-DF_c$  (at 0.7 rmsd) in gray  
 $mF_o-DF_c$  (at 3 rmsd) in purple (negative)  
and green (positive)

**Electron density around Chain D:**

$2mF_o-DF_c$  (at 0.7 rmsd) in gray  
 $mF_o-DF_c$  (at 3 rmsd) in purple (negative)  
and green (positive)





## 6.4 Ligands [i](#)

In the following table, the Atoms column lists the number of modelled atoms in the group and the number defined in the chemical component dictionary. The B-factors column lists the minimum, median, 95<sup>th</sup> percentile and maximum values of B factors of atoms in the group. The column labelled 'Q< 0.9' lists the number of atoms with occupancy less than 0.9.

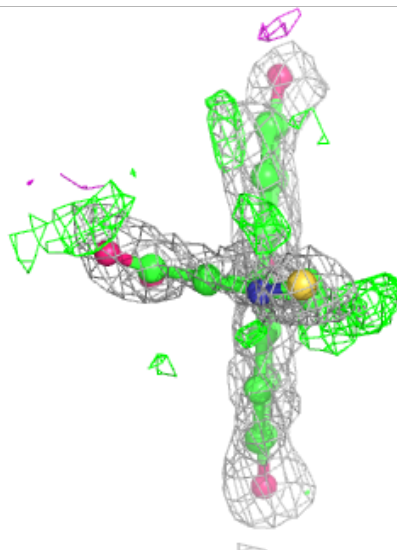
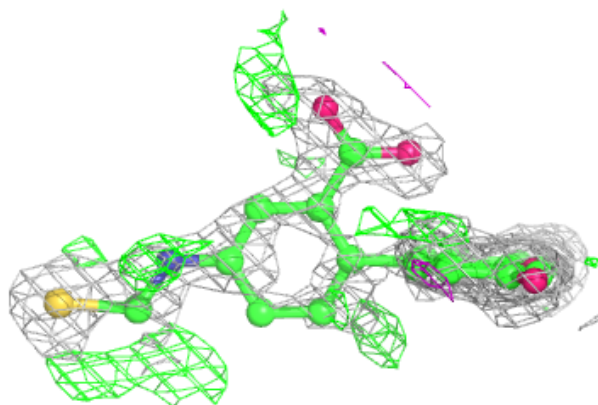
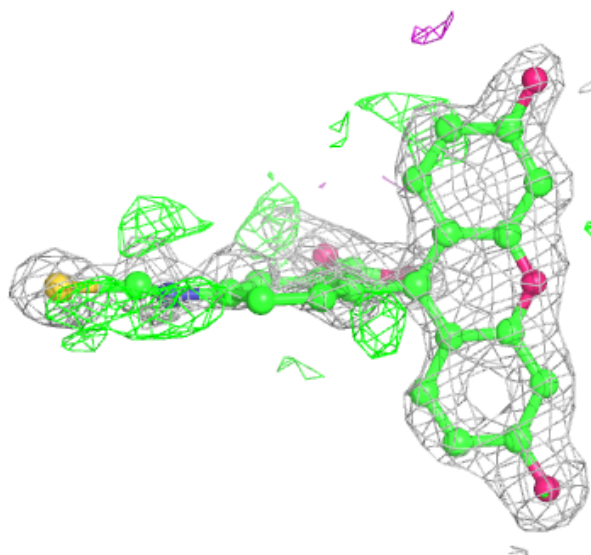
Mol	Type	Chain	Res	Atoms	RSCC	RSR	B-factors(Å <sup>2</sup> )	Q<0.9
6	FLG	B	460	28/31	0.80	0.19	12,18,23,27	28
5	GOL	B	459	6/6	0.92	0.14	23,25,30,34	0
5	GOL	A	459	6/6	0.94	0.11	17,26,30,30	0
4	NAG	B	451	14/15	0.95	0.15	18,21,24,24	0
4	NAG	A	451	14/15	0.96	0.09	14,17,19,20	0

The following is a graphical depiction of the model fit to experimental electron density of all instances of the Ligand of Interest. In addition, ligands with molecular weight > 250 and outliers as shown on the geometry validation Tables will also be included. Each fit is shown from different orientation to approximate a three-dimensional view.



**Electron density around FLG B 460:**

$2mF_o-DF_c$  (at 0.7 rmsd) in gray  
 $mF_o-DF_c$  (at 3 rmsd) in purple (negative)  
and green (positive)



## 6.5 Other polymers [i](#)

There are no such residues in this entry.