



Full wwPDB X-ray Structure Validation Report ⓘ

May 24, 2021 – 06:03 PM EDT

PDB ID : 1OCE
Title : ACETYLCHOLINESTERASE (E.C. 3.1.1.7) COMPLEXED WITH MF268
Authors : Bartolucci, C.; Perola, E.; Cellai, L.; Brufani, M.; Lamba, D.
Deposited on : 1998-06-12
Resolution : 2.70 Å(reported)

This is a Full wwPDB X-ray Structure Validation Report for a publicly released PDB entry.

We welcome your comments at validation@mail.wwpdb.org

A user guide is available at

<https://www.wwpdb.org/validation/2017/XrayValidationReportHelp>

with specific help available everywhere you see the ⓘ symbol.

The following versions of software and data (see [references ⓘ](#)) were used in the production of this report:

MolProbity : 4.02b-467
Mogul : 1.8.5 (274361), CSD as541be (2020)
Xtriage (Phenix) : 1.13
EDS : 2.18
buster-report : 1.1.7 (2018)
Percentile statistics : 20191225.v01 (using entries in the PDB archive December 25th 2019)
Refmac : 5.8.0158
CCP4 : 7.0.044 (Gargrove)
Ideal geometry (proteins) : Engh & Huber (2001)
Ideal geometry (DNA, RNA) : Parkinson et al. (1996)
Validation Pipeline (wwPDB-VP) : 2.18

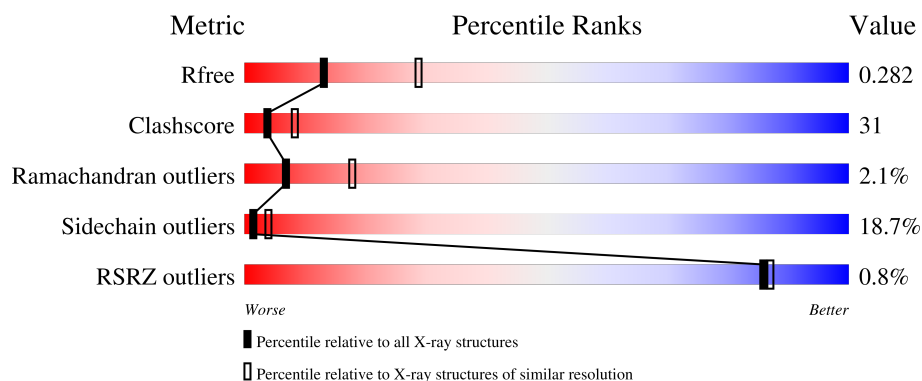
1 Overall quality at a glance

The following experimental techniques were used to determine the structure:

X-RAY DIFFRACTION


The reported resolution of this entry is 2.70 Å.

Percentile scores (ranging between 0-100) for global validation metrics of the entry are shown in the following graphic. The table shows the number of entries on which the scores are based.



Metric	Whole archive (#Entries)	Similar resolution (#Entries, resolution range(Å))
R_{free}	130704	2808 (2.70-2.70)
Clashscore	141614	3122 (2.70-2.70)
Ramachandran outliers	138981	3069 (2.70-2.70)
Sidechain outliers	138945	3069 (2.70-2.70)
RSRZ outliers	127900	2737 (2.70-2.70)

The table below summarises the geometric issues observed across the polymeric chains and their fit to the electron density. The red, orange, yellow and green segments of the lower bar indicate the fraction of residues that contain outliers for ≥ 3 , 2, 1 and 0 types of geometric quality criteria respectively. A grey segment represents the fraction of residues that are not modelled. The numeric value for each fraction is indicated below the corresponding segment, with a dot representing fractions $\leq 5\%$. The upper red bar (where present) indicates the fraction of residues that have poor fit to the electron density. The numeric value is given above the bar.

Mol	Chain	Length	Quality of chain
1	A	537	

2 Entry composition [i](#)

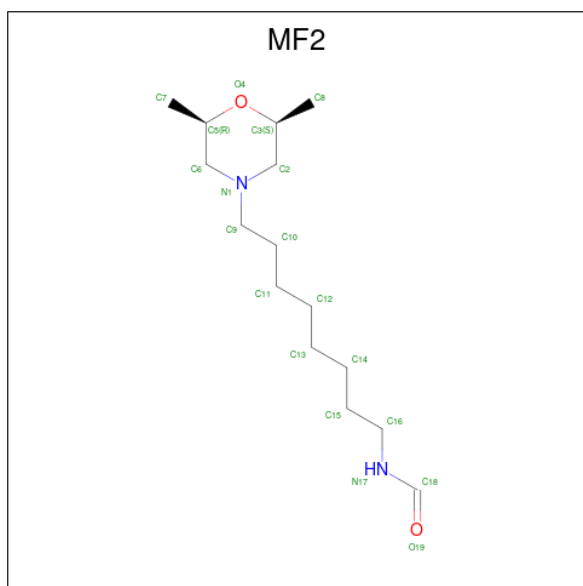
There are 3 unique types of molecules in this entry. The entry contains 4379 atoms, of which 0 are hydrogens and 0 are deuteriums.

In the tables below, the ZeroOcc column contains the number of atoms modelled with zero occupancy, the AltConf column contains the number of residues with at least one atom in alternate conformation and the Trace column contains the number of residues modelled with at most 2 atoms.

- Molecule 1 is a protein called ACETYLCHOLINESTERASE.

Mol	Chain	Residues	Atoms					ZeroOcc	AltConf	Trace
			Total	C	N	O	S			
1	A	527	4203	2697	712	772	22	60	0	0

- Molecule 2 is CIS-2,6-DIMETHYLMORPHOLINOCTYLCARBAMYLESEROLINE (three-letter code: MF2) (formula: C₁₅H₃₀N₂O₂).



Mol	Chain	Residues	Atoms				ZeroOcc	AltConf
			Total	C	N	O		
2	A	1	19	15	2	2	0	0

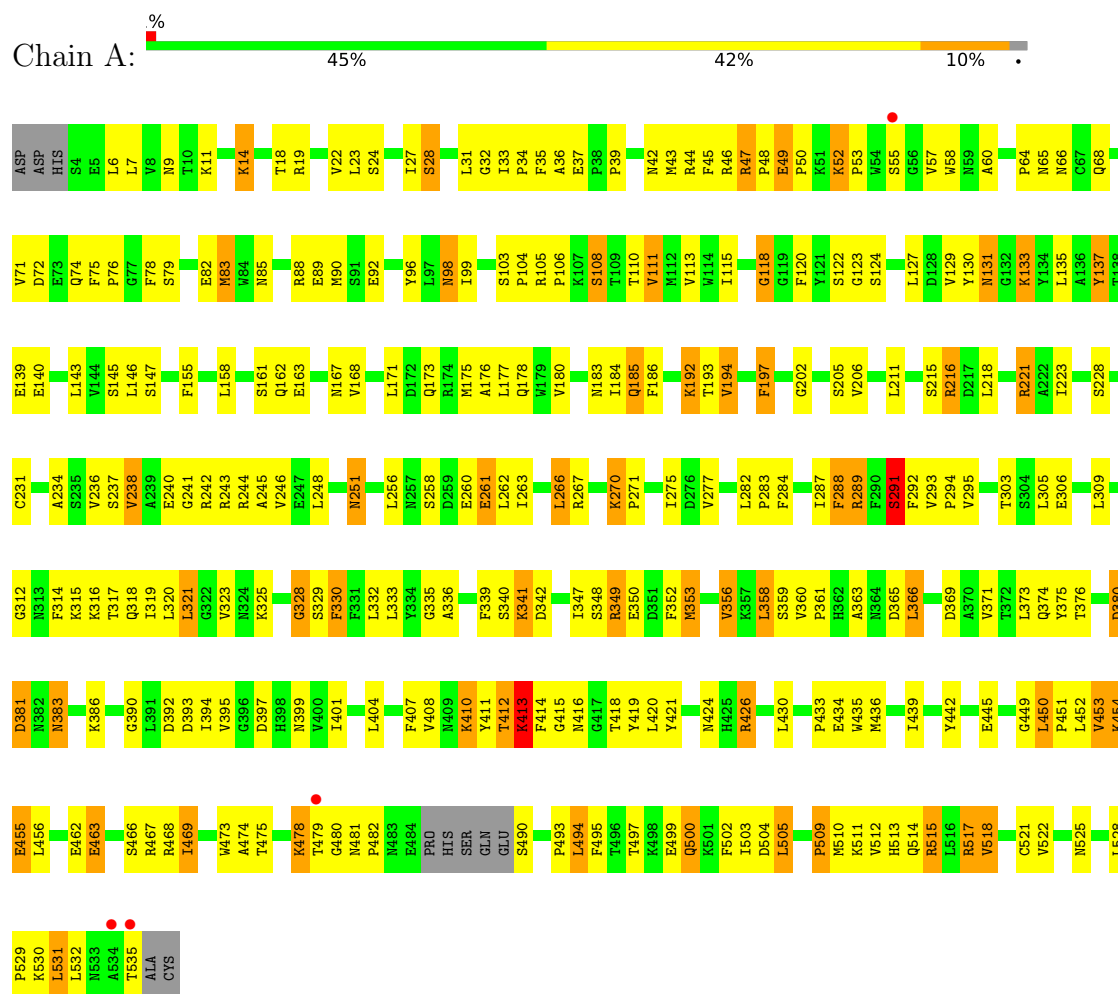
- Molecule 3 is water.

Mol	Chain	Residues	Atoms		ZeroOcc	AltConf
3	A	157	Total	O	0	0
			157	157		

3 Residue-property plots

These plots are drawn for all protein, RNA, DNA and oligosaccharide chains in the entry. The first graphic for a chain summarises the proportions of the various outlier classes displayed in the second graphic. The second graphic shows the sequence view annotated by issues in geometry and electron density. Residues are color-coded according to the number of geometric quality criteria for which they contain at least one outlier: green = 0, yellow = 1, orange = 2 and red = 3 or more. A red dot above a residue indicates a poor fit to the electron density ($RSRZ > 2$). Stretches of 2 or more consecutive residues without any outlier are shown as a green connector. Residues present in the sample, but not in the model, are shown in grey.

• Molecule 1: ACETYLCHOLINESTERASE



4 Data and refinement statistics

Property	Value	Source
Space group	P 31 2 1	Depositor
Cell constants a, b, c, α , β , γ	111.50Å 111.50Å 137.39Å 90.00° 90.00° 120.00°	Depositor
Resolution (Å)	8.00 – 2.70 19.94 – 2.70	Depositor EDS
% Data completeness (in resolution range)	84.7 (8.00-2.70) 84.7 (19.94-2.70)	Depositor EDS
R_{merge}	(Not available)	Depositor
R_{sym}	0.14	Depositor
$\langle I/\sigma(I) \rangle$ ¹	1.67 (at 2.71Å)	Xtriage
Refinement program	X-PLOR	Depositor
R, R_{free}	0.208 , 0.291 0.215 , 0.282	Depositor DCC
R_{free} test set	1166 reflections (4.85%)	wwPDB-VP
Wilson B-factor (Å ²)	45.3	Xtriage
Anisotropy	0.237	Xtriage
Bulk solvent k_{sol} (e/Å ³), B_{sol} (Å ²)	0.33 , 98.2	EDS
L-test for twinning ²	$\langle L \rangle = 0.49$, $\langle L^2 \rangle = 0.32$	Xtriage
Estimated twinning fraction	0.030 for -h,-k,l	Xtriage
F_o, F_c correlation	0.92	EDS
Total number of atoms	4379	wwPDB-VP
Average B, all atoms (Å ²)	29.0	wwPDB-VP

Xtriage's analysis on translational NCS is as follows: *The largest off-origin peak in the Patterson function is 3.82% of the height of the origin peak. No significant pseudotranslation is detected.*

¹Intensities estimated from amplitudes.

²Theoretical values of $\langle |L| \rangle$, $\langle L^2 \rangle$ for acentric reflections are 0.5, 0.333 respectively for untwinned datasets, and 0.375, 0.2 for perfectly twinned datasets.

5 Model quality [i](#)

5.1 Standard geometry [i](#)

Bond lengths and bond angles in the following residue types are not validated in this section: MF2

The Z score for a bond length (or angle) is the number of standard deviations the observed value is removed from the expected value. A bond length (or angle) with $|Z| > 5$ is considered an outlier worth inspection. RMSZ is the root-mean-square of all Z scores of the bond lengths (or angles).

Mol	Chain	Bond lengths		Bond angles	
		RMSZ	$\# Z > 5$	RMSZ	$\# Z > 5$
1	A	0.40	0/4323	0.64	0/5867

There are no bond length outliers.

There are no bond angle outliers.

There are no chirality outliers.

There are no planarity outliers.

5.2 Too-close contacts [i](#)

In the following table, the Non-H and H(model) columns list the number of non-hydrogen atoms and hydrogen atoms in the chain respectively. The H(added) column lists the number of hydrogen atoms added and optimized by MolProbity. The Clashes column lists the number of clashes within the asymmetric unit, whereas Symm-Clashes lists symmetry-related clashes.

Mol	Chain	Non-H	H(model)	H(added)	Clashes	Symm-Clashes
1	A	4203	0	4063	254	0
2	A	19	0	29	1	0
3	A	157	0	0	9	0
All	All	4379	0	4092	254	0

The all-atom clashscore is defined as the number of clashes found per 1000 atoms (including hydrogen atoms). The all-atom clashscore for this structure is 31.

All (254) close contacts within the same asymmetric unit are listed below, sorted by their clash magnitude.

Atom-1	Atom-2	Interatomic distance (Å)	Clash overlap (Å)
1:A:401:ILE:HG21	1:A:517:ARG:HG3	1.48	0.96

Continued on next page...

Continued from previous page...

Atom-1	Atom-2	Interatomic distance (Å)	Clash overlap (Å)
1:A:383:ASN:HB3	1:A:386:LYS:HB2	1.47	0.95
1:A:111:VAL:HG23	1:A:194:VAL:HA	1.52	0.92
1:A:82:GLU:HA	1:A:85:ASN:HD22	1.34	0.90
1:A:216:ARG:HB3	1:A:315:LYS:HB2	1.55	0.88
1:A:32:GLY:HA2	1:A:64:PRO:HG3	1.55	0.86
1:A:453:VAL:HG22	1:A:456:LEU:HG	1.58	0.85
1:A:167:ASN:HD21	1:A:295:VAL:H	1.18	0.85
1:A:349:ARG:NH2	1:A:376:THR:HG23	1.94	0.82
1:A:366:LEU:HD12	1:A:535:THR:HG21	1.61	0.81
1:A:360:VAL:HG12	1:A:363:ALA:HB2	1.62	0.81
1:A:349:ARG:HG2	1:A:349:ARG:HH11	1.47	0.80
1:A:163:GLU:HB3	1:A:267:ARG:HH22	1.47	0.78
1:A:349:ARG:HG2	1:A:349:ARG:NH1	1.99	0.78
1:A:500:GLN:HG3	1:A:515:ARG:HG3	1.66	0.77
1:A:528:LEU:HB3	1:A:529:PRO:HD3	1.66	0.77
1:A:44:ARG:HH11	1:A:267:ARG:HA	1.49	0.76
1:A:380:ASP:OD2	1:A:383:ASN:HB2	1.84	0.76
1:A:312:GLY:HA2	1:A:314:PHE:CE2	2.20	0.76
1:A:240:GLU:O	1:A:244:ARG:HG2	1.88	0.74
1:A:341:LYS:HD3	3:A:905:HOH:O	1.88	0.73
1:A:455:GLU:H	1:A:455:GLU:CD	1.92	0.73
1:A:78:PHE:O	1:A:82:GLU:HG2	1.90	0.72
1:A:48:PRO:HB2	1:A:175:MET:HE1	1.71	0.72
1:A:110:THR:OG1	1:A:478:LYS:HB2	1.89	0.71
1:A:449:GLY:HA2	1:A:466:SER:OG	1.90	0.71
1:A:236:VAL:HG23	1:A:237:SER:O	1.91	0.71
1:A:68:GLN:HG2	1:A:271:PRO:HB3	1.73	0.70
1:A:453:VAL:HG23	1:A:455:GLU:OE1	1.92	0.70
1:A:111:VAL:HG23	1:A:194:VAL:CA	2.22	0.69
1:A:163:GLU:HB3	1:A:267:ARG:NH2	2.08	0.68
1:A:341:LYS:HD2	1:A:342:ASP:OD1	1.93	0.67
1:A:360:VAL:CG1	1:A:363:ALA:HB2	2.23	0.67
1:A:518:VAL:O	1:A:522:VAL:HG23	1.94	0.67
1:A:515:ARG:HB3	1:A:518:VAL:HG22	1.76	0.67
1:A:514:GLN:O	1:A:515:ARG:HB2	1.94	0.67
1:A:287:ILE:HD11	1:A:335:GLY:HA3	1.76	0.66
1:A:316:LYS:HD3	1:A:414:PHE:HB3	1.78	0.66
1:A:404:LEU:O	1:A:408:VAL:HG23	1.95	0.66
1:A:48:PRO:HB2	1:A:175:MET:CE	2.25	0.66
1:A:180:VAL:O	1:A:184:ILE:HB	1.95	0.66
1:A:349:ARG:HH21	1:A:376:THR:HG23	1.61	0.66

Continued on next page...

Continued from previous page...

Atom-1	Atom-2	Interatomic distance (Å)	Clash overlap (Å)
1:A:66:ASN:ND2	1:A:124:SER:HB3	2.12	0.65
1:A:349:ARG:HH11	1:A:349:ARG:CG	2.09	0.65
1:A:521:CYS:O	1:A:525:ASN:HB2	1.96	0.65
1:A:22:VAL:HG22	1:A:133:LYS:HG3	1.77	0.65
1:A:531:LEU:HD23	1:A:532:LEU:N	2.11	0.65
1:A:11:LYS:HB2	1:A:183:ASN:OD1	1.97	0.64
1:A:197:PHE:HB3	1:A:223:ILE:HB	1.79	0.64
1:A:450:LEU:N	1:A:451:PRO:CD	2.60	0.64
1:A:426:ARG:NH2	1:A:434:GLU:HA	2.12	0.64
1:A:433:PRO:HB2	1:A:435:TRP:CD1	2.33	0.64
1:A:411:TYR:O	1:A:413:LYS:N	2.30	0.64
1:A:319:ILE:HD12	1:A:321:LEU:HG	1.80	0.63
1:A:115:ILE:HG21	1:A:173:GLN:NE2	2.14	0.63
1:A:236:VAL:HG13	1:A:293:VAL:HG23	1.80	0.62
1:A:349:ARG:HH21	1:A:376:THR:CG2	2.13	0.62
1:A:452:LEU:HD21	1:A:467:ARG:HG3	1.81	0.62
1:A:118:GLY:HA3	1:A:122:SER:O	2.00	0.61
1:A:68:GLN:HE21	1:A:68:GLN:HA	1.65	0.61
1:A:316:LYS:CD	1:A:414:PHE:HB3	2.32	0.60
1:A:503:ILE:HG22	1:A:512:VAL:HG22	1.83	0.60
1:A:451:PRO:HB2	1:A:463:GLU:HA	1.83	0.60
1:A:44:ARG:NH1	1:A:267:ARG:HA	2.16	0.60
1:A:79:SER:O	1:A:83:MET:HB3	2.01	0.59
1:A:83:MET:HE3	1:A:442:TYR:CE2	2.37	0.59
1:A:397:ASP:OD1	1:A:517:ARG:NH1	2.35	0.59
1:A:197:PHE:CB	1:A:223:ILE:HB	2.32	0.59
1:A:270:LYS:HG3	1:A:271:PRO:HD2	1.85	0.58
1:A:36:ALA:CB	1:A:175:MET:HE3	2.33	0.58
1:A:451:PRO:HG2	1:A:466:SER:HB2	1.85	0.58
1:A:223:ILE:HA	1:A:320:LEU:O	2.03	0.58
1:A:68:GLN:HA	1:A:68:GLN:NE2	2.19	0.57
1:A:46:ARG:NE	1:A:163:GLU:OE1	2.38	0.57
1:A:263:ILE:O	1:A:267:ARG:HG3	2.05	0.57
1:A:454:LYS:O	1:A:456:LEU:N	2.38	0.56
1:A:321:LEU:N	1:A:321:LEU:HD12	2.20	0.56
1:A:47:ARG:HB3	1:A:171:LEU:CD1	2.36	0.56
1:A:329:SER:N	1:A:392:ASP:OD1	2.39	0.56
1:A:202:GLY:O	1:A:206:VAL:HG23	2.06	0.55
1:A:113:VAL:CG1	1:A:146:LEU:HD23	2.35	0.55
1:A:260:GLU:H	1:A:260:GLU:CD	2.10	0.55
1:A:44:ARG:O	1:A:45:PHE:HB2	2.07	0.55

Continued on next page...

Continued from previous page...

Atom-1	Atom-2	Interatomic distance (Å)	Clash overlap (Å)
1:A:34:PRO:HB3	1:A:96:TYR:CE1	2.42	0.55
1:A:167:ASN:N	1:A:167:ASN:HD22	2.05	0.55
1:A:167:ASN:ND2	1:A:294:PRO:HA	2.22	0.55
1:A:168:VAL:O	1:A:171:LEU:HB2	2.07	0.54
1:A:450:LEU:O	1:A:453:VAL:HG13	2.07	0.54
1:A:469:ILE:HD11	1:A:505:LEU:HG	1.89	0.54
1:A:502:PHE:CZ	1:A:513:HIS:HB2	2.42	0.54
1:A:244:ARG:NH1	1:A:291:SER:O	2.34	0.54
1:A:6:LEU:CD2	1:A:28:SER:HB3	2.38	0.54
1:A:336:ALA:HB3	1:A:339:PHE:CD2	2.43	0.54
1:A:453:VAL:CG2	1:A:456:LEU:HG	2.36	0.54
1:A:37:GLU:HG2	1:A:50:PRO:O	2.08	0.53
1:A:289:ARG:NH1	1:A:399:ASN:OD1	2.41	0.53
1:A:515:ARG:HB3	1:A:518:VAL:CG2	2.37	0.53
1:A:375:TYR:HB2	1:A:394:ILE:HD11	1.90	0.53
1:A:412:THR:HG21	1:A:495:PHE:HD1	1.74	0.53
1:A:321:LEU:HD21	1:A:408:VAL:HG22	1.91	0.53
1:A:288:PHE:O	1:A:289:ARG:HD3	2.09	0.52
1:A:352:PHE:O	1:A:356:VAL:HG12	2.09	0.52
1:A:412:THR:O	1:A:412:THR:HG22	2.09	0.52
1:A:155:PHE:CE1	1:A:294:PRO:HD3	2.45	0.52
1:A:236:VAL:HG13	1:A:293:VAL:CG2	2.40	0.52
1:A:48:PRO:CG	1:A:171:LEU:HB3	2.39	0.52
1:A:353:MET:O	1:A:356:VAL:HG13	2.10	0.52
1:A:43:MET:O	1:A:46:ARG:HB2	2.09	0.52
1:A:390:GLY:O	1:A:394:ILE:HD12	2.10	0.52
1:A:75:PHE:O	1:A:78:PHE:HB3	2.10	0.52
1:A:416:ASN:ND2	3:A:858:HOH:O	2.41	0.52
1:A:221:ARG:NH1	1:A:318:GLN:OE1	2.43	0.51
1:A:65:ASN:HB3	1:A:89:GLU:O	2.11	0.51
1:A:445:GLU:O	1:A:451:PRO:HD3	2.10	0.51
1:A:478:LYS:HG2	1:A:479:THR:HG23	1.90	0.51
1:A:48:PRO:CD	1:A:171:LEU:HB3	2.40	0.51
1:A:6:LEU:HD13	1:A:18:THR:HA	1.92	0.51
1:A:48:PRO:HG3	1:A:171:LEU:C	2.31	0.51
1:A:139:GLU:HG3	1:A:474:ALA:CB	2.40	0.51
1:A:238:VAL:HG23	3:A:904:HOH:O	2.09	0.51
1:A:316:LYS:CE	1:A:414:PHE:HB3	2.41	0.51
1:A:412:THR:HG21	1:A:495:PHE:CD1	2.46	0.51
1:A:39:PRO:HG2	1:A:92:GLU:O	2.11	0.51
1:A:248:LEU:HD13	1:A:292:PHE:HZ	1.76	0.50

Continued on next page...

Continued from previous page...

Atom-1	Atom-2	Interatomic distance (Å)	Clash overlap (Å)
1:A:306:GLU:HA	1:A:306:GLU:OE1	2.12	0.50
1:A:236:VAL:O	1:A:295:VAL:HA	2.11	0.49
1:A:321:LEU:HD12	1:A:321:LEU:H	1.76	0.49
1:A:319:ILE:O	1:A:319:ILE:HG13	2.12	0.49
1:A:411:TYR:CE2	1:A:415:GLY:HA3	2.47	0.49
1:A:115:ILE:HG23	1:A:146:LEU:HD11	1.93	0.49
1:A:375:TYR:CB	1:A:394:ILE:HD11	2.42	0.49
1:A:453:VAL:HG22	1:A:453:VAL:O	2.12	0.49
1:A:330:PHE:HD1	2:A:700:MF2:H122	1.77	0.49
1:A:426:ARG:CZ	1:A:434:GLU:HA	2.41	0.49
1:A:37:GLU:HB2	1:A:49:GLU:HB3	1.95	0.49
1:A:347:ILE:CG2	1:A:348:SER:N	2.76	0.49
1:A:68:GLN:HG3	1:A:275:ILE:HD11	1.95	0.49
1:A:98:ASN:HD22	1:A:145:SER:HB2	1.78	0.49
1:A:317:THR:OG1	1:A:318:GLN:N	2.46	0.48
1:A:23:LEU:O	1:A:24:SER:OG	2.23	0.48
1:A:270:LYS:HG3	1:A:271:PRO:CD	2.43	0.48
1:A:309:LEU:HB3	1:A:410:LYS:HG2	1.95	0.48
1:A:251:ASN:HB3	1:A:277:VAL:HG21	1.96	0.48
1:A:34:PRO:HG3	1:A:58:TRP:CH2	2.49	0.48
1:A:321:LEU:O	1:A:420:LEU:HA	2.14	0.48
1:A:419:TYR:CZ	1:A:482:PRO:HD2	2.49	0.48
1:A:139:GLU:HG3	1:A:474:ALA:HB2	1.96	0.48
1:A:328:GLY:HA3	1:A:395:VAL:HB	1.96	0.48
1:A:45:PHE:CE2	1:A:266:LEU:HB3	2.49	0.47
1:A:44:ARG:O	1:A:267:ARG:NE	2.45	0.47
1:A:127:LEU:HB2	1:A:130:TYR:CD2	2.49	0.47
1:A:528:LEU:HB3	1:A:529:PRO:CD	2.43	0.47
1:A:75:PHE:N	1:A:76:PRO:HD3	2.30	0.47
1:A:185:GLN:HG2	1:A:186:PHE:N	2.30	0.47
1:A:325:LYS:HB2	1:A:424:ASN:CB	2.45	0.47
1:A:158:LEU:HA	1:A:158:LEU:HD23	1.74	0.47
1:A:240:GLU:OE1	1:A:240:GLU:HA	2.15	0.47
1:A:323:VAL:HG12	1:A:404:LEU:HD13	1.97	0.46
1:A:193:THR:HG22	1:A:193:THR:O	2.15	0.46
1:A:163:GLU:CB	1:A:267:ARG:HH22	2.25	0.46
1:A:33:ILE:CD1	1:A:99:ILE:HD12	2.46	0.46
1:A:167:ASN:N	1:A:167:ASN:ND2	2.63	0.46
1:A:111:VAL:CG2	1:A:194:VAL:HB	2.46	0.46
1:A:316:LYS:HE2	1:A:414:PHE:HB3	1.97	0.46
1:A:421:TYR:CD1	1:A:421:TYR:C	2.89	0.46

Continued on next page...

Continued from previous page...

Atom-1	Atom-2	Interatomic distance (Å)	Clash overlap (Å)
1:A:34:PRO:HG3	1:A:58:TRP:CZ2	2.49	0.46
1:A:163:GLU:HB2	1:A:263:ILE:HD13	1.97	0.46
1:A:31:LEU:O	1:A:60:ALA:HA	2.15	0.46
1:A:47:ARG:HB3	1:A:171:LEU:HD12	1.97	0.45
1:A:120:PHE:HB2	1:A:293:VAL:HG12	1.98	0.45
1:A:493:PRO:HD2	1:A:503:ILE:CG2	2.46	0.45
1:A:323:VAL:HG21	1:A:401:ILE:HG12	1.97	0.45
1:A:401:ILE:CG2	1:A:517:ARG:HG3	2.33	0.45
1:A:478:LYS:HG2	1:A:479:THR:N	2.31	0.45
1:A:49:GLU:N	1:A:175:MET:HE1	2.32	0.45
1:A:500:GLN:H	1:A:500:GLN:HG2	1.42	0.45
1:A:287:ILE:HG12	1:A:358:LEU:HB3	1.98	0.45
1:A:349:ARG:NH1	1:A:381:ASP:O	2.49	0.45
1:A:478:LYS:HE2	1:A:479:THR:HG23	1.98	0.45
1:A:450:LEU:N	1:A:451:PRO:HD3	2.32	0.45
1:A:22:VAL:HG11	1:A:137:TYR:CB	2.47	0.45
1:A:287:ILE:CD1	1:A:335:GLY:HA3	2.46	0.45
1:A:418:THR:H	1:A:494:LEU:CD2	2.30	0.45
1:A:82:GLU:HA	1:A:85:ASN:ND2	2.18	0.45
1:A:83:MET:HE3	1:A:442:TYR:CZ	2.53	0.44
1:A:78:PHE:HE1	3:A:921:HOH:O	2.00	0.44
1:A:92:GLU:HA	3:A:832:HOH:O	2.16	0.44
1:A:167:ASN:HD21	1:A:295:VAL:N	1.99	0.44
1:A:511:LYS:HG2	1:A:513:HIS:CE1	2.52	0.44
1:A:45:PHE:O	1:A:168:VAL:HG11	2.18	0.44
1:A:52:LYS:HD3	1:A:53:PRO:HD3	1.99	0.44
1:A:393:ASP:O	1:A:397:ASP:HB2	2.18	0.44
1:A:14:LYS:HB3	1:A:57:VAL:HG22	2.00	0.44
1:A:35:PHE:CD1	1:A:35:PHE:C	2.91	0.44
1:A:66:ASN:HD22	1:A:124:SER:CB	2.31	0.44
1:A:421:TYR:HB2	1:A:505:LEU:HD22	1.99	0.44
1:A:52:LYS:HD3	1:A:52:LYS:HA	1.67	0.44
1:A:211:LEU:HD13	1:A:305:LEU:HD22	2.00	0.43
1:A:289:ARG:HG3	3:A:837:HOH:O	2.18	0.43
1:A:504:ASP:CG	1:A:513:HIS:HE2	2.20	0.43
1:A:36:ALA:CB	1:A:175:MET:CE	2.97	0.43
1:A:44:ARG:NH1	1:A:266:LEU:O	2.51	0.43
1:A:293:VAL:HB	1:A:294:PRO:HD2	1.99	0.43
1:A:103:SER:HA	1:A:104:PRO:C	2.39	0.43
1:A:258:SER:OG	1:A:261:GLU:CG	2.67	0.43
1:A:131:ASN:C	1:A:131:ASN:HD22	2.21	0.43

Continued on next page...

Continued from previous page...

Atom-1	Atom-2	Interatomic distance (Å)	Clash overlap (Å)
1:A:192:LYS:HD3	1:A:192:LYS:HA	1.66	0.43
1:A:48:PRO:C	1:A:175:MET:HE1	2.38	0.43
1:A:348:SER:O	1:A:349:ARG:C	2.57	0.43
1:A:110:THR:HG23	1:A:193:THR:HG22	2.00	0.43
1:A:366:LEU:O	1:A:369:ASP:HB2	2.19	0.43
1:A:509:PRO:O	1:A:510:MET:C	2.57	0.43
1:A:105:ARG:HA	1:A:106:PRO:HD3	1.84	0.42
1:A:123:GLY:HA2	3:A:812:HOH:O	2.17	0.42
1:A:36:ALA:HB1	1:A:175:MET:HE3	2.01	0.42
1:A:83:MET:HE1	3:A:807:HOH:O	2.18	0.42
1:A:234:ALA:O	1:A:294:PRO:HG2	2.19	0.42
1:A:68:GLN:NE2	1:A:90:MET:HB3	2.34	0.42
1:A:173:GLN:HE22	1:A:205:SER:CB	2.31	0.42
1:A:44:ARG:O	1:A:45:PHE:CB	2.68	0.42
1:A:309:LEU:HD21	1:A:407:PHE:HD1	1.84	0.42
1:A:436:MET:HB3	1:A:439:ILE:HG12	2.00	0.42
1:A:22:VAL:HG21	1:A:27:ILE:HG12	2.01	0.42
1:A:124:SER:HB2	1:A:127:LEU:CD2	2.50	0.42
1:A:246:VAL:HG13	1:A:256:LEU:HD13	2.01	0.42
1:A:478:LYS:HG2	1:A:479:THR:CG2	2.50	0.42
1:A:531:LEU:HD23	1:A:531:LEU:C	2.39	0.42
1:A:478:LYS:HE2	1:A:479:THR:CG2	2.50	0.41
1:A:176:ALA:O	1:A:180:VAL:HG23	2.20	0.41
1:A:282:LEU:HA	1:A:283:PRO:HD3	1.85	0.41
1:A:111:VAL:HG23	1:A:194:VAL:HB	2.01	0.41
1:A:133:LYS:O	1:A:137:TYR:HB2	2.20	0.41
1:A:371:VAL:O	1:A:374:GLN:HB3	2.21	0.41
1:A:111:VAL:HG23	1:A:194:VAL:CB	2.51	0.41
1:A:33:ILE:HD12	1:A:99:ILE:HD12	2.02	0.41
1:A:241:GLY:O	1:A:245:ALA:HB2	2.20	0.41
1:A:359:SER:C	1:A:361:PRO:HD3	2.40	0.41
1:A:36:ALA:HB2	1:A:175:MET:CE	2.50	0.41
1:A:66:ASN:ND2	1:A:124:SER:CB	2.82	0.41
1:A:256:LEU:CD2	1:A:262:LEU:HD13	2.50	0.41
1:A:22:VAL:CG2	1:A:27:ILE:HG12	2.51	0.41
1:A:115:ILE:CG2	1:A:173:GLN:NE2	2.83	0.41
1:A:197:PHE:HA	1:A:223:ILE:O	2.21	0.41
1:A:246:VAL:HA	1:A:262:LEU:HD21	2.02	0.41
1:A:332:LEU:CD1	1:A:392:ASP:HA	2.52	0.40
1:A:66:ASN:OD1	1:A:88:ARG:HB2	2.20	0.40
1:A:352:PHE:CD1	1:A:352:PHE:C	2.94	0.40

Continued on next page...

Continued from previous page...

Atom-1	Atom-2	Interatomic distance (Å)	Clash overlap (Å)
1:A:381:ASP:HA	3:A:890:HOH:O	2.21	0.40
1:A:420:LEU:HD23	1:A:502:PHE:HB3	2.03	0.40
1:A:430:LEU:HD21	1:A:442:TYR:CD2	2.56	0.40
1:A:475:THR:HG22	1:A:481:ASN:O	2.22	0.40
1:A:113:VAL:HG11	1:A:177:LEU:CD2	2.51	0.40
1:A:221:ARG:NH1	1:A:480:GLY:CA	2.85	0.40
1:A:380:ASP:O	1:A:380:ASP:CG	2.59	0.40

There are no symmetry-related clashes.

5.3 Torsion angles [i](#)

5.3.1 Protein backbone [i](#)

In the following table, the Percentiles column shows the percent Ramachandran outliers of the chain as a percentile score with respect to all X-ray entries followed by that with respect to entries of similar resolution.

The Analysed column shows the number of residues for which the backbone conformation was analysed, and the total number of residues.

Mol	Chain	Analysed	Favoured	Allowed	Outliers	Percentiles	
1	A	523/537 (97%)	448 (86%)	64 (12%)	11 (2%)	7	18

All (11) Ramachandran outliers are listed below:

Mol	Chain	Res	Type
1	A	412	THR
1	A	455	GLU
1	A	108	SER
1	A	413	LYS
1	A	515	ARG
1	A	291	SER
1	A	381	ASP
1	A	137	TYR
1	A	380	ASP
1	A	118	GLY
1	A	328	GLY

5.3.2 Protein sidechains ⓘ

In the following table, the Percentiles column shows the percent sidechain outliers of the chain as a percentile score with respect to all X-ray entries followed by that with respect to entries of similar resolution.

The Analysed column shows the number of residues for which the sidechain conformation was analysed, and the total number of residues.

Mol	Chain	Analysed	Rotameric	Outliers	Percentiles
1	A	460/469 (98%)	374 (81%)	86 (19%)	1 4

All (86) residues with a non-rotameric sidechain are listed below:

Mol	Chain	Res	Type
1	A	7	LEU
1	A	9	ASN
1	A	14	LYS
1	A	19	ARG
1	A	28	SER
1	A	42	ASN
1	A	47	ARG
1	A	49	GLU
1	A	52	LYS
1	A	55	SER
1	A	71	VAL
1	A	72	ASP
1	A	74	GLN
1	A	83	MET
1	A	98	ASN
1	A	108	SER
1	A	111	VAL
1	A	129	VAL
1	A	131	ASN
1	A	133	LYS
1	A	135	LEU
1	A	140	GLU
1	A	143	LEU
1	A	147	SER
1	A	161	SER
1	A	162	GLN
1	A	178	GLN
1	A	185	GLN
1	A	192	LYS
1	A	194	VAL

Continued on next page...

Continued from previous page...

Mol	Chain	Res	Type
1	A	197	PHE
1	A	215	SER
1	A	216	ARG
1	A	218	LEU
1	A	221	ARG
1	A	228	SER
1	A	231	CYS
1	A	238	VAL
1	A	242	ARG
1	A	243	ARG
1	A	251	ASN
1	A	261	GLU
1	A	266	LEU
1	A	270	LYS
1	A	284	PHE
1	A	288	PHE
1	A	289	ARG
1	A	291	SER
1	A	303	THR
1	A	321	LEU
1	A	330	PHE
1	A	333	LEU
1	A	340	SER
1	A	341	LYS
1	A	349	ARG
1	A	350	GLU
1	A	353	MET
1	A	356	VAL
1	A	358	LEU
1	A	365	ASP
1	A	366	LEU
1	A	373	LEU
1	A	383	ASN
1	A	410	LYS
1	A	413	LYS
1	A	426	ARG
1	A	450	LEU
1	A	453	VAL
1	A	454	LYS
1	A	462	GLU
1	A	463	GLU
1	A	468	ARG

Continued on next page...

Continued from previous page...

Mol	Chain	Res	Type
1	A	469	ILE
1	A	473	TRP
1	A	478	LYS
1	A	490	SER
1	A	494	LEU
1	A	497	THR
1	A	499	GLU
1	A	500	GLN
1	A	505	LEU
1	A	509	PRO
1	A	517	ARG
1	A	518	VAL
1	A	530	LYS
1	A	531	LEU

Sometimes sidechains can be flipped to improve hydrogen bonding and reduce clashes. All (7) such sidechains are listed below:

Mol	Chain	Res	Type
1	A	9	ASN
1	A	65	ASN
1	A	98	ASN
1	A	131	ASN
1	A	167	ASN
1	A	178	GLN
1	A	383	ASN

5.3.3 RNA ⓘ

There are no RNA molecules in this entry.

5.4 Non-standard residues in protein, DNA, RNA chains ⓘ

There are no non-standard protein/DNA/RNA residues in this entry.

5.5 Carbohydrates ⓘ

There are no monosaccharides in this entry.

5.6 Ligand geometry

1 ligand is modelled in this entry.

In the following table, the Counts columns list the number of bonds (or angles) for which Mogul statistics could be retrieved, the number of bonds (or angles) that are observed in the model and the number of bonds (or angles) that are defined in the Chemical Component Dictionary. The Link column lists molecule types, if any, to which the group is linked. The Z score for a bond length (or angle) is the number of standard deviations the observed value is removed from the expected value. A bond length (or angle) with $|Z| > 2$ is considered an outlier worth inspection. RMSZ is the root-mean-square of all Z scores of the bond lengths (or angles).

Mol	Type	Chain	Res	Link	Bond lengths			Bond angles		
					Counts	RMSZ	# $ Z > 2$	Counts	RMSZ	# $ Z > 2$
2	MF2	A	700	1	19,19,19	1.55	2 (10%)	21,22,22	1.11	1 (4%)

In the following table, the Chirals column lists the number of chiral outliers, the number of chiral centers analysed, the number of these observed in the model and the number defined in the Chemical Component Dictionary. Similar counts are reported in the Torsion and Rings columns. '-' means no outliers of that kind were identified.

Mol	Type	Chain	Res	Link	Chirals	Torsions	Rings
2	MF2	A	700	1	-	8/11/23/23	0/1/1/1

All (2) bond length outliers are listed below:

Mol	Chain	Res	Type	Atoms	Z	Observed(Å)	Ideal(Å)
2	A	700	MF2	C18-N17	4.69	1.42	1.33
2	A	700	MF2	C6-N1	2.03	1.50	1.46

All (1) bond angle outliers are listed below:

Mol	Chain	Res	Type	Atoms	Z	Observed(°)	Ideal(°)
2	A	700	MF2	O19-C18-N17	-4.33	120.52	124.89

There are no chirality outliers.

All (8) torsion outliers are listed below:

Mol	Chain	Res	Type	Atoms
2	A	700	MF2	C10-C11-C12-C13
2	A	700	MF2	C11-C10-C9-N1
2	A	700	MF2	C12-C13-C14-C15
2	A	700	MF2	C13-C14-C15-C16
2	A	700	MF2	C14-C15-C16-N17

Continued on next page...

Continued from previous page...

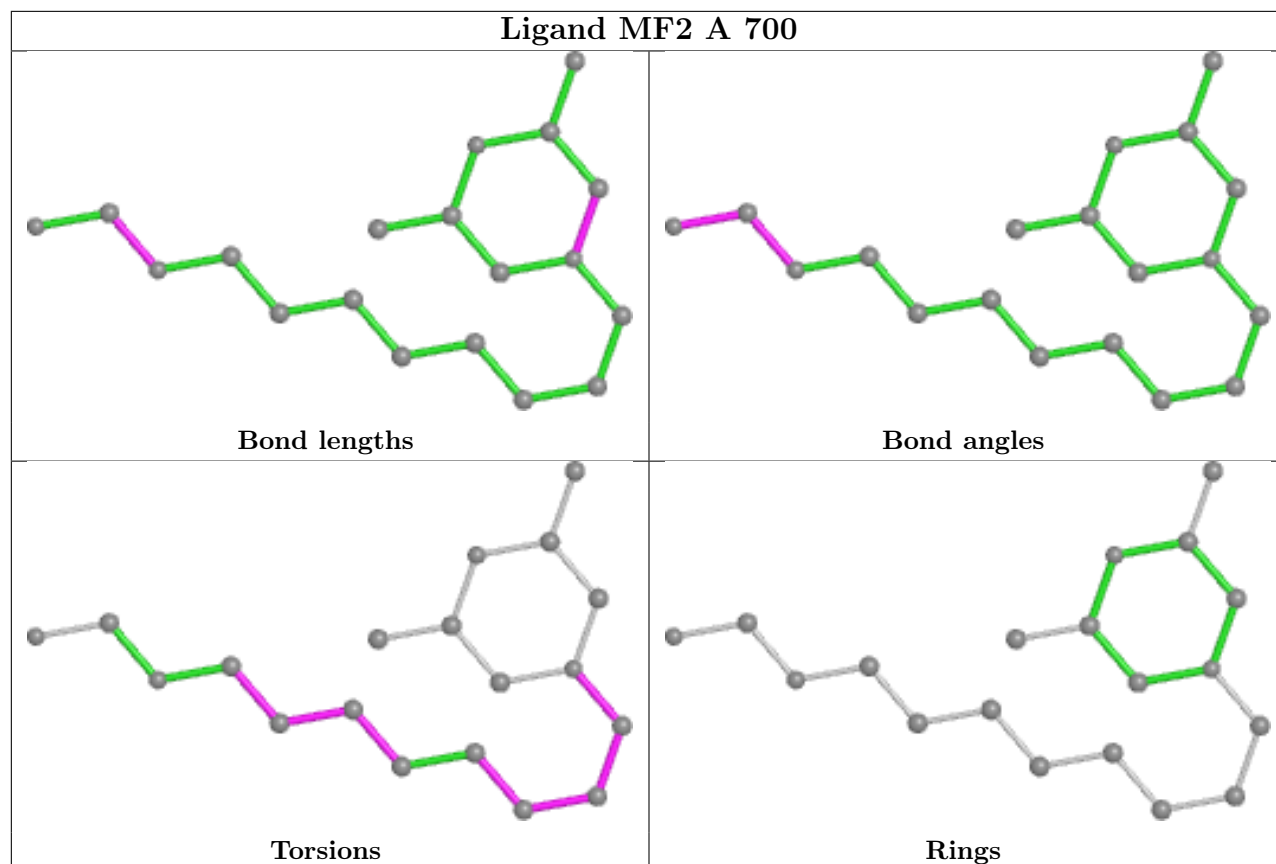
Mol	Chain	Res	Type	Atoms
2	A	700	MF2	C9-C10-C11-C12
2	A	700	MF2	C10-C9-N1-C6
2	A	700	MF2	C10-C9-N1-C2

There are no ring outliers.

1 monomer is involved in 1 short contact:

Mol	Chain	Res	Type	Clashes	Symm-Clashes
2	A	700	MF2	1	0

The following is a two-dimensional graphical depiction of Mogul quality analysis of bond lengths, bond angles, torsion angles, and ring geometry for all instances of the Ligand of Interest. In addition, ligands with molecular weight > 250 and outliers as shown on the validation Tables will also be included. For torsion angles, if less than 5% of the Mogul distribution of torsion angles is within 10 degrees of the torsion angle in question, then that torsion angle is considered an outlier. Any bond that is central to one or more torsion angles identified as an outlier by Mogul will be highlighted in the graph. For rings, the root-mean-square deviation (RMSD) between the ring in question and similar rings identified by Mogul is calculated over all ring torsion angles. If the average RMSD is greater than 60 degrees and the minimal RMSD between the ring in question and any Mogul-identified rings is also greater than 60 degrees, then that ring is considered an outlier. The outliers are highlighted in purple. The color gray indicates Mogul did not find sufficient equivalents in the CSD to analyse the geometry.



5.7 Other polymers [i](#)

There are no such residues in this entry.

5.8 Polymer linkage issues [i](#)

There are no chain breaks in this entry.

6 Fit of model and data [i](#)

6.1 Protein, DNA and RNA chains [i](#)

In the following table, the column labelled ‘#RSRZ> 2’ contains the number (and percentage) of RSRZ outliers, followed by percent RSRZ outliers for the chain as percentile scores relative to all X-ray entries and entries of similar resolution. The OWAB column contains the minimum, median, 95th percentile and maximum values of the occupancy-weighted average B-factor per residue. The column labelled ‘Q< 0.9’ lists the number of (and percentage) of residues with an average occupancy less than 0.9.

Mol	Chain	Analysed	<RSRZ>	#RSRZ>2	OWAB(Å ²)	Q<0.9
1	A	527/537 (98%)	-0.69	4 (0%) 86 87	16, 28, 40, 50	23 (4%)

All (4) RSRZ outliers are listed below:

Mol	Chain	Res	Type	RSRZ
1	A	535	THR	3.1
1	A	479	THR	2.5
1	A	55	SER	2.3
1	A	534	ALA	2.2

6.2 Non-standard residues in protein, DNA, RNA chains [i](#)

There are no non-standard protein/DNA/RNA residues in this entry.

6.3 Carbohydrates [i](#)

There are no monosaccharides in this entry.

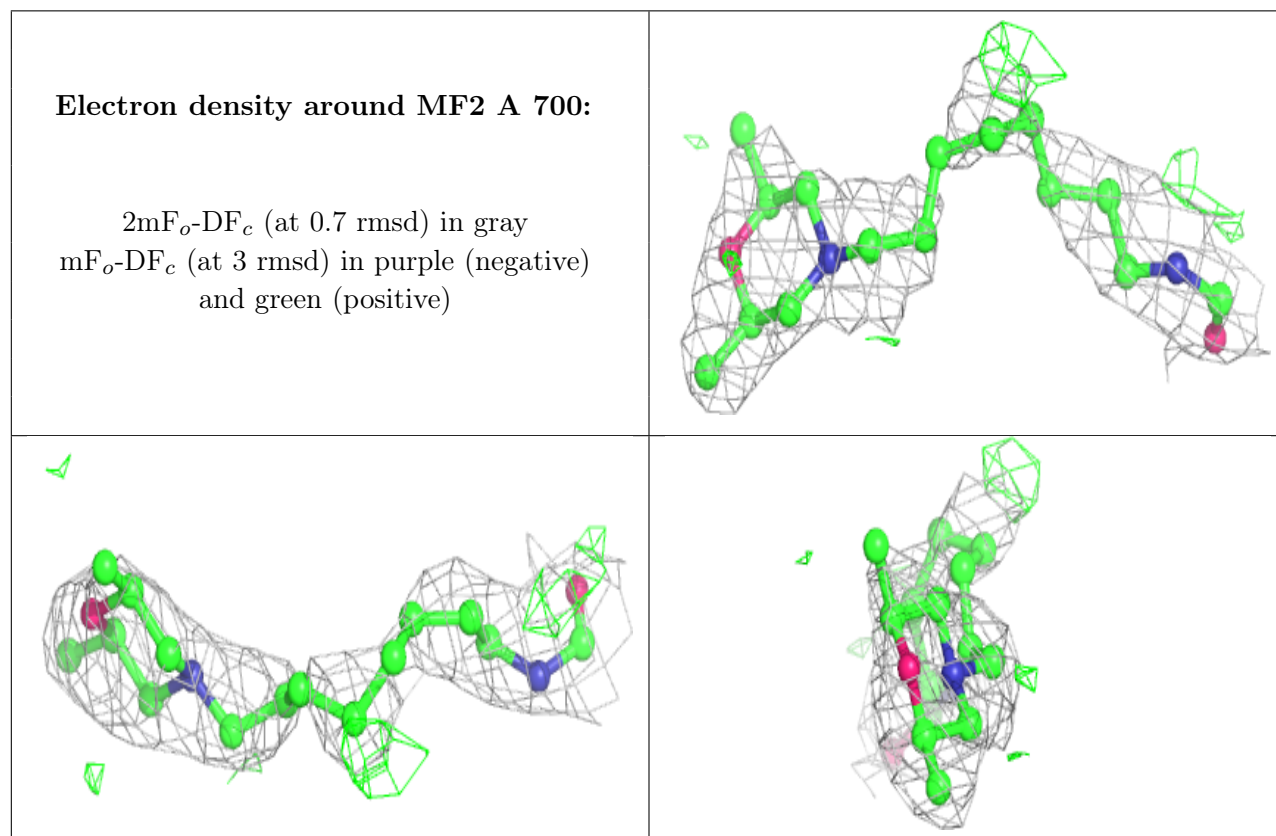
6.4 Ligands [i](#)

In the following table, the Atoms column lists the number of modelled atoms in the group and the number defined in the chemical component dictionary. The B-factors column lists the minimum, median, 95th percentile and maximum values of B factors of atoms in the group. The column labelled ‘Q< 0.9’ lists the number of atoms with occupancy less than 0.9.

Mol	Type	Chain	Res	Atoms	RSCC	RSR	B-factors(Å ²)	Q<0.9
2	MF2	A	700	19/19	0.90	0.19	31,39,44,45	0

The following is a graphical depiction of the model fit to experimental electron density of all instances of the Ligand of Interest. In addition, ligands with molecular weight > 250 and outliers

as shown on the geometry validation Tables will also be included. Each fit is shown from different orientation to approximate a three-dimensional view.



6.5 Other polymers [i](#)

There are no such residues in this entry.