



# Full wwPDB X-ray Structure Validation Report ⓘ

Feb 10, 2022 – 01:14 pm GMT

PDB ID : 7ODJ  
Title : Exo-mannosidase from *Cellvibrio mixtus* bound to N-alkyl mannocyclophellitol aziridine  
Authors : McGregor, N.G.S.; Davies, G.J.  
Deposited on : 2021-04-29  
Resolution : 1.30 Å(reported)

This is a Full wwPDB X-ray Structure Validation Report for a publicly released PDB entry.

We welcome your comments at [validation@mail.wwpdb.org](mailto:validation@mail.wwpdb.org)

A user guide is available at

<https://www.wwpdb.org/validation/2017/XrayValidationReportHelp>

with specific help available everywhere you see the ⓘ symbol.

---

The following versions of software and data (see [references ⓘ](#)) were used in the production of this report:

MolProbity : 4.02b-467  
Mogul : 1.8.4, CSD as541be (2020)  
Xtriage (Phenix) : 1.13  
EDS : 2.26  
buster-report : 1.1.7 (2018)  
Percentile statistics : 20191225.v01 (using entries in the PDB archive December 25th 2019)  
Refmac : 5.8.0267  
CCP4 : 7.1.010 (Gargrove)  
Ideal geometry (proteins) : Engh & Huber (2001)  
Ideal geometry (DNA, RNA) : Parkinson et al. (1996)  
Validation Pipeline (wwPDB-VP) : 2.26

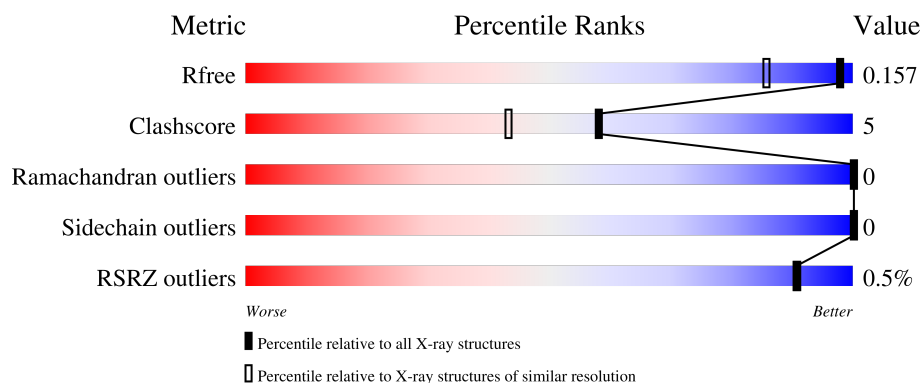
# 1 Overall quality at a glance

The following experimental techniques were used to determine the structure:

*X-RAY DIFFRACTION*


The reported resolution of this entry is 1.30 Å.

Percentile scores (ranging between 0-100) for global validation metrics of the entry are shown in the following graphic. The table shows the number of entries on which the scores are based.



Metric	Whole archive (#Entries)	Similar resolution (#Entries, resolution range(Å))
$R_{free}$	130704	1058 (1.30-1.30)
Clashscore	141614	1101 (1.30-1.30)
Ramachandran outliers	138981	1058 (1.30-1.30)
Sidechain outliers	138945	1058 (1.30-1.30)
RSRZ outliers	127900	1029 (1.30-1.30)

The table below summarises the geometric issues observed across the polymeric chains and their fit to the electron density. The red, orange, yellow and green segments of the lower bar indicate the fraction of residues that contain outliers for  $\geq 3$ , 2, 1 and 0 types of geometric quality criteria respectively. A grey segment represents the fraction of residues that are not modelled. The numeric value for each fraction is indicated below the corresponding segment, with a dot representing fractions  $\leq 5\%$ . The upper red bar (where present) indicates the fraction of residues that have poor fit to the electron density. The numeric value is given above the bar.

Mol	Chain	Length	Quality of chain
1	AAA	440	

## 2 Entry composition [i](#)

There are 5 unique types of molecules in this entry. The entry contains 7294 atoms, of which 3362 are hydrogens and 0 are deuteriums.

In the tables below, the ZeroOcc column contains the number of atoms modelled with zero occupancy, the AltConf column contains the number of residues with at least one atom in alternate conformation and the Trace column contains the number of residues modelled with at most 2 atoms.

- Molecule 1 is a protein called Man5A.

Mol	Chain	Residues	Atoms						ZeroOcc	AltConf	Trace
			Total	C	H	N	O	S			
1	AAA	409	6793	2223	3330	569	652	19	87	29	0

There are 9 discrepancies between the modelled and reference sequences:

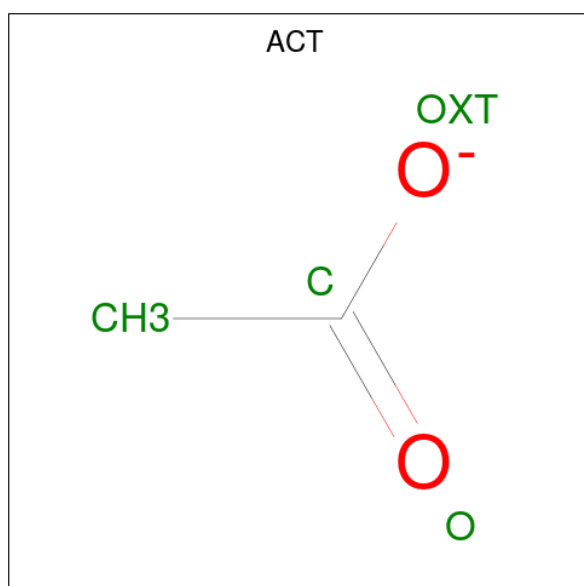
Chain	Residue	Modelled	Actual	Comment	Reference
AAA	1	MET	-	initiating methionine	UNP Q6QT42
AAA	433	LEU	-	expression tag	UNP Q6QT42
AAA	434	GLU	-	expression tag	UNP Q6QT42
AAA	435	HIS	-	expression tag	UNP Q6QT42
AAA	436	HIS	-	expression tag	UNP Q6QT42
AAA	437	HIS	-	expression tag	UNP Q6QT42
AAA	438	HIS	-	expression tag	UNP Q6QT42
AAA	439	HIS	-	expression tag	UNP Q6QT42
AAA	440	HIS	-	expression tag	UNP Q6QT42

- Molecule 2 is SULFATE ION (three-letter code: SO4) (formula: O<sub>4</sub>S).



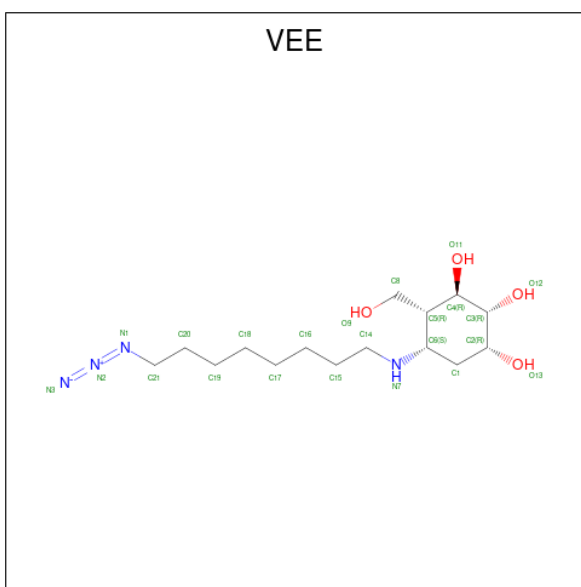
Mol	Chain	Residues	Atoms			ZeroOcc	AltConf
2	AAA	1	Total	O	S	0	0
			5	4	1		
2	AAA	1	Total	O	S	0	0
			5	4	1		
2	AAA	1	Total	O	S	0	0
			5	4	1		
2	AAA	1	Total	O	S	0	0
			5	4	1		

- Molecule 3 is ACETATE ION (three-letter code: ACT) (formula:  $C_2H_3O_2$ ).



Mol	Chain	Residues	Atoms				ZeroOcc	AltConf
3	AAA	1	Total	C	H	O	0	0
			7	2	3	2		

- Molecule 4 is (1R,2S,3R,4S,5R,6R)-5-(8-azidooctylamino)-6-(hydroxymethyl)cyclohexane-1,2,3,4-tetrol (three-letter code: VEE) (formula:  $C_{15}H_{30}N_4O_4$ ) (labeled as "Ligand of Interest" by depositor).



Mol	Chain	Residues	Atoms					ZeroOcc	AltConf
4	AAA	1	Total	C	H	N	O	5	0
			49	15	29	1	4		

- Molecule 5 is water.

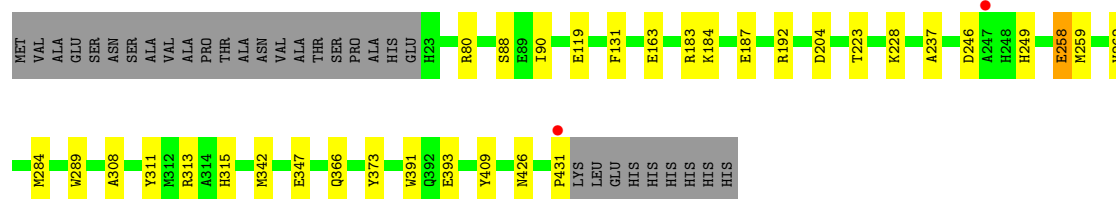
Mol	Chain	Residues	Atoms	ZeroOcc	AltConf
5	AAA	424	Total O 425 425	0	1

### 3 Residue-property plots

These plots are drawn for all protein, RNA, DNA and oligosaccharide chains in the entry. The first graphic for a chain summarises the proportions of the various outlier classes displayed in the second graphic. The second graphic shows the sequence view annotated by issues in geometry and electron density. Residues are color-coded according to the number of geometric quality criteria for which they contain at least one outlier: green = 0, yellow = 1, orange = 2 and red = 3 or more. A red dot above a residue indicates a poor fit to the electron density ( $RSRZ > 2$ ). Stretches of 2 or more consecutive residues without any outlier are shown as a green connector. Residues present in the sample, but not in the model, are shown in grey.

- Molecule 1: Man5A

Chain AAA: 



## 4 Data and refinement statistics

Property	Value	Source
Space group	P 21 21 2	Depositor
Cell constants a, b, c, $\alpha$ , $\beta$ , $\gamma$	91.81Å 102.23Å 50.68Å 90.00° 90.00° 90.00°	Depositor
Resolution (Å)	68.40 – 1.30 68.31 – 1.30	Depositor EDS
% Data completeness (in resolution range)	98.6 (68.40-1.30) 98.5 (68.31-1.30)	Depositor EDS
$R_{merge}$	0.12	Depositor
$R_{sym}$	(Not available)	Depositor
$\langle I/\sigma(I) \rangle$ <sup>1</sup>	1.35 (at 1.30Å)	Xtriage
Refinement program	REFMAC 5.8.0267, REFMAC 5.8.0267, REFMAC 5.8.0267	Depositor
R, $R_{free}$	0.125 , 0.158 0.124 , 0.157	Depositor DCC
$R_{free}$ test set	5812 reflections (5.01%)	wwPDB-V
Wilson B-factor (Å <sup>2</sup> )	13.9	Xtriage
Anisotropy	0.107	Xtriage
Bulk solvent $k_{sol}$ (e/Å <sup>3</sup> ), $B_{sol}$ (Å <sup>2</sup> )	(Not available) , (Not available)	EDS
L-test for twinning <sup>2</sup>	$\langle  L  \rangle = 0.50$ , $\langle L^2 \rangle = 0.34$	Xtriage
Estimated twinning fraction	No twinning to report.	Xtriage
$F_o, F_c$ correlation	0.98	EDS
Total number of atoms	7294	wwPDB-V
Average B, all atoms (Å <sup>2</sup> )	17.0	wwPDB-V

Xtriage's analysis on translational NCS is as follows: *The largest off-origin peak in the Patterson function is 6.02% of the height of the origin peak. No significant pseudotranslation is detected.*

<sup>1</sup>Intensities estimated from amplitudes.

<sup>2</sup>Theoretical values of  $\langle |L| \rangle$ ,  $\langle L^2 \rangle$  for acentric reflections are 0.5, 0.333 respectively for untwinned datasets, and 0.375, 0.2 for perfectly twinned datasets.

## 5 Model quality

### 5.1 Standard geometry

Bond lengths and bond angles in the following residue types are not validated in this section: VEE, SO4, ACT

The Z score for a bond length (or angle) is the number of standard deviations the observed value is removed from the expected value. A bond length (or angle) with  $|Z| > 5$  is considered an outlier worth inspection. RMSZ is the root-mean-square of all Z scores of the bond lengths (or angles).

Mol	Chain	Bond lengths		Bond angles	
		RMSZ	$\# Z  > 5$	RMSZ	$\# Z  > 5$
1	AAA	0.80	3/3638 (0.1%)	0.92	6/4937 (0.1%)

All (3) bond length outliers are listed below:

Mol	Chain	Res	Type	Atoms	Z	Observed(Å)	Ideal(Å)
1	AAA	258[A]	GLU	CD-OE1	8.61	1.35	1.25
1	AAA	258[B]	GLU	CD-OE1	8.61	1.35	1.25
1	AAA	163	GLU	CD-OE2	-5.90	1.19	1.25

All (6) bond angle outliers are listed below:

Mol	Chain	Res	Type	Atoms	Z	Observed(°)	Ideal(°)
1	AAA	131	PHE	CB-CG-CD2	6.00	125.00	120.80
1	AAA	80	ARG	NE-CZ-NH2	-5.09	117.75	120.30
1	AAA	409	TYR	CB-CG-CD2	5.08	124.05	121.00
1	AAA	431	PRO	CA-C-O	-5.06	108.05	120.20
1	AAA	192	ARG	CG-CD-NE	-5.06	101.18	111.80
1	AAA	131	PHE	CB-CG-CD1	-5.02	117.28	120.80

There are no chirality outliers.

There are no planarity outliers.

### 5.2 Too-close contacts

In the following table, the Non-H and H(model) columns list the number of non-hydrogen atoms and hydrogen atoms in the chain respectively. The H(added) column lists the number of hydrogen atoms added and optimized by MolProbity. The Clashes column lists the number of clashes within the asymmetric unit, whereas Symm-Clashes lists symmetry-related clashes.



Mol	Chain	Non-H	H(model)	H(added)	Clashes	Symm-Clashes
1	AAA	3463	3330	3340	33	0
2	AAA	20	0	0	1	0
3	AAA	4	3	3	0	0
4	AAA	20	29	0	0	0
5	AAA	425	0	0	10	0
All	All	3932	3362	3343	33	0

The all-atom clashscore is defined as the number of clashes found per 1000 atoms (including hydrogen atoms). The all-atom clashscore for this structure is 5.

All (33) close contacts within the same asymmetric unit are listed below, sorted by their clash magnitude.

Atom-1	Atom-2	Interatomic distance (Å)	Clash overlap (Å)
1:AAA:313[B]:ARG:HD2	5:AAA:975:HOH:O	0.99	1.14
1:AAA:187[B]:GLU:OE1	5:AAA:703:HOH:O	1.76	1.03
1:AAA:258[A]:GLU:H	1:AAA:315:HIS:HE1	1.08	0.98
1:AAA:258[B]:GLU:H	1:AAA:315:HIS:HE1	1.10	0.95
1:AAA:342[B]:MET:HE2	5:AAA:905:HOH:O	1.70	0.89
1:AAA:258[A]:GLU:H	1:AAA:315:HIS:CE1	1.99	0.80
1:AAA:258[B]:GLU:H	1:AAA:315:HIS:CE1	1.99	0.79
1:AAA:223[B]:THR:HG21	1:AAA:262[B]:VAL:HG21	1.65	0.77
1:AAA:373[B]:TYR:OH	1:AAA:426:ASN:ND2	2.20	0.73
1:AAA:366[A]:GLN:OE1	5:AAA:704:HOH:O	2.06	0.73
1:AAA:246:ASP:OD2	1:AAA:249:HIS:HD2	1.73	0.72
1:AAA:347[A]:GLU:OE1	5:AAA:705:HOH:O	2.07	0.72
1:AAA:313[B]:ARG:CD	5:AAA:975:HOH:O	1.76	0.71
1:AAA:184[A]:LYS:HB3	5:AAA:712:HOH:O	1.94	0.67
1:AAA:223[B]:THR:HG23	1:AAA:228[B]:LYS:HZ2	1.61	0.65
1:AAA:313[B]:ARG:CG	5:AAA:975:HOH:O	2.27	0.64
1:AAA:311:TYR:O	1:AAA:315:HIS:HD2	1.82	0.63
1:AAA:259[A]:MET:HG2	1:AAA:289:TRP:CE2	2.34	0.62
1:AAA:119[B]:GLU:OE1	2:AAA:601:SO4:O1	2.19	0.60
1:AAA:342[B]:MET:CE	5:AAA:905:HOH:O	2.38	0.57
1:AAA:223[B]:THR:CG2	1:AAA:228[B]:LYS:NZ	2.70	0.54
1:AAA:223[B]:THR:HG23	1:AAA:228[B]:LYS:NZ	2.22	0.54
1:AAA:88:SER:OG	1:AAA:90:ILE:HG12	2.08	0.52
1:AAA:184[A]:LYS:HD2	5:AAA:712:HOH:O	2.09	0.52
1:AAA:284[B]:MET:HE1	1:AAA:308:ALA:HB1	1.97	0.47
1:AAA:183[B]:ARG:HH22	1:AAA:237:ALA:HB1	1.80	0.46
1:AAA:204:ASP:O	1:AAA:249:HIS:HE1	2.00	0.45
1:AAA:223[B]:THR:CG2	1:AAA:228[B]:LYS:HZ1	2.31	0.44
1:AAA:246:ASP:OD2	1:AAA:249:HIS:CD2	2.63	0.43

*Continued on next page...*

*Continued from previous page...*

Atom-1	Atom-2	Interatomic distance (Å)	Clash overlap (Å)
1:AAA:391:TRP:CH2	1:AAA:393:GLU:HA	2.56	0.41

There are no symmetry-related clashes.

## 5.3 Torsion angles [i](#)

### 5.3.1 Protein backbone [i](#)

In the following table, the Percentiles column shows the percent Ramachandran outliers of the chain as a percentile score with respect to all X-ray entries followed by that with respect to entries of similar resolution.

The Analysed column shows the number of residues for which the backbone conformation was analysed, and the total number of residues.

Mol	Chain	Analysed	Favoured	Allowed	Outliers	Percentiles	
1	AAA	436/440 (99%)	424 (97%)	12 (3%)	0	100	100

There are no Ramachandran outliers to report.

### 5.3.2 Protein sidechains [i](#)

In the following table, the Percentiles column shows the percent sidechain outliers of the chain as a percentile score with respect to all X-ray entries followed by that with respect to entries of similar resolution.

The Analysed column shows the number of residues for which the sidechain conformation was analysed, and the total number of residues.

Mol	Chain	Analysed	Rotameric	Outliers	Percentiles	
1	AAA	368/368 (100%)	368 (100%)	0	100	100

There are no protein residues with a non-rotameric sidechain to report.

Sometimes sidechains can be flipped to improve hydrogen bonding and reduce clashes. There are no such sidechains identified.

### 5.3.3 RNA [i](#)

There are no RNA molecules in this entry.

## 5.4 Non-standard residues in protein, DNA, RNA chains [i](#)

There are no non-standard protein/DNA/RNA residues in this entry.

## 5.5 Carbohydrates [i](#)

There are no monosaccharides in this entry.

## 5.6 Ligand geometry [i](#)

6 ligands are modelled in this entry.

In the following table, the Counts columns list the number of bonds (or angles) for which Mogul statistics could be retrieved, the number of bonds (or angles) that are observed in the model and the number of bonds (or angles) that are defined in the Chemical Component Dictionary. The Link column lists molecule types, if any, to which the group is linked. The Z score for a bond length (or angle) is the number of standard deviations the observed value is removed from the expected value. A bond length (or angle) with  $|Z| > 2$  is considered an outlier worth inspection. RMSZ is the root-mean-square of all Z scores of the bond lengths (or angles).

Mol	Type	Chain	Res	Link	Bond lengths			Bond angles		
					Counts	RMSZ	$\# Z  > 2$	Counts	RMSZ	$\# Z  > 2$
4	VEE	AAA	606	1	20,20,23	0.78	1 (5%)	24,25,28	1.14	2 (8%)
2	SO4	AAA	603	-	4,4,4	0.25	0	6,6,6	0.36	0
3	ACT	AAA	604	-	1,3,3	10.44	1 (100%)	0,3,3	-	-
2	SO4	AAA	602	-	4,4,4	0.36	0	6,6,6	0.43	0
2	SO4	AAA	601	-	4,4,4	0.38	0	6,6,6	0.32	0
2	SO4	AAA	605	-	4,4,4	0.28	0	6,6,6	0.15	0

In the following table, the Chirals column lists the number of chiral outliers, the number of chiral centers analysed, the number of these observed in the model and the number defined in the Chemical Component Dictionary. Similar counts are reported in the Torsion and Rings columns. '-' means no outliers of that kind were identified.

Mol	Type	Chain	Res	Link	Chirals	Torsions	Rings
4	VEE	AAA	606	1	-	5/11/31/34	0/1/1/1

All (2) bond length outliers are listed below:

Mol	Chain	Res	Type	Atoms	Z	Observed(Å)	Ideal(Å)
3	AAA	604	ACT	CH3-C	10.44	1.62	1.48
4	AAA	606	VEE	C5-C6	2.16	1.59	1.54

All (2) bond angle outliers are listed below:

Mol	Chain	Res	Type	Atoms	Z	Observed(°)	Ideal(°)
4	AAA	606	VEE	C5-C6-N7	3.15	115.34	111.36
4	AAA	606	VEE	C8-C5-C6	2.21	116.30	111.19

There are no chirality outliers.

All (5) torsion outliers are listed below:

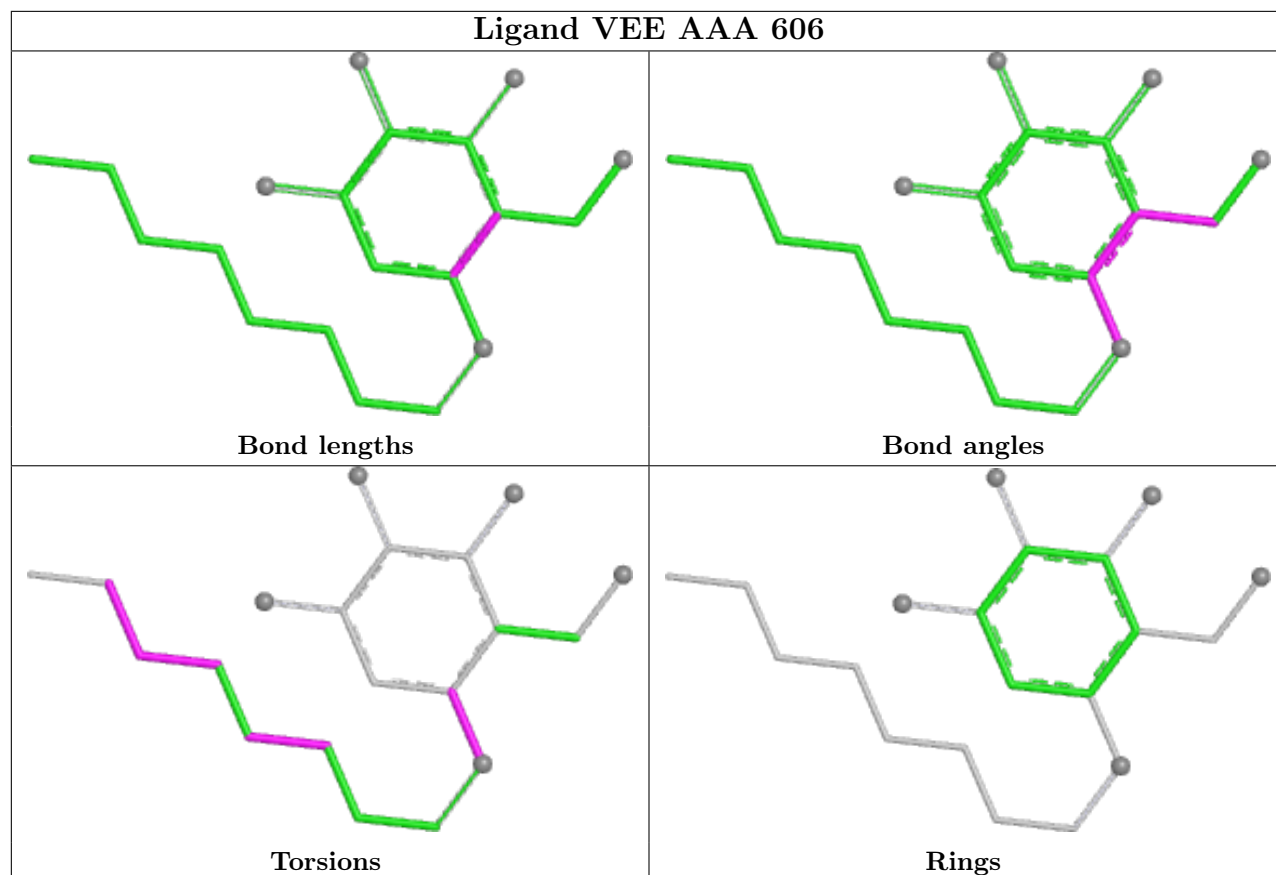
Mol	Chain	Res	Type	Atoms
4	AAA	606	VEE	C17-C18-C19-C20
4	AAA	606	VEE	C1-C6-N7-C14
4	AAA	606	VEE	C5-C6-N7-C14
4	AAA	606	VEE	C15-C16-C17-C18
4	AAA	606	VEE	C18-C19-C20-C21

There are no ring outliers.

1 monomer is involved in 1 short contact:

Mol	Chain	Res	Type	Clashes	Symm-Clashes
2	AAA	601	SO4	1	0

The following is a two-dimensional graphical depiction of Mogul quality analysis of bond lengths, bond angles, torsion angles, and ring geometry for all instances of the Ligand of Interest. In addition, ligands with molecular weight > 250 and outliers as shown on the validation Tables will also be included. For torsion angles, if less than 5% of the Mogul distribution of torsion angles is within 10 degrees of the torsion angle in question, then that torsion angle is considered an outlier. Any bond that is central to one or more torsion angles identified as an outlier by Mogul will be highlighted in the graph. For rings, the root-mean-square deviation (RMSD) between the ring in question and similar rings identified by Mogul is calculated over all ring torsion angles. If the average RMSD is greater than 60 degrees and the minimal RMSD between the ring in question and any Mogul-identified rings is also greater than 60 degrees, then that ring is considered an outlier. The outliers are highlighted in purple. The color gray indicates Mogul did not find sufficient equivalents in the CSD to analyse the geometry.



## 5.7 Other polymers [i](#)

There are no such residues in this entry.

## 5.8 Polymer linkage issues [i](#)

There are no chain breaks in this entry.

## 6 Fit of model and data [i](#)

### 6.1 Protein, DNA and RNA chains [i](#)

In the following table, the column labelled ‘#RSRZ> 2’ contains the number (and percentage) of RSRZ outliers, followed by percent RSRZ outliers for the chain as percentile scores relative to all X-ray entries and entries of similar resolution. The OWAB column contains the minimum, median, 95<sup>th</sup> percentile and maximum values of the occupancy-weighted average B-factor per residue. The column labelled ‘Q< 0.9’ lists the number of (and percentage) of residues with an average occupancy less than 0.9.

Mol	Chain	Analysed	<RSRZ>	#RSRZ>2	OWAB(Å <sup>2</sup> )	Q<0.9
1	AAA	409/440 (92%)	-0.81	2 (0%) 91 91	10, 14, 27, 48	0

All (2) RSRZ outliers are listed below:

Mol	Chain	Res	Type	RSRZ
1	AAA	431	PRO	3.1
1	AAA	247	ALA	2.1

### 6.2 Non-standard residues in protein, DNA, RNA chains [i](#)

There are no non-standard protein/DNA/RNA residues in this entry.

### 6.3 Carbohydrates [i](#)

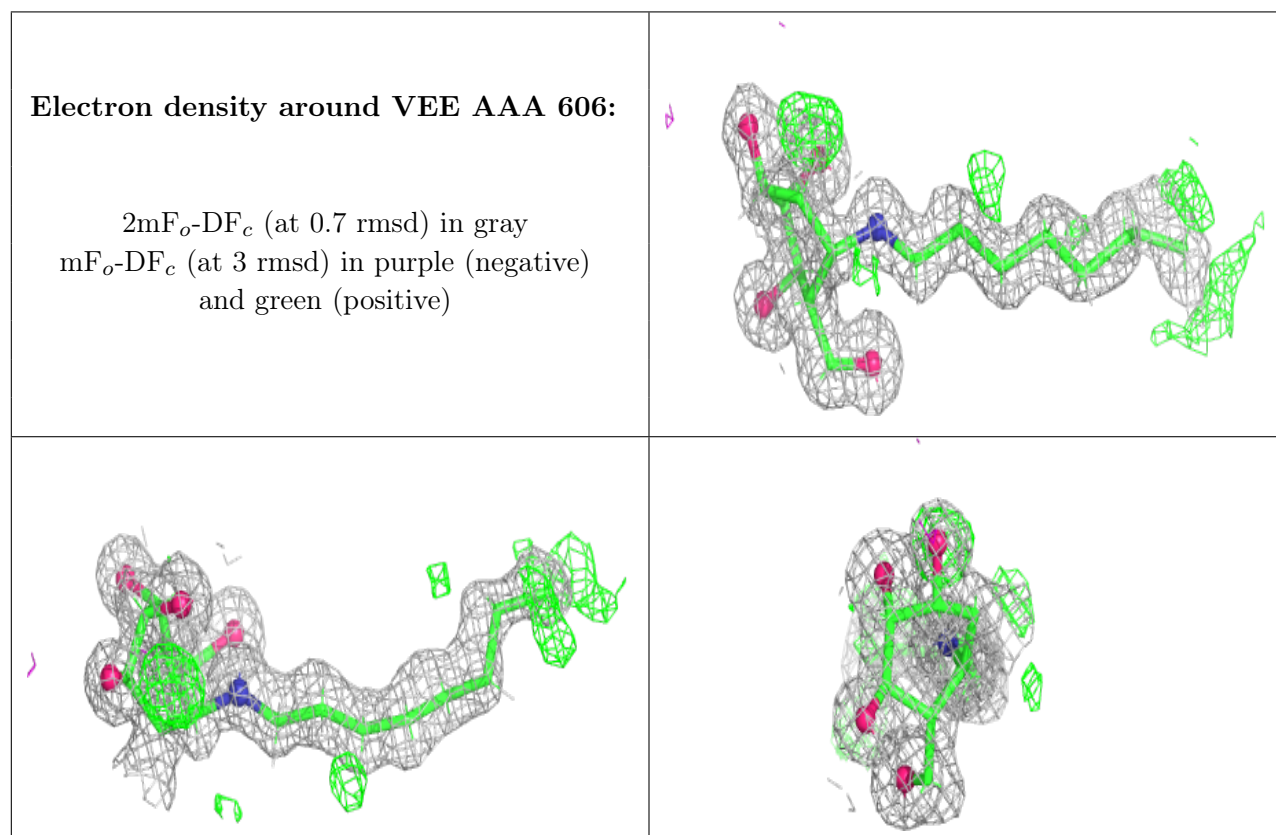
There are no monosaccharides in this entry.

### 6.4 Ligands [i](#)

In the following table, the Atoms column lists the number of modelled atoms in the group and the number defined in the chemical component dictionary. The B-factors column lists the minimum, median, 95<sup>th</sup> percentile and maximum values of B factors of atoms in the group. The column labelled ‘Q< 0.9’ lists the number of atoms with occupancy less than 0.9.

Mol	Type	Chain	Res	Atoms	RSCC	RSR	B-factors(Å <sup>2</sup> )	Q<0.9
2	SO4	AAA	602	5/5	0.94	0.08	16,19,22,26	5
2	SO4	AAA	605	5/5	0.95	0.08	39,42,47,50	5
4	VEE	AAA	606	20/23	0.95	0.09	0,14,38,47	49
3	ACT	AAA	604	4/4	0.98	0.08	15,16,20,21	7
2	SO4	AAA	603	5/5	0.98	0.10	23,28,32,36	5
2	SO4	AAA	601	5/5	0.99	0.05	18,18,21,23	0

The following is a graphical depiction of the model fit to experimental electron density of all instances of the Ligand of Interest. In addition, ligands with molecular weight > 250 and outliers as shown on the geometry validation Tables will also be included. Each fit is shown from different orientation to approximate a three-dimensional view.



## 6.5 Other polymers [i](#)

There are no such residues in this entry.