



# wwPDB X-ray Structure Validation Summary Report ⓘ

May 26, 2020 – 04:13 pm BST

PDB ID : 5OGJ  
Title : Crystal structure of human carbonic anhydrase isozyme XIII with 2-(Cyclooctylamino)-3,5,6-trifluoro-4-[(2-hydroxyethyl)thio]benzenesulfonamide  
Authors : Manakova, E.; Smirnov, A.; Grazulis, S.  
Deposited on : 2017-07-13  
Resolution : 1.06 Å(reported)

This is a wwPDB X-ray Structure Validation Summary Report for a publicly released PDB entry.

We welcome your comments at [validation@mail.wwpdb.org](mailto:validation@mail.wwpdb.org)

A user guide is available at

<https://www.wwpdb.org/validation/2017/XrayValidationReportHelp>

with specific help available everywhere you see the ⓘ symbol.

---

The following versions of software and data (see [references ⓘ](#)) were used in the production of this report:

MolProbity : 4.02b-467  
Mogul : 1.8.5 (274361), CSD as541be (2020)  
Xtriage (Phenix) : 1.13  
EDS : 2.11  
buster-report : 1.1.7 (2018)  
Percentile statistics : 20191225.v01 (using entries in the PDB archive December 25th 2019)  
Refmac : 5.8.0158  
CCP4 : 7.0.044 (Gargrove)  
Ideal geometry (proteins) : Engh & Huber (2001)  
Ideal geometry (DNA, RNA) : Parkinson et al. (1996)  
Validation Pipeline (wwPDB-VP) : 2.11

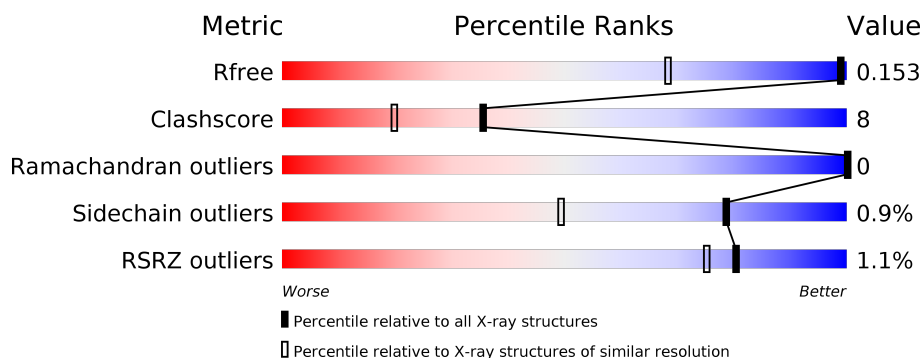
# 1 Overall quality at a glance ⓘ

The following experimental techniques were used to determine the structure:

## *X-RAY DIFFRACTION*

The reported resolution of this entry is 1.06 Å.

Percentile scores (ranging between 0-100) for global validation metrics of the entry are shown in the following graphic. The table shows the number of entries on which the scores are based.



Metric	Whole archive (#Entries)	Similar resolution (#Entries, resolution range(Å))
$R_{free}$	130704	1202 (1.10-1.02)
Clashscore	141614	1252 (1.10-1.02)
Ramachandran outliers	138981	1204 (1.10-1.02)
Sidechain outliers	138945	1202 (1.10-1.02)
RSRZ outliers	127900	1178 (1.10-1.02)

The table below summarises the geometric issues observed across the polymeric chains and their fit to the electron density. The red, orange, yellow and green segments on the lower bar indicate the fraction of residues that contain outliers for  $\geq 3$ , 2, 1 and 0 types of geometric quality criteria respectively. A grey segment represents the fraction of residues that are not modelled. The numeric value for each fraction is indicated below the corresponding segment, with a dot representing fractions  $\leq 5\%$ . The upper red bar (where present) indicates the fraction of residues that have poor fit to the electron density. The numeric value is given above the bar.

Mol	Chain	Length	Quality of chain
1	A	263	<div> <div style="width: 100%; height: 10px; position: relative;"> <div style="position: absolute; top: -10px; left: 0; width: 100%;"></div> <div style="position: absolute; top: 10px; left: 0; width: 100%;"></div> <div style="position: absolute; left: 0; top: 0; width: 100%; height: 100%; background: linear-gradient(to right, red 2%, orange 11%, yellow 88%, green 93%, grey 100%);"></div> <div style="position: absolute; left: 93%; top: 0; width: 5%; height: 100%; background-color: grey;"></div> <div style="position: absolute; left: 2%; top: 0; width: 1%; height: 100%; background-color: red;"></div> <div style="position: absolute; left: 11%; top: 0; width: 1%; height: 100%; background-color: orange;"></div> <div style="position: absolute; left: 88%; top: 0; width: 1%; height: 100%; background-color: yellow;"></div> <div style="position: absolute; left: 93%; top: 0; width: 1%; height: 100%; background-color: green;"></div> </div> <div> <div style="width: 100%; height: 10px; position: relative;"> <div style="position: absolute; top: -10px; left: 0; width: 100%;"></div> <div style="position: absolute; top: 10px; left: 0; width: 100%;"></div> <div style="position: absolute; left: 0; top: 0; width: 100%; height: 100%; background: linear-gradient(to right, red 2%, orange 11%, yellow 88%, green 93%, grey 100%);"></div> <div style="position: absolute; left: 93%; top: 0; width: 5%; height: 100%; background-color: grey;"></div> <div style="position: absolute; left: 2%; top: 0; width: 1%; height: 100%; background-color: red;"></div> <div style="position: absolute; left: 11%; top: 0; width: 1%; height: 100%; background-color: orange;"></div> <div style="position: absolute; left: 88%; top: 0; width: 1%; height: 100%; background-color: yellow;"></div> <div style="position: absolute; left: 93%; top: 0; width: 1%; height: 100%; background-color: green;"></div> </div> <div> <div style="width: 100%; height: 10px; position: relative;"> <div style="position: absolute; top: -10px; left: 0; width: 100%;"></div> <div style="position: absolute; top: 10px; left: 0; width: 100%;"></div> <div style="position: absolute; left: 0; top: 0; width: 100%; height: 100%; background: linear-gradient(to right, red 2%, orange 11%, yellow 88%, green 93%, grey 100%);"></div> <div style="position: absolute; left: 93%; top: 0; width: 5%; height: 100%; background-color: grey;"></div> <div style="position: absolute; left: 2%; top: 0; width: 1%; height: 100%; background-color: red;"></div> <div style="position: absolute; left: 11%; top: 0; width: 1%; height: 100%; background-color: orange;"></div> <div style="position: absolute; left: 88%; top: 0; width: 1%; height: 100%; background-color: yellow;"></div> <div style="position: absolute; left: 93%; top: 0; width: 1%; height: 100%; background-color: green;"></div> </div> </div> </div></div>
1	B	263	<div> <div style="width: 100%; height: 10px; position: relative;"> <div style="position: absolute; top: -10px; left: 0; width: 100%;"></div> <div style="position: absolute; top: 10px; left: 0; width: 100%;"></div> <div style="position: absolute; left: 0; top: 0; width: 100%; height: 100%; background: linear-gradient(to right, red 2%, orange 11%, yellow 88%, green 93%, grey 100%);"></div> <div style="position: absolute; left: 93%; top: 0; width: 5%; height: 100%; background-color: grey;"></div> <div style="position: absolute; left: 2%; top: 0; width: 1%; height: 100%; background-color: red;"></div> <div style="position: absolute; left: 11%; top: 0; width: 1%; height: 100%; background-color: orange;"></div> <div style="position: absolute; left: 88%; top: 0; width: 1%; height: 100%; background-color: yellow;"></div> <div style="position: absolute; left: 93%; top: 0; width: 1%; height: 100%; background-color: green;"></div> </div> <div> <div style="width: 100%; height: 10px; position: relative;"> <div style="position: absolute; top: -10px; left: 0; width: 100%;"></div> <div style="position: absolute; top: 10px; left: 0; width: 100%;"></div> <div style="position: absolute; left: 0; top: 0; width: 100%; height: 100%; background: linear-gradient(to right, red 2%, orange 11%, yellow 88%, green 93%, grey 100%);"></div> <div style="position: absolute; left: 93%; top: 0; width: 5%; height: 100%; background-color: grey;"></div> <div style="position: absolute; left: 2%; top: 0; width: 1%; height: 100%; background-color: red;"></div> <div style="position: absolute; left: 11%; top: 0; width: 1%; height: 100%; background-color: orange;"></div> <div style="position: absolute; left: 88%; top: 0; width: 1%; height: 100%; background-color: yellow;"></div> <div style="position: absolute; left: 93%; top: 0; width: 1%; height: 100%; background-color: green;"></div> </div> <div> <div style="width: 100%; height: 10px; position: relative;"> <div style="position: absolute; top: -10px; left: 0; width: 100%;"></div> <div style="position: absolute; top: 10px; left: 0; width: 100%;"></div> <div style="position: absolute; left: 0; top: 0; width: 100%; height: 100%; background: linear-gradient(to right, red 2%, orange 11%, yellow 88%, green 93%, grey 100%);"></div> <div style="position: absolute; left: 93%; top: 0; width: 5%; height: 100%; background-color: grey;"></div> <div style="position: absolute; left: 2%; top: 0; width: 1%; height: 100%; background-color: red;"></div> <div style="position: absolute; left: 11%; top: 0; width: 1%; height: 100%; background-color: orange;"></div> <div style="position: absolute; left: 88%; top: 0; width: 1%; height: 100%; background-color: yellow;"></div> <div style="position: absolute; left: 93%; top: 0; width: 1%; height: 100%; background-color: green;"></div> </div> </div> </div></div>

The following table lists non-polymeric compounds, carbohydrate monomers and non-standard residues in protein, DNA, RNA chains that are outliers for geometric or electron-density-fit criteria:

Mol	Type	Chain	Res	Chirality	Geometry	Clashes	Electron density
4	PEG	B	304	-	-	X	-
6	EDO	B	306	-	-	X	-

## 2 Entry composition

There are 8 unique types of molecules in this entry. The entry contains 5216 atoms, of which 0 are hydrogens and 0 are deuteriums.

In the tables below, the ZeroOcc column contains the number of atoms modelled with zero occupancy, the AltConf column contains the number of residues with at least one atom in alternate conformation and the Trace column contains the number of residues modelled with at most 2 atoms.

- Molecule 1 is a protein called Carbonic anhydrase 13.

Mol	Chain	Residues	Atoms					ZeroOcc	AltConf	Trace
1	B	263	Total	C	N	O	S	13	18	0
			2236	1422	385	426	3			
1	A	259	Total	C	N	O	S	11	9	0
			2125	1354	366	404	1			

There are 2 discrepancies between the modelled and reference sequences:

Chain	Residue	Modelled	Actual	Comment	Reference
B	1	MET	-	initiating methionine	UNP Q8N1Q1
A	1	MET	-	initiating methionine	UNP Q8N1Q1

- Molecule 2 is ZINC ION (three-letter code: ZN) (formula: Zn).

Mol	Chain	Residues	Atoms		ZeroOcc	AltConf
2	B	1	Total	Zn	0	0
			1	1		
2	A	1	Total	Zn	0	0
			1	1		

- Molecule 3 is CITRIC ACID (three-letter code: CIT) (formula: C<sub>6</sub>H<sub>8</sub>O<sub>7</sub>).



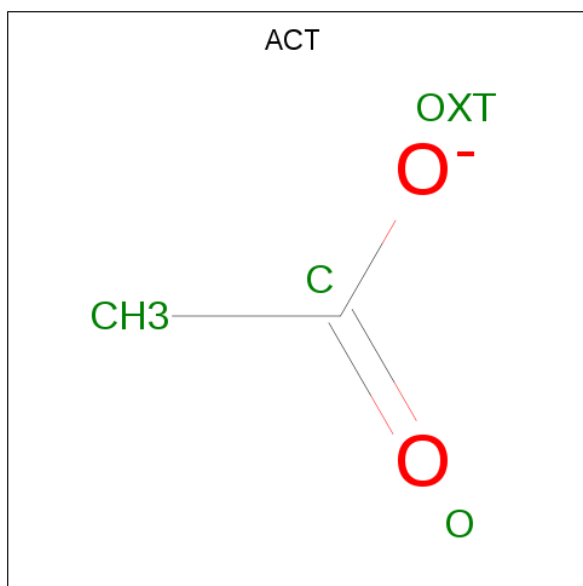
Mol	Chain	Residues	Atoms			ZeroOcc	AltConf
3	B	1	Total	C	O	0	0
			13	6	7		
3	B	1	Total	C	O	0	0
			13	6	7		
3	A	1	Total	C	O	0	0
			13	6	7		
3	A	1	Total	C	O	0	0
			13	6	7		

- Molecule 4 is DI(HYDROXYETHYL)ETHER (three-letter code: PEG) (formula:  $C_4H_{10}O_3$ ).



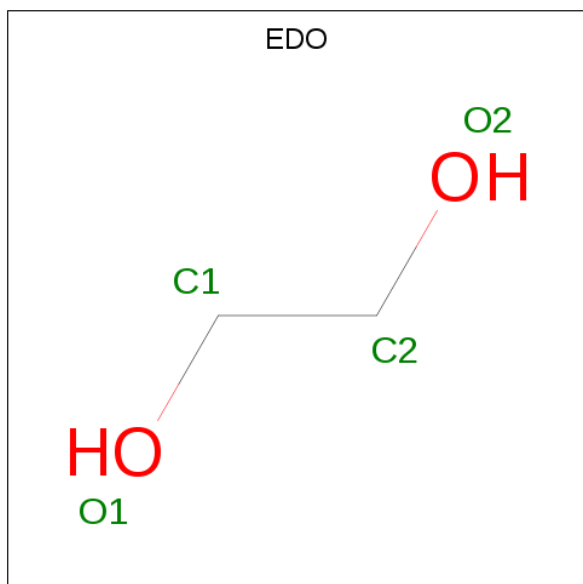
Mol	Chain	Residues	Atoms			ZeroOcc	AltConf
4	B	1	Total	C	O	0	0
			7	4	3		

- Molecule 5 is ACETATE ION (three-letter code: ACT) (formula:  $C_2H_3O_2$ ).



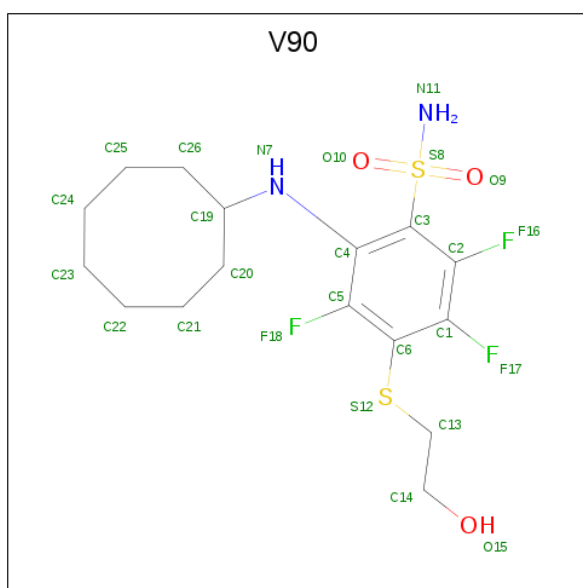
Mol	Chain	Residues	Atoms			ZeroOcc	AltConf
5	B	1	Total	C	O	0	0
			4	2	2		
5	A	1	Total	C	O	0	0
			4	2	2		

- Molecule 6 is 1,2-ETHANEDIOL (three-letter code: EDO) (formula:  $C_2H_6O_2$ ).



Mol	Chain	Residues	Atoms	ZeroOcc	AltConf
6	B	1	Total C O 4 2 2	0	0
6	B	1	Total C O 4 2 2	0	0
6	A	1	Total C O 4 2 2	0	0
6	A	1	Total C O 4 2 2	0	0
6	A	1	Total C O 4 2 2	0	0

- Molecule 7 is 2-(cyclooctylamino)-3,5,6-trifluoro-4-[(2-hydroxyethyl)sulfanyl]benzenesulfonamide (three-letter code: V90) (formula: C<sub>16</sub>H<sub>23</sub>F<sub>3</sub>N<sub>2</sub>O<sub>3</sub>S<sub>2</sub>).



Mol	Chain	Residues	Atoms	ZeroOcc	AltConf
7	B	1	Total C F N O S 26 16 3 2 3 2	0	0
7	A	1	Total C F N O S 26 16 3 2 3 2	0	0

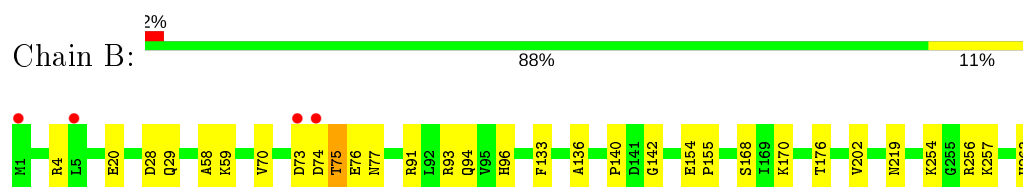
- Molecule 8 is water.

Mol	Chain	Residues	Atoms	ZeroOcc	AltConf
8	B	376	Total O 376 376	0	0
8	A	338	Total O 338 338	0	0

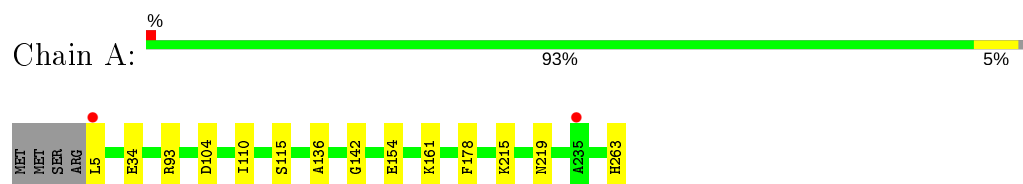
### 3 Residue-property plots [i](#)

These plots are drawn for all protein, RNA and DNA chains in the entry. The first graphic for a chain summarises the proportions of the various outlier classes displayed in the second graphic. The second graphic shows the sequence view annotated by issues in geometry and electron density. Residues are color-coded according to the number of geometric quality criteria for which they contain at least one outlier: green = 0, yellow = 1, orange = 2 and red = 3 or more. A red dot above a residue indicates a poor fit to the electron density ( $RSRZ > 2$ ). Stretches of 2 or more consecutive residues without any outlier are shown as a green connector. Residues present in the sample, but not in the model, are shown in grey.

- Molecule 1: Carbonic anhydrase 13



- Molecule 1: Carbonic anhydrase 13





## 4 Data and refinement statistics

Property	Value	Source
Space group	P 21 21 21	Depositor
Cell constants a, b, c, $\alpha$ , $\beta$ , $\gamma$	56.45Å 57.24Å 159.78Å 90.00° 90.00° 90.00°	Depositor
Resolution (Å)	79.89 – 1.06 79.89 – 1.06	Depositor EDS
% Data completeness (in resolution range)	98.6 (79.89-1.06) 98.6 (79.89-1.06)	Depositor EDS
$R_{merge}$	(Not available)	Depositor
$R_{sym}$	0.04	Depositor
$\langle I/\sigma(I) \rangle$ <sup>1</sup>	1.95 (at 1.06Å)	Xtriage
Refinement program	REFMAC	Depositor
R, $R_{free}$	0.132 , 0.155 0.130 , 0.153	Depositor DCC
$R_{free}$ test set	22703 reflections (9.91%)	wwPDB-VP
Wilson B-factor (Å <sup>2</sup> )	10.0	Xtriage
Anisotropy	0.243	Xtriage
Bulk solvent $k_{sol}$ (e/Å <sup>3</sup> ), $B_{sol}$ (Å <sup>2</sup> )	0.32 , 41.0	EDS
L-test for twinning <sup>2</sup>	$\langle  L  \rangle = 0.48$ , $\langle L^2 \rangle = 0.31$	Xtriage
Estimated twinning fraction	0.018 for k,h,-l	Xtriage
$F_o, F_c$ correlation	0.98	EDS
Total number of atoms	5216	wwPDB-VP
Average B, all atoms (Å <sup>2</sup> )	15.0	wwPDB-VP

Xtriage's analysis on translational NCS is as follows: *The largest off-origin peak in the Patterson function is 5.15% of the height of the origin peak. No significant pseudotranslation is detected.*

<sup>1</sup>Intensities estimated from amplitudes.

<sup>2</sup>Theoretical values of  $\langle |L| \rangle$ ,  $\langle L^2 \rangle$  for acentric reflections are 0.5, 0.333 respectively for untwinned datasets, and 0.375, 0.2 for perfectly twinned datasets.

## 5 Model quality [i](#)

### 5.1 Standard geometry [i](#)

Bond lengths and bond angles in the following residue types are not validated in this section: V90, ZN, CIT, EDO, ACT, PEG

The Z score for a bond length (or angle) is the number of standard deviations the observed value is removed from the expected value. A bond length (or angle) with  $|Z| > 5$  is considered an outlier worth inspection. RMSZ is the root-mean-square of all Z scores of the bond lengths (or angles).

Mol	Chain	Bond lengths		Bond angles	
		RMSZ	$\# Z  > 5$	RMSZ	$\# Z  > 5$
1	A	1.03	0/2188	0.97	0/2977
1	B	1.08	0/2302	1.01	0/3130
All	All	1.06	0/4490	0.99	0/6107

Chiral center outliers are detected by calculating the chiral volume of a chiral center and verifying if the center is modelled as a planar moiety or with the opposite hand. A planarity outlier is detected by checking planarity of atoms in a peptide group, atoms in a mainchain group or atoms of a sidechain that are expected to be planar.

Mol	Chain	#Chirality outliers	#Planarity outliers
1	B	1	0

There are no bond length outliers.

There are no bond angle outliers.

All (1) chirality outliers are listed below:

Mol	Chain	Res	Type	Atom
1	B	74[B]	ASP	CA

There are no planarity outliers.

### 5.2 Too-close contacts [i](#)

In the following table, the Non-H and H(model) columns list the number of non-hydrogen atoms and hydrogen atoms in the chain respectively. The H(added) column lists the number of hydrogen atoms added and optimized by MolProbity. The Clashes column lists the number of clashes within the asymmetric unit, whereas Symm-Clashes lists symmetry related clashes.

Mol	Chain	Non-H	H(model)	H(added)	Clashes	Symm-Clashes
1	A	2125	0	2053	14	2
1	B	2236	0	2156	44	0
2	A	1	0	0	0	0
2	B	1	0	0	0	0
3	A	26	0	10	2	0
3	B	26	0	10	4	0
4	B	7	0	9	5	0
5	A	4	0	3	0	0
5	B	4	0	3	0	0
6	A	12	0	18	2	0
6	B	8	0	10	8	0
7	A	26	0	22	5	0
7	B	26	0	22	8	0
8	A	338	0	0	5	0
8	B	376	0	0	21	1
All	All	5216	0	4316	71	2

The all-atom clashscore is defined as the number of clashes found per 1000 atoms (including hydrogen atoms). The all-atom clashscore for this structure is 8.

The worst 5 of 71 close contacts within the same asymmetric unit are listed below, sorted by their clash magnitude.

Atom-1	Atom-2	Interatomic distance (Å)	Clash overlap (Å)
1:A:154:GLU:HG3	8:A:665:HOH:O	1.53	1.08
1:B:256:ARG:HG3	4:B:304:PEG:H42	1.36	1.05
1:B:256:ARG:HA	6:B:306:EDO:H12	1.37	1.03
1:B:170:LYS:HE3	8:B:485:HOH:O	1.65	0.96
1:B:93:ARG:HH21	7:B:308:V90:H7	0.94	0.93

All (2) symmetry-related close contacts are listed below. The label for Atom-2 includes the symmetry operator and encoded unit-cell translations to be applied.

Atom-1	Atom-2	Interatomic distance (Å)	Clash overlap (Å)
1:A:34[A]:GLU:CG	1:A:154:GLU:OE1[4_545]	1.94	0.26
1:A:104:ASP:OD1	8:B:633:HOH:O[4_545]	2.16	0.04

## 5.3 Torsion angles

### 5.3.1 Protein backbone

In the following table, the Percentiles column shows the percent Ramachandran outliers of the chain as a percentile score with respect to all X-ray entries followed by that with respect to entries of similar resolution.

The Analysed column shows the number of residues for which the backbone conformation was analysed, and the total number of residues.

Mol	Chain	Analysed	Favoured	Allowed	Outliers	Percentiles	
1	A	266/263 (101%)	259 (97%)	7 (3%)	0	100	100
1	B	279/263 (106%)	273 (98%)	6 (2%)	0	100	100
All	All	545/526 (104%)	532 (98%)	13 (2%)	0	100	100

There are no Ramachandran outliers to report.

### 5.3.2 Protein sidechains

In the following table, the Percentiles column shows the percent sidechain outliers of the chain as a percentile score with respect to all X-ray entries followed by that with respect to entries of similar resolution.

The Analysed column shows the number of residues for which the sidechain conformation was analysed, and the total number of residues.

Mol	Chain	Analysed	Rotameric	Outliers	Percentiles	
1	A	237/232 (102%)	236 (100%)	1 (0%)	91	73
1	B	250/232 (108%)	246 (98%)	4 (2%)	62	24
All	All	487/464 (105%)	482 (99%)	5 (1%)	78	44

All (5) residues with a non-rotameric sidechain are listed below:

Mol	Chain	Res	Type
1	B	4	ARG
1	B	75[A]	THR
1	B	75[B]	THR
1	B	263	HIS
1	A	263	HIS

Some sidechains can be flipped to improve hydrogen bonding and reduce clashes. There are no such sidechains identified.

### 5.3.3 RNA ⓘ

There are no RNA molecules in this entry.

## 5.4 Non-standard residues in protein, DNA, RNA chains ⓘ

There are no non-standard protein/DNA/RNA residues in this entry.

## 5.5 Carbohydrates ⓘ

There are no carbohydrates in this entry.

## 5.6 Ligand geometry ⓘ

Of 16 ligands modelled in this entry, 2 are monoatomic - leaving 14 for Mogul analysis.

In the following table, the Counts columns list the number of bonds (or angles) for which Mogul statistics could be retrieved, the number of bonds (or angles) that are observed in the model and the number of bonds (or angles) that are defined in the Chemical Component Dictionary. The Link column lists molecule types, if any, to which the group is linked. The Z score for a bond length (or angle) is the number of standard deviations the observed value is removed from the expected value. A bond length (or angle) with  $|Z| > 2$  is considered an outlier worth inspection. RMSZ is the root-mean-square of all Z scores of the bond lengths (or angles).

Mol	Type	Chain	Res	Link	Bond lengths			Bond angles		
					Counts	RMSZ	# Z  > 2	Counts	RMSZ	# Z  > 2
3	CIT	A	305	-	3,12,12	1.87	1 (33%)	3,17,17	7.54	3 (100%)
6	EDO	A	306	-	3,3,3	0.34	0	2,2,2	1.33	0
5	ACT	B	305	2	1,3,3	0.05	0	0,3,3	0.00	-
3	CIT	B	302	-	3,12,12	1.66	1 (33%)	3,17,17	1.40	0
3	CIT	A	302	-	3,12,12	1.92	1 (33%)	3,17,17	3.31	1 (33%)
6	EDO	A	303	-	3,3,3	0.68	0	2,2,2	0.94	0
7	V90	A	308	-	26,27,27	2.25	8 (30%)	32,38,38	2.02	6 (18%)
3	CIT	B	303	-	3,12,12	1.97	1 (33%)	3,17,17	3.64	3 (100%)
4	PEG	B	304	-	6,6,6	0.86	0	5,5,5	5.77	4 (80%)
5	ACT	A	307	2	1,3,3	1.87	0	0,3,3	0.00	-
6	EDO	A	304	-	3,3,3	0.25	0	2,2,2	0.85	0
7	V90	B	308	-	26,27,27	2.38	11 (42%)	32,38,38	2.27	10 (31%)
6	EDO	B	307	-	3,3,3	0.80	0	2,2,2	0.46	0
6	EDO	B	306	-	3,3,3	0.87	0	2,2,2	0.55	0

In the following table, the Chirals column lists the number of chiral outliers, the number of chiral

centers analysed, the number of these observed in the model and the number defined in the Chemical Component Dictionary. Similar counts are reported in the Torsion and Rings columns. '-' means no outliers of that kind were identified.

Mol	Type	Chain	Res	Link	Chirals	Torsions	Rings
3	CIT	A	305	-	-	4/6/16/16	-
6	EDO	A	306	-	-	1/1/1/1	-
3	CIT	B	302	-	-	0/6/16/16	-
3	CIT	A	302	-	-	0/6/16/16	-
6	EDO	A	303	-	-	1/1/1/1	-
7	V90	A	308	-	-	5/14/24/24	0/2/2/2
3	CIT	B	303	-	-	5/6/16/16	-
4	PEG	B	304	-	-	1/4/4/4	-
6	EDO	A	304	-	-	1/1/1/1	-
7	V90	B	308	-	-	7/14/24/24	0/2/2/2
6	EDO	B	307	-	-	0/1/1/1	-
6	EDO	B	306	-	-	1/1/1/1	-

The worst 5 of 23 bond length outliers are listed below:

Mol	Chain	Res	Type	Atoms	Z	Observed(Å)	Ideal(Å)
7	A	308	V90	S8-N11	-7.49	1.45	1.60
7	B	308	V90	O9-S8	6.36	1.55	1.43
7	A	308	V90	O10-S8	5.16	1.53	1.43
7	B	308	V90	C2-C3	4.30	1.46	1.39
7	B	308	V90	C26-C19	4.29	1.58	1.52

The worst 5 of 27 bond angle outliers are listed below:

Mol	Chain	Res	Type	Atoms	Z	Observed(°)	Ideal(°)
3	A	305	CIT	C3-C4-C5	10.25	131.39	114.98
4	B	304	PEG	C3-O2-C2	10.20	157.48	113.29
3	A	305	CIT	C3-C2-C1	-6.92	103.90	114.98
7	A	308	V90	O9-S8-O10	-6.63	107.86	118.76
4	B	304	PEG	O1-C1-C2	6.04	146.82	111.81

There are no chirality outliers.

5 of 26 torsion outliers are listed below:

Mol	Chain	Res	Type	Atoms
7	A	308	V90	C14-C13-S12-C6
7	A	308	V90	C2-C3-S8-O10
3	B	303	CIT	C1-C2-C3-O7

*Continued on next page...*

*Continued from previous page...*

Mol	Chain	Res	Type	Atoms
3	B	303	CIT	C1-C2-C3-C6
3	B	303	CIT	C6-C3-C4-C5

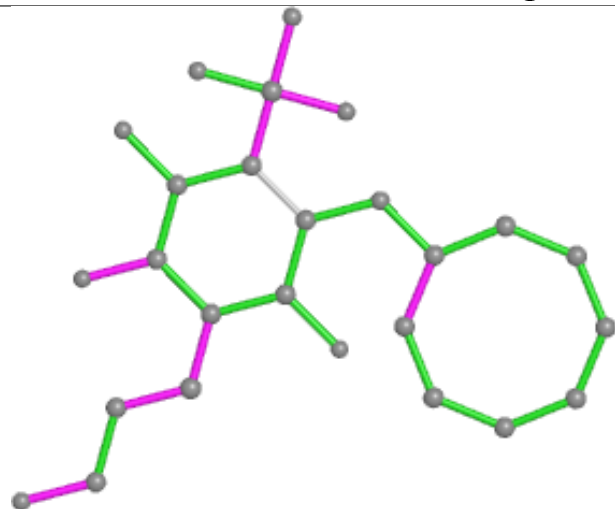
There are no ring outliers.

7 monomers are involved in 34 short contacts:

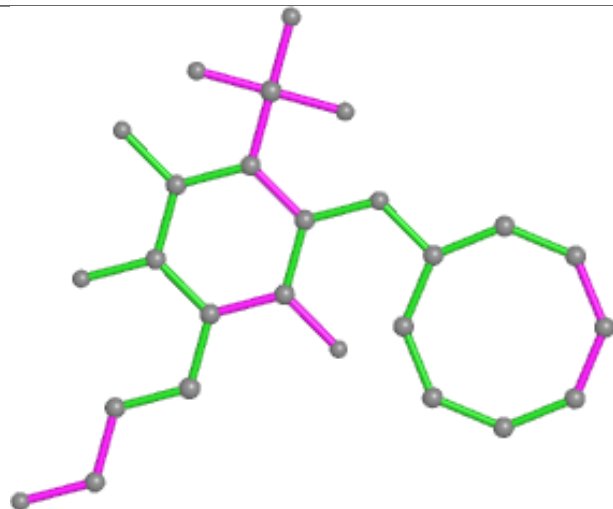
Mol	Chain	Res	Type	Clashes	Symm-Clashes
6	A	306	EDO	2	0
3	A	302	CIT	2	0
7	A	308	V90	5	0
3	B	303	CIT	4	0
4	B	304	PEG	5	0
7	B	308	V90	8	0
6	B	306	EDO	8	0

The following is a two-dimensional graphical depiction of Mogul quality analysis of bond lengths, bond angles, torsion angles, and ring geometry for all instances of the Ligand of Interest. In addition, ligands with molecular weight > 250 and outliers as shown on the validation Tables will also be included. For torsion angles, if less than 5% of the Mogul distribution of torsion angles is within 10 degrees of the torsion angle in question, then that torsion angle is considered an outlier. Any bond that is central to one or more torsion angles identified as an outlier by Mogul will be highlighted in the graph. For rings, the root-mean-square deviation (RMSD) between the ring in question and similar rings identified by Mogul is calculated over all ring torsion angles. If the average RMSD is greater than 60 degrees and the minimal RMSD between the ring in question and any Mogul-identified rings is also greater than 60 degrees, then that ring is considered an outlier. The outliers are highlighted in purple. The color gray indicates Mogul did not find sufficient equivalents in the CSD to analyse the geometry.

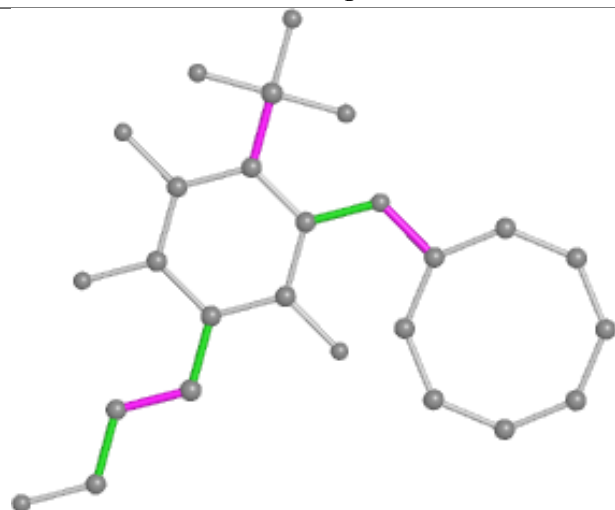
## Ligand V90 A 308



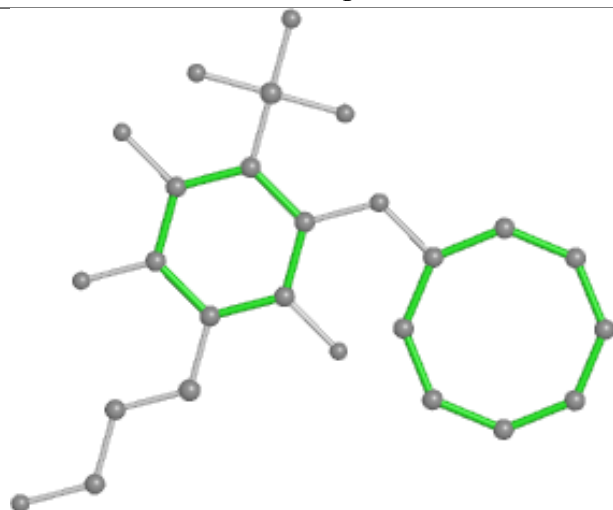
Bond lengths



Bond angles

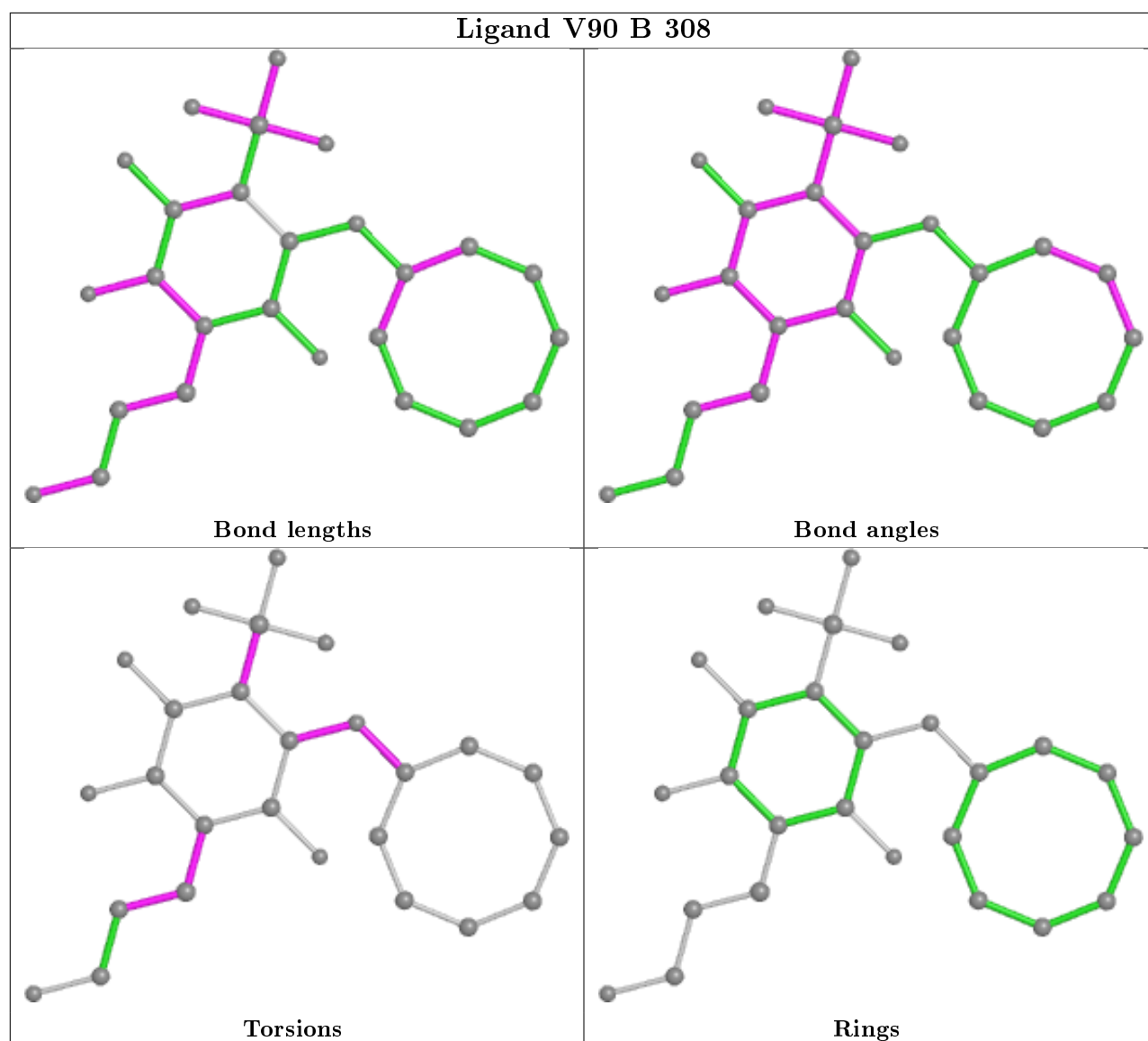


Torsions



Rings





## 5.7 Other polymers [i](#)

There are no such residues in this entry.

## 5.8 Polymer linkage issues [i](#)

There are no chain breaks in this entry.

## 6 Fit of model and data [i](#)

### 6.1 Protein, DNA and RNA chains [i](#)

In the following table, the column labelled ‘#RSRZ> 2’ contains the number (and percentage) of RSRZ outliers, followed by percent RSRZ outliers for the chain as percentile scores relative to all X-ray entries and entries of similar resolution. The OWAB column contains the minimum, median, 95<sup>th</sup> percentile and maximum values of the occupancy-weighted average B-factor per residue. The column labelled ‘Q< 0.9’ lists the number of (and percentage) of residues with an average occupancy less than 0.9.

Mol	Chain	Analysed	<RSRZ>	#RSRZ>2	OWAB(Å <sup>2</sup> )	Q<0.9
1	A	259/263 (98%)	-0.38	2 (0%) 86 82	6, 11, 27, 66	4 (1%)
1	B	263/263 (100%)	-0.30	4 (1%) 73 67	6, 11, 23, 58	4 (1%)
All	All	522/526 (99%)	-0.34	6 (1%) 80 75	6, 11, 26, 66	8 (1%)

The worst 5 of 6 RSRZ outliers are listed below:

Mol	Chain	Res	Type	RSRZ
1	A	5	LEU	4.5
1	B	1	MET	2.4
1	B	5	LEU	2.2
1	B	73[A]	ASP	2.1
1	B	74[A]	ASP	2.1

### 6.2 Non-standard residues in protein, DNA, RNA chains [i](#)

There are no non-standard protein/DNA/RNA residues in this entry.

### 6.3 Carbohydrates [i](#)

There are no carbohydrates in this entry.

### 6.4 Ligands [i](#)

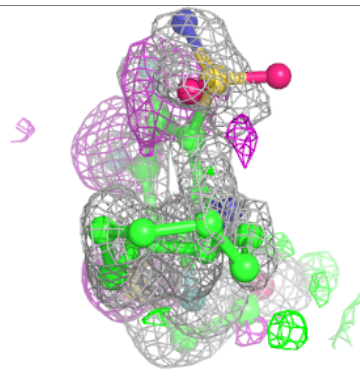
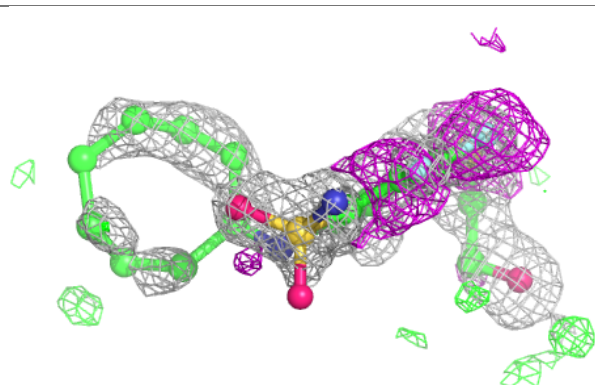
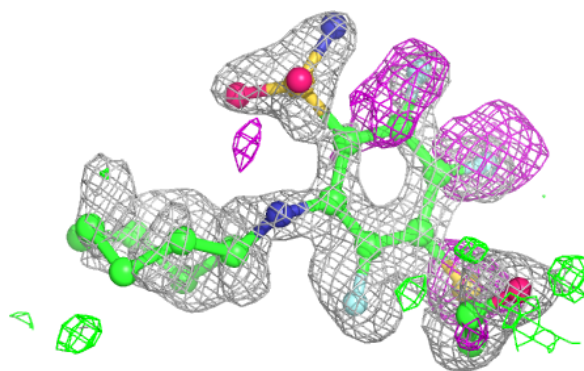
In the following table, the Atoms column lists the number of modelled atoms in the group and the number defined in the chemical component dictionary. The B-factors column lists the minimum, median, 95<sup>th</sup> percentile and maximum values of B factors of atoms in the group. The column labelled ‘Q< 0.9’ lists the number of atoms with occupancy less than 0.9.

Mol	Type	Chain	Res	Atoms	RSCC	RSR	B-factors( $\text{\AA}^2$ )	Q<0.9
6	EDO	B	307	4/4	0.81	0.42	23,25,27,29	0
7	V90	B	308	26/26	0.83	0.23	20,39,59,122	0
6	EDO	A	303	4/4	0.84	0.15	22,23,28,30	0
3	CIT	A	302	13/13	0.90	0.18	28,40,73,78	0
6	EDO	A	304	4/4	0.92	0.28	21,30,36,37	0
3	CIT	B	303	13/13	0.93	0.20	22,33,43,97	0
3	CIT	A	305	13/13	0.93	0.21	17,29,55,68	0
4	PEG	B	304	7/7	0.94	0.22	15,19,24,26	0
6	EDO	A	306	4/4	0.94	0.20	20,23,25,30	0
3	CIT	B	302	13/13	0.95	0.15	14,19,28,30	0
6	EDO	B	306	4/4	0.95	0.36	20,21,22,27	0
7	V90	A	308	26/26	0.96	0.15	13,17,34,36	0
5	ACT	B	305	4/4	0.99	0.06	8,9,9,10	0
5	ACT	A	307	4/4	0.99	0.05	9,9,10,10	0
2	ZN	B	301	1/1	1.00	0.03	6,6,6,6	0
2	ZN	A	301	1/1	1.00	0.03	7,7,7,7	0

The following is a graphical depiction of the model fit to experimental electron density of all instances of the Ligand of Interest. In addition, ligands with molecular weight > 250 and outliers as shown on the geometry validation Tables will also be included. Each fit is shown from different orientation to approximate a three-dimensional view.

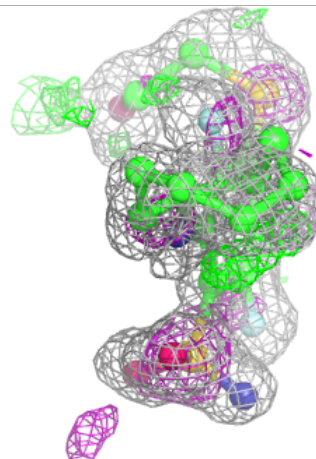
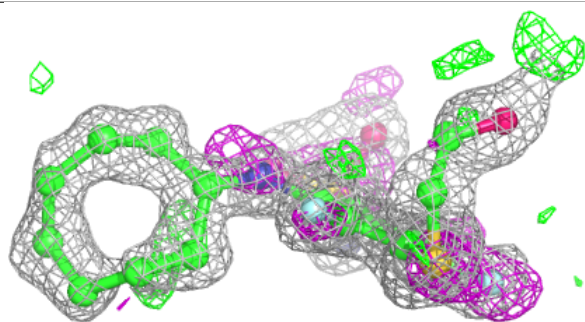
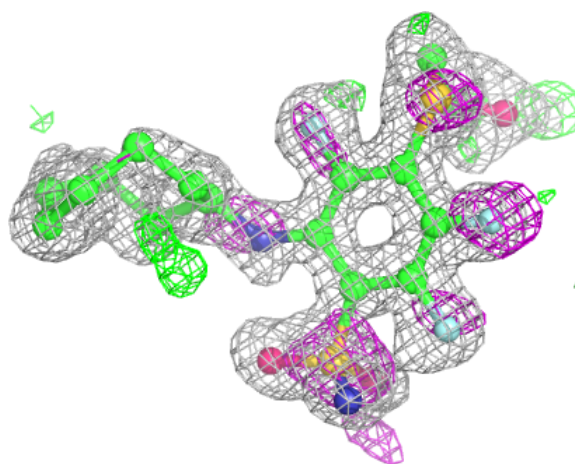
**Electron density around V90 B 308:**

2mF<sub>o</sub>-DF<sub>c</sub> (at 0.7 rmsd) in gray  
mF<sub>o</sub>-DF<sub>c</sub> (at 3 rmsd) in purple (negative)  
and green (positive)



**Electron density around V90 A 308:**

$2mF_o-DF_c$  (at 0.7 rmsd) in gray  
 $mF_o-DF_c$  (at 3 rmsd) in purple (negative)  
and green (positive)



## 6.5 Other polymers [i](#)

There are no such residues in this entry.