



wwPDB EM Validation Summary Report ⓘ

Nov 7, 2022 – 09:19 PM EST

PDB ID : 6OG3
EMDB ID : EMD-20051
Title : Focus classification structure of the hyperactive ClpB mutant K476C, bound to casein, NTD-trimer
Authors : Rizo, A.R.; Lin, J.-B.; Gates, S.N.; Tse, E.; Bart, S.M.; Castellano, L.M.; Dimaio, F.; Shorter, J.; Southworth, D.R.
Deposited on : 2019-04-01
Resolution : 4.10 Å (reported)
Based on initial model : 1KHY

This is a wwPDB EM Validation Summary Report for a publicly released PDB entry.

We welcome your comments at validation@mail.wwpdb.org

A user guide is available at

<https://www.wwpdb.org/validation/2017/EMValidationReportHelp>

with specific help available everywhere you see the ⓘ symbol.

The types of validation reports are described at

<http://www.wwpdb.org/validation/2017/FAQs#types>.

The following versions of software and data (see [references ⓘ](#)) were used in the production of this report:

EMDB validation analysis : 0.0.1.dev43
MolProbity : 4.02b-467
Percentile statistics : 20191225.v01 (using entries in the PDB archive December 25th 2019)
MapQ : 1.9.9
Ideal geometry (proteins) : Engh & Huber (2001)
Ideal geometry (DNA, RNA) : Parkinson et al. (1996)
Validation Pipeline (wwPDB-VP) : 2.31.2

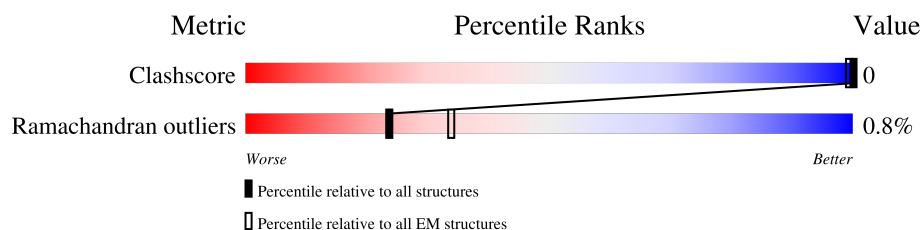
1 Overall quality at a glance

The following experimental techniques were used to determine the structure:

ELECTRON MICROSCOPY




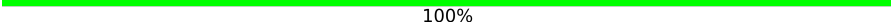
The reported resolution of this entry is 4.10 Å.

Percentile scores (ranging between 0-100) for global validation metrics of the entry are shown in the following graphic. The table shows the number of entries on which the scores are based.



Metric	Whole archive (#Entries)	EM structures (#Entries)
Clashscore	158937	4297
Ramachandran outliers	154571	4023

The table below summarises the geometric issues observed across the polymeric chains and their fit to the map. The red, orange, yellow and green segments of the bar indicate the fraction of residues that contain outliers for ≥ 3 , 2, 1 and 0 types of geometric quality criteria respectively. A grey segment represents the fraction of residues that are not modelled. The numeric value for each fraction is indicated below the corresponding segment, with a dot representing fractions $\leq 5\%$. The upper red bar (where present) indicates the fraction of residues that have poor fit to the EM map (all-atom inclusion $< 40\%$). The numeric value is given above the bar.

Mol	Chain	Length	Quality of chain
1	A	867	 15% 85%
1	C	867	 15% 85%
1	E	867	 15% 85%
2	P	9	 33% 100%

2 Entry composition

There are 2 unique types of molecules in this entry. The entry contains 1215 atoms, of which 0 are hydrogens and 0 are deuteriums.

In the tables below, the AltConf column contains the number of residues with at least one atom in alternate conformation and the Trace column contains the number of residues modelled with at most 2 atoms.

- Molecule 1 is a protein called Hyperactive disaggregase ClpB.

Mol	Chain	Residues	Atoms			AltConf	Trace
1	E	132	Total 396	C 264	N 132	0	0
1	C	132	Total 396	C 264	N 132	0	0
1	A	132	Total 396	C 264	N 132	0	0

There are 42 discrepancies between the modelled and reference sequences:

Chain	Residue	Modelled	Actual	Comment	Reference
E	96	ASN	LYS	conflict	UNP P63284
E	97	VAL	LEU	conflict	UNP P63284
E	122	VAL	LEU	conflict	UNP P63284
E	476	CYS	LYS	engineered mutation	UNP P63284
E	858	ARG	-	expression tag	UNP P63284
E	859	SER	-	expression tag	UNP P63284
E	860	ARG	-	expression tag	UNP P63284
E	861	SER	-	expression tag	UNP P63284
E	862	HIS	-	expression tag	UNP P63284
E	863	HIS	-	expression tag	UNP P63284
E	864	HIS	-	expression tag	UNP P63284
E	865	HIS	-	expression tag	UNP P63284
E	866	HIS	-	expression tag	UNP P63284
E	867	HIS	-	expression tag	UNP P63284
C	96	ASN	LYS	conflict	UNP P63284
C	97	VAL	LEU	conflict	UNP P63284
C	122	VAL	LEU	conflict	UNP P63284
C	476	CYS	LYS	engineered mutation	UNP P63284
C	858	ARG	-	expression tag	UNP P63284
C	859	SER	-	expression tag	UNP P63284
C	860	ARG	-	expression tag	UNP P63284
C	861	SER	-	expression tag	UNP P63284
C	862	HIS	-	expression tag	UNP P63284
C	863	HIS	-	expression tag	UNP P63284

Continued on next page...

Continued from previous page...

Chain	Residue	Modelled	Actual	Comment	Reference
C	864	HIS	-	expression tag	UNP P63284
C	865	HIS	-	expression tag	UNP P63284
C	866	HIS	-	expression tag	UNP P63284
C	867	HIS	-	expression tag	UNP P63284
A	96	ASN	LYS	conflict	UNP P63284
A	97	VAL	LEU	conflict	UNP P63284
A	122	VAL	LEU	conflict	UNP P63284
A	476	CYS	LYS	engineered mutation	UNP P63284
A	858	ARG	-	expression tag	UNP P63284
A	859	SER	-	expression tag	UNP P63284
A	860	ARG	-	expression tag	UNP P63284
A	861	SER	-	expression tag	UNP P63284
A	862	HIS	-	expression tag	UNP P63284
A	863	HIS	-	expression tag	UNP P63284
A	864	HIS	-	expression tag	UNP P63284
A	865	HIS	-	expression tag	UNP P63284
A	866	HIS	-	expression tag	UNP P63284
A	867	HIS	-	expression tag	UNP P63284

- Molecule 2 is a protein called Alpha S1-casein.

Mol	Chain	Residues	Atoms			AltConf	Trace
2	P	9	Total	C	N	0	0
			27	18	9		

85%



85%



4 Experimental information

Property	Value	Source
EM reconstruction method	SINGLE PARTICLE	Depositor
Imposed symmetry	POINT, C1	Depositor
Number of particles used	93588	Depositor
Resolution determination method	FSC 0.143 CUT-OFF	Depositor
CTF correction method	PHASE FLIPPING AND AMPLITUDE CORRECTION	Depositor
Microscope	FEI TITAN KRIOS	Depositor
Voltage (kV)	300	Depositor
Electron dose ($e^-/\text{\AA}^2$)	56	Depositor
Minimum defocus (nm)	Not provided	
Maximum defocus (nm)	Not provided	
Magnification	Not provided	
Image detector	GATAN K2 SUMMIT (4k x 4k)	Depositor
Maximum map value	0.069	Depositor
Minimum map value	-0.027	Depositor
Average map value	0.000	Depositor
Map value standard deviation	0.001	Depositor
Recommended contour level	0.0117	Depositor
Map size (Å)	264.192, 264.192, 264.192	wwPDB
Map dimensions	256, 256, 256	wwPDB
Map angles (°)	90.0, 90.0, 90.0	wwPDB
Pixel spacing (Å)	1.032, 1.032, 1.032	Depositor

5 Model quality [i](#)

5.1 Standard geometry [i](#)

The Z score for a bond length (or angle) is the number of standard deviations the observed value is removed from the expected value. A bond length (or angle) with $|Z| > 5$ is considered an outlier worth inspection. RMSZ is the root-mean-square of all Z scores of the bond lengths (or angles).

Mol	Chain	Bond lengths		Bond angles	
		RMSZ	$\# Z > 5$	RMSZ	$\# Z > 5$
1	A	0.25	0/394	0.59	0/392
1	C	0.25	0/394	0.59	0/392
1	E	0.25	0/394	0.59	0/392
All	All	0.25	0/1182	0.59	0/1176

There are no bond length outliers.

There are no bond angle outliers.

There are no chirality outliers.

There are no planarity outliers.

5.2 Too-close contacts [i](#)

In the following table, the Non-H and H(model) columns list the number of non-hydrogen atoms and hydrogen atoms in the chain respectively. The H(added) column lists the number of hydrogen atoms added and optimized by MolProbity. The Clashes column lists the number of clashes within the asymmetric unit, whereas Symm-Clashes lists symmetry-related clashes.

Mol	Chain	Non-H	H(model)	H(added)	Clashes	Symm-Clashes
1	A	396	0	142	0	0
1	C	396	0	142	0	0
1	E	396	0	142	0	0
2	P	27	0	3	0	0
All	All	1215	0	429	0	0

The all-atom clashscore is defined as the number of clashes found per 1000 atoms (including hydrogen atoms). The all-atom clashscore for this structure is 0.

There are no clashes within the asymmetric unit.

There are no symmetry-related clashes.

5.3 Torsion angles [i](#)

5.3.1 Protein backbone [i](#)

In the following table, the Percentiles column shows the percent Ramachandran outliers of the chain as a percentile score with respect to all PDB entries followed by that with respect to all EM entries.

The Analysed column shows the number of residues for which the backbone conformation was analysed, and the total number of residues.

Mol	Chain	Analysed	Favoured	Allowed	Outliers	Percentiles	
1	A	128/867 (15%)	127 (99%)	0	1 (1%)	19	58
1	C	128/867 (15%)	127 (99%)	0	1 (1%)	19	58
1	E	128/867 (15%)	127 (99%)	0	1 (1%)	19	58
All	All	384/2601 (15%)	381 (99%)	0	3 (1%)	24	58

All (3) Ramachandran outliers are listed below:

Mol	Chain	Res	Type
1	E	119	ARG
1	C	119	ARG
1	A	119	ARG

5.3.2 Protein sidechains [i](#)

There are no protein residues with a non-rotameric sidechain to report in this entry.

5.3.3 RNA [i](#)

There are no RNA molecules in this entry.

5.4 Non-standard residues in protein, DNA, RNA chains [i](#)

There are no non-standard protein/DNA/RNA residues in this entry.

5.5 Carbohydrates [i](#)

There are no monosaccharides in this entry.

5.6 Ligand geometry [i](#)

There are no ligands in this entry.

5.7 Other polymers [i](#)

There are no such residues in this entry.

5.8 Polymer linkage issues [i](#)

There are no chain breaks in this entry.

6 Map visualisation [i](#)

This section contains visualisations of the EMDB entry EMD-20051. These allow visual inspection of the internal detail of the map and identification of artifacts.

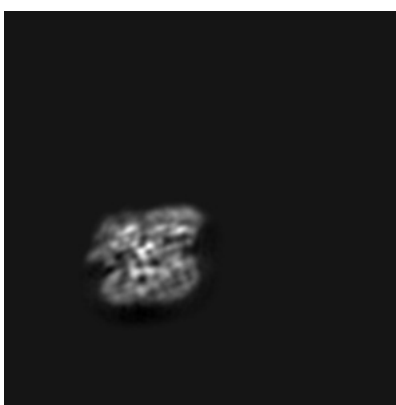
No raw map or half-maps were deposited for this entry and therefore no images, graphs, etc. pertaining to the raw map can be shown.

6.1 Orthogonal projections [i](#)

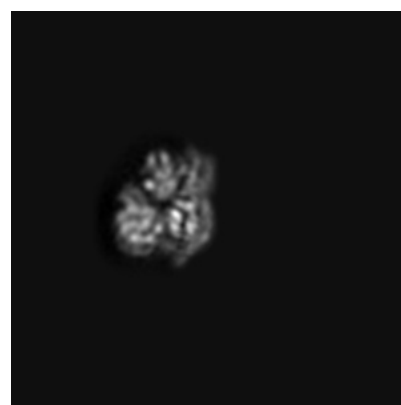
6.1.1 Primary map



X



Y

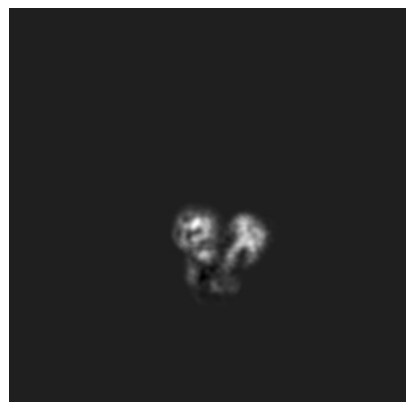


Z

The images above show the map projected in three orthogonal directions.

6.2 Central slices [i](#)

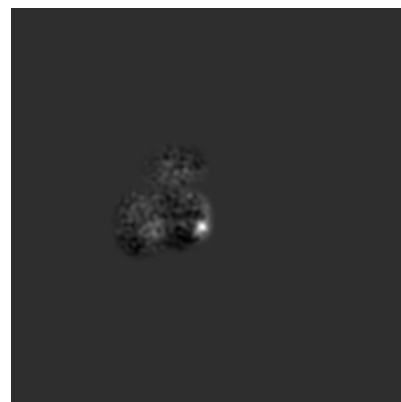
6.2.1 Primary map



X Index: 128



Y Index: 128



Z Index: 128

The images above show central slices of the map in three orthogonal directions.

6.3 Largest variance slices [i](#)

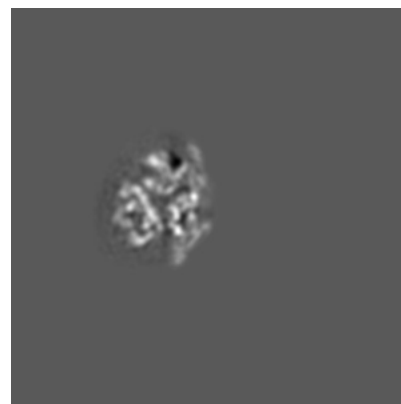
6.3.1 Primary map



X Index: 105



Y Index: 117

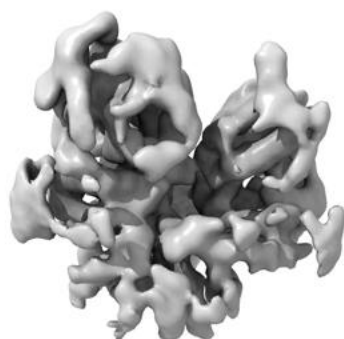


Z Index: 82

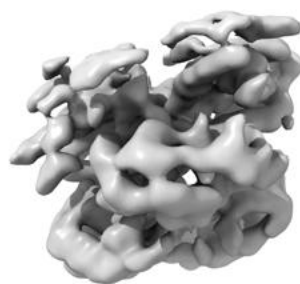
The images above show the largest variance slices of the map in three orthogonal directions.

6.4 Orthogonal surface views [i](#)

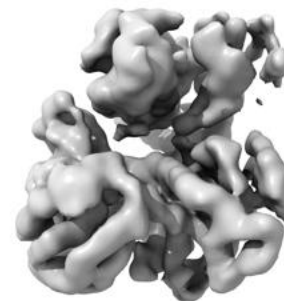
6.4.1 Primary map



X



Y



Z

The images above show the 3D surface view of the map at the recommended contour level 0.0117. These images, in conjunction with the slice images, may facilitate assessment of whether an appropriate contour level has been provided.

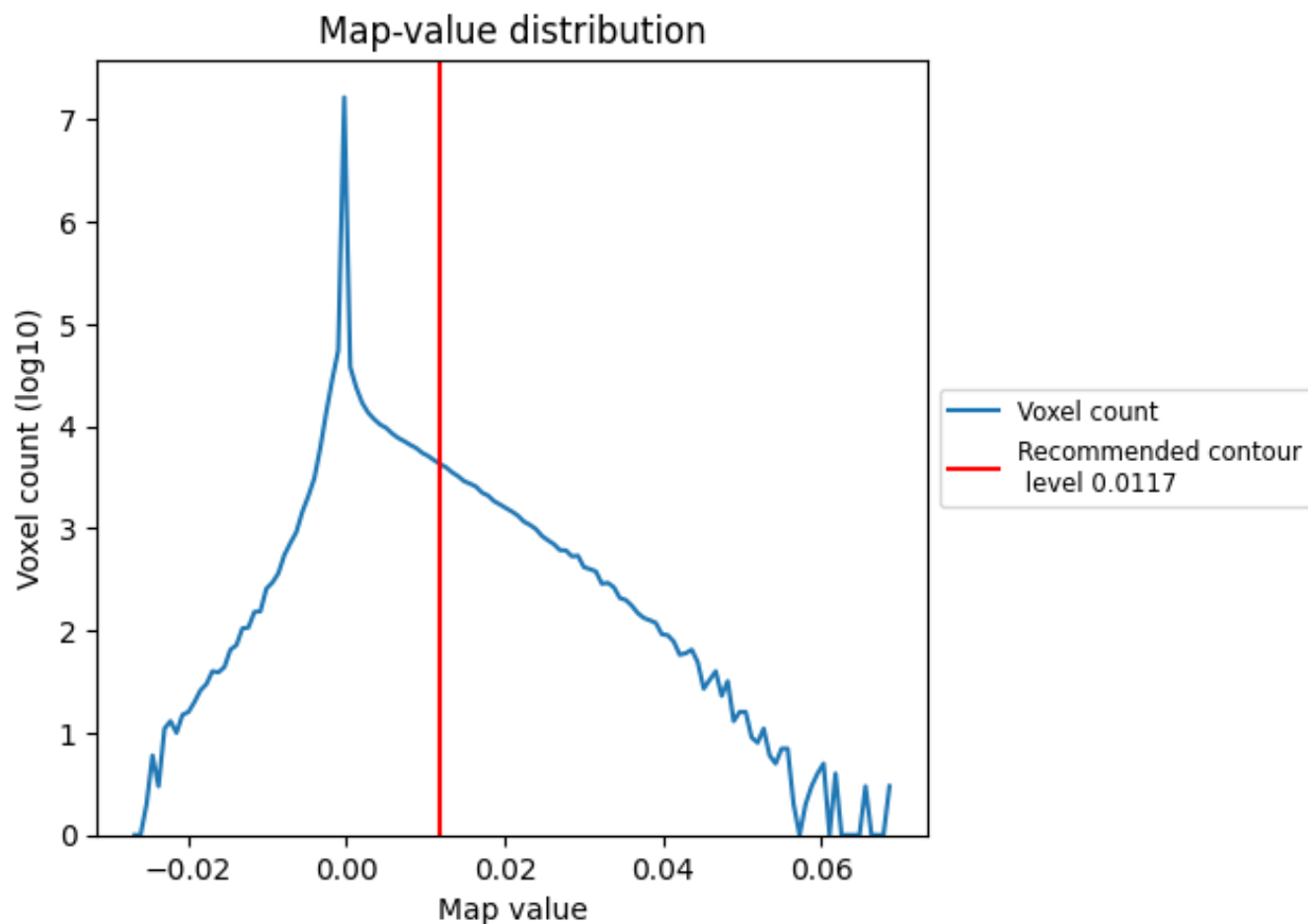
6.5 Mask visualisation

This section was not generated. No masks/segmentation were deposited.

7 Map analysis [i](#)

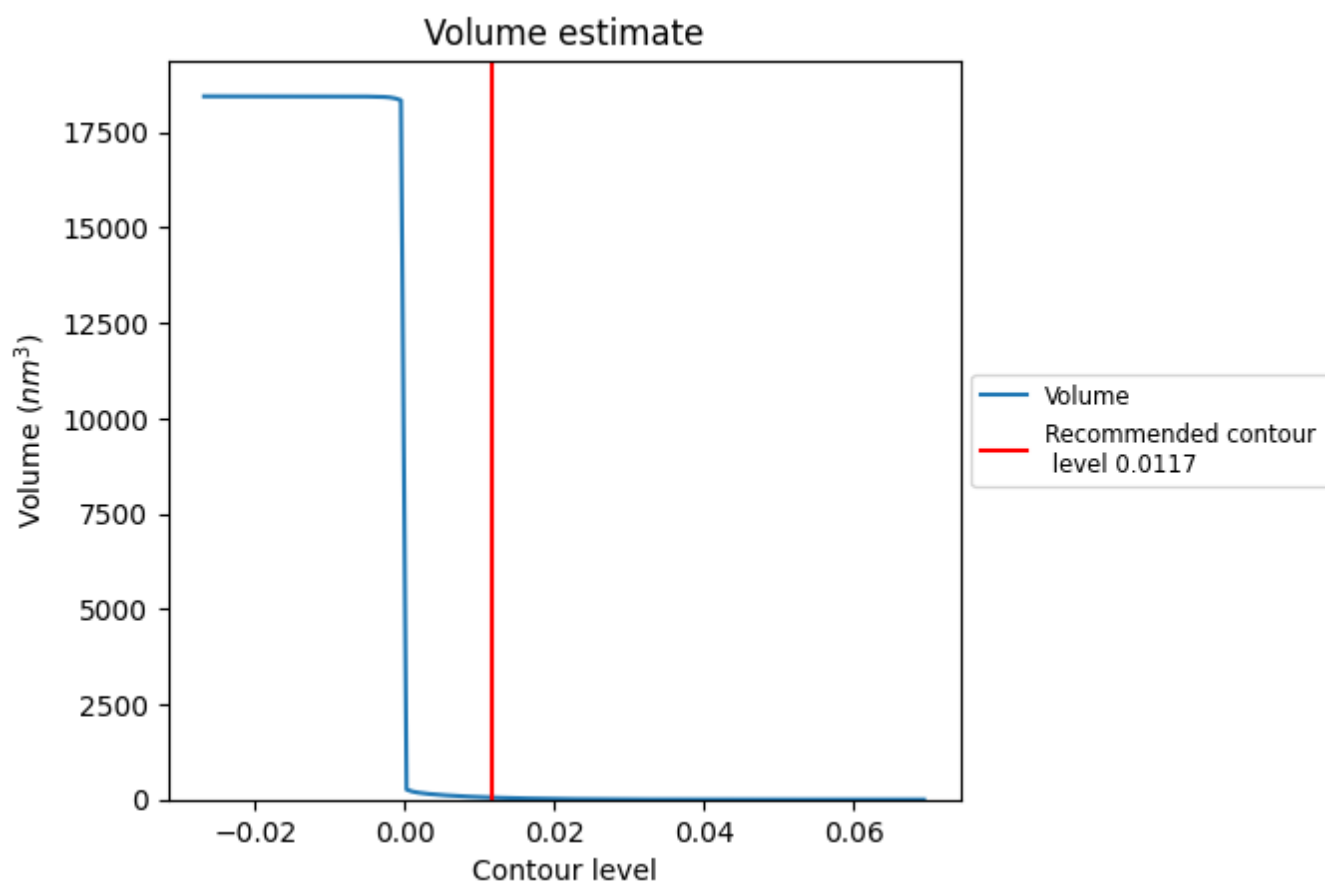
This section contains the results of statistical analysis of the map.

7.1 Map-value distribution [i](#)



The map-value distribution is plotted in 128 intervals along the x-axis. The y-axis is logarithmic. A spike in this graph at zero usually indicates that the volume has been masked.

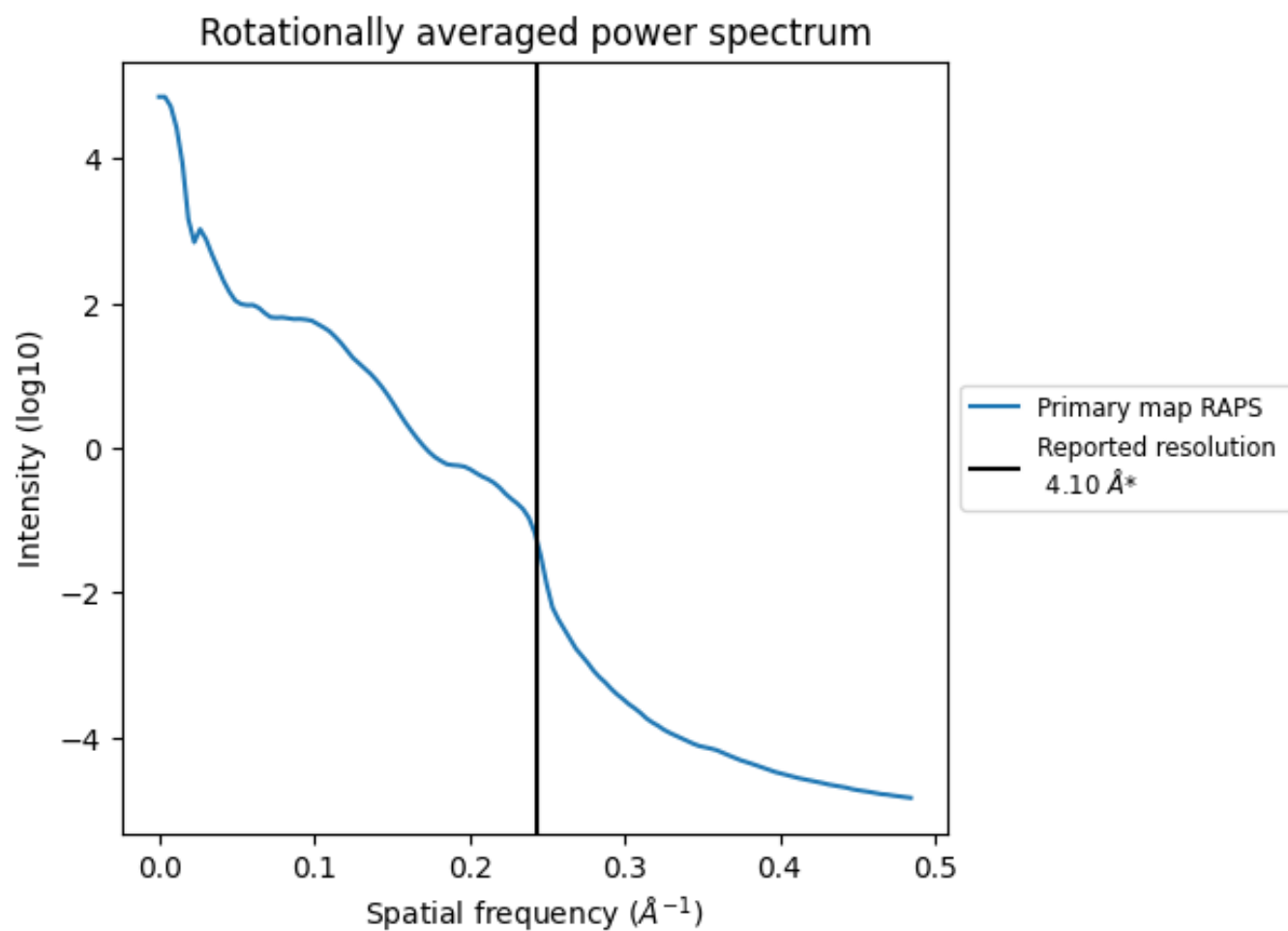
7.2 Volume estimate [i](#)



The volume at the recommended contour level is 53 nm^3 ; this corresponds to an approximate mass of 48 kDa.

The volume estimate graph shows how the enclosed volume varies with the contour level. The recommended contour level is shown as a vertical line and the intersection between the line and the curve gives the volume of the enclosed surface at the given level.

7.3 Rotationally averaged power spectrum ⓘ



*Reported resolution corresponds to spatial frequency of 0.244 Å⁻¹

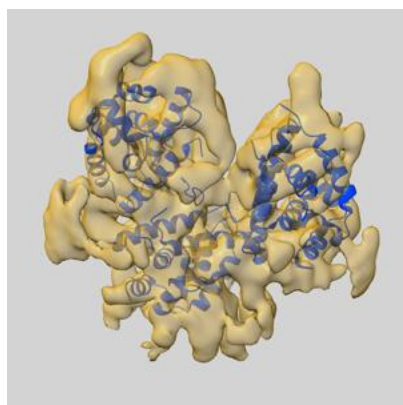
8 Fourier-Shell correlation

This section was not generated. No FSC curve or half-maps provided.

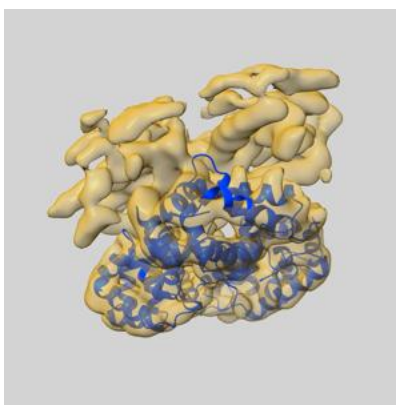
9 Map-model fit [i](#)

This section contains information regarding the fit between EMDB map EMD-20051 and PDB model 6OG3. Per-residue inclusion information can be found in section 3 on page 5.

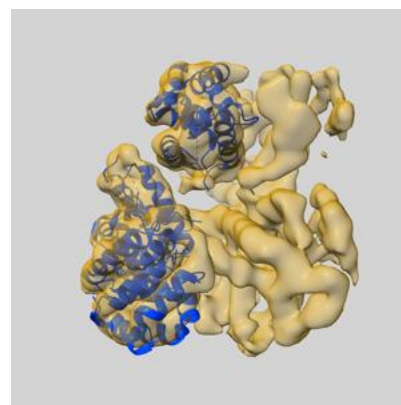
9.1 Map-model overlay [i](#)



X



Y



Z

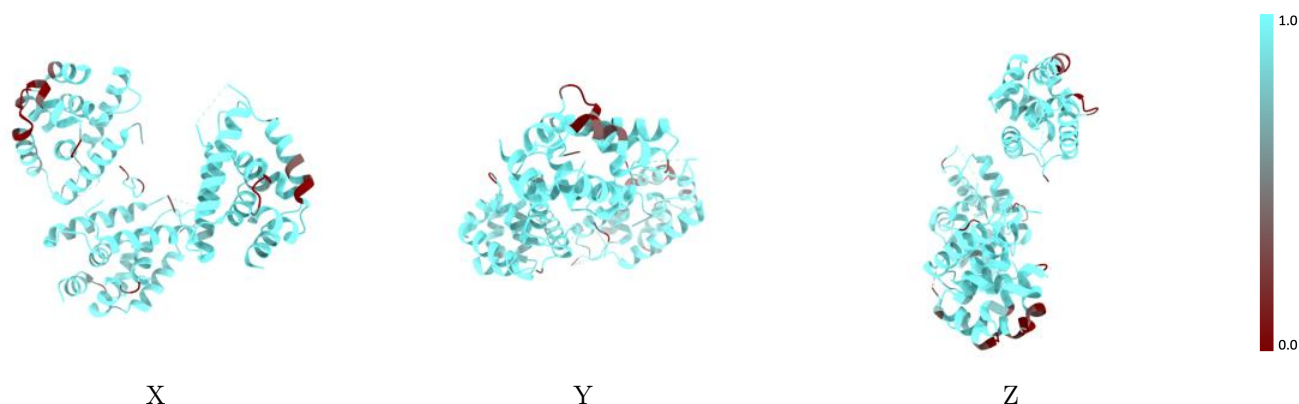
The images above show the 3D surface view of the map at the recommended contour level 0.0117 at 50% transparency in yellow overlaid with a ribbon representation of the model coloured in blue. These images allow for the visual assessment of the quality of fit between the atomic model and the map.

9.2 Q-score mapped to coordinate model [i](#)



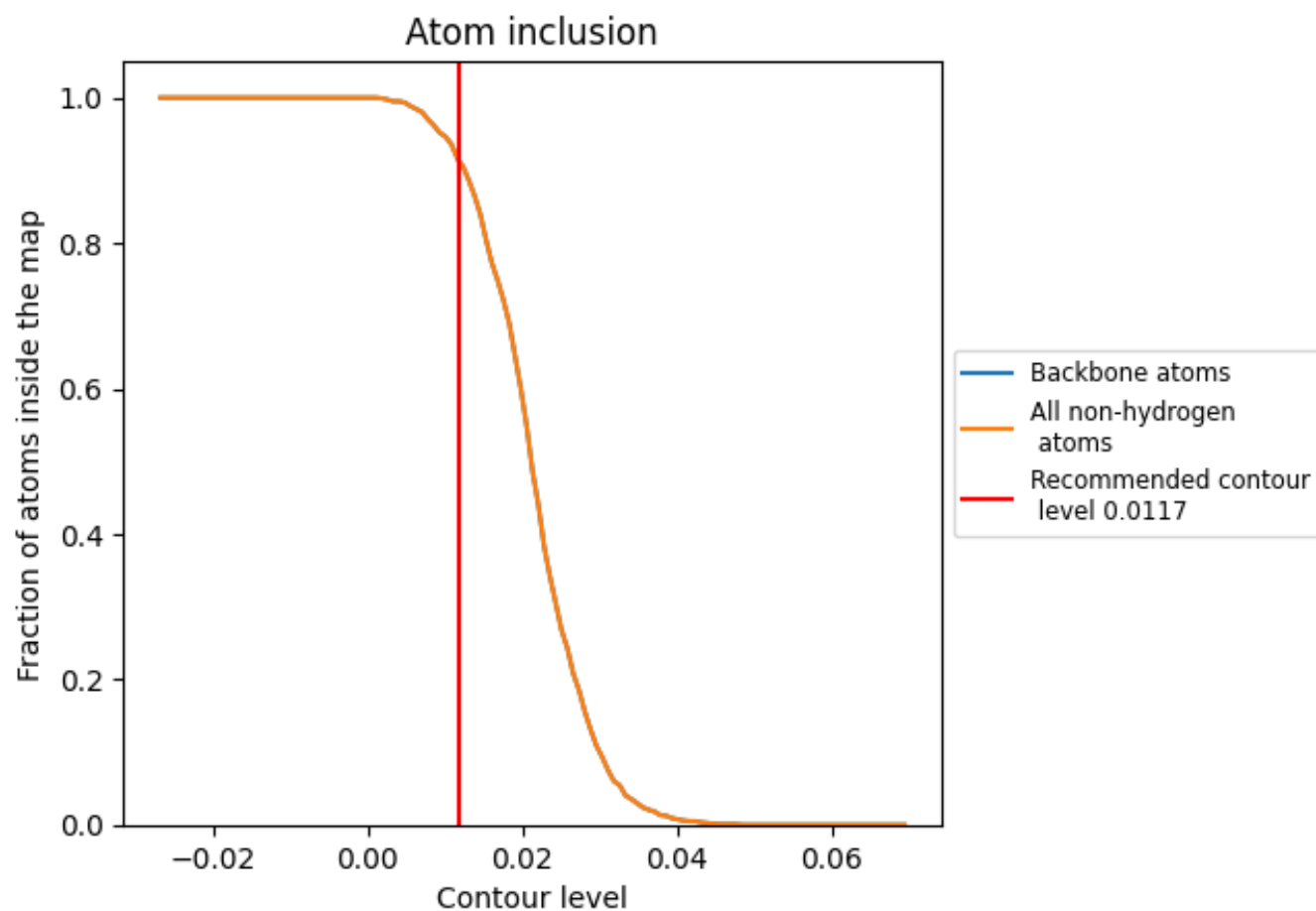
The images above show the model with each residue coloured according to its Q-score. This shows their resolvability in the map with higher Q-score values reflecting better resolvability. Please note: Q-score is calculating the resolvability of atoms, and thus high values are only expected at resolutions at which atoms can be resolved. Low Q-score values may therefore be expected for many entries.

9.3 Atom inclusion mapped to coordinate model [i](#)



The images above show the model with each residue coloured according to its atom inclusion. This shows to what extent they are inside the map at the recommended contour level (0.0117).

9.4 Atom inclusion [i](#)



At the recommended contour level, 91% of all backbone atoms, 91% of all non-hydrogen atoms, are inside the map.

9.5 Map-model fit summary ⓘ

The table lists the average atom inclusion at the recommended contour level (0.0117) and Q-score for the entire model and for each chain.

Chain	Atom inclusion	Q-score
All	<div></div> 0.9136	<div></div> 0.3060
A	<div></div> 0.9217	<div></div> 0.2940
C	<div></div> 0.9646	<div></div> 0.3210
E	<div></div> 0.8662	<div></div> 0.3020
P	<div></div> 0.7407	<div></div> 0.3220

